

List of pages in this Trip Kit

Trip Kit Index

Airport Information For VQPR

Terminal Charts For VQPR

Revision Letter For Cycle 16-2023

Change Notices

Notebook

General Information

Location: PARO BTN
ICAO/IATA: VQPR / PBH
Lat/Long: N27° 24.19', E089° 25.49'
Elevation: 7364 ft

Airport Use: Public
Daylight Savings: Not Observed
UTC Conversion: -6:00 = UTC
Magnetic Variation: 0.0° E

Fuel Types: Jet A-1
Repair Types: Minor Airframe, Minor Engine
Customs: Yes
Airport Type: IFR
Landing Fee: Yes
Control Tower: Yes
Jet Start Unit: No
LLWS Alert: No
Beacon: No

Sunrise: 2356 Z
Sunset: 1148 Z

Runway Information

Runway: 15
Length x Width: 7431 ft x 98 ft
Surface Type: asphalt
TDZ-Elev: 7361 ft
Displaced Threshold: 525 ft

Runway: 33
Length x Width: 7431 ft x 98 ft
Surface Type: asphalt
TDZ-Elev: 7310 ft
Displaced Threshold: 394 ft

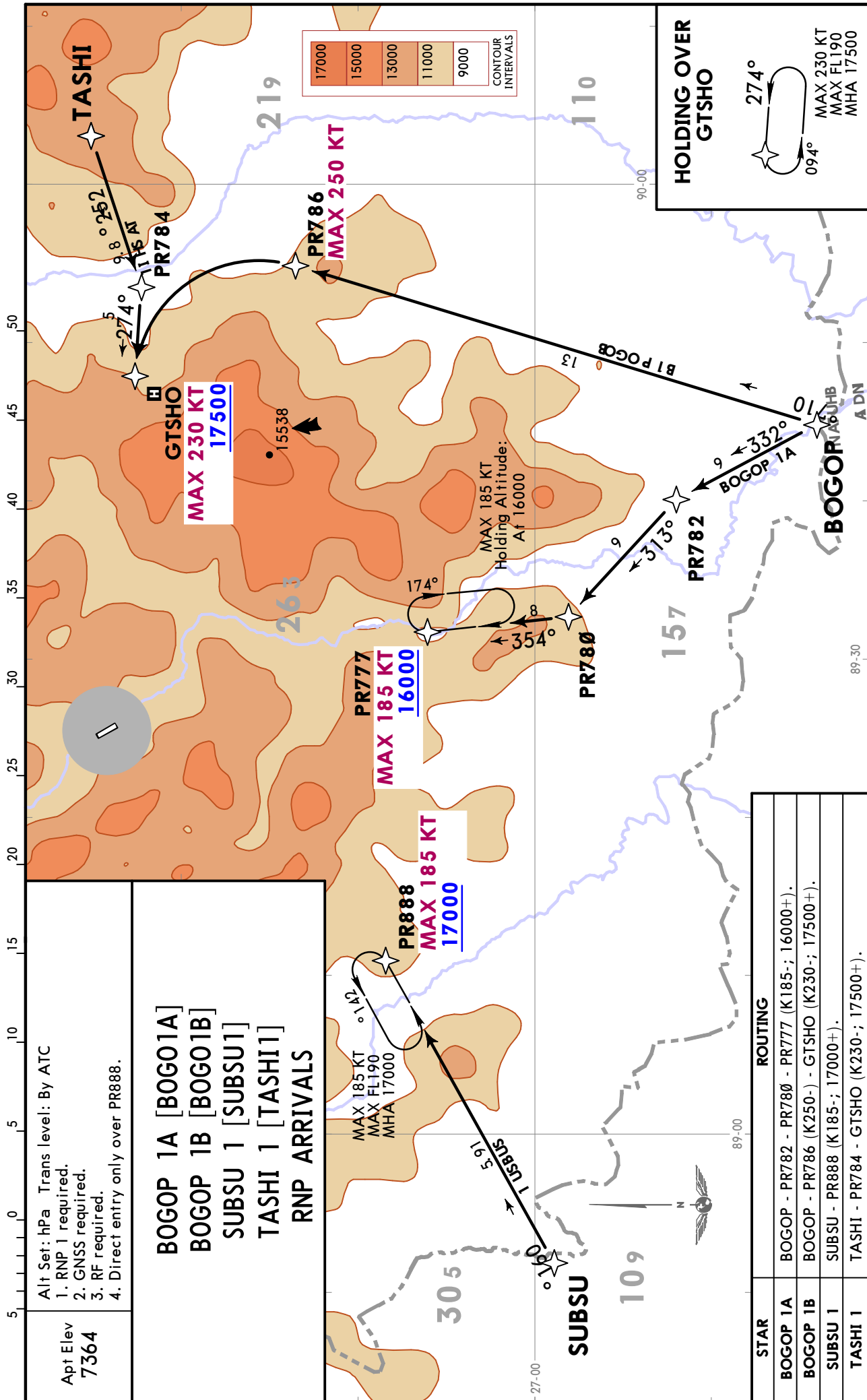
Communication Information

Paro Tower: 120.300
Paro Radio: 1334.200
Paro Radio: 892.100

VQPR/PBH
PARO INTL

JEPPESSEN
10 APR 20 10-2 Eff 23 Apr

PARO, BHUTAN
RNAV STAR



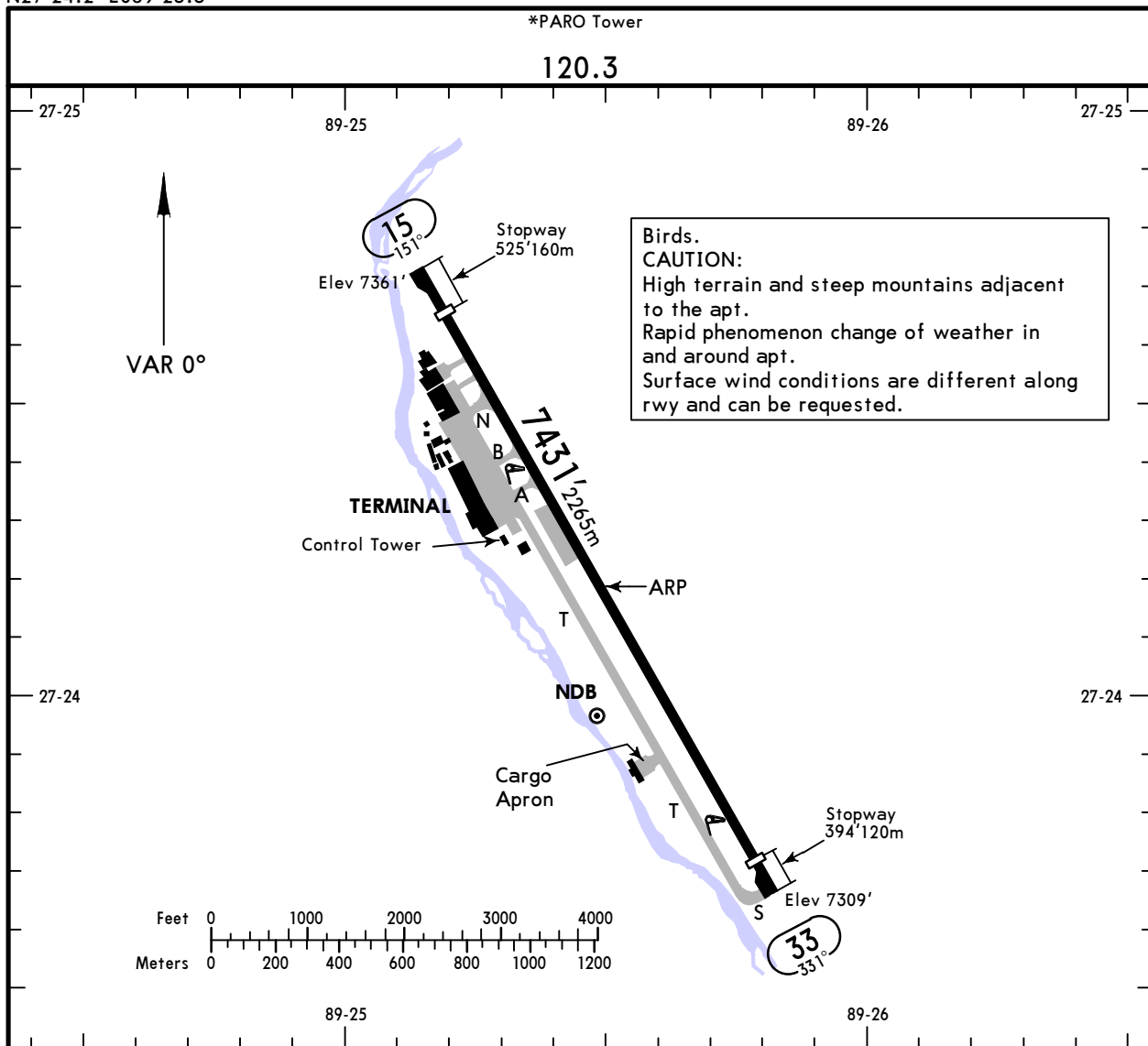
CHANGES: BJENA replaced by TASHI.

© JEPPESEN, 2018, 2020. ALL RIGHTS RESERVED.

VQPR/PBH
 Apt Elev **7364'**
 N27 24.2 E089 25.5

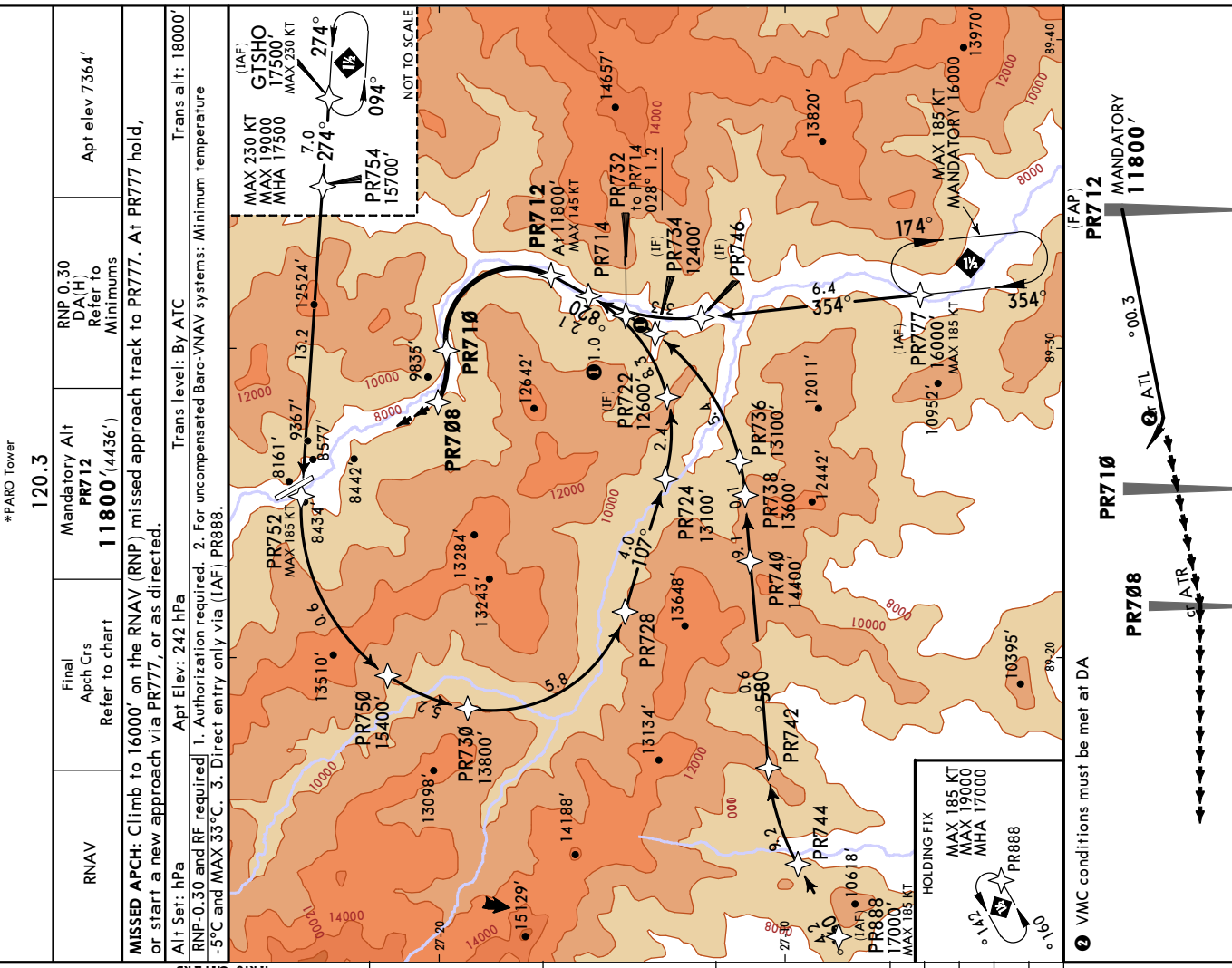
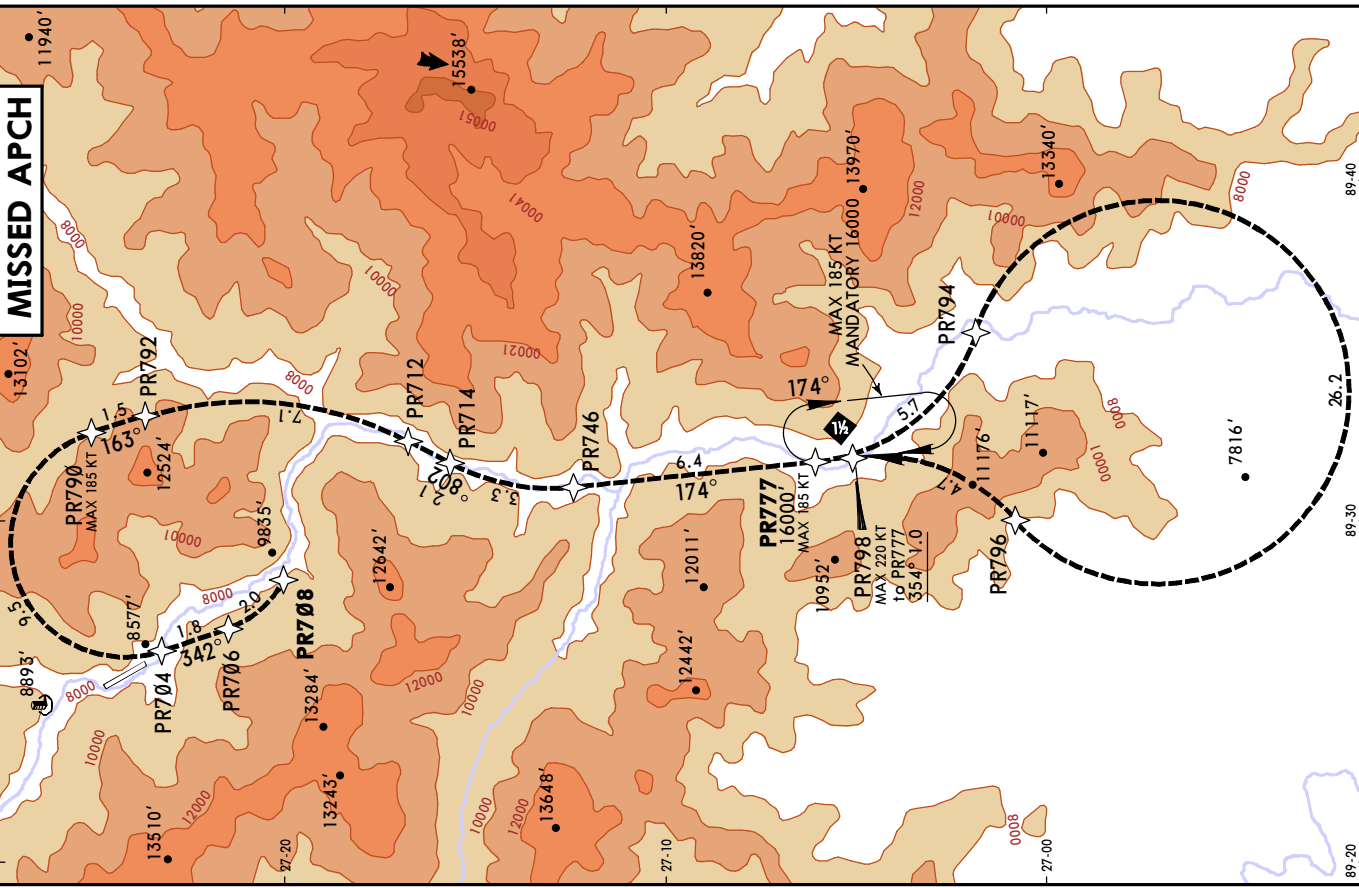
JEPPESEN
 30 NOV 18 **(10-9)** Eff 6 Dec

PARO, BHUTAN
PARO INTL



ADDITIONAL RUNWAY INFORMATION

RWY	USABLE LENGTHS			
	LANDING BEYOND		TAKE-OFF	WIDTH
	Threshold	Glide Slope		
15	6906' 2105m		7431' 2265m	98' 30m
33	7037' 2145m			



CAT A, B & C

LANDING RWY 15/33
RNP 0.30

DA(H): **10690** (3326') B: **10720** (3356') C: **10740** (3376')

A	5000m	NOT AUTHORIZED
B		
C		

CIRCLE-TO-LAND

*PARO Tower
120.3

RNAV	Final Apch Crs Refer to chart	Mandatory Alt	RNP 0.30 DA(H) Refer to Minimums	Apt elev 7364'
PR712	11800 (4436')			

MISSED APCH: Climb to 16000' on the RNAV (RNP) missed approach track to PR777. At PR777 hold, or start a new approach via PR777, or as directed.

Alt Set: hPa Apt Elev: 242 hPa Trans level: By ATC Trans alt: 18000'

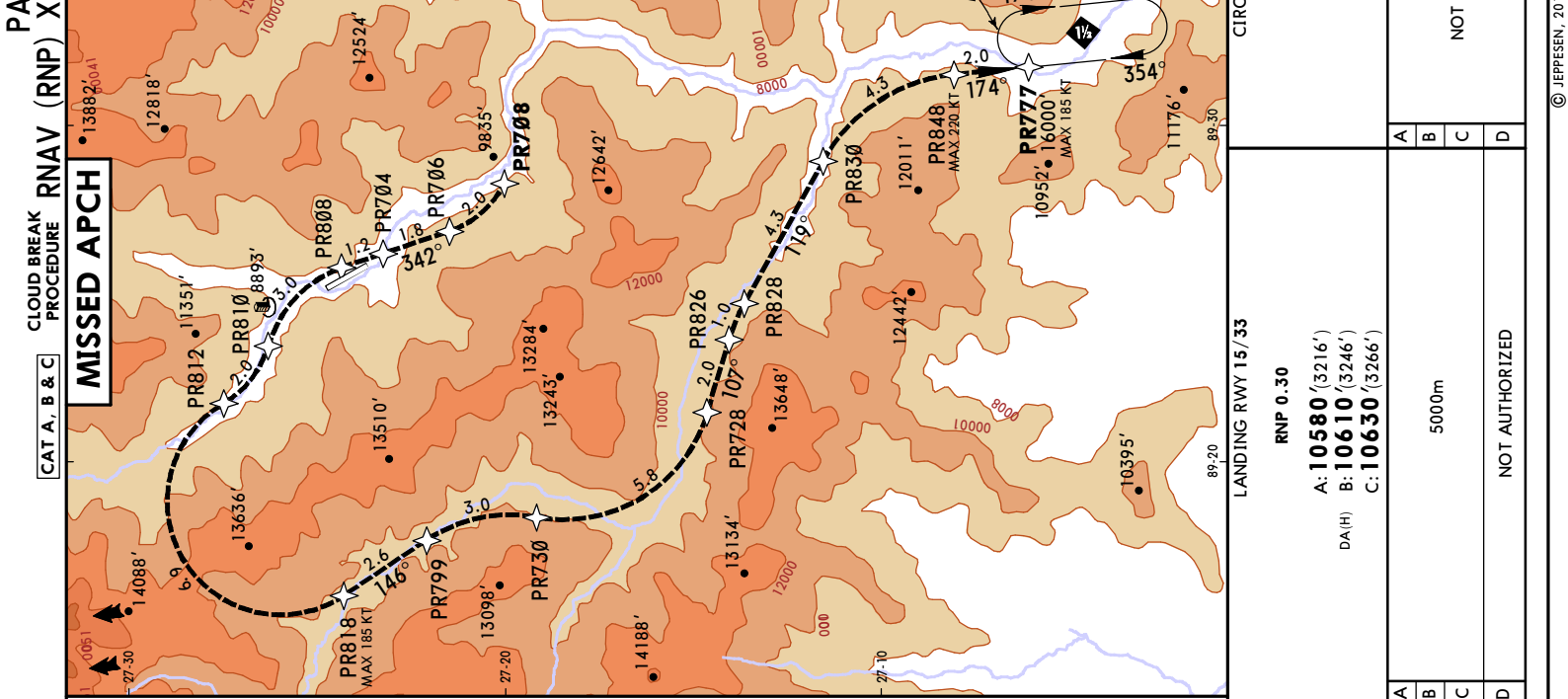
RNP 0.30 and RF required 1. Authorization required. 2. For uncompensated Baro-VNAV systems: Minimum temperature -5°C and MAX 33°C. 3. Direct entry only via (IAF) PR888.

VMC conditions must be met at DA	4.3	1.5	5.8	10.4
Apt 7364'				

Gnd speed-Kts	70	90	100	120	140	160
Glide Path Angle	3.00°	372	478	531	637	743
						849

MAP at DA
CHANGES: Reissue.

MISSED APCH



LANDING RWY 15/33
 RNP 0.30
 A: 10580 (3216')
 DA(H) B: 10610 (3246')
 C: 10630 (3266')

A	NOT AUTHORIZED
B	NOT AUTHORIZED
C	NOT AUTHORIZED
D	NOT AUTHORIZED

5000m

CIRCLE-TO-LAND

APR 7364'

VMC conditions must be met at DA

PR710 MANDATORY 11800'

PR712 MANDATORY 11800'

PR708

PR708

PR710

PR712

PR708

PR710

PR712

PR708

PR710

PR712

PR708

PR710

PR712

PR708

PR710

PR712

PR708

PR710

PR712

PR708

PR710

0	4.3	1.5	5.8	4.6	10.4
---	-----	-----	-----	-----	------

70	90	100	120	140	160
----	----	-----	-----	-----	-----

3.00°	372	478	531	637	743	849
-------	-----	-----	-----	-----	-----	-----

MAP at DA

CHANGES: Reissue.

© JEPPESEN, 2018. ALL RIGHTS RESERVED.

Chart changes since cycle 15-2023

ADD = added chart, REV = revised chart, DEL = deleted chart.

ACT	PROCEDURE IDENT	INDEX	REV DATE	EFF DATE
PARO, (PARO INTL - VQPR)				

TERMINAL CHART CHANGE NOTICES

Chart Change Notices for Airport VQPR

Type: Terminal

Effectivity: Temporary

Begin Date: Immediately

End Date: 20221231

(10-9) Per AIP SUP 001 thru 003/20, RWY, RESA and TWY A reconstruction in progress during non-operational hours, exercise caution due to equipment and vehicles within obstacle limitation surface. Exercise caution during landing on wet surface due to excessive rubber deposit in both touchdown zones.