

List of pages in this Trip Kit

Trip Kit Index

Airport Information For LBPD

Terminal Charts For LBPD

Revision Letter For Cycle 16-2023

Change Notices

Notebook

General Information

Location: PLOVDIV BGR
ICAO/IATA: LBPD / PDV
Lat/Long: N42° 04.07', E024° 51.05'
Elevation: 603 ft

Airport Use: Joint-Use
Daylight Savings: Observed
UTC Conversion: -2:00 = UTC
Magnetic Variation: 5.0° E

Fuel Types: Jet, Jet A-1
Repair Types: Minor Airframe, Minor Engine
Customs: Yes
Airport Type: IFR
Landing Fee: Yes
Control Tower: Yes
Jet Start Unit: No
LLWS Alert: No
Beacon: No

Sunrise: 0341 Z
Sunset: 1703 Z

Runway Information

Runway: 12
Length x Width: 8202 ft x 148 ft
Surface Type: concrete
TDZ-Elev: 563 ft
Lighting: Edge, ALS

Runway: 30
Length x Width: 8202 ft x 148 ft
Surface Type: concrete
TDZ-Elev: 603 ft
Lighting: Edge, ALS

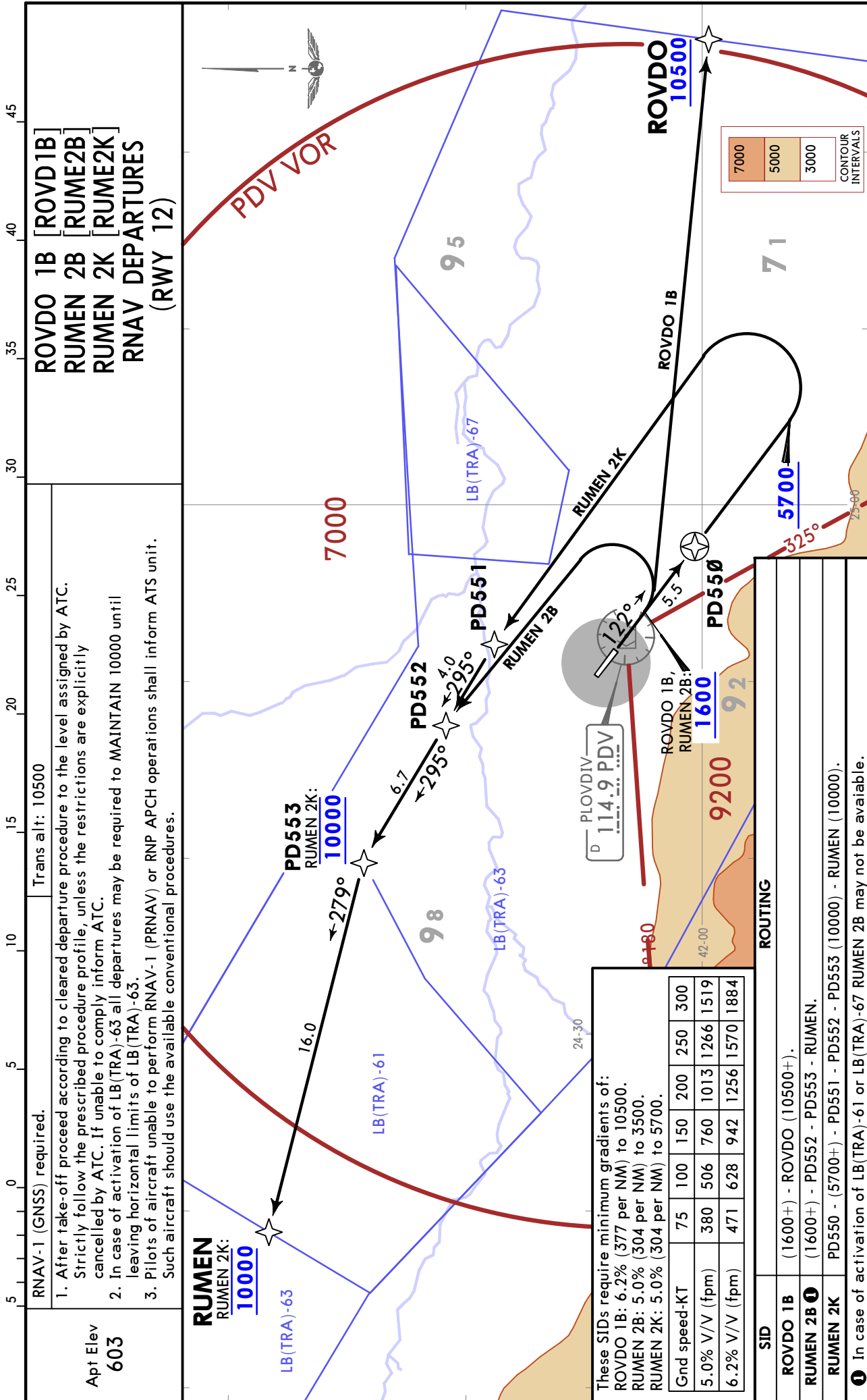
Communication Information

ATIS: 127.205
Plovdiv Tower: 36.255
Plovdiv Tower: 125.500 Secondary
Plovdiv Tower: 133.600

LBDP/PDV PLOVDIV

JEPPESSEN
5 MAY 23 10-3 Eff 18 May

PLOVDIV, BULGARIA
RNAV SID

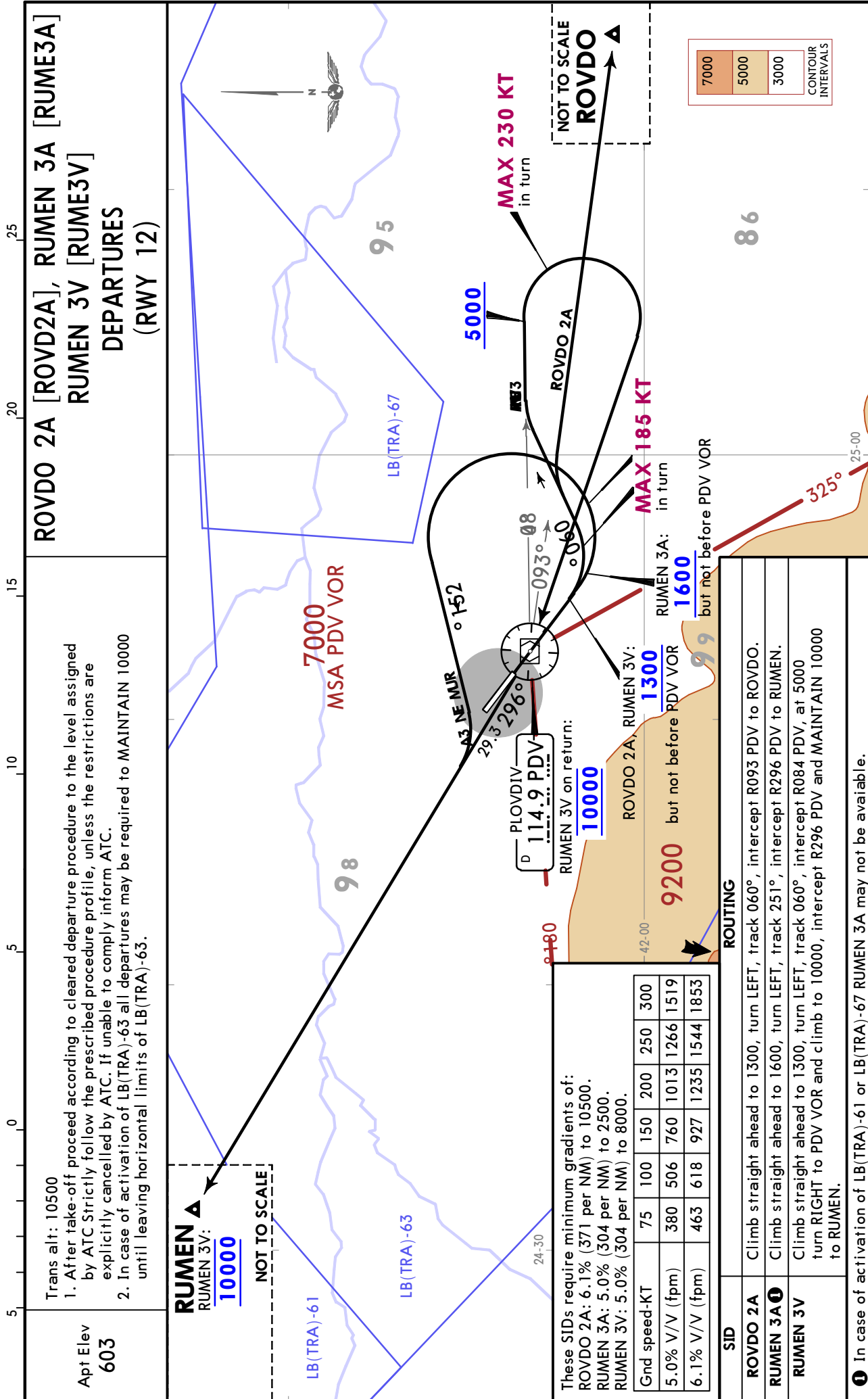


LBDP/PDV
PLOVDIV

JEPPesen
5 MAY 23 10-3B Eff 18 May

PLOVDIV, BULGARIA

SID



LBDP/PDV
PLOVDIV

JEPPesen
5 MAY 23 **10-3C** Eff 18 May

PLOVDIV, BULGARIA

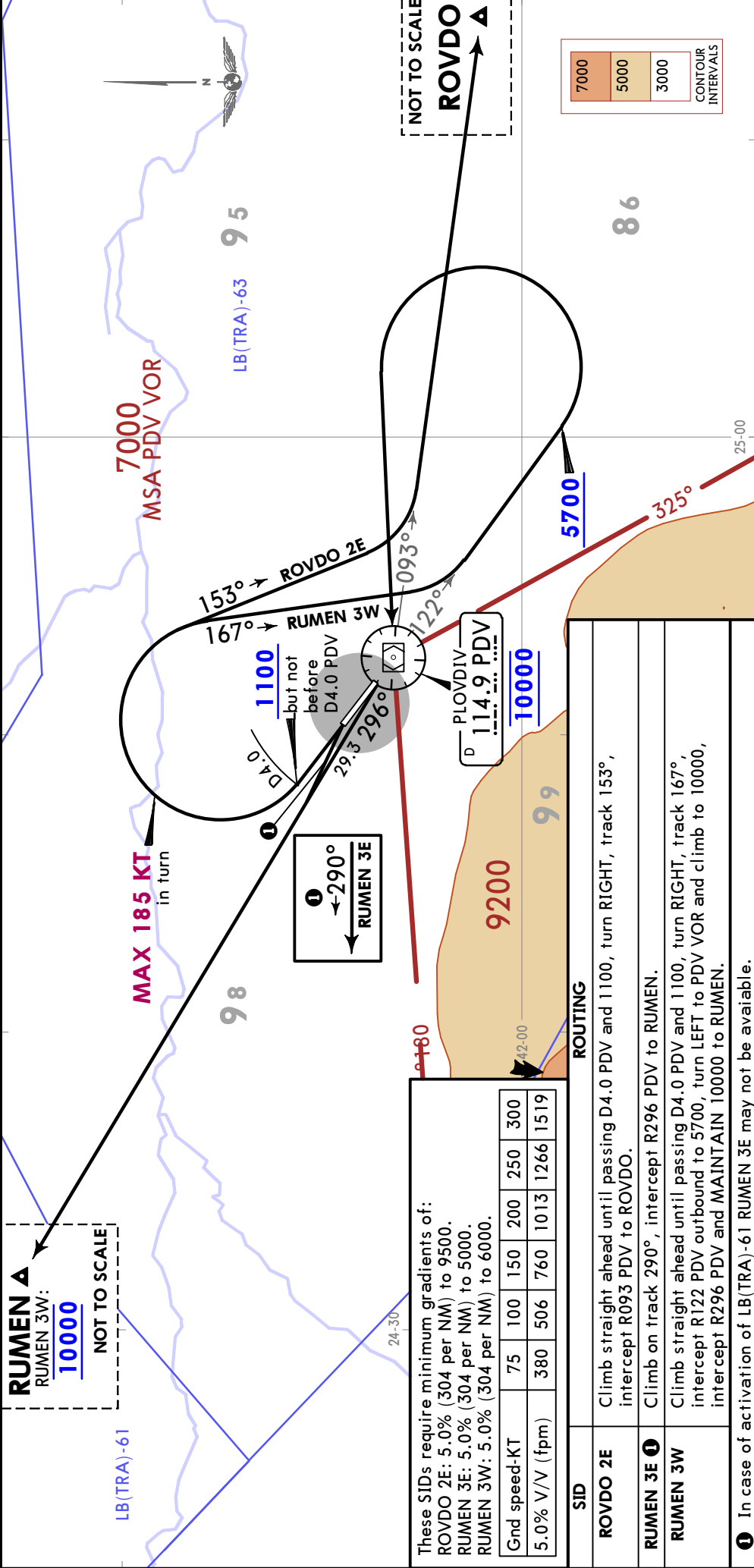
SID

ROVDO 2E [ROVD2E], RUMEN 3E [RUME3E]
RUMEN 3W [RUME3W]
DEPARTURES
(RWY 30)

SPEED: MAX 185 KT IN INITIAL TURNS

Trans alt: 10500
1. After take-off proceed according to cleared departure procedure to the level assigned by ATC. Strictly follow the prescribed procedure profile, unless the restrictions are explicitly cancelled by ATC. If unable to comply inform ATC.
2. In case of activation of LB(TRA)-63 all departures may be required to MAINTAIN 10000 until leaving LB(TRA)-63.

RUMEN ▲
RUMEN 3W:
10000
NOT TO SCALE



NOISE ABATEMENT

SUMMER: LT minus 3 HOURS = UTC (Z)
WINTER: LT minus 2 HOURS = UTC (Z)

GENERAL

All aircraft activities on ground and in the vicinity of Plovdiv airport are subject to the procedures stated below. The purpose of these procedures is to minimize excessive noise and maintain capacity and safe aircraft operation.

Operation with jet aircraft not complying with ICAO Annex 16 Chapter 3 are only allowed between 0700-2100LT.

The limitations above do not apply to delayed scheduled passenger aircraft which are permitted to land and take-off later than scheduled. Nor do the limitations apply to aircraft arriving for technical overhaul or maintenance.

Independent from the limitations above, landing is permitted at any time when, in opinion of the pilot in command, flight to another airport is inadvisable for safety reasons. The pilot in command shall report to Civil Aviation Authority the reasons for such landing.

Exceptions from the limitations above are also permitted for governmental flights and flights of state aircraft, ambulance and emergency flights and flights engaged to search and rescue.

PREFERENTIAL RUNWAY SYSTEM

Runway 30 is the preferential runway for landings. Runway 12 is the preferential runway for take-offs. This preference may, when capacity demand requires, be deviated from. As far as weather and traffic conditions permit, landings between 2200-0600LT shall be executed on runway 30 and take-offs between 2200-0600LT shall be executed on runway 12.

DEPARTURES

Aircraft departing from runway 30 with MTWA more than 5700kg shall commence take-off run as close as possible to the southeastern end of the runway.

REVERSE THRUST

Reverse thrust other than idle thrust shall not be used between 2200-0600LT except for safety reasons.

TRAINING FLIGHT PROCEDURES

Training flights of aircraft with Maximum Total Weight Authorized above 5700 kg are only accepted from MON - FRI between 0800 - 1900LT provided they comply with the provisions of ICAO Annex 16 Chapter 3.

Training flights making touch-and-go at RWY 30 are not permitted, except for test and training activities for the needs of the Air Forces based in Plovdiv. Instrument training is permitted after prior agreement with Plovdiv TWR.

Flight planning and performance of training flights within Plovdiv CTR (General Air Traffic and Operational Air Traffic), are permitted only after prior coordination with ATC.

LBDP/PDV

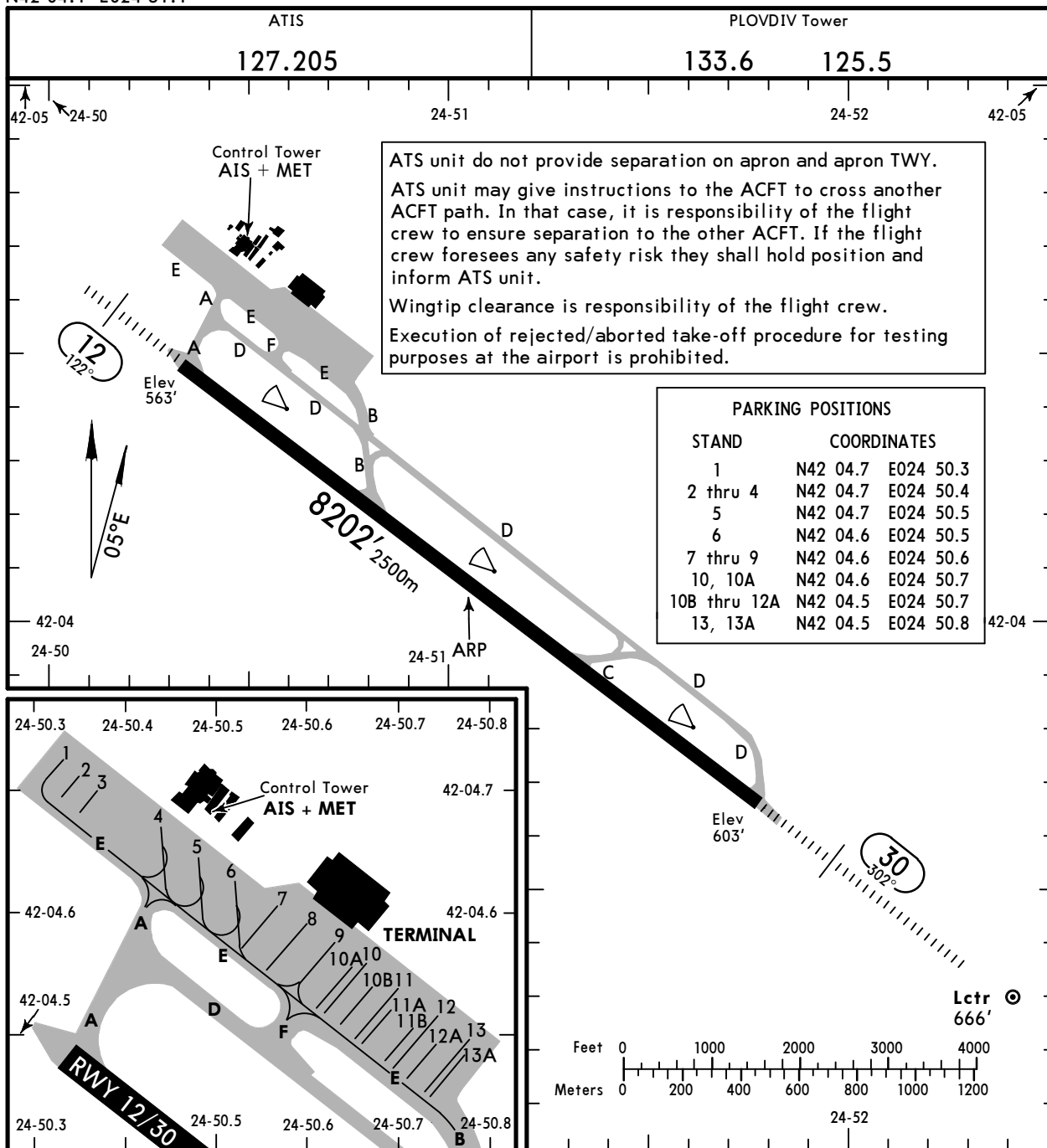
Apt Elev **603'**
N42 04.1 E024 51.1



29 OCT 21 **10-9** Eff 4 Nov

PLOVDIV, BULGARIA

PLOVDIV



ADDITIONAL RUNWAY INFORMATION				
RWY	USABLE LENGTHS			WIDTH
	Threshold	Landing Beyond	Take-off	
12 30	HIRL (60m) HIALS PAPI (angle 3.0°)	RVR	7048' 2148m	148' 45m

Communication failure procedures:

- Approach clearance has been given and acknowledged:
 - SQUAWK 7600,
 - Continue flight in accordance with the cleared procedure.
- Approach clearance has not been given:
 - SQUAWK 7600,
 - Proceed to VOR/DME PDV or PD NDB at 7000' ,
 - Hold MNM 7 MIN. Execute an approach procedure at your discretion.

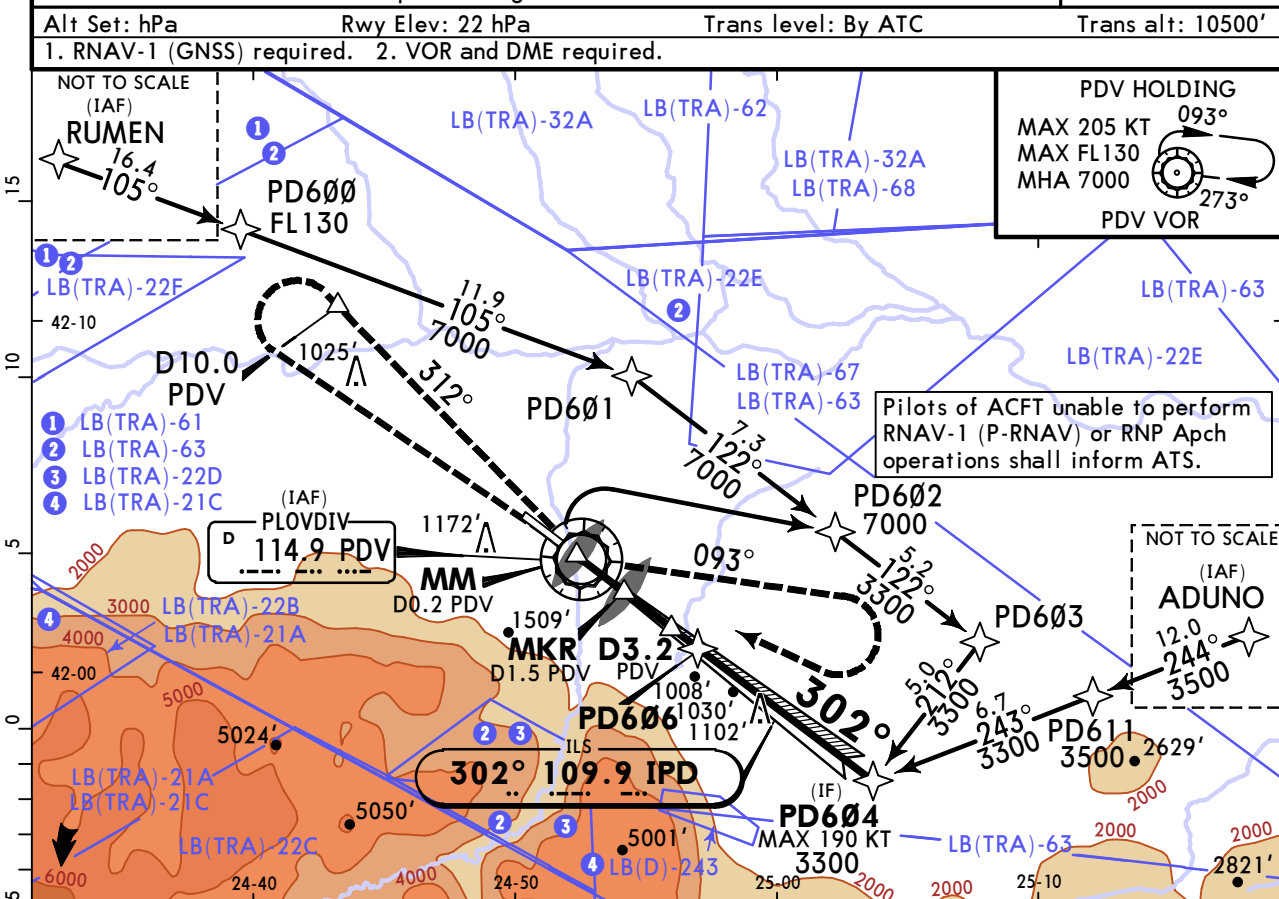
Std/State		TAKE-OFF			
Low Visibility Take-off		RL or RCLM	RL	Adequate Vis Ref	
RL & RCLM	RL			DAY	NIGHT
DAY	NIGHT	DAY	NIGHT	DAY	NIGHT
R300m		R/V400m		R/V500m	NA

LBDP/PDV PLOVDIV

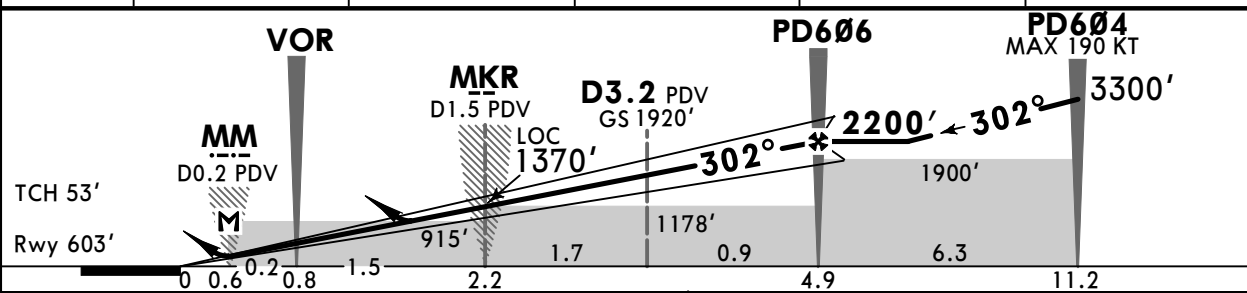
JEPPESSEN
19 MAY 23 (11-1)

PLOVDIV, BULGARIA ILS X or LOC X Rwy 30

BRIEFING STRIP™	ATIS 127.205	PLOVDIV Tower 133.6 125.5	
LOC IPD 109.9	Final Apch Crs 302°	PD606 2200' (1597')	ILS DA(H) Refer to Minimums Apt Elev 603' Rwy 603'
MISSED APCH: Climb on R-312 PDV until passing D10.0 PDV and 2700'. Turn LEFT (MAX 195 KT) to VOR. Climb to 7000' on R-093 PDV. Turn RIGHT to VOR and hold. Refer to minimums for missed apch climb gradients.			
Alt Set: hPa Rwy Elev: 22 hPa Trans level: By ATC Trans alt: 10500'			
1. RNAV-1 (GNSS) required. 2. VOR and DME required.			



LOC (GS out)	PDV DME	1.0	2.0	3.0	4.0
	ALTITUDE	1230'	1540'	1860'	2170'



Gnd speed-Kts	70	90	100	120	140	160	HIALS PAPI PAPI	PDV on 114.9 until and R-312 PDV and D10.0 2700'
GS	3.00°	372	478	531	637	849		
MAP at MM/D0.2 PDV								
PD606 to MAP	4.4	3:46	2:56	2:38	2:12	1:53		

Timing not authorized for defining the MAP.

Std/State	STRAIGHT-IN LANDING				LOC (GS out)		CIRCLE-TO-LAND	
	MACG MIN 3.5% (213'/NM)	MACG MIN 2.5% (152'/NM)	LOC (GS out) w/o MKR/D1.5 PDV	LOC (GS out) w/o MKR/D1.5 PDV	Not authorized Southwest of airport			
DA(H) 803' (200')	A:1029' (426') C:1049' (446') B:1039' (436') D:1059' (456')	CDFA 970' (367')	CDFA 1370' (767')					
ALS out	ALS out	ALS out	ALS out	Max Kts	MDA(H)			
A R550m R1200m	R1300m R1500m	R1000m	R1500m R1500m	100	1010' (407') V1500m			
B				135	1110' (507') V1600m			
C	R1400m R2100m		R1700m R2400m	180	1410' (807') V2400m			
D				205	1410' (807') V3600m			

1 R750m when a Flight Director or Autopilot or HUDLS to DA is not used.
 2 VNAV DA(H) in lieu of MDA(H) depends on operator policy. 3 or higher straight-in minimums

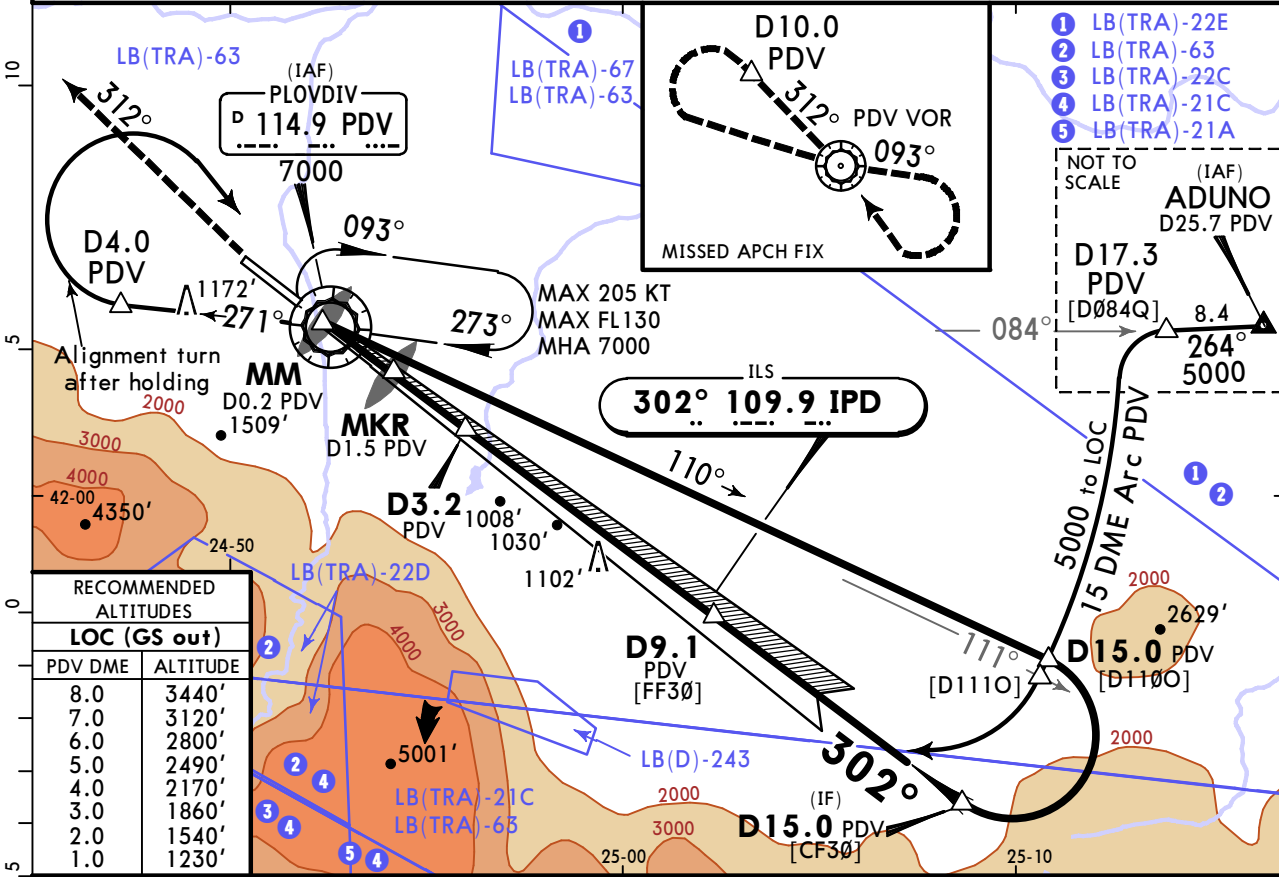
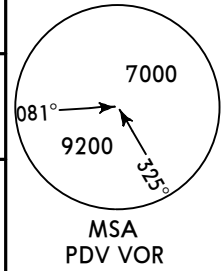
CHANGES: Chart reissue. © JEPPESSEN, 2001, 2023. ALL RIGHTS RESERVED.

LBDP/PDV PLOVDIV

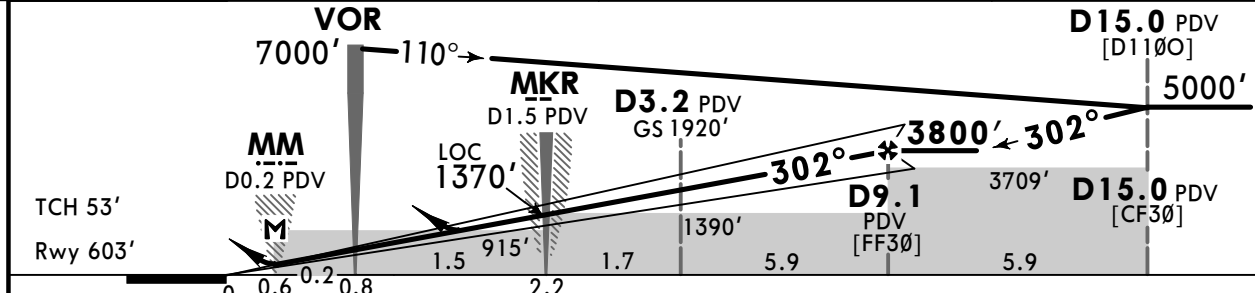
JEPPESSEN
19 MAY 23 (11-2)

PLOVDIV, BULGARIA ILS W or LOC W Rwy 30

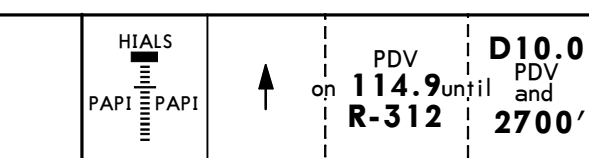
ATIS 127.205		PLOVDIV Tower 133.6 125.5		
LOC IPD 109.9	Final Apch Crs 302°	D9.1 PDV 3800' (3197')	ILS DA(H) Refer to Minimums	Apt Elev 603' Rwy 603'
MISSED APCH: Climb on R-312 PDV until passing D10.0 PDV and 2700'. Turn LEFT (MAX 195 KT) to VOR. Climb to 7000' on R-093 PDV. Turn RIGHT to VOR and hold. Refer to minimums for missed apch climb gradients.				
Alt Set: hPa		Rwy Elev: 22 hPa	Trans level: By ATC	Trans alt: 10500'
1. DME and VOR required. 2. Baseturn restricted to MAX 205 KT.				



RECOMMENDED ALTITUDES	
LOC (GS out)	
PDV DME	ALTITUDE
8.0	3440'
7.0	3120'
6.0	2800'
5.0	2490'
4.0	2170'
3.0	1860'
2.0	1540'
1.0	1230'



Gnd speed-Kts	70	90	100	120	140	160
GS	3.00°	372	478	531	637	743
MAP at MM/D0.2 PDV						
D9.1 PDV to MAP	9.3	7:58	6:12	5:35	4:39	3:59
Timing not authorized for defining the MAP.						



PANS OPS	Std/State		STRAIGHT-IN LANDING				LOC (GS out)		CIRCLE-TO-LAND	
	ALS out	ALS out	ALS out	ALS out	ALS out	ALS out	ALS out	Max Kts	MDA(H)	
A			R1300m	R1500m		R1500m	R1500m	100	1010'(407')	3 V1500m
B	1 R550m	R1200m			R1000m			135	1110'(507')	3 V1600m
C			R1400m	R2100m		R1700m	R2400m	180	1410'(807')	V2400m
D								205	1410'(807')	V3600m

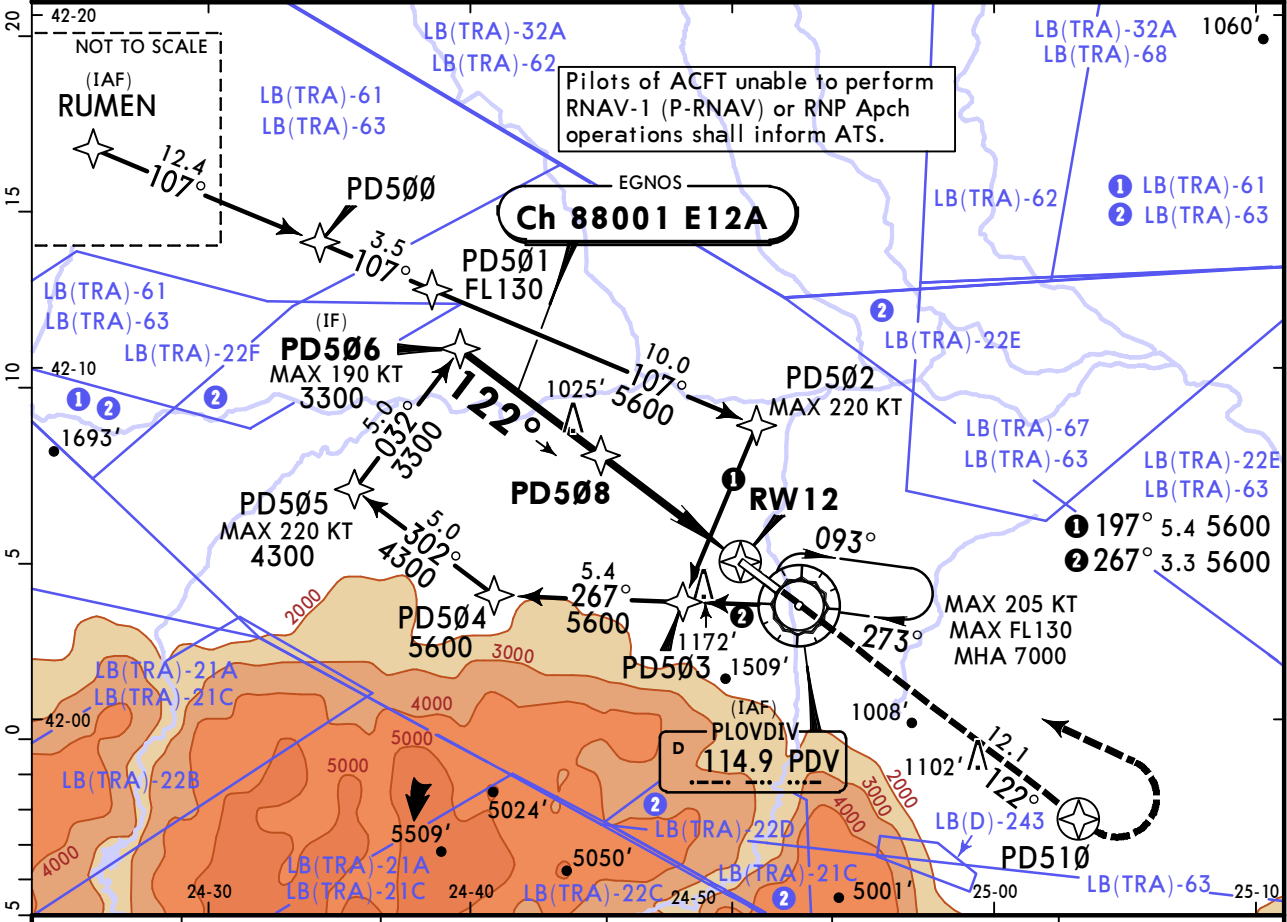
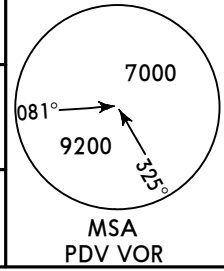
1 R750m when a Flight Director or Autopilot or HUDLS to DA is not used.
 2 VNAV DA(H) in lieu of MDA(H) depends on operator policy. 3 or higher straight-in minimums.
 CHANGES: None. © JEPPESSEN, 2012, 2023. ALL RIGHTS RESERVED.

LBDP/PDV PLOVDIV

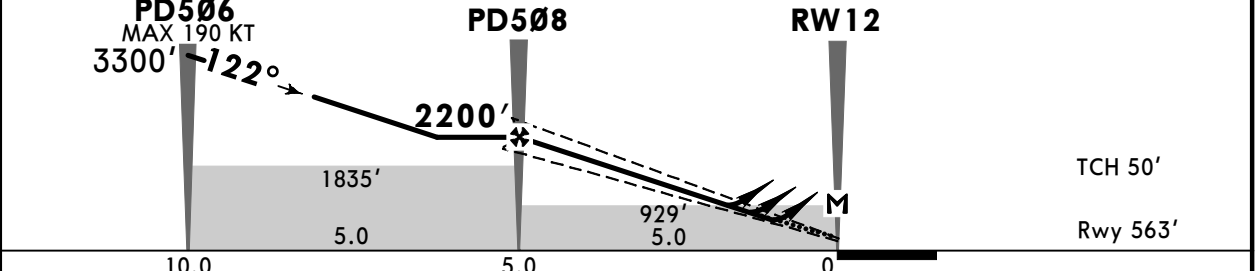
JEPPESEN
19 MAY 23 (12-1)

PLOVDIV, BULGARIA RNP Z Rwy 12

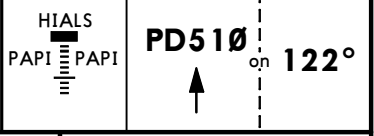
BRIEFING STRIP™	ATIS 127.205		PLOVDIV Tower 133.6 125.5		
	EGNOS Ch 88001 E12A	Final Apch Crs 122°	PD508 2200' (1637')	LPV DA(H) Refer to Minimums	Apt Elev 603' Rwy 563'
	MISSED APCH: Climb on track 122° to PD510. Climb to 4000', then turn LEFT (MAX 205 KT) to VOR climbing to 7000' and hold.				
Alt Set: hPa		Rwy Elev: 20 hPa	Trans level: By ATC		Trans alt: 10500'
RNP Apch. 1. Baro-VNAV not authorized below -30°C. 2. VPA exceeds 3.5° above 60°C.					



DIST to RW12	5.0	4.0	3.0	2.0	1.0
ALTITUDE	2200'	1880'	1570'	1250'	940'



Gnd speed-Kts	70	90	100	120	140	160	
Glide Path Angle	3.00°	372	478	531	637	743	849
MAP at RW12							
PD508 to MAP	5.0	4:17	3:20	3:00	2:30	2:09	1:53
Timing not authorized for defining the MAP.							



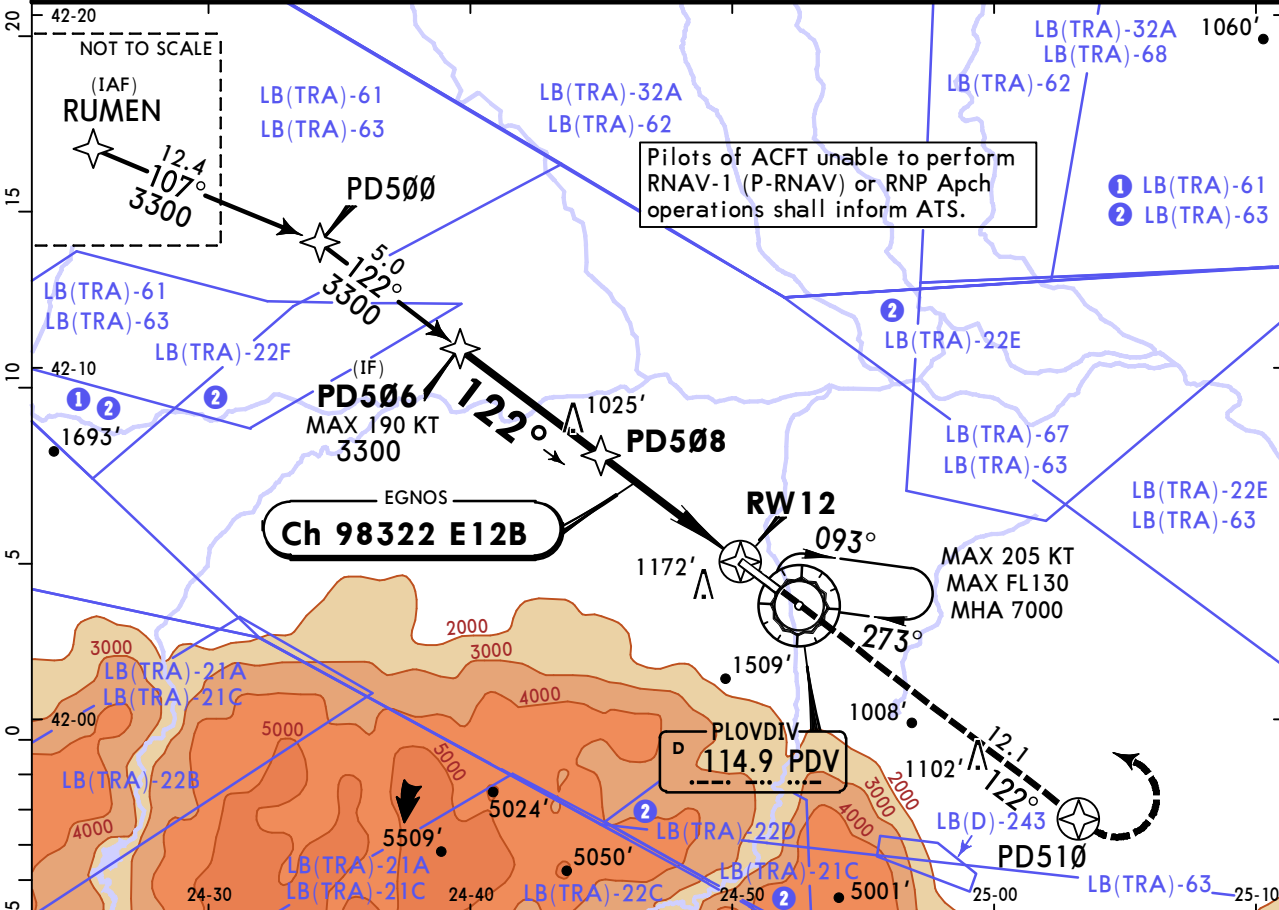
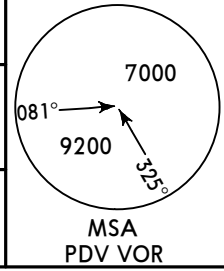
Std/State		STRAIGHT-IN LANDING			CIRCLE-TO-LAND	
LPV DA(H) C: 815' (252')		LNAV/VNAV DA(H) C: 833' (270')			Not authorized Southwest of airport	
AB: 813' (250') D: 826' (263')		AB: 823' (260') D: 843' (280')			DA/MDA(H) 930' (367')	
ALS out		ALS out			ALS out	
A					Max Kts	1010' (407') V1500m
B	R800m	R1300m	R800m	R1300m	100	1110' (507') V1600m
C			R900m	R1300m	135	1410' (807') V2400m
D	R900m			R1700m	180	1410' (807') V3600m
					205	

LBDP/PDV
PLOVDIV

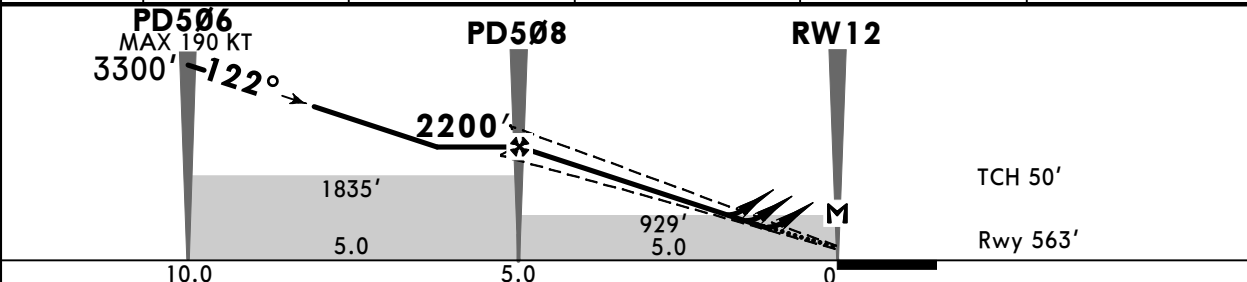
JEPPESEN
19 MAY 23 **(12-2)**

PLOVDIV, BULGARIA
RNP Y Rwy 12

ATIS 127.205			PLOVDIV Tower 133.6 125.5		
EGNOS Ch 98322 E12B	Final Apch Crs 122°	PD508 2200' (1637')	LPV DA(H) Refer to Minimums	Apt Elev 603' Rwy 563'	
MISSED APCH: Climb on track 122° to PD510. Climb to 4000', then turn LEFT (MAX 205 KT) to VOR climbing to 7000' and hold.					
Alt Set: hPa		Rwy Elev: 20 hPa		Trans level: By ATC	
RNP Apch. 1. Baro-VNAV not authorized below -30°C. 2. VPA exceeds 3.5° above 60°C.					



DIST to RW12	5.0	4.0	3.0	2.0	1.0
ALTITUDE	2200'	1880'	1570'	1250'	940'



Gnd speed-Kts	70	90	100	120	140	160
Glide Path Angle 3.00°	372	478	531	637	743	849
MAP at RW12						
PD508 to MAP	5.0	4:17	3:20	3:00	2:30	2:09
Timing not authorized for defining the MAP.						



Std/State		STRAIGHT-IN LANDING			CIRCLE-TO-LAND	
LPV		LNAV/VNAV			Not authorized Southwest of airport	
DA(H)	C: 815' (252')	DA(H)	C: 833' (270')	LNAV CDFA	Max Kts	
AB: 813' (250')	D: 826' (263')	AB: 823' (260')	D: 843' (280')	DA/MDA(H) 930' (367')	100	1010' (407') V1500m
	ALS out		ALS out	ALS out	135	1110' (507') V1600m
A					180	1410' (807') V2400m
B	R800m	R1300m	R800m	R1300m	205	1410' (807') V3600m
C			R900m			
D	R900m					

■ VNAV DA(H) in lieu of MDA(H) depends on operator policy.
 CHANGES: None. © JEPPESEN, 2018, 2023. ALL RIGHTS RESERVED.

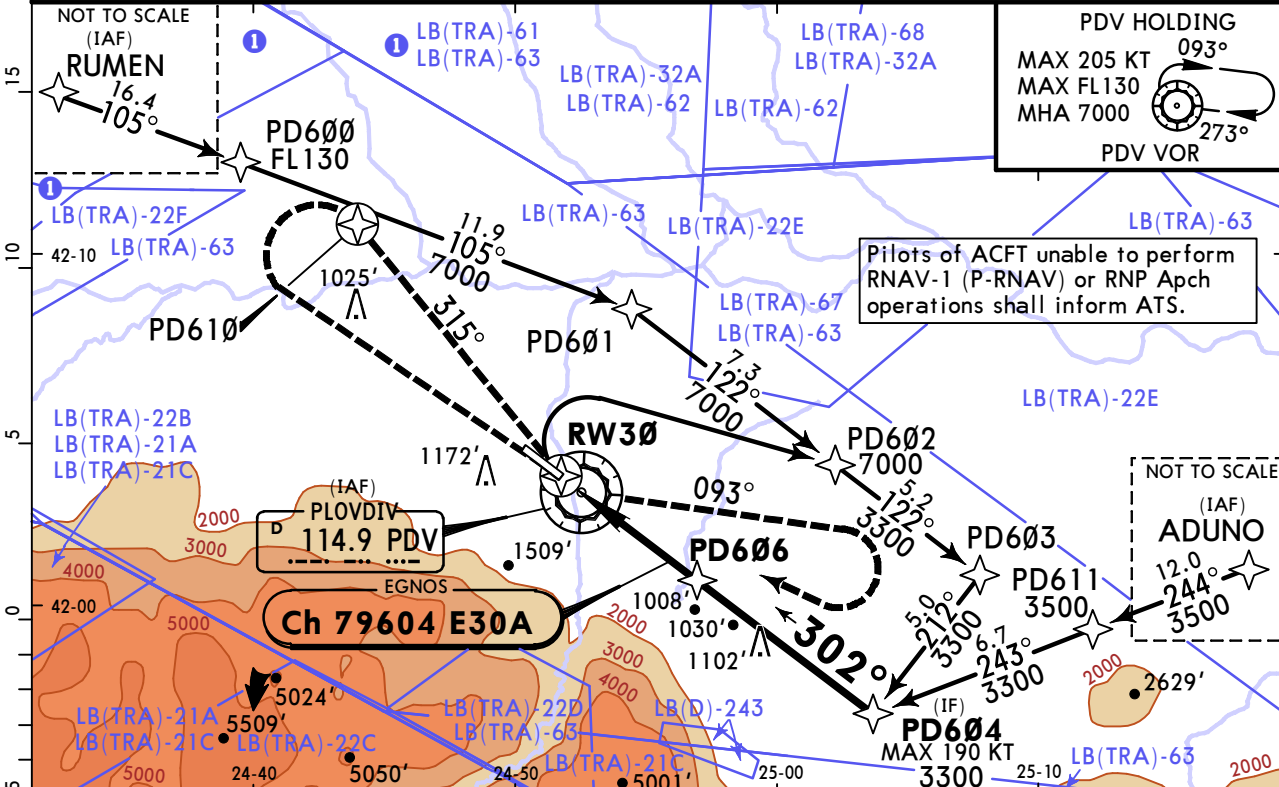
LBDP/PDV PLOVDIV

JEPPESEN
19 MAY 23 **(12-3)**

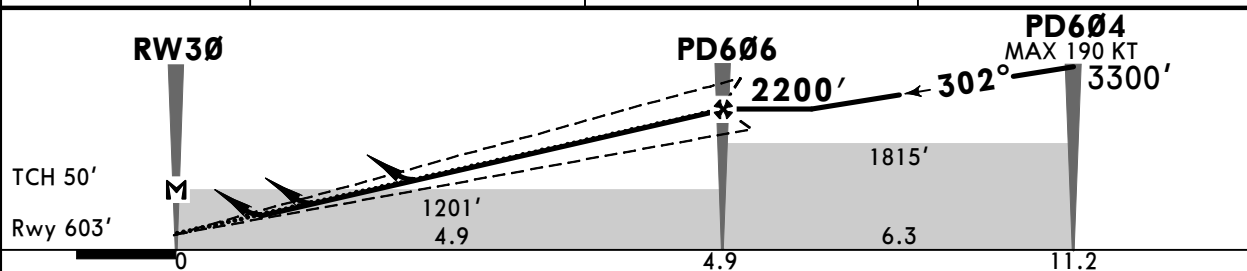
PLOVDIV, BULGARIA RNP Rwy 30

BRIEFING STRIP™	EGNOS Ch 79604 E30A		Final Apch Crs 302°	PD606 2200' (1597')	LPV DA(H) Refer to Minimums	Apt Elev 603' Rwy 603'	<p>MSA PDV VOR</p>
	MISSED APCH: Climb on track 315° to PD610. Climb to 2700' and turn LEFT (MAX 195 KT) to VOR. Climb to 7000' on course 093°. Turn RIGHT to VOR and hold. Refer to minimums for missed apch climb gradients.						

Alt Set: hPa Rwy Elev: 22 hPa Trans level: By ATC Trans alt: 10500'
 RNP Apch. 1. Baro-VNAV not authorized below -30°C. 2. VPA exceeds 3.5° above 60°C.



Dist to RW30	2.0	3.0	4.0
ALTITUDE	1280'	1600'	1920'



Gnd speed-Kts	70	90	100	120	140	160
Glide Path Angle 3.00°	372	478	531	637	743	849
MAP at RW30						
PD606 to MAP	4.9	4:12	3:16	2:56	2:27	2:06
Timing not authorized for defining the MAP.						

HIALS

PAPI PAPI

PD610

↑ on **315°**

	Std/State		STRAIGHT-IN LANDING				CIRCLE-TO-LAND	
	LPV	LNNAV/VNAV	LNNAV	LNNAV	LNNAV	LNNAV	LNNAV	
	MACG MIN 3.5% (213'/NM)	MACG MIN 2.5% (152'/NM)						
DA(H)	A: 853' (250') B: 856' (253') C: 864' (261') D: 875' (272')	A: 893' (290') B: 903' (300') C: 923' (320') D: 953' (350')	DA(H) AB: 1013' (410') C: 1023' (420') D: 1033' (430')					
	ALS out	ALS out	ALS out	ALS out	ALS out	ALS out		
A	R550m	R650m	R1400m	R1200m	R1500m	R1500m	Max Kts 100 MDA(H) 1010' (407') V1500m	
B	R600m	R700m	R1400m	R1200m	R1500m	R1500m	135 1110' (507') V1600m	
C	R600m	R700m	R1400m	R1200m	R1500m	R1500m	180 1410' (807') V2400m	
D	R600m	R900m	R1600m	R1300m	R2000m	R2200m R2400m	205 1410' (807') V3600m	

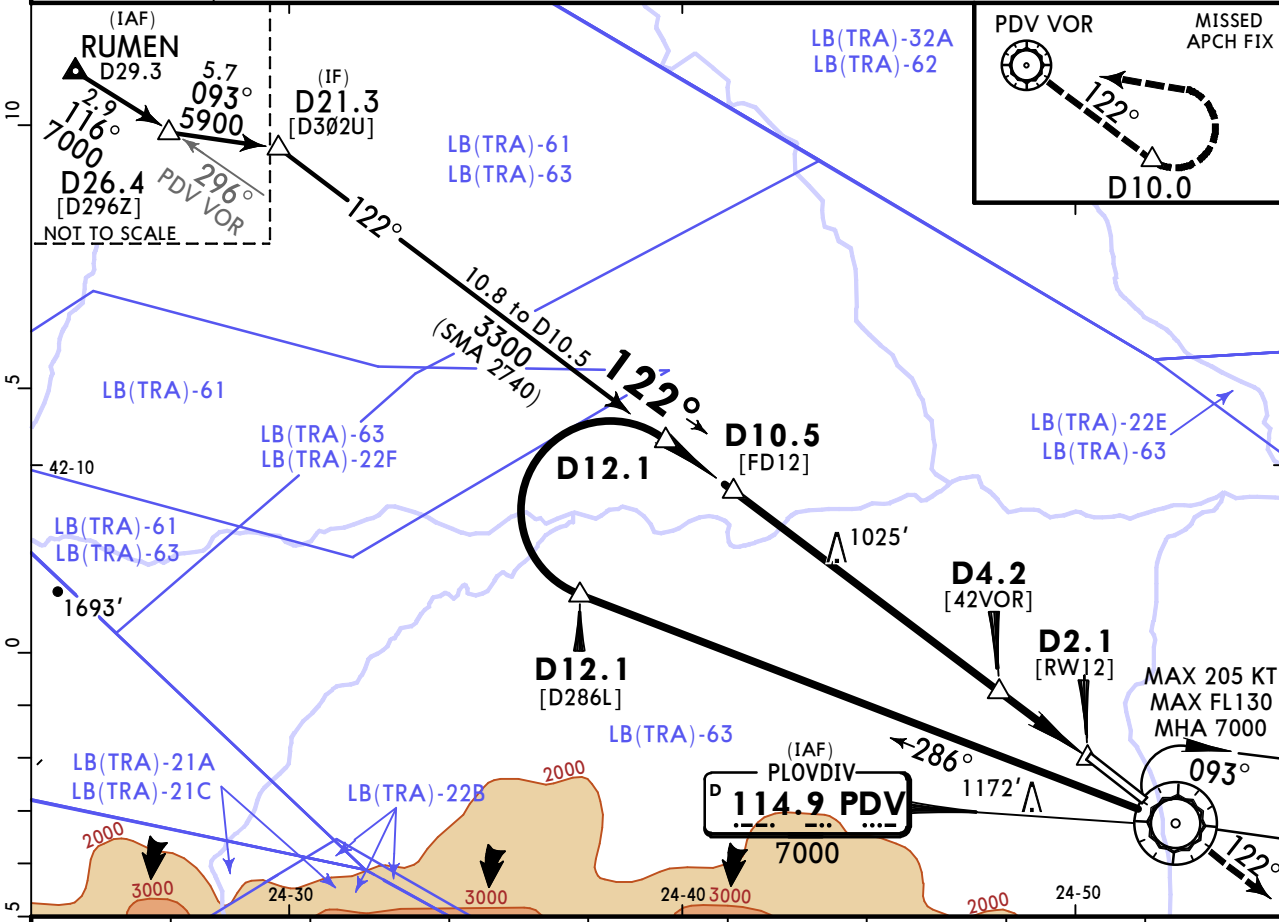
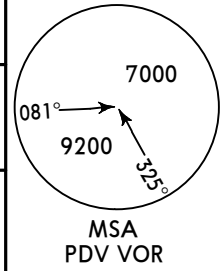
1 R750m when a Flight Director or Autopilot or HUDLS to DA is not used.
 2 VNAV DA(H) in lieu of MDA(H) depends on operator policy. 3 or higher straight-in minimums.

LBDP/PDV PLOVDIV

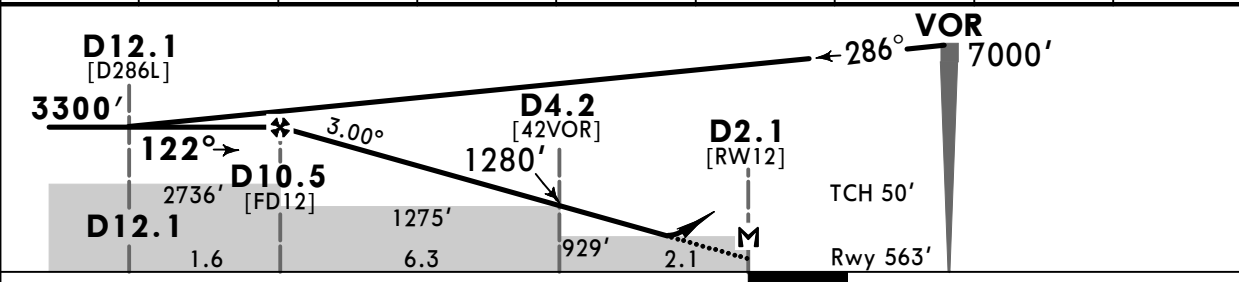
JEPPESEN
5 MAY 23 **(13-1)** Eff 18 May

PLOVDIV, BULGARIA VOR Rwy 12

ATIS 127.205		PLOVDIV Tower 133.6 125.5		
VOR PDV 114.9	Final Apch Crs 122°	D10.5 3300' (2737')	DA/MDA(H) (CONDITIONAL) 930' (367')	Apt Elev 603' Rwy 563'
MISSED APCH: Climb to VOR, then climb on R-122 to D10.0. Climb to 4000', then turn LEFT (MAX 205 KT) to VOR climbing to 7000' and hold.				
Alt Set: hPa		Rwy Elev: 20 hPa	Trans level: By ATC	
DME required.		Baseturn restricted to MAX 205 KT.		Trans alt: 10500'



PDV DME	10.0	9.0	8.0	7.0	6.0	5.0	4.0	3.0
ALTITUDE	3140'	2830'	2510'	2190'	1880'	1560'	1250'	930'



Gnd speed-Kts	70	90	100	120	140	160
Descent Angle 3.00°	372	478	531	637	743	849
MAP at D2.1						
D10.5 to MAP	8.4	7:12	5:36	5:02	4:12	3:36
Timing not authorized for defining the MAP.						

HIALS PAPI PAPI
 PDV **114.9**
 D10.0 on R-122

PANS OPS	Std/State		STRAIGHT-IN LANDING		CIRCLE-TO-LAND	
	with D4.2 CDFA	w/o D4.2 CDFA	DA/MDA(H) 930' (367')	DA/MDA(H) 1280' (717')	Not authorized Southwest of airport	
A	R1300m	ALS out	ALS out	Max Kts	MDA(H)	V
B		R1500m	R1500m	100	1010' (407')	V1500m
C		R1700m	R2400m	135	1110' (507')	V1600m
D				180	1410' (807')	V2400m
				205	1410' (807')	V3600m

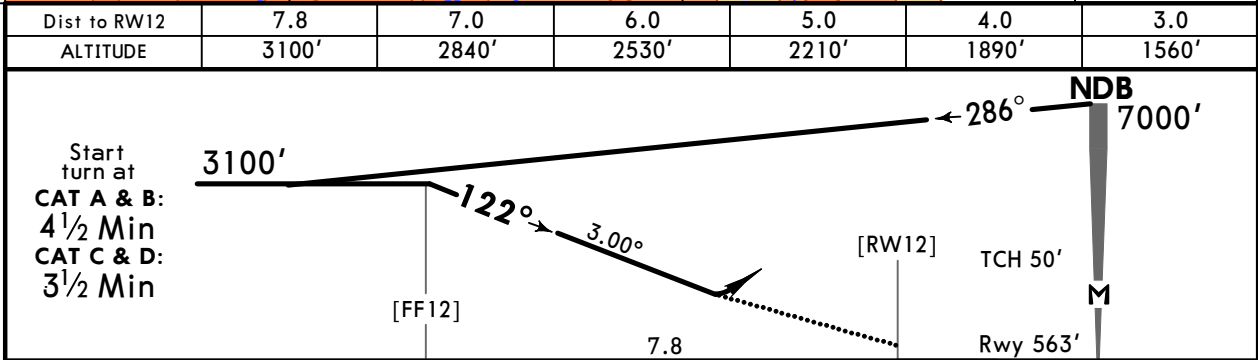
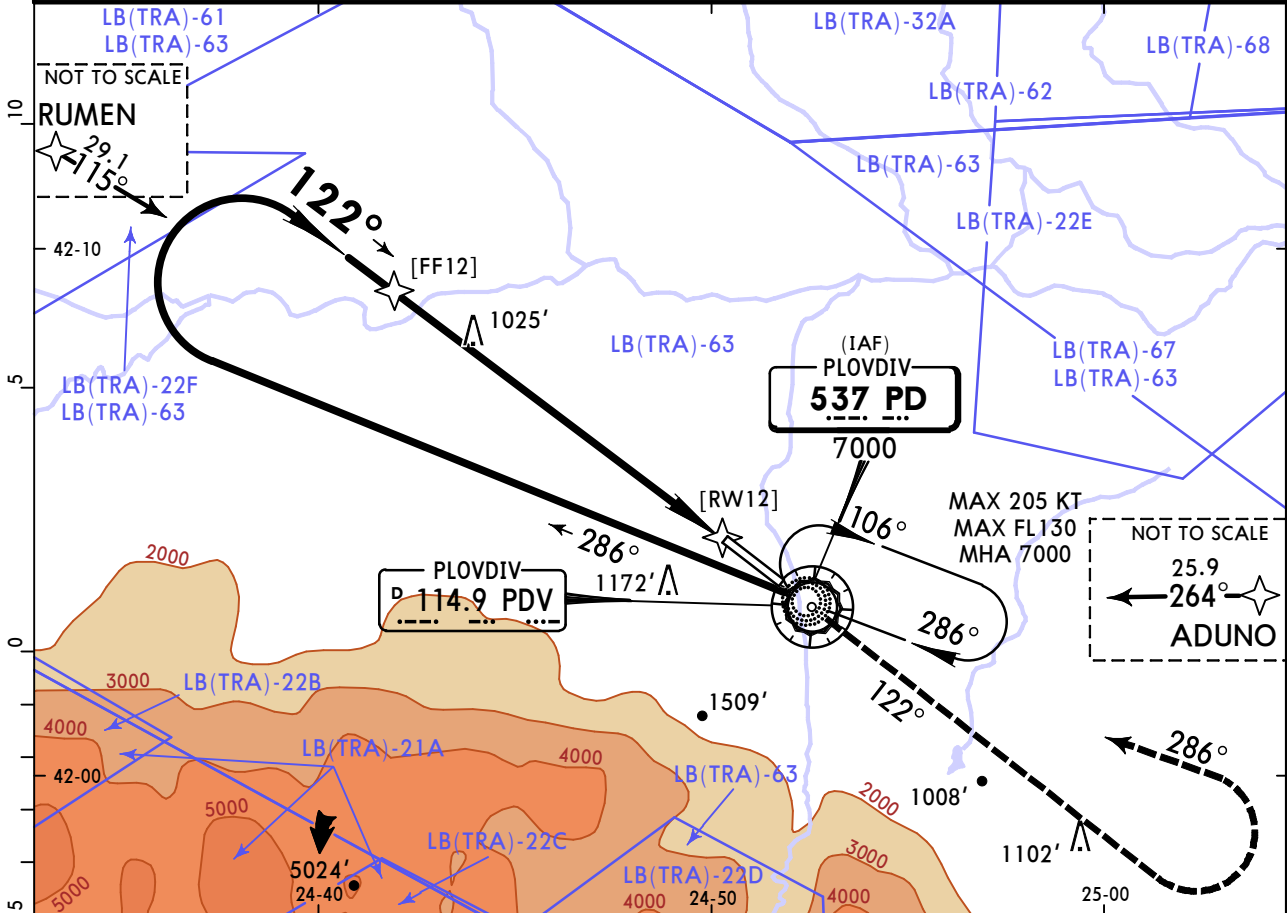
[1] VNAV DA(H) in lieu of MDA(H) depends on operator policy. [2] or higher straight-in minimums
 CHANGES: Transition altitude, altitude on holding, new EASA. © JEPPESEN, 2001, 2023. ALL RIGHTS RESERVED.

LBDP/PDV
PLOVDIV

JEPPESEN
5 MAY 23 **(16-1)** Eff 18 May

PLOVDIV, BULGARIA
NDB Rwy 12

ATIS 127.205			PLOVDIV Tower 133.6 125.5		
NDB PD 537	Final Apch Crs 122°	No FAF	DA/MDA(H) 1330' (767')	Apt Elev 603' Rwy 563'	
MISSED APCH: Climb on track 122° to 4000', then turn LEFT (MAX 205 KT) to intercept 286° to NDB climbing to 7000' to PD NDB and hold.					
Alt Set: hPa		Rwy Elev: 20 hPa	Trans level: By ATC		Trans alt: 10500'
Baseturn restricted to MAX 205 KT.					



Gnd speed-Kts	70	90	100	120	140	160	HIALS
Descent Angle 3.00°	372	478	531	637	743	849	
MAP at NDB							

Timing not authorized for defining the MAP.

PANS OPS	Std/State	STRAIGHT-IN LANDING		CIRCLE-TO-LAND		
		CDFA		Not authorized Southwest of airport		
		DA/MDA(H) 1330' (767')				
		ALS out		Max Kts	MDA(H)	
	A	R1500m		100	1010' (407') 2 V1500m	
B			135	1110' (507') 2 V1600m		
C	R2400m		180	1410' (807') V2400m		
D			205	1410' (807') V3600m		

1 VNAV DA(H) in lieu of MDA(H) depends on operator policy. **2** or higher straight-in minimums

Chart changes since cycle 15-2023

ADD = added chart, REV = revised chart, DEL = deleted chart.

ACT	PROCEDURE IDENT	INDEX	REV DATE	EFF DATE
-----	-----------------	-------	----------	----------

PLOVDIV, (PLOVDIV - LBPD)

TERMINAL CHART CHANGE NOTICES

Chart Change Notices for Airport LBPD

Type: Terminal

Effectivity: Temporary

Begin Date: Immediately

End Date: Until Further Notice

Based on AIP SUP 05/22 Twy E is closed in the segment between Twy A and stand 1. Stands 1 thru 4 are closed. The restrictions are not applicable for military ACFT. Refer also to the latest NOTAMs.