

List of pages in this Trip Kit

Trip Kit Index

Airport Information For EDGS

Terminal Charts For EDGS

Revision Letter For Cycle 16-2023

Change Notices

Notebook

General Information

Location: SIEGERLAND DEU
ICAO/IATA: EDGS / SGE
Lat/Long: N50° 42.46', E008° 04.98'
Elevation: 1966 ft

Airport Use: Public
Daylight Savings: Observed
UTC Conversion: -1:00 = UTC
Magnetic Variation: 2.0° E

Fuel Types: 100 Octane (LL), Mogas, Jet A-1
Repair Types: Minor Airframe, Minor Engine
Customs: Yes
Airport Type: IFR
Landing Fee: Yes
Control Tower: No
Jet Start Unit: No
LLWS Alert: No
Beacon: Yes
Traffic Pattern Altitude: 3000 ft (1034 ft AGL)

Sunrise: 0452 Z
Sunset: 1759 Z

Runway Information

Runway: 04
Length x Width: 1640 ft x 98 ft
Surface Type: grass
TDZ-Elev: 1966 ft

Runway: 13
Length x Width: 5315 ft x 98 ft
Surface Type: asphalt
TDZ-Elev: 1961 ft
Lighting: Edge, ALS, Centerline, REIL

Runway: 22
Length x Width: 1640 ft x 98 ft
Surface Type: grass
TDZ-Elev: 1966 ft

Runway: 31
Length x Width: 5315 ft x 98 ft
Surface Type: asphalt
TDZ-Elev: 1928 ft
Lighting: Edge, ALS, Centerline, REIL

Communication Information

ATIS: 128.705

Langen Radar Radar: 124.900 RCO

Siegerland Information: 120.380 AFIS

EDGS/SGE
SIEGERLAND

JEPPESEN

SIEGERLAND, GERMANY

22 APR 22

10-2

STAR

*ATIS
128.705

Apt Elev
1966

Alt Set: hPa
Trans level: By ATC

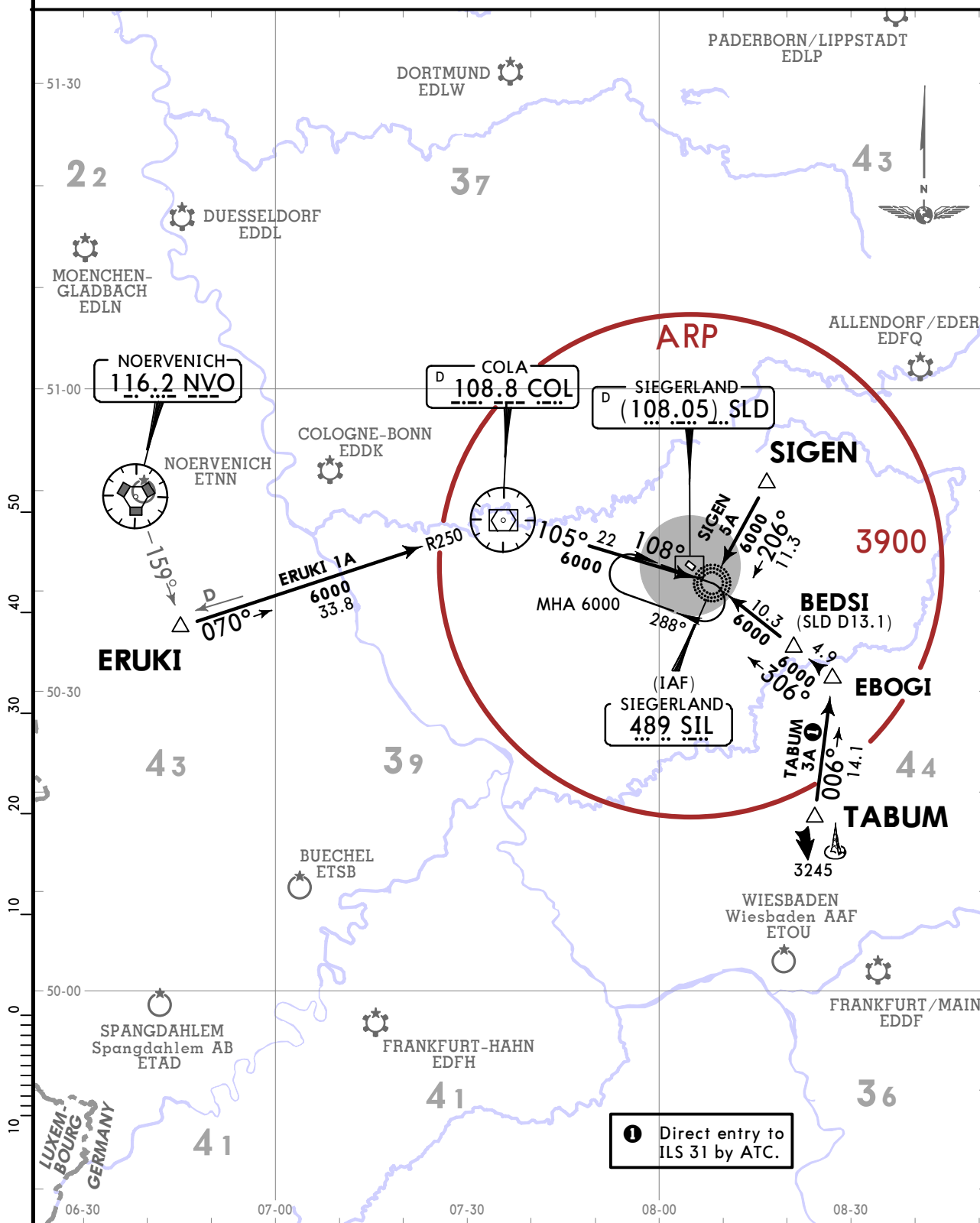
ERUKI 1A [ERUK1A]

SIGEN 5A [SIGE5A], TABUM 3A [TABU3A]

B-RNAV EQUIPMENT NECESSARY

ARRIVALS
(ALL RWYS)

**SPEED: MAX 250 KT BELOW FL100
OR AS BY ATC
NOT APPLICABLE WITHIN AIRSPACE C**



EDGS/SGE
SIEGERLAND

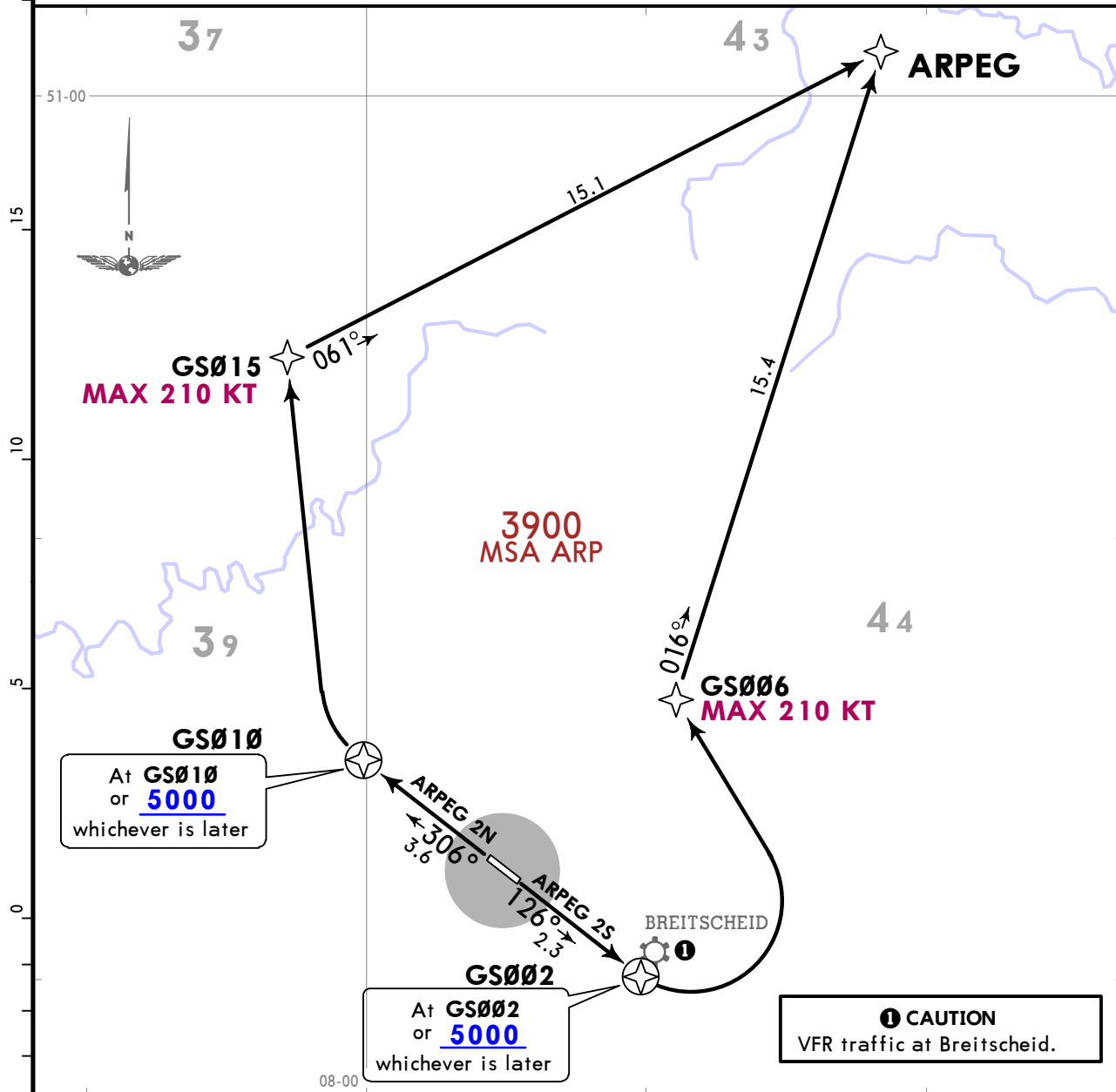
JEPPESEN
22 APR 22 10-3

SIEGERLAND, GERMANY
RNAV SID

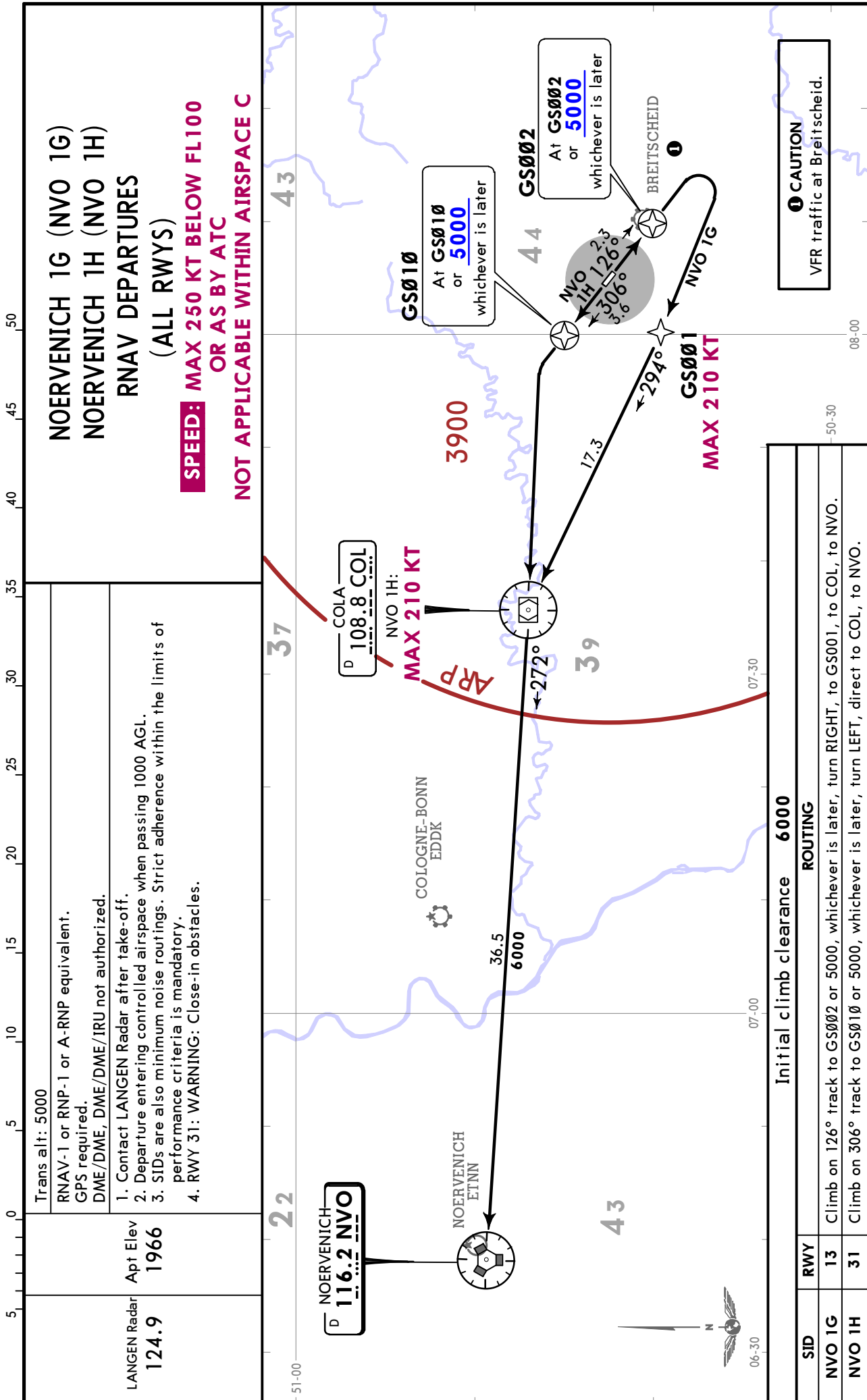
LANGEN Radar 124.9	Apt Elev 1966	Trans alt: 5000
		RNAV-1 or RNP-1 or A-RNP equivalent. GPS required. DME/DME, DME/DME/IRU not authorized.
1. Contact LANGEN Radar after take-off. 2. Departure entering controlled airspace when passing 1000 AGL. 3. SIDs are also minimum noise routings. Strict adherence within the limits of performance criteria is mandatory. 4. RWY 31: WARNING: Close-in obstacles.		

ARPEG 2N [ARPE2N]
ARPEG 2S [ARPE2S]
RNAV DEPARTURES
(ALL RWYS)

**SPEED: MAX 250 KT BELOW FL100
OR AS BY ATC
NOT APPLICABLE WITHIN AIRSPACE C**



Initial climb clearance 6000		
SID	RWY	ROUTING
ARPEG 2N	31	Climb on 306° track to GS010 or 5000, whichever is later, turn RIGHT, direct to GS015, to ARPEG.
ARPEG 2S	13	Climb on 126° track to GS002 or 5000, whichever is later, turn LEFT, direct to GS006, to ARPEG.



EDGS/SGE
SIEGERLAND

JEPPESEN
22 APR 22 (10-3B)

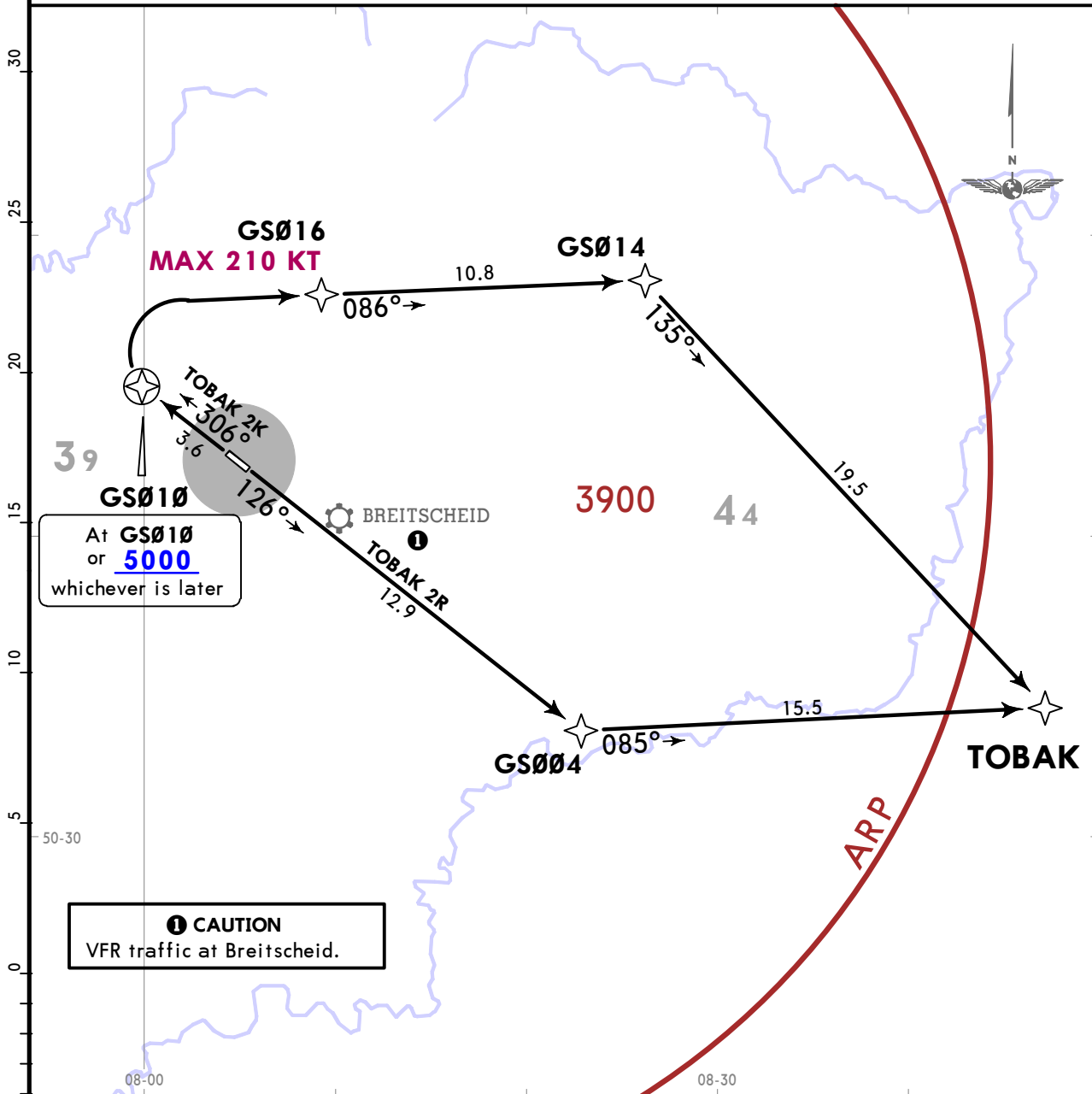
SIEGERLAND, GERMANY
RNAV SID

LANGEN Radar
124.9
Apt Elev
1966

Trans alt: 5000
RNAV-1 or RNP-1 or A-RNP equivalent.
GPS required.
DME/DME, DME/DME/IRU not authorized.
1. Contact LANGEN Radar after take-off.
2. Departure entering controlled airspace when passing 1000 AGL.
3. SIDs are also minimum noise routings. Strict adherence within the limits of performance criteria is mandatory.
4. RWY 31: WARNING: Close-in obstacles.

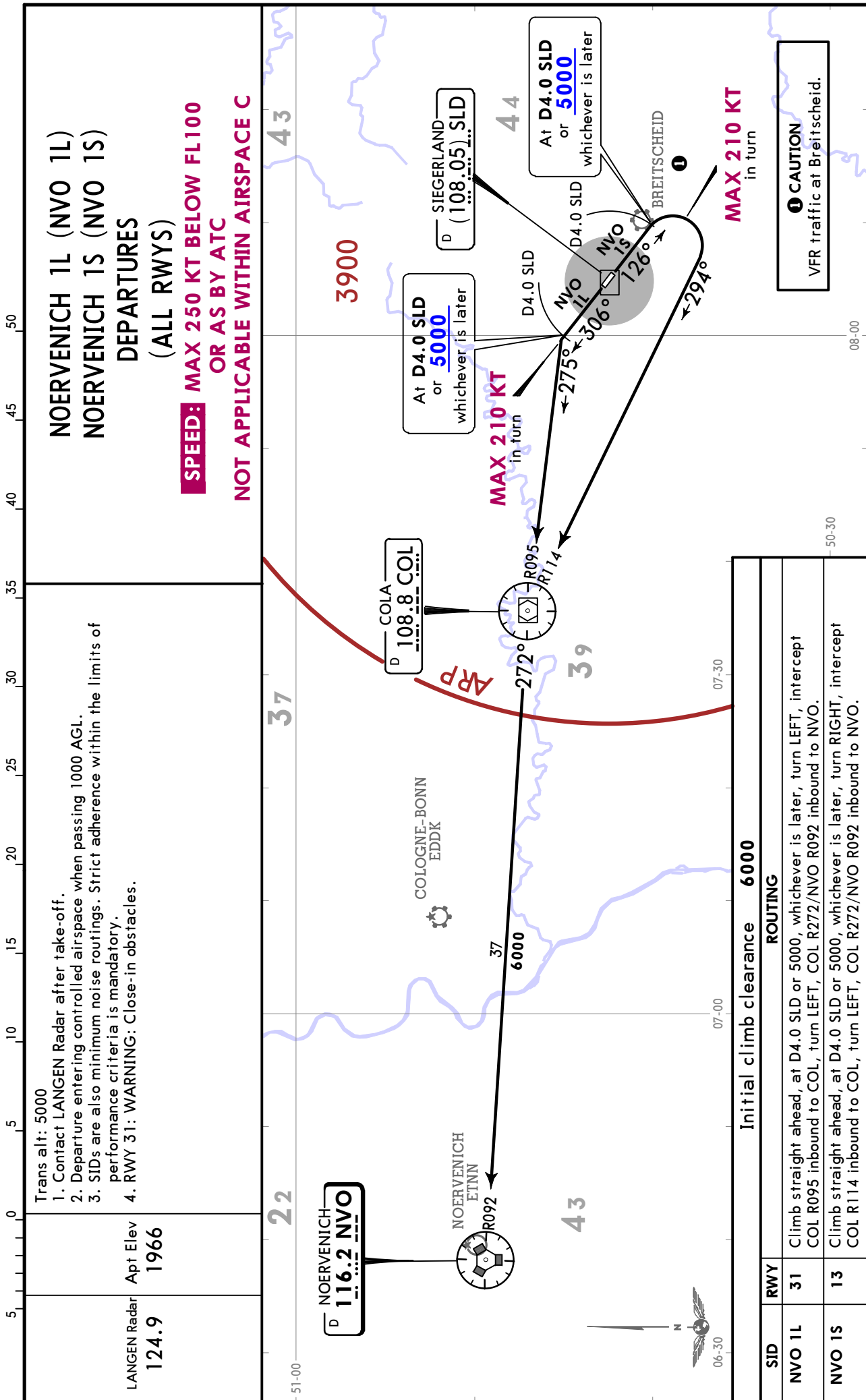
TOBAK 2K [TOBA2K]
TOBAK 2R [TOBA2R]
RNAV DEPARTURES
(ALL RWYS)

**SPEED: MAX 250 KT BELOW FL100
OR AS BY ATC
NOT APPLICABLE WITHIN AIRSPACE C**



Initial climb clearance **6000**

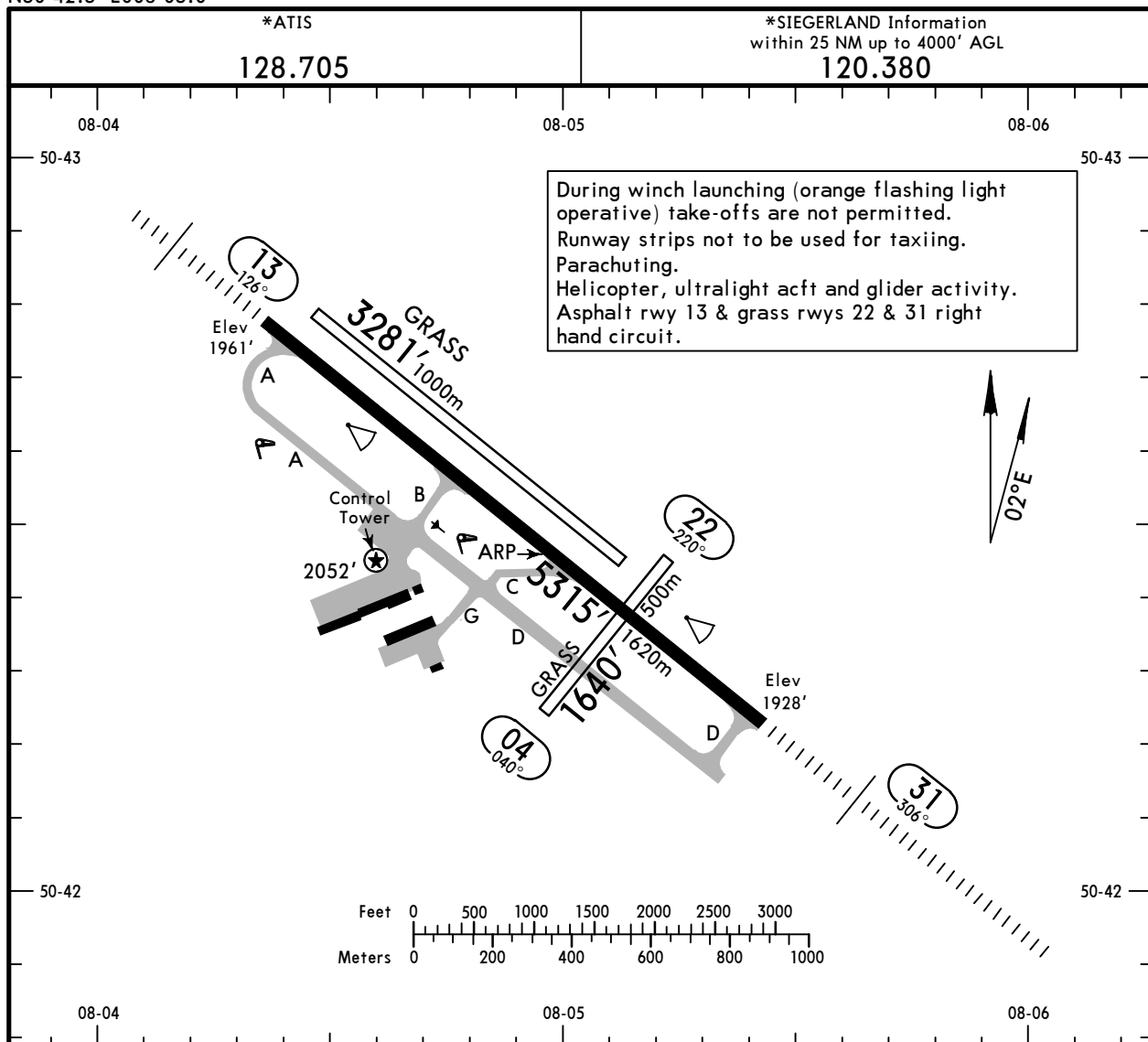
SID	RWY	ROUTING
TOBAK 2K	31	Climb on 306° track to GSØ10 or 5000, whichever is later, turn RIGHT, direct to GSØ16, to GSØ14, to TOBAK.
TOBAK 2R	13	Climb on 126° track to GSØ04, to TOBAK.



EDGS/SGE
 Apt Elev **1966'**
 N50 42.5 E008 05.0

JEPPESEN
 3 MAR 23 **(10-9)**

SIEGERLAND, GERMANY
SIEGERLAND



ADDITIONAL RUNWAY INFORMATION

RWY		USABLE LENGTHS			WIDTH
		Threshold	Landing Beyond Glide Slope	TAKE-OFF	
04					98' 30m
13	HIRL CL HIALS REIL PAPI-L (3.0°) RVR				98' 30m
13	HIRL CL HIALS REIL SFL PAPI-L (3.0°) RVR		4462' 1360m		98' 30m
13	Grass runway				98' 30m

1 Rwy with anti-skid layer.

Standard		TAKE-OFF	
	Day: RL or RCLM Night: RL or CL		Adequate vis ref (Day only)
A			
B	400m		500m
C			
D	NOT APPLICABLE		

EDGS/SGE SIEGERLAND



SIEGERLAND, GERMANY

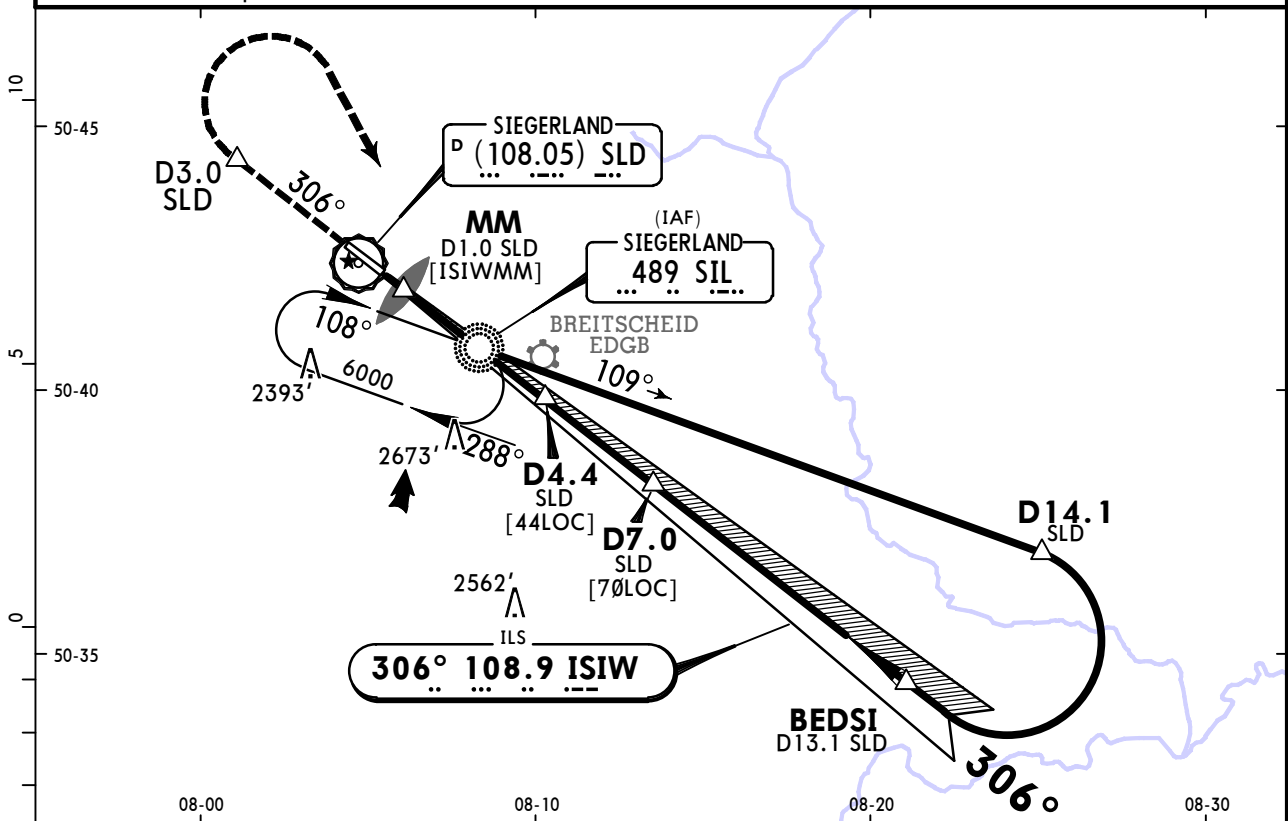
3 MAR 23

(11-1)

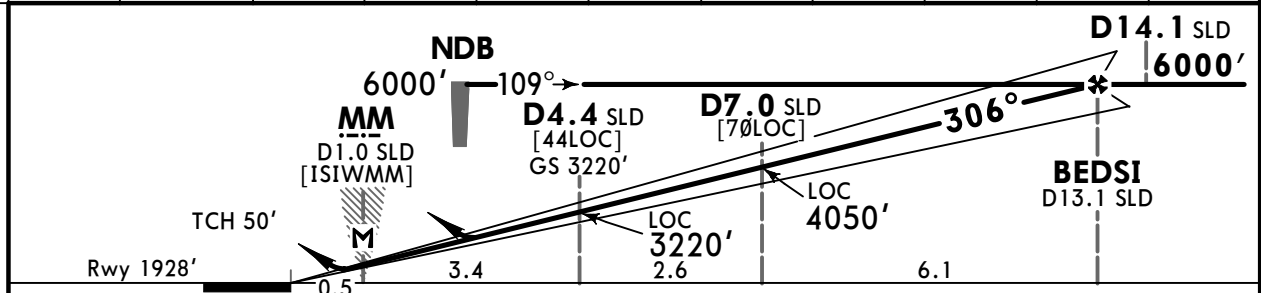
CAT A, B & C

ILS or LOC Rwy 31

*ATIS 128.705		LANGEN Radar (APP) 124.9		*SIEGERLAND Information within 25 NM up to 4000' AGL 120.380		3900 MSA ARP
LOC ISIW 108.9	Final Apch Crs 306°	BEDSI 6000' (4072')	ILS DA(H) Refer to Minimums	Apt Elev 1966' Rwy 1928'		
MISSED APCH: Climb on 306° to D3.0 SLD, then turn RIGHT to NDB climbing to 6000'.						
Alt Set: hPa		Rwy Elev: 69 hPa		Trans level: By ATC		Trans alt: 5000'
1. DME required. 2. Arrivals leaving controlled airspace when passing 1000' AGL. 3. Expect VFR traffic at Breitscheid airport.						



LOC (GS out)	SLD DME	2.0	3.0	4.0	5.0	6.0	8.0	9.0	10.0	11.0
	ALTITUDE	2460'	2780'	3100'	3420'	3730'	4370'	4690'	5010'	5330'



Gnd speed-Kts	70	90	100	120	140	160	HIALS REIL PAPI 306° D3.0 SLD
ILS GS or LOC Descent angle 3.00°	372	478	531	637	743	849	
MAP at MM/D1.0 SLD							

PANS OPS	STRAIGHT-IN LANDING RWY 31 I			CIRCLE-TO-LAND		
	ILS			LOC (GS out)		
	DA(H) A: 2151' (223') B: 2161' (233') C: 2171' (243')			CDFA DA/MDA(H) 2420' (492')		
	FULL	ALS out	ALS out	Not authorized Southwest of apt		
A	RVR 550m 2	RVR 1200m	RVR 1500m		Max Kts 100 2500' (534') 1500m	
B		RVR 1300m	RVR 2300m		135 2600' (634') 1600m	
C		NOT APPLICABLE		NOT APPLICABLE		180 2700' (734') 2400m
D	NOT APPLICABLE			NOT APPLICABLE		D

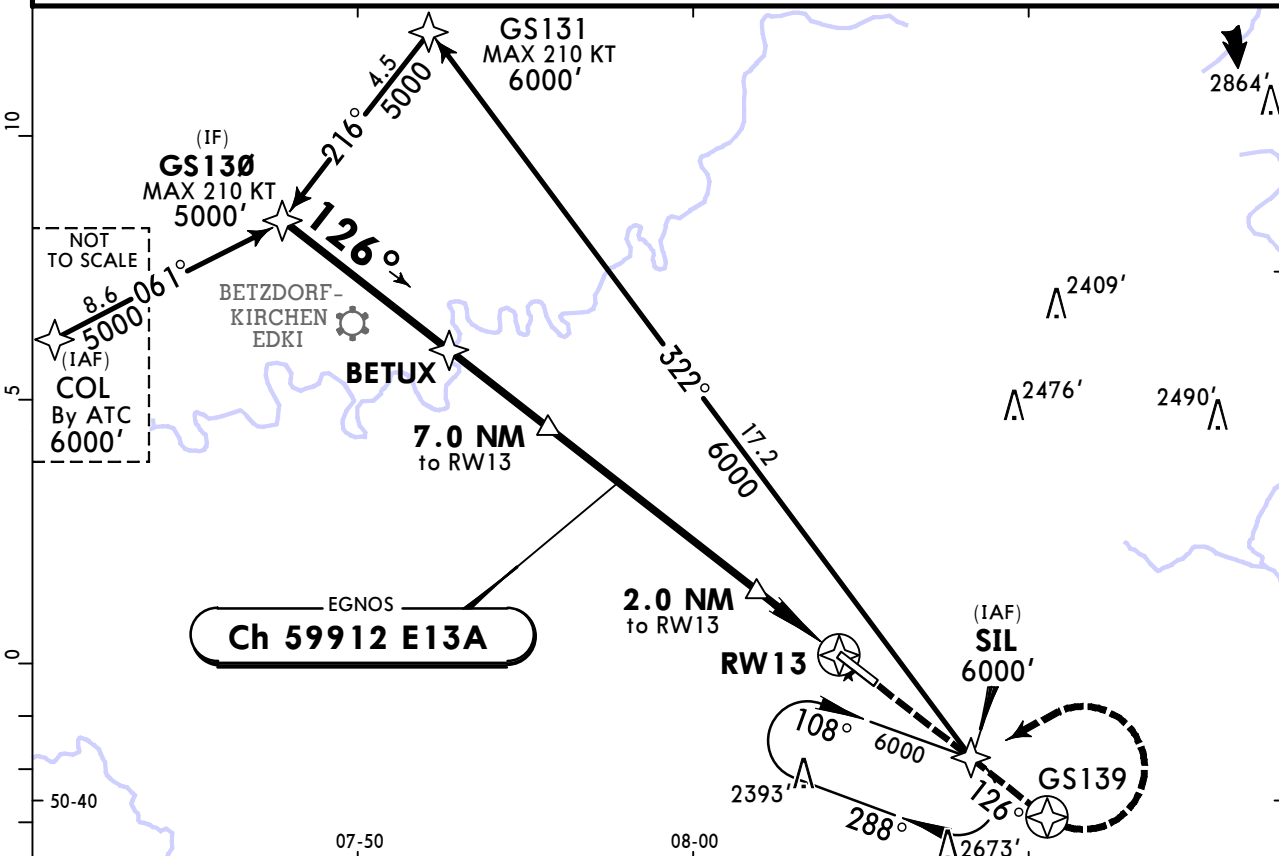
1 CAT C acft PPR. 2 RVR 750m when a Flight Director or Autopilot or HUD to DA is not used.
 CHANGES: None. © JEPPESEN, 1999, 2022. ALL RIGHTS RESERVED.

EDGS/SGE SIEGERLAND

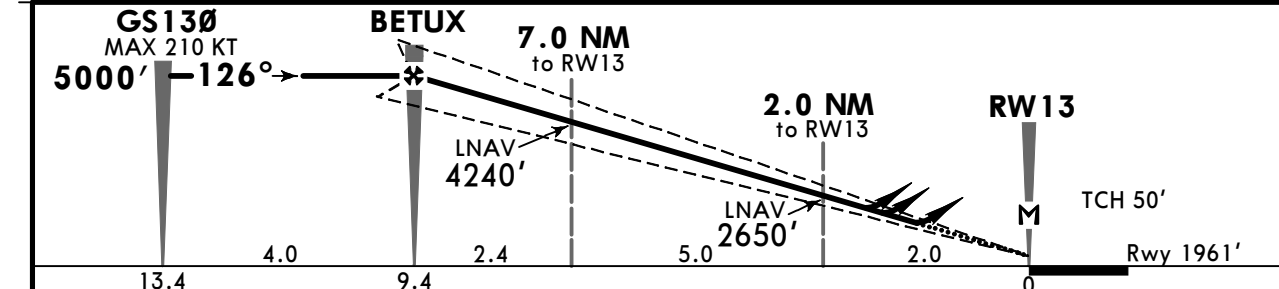
JEPPESEN
1 APR 22 **(12-1)** **CAT A, B & C**

SIEGERLAND, GERMANY RNP Rwy 13

BRIEFING STRIP™	*ATIS 128.705	LANGEN Radar (APP) 124.9	*SIEGERLAND Information within 25 NM up to 4000' AGL 120.380		<div style="border: 1px solid black; border-radius: 50%; width: 100px; height: 100px; margin: 0 auto; display: flex; align-items: center; justify-content: center;">3900</div> MSA ARP	
	EGNOS CH 59912 E13A	Final Apch Crs 126°	BETUX 5000' (3039')	LPV DA(H) 2371' (410')		Apt Elev 1966' Rwy 1961'
	MISSED APCH: Climb on 126° to GS139 or 3000', whichever is later, then turn LEFT direct to SIL climbing to 6000'.					
Alt Set: hPa		Rwy Elev: 70 hPa	Trans level: By ATC		Trans alt: 5000'	
1. Arrivals leaving controlled airspace when passing 1000' AGL. 2. Expect VFR traffic at Breitscheid airport. 3. Baro-VNAV not authorized below -15° C.						



Dist to RW13	9.0	8.0	7.0	6.0	5.0	4.0	3.0	2.0
ALTITUDE	4880'	4560'	4240'	3930'	3610'	3290'	2970'	2650'



Gnd speed-Kts	70	90	100	120	140	160	HIALS REIL PAPI ↑ 126°	GS139 3000' whichever is later
Glide Path Angle	3.00°	372	478	531	637	743		

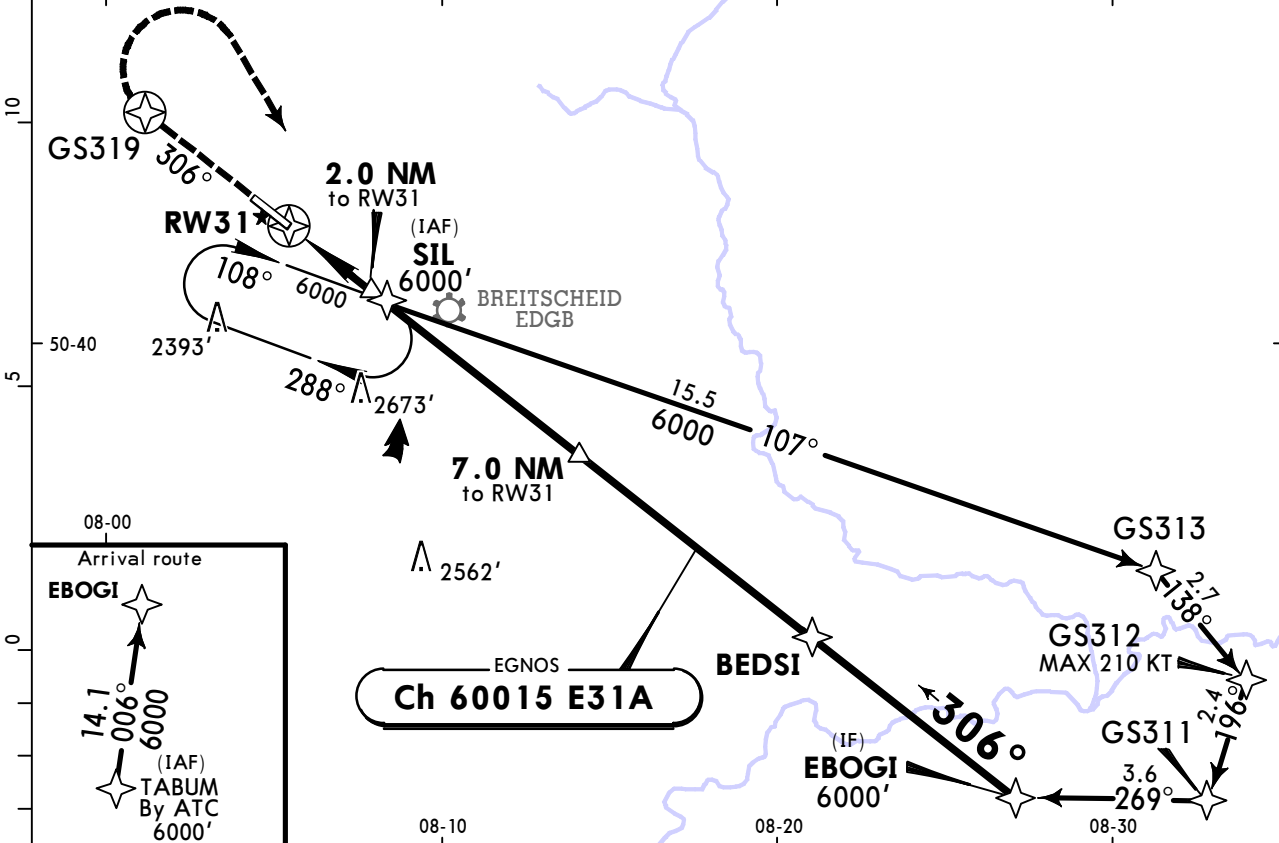
Standard		STRAIGHT-IN LANDING RWY 13			
LPV		LNAV/VNAV		LNAV CDFA	
DA(H) 2371' (410')		A: 2258' (297') B: 2265' (304') C: 2273' (312')		DA/MDA(H) 2370' (409')	
ALS out		ALS out		ALS out	
A	RVR 1500m	RVR 1500m	RVR 900m	RVR 1400m	RVR 1500m
B		RVR 1500m	RVR 1000m		RVR 1500m
C	RVR 1900m			RVR 1500m	RVR 1900m
D	NOT APPLICABLE				

EDGS/SGE SIEGERLAND

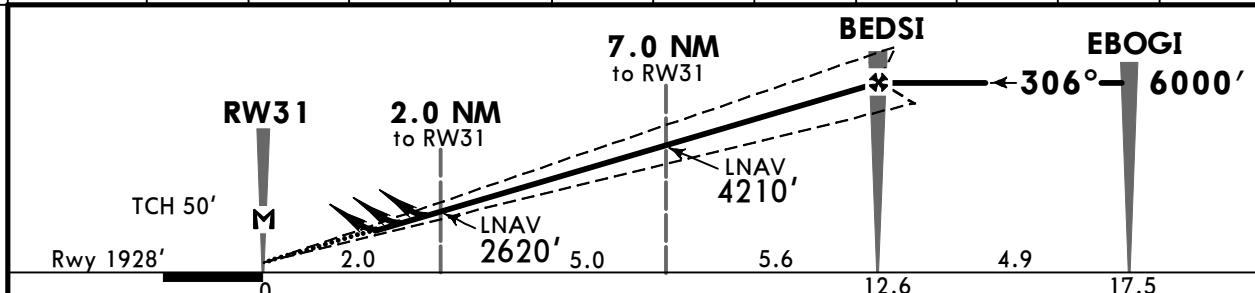
JEPPESEN SIEGERLAND, GERMANY RNP Rwy 31

1 APR 22 (12-2) CAT A, B & C

*ATIS 128.705		LANGEN Radar (APP) 124.9		*SIEGERLAND Information within 25 NM up to 4000' AGL 120.380		<div style="border: 1px solid black; border-radius: 50%; width: 60px; height: 60px; margin: 0 auto; display: flex; align-items: center; justify-content: center;">3900</div> <p>MSA ARP</p>
EGNOS CH 60015 E31A	Final Apch Crs 306°	BEDSI 6000' (4072')	LPV DA(H) Refer to Minimums	Apt Elev 1966' Rwy 1928'		
MISSED APCH: Climb on 306° to GS319 or 3000', whichever is later, then turn RIGHT direct to SIL climbing to 6000'.						
Alt Set: hPa		Rwy Elev: 69 hPa		Trans level: By ATC		Trans alt: 5000'
1. Arrivals leaving controlled airspace when passing 1000' AGL. 2. Expect VFR traffic at Breitscheid airport. 3. Baro-VNAV not authorized below -15° C.						



DIST to RW31	2.0	3.0	4.0	5.0	6.0	7.0	8.0	9.0	10.0	11.0	12.0
ALTITUDE	2620'	2940'	3260'	3570'	3890'	4210'	4530'	4850'	5170'	5490'	5800'



Gnd speed-Kts	70	90	100	120	140	160	HIALS REIL PAPI	306° ↑	GS319 3000' whichever is later
Glide Path Angle	3.00°	372	478	531	637	849			
MAP at RW31									

Standard		LPV CAT I			STRAIGHT-IN LANDING RWY 31			LNAV CDFA	
		A: 2151' (223')			A: 2254' (326')			LNAV CDFA	
		B: 2161' (233')			B: 2260' (332')			DA/MDA(H) 2360' (432')	
		C: 2170' (242')			C: 2267' (339')				
		ALS out		ALS out		ALS out			
A		RVR 1200m		RVR 800m		RVR 1500m		RVR 1500m	
B	RVR 550m I	RVR 1300m				RVR 1300m		RVR 2000m	
C									
D		NOT APPLICABLE							
I RVR 750m when a Flight Director or Autopilot or HUD to DA is not used.									

Chart changes since cycle 15-2023

ADD = added chart, REV = revised chart, DEL = deleted chart.

ACT	PROCEDURE IDENT	INDEX	REV DATE	EFF DATE
-----	-----------------	-------	----------	----------

SIEGERLAND, (SIEGERLAND - EDGS)

TERMINAL CHART CHANGE NOTICES

No Chart Change Notices for Airport EDGS

Chart Change Notices for Country DEU

Type: Gen Tmnl
Effectivity: Permanent
Begin Date: Immediately
End Date: No end date

Location/airport name changed from Monchengladbach to Moenchengladbach.

Type: Gen Tmnl
Effectivity: Permanent
Begin Date: 20210326
End Date: No end date

Use of SID RNAV OVERLAY: Pilots of GPS/FMS-RNAV-equipped aircraft should, if possible, use the defined supplementary GPS/FMS/RNAV procedures which are published as "OVERLAY" to a conventional procedure. Please refer also to ATC Germany pages for additional information.

Type: Gen Tmnl
Effectivity: Permanent
Begin Date: Immediately
End Date: No end date

Location/airport name changed from Buchel to Buechel, Buckeburg to Bueckeburg, Norvenich to Noervenich.

Type: Gen Tmnl
Effectivity: Temporary
Begin Date: Immediately
End Date: Until Further Notice

Jeppesen charted take-off minimums are determined according to the available RWY lights. In Germany, Low Visibility Procedures (LVP) are only available for the following airports: EDDB, EDDC, EDDE, EDDF, EDDG, EDDH, EDDK, EDDL, EDDM, EDDN, EDDP, EDDR, EDDS, EDDV, EDDW, EDFH, EDHI, EDHL, EDJA, EDLN, EDLP, EDLV, EDLW, EDMA, EDNY, EDQM, EDSB, EDTL, EDTY, EDVE, EDVK. All other German airports are not approved for Low Visibility Take-off Operations (LVTO) with an RVR below 400m because of missing LVP.