

## List of pages in this Trip Kit

Trip Kit Index

Airport Information For LGKF

Terminal Charts For LGKF

Revision Letter For Cycle 11-2019

Change Notices

Notebook

## General Information

Location: KEFALLINIA GRC  
ICAO/IATA: LGKF / EFL  
Lat/Long: N38° 07.2', E020° 30.0'  
Elevation: 59 ft

Airport Use: Public  
Daylight Savings: Observed  
UTC Conversion: -2:00 = UTC  
Magnetic Variation: 4.0° E

Fuel Types: Jet A-1  
Customs: Yes  
Airport Type: IFR  
Landing Fee: Yes  
Control Tower: Yes  
Jet Start Unit: No  
LLWS Alert: No  
Beacon: Yes

Sunrise: 0317 Z  
Sunset: 1805 Z

## Runway Information

Runway: 14  
Length x Width: 7992 ft x 148 ft  
Surface Type: asphalt  
TDZ-Elev: 32 ft  
Lighting: Edge, REIL, Part time

Runway: 32  
Length x Width: 7992 ft x 148 ft  
Surface Type: asphalt  
TDZ-Elev: 50 ft  
Lighting: Edge, REIL, Part time  
Displaced Threshold: 912 ft

## Communication Information

ATIS: 126.450  
Kefallinia Tower: 122.100 AFIS  
Kefallinia Tower: 25.780 AFIS Military  
Kefallinia Tower: 122.250 AFIS  
Andravidia Approach: 36.230 Military  
Andravidia Approach: 120.650  
Andravidia Approach: 122.100  
Kefallinia Radio: 563.700 AFIS Air-Ground

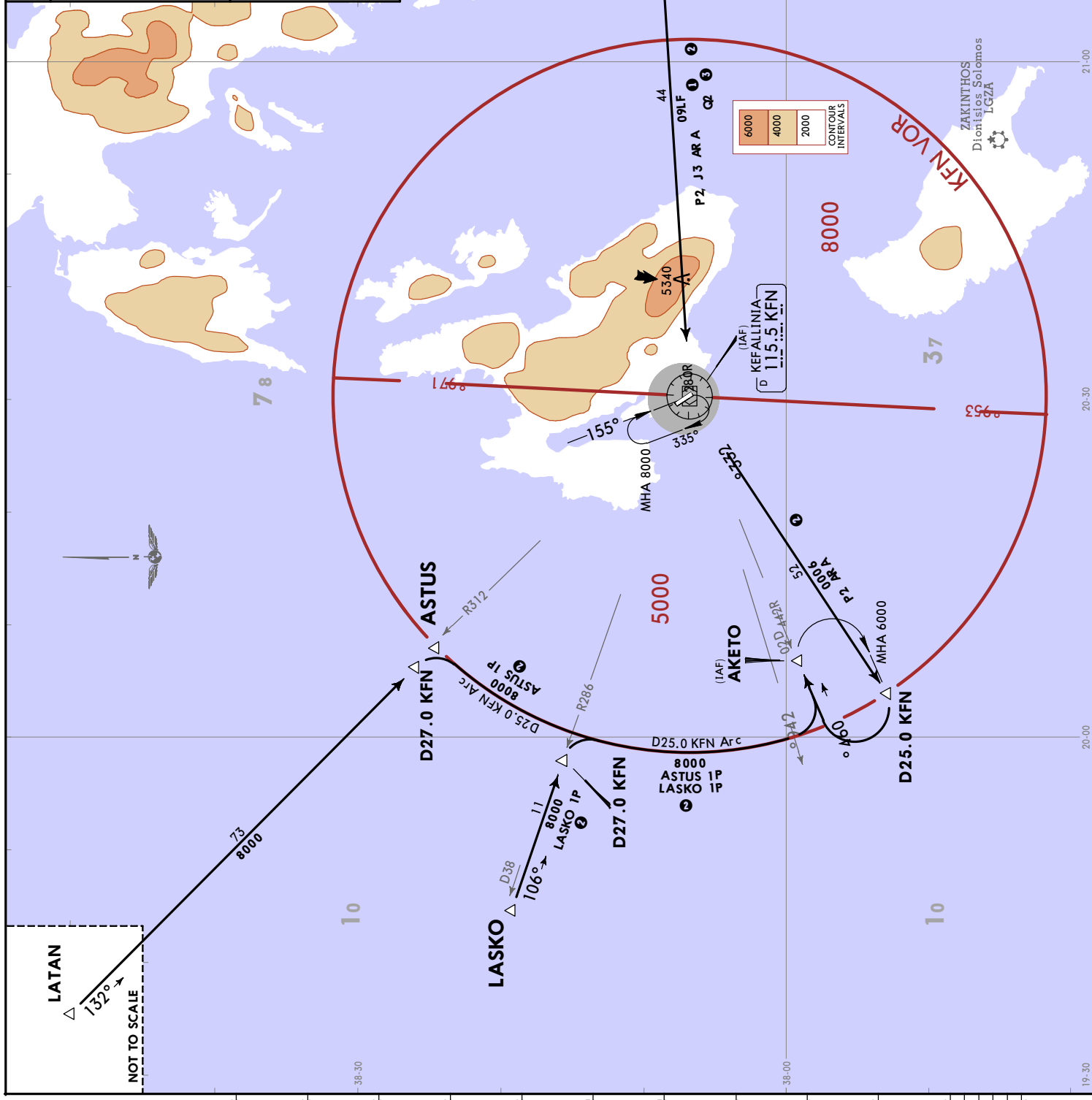
Kefallinia Radio: 298.900 AFIS Air-Ground



*ATIS	126.450
Apt Elev	59
Alt Set: hPa	
Trans level: By ATC	

ARA 3J [ARA3J]  
ARA 2P [ARA2P]  
ARA 2Q [ARA2Q]  
ASTUS 1P [ASTU1P]  
LASKO 1P [LASK1P]  
RWY 32 ARRIVALS

- ARA 3J:** Terminate at holding and connected with VOR Z RWY 32 approach.
- ARA 2P, ASTUS 1P, LASKO 1P:** Terminate at holding and connected with VOR Y RWY 32 approach.
- ARA 2Q:** Without entering holding pattern and connected with VOR Y RWY 32 approach.

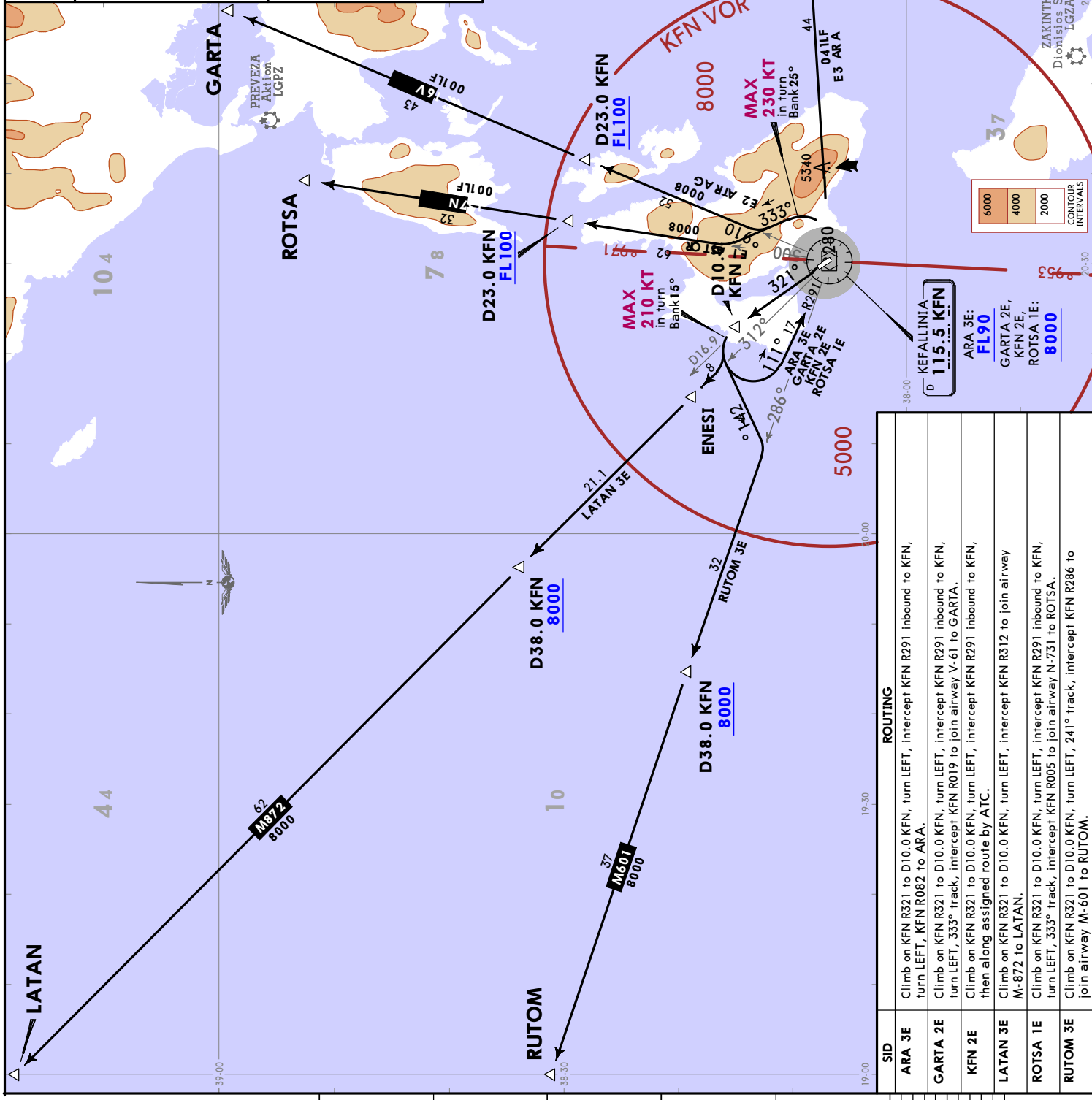


Trans alt: 8000 When an altitude higher than TA is designated, an equivalent FL shall be specified by ATC.
Apt Elev 59
<b>ARA 3E [ARA3E]</b>
<b>GARTA 2E [GART2E]</b>
<b>KFN 2E [KFN2E]</b>
<b>LATAN 3E [LATA3E]</b>
<b>RO TSA 1E [ROTS1E]</b>
<b>RUTOM 3E [RUTO3E]</b>
<b>RWY 32 DEPARTURES</b>

These SIDs require a visual climb up to 200, then continue with a minimum climb gradient of

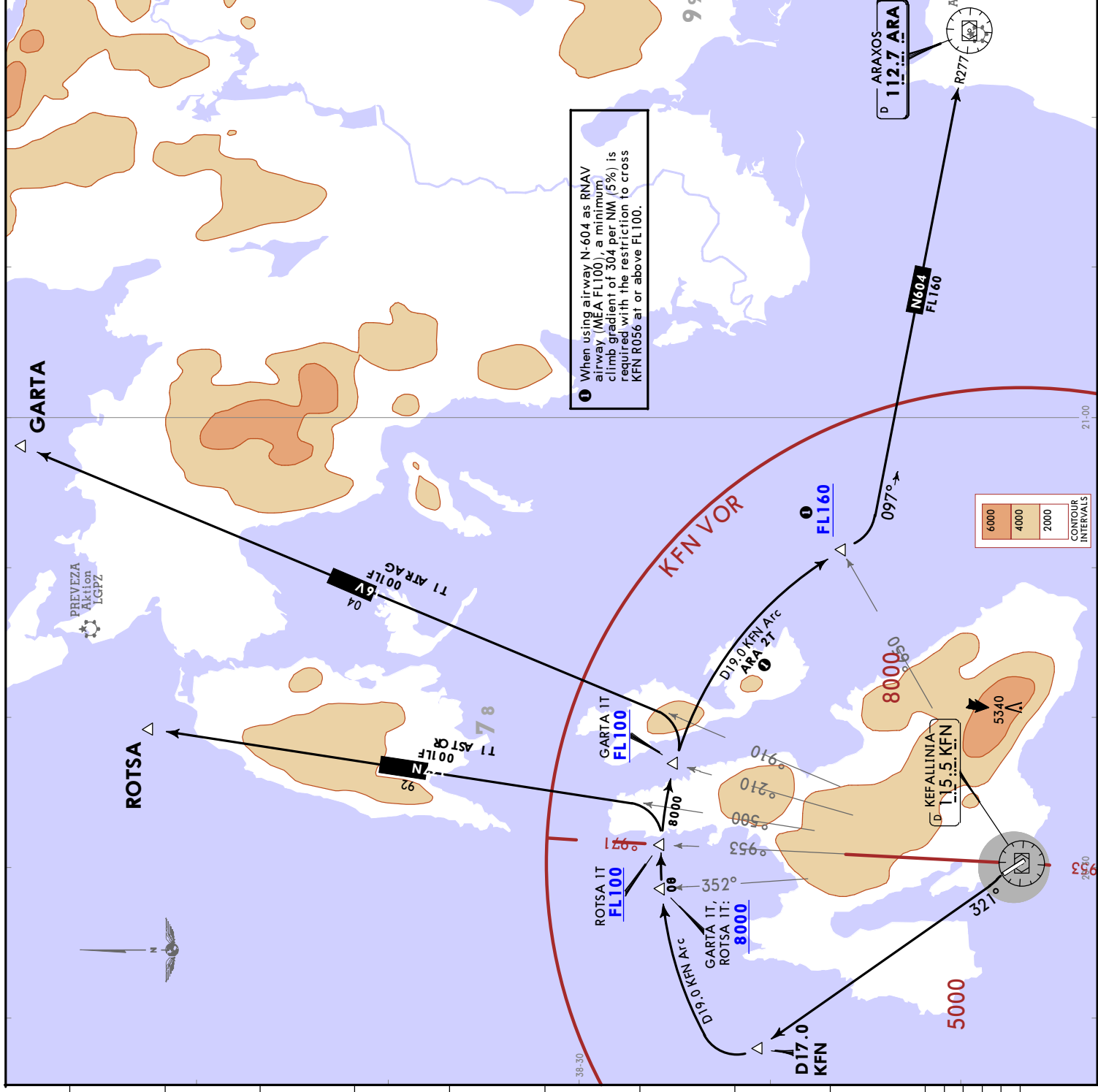
**ARA 3E:** 304 per NM (5%) up to FL90.  
**GARTA 2E, ROTSA 1E:** 286 per NM (4.7%) up to FL100.  
**KFN 2E, LATAN 3E, RUTOM 3E:** 286 per NM (4.7%) up to 8000.

Gnd speed-KT	75	100	150	200	250	300
304 per NM	380	506	760	1013	1266	1519
286 per NM	357	476	714	952	1190	1428



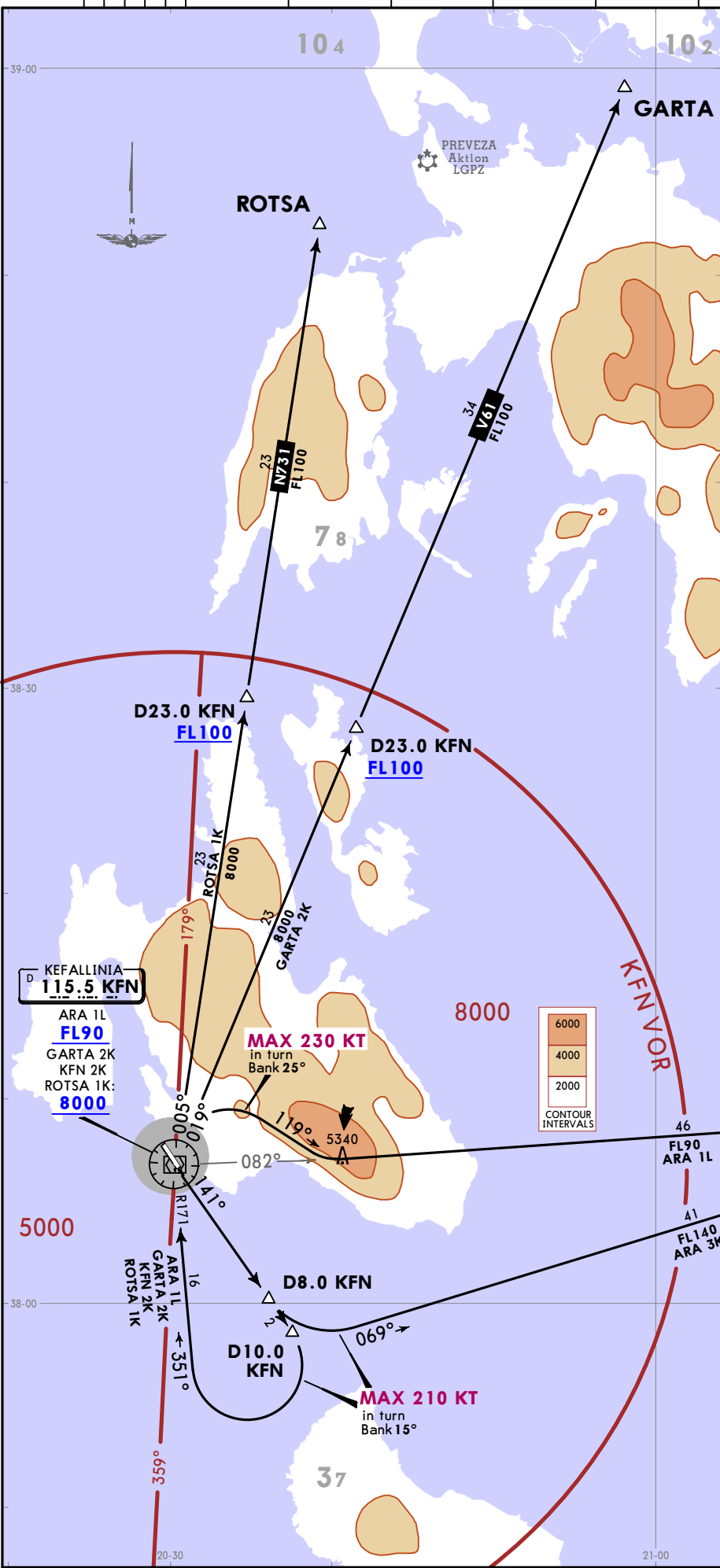
SID	ROUTING
<b>ARA 3E</b>	Climb on KFN R321 to D10.0 KFN, turn LEFT, intercept KFN R291 inbound to KFN, turn LEFT, KFN R082 to ARA.
<b>GARTA 2E</b>	Climb on KFN R321 to D10.0 KFN, turn LEFT, intercept KFN R291 inbound to KFN, turn LEFT, 333° track, intercept KFN R019 to join airway V-61 to GARTA.
<b>KFN 2E</b>	Climb on KFN R321 to D10.0 KFN, turn LEFT, intercept KFN R291 inbound to KFN, then along assigned route by ATC.
<b>LATAN 3E</b>	Climb on KFN R321 to D10.0 KFN, turn LEFT, intercept KFN R312 to join airway M-872 to LATAN.
<b>RO TSA 1E</b>	Climb on KFN R321 to D10.0 KFN, turn LEFT, intercept KFN R291 inbound to KFN, turn LEFT, 333° track, intercept KFN R005 to join airway N-731 to ROTSA.
<b>RUTOM 3E</b>	Climb on KFN R321 to D10.0 KFN, turn LEFT, 241° track, intercept KFN R286 to join airway M-601 to RUTOM.

Trans alt: 8000 When an altitude higher than TA is designated, an equivalent FL shall be specified by ATC.	Apt Elev 59																					
<p><b>ARA 2T [ARA2T]</b>  <b>GARTA 1T [GART1T]</b>  <b>RO TSA 1T [ROTS1T]</b>  <b>RWY 32 DEPARTURES</b></p>																						
<p>These SIDs require a visual climb up to 200, then continue with a minimum climb gradient of</p> <p><b>ARA 2T</b>: 340 per NM (5.6%) up to FL160.  <b>GARTA 1T</b>: 304 per NM (5%) up to FL100.  <b>RO TSA 1T</b>: 340 per NM (5.6%) up to FL100.</p>																						
<table border="1"> <thead> <tr> <th>Gnd speed-KT</th> <th>75</th> <th>100</th> <th>150</th> <th>200</th> <th>250</th> <th>300</th> </tr> </thead> <tbody> <tr> <td>340 per NM</td> <td>425</td> <td>567</td> <td>851</td> <td>1134</td> <td>1418</td> <td>1701</td> </tr> <tr> <td>304 per NM</td> <td>380</td> <td>506</td> <td>760</td> <td>1013</td> <td>1266</td> <td>1519</td> </tr> </tbody> </table>		Gnd speed-KT	75	100	150	200	250	300	340 per NM	425	567	851	1134	1418	1701	304 per NM	380	506	760	1013	1266	1519
Gnd speed-KT	75	100	150	200	250	300																
340 per NM	425	567	851	1134	1418	1701																
304 per NM	380	506	760	1013	1266	1519																
<p><b>SID ROUTING</b></p> <p><b>ARA 2T</b> Climb on KFN R321 to D17.0 KFN, turn RIGHT, along D19.0 KFN Arc, when passing KFN R056 turn LEFT, join airway N-604 to ARA.</p> <p><b>GARTA 1T</b> Climb on KFN R321 to D17.0 KFN, turn RIGHT, along D19.0 KFN Arc, when passing KFN R012 turn LEFT, join airway V-61 to GARTA.</p> <p><b>RO TSA 1T</b> Climb on KFN R321 to D17.0 KFN, turn RIGHT, along D19.0 KFN Arc, when passing KFN R359 turn LEFT, join airway N-731 to ROTSA.</p>																						



CHANGES: New format.

LGKF/EHL  
ANNA POLLATOU 2 MAR 18 (10-3B)  
JEPPESSEN



Apt Elev 59  
Trans alt: 8000  
When an altitude higher than TA is designated, an equivalent FL shall be specified by ATC.

- ARA 3K [ARA3K]
- ARA 1L [ARA1L]
- GARTA 2K [GART2K]
- KFN 2K [KFN2K]
- RO TSA 1K [RO TSA1K]
- RWY 14 DEPARTURES

These SIDs require a visual climb up to 200, then continue with a minimum climb gradient of

- ARA 3K: 304 per NM (5%) up to FL140.
- ARA 1L: 334 per NM (5.5%) up to 9000.
- GARTA 2K, ROTSA 1K: 280 per NM (4.6%) up to FL100.
- KFN 2K: 280 per NM (4.6%) up to 8000.

Gnd speed-KT	75	100	150	200	250	300
334 per NM	418	557	835	1114	1392	1671
304 per NM	380	506	760	1013	1266	1519
280 per NM	349	466	699	932	1165	1398

SID	ROUTING
ARA 3K	Climb on KFN R141 to D8.0 KFN, turn LEFT, intercept ARA R249 inbound to ARA.
ARA 1L	Climb on KFN R141 to D10.0 KFN, turn RIGHT, intercept KFN R171 inbound to KFN, turn RIGHT, 119° track, intercept KFN R082 to ARA.
GARTA 2K	Climb on KFN R141 to D10.0 KFN, turn RIGHT, intercept KFN R171 inbound to KFN, turn RIGHT, KFN R019 to join airway V-61 to GARTA.
KFN 2K	Climb on KFN R141 to D10.0 KFN, turn RIGHT, intercept KFN R171 inbound to KFN, then along assigned route by ATC.
RO TSA 1K	Climb on KFN R141 to D10.0 KFN, turn RIGHT, intercept KFN R171 inbound to KFN, turn RIGHT, KFN R005 to join airway N-731 to ROTSA.

- ARA 3K [ARA3K]
- ARA 1L [ARA1L]
- GARTA 2K [GART2K]
- KFN 2K [KFN2K]
- RO TSA 1K [RO TSA1K]
- RWY 14 DEPARTURES

KEFALLINIA, GREECE  
SID

© JEPPESSEN, 2018. ALL RIGHTS RESERVED.

**LGKF/EFL**

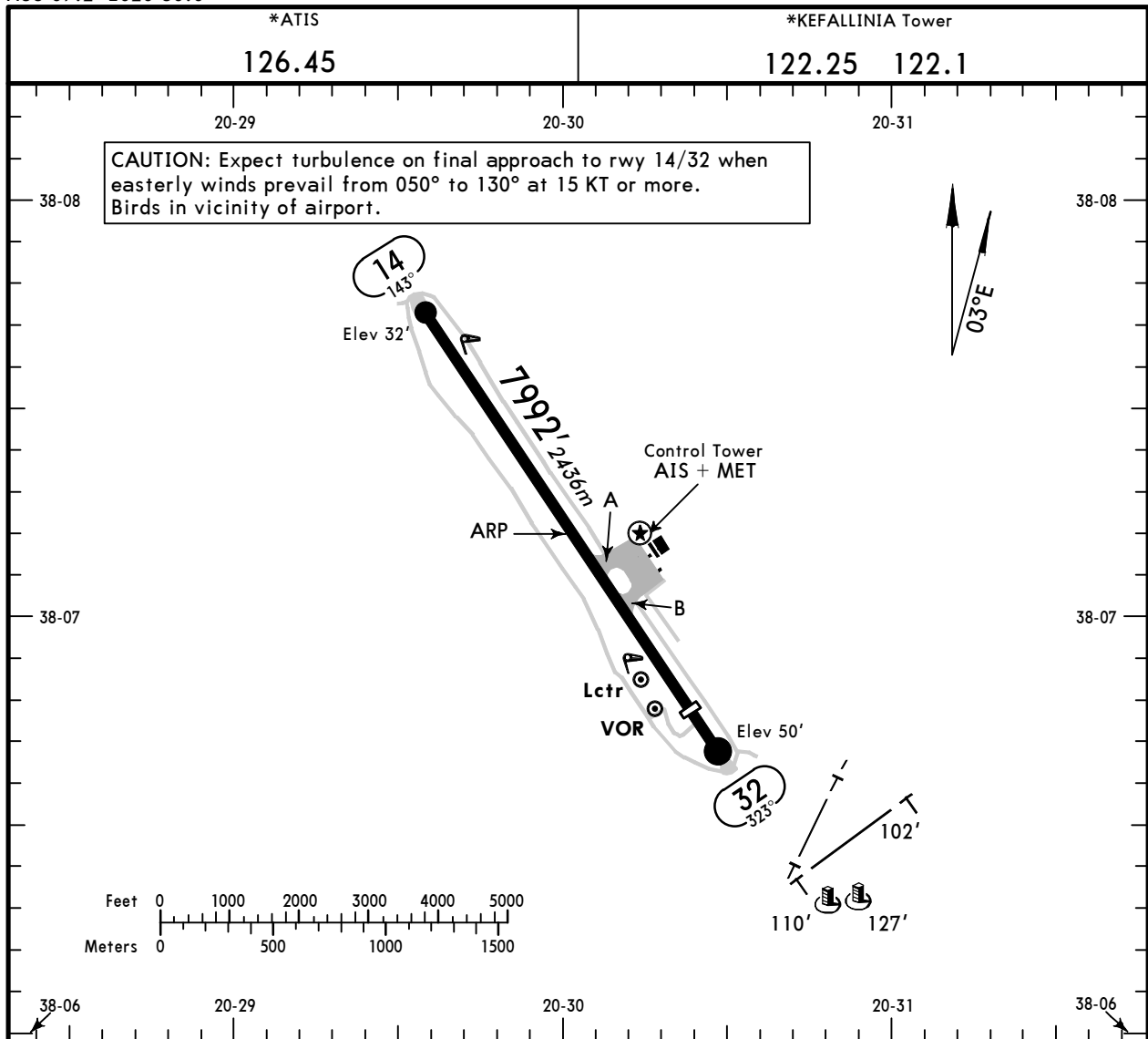
Apt Elev **59'**  
N38 07.2 E020 30.0

**JEPPesen**

16 OCT 09 **(10-9)** Eff **22 Oct**

**KEFALLINIA, GREECE**

**KEFALLINIA**



**ADDITIONAL RUNWAY INFORMATION**

RWY				USABLE LENGTHS		TAKE-OFF	WIDTH
	HIRL	REIL	PAPI-L (angle)	Threshold	Glide Slope		
14			PAPI-L (angle 3.01°)				148'
32			PAPI-L (angle 3.0°)	7080'	2158m		45m

Standard		TAKE-OFF 1	
LVP must be in Force		All Rwys	
	RCLM (DAY only) or RL	RCLM (DAY only) or RL	NIL (DAY only)
A			
B	250m	400m	500m
C			
D	300m		

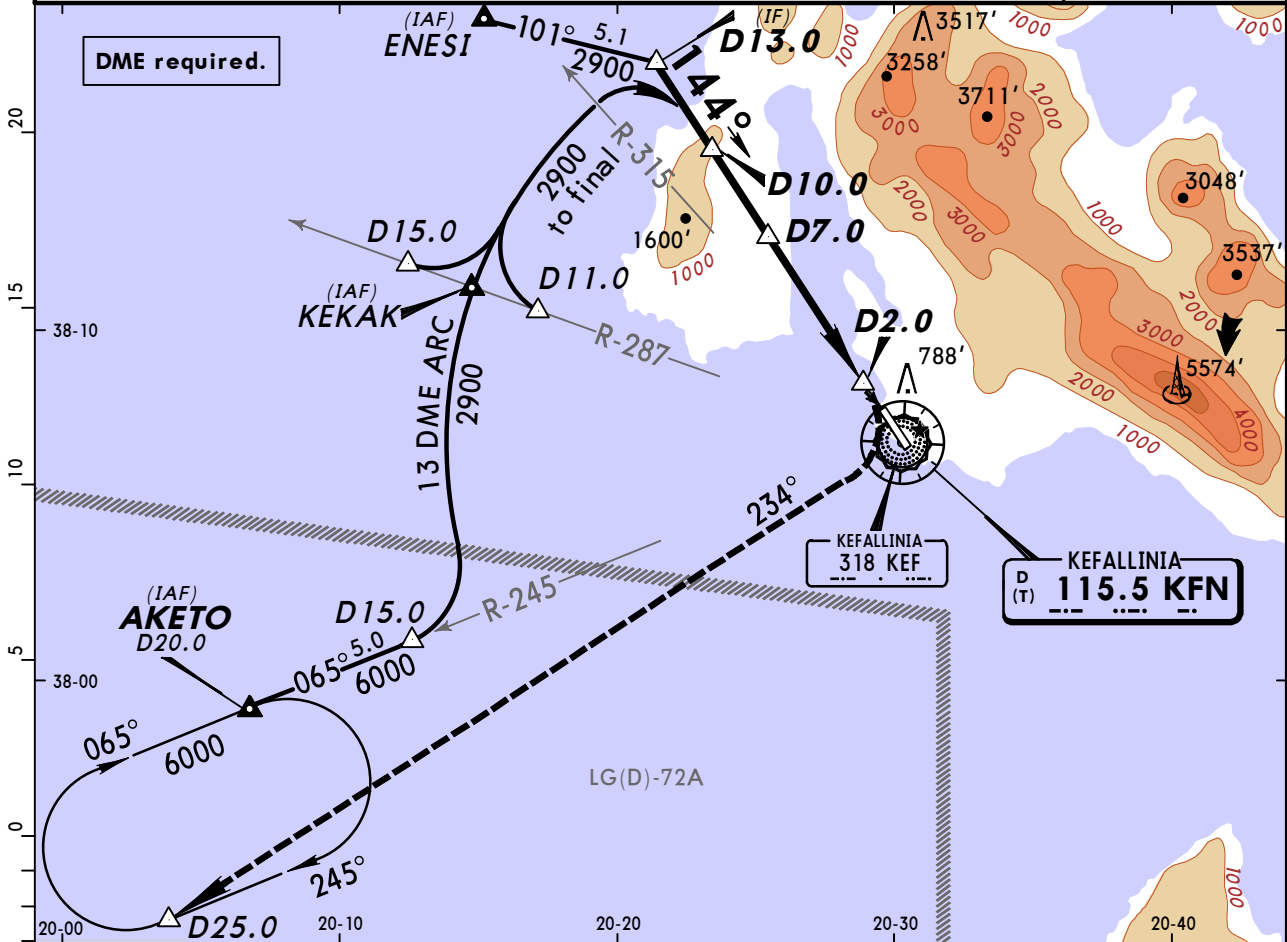
1 Operators applying U.S. Ops Specs: CL required below 300m.

LGKF/EFL  
KEFALLINIA

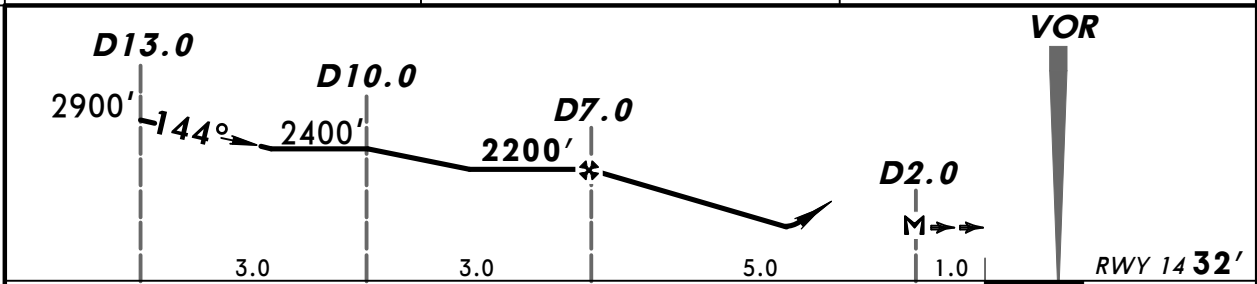
**JEPPESSEN**  
16 OCT 09 **13-1** **Eff 22 Oct**

KEFALLINIA, GREECE  
VOR Rwy 14

*ATIS 126.45				*KEFALLINIA Tower 122.25 122.1	
VOR KFN <b>115.5</b>	Final Apch Crs <b>144°</b>	Minimum Alt D7.0 <b>2200'</b> (1968')	DA(H) Refer to Minimums	Apt Elev <b>59'</b>	
<b>MISSED APCH: Turn RIGHT (MAX 185 KT) intercept and follow R-234. At D25.0 turn RIGHT and enter holding, climbing to 6000'.</b>					
Alt Set: hPa		Rwy Elev: 1 hPa	Trans level: By ATC	Trans alt: 8000'	



KFN DME	6.0	5.0
ALTITUDE	1850'	1490'



Gnd speed-Kts	70	90	100	120	140	160	REIL PAPI-L	<b>185 KT</b> MAX RT	KFN <b>115.5</b> R-234	
Descent angle	3.40°	421	541	602	722	842				963
MAP at D2.0										

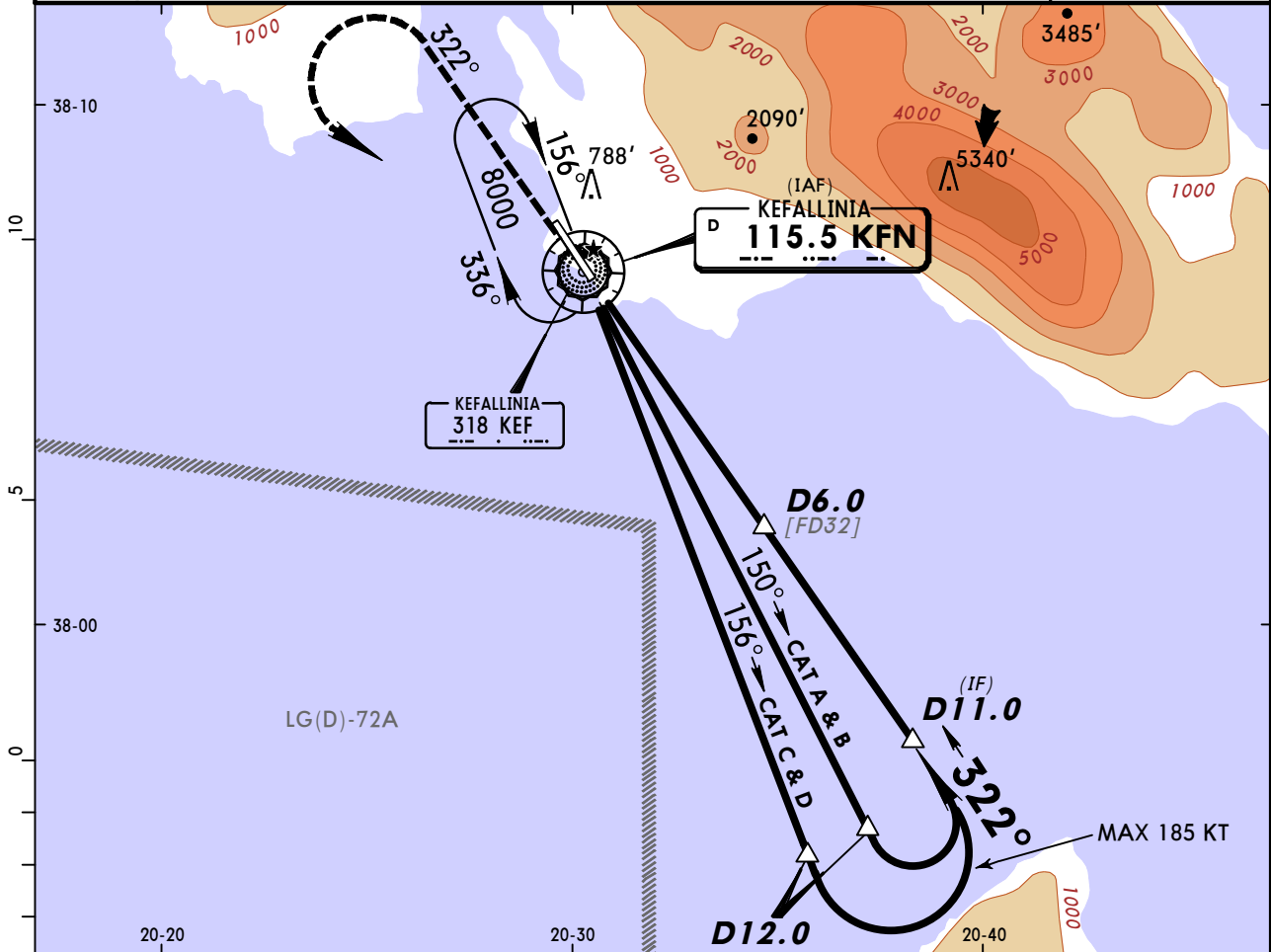
<b>PANS OPS 3</b>	<b>Standard</b> STRAIGHT-IN LANDING RWY 14		CIRCLE-TO-LAND Not authorized East of rwy		
	Missed apch climb gradient mim 2.9%	Missed apch climb gradient mim 2.5%			
	DA(H) <b>1300'</b> (1268')	DA(H) <b>1900'</b> (1868')	Max Kts	MDA(H)	VIS
	A	CMV 5000m	100	<b>1930'</b> (1871')	5000m
B		135			
C		180			
D		205			

**LGKF/EFL**  
**KEFALLINIA**

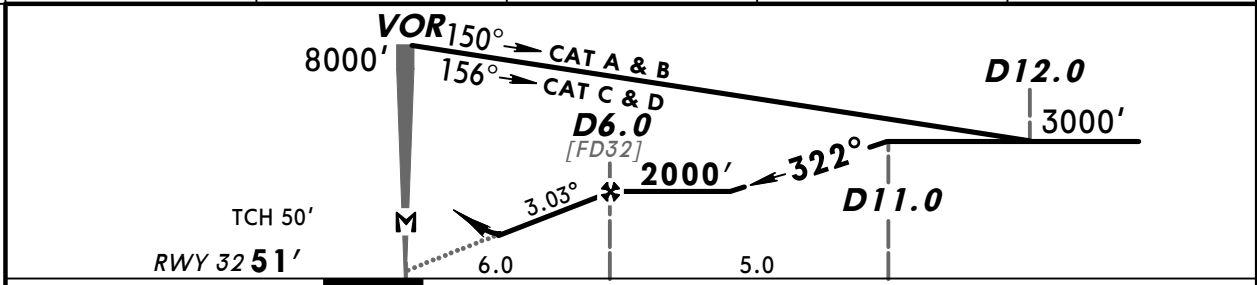
**JEPPESSEN**  
6 SEP 13 (13-2) Eff 19 Sep

**KEFALLINIA, GREECE**  
**VOR Z Rwy 32**

*ATIS <b>126.45</b>				*KEFALLINIA Tower <b>122.25 122.1</b>	
VOR KFN <b>115.5</b>	Final Apch Crs <b>322°</b>	Minimum Alt <b>D6.0</b> <b>2000' (1949')</b>	DA(H) <b>1300' (1249')</b>	Apt Elev <b>59'</b>	
<b>MISSED APCH: Climb on R-322 to 3900', then turn LEFT (MAX 185 KT) to VOR climbing to 8000' and hold.</b>					
Alt Set: hPa		Rwy Elev: 2 hPa	Trans level: By ATC	Trans alt: 8000'	
<b>DME required.</b>					MSA KFN VOR



KFN DME	2.0	3.0	4.0	5.0
ALTITUDE	720'	1040'	1360'	1680'



Gnd speed-Kts	70	90	100	120	140	160	REIL PAPI-L <b>3900'</b> ↑ on <b>115.5</b> <b>R-322</b>
Descent angle	3.03°	375	482	536	643	750	
MAP at VOR							

<b>PANS OPS</b>	<b>Standard</b>	<b>STRAIGHT-IN LANDING RWY 32</b>	<b>CIRCLE-TO-LAND</b> Not authorized East of rwy
		DA(H) <b>1300' (1249')</b>	MDA(H) _____ VIS _____
	A	CMV 5000m	Max Kts
	B		100
	C		135
D	180		
		1310' (1251')	5000m
		205	

**LGKF/EFL**  
**KEFALLINIA**



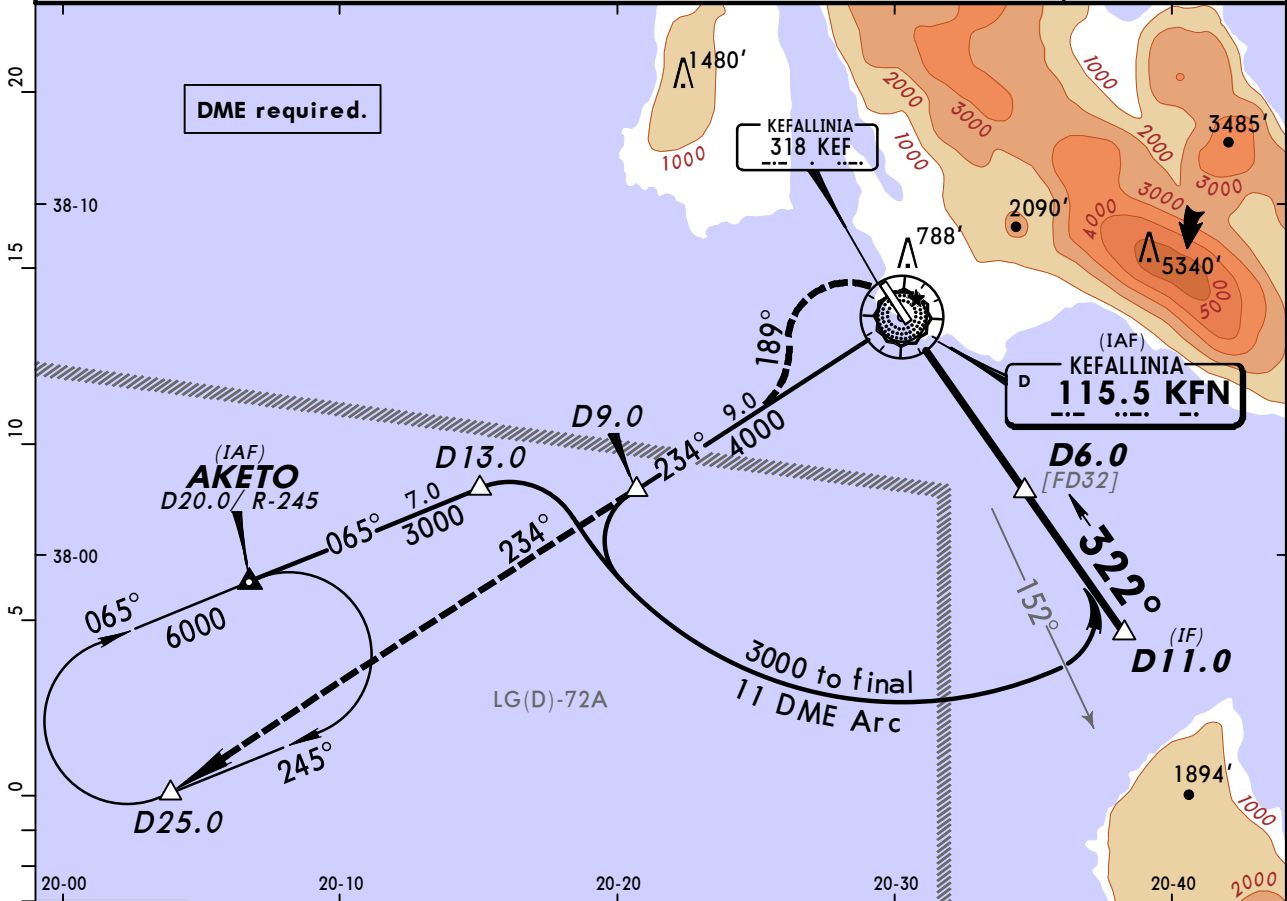
**KEFALLINIA, GREECE**  
**VOR Y Rwy 32**

6 SEP 13

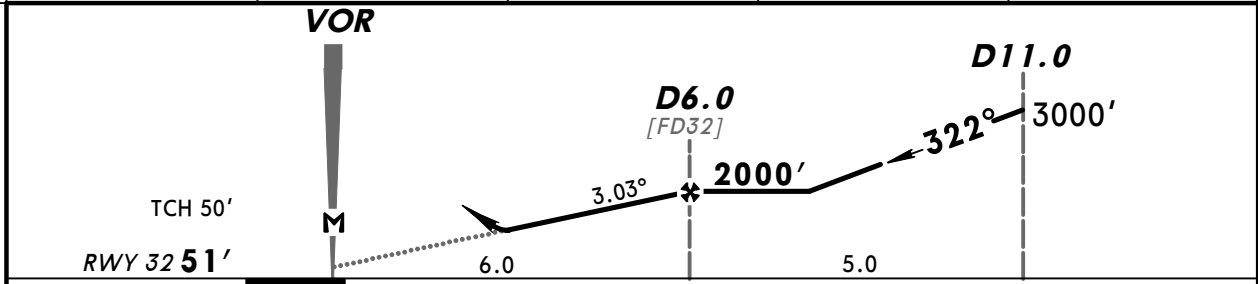
13-3

Eff 19 Sep

*ATIS <b>126.45</b>				*KEFALLINIA Tower <b>122.25 122.1</b>	
VOR KFN <b>115.5</b>	Final Apch Crs <b>322°</b>	Minimum Alt D6.0 <b>2000'</b> (1949')	DA(H) Refer to Minimums	Apt Elev <b>59'</b>	
<b>MISSED APCH: Turn LEFT (MAX 185 KT) onto track 189°, then intercept and follow R-234. At D25.0 turn RIGHT and enter holding climbing to 6000'.</b>				RWY <b>51'</b>	
Alt Set: hPa		Rwy Elev: 2 hPa		Trans level: By ATC	
				Trans alt: 8000'	
					MSA KFN VOR



KFN DME	2.0	3.0	4.0	5.0
ALTITUDE	720'	1040'	1360'	1680'



Gnd speed-Kts	70	90	100	120	140	160	REIL	<b>185 KT</b>	<b>189°</b>	KFN				
Descent angle	3.03°	375	482	536	643	750					PAPI-L	MAX	LT	<b>115.5</b>
MAP at VOR														

PANS OPS	<b>Standard</b>				<b>STRAIGHT-IN LANDING RWY 32</b>		<b>CIRCLE-TO-LAND</b> Not authorized East of rwy				
	Missed apch climb gradient mim 2.9%		Missed apch climb gradient mim 2.5%		DA(H) <b>1300'</b> (1249')		DA(H) <b>1900'</b> (1849')		Max Kts		
	CMV 5000m		CMV 5000m		100		135		MDA(H)		
	CMV 5000m		CMV 5000m		180		205		1910' (1851')		
								VIS		5000m	

CHANGES: Missed apch.

MTMA Andravida & CTR Kefallinia:

ANDRAVIDA APPROACH **121.12** (gr, en)

**LGKF**

Elev **59'**/18m

N38 07.2

E020 30.0

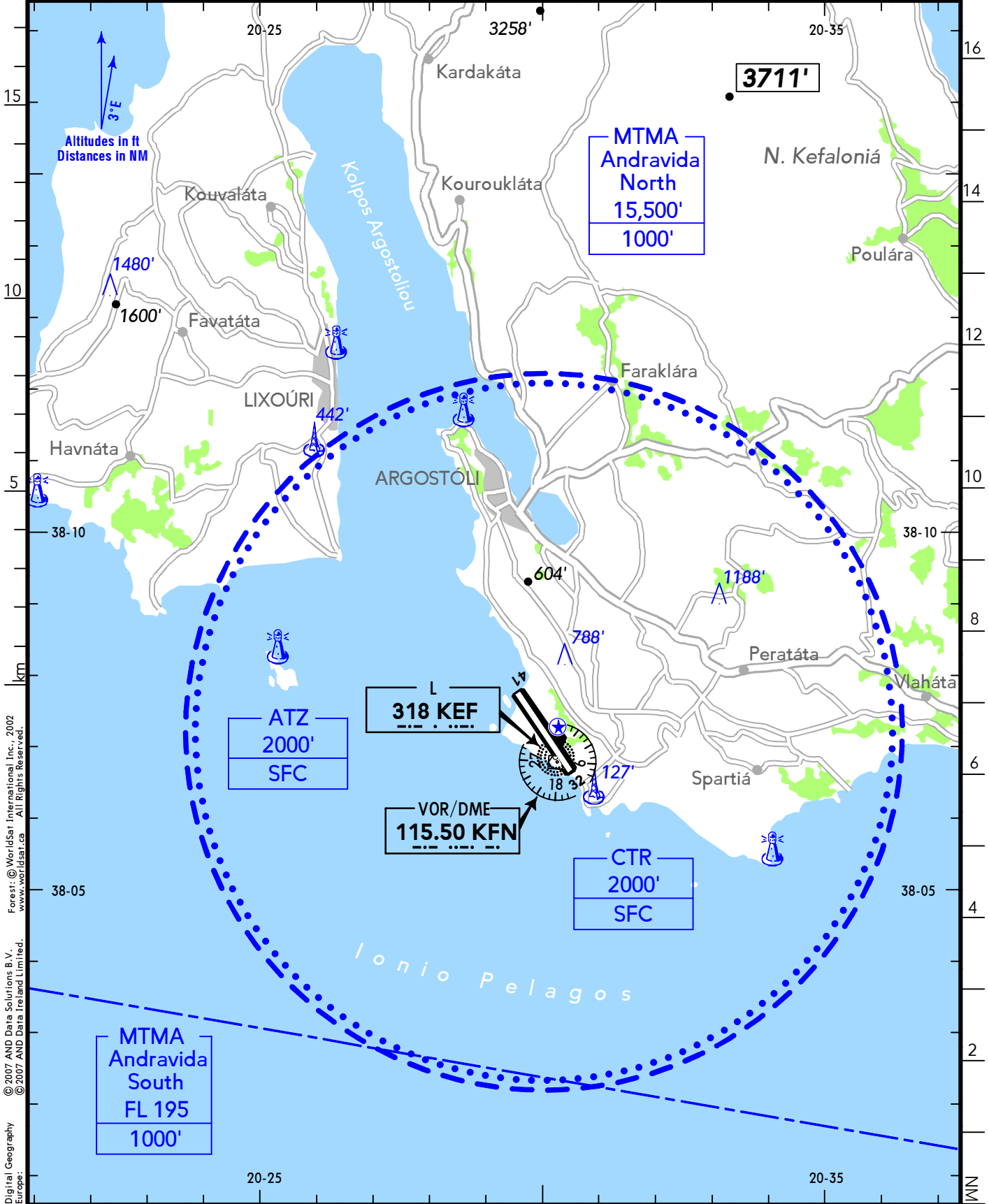
3.5 NM SSE City Harbour

(TWR) FL 40/25 NM

KEFALLINIA TOWER **122.25** (gr, en)

ATIS **126.45**

RWY	ILS	RWY	ILS



Digital Geography Europe: © 2007 AND Data Solutions B.V. © 2007 AND Data Ireland Ltd. Forest: © WorldSat International Inc., 2002 www.worldsat.ca All Rights Reserved.

# KEFALLINIA

19-2 23 NOV 12

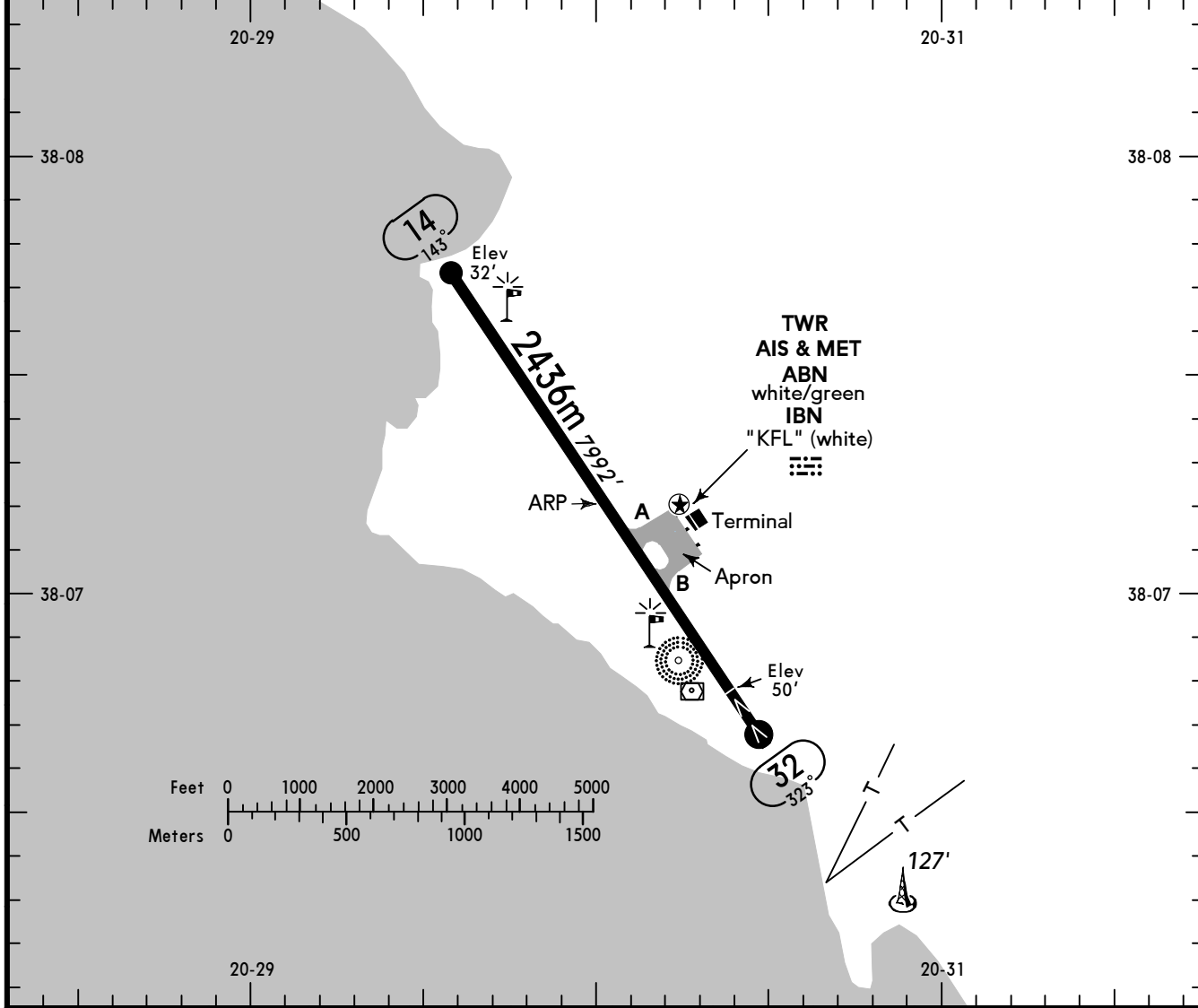


KEFALLINIA

GREECE



ATIS **126.45** (FIS) ATHINAI INFORMATION **130.92**



TAXI

ABN - IBN - PAPI 14 (3.01°), 32 - THRL - RL - TWYL - WDI - APRON - OBSTL.

RWY No	Dimension (m) - Surface	TORA (m)	LDA (m)	Strength	Lights
14	2436 x 45 Asphalt	2436	2436	PCN 50/F/C/X/T	
32		2436	2158		

**CAUTION:**  
Pilots should exercise caution when easterly winds from 050° to 130° of 15 KT or more velocity prevails, as it is certain that severe turbulence will be experienced on final approach to RWY.

Birds in vicinity of AD.

**HEL Operations**  
The HEL parking area on the apron varies depending on the AD traffic and parking availability and is specified by the AD operator.

## Chart changes since cycle 10-2019

ADD = added chart, REV = revised chart, DEL = deleted chart.

ACT	PROCEDURE IDENT	INDEX	REV DATE	EFF DATE
-----	-----------------	-------	----------	----------

**KEFALLINIA, (ANNA POLLATOU - LGKF)**

## TERMINAL CHART CHANGE NOTICES

### Chart Change Notices for Airport LGKF

**Type:** Terminal (VFR)

**Effectivity:** Permanent

**Begin Date:** Immediately

**End Date:** No end date

TEL: Apt Operator 6985053862 (mobile). Apt 2671440074, Fax 2671042110. ARO 2671440086. CAA 2671440071, Fax 2671041510.

**Type:** Terminal (VFR)

**Effectivity:** Permanent

**Begin Date:** Immediately

**End Date:** No end date

EFF 05 MAR 15 Airport Name 'Anna Pollatou' added.