

List of pages in this Trip Kit

Trip Kit Index

Airport Information For RJAN

Terminal Charts For RJAN

Revision Letter For Cycle 16-2023

Change Notices

Notebook

General Information

Location: NIIJIMA JPN
ICAO: RJAN
Lat/Long: N34° 22.17', E139° 16.12'
Elevation: 94 ft

Airport Use: Public
Daylight Savings: Not Observed
UTC Conversion: -9:00 = UTC
Magnetic Variation: 7.0° W

Fuel Types: Jet A-1
Customs: Yes
Airport Type: IFR
Landing Fee: Yes
Control Tower: No
Jet Start Unit: No
LLWS Alert: No
Beacon: No

Sunrise: 2115 Z
Sunset: 0740 Z

Runway Information

Runway: 11
Length x Width: 2625 ft x 82 ft
Surface Type: asphalt
TDZ-Elev: 89 ft
Lighting: REIL
Stopway: 131 ft

Runway: 29
Length x Width: 2625 ft x 82 ft
Surface Type: asphalt
TDZ-Elev: 92 ft
Lighting: REIL
Stopway: 131 ft

Communication Information

Tokyo Approach: 119.100
Izu (Niijima) Radio: 124.300 AFIS Remote Communications Air-Ground
Tokyo Radar: 124.000

RJAN
NIIJIMA

JEPPESEN

NIIJIMA, JAPAN

12 JUL 19

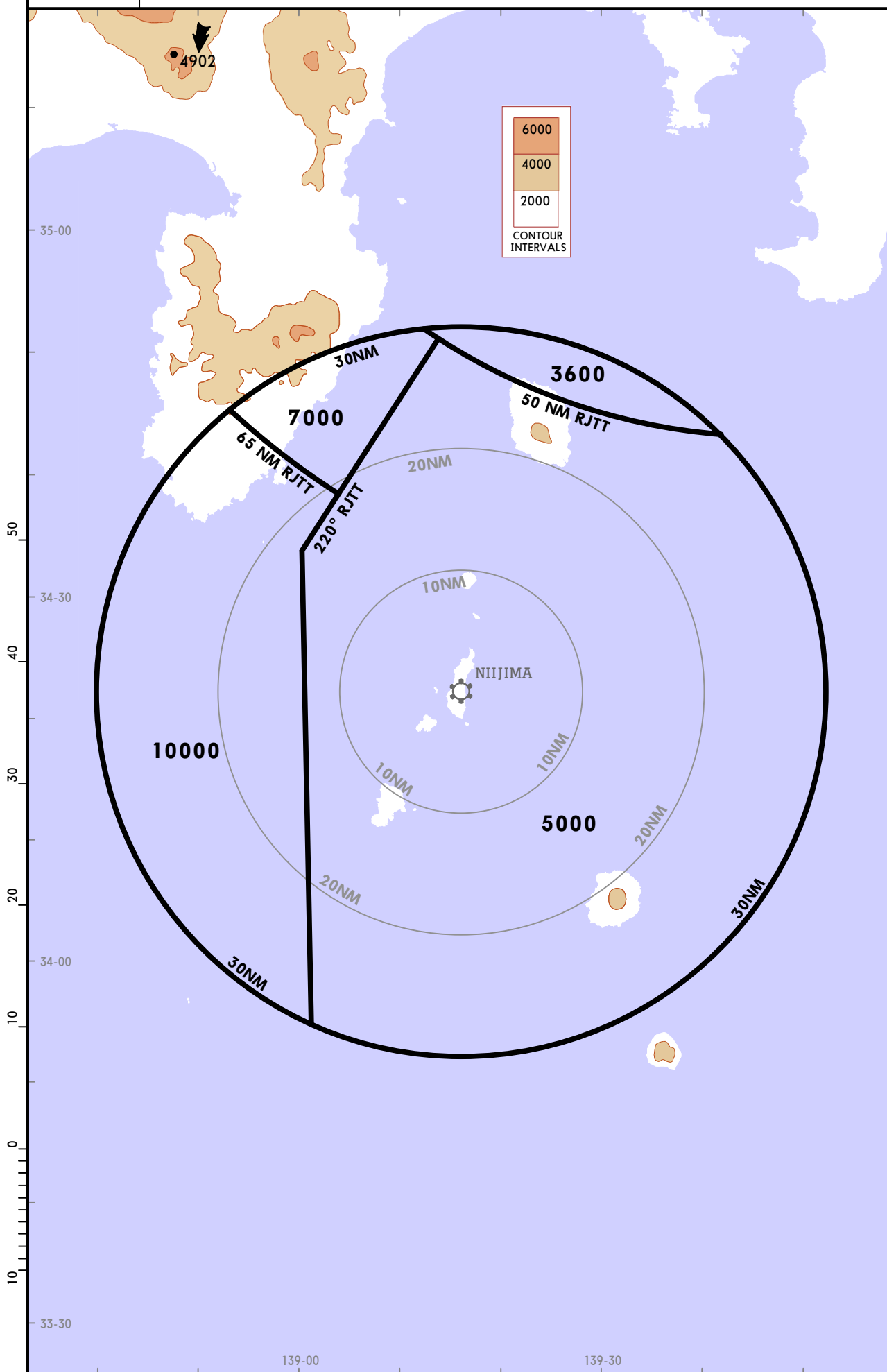
10-1R

Eff 17 Jul 1500Z

RADAR MINIMUM ALTITUDES

Apt Elev
94

Alt Set: IN (hPa on req)
Trans level: FL140 Trans alt: 14000



RJAN
NIIJIMA

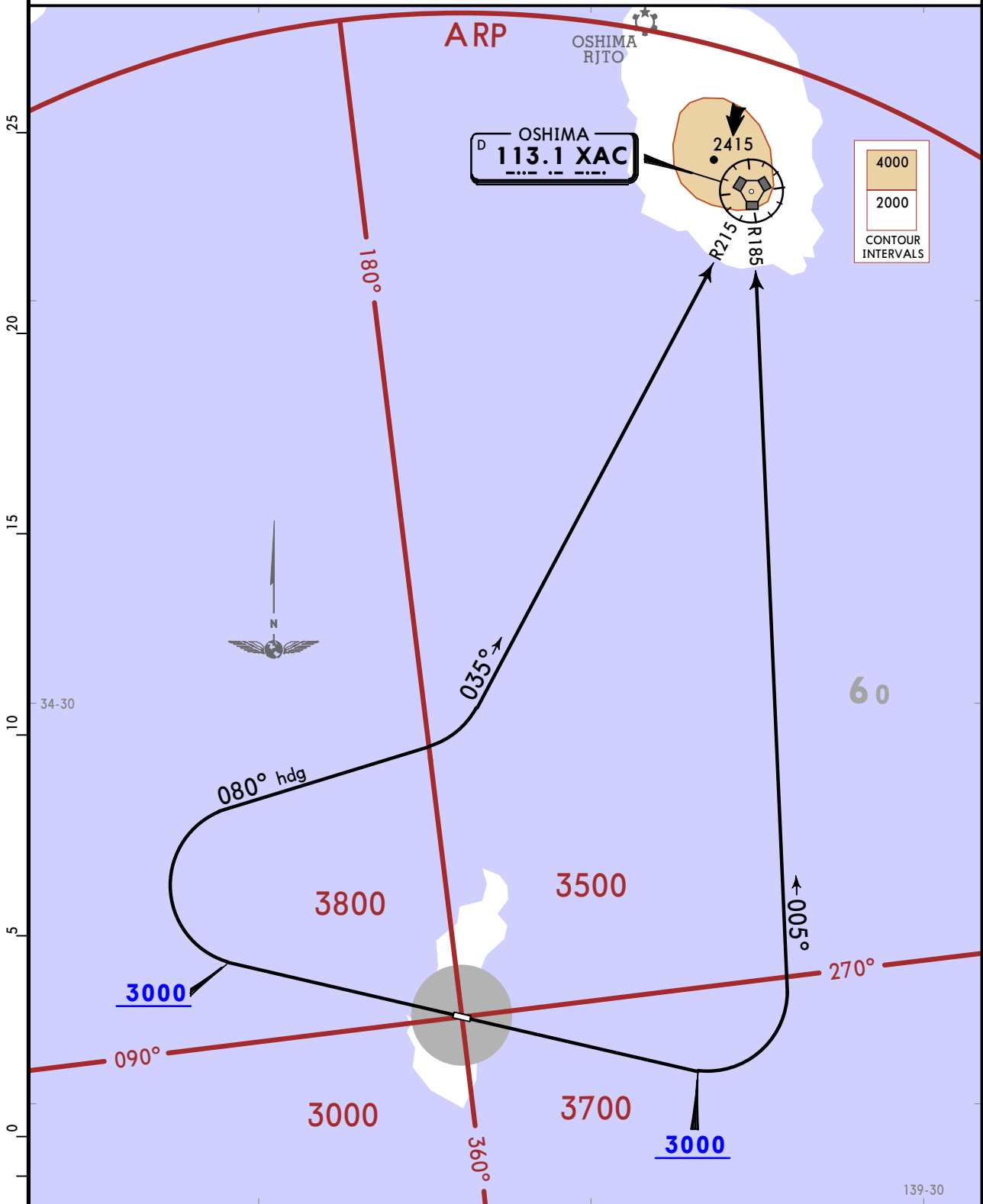
JEPPESEN
1 JUN 18 10-3

NIIJIMA, JAPAN

SID

Apt Elev 94	Trans alt: 14000
----------------	------------------

OSHIMA 1 DEPARTURE [XAC1]



5.0% climb gradient required up to 3000 due to airspace restrictions only.

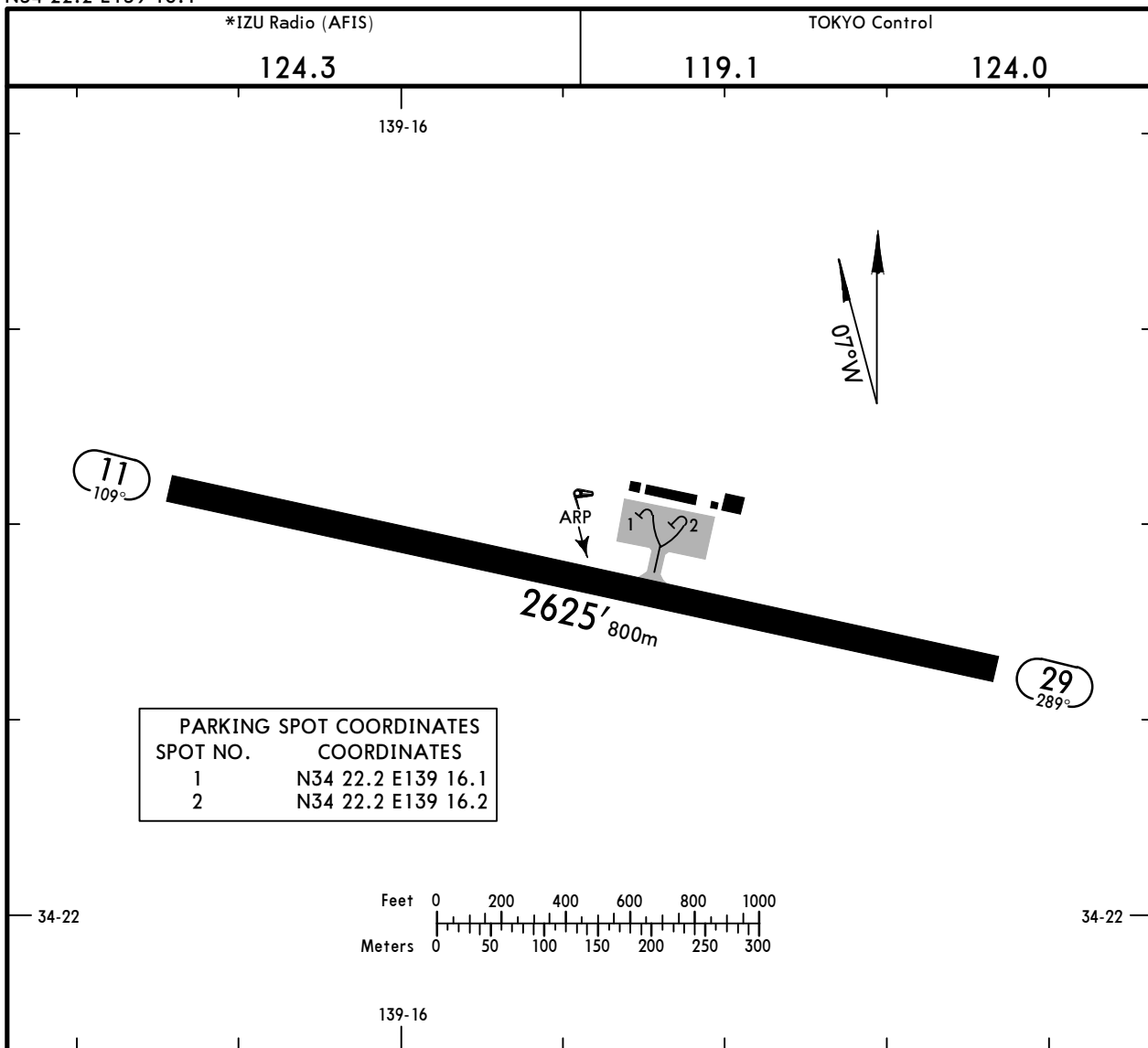
Gnd speed-KT	75	100	150	200	250	300
5.0% V/V (fpm)	380	506	760	1013	1266	1519

RWY	INITIAL CLIMB
11	Climb runway heading to 3000, turn LEFT, via XAC R185 to XAC VOR.
29	Climb runway heading to 3000, turn RIGHT heading 080° to intercept and proceed via XAC R215 to XAC VOR.

RJAN
 Apt Elev **94'**
 N34 22.2 E139 16.1

JEPPESEN
 1 OCT 21 **(10-9)**

NIIJIMA, JAPAN
NIIJIMA



PARKING SPOT COORDINATES	
SPOT NO.	COORDINATES
1	N34 22.2 E139 16.1
2	N34 22.2 E139 16.2

ADDITIONAL RUNWAY INFORMATION					
RWY	REIL	PAPI-L (angle 4.0°)	USABLE LENGTHS		WIDTH
			Threshold	Glide Slope	
11 29					82' 25m

TAKE-OFF			
Rwy 11			
Take-off Altn Apt. Filed			Other
RCLM		NIL (DAY ONLY)	
1 & 2 Eng	400m	500m	Available Landing Minimums
3 & 4 Eng			

TAKE-OFF			
Rwy 29			
Take-off Altn Apt. Filed			Other
RCLM		NIL (DAY ONLY)	
1 & 2 Eng	400' - 2400m	400' - 2400m	Available Landing Minimums
3 & 4 Eng			

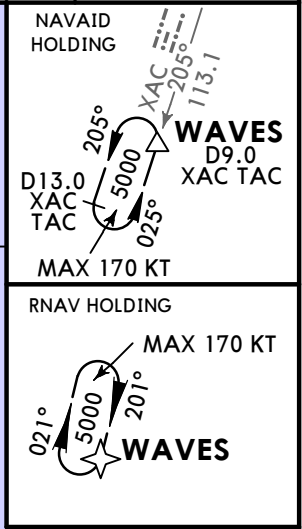
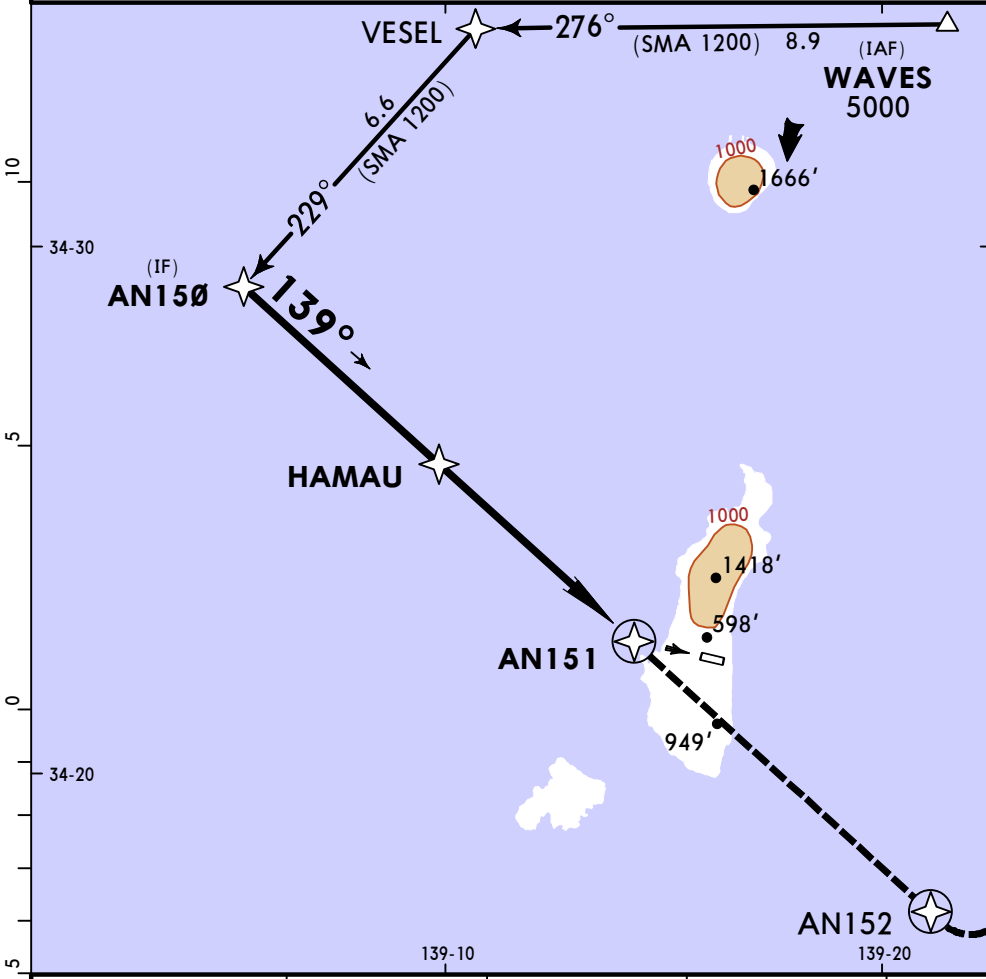
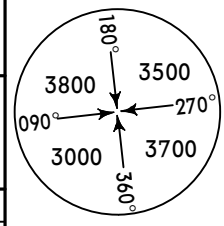
RJAN
NIIJIMA

30 SEP 22
Eff 5 Oct 1500Z (12-1)

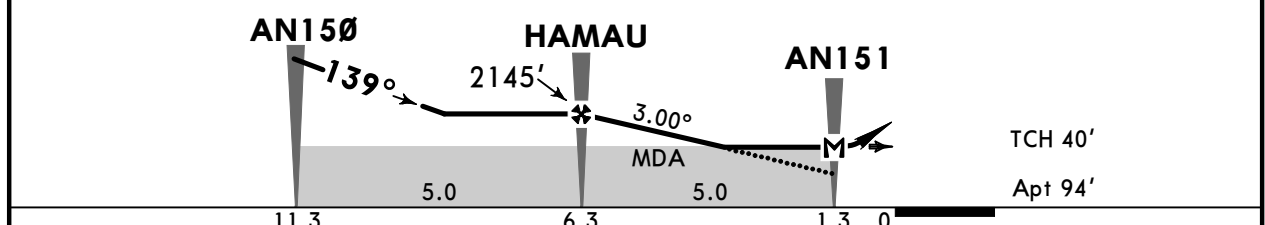
Missed Apch Climb Gradient MIN 5.0%
CAT A & B

NIIJIMA, JAPAN
RNP Rwy 11

119.1		TOKYO Control		124.0		*IZU Radio (AFIS)		124.3	
RNAV	Final Apch Crs	Refer to Profile	MDA(H)	Apt Elev 94'		Rwy 89'			
139°			1000' (906')						
MISSED APCH: Climb direct to AN152, turn LEFT, direct to WAVES and hold at 5000'. Contact IZU Radio. Missed Apch climb gradient MIN 5.0%.									
Alt Set: IN (hPa on req)			Trans level: FL140			Trans alt: 14000'			
RNP Apch									
1. Baro-VNAV not authorized. 2. PAPI and descent angles not coincident. 3. Final approach course offset 30°.									



DIST to AN151	FAF	4.0	3.0	2.0	MAP
ALTITUDE	2145'	1827'	1508'	1189'	



Gnd speed-Kts	70	90	100	120	140	160	REIL PAPI-L			↑	→	AN152
Descent Angle 3.00°	372	478	531	637	743	849						
MAP at AN151												

<input checked="" type="checkbox"/> STRAIGHT-IN LANDING RWY11 LNAV/VNAV		<input checked="" type="checkbox"/> CIRCLE-TO-LAND Not Authorized North of Runway	
MDA(H) 1000' (906')		MDA(H) _____	
CMV 1500m		Max Kts _____ 90 120 1380' (1286') - 1600m	
NOT APPLICABLE		NOT APPLICABLE	
NOT APPLICABLE		NOT APPLICABLE	

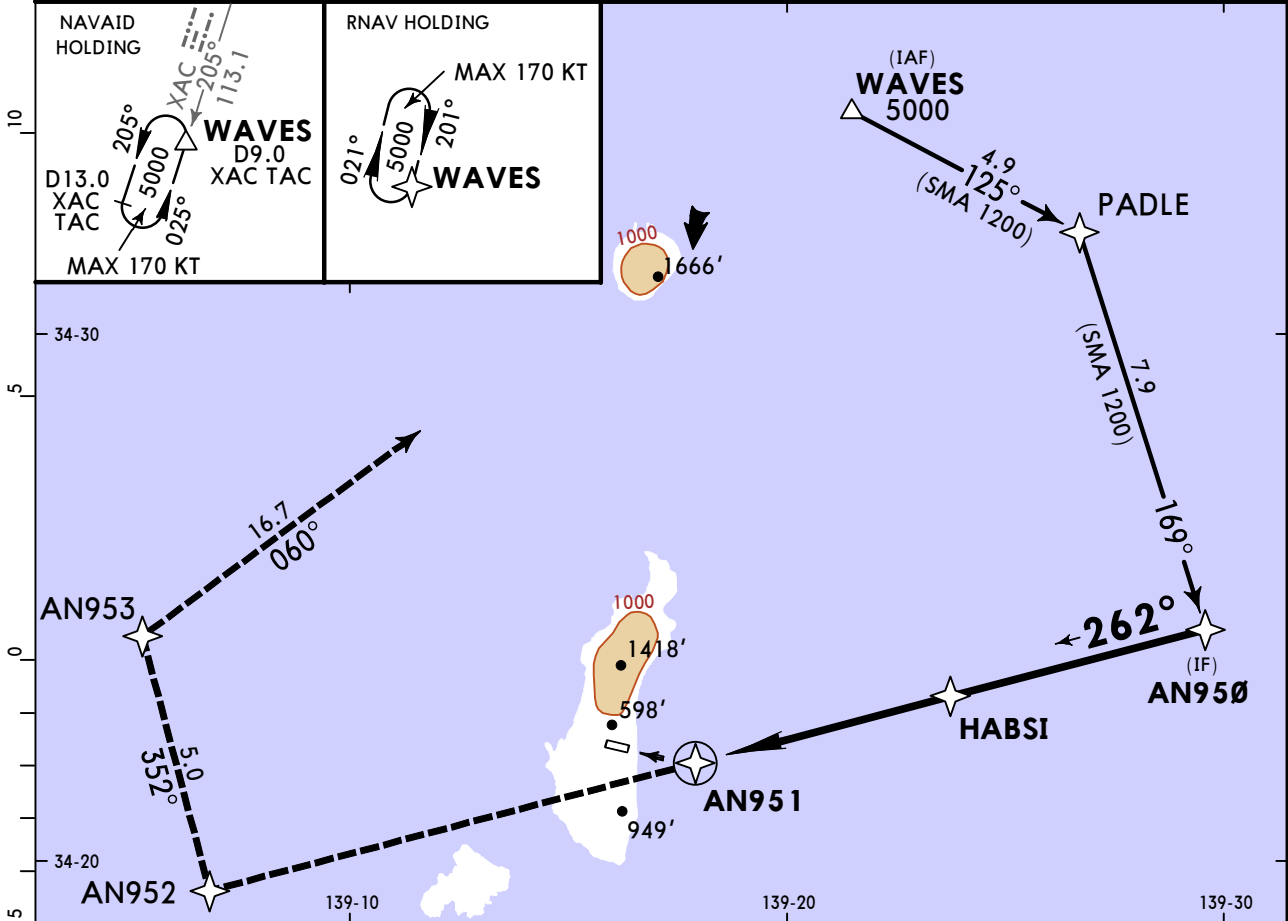
RJAN
NIIJIMA

30 SEP 22
Eff 5 Oct 1500Z (12-2)

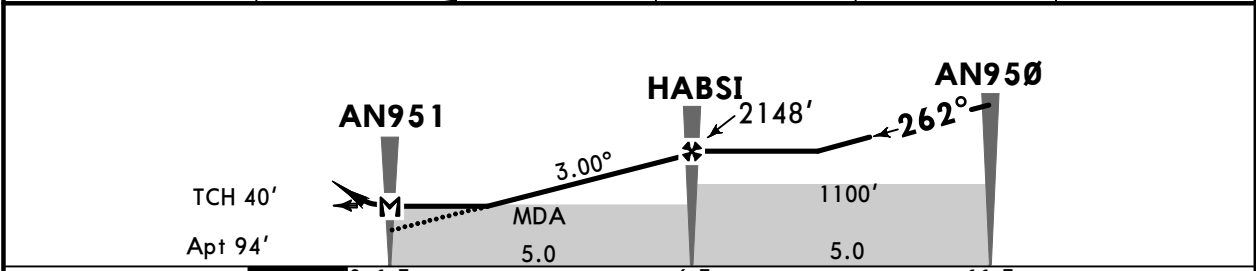
Missed Apch Climb Gradient MIN 5.0%
NIIJIMA, JAPAN
RNP Rwy 29

CAT A & B

119.1		TOKYO Control		124.0		*IZU Radio (AFIS)		124.3		
RNAV	Final Apch Crs 262°	Refer to Profile	MDA(H) Refer to Minimums	Apt Elev 94'		Rwy 92'		<p>MSA ARP</p>		
MISSED APCH: Climb direct to AN952, to AN953, to WAVES and hold at 5000'. Contact IZU Radio. Missed Apch climb gradient MIN 5.0%.										
Alt Set: IN (hPa on req)			Trans level: FL140			Trans alt: 14000'				
RNP Apch										
1. Baro-VNAV not authorized. 2. PAPI and descent angles not coincident. 3. Final approach course offset 27°.										



DIST to AN951	MAP	2.0	3.0	4.0	FAF
ALTITUDE		1193'	1511'	1830'	2148'



Gnd speed-Kts	70	90	100	120	140	160	REIL PAPI-L		AN952	
Descent Angle	3.00°	372	478	531	637	743				849
MAP at AN951										

STRAIGHT-IN LANDING RWY29			CIRCLE-TO-LAND Not Authorized North of Runway		
LNAV/VNAV		LNAV MDA(H) A: 960' (866') B: 1010' (916')	Max Kts		MDA(H)
A	NOT APPLICABLE	CMV 1500m	90	1380' (1286') - 1600m	
B			120		
C			NOT APPLICABLE		
D			NOT APPLICABLE		

Chart changes since cycle 15-2023

ADD = added chart, REV = revised chart, DEL = deleted chart.

ACT	PROCEDURE IDENT	INDEX	REV DATE	EFF DATE
NIIJIMA, (NIIJIMA - RJAN)				

TERMINAL CHART CHANGE NOTICES

No Chart Change Notices for Airport RJAN