

## List of pages in this Trip Kit

Trip Kit Index

Airport Information For RJBT

Terminal Charts For RJBT

Revision Letter For Cycle 16-2023

Change Notices

Notebook

## General Information

Location: TAJIMA JPN  
ICAO/IATA: RJBT / TJH  
Lat/Long: N35° 30.77', E134° 47.22'  
Elevation: 578 ft

Airport Use: Public  
Daylight Savings: Not Observed  
UTC Conversion: -9:00 = UTC  
Magnetic Variation: 8.0° W

Fuel Types: 100 Octane (LL), Jet A-1  
Customs: Yes  
Airport Type: IFR  
Landing Fee: Yes  
Control Tower: No  
Jet Start Unit: No  
LLWS Alert: No  
Beacon: Yes

Sunrise: 2135 Z  
Sunset: 0756 Z

## Runway Information

Runway: 01  
Length x Width: 3937 ft x 98 ft  
Surface Type: asphalt  
TDZ-Elev: 584 ft  
Lighting: Edge, ALS, REIL, Part time, Pilot controlled  
Stopway: 197 ft

Runway: 19  
Length x Width: 3937 ft x 98 ft  
Surface Type: asphalt  
TDZ-Elev: 573 ft  
Lighting: Edge, ALS, REIL, Part time, Pilot controlled  
Stopway: 197 ft

## Communication Information

Tajima Flight Service Information: 130.800 AFIS Air-Ground  
Tokyo Control ACC: 133.800 RCO  
Tajima Radio: 118.400 AFIS RCO  
Tokyo Control ACC: 124.950 Secondary RCO

RJBT/TJH  
TAJIMA

JEPPESEN

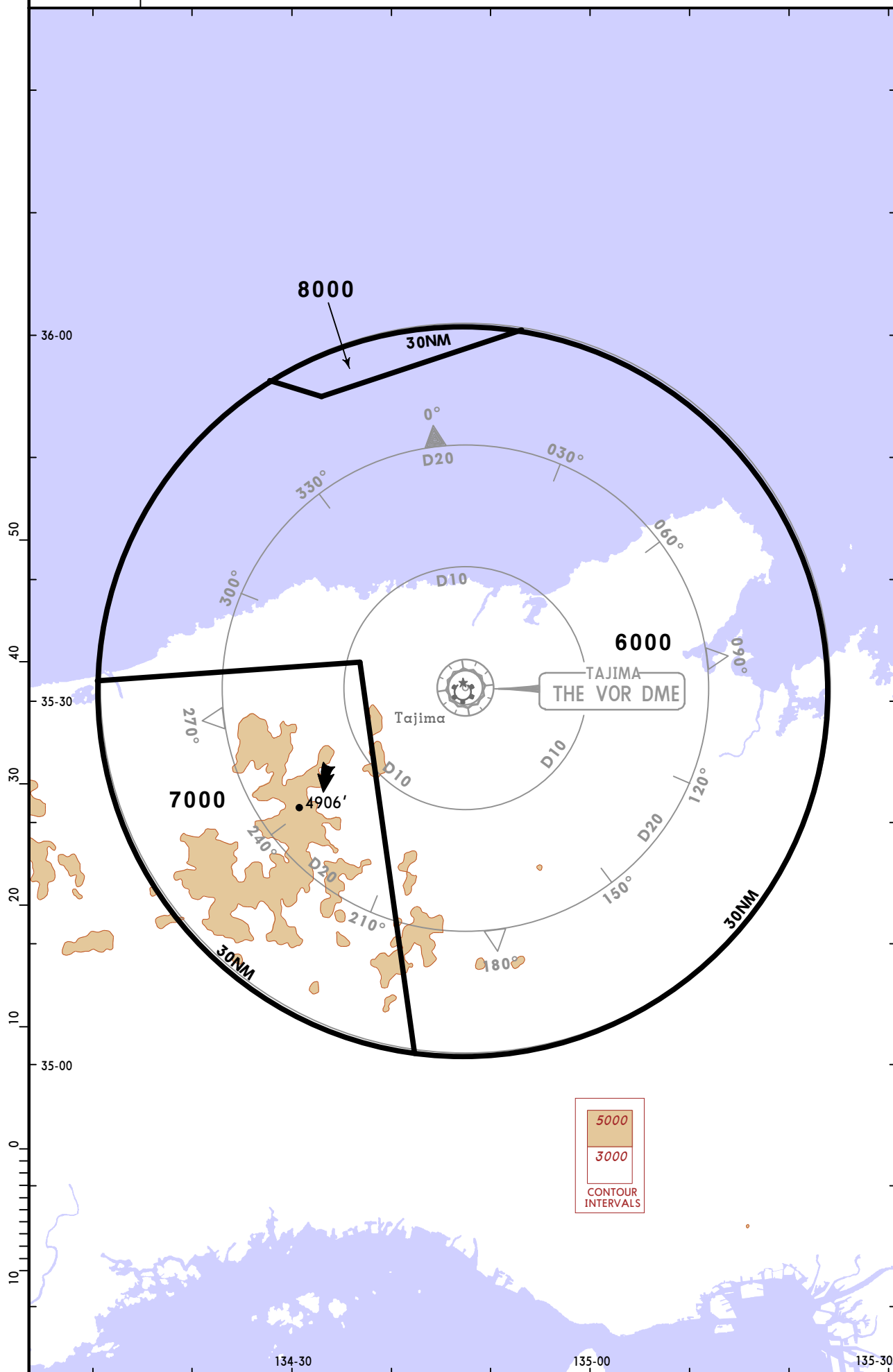
TAJIMA, JAPAN

5 DEC 14 (10-1R)

RADAR MINIMUM ALTITUDES

Apt Elev  
578'

Alt Set: IN (hPa on req)  
Trans level: FL140 Trans alt: 14000'



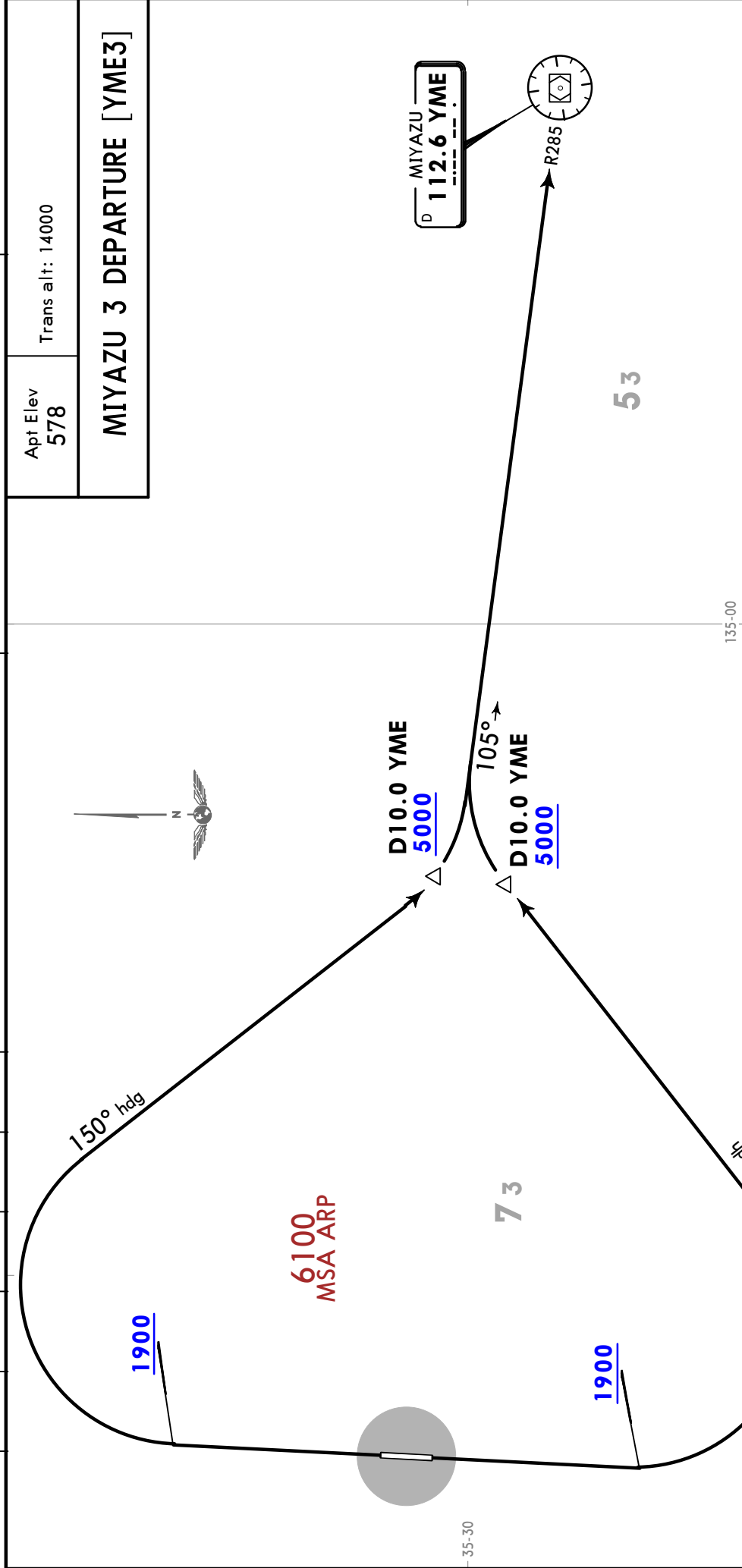
CHANGES: New chart.

© JEPPESEN, 2014. ALL RIGHTS RESERVED.

RJBT/TJH  
TAJIMA

**JEPPESEN**  
19 MAR 21 **10-3** Eff 24 Mar 1500Z

**TAJIMA, JAPAN**  
**SID**



Apt Elev  
578

Trans alt: 14000

**MIYAZU 3 DEPARTURE [YME3]**

**OBSTACLES**

Rwy 01: 1956 located at 5.6 NM 007° from end of RWY 01.  
 Rwy 19: 2888 located at 8.3 NM 144° from end of RWY 19.  
 Rwy 01: 5.0% climb gradient required up to 2200.  
 Rwy 19: 5.0% climb gradient required up to 3200.

Gnd speed-KT	75	100	150	200	250	300
5.0% V/V (fpm)	380	506	760	1013	1266	1519

RWY	INITIAL CLIMB
01	Climb runway heading to 1900, turn RIGHT heading 150°.
19	Climb runway heading to 1900, turn LEFT heading 060°.

**ROUTING**

Intercept and proceed via YME R285 to YME VOR. Cross D10.0 YME at or above 5000.

CHANGES: MSA, procedure renumbered, VOR THE removed.

RJBT/TJH  
TAJIMA

JEPPESEN

TAJIMA, JAPAN

19 MAR 21

10-3A

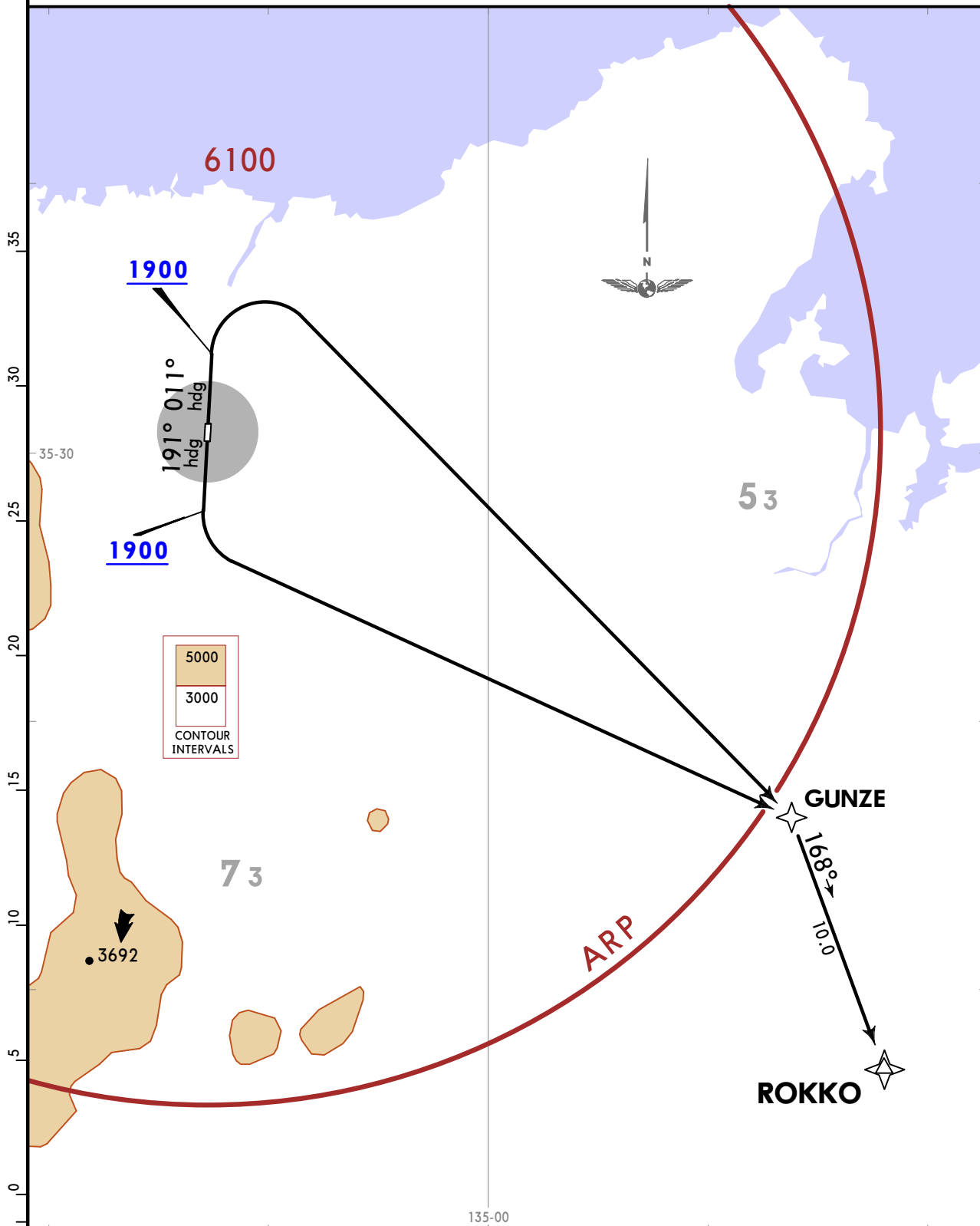
Eff 24 Mar 1500Z

RNAV SID

Apt Elev  
578

Trans alt: 14000  
1. Basic RNP1. 2. GNSS required.

ROKKO 1 DEPARTURE [ROKKO1]



Rwy 01: 5.0% climb gradient required up to 2200.  
Rwy 19: 5.0% climb gradient required up to 3200.

OBSTACLES

Rwy 01: 1956 located at 5.6 NM 007° from end of RWY 01.

Rwy 19: 2854 located at 8.2 NM 144° from end of RWY 19.

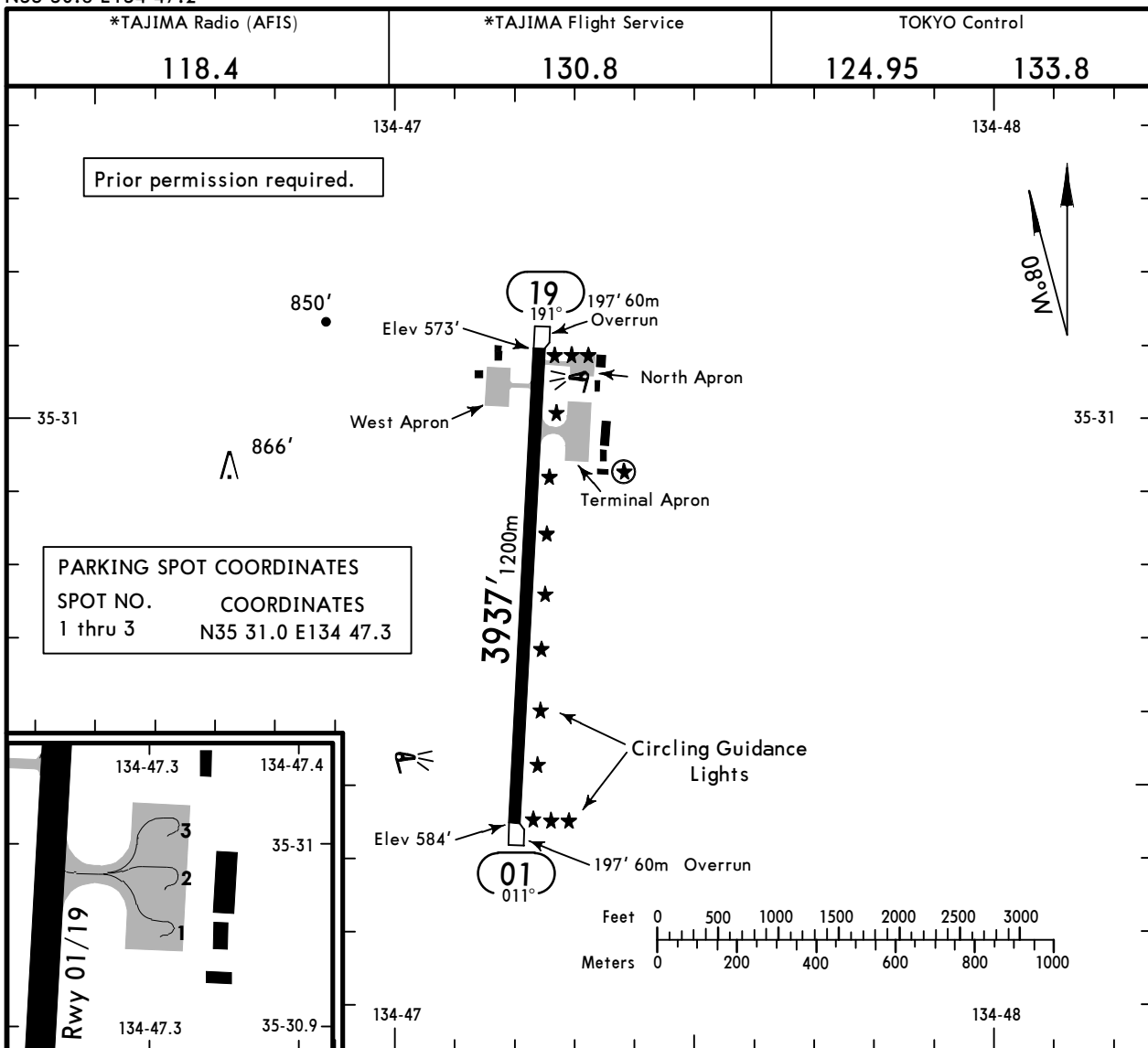
Gnd speed-KT	75	100	150	200	250	300
5.0% V/V (fpm)	380	506	760	1013	1266	1519

RWY	INITIAL CLIMB
01	Climb on heading 011° at or above 1900, turn RIGHT direct to GUNZE, to ROKKO.
19	Climb on heading 191° at or above 1900, turn LEFT direct to GUNZE, to ROKKO.

**RJBT/TJH**  
 Apt Elev **578'**  
 N35 30.8 E134 47.2

**JEPPESSEN**  
 1 OCT 21 **(10-9)**

**TAJIMA, JAPAN**  
**TAJIMA**



**ADDITIONAL RUNWAY INFORMATION**

RWY	SURFACE	USABLE LENGTHS	LANDING BEYOND		TAKE-OFF	WIDTH
			Threshold	Glide Slope		
01	HIRL REIL PAPI-L (angle 3.0°)					98'
19	Circling Guidance Lights	grooved				30m

**TAKE-OFF**

	Rwy 01				Rwy 19			
	Multi Eng Acft			Single Eng Acft	Multi Eng Acft			Single Eng Acft
	With Take-off Altn Apt. Filed		Without Take-off Altn Apt. Filed		With Take-off Altn Apt. Filed		Without Take-off Altn Apt. Filed	
	<b>I</b> HIRL or CL or RCLM	NIL (DAY ONLY)			<b>I</b> HIRL or CL or RCLM	NIL (DAY ONLY)		
A	VIS 400m	VIS 500m	Available Landing Minimums	Available Landing Minimums	VIS 400m	VIS 500m	Available Landing Minimums	Available Landing Minimums
B								
C								
D	NOT APPLICABLE							

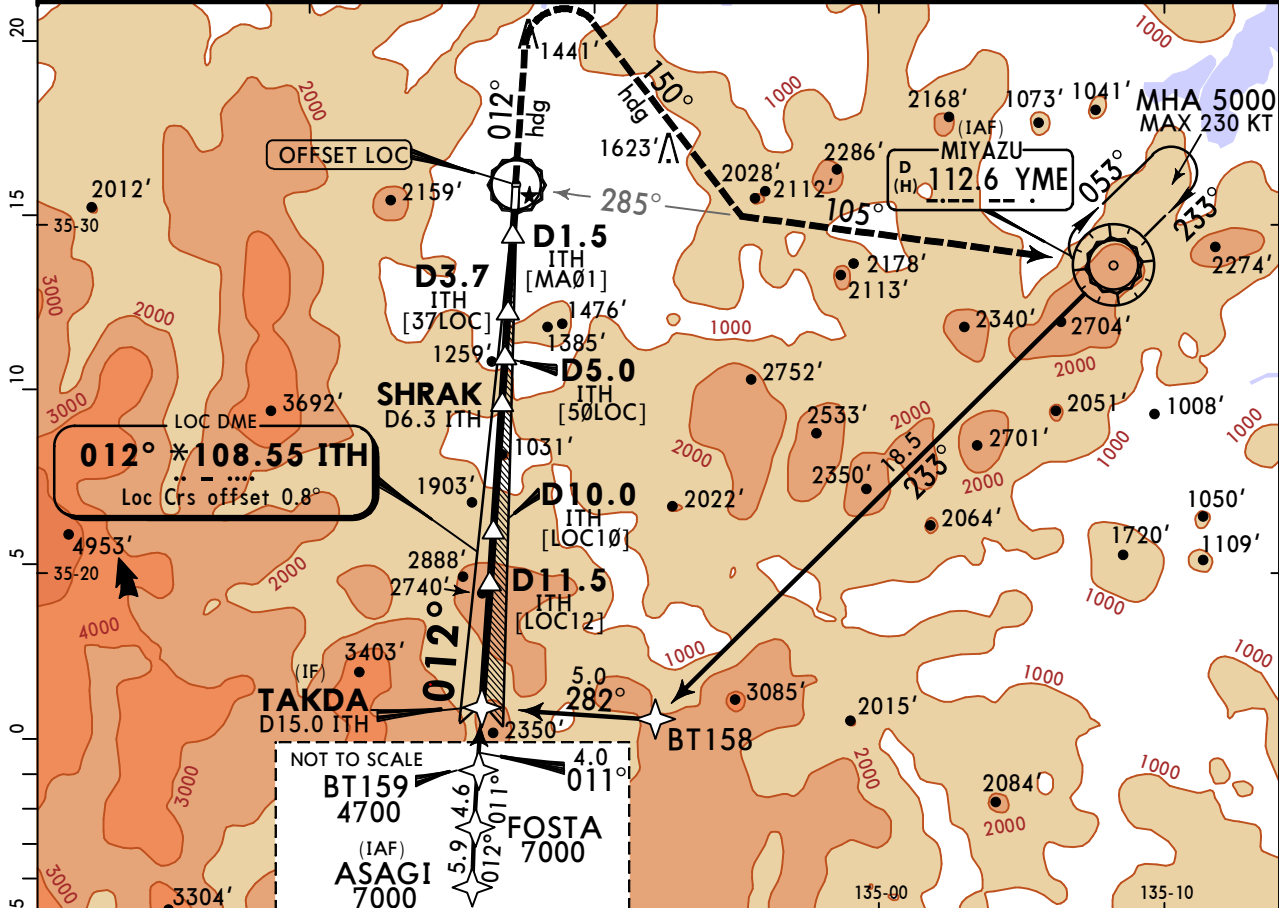
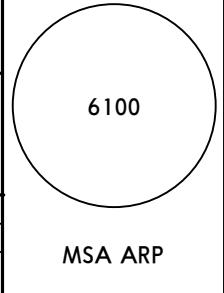
**I** HIRL and Runway Threshold Lights (which indicates DER) required for night operations.

RJBT/TJH  
TAJIMA

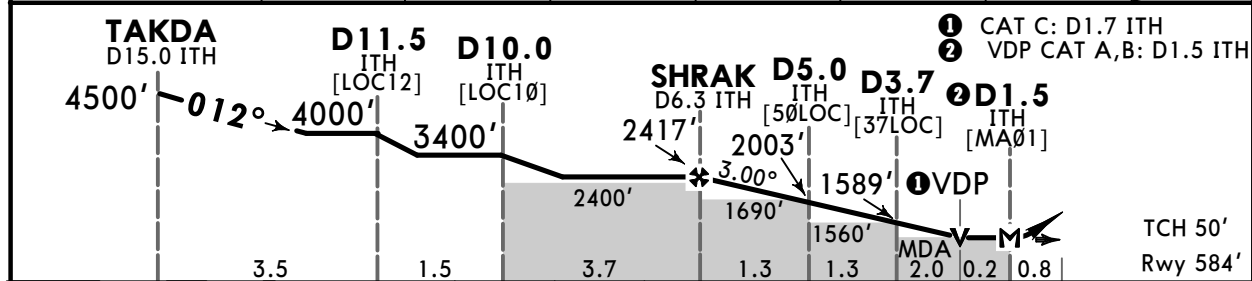
JEPPESSEN  
1 OCT 21 (11-1)

MISSED APCH CLIMB GRADIENT MIM 5.0% TAJIMA, JAPAN  
CAT A, B & C  
LOC Rwy 01

TOKYO Control 124.95 133.8			*TAJIMA Radio (AFIS) 118.4		
LOC ITH *108.55	Final Apch Crs 012°	Minimum Alt Refer to Profile	MDA(H) Refer to Minimums	Apt Elev 578' Rwy 584'	
<b>MISSED APCH: Climb on heading 012° to 2200', turn RIGHT heading 150° to intercept and proceed via YME VOR R-285 to YME VOR DME and hold at 5000'. Contact Tajima RADIO.</b> Missed approach requires a minimum climb gradient of 5.0%					
Alt Set: IN (hPa on req)		Trans level: FL 140		Trans alt: 14000'	
Basic RNP 1 Required for initial approach segment					
1. GNSS Required for initial approach segment. 2. VOR DME required. 3. Timing not authorized for defining the MAP.					



NM to ITH	FAF	6.0	5.0	4.0	3.0	2.0	MAP
ALT (3.0° APCH Path)	2417'	2321'	2003'	1685'	1366'	1048'	



Gnd speed-Kts	70	90	100	120	140	160	
Descent Angle	3.00°	372	478	531	637	743	849
MAP at D1.5 ITH							

<b>1 STRAIGHT-IN LANDING RWY 01</b> CAT A, B: MDA(H) <b>860'</b> (282') CAT C: MDA(H) <b>920'</b> (342')			<b>1 CIRCLE-TO-LAND</b> Not Authorized West of Rwy		
A		Max Kts	90	MDA(H) <b>1020'</b> (442') - 1600m	
B	CMV 1500m	120		<b>1030'</b> (452') - 1600m	
C	CMV 1800m	140		<b>1030'</b> (452') - 2400m	
D	NOT APPLICABLE	D		NOT APPLICABLE	

1 Minima with Missed Apch Climb Gradient of 2.5% are not established.  
 CHANGES: Communications. © JEPPESSEN, 2016, 2021. ALL RIGHTS RESERVED.

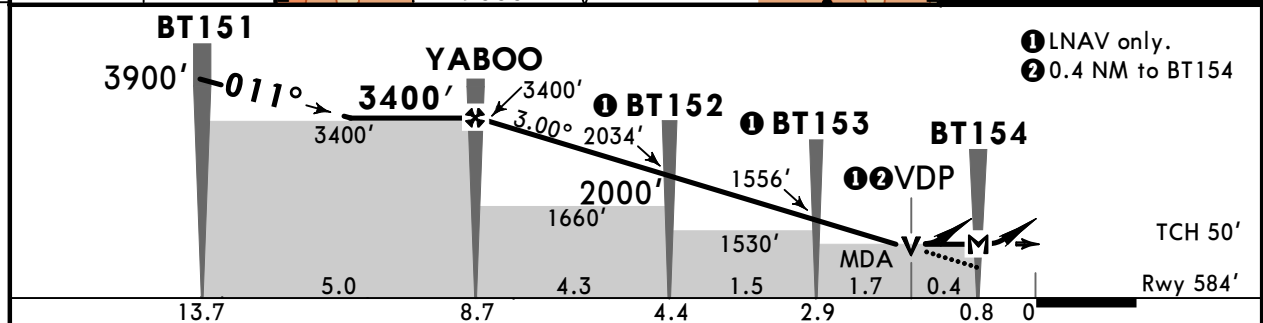
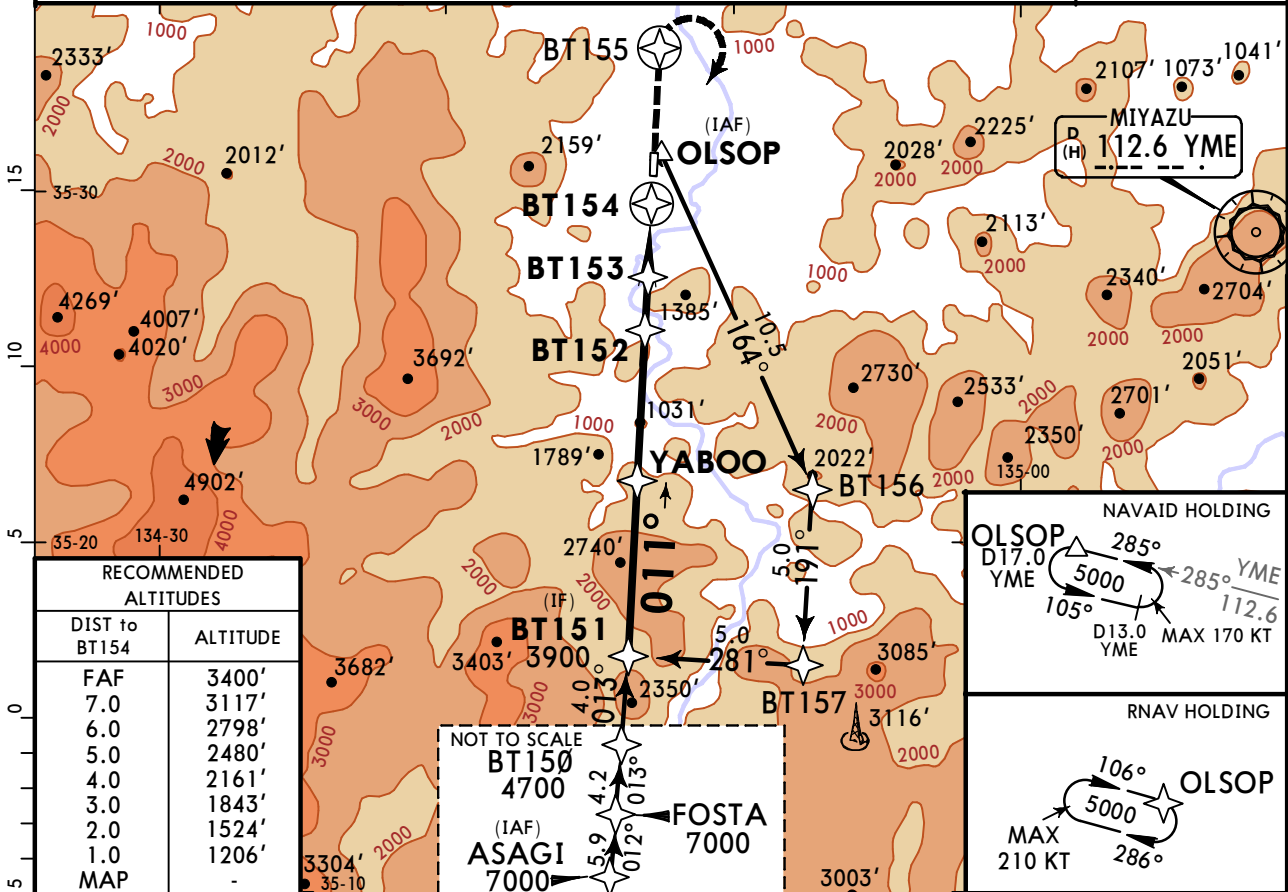
RJBT/TJH  
TAJIMA

**JEPPESSEN**  
30 SEP 22  
Eff 5 Oct 1500Z (12-1)

Missed Apch Climb  
Gradient Min 5.0%

**TAJIMA, JAPAN**  
CAT A & B RNP Rwy 01

TOKYO Control 124.95 133.8			*TAJIMA Radio (AFIS) 118.4		
RNAV	Final Apch Crs <b>011°</b>	Refer to Profile	LNAV/VNAV DA(H) <b>990'</b> (406')	Apt Elev 578' Rwy 584'	6100  MSA ARP
<b>MISSED APCH: Direct to BT155, then turn RIGHT direct to OLSOP and hold at 5000'. Contact TAJIMA Radio.</b> Missed approach climb gradient minimum 5.0%.					
RNP Apch	Alt Set: IN (hPa on req)	Trans level: FL140	Trans alt: 14000'		
Baro-VNAV not authorized below -10°C.					



Gnd speed-Kts	70	90	100	120	140	160	REIL PAPI-L	BT155	RT	D	OLSOP 5000'
Glide Path Angle	3.00°	372	478	531	637	743					
MAP at BT154											

<b>1</b> STRAIGHT-IN LANDING RWY 01						<b>1</b> CIRCLE-TO-LAND Not Authorized West of Rwy					
LNAV/VNAV DA(H) <b>990'</b> (406')			LNAV MDA(H) <b>990'</b> (412')			Max Kts			MDA(H)		
A	CMV 1500m			CMV 1500m			90	1020' (442') - 1600m			
B	CMV 1500m			CMV 1500m			120	1030' (452') - 1600m			
C	NOT APPLICABLE			NOT APPLICABLE			C	NOT APPLICABLE			
D	NOT APPLICABLE			NOT APPLICABLE			D	NOT APPLICABLE			

RJBT/TJH  
TAJIMA

30 SEP 22  
Eff 5 Oct 1500Z (12-2)

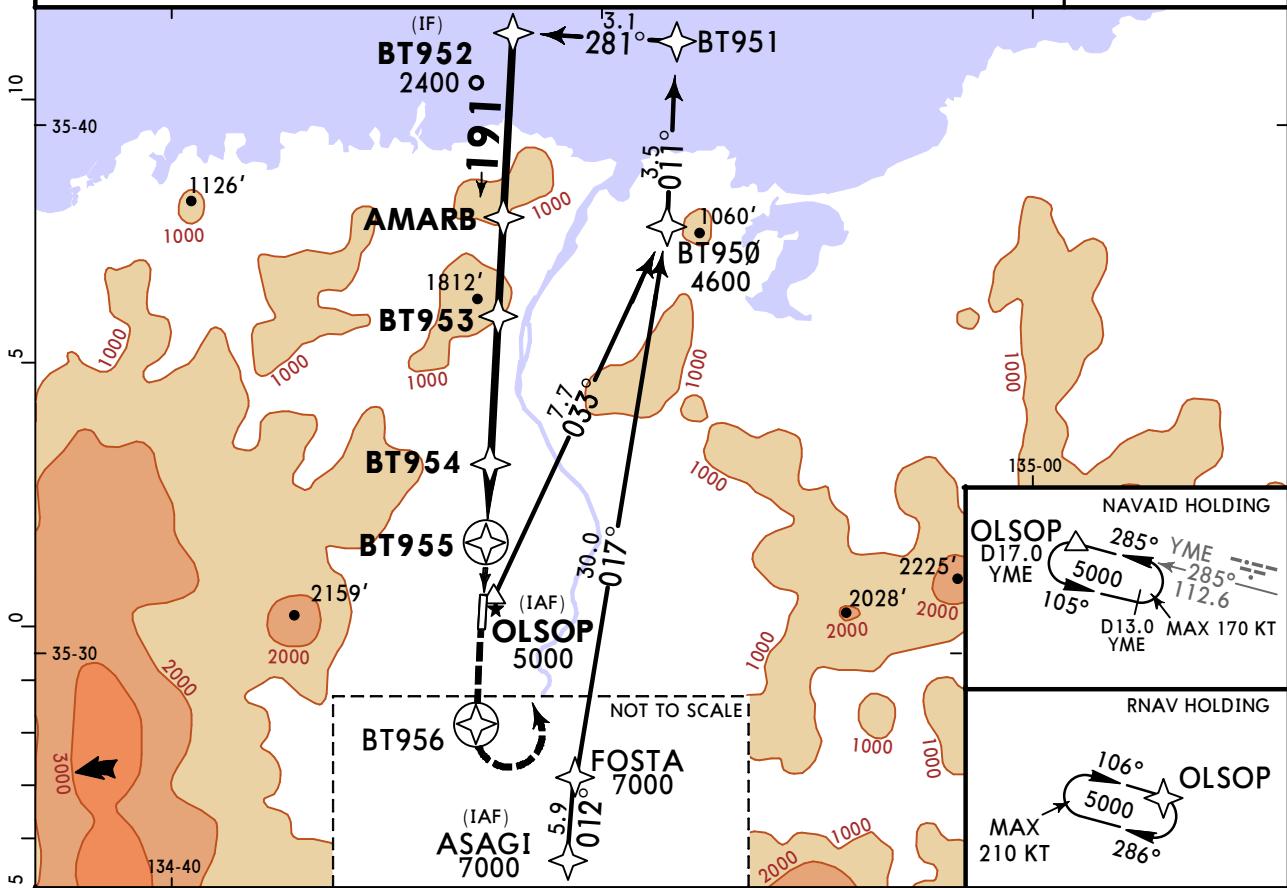
JEPPESSEN

Missed Apch Climb  
Gradient Min 5.0%

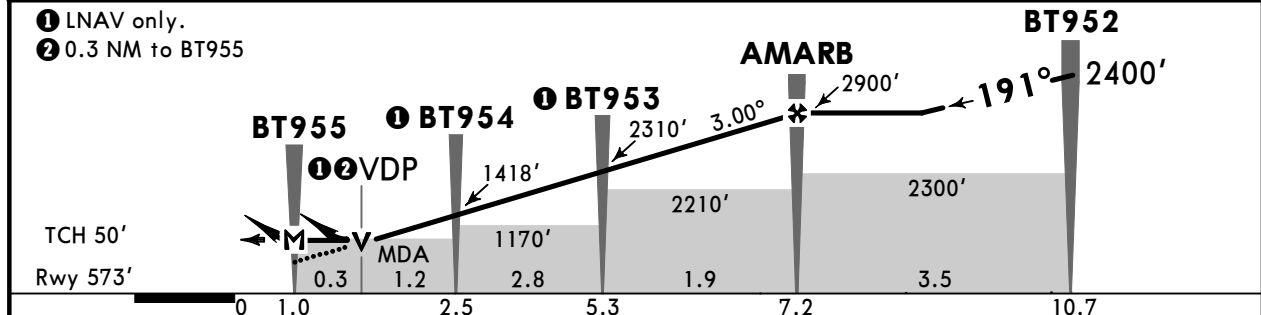
CAT A & B

TAJIMA, JAPAN  
RNP Rwy 19

TOKYO Control 124.95 133.8			*TAJIMA Radio (AFIS) 118.4		
RNAV	Final Apch Crs 191°	Refer to Profile	LNAV/VNAV DA(H) 1000' (427')	Apt Elev 578' Rwy 573'	6100
<b>MISSED APCH:</b> Direct to BT956, then turn LEFT direct to OLSOP and hold at 5000'. Contact TAJIMA Radio. Missed approach climb gradient minimum 5.0%.					
RNP Apch	Alt Set: IN (hPa on req)	Trans level: FL140	Trans alt: 14000'	MSA ARP	
Baro-VNAV not authorized below -5°C.					



DIST to BT955	MAP	1.0	2.0	3.0	4.0	5.0	6.0	FAF
ALTITUDE		1259'	1577'	1896'	2214'	2533'	2851'	2900'



Gnd speed-Kts	70	90	100	120	140	160	REIL PAPI-L	BT956	LT	D	OLSOP 5000'
Glide Path Angle 3.00°	372	478	531	637	743	849					
MAP at BT955											

<b>1</b> STRAIGHT-IN LANDING RWY 19 LNAV/VNAV DA(H) 1000' (427') LNAV MDA(H) 1000' (422')				<b>1</b> CIRCLE-TO-LAND Not Authorized West of Rwy			
A	CMV 1500m		CMV 1500m		Max Kts	MDA(H)	
B	CMV 1500m		CMV 1500m		90	1020' (442') - 1600m	
C	NOT APPLICABLE		NOT APPLICABLE		120	1030' (452') - 1600m	
D	NOT APPLICABLE		NOT APPLICABLE		C	NOT APPLICABLE	
D	NOT APPLICABLE		NOT APPLICABLE		D	NOT APPLICABLE	

**1** Minima with Missed Apch Climb Gradient of 2.5% are not established.  
 CHANGES: Procedure title, requirement notes. © JEPPESSEN, 2018, 2022. ALL RIGHTS RESERVED.

### Chart changes since cycle 15-2023

ADD = added chart, REV = revised chart, DEL = deleted chart.

ACT	PROCEDURE IDENT	INDEX	REV DATE	EFF DATE
<b>TAJIMA, (TAJIMA - RJBT)</b>				

## TERMINAL CHART CHANGE NOTICES

### Chart Change Notices for Airport RJBT

**Type:** Terminal

**Effectivity:** Temporary

**Begin Date:** 20230322

**End Date:** 20230906

(11-1) LOC Rwy01- procedure not available due to unserviceability of Tajima LOC DME (ITH) From 1500UTC 22 MAR 2023 to 1500UTC 6 SEP 2023.