

List of pages in this Trip Kit

Trip Kit Index

Airport Information For BKPR

Terminal Charts For BKPR

Revision Letter For Cycle 16-2023

Change Notices

Notebook

General Information

Location: PRISTINA SCG
ICAO/IATA: BKPR / PRN
Lat/Long: N42° 34.37', E021° 02.15'
Elevation: 1793 ft

Airport Use: Joint-Use
Daylight Savings: Observed
UTC Conversion: -1:00 = UTC
Magnetic Variation: 5.0° E

Fuel Types: Jet A-1
Customs: Yes
Airport Type: IFR
Landing Fee: Yes
Control Tower: Yes
Jet Start Unit: No
LLWS Alert: No
Beacon: Yes

Sunrise: 0528 Z
Sunset: 1513 Z

Runway Information

Runway: 17
Length x Width: 9974 ft x 148 ft
Surface Type: asphalt
TDZ-Elev: 1789 ft
Lighting: Edge, ALS, Centerline, REIL, TDZ

Runway: 35
Length x Width: 9974 ft x 148 ft
Surface Type: asphalt
TDZ-Elev: 1793 ft
Lighting: Edge, ALS, Centerline

Communication Information

ATIS: 134.385
Pristina Tower: 126.550
Pristina Ground: 128.830
Pristina Ramp/Taxi: 134.975
Pristina Approach: 24.610 Military
Pristina Approach: 135.475
Pristina Approach: 125.980

BKPR/PRN
ADEM JASHARI

JEPPESEN

2 DEC 22

10-1P

PRISTINA, KOSOVO
AIRPORT BRIEFING**1. GENERAL****1.1. ATIS**

ATIS 134.385

1.2. LOW VISIBILITY PROCEDURES (LVP)**1.2.1. GENERAL**

LVP applicable to CAT II/III operations are applied at the following conditions:

- When the RVR reported at TDZ is 550m or below;
- When cloud base height is below 200' according to the local meteorological report;
- When the rapid deterioration of weather conditions recommends so.

Pilots will be informed by ATIS and/or RTF when LVP are in force.

ILS CAT II/III operations are available for RWY 17 by operators for approach, landing and departure operations with RVR less than 550m.

The RWY and critical/sensitive areas are protected against incursions while an ACFT is conducting arrival/departure operation in RVR conditions less than a value of 550m. In cases when no stop bar is available, in the most restrictive case, protection will be achieved by only allowing one ACFT movement at time.

Pilots intending to conduct CAT II/III approaches and landing for training purposes shall inform ATC in advance.

In case of low visibility conditions, a reduced APT capacity to be expected due to the required increase in spacing between arriving ACFT, and the restrictions applied to ground movements.

1.2.2. GROUND MOVEMENT OF ACFT

During LVP there should be no more than one ACFT or ground personnel on the same TWY, at any given time. Same criteria are applicable for apron movement (i.e. one ACFT can enter/vacate/push-back). Exceptions may be allowed for a short time only in cases when is necessary for the Follow-me car to guide ACFT to/from aprons.

A landing ACFT should not stop taxiing until well clear of ILS sensitive area. RWYs exit points will be kept clear of any ACFT or vehicles to allow landed ACFT to move out of the ILS sensitive area with no delay. Until landing ACFT has cleared the ILS sensitive area the RWY is not usable for CAT II or III operations even through the obstructing ACFT may well be clear of the RWY itself.

Arriving traffic should be considered to be clear of the ILS sensitive area only after pilots report when on parallel TWY (i.e. A3, A4, or A5 respectively).

Landing ACFT are expected to vacate via TWY R2. In cases when this is not practicable, ACFT can vacate via TWY F or G and inform ATC for such action.

Departing ACFT shall enter RWY 17 via TWY C only:

- Taxiing from apron K: B1 or B2, A3, A2, A1, C to holding point CAT II/III;
- Taxiing from apron D: via TWY C to holding point CAT II/ III;
- Taxiing from apron L: via TWY A3, A2, A1, C to holding point CAT II/III.

BKPR/PRN
ADEM JASHARI

JEPPESEN

2 DEC 22

10-1P1

PRISTINA, KOSOVO
AIRPORT BRIEFING

1. GENERAL

1.3. PARKING INFORMATION

VDGS available on apron K stands 201 thru 203B.

In stands 101A, 101 and 101B ACFT will be parked using marshaller. In case of VDGS failure, marshaller is available at each stand.

1.4. OTHER INFORMATION

High level of bird activity.
RWY 35 right-hand circuit.

2. ARRIVAL

2.1. CAT II/III OPERATIONS

RWY 17 is approved for CAT II/III operations.

2.2. TAXI PROCEDURES

2.2.1. STANDARD TAXI ROUTES FOR ARRIVAL

2.2.1.1. FROM RWY 17

To apron D - use TWYs: F - A4 - A3 - A2 - A1 or G - A5 - A4 - A3 - A2 - A1 or R2 - A3 - A2 - A1.

To apron J - use TWYs: F - A4 - A3 - T or G - A5 - A4 - A3 - T or R2 - A3 - T.

To apron K - use TWYs: F - A4 - A3 - B3 or F - A4 - A3 - B2 or G - A5 - A4 - A3 - B3 or G - A5 - A4 - A3 - B2 or R2 - A3 - B3 or R2 - A3 - B2.

To apron L - use TWYs: F - A4 - H2 or F - A4 - H3 or G - A5 - A4 - H2 or G - A5 - H3 or R2 - A4 - H2 or R2 - A4 - H3.

To apron M - use TWYs: F - A4 - A3 - B2 or G - A5 - A4 - A3 - B2 or R2 - A3 - B2.

To apron N - use TWYs: F - A4 - H1 or G - A5 - A4 - H1 or R2 - H1.

2.2.1.2. FROM RWY 35

To apron D - use TWYs: C or E - A1 or R1 - A2 - A1.

To apron J - use TWYs: C - A1 - A2 - T or E - A2 - T or R1 - T.

To apron K - use TWYs: C - A1 - A2 - A3 - B2 or C - A1 - A2 - A3 - B3 or E - A2 - A3 - B2 or E - A2 - A3 - B3 or R1 - A2 - A3 - B2 or R1 - A2 - A3 - B3.

To apron L - use TWYs: C - A1 - A2 - A3 - H2 or C - A1 - A2 - A3 - A4 - H3 or E - A2 - A3 - H2 or E - A2 - A3 - A4 - H3 or R1 - A2 - A3 - H2 or R1 - A2 - A3 - A4 - H3.

To apron M - use TWYs: E - A2 - A3 - B2 or C - A1 - A2 - A3 - B2 or R1 - A2 - A3 - B2.

To apron N - use TWYs: C - A1 - A2 - A3 - H1 or E - A2 - A3 - H1 or R1 - A2 - A3 - H1.

BKPR/PRN
ADEM JASHARI

JEPPESEN

21 JAN 22

10-1P2

Eff 27 Jan

PRISTINA, KOSOVO
AIRPORT BRIEFING

3. DEPARTURE

3.1. DE-ICING

De-icing on apron M.

3.2. TAXI PROCEDURES

3.2.1. STANDARD TAXI ROUTES FOR DEPARTURE

3.2.1.1. TO RWY 17

From apron D - use TWY C.

From apron J - use TWYs: T - A2 - E or T - A2 - A1 - C.

From apron K - use TWYs: B2 - A3 - A2 - A1 - C or B3 - A3 - A2 - A1 - C or B2 - A3 - A2 - E or B3 - A3 - A2 - E.

From apron L - use TWYs: H2 - A3 - A2 - A1 - C or H3 - A4 - A3 - A2 - A1 - C or H2 - A3 - A2 - E or H3 - A4 - A3 - A2 - E.

From apron M - use TWYs: B1 - A3 - A2 - A1 - C or B1 - A3 - A2 - E.

From apron N - use TWYs: H1 - A3 - A2 - A1 - C or H1 - A3 - A2 - E.

3.2.1.2. TO RWY 35

From apron D - use TWYs: A1 - A2 - A3 - A4 - F or A1 - A2 - A3 - A4 - A5 - G.

From apron J - use TWYs: T - A2 - A3 - A4 - F or T - A2 - A3 - A4 - A5 - G.

From apron K - use TWYs: B2 - A3 - A4 - F or B2 - A3 - A4 - A5 - G or B3 - A3 - A4 - F or B3 - A3 - A4 - A5 - G.

From apron L - use TWYs: H2 - A4 - F or H3 - F or H2 - A4 - A5 - G or H3 - A5 - G.

From apron M - use TWYs: B1 - A3 - A4 - A5 - G or B1 - A3 - A4 - F.

From apron N - use TWYs: H1 - A4 - A5 - G or H1 - A4 - F.

3.3. START-UP AND PUSH-BACK PROCEDURES

Pilots are reminded that control of ACFT requiring start-up or push-back clearance on the aprons is the responsibility of ATC.

Standard push-back for stands 101 thru 203B on apron K:

Depending on RWY in use, ATC will issue instructions for ACFT to be pushed back, facing South or North only.

- Stand 101A - can be pushed back facing South only.
- Stand 201B - can be pushed back facing North only, if there is ACFT on apron M.

It is recommended that ACFT in stands 201B and 201A are pushed back facing South onto apron M, clear of TWY B2.

BKPR/PRN
ADEM JASHARI

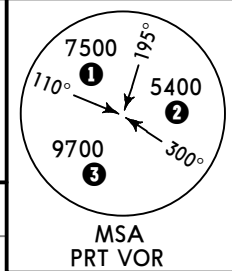
JEPPESSEN
5 AUG 22 **(10-1R)** Eff 11 Aug

PRISTINA, KOSOVO
RADAR MINIMUM ALTITUDES

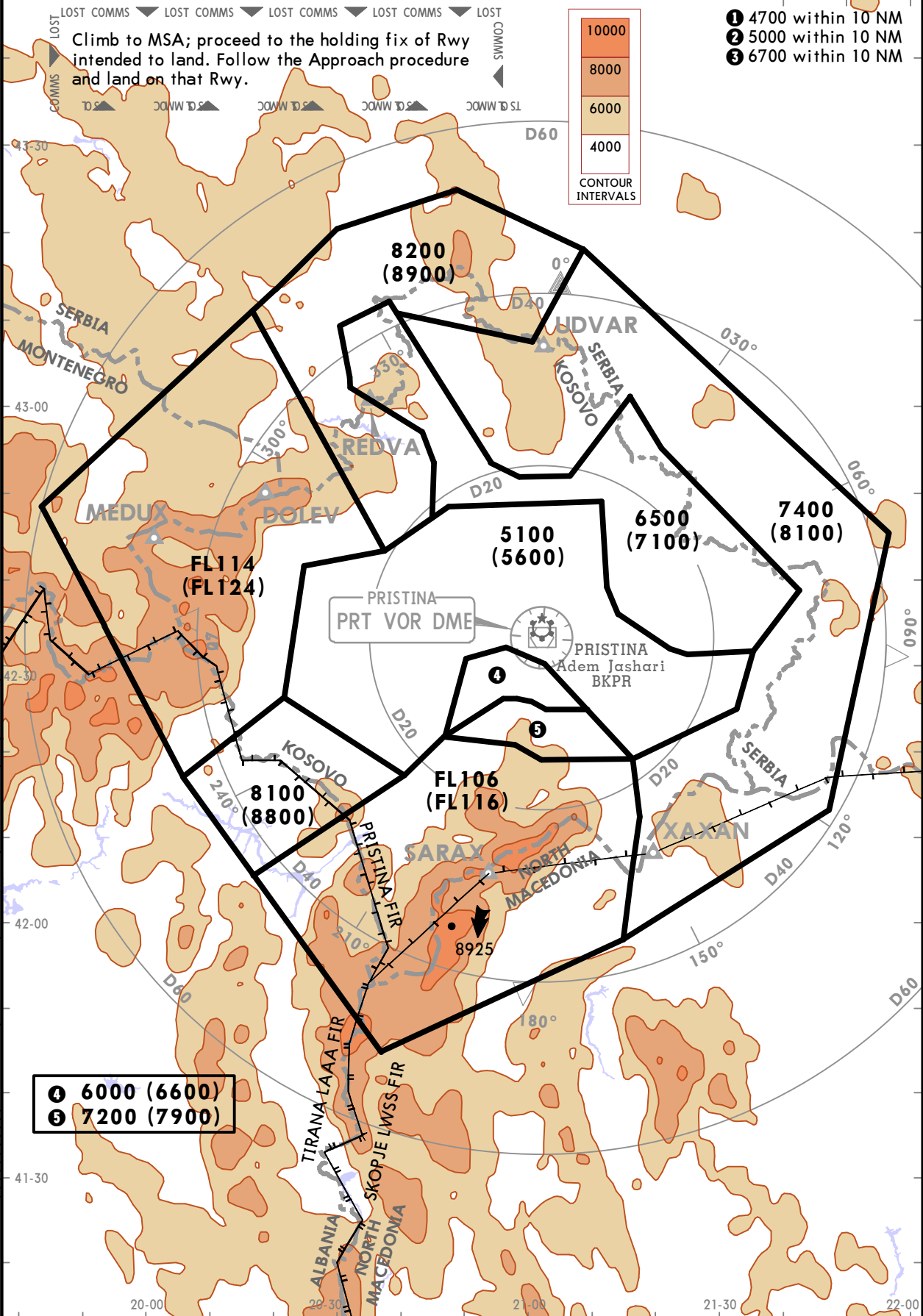
PRISTINA
Approach/Radar
135.475
125.980

Apt Elev
1793

Alt Set: hPa Trans level: By ATC Trans alt: 13000
1. Chart only to be used for cross-checking of altitudes while under radar control.
2. Altitudes in brackets are corrected for low temperature and apply for the period from December 1st till March 1st, unless otherwise instructed or published by NOTAM.



- ① 4700 within 10 NM
- ② 5000 within 10 NM
- ③ 6700 within 10 NM



- ④ 6000 (6600)
- ⑤ 7200 (7900)

BKPR/PRN
ADEM JASHARI

JEPPESSEN

PRISTINA, KOSOVO

25 NOV 22

10-2

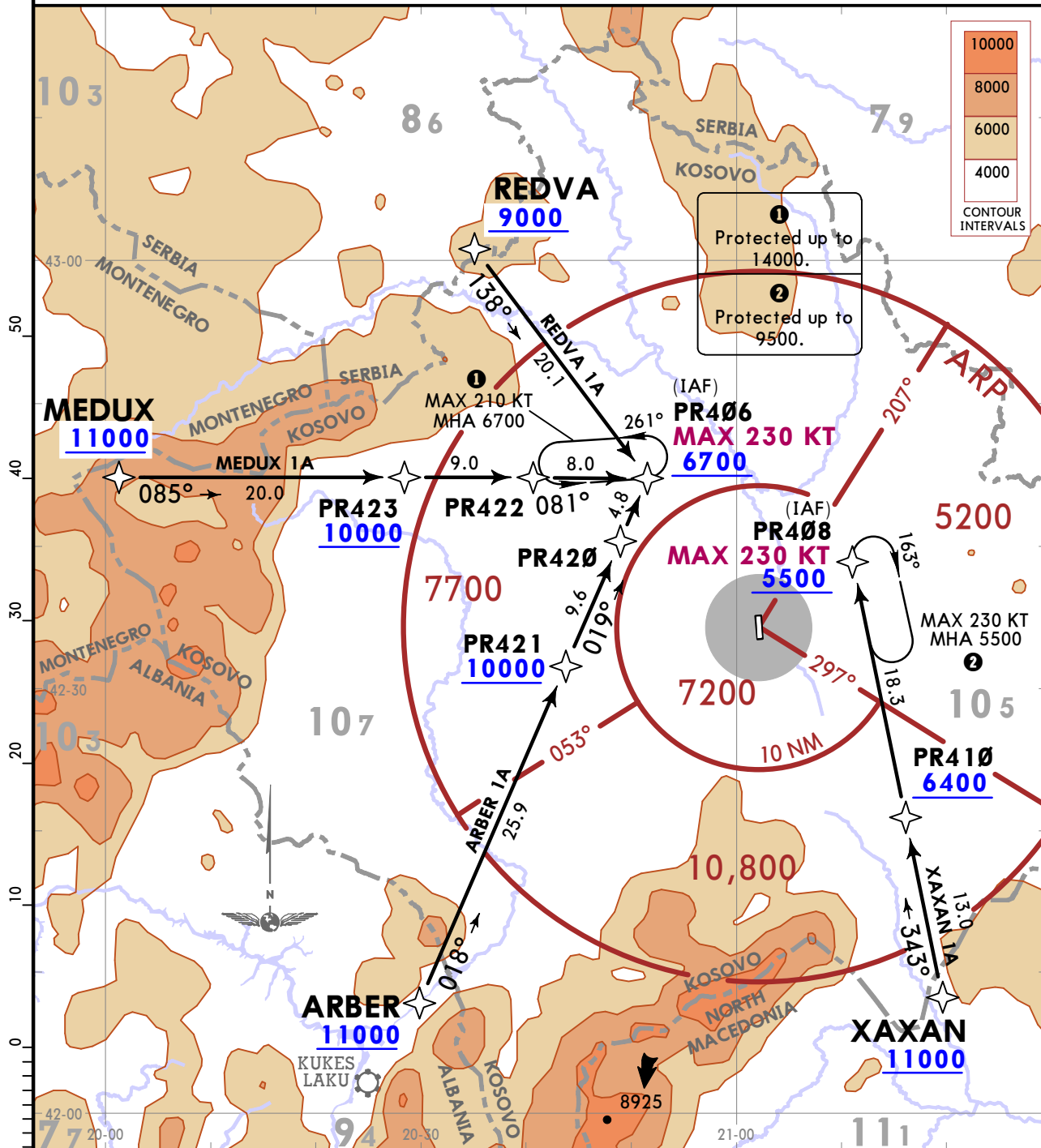
Eff 1 Dec

RNAV STAR

ATIS 134.385	Apt Elev 1793	Alt Set: hPa Trans level: By ATC	RNP 1.0 required
-----------------	------------------	-------------------------------------	------------------

ARBER 1A [ARBE1A]
MEDUX 1A [MEDU1A]
REDVA 1A [REDV1A]
XAXAN 1A [XAXA1A]
RNAV ARRIVALS
(RWY 17)

CAT A, B, C & D



STAR	ROUTING
ARBER 1A	ARBER (11000+) - PR421 (10000+) - PR420 - PR406 (K230-; 6700+).
MEDUX 1A	MEDUX (11000+) - PR423 (10000+) - PR422 - PR406 (K230-; 6700+).
REDVA 1A	REDVA (9000+) - PR406 (K230-; 6700+).
XAXAN 1A	XAXAN (11000+) - PR410 (6400+) - PR408 (K230-; 5500+).

CHANGES: ATIS frequency changed.

BKPR/PRN
ADEM JASHARI

JEPPESSEN

PRISTINA, KOSOVO

25 NOV 22

(10-2A)

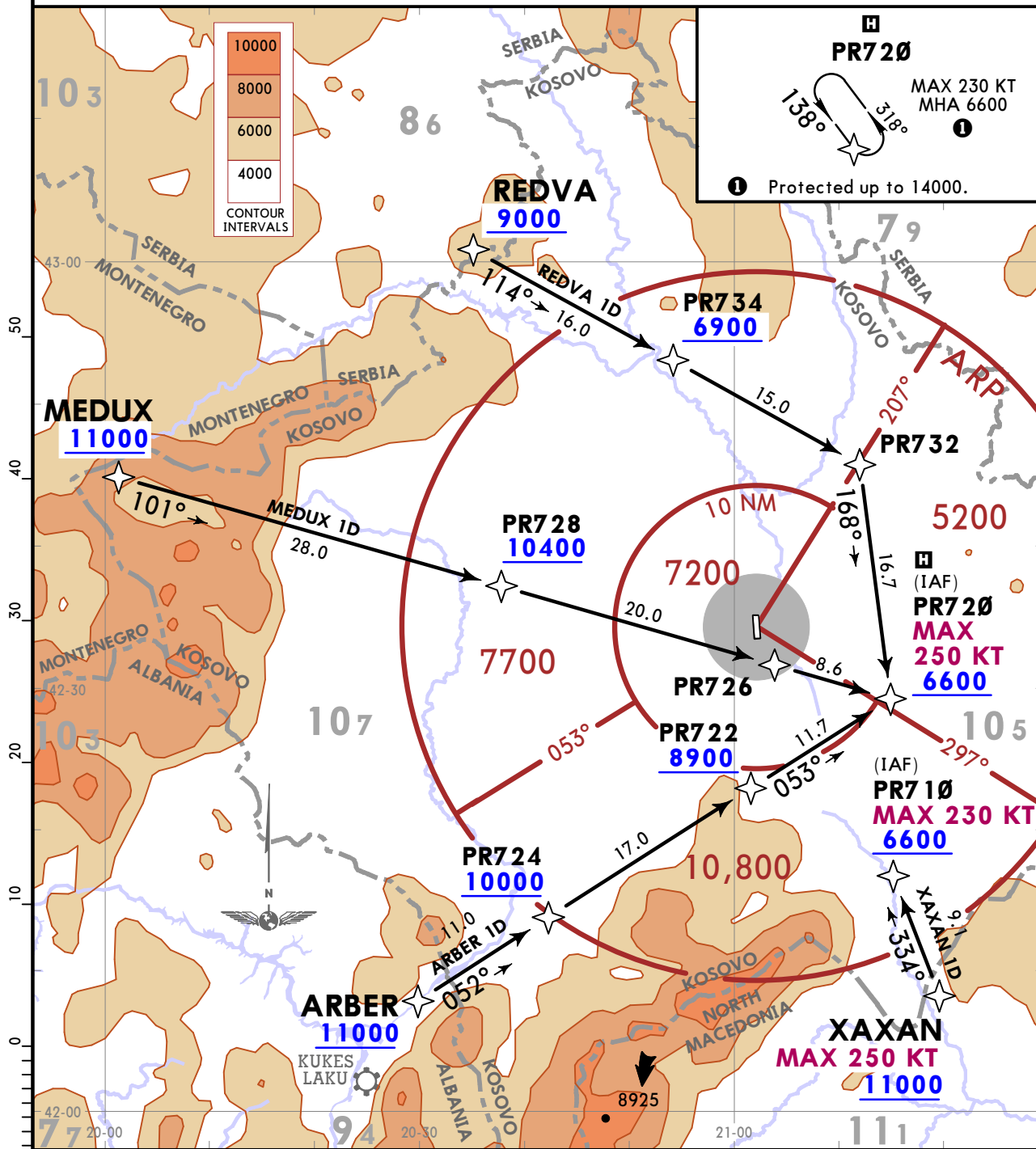
Eff 1 Dec

RNAV STAR

ATIS 134.385	Apt Elev 1793	Alt Set: hPa Trans level: By ATC	RNP 1.0 required
-----------------	------------------	-------------------------------------	------------------

ARBER 1D [ARBE1D]
MEDUX 1D [MEDU1D]
REDVA 1D [REDV1D]
XAXAN 1D [XAXA1D]
RNAV ARRIVALS
(RWY 35)

CAT A, B, C & D



STAR	ROUTING
ARBER 1D	ARBER (11000+) - PR724 (10000+) - PR722 (8900+) - PR720 (K250-; 6600+).
MEDUX 1D	MEDUX (11000+) - PR728 (10400+) - PR726 - PR720 (K250-; 6600+).
REDVA 1D	REDVA (9000+) - PR734 (6900+) - PR732 - PR720 (K250-; 6600+).
XAXAN 1D	XAXAN (K250-; 11000+) - PR710 (K230-; 6600+).

CHANGES: ATIS frequency changed.

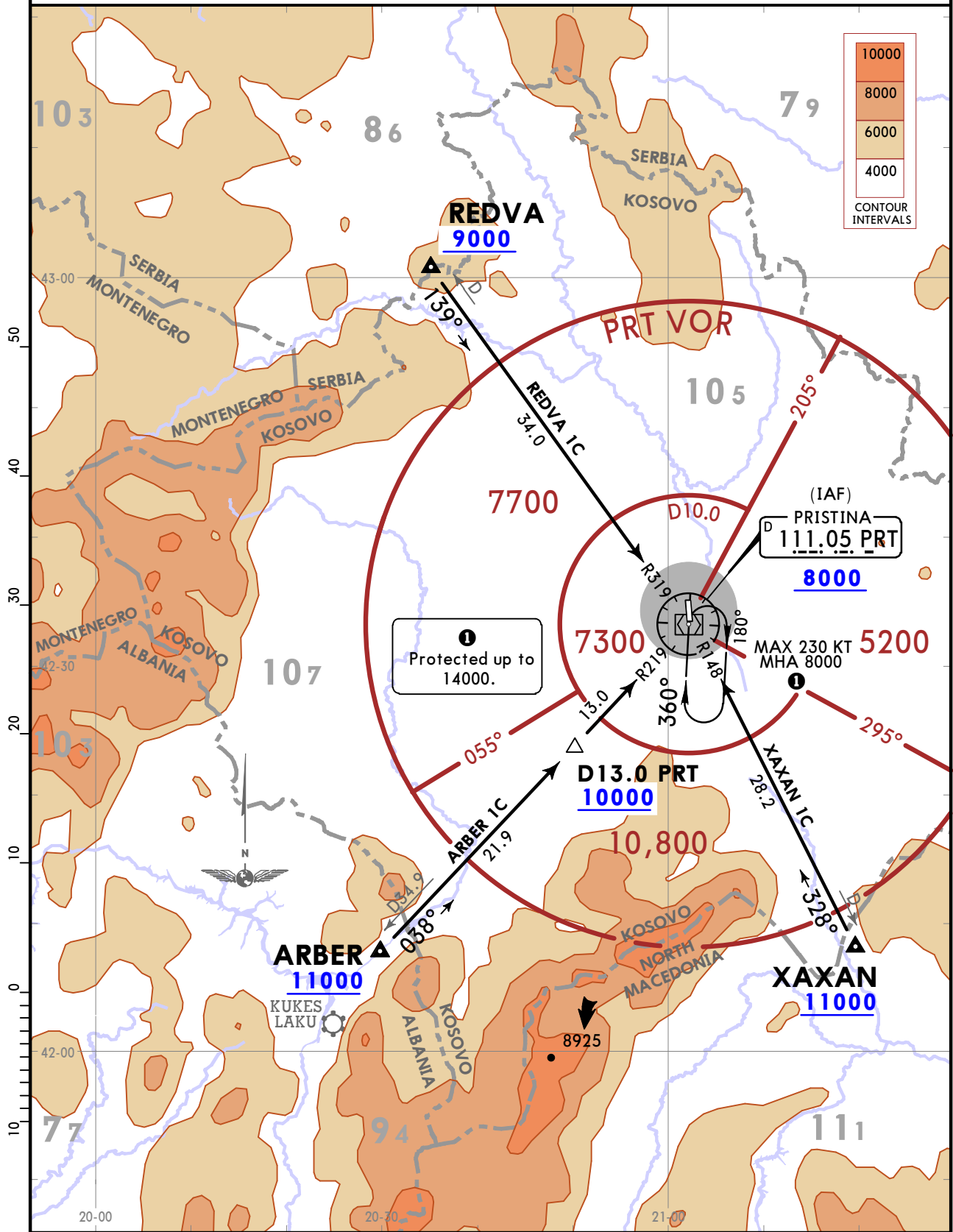
BKPR/PRN
ADEM JASHARI

JEPPESEN
25 NOV 22 **(10-2B)** **Eff 1 Dec**

PRISTINA, KOSOVO
STAR

ATIS 134.385	Apt Elev 1793	Alt Set: hPa Trans level: By ATC DME required.
------------------------	-------------------------	---

ARBER 1C [ARBE1C]
REDVA 1C [REDV1C]
XAXAN 1C [XAXA1C]
ARRIVALS
(RWY 17)



CHANGES: ATIS frequency changed.

BKPR/PRN
ADEM JASHARI

JEPPESEN
25 NOV 22 **(10-2C)** **Eff 1 Dec**

PRISTINA, KOSOVO

STAR

ATIS
134.385

Apt Elev
1793

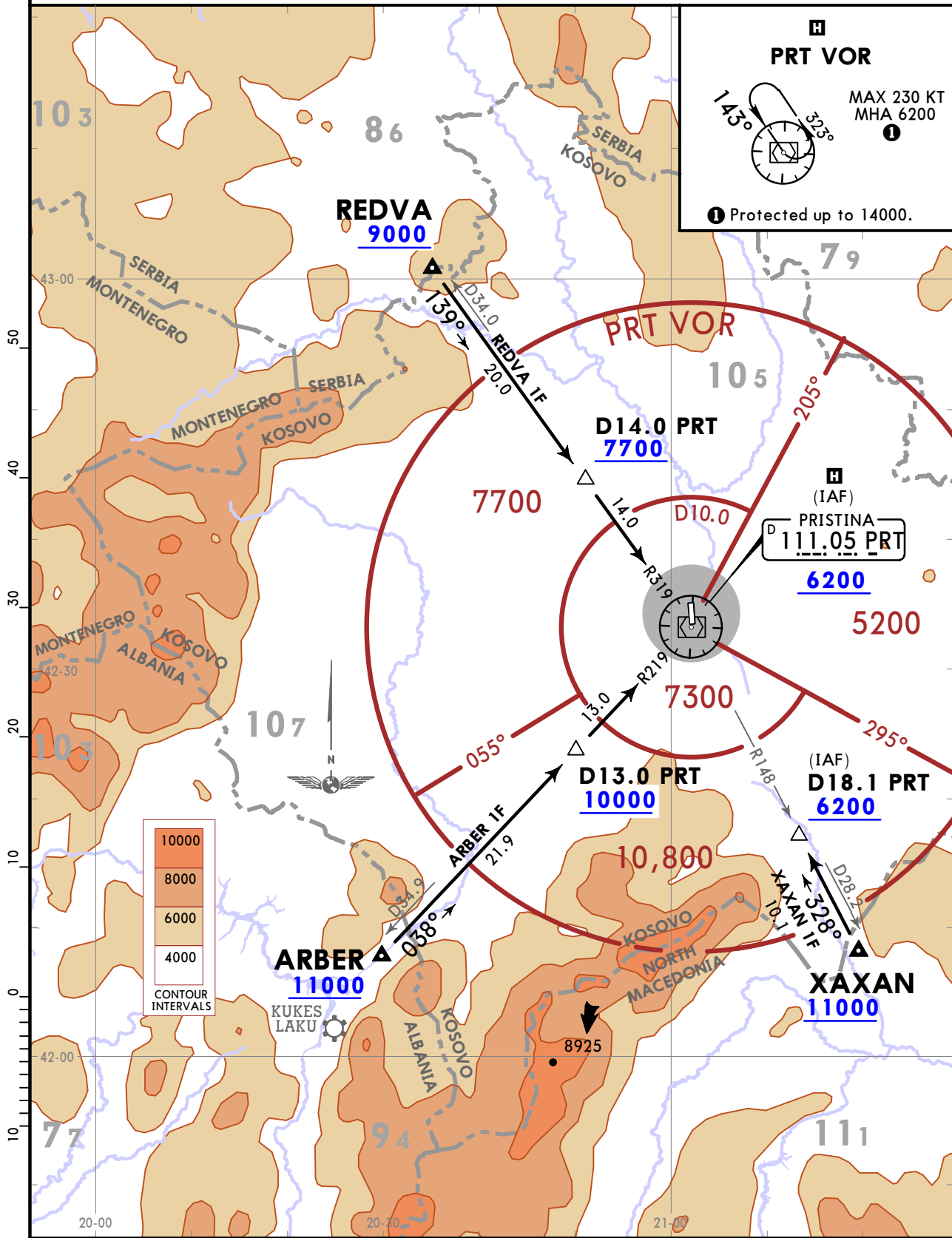
Alt Set: hPa Trans level: By ATC
DME required.

ARBER 1F [ARBE1F]
REDVA 1F [REDV1F]
XAXAN 1F [XAXA1F]
ARRIVALS
(RWY 35)

PRT VOR

MAX 230 KT
MHA 6200

Protected up to 14000.



CHANGES: ATIS frequency changed.

BKPR/PRN
ADEM JASHARI

JEPPESEN

PRISTINA, KOSOVO

25 NOV 22

10-2D

Eff 1 Dec

STAR

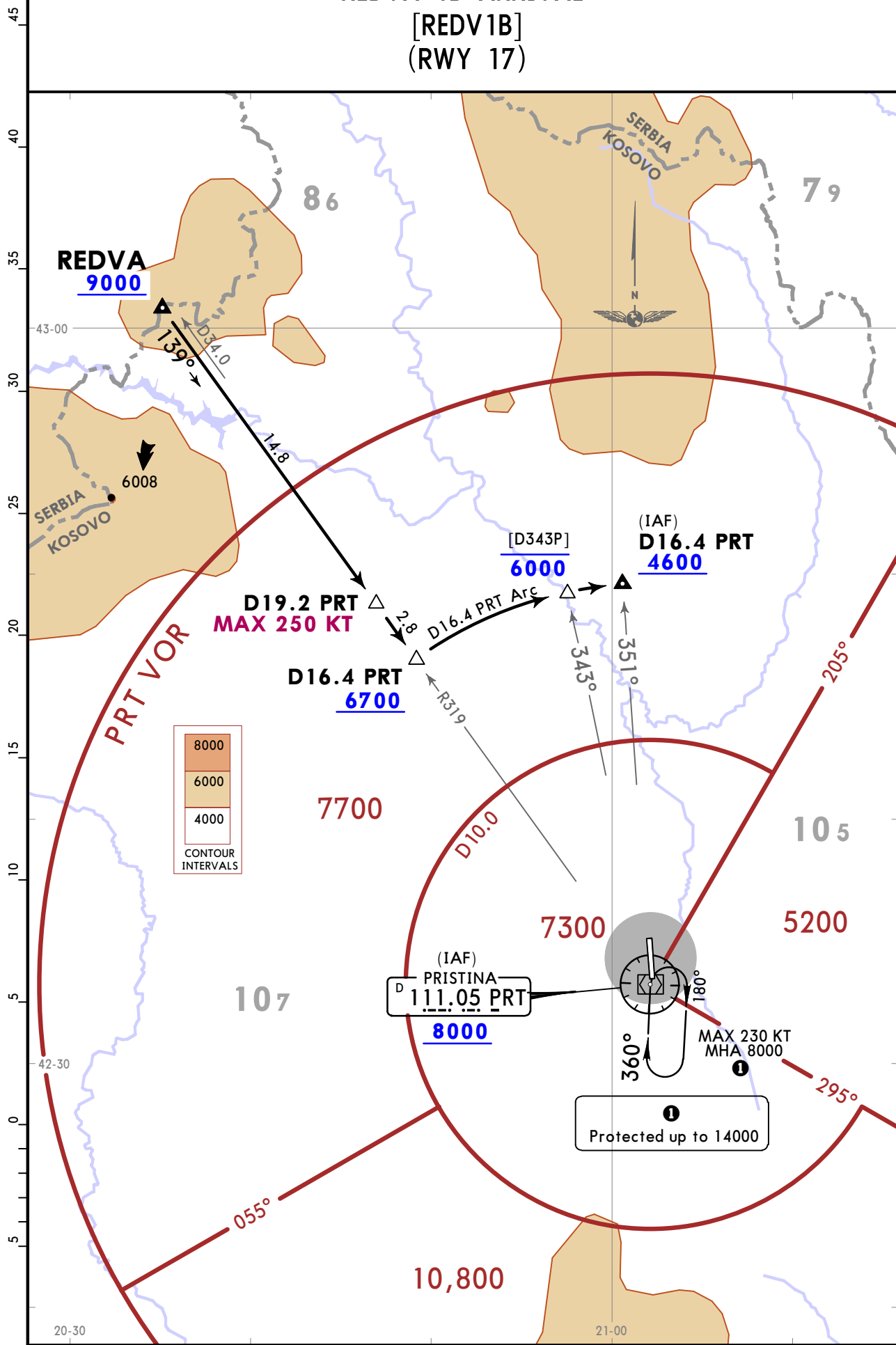
ATIS
134.385

Apt Elev
1793

Alt Set: hPa Trans level: By ATC
DME required.

REDVA 1B ARRIVAL

[REDV1B]
(RWY 17)



CHANGES: ATIS frequency changed.

© JEPPESEN, 2022. ALL RIGHTS RESERVED.

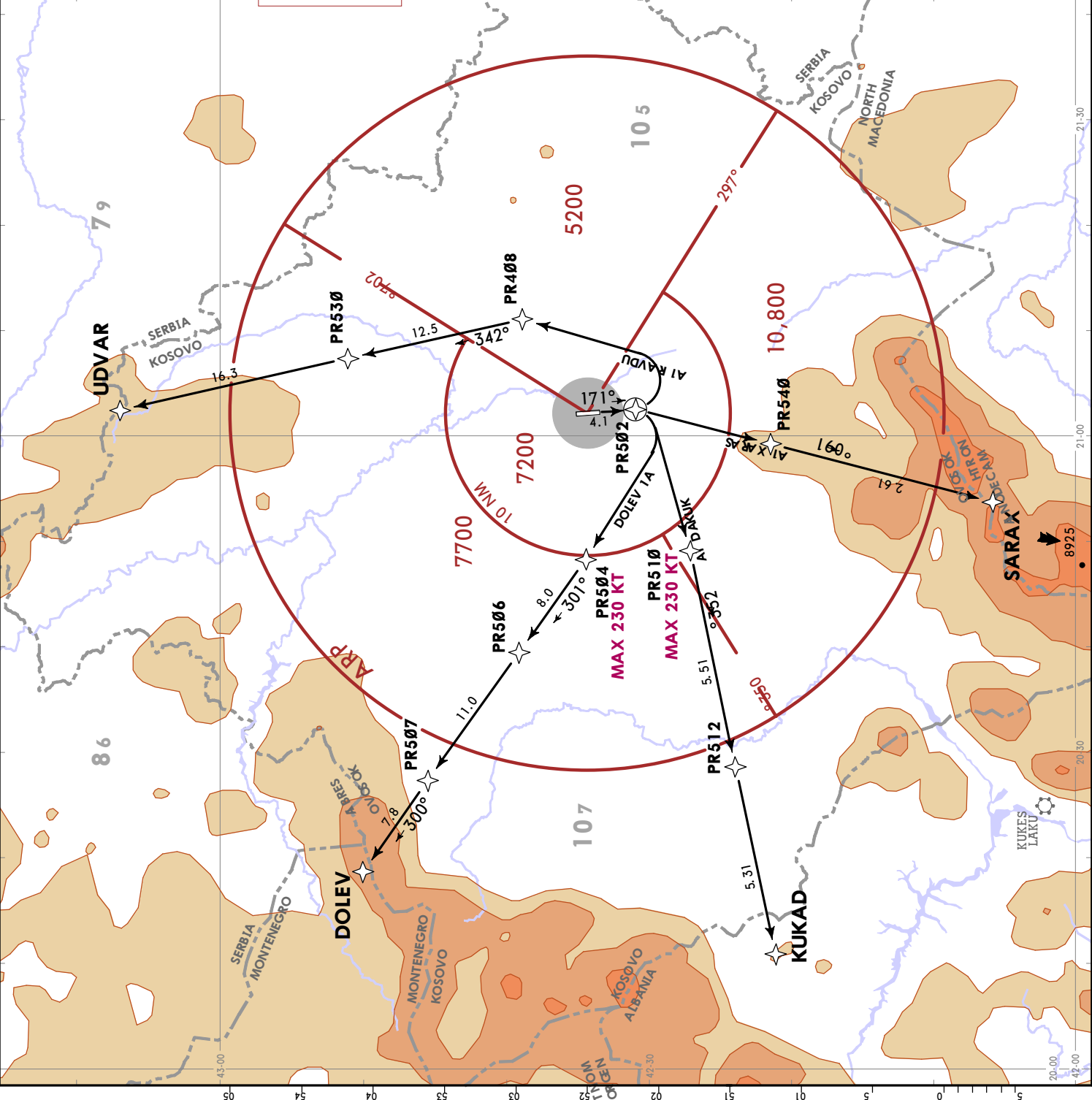
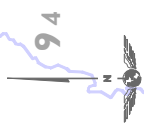
BKPR/PRN
ADEM JASHARI

JEPPESEN PRISTINA, KOSOVO
5 AUG 22 **10-3** **Eff 11 AUG** **RNAV SID**

Apt Elev
1793

Trans alt: 13000 RNP 1.0 required

DOLEV 1A [DOLE1A]
KUKAD 1A [KUKA1A]
SARAX 1A [SARA1A]
UDVAR 1A [UDVA1A]
RNAV DEPARTURES
(RWY 17)



Close-in obstacles
VOR/DME Antenna, 0.1 NM after DER,
0.1 NM RIGHT of RWY CL, Alt 1833.

These SIDs require minimum climb gradients of:

DOLEV 1A: 6.3% up to 3400, then 3.3%;
KUKAD 1A: 5.9% up to 3500, then 3.3%;
SARAX 1A: 5.4% up to 8900, then 3.3%;
UDVAR 1A: 3.4% up to 2100, then 3.3%;

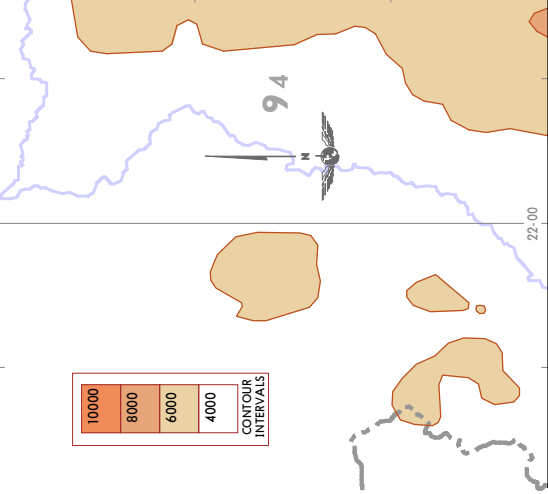
UDVAR 1A	75	100	150	200	250	300
Gnd speed-KT	75	100	150	200	250	300
3.3% V/V (fpm)	251	334	501	668	835	1003
3.4% V/V (fpm)	258	344	516	689	861	1033
5.4% V/V (fpm)	410	547	820	1094	1367	1641
5.9% V/V (fpm)	448	597	896	1195	1494	1792
6.3% V/V (fpm)	478	638	957	1276	1595	1914

SID	ROUTING
DOLEV 1A	Climb on course 171°, at PR502 turn RIGHT, direct to PR504 (MAX 230 KT), then to PR506, then to PR507, then to DOLEV.
KUKAD 1A	Climb on course 171°, at PR502 turn RIGHT, direct to PR510 (MAX 230 KT), then to PR512, then to KUKAD.
SARAX 1A	Climb on course 171°, at PR502 turn RIGHT, direct to PR540, then to SARAX.
UDVAR 1A	Climb on course 171°, at PR502 turn LEFT, direct to PR408, then to PR530, then to UDVAR.

JEYPESEN PRISTINA, KOSOVO
SID
 5 AUG 22 (10-3B) Eff 11 AUG

Apt Elev
 1793
 Trans alt: 13000

**KUKAD 1B [KUKA1B]
 SARAX 1B [SARA1B]
 UDVAR 1B [UDVA1B]
 DEPARTURES
 (RWY 17)
 HIGH PERFORMANCE AIRCRAFT**



Close-in obstacles
 VOR/DME Antenna, 0.1 NM after DER, 0.1 NM RIGHT of RWY CL, Alt 1833.

These SIDs require minimum climb gradients of:

KUKAD 1B: 4.8% up to 4200, then 3.3%;
 ATS climb gradient of 6.6% up to FL140 due to PRT
 VOR/DME coverage, advise ATC if unable to comply.

SARAX 1B: 5.2% up to 9500, then 3.3%.
UDVAR 1B: ATS slope of 4.0% up to 7000.

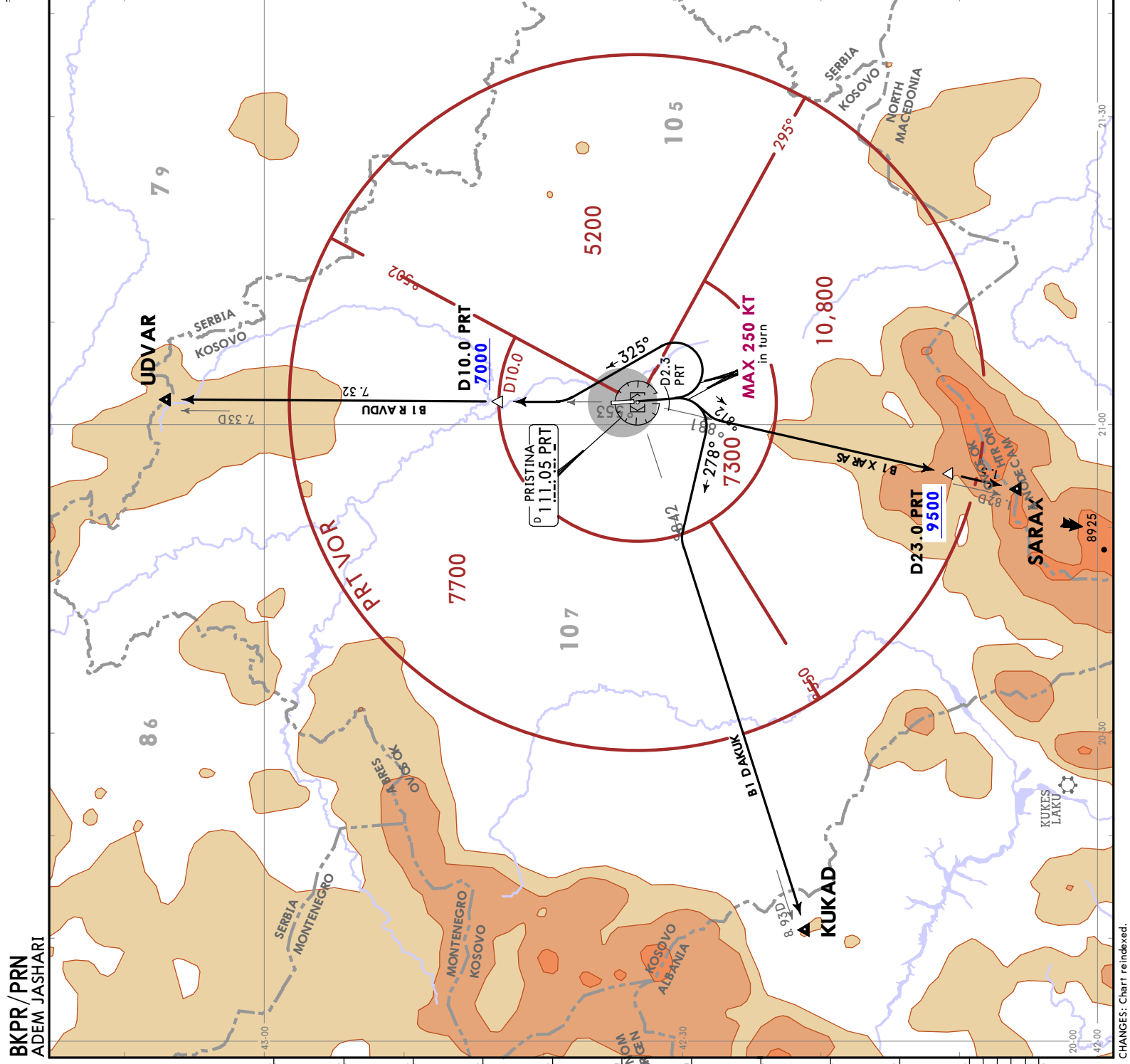
Gnd speed-KT	75	100	150	200	250	300
3.3% V/V (fpm)	251	334	501	668	835	1003
4.0% V/V (fpm)	304	405	608	810	1013	1215
4.8% V/V (fpm)	365	486	729	972	1215	1458
5.2% V/V (fpm)	395	527	790	1053	1316	1580
6.6% V/V (fpm)	501	668	1003	1337	1671	2005

SID ROUTING

KUKAD 1B On runway heading to D2.3 PRT, turn RIGHT, 278° track (MAX 250 KT), intercept PRT R248 (248° track) to KUKAD.

SARAX 1B On runway heading to D2.3 PRT, turn RIGHT, 218° track (MAX 250 KT), intercept PRT R188 (188° track) to SARAX.

UDVAR 1B On runway heading to D2.3 PRT, turn LEFT, 325° track (MAX 250 KT), intercept PRT R355 (355° track) to UDVAR.



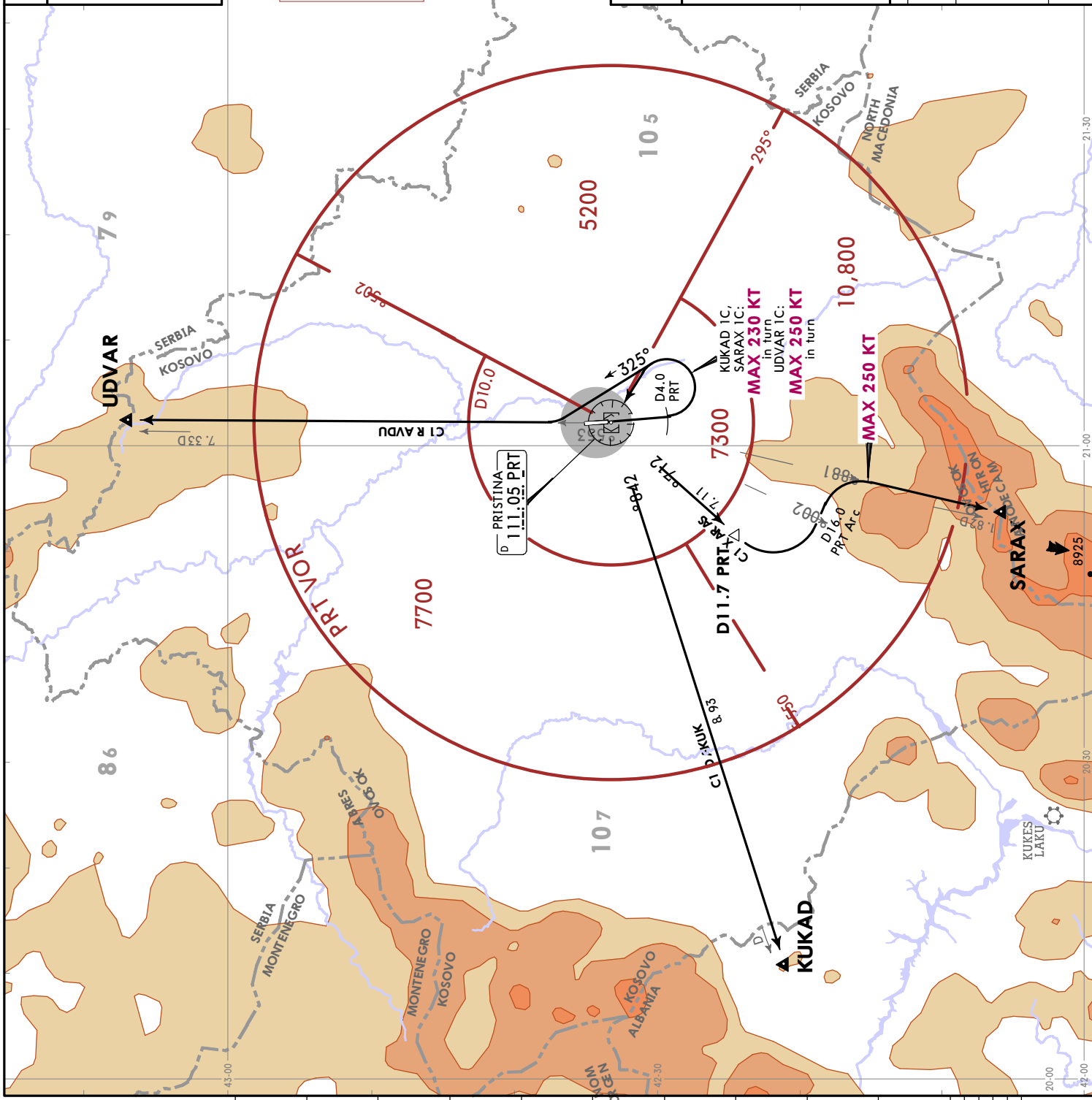
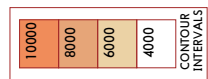
BKPR/PRN
 ADEM JASHARI

JEPPesen
 5 AUG 22 (10-3C) Eff: 11 AUG
BKPR/PRN
 ADEM JASHARI

PRISTINA, KOSOVO
SID

Apt Elev 1793
 Trans alt: 13000

**KUKAD 1C [KUKA1C]
 SARAX 1C [SARA1C]
 UDVAR 1C [UDVA1C]
 DEPARTURES
 (RWY 17)
 LOW PERFORMANCE AIRCRAFT**



KUKAD 1C, UDVAR 1C:
 Close-in obstacles
 VOR/DME Antenna, 0.1 NM after DER,
 0.1 NM RIGHT of RWY CL, Alt 1833.

These SIDs require minimum climb gradients of:
KUKAD 1C:
 4.4% up to 4100, then 3.3%;
SARAX 1C:
 4.4% up to 4100, then 3.3%;
UDVAR 1C:
 4.8% up to 9600, then 3.3%.

Gnd speed-KT	75	100	150	200	250	300
3.3% V/V (fpm)	251	334	501	668	835	1003
4.4% V/V (fpm)	334	446	668	891	1114	1337
4.8% V/V (fpm)	365	486	729	972	1215	1458

SID	ROUTING
KUKAD 1C	On runway heading to D4.0 PRT, turn LEFT (MAX 230 KT) direct to PRT VOR, PRT R248 (248° track) to KUKAD.
SARAX 1C	On runway heading to D4.0 PRT, turn LEFT (MAX 230 KT) direct to PRT VOR, PRT R217 (217° track) to D11.7 PRT, turn LEFT along D11.7 PRT Arc until PRT R200, then turn RIGHT to intercept PRT R188 (188° track) to SARAX (MAX 250 KT).
UDVAR 1C	On runway heading to D4.0 PRT, turn LEFT (MAX 250 KT), 325° track to intercept PRT R355 (355° track) to UDVAR.

JEPESEN PRISTINA, KOSOVO
SID
 5 AUG 22 (10-3D) Eff: 11 Aug

Apt Elev
1793
 Trans alt: 13000

**KUKAD 1E [KUKA 1E]
 SARAX 1E [SARA 1E]
 UDVAR 1E [UDVA 1E]
 DEPARTURES
 (RWY 35)
 HIGH PERFORMANCE AIRCRAFT**

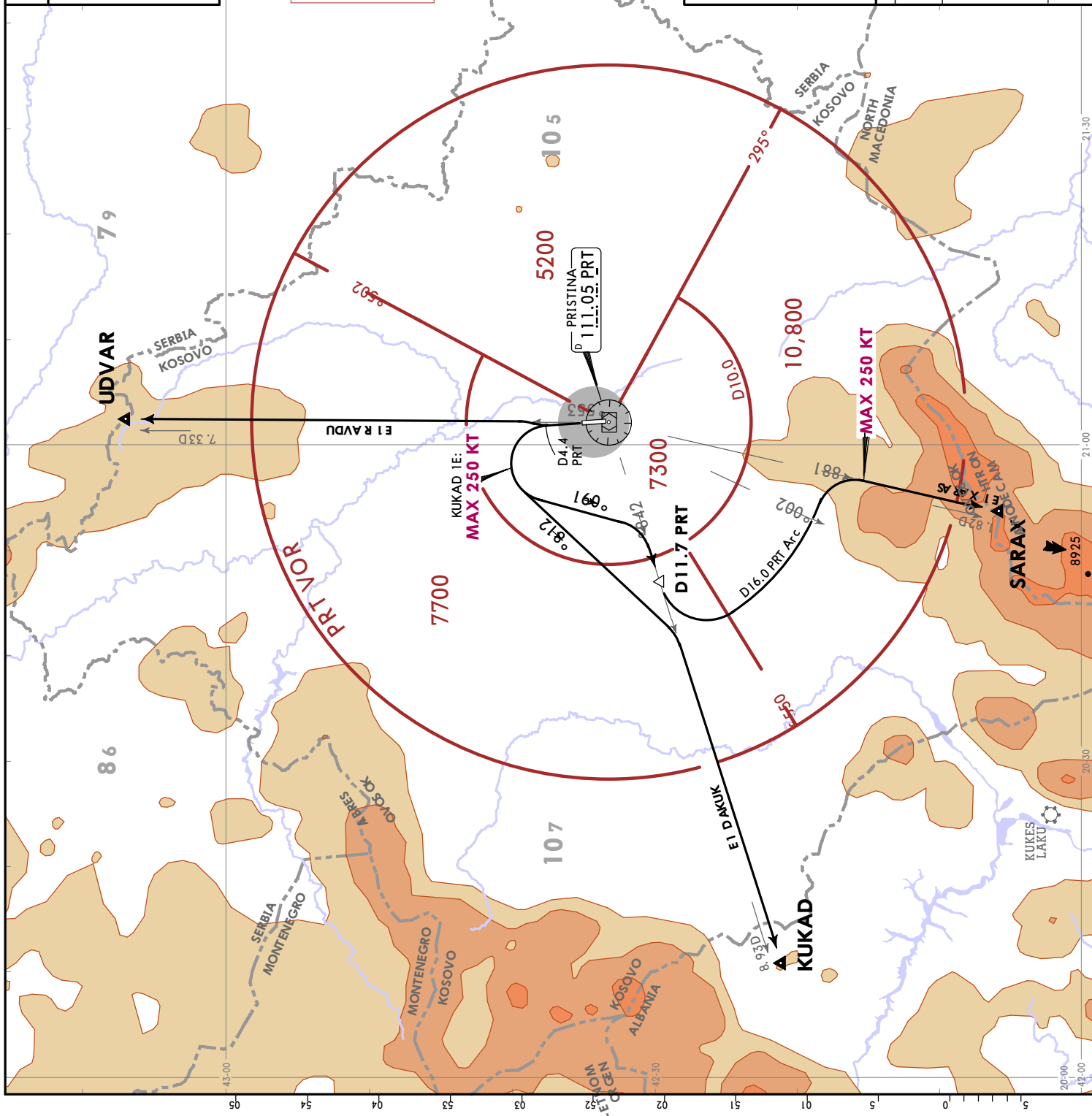
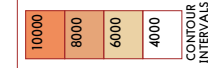
These SIDs require minimum climb gradients of:

KUKAD 1E: 6.3% up to 4000, then 3.3%.
 ATS climb gradient of 6.3% up to 10500 due to PRT VOR/DME coverage, advise ATC if unable to comply.

SARAX 1E: 6.3% up to 4200, then 3.3%.
UDVAR 1E: 3.5% up to 5900, then 3.3%.

Gnd speed-KT	75	100	150	200	250	300
3.3% V/V (fpm)	251	334	501	668	835	1003
3.5% V/V (fpm)	266	354	532	709	886	1063
6.3% V/V (fpm)	478	638	957	1276	1595	1914

SID	ROUTING
KUKAD 1E	On runway heading to D4.4 PRT, turn LEFT, 218° track (MAX 250 KT), intercept PRT R248 (248° track) to KUKAD.
SARAX 1E	On runway heading to D4.4 PRT, turn LEFT 190° track to intercept and follow PRT R248 (248° track) until D11.7 PRT, turn LEFT along D16.0 PRT Arc until PRT R200, turn RIGHT, intercept PRT R188 (188° track) (MAX 250 KT) to SARAX.
UDVAR 1E	On runway heading to D4.4 PRT, turn RIGHT, intercept PRT R355 (355° track) to UDVAR.

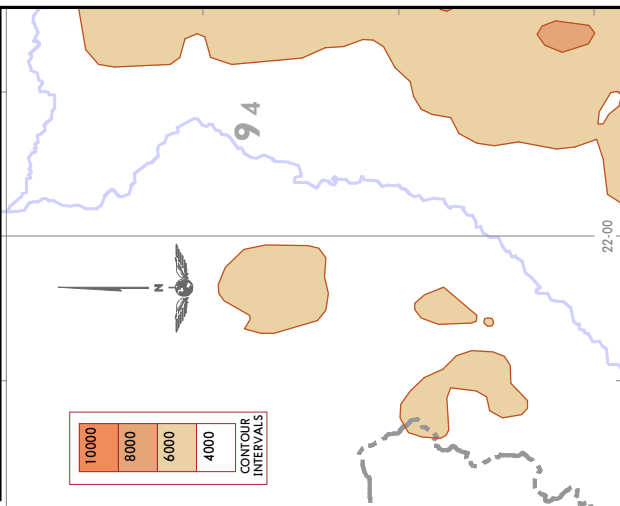


BKPR/PRN
 ADEM JASHARI

JEPPesen
 5 AUG 22 10-3E Eff 11 Aug
PRISTINA, KOSOVO
SID

Apt Elev 1793
 Trans alt: 13000

**KUKAD 1F [KUKA1F]
 SARAX 1F [SARA1F]
 UDVAR 1F [UDVA1F]
 DEPARTURES
 (RWY 35)
 LOW PERFORMANCE AIRCRAFT**



These SIDs require minimum climb gradients of:

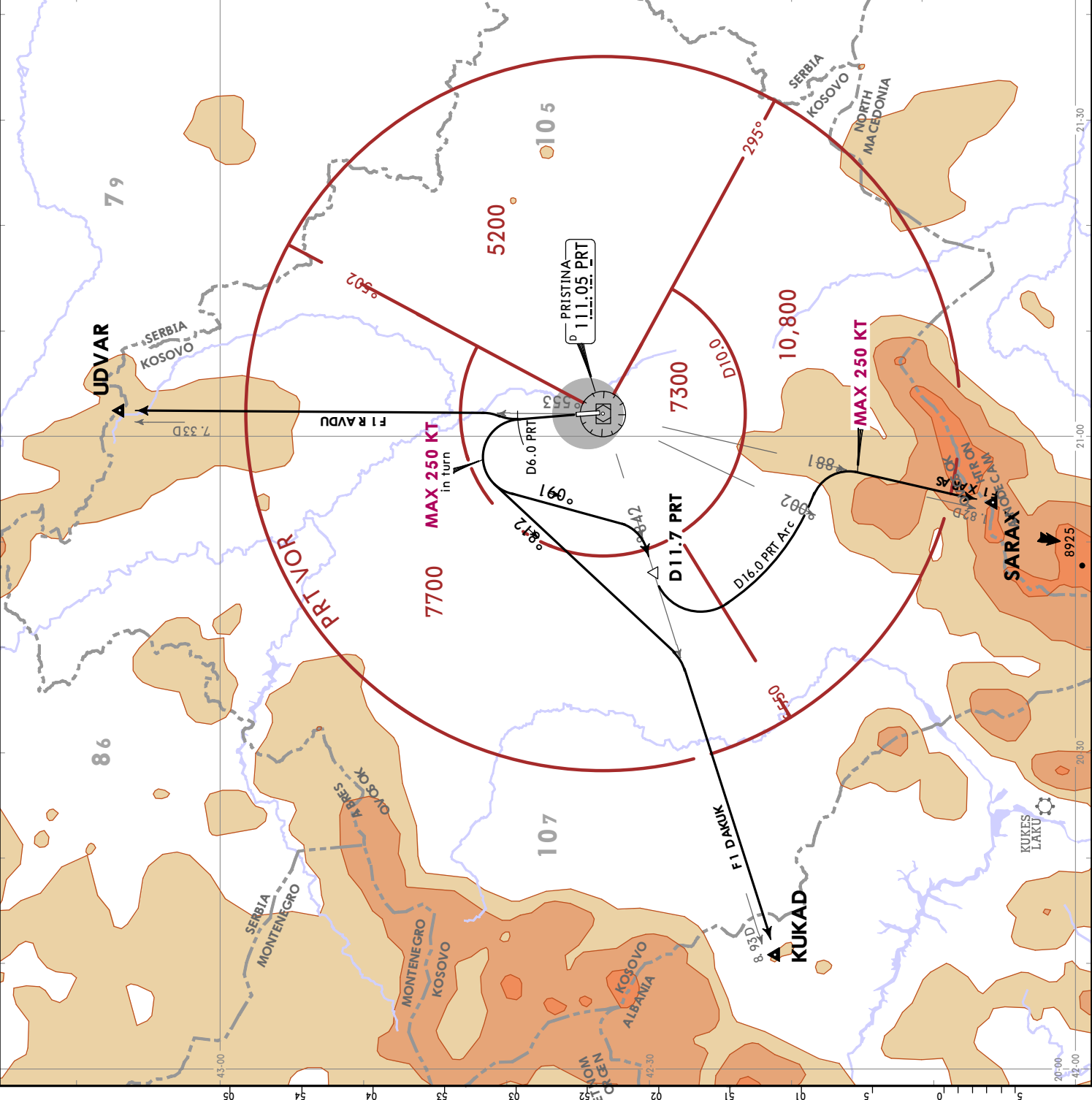
KUKAD 1F: 4.5% up to 4100, then 3.3%.
 ATS climb gradient of 5.0% up to FL140 due to PRT
 VOR/DME coverage, advise ATC if unable to comply.

SARAX 1F: 4.5% up to 4600, then 3.3%.
UDVAR 1F: 3.5% up to 5900, then 3.3%.

Gnd speed-KT	75	100	150	200	250	300
3.3% V/V (fpm)	251	334	501	668	835	1003
3.5% V/V (fpm)	266	354	532	709	886	1063
4.5% V/V (fpm)	342	456	684	911	1139	1367
5.0% V/V (fpm)	380	506	760	1013	1266	1519

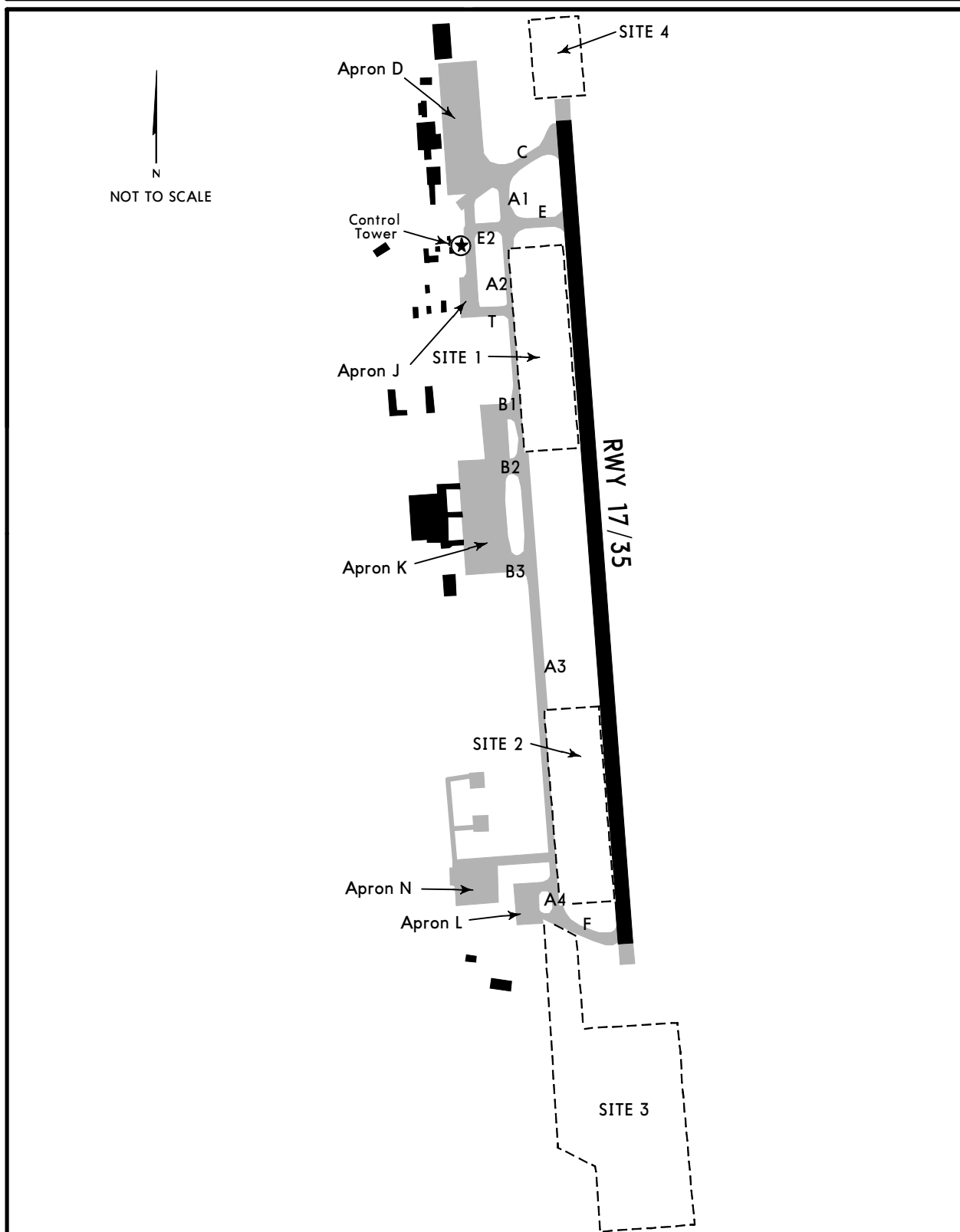
SID	ROUTING
KUKAD 1F	On runway heading to D6.0 PRT, turn LEFT (MAX 250 KT), 218° track, intercept PRT R248 (248° track) to KUKAD.
SARAX 1F	On runway heading to D6.0 PRT, turn LEFT, 190° track to intercept and follow PRT R248 (248° track) until D11.7 PRT, turn LEFT along D16.0 PRT Arc until PRT R200, turn RIGHT, intercept PRT R188 (188° track) (MAX 250 KT) to SARAX.
UDVAR 1F	On runway heading to D6.0 PRT, turn RIGHT, intercept PRT R355 (355° track) to UDVAR.

BKPR/PRN
 ADEM JASHARI



CONSTRUCTION WORKS ON AIRPORT AREA

REFER ALSO TO LATEST NOTAMS



SITE 1

Construction of the Rapid Exit Taxiway-RET1 (near TWY E).

SITE 2

Construction of the Rapid Exit Taxiway-RET2 (near TWY F).

SITE 3

Construction of the extended part of the parallel TWY (south of TWY A).

Construction of the extended part of the RWY (south of THR 35).

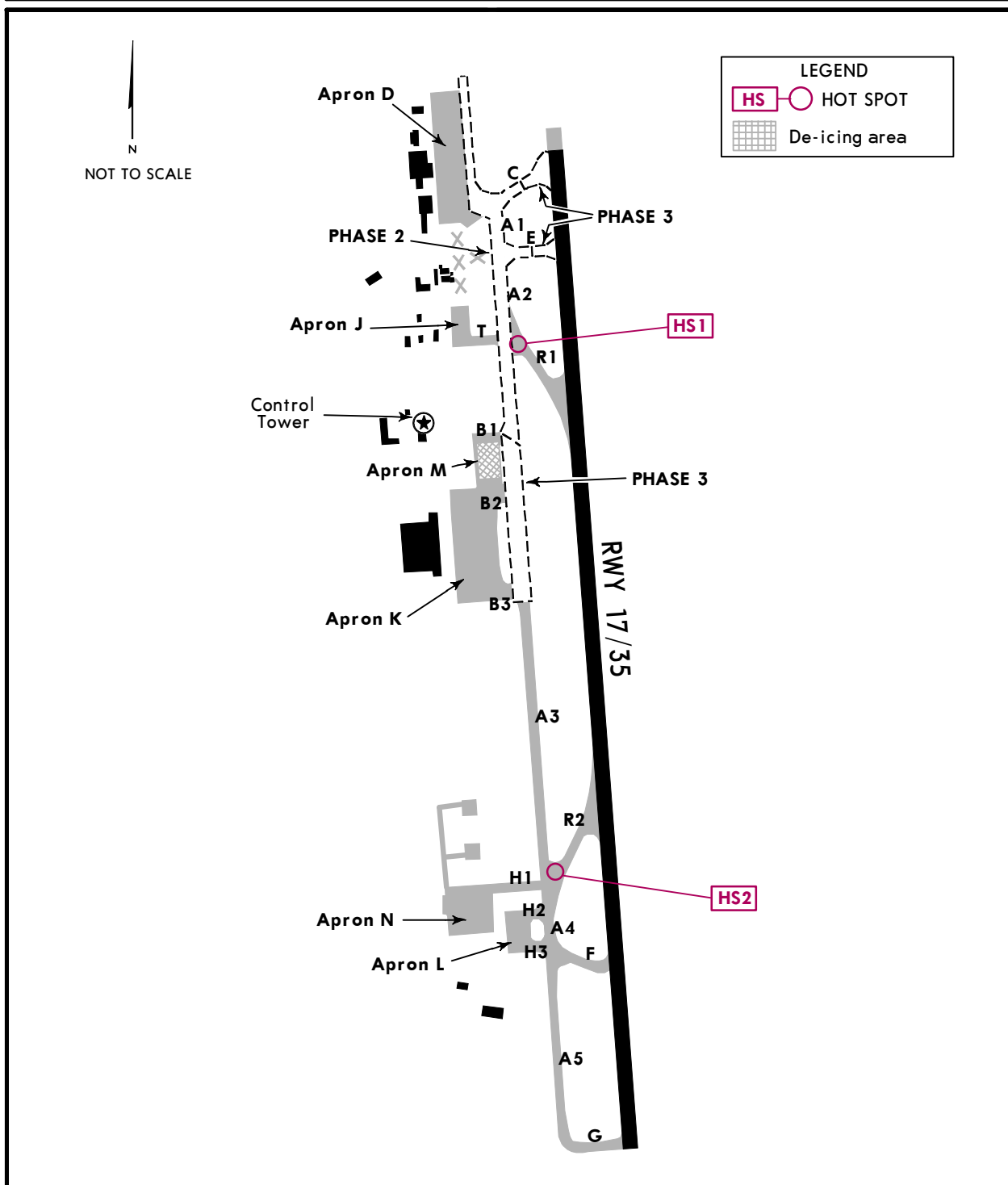
New connecting TWY for the extended TWY and RWY.

New RESA 35.

SITE 4

New RESA 17.

CONSTRUCTION WORKS ON TWYS
REFER ALSO TO LATEST NOTAMS



PHASE 2

Construction to include the shoulder area on TWY A3 (Rapid Exit Taxiway R1 to TWY B1, respectively TWY T to B1), shoulders of TWY C and E only western part, TWY A1 and TWY A2. In addition to this, in this phase Apron D will be also extended. Tactical closure will take place.

PHASE 3

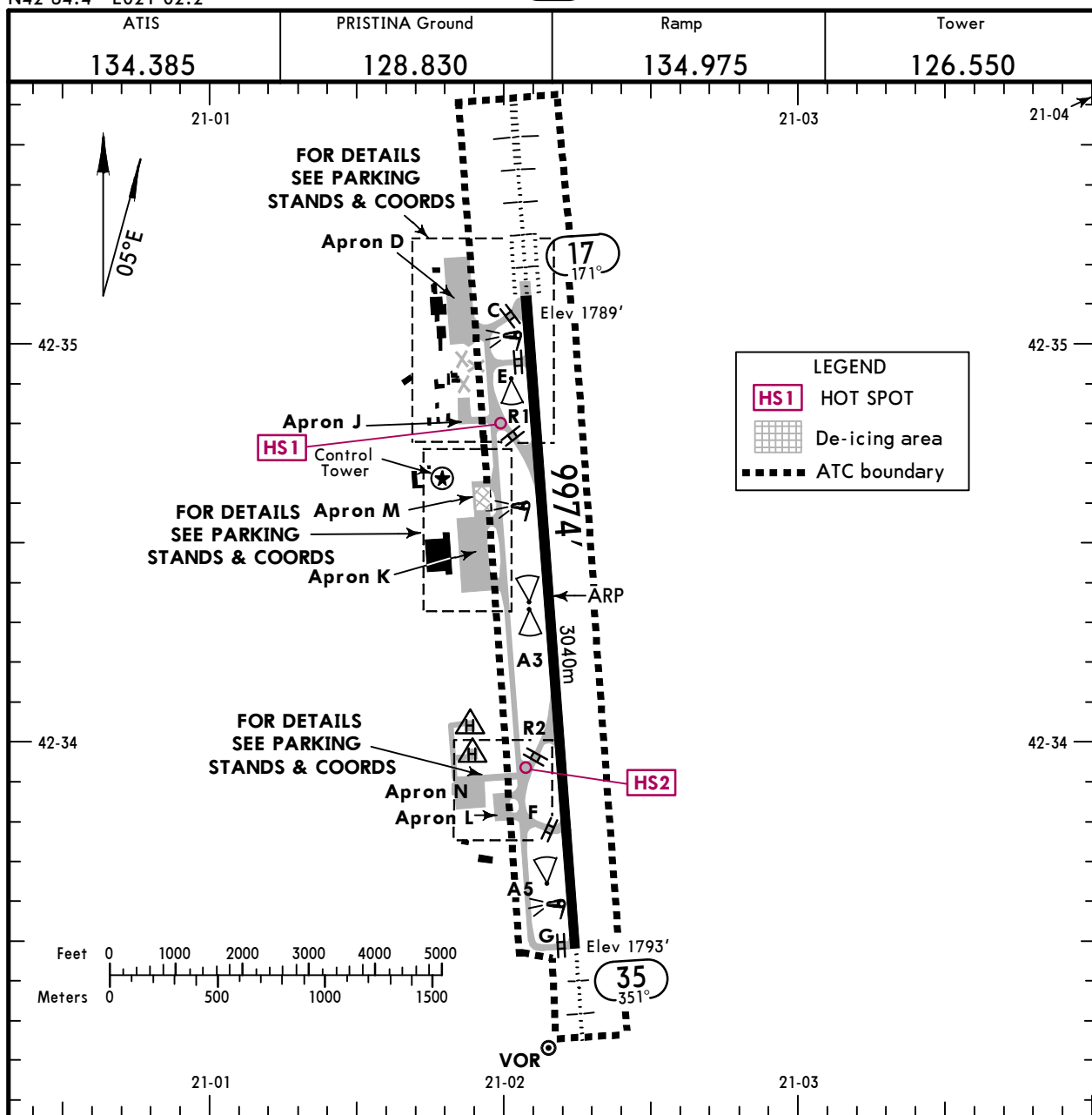
Construction will continue to the parts of TWY connecting to RWY (Temporary closure of RWY) and the east side of TWY A3 will follow when the first part will be completed (this phase will affect the intersections of TWY A3 with TWYs B1, B2, B3). Periodical closure will be applied.

The date and time of activation of each phase will be announced by NOTAMs.

BKPR/PRN
 Apt Elev **1793'**
 N42 34.4 E021 02.2

JEPPESEN
 2 DEC 22 **(10-9)**

PRISTINA, KOSOVO
 ADEM JASHARI



ADDITIONAL RUNWAY INFORMATION

RWY		USABLE LENGTHS			
		Threshold	Landing Beyond Glide Slope	TAKE-OFF	WIDTH
17	HIRL (60m) CL (15m) HIALS-II TDZ PAPI-L (3.0°) RVR		9002' 2744m	①	148' 45m
35	HIRL (60m) CL (15m) HIALS PAPI-L (3.5°) RVR		9063' 2762m		

① TAKE-OFF RUN AVAILABLE

RWY 17:		RWY 35:	
From rwy head	9974' (3040m)	From rwy head	9974' (3040m)
twy E int	9022' (2750m)	twy F int	8202' (2500m)

RUNWAY INCURSION HOT SPOTS

For information only, not to be construed as ATC instructions.

- HS1** Traffic on A2 and A3 taxiways can become conflicting with respect to traffic vacating runway by taxiway R1. When in doubt, hold short of intersection and await instructions by Tower.
- HS2** Traffic on A3, A4 and H2 taxiways can become conflicting with respect to traffic vacating runway by taxiway R2. When in doubt, hold short of intersection and await instructions by Tower.

Std TAKE-OFF

① HIRL & CL (spacing 15m or less) & relevant RVR	RL & CL & relevant RVR	RL & CL	RL & RCLM	RL or CL	RL or RCLM	Adequate Vis Ref		
			DAY	NIGHT	DAY	DAY	NIGHT	
TDZ R125m Mid R125m Rollout R125m	TDZ R150m Mid R150m Rollout R150m	R200m	R300m		R400m	R/V500m	NA	

① RWY 17: TDZ/Mid/Rollout R75m with approved lateral guidance system.

BKPR/PRN

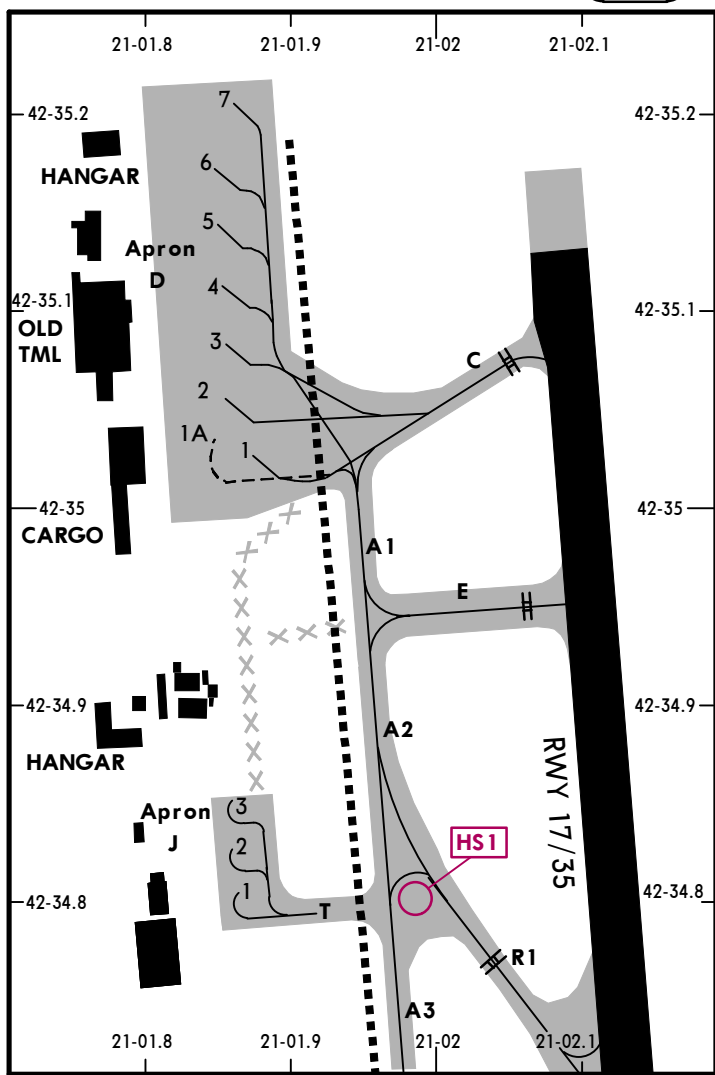
JEPPESEN

PRISTINA, KOSOVO

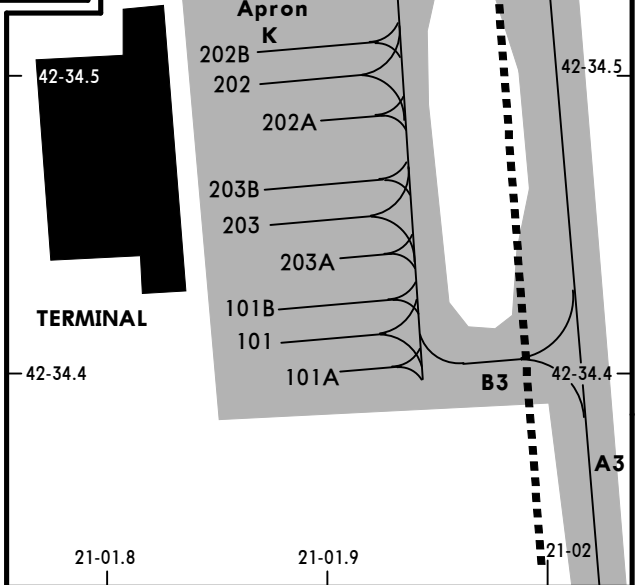
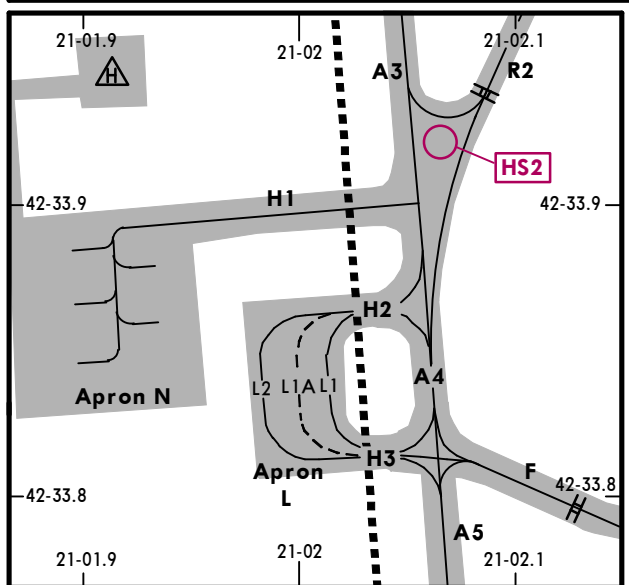
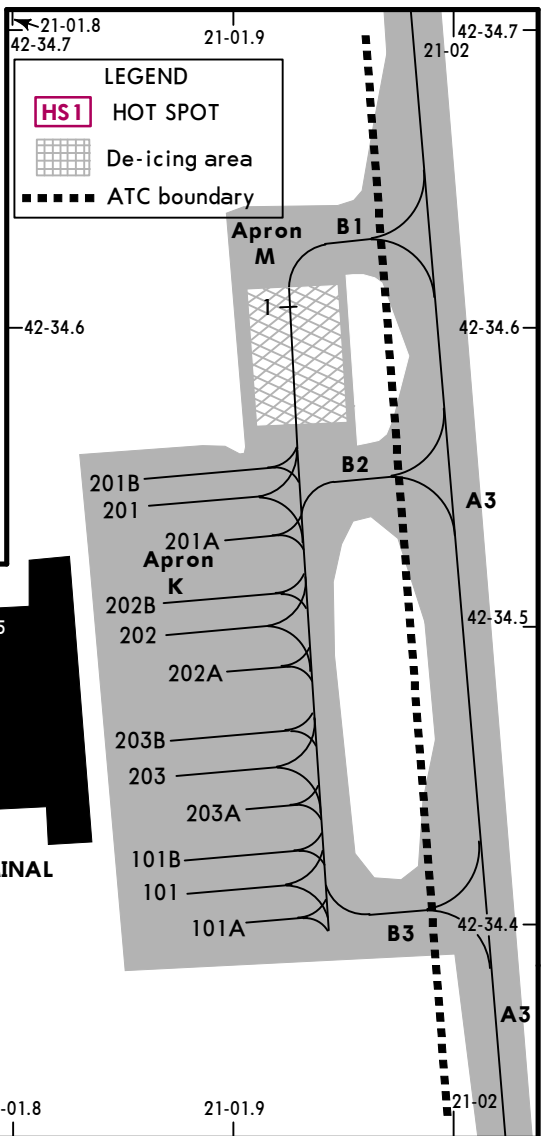
2 DEC 22

10-9A

ADEM JASHARI



INS COORDINATES	
STAND No.	COORDINATES
APRON D	
1, 1A	N42 35.0 E021 01.9
2 thru 5	N42 35.1 E021 01.8
6, 7	N42 35.2 E021 01.8
APRON J	
1, 2	N42 34.8 E021 01.9
3	N42 34.9 E021 01.9



INS COORDINATES			
STAND No.	COORDINATES	STAND No.	COORDINATES
APRON L		APRON K	
L1N thru L2S	N42 33.8 E021 02.0	101 thru 101B	N42 34.4 E021 01.9
APRON M		201, 201B	N42 34.5 E021 01.8
1	N42 34.6 E021 01.9	201A	N42 34.5 E021 01.9
		202 thru 202B	N42 34.5 E021 01.9
		203, 203B	N42 34.5 E021 01.9
		203A	N42 34.4 E021 01.9

BKPR/PRN

JEPPESEN

EASA AIR OPS

5 AUG 22

10-9S

Eff 11 Aug

PRISTINA, KOSOVO
ADEM JASHARI

STRAIGHT-IN RWY		A	B	C	D	
17	CAT 3B ILS Z or Y	R75m	R75m	R75m	R75m	
	CAT 3A ILS Z or Y	RA50' R200m	RA50' R200m	RA50' R200m	RA50' R200m	
	CAT 2 ILS Z or Y	1889' (100') RA103' R300m	1889' (100') RA103' R300m	1889' (100') RA103' R300m	1889' (100') RA103' ① R300m	
	CAT 1 ILS Z or Y FULL TDZ or CL out ALS out	1989' (200') R550m ② R550m R1200m	1989' (200') R550m ② R550m R1200m	1989' (200') R550m ② R550m R1200m	1989' (200') R550m ② R550m R1200m	
	③ LOC Z or Y ALS out	2200' (411') R1200m R1500m	2200' (411') R1200m R1500m	2200' (411') R1200m R1900m	2200' (411') R1200m R1900m	
	RNP LNAV/VNAV ALS out	2179' (390') R1100m R1500m	2189' (400') R1100m R1500m	2199' (410') R1200m R1900m	2209' (420') R1200m R1900m	
	③ RNP LNAV ALS out	2280' (491') R1500m R1500m	2280' (491') R1500m R1500m	2280' (491') R1500m R2300m	2280' (491') R1500m R2300m	
	③ VOR DME ALS out	2630' (837') R1500m R1500m	2630' (837') R1500m R1500m	2630' (837') R2400m R2400m	2630' (837') R2400m R2400m	
	35	④ ILS FULL ALS out	1993' (200') R750m R1200m	1993' (200') R750m R1200m	1993' (200') R750m R1200m	1993' (200') R750m R1200m
		⑤ ILS FULL ALS out	1993' (200') R750m R1200m	1993' (200') R750m R1200m	2003' (210') R750m R1200m	2013' (220') R800m R1200m
⑥ ILS FULL ALS out		1993' (200') R750m R1200m	2013' (220') R800m R1200m	2023' (230') R800m R1200m	2033' (240') R800m R1200m	
⑦ ILS FULL ALS out		2013' (220') R800m R1200m	2033' (240') R800m R1200m	2043' (250') R800m R1300m	2053' (260') R800m R1300m	
⑧ ILS FULL ALS out		2043' (250') R800m R1300m	2053' (260') R800m R1300m	2063' (270') R900m R1300m	2083' (290') R900m R1400m	
③ LOC ALS out		2160' (367') R1300m R1500m	2160' (367') R1300m R1500m	2160' (367') R1300m R1700m	2160' (367') R1300m R1700m	

- ① Without Autoland: R350m.
- ② R750m when a Flight Director or Autopilot or HUD to DA is not used.
- ③ Continuous Descent Final Approach.
- ④ Missed apch climb gradient mim 4.5%.
- ⑤ Missed apch climb gradient mim 4.0%.
- ⑥ Missed apch climb gradient mim 3.5%.
- ⑦ Missed apch climb gradient mim 3.0%.
- ⑧ Missed apch climb gradient mim 2.5%.

BKPR/PRN

JEPPESEN

EASA AIR OPS

5 AUG 22

10-9S1

Eff 11 Aug

PRISTINA, KOSOVO
ADEM JASHARI

STRAIGHT-IN RWY		A	B	C	D
35 (contd)	①RNP	2043'(250')	2053'(260')	2063'(270')	2073'(280')
	LNAV/VNAV	R800m	R800m	R900m	R900m
	ALS out	R1300m	R1300m	R1300m	R1300m
	②RNP	2063'(270')	2073'(280')	2103'(310')	2123'(330')
	LNAV/VNAV	R900m	R900m	R1000m	R1100m
	ALS out	R1300m	R1300m	R1400m	R1500m
	③RNP	2143'(350')	2163'(370')	2183'(390')	2203'(410')
LNAV/VNAV	R1200m	R1300m	R1400m	R1500m	
ALS out	R1500m	R1500m	R1800m	R1900m	
②④RNP	2160'(367')	2160'(367')	2160'(367')	2160'(367')	
LNAV	R1300m	R1300m	R1300m	R1300m	
ALS out	R1500m	R1500m	R1700m	R1700m	
③④RNP	2170'(377')	2200'(407')	2220'(427')	2240'(447')	
LNAV	R1300m	R1500m	R1600m	R1700m	
ALS out	R1500m	R1500m	R2000m	R2100m	
④ VOR DME	2200'(407')	2250'(457')	2280'(487')	2310'(517')	
	R1500m	R1500m	R1800m	R1900m	
ALS out	R1500m	R1500m	R2300m	R2400m	

- ① Missed apch climb gradient mim 3.5%.
- ② Missed apch climb gradient mim 3.0%.
- ③ Missed apch climb gradient mim 2.5%.
- ④ Continuous Descent Final Approach.

TAKE-OFF

Low Visibility Take-off					RL or RCLM	RL or CL	Adequate Vis Ref	
① HIRL & CL (spacing 15m or less) & relevant RVR	RL & CL & relevant RVR	RL & CL	RL & RCLM	RL or CL	DAY	NIGHT	DAY	NIGHT
			DAY	NIGHT				
TDZ R125m Mid R125m Rollout R125m	TDZ R150m Mid R150m Rollout R150m	R200m	R300m		R/V400m		R/V500m	NA

① RWY 17: R75m with approved lateral guidance system or HUD/HUDLS.

BKPR/PRN
ADEM JASHARI

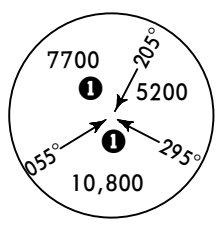
JEPPesen
2 DEC 22 (11-1)

PRISTINA, KOSOVO
ILS Z OR LOC Z Rwy 17

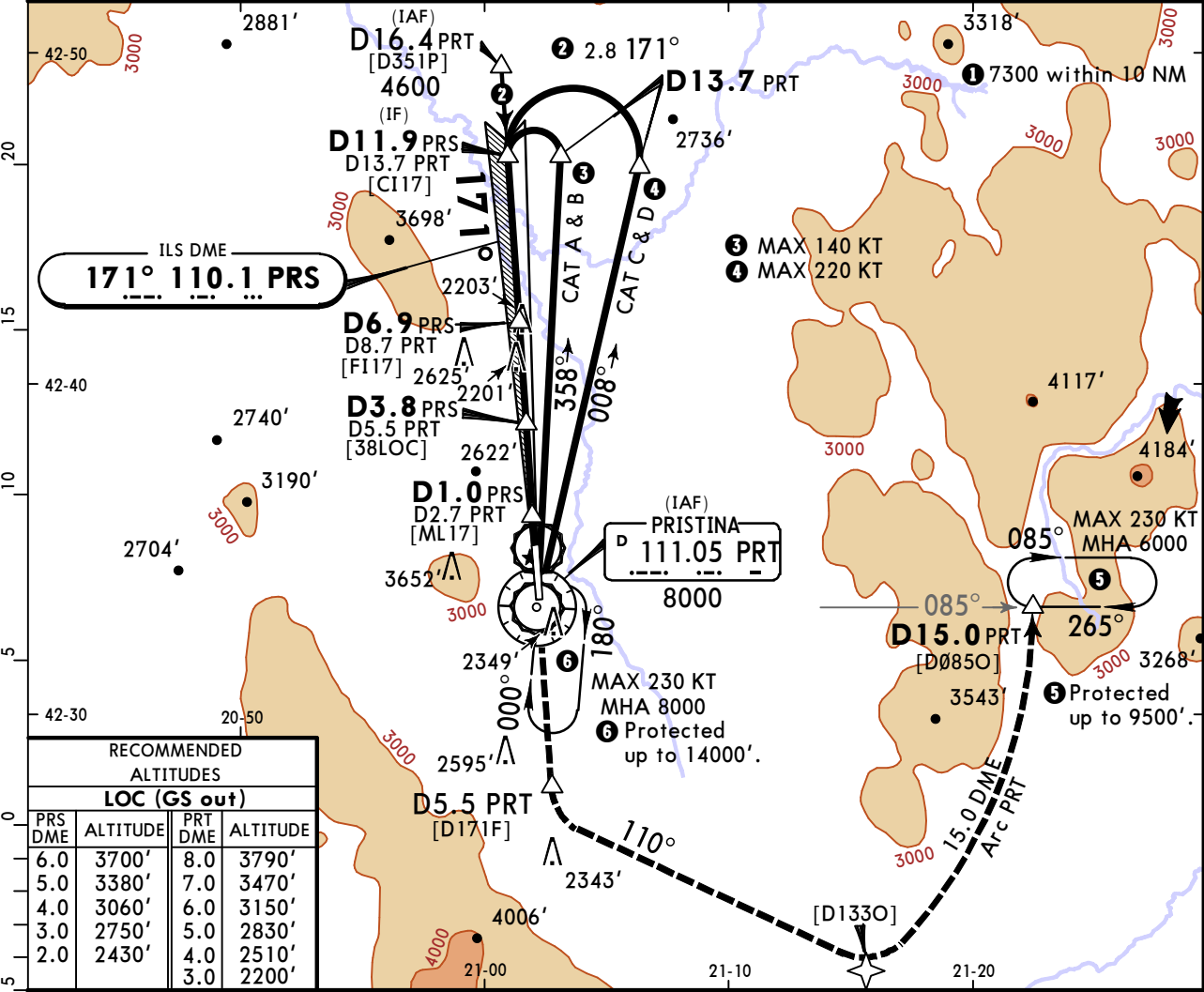
ATIS 134.385		PRISTINA Approach (R) 135.475 125.980		PRISTINA Tower 126.550	Ground 128.830
LOC PRS 110.1	Final Apch Crs 171°	D6.9 PRS MANDATORY 4000' (2211')		ILS DA(H) 1989' (200')	Apt Elev 1793' Rwy 1789'

MISSED APCH: Climb up to 6000' on Rwy heading. At D5.5 PRT, turn LEFT on 110° to intercept and follow 15.0 DME PRT Arc until holding (MAX 230 KT), then as directed.

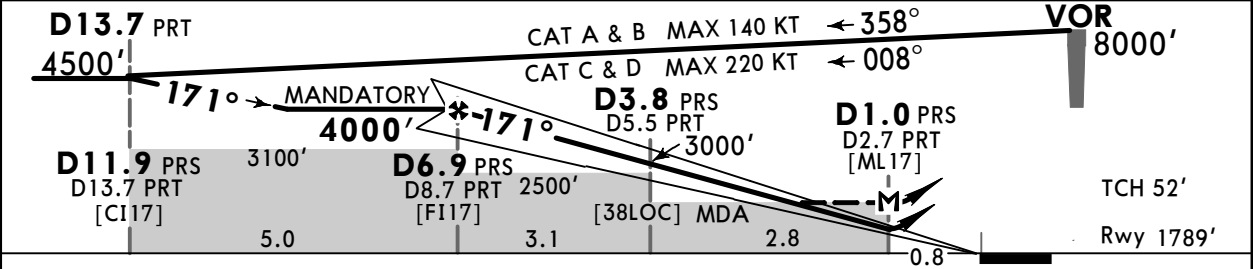
MSA PRT VOR



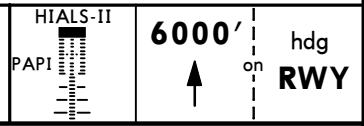
Alt Set: hPa Rwy Elev: 64 hPa Trans level: By ATC Trans alt: 13000'
VOR/DME required.



RECOMMENDED ALTITUDES			
LOC (GS out)			
PRS DME	ALTITUDE	PRT DME	ALTITUDE
6.0	3700'	8.0	3790'
5.0	3380'	7.0	3470'
4.0	3060'	6.0	3150'
3.0	2750'	5.0	2830'
2.0	2430'	4.0	2510'
		3.0	2200'



Gnd speed-Kts	70	90	100	120	140	160
GS	3.00°	372	478	531	637	743
MAP at D1.0 PRS/D2.7 PRT						
D6.9 PRS/D8.7 PRT to MAP	5.9	5:03	3:56	3:32	2:57	2:32



PANS OPS	Std ILS STRAIGHT-IN LANDING 2 LOC (GS out)			
	DA(H) 1989' (200')		DA/MDA(H) 2200' (411')	
	FULL	TDZ or CL out	ALS out	ALS out
	A			R1500m
B	R550m	R550m	R1200m	
C				R1900m
D				

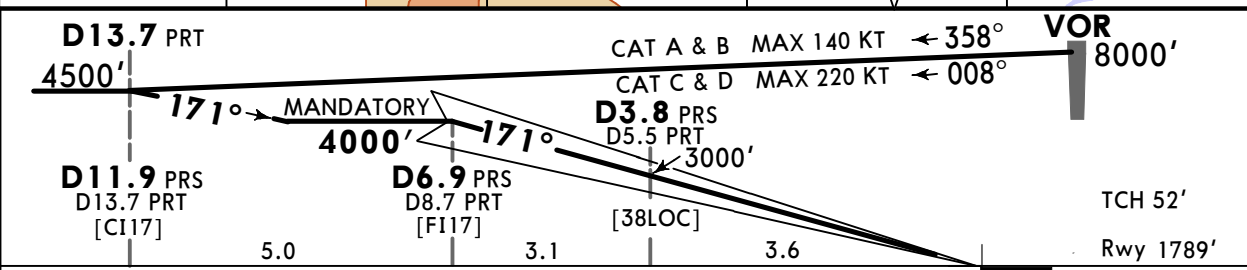
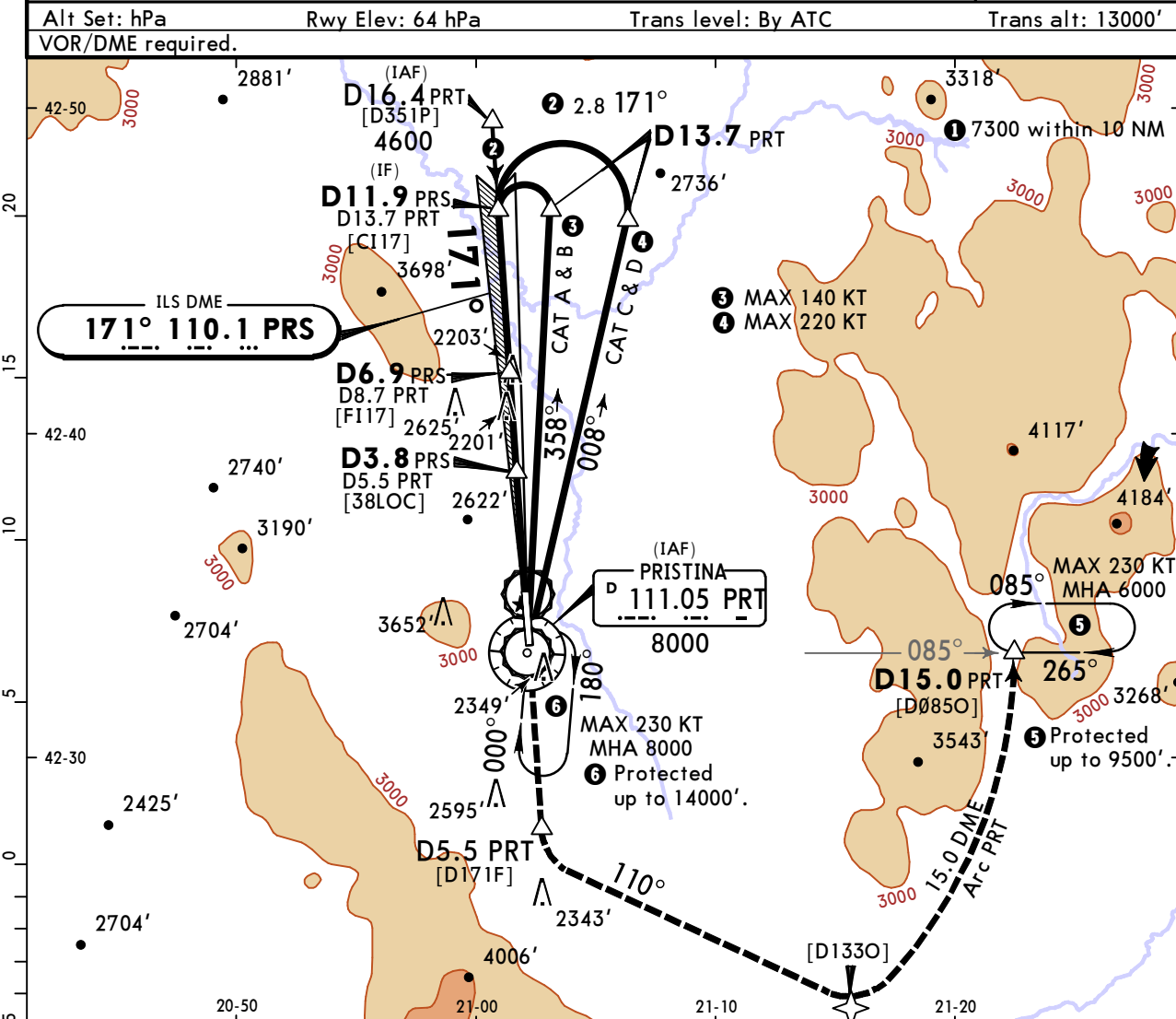
1 DL: DA(H) 1989' (200'). 2 DL: DA/MDA(H) 2200' (411'). 3 R750m when a Flight Director or Autopilot HUD to DA is not used. 4 CDFA 5 VNAV DA(H) in lieu of MDA(H) depends on operator policy.

BKPR/PRN
ADEM JASHARI

JEPPesen
2 DEC 22 **(11-1A)**

PRISTINA, KOSOVO
CAT II/III ILS **Z** Rwy 17

ATIS 134.385		PRISTINA Approach (R) 135.475 125.980		PRISTINA Tower 126.550	Ground 128.830
LOC PRS 110.1	Final Apch Crs 171°	D6.9 PRS MANDATORY 4000' (2211')	CAT IIIB, IIIA & II ILS Refer to Minimums		Apt Elev 1793' Rwy 1789'
MISSED APCH: Climb up to 6000' on Rwy heading. At D5.5 PRT, turn LEFT on 110° to intercept and follow 15.0 DME PRT Arc until holding (MAX 230 KT), then as directed.					<p>MSA PRT VOR</p>
Alt Set: hPa		Rwy Elev: 64 hPa	Trans level: By ATC		Trans alt: 13000'



Gnd speed-Kts	70	90	100	120	140	160	HIALS-II PAPI 	6000' hdg ↑ on RWY
GS	3.00°	372	478	531	637	743		

Std STRAIGHT-IN LANDING		
CAT IIIB ILS	CAT IIIA ILS	1 CAT II ILS RA 103' DA(H) 1889'(100')
R75m	R175m	2 R300m

1 D_L: DA(H) 1889'(100'). **2** CAT D without autoland: R350m.

BKPR/PRN
ADEM JASHARI

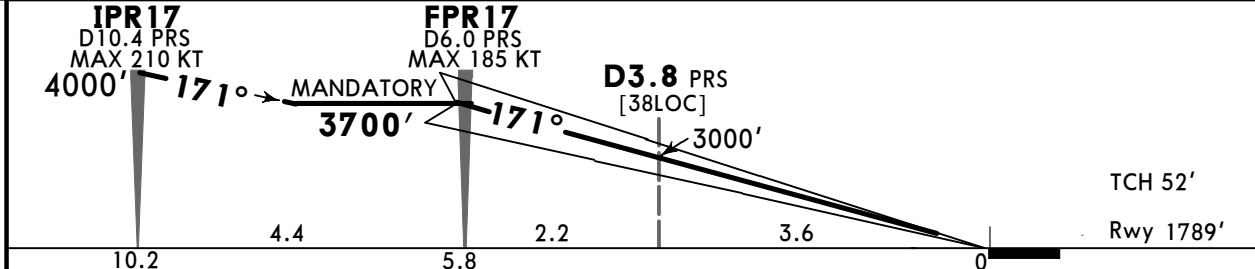
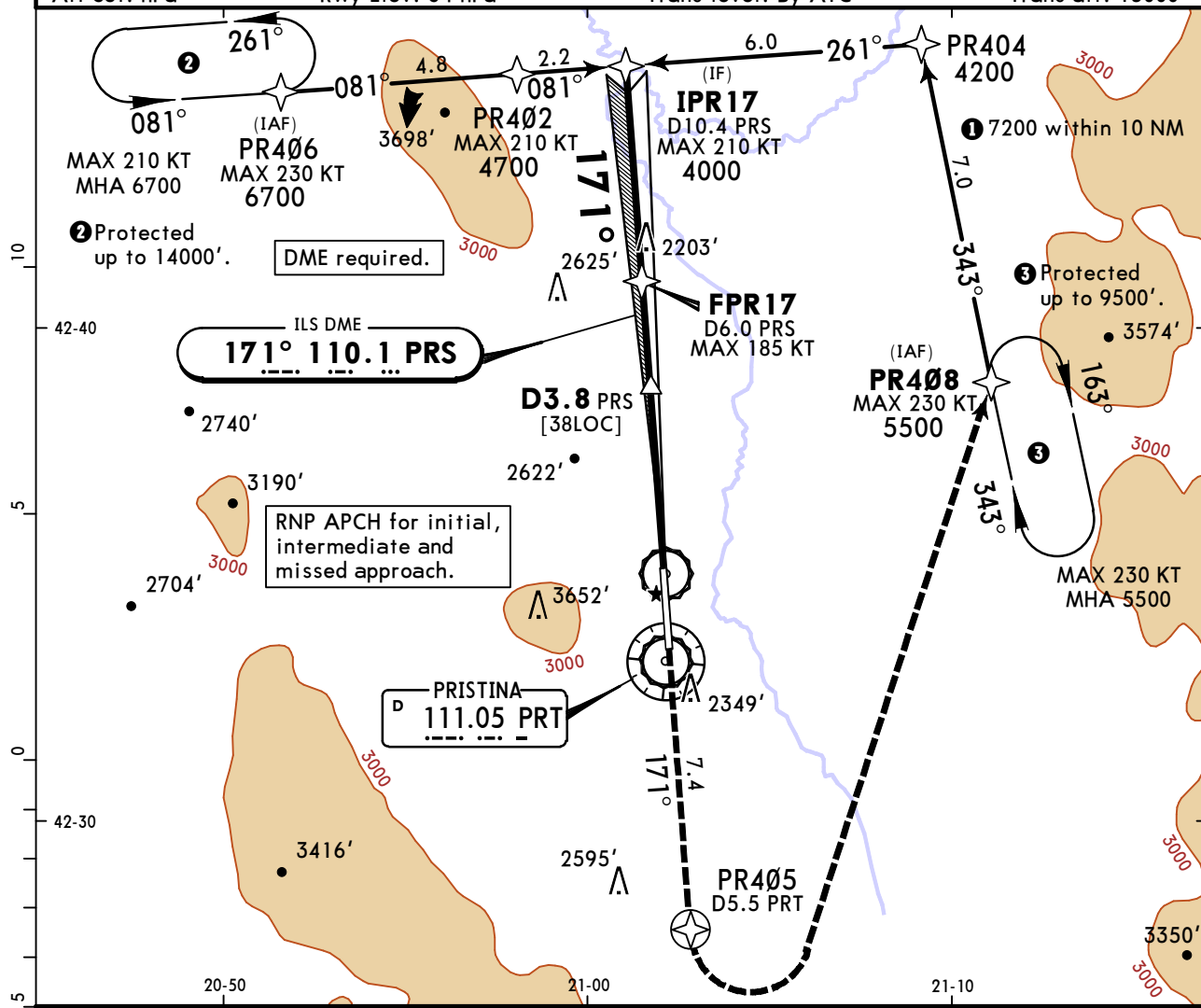
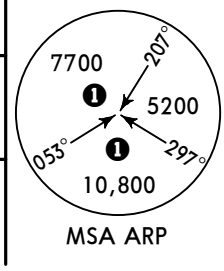
JEPPesen
2 DEC 22 **(11-2A)**

PRISTINA, KOSOVO
CAT II/III ILS Y Rwy 17

ATIS 134.385		PRISTINA Approach (R) 135.475 125.980		PRISTINA Tower 126.550	Ground 128.830
LOC PRS 110.1	Final Apch Crs 171°	FPR17 MANDATORY 3700' (1911')	CAT IIIB, IIIA & II ILS Refer to Minimums	Apt Elev 1793' Rwy 1789'	

MISSED APCH: Climb to 5500' to PR405 on course 171°. At PR405, turn LEFT (MAX 230 KT) direct to PR408. At PR408, hold and follow ATC instructions. If unable to reach 5500' at PR408, continue to climb in the holding.

Alt Set: hPa Rwy Elev: 64 hPa Trans level: By ATC Trans alt: 13000'



Gnd speed-Kts	70	90	100	120	140	160	HIALS-II PAPI 	5500' ↑ on 171° PR405
GS	3.00°	372	478	531	637	849		

Std STRAIGHT-IN LANDING		
CAT IIIB ILS	CAT IIIA ILS	CAT II ILS RA 103' DA(H) 1889'(100')

R75m	R175m	R300m
------	-------	-------

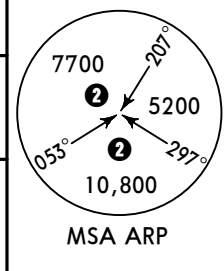
1 DL: DA(H) 1889'(100'). 2 CAT D without autoland: R350m.

BKPR/PRN
ADEM JASHARI

JEPPESSEN
2 DEC 22 (11-3)

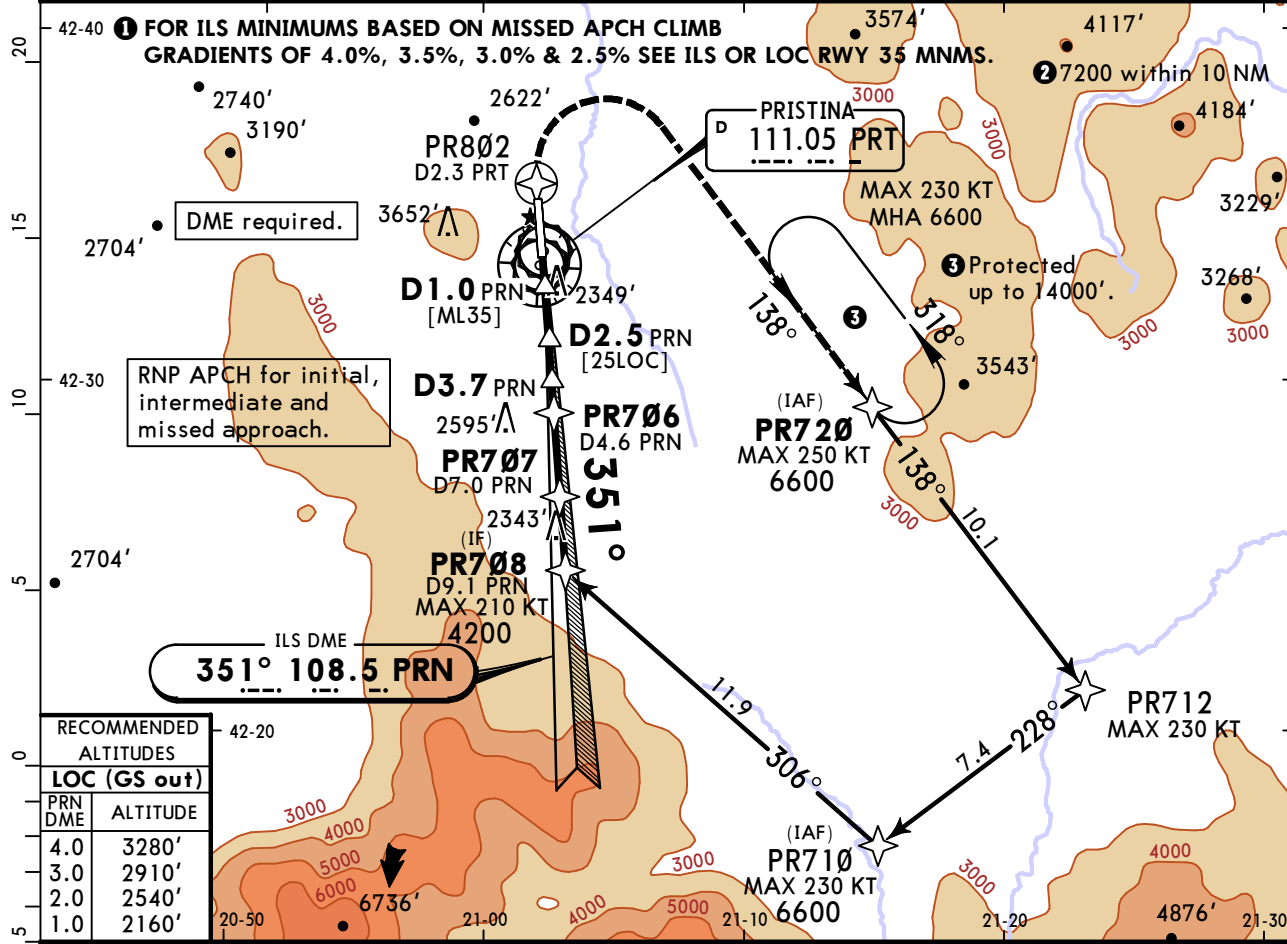
PRISTINA, KOSOVO
● ILS OR LOC Rwy 35

ATIS 134.385	PRISTINA Approach (R) 135.475 125.980	PRISTINA Tower 126.550	Ground 128.830
LOC PRN 108.5	Final Apch Crs 351°	PR706 MANDATORY 3500' (1707')	ILS DA(H) 1993' (200')
Apt Elev 1793'			Rwy 1793'

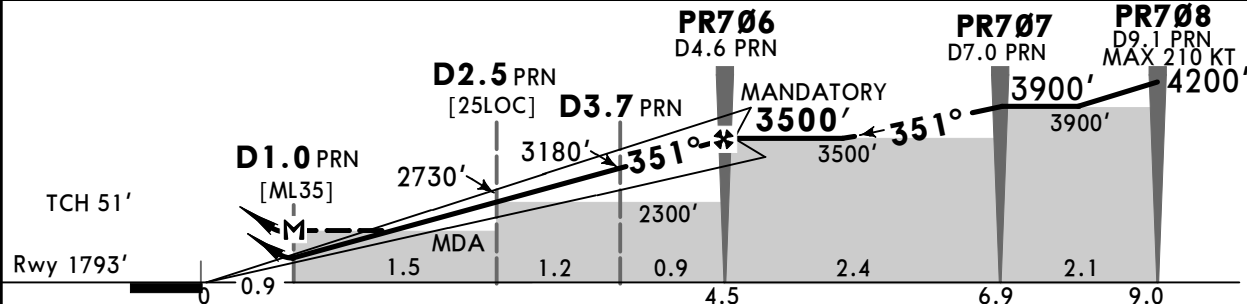


MISSED APCH: Climb up to 6600' on course 351°. At PR802, turn RIGHT (MAX 230 KT) direct to PR720. At PR720, hold and follow ATC instructions. If unable to reach 6600' at PR720, continue to climb in the holding. Refer to minimums for missed apch climb gradients.

Alt Set: hPa Rwy Elev: 64 hPa Trans level: By ATC Trans alt: 13000'



RECOMMENDED ALTITUDES	
LOC (GS out)	
PRN DME	ALTITUDE
4.0	3280'
3.0	2910'
2.0	2540'
1.0	2160'



Gnd speed-Kts	70	90	100	120	140	160
GS	3.50°	434	557	619	743	867
MAP at D1.0 PRN						
PR706 to MAP	3.6	3:05	2:24	2:10	1:48	1:33

HIALS
PAPI
6600' on **351°**

Std ILS STRAIGHT-IN LANDING		2 LOC (GS out) CDFA	
Missed apch climb gradient mim 4.5%		3 DA/MDA(H) 2160' (367')	
DA(H) 1993' (200')			
FULL	ALS out		ALS out
A			R1500m
B	R750m	R1200m	
C		R1300m	R1700m
D			

1 DL: DA(H) 1993' (200'). 2 DL: DA/MDA(H) 2160' (367').
3 VNAV DA(H) in lieu of MDA(H) depends on operator policy.

BKPR/PRN
ADEM JASHARI

JEPPESEN
2 DEC 22 **11-3A**

PRISTINA, KOSOVO

ILS or LOC Rwy 35 MINIMUMS

BASED ON:

MISSED APCH CLIMB GRADIENT MIN 4.0%

Std		STRAIGHT-IN LANDING	
		1 ILS	
DA(H)		A: 1993' (200')	C: 2003' (210')
		B: 2013' (220')	D: 2013' (220')
		FULL	ALS out
A	R750m		R1200m
B			
C			
D	R800m		
1 DL : DA(H) 2013' (220').			

MISSED APCH CLIMB GRADIENT MIN 3.5%

Std		STRAIGHT-IN LANDING	
		2 ILS	
DA(H)		A: 1993' (200')	C: 2023' (230')
		B: 2013' (220')	D: 2033' (240')
		FULL	ALS out
A	R750m	R1200m	
B	R800m		
C			
D			
2 DL : DA(H) 2033' (240').			

MISSED APCH CLIMB GRADIENT MIN 3.0%

Std		STRAIGHT-IN LANDING	
		3 ILS	
DA(H)		A: 2013' (220')	C: 2043' (250')
		B: 2033' (240')	D: 2053' (260')
		FULL	ALS out
A	R800m	R1200m	
B			
C		R1300m	
D			
3 DL : DA(H) 2053' (260').			

MISSED APCH CLIMB GRADIENT MIN 2.5%

Std		STRAIGHT-IN LANDING	
		4 ILS	
DA(H)		A: 2043' (250')	C: 2063' (270')
		B: 2053' (260')	D: 2083' (290')
		FULL	ALS out
A	R800m	R1300m	
B			
C	R900m	R1400m	
D			
4 DL : DA(H) 2083' (290').			

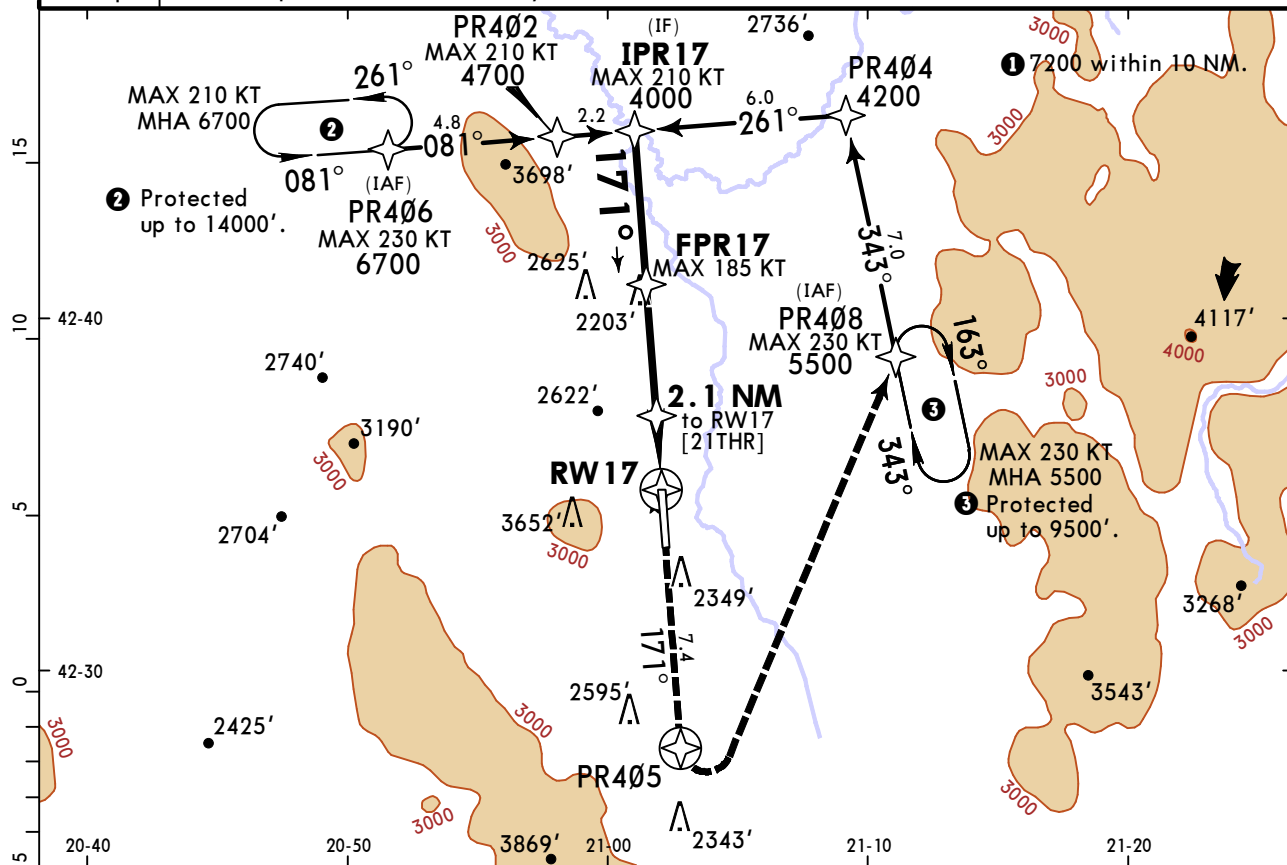
BKPR/PRN
ADEM JASHARI

JEPPESSEN
2 DEC 22 (12-1)

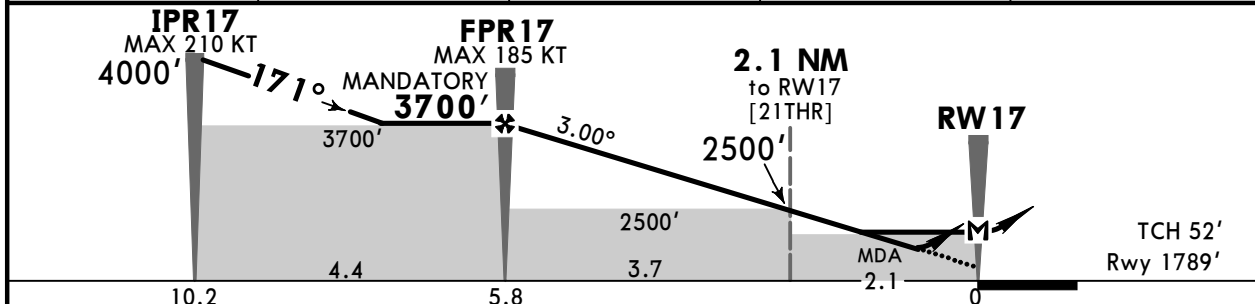
PRISTINA, KOSOVO
RNP Rwy 17

ATIS 134.385		PRISTINA Approach (R) 135.475 125.980		PRISTINA Tower 126.550	Ground 128.830	<p>MSA ARP</p>
RNAV	Final Apch Crs 171°	FPR17 MANDATORY 3700' (1911')	RNAV/VNAV DA(H) Refer to Minimums	Apt Elev 1793' Rwy 1789'		
<p>MISSED APCH: Climb on course 171° to 5500'. At PR405, turn LEFT (MAX 230 KT) direct to PR408. At PR408, hold and follow ATC instructions. If unable to reach 5500' at PR408, continue to climb in the holding.</p>						

Alt Set: hPa Rwy Elev: 64 hPa Trans level: By ATC Trans alt: 13000'
RNP Apch For uncompensated Baro-VNAV systems: Baro-VNAV not authorized below -3°C and above 57°C.



DIST to RW17	5.0	4.0	3.0	2.0
ALTITUDE	3430'	3120'	2800'	2480'



Gnd speed-Kts	70	90	100	120	140	160	
Glide Path Angle	3.00°	372	478	531	637	743	
MAP at RW17							
FPR17 to MAP	5.8	4:58	3:52	3:29	2:54	2:29	2:10

Std		STRAIGHT-IN LANDING			
LNAV/VNAV DA(H)		A: 2179' (390') C: 2199' (410')		LNAV CDFA	
		B: 2189' (400') D: 2209' (420')		DA/MDA(H) 2280' (491')	
		ALS out		ALS out	

A	R1100m	R1500m	R1500m
B			
C	R1200m	R1900m	R1500m
D			R2300m

1 VNAV DA(H) in lieu of MDA(H) depends on operator policy.
CHANGES: ATIS frequency. © JEPPESSEN, 2022. ALL RIGHTS RESERVED.

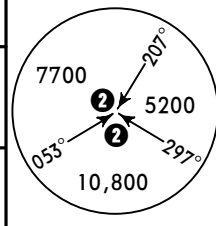
BKPR/PRN
ADEM JASHARI

JEPPESSEN
2 DEC 22 (12-2)

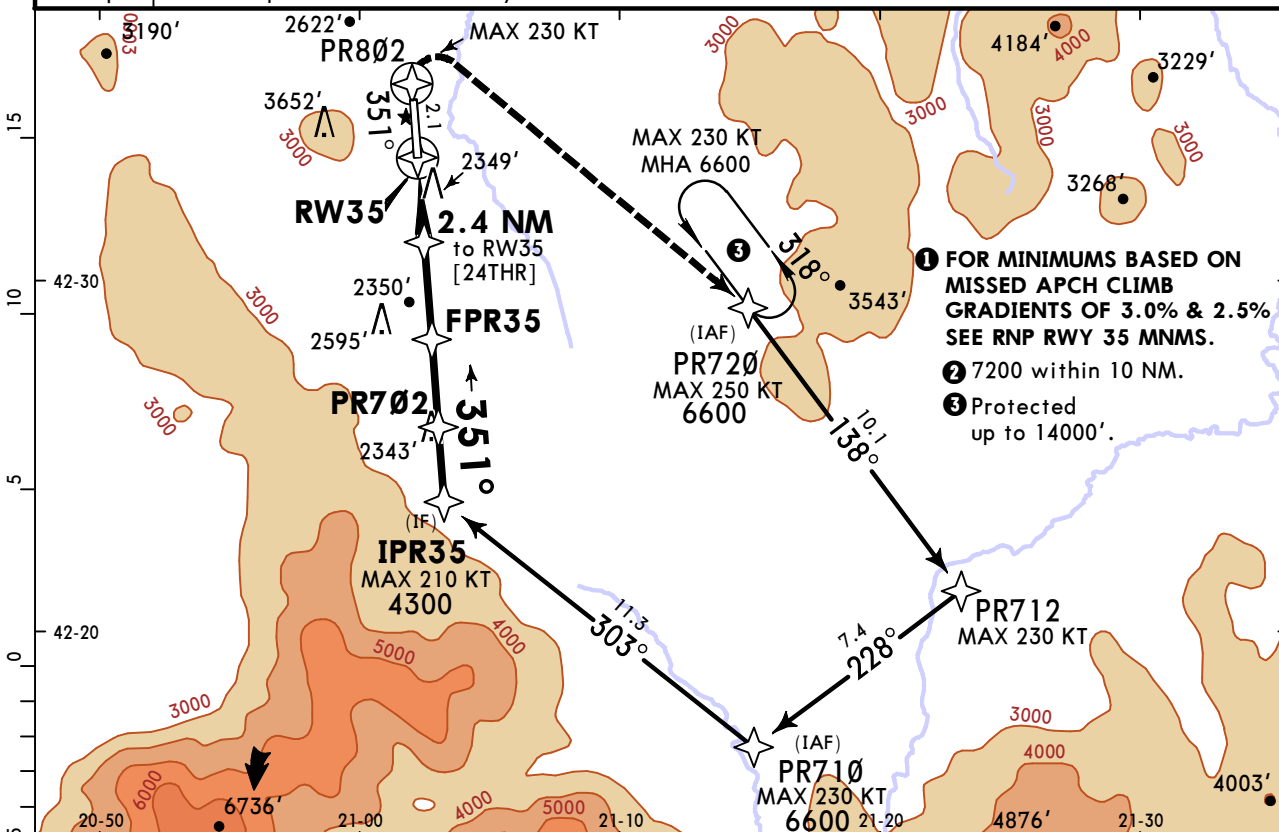
PRISTINA, KOSOVO
RNP Rwy 35

ATIS 134.385	PRISTINA Approach (R) 135.475 125.980	PRISTINA Tower 126.550	Ground 128.830
RNAV	Final Apch Crs 351°	FPR35 MANDATORY 3500' (1707')	LNNAV/VNAV DA(H) Refer to Minimums Apt Elev 1793' Rwy 1793'

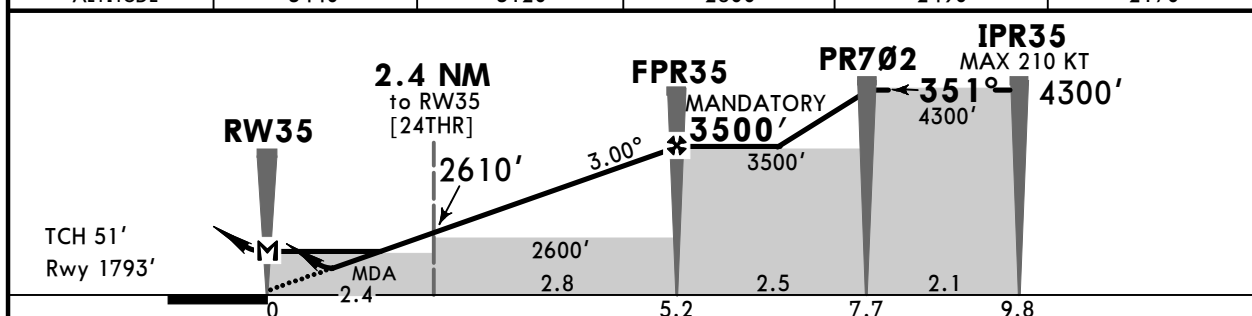
MISSED APCH: Climb on course 351° to 6600'. At PR802, turn RIGHT (MAX 230 KT) direct to PR720. At PR720, hold and follow ATC instructions. If unable to reach 6600' at PR720, continue to climb in the holding. Refer to minimums for missed apch climb gradients.



Alt Set: hPa Rwy Elev: 64 hPa Trans level: By ATC Trans alt: 13000'
RNP Apch For uncompensated Baro-VNAV systems: Baro-VNAV not authorized below -4°C and above 57°C.



DIST to RW35	5.0	4.0	3.0	2.0	1.0
ALTITUDE	3440'	3120'	2800'	2490'	2170'



Gnd speed-Kts	70	90	100	120	140	160	HIALS PAPI 6600' on 351°
Glide Path Angle 3.00°	372	478	531	637	743	849	
MAP at RW35							
FPR35 to MAP	5.2	4:27	3:28	3:07	2:36	2:14	1:57

PANS OPS	Std	STRAIGHT-IN LANDING	
		1 LNNAV/VNAV Missed apch climb gradient mim 3.5% DA(H) A: 2043'(250') C: 2063'(270') B: 2053'(260') D: 2073'(280')	2 LNNAV CDFA Missed apch climb gradient mim 3.0% 3 DA/MDA(H) 2160'(367')
		ALS out	ALS out
	A	R800m	R1500m
B	R1300m	R1300m	R1700m
C			R900m
D			

1 DL: DA(H) 2073'(280'). **2** DL: DA/MDA(H) 2160'(367').
3 VNAV DA(H) in lieu of MDA(H) depends on operator policy.
CHANGES: ATIS frequency. © JEPPESSEN, 2022. ALL RIGHTS RESERVED.

RNP Rwy 35 MINIMUMS

BASED ON:

MISSED APCH CLIMB GRADIENT MIN 3.0%

Std		STRAIGHT-IN LANDING 1 LNAV/VNAV	
DA(H)		A: 2063' (270')	C: 2103' (310')
		B: 2073' (280')	D: 2123' (330')
		ALS out	
A	R900m	R1300m	
B			
C	R1000m	R1400m	
D	R1100m	R1500m	
1 DL: DA(H) 2123' (330').			

MISSED APCH CLIMB GRADIENT MIN 2.5%

Std		STRAIGHT-IN LANDING 2 LNAV/VNAV	
DA(H)		A: 2143' (350')	C: 2183' (390')
		B: 2163' (370')	D: 2203' (410')
		ALS out	
A	R1200m	R1500m	
B	R1300m		
C	R1400m	R1800m	
D	R1500m	R1900m	
2 DL: DA(H) 2203' (410').			

Std		STRAIGHT-IN LANDING 3 LNAV CDFA	
4 DA/MDA(H)		A: 2170' (377')	C: 2220' (427')
		B: 2200' (407')	D: 2240' (447')
		ALS out	
A	R1300m	R1500m	
B	R1500m		
C	R1600m	R2000m	
D	R1700m	R2100m	
3 DL: DA/MDA(H) 2240' (447').			
4 VNAV DA(H) in lieu of MDA(H) depends on operator policy.			

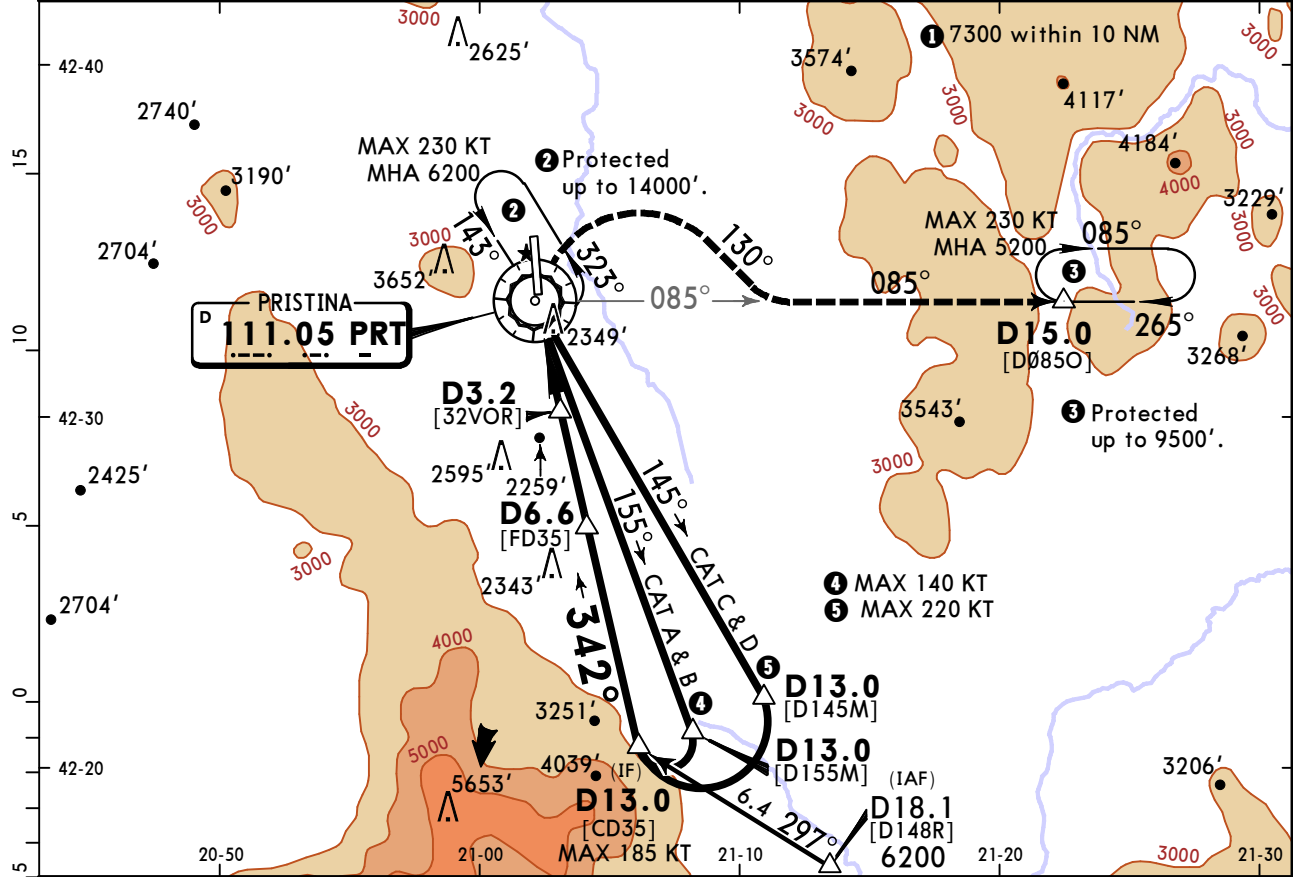
BKPR/PRN
ADEM JASHARI

JEPPesen
2 DEC 22 (13-2)

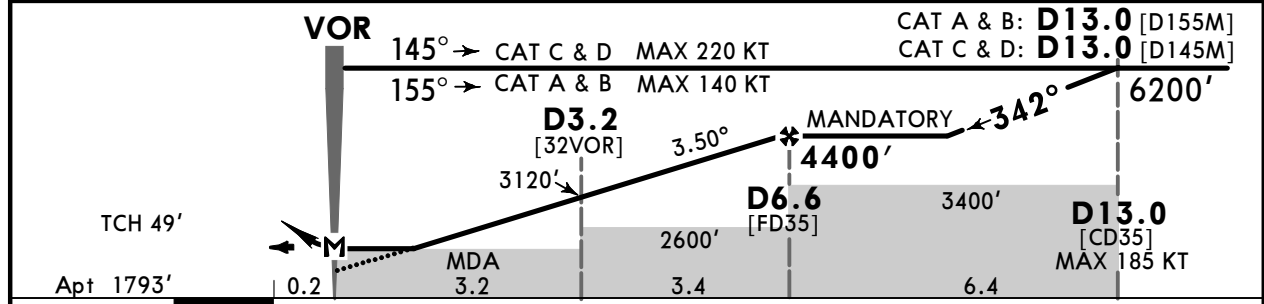
PRISTINA, KOSOVO
VOR DME Rwy 35

ATIS 134.385		PRISTINA Approach (R) 135.475 125.980		PRISTINA Tower 126.550	Ground 128.830
VOR PRT 111.05	Final Apch Crs 342°	D6.6 MANDATORY 4400' (2607')	DA/MDA(H) Refer to Minimums	Apt Elev 1793'	
MISSED APCH: At VOR turn RIGHT (MAX 230 KT) on 130° climbing 5200' to follow PRT VOR R-085 until holding. In the holding as directed. If unable to reach 5200' at holding point, continue climbing in the holding pattern.					<p>MSA PRT VOR</p>

Alt Set: hPa Apt Elev: 64 hPa Trans level: By ATC Trans alt: 13000'
1. DME required. 2. Final apch track offset 8.7° from Rwy centerline.



PRT DME	1.0	2.0	3.0	4.0	5.0	6.0
ALTITUDE	2300'	2680'	3050'	3420'	3790'	4160'



Gnd speed-Kts	70	90	100	120	140	160	HIALS PAPI Refer to Missed apch above
Descent Angle	3.50°	434	557	619	743	867	
MAP at VOR	6.6	5:39	4:24	3:58	3:18	2:50	

Std		STRAIGHT-IN LANDING	
		CDFA	
DA/MDA(H)		A: 2200'(407')	B: 2250'(457')
		C: 2280'(487')	D: 2310'(517')
		ALS out	
A	R1500m		
B			
C	R1800m	R2300m	
D	R1900m	R2400m	
VNAV DA(H) in lieu of MDA(H) depends on operator policy.			

Chart changes since cycle 15-2023

ADD = added chart, REV = revised chart, DEL = deleted chart.

ACT	PROCEDURE IDENT	INDEX	REV DATE	EFF DATE
PRISTINA, (ADEM JASHARI - BKPR)				

TERMINAL CHART CHANGE NOTICES

Chart Change Notices for Airport BKPR

Type: Terminal

Effectivity: Temporary

Begin Date: 20190628

End Date: Until Further Notice

Construction works in progress (based on SUP 01/2019).For details refer to temp chart 10-8 and latest NOTAMs.

Type: Terminal

Effectivity: Temporary

Begin Date: 20220923

End Date: Until Further Notice

Based on AIP SUP 002/22, construction works on TWYs A1, A2, A3, C and E. Refer to temporary chart 10-8A and latest NOTAMs.