

## List of pages in this Trip Kit

Trip Kit Index

Airport Information For EYPA

Terminal Charts For EYPA

Revision Letter For Cycle 16-2023

Change Notices

Notebook

## General Information

Location: PALANGA LTU  
ICAO/IATA: EYPA / PLQ  
Lat/Long: N55° 58.38', E021° 05.63'  
Elevation: 33 ft

Airport Use: Public  
Daylight Savings: Observed  
UTC Conversion: -2:00 = UTC  
Magnetic Variation: 6.0° E

Fuel Types: 100 Octane (LL), Jet A-1  
Customs: Yes  
Airport Type: IFR  
Landing Fee: Yes  
Control Tower: Yes  
Jet Start Unit: No  
LLWS Alert: No  
Beacon: No

Sunrise: 0613 Z  
Sunset: 1428 Z

## Runway Information

Runway: 01  
Length x Width: 7480 ft x 148 ft  
Surface Type: asphalt  
TDZ-Elev: 33 ft  
Lighting: Edge, ALS, Centerline  
Displaced Threshold: 492 ft

Runway: 19  
Length x Width: 7480 ft x 148 ft  
Surface Type: asphalt  
TDZ-Elev: 32 ft  
Lighting: Edge, ALS, Centerline  
Displaced Threshold: 492 ft

## Communication Information

ATIS: 127.805  
Palanga Tower: 118.305 Secondary VHF-DF  
Palanga Tower: 124.305 VHF-DF  
Palanga Information: 125.730 Flight Info Service RCO

---

## 1. GENERAL

---

### 1.1. ATIS

ATIS 127.805

### 1.2. NOISE ABATEMENT PROCEDURES

Noise abatement procedures should be applied according to ICAO Doc 8168, Volume 1, Chapter 7.

These regulations establish limitation of operation of civil subsonic jet aeroplanes (hereinafter - aeroplanes) to and from the APTs of the Republic of Lithuania.

1. These regulations are applied to the aeroplanes with a MTOM of 34000kg or more and with a certified maximum internal accommodation for the aeroplanes type in question consisting of more than nineteen passenger seats, excluding any seats for crew.
2. Aeroplanes can operate to and from the APTs of the Republic of Lithuania only if they meet the standards of Chapter 3, Part II, Volume I of Annex 16 to the Convention on International Civil Aviation (second edition, 1988).
3. Lithuanian Transport Safety Administration (LTSA) has the right to exempt aeroplanes of historical significance from applying the requirements of item 2 of these regulations.
4. In exceptional cases the LTSA may temporarily allow operation of an aeroplane that does not meet the requirements of item 2 of these regulations, at APTs of the Republic of Lithuania, if:
  - operation of an aeroplane is so significant that it would be unjustifiable to decline to grant a temporary exemption;
  - an aeroplane performs a non-commercial flight related with its repair, maintenance and modification.

### 1.3. LOW VISIBILITY PROCEDURES (LVP)

LVP are established for take-off only when RVR value limitation is from 350m till 250m.

The status of LVP is passed to pilots by means of ATIS broadcast or RTF: "Low Visibility Take-off Procedures are in force".

In conditions where LVP are in operation:

- only one ACFT can be present on maneuvering area of an aerodrome, when necessary, accompanied by ACFT Follow-me vehicle, and, in case of emergency, by emergency vehicles proceeding to the assistance of the ACFT in distress.
- other vehicles except the indicated above, are allowed to occupy the maneuvering area only when there is no ACFT on it.

LVP is cancelled when RVR is 450m with increasing tendency.

### 1.4. TAXI PROCEDURES

For wingspan restrictions refer to 10-9 charts.

180° turn on RWY for ACFT CAT C and D are allowed only in designated areas at ends of RWY.

ACFT movement to parking stands will be guided by marshallers.

Taxiing to stands 1 and 2 is possible via stand 1 from TWY C only.

Taxiing to stands 3 thru 7 is possible via next free stand, parking direction must be to the West only.

Taxiing to stand 8 is performed only from TWY D, parking direction must be to the South.

ATC clearance shall be issued before departing ACFT is leaving standing position or during taxiing to holding point.

Taxiing to stands 9 thru 15 along the guide line, parking direction must be to the west only.

EYPA/PLQ  
PALANGA INTL

JEPPESEN

7 JUL 23

10-1P1

Eff 13 Jul

PALANGA, LITHUANIA  
AIRPORT BRIEFING

---

## 1. GENERAL

---

### 1.5. PARKING INFORMATION

Stands 1 thru 7 are used for helicopters.

### 1.6. OTHER INFORMATION

Birds in vicinity of APT.

---

## 2. ARRIVAL

---

### 2.1. OTHER INFORMATION

If the RNAV equipment fails or if the GNSS position update is malfunctioning, pilot-in-command shall inform ATC as soon as practicable. ATC will then provide vectors or issue clearance to an appropriate navigation aid.

Prior Permission Required (PPR) 24h for non-scheduled, general aviation, military or other than approved scheduled flights.

---

## 3. DEPARTURE

---

### 3.1. START-UP AND TAXI PROCEDURES

Testing of ACFT engines in exceptional cases can be performed at ACFT stand 1.

Departing ACFT shall obtain engines start-up, taxi clearance from TWR.

---



**EYPA/PLQ**  
PALANGA INTL

**JEPPESEN PALANGA, LITHUANIA**  
RNAV STAR

30 JUL 21 10-2 Eff 12 Aug

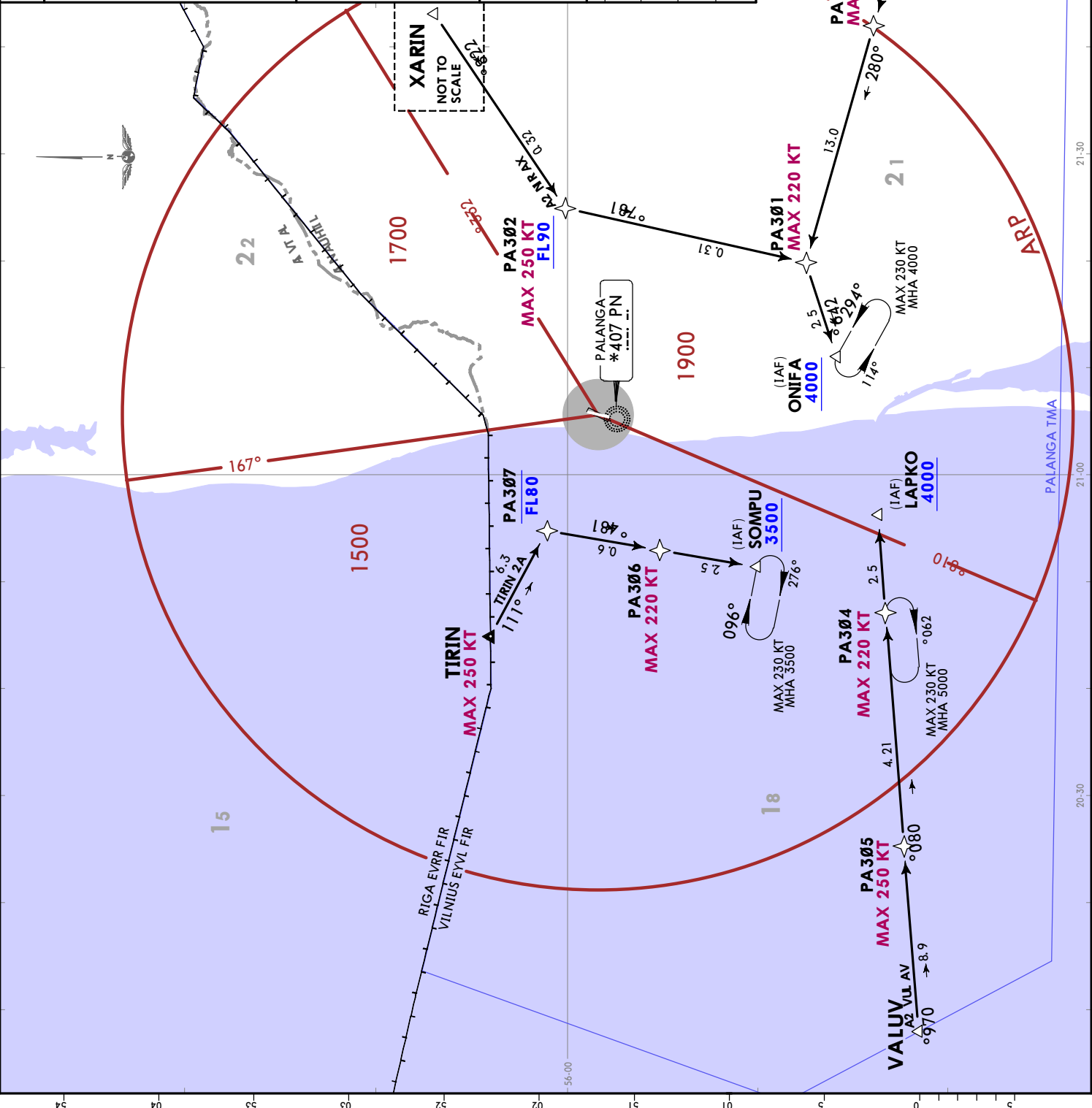
ATIS 127.805 Apt Elev 33 Alt Set: hPa Trans level: By ATC

1. RNAV 1.  
2. RNP 1 required.  
3. For ACFT not intending to execute RNAV STAR, RADAR vectors will be assigned or issue clearance to an appropriate navaid.  
4. If unable flying RNAV inform ATC using phraseology 'UNABLE RNAV STAR'. Proceed direct to IAF PN NDB to perform instrument approach. EXPECT FL or altitude by ATC. RADAR vectors within Palanga TMA may be requested.  
5. Pilots are requested to plan their descent so as to perform a continuous descent approach (CDA) from at least FL100.  
6. Pilots are requested to indicate their intention to execute STAR when entering VILNIUS FIR.  
7. EXPECT direct routings/shortcuts by ATC whenever possible.

**MANUX 2A [MANU2A]**  
**TIRIN 2A [TIRI2A]**  
**VALUV 2A [VALU2A]**  
**XARIN 2A [XARI2A]**  
**RNAV (GNSS) ARRIVALS (RWY 01)**

LOST COMMS  
Set transponder code 7600. MAINTAIN last cleared FL/altitude to IAF (VALUV 2A: proceed to IAF SOMPU), then descend in holding to 4000 for instrument approach.

STAR	ROUTING
MANUX 2A	MANUX (FL130-) - PA303 (K250-) - PA301 (K220-) - ONIFA (4000+).
TIRIN 2A	TIRIN (K250-) - PA307 (FL80-) - PA306 (K220-) - SOMPU (4000+).
VALUV 2A	VALUV - PA305 (K250-) - PA304 (K220-) - LAPKO (4000+).
XARIN 2A	XARIN - PA302 (K250-; FL90+) - PA301 (K220-) - ONIFA (4000+).



CHANGES: MSA, bearings, SOMPU altitude & holding altitude.

© JEPPESEN, 2021. ALL RIGHTS RESERVED.

ATIS  
 127.805  
 Alt Set: hPa  
 Trans level: By ATC  
 Apt Elev 33

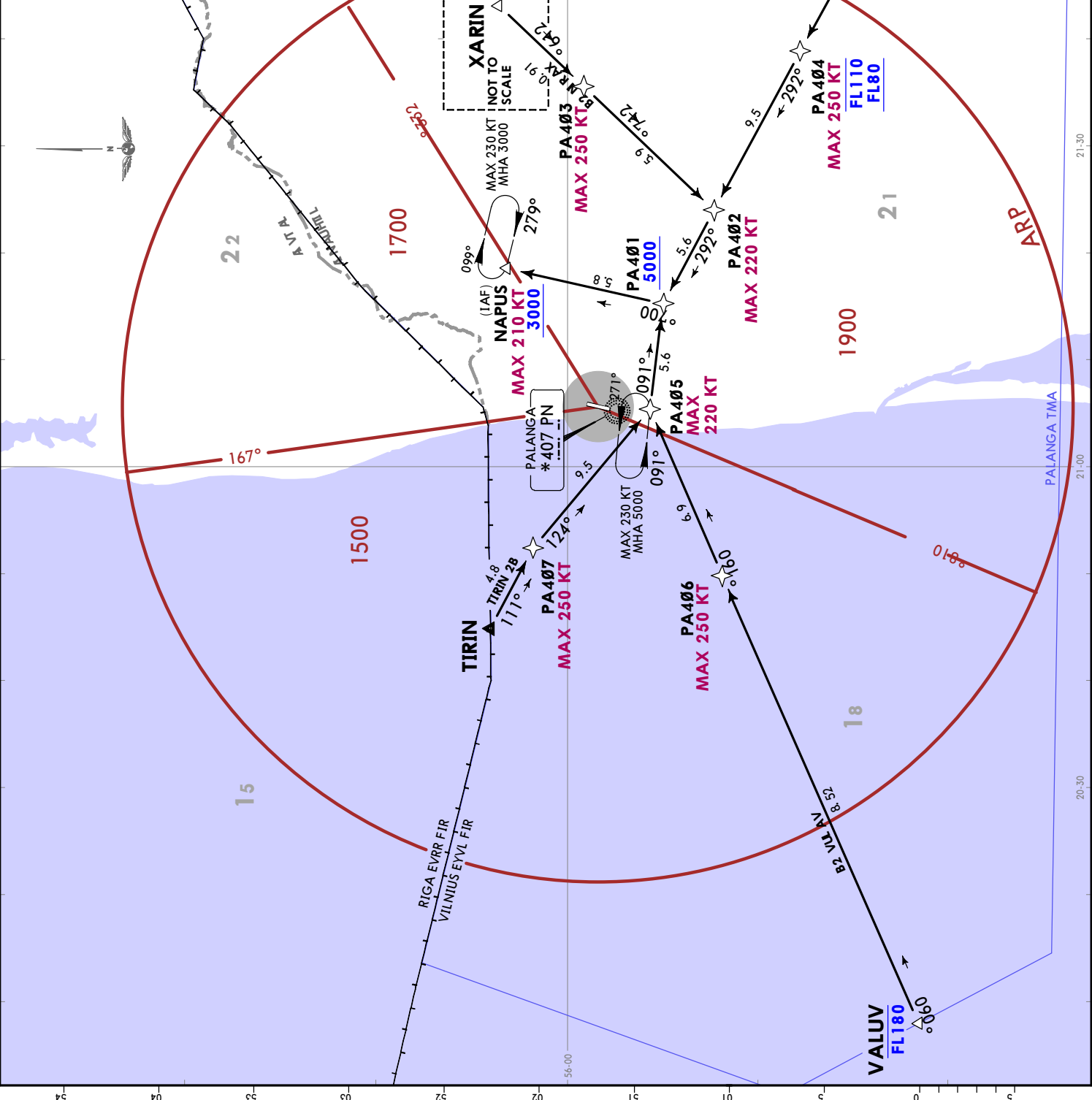
1. RNAV 1.
2. RNP 1 required.
3. For ACFT not intending to execute RNAV STAR, RADAR vectors will be assigned or issue clearance to an appropriate navaid.
4. If unable flying RNAV inform ATC using phraseology 'UNABLE RNAV STAR'. Proceed direct to IAF PN NDB to perform instrument approach. EXPECT FL or altitude by ATC. RADAR vectors within Palanga TMA may be requested.
5. Pilots are requested to plan their descent so as to perform a continuous descent approach (CDA) from at least FL100.
6. Pilots are requested to indicate their intention to execute STAR when entering VILNIUS FIR.
7. EXPECT direct routings/shortcuts by ATC whenever possible.

**MANUX 2B [MANU2B]**  
**TIRIN 2B [TIRI2B]**  
**VALUV 2B [VALU2B]**  
**XARIN 2B [XARI2B]**  
**RNAV (GNSS) ARRIVALS**  
**(RWY 19)**

LOST COMMS  
 MAX 230 KT  
 MHA 3000  
 NOT TO SCALE

LOST COMMS  
 Set transponder code 7600. MAINTAIN last cleared FL/altitude to IAF, then descend in holding to 3000 for instrument approach.

STAR	ROUTING
MANUX 2B	MANUX - PA404 (K250; FL110; FL80+) - PA402 (K220; - PA401 (5000+) - NAPUS (K210; 3000+).
TIRIN 2B	TIRIN - PA407 (K250; - PA405 (K220; - PA401 (5000+) - NAPUS (K210; 3000+).
VALUV 2B	VALUV (FL180; - PA406 (K250; - PA405 (K220; - PA401 (5000+) - NAPUS (K210; 3000+).
XARIN 2B	XARIN - PA403 (K250; - PA402 (K220; - PA401 (5000+) - NAPUS (K210; 3000+).



**EYPA/PLQ**  
PALANGA INTL

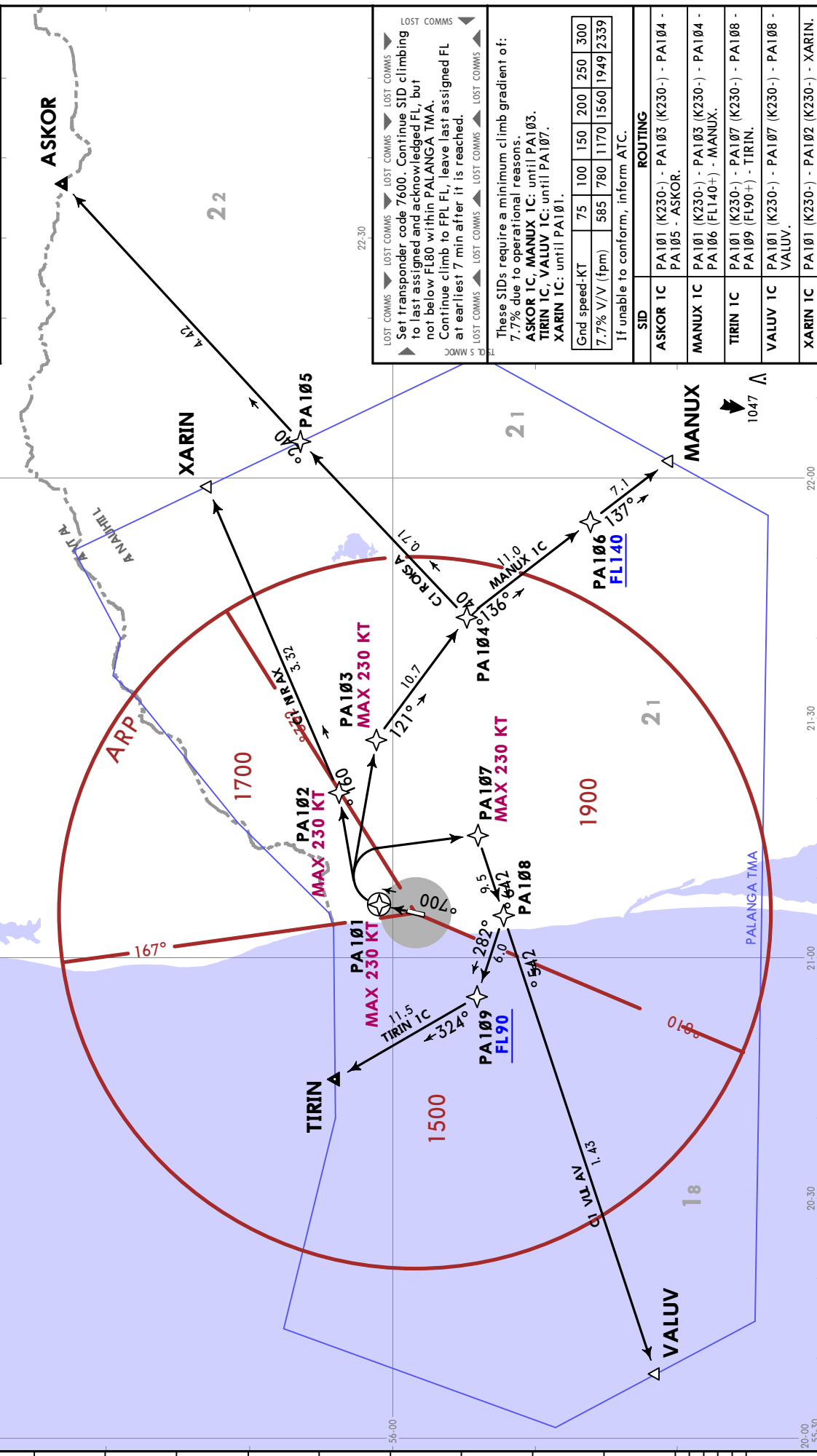
**JEPPESEN PALANGA, LITHUANIA**  
RNAV SID

30 JUL 21 10-3 Eff: 12 AUG

Trans alt: 5000  
1. RNAV 1.  
2. RNP 1 required.

Apt Elev  
33

ASKOR 1C [ASKO1C]  
MANUX 1C [MANU1C]  
TIRIN 1C [TIRI1C]  
VALUV 1C [VALU1C]  
XARIN 1C [XARI1C]  
RNAV (GNSS) DEPARTURES  
(RWY 01)









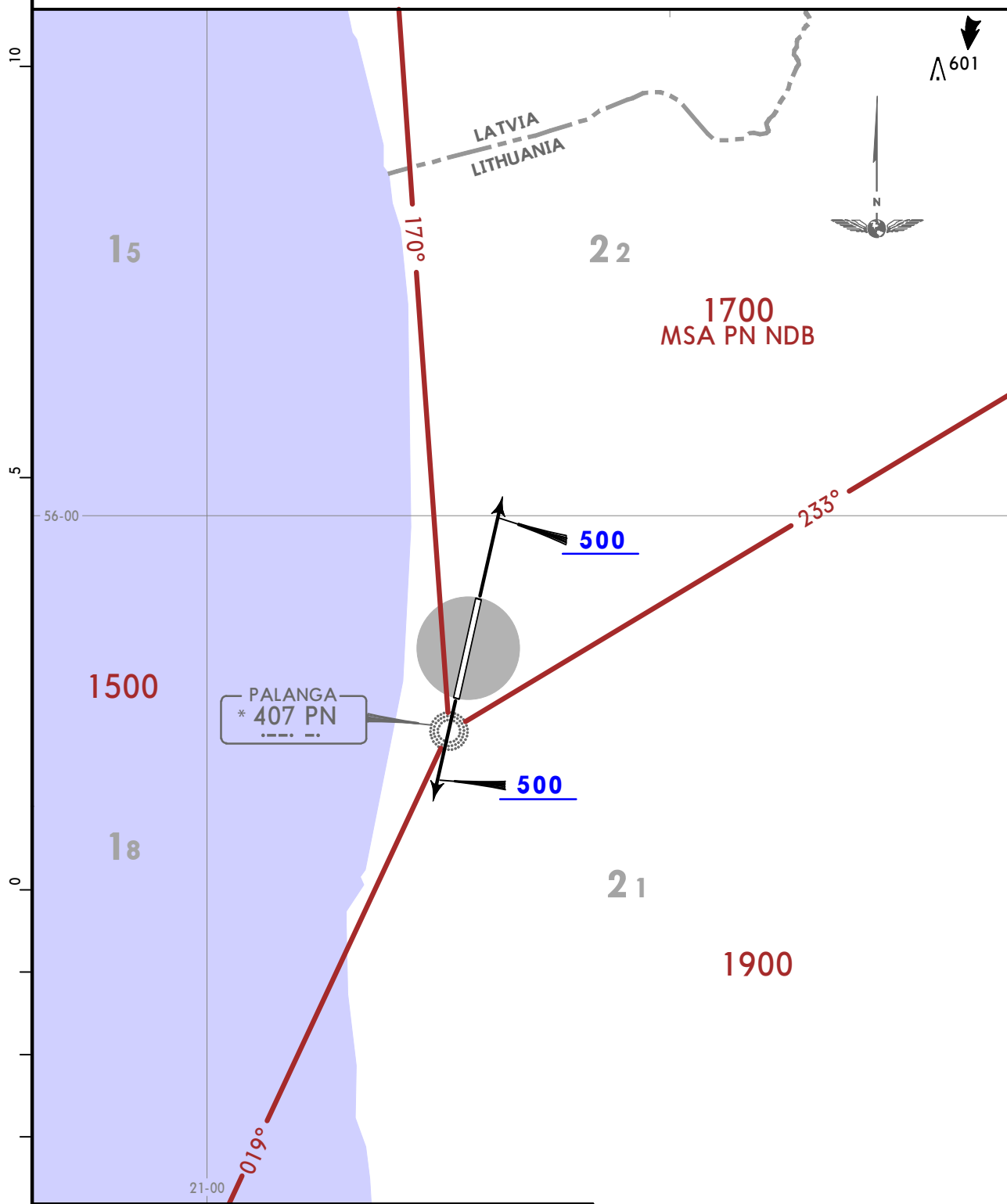
**EYPA/PLQ**  
PALANGA INTL

**JEPPESEN**  
11 FEB 22 (10-3D) Eff 24 Feb

**PALANGA, LITHUANIA**  
**DEPARTURE**

Apt Elev 33 Trans alt: 5000  
Omnidirectional departures on pilot in-command request only.

**OMNIDIRECTIONAL DEPARTURES**  
**(ALL RWYS)**



These departures require a minimum climb gradient of 6.6 % (400 per NM).

Gnd speed-KT	75	100	150	200	250	300
6.6% V/V (fpm)	501	668	1003	1337	1671	2005

RWY	ROUTING
01	Climb straight ahead to turning altitude 500. Continue climb to appropriate MSA.
19	Climb straight ahead to turning altitude 500. Continue climb to appropriate MSA.

# EYPA/PLQ

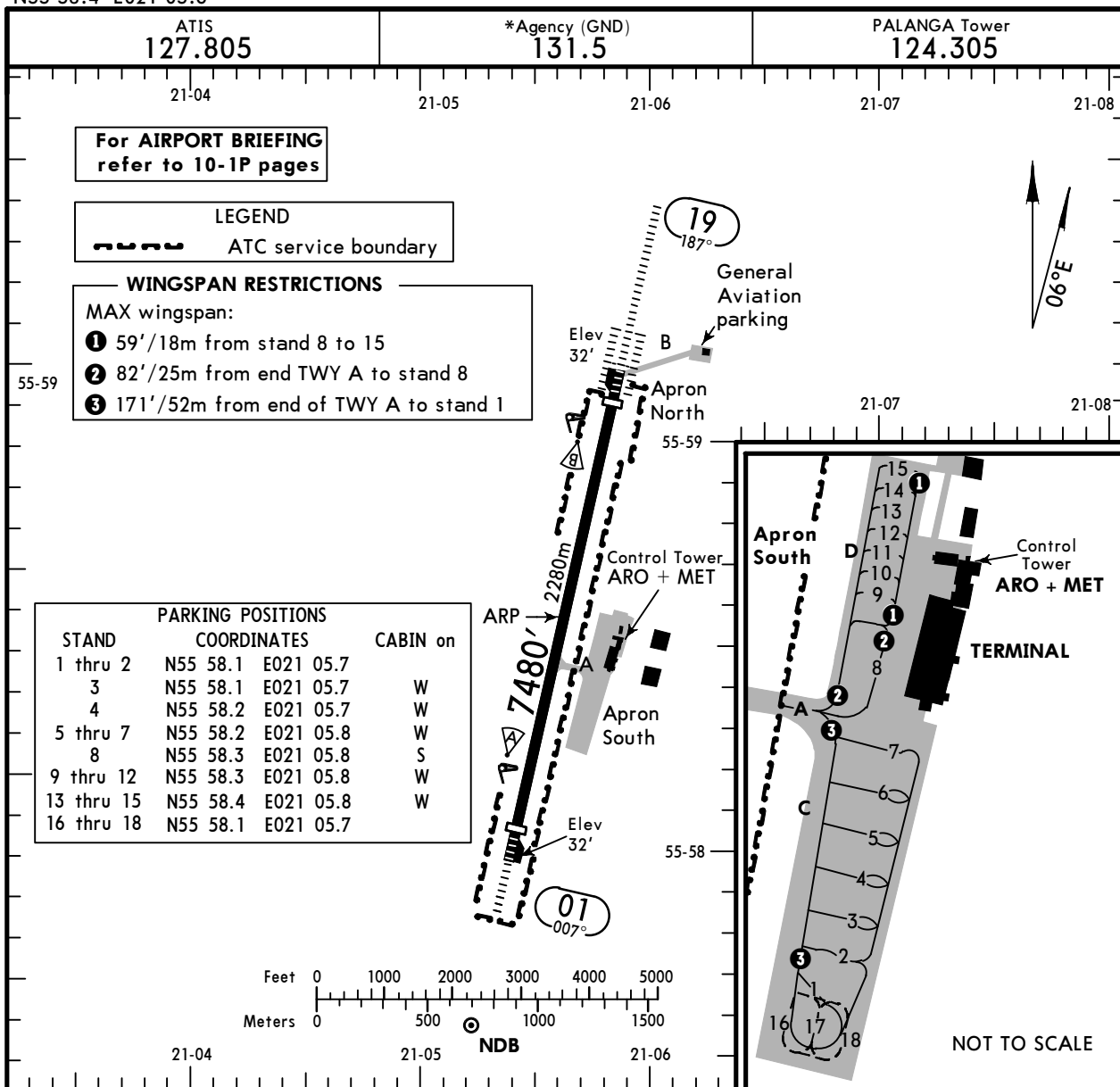
Apt Elev **33'**  
N55 58.4 E021 05.6



11 FEB 22 **(10-9)** Eff 24 Feb

# PALANGA, LITHUANIA

PALANGA INTL



### ADDITIONAL RUNWAY INFORMATION

RWY	LANDING BEYOND	USABLE LENGTHS		TAKE-OFF	WIDTH
		Threshold	Glide Slope		
01	HIRL ④ CL ⑤ HIALS REIL PAPI-L(3.0°) RVR	6988' 2130m	6016' 1834m	⑥	148' 45m
19	HIRL ④ CL ⑤ HIALS REIL PAPI-L(3.0°) RVR				

④ 60m spacing. ⑤ 30m spacing.

⑥ TAKE-OFF RUN AVAILABLE

RWY 01:

From rwy head 7480'(2280m)  
twy A int 4511'(1375m)

RWY 19:

From rwy head 7480'(2280m)  
twy A int 3045'(928m)

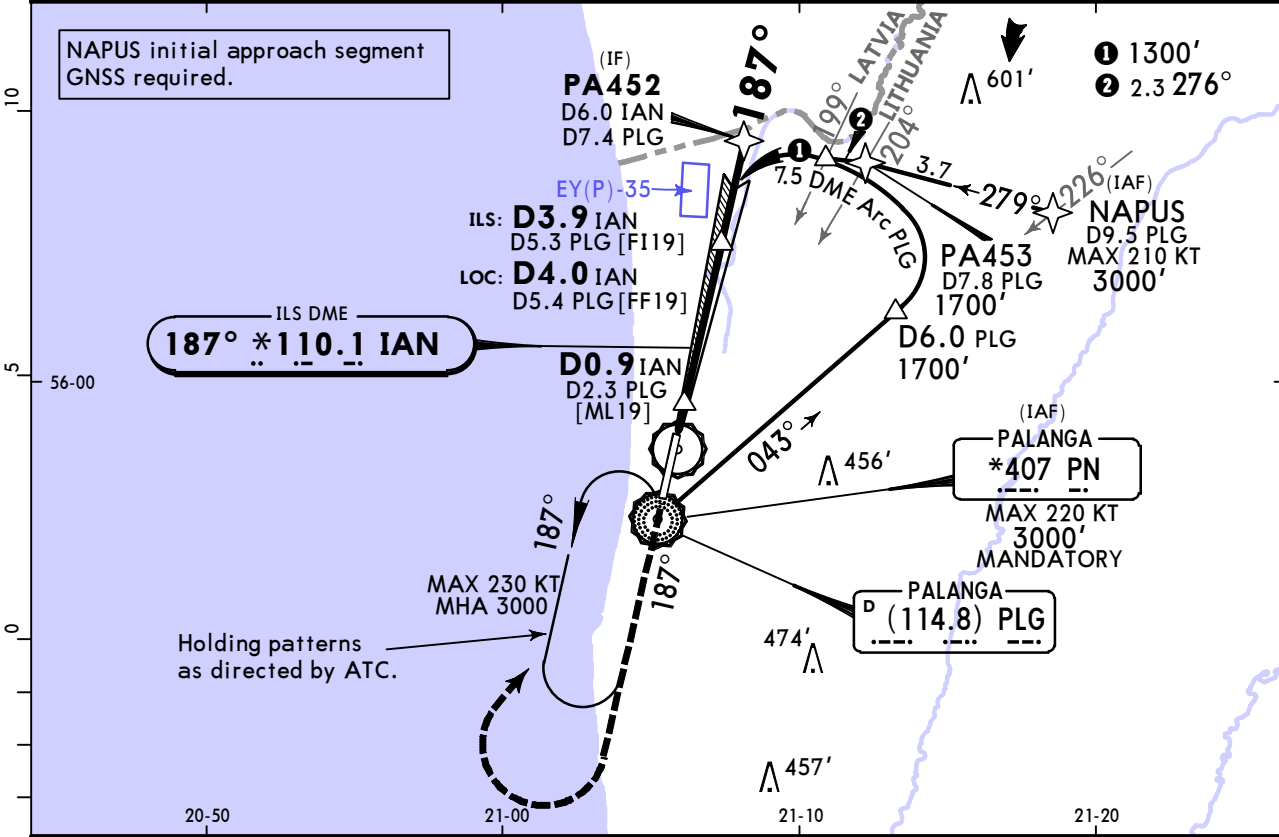
Std/State		TAKE-OFF			
Low Visibility Take-off		RL or RCLM	RL	Adequate Vis Ref	
RL or RCLM	RL			DAY	NIGHT
DAY	NIGHT	DAY	NIGHT	DAY	NIGHT
R300m		R/V400m		R/V500m	NA

# EYPA/PLQ PALANGA INTL

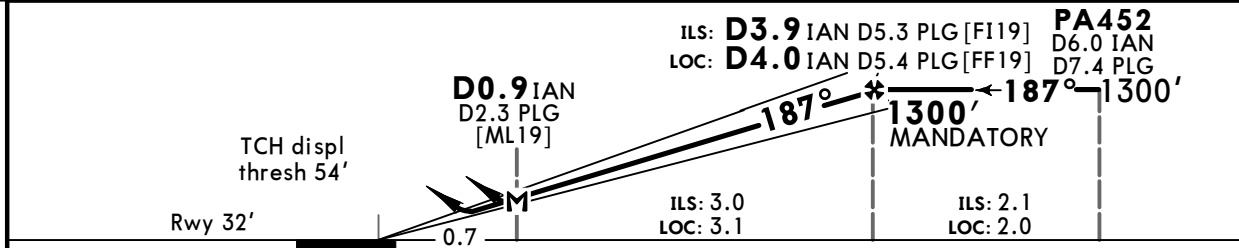
**JEPPESSEN**  
11 FEB 22 **11-1** Eff 24 Feb

# PALANGA, LITHUANIA ILS or LOC Rwy 19

ATIS <b>127.805</b>		PALANGA Approach <b>124.305</b>		PALANGA Tower <b>124.305</b>		*Ground <b>131.5</b>
LOC IAN <b>*110.1</b>	Final Apch Crs <b>187°</b>	<b>D3.9 IAN MANDATORY</b> 1300' (1268')	ILS DA(H) Refer to Minimums	Apt Elev 33'	Rwy 32'	
<b>MISSED APCH: Climb on track 187° to 1900', then turn RIGHT (MAX 220 KT) to NDB climbing to 3000'.</b>						
Alt Set: hPa    Rwy Elev: 1 hPa    Trans level: By ATC    Trans alt: 5000'				DME required. DME IAN coverage-at least of azimuth angle guidance coverage sector.		

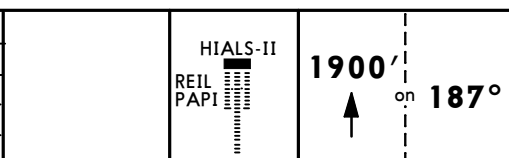


<b>LOC (GS out)</b>	IAN DME	2.0	3.0
	ALTITUDE	660'	980'



Gnd speed-Kts	70	90	100	120	140	160
GS	3.00°	372	478	531	637	849
MAP at D0.9 IAN/D2.3 PLG						
D4.0 IAN to MAP	3.1	2:39	2:04	1:52	1:33	1:20

Timing not authorized for defining the MAP.



Std/State	STRAIGHT-IN LANDING				CIRCLE-TO-LAND	
	ILS DA(H)		LOC (GS out) CDFA DA(H)/MDA(H)		Max Kts	MDA(H)
A	A: 250' (218') C: 270' (238')		380' (348')		100	460' (427') V1500m
B	B: 262' (230') D: 281' (249')				135	710' (677') V2400m
C	R550m	R1200m	R900m	R1500m	180	860' (827') V3600m
D		R1300m		R1600m	D	NOT AUTHORIZED

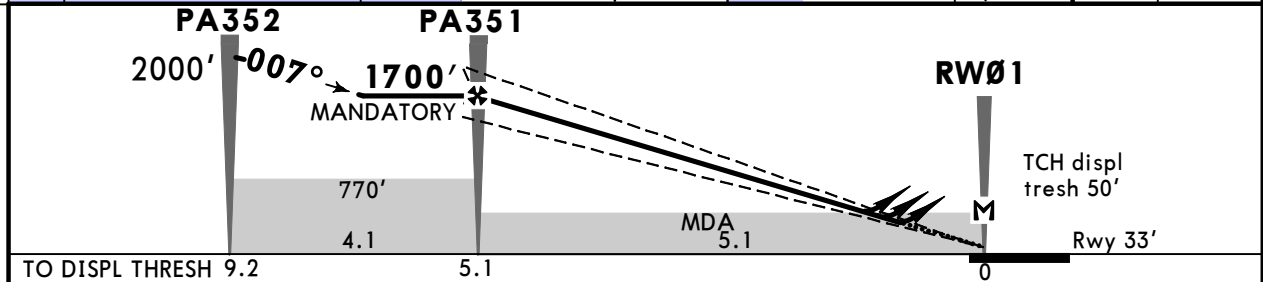
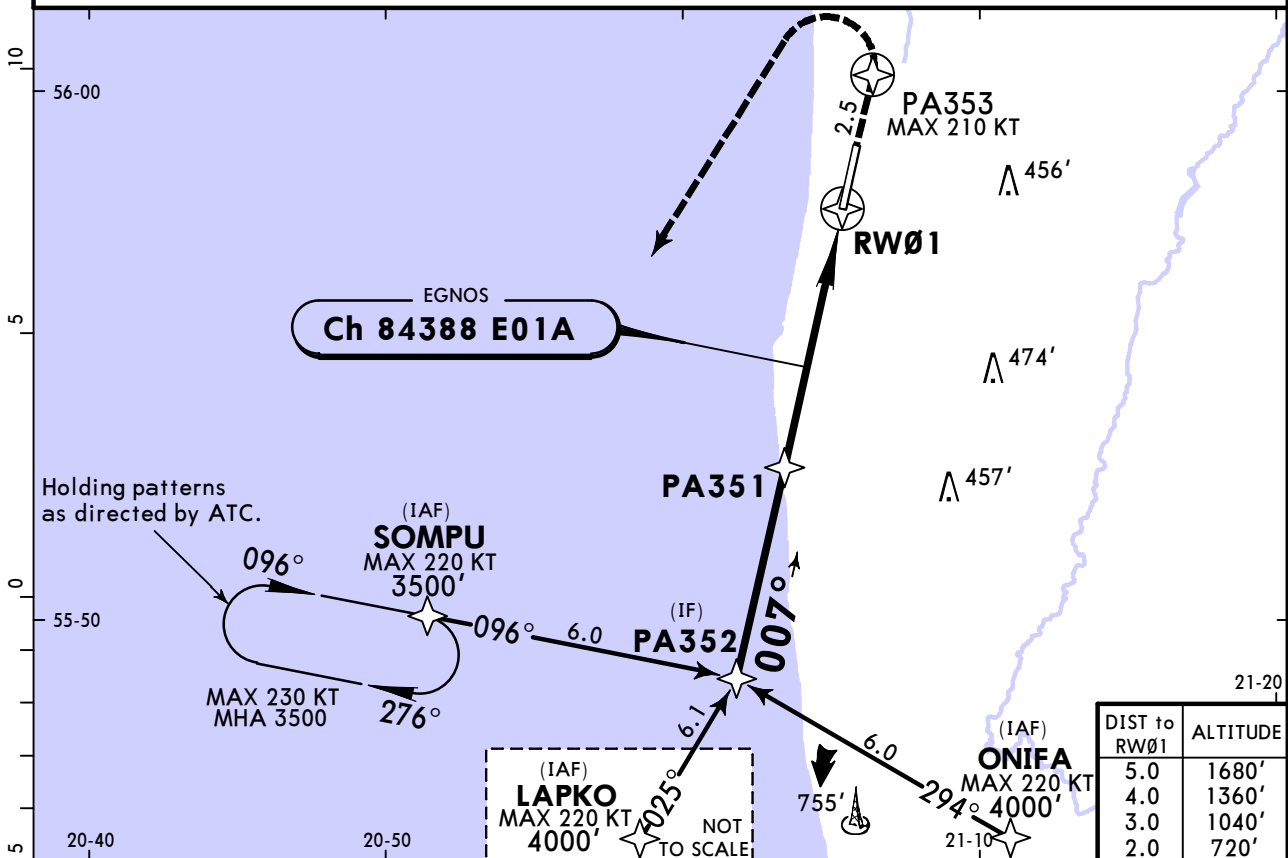
**1** R750m when a Flight Director or Autopilot or HUD to DA is not used.

**EYPA/PLQ**  
**PALANGA INTL**

**JEPPESSEN**  
30 JUL 21 **(12-1)** Eff 12 Aug

**PALANGA, LITHUANIA**  
**RNP Rwy 01**

ATIS <b>127.805</b>		PALANGA Approach <b>124.305</b>		PALANGA Tower <b>124.305</b>		*Ground <b>131.5</b>
EGNOS <b>Ch 84388</b> <b>E01A</b>	Final Apch Crs <b>007°</b>	<b>PA351</b> MANDATORY <b>1700'</b> (1667')	LPV DA(H) Refer to Minimums	Apt Elev 33' Rwy 33'	<p>MSA ARP</p>	
<b>MISSED APCH: Climb STRAIGHT AHEAD to PA353, then turn LEFT (MAX 210 KT), direct to SOMPU climbing to 3500'.</b>						
RNP APCH	Alt Set: hPa	Apt Elev: 1 hPa	Trans level: By ATC		Trans alt: 5000'	
1. Baro-VNAV not authorized below -20°C. 2. VPA 3.5° reached above 50°C.						



Gnd speed-Kts	70	90	100	120	140	160	HIALS REIL PAPI 
Glide Path Angle	3.00°	372	478	531	637	743	
MAP at RW01							
PA351 to MAP	5.1	4:22	3:24	3:04	2:33	2:11	1:55
Timing not authorized for defining the MAP.							

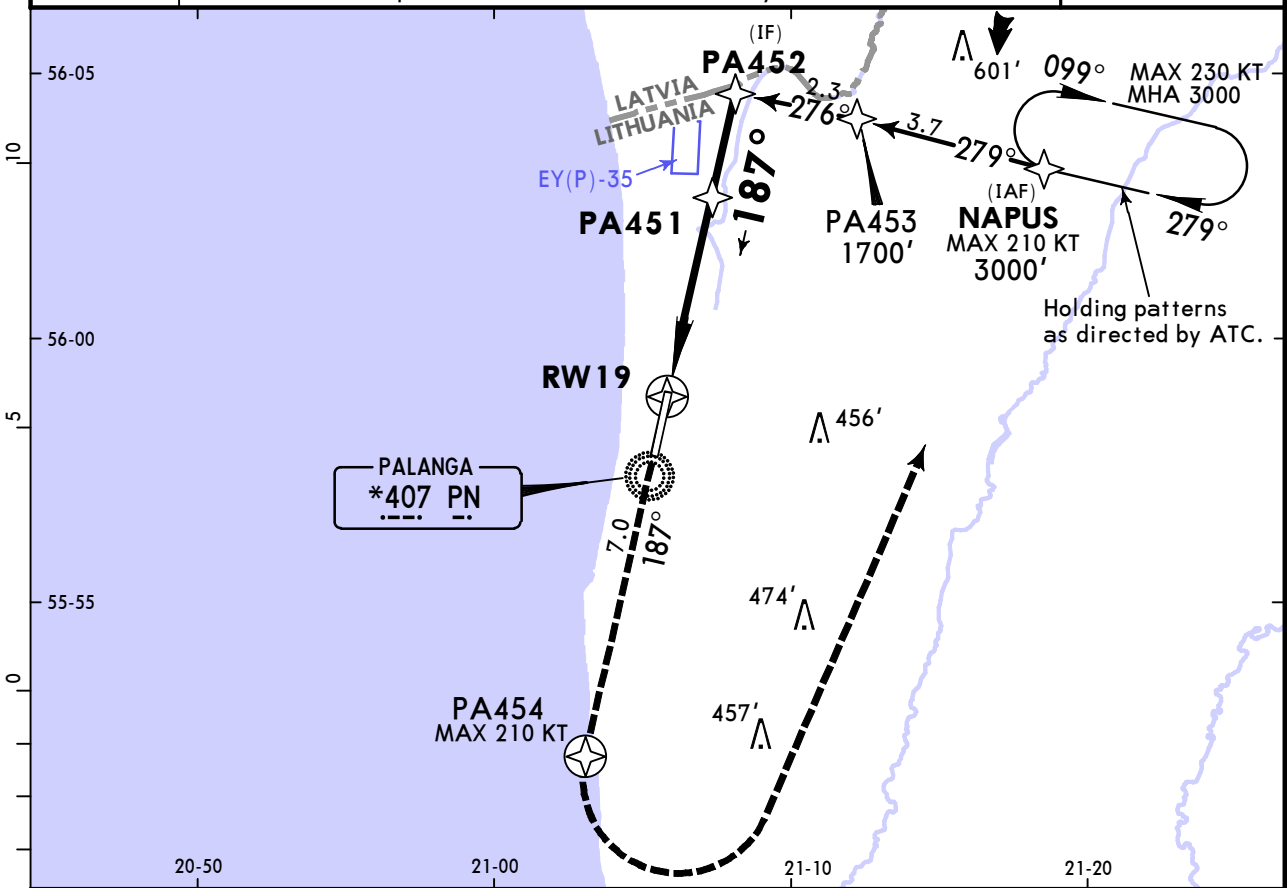
Std/State	STRAIGHT-IN LANDING			CIRCLE-TO-LAND		
	LPV	LNAV/VNAV		LNAV		
	DA(H) A: <b>283'</b> (250') B: <b>286'</b> (253')	DA(H) C: <b>294'</b> (261') D: <b>304'</b> (271')	DA(H) A: <b>283'</b> (250') B: <b>293'</b> (260')	DA(H) C: <b>303'</b> (270') D: <b>313'</b> (280')	CDFA DA/MDA(H) <b>470'</b> (437')	Max Kts
A	ALS out		ALS out		ALS out	100
B	R800m	R1300m	R800m	R1300m	R1500m	135
C	R900m	R1300m	R900m	R1300m	R1600m R2000m	180
D						D
						MDA(H)
						460' (427') V1500m
						710' (677') V2400m
						860' (827') V3600m
						NOT AUTHORIZED

# EYPA/PLQ PALANGA INTL

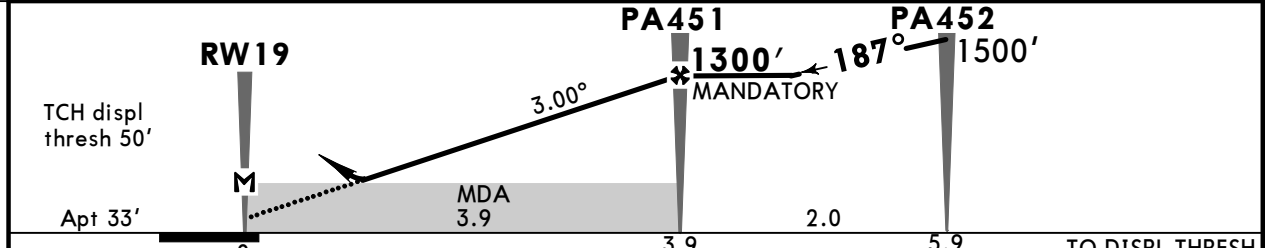
**JEPPESSEN**  
30 JUL 21 (12-2) Eff 12 Aug

# PALANGA, LITHUANIA RNP Rwy 19

ATIS <b>127.805</b>		PALANGA Approach <b>124.305</b>		PALANGA Tower <b>124.305</b>		*Ground <b>131.5</b>
RNAV	Final Apch Crs <b>187°</b>	PA451 MANDATORY <b>1300'</b> (1267')	DA/MDA(H) <b>410'</b> (377')	Apt Elev 33'		
<b>MISSED APCH: Climb on track 187° to PA454 (MIN 1500'), then turn LEFT (MAX 210 KT), direct to NAPUS climbing to 3000'.</b>						
RNP APCH	Alt Set: hPa	Apt Elev: 1 hPa	Trans level: By ATC	Trans alt: 5000'		MSA ARP



DIST to RW19	2.0	3.0
ALTITUDE	720'	1030'



Gnd speed-Kts	70	90	100	120	140	160	HIALS-II REIL PAPI 
Descent Angle 3.00°	372	478	531	637	743	849	
MAP at RW19							
PA451 to MAP	3.9	3:21	2:36	2:20	1:57	1:40	

Timing not authorized for defining the MAP.

Std/State		STRAIGHT-IN LANDING		CIRCLE-TO-LAND		
		LNAV CDFA DA/MDA(H) <b>410'</b> (377')				
		ALS out		Max Kts	MDA(H)	
A	R1000m	R1500m		100	<b>460'</b> (427') V1500m	
B		R1700m		135	<b>710'</b> (677') V2400m	
C				180	<b>860'</b> (827') V3600m	
D					D	NOT AUTHORIZED

1 VNAV DA(H) in lieu of MDA(H) depends on operator policy.  
 CHANGES: MSA. Bearings. Waypoints. Circling minimums. © JEPPESSEN, 2010, 2021. ALL RIGHTS RESERVED.

# EYPA/PLQ PALANGA INTL

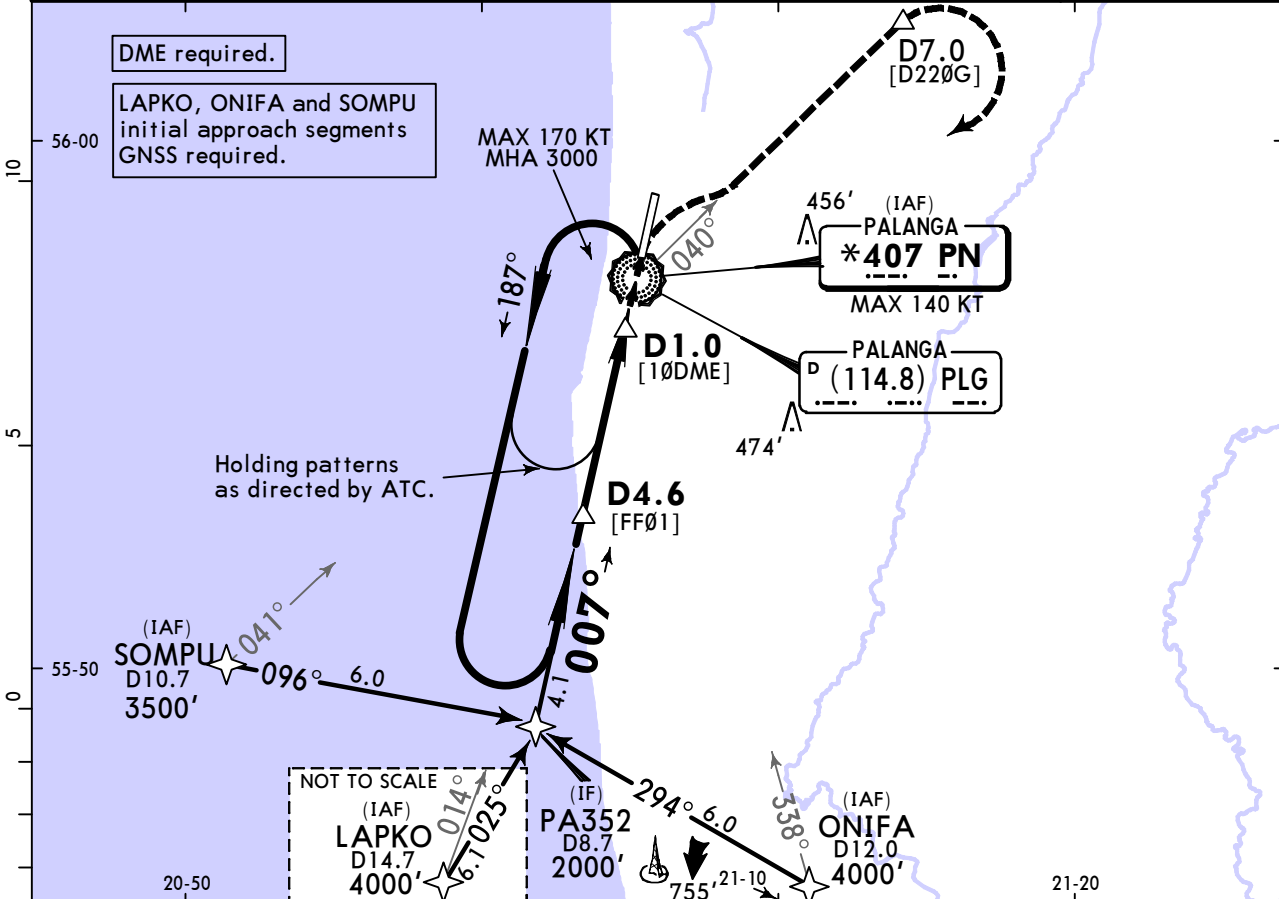
**JEPPESEN**  
30 JUL 21  
Eff 12 Aug **(16-1)**

**PALANGA, LITHUANIA**  
NDB Z Rwy 01

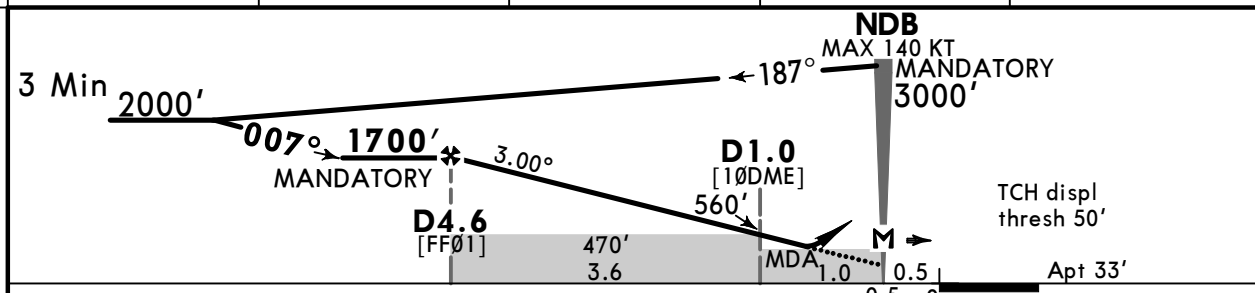
CAT A & B

BRIEFING STRIP™

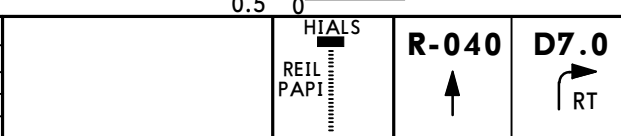
ATIS 127.805	PALANGA Approach 124.305		PALANGA Tower 124.305		*Ground 131.5
NDB PN *407	Final Apch Crs 007°	D4.6 MANDATORY 1700' (1667')	DA/MDA(H) (CONDITIONAL) 400' (367')	Apt Elev 33'	
<b>MISSED APCH:</b> Climb on R-040, at D7.0 turn RIGHT to NDB climbing to 3000'. Climb with 3.5% or more until crossing D7.0 due to airspace structure.					
Alt Set: hPa	Apt Elev: 1 hPa	Trans level: By ATC		Trans alt: 5000'	MSA PN NDB



PLG DME	4.0	3.0	2.0	1.0
ALTITUDE	1500'	1190'	870'	560'



Gnd speed-Kts	70	90	100	120	140	160
Descent Angle 3.00°	372	478	531	637	743	849
MAP at NDB	D4.6 to MAP 4.6 3:57 3:04 2:46 2:18 1:58 1:43					
Timing not authorized for defining the MAP.						



Std/State	STRAIGHT-IN LANDING				Max Kts	MDA(H)	CIRCLE-TO-LAND
	With D1.0 CDFA DA/MDA(H) 400' (367')		W/o D1.0 CDFA DA/MDA(H) 470' (437')				
	ALS out	ALS out	ALS out	ALS out			
A	R1300m	R1500m	R1500m	R2200m	100	460' (427') <b>I</b> V1500m	
B					135	710' (677') V2400m	
C	NOT APPLICABLE				C	NOT APPLICABLE	
D	NOT APPLICABLE				D	NOT APPLICABLE	

PANS OPS

**I** or higher straight-in minimums.

# EYPA/PLQ PALANGA INTL

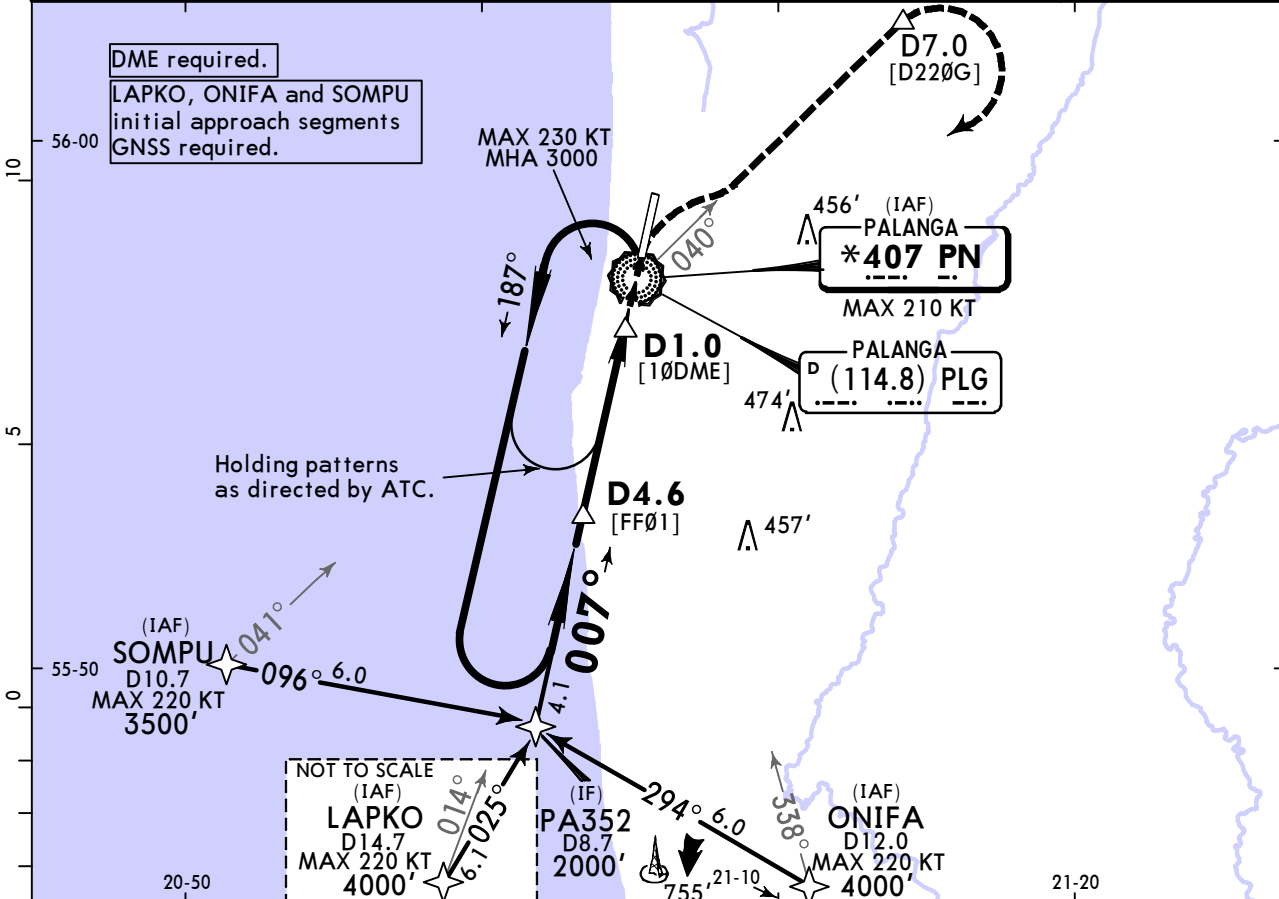
**JEPPESSEN**  
30 JUL 21  
Eff 12 Aug **16-2**

**PALANGA, LITHUANIA**  
NDB Y Rwy 01

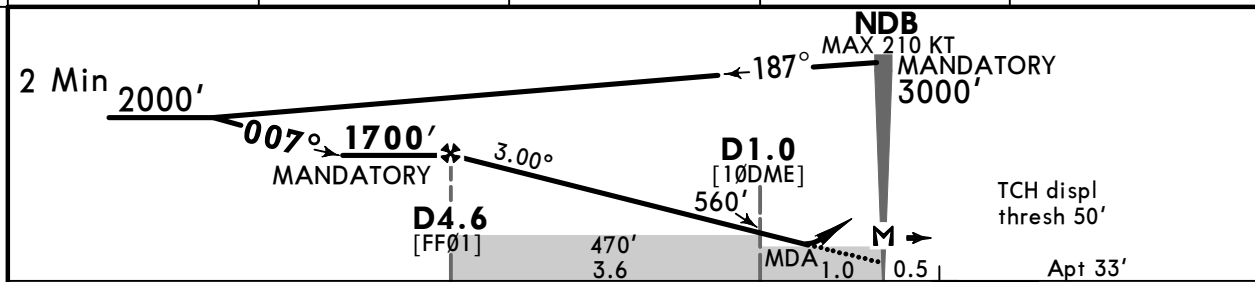
CAT C & D

BRIEFING STRIP™

ATIS 127.805	PALANGA Approach 124.305		PALANGA Tower 124.305		*Ground 131.5
NDB PN *407	Final Apch Crs 007°	D4.6 MANDATORY 1700' (1667')	DA/MDA(H) (CONDITIONAL) 400' (367')	Apt Elev 33'	
<b>MISSED APCH:</b> Climb on R-040, at D7.0 turn RIGHT (MAX 210 KT) to NDB climbing to 3000'. Climb with 3.5% or more until crossing D7.0 due to airspace structure.					
Alt Set: hPa	Apt Elev: 1 hPa	Trans level: By ATC		Trans alt: 5000'	MSA PN NDB



PLG DME	4.0	3.0	2.0	1.0
ALTITUDE	1500'	1190'	870'	560'



Gnd speed-Kts	70	90	100	120	140	160	HIALS REIL PAPI R-040 ↑ D7.0 RT
Descent Angle	3.00°	372	478	531	637	743	
MAP at NDB	4.6	3:57	3:04	2:46	2:18	1:58	

<b>Std/State</b>				<b>STRAIGHT-IN LANDING</b>		<b>CIRCLE-TO-LAND</b>	
With D1.0 CDFA DA/MDA(H) 400' (367')		W/o D1.0 CDFA DA/MDA(H) 470' (437')		ALS out		Max Kts MDA(H)	
A	NOT APPLICABLE		NOT APPLICABLE		A	NOT APPLICABLE	
B	NOT APPLICABLE		NOT APPLICABLE		B	NOT APPLICABLE	
C	R1300m	R1700m	R1700m	R2400m	180	860' (827') V3600m	
D					D	NOT AUTHORIZED	

PANS OPS

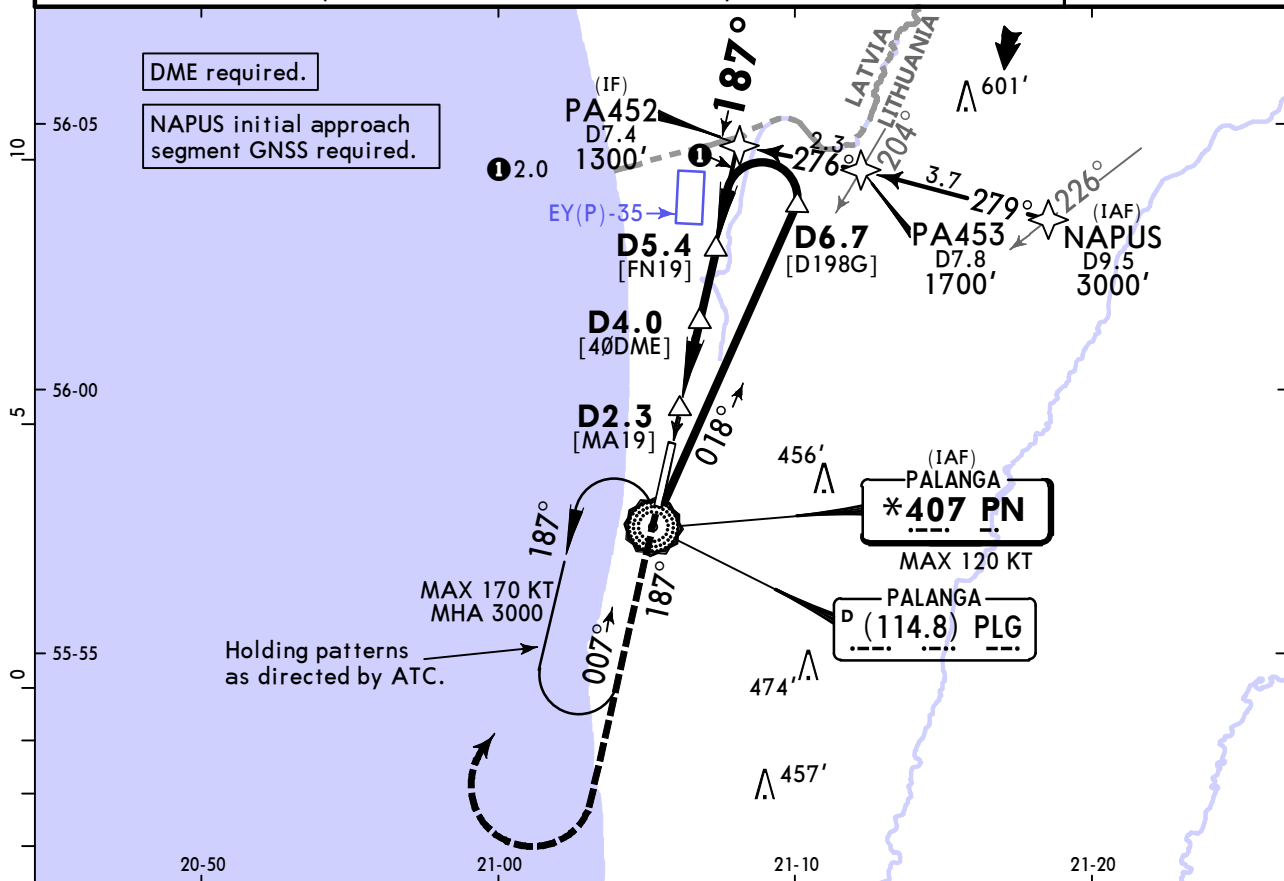
# EYPA/PLQ PALANGA INTL

**JEPESEN**  
30 JUL 21  
Eff 12 Aug 16-3

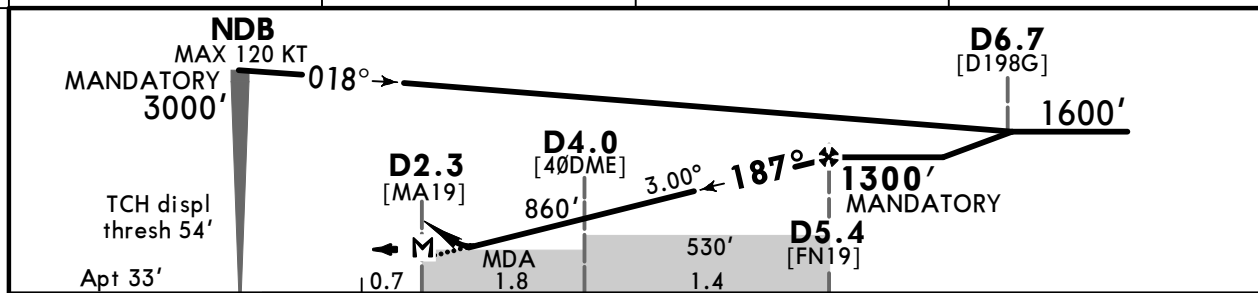
# PALANGA, LITHUANIA NDB Z Rwy 19

CAT A & B

ATIS <b>127.805</b>	PALANGA Approach <b>124.305</b>		PALANGA Tower <b>124.305</b>		*Ground <b>131.5</b>
NDB PN <b>*407</b>	Final Apch Crs <b>187°</b>	<b>D5.4</b> MANDATORY <b>1300'</b> (1267')	DA/MDA(H) (CONDITIONAL) <b>410'</b> (377')	Apt Elev 33'	
<b>MISSED APCH:</b> Climb via NDB on R-187 to 1900', then turn RIGHT to NDB climbing to 3000'. Climb with 3.5% or more until passing 1900' due to airspace structure.					
Alt Set: hPa		Apt Elev: 1 hPa	Trans level: By ATC	Trans alt: 5000'	MSA PN NDB



PLG DME	3.0	4.0	5.0
ALTITUDE	540'	860'	1170'



Gnd speed-Kts	70	90	100	120	140	160	HTALS-II REIL PAPI	PN <b>407</b>	1900'	PN <b>407</b>	
Descent Angle	3.00°	372	478	531	637	743		849	↑	↑	on R-187
MAP at D2.3											
D5.4 to MAP	3.2	2:45	2:08	1:55	1:36	1:22	1:12				
Timing not authorized for defining the MAP.											

Std/State	STRAIGHT-IN LANDING				CIRCLE-TO-LAND	
	With D4.0 CDFA DA/MDA(H) <b>410'</b> (377')		W/o D4.0 CDFA DA/MDA(H) <b>530'</b> (497')		Max Kts	MDA(H)
A	R1000m	R1500m	R1700m	R2500m	100	<b>460'</b> (427') <b>V1500m</b>
B					135	<b>710'</b> (677') <b>V2400m</b>
C	NOT APPLICABLE				C	NOT APPLICABLE
D	NOT APPLICABLE				D	NOT APPLICABLE

# EYPA/PLQ PALANGA INTL

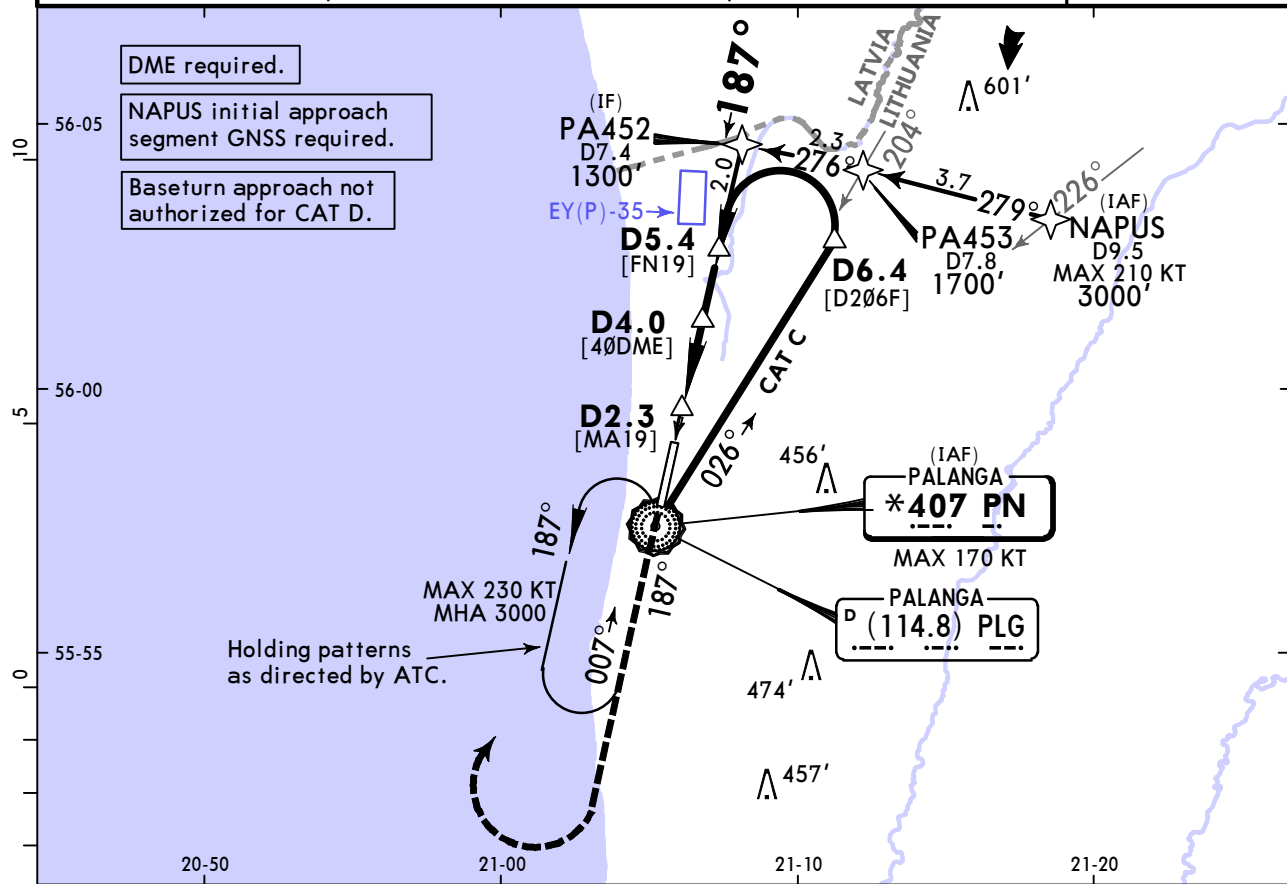
**JEPPESEN**  
30 JUL 21  
Eff 12 Aug 16-4

# PALANGA, LITHUANIA NDB Y Rwy 19

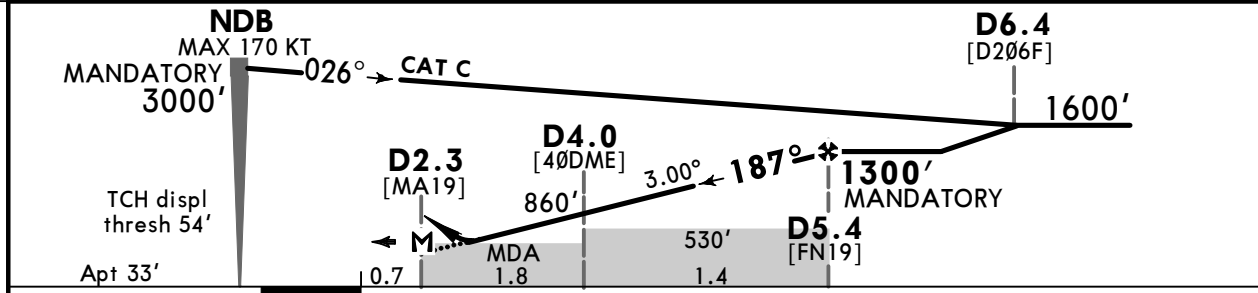
CAT C & D

BRIEFING STRIP™

ATIS <b>127.805</b>	PALANGA Approach <b>124.305</b>		PALANGA Tower <b>124.305</b>		*Ground <b>131.5</b>
NDB PN <b>*407</b>	Final Apch Crs <b>187°</b>	<b>D5.4</b> MANDATORY <b>1300'</b> (1267')	DA/MDA(H) (CONDITIONAL) <b>410'</b> (377')	Apt Elev 33'	
<b>MISSED APCH: Climb via NDB on R-187 to 1900', then turn RIGHT (MAX 220 KT) to NDB climbing to 3000'.</b> Climb with 3.5% or more until passing 1900' due to airspace structure.					
Alt Set: hPa		Apt Elev: 1 hPa	Trans level: By ATC		Trans alt: 5000'
					MSA PN NDB



PLG DME	3.0	4.0	5.0
ALTITUDE	540'	860'	1170'



Gnd speed-Kts	70	90	100	120	140	160	HIALS-II REIL PAPI	PN <b>407</b>	1900'	PN <b>407</b>			
Descent Angle	3.00°	372	478	531	637	849		↑	↑	on	R-187		
MAP at D2.3	D5.4 to MAP						3.2	2:45	2:08	1:55	1:36	1:22	1:12
Timing not authorized for defining the MAP.													

Std/State	STRAIGHT-IN LANDING				CIRCLE-TO-LAND	
	With D4.0 CDFA DA/MDA(H) <b>410'</b> (377')		W/o D4.0 CDFA DA/MDA(H) <b>530'</b> (497')		MDA(H)	
A	ALS out		ALS out		NOT APPLICABLE	
B	NOT APPLICABLE		NOT APPLICABLE		NOT APPLICABLE	
C	R1000m	R1700m	R1900m	R2700m	180	860' (827') V3600m
D					D	NOT AUTHORIZED

PANS OPS

## Chart changes since cycle 15-2023

ADD = added chart, REV = revised chart, DEL = deleted chart.

ACT	PROCEDURE IDENT	INDEX	REV DATE	EFF DATE
-----	-----------------	-------	----------	----------

**PALANGA, (PALANGA INTL - EYPA)**

## TERMINAL CHART CHANGE NOTICES

No Chart Change Notices for Airport EYPA