

List of pages in this Trip Kit

Trip Kit Index

Airport Information For EYSA

Terminal Charts For EYSA

Revision Letter For Cycle 16-2023

Change Notices

Notebook

General Information

Location: SIAULIAI LTU
ICAO/IATA: EYSA / SQQ
Lat/Long: N55° 53.63', E023° 23.70'
Elevation: 447 ft

Airport Use: Joint-Use
Daylight Savings: Observed
UTC Conversion: -2:00 = UTC
Magnetic Variation: 10.0° E

Fuel Types: Jet A-1
Customs: Yes
Airport Type: IFR
Landing Fee: Yes
Control Tower: Yes
Jet Start Unit: No
LLWS Alert: No
Beacon: No

Sunrise: 0604 Z
Sunset: 1419 Z

Runway Information

Runway: 14L
Length x Width: 11483 ft x 148 ft
Surface Type: concrete
TDZ-Elev: 447 ft
Lighting: Edge, ALS, Centerline

Runway: 14R
Length x Width: 10643 ft x 105 ft
Surface Type: concrete
TDZ-Elev: 440 ft
Lighting: Edge, ALS

Runway: 32L
Length x Width: 10643 ft x 105 ft
Surface Type: concrete
TDZ-Elev: 434 ft
Lighting: Edge, ALS

Runway: 32R
Length x Width: 11483 ft x 148 ft
Surface Type: concrete
TDZ-Elev: 441 ft
Lighting: Edge, ALS, Centerline

Communication Information

ATIS: 120.755

Siauliai Tower: 120.405

Siauliai Information: 124.455 Flight Info Service RCO

EYSA/SQQ SIAULIAI INTL

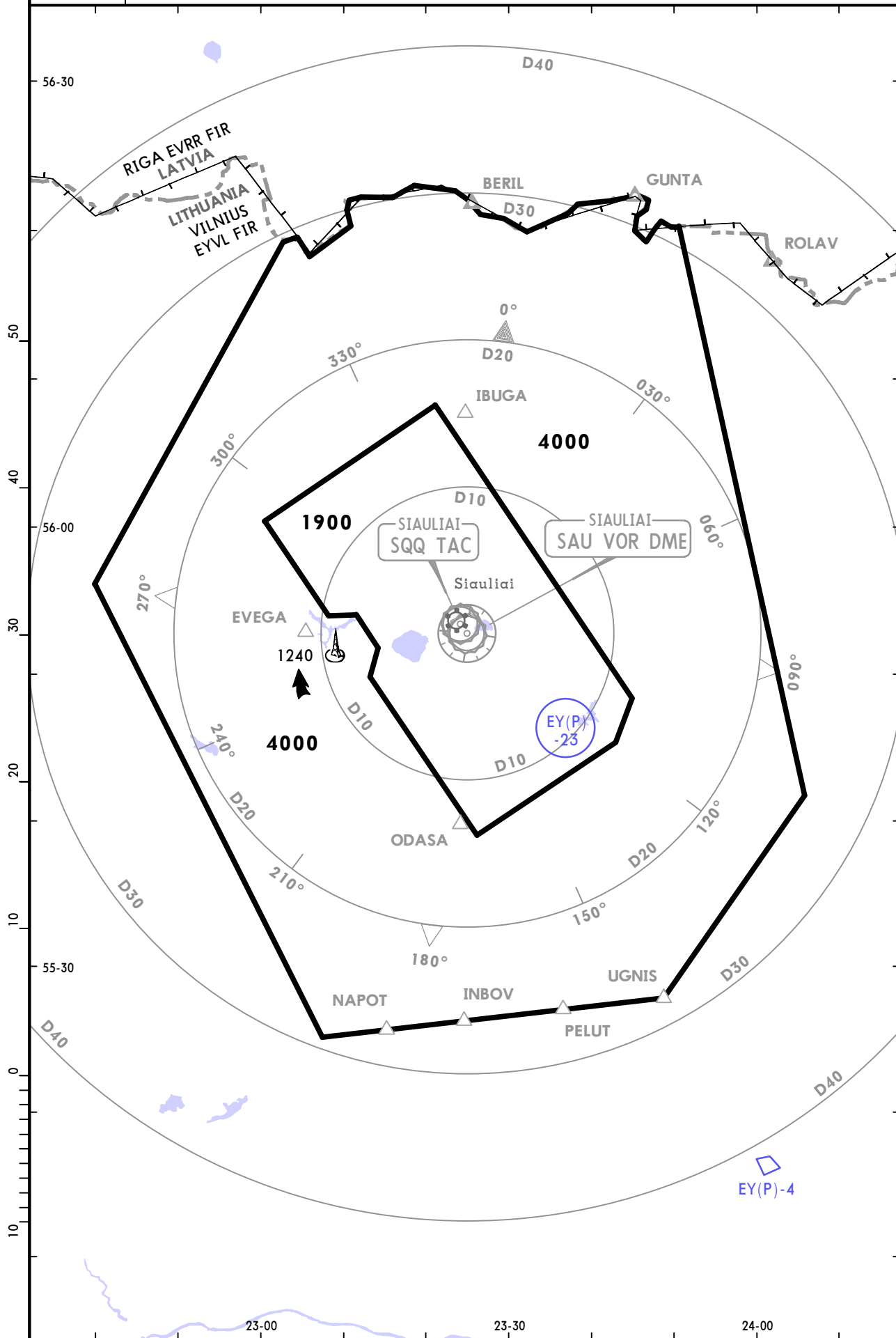
JEPPESSEN
30 NOV 18 **(10-1R)** Eff 6 Dec

SIAULIAI, LITHUANIA

RADAR MINIMUM ALTITUDES

Apt Elev
447

Alt Set: hPa Trans level: By ATC Trans alt: 5000
1. Chart only to be used for cross-checking of assigned altitudes while under RADAR control.
2. Altitudes assigned by ATC include a correction for low temperature effect when necessary.



NOISE ABATEMENT

GENERAL

Noise abatement procedures should be applied according to ICAO Doc 8168, Volume 1, section 7.

These regulations establish limitation of operation of civil subsonic jet ACFT (hereinafter - aeroplanes) to and from the airports of the Republic of Lithuania.

1. These regulations are applied to the ACFT with a MTOM of 34,000 kg or more and with a certified maximum internal accommodation for the ACFT type in question consisting of more than nineteen passenger seats, excluding any seats for crew.
2. ACFT can operate to and from the airports of the Republic of Lithuania only if they meet the standards of ICAO Annex 16, Vol 1, Chapter 3, Part II (second edition, 1988).
3. The CAA has the right to exempt ACFT of historical significance from applying the requirements of item 2.
4. In exceptional cases the CAA may temporarily allow operation of an ACFT that does not meet the requirements of item 2, at airports of the Republic of Lithuania, if:
 - a) operation of an ACFT is so significant that it would be unjustifiable to decline to grant a temporary exemption;
 - b) ACFT performs a non-commercial flight related with its repair, maintenance and modification.

EYSA/SQQ

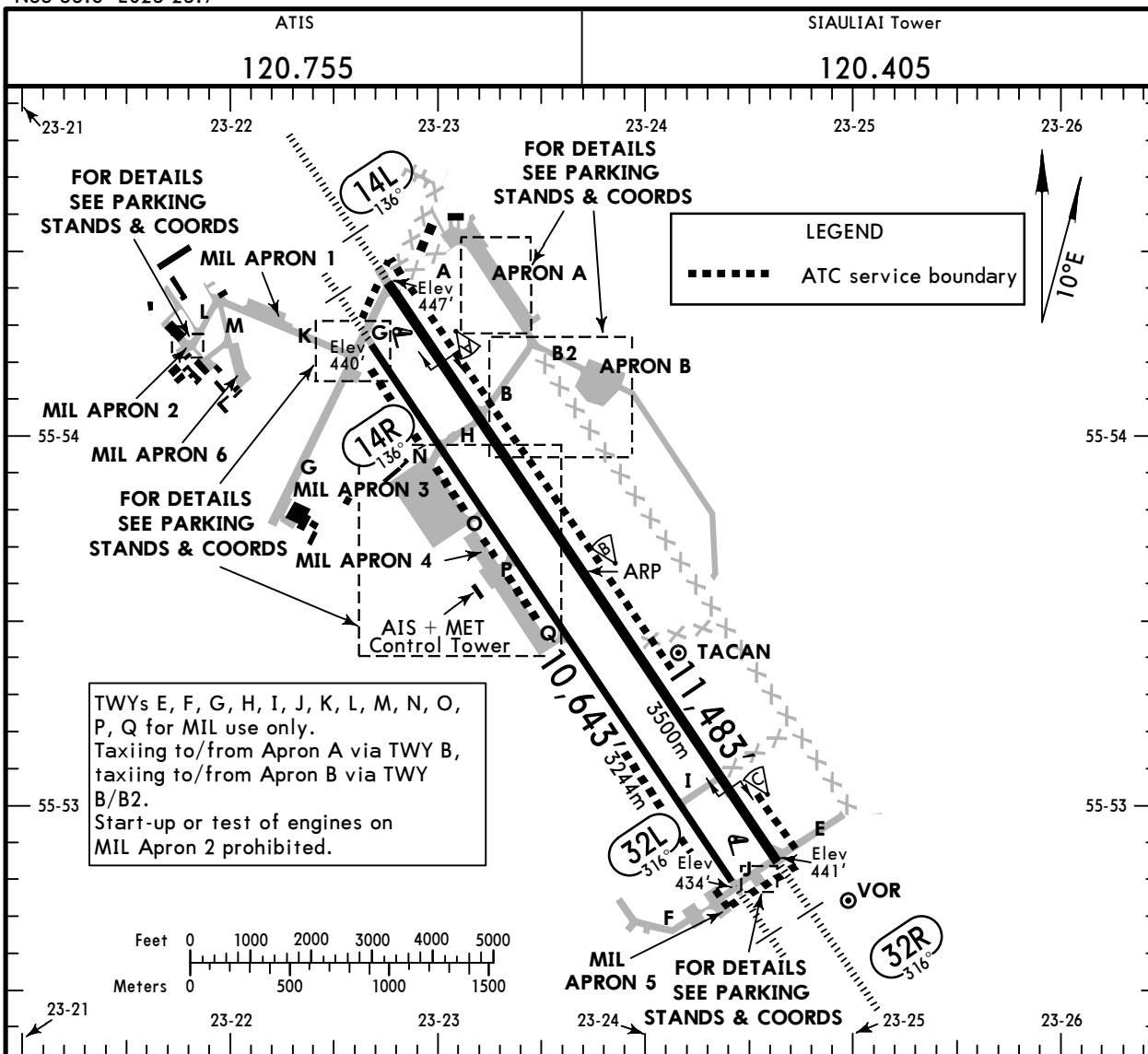
Apt Elev **447'**
N55 53.6 E023 23.7

JEPPesen

24 MAR 23 **(10-9)**

SIAULIAI, LITHUANIA

SIAULIAI INTL



TWYs E, F, G, H, I, J, K, L, M, N, O, P, Q for MIL use only.
Taxiing to/from Apron A via TWY B, taxiing to/from Apron B via TWY B/B2.
Start-up or test of engines on MIL Apron 2 prohibited.

ADDITIONAL RUNWAY INFORMATION

RWY	HIRL (60m) CL (30m) HIALS PAPI-L (3.0°) RVR	USABLE LENGTHS		TAKE-OFF	WIDTH
		Threshold	Glide Slope		
14L 32R			10,389' 3167m 10,511' 3204m	①	148' 45m
14R 32L	HIRL (50m) HIALS PAPI-L (3.0°)				105' 32m

① TAKE-OFF RUN AVAILABLE

RWY 14L:

From rwy head 11,483' (3500m)
twy B/H int 8694' (2650m)

RWY 32R:

From rwy head 11,483' (3500m)
twy I int 9678' (2950m)

② Military use only.

LOW VISIBILITY PROCEDURES (LVP)

LVP shall be executed when RVR is equal to or less than 600m with a tendency to decrease:

- the status of LVP is passed to pilots by means of ATIS broadcast or RTF:

"Low Visibility Procedures are in force"

- only one ACFT can be present on the maneuvering area of an aerodrome, when necessary, accompanied by ACFT Follow-me vehicle, and, in case of emergency, by emergency vehicles proceeding to the assistance of the ACFT in distress. Other vehicles, except the ones indicated above, are allowed to occupy the maneuvering area only when there is no ACFT on it.

LVP is cancelled when RVR is equal to or more than 600m with increasing tendency.

Std/State

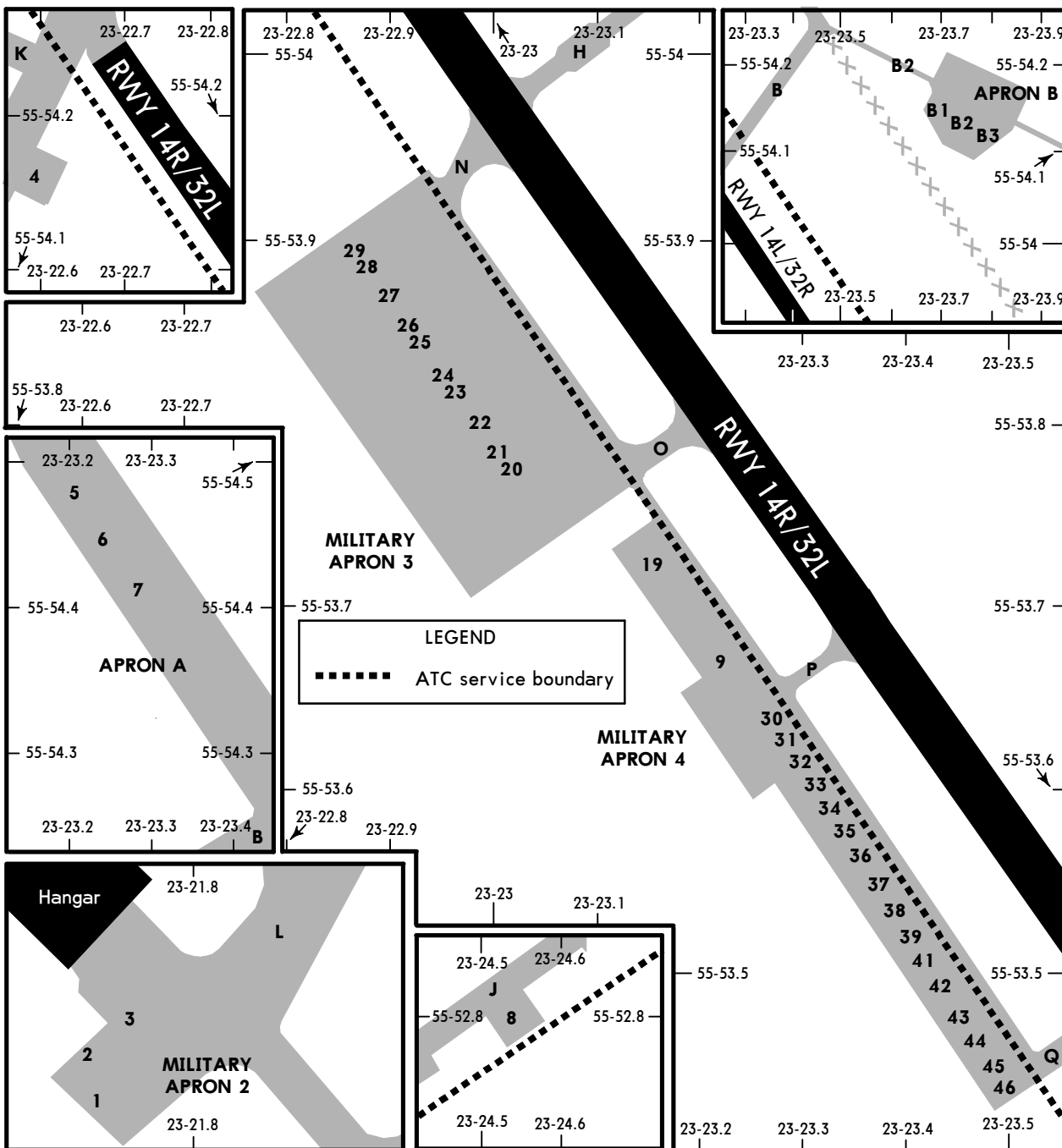
TAKE-OFF

Low Visibility Take-off		RL & RCLM		RL or CL		Adequate Vis Ref	
RL & CL & relevant RVR	RL & CL	DAY		NIGHT		DAY	NIGHT
		TDZ R150m	R200m	R300m			
Mid R150m							
Rollout R150m							

EYSA/SQQ

JEPPesen
24 MAR 23 (10-9A)

SIAULIAI, LITHUANIA
SIAULIAI INTL



PARKING STAND COORDINATES			
STAND No.	COORDINATES	ELEV	
1 thru 3	N55 54.2 E023 21.8	435	
4	N55 54.2 E023 22.6		
5	N55 54.5 E023 23.2		
6	N55 54.4 E023 23.2		
7	N55 54.4 E023 23.3		
8	N55 52.8 E023 24.5		
9, 19	N55 53.7 E023 23.2		
20 thru 24	N55 53.8 E023 23.0	435	
25	N55 53.8 E023 22.9		
26 thru 29	N55 53.9 E023 22.9		
30 thru 35	N55 53.6 E023 23.3		
36	N55 53.6 E023 23.4		
37 thru 42	N55 53.5 E023 23.4		
43, 44	N55 53.5 E023 23.5		
45, 46	N55 53.4 E023 23.5		
B1, B2	N55 54.1 E023 23.7		432
B3	N55 54.1 E023 23.8		432

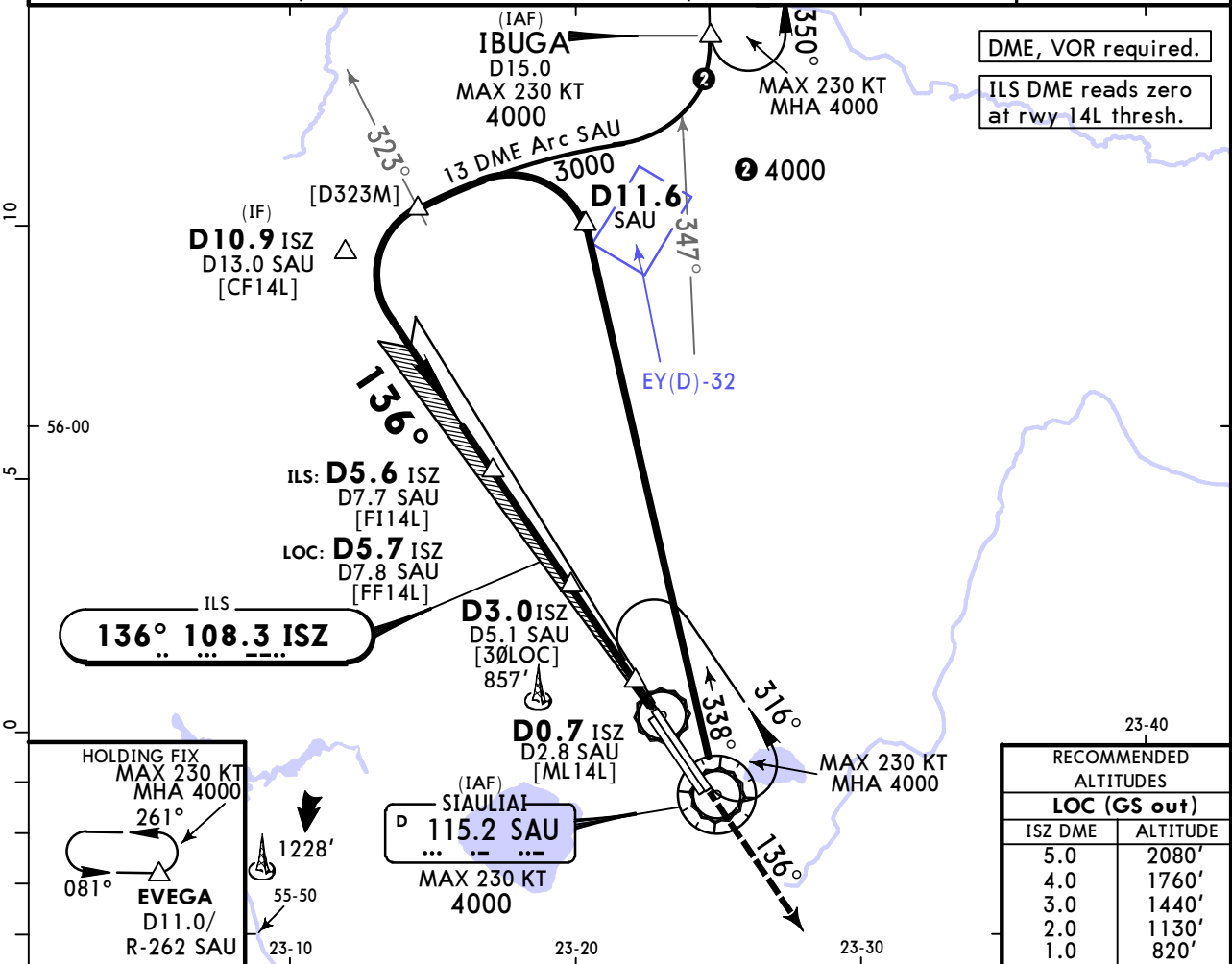
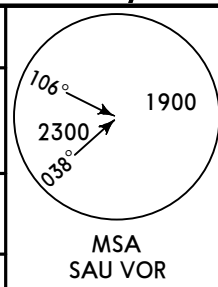
Start-up or test of engines on Mil Apron 2 prohibited. ACFT on stands 1 thru 3 must not start-up until placed on start-up position on Mil Apron 1 or TWY G. ACFT shall obtain start-up/push-back instructions from Tower prior to start-up. Stands 4,8 arm/disarm pads. Taxiing to and from Apron A via TWY B, taxiing to and from Apron B via TWY B/B2. Stand 5, 6 closed. Taxiing in Apron A till stand 7.

EYSA/SQQ SIAULIAI INTL

JEPPESSEN
17 MAR 23 **(11-1) Eff 23 Mar**

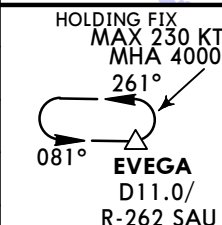
SIAULIAI, LITHUANIA ILS or LOC Rwy 14L

ATIS 120.755		SIAULIAI Approach 120.405		SIAULIAI Tower 120.405	
LOC ISZ 108.3	Final Apch Crs 136°	D5.6 ISZ 2300' (1853')	ILS DA(H) 647' (200')	Apt Elev 447'	Rwy 447'
MISSED APCH: Climb on 136° to 1900', then turn RIGHT (MAX 220 KT) to SAU VOR climbing to 4000'.					
Alt Set: hPa		Rwy Elev: 16 hPa	Trans level: By ATC		Trans alt: 5000'

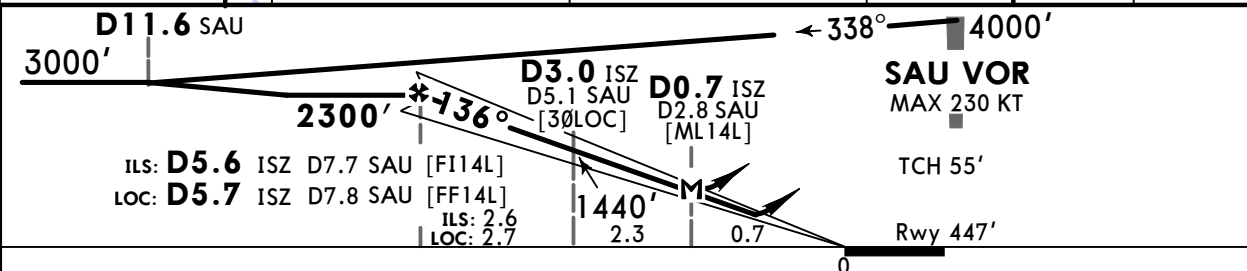


DME, VOR required.
ILS DME reads zero at rwy 14L thresh.

ILS **136° 108.3 ISZ**

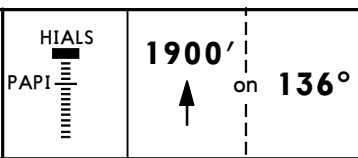


RECOMMENDED ALTITUDES	
LOC (GS out)	
ISZ DME	ALTITUDE
5.0	2080'
4.0	1760'
3.0	1440'
2.0	1130'
1.0	820'



Gnd speed-Kts	70	90	100	120	140	160	
GS	3.00°	372	478	531	637	743	849
MAP at D0.7 ISZ/D2.8 SAU							
D5.7 ISZ/D7.8 SAU to MAP	5.0	4:17	3:20	3:00	2:30	2:09	1:53

Timing not authorized for defining the MAP.



	STRAIGHT-IN LANDING			CIRCLE-TO-LAND			
	ILS		CDFA	LOC (GS out)		Max Kts	
	FULL	ALS out	with D3.0 ISZ/D5.1 SAU	w/o D3.0 ISZ/D5.1 SAU	MDA(H)		
A			DA/MDA(H) 830' (383')	DA/MDA(H) 1000' (553')		100	880' (433') 3 V1500m
B	1 R550m	R1200m	R1000m			135	1160' (713') 3 V2400m
C						180	1260' (813') V3600m
D						205	1260' (813') V3600m

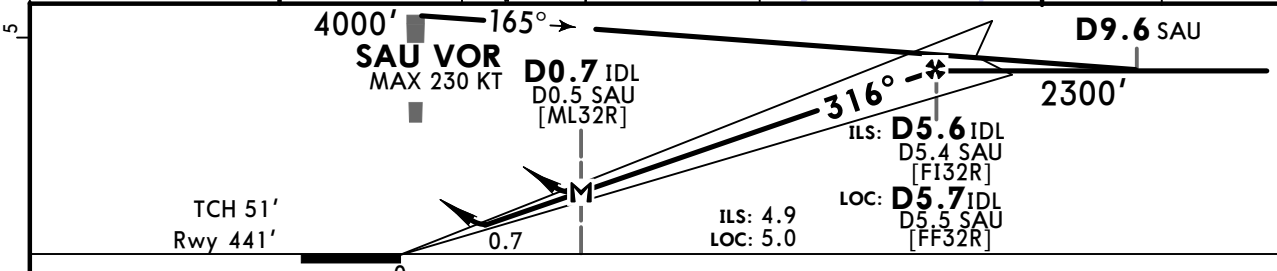
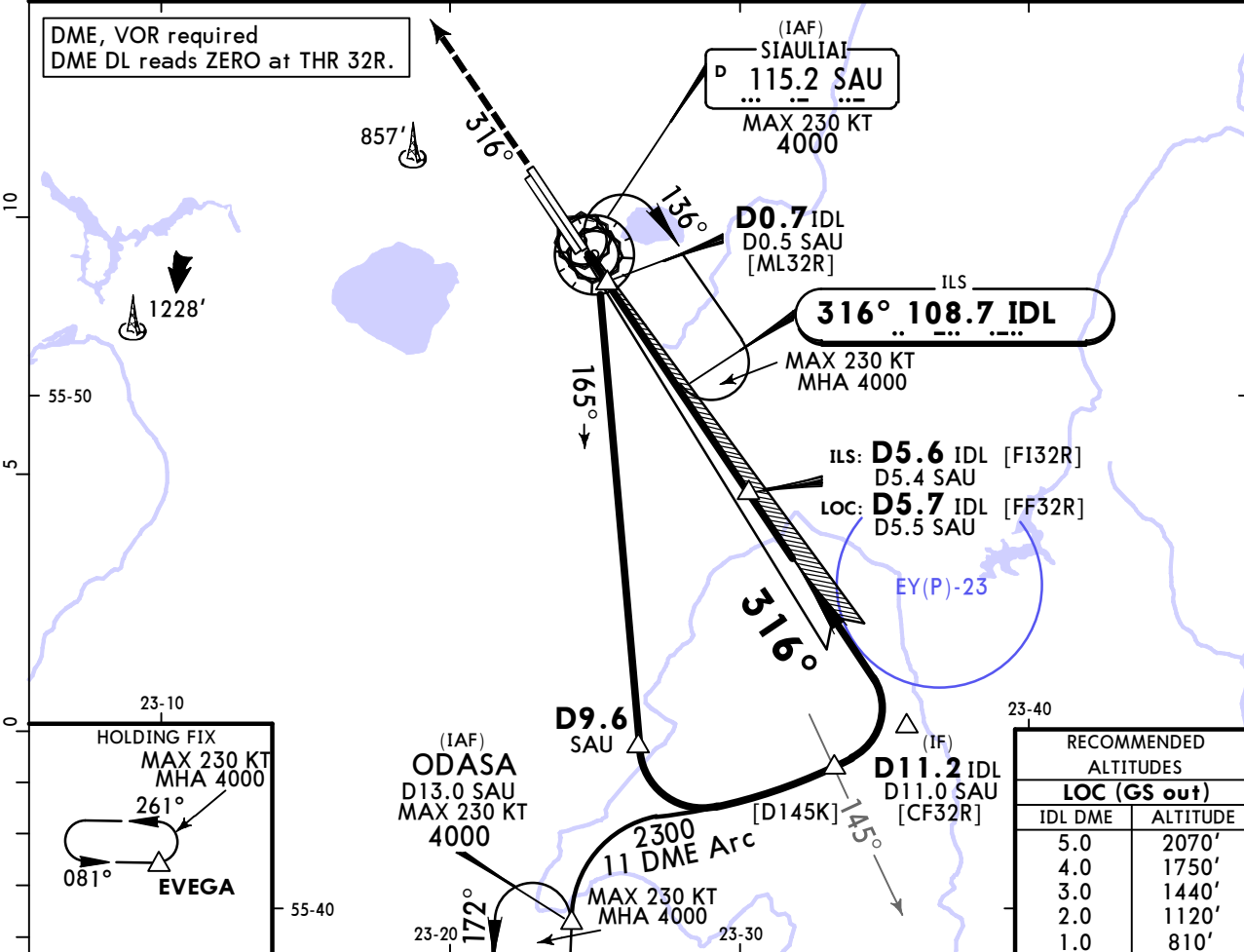
1 R750m when a Flight Director or Autopilot or HUD to DA is not used. **2** VNAV DA(H) in lieu of MDA(H) depends on operator policy. **3** or higher straight-in minimums.

EYSA/SQQ SIAULIAI INTL

JEPPESEN
17 MAR 23 **(11-2)** Eff 23 Mar

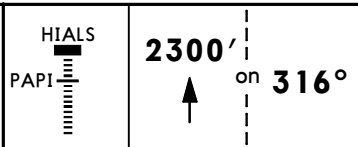
SIAULIAI, LITHUANIA ILS or LOC Rwy 32R

ATIS 120.755		SIAULIAI Approach 120.405		SIAULIAI Tower 120.405	
LOC IDL 108.7	Final Apch Crs 316°	D5.6 IDL 2300' (1859')	ILS DA(H) 641' (200')	Apt Elev 447'	Rwy 441'
MISSED APCH: Climb on 316° to 2300', then turn RIGHT (MAX 220 KT) to SAU VOR climbing to 4000'. Climb with 3.5% or more until passing 2300' due to airspace restriction.					
Alt Set: hPa		Rwy Elev: 16 hPa	Trans level: By ATC		



Gnd speed-Kts	70	90	100	120	140	160
GS	3.00°	372	478	531	637	743
MAP at D0.7 IDL/D0.5 SAU						
D5.7 IDL/D5.5 SAU to MAP	5.0	4:17	3:20	3:00	2:30	2:09

Timing not authorized for defining the MAP.



Std/State	STRAIGHT-IN LANDING		CIRCLE-TO-LAND	
	ILS	LOC (GS out)	ILS	LOC (GS out)
	DA(H) 641' (200')	CDFA 2 DA/MDA(H) 760' (319')		
	FULL	ALS out	ALS out	ALS out
A				Max Kts: 100
B	1 R550m	R1200m	R750m	135
C			R1400m	180
D				205
				MDA(H): 880' (433') V1500m
				1160' (713') V2400m
				1260' (813') V3600m
				1260' (813') V3600m

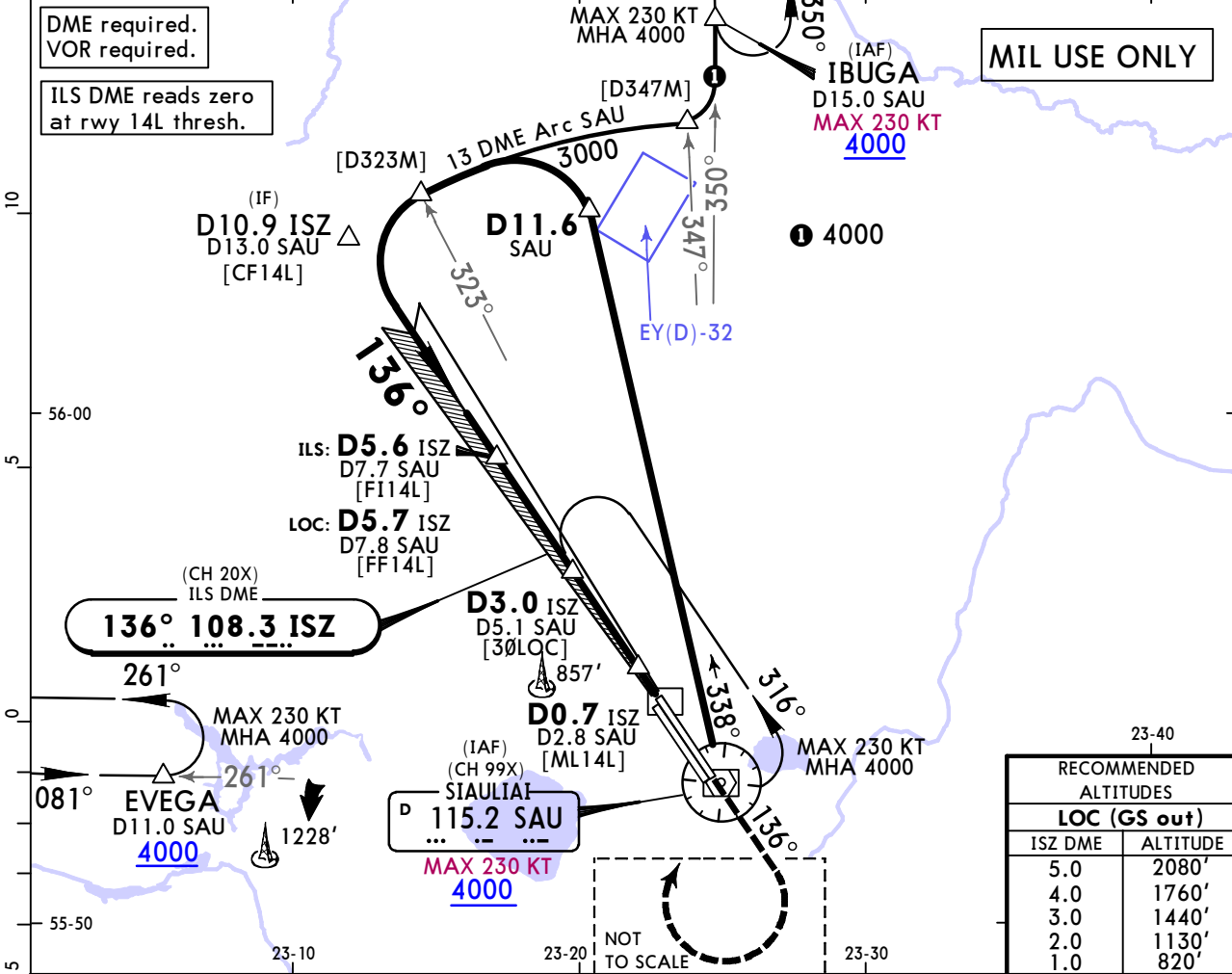
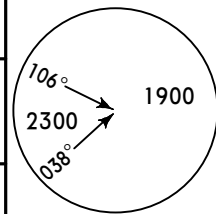
1 R750m when a Flight Director or Autopilot or HUD to DA is not used. **2** VNAV DA(H) in lieu of MDA(H) depends on operator policy.

EYSA/SQQ SIAULIAI INTL

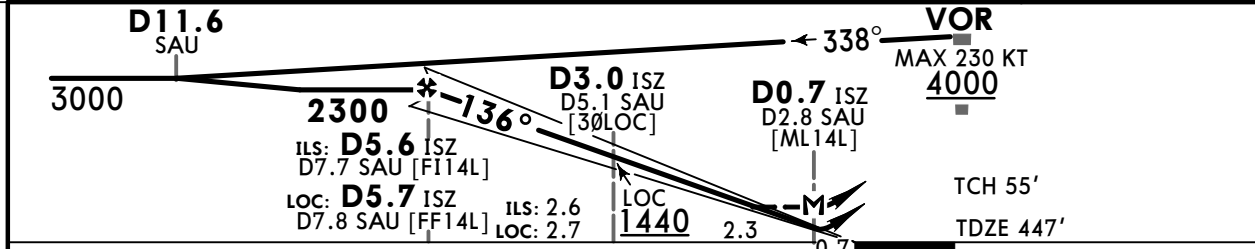
20 JAN 23
Eff 26 Jan **(11-3)**

SIAULIAI, LITHUANIA ILS Z or LOC Z Rwy 14L

ATIS 120.755		SIAULIAI Approach 120.405		SIAULIAI Tower 120.405	
LOC ISZ 108.3 (CH 20X)	Final Apch Crs 136°	D5.6 ISZ 2300' (1853')	ILS DA(H) Refer to Minimums	Apt Elev 447'	TDZE 447'
MISSED APCH: Climb on 136° to 1900', then turn RIGHT (MAX 220 KT) to SAU VOR climbing to 4000'.					
Alt Set: hPa		TDZE Elev: 16 hPa	Trans level: By ATC	Trans alt: 5000'	



RECOMMENDED ALTITUDES	
LOC (GS out)	
ISZ DME	ALTITUDE
5.0	2080'
4.0	1760'
3.0	1440'
2.0	1130'
1.0	820'



Gnd speed-Kts	70	90	100	120	140	160	HIALS PAPI	1900' on 136°
GS 3.00°	372	478	531	637	743	849		
MAP at D0.7 ISZ/D2.8 SAU								
D5.7 ISZ/D7.8 SAU to MAP	5.0	4:17	3:20	3:00	2:30	2:09	1:53	

Timing not authorized for defining the MAP.

Military			STRAIGHT-IN LANDING			CIRCLE-TO-LAND		
ILS DA(H) ABCD: 647' (200') E: 651' (204')			LOC (GS out) w/o D3.0 ISZ/D5.1 SAU MDA(H) 830' (383')			MDA(H) 1000' (553')		
FULL		ALS out	ALS out		ALS out	Max Kts	MDA(H)	
A	R550m	R1200m	R1000m	R1500m	R2000m		100	880' (433')
B					R2700m	135	1160' (713')	V2400m
C						180	1260' (813')	V3600m
D						205		
E						240	1350' (903')	V4300m

EYSA/SQQ SIAULIAI INTL

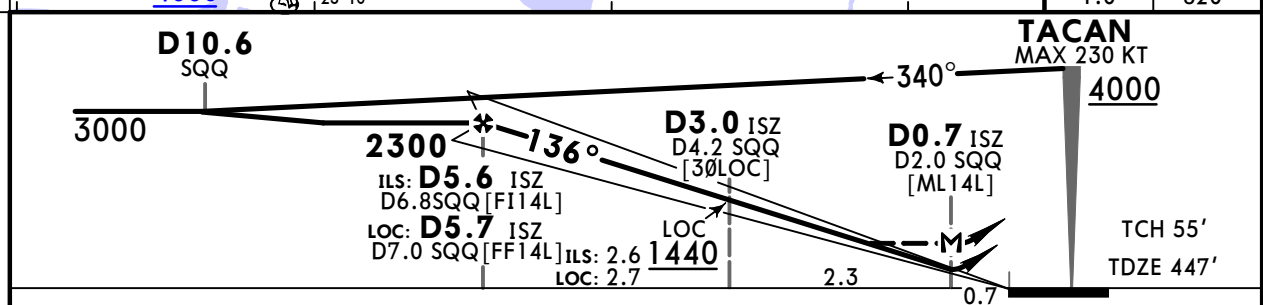
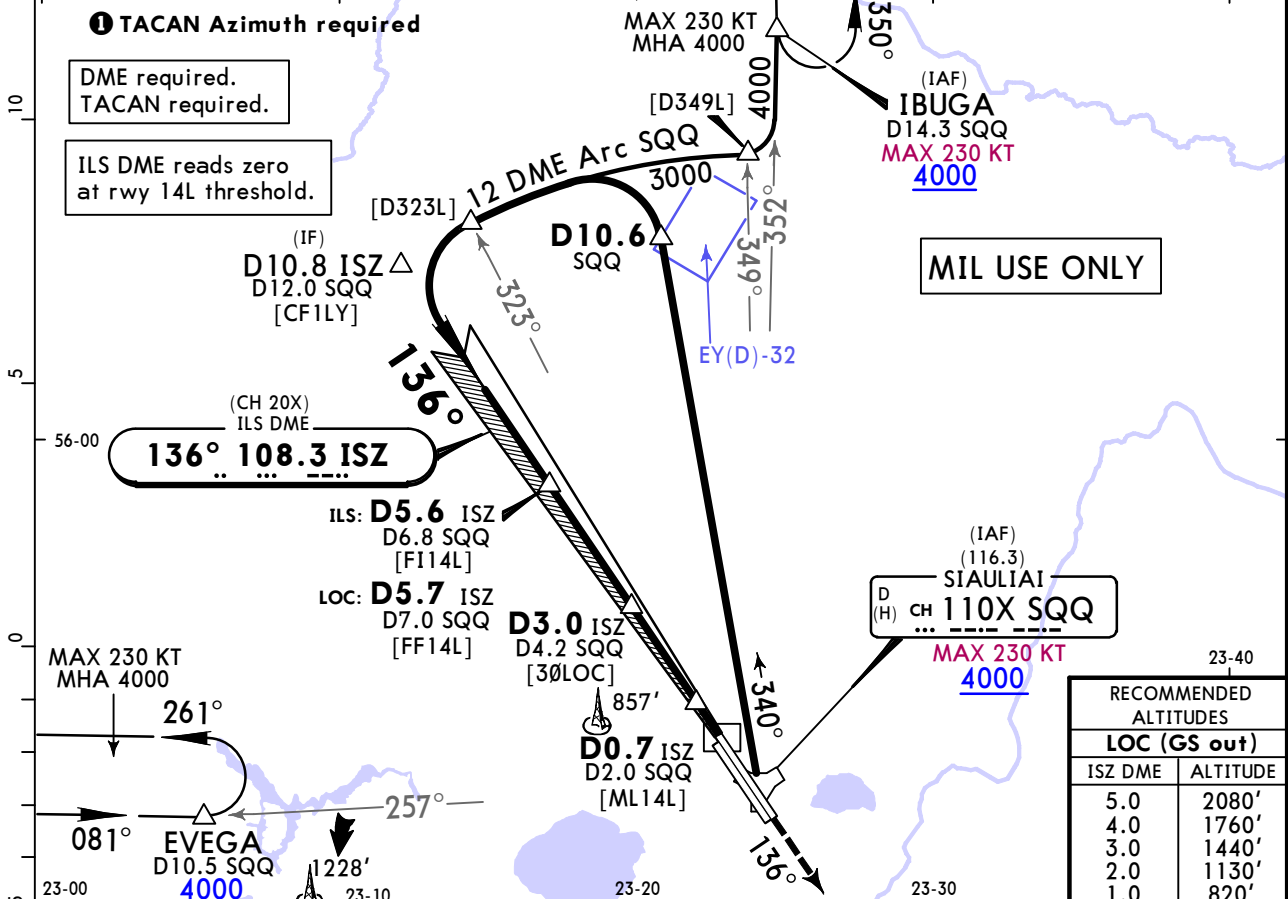
20 JAN 23
Eff 26 Jan

11-4

SIAULIAI, LITHUANIA

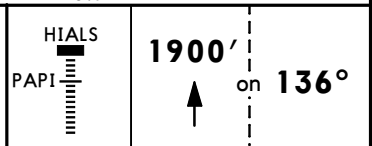
ILS Y or LOC Y Rwy 14L

ATIS 120.755		SIAULIAI Approach 120.405		SIAULIAI Tower 120.405	
LOC ISZ 108.3 (CH 20X)	Final Apch Crs 136°	D5.6 ISZ 2300' (1853')	ILS DA(H) Refer to Minimums	Apt Elev 447'	TDZE 447'
MISSED APCH: Climb on track 136° to 1900', then turn RIGHT (MAX 220 KT) to SQQ TACAN climbing to 4000'.					
Alt Set: hPa	TDZE Elev: 16 hPa	Trans level: By ATC	Trans alt: 5000'	MSA SQQ TACAN	



Gnd speed-Kts	70	90	100	120	140	160
GS	3.00°	372	478	531	637	743
MAP at D0.7 ISZ/D2.0 SQQ						
D5.7 ISZ/D7.0 SQQ to MAP	5.0	4:17	3:20	3:00	2:30	2:09

Timing not authorized for defining the MAP.



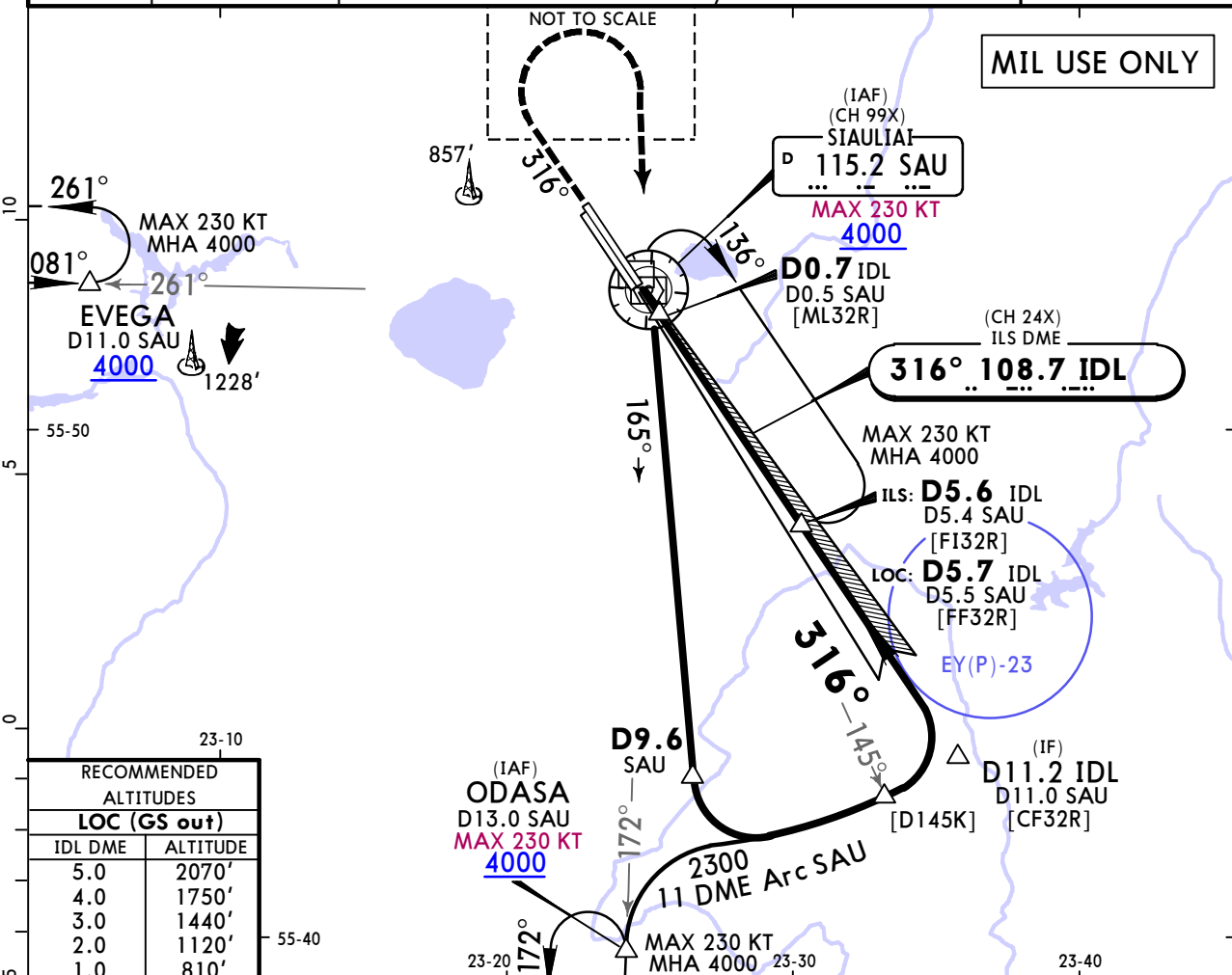
Military		STRAIGHT-IN LANDING			CIRCLE-TO-LAND		
ILS		LOC (GS out)			w/o D3.0 ISZ/D4.2 SQQ		
DA(H) ABCD: 647' (200') E: 651' (204')		MDA(H) 830' (383')			MDA(H) 1000' (553')		
FULL		ALS out		ALS out		ALS out	
A						Max Kts	MDA(H)
B			R1500m	R2000m	R2700m	100	880' (433') V1500m
C	R550m	R1200m	R1000m			135	1160' (713') V2400m
D			R1700m	R2200m	R2900m	180	1260' (813') V3600m
E						205	
						240	1350' (903') V4300m

EYSA/SQQ
SIAULIAI INTL

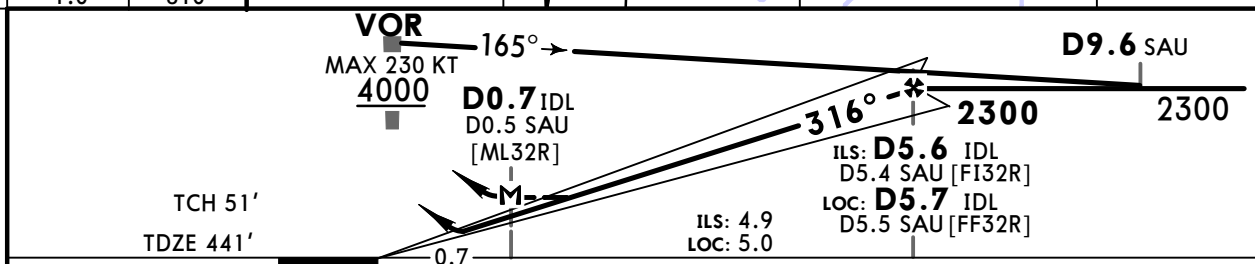
JEPPESEN
20 JAN 23
Eff 26 Jan (11-5)

SIAULIAI, LITHUANIA
ILS Z or LOC Z Rwy 32R

ATIS 120.755		SIAULIAI Approach 120.405		SIAULIAI Tower 120.405	
LOC IDL 108.7 (CH 24X)	Final Apch Crs 316°	D5.6 IDL 2300' (1859')	ILS DA(H) Refer to Minimums	Apt Elev 447' TDZE 441'	
MISSED APCH: Climb on 316° to 2300', then turn RIGHT (MAX 220 KT) to SAU VOR climbing to 4000'. Climb with 3.5% or more until passing 2300' due to airspace restriction.					
Alt Set: hPa TDZE Elev: 16 hPa Trans level: By ATC Trans alt: 5000'					
1. DME required. 2. VOR required. 3. ILS DME reads zero at rwy 32R thresh.					

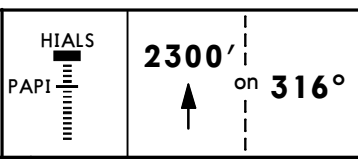


RECOMMENDED ALTITUDES	
LOC (GS out)	
IDL DME	ALTITUDE
5.0	2070'
4.0	1750'
3.0	1440'
2.0	1120'
1.0	810'



Gnd speed-Kts	70	90	100	120	140	160
GS	3.00°	372	478	531	637	849
MAP at D0.7 IDL/D0.5 SAU						
D5.7 IDL/D5.5 SAU to MAP	5.0	4:12	3:08	2:49	2:21	2:01

Timing not authorized for defining the MAP.



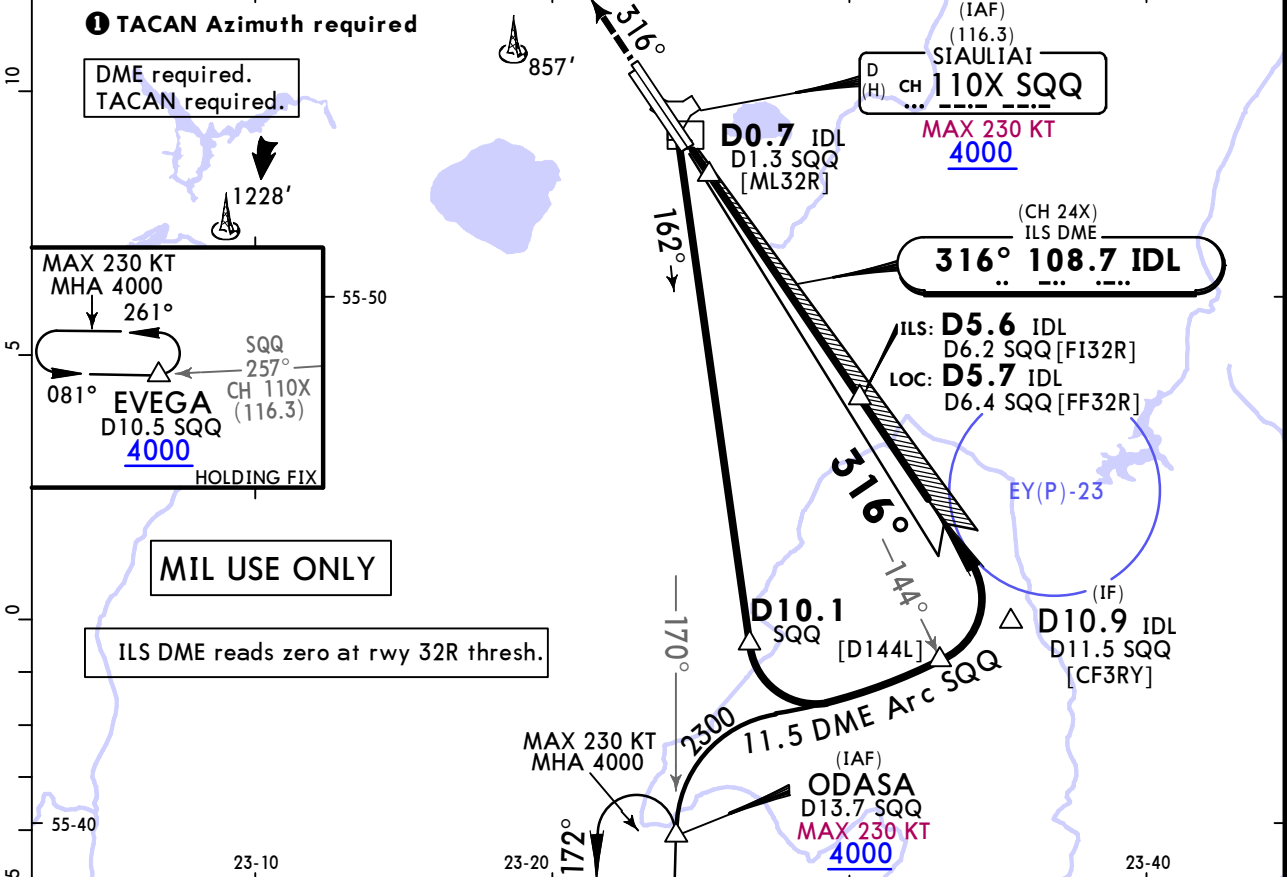
	Military STRAIGHT-IN LANDING				CIRCLE-TO-LAND	
	ILS		LOC (GS out)		Max Kts	MDA(H)
	DA(H)	ABCD	MDA(H)	760' (319')		
	FULL	ALS out	ALS out	ALS out	100	880' (433') V1500m
A					135	1160' (713') V2400m
B	R550m	R1200m	R750m	R1400m	180	1260' (813') V3600m
C					205	
D					240	1350' (903') V4300m
E						

EYSA/SQQ SIAULIAI INTL

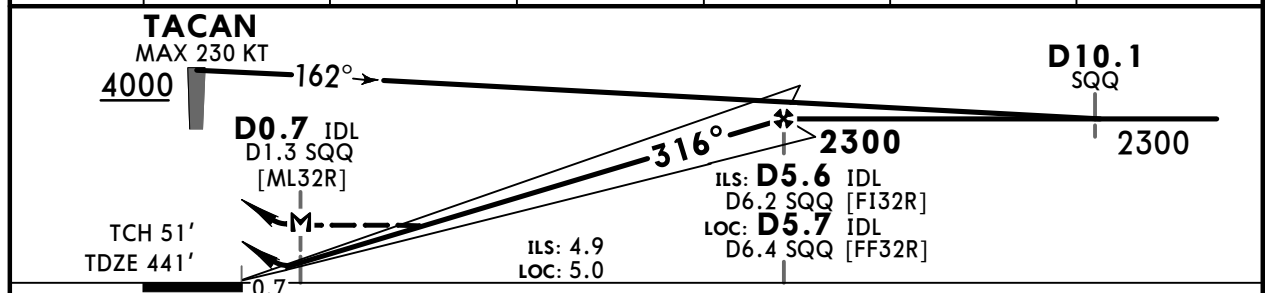
20 JAN 23
Eff 26 Jan

SIAULIAI, LITHUANIA ILS Y or LOC Y Rwy 32R

ATIS 120.755		SIAULIAI Approach 120.405		SIAULIAI Tower 120.405	
LOC IDL 108.7 (CH 24X)	Final Apch Crs 316°	D5.6 IDL 2300' (1859')	ILS DA(H) Refer to Minimums	Apt Elev 447'	
MISSED APCH: Climb on track 316° to 2300', then turn RIGHT (MAX 220 KT) to SQQ TACAN climbing to 4000'. Climb with 3.5% or more until passing 2300' due to airspace restriction.					
Alt Set: hPa		TDZE Elev: 16 hPa	Trans level: By ATC	Trans alt: 5000'	MSA SQQ TACAN



LOC (GS out)	IDL DME ALTITUDE	1.0	2.0	3.0	4.0	5.0
		810'	1120'	1440'	1750'	2070'



Gnd speed-Kts	70	90	100	120	140	160	HIALS PAPI 2300' on 316°
GS	3.00°	372	478	531	637	849	
MAP at D0.7 IDL/D1.3 SQQ							
D5.7 IDL/D6.4 SQQ to MAP	5.0	4:17	3:20	3:00	2:30	2:09	1:53
Timing not authorized for defining the MAP.							

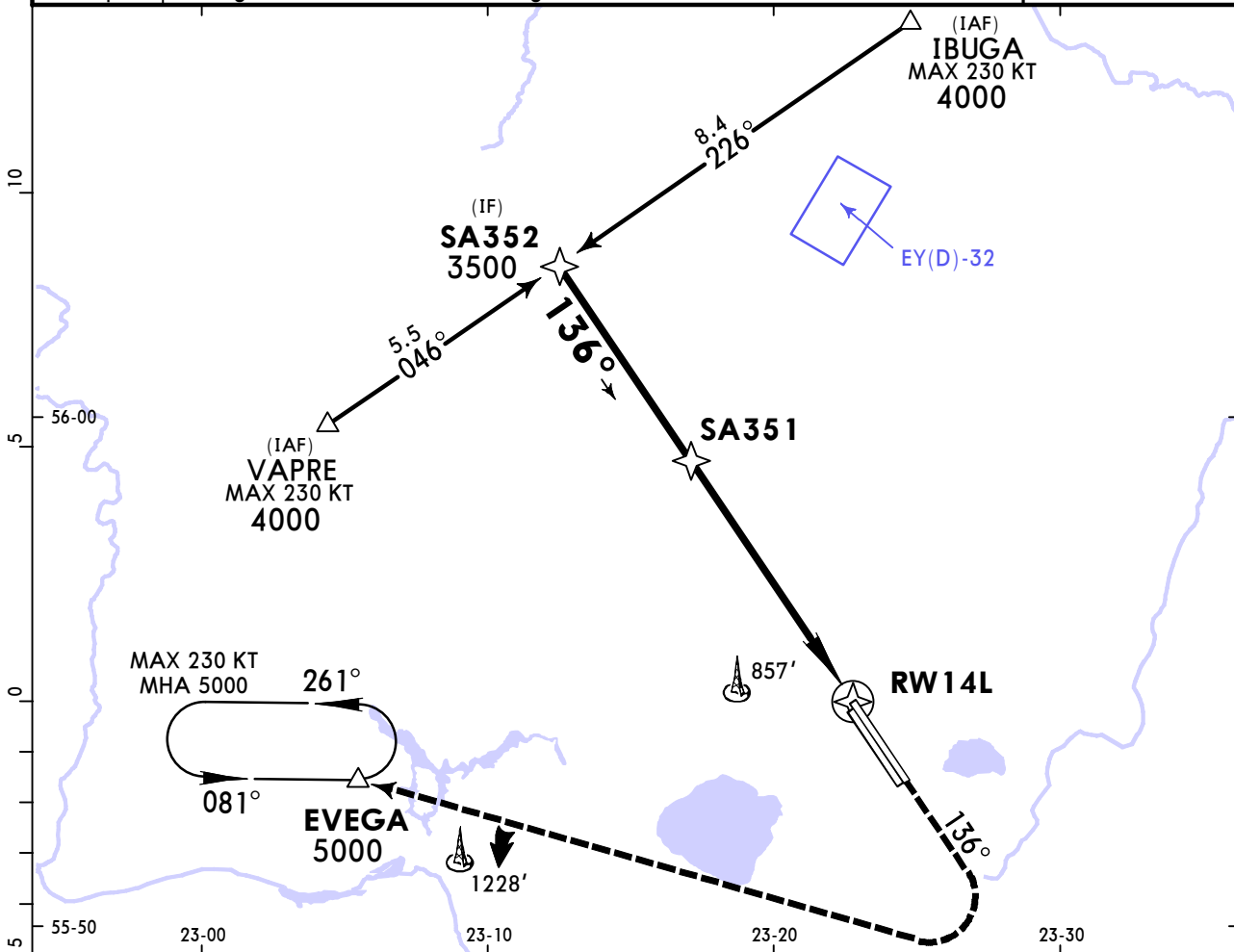
Military		STRAIGHT-IN LANDING		CIRCLE-TO-LAND	
ILS DA(H) ABCD: 641' (200') E: 652' (211')		LOC (GS out) MDA(H) 760' (319')			
FULL		ALS out		Max Kts	MDA(H)
A				100	880' (433') V1500m
B				135	1160' (713') V2400m
C	R550m	R1200m	R750m	180	1260' (813') V3600m
D				205	
E				240	1350' (903') V4300m

EYSA/SQQ SIAULIAI INTL

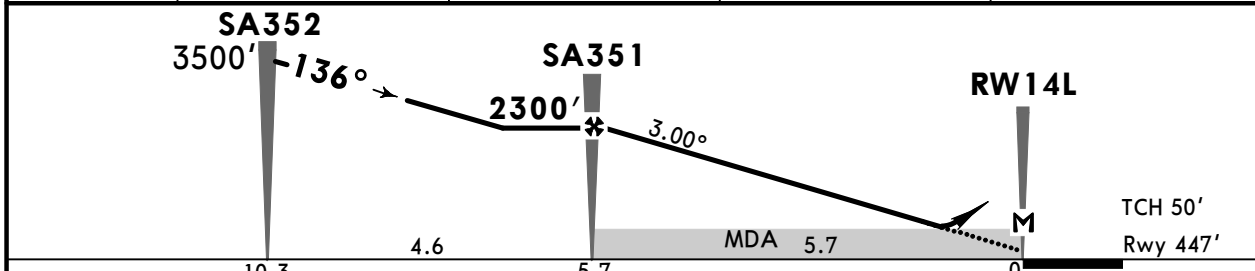
JEPPESEN
17 MAR 23 (12-1) Eff 23 Mar

SIAULIAI, LITHUANIA RNP Rwy 14L

ATIS 120.755		SIAULIAI Approach 120.405		SIAULIAI Tower 120.405		<p>MSA ARP</p>
RNAV	Final Apch Crs 136°	SA351 2300' (1853')	DA/MDA(H) 990' (543')	Apt Elev 447'	Rwy 447'	
MISSED APCH: Climb on 136° to 2300', then turn RIGHT (MAX 230 KT), direct to EVEGA climbing to 5000'.						
Alt Set: hPa		Rwy Elev: 16 hPa	Trans level: By ATC		Trans alt: 5000'	
RNP Apch.		Timing not authorized for defining the MAP.				



DIST to RW14L	5.0	4.0	3.0	2.0
ALTITUDE	2080'	1760'	1450'	1130'



Gnd speed-Kts	70	90	100	120	140	160	
Descent Angle 3.00°	372	478	531	637	743	849	
MAP at RW14L							
SA351 to MAP	5.7	4:53	3:48	3:25	2:51	2:27	

PANS OPS	Std/State		STRAIGHT-IN LANDING				CIRCLE-TO-LAND	
			LNAV CDFA					
			DA/MDA(H) 990' (543')					
			ALS out				Max Kts	
	A	R1500m				100	880' (433')	2 V1500m
B					135	1160' (713')	V2400m	
C	R1700m		R2400m		180	1260' (813')	V3600m	
D					205	1260' (813')	V3600m	

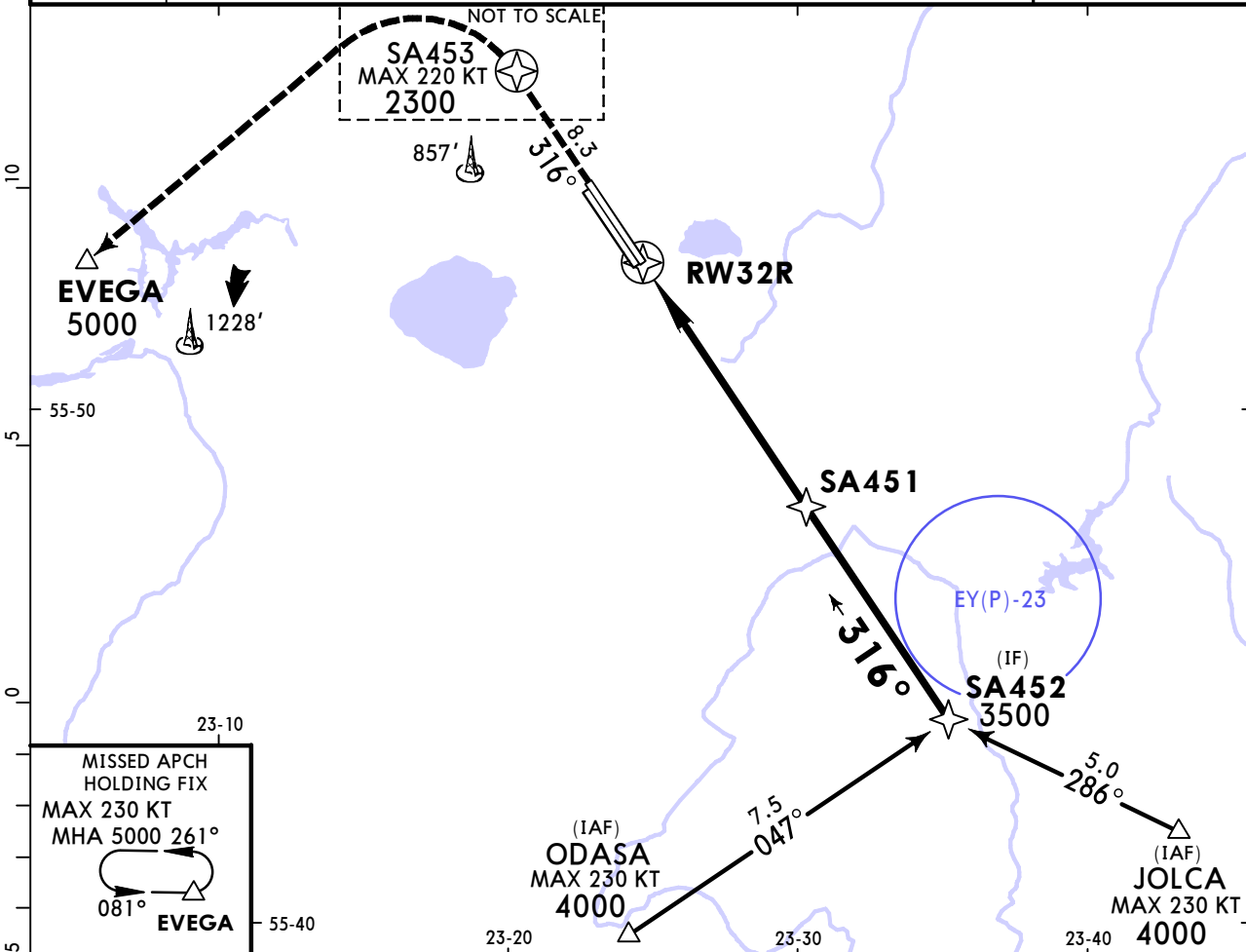
1 VNAV DA(H) in lieu of MDA(H) depends on operator policy. 2 or higher straight-in minimums.
CHANGES: EY(D)-32 established. © JEPPESEN, 2020, 2023. ALL RIGHTS RESERVED.

EYSA/SQQ SIAULIAI INTL

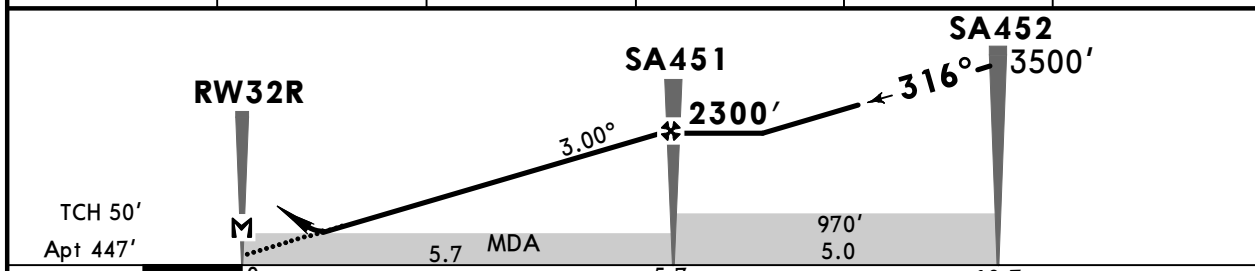
JEPPESEN
17 MAR 23 (12-2) Eff 23 Mar

SIAULIAI, LITHUANIA
RNP Rwy 32R

ATIS 120.755		SIAULIAI Approach 120.405		SIAULIAI Tower 120.405		
RNAV	Final Apch Crs 316°	SA451 2300' (1853')	DA/MDA(H) 800' (353')	Apt Elev 447'		
MISSED APCH: Climb on 316° to SA453 to 2300', then turn LEFT (MAX 220 KT), direct to EVEGA climbing to 5000'.						
Alt Set: hPa		Apt Elev: 16 hPa		Trans level: By ATC		Trans alt: 5000'
RNP Apch. Timing not authorized for defining the MAP.						



DIST to RW32R	1.0	2.0	3.0	4.0	5.0
ALTITUDE	820'	1130'	1450'	1760'	2080'



Gnd speed-Kts	70	90	100	120	140	160	HIALS PAPI 2300' on 316° SA453
Descent Angle 3.00°	372	478	531	637	743	849	
MAP at RW32R							
SA451 to MAP	5.7	4:53	3:48	3:25	2:51	2:27	2:08

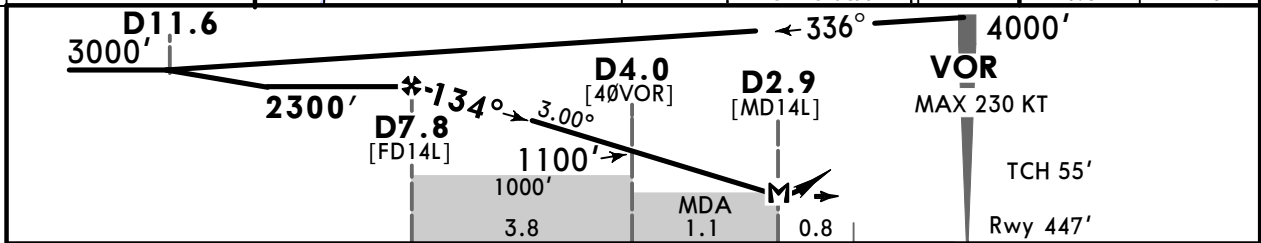
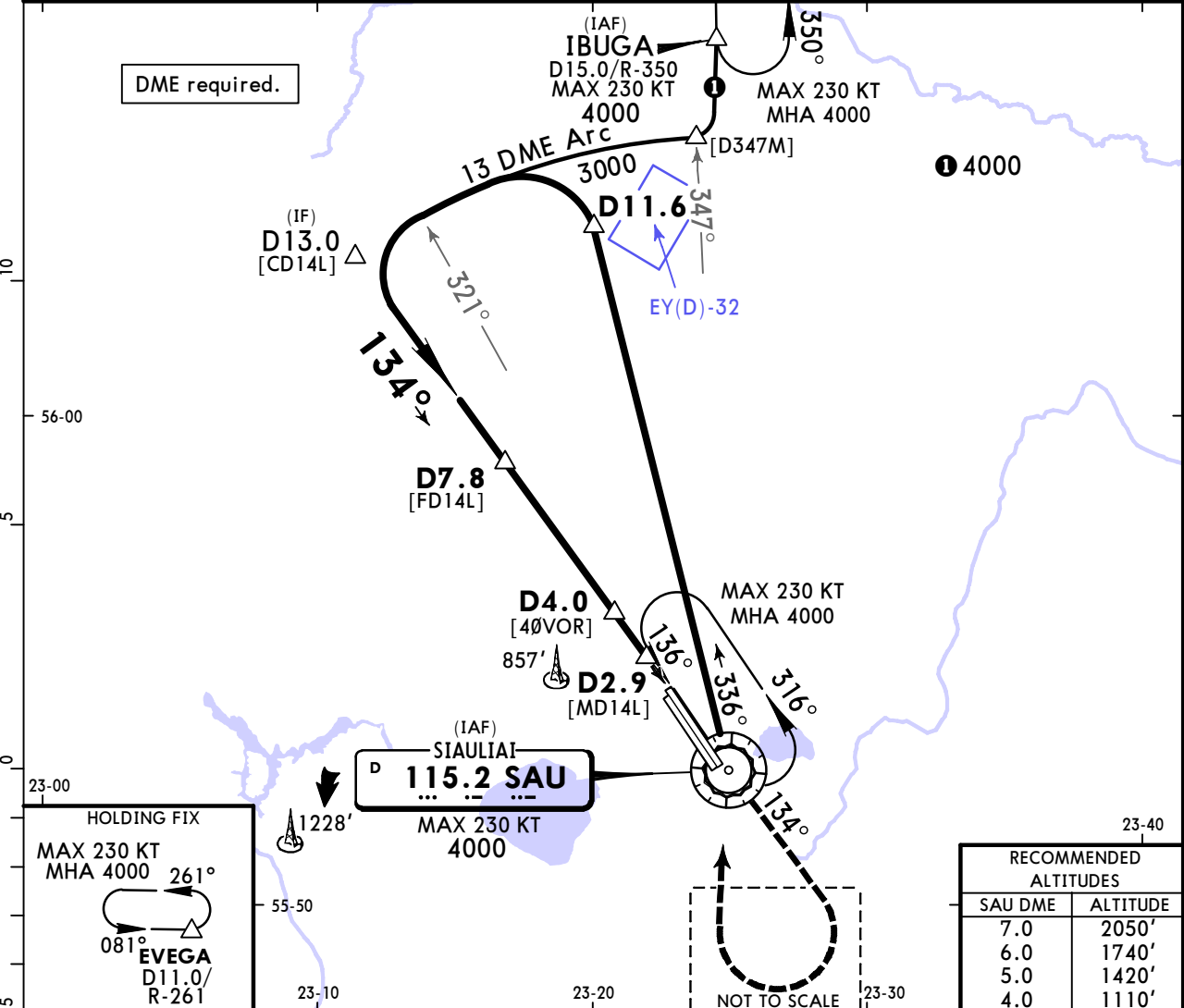
PANS OPS	Std/State	STRAIGHT-IN LANDING		CIRCLE-TO-LAND		
		LNAV CDFA				
		DA/MDA(H) 800' (353')				
		ALS out		Max Kts	MDA(H)	
	A	R900m	R1500m		100	880' (433')
B	R1500m		135	1160' (713')	V2400m	
C	R1600m		180	1260' (813')	V3600m	
D	R1600m		205	1260' (813')	V3600m	

EYSA/SQQ
SIAULIAI INTL

JEPPESEN
17 MAR 23 **(13-1)** Eff 23 Mar

SIAULIAI, LITHUANIA
VOR Rwy 14L

ATIS 120.755		SIAULIAI Approach 120.405		SIAULIAI Tower 120.405		
VOR SAU 115.2	Final Apch Crs 134°	D7.8 2300' (1853')	DA/MDA(H) (CONDITIONAL) 840' (393')	Apt Elev 447'	Rwy 447'	
MISSED APCH: Climb via VOR on R-134 to 2300', then turn RIGHT (MAX 220 KT) to VOR climbing to 4000'.						
Alt Set: hPa		Rwy Elev: 16 hPa		Trans level: By ATC		Trans alt: 5000'



Gnd speed-Kts	70	90	100	120	140	160	HIALS PAPI	SAU 115.2 ↑ 2300' ↑ SAU on 115.2 R-134
Descent Angle 3.00°	372	478	531	637	743	849		
MAP at D2.9								
D7.8 to MAP	4.9	4:12	3:16	2:56	2:27	1:50		

Timing not authorized for defining the MAP.

	Std/State	STRAIGHT-IN LANDING		CIRCLE-TO-LAND	
		With D4.0 CDFA DA/MDA(H) 840' (393')	W/o D4.0 non-CDFA MDA(H) 1000' (553')	Max Kts	MDA(H)
A	R1100m	ALS out	ALS out	100	880' (433') 2 V1500m
B		R1500m	R2000m	135	1160' (713') 2 V2400m
C		R1800m	R2200m	180	1260' (813') V3600m
D		R1800m	R2200m	205	1260' (813') V3600m

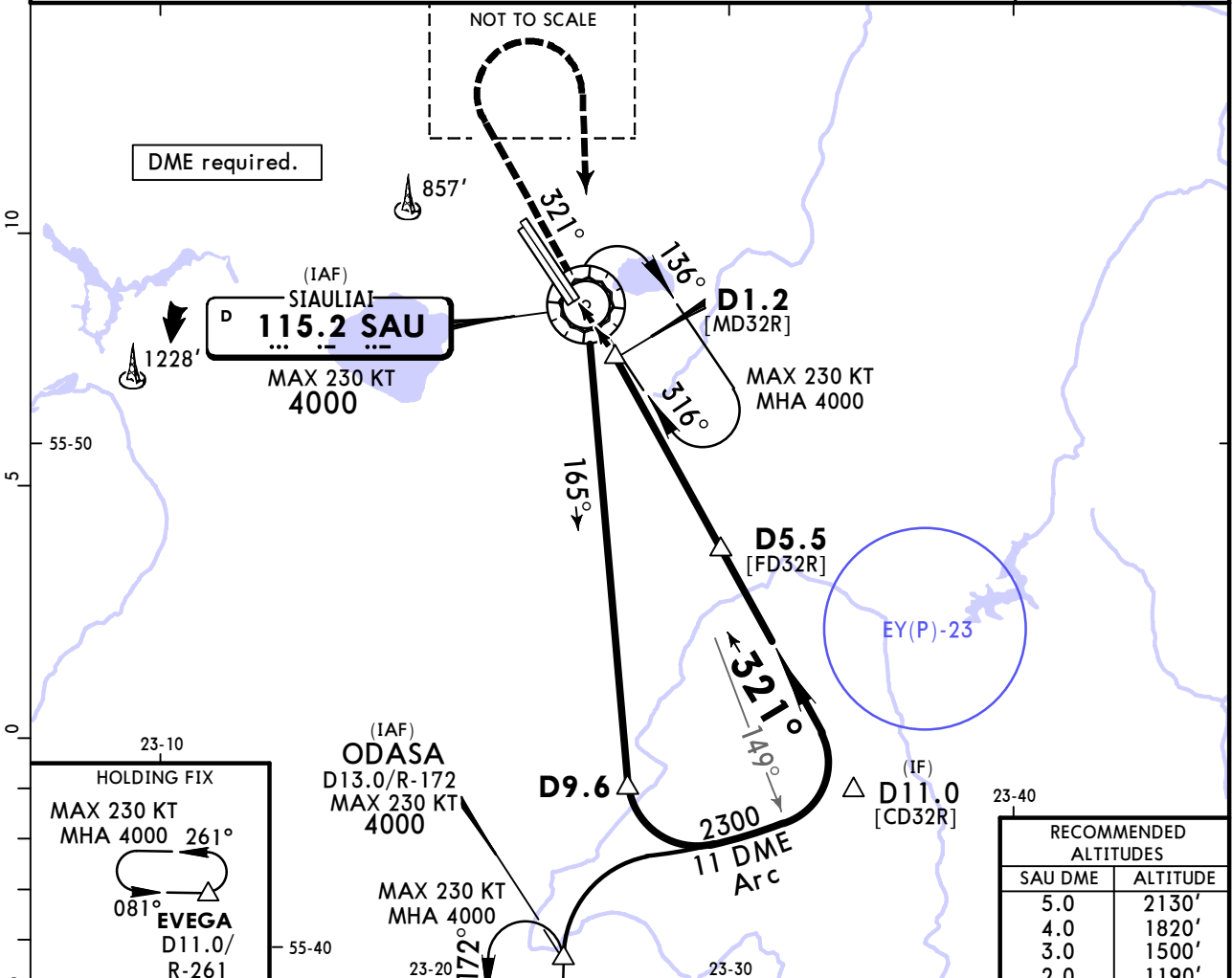
1 VNAV DA(H) in lieu of MDA(H) depends on operator policy. **2** or higher straight-in minimums.
CHANGES: EY(D)-32 established. © JEPPESEN, 2000, 2023. ALL RIGHTS RESERVED.

EYSA/SQQ SIAULIAI INTL

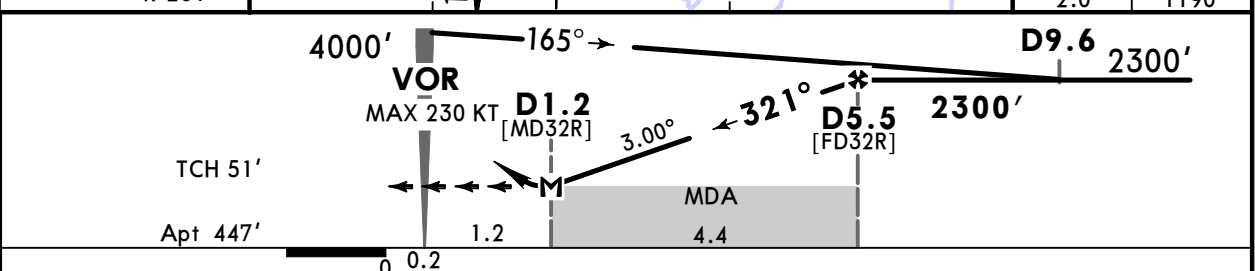
JEPPESEN
17 MAR 23 **(13-2)** Eff 23 Mar

SIAULIAI, LITHUANIA VOR Rwy 32R

ATIS 120.755		SIAULIAI Approach 120.405		SIAULIAI Tower 120.405	
VOR SAU 115.2	Final Apch Crs 321°	D5.5 2300' (1853')	MDA(H) 930' (483')	Apt Elev 447'	
MISSED APCH: Climb via VOR on R-321 to 2300', then turn RIGHT (MAX 210 KT) to VOR climbing to 4000'. Climb with 3.5% or more until passing 2300' due to airspace restriction.					
Alt Set: hPa	Apt Elev: 16 hPa	Trans level: By ATC	Trans alt: 5000'	MSA SAU VOR	



RECOMMENDED ALTITUDES	
SAU DME	ALTITUDE
5.0	2130'
4.0	1820'
3.0	1500'
2.0	1190'



Gnd speed-Kts	70	90	100	120	140	160
Descent Angle 3.00°	372	478	531	637	743	849
MAP at D1.2						
D5.5 to MAP	4.4	3:46	2:56	2:38	2:12	1:53

Timing not authorized for defining the MAP.

HIALS
PAPI

SAU 115.2 2300' SAU on 115.2 R-321

PANS OPS	Std/State	STRAIGHT-IN LANDING non-CDFA	CIRCLE-TO-LAND
		MDA(H) 930' (483')	
A		ALS out	Max Kts: 100, MDA(H): 880' (433'), V1500m
B	R1700m		135, 1160' (713'), V2400m
C	R1900m	R2600m	180, 1260' (813'), V3600m
D			205, 1260' (813'), V3600m

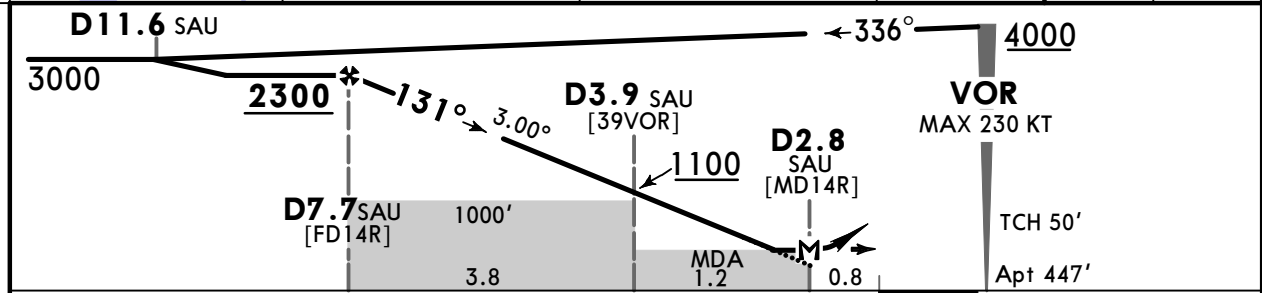
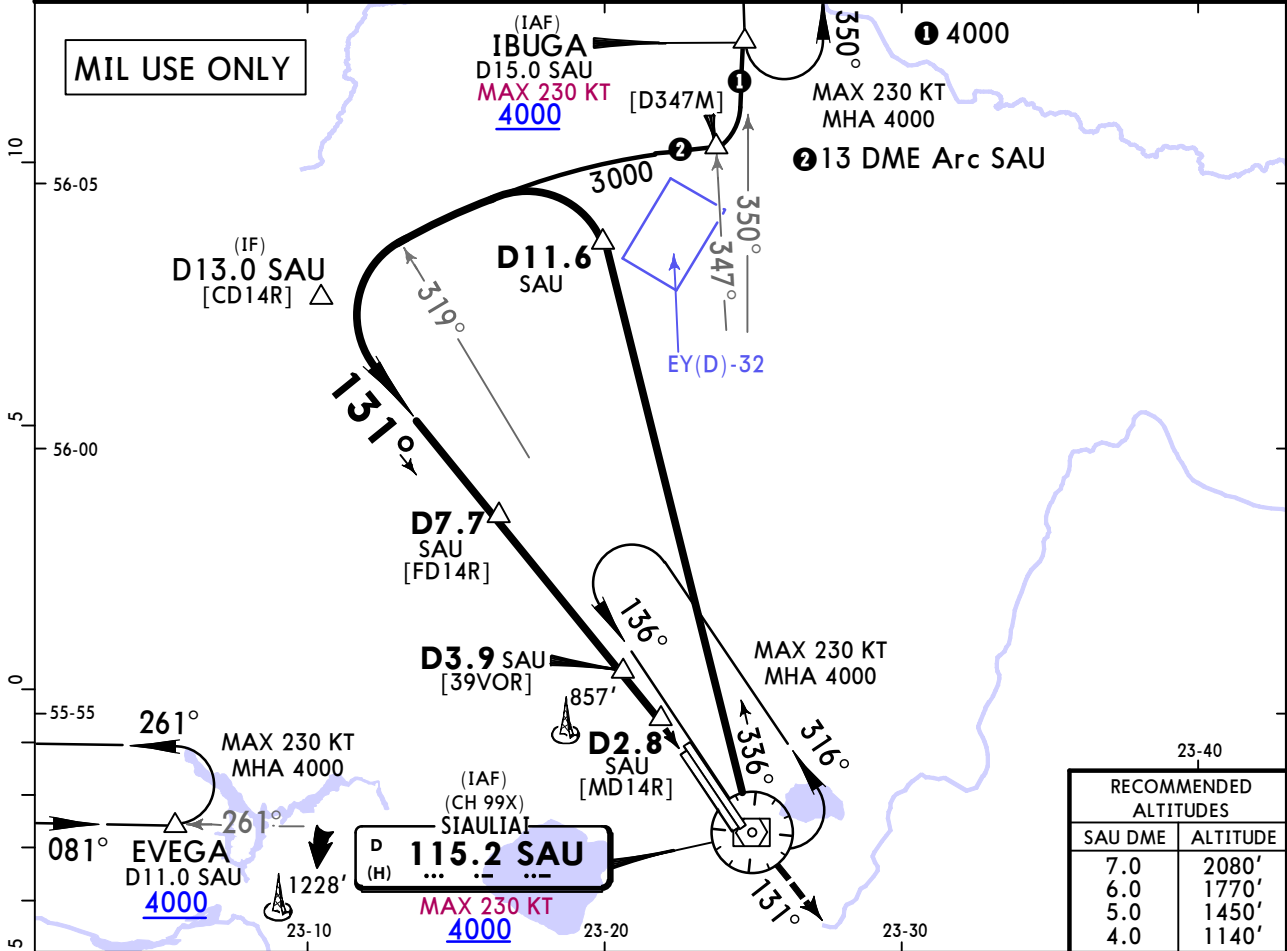
1 or higher straight-in minimums.

EYSA/SQQ
SIAULIAI INTL

JEPPESEN
20 JAN 23 **(13-3)** Eff 26 Jan

SIAULIAI, LITHUANIA
VOR Rwy 14R

ATIS 120.755		SIAULIAI Approach 120.405		SIAULIAI Tower 120.405	
VOR DME SAU 115.2 (CH 99X)	Final Apch Crs 131°	D7.7 SAU 2300 (1853')	MDA(H) (CONDITIONAL) 840' (393')	Apt Elev 447'	
MISSED APCH: Climb via SAU VOR on R-131 to 2000', then turn RIGHT (MAX 230 KT) to SAU VOR climbing to 4000'.					
Alt Set: hPa		Apt Elev: 16 hPa		Trans level: By ATC	
DME required.					



Gnd speed-Kts	70	90	100	120	140	160	HIALS PAPI	SAU 115.2 (CH 99X)	2000'	SAU 115.2 on (CH 99X) R-131
Descent Angle	3.00°	372	478	531	637	743		849		
MAP at D2.8 SAU										
D7.7 SAU to MAP	4.9	4:12	3:16	2:56	2:27	2:06		1:50		

Timing not authorized for defining the MAP.

		STRAIGHT-IN LANDING		CIRCLE-TO-LAND	
		w/o D3.9 SAU			
		MDA(H) 840' (393')	MDA(H) 1000' (553')		
		ALS out	ALS out	Max Kts	MDA(H)
A	R1100m	R1500m	R2000m	100	880' (433') V1500m
B		R1800m	R2200m	135	1160' (713') V2400m
C	R1100m	R1800m	R2200m	180	1260' (813') V3600m
D				205	1350' (903') V4300m
E				240	

CHANGES: MSA, EY(D)-32 established, altitudes.

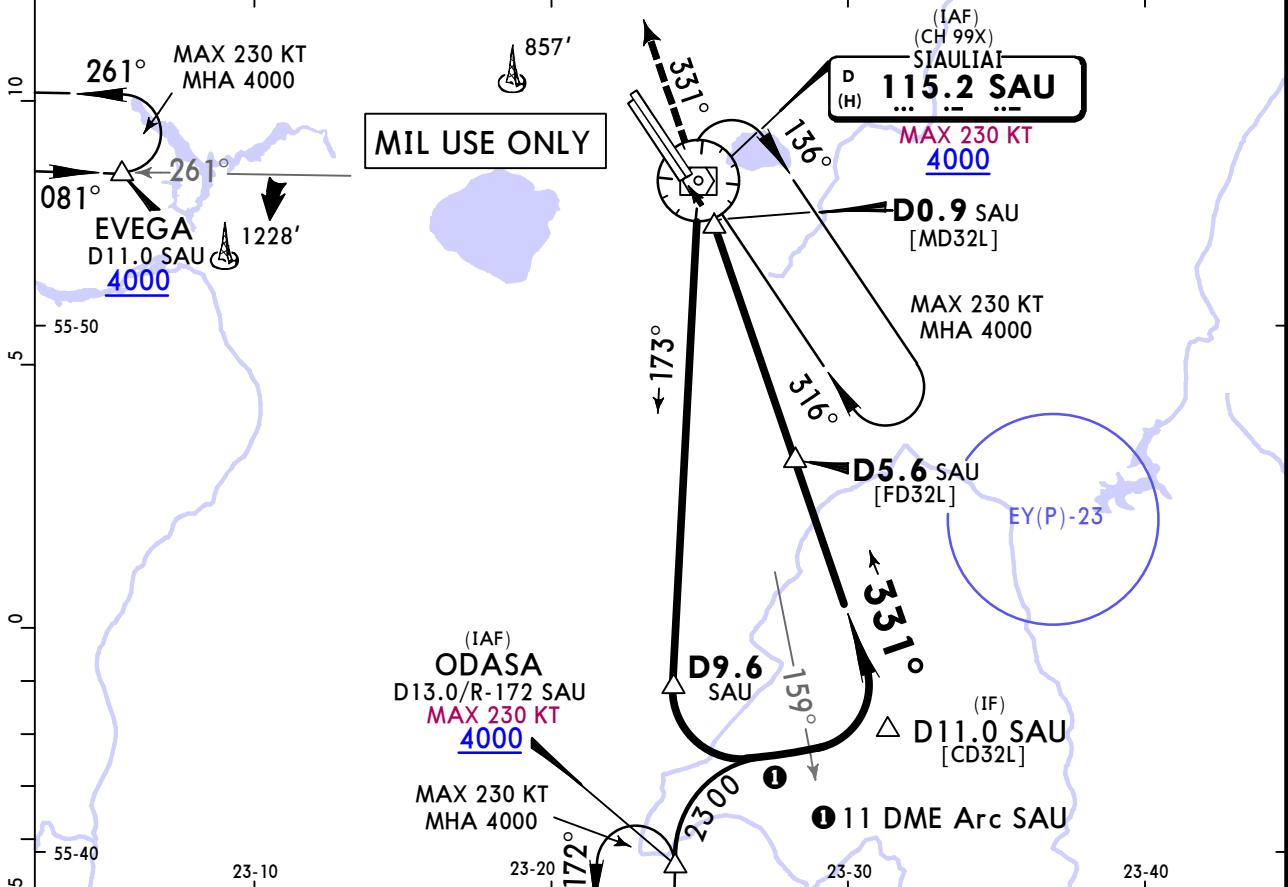
© JEPPESEN, 2012, 2023. ALL RIGHTS RESERVED.

EYSA/SQQ SIAULIAI INTL

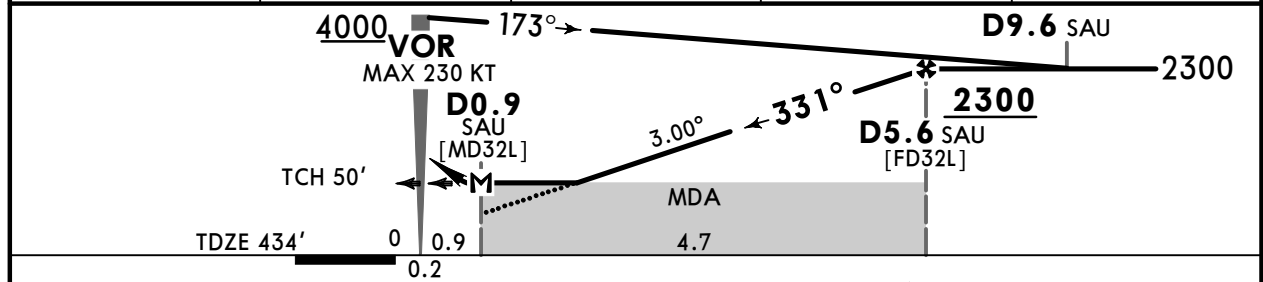
JEPPESEN
20 JAN 23 **(13-4)** Eff 26 Jan

SIAULIAI, LITHUANIA VOR Rwy 32L

ATIS 120.755		SIAULIAI Approach 120.405			SIAULIAI Tower 120.405	
VOR DME SAU 115.2 (CH 99X)	Final Apch Crs 331°	D5.6 SAU 2300 (1866')	MDA(H) 1050' (616')	Apt Elev 447'	TDZE 434'	
MISSED APCH: Climb via SAU VOR on R-331 to 2300', then turn RIGHT (MAX 230 KT, min bank angle 25°) to SAU VOR climbing to 4000'. Climb with 3.5% or more until passing 2300' due to airspace restriction.						
Alt Set: hPa		TDZE Elev: 16 hPa	Trans level: By ATC	Trans alt: 5000'		
DME required.						



SAU DME	2.0	3.0	4.0	5.0
ALTITUDE	1180'	1500'	1810'	2130'



Gnd speed-Kts	70	90	100	120	140	160	HIALS PAPI	SAU 115.2 (CH 99X)	2300'	SAU 115.2 (CH 99X)	
Descent Angle	3.00°	372	478	531	637	743		849	↑	↑	R-331
MAP at D0.9 SAU											
D5.6 SAU to MAP	4.7	4:02	3:08	2:49	2:21	2:01		1:46			

Timing not authorized for defining the MAP.

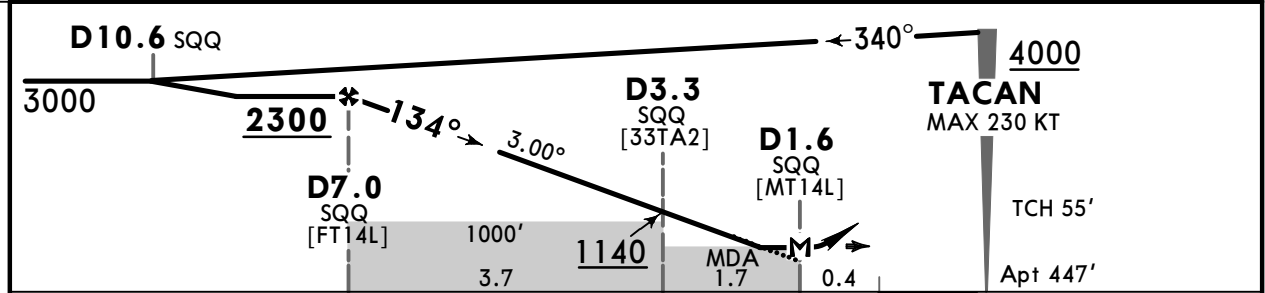
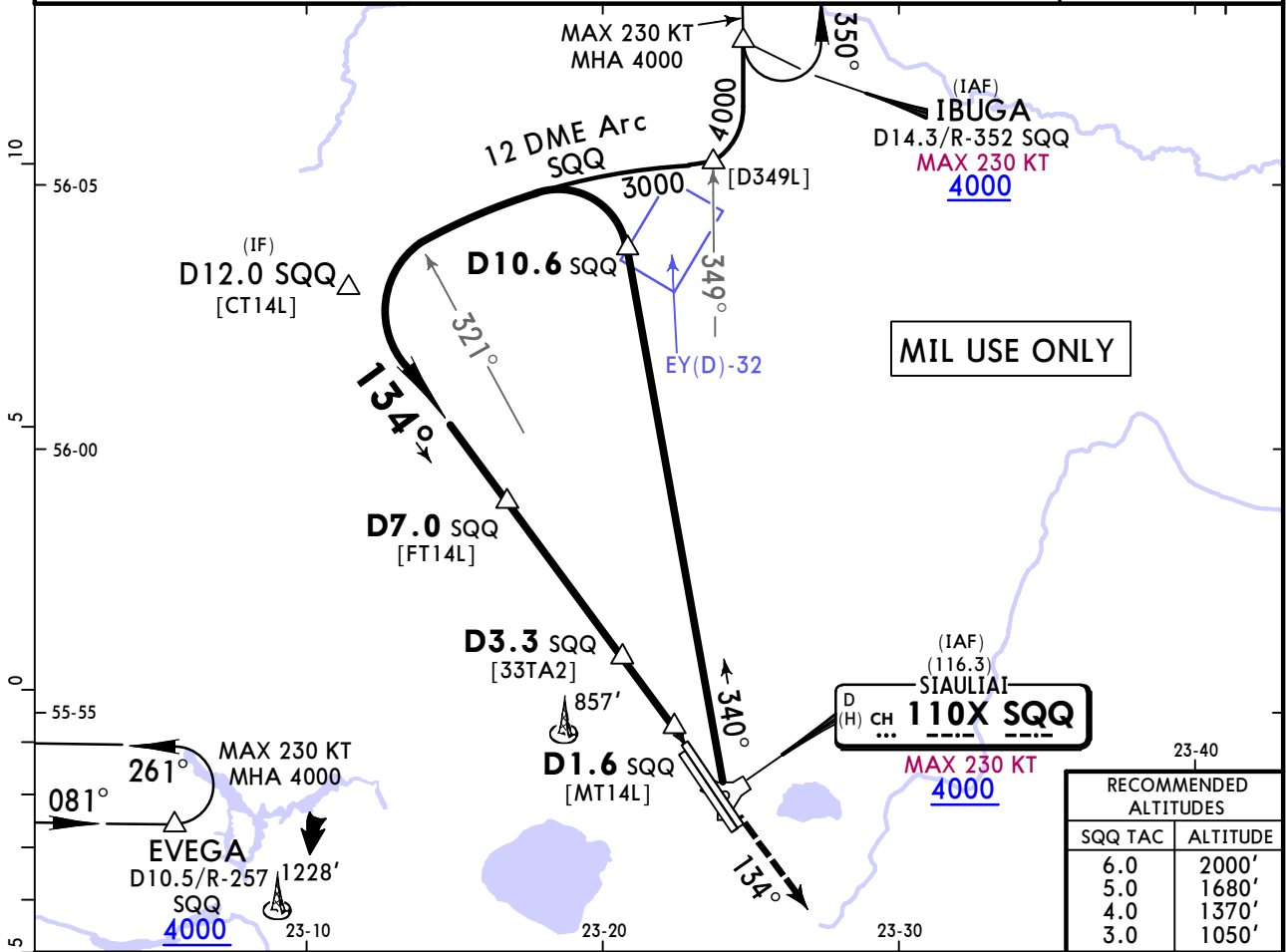
Military		STRAIGHT-IN LANDING		CIRCLE-TO-LAND	
		MDA(H) 1050' (616')			
		ALS out		Max Kts	MDA(H)
A	R2300m	R3000m		100	880' (433') V1500m
B				135	1160' (713') V2400m
C				180	1260' (813') V3600m
D	R2500m	R3200m		205	
E				240	1350' (903') V4300m

EYSA/SQQ SIAULIAI INTL

JEPPESEN
20 JAN 23 (14-1) Eff 26 Jan

SIAULIAI, LITHUANIA TACAN Rwy 14L

ATIS 120.755		SIAULIAI Approach 120.405		SIAULIAI Tower 120.405	
TACAN SQQ CH 110X (116.3)	Final Apch Crs 134°	D7.0 SQQ 2300 (1853')	MDA(H) (CONDITIONAL) 840' (393')	Apt Elev 447'	
MISSED APCH: Climb via SQQ TACAN on R-134 SQQ TACAN to 2000', then turn RIGHT (MAX 230 KT) to SQQ TACAN climbing to 4000'.					
Alt Set: hPa	Apt Elev: 16 hPa	Trans level: By ATC		Trans alt: 5000'	MSA SQQ TACAN



Gnd speed-Kts	70	90	100	120	140	160	HIALS PAPI	SQQ CH 110X (116.3)	2000'	SQQ CH 110X on R-134 (116.3)
Descent Angle	3.00°	372	478	531	637	849				
MAP at D1.6 SQQ										
D7.0 SQQ to MAP	5.3	4:33	3:32	3:11	2:39	2:16		1:59		

Timing not authorized for defining the MAP.

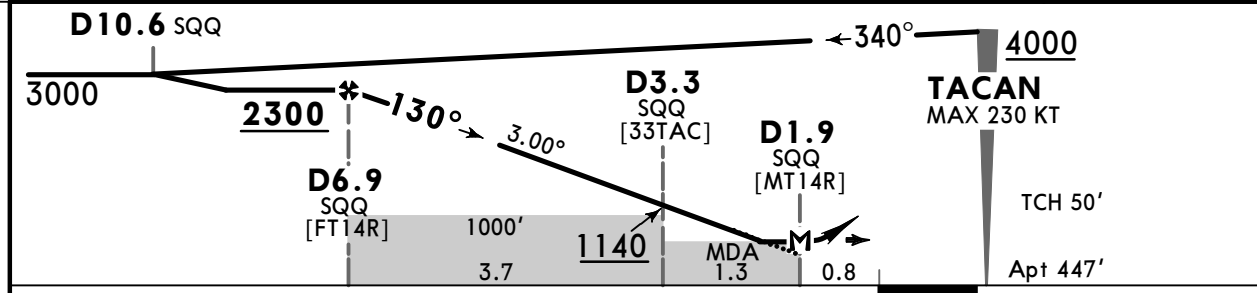
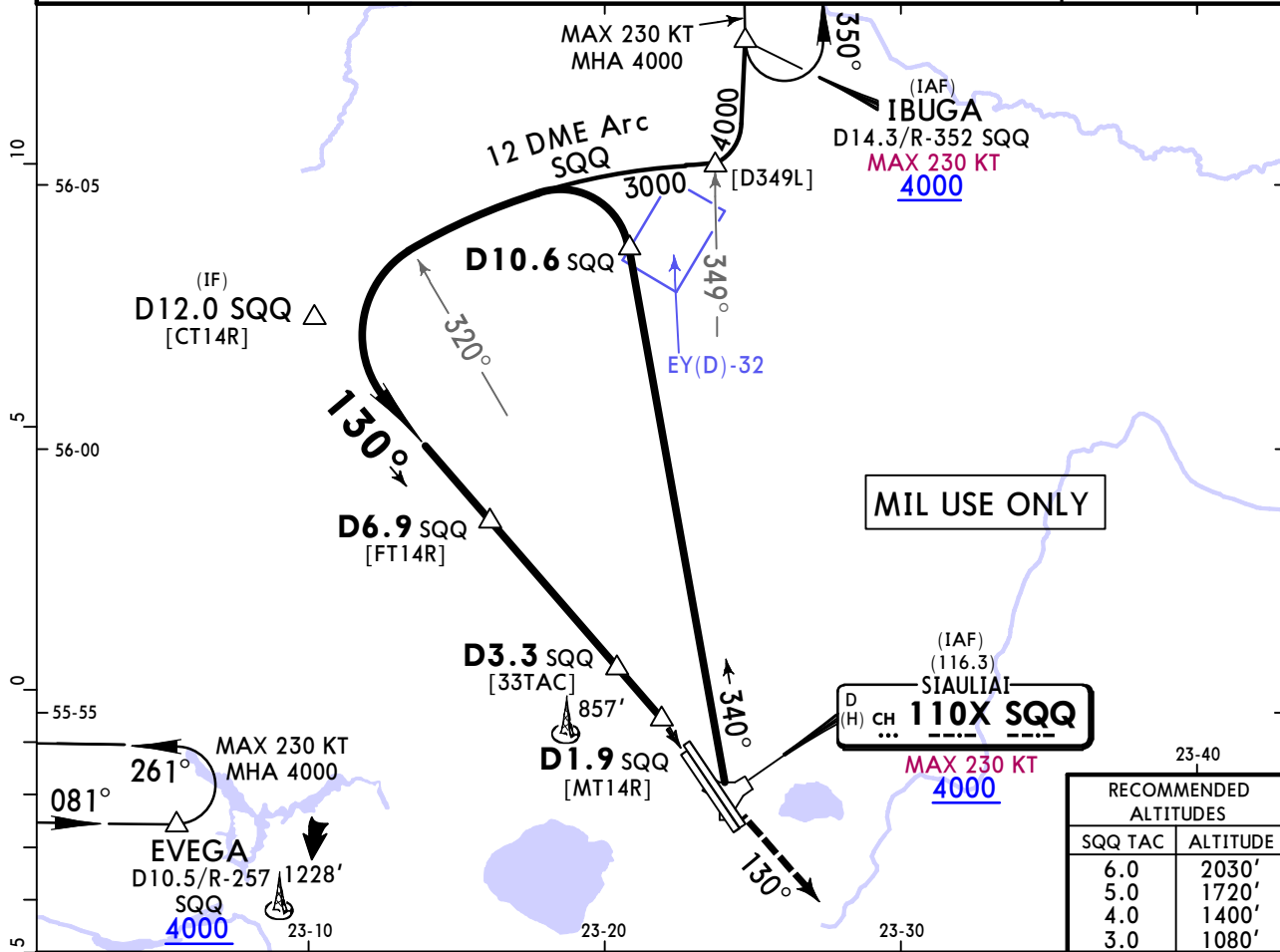
Military STRAIGHT-IN LANDING				CIRCLE-TO-LAND				
MDA(H) 840' (393')		w/o D3.3 SQQ MDA(H) 1000' (553')		Max Kts		MDA(H)		
ALS out		ALS out		100	880'	(433')	V1500m	
A	R1100m	R1500m	R2000m	R2700m	135	1160'	(713')	V2400m
B		R1800m	R2200m	R2900m	180	1260'	(813')	V3600m
C					205			
D					240	1350'	(903')	V4300m
E								

EYSA/SQQ SIAULIAI INTL

JEPPESEN
20 JAN 23 **(14-2)** Eff 26 Jan

SIAULIAI, LITHUANIA TACAN Rwy 14R

ATIS 120.755		SIAULIAI Approach 120.405		SIAULIAI Tower 120.405	
TACAN SQQ CH 110X (116.3)	Final Apch Crs 130°	D6.9 SQQ 2300 (1853')	MDA(H) (CONDITIONAL) 950' (503')	Apt Elev 447'	
MISSED APCH: Climb via SQQ TACAN on R-130 SQQ TACAN to 2000', then turn RIGHT (MAX 230 KT) to SQQ TACAN climbing to 4000'.					
Alt Set: hPa	Apt Elev: 16 hPa	Trans level: By ATC		Trans alt: 5000'	MSA SQQ TACAN



Gnd speed-Kts	70	90	100	120	140	160		SQQ CH 110X (116.3)	2000'	SQQ CH 110X on (116.3)
Descent Angle	3.00°	372	478	531	637	849		↑	↑	R-130
MAP at D1.9 SQQ										
D6.9 SQQ to MAP	5.0	4:17	3:20	3:00	2:30	2:09		1:53		

Timing not authorized for defining the MAP.

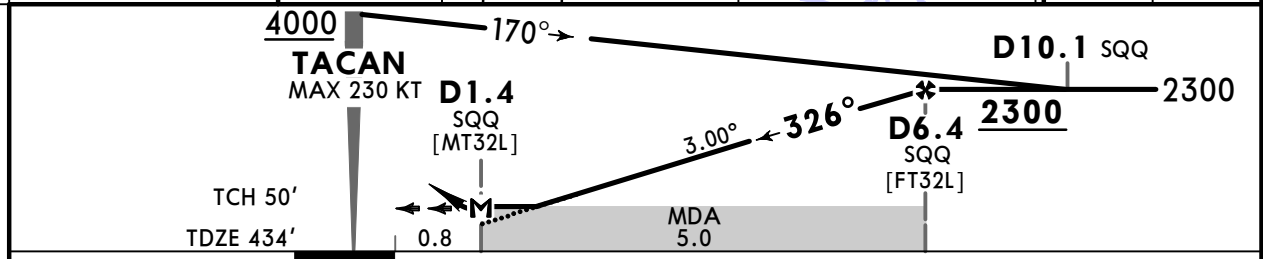
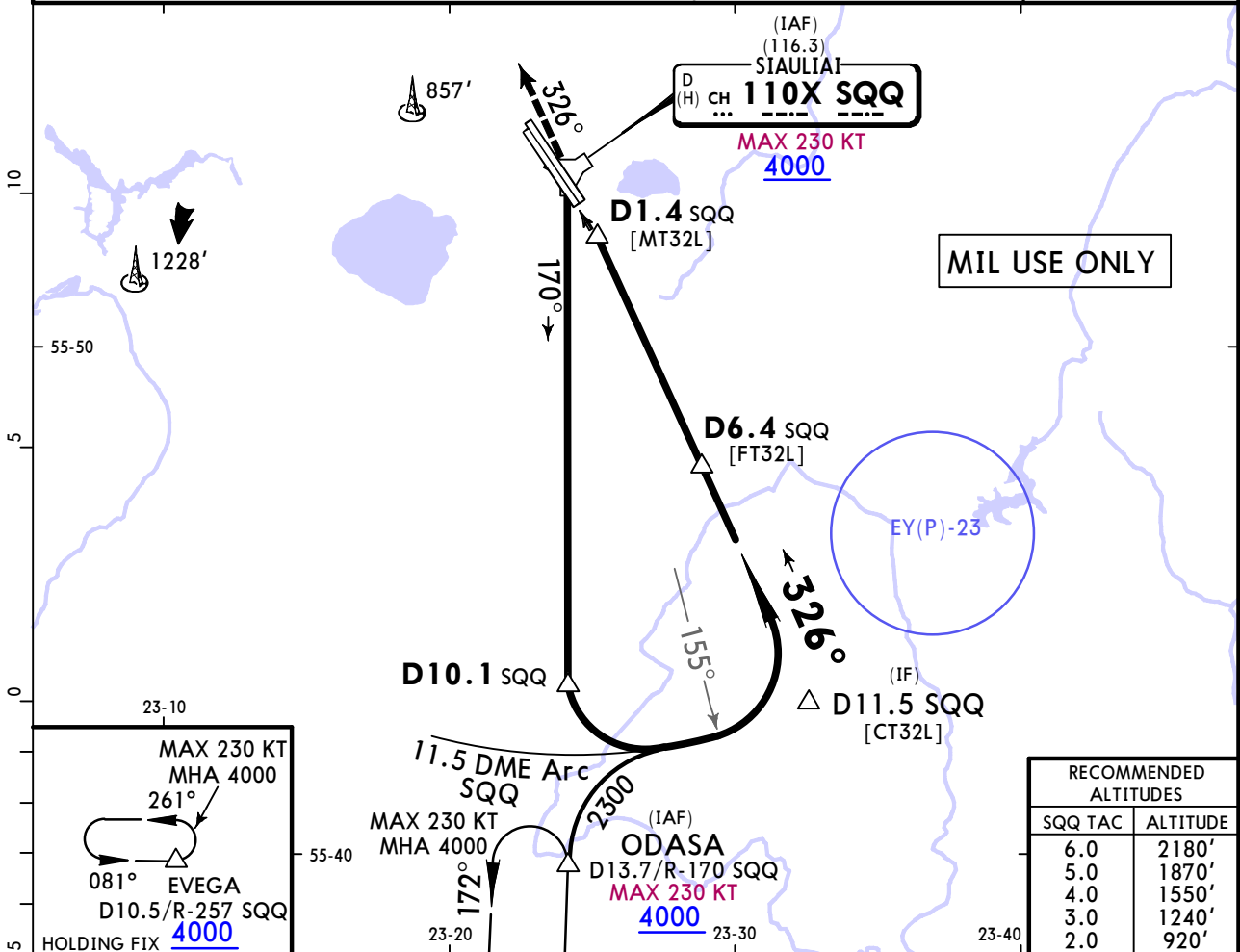
	MILITARY STRAIGHT-IN LANDING			CIRCLE-TO-LAND	
	MDA(H) 950' (503')	w/o D3.3 SQQ MDA(H) 1000' (553')		Max Kts	MDA(H)
A	ALS out	ALS out	ALS out	100	880' (433') V1500m
B	R1500m	R2000m	R2700m	135	1160' (713') V2400m
C				180	1260' (813') V3600m
D	R2000m	R2800m	R2200m	205	
E				240	1350' (903') V4300m

EYSA/SQQ
SIAULIAI INTL

JEPPESEN
20 JAN 23 **(14-3) Eff 26 Jan**

SIAULIAI, LITHUANIA
TACAN Rwy 32L

ATIS 120.755		SIAULIAI Approach 120.405		SIAULIAI Tower 120.405	
TACAN SQQ CH 110X (116.3)	Final Apch Crs 326°	D6.4 SQQ 2300 (1866')	MDA(H) 940' (506')	Apt Elev 447'	TDZE 434'
MISSED APCH: Climb via SQQ TACAN on R-326 SQQ TACAN to 2300', then turn RIGHT (MAX 230 KT, min bank angle 25°) to SQQ TACAN climbing to 4000'. Climb with 3.5% or more until passing 2300' due to airspace restriction.					
Alt Set: hPa		TDZE Elev: 16 hPa	Trans level: By ATC	Trans alt: 5000'	



Gnd speed-Kts	70	90	100	120	140	160	SQQ CH 110X (116.3) PAPI SQQ 2300' on (116.3) SQQ R-326
Descent Angle	3.00°	372	478	531	637	849	
MAP at D1.4 SQQ							
D6.4 SQQ to MAP	5.0	4:17	3:20	3:00	2:30	2:09	

Timing not authorized for defining the MAP.

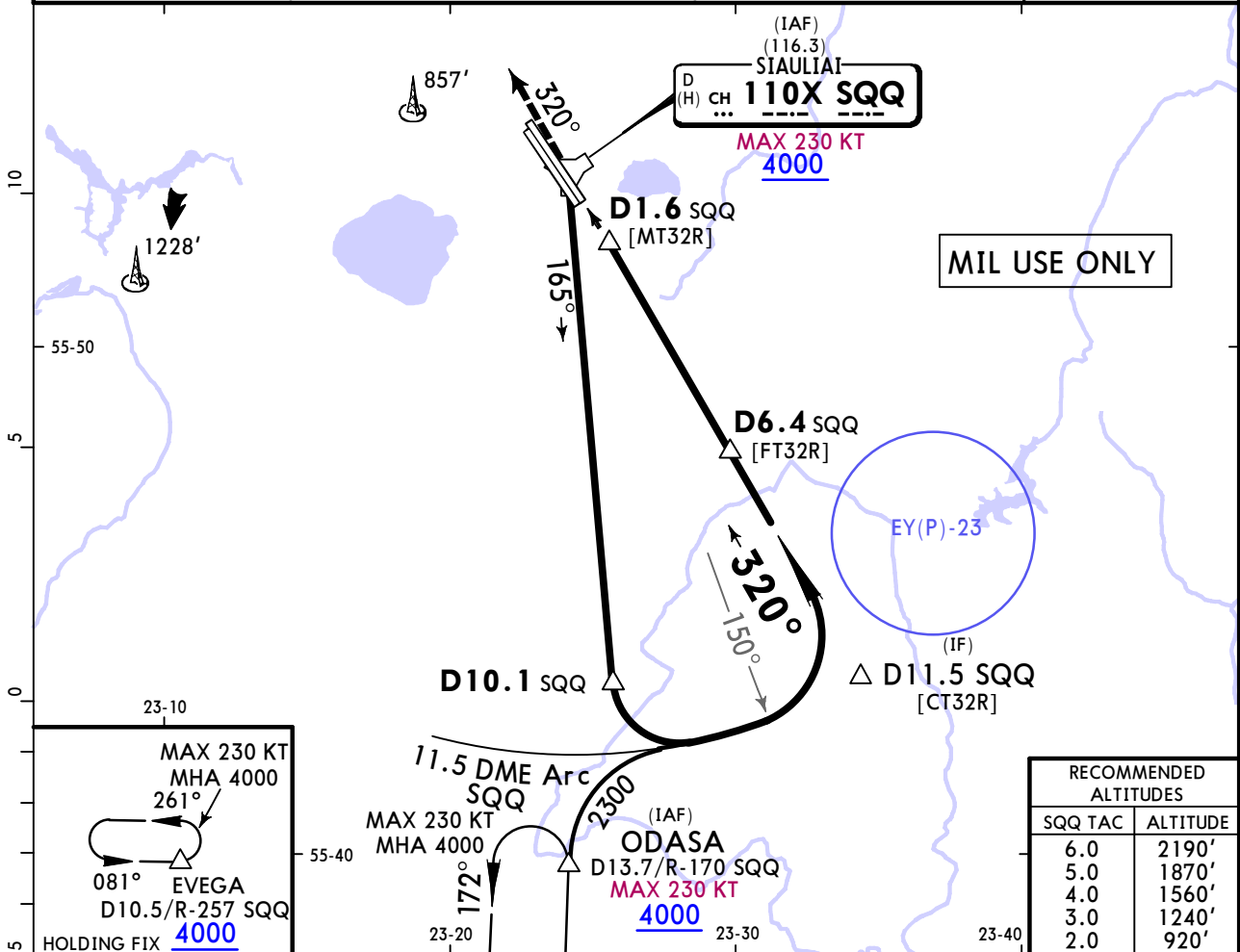
Military		STRAIGHT-IN LANDING		CIRCLE-TO-LAND	
		MDA(H) 940' (506')		ALS out	
PANS OPS MIL	A	R1500m		Max Kts	MDA(H)
	B			100	880' (433') V1500m
	C			135	1160' (713') V2400m
	D	R1900m	R2700m	180	1260' (813') V3600m
	E			205	1350' (903') V4300m

EYSA/SQQ
SIAULIAI INTL

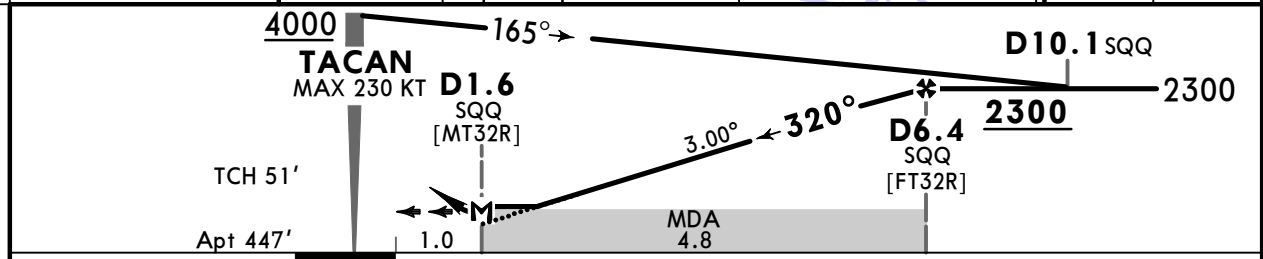
JEPPESEN
20 JAN 23 (14-4) Eff 26 Jan

SIAULIAI, LITHUANIA
TACAN Rwy 32R

ATIS 120.755		SIAULIAI Approach 120.405		SIAULIAI Tower 120.405	
TACAN SQQ CH 110X (116.3)	Final Apch Crs 320°	D6.4 SQQ 2300 (1853')	MDA(H) 800' (353')	Apt Elev	447'
MISSED APCH: Climb via SQQ TACAN on R-320 SQQ TACAN to 2300', then turn RIGHT (MAX 230 KT, min bank angle 25°) to SQQ TACAN climbing to 4000'. Climb with 3.5% or more until passing 2300' due to airspace restriction.					
Alt Set: hPa	Apt Elev: 16 hPa	Trans level: By ATC		Trans alt: 5000'	



RECOMMENDED ALTITUDES	
SQQ TAC	ALTITUDE
6.0	2190'
5.0	1870'
4.0	1560'
3.0	1240'
2.0	920'



Gnd speed-Kts	70	90	100	120	140	160	HIALS PAPI	SQQ CH 110X (116.3)	2300'	SQQ CH 110X on (116.3)
Descent Angle	3.00°	372	478	531	637	849		↑	↑	R-320
MAP at D1.6 SQQ										
D6.4 SQQ to MAP	4.8	4:07	3:12	2:53	2:24	2:03		1:48		

Timing not authorized for defining the MAP.

Military		STRAIGHT-IN LANDING		CIRCLE-TO-LAND	
		MDA(H) 800' (353')			
		ALS out		Max Kts	MDA(H)
A	R900m	R1500m		100	880' (433') V1500m
B		R1600m		135	1160' (713') V2400m
C				180	1260' (813') V3600m
D				205	
E				240	1350' (903') V4300m

CHANGES: MSA, missed approach text, altitudes.

Chart changes since cycle 15-2023

ADD = added chart, REV = revised chart, DEL = deleted chart.

ACT	PROCEDURE IDENT	INDEX	REV DATE	EFF DATE
SIAULIAI, (SIAULIAI INTL - EYSA)				

TERMINAL CHART CHANGE NOTICES

No Chart Change Notices for Airport EYSA