

List of pages in this Trip Kit

Trip Kit Index

Airport Information For MMMY

Terminal Charts For MMMY

Revision Letter For Cycle 22-2020

Change Notices

Notebook

General Information

Location: MONTERREY MEX
ICAO/IATA: MMY / MTY
Lat/Long: N25° 46.7', W100° 06.4'
Elevation: 1276 ft

Airport Use: Public
Daylight Savings: Observed
UTC Conversion: +6:00 = UTC
Magnetic Variation: 5.0° E
Sectional Chart: Brownsville

Fuel Types: 100-130 Octane, Jet A
Customs: Yes
Airport Type: IFR
Landing Fee: No
Control Tower: Yes
Jet Start Unit: No
LLWS Alert: No
Beacon: Yes

Sunrise: 1303 Z
Sunset: 2350 Z

Runway Information

Runway: 11
Length x Width: 9843 ft x 148 ft
Surface Type: concrete
TDZ-Elev: 1276 ft
Lighting: Edge, ALS

Runway: 16
Length x Width: 5906 ft x 98 ft
Surface Type: asphalt
TDZ-Elev: 1273 ft

Runway: 29
Length x Width: 9843 ft x 148 ft
Surface Type: concrete
TDZ-Elev: 1234 ft
Lighting: Edge, ALS

Runway: 34
Length x Width: 5906 ft x 98 ft
Surface Type: asphalt
TDZ-Elev: 1257 ft

Communication Information

ATIS: 127.700

Monterrey Tower: 118.100

Monterrey Ground: 121.900

Monterrey Approach: 120.400

Monterrey Approach: 119.750

Monterrey Arrival: 120.400

Monterrey Departure: 119.750

Monterrey Information: 122.450 AFIS

TMA
10-1B

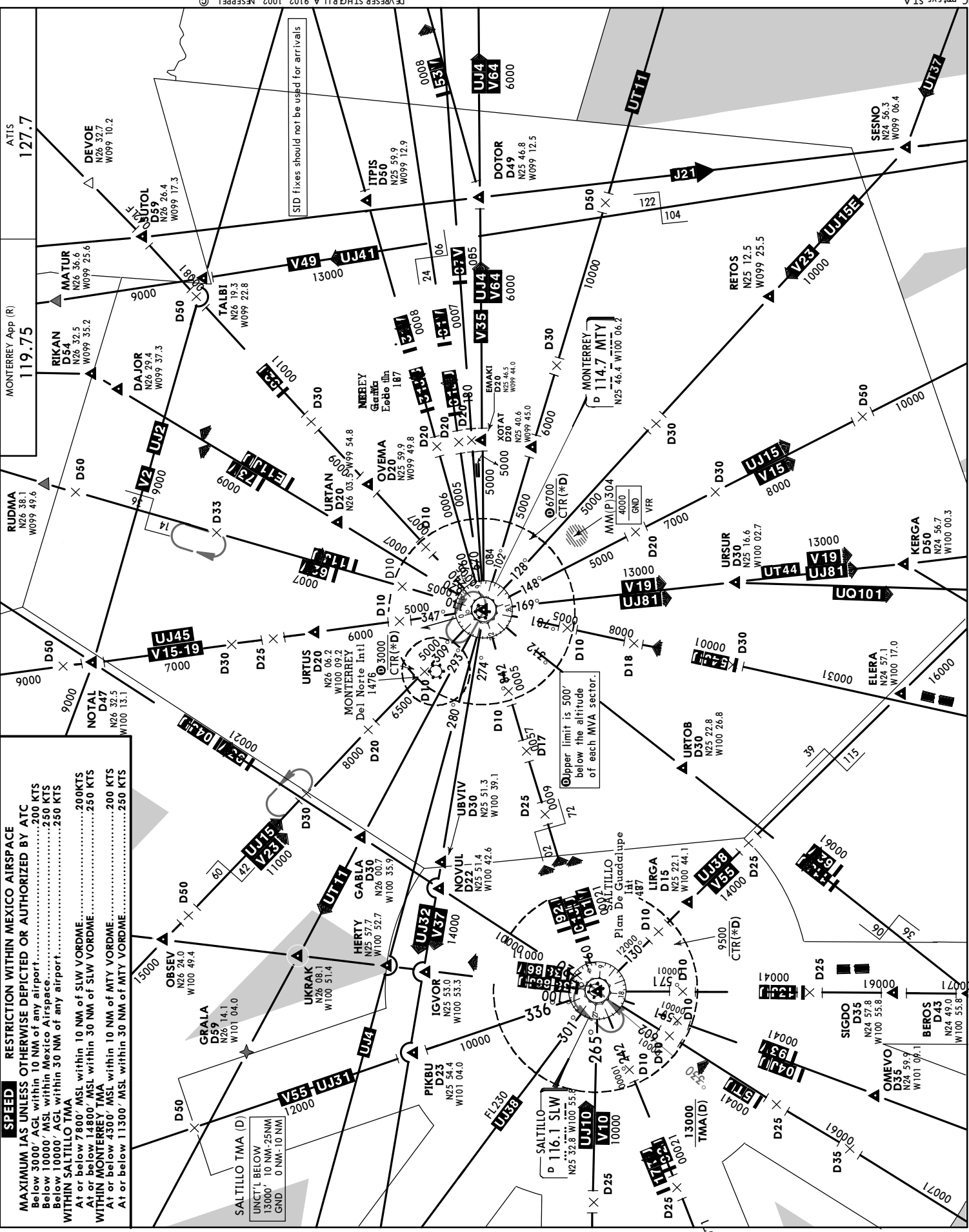
MONTERREY, MEXICO

22 FEB 19
Eff 28 Feb

SPEED RESTRICTION WITHIN MEXICO AIRSPACE
 MAXIMUM IAS UNLESS OTHERWISE DEPICTED OR AUTHORIZED BY ATC
 Below 3000' AGL within 10 NM of any airport..... 200 KTS
 Below 10000' MSL within Mexico Airspace..... 250 KTS
 Below 10000' AGL within 30 NM of any airport..... 250 KTS
WITHIN SALTILLO TMA
 At or below 7800' MSL within 10 NM of SLW VORDME..... 200KTS
 At or below 14800' MSL within 30 NM of SLW VORDME..... 250 KTS
WITHIN MONTERREY TMA
 At or below 4300' MSL within 10 NM of MTY VORDME..... 200 KTS
 At or below 11300' MSL within 30 NM of MTY VORDME..... 250 KTS

SALTILLO TMA (D)
 UNCT'L BELOW
 13000' 10 NM-25NM
 10000' 0 NM-10 NM
 GND 0 NM-10 NM

SID fixes should not be used for arrivals



MMMY/MTY GEN MARIANO ESCOBEDO INTL

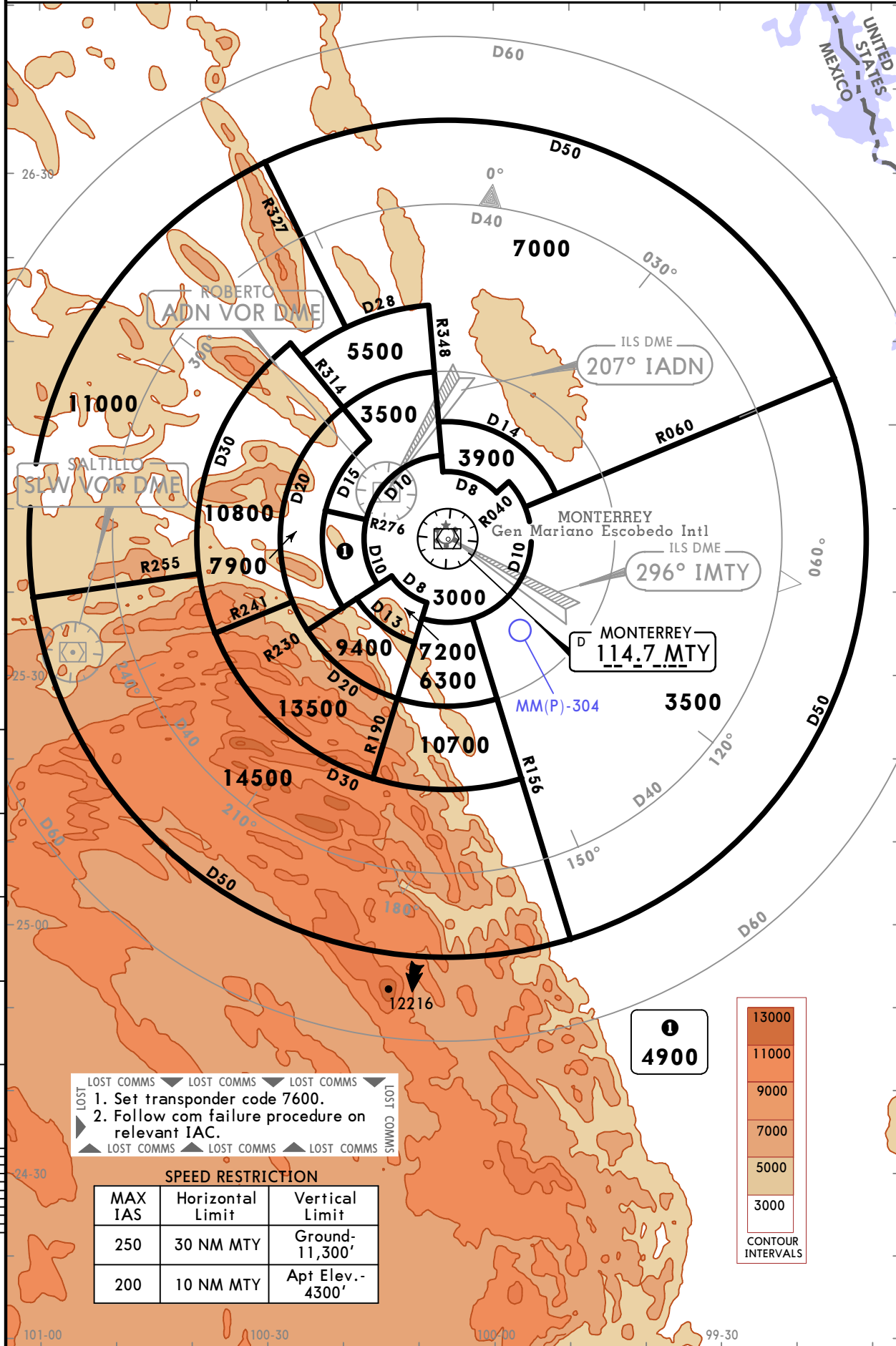


14 JUN 19
Eff 20 Jun

MONTERREY, MEXICO

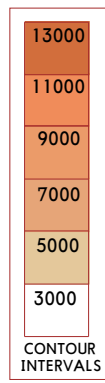
RADAR MINIMUM ALTITUDES

MONTERREY Approach (R) 119.75	Apt Elev 1276	Alt Set: IN (MB on req) Trans level: FL195 Trans alt: 18500
		<p>1. These MVAs are the lowest altitudes that can be assigned by the controller in a sector when RADAR control procedures (vectors) are applied, without affecting routes and procedures with lower minimums.</p> <p>2. All aircraft operating under VFR within this TMA should have transponder mode 3 A/C with 4096 code capabilities.</p> <p>3. Exclusive use chart to verify assigned altitudes to identified aircraft.</p>



SPEED RESTRICTION

MAX IAS	Horizontal Limit	Vertical Limit
250	30 NM MTY	Ground-11,300'
200	10 NM MTY	Apt Elev.-4300'



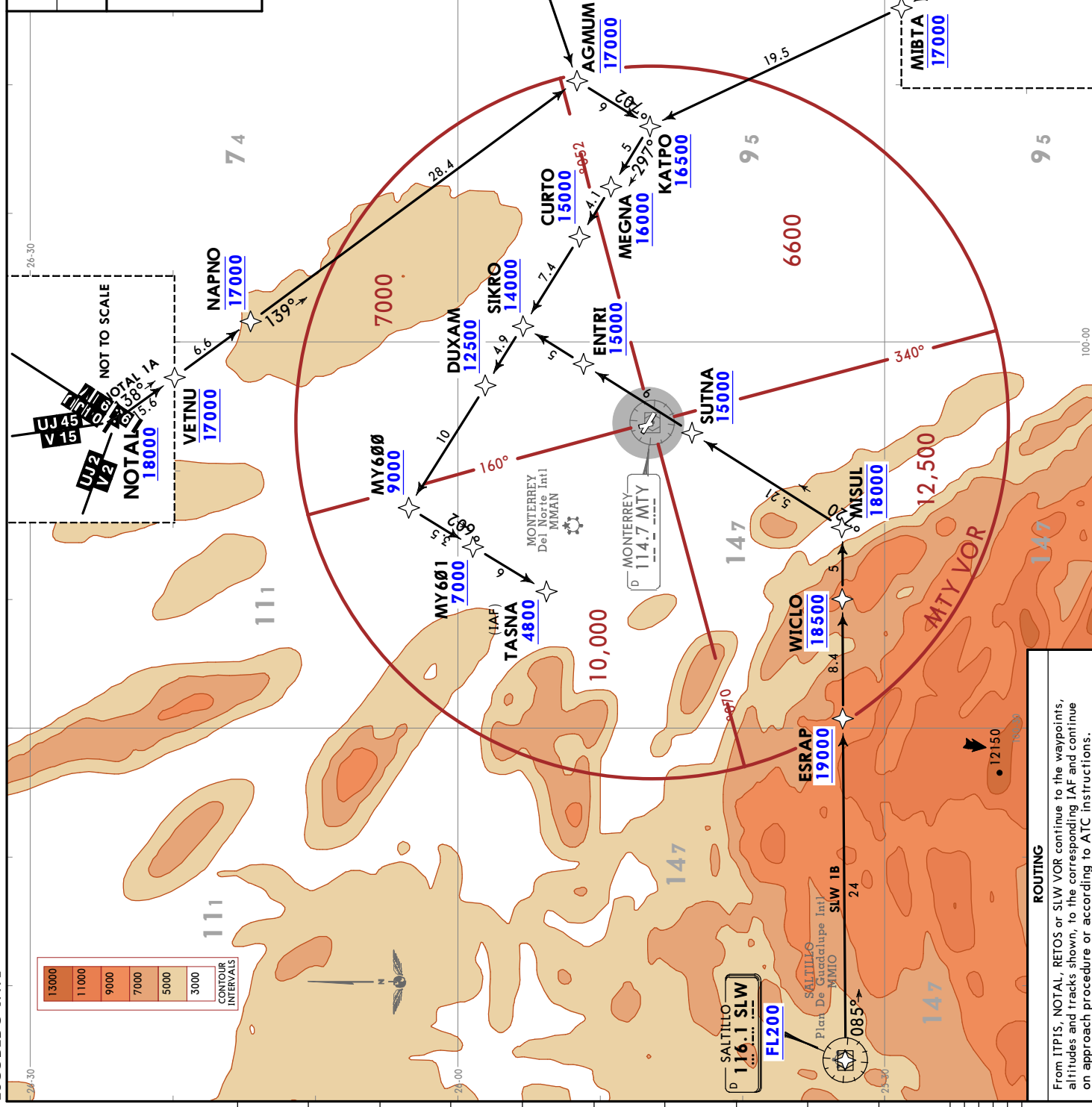
MONTERREY MEXICO
RNAV STAR

MMMY/MTY
GEN MARIANO ESCOBEDO INTL

14 JUN 19 10-2 Eff 20 Jun

ATIS 127.7
 Alt Set: IN (MB on req)
 Trans level: FL195
 1. GNSS required.
 2. RADAR required.
 3. RNAV 1.

ITPIS 1A [ITPIS1A] [ITPI1A]
 NOTAL 1A [NOTAL1A] [NOTATA]
 RETOS 1A [RETOS1A] [RETO1A]
 SLW 1B [SLW1B] [SLW1B]
 RNAV ARRIVALS (RWY 11)



ROUTING

From ITPIS, NOTAL, RETOS or SLW VOR continue to the waypoints, altitudes and tracks shown, to the corresponding IAF and continue on approach procedure or according to ATC instructions.

CHANGES: Altimeter setting, crossing altitudes at waypoints AGMUM and NAPNO.

MONTERREY Departure
 119.75
 Apt Elev
 1276

Trans alt: 18500

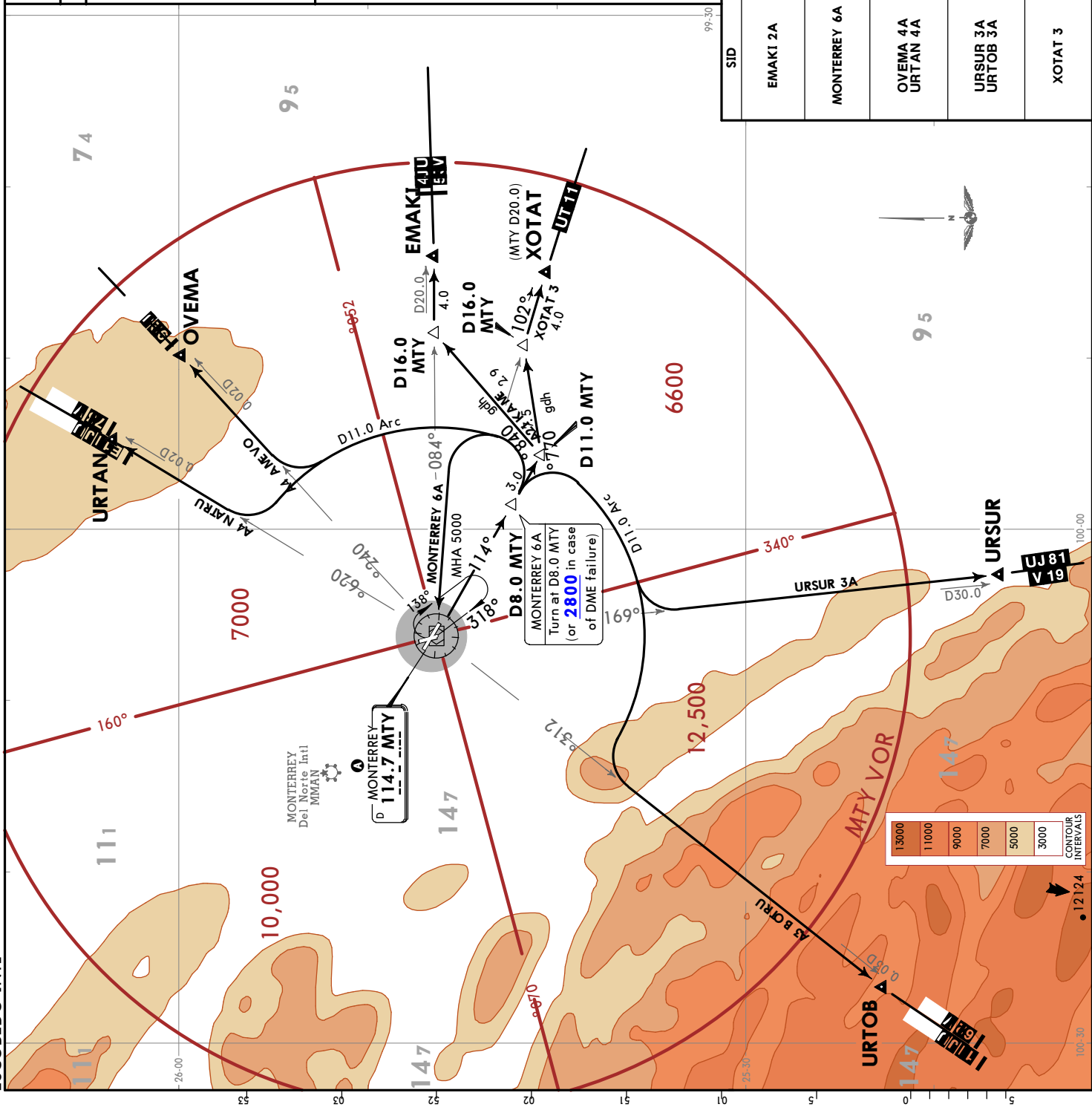
EMAKI 2A (EMAKI2A) [EMAK2A]
MONTERREY 6A (MTY6A) [MTY6A]
OVEMA 4A (OVEMA4A) [OVEMA4A]
URSUR 3A (URSUR3A) [URSUS3A]
URTAN 4A (URTAN4A) [URTA4A]
URTOB 3A (URTOB3A) [URTO3A]
XOTAT 3 (XOTAT3) [XOTAT3]
DEPARTURES (RWY 11)

	MINIMUM CROSSING ALTITUDE	
NLD	V-37	2500
DEVOE	UJ-11E	2000
REX	J-29	2100
BRO		2000
REX		2100
MAM	UJ-4	2000
CUN	UT-11	2000
CVM	UJ-15	2000
ITBEN	UJ-19	5000
CDR	UJ-26	9100
RABAX	V-37	4300
ADN	DRT	3200
OMISI	UT-11	4300
PNG	UJ-15	2000
TOTAL	V-19	3200

These SIDs require a minimum climb gradient:
 OVEMA 4A, URTAN 4A: 220 per NM to 7000.

Grnd speed-KT	75	100	150	200	250	300
220 per NM	275	367	550	733	917	1100

SID	INITIAL CLIMB
EMAKI 2A	Climb on MTY R114 to D11.0 MTY, turn LEFT heading 048° to intercept MTY R084 to EMAKI and then continue on the assigned route or in accordance with ATC instructions.
MONTERREY 6A	Climb on MTY R114 to D8.0 MTY (or 2800 in case of DME failure), turn LEFT within 11 NM to MTY VOR and depart the station at the MCA for the assigned route or in accordance with ATC instructions.
OVEMA 4A URTAN 4A	Climb on MTY R114 to D8.0 MTY, turn LEFT and proceed on the D11.0 Arc until intercepting the corresponding radial from MTY VOR to OVEMA or URTAN. Continue on assigned route or in accordance with ATC instructions.
URSUR 3A URTOB 3A	Climb on MTY R114 to D8.0 MTY, turn RIGHT and proceed on the D11.0 Arc until intercepting the corresponding radial from MTY VOR to URSUR or URTOB. Continue on assigned route or in accordance with ATC instructions.
XOTAT 3	Climb on MTY R114 to D11.0 MTY, turn LEFT heading 077° to intercept MTY R102 to XOTAT and then continue on the assigned route or in accordance with ATC instructions.



MONTERREY, MEXICO

MMY/MTY
GEN MARIANO ESCOBEDO INTL

27 DEC 19 10-3C

JEPPESEN

MONTERREY Departure
119.75

Trans alt: 18500

Apt Elev
1276

SID

GABLA 3 [GABLA3] [GABLA3]
MONTERREY 5B [MTY5B] [MTY5B]
OVEMA 4B [OVEMA4B] [OVEMA4B]
UBVIV 1 [UBVIV1] [UBVIV1]
URTAN 3B [URTAN3B] [URTA3B]
URTOB 3B [URTOB3B] [URTO3B]
URTUS 3A [URTUS3A] [URTU3A]

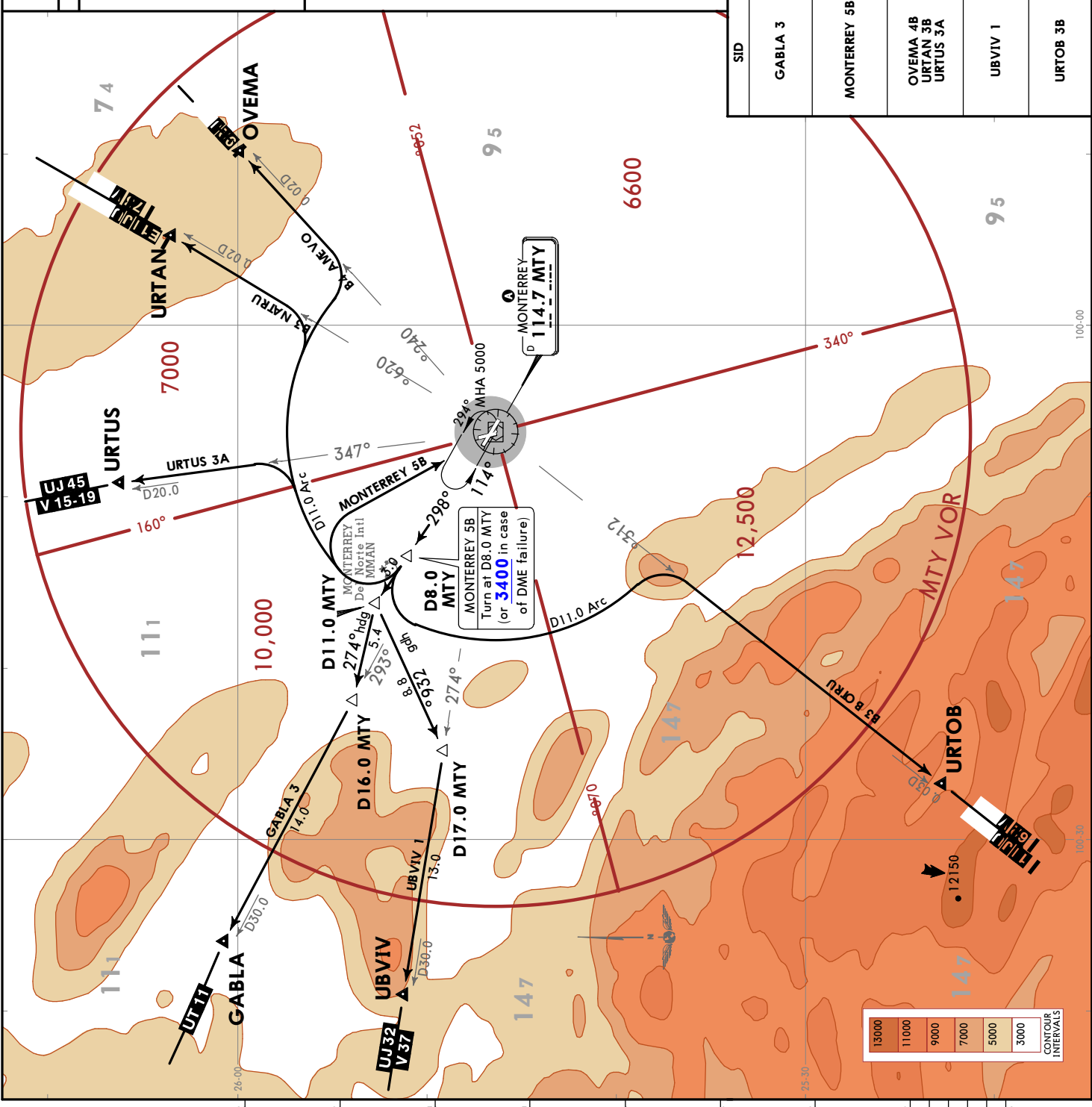
DEPARTURES (RWY 29)

	MINIMUM CROSSING ALTITUDE
NLD	2500
DEV0E	2000
REX	2100
BRO	2000
REX	2100
MAM	2000
CUN	2000
CVM	2000
ITBEN	5000
V-15	2000
V-19	5000
V-26	9100
RABAX	4500
V-37	3200
ADN	4300
OMISI	3200
PNG	2000
V-15	2000
V-19	3200
NOTAL	3200

These SIDs require minimum climb gradients:
MONTERREY 5B: 300 per NM to 4000.
UBVIV 1: 360 per NM to 12000.
OVEMA 4B, URTAN 3B, URTUS 3A: 300 per NM to 7000.
URTOB 3B: 320 per NM to 12000.

	INITIAL CLIMB
Gnd speed-KT	75 100 150 200 250 300
300 per NM	375 500 750 1000 1250 1500
320 per NM	400 533 800 1067 1333 1600
360 per NM	450 600 900 1200 1500 1800

SID	INITIAL CLIMB
GABLA 3	Climb on MTY R298 to D11.0 MTY, turn LEFT heading 274° until intercepting MTY R293 to GABLA. Continue on assigned route or in accordance with ATC instructions.
MONTERREY 5B	Climb on MTY R298 to D8.0 MTY (or 3400 in case of DME failure), turn RIGHT within 11 NM to MTY VOR and depart the station at the MCA for the assigned route or in accordance with ATC instructions.
OVEMA 4B URTAN 3B URTUS 3A	Climb on MTY R298 to D8.0 MTY, turn RIGHT and proceed on the D11.0 Arc until intercepting the corresponding radial from MTY VOR to OVEMA, URTAN, or URTUS. Continue on assigned route or in accordance with ATC instructions.
UBVIV 1	Climb on MTY R298 to D11.0 MTY, turn LEFT heading 239° until intercepting MTY R274 to UBVIV. Continue on assigned route or in accordance with ATC instructions.
URTOB 3B	Climb on MTY R298 to D8.0 MTY, turn LEFT and proceed on the D11.0 Arc to intercept MTY R213 to URTOB. Continue on assigned route or in accordance with ATC instructions.



MMMY/MTY

Apt Elev **1276'**
N25 46.7 W100 06.4

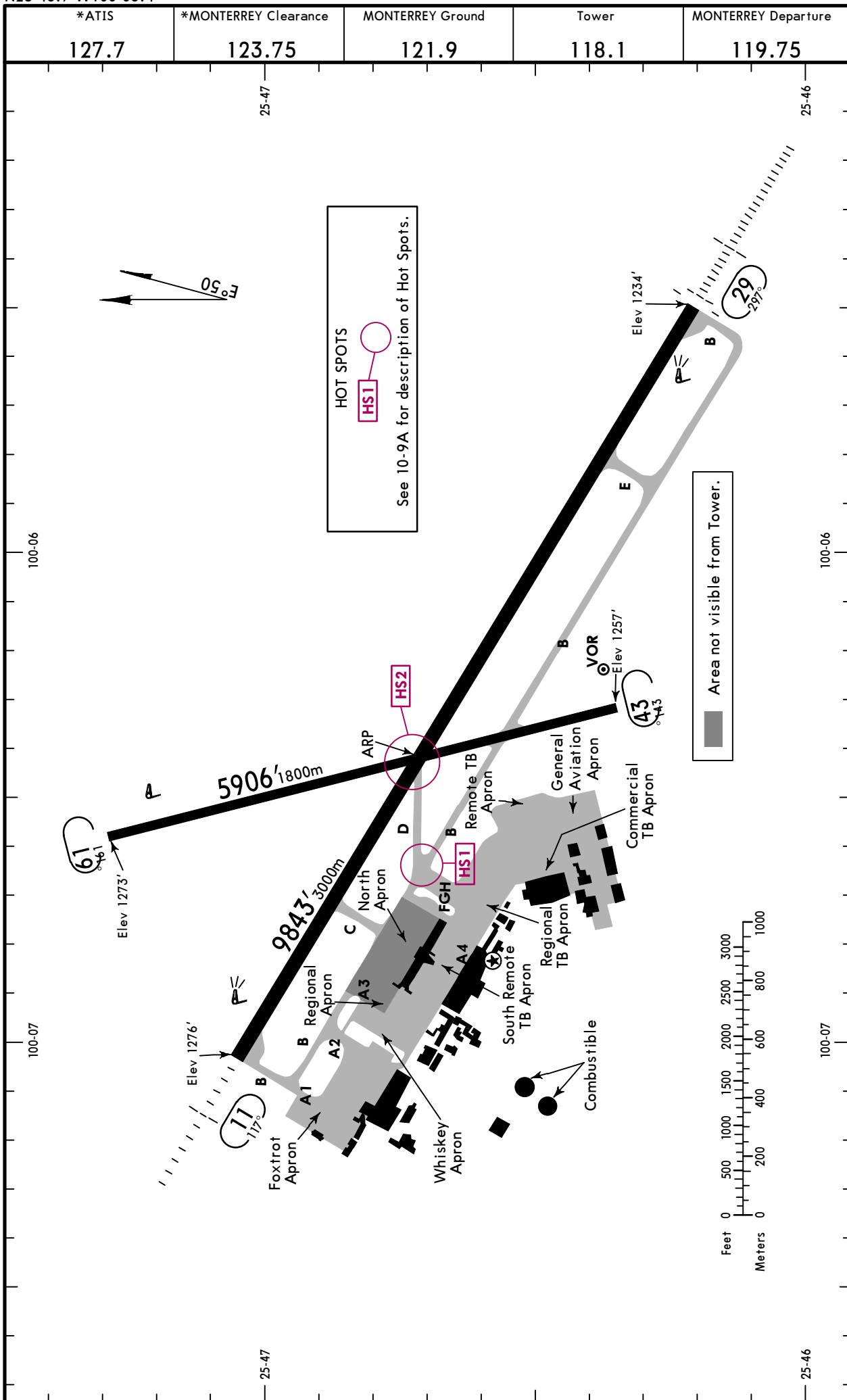


15 NOV 19

10-9

MONTERREY, MEXICO

GEN MARIANO ESCOBEDO INTL



MMMY/MTY

15 NOV 19 **JEPPESEN** 10-9A

MONTERREY, MEXICO
GEN MARIANO ESCOBEDO INTL

GENERAL
Birds in vicinity of airport.

RWY		USABLE LENGTHS		TAKE-OFF	WIDTH
		LANDING	BEYOND		
		Threshold	Glide Slope		
11	HIRL SALS REIL PAPI-L (angle 3.0°)				148'
29	HIRL ALSF-I REIL PAPI-L (angle 3.0°)		8772' 2674m		45m

16	1 34				98' 30m
----	-------------	--	--	--	------------

1 Closed to aircraft weighing more than 88,185 lbs (40,000 kg).

HOT SPOTS HS

For information only, not to be construed as ATC instructions.

HS1 Aircraft on Twy F or G heading towards Rwy 11: turn left and continue on Twy B.
Aircraft heading towards Rwy 29 turn right and continue on Twy B.

HS2 Aircrafts on Twy D shall stay at the holding point until the ATC clearance to enter Rwy 11/29 is provided.

TAKE-OFF		
	Rwys 11, 29	Rwys 16, 34
1 & 2 Eng	1 200-1	DAY VFR
3 & 4 Eng	200-1/2	

1 Turbojet aircraft with 2 engines apply 200-1/2; to use this minimum the full ILS must be operating.

FOR FILING AS ALTERNATE

ILS DME-1 Rwy 29 ILS DME-2 Rwy 29 ILS DME-3 Rwy 29 ILS DME-4 Rwy 29	VOR Rwy 16 VOR Rwy 34	Other
--	--------------------------	-------

A		
B	600-2	800-2
C		
D	NA	800-2

MMMY/MTY

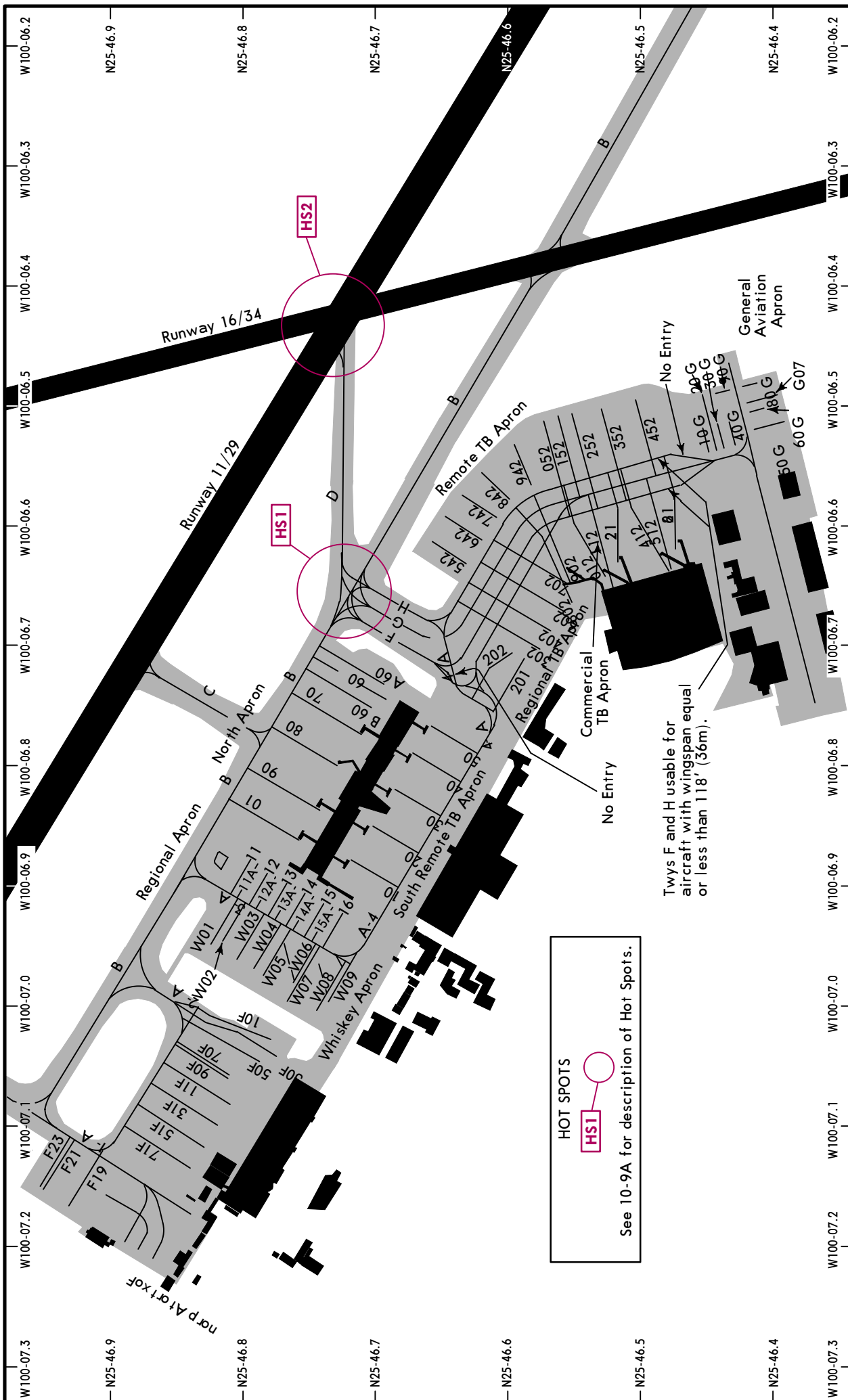
JEPPESSEN

MONTERREY, MEXICO

6 MAR 20

10-9B

GEN MARIANO ESCOBEDO INTL



HOT SPOTS

HS1 ○

See 10-9A for description of Hot Spots.

Twys F and H usable for aircraft with wingspan equal or less than 118' (36m).

MMMY/MTY



MONTERREY, MEXICO

GEN MARIANO ESCOBEDO INTL

PARKING STAND COORDINATES	
STAND No.	COORDINATES
Commercial TB Apron	
206, 207 208 209 210 thru 216	N25 46.6 W100 06.7 N25 46.5 W100 06.7 N25 46.6 W100 06.6 N25 46.5 W100 06.6
Foxtrot Apron	
F01, F03, F05 F7, F9, F11, F13, F15, F17 F19, F21 F23	N25 46.8 W100 07.0 N25 46.8 W100 07.1 N25 46.9 W100 07.2 N25 46.9 W100 07.1
General Aviation Apron	
G01 thru G09	N25 46.4 W100 06.5
North Apron	
1 2, 9 10	N25 46.7 W100 06.9 N25 46.7 W100 06.8 N25 46.8 W100 06.9
Regional Apron	
11 thru 13A 14 thru 16	N25 46.8 W100 06.9 N25 46.7 W100 06.9
Regional TB Apron	
201 thru 204	N25 46.6 W100 06.7
Remote TB Apron	
245 thru 248 249 thru 251 252 thru 254	N25 46.6 W100 06.6 N25 46.6 W100 06.5 N25 46.5 W100 06.5
South Remote TB Apron	
3, 4, 5 ,6B, 7, 8 6, 6A	N25 46.7 W100 06.8 N25 46.7 W100 06.7
Whiskey Apron	
W01 W02 thru W07 W08, W09	N25 46.8 W100 06.9 N25 46.8 W100 07.0 N25 46.7 W100 07.0

MMMY/MTY
GEN MARIANO
ESCOBEDO INTL

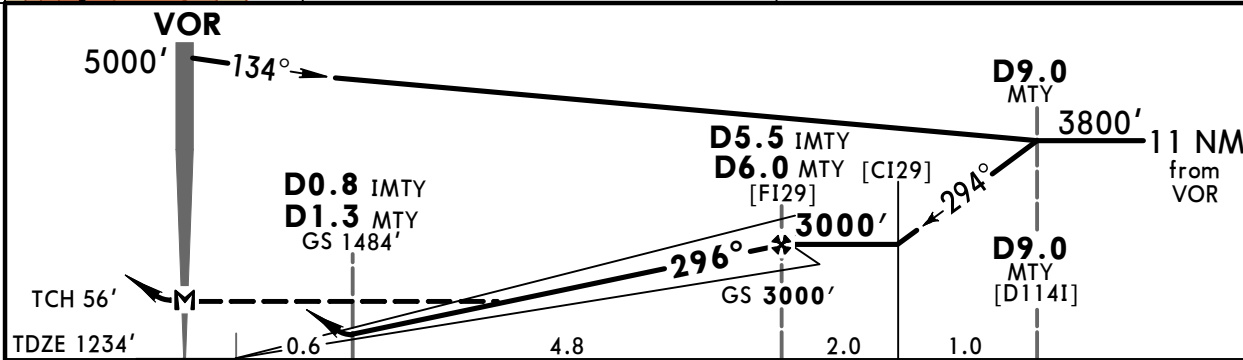
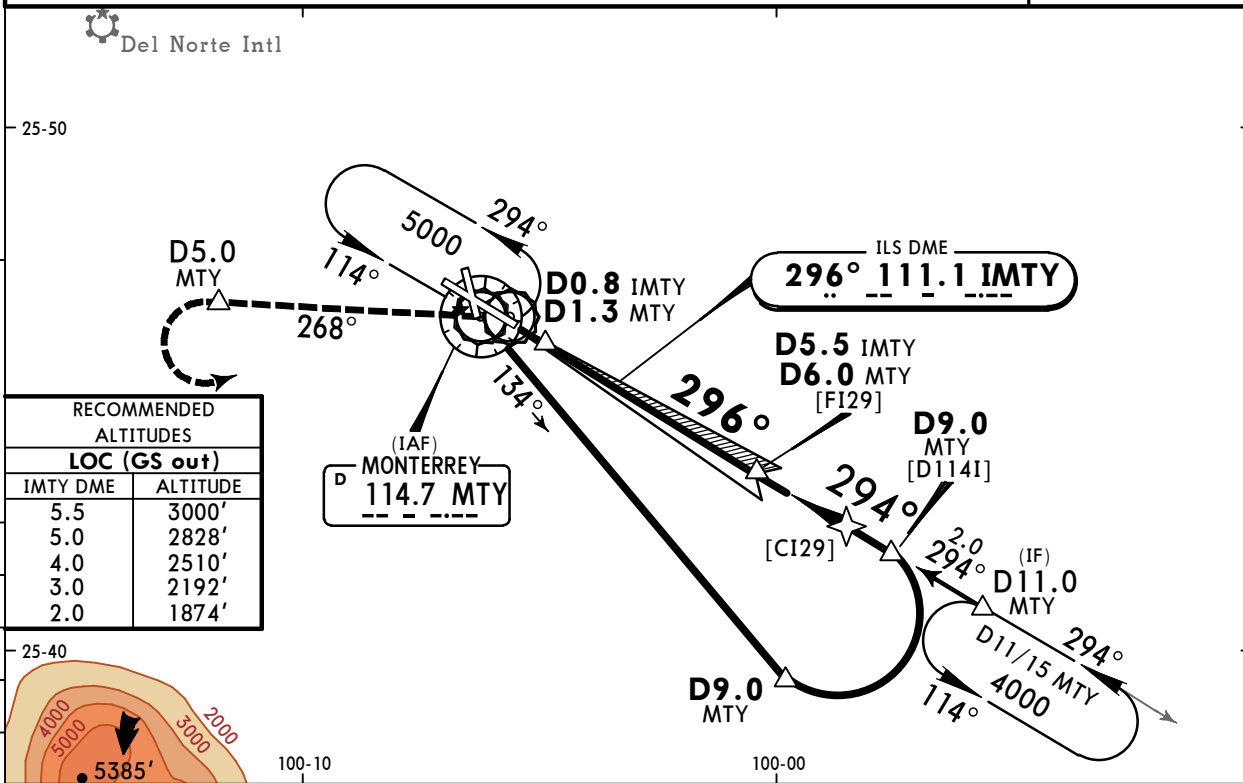
JEPPesen MONTERREY, MEXICO

1 NOV 19
Eff 7 Nov

(11-1)

ILS DME 1 or LOC Rwy 29

*ATIS 127.7	MONTERREY Approach (R) 119.75	MONTERREY Arrival 120.4	MONTERREY Tower 118.1	Ground 121.9
LOC IMTY 111.1	Final Apch Crs 296°	GS D5.5 IMTY D6.0 MTY 3000' (1766')	ILS DA(H) 1484' (250')	Apt Elev 1276' TDZE 1234'
MISSED APCH: Climb outbound on MTY VOR R-268 to D5.0 MTY then turn LEFT within 8 NM to MTY VOR to the minimum holding altitude.				
Alt Set: MB (IN on req) TDZ Elev: 44 MB Trans level: FL 195 Trans alt: 18500' 1. ILS DME only usable by aircraft equipped with instruments that can read with a precision of 0.20 NM increments. 2. Do not simultaneously use holding patterns at the same altitude.				MSA MTY VOR



Gnd speed-Kts	70	90	100	120	140	160	ALSF-1 REIL PAPI	on MTY R-268 D5.0 MTY	
GS	3.00°	372	478	531	637	743			849
MAP at VOR									
FAF to Threshold	5.4	4:38	3:36	3:14	2:42	2:19			2:02

STRAIGHT-IN LANDING RWY29				CIRCLE-TO-LAND	
ILS		LOC (GS out)		MDA(H)	
DA(H) 1484' (250')		MDA(H) 1600' (366')		_____	
FULL		ALS out		Max Kts	_____
A				90	1820' (544') - 1
B				120	
C	1/2	3/4	1/2	140	1820' (544') - 1 1/2
D				165	1860' (584') - 2

MMMY/MTY
GEN MARIANO
ESCOBEDO INTL

JEPPESEN

MONTERREY, MEXICO

1 NOV 19
 Eff 7 Nov (11-2)

TRANSITIONS FOR ILS DME 2 or LOC Rwy 29

*ATIS 127.7	MONTERREY Approach (R) 119.75	MONTERREY Arrival 120.4	MONTERREY Tower 118.1	Ground 121.9
----------------	----------------------------------	----------------------------	--------------------------	-----------------

FOR FINAL APPROACH SEE 11-2A

Alt Set: MB (IN on req) TDZ Elev: 44 MB Trans level: FL 195 Trans alt: 18500'
 1. ILS DME only usable by aircraft equipped with instruments that can read with a precision of 0.20 NM increments. 2. Do not simultaneously use holding patterns at the same altitude. 3. In case of DME failure at any point of the procedure, maintain last assigned altitude and proceed to the station according to ATC instructions.

10,000

7000

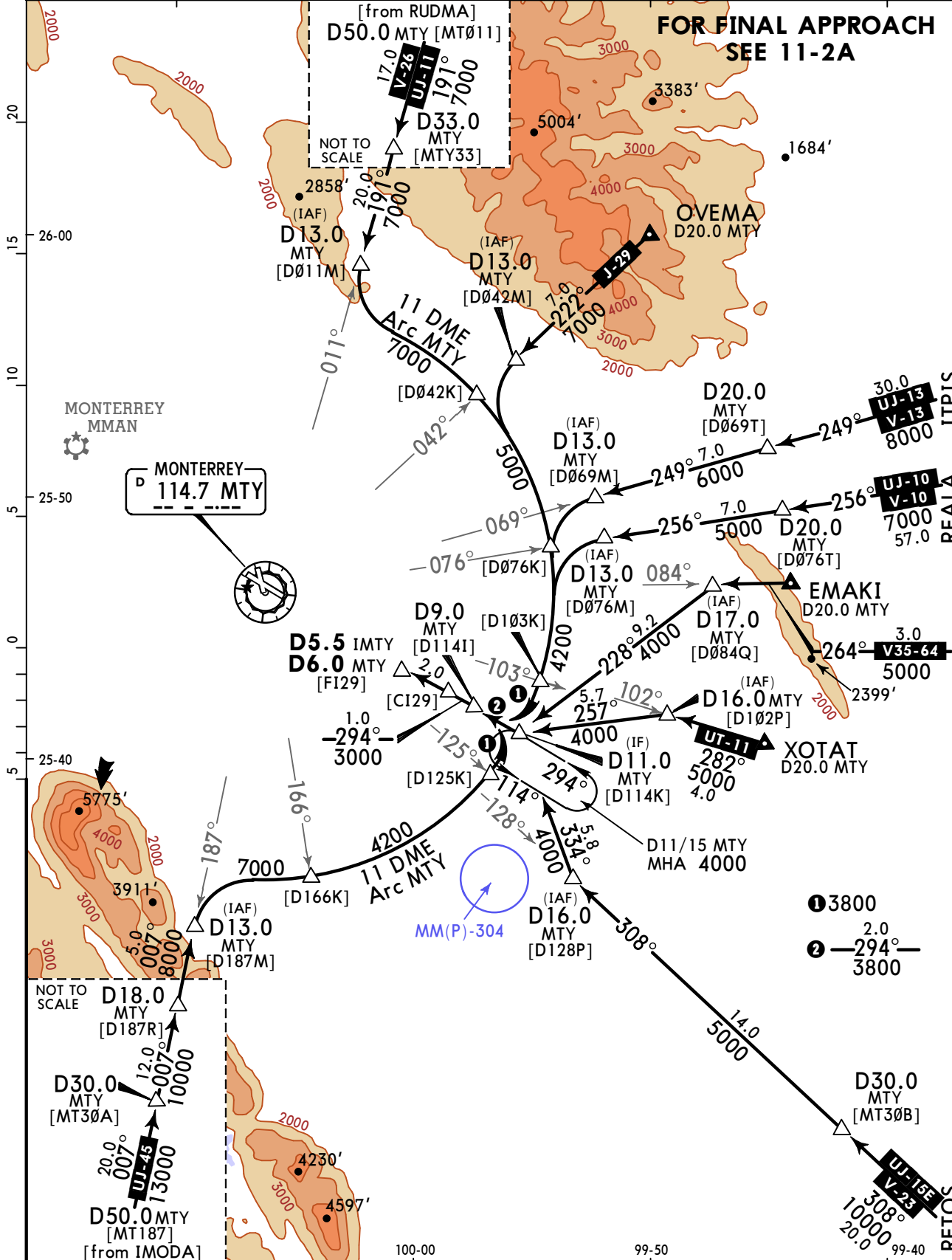
250°

6600

340°

12,500

MSA MTY VOR



MMMY/MTY
GEN MARIANO
ESCOBEDO INTL

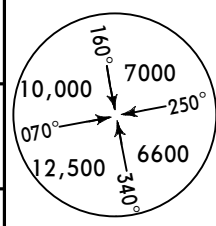
JEPPESSEN MONTERREY, MEXICO

1 NOV 19

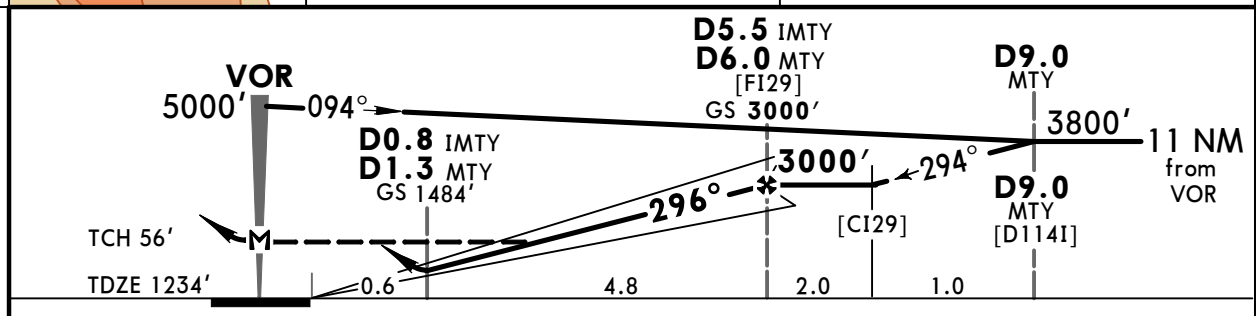
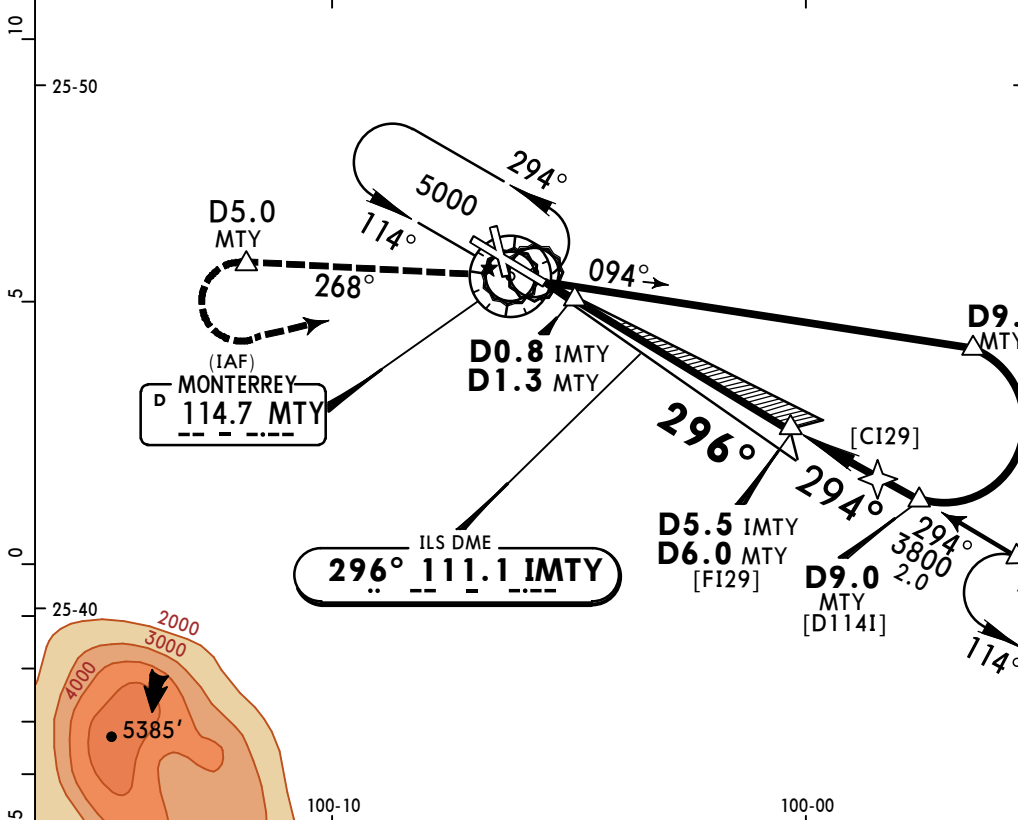
Eff 7 Nov

(11-3) ILS DME 3 or LOC Rwy 29

*ATIS 127.7	MONTERREY Approach (R) 119.75	MONTERREY Arrival 120.4	MONTERREY Tower 118.1	Ground 121.9
LOC IMTY 111.1	Final Apch Crs 296°	GS D5.5 IMTY D6.0 MTY 3000' (1766')	ILS DA(H) 1484' (250')	Apt Elev 1276' TDZE 1234'
MISSED APCH: Climb outbound on MTY VOR R-268 to D5.0 MTY then turn LEFT within 8 NM to MTY VOR to the minimum holding altitude.				
Alt Set: MB (IN on req) TDZ Elev: 44 MB Trans level: FL 195 Trans alt: 18500'				
1. ILS DME only usable by aircraft equipped with instruments that can read with a precision of 0.20 NM increments. 2. Do not simultaneously use holding patterns at the same altitude.				



RECOMMENDED ALTITUDES	
LOC (GS out)	
IMTY DME	ALTITUDE
5.5	3000'
5.0	2828'
4.0	2510'
3.0	2192'
2.0	1874'



Gnd speed-Kts	70	90	100	120	140	160	ALSF-I REIL PAPI	↑ on 114.7 R-268	D5.0 MTY
GS	3.00°	372	478	531	637	849			
MAP at VOR									
FAF to Threshold	5.4	4:38	3:36	3:14	2:42	2:19			

STRAIGHT-IN LANDING RWY29				CIRCLE-TO-LAND	
ILS		LOC (GS out)		Max Kts	MDA(H)
DA(H) 1484' (250')		MDA(H) 1600' (366')			
	FULL	ALS out		ALS out	
A					90
B					120
C	1/2	3/4	1/2	1	140
D					165

MMMY/MTY
GEN MARIANO
ESCOBEDO INTL

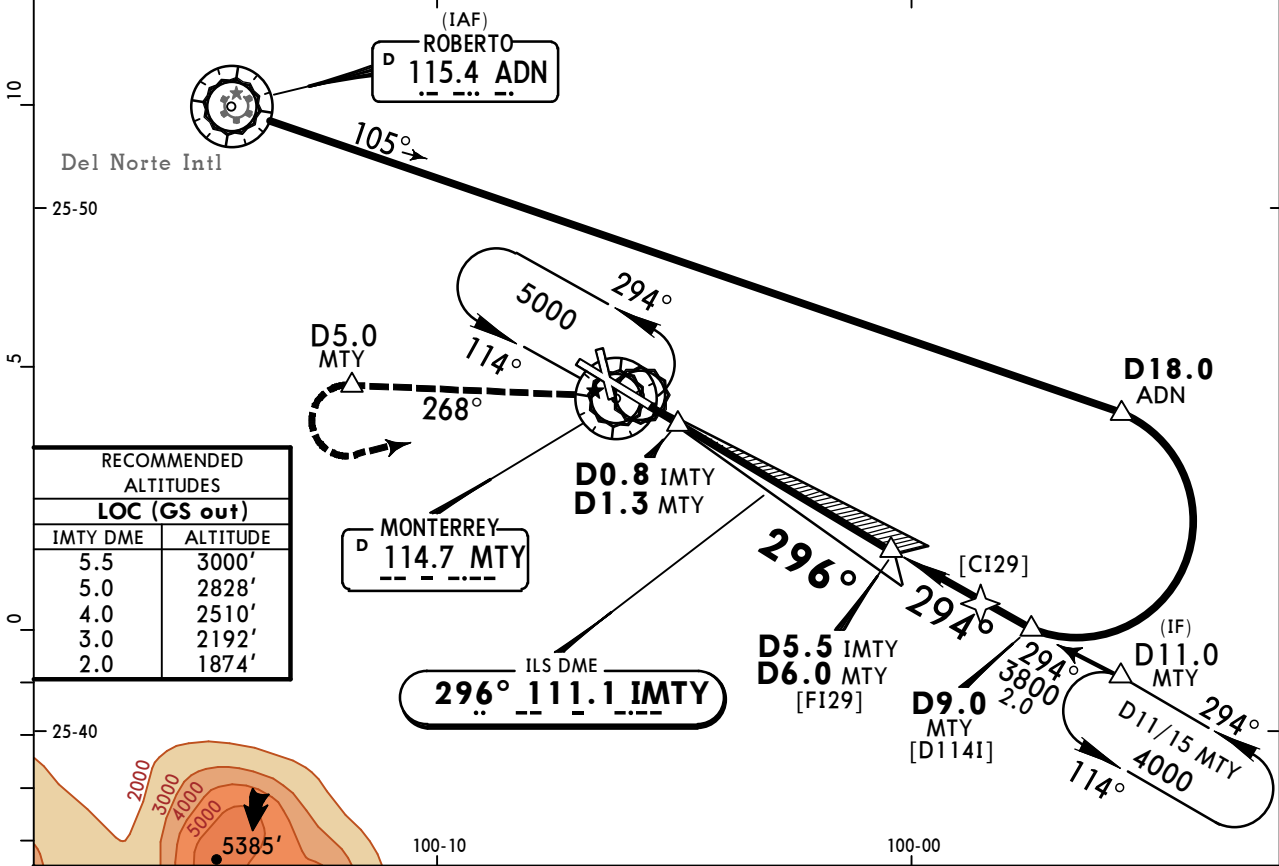
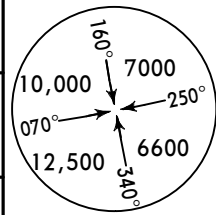
JEPPESEN MONTERREY, MEXICO

1 NOV 19

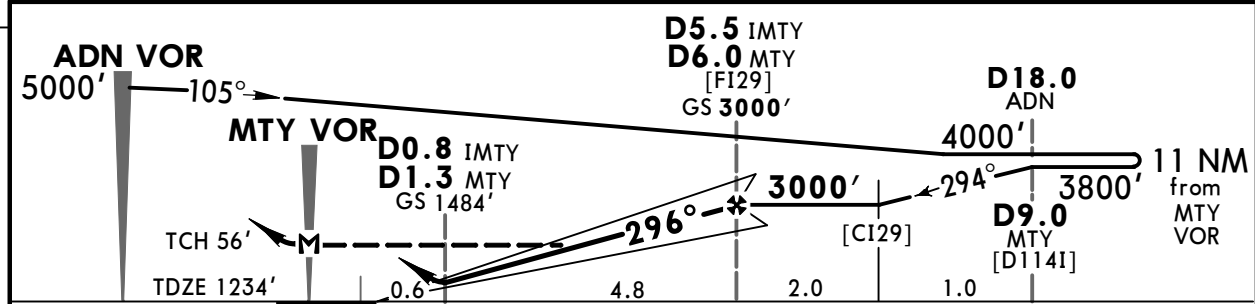
Eff 7 Nov

(11-4) ILS DME 4 or LOC Rwy 29

*ATIS 127.7	MONTERREY Approach (R) 119.75	MONTERREY Arrival 120.4	MONTERREY Tower 118.1	Ground 121.9
LOC IMTY 111.1	Final Apch Crs 296°	GS D5.5 IMTY D6.0 MTY 3000' (1766')	ILS DA(H) 1484' (250')	Apt Elev 1276' TDZE 1234'
MISSED APCH: Climb outbound on MTY VOR R-268 to D5.0 MTY then turn LEFT within 8 NM to MTY VOR to the minimum holding altitude.				
Alt Set: MB (IN on req) TDZ Elev: 44 MB Trans level: FL 195 Trans alt: 18500' 1. ILS DME only usable by aircraft equipped with instruments that can read with a precision of 0.20 NM increments. 2. Do not simultaneously use holding patterns at the same altitude.				



RECOMMENDED ALTITUDES	
LOC (GS out)	
IMTY DME	ALTITUDE
5.5	3000'
5.0	2828'
4.0	2510'
3.0	2192'
2.0	1874'



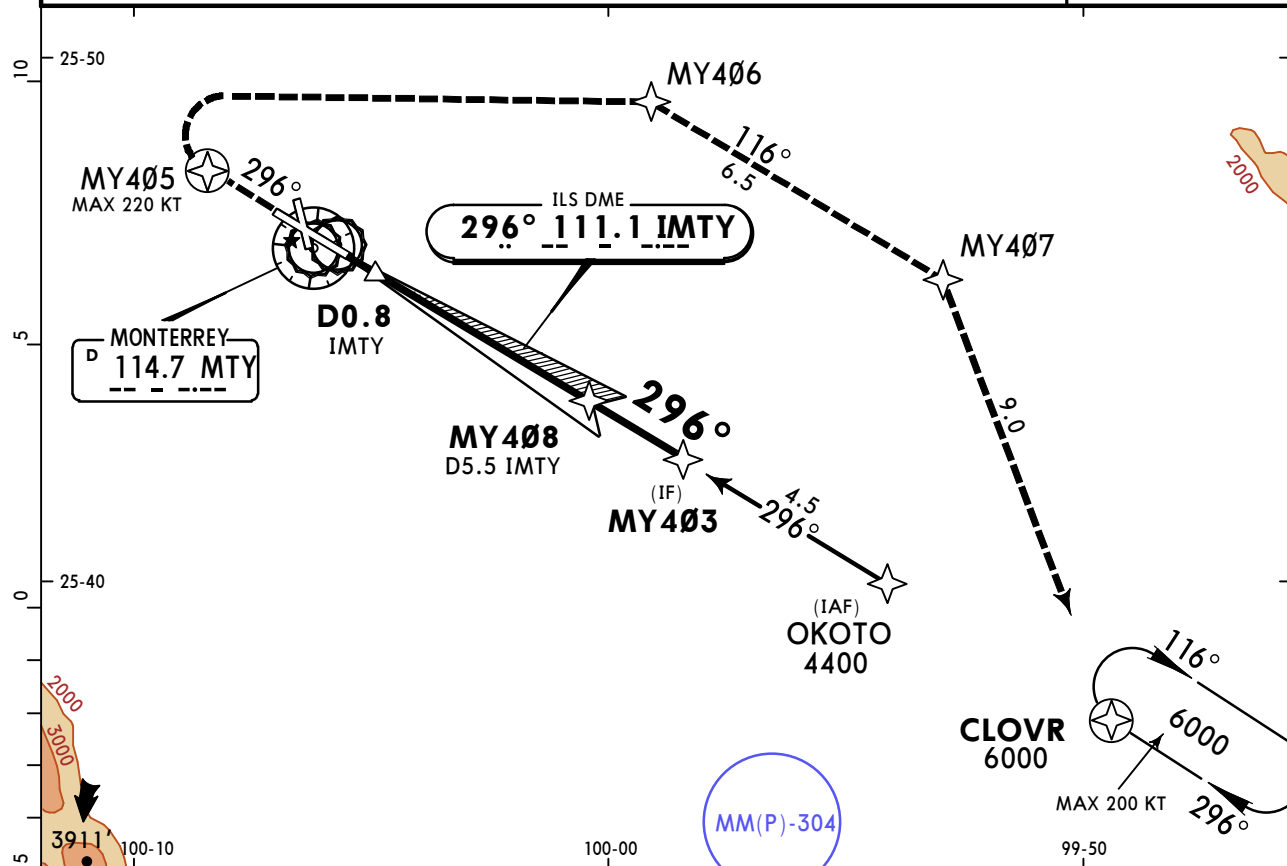
Gnd speed-Kts	70	90	100	120	140	160	ALSF-I REIL PAPI	↑ on MTY 114.7 R-268 D5.0 MTY
GS	3.00°	372	478	531	637	849		
MAP at VOR								
FAF to Threshold	5.4	4:38	3:36	3:14	2:42	2:19		

STRAIGHT-IN LANDING RWY29				CIRCLE-TO-LAND	
ILS		LOC (GS out)		Max Kts	MDA(H)
DA(H)	1484' (250')	MDA(H)	1600' (366')		
	FULL	ALS out	ALS out		
A				90	1820' (544') - 1
B				120	1820' (544') - 1
C	1/2	3/4	1/2	140	1820' (544') - 1 1/2
D				165	1860' (584') - 2

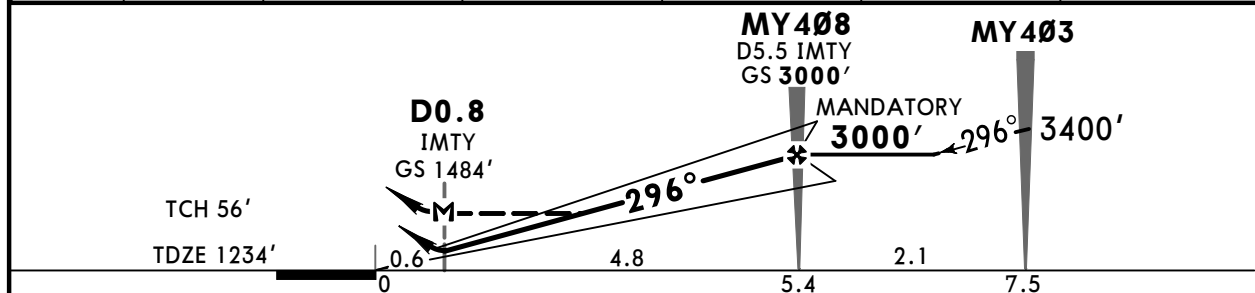
MMMY/MTY
GEN MARIANO
ESCOBEDO INTL

JEPPESEN MONTERREY, MEXICO
 1 NOV 19 **(11-5)** ILS DME 5 or LOC Rwy 29
Eff 7 Nov

*ATIS 127.7	MONTERREY Approach (R) 119.75	MONTERREY Arrival 120.4	MONTERREY Tower 118.1	Ground 121.9
LOC IMTY 111.1	Final Apch Crs 296°	Mandatory Alt MY408 3000' (1766')	ILS DA(H) 1484' (250')	Apt Elev 1276' TDZE 1234'
MISSED APCH: Climb on runway track to MY405, proceed on the missed approach to CLOVR and climb on holding pattern to 6000'.				
Alt Set: IN (MB on req)		Trans level: FL 195	Trans alt: 18500'	
1. GNSS required. 2. For initial, intermediate and missed approach, RNAV 1 is required. 3. Radar operating.				



LOC	DIST TO THR	1.0	2.0	3.0	4.0	5.4
(GS out)	ALTITUDE	1600'	1920'	2240'	2560'	3000'

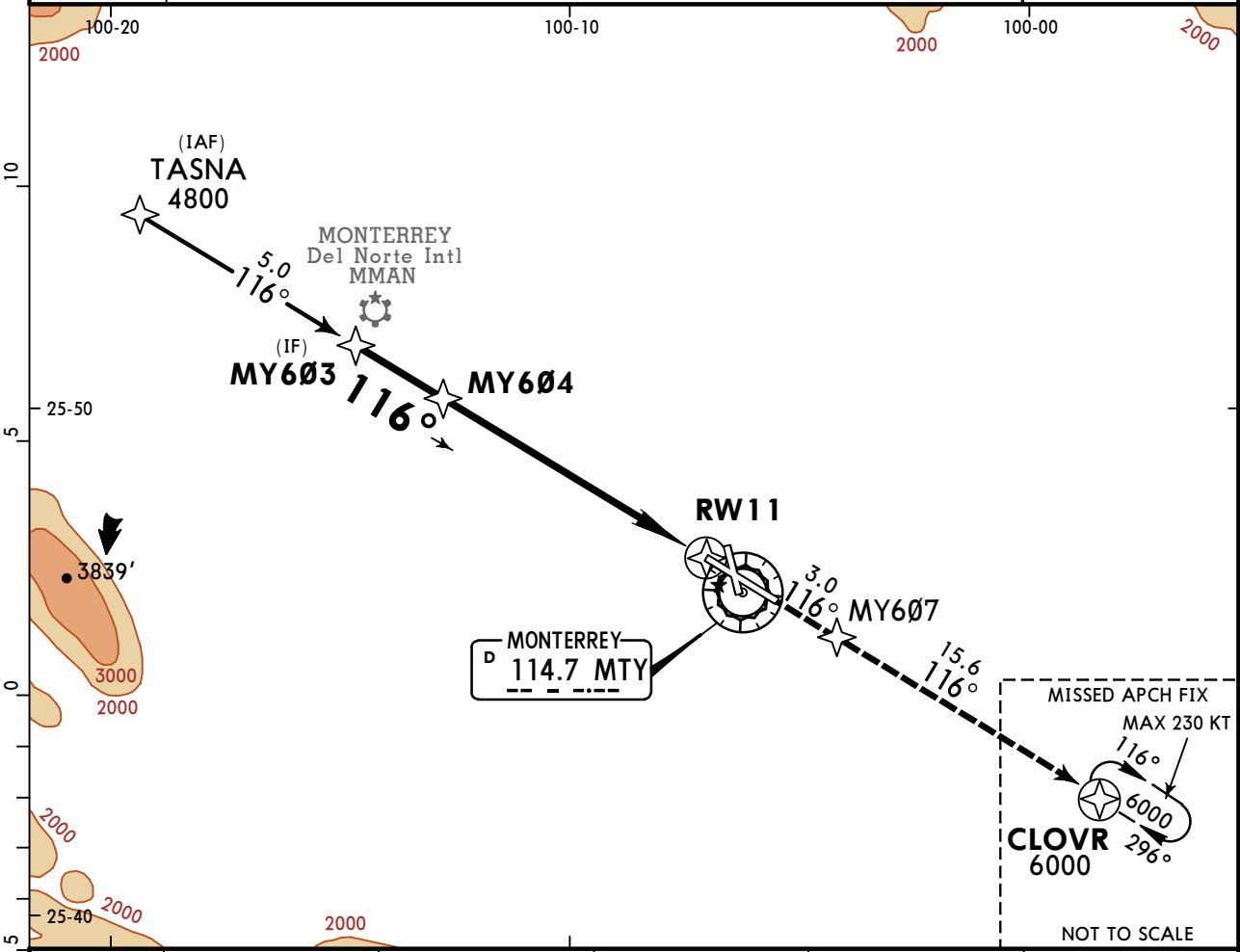
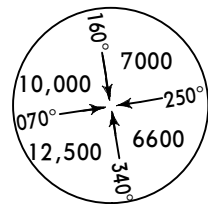


Gnd speed-Kts	70	90	100	120	140	160	ALSF-I REIL PAPI	Rwy track MY405	
GS	3.00°	372	478	531	637	743			849
MAP at D0.8 or MY408 to MAP	4.8	4:07	3:12	2:53	2:24	2:03			1:48

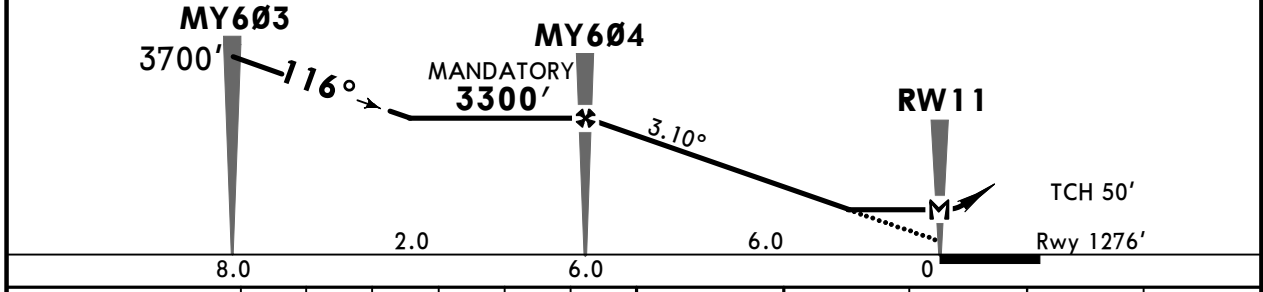
STRAIGHT-IN LANDING RWY 29				CIRCLE-TO-LAND	
ILS		LOC (GS out)		Max Kts	MDA(H)
DA(H) 1484' (250')		MDA(H) 1600' (366')			
FULL	ALS out	ALS out	ALS out	90	1820' (544') - 1
A				120	
B	1/2	3/4	1/2	140	1820' (544') - 1 1/2
C			1	165	1860' (584') - 2
D					

MMMY/MTY JEPPESEN MONTERREY, MEXICO RNP Rwy 11

*ATIS 127.7	MONTERREY Approach (R) 119.75	MONTERREY Arrival 120.4	MONTERREY Tower 118.1	Ground 121.9
RNAV	Final Apch Crs 116°	Mandatory Alt MY604 3300' (2024')	LNAV MDA(H) 1740' (464')	Apt Elev 1276' Rwy 1276'
MISSED APCH: Climb on runway track to MY607, proceed on the missed approach track to CLOVR and climb on holding pattern to 6000'.				
Alt Set: IN (MB on req)		Trans level: FL 195		Trans alt: 18500'
RNP Apch	1. GNSS required. 2. Radar operating.			MSA MTY VOR



DIST to THR	6.0	5.0	4.0	3.0	2.0
ALTITUDE	3300'	2970'	2640'	2310'	1980'



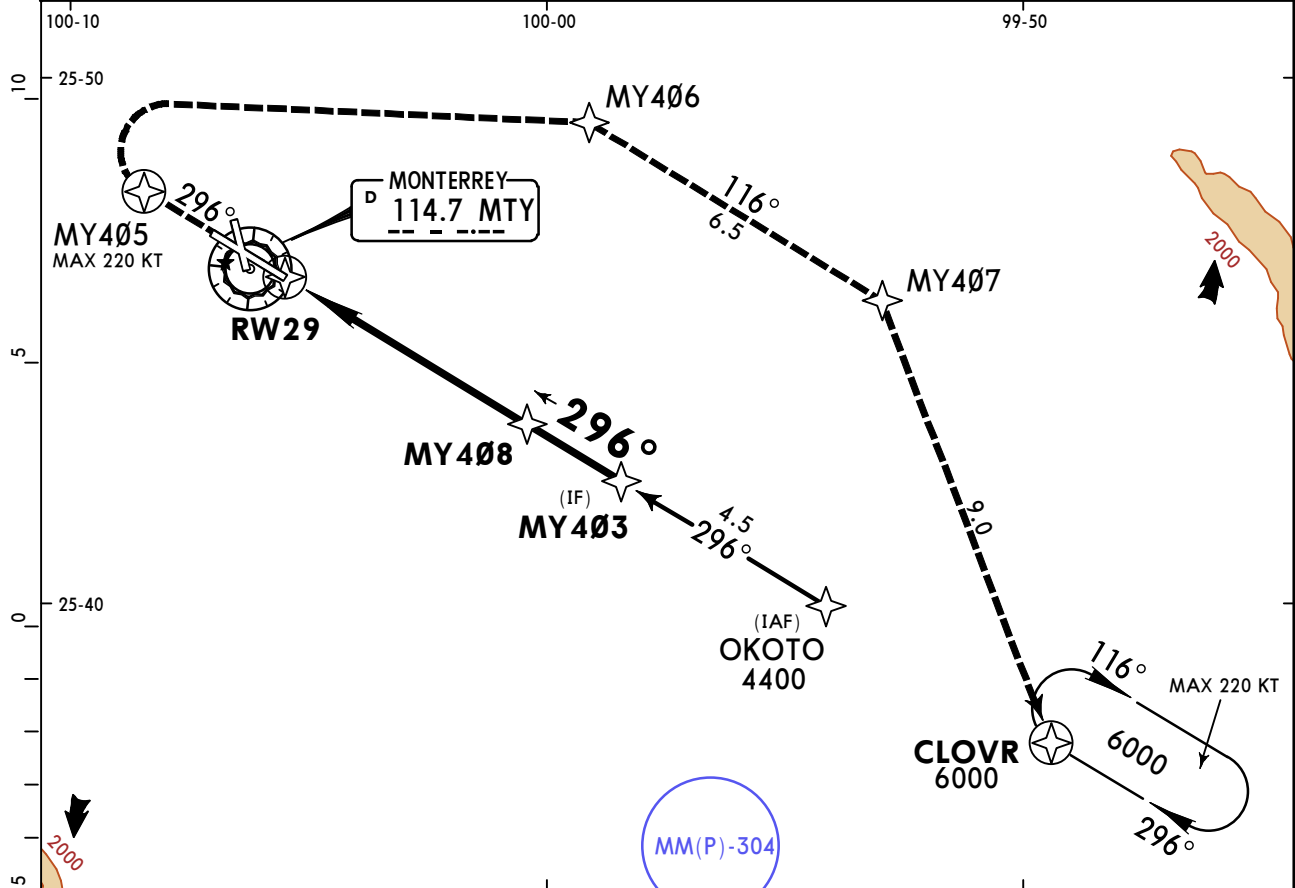
Gnd speed-Kts	70	90	100	120	140	160	SALS REIL PAPI	↑ on Rwy track MY607
Descent Angle 3.10°	384	494	548	658	768	878		
MAP at RW11 or MY604 to MAP 6.0	5:09	4:00	3:36	3:00	2:34	2:15		

STRAIGHT-IN LANDING RWY 11		CIRCLE-TO-LAND	
LNAV MDA(H) 1740' (464')		Max Kts MDA(H)	
A		90	1820' (544') - 1
B	1	120	1820' (544') - 1
C	1 1/4	140	1820' (544') - 1 1/2
D	1 1/2	165	1860' (584') - 2

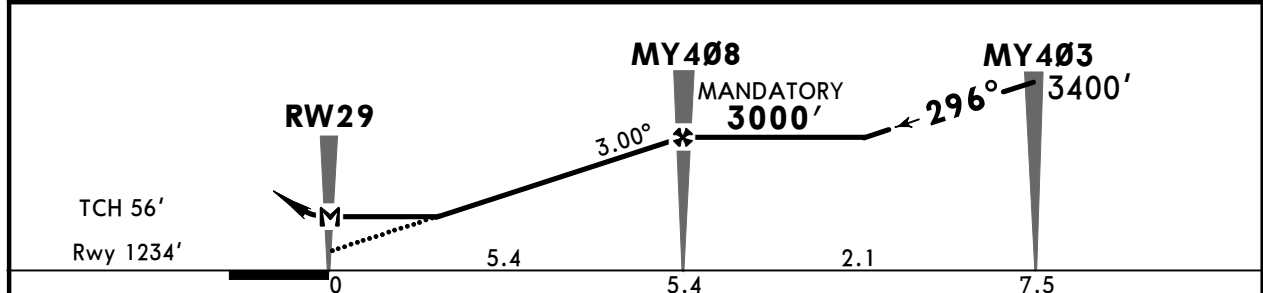
MMMY/MTY GEN MARIANO ESCOBEDO INTL **JEPPESEN MONTERREY, MEXICO** RNP Rwy 29

6 SEP 19
Eff 12 Sep 12-2

*ATIS 127.7	MONTERREY Approach (R) 119.75	MONTERREY Arrival 120.4	MONTERREY Tower 118.1	Ground 121.9
RNAV	Final Apch Crs 296°	Mandatory Alt MY408 3000' (1766')	LNAV MDA(H) 1760' (526')	Apt Elev 1276' Rwy 1234'
MISSED APCH: Climb on runway track to MY405, proceed on the missed approach track to CLOVR and climb on holding pattern to 6000'.				
Alt Set: IN (MB on req)		Trans level: FL 195		
RNP Apch	1. GNSS required. 2. RADAR operating.			



DIST to THR	1.0	2.0	3.0	4.0	5.4
ALTITUDE	1600'	1920'	2240'	2560'	3000'



Gnd speed-Kts	70	90	100	120	140	160	ALSF-I	REIL PAPI	↑ on track Rwy MY405
Descent Angle 3.00°	372	478	531	637	743	849			
MAP at RW29 or MY408 to MAP	5.4	4:38	3:36	3:14	2:42	2:19	2:02		

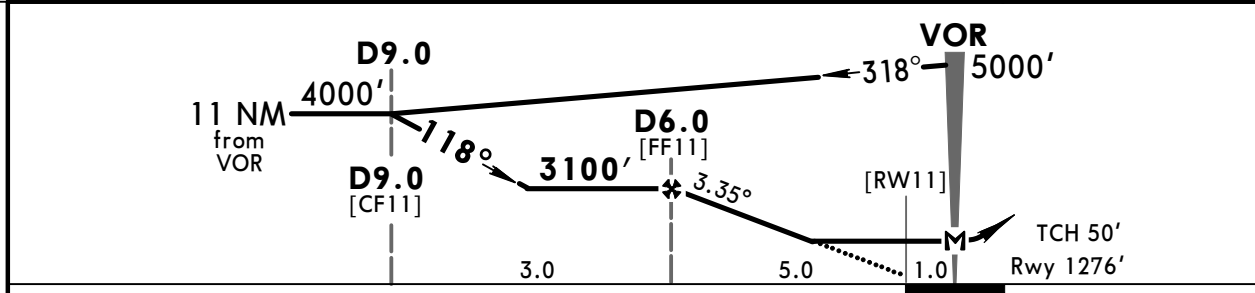
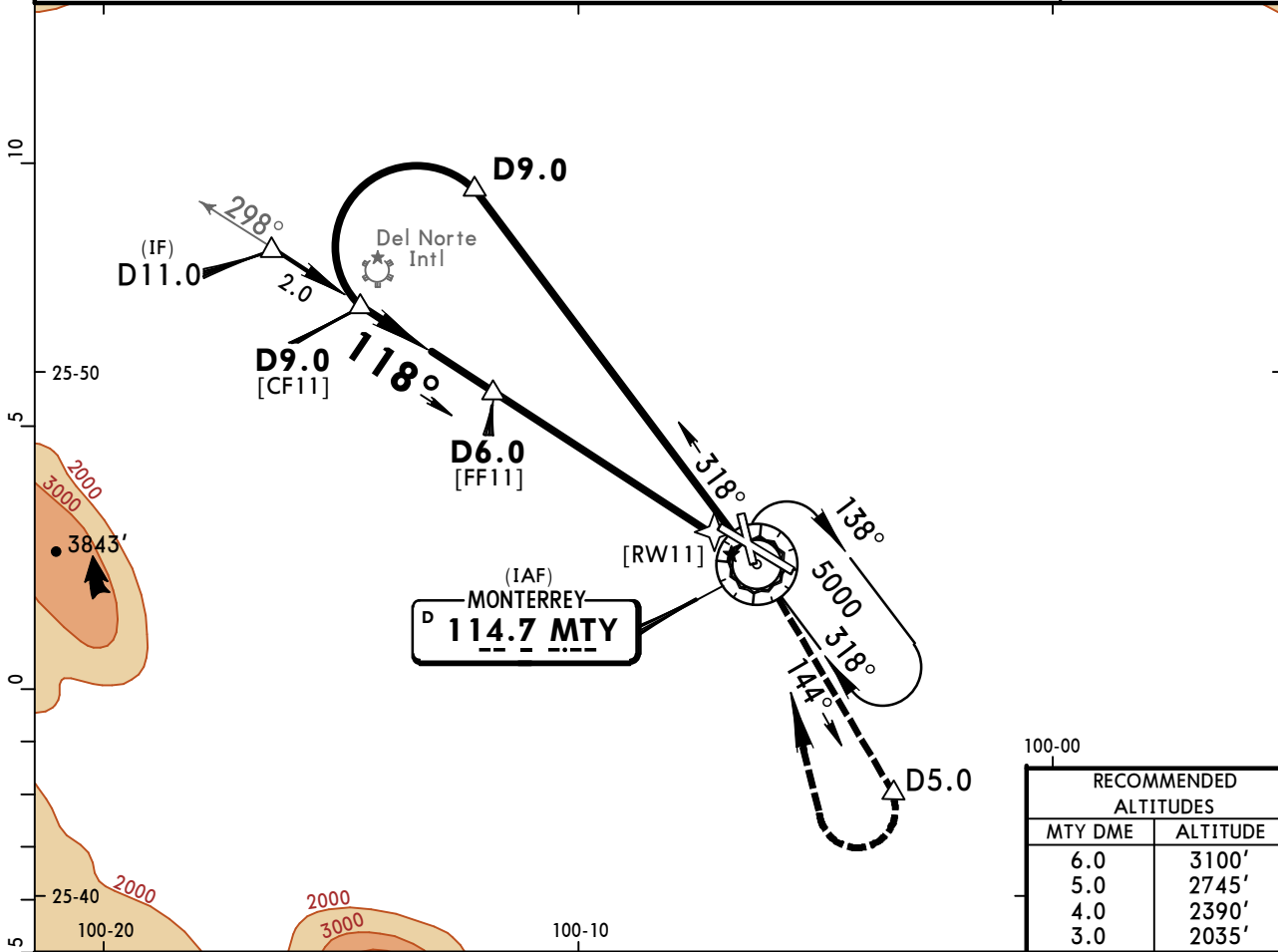
STRAIGHT-IN LANDING RWY29 LNAV			CIRCLE-TO-LAND	
MDA(H) 1760' (526')			ALS out	
A			Max Kts 90	MDA(H) 1820' (544') - 1
B	1		120	1820' (544') - 1
C	1¼		140	1820' (544') - 1½
D	1½		165	1860' (584') - 2

MMMY/MTY
GEN MARIANO ESCOBEDO INTL

JEPPESEN
 22 SEP 17 **(13-1)**

MONTERREY, MEXICO
VOR DME 1 Rwy 11

*ATIS 127.7	MONTERREY Approach (R) 119.75	MONTERREY Arrival 120.4	MONTERREY Tower 118.1	Ground 121.9
VOR MTY 114.7	Final Apch Crs 118°	Minimum Alt D6.0 3100' (1824')	MDA(H) 1740' (464')	Apt Elev 1276' Rwy 1276'
MISSED APCH: Climb outbound on MTY VOR R-144 to D5.0 MTY, then turn RIGHT within 8 NM to MTY VOR to the minimum holding altitude.				
Alt Set: MB (IN on req) Rwy Elev: 46 MB Trans level: FL 195 Trans alt: 18500'				



Gnd speed-Kts	70	90	100	120	140	160	SALS REIL PAPI	MTY on 114.7 R-144	D5.0
Descent Angle	3.35°	415	534	593	711	830			
MAP at VOR or FAF to MAP	5.0	4:17	3:20	3:00	2:30	2:09			

STRAIGHT-IN LANDING RWY11			CIRCLE-TO-LAND		
MDA(H) 1740' (464')			MDA(H)		
ALS out			Max Kts.		
A	1		90	1820' (544') - 1	
B	1		120	1820' (544') - 1	
C	1	1 1/4	140	1820' (544') - 1 1/2	
D	1 1/4	1 1/2	165	1860' (584') - 2	

MMMY/MTY

GEN MARIANO ESCOBEDO INTL

JEPPESEN

28 DEC 18

13-2

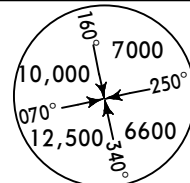
Eff 3 Jan

MONTERREY, MEXICO

TRANSITIONS FOR VOR DME 2 Rwy 11

*ATIS 127.7	MONTERREY Approach (R) 119.75	MONTERREY Arrival 120.4	MONTERREY Tower 118.1	Ground 121.9
----------------	----------------------------------	----------------------------	--------------------------	-----------------

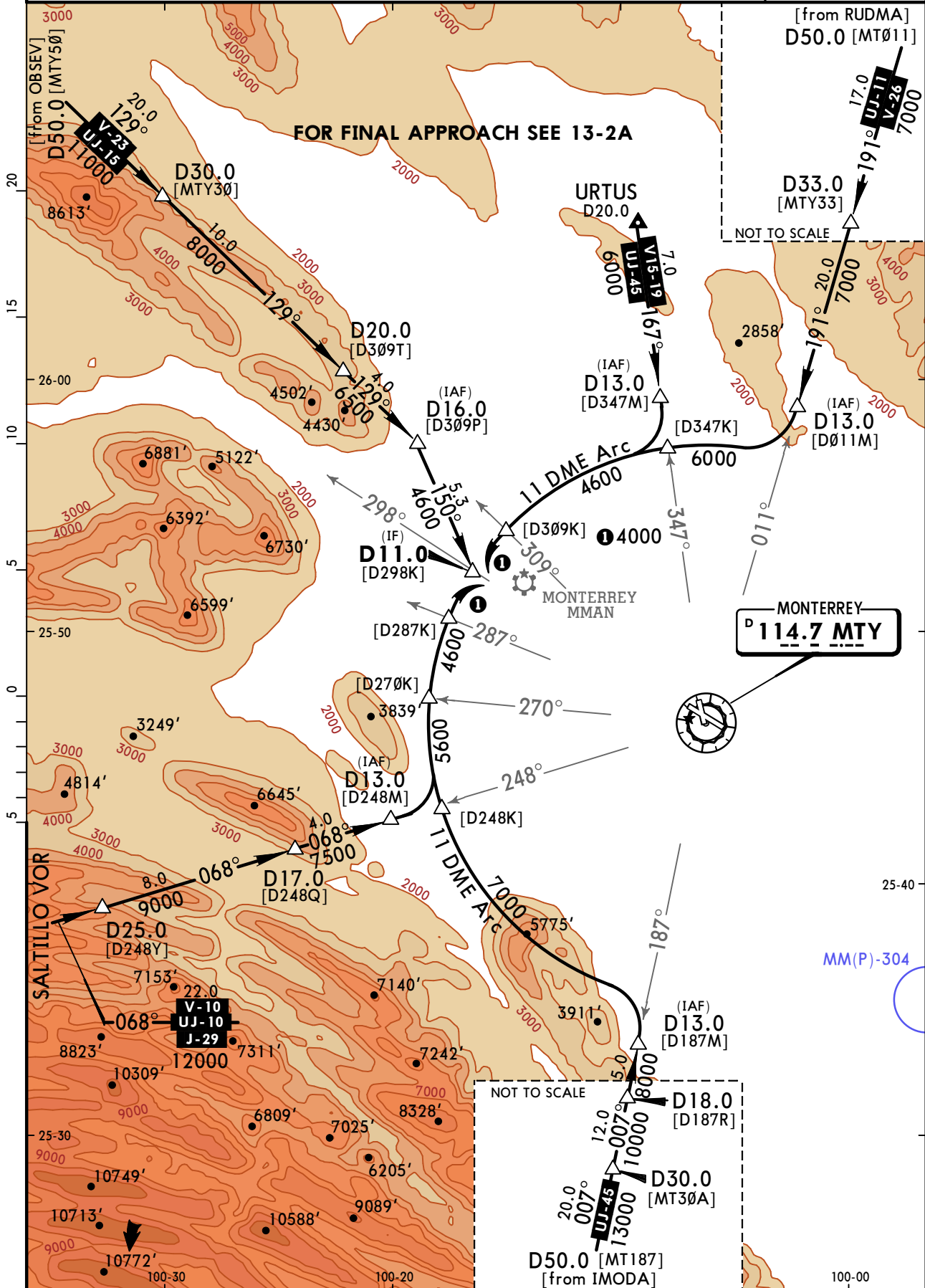
FOR FINAL APPROACH SEE 13-2A



Alt Set: MB (IN on req) Rwy Elev: 46 MB Trans level: FL 195 Trans alt: 18500'
 1. In case of DME failure at any point during the procedure, maintain last assigned altitude and proceed to the station in accordance with ATC instructions.

MSA MTY VOR

[from RUDMA]
D50.0 [MT011]



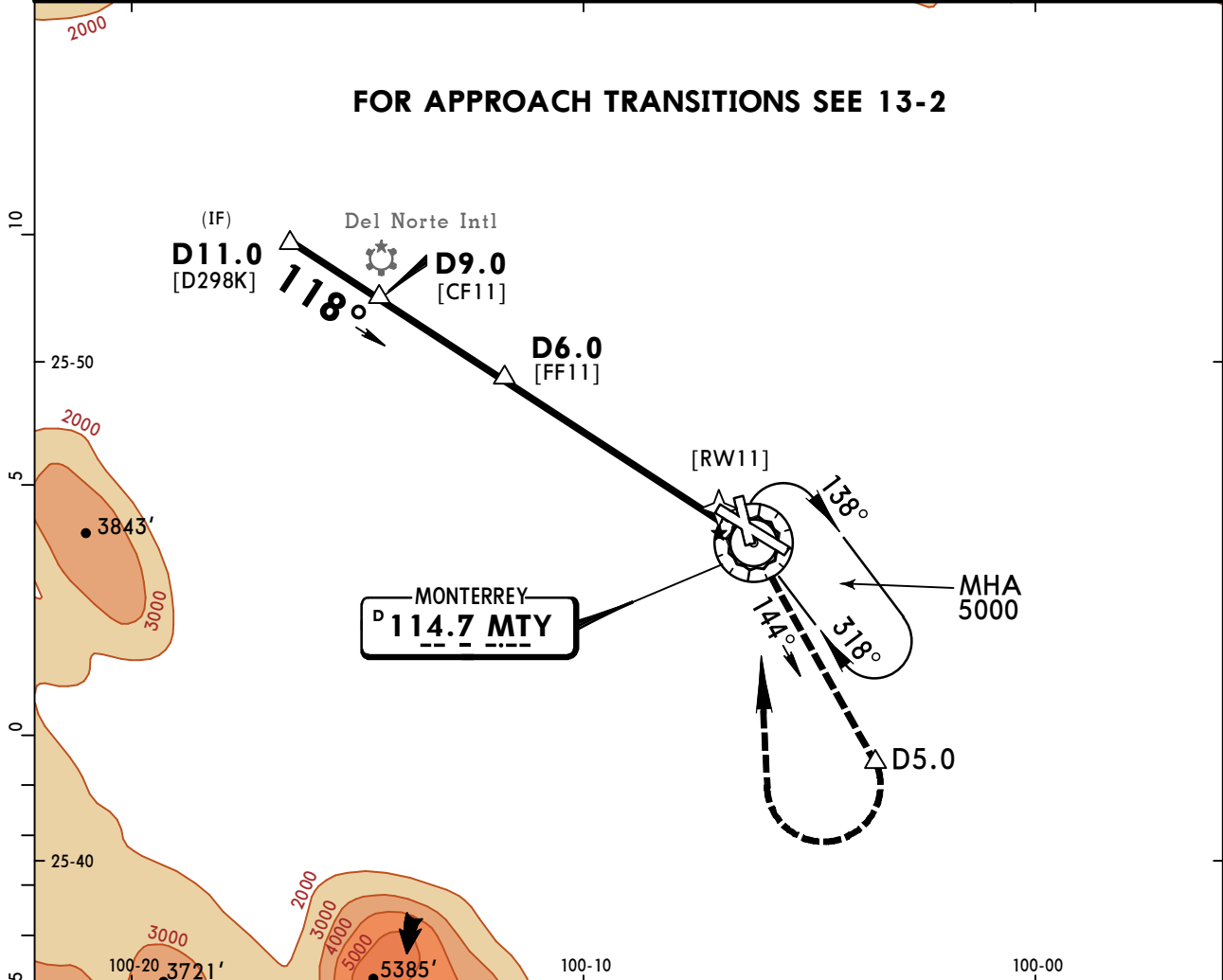
MONTERREY
D 114.7 MTY

MMMY/MTY
GEN MARIANO ESCOBEDO INTL

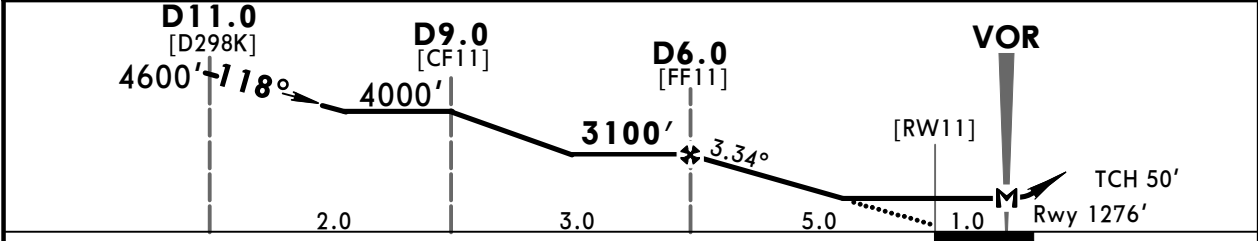
JEPPESEN MONTERREY, MEXICO
 28 DEC 18
 Eff 3 Jan **(13-2A)** **VOR DME 2 Rwy 11**

*ATIS 127.7	MONTERREY Approach (R) 119.75	MONTERREY Arrival 120.4	MONTERREY Tower 118.1	Ground 121.9
VOR MTY 114.7	Final Apch Crs 118°	Minimum Alt D6.0 3100' (1824')	MDA(H) 1740' (464')	Apt Elev 1276' Rwy 1276'
MISSED APCH: Climb outbound on MTY VOR R-144 to D5.0 MTY, turn RIGHT within 8 NM to MTY VOR to the minimum holding altitude.				<p>MSA MTY VOR</p>
Alt Set: MB (IN on req) Rwy Elev: 46 MB Trans level: FL 195 Trans alt: 18500' 1. In case of DME failure at any point during the procedure, maintain last assigned altitude and proceed to the station in accordance with ATC instructions.				

FOR APPROACH TRANSITIONS SEE 13-2



MTY DME	6.0	5.0	4.0	3.0
ALTITUDE	3100'	2745'	2390'	2035'



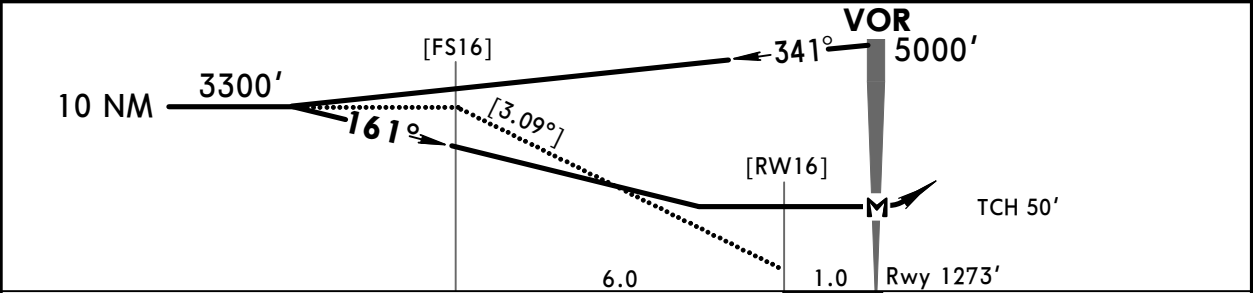
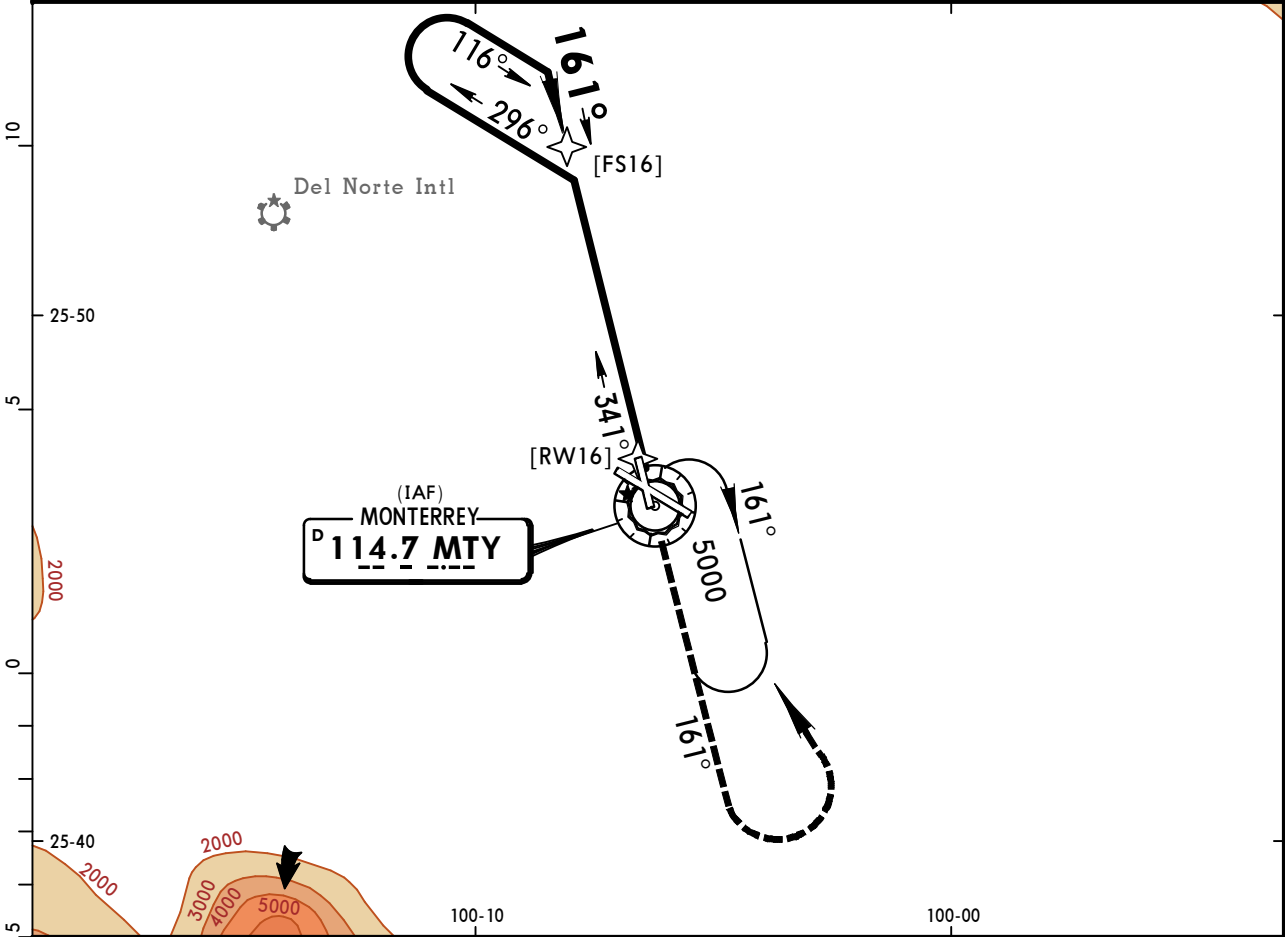
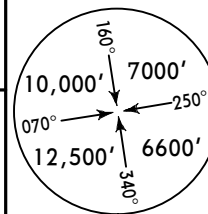
Gnd speed-Kts	70	90	100	120	140	160	SALS REIL PAPI	MTY on 114.7 R-144	D5.0
Descent Angle 3.34°	414	532	591	709	827	946			
MAP at VOR or FAF to Threshold	5.0	4:17	3:20	3:00	2:30	2:09			

STRAIGHT-IN LANDING RWY11				CIRCLE-TO-LAND			
MDA(H) 1740' (464')				MDA(H)			
ALS out				Max Kts			
A	1			90	1820' (544') - 1		
B	1			120	1820' (544') - 1		
C	1		1/4	140	1820' (544') - 1 1/2		
D	1 1/4		1/2	165	1860' (584') - 2		

MMMY/MTY
GEN MARIANO ESCOBEDO INTL

JEPESEN MONTERREY, MEXICO
 8 SEP 17 **(13-3)** **CAT A, B & C** **VOR Rwy 16**

*ATIS 127.7	MONTERREY Approach (R) 119.75	MONTERREY Arrival 120.4	MONTERREY Tower 118.1	Ground 121.9				
VOR MTY 114.7	Final Apch Crs 161°	No FAF	MDA(H) (CONDITIONAL) 1760' (487')	Apt Elev 1276' Rwy 1273'				
MISSED APCH: Climb outbound on MTY VOR R-161, then turn LEFT within 10 NM to MTY VOR to the minimum holding altitude.								
Gnd speed-Kts	80	100	120	140	160	180	200	
Max Outbound Distance	7.0	5:15	4:12	3:30	3:00	2:37	2:06	
Alt Set: MB (IN on req)				Rwy Elev: 46 MB	Trans level: FL 195	Trans alt: 18500'		MSA MTY VOR



Gnd speed-Kts	70	90	100	120	140	160	↑ on 114.7 R-161
Descent Angle 3.09°	383	492	547	656	765	875	
MAP at VOR							

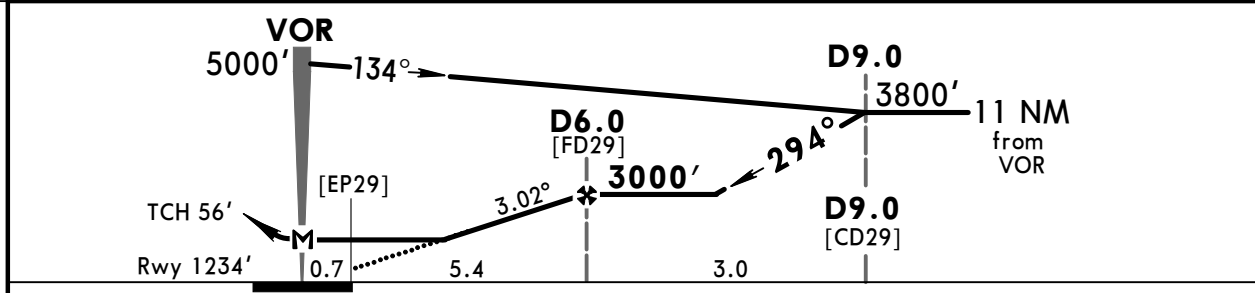
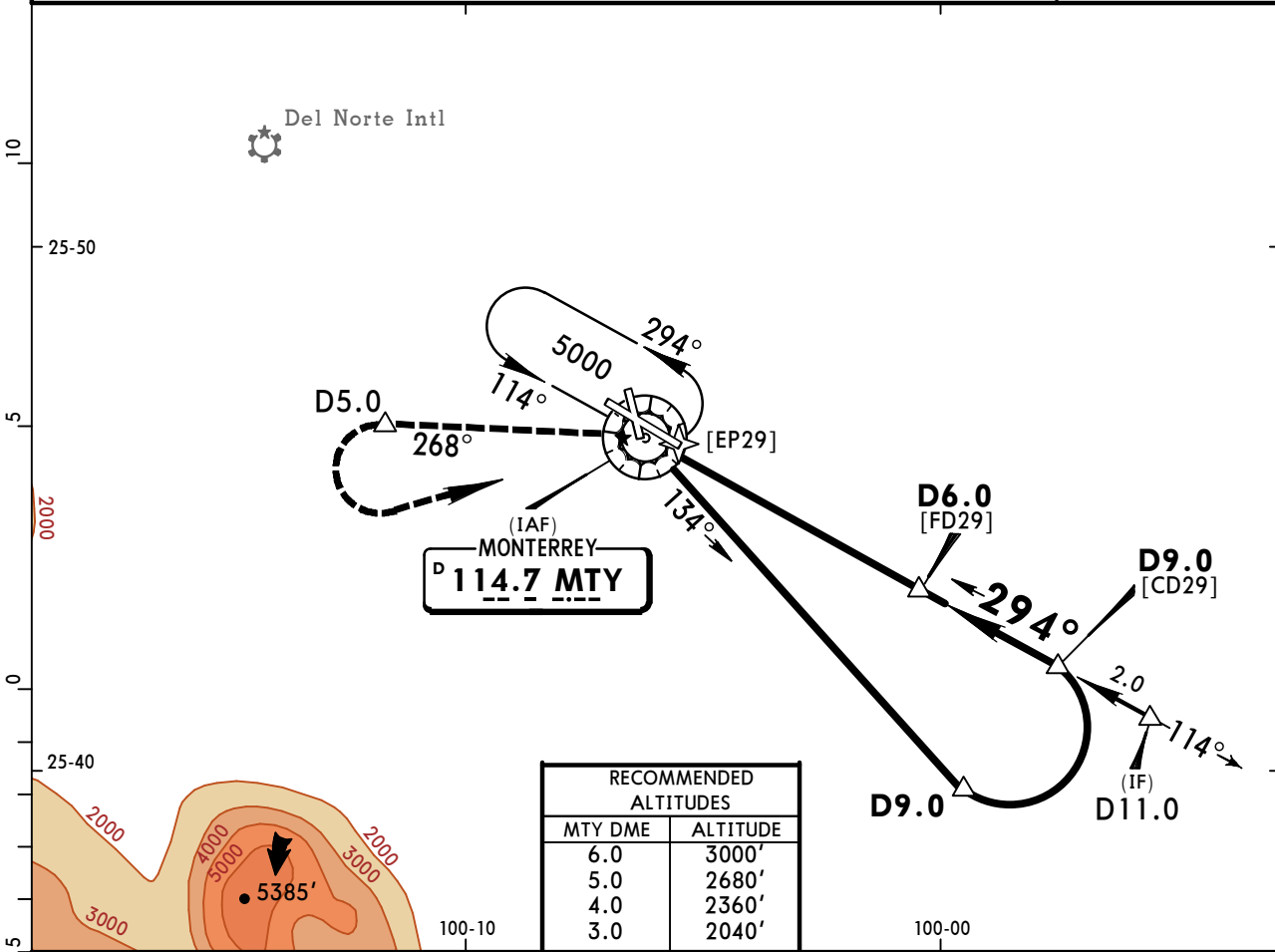
STRAIGHT-IN LANDING RWY16			CIRCLE-TO-LAND	
MDA(H) 1760' (487')		NIGHT	Max Kts	MDA(H)
A	DAY	NA	90	1820' (544') -1
B	1		120	
C	1 1/4		140	1820' (544') -1 1/2
D	NOT APPLICABLE		D	NOT APPLICABLE

MMMY/MTY
GEN MARIANO ESCOBEDO INTL

JEPPESEN
 8 SEP 17
 Eff 14 Sep (13-4)

MONTERREY, MEXICO
VOR DME-1 Rwy 29

*ATIS 127.7	MONTERREY Approach (R) 119.75	MONTERREY Arrival 120.4	MONTERREY Tower 118.1	Ground 121.9
VOR MTY 114.7	Final Apch Crs 294°	Minimum Alt D6.0 3000' (1766')	MDA(H) 1760' (526')	Apt Elev 1276' Rwy 1234'
MISSED APCH: Climb outbound on MTY VOR R-268 to D5.0 MTY, then turn LEFT within 8 NM to MTY VOR to the minimum holding altitude.				
Alt Set: MB (IN on req) Rwy Elev: 44 MB Trans level: FL 195 Trans alt: 18500'				MSA MTY VOR



Gnd speed-Kts	70	90	100	120	140	160	ALSF-I REIL PAPI	MTY on 114.7 R-268	D5.0	
Descent Angle	3.02°	374	481	534	641	748				855
MAP at VOR or FAF to Threshold	5.4	4:38	3:36	3:14	2:42	2:19				2:02

STRAIGHT-IN LANDING RWY29			CIRCLE-TO-LAND		
MDA(H) 1760' (526')			MDA(H)		
ALS out			Max Kts		
A	1		90	1820' (544') - 1	
B	1		120	1820' (544') - 1	
C	1¼	1½	140	1820' (544') - 1½	
D	1½	1¾	165	1860' (584') - 2	

MMMY/MTY
GEN MARIANO ESCOBEDO INTL

JEPPesen
28 DEC 18
(13-5)

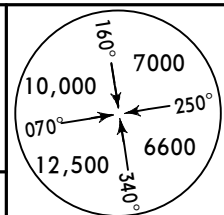
Eff 3 Jan
TRANSITIONS FOR

MONTERREY, MEXICO
VOR DME 2 Rwy 29

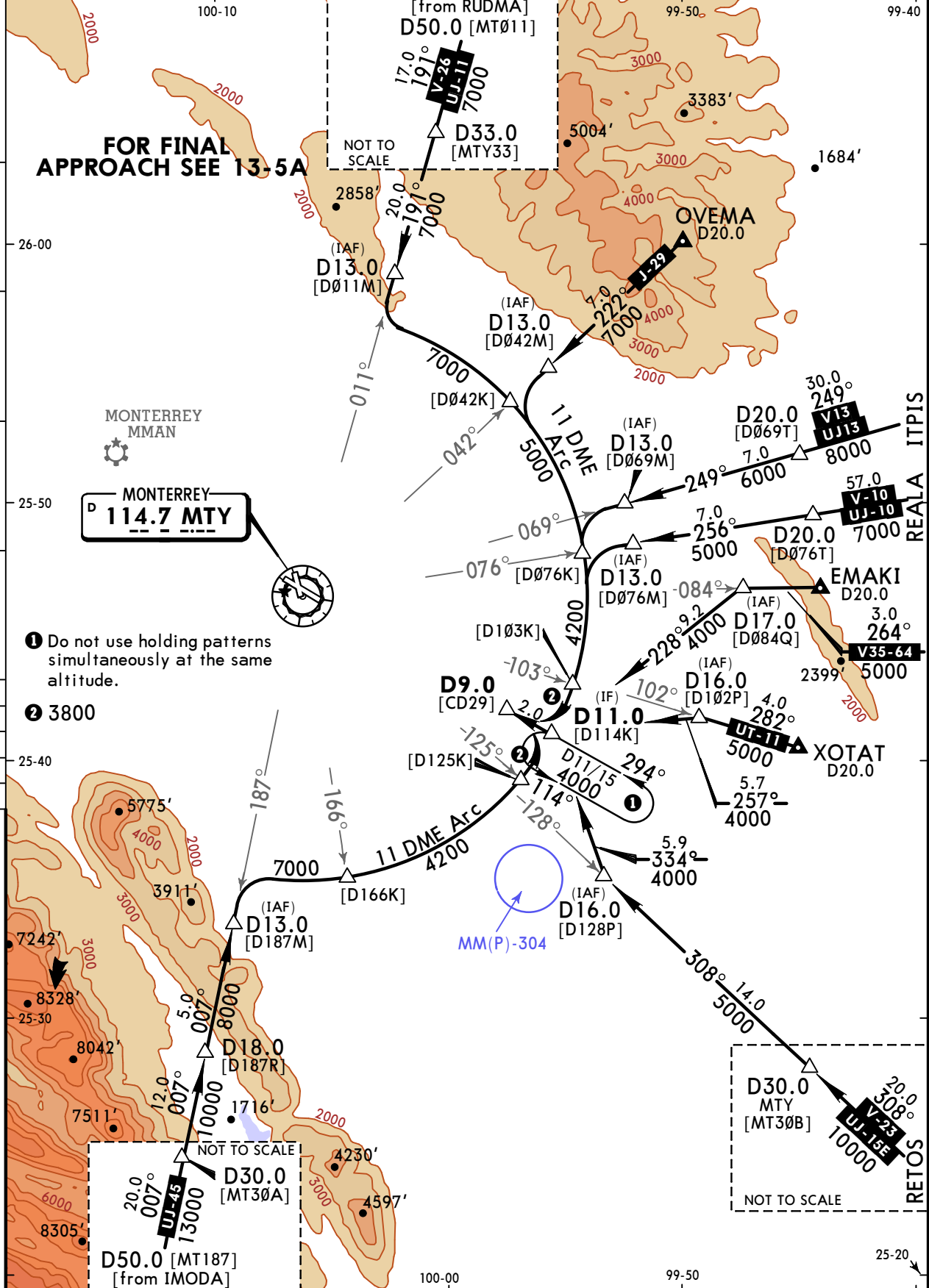
*ATIS 127.7	MONTERREY Approach (R) 119.75	MONTERREY Arrival 120.4	MONTERREY Tower 118.1	Ground 121.9
----------------	----------------------------------	----------------------------	--------------------------	-----------------

BRIEFING STRIP™

FOR FINAL APPROACH SEE 13-5A



Alt Set: MB (IN on req) Rwy Elev: 44 MB Trans level: FL 195 Trans alt: 18500'
1. In case of DME failure at any point during the procedure, maintain last assigned altitude and proceed to the station in accordance with ATC instructions.



FOR FINAL APPROACH SEE 13-5A

MONTERREY
D 114.7 MTY

1 Do not use holding patterns simultaneously at the same altitude.

2 3800

NOT TO SCALE
D50.0 [MT187] [from IMODA]
D30.0 [MT30A]
20.0 007°
13000

NOT TO SCALE
D30.0 MTY [MT30B]
20.0 308°
10000
RETOS S

MMMY/MTY

GEN MARIANO ESCOBEDO INTL

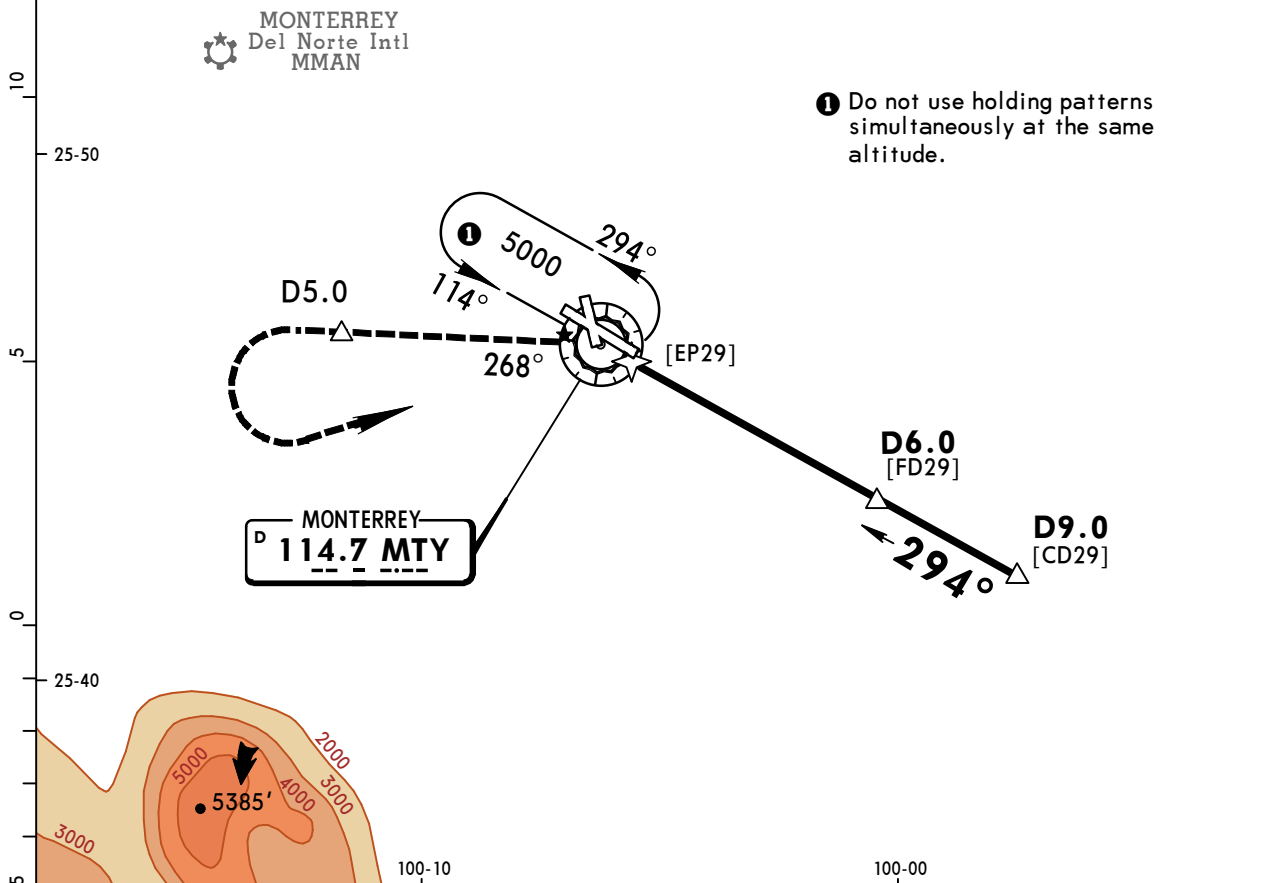
28 DEC 18
Eff 3 Jan

13-5A

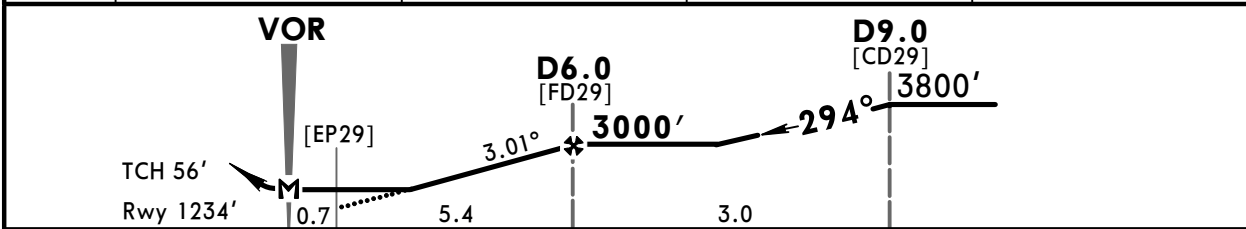
JEPPESEN MONTERREY, MEXICO
VOR DME 2 Rwy 29

*ATIS 127.7	MONTERREY Approach (R) 119.75	MONTERREY Arrival 120.4	MONTERREY Tower 118.1	Ground 121.9
VOR MTY 114.7	Final Apch Crs 294°	Minimum Alt D6.0 3000' (1766')	MDA(H) 1760' (526')	Apt Elev 1276' Rwy 1234'
MISSED APCH: Climb outbound on MTY VOR R-268 to D5.0 MTY, then turn LEFT within 8 NM to MTY VOR to the minimum holding altitude.				
Alt Set: MB (IN on req) Rwy Elev: 44 MB Trans level: FL 195 Trans alt: 18500' 1. In case of DME failure at any point during the procedure, maintain last assigned altitude and proceed to the station in accordance with ATC instructions.				

FOR APPROACH TRANSITIONS SEE 13-5



MTY DME	3.0	4.0	5.0	6.0
ALTITUDE	2040'	2360'	2680'	3000'



Gnd speed-Kts	70	90	100	120	140	160	ALSF-I REIL PAPI ↑ on 114.7 R-268 D5.0
Descent Angle 3.01°	373	479	532	639	745	852	
MAP at VOR or FAF to Threshold 5.4	4:38	3:36	3:14	2:42	2:19	2:02	

STRAIGHT-IN LANDING RWY 29			CIRCLE-TO-LAND		
MDA(H) 1760' (526')			MDA(H)		
		ALS out	Max Kts		
A			90	1820' (544') - 1	
B	1		120		
C	1¼	1½	140	1820' (544') - 1½	
D	1½	1¾	165	1860' (584') - 2	

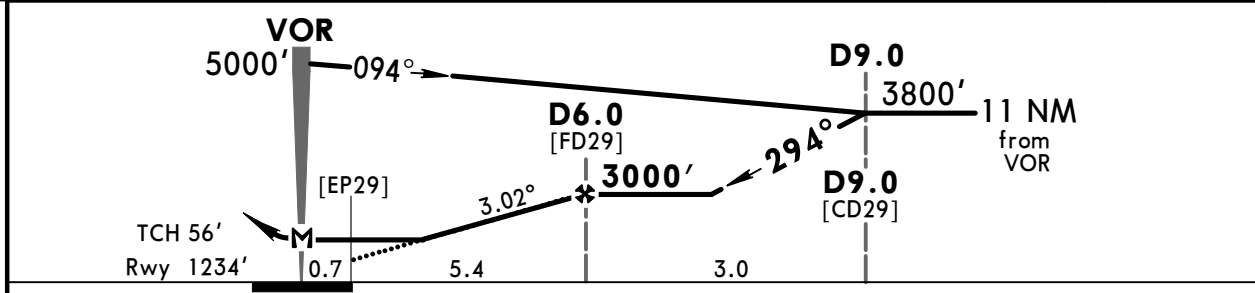
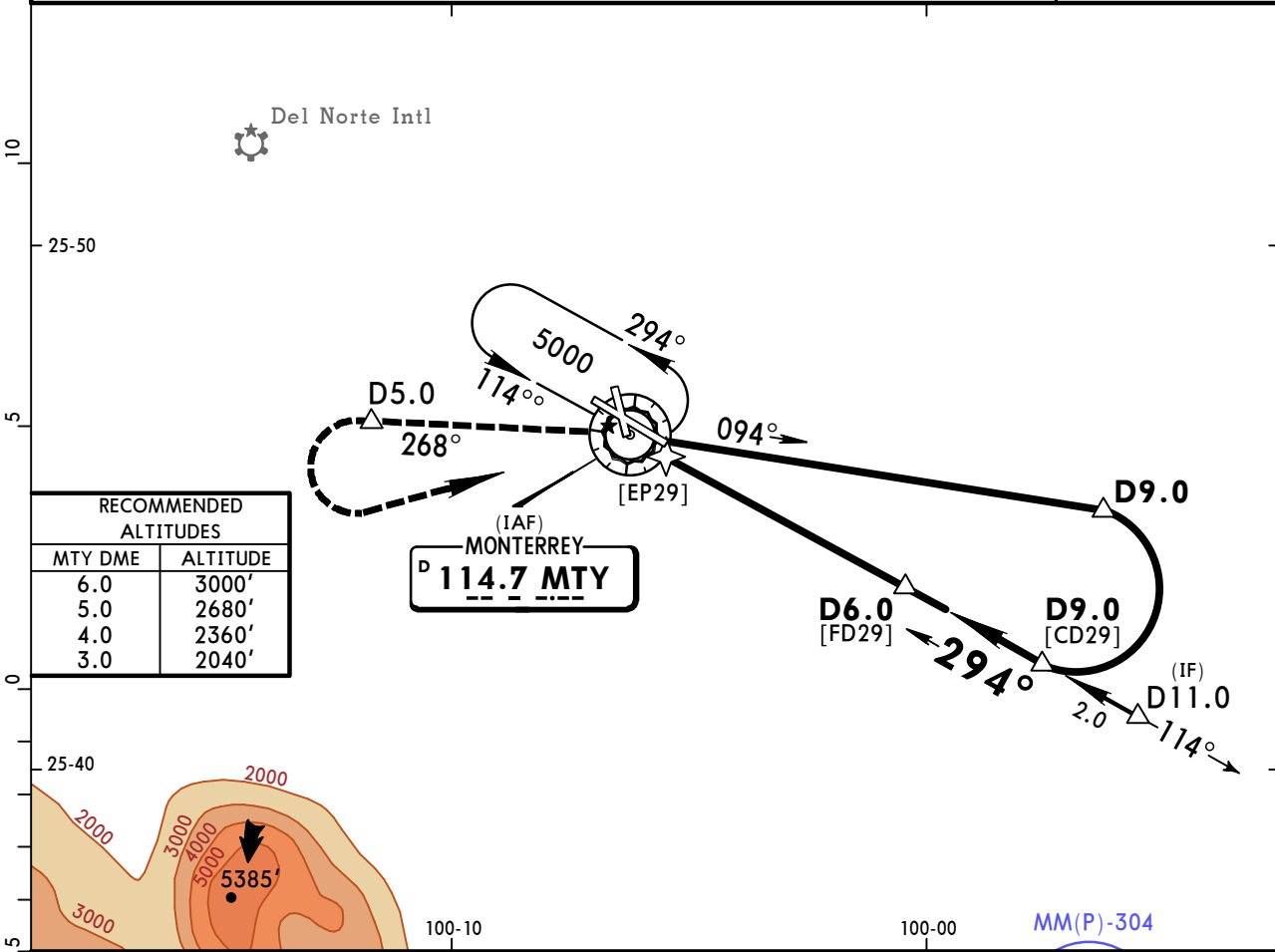
CHANGES: Descent Angle.

MMMY/MTY
GEN MARIANO ESCOBEDO INTL

JEPPESSEN
 22 SEP 17 (13-6)

MONTERREY, MEXICO
VOR DME 3 Rwy 29

*ATIS 127.7	MONTERREY Approach (R) 119.75	MONTERREY Arrival 120.4	MONTERREY Tower 118.1	Ground 121.9
VOR MTY 114.7	Final Apch Crs 294°	Minimum Alt D6.0 3000' (1766')	MDA(H) 1760' (526')	Apt Elev 1276' Rwy 1234'
MISSED APCH: Climb outbound on MTY VOR R-268 to D5.0 MTY, then turn LEFT within 8 NM to MTY VOR to the minimum holding altitude.				
Alt Set: MB (IN on req) Rwy Elev: 44 MB Trans level: FL 195 Trans alt: 18500'				



Gnd speed-Kts	70	90	100	120	140	160	ALSF-I REIL PAPI ↑ on 114.7 R-268	MTY D5.0
Descent Angle 3.02°	374	481	534	641	748	855		
MAP at VOR or FAF to Threshold	5.4	4:38	3:36	3:14	2:42	2:19		

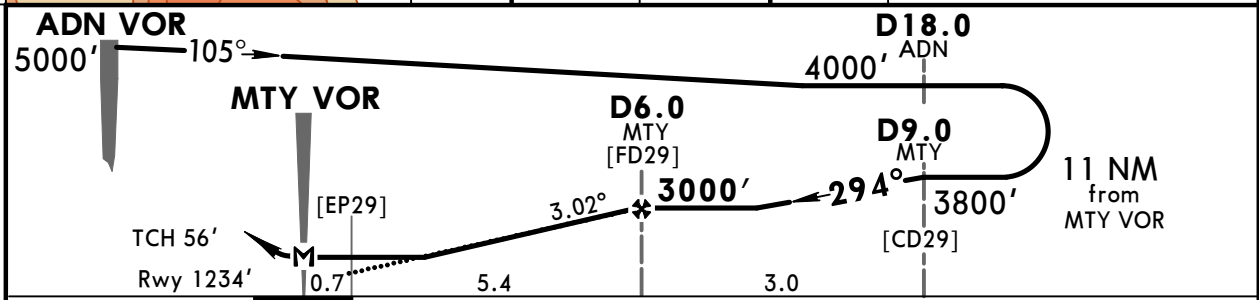
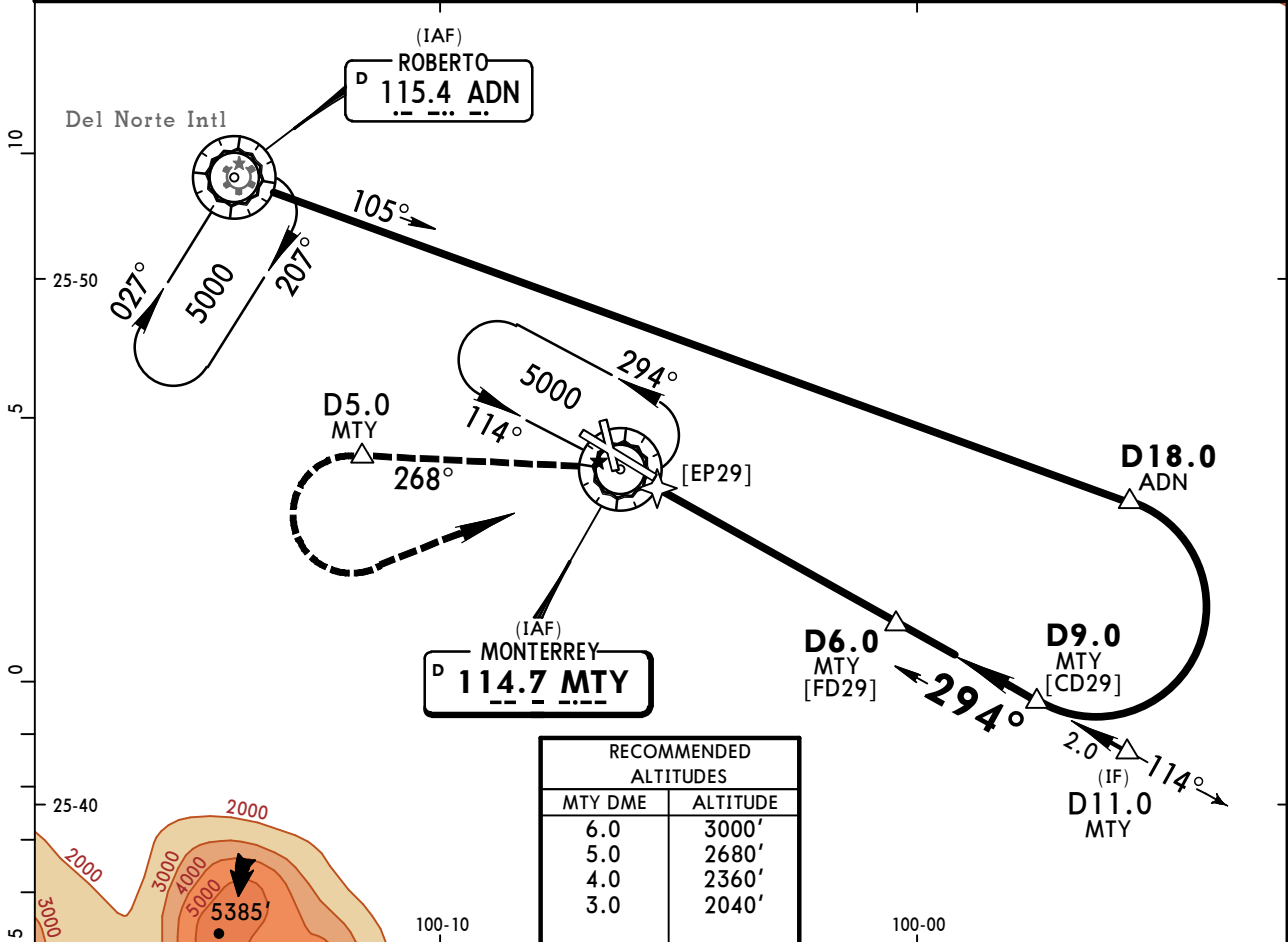
STRAIGHT-IN LANDING RWY29			CIRCLE-TO-LAND	
MDA(H) 1760' (526')			MDA(H)	
ALS out			Max Kts.	
A	1		90	
B	1		120	1820' (544') - 1
C	1¼	1½	140	1820' (544') - 1½
D	1½	1¾	165	1860' (584') - 2

MMMY/MTY
GEN MARIANO ESCOBEDO INTL

JEPPESEN
 8 SEP 17
Eff 14 Sep 13-7

MONTERREY, MEXICO
VOR DME-4 Rwy 29

*ATIS 127.7	MONTERREY Approach (R) 119.75	MONTERREY Arrival 120.4	MONTERREY Tower 118.1	Ground 121.9
VOR MTY 114.7	Final Apch Crs 294°	Minimum Alt D6.0 MTY 3000' (1766')	MDA(H) 1760' (526')	Apt Elev 1276' Rwy 1234'
MISSED APCH: Climb outbound on MTY VOR R-268 to D5.0 MTY, then turn LEFT within 8 NM to MTY VOR at the minimum holding altitude.				
Alt Set: MB (IN on req)	Rwy Elev: 44 MB	Trans level: FL 195	Trans alt: 18500'	



Gnd speed-Kts	70	90	100	120	140	160		MTY on 114.7 R-268	D5.0 MTY
Descent Angle 3.02°	374	481	534	641	748	855			
MAP at MTY VOR or									
FAF to Threshold 5.4	4:38	3:36	3:14	2:42	2:19	2:02			

STRAIGHT-IN LANDING RWY 29			CIRCLE-TO-LAND		
MDA(H) 1760' (526')			MDA(H)		
		ALS out	Max Kts		
A			90		
B		1	120		1820' (544') - 1
C	1¼		140		1820' (544') - 1½
D	1½		165		1860' (584') - 2

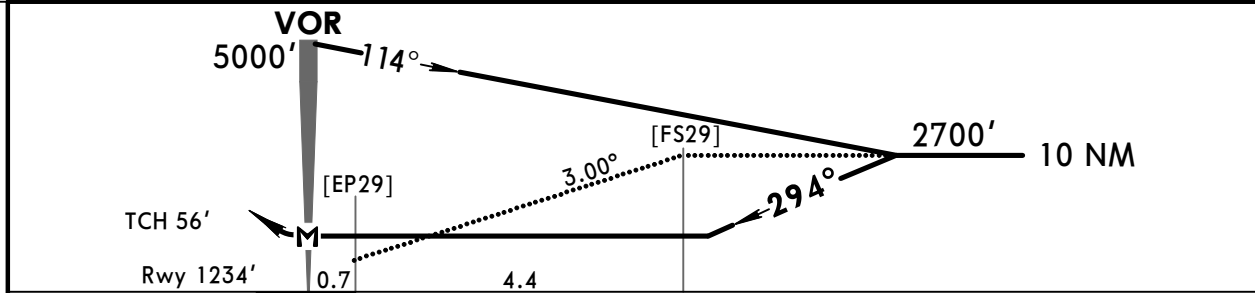
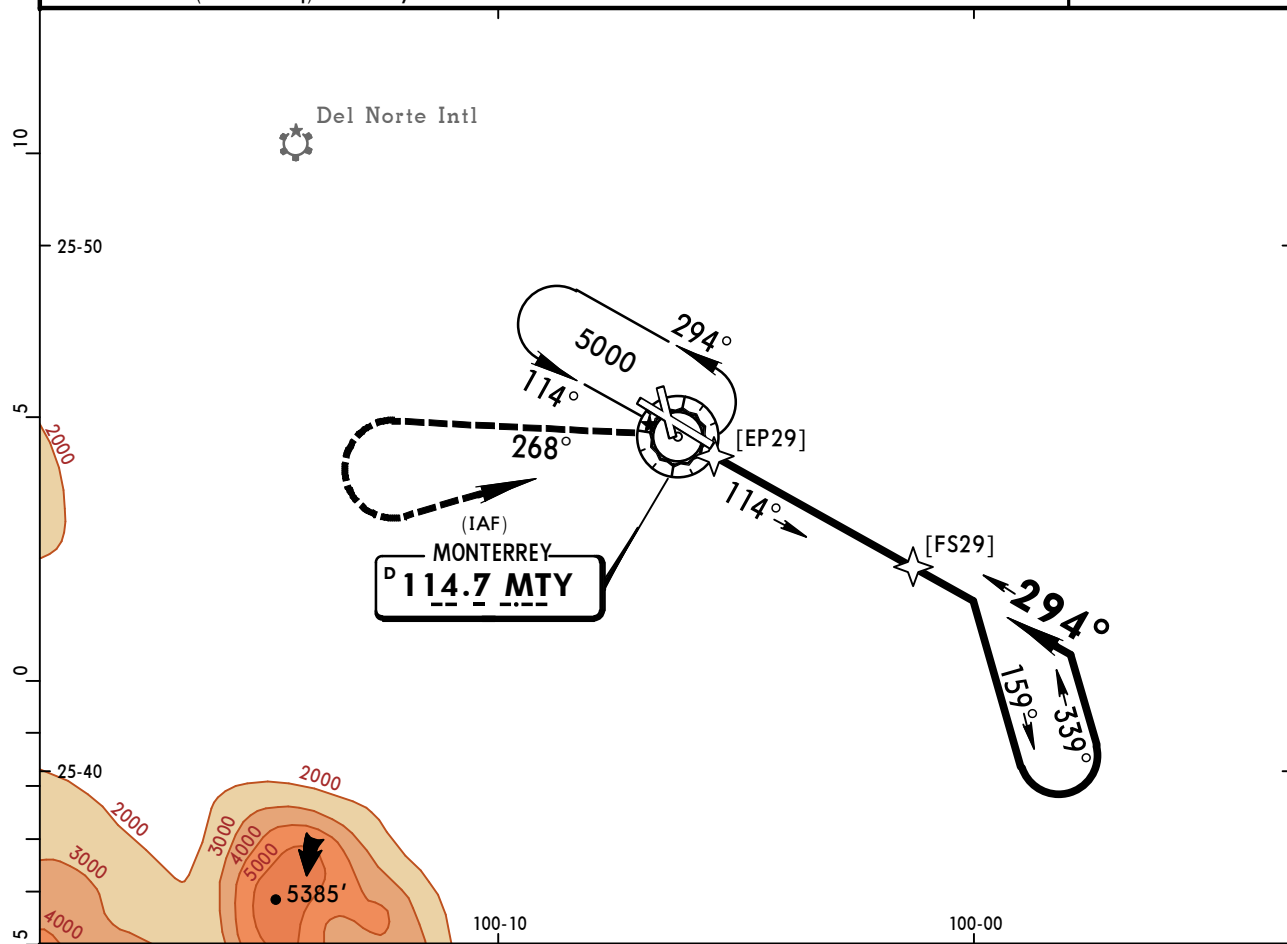
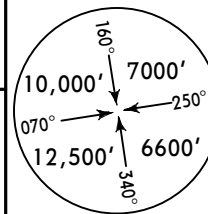
CHANGES: Procedure bearings, VNAV, minimums.

MMMY/MTY
GEN MARIANO ESCOBEDO INTL



MONTERREY, MEXICO
VOR Rwy 29

*ATIS 127.7	MONTERREY Approach (R) 119.75	MONTERREY Arrival 120.4	MONTERREY Tower 118.1	Ground 121.9			
VOR MTY 114.7	Final Apch Crs 294°	No FAF	MDA(H) 1820' (586')	Appt Elev 1276' Rwy 1234'			
MISSED APCH: Climb outbound on MTY VOR R-268, then turn LEFT within 8 NM to MTY VOR at the minimum holding altitude.							
Gnd speed-Kts	80	100	120	140	160	180	200
Max Outbound Distance	5.0	3:45	3:00	2:30	2:09	1:53	1:40
Alt Set: MB (IN on req)				Rwy Elev: 46 MB	Trans level: FL 195		Trans alt: 18500'



Gnd speed-Kts	70	90	100	120	140	160	ALS REIL PAPI	↑ on 114.7 R-268
Descent Angle	3.00°	372	478	531	637	743		
MAP at VOR								

STRAIGHT-IN LANDING RWY 29			CIRCLE-TO-LAND		
MDA(H) 1820' (586')			MDA(H)		
		ALS out	Max Kts		
A			90	1820'(544') -1	
B		1	120	1820'(544') -1	
C	1¼		140	1820'(544') -1½	
D	1½		165	1860'(584') -2	

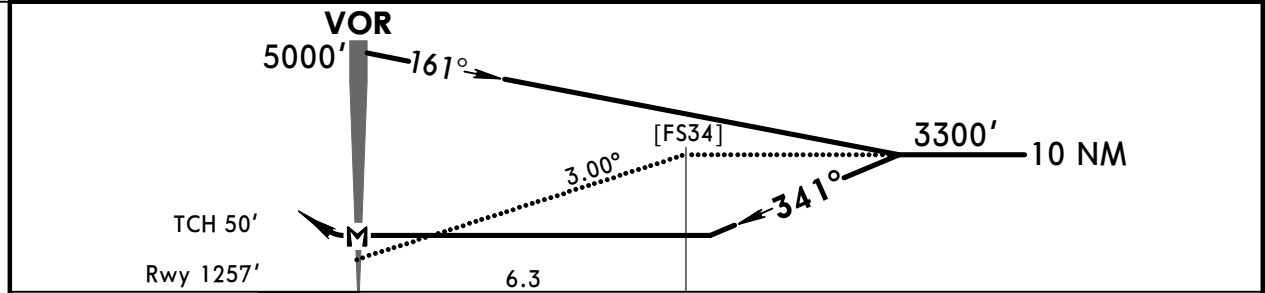
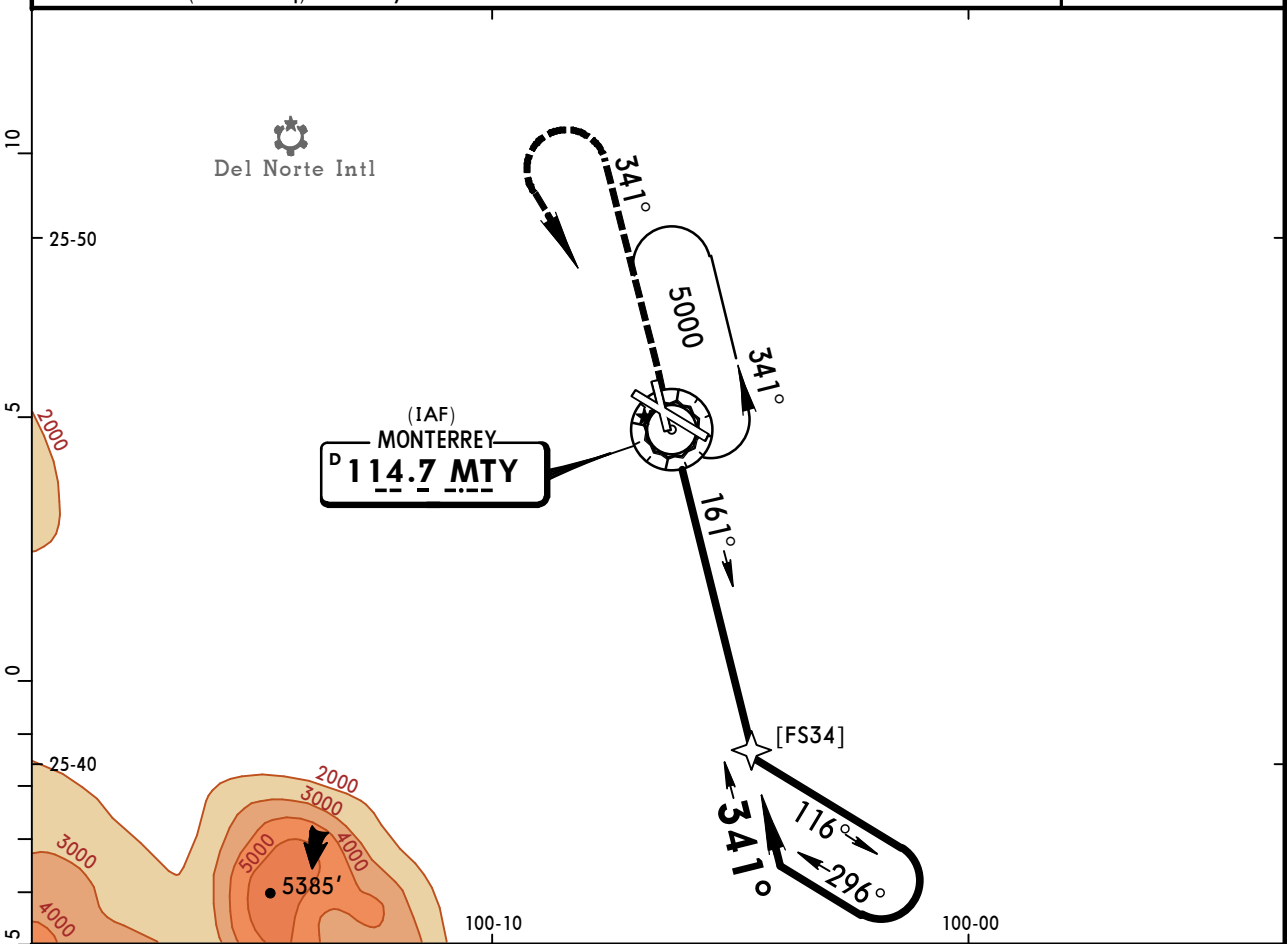
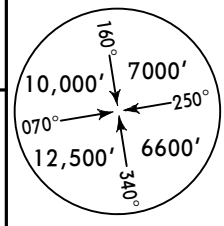
MMMY/MTY
GEN MARIANO ESCOBEDO INTL

8 SEP 17
Eff 14 Sep

JEPPESEN
13-9

MONTERREY, MEXICO
CAT A, B & C VOR Rwy 34

*ATIS 127.7	MONTERREY Approach (R) 119.75	MONTERREY Arrival 120.4	MONTERREY Tower 118.1	Ground 121.9			
VOR MTY 114.7	Final Apch Crs 341°	No FAF	MDA(H) (CONDITIONAL) 1760' (503')	Apt Elev 1276' Rwy 1257'			
MISSED APCH: Climb outbound on MTY VOR R-341, then turn LEFT within 10 NM to MTY VOR at the minimum holding altitude.							
Gnd speed-Kts	80	100	120	140	160	180	200
Max Outbound Distance	7.0	5:15	4:12	3:30	3:00	2:37	2:06
Alt Set: MB (IN on req)				Rwy Elev: 44 MB	Trans level: FL 195		Trans alt: 18500'



Gnd speed-Kts	70	90	100	120	140	160	↑ on MTY 114.7 R-341
Descent Angle 3.00°	372	478	531	637	743	849	
MAP at VOR							

STRAIGHT-IN LANDING RWY34			CIRCLE-TO-LAND	
MDA(H) 1760' (503')			MDA(H)	
DAY			Max Kts	
A	1		90	1820' (544') -1
B			120	
C	1½		140	1820' (544') -1½
D	NOT APPLICABLE		D	NOT APPLICABLE

Chart changes since cycle 21-2020

ADD = added chart, REV = revised chart, DEL = deleted chart.

ACT	PROCEDURE IDENT	INDEX	REV DATE	EFF DATE
-----	-----------------	-------	----------	----------

MONTERREY, (GEN MARIANO ESCOBEDO INTL - MMY)

TERMINAL CHART CHANGE NOTICES

No Chart Change Notices for Airport MMY