

List of pages in this Trip Kit

Trip Kit Index

Airport Information For LRBC

Terminal Charts For LRBC

Revision Letter For Cycle 16-2023

Change Notices

Notebook

General Information

Location: BACAU ROU
ICAO/IATA: LRBC / BCM
Lat/Long: N46° 31.32', E026° 54.62'
Elevation: 607 ft

Airport Use: Public
Daylight Savings: Observed
UTC Conversion: -2:00 = UTC
Magnetic Variation: 5.0° E

Fuel Types: Jet A-1
Customs: Yes
Airport Type: IFR
Landing Fee: Yes
Control Tower: Yes
Jet Start Unit: No
LLWS Alert: No
Beacon: No

Sunrise: 0409 Z
Sunset: 1556 Z

Runway Information

Runway: 16
Length x Width: 8202 ft x 148 ft
Surface Type: asphalt
TDZ-Elev: 607 ft
Lighting: Edge, ALS, Centerline, TDZ

Runway: 34
Length x Width: 8202 ft x 148 ft
Surface Type: asphalt
TDZ-Elev: 591 ft
Lighting: Edge, ALS, Centerline, TDZ

Communication Information

Bacau Tower: 120.980
Bacau Tower: 118.600 Secondary
Bacau Approach: 118.600 Secondary
Bacau Approach: 120.980

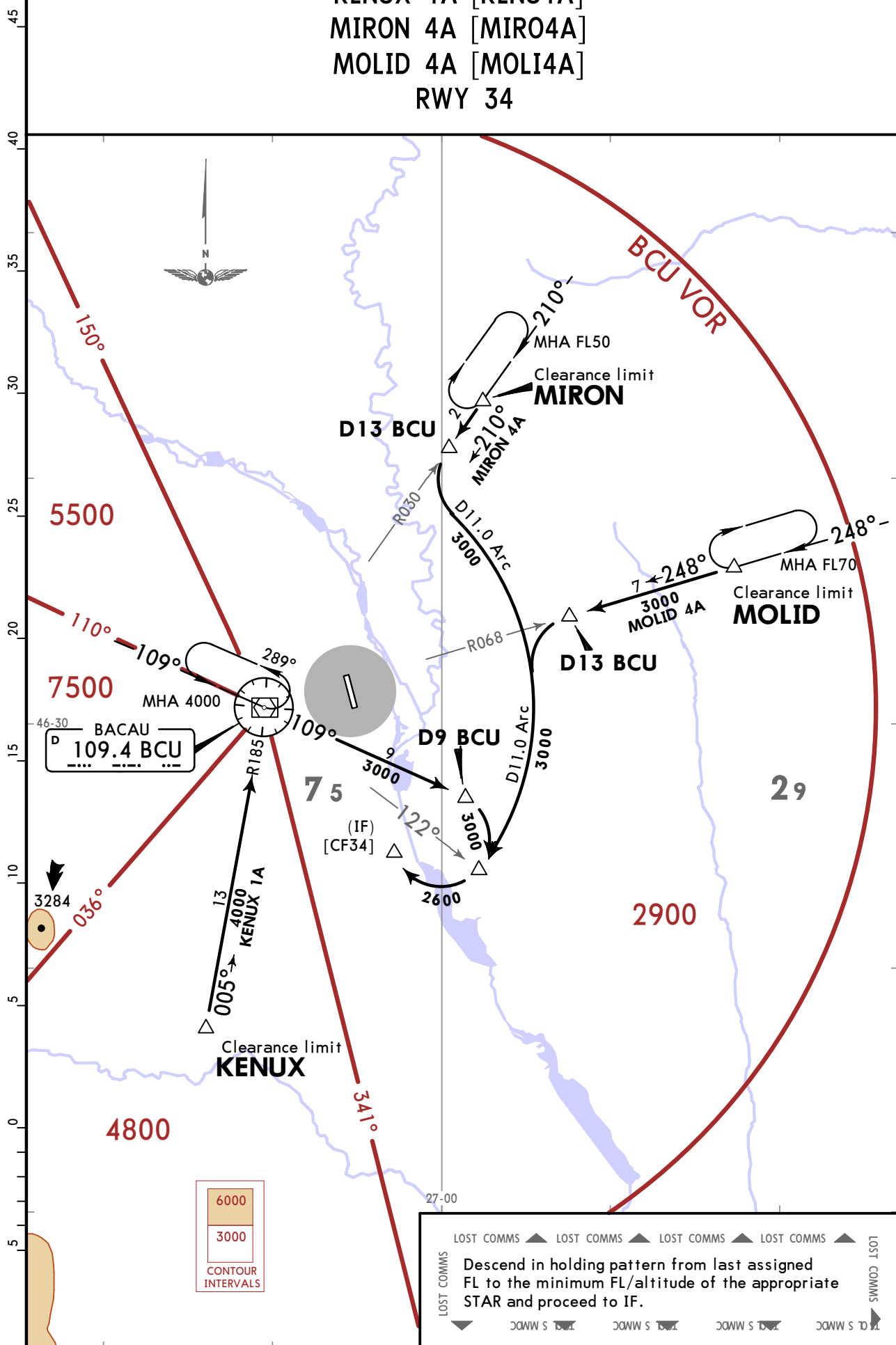
LRBC/BCM
GEORGE ENESCU

JEPPESEN
10 FEB 17 10-2

BACAU, ROMANIA
STAR

Apt Elev 607
Alt Set: hPa (MM on req) Trans level: By ATC

KENUX 1A [KENU1A]
MIRON 4A [MIRO4A]
MOLID 4A [MOLI4A]
RWY 34



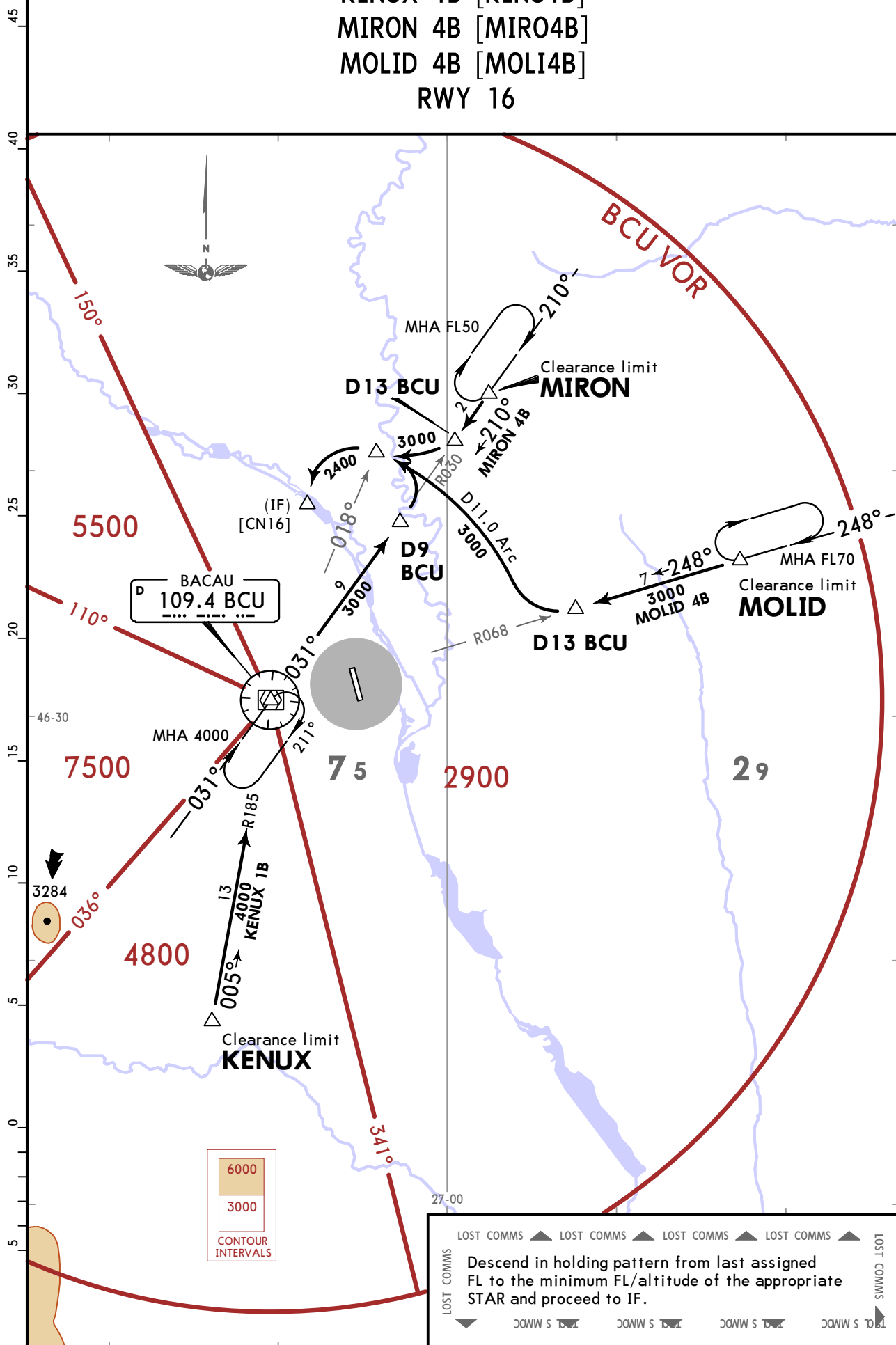
LRBC/BCM
GEORGE ENESCU

JEPPESEN
10 FEB 17 (10-2A)

BACAU, ROMANIA
STAR

Apt Elev 607
Alt Set: hPa (MM on req) Trans level: By ATC

KENUX 1B [KENU1B]
MIRON 4B [MIRO4B]
MOLID 4B [MOLI4B]
RWY 16



LRBC/BCM
GEORGE ENESCU

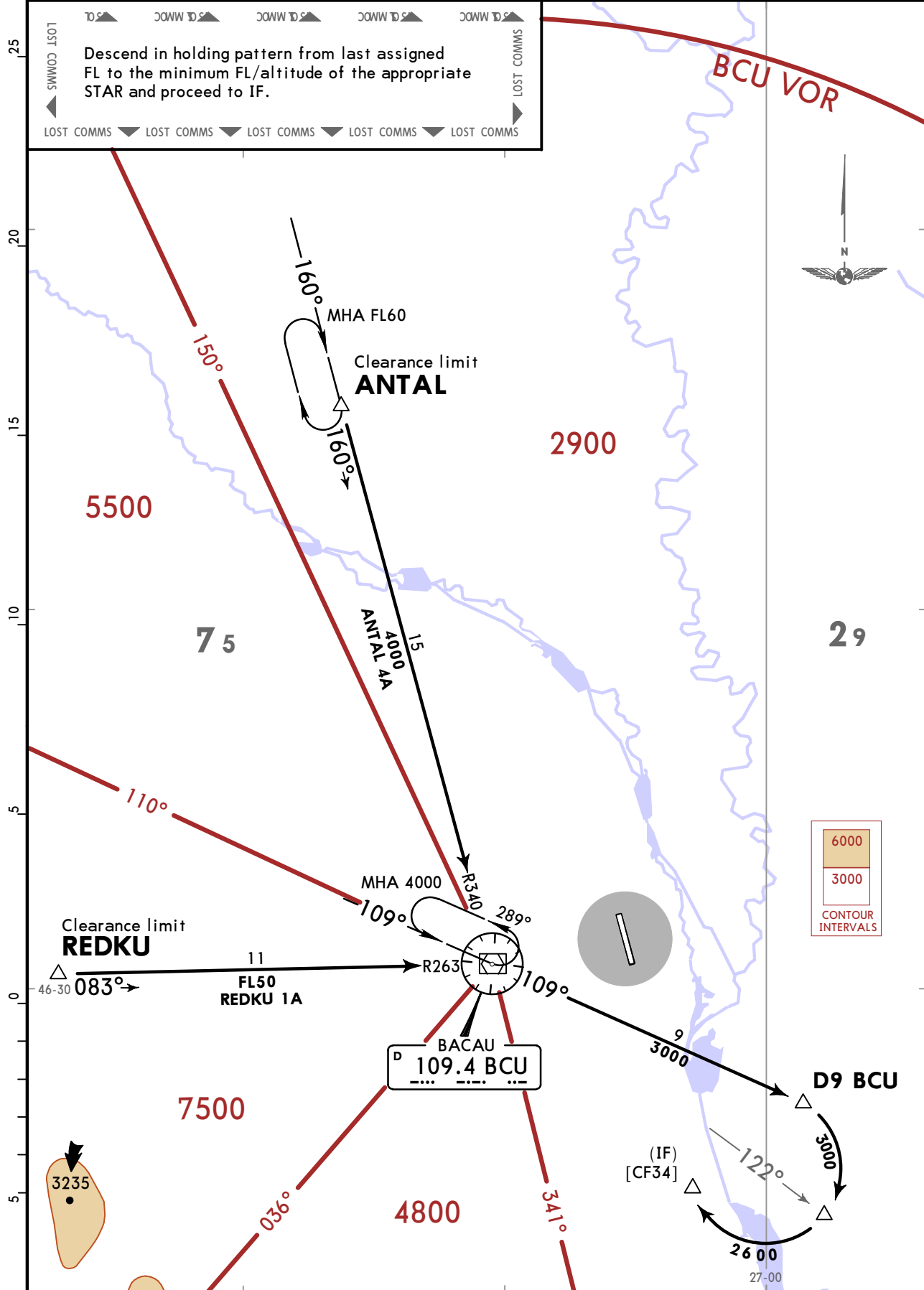
JEPPESEN
10 FEB 17 (10-2B)

BACAU, ROMANIA
STAR

Apt Elev 607
Alt Set: hPa (MM on req) Trans level: By ATC

ANTAL 4A [ANTA4A]
REDKU 1A [REDK1A]
RWY 34

Descend in holding pattern from last assigned FL to the minimum FL/altitude of the appropriate STAR and proceed to IF.



CHANGES: New format.

© JEPPESEN, 2017. ALL RIGHTS RESERVED.

LRBC/BCM
GEORGE ENESCU

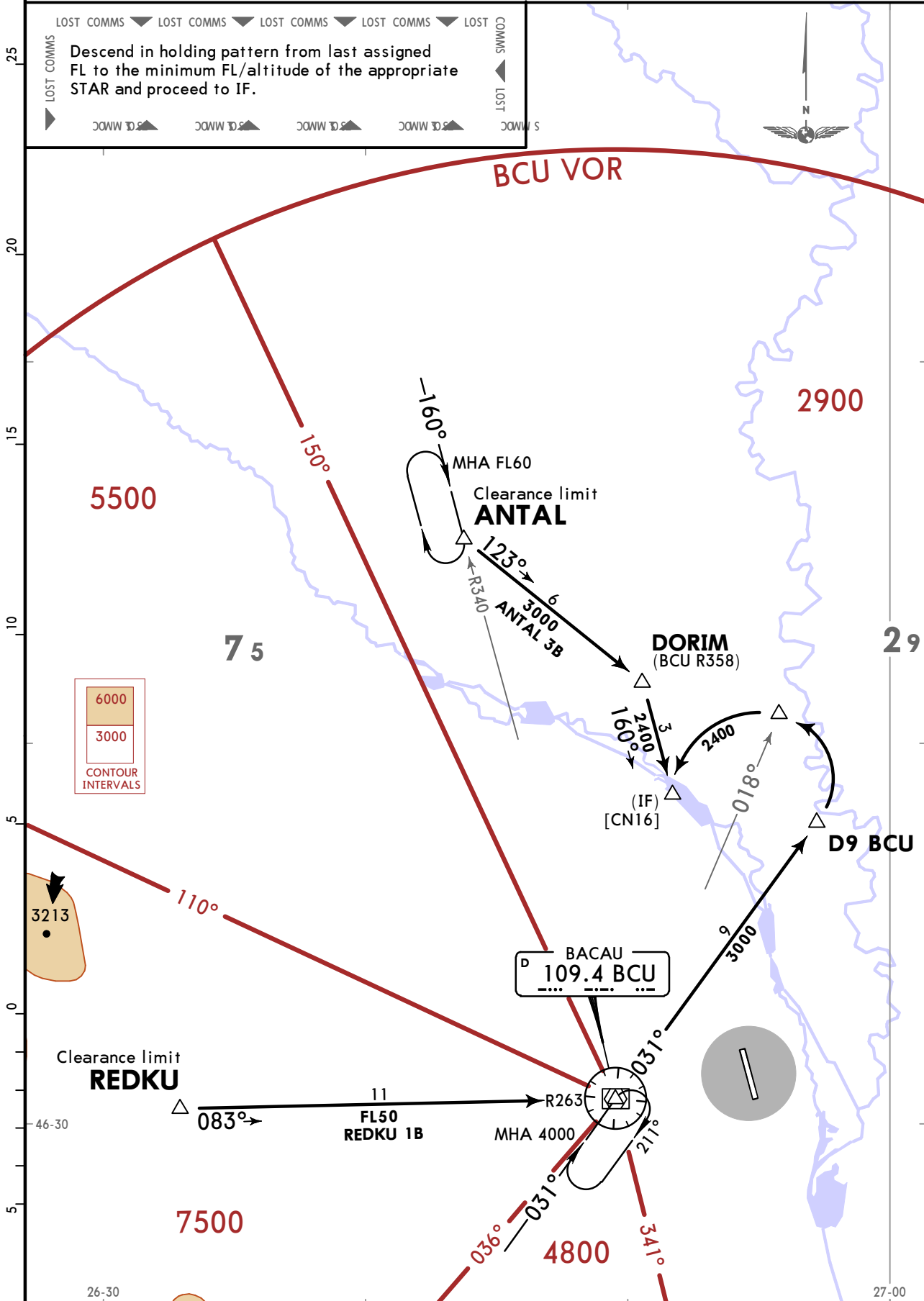
JEPPESEN
10 FEB 17 (10-2C)

BACAU, ROMANIA
STAR

Apt Elev
607
Alt Set: hPa (MM on req) Trans level: By ATC

ANTAL 3B [ANTA3B]
REDKU 1B [REDK1B]
RWY 16

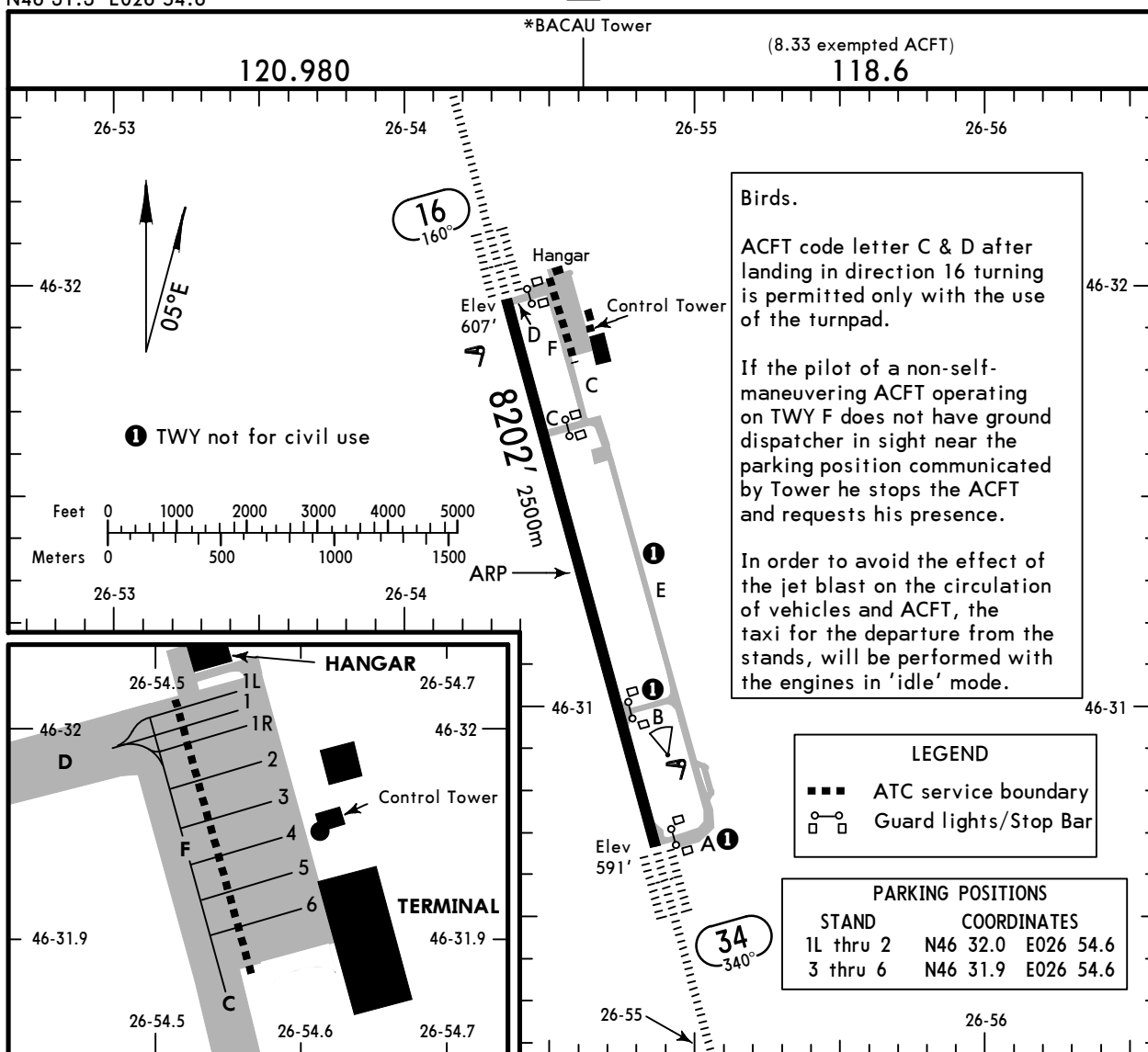
LOST COMMS
Descent in holding pattern from last assigned FL to the minimum FL/altitude of the appropriate STAR and proceed to IF.
LOST COMMS



LRBC/BCM
 Apt Elev **607'**
 N46 31.3 E026 54.6

JEPPESEN
 13 MAY 22 **(10-9)** Eff 19 May

BACAU, ROMANIA
 GEORGE ENESCU



ADDITIONAL RUNWAY INFORMATION

RWY	USABLE LENGTHS	LANDING BEYOND	TAKE-OFF	WIDTH
16 34	HIRL(60m) CL(15m) HIALS-II TDZ PAPI-L (3.0°) RVR	②		148' 45m
				7230' 2204m

② LDA 8182' 2494m

For ACFT Code letter A&B:

- Entry to the stand shall be made with guidance by the ground dispatcher;
- Exit from the stand without "push-back" if possible from the point of view of the maneuvering space, is performed only under the guidance of the ground dispatcher.

For ACFT Code letter C&D:

- Entry will be self-maneuvering. At request of the pilot or ground dispatcher instructions parking will be performed with guidance or assisted at the parking position by the ground dispatcher.
- Exit from stand is performed only with push-back or with it's own engines if push-back equipment is not operational and there is maneuvering space.

Starting of the engines will be performed at the signals of the ground dispatcher only.

Standard

TAKE-OFF

	Low Visibility Take-off			Day: RL & RCLM Night: RL or CL	Day: RL or RCLM Night: RL or CL	Adequate vis ref (Day only)
	HIRL, CL & relevant RVR	RL, CL & relevant RVR	RL & CL			
A						
B	TDZ, MID, RO	TDZ, MID, RO		RVR 300m	400m	500m
C	RVR 125m	RVR 150m	RVR 200m			
D						

NOISE ABATEMENT PROCEDURE

RWY 16: According to ICAO procedure NADP1 or NADP2.
 RWY 34: According to ICAO procedure NADP1.

STANDARD TAXI ROUTES

ARRIVAL RWY 16/34

Taxi Route	Apron	TWY to be followed	Low Visibility Operations
Arrival 1	Apron	D, F	NA
Arrival 2		C, F	

DEPARTURE RWY 16

Apron	Taxi Route	TWY to be followed	Low Visibility Operations
Apron	Departure 1	F, D	NA

DEPARTURE RWY 34

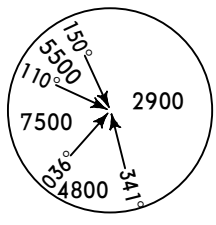
Apron	Departure 1	F, D	NA
	Departure 2	F, C	

LRBC/BCM
GEORGE ENESCU

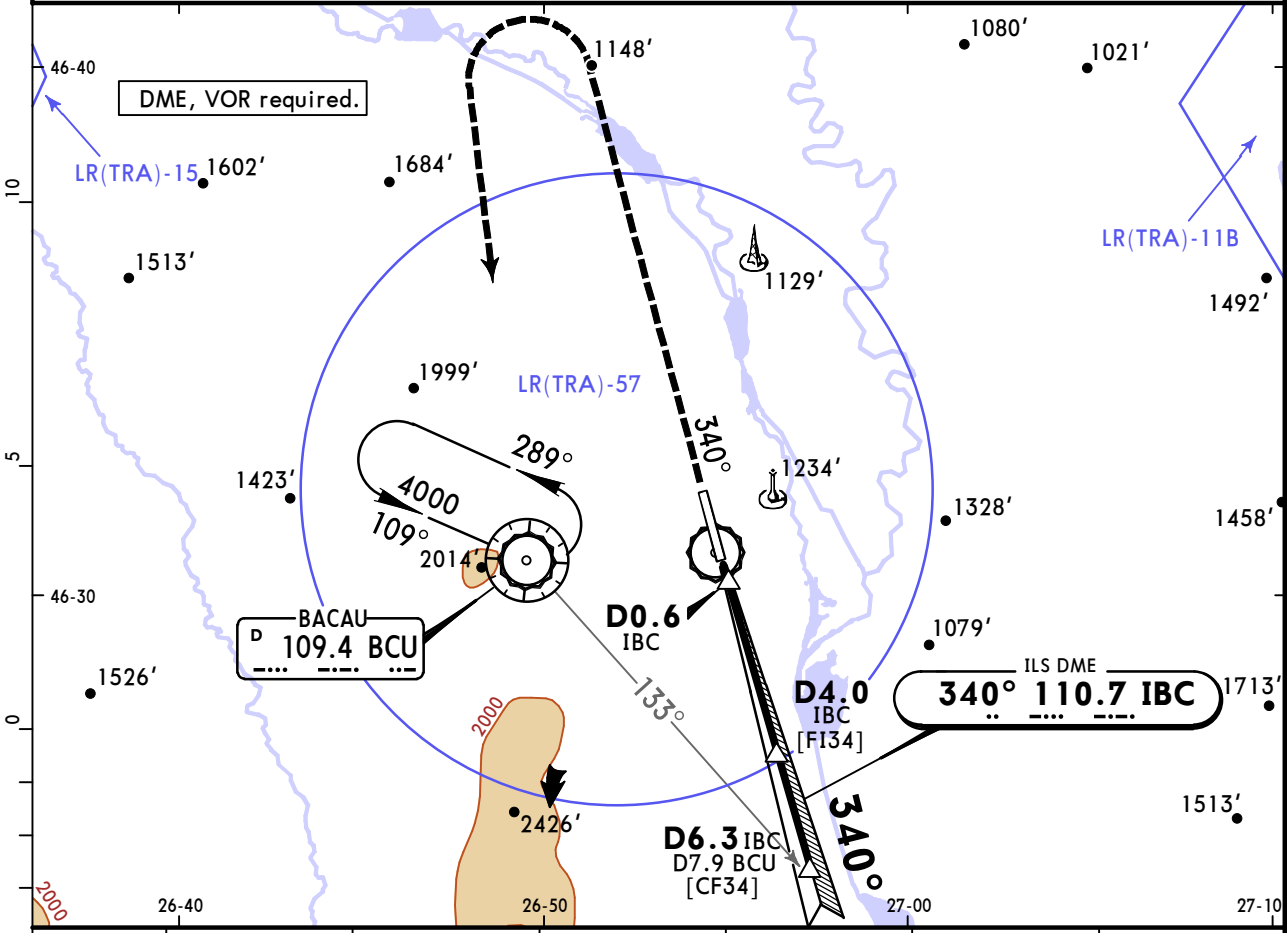
JEPPESEN
11 JUN 21 (11-1) Eff 17 Jun

BACAU, ROMANIA
ILS Rwy 34

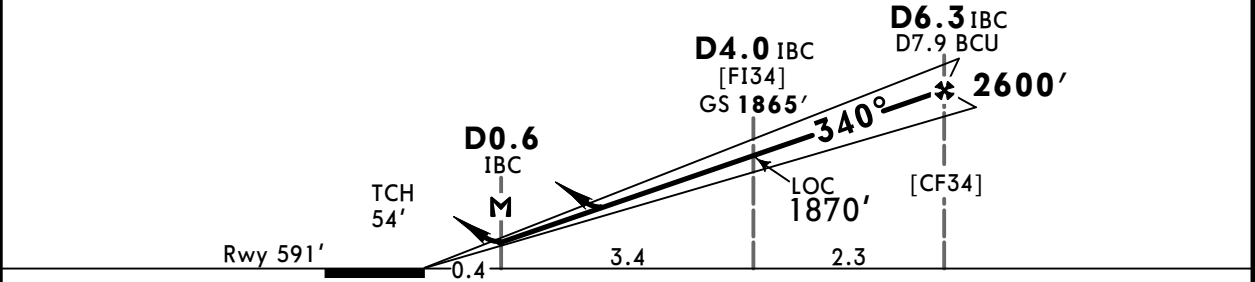
*BACAU Tower (APP/TWR)		(8.33 exempted ACFT)		
120.980		118.6		
LOC IBC	Final Apch Crs	D4.0 IBC	ILS DA(H)	Apt Elev 607'
110.7	340°	1865' (1274')	791' (200')	Rwy 591'
MISSED APCH: Climb STRAIGHT AHEAD on rwy track to 3400', then turn LEFT to VOR climbing to 4000' and hold, or as directed.				MSA BCU VOR



Alt Set: hPa(MM on req) Rwy Elev: 21 hPa Trans level: By ATC Trans alt: 4000'



LOC (GS out)	IBC DME ALTITUDE	1.0	2.0	3.0	4.0	5.0
		910'	1230'	1550'	1870'	2190'



Gnd speed-Kts	70	90	100	120	140	160	HIALS-II PAPI 3400' on track 4000' LT BCU 109.4
ILS GS or LOC Descent Angle	3.00°	372	478	531	637	743	
MAP at D0.6 IBC							
D6.3 IBC to MAP	5.7	4:53	3:48	3:25	2:51	2:27	

Standard					CIRCLE-TO-LAND		
STRAIGHT-IN LANDING RWY 34				LOC (GS out) 2			
ILS DA(H) 791' (200')		LOC (GS out) 2		DA/MDA(H) 920' (329')			
FULL	TDZ or CL out	ALS out	ALS out	ALS out	Max Kts	MDA(H)	VIS
A					100	1630' (1023')	1500m
B					135	1630' (1023')	1600m
C	RVR 550m	RVR 550m 1	RVR 1200m	RVR 800m	180	2640' (2033')	2400m
D				RVR 1500m	205	2820' (2213')	3600m

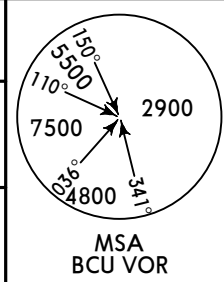
1 RVR 750m when a Flight Director or Autopilot or HUD to DA is not used. 2 CDFA
 CHANGES: Printing sequence. © JEPPESEN, 2007, 2021. ALL RIGHTS RESERVED.

LRBC/BCM
GEORGE ENESCU

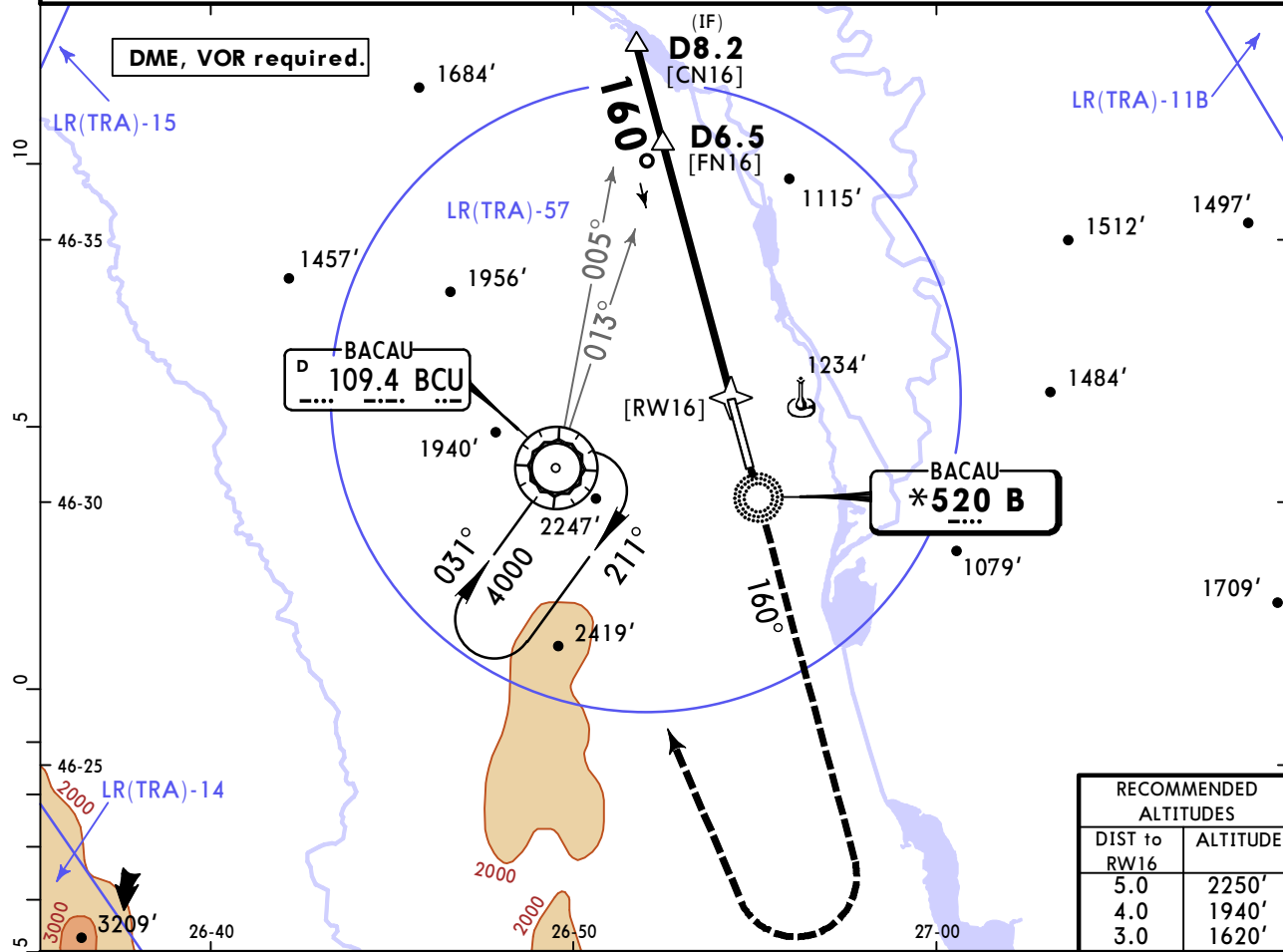
JEPPESSEN
28 AUG 20 **(16-1)** Eff 10 Sep

BACAU, ROMANIA
NDB Rwy 16

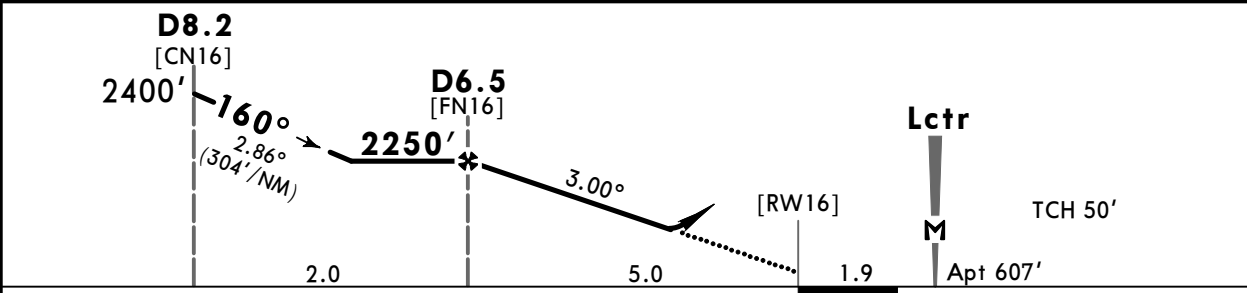
*BACAU Tower (APP/TWR)		(8.33 exempted ACFT)	
120.980		118.6	
Lctr B *520	Final Apch Crs 160°	D6.5 2250' (1643')	DA/MDA(H) 1360' (753') Apt Elev 607'
MISSED APCH: Climb STRAIGHT AHEAD on rwy track to 3400', then turn RIGHT to VOR climbing to 4000' and hold, or as directed.			
			MSA BCU VOR



Alt Set: hPa Apt Elev: 22 hPa Trans level: By ATC Trans alt: 4000'



RECOMMENDED ALTITUDES	
DIST to RW16	ALTITUDE
5.0	2250'
4.0	1940'
3.0	1620'



Gnd speed-Kts	70	90	100	120	140	160	HIALS PAPI	3400' ↑ on track	Rwy track	4000' RT	BCU 109.4
Descent Angle	3.00°	372	478	531	637	743					
MAP at Lctr											
D6.5 to MAP	6.9	5:55	4:36	4:08	3:27	2:57	2:35				

Standard STRAIGHT-IN LANDING RWY 16		CIRCLE-TO-LAND	
CDFA			
DA/MDA(H) 1360' (753')			
		ALS out	
A	RVR 1500m		Max Kts
B			100
C	RVR 2400m		MDA(H)
D			135
		VIS	1500m
		180	1630' (1023')
		205	1630' (1023')
		205	2640' (2033')
		205	2820' (2213')
		205	3600m

PANS OPS

LRBC/BCM
GEORGE ENESCU

JEPPESSEN
28 AUG 20 **(16-2)** Eff 10 Sep

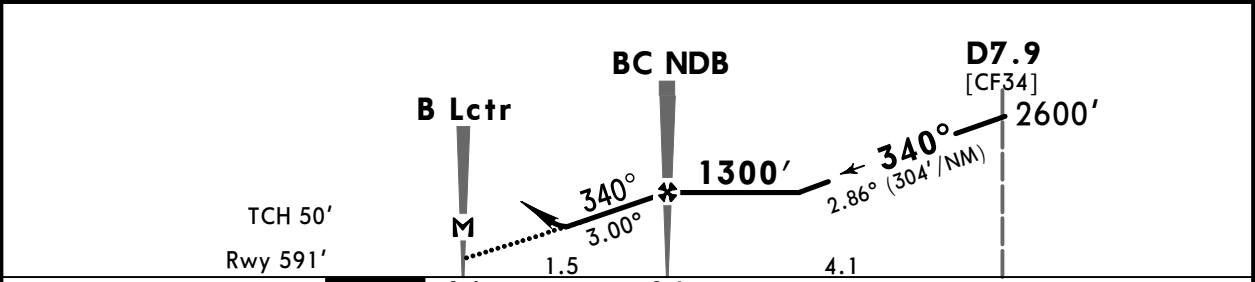
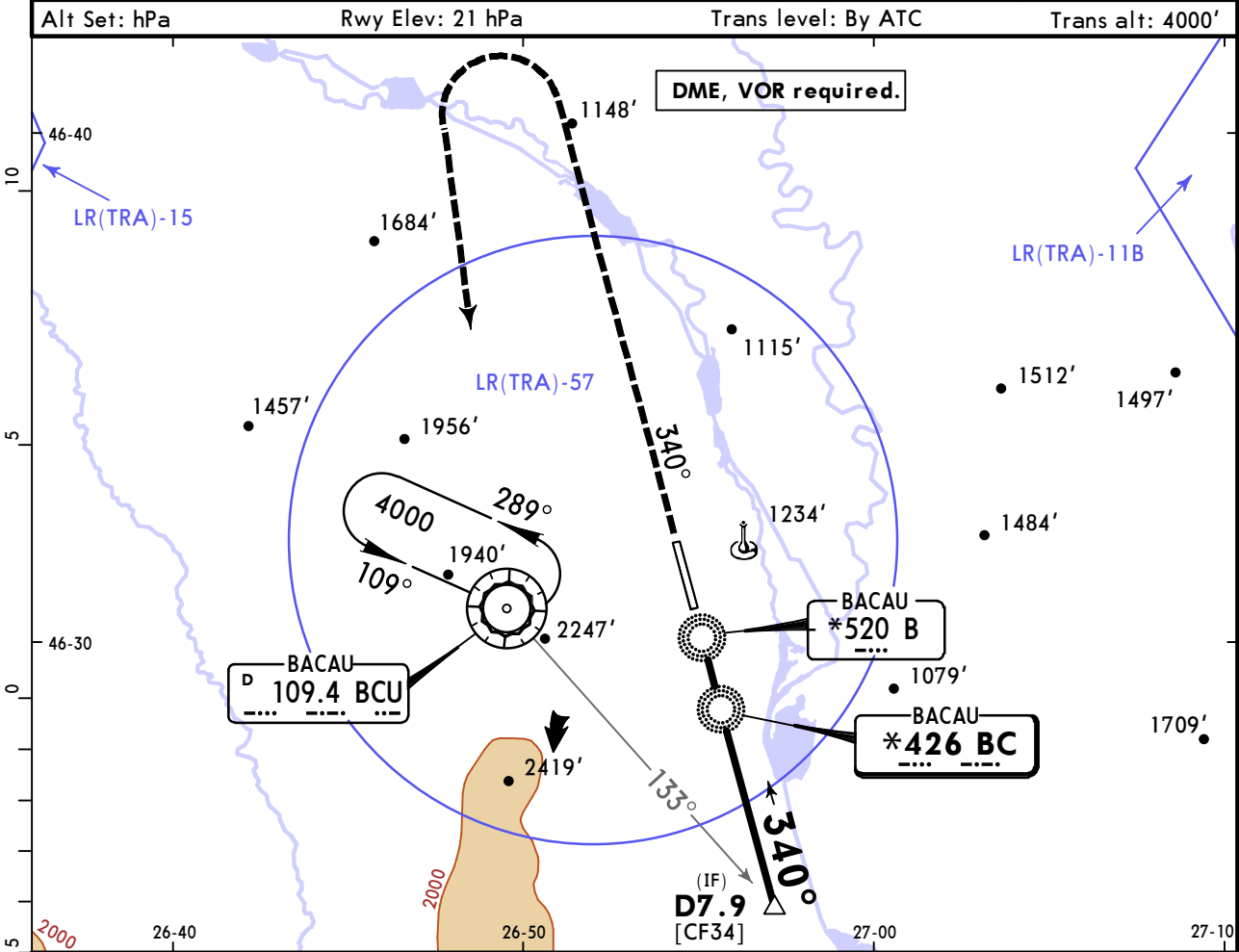
BACAU, ROMANIA
NDB Rwy 34

*BACAU Tower (APP/TWR) (8.33 exempted ACFT)

120.980		118.6		
NDB BC *426	Final Apch Crs 340°	BC NDB 1300' (709')	DA/MDA(H) 1200' (609')	Apt Elev 607' Rwy 591'

MISSED APCH: Climb STRAIGHT AHEAD on rwy track to 3400', then turn LEFT to VOR climbing to 4000' and hold, or as directed.

MSA
BCU VOR



Gnd speed-Kts	70	90	100	120	140	160	HIALS PAPI	3400'	Rwy track	4000'	BCU 109.4
Descent Angle	3.00°	372	478	531	637	849		↑	←	←	
MAP at B Lctr											
BC NDB to MAP	1.5	1:17	1:00	0:54	0:45	0:39					

PANS OPS	Standard STRAIGHT-IN LANDING RWY 34				CIRCLE-TO-LAND					
	CDFA				Max Kts					
	DA/MDA(H) 1200' (609')				ALS out		MDA(H)		VIS	
	A				100	1630' (1023')		2800m		
	B				135	2640' (2033')		2800m		
C	RVR 2100m				180	2820' (2213')		3600m		
D				205						

CHANGES: Approach lights symbol.

Chart changes since cycle 15-2023

ADD = added chart, REV = revised chart, DEL = deleted chart.

ACT	PROCEDURE IDENT	INDEX	REV DATE	EFF DATE
-----	-----------------	-------	----------	----------

BACAU, (GEORGE ENESCU - LRBC)

TERMINAL CHART CHANGE NOTICES

No Chart Change Notices for Airport LRBC