

List of pages in this Trip Kit

Trip Kit Index

Airport Information For LRBM

Terminal Charts For LRBM

Revision Letter For Cycle 16-2023

Change Notices

Notebook

General Information

Location: BAIA MARE ROU
ICAO/IATA: LRBM / BAY
Lat/Long: N47° 39.50', E023° 27.97'
Elevation: 606 ft

Airport Use: Public
Daylight Savings: Observed
UTC Conversion: -2:00 = UTC
Magnetic Variation: 6.0° E

Fuel Types: Jet A-1
Customs: Yes
Airport Type: IFR
Landing Fee: Yes
Control Tower: Yes
Jet Start Unit: No
LLWS Alert: No
Beacon: No

Sunrise: 0423 Z
Sunset: 1610 Z

Runway Information

Runway: 09
Length x Width: 7054 ft x 148 ft
Surface Type: asphalt
TDZ-Elev: 581 ft
Lighting: Edge, ALS, Centerline, TDZ

Runway: 27
Length x Width: 7054 ft x 148 ft
Surface Type: asphalt
TDZ-Elev: 606 ft
Lighting: Edge, Centerline

Communication Information

Satu Mare Tower: 119.655
Baia Mare Tower: 118.855
Satu Mare Tower: 118.800 Secondary
Baia Mare Tower: 118.100 Secondary
Bucharest Radar/Control ACC: 124.100 Secondary RCO
Bucharest Radar/Control ACC: 130.230 RCO

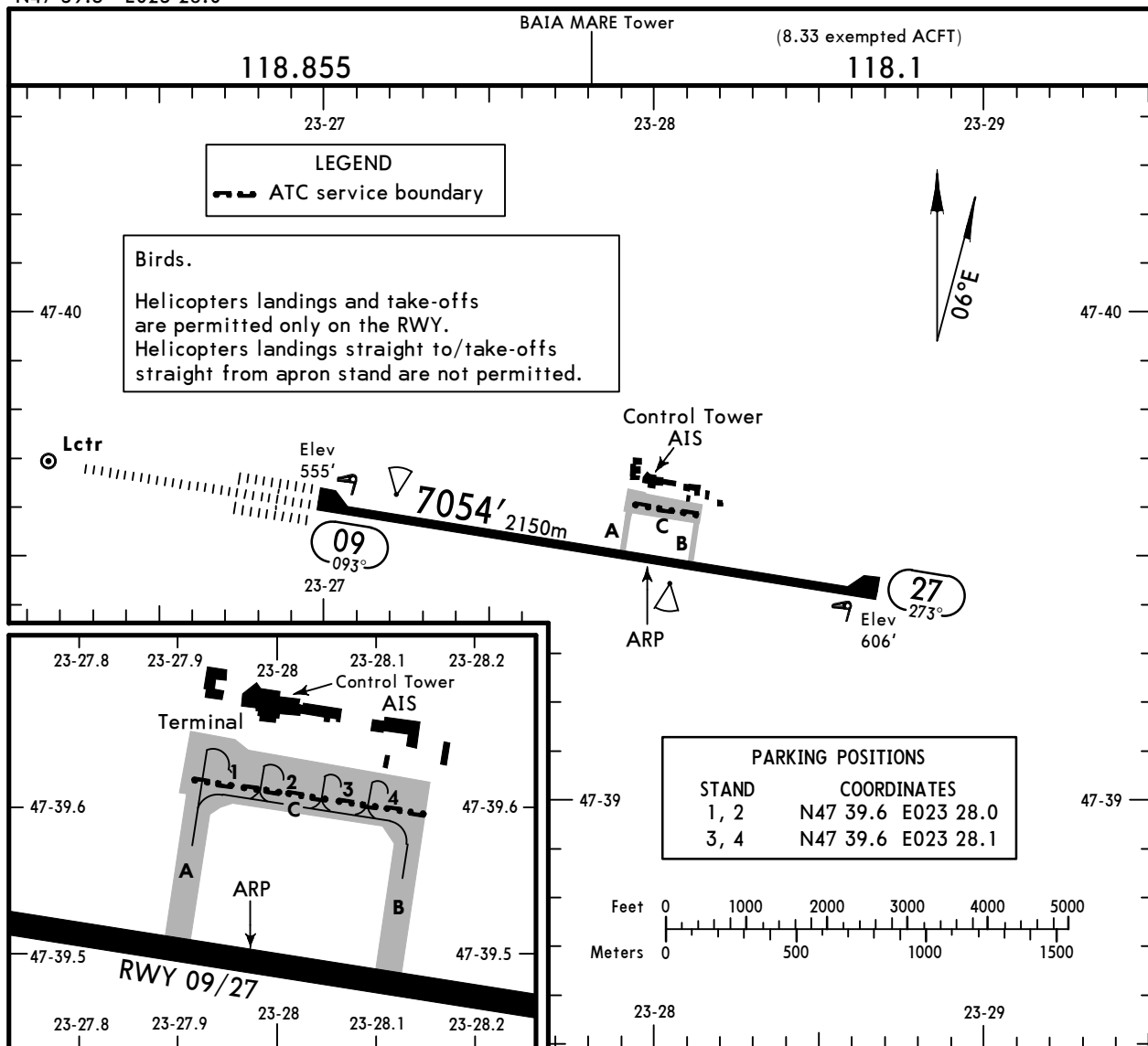
LRBM/BAY

Apt Elev **606'**
N47 39.5 E023 28.0

JEPPESEN 5 MAY 23 **(10-9) Eff 18 May**

BAIA MARE, ROMANIA

MARAMURES



ADDITIONAL RUNWAY INFORMATION

RWY						USABLE LENGTHS		TAKE-OFF	WIDTH
						LANDING BEYOND			
	HIRL (60m)	CL (15m)	HIALS-II	TDZ	PAPI-L ①	RVR	Threshold	Glide Slope	
09								6143' 1872m	
27									148' 45m

① (angle 3.0°)

Std/State		TAKE-OFF						
HIRL & CL (spacing 15m or less) & relevant RVR	RL & CL & relevant RVR	RL & CL	RL & RCLM		RL or RCLM		Adequate Vis Ref	
			DAY	NIGHT	DAY	NIGHT	DAY	NIGHT
TDZ R125m Mid R125m Rollout R125m	TDZ R150m Mid R150m Rollout R150m	R200m	R300m		R400m		R/V500m	NA

Std/State

TAKE-OFF

HIRL & CL (spacing 15m or less) & relevant RVR	RL & CL & relevant RVR	RL & CL	RL & RCLM		RL or RCLM		Adequate Vis Ref	
			DAY	NIGHT	DAY	NIGHT	DAY	NIGHT
TDZ R125m Mid R125m Rollout R125m	TDZ R150m Mid R150m Rollout R150m	R200m	R300m		R400m		R/V500m	NA

LOW VISIBILITY PROCEDURES (LVP)**Criteria for the initiation and termination of LVP**

The preparation phase will be commenced when RVR is 800m (horizontal visibility 1500m) or cloud base/vertical visibility is 500' and CAT II operations are expected.

The operations phase will be commenced for:

a) Approach and landing, when the RVR falls below 550m (horizontal visibility falls below 800m) or cloud base/vertical visibility is 200' or less.

b) Take-off - LVTO, when RVR falls below 400m.

LVP will be terminated when RVR is greater than 800m (horizontal visibility is 1500m or higher) and cloud base/vertical visibility is greater than 300' and a continuing improvement of these conditions is anticipated.

Ground movement restrictions

Pilots shall report "OUT OF RUNWAY CAT II HOLDING POSITION" only after ACFT passed the green/yellow coded TWY centre line lights section of TWYs A and B.

All ACFT movements on taxiways to/from RWY 09/27 shall be carried out on Standard Taxi-Routes, with cockpit over the center line.

Upon receiving taxi clearance, ACFT shall proceed only when green centre line path is illuminated.

During LVP, taxiing is restricted to one ACFT movement at a time.

It is strictly prohibited to cross a Stop Bar alignment which has the red lights turned on.

Approach and Landing in CAT II conditions

Pilots will be informed by RTF when LVP are in operation.

ATC will apply a proper spacing between ACFT so that ACFT being on final approach should be at least 9NM distance to TDZ (RWY 09), when the preceding ACFT, in landing sequence, landed.

ACFT movements on apron surface are monitored by Marshalls and, on pilots request, they provide marshalling guidance.

All ATC instructions shall be confirmed through READ BACK method.

In uncommon case when a pilot have any doubt as to its exact position on the movement area in low visibility conditions, a LEADER CAR vehicle is provided on pilots request for guiding the ACFT to the designated parking position on the apron.

Caution: It is prohibited to establish minima and perform CAT II operations with ACFT whose performance does not allow the 4% climb gradient to be reached during the missed approach procedure.

LRBM/BAY MARAMURES

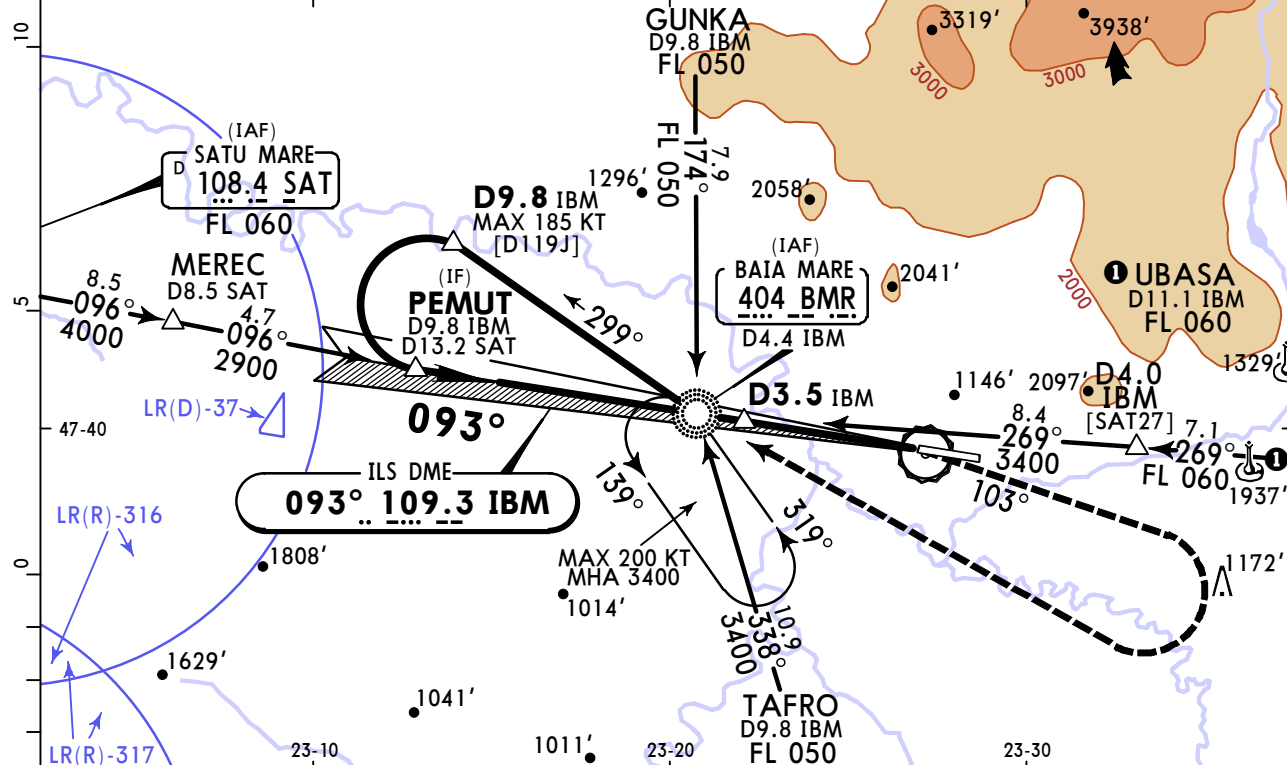
JEPPESSEN
 2 JUL 21
Eff 15 Jul (11-1)

BAIA MARE, ROMANIA CAT C & D ILS Z Rwy 09

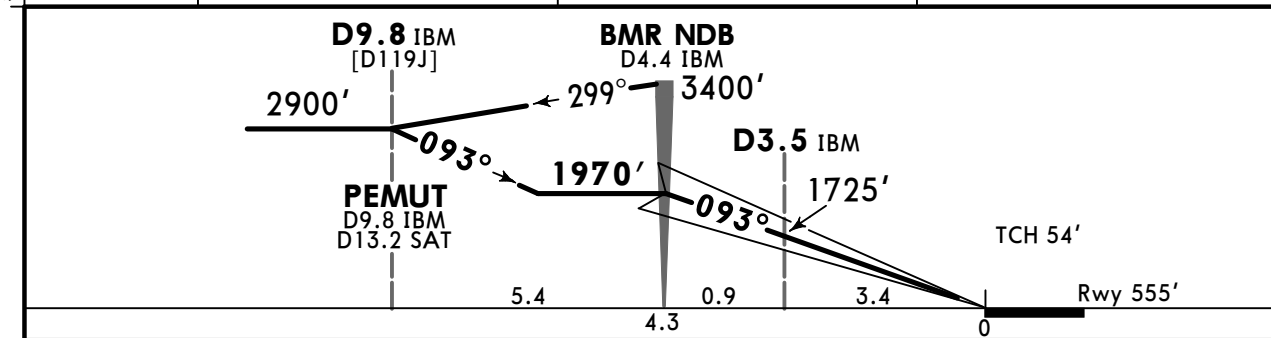
BUCHAREST Control (R)	BAIA MARE Tower (8.33 exempted ACFT)	*SATU MARE Tower (8.33 exempted ACFT)		
130.230	118.855	118.1	119.655	118.8
LOC IBM	Final Apch Crs	BMR NDB	ILS DA(H) Refer to Minimums	Apt Elev 606' Rwy 555'
109.3	093°	1970' (1415')		

MISSED APCH: Climb STRAIGHT AHEAD to 1160', then turn RIGHT on course 103° to 2200', then turn RIGHT (MAX 200 KT) to BMR NDB climbing to 3400' and hold.
 Refer to minimums for missed apch climb gradient.

Alt Set: hPa (MM on req) Rwy Elev: 20 hPa Trans level: By ATC Trans alt: 4000'
 1. VOR, DME and ADF required. 2. BMR NDB must be serviceable. 3. SAT VOR must be serviceable for SAT arrivals only. 4. WARNING: High terrain North East of apt.



DIST to IBM DME	4.0	3.0	2.0
ALTITUDE	1835'	1517'	1198'



Gnd speed-Kts	70	90	100	120	140	160		1160'	2200'	on 103° RT
GS	3.00°	372	478	531	637	743		849		

Std/State		STRAIGHT-IN LANDING				CIRCLE-TO-LAND		
		Missed apch climb gradient mim 4.0%		Missed apch climb gradient mim 3.0%		Missed apch climb gradient mim 2.5%		Not authorized North of airport
		DA(H) C: 780' (225') D: 790' (235')		DA(H) C: 1010' (455') D: 1020' (465')		DA(H) C: 1150' (595') D: 1160' (605')		
FULL	TDZ or CL out	ALS out	FULL/TDZ or CL out	ALS out	FULL/TDZ or CL out	ALS out	Max Kts	MDA(H)

A	NOT APPLICABLE						A	NOT APPLICABLE
B	NOT APPLICABLE						B	NOT APPLICABLE
C	R550m	R550m	R1200m	R1400m	R2100m	R2000m	R2400m	180 1620' (1014') V2400m
D	NOT APPLICABLE						D	NOT APPLICABLE

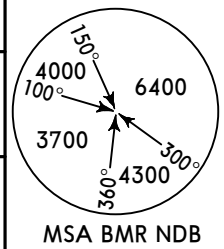
CHANGES: Airspaces added. New AOM concept. © JEPPESSEN, 2019, 2021. ALL RIGHTS RESERVED.

LRBM/BAY MARAMURES

2 JUL 21
Eff 15 Jul (11-1A) CAT C & D

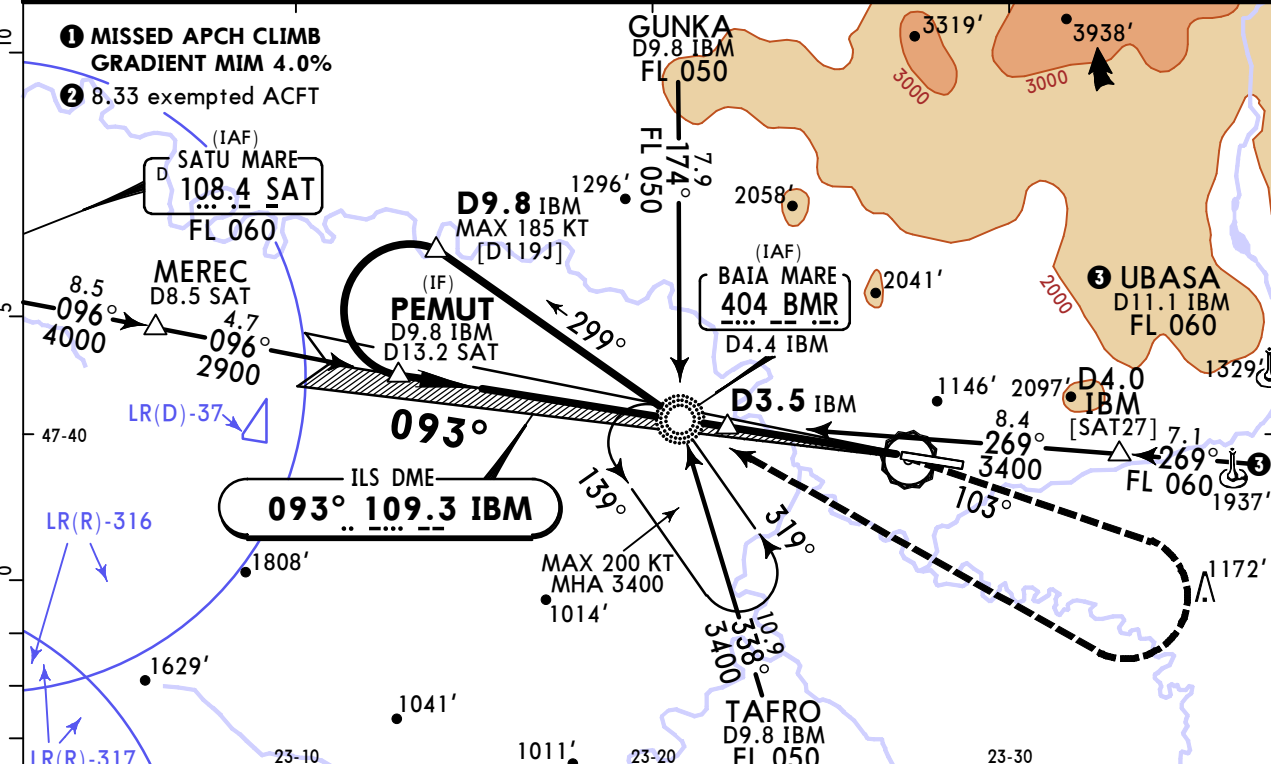
BAIA MARE, ROMANIA
CAT II ILS Z Rwy 09

BUCHAREST Control (R) 130.230		BAIA MARE Tower 118.855		*SATU MARE Tower 118.10		119.655		118.80	
LOC IBM 109.3	Final Apch Crs 093°	BMR NDB 1970' (1415')		CAT II ILS DA(H) Refer to Minimums		Apt Elev 606'	Rwy 555'		

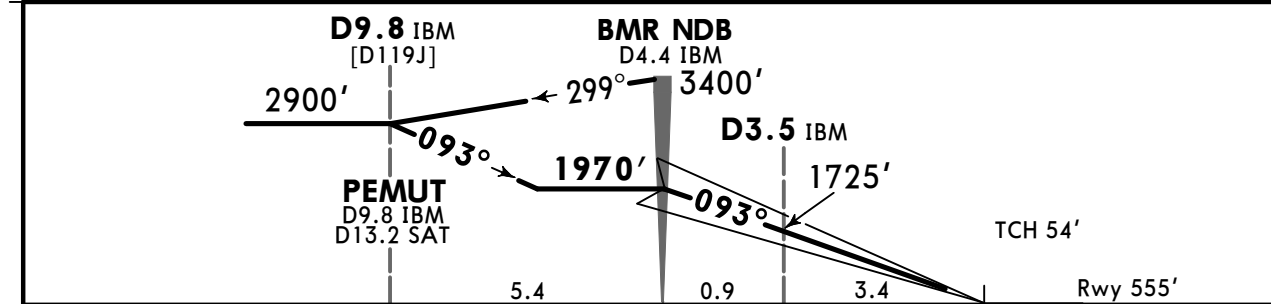


Alt Set: hPa (MM on req) Rwy Elev: 20 hPa Trans level: By ATC Trans alt: 4000'

1. VOR, DME and ADF required. 2. Special Aircrew and ACFT Certification Required.
 3. BMR NDB must be serviceable. 4. SAT VOR must be serviceable for SAT arrivals only.
 5. WARNING: High terrain North East of apt.



DIST to IBM DME	4.0	3.0	2.0
ALTITUDE	1835'	1517'	1198'



Gnd speed-Kts	70	90	100	120	140	160	HIALS-II PAPI	1160'	2200'	on 103°
GS	3.00°	372	478	531	637	743				

Std/State		STRAIGHT-IN LANDING CAT II ILS	
C	RA 159'	D	RA 170'
DA(H)	700' (145')	DA(H)	710' (155')

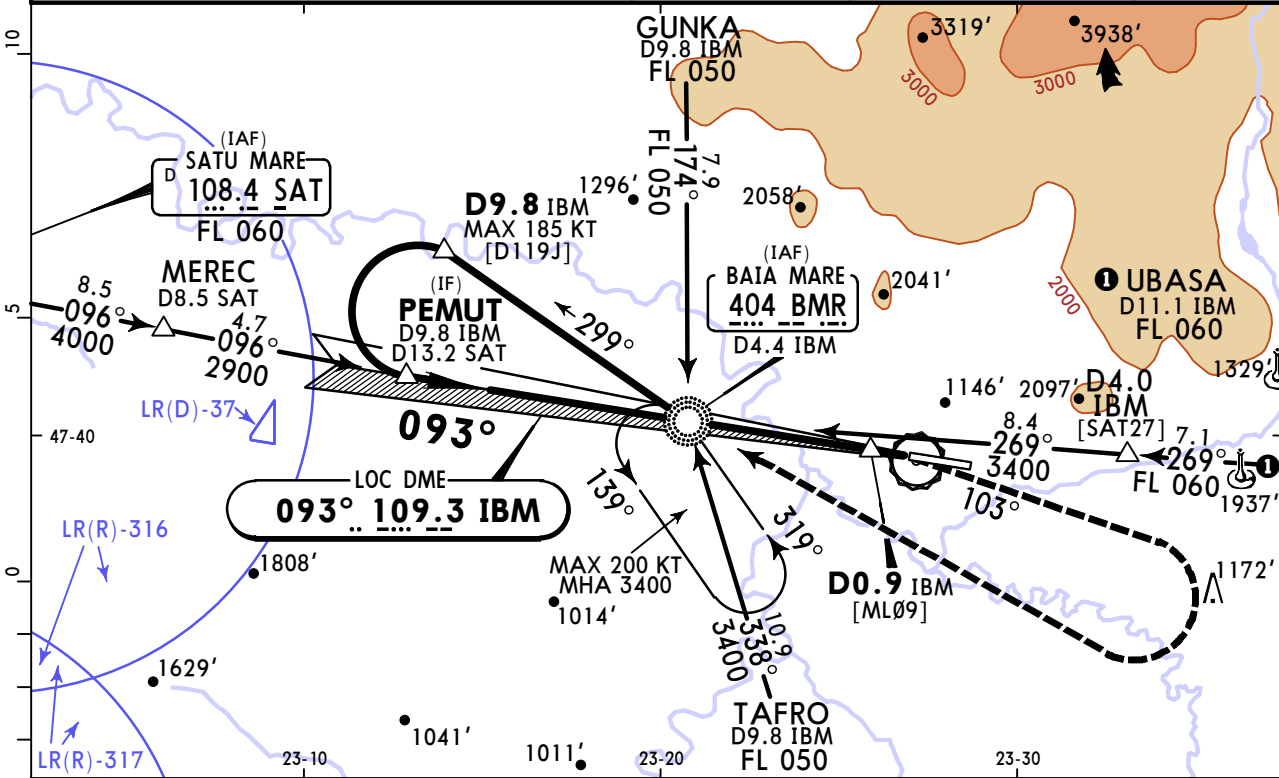
R450m

LRBM/BAY MARAMURES

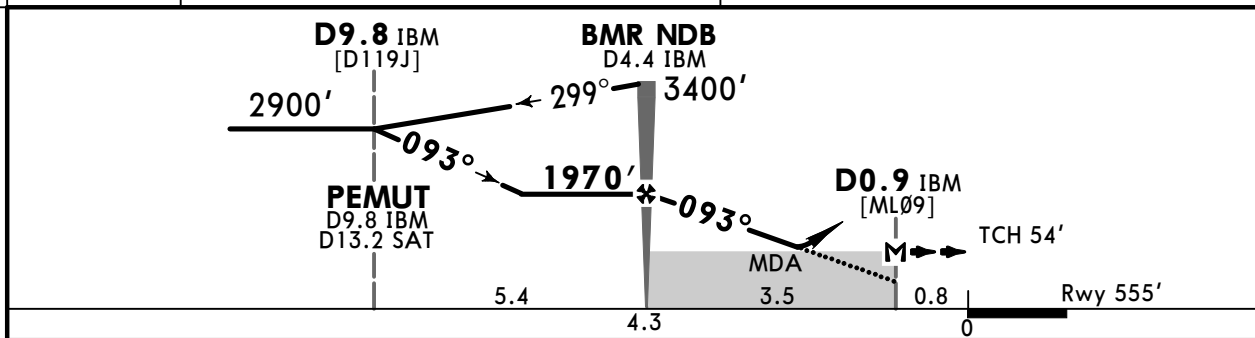
JEPPESSEN
2 JUL 21
Eff 15 Jul (11-2)

BAIA MARE, ROMANIA CAT C & D LOC Z Rwy 09

BRIEFING STRIP™	BUCHAREST Control (R)	BAIA MARE Tower (8.33 exempted ACFT)	*SATU MARE Tower (8.33 exempted ACFT)	
	130.230	118.855	118.1	
LOC IBM	Final Apch Crs	BMR NDB	DA/MDA(H)	Apt Elev
109.3	093°	1970' (1415')	Refer to Minimums	606'
MISSED APCH: Climb on course 103° to 2200', then turn RIGHT (MAX 200 KT) to BMR NDB climbing to 3400' and hold. Refer to minimums for missed apch climb gradient.				Rwy 555'
Alt Set: hPa (MM on req)		Rwy Elev: 20 hPa	Trans level: By ATC	Trans alt: 4000'
1. VOR, DME and ADF required. 2. BMR NDB must be serviceable. 3. SAT VOR must be serviceable for SAT arrivals only. 4. WARNING: High terrain North East of apt.				



DIST to IBM DME	4.0	3.0
ALTITUDE	1830'	1512'



Gnd speed-Kts	70	90	100	120	140	160	HIALS-II PAPI 2200' on 103°
Descent Angle	3.00°	372	478	531	637	743	
MAP at D0.9 IBM							
BMR NDB to MAP	3.5	3:00	2:20	1:45	1:30	1:19	

Std/State	STRAIGHT-IN LANDING			CIRCLE-TO-LAND
Missed apch climb gradient mim 4.0% CDFA	Missed apch climb gradient mim 3.0% CDFA	Missed apch climb gradient mim 2.5% CDFA	Not authorized North of airport	
DA/MDA(H) 1010' (455')	DA/MDA(H) C: 1020' (465') D: 1050' (495')	DA/MDA(H) C: 1200' (645') D: 1220' (665')		
ALS out	ALS out	ALS out	Max Kts MDA(H)	

A	NOT APPLICABLE						A	NOT APPLICABLE
B	NOT APPLICABLE						B	NOT APPLICABLE
C	R1400m	R2100m	R1500m	R2200m	R2300m	R2400m	180 1620' (1014') V2400m	
D				R2300m	R2400m		D NOT APPLICABLE	

☑ VNAV DA(H) in lieu of MDA(H) depends on operator policy.
 CHANGES: Airspaces added. Timing added. New AOM concept. © JEPPESSEN, 2019, 2021. ALL RIGHTS RESERVED.

LRBM/BAY MARAMURES

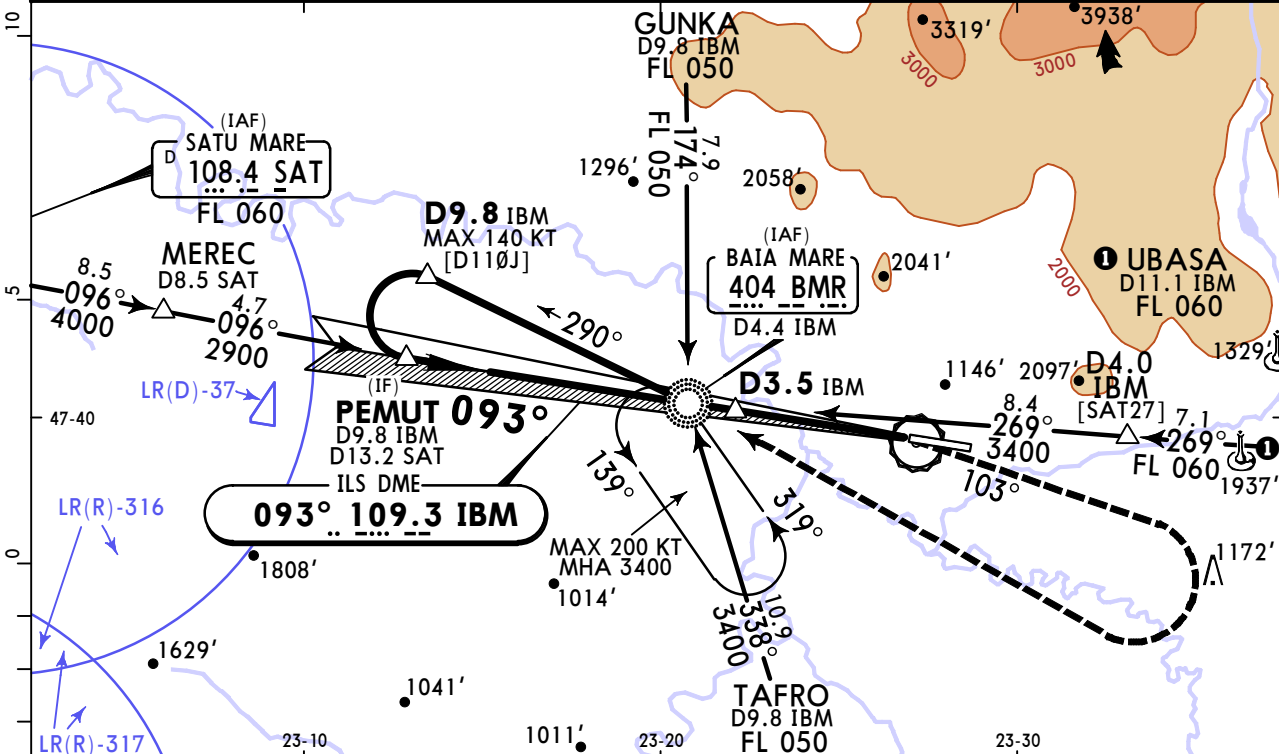
JEPPesen
2 JUL 21
Eff 15 Jul **(11-3)**

BAIA MARE, ROMANIA CAT A & B ILS Y Rwy 09

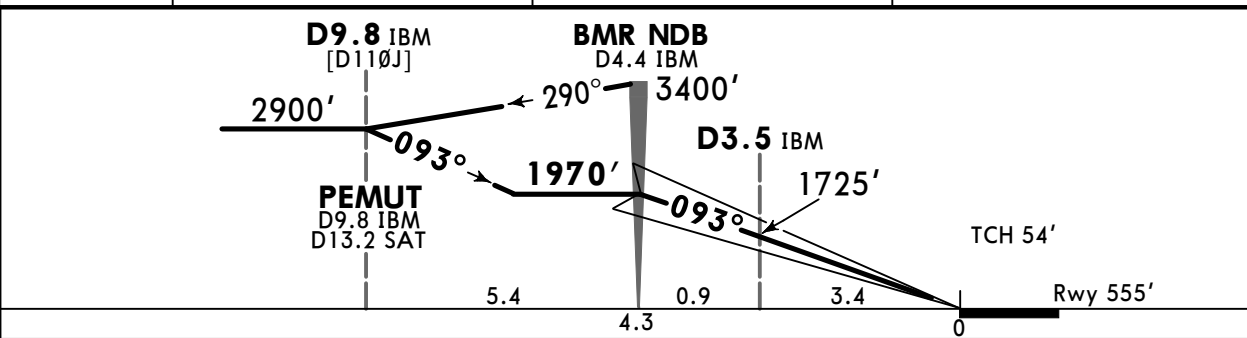
BUCHAREST Control (R) 130.230		BAIA MARE Tower (8.33 exempted ACFT) 118.855		*SATU MARE Tower (8.33 exempted ACFT) 118.1		119.655		118.8	
LOC IBM 109.3	Final Apch Crs 093°	BMR NDB 1970' (1415')		ILS DA(H) Refer to Minimums		Apt Elev 606' Rwy 555'			

MISSED APCH: Climb STRAIGHT AHEAD to 1160', then turn RIGHT on course 103° to 2200', then turn RIGHT (MAX 200 KT) to BMR NDB climbing to 3400' and hold.
Refer to minimums for missed apch climb gradient.

Alt Set: hPa (MM on req) Rwy Elev: 20 hPa Trans level: By ATC Trans alt: 4000'
1. VOR, DME and ADF required. 2. BMR NDB must be serviceable. 3. SAT VOR must be serviceable for SAT arrivals only. 4. WARNING: High terrain North East of apt.



DIST to IBM DME	4.0	3.0	2.0
ALTITUDE	1835'	1517'	1198'



Gnd speed-Kts	70	90	100	120	140	160		1160' ↑ 2200' RT on 103°
GS	3.00°	372	478	531	637	743		

Std/State	STRAIGHT-IN LANDING						CIRCLE-TO-LAND	
	FULL		ALS out		ALS out		Max Kts	MDA(H)
A	R550m	R550m	R1200m	R1300m	R1500m	R1500m	100	1170' (564') 2 V1500m
B	R550m	R550m	R1200m	R1400m	R1500m	R1500m	135	1350' (744') V1600m
C	NOT APPLICABLE						C	NOT APPLICABLE
D	NOT APPLICABLE						D	NOT APPLICABLE

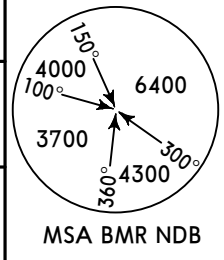
1R750m when a Flight Director or Autopilot or HUD to DA is not used. **2** or higher straight-in minimums.
CHANGES: Airspaces added. New AOM concept. © JEPPesen, 2019, 2021. ALL RIGHTS RESERVED.

LRBM/BAY MARAMURES

JEPPESEN
 2 JUL 21
Eff 15 Jul **(11-3A)** **CAT A & B**

BAIA MARE, ROMANIA
CAT II ILS Y Rwy 09

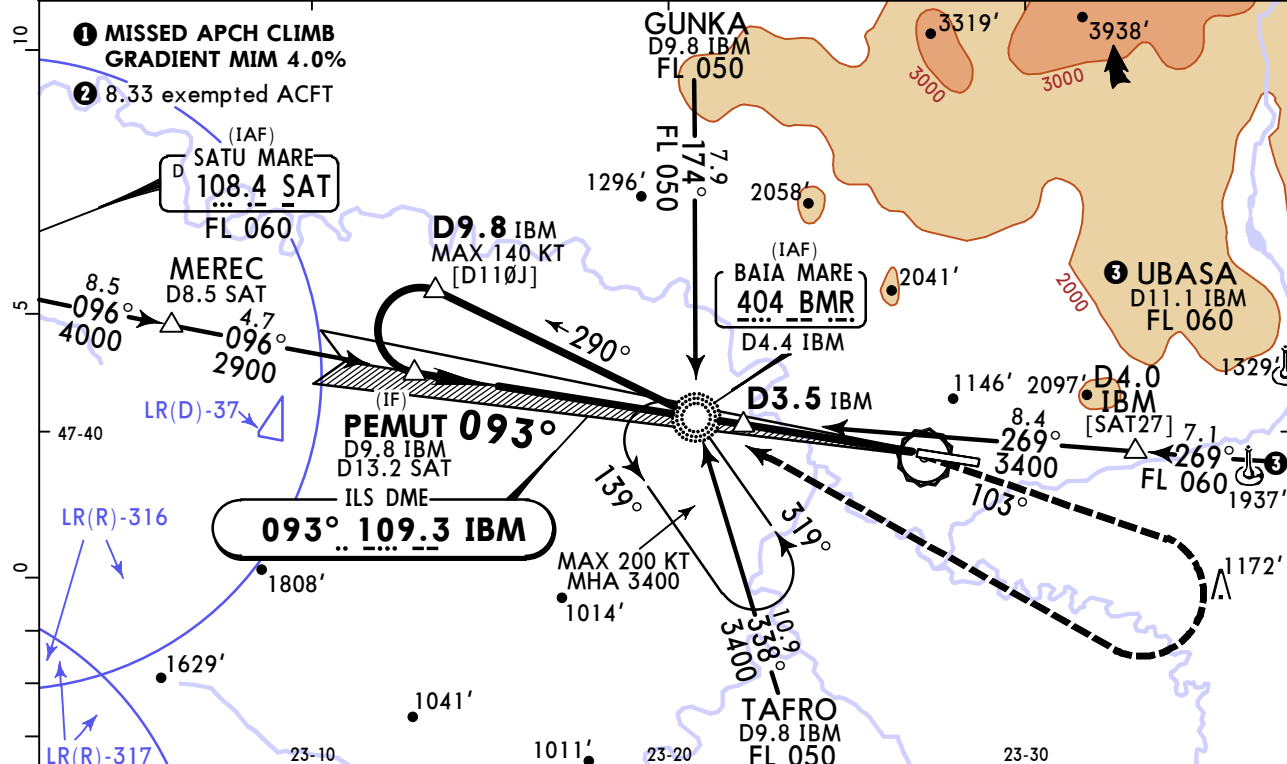
BUCHAREST Control (R) 130.230		BAIA MARE Tower 118.855		*SATU MARE Tower 118.10		119.655		118.80	
LOC IBM 109.3	Final Apch Crs 093°	BMR NDB 1970' (1415')		CAT II ILS DA(H) Refer to Minimums		Apt Elev 606'		Rwy 555'	



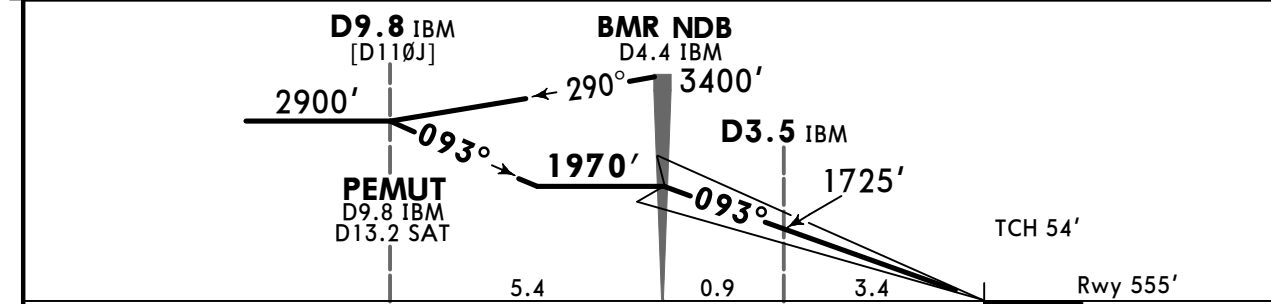
MISSED APCH: Climb STRAIGHT AHEAD to 1160', then turn RIGHT on course 103° to 2200', then turn RIGHT (MAX 200 KT) to BMR NDB climbing to 3400' and hold.
 Missed apch climb gradient mim 4.0%.

Alt Set: hPa (MM on req) Rwy Elev: 20 hPa Trans level: By ATC Trans alt: 4000'

1. VOR, DME and ADF required. 2. Special Aircrew and ACFT Certification Required.
 3. BMR NDB must be serviceable. 4. SAT VOR must be serviceable for SAT arrivals only.
 5. WARNING: High terrain North East of apt.



DIST to IBM DME	4.0	3.0	2.0
ALTITUDE	1835'	1517'	1198'



Gnd speed-Kts	70	90	100	120	140	160	HIALS-II PAPI	1160'	2200'	on 103°
Gs	3.00°	372	478	531	637	743				

Std/State		STRAIGHT-IN LANDING CAT II ILS	
A RA 127' DA(H) 670' (115')		B RA 146' DA(H) 690' (135')	
R300m		R400m	

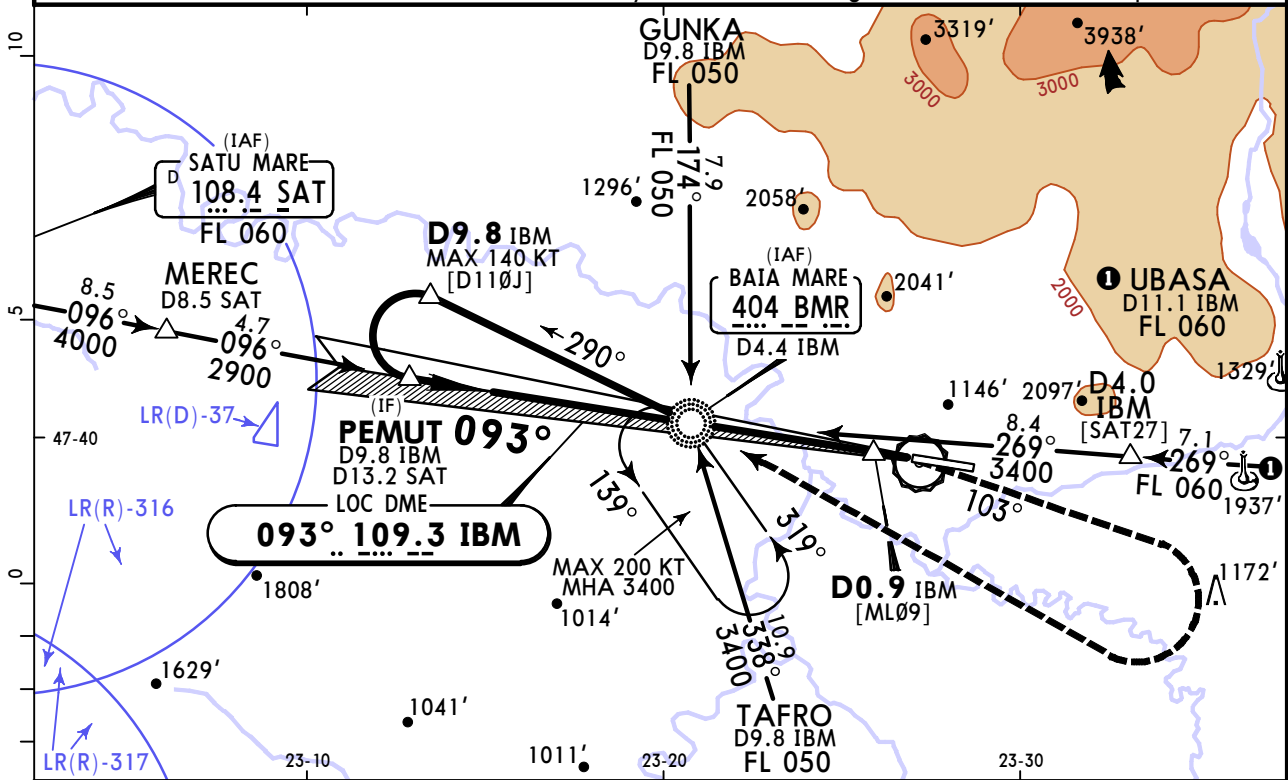
LRBM/BAY MARAMURES

JEPPESSEN
2 JUL 21
Eff 15 Jul 11-4

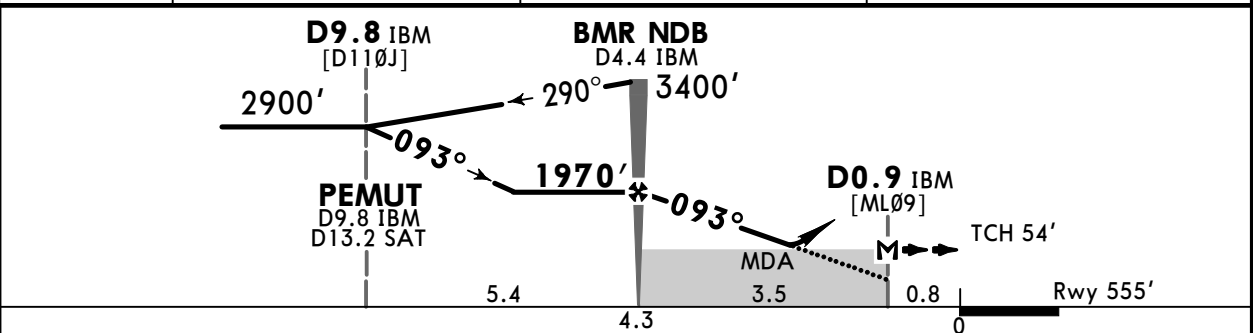
BAIA MARE, ROMANIA
CAT A & B LOC Y Rwy 09

BRIEFING STRIP™	BUCHAREST Control (R)	BAIA MARE Tower (8.33 exempted ACFT)	*SATU MARE Tower (8.33 exempted ACFT)		
	130.230	118.855	118.1	119.655	
	LOC IBM 109.3	Final Apch Crs 093°	BMR NDB 1970'(1415')	DA/MDA(H) Refer to Minimums	Apt Elev 606' Rwy 555'
MISSED APCH: Climb on course 103° to 2200', then turn RIGHT (MAX 200 KT) to BMR NDB climbing to 3400' and hold. Refer to minimums for missed apch climb gradient.					

Alt Set: hPa (MM on req) Rwy Elev: 20 hPa Trans level: By ATC Trans alt: 4000'
 1. VOR, DME and ADF required. 2. BMR NDB must be serviceable.
 3. SAT VOR must be serviceable for SAT arrivals only. 4. WARNING: High terrain North East of apt.



DIST to IBM DME	4.0	3.0	2.0
ALTITUDE	1830'	1512'	1193'



Gnd speed-Kts	70	90	100	120	140	160	HIALS-II PAPI 2200' on 103°
Descent Angle	3.00°	372	478	531	637	743	
MAP at D0.9 IBM							
BMR NDB to MAP	3.5	3:00	2:20	2:06	1:45	1:30	1:19

Std/State	STRAIGHT-IN LANDING				CIRCLE-TO-LAND	
	Missed apch climb gradient mim 4.0% CDFA DA/MDA(H) 1010'(455')		Missed apch climb gradient mim 3.0% CDFA DA/MDA(H) 1010'(455')		Missed apch climb gradient mim 2.5% CDFA DA/MDA(H) A:1150'(595') B:1180'(625')	
A	ALS out	ALS out	ALS out	ALS out	Max Kts	MDA(H)
B	R1400m	R1500m	R1400m	R1500m	100	1170'(564') V1500m
C					135	1350'(744') V1600m
D	NOT APPLICABLE				C	NOT APPLICABLE
					D	NOT APPLICABLE

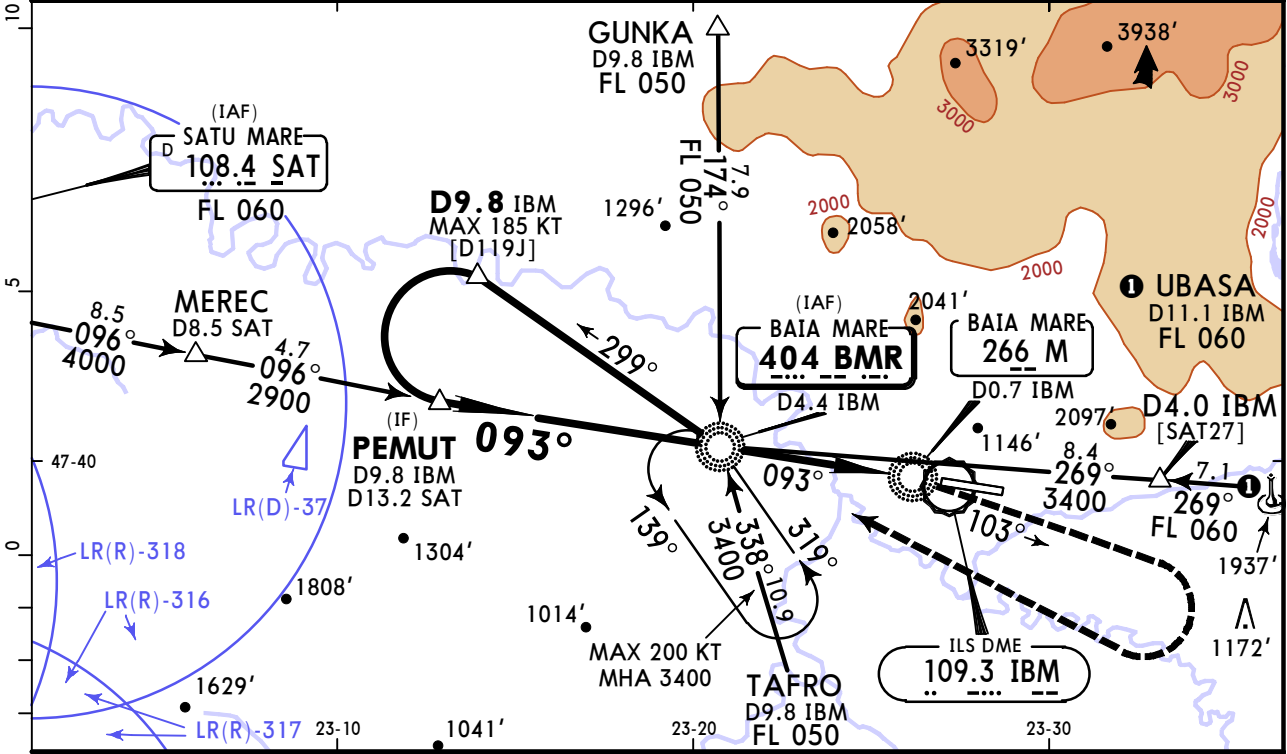
LRBM/BAY MARAMURES

2 JUL 21
Eff 15 Jul (16-1)

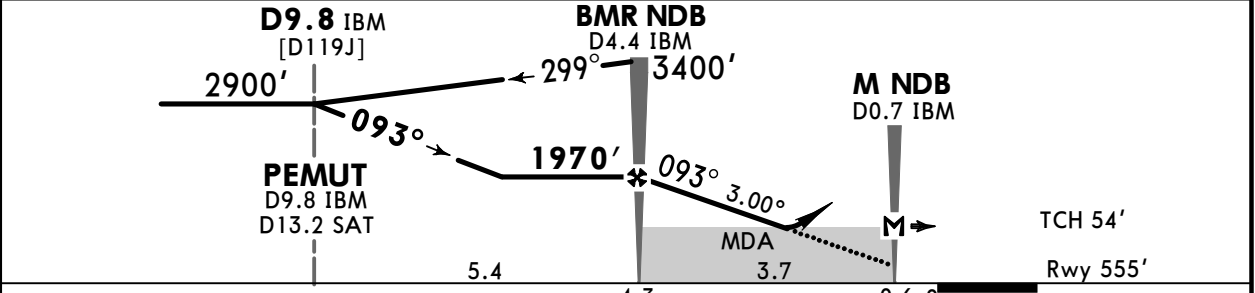
CAT C & D

BAIA MARE, ROMANIA NDB Z Rwy 09

BRIEFING STRIP™	BUCHAREST Control (R)	BAIA MARE Tower <small>(8.33 exempted ACFT)</small>		*SATU MARE Tower <small>(8.33 exempted ACFT)</small>		<p>MSA BMR NDB</p>
	130.230	118.855	118.1	119.655	118.8	
	NDB BMR 404	Final Apch Crs 093°	BMR NDB 1970' (1415')	DA/MDA(H) Refer to Minimums	Apt Elev 606' Rwy 555'	
MISSED APCH: Climb on track 103° to 2200', then turn RIGHT (MAX 200 KT) to BMR NDB, climbing to 3400' and hold. Refer to minimums for missed apch climb gradient.						
Alt Set: hPa (MM on req)		Rwy Elev: 20 hPa		Trans level: By ATC		Trans alt: 4000'
1. VOR and DME required. 2. IBM DME, BMR NDB and M NDB must be serviceable. 3. SAT VOR must be serviceable for SAT arrivals only. 4. WARNING: High terrain North East of apt.						



DIST. TO IBM DME	4.0	3.0
ALTITUDE	1830'	1512'



Gnd speed-Kts	70	90	100	120	140	160	HIALS-II PAPI 2200' on 103°
Descent Angle	3.00°	372	478	531	637	743	
MAP at M NDB							
BMR NDB to MAP	3.7	3:10	2:28	2:13	1:51	1:35	

Timing not authorized for defining the MAP.

Std/State	STRAIGHT-IN LANDING			CIRCLE-TO-LAND Not authorized North of airport
	Missed apch climb gradient mim 4.0% CDFA	Missed apch climb gradient mim 3.0% CDFA	Missed apch climb gradient mim 2.5% CDFA	
1 DA/ C: 1190' (635') MDA(H) D: 1220' (665')	1 DA/ C: 1200' (645') MDA(H) D: 1230' (675')	1 DA/ C: 1210' (655') MDA(H) D: 1230' (675')	Max Kts MDA(H)	
ALS out	ALS out	ALS out		
A	NOT APPLICABLE	NOT APPLICABLE	NOT APPLICABLE	NOT APPLICABLE
B	NOT APPLICABLE	NOT APPLICABLE	NOT APPLICABLE	NOT APPLICABLE
C	R2200m R2400m	R2300m R2400m	R2300m R2400m	180 1620' (1014') V2400m
D	R2400m	R2400m	R2400m	D NOT APPLICABLE

1 VNAV DA(H) in lieu of MDA(H) depends on operator policy.
 CHANGES: Airspaces added. Timing added. New AOM concept. © JEPPESEN, 2019, 2021. ALL RIGHTS RESERVED.

LRBM/BAY MARAMURES

2 JUL 21
Eff 15 Jul
16-2

BAIA MARE, ROMANIA NDB Y Rwy 09

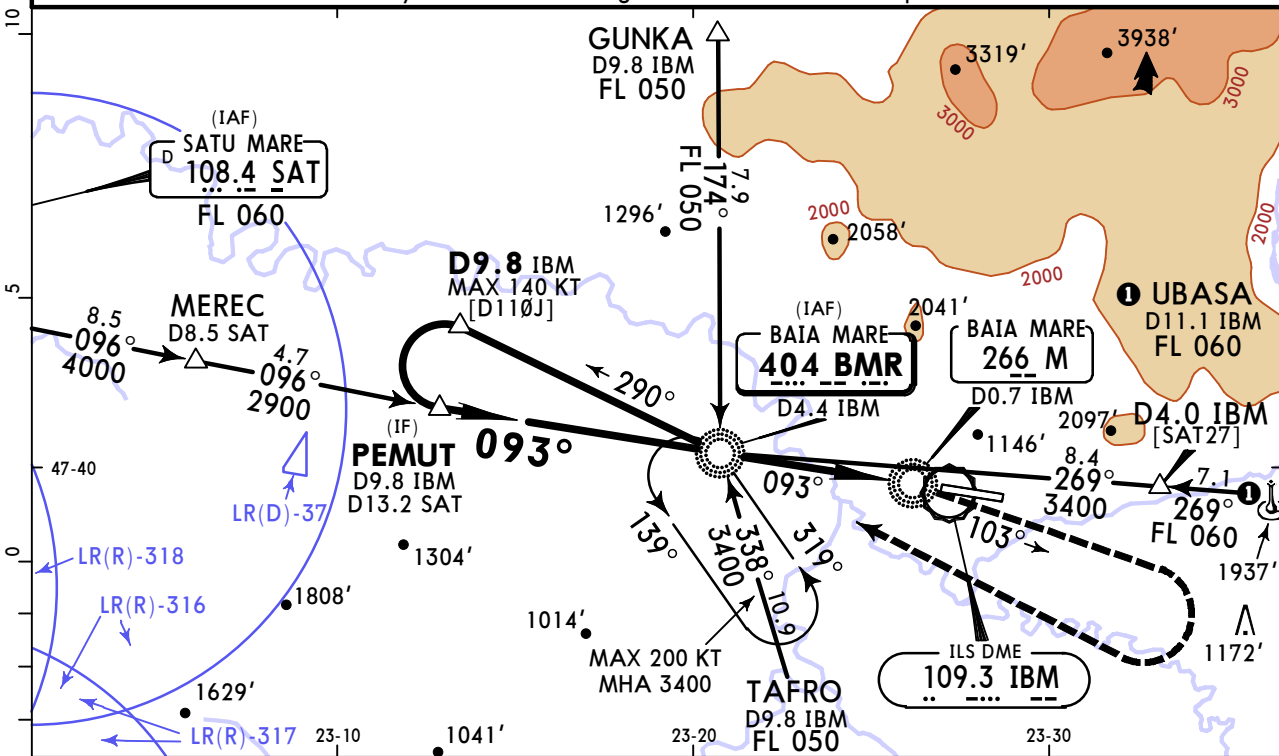
CAT A & B

BRIEFING STRIP™	BUCHAREST Control (R)	BAIA MARE Tower (8.33 exempted ACFT)		*SATU MARE Tower (8.33 exempted ACFT)		<p>MSA BMR NDB</p>
	130.230	118.855	118.1	119.655	118.8	
NDB BMR	Final Apch Crs	BMR NDB	DA/MDA(H)	Apt Elev 606'		
404	093°	1970' (1415')	Refer to Minimums	Rwy 555'		

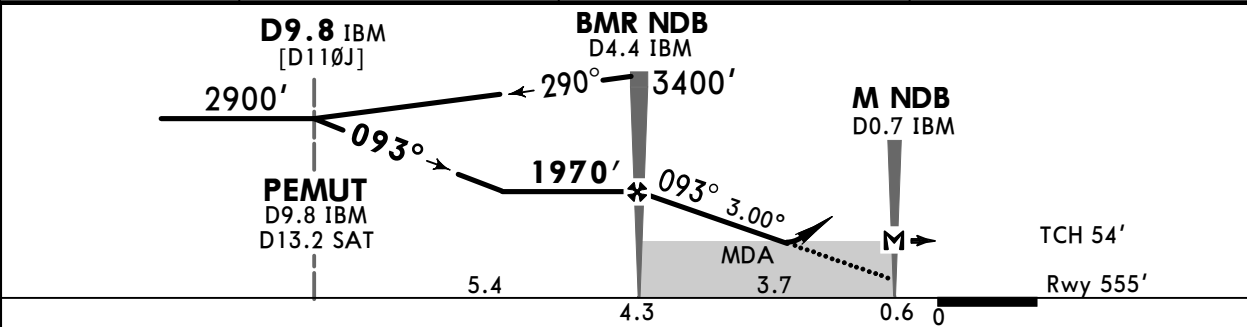
MISSED APCH: Climb on track 103° to 2200', then turn RIGHT (MAX 200 KT) to BMR NDB, climbing to 3400' and hold.
 Refer to minimums for missed apch climb gradient.

Alt Set: hPa (MM on req) Rwy Elev: 20 hPa Trans level: By ATC Trans alt: 4000'

1. VOR and DME required. 2. IBM DME, BMR NDB and M NDB must be serviceable. 3. SAT VOR must be serviceable for SAT arrivals only. 4. WARNING: High terrain North East of apt.



DIST. TO IBM DME	4.0	3.0	2.0
ALTITUDE	1830'	1512'	1193'



Gnd speed-Kts	70	90	100	120	140	160	HIALS-II PAPI 	2200' on 103°
Descent Angle	3.00°	372	478	531	637	743		
MAP at M NDB								
BMR NDB to MAP	3.7	3:10	2:28	2:13	1:51	1:35	1:23	

Std/State	STRAIGHT-IN LANDING			CIRCLE-TO-LAND Not authorized North of airport
	Missed apch climb gradient mim 4.0% CDFA	Missed apch climb gradient mim 3.0% CDFA	Missed apch climb gradient mim 2.5% CDFA	
1 DA/ A: 1110'(555') MDA(H) B: 1150'(595')	1 DA/ A: 1150'(595') MDA(H) B: 1170'(615')	1 DA/ A: 1160'(605') MDA(H) B: 1180'(625')		
ALS out	ALS out	ALS out	Max Kts	MDA(H)
A R1500m	R1500m	R1500m	100	1170'(564') 2 V1500m
B NOT APPLICABLE	NOT APPLICABLE	NOT APPLICABLE	135	1350'(744') V1600m
C NOT APPLICABLE	NOT APPLICABLE	NOT APPLICABLE	C	NOT APPLICABLE
D NOT APPLICABLE	NOT APPLICABLE	NOT APPLICABLE	D	NOT APPLICABLE

1 VNAV DA(H) in lieu of MDA(H) depends on operator policy. 2 or higher straight-in minimums.

LRBM/BAY MARAMURES

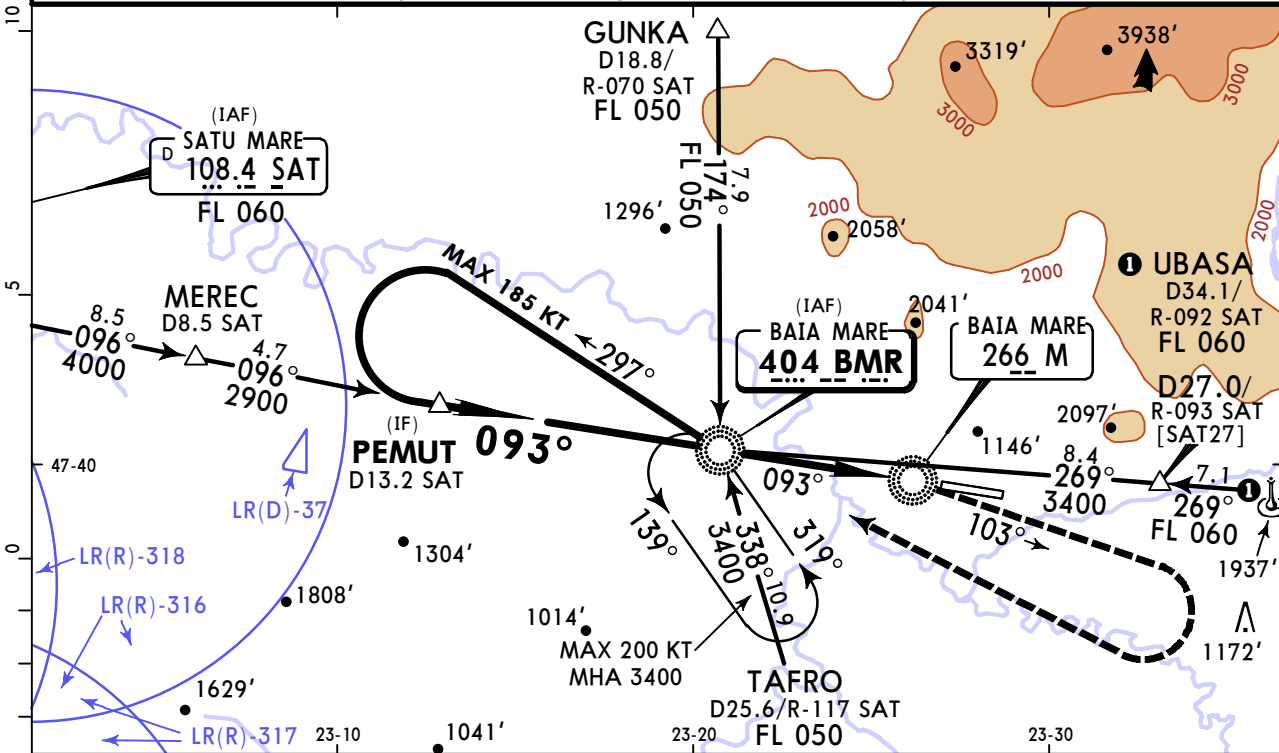
2 JUL 21
Eff 15 Jul (16-3)

CAT C & D

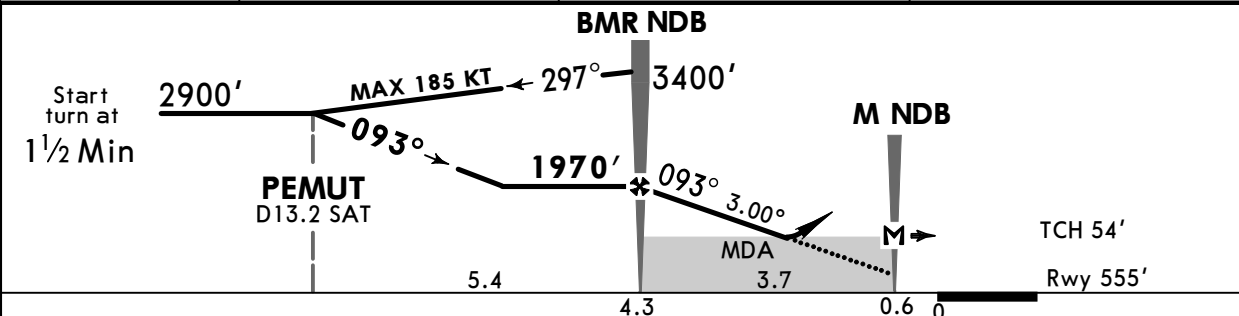
BAIA MARE, ROMANIA NDB X Rwy 09

BRIEFING STRIP™	BUCHAREST Control (R)	BAIA MARE Tower (8.33 exempted ACFT)		*SATU MARE Tower (8.33 exempted ACFT)		<p>MSA BMR NDB</p>
	130.230	118.855	118.1	119.655	118.8	
	NDB BMR 404	Final Apch Crs 093°	BMR NDB 1970' (1415')	DA/MDA(H) Refer to Minimums	Apt Elev 606' Rwy 555'	
MISSED APCH: Climb on track 103° to 2200', then turn RIGHT (MAX 200 KT) to BMR NDB, climbing to 3400' and hold. Refer to minimums for missed apch climb gradient.						

Alt Set: hPa (MM on req) Rwy Elev: 20 hPa Trans level: By ATC Trans alt: 4000'
 1. VOR and DME required. 2. BMR NDB and M NDB must be serviceable. 3. SAT VOR must be serviceable for SAT arrivals only. 4. WARNING: High terrain North East of apt.



DIST. TO THR	4.0	3.0	2.0
ALTITUDE	1878'	1560'	1242'



Gnd speed-Kts	70	90	100	120	140	160	HIALS-II PAPI 	2200' on 103°
Descent Angle	3.00°	372	478	531	637	743		
MAP at M NDB								
BMR NDB to MAP	3.7	3:10	2:28	2:13	1:51	1:35		

Timing not authorized for defining the MAP.

	Std/State		STRAIGHT-IN LANDING				CIRCLE-TO-LAND	
	Missed apch climb gradient mim 4.0%	CDFA	Missed apch climb gradient mim 3.0%	CDFA	Missed apch climb gradient mim 2.5%	CDFA	Not authorized	North of airport
	DA/ C: 1190' (635')	MDA(H) D: 1220' (665')	DA/ C: 1200' (645')	MDA(H) D: 1230' (675')	DA/ C: 1210' (655')	MDA(H) D: 1230' (675')		
	ALS out		ALS out		ALS out		Max Kts	MDA(H)
A	NOT APPLICABLE		NOT APPLICABLE		NOT APPLICABLE		A	NOT APPLICABLE
B	NOT APPLICABLE		NOT APPLICABLE		NOT APPLICABLE		B	NOT APPLICABLE
C	R2200m	R2400m	R2300m	R2400m	R2300m	R2400m	180	1620'(1014') V2400m
D	R2400m		R2400m		R2400m		D	NOT APPLICABLE

1 VNAV DA(H) in lieu of MDA(H) depends on operator policy.

LRBM/BAY MARAMURES

2 JUL 21
Eff 15 Jul

JEPPESSEN
16-4

CAT A & B

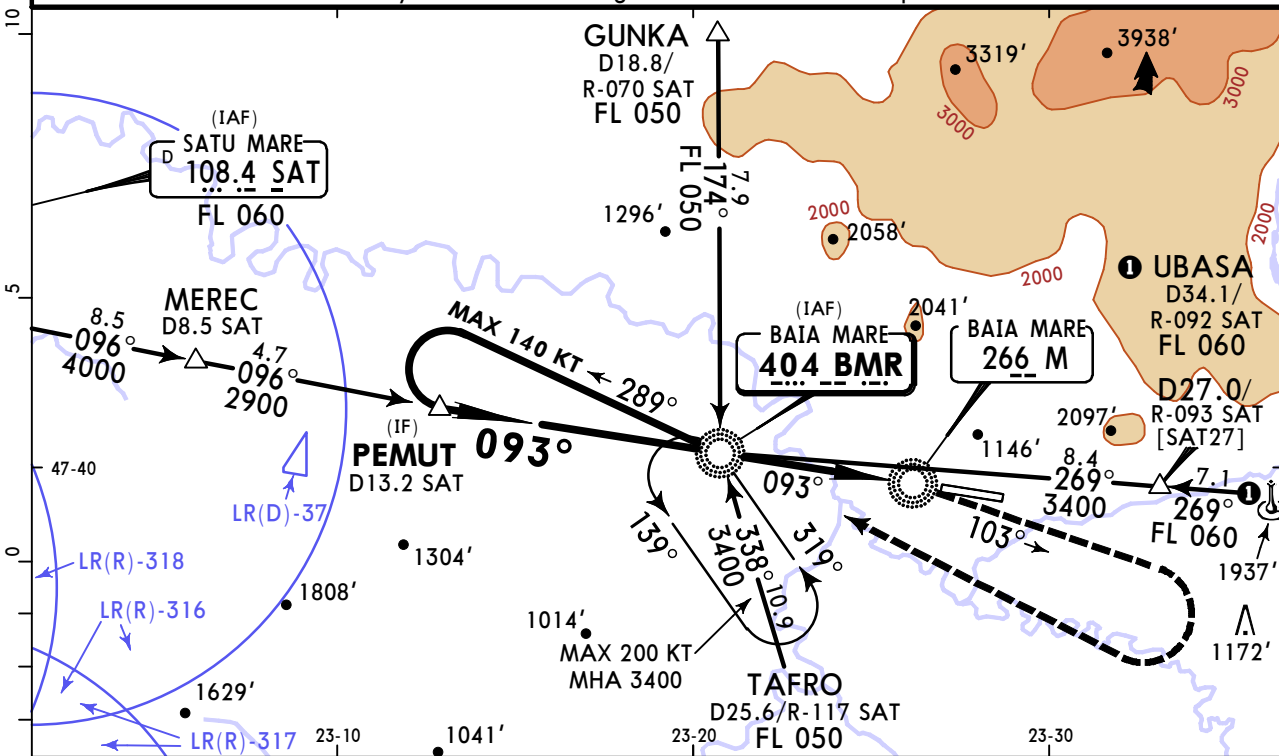
BAIA MARE, ROMANIA NDB W Rwy 09

BRIEFING STRIP™	BUCHAREST Control (R)	BAIA MARE Tower (8.33 exempted ACFT)		*SATU MARE Tower (8.33 exempted ACFT)		<p>MSA BMR NDB</p>
	130.230	118.855	118.1	119.655	118.8	
	NDB BMR 404	Final Apch Crs 093°	BMR NDB 1970' (1415')	DA/MDA(H) Refer to Minimums	Apt Elev 606' Rwy 555'	

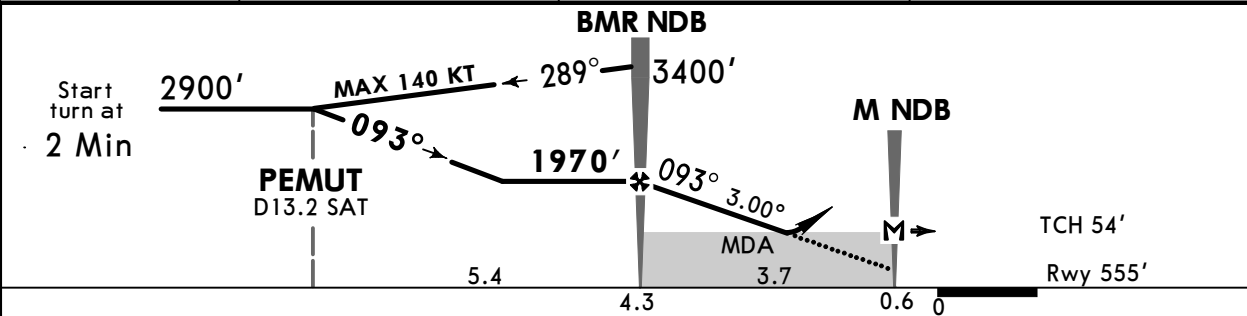
MISSED APCH: Climb on track 103° to 2200', then turn RIGHT (MAX 200 KT) to BMR NDB, climbing to 3400' and hold.
Refer to minimums for missed apch climb gradient.

Alt Set: hPa (MM on req) Rwy Elev: 20 hPa Trans level: By ATC Trans alt: 4000'

1. VOR and DME required. 2. BMR NDB and M NDB must be serviceable. 3. SAT VOR must be serviceable for SAT arrivals only. 4. WARNING: High terrain North East of apt.

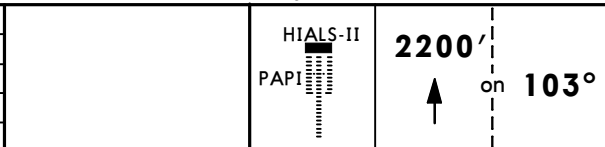


DIST. TO THR	4.0	3.0	2.0
ALTITUDE	1878'	1560'	1242'



Gnd speed-Kts	70	90	100	120	140	160
Descent Angle 3.00°	372	478	531	637	743	849
MAP at M NDB						
BMR NDB to MAP	3.7	3:10	2:28	2:13	1:51	1:35

Timing not authorized for defining the MAP.



Std/State	STRAIGHT-IN LANDING			CIRCLE-TO-LAND
	Missed apch climb gradient mim 4.0% CDFA DA/ A: 1110'(555') MDA(H) B: 1150'(595')	Missed apch climb gradient mim 3.0% CDFA DA/ A: 1150'(595') MDA(H) B: 1170'(615')	Missed apch climb gradient mim 2.5% CDFA DA/ A: 1160'(605') MDA(H) B: 1180'(625')	
A	R1500m	R1500m	R1500m	Max Kts: 100 MDA(H): 1170'(564') 2 V1500m
B				135 1350'(744') V1600m
C	NOT APPLICABLE	NOT APPLICABLE	NOT APPLICABLE	C NOT APPLICABLE
D				D NOT APPLICABLE

1 VNAV DA(H) in lieu of MDA(H) depends on operator policy. 2 or higher straight-in minimums.

Chart changes since cycle 15-2023

ADD = added chart, REV = revised chart, DEL = deleted chart.

ACT	PROCEDURE IDENT	INDEX	REV DATE	EFF DATE
-----	-----------------	-------	----------	----------

BAIA MARE, (MARAMURES - LRBM)

TERMINAL CHART CHANGE NOTICES

No Chart Change Notices for Airport LRBM