

## List of pages in this Trip Kit

Trip Kit Index

Airport Information For LRBV

Terminal Charts For LRBV

Revision Letter For Cycle 16-2023

Change Notices

Notebook

## General Information

Location: BRASOV ROU  
ICAO: LRBV  
Lat/Long: N45° 42.37', E025° 31.40'  
Elevation: 1764 ft

Airport Use: Public  
Daylight Savings: Observed  
UTC Conversion: -2:00 = UTC  
Magnetic Variation: 6.0° E

Fuel Types: 100 Octane (LL), Jet A-1  
Customs: No  
Airport Type: IFR  
Landing Fee: Yes  
Control Tower: Yes  
Jet Start Unit: No  
LLWS Alert: No  
Beacon: No

Sunrise: 0414 Z  
Sunset: 1602 Z

## Runway Information

Runway: 03  
Length x Width: 9252 ft x 148 ft  
Surface Type: concrete  
TDZ-Elev: 1764 ft  
Lighting: Edge, ALS, Centerline

Runway: 21  
Length x Width: 9252 ft x 148 ft  
Surface Type: concrete  
TDZ-Elev: 1721 ft  
Lighting: Edge, ALS, Centerline, TDZ

## Communication Information

Brasov Tower: 120.135 Secondary  
Brasov Tower: 118.630  
Brasov Approach: 120.135 Secondary  
Brasov Approach: 118.630

LRBV

JEPPESEN

BRASOV, ROMANIA

BRASOV-GHIMBAV

9 JUN 23

10-1P

Eff 15 Jun

AIRPORT BRIEFING

## 1. GENERAL

### 1.1. TAXI PROCEDURES

Follow-me vehicle assistance, may be requested by the pilot via TWR.

### 1.2. PARKING INFORMATION

Entry to the stand for ACFT will be made with guidance by the ground dispatcher. If the pilot operating on TWY A does not have the ground dispatcher in sight, near the parking position communicated by TWR, he stops the ACFT and requests ATC his presence.

### 1.3. OTHER INFORMATION

It is not allowed to use instrument flight procedures outside ATS hours of operations.

## 2. ARRIVAL

### 2.1. TAXI PROCEDURES

#### 2.1.1. STANDARD TAXI ROUTES

Arrival on	Instructions given by ATC			TWY to be followed	Instructions	Remarks
		Standard Taxi Route	To			
RWY 03	Taxi via standard taxi route	ARR 03	Stand 1 thru 3	A	After landing perform backtrack and vacate LEFT via TWYA.	Backtrack of ACFT with wingspan greater than 79'/24m is permitted only at the end of the RWY.
RWY 21		ARR 21			After landing, taxi and vacate LEFT via TWY A.	

LRBV

JEPPESEN

BRASOV, ROMANIA

BRASOV-GHIMBAV

9 JUN 23

10-1P1

Eff 15 Jun

AIRPORT BRIEFING

### 3. DEPARTURE

#### 3.1. START-UP AND PUSH-BACK PROCEDURES

Starting of the engines will be performed at the signals of the ground dispatcher only.

ACFT with the letter code A or B: exit from the stand without push-back if possible from the point of view of the maneuvering space, is performed only under the guidance of the ground dispatcher.

For ACFT with wingspan greater than 79'/24m, exit from the stand is performed only with push-back or with its own engines if the push-back equipment is not operational and there is maneuvering space.

#### 3.2. TAXI PROCEDURES

In order to avoid the effect of the jet blast on the circulation of vehicles and ACFT, the taxi for the departure from the stands, will be performed with the engines in Idle mode.

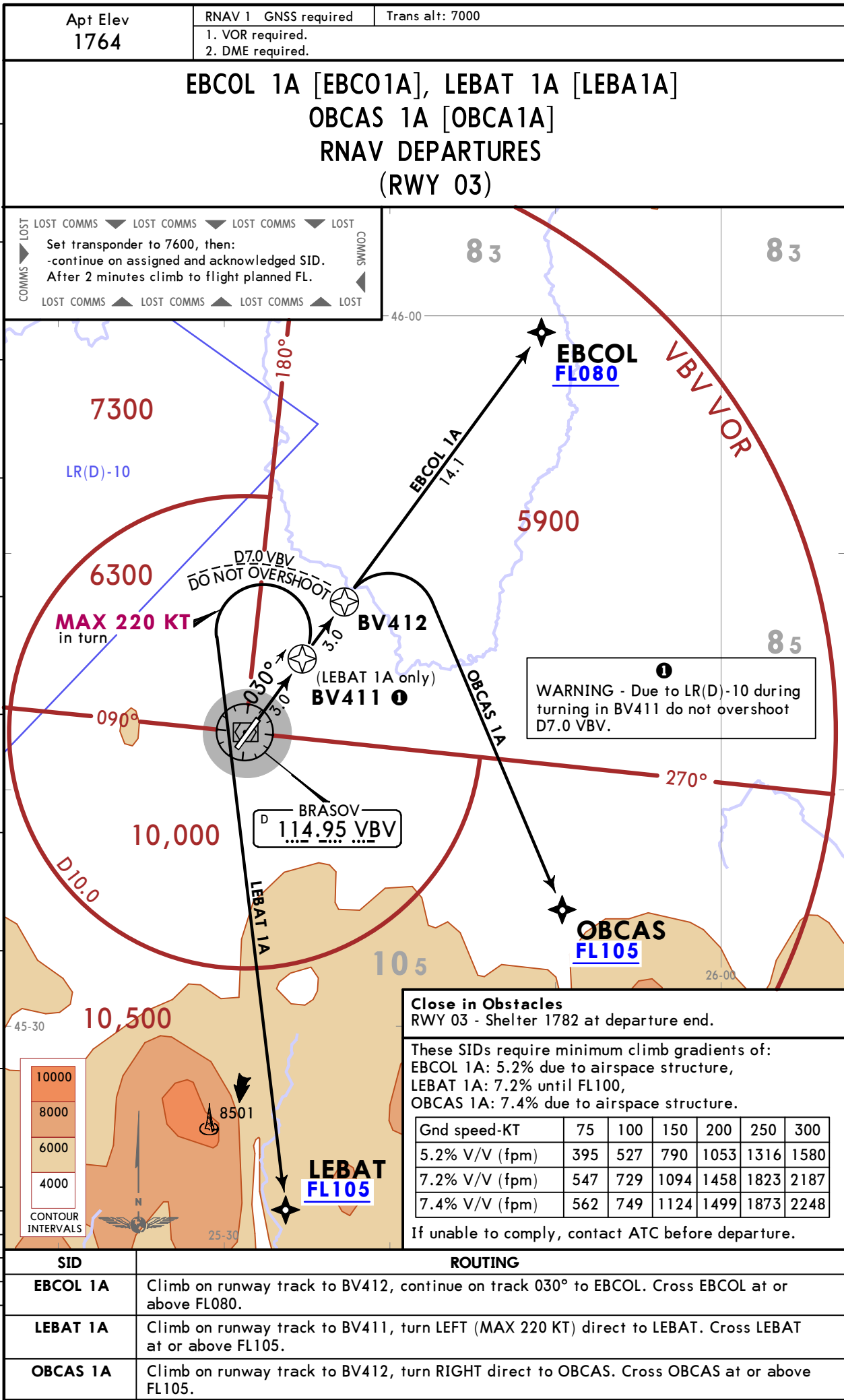
##### 3.2.1. STANDARD TAXI ROUTES

Departure from	Instructions given by ATC		TWY to be followed	RWY in Use	Instructions
		Standard Taxi Route			
Stands 1 thru 3	Taxi via standard taxi route	DEP 03	Active RWY	RWY 03	TWY A, taxi to THR, enter and line up.
		DEP 21		RWY 21	TWY A, turn RIGHT, taxi to end of the RWY and line up.

# LRBV BRASOV-GHIMBAV

**JEPPESSEN**  
9 JUN 23 **10-3** Eff 15 Jun

**BRASOV, ROMANIA**  
**RNAV SID**



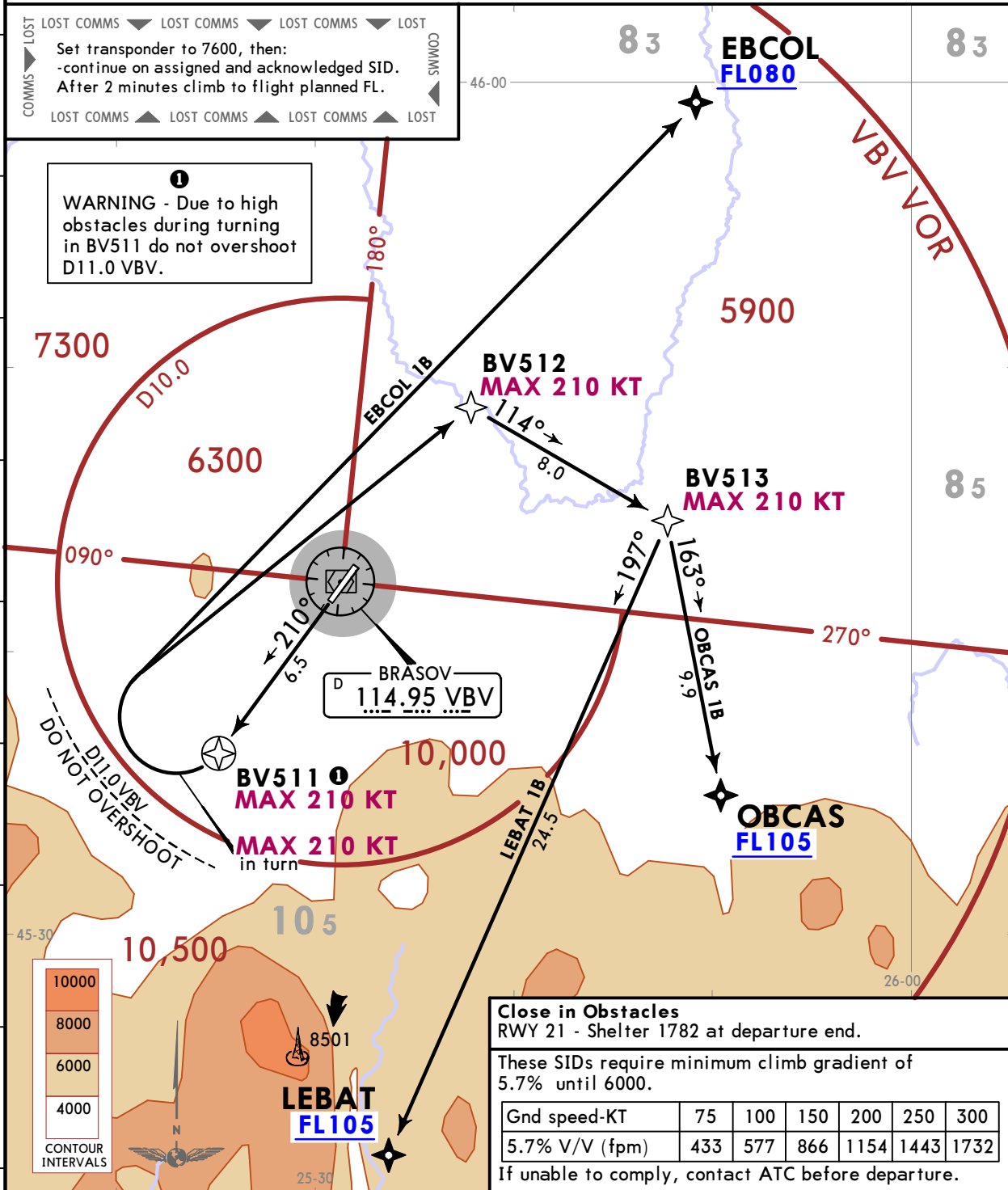
**LRBV**  
BRASOV-GHIMBAV

**JEPPESSEN**  
9 JUN 23 **10-3A** Eff 15 Jun

**BRASOV, ROMANIA**  
**RNAV SID**

Apt Elev <b>1764</b>	RNAV 1 GNSS required	Trans alt: 7000
	1. VOR required. 2. DME required.	

**EBCOL 1B [EBCO1B], LEBAT 1B [LEBA1B]  
OBCAS 1B [OBCA1B]  
RNAV DEPARTURES  
(RWY 21)**



SID	ROUTING
<b>EBCOL 1B</b>	Climb on runway track to BV511, turn RIGHT (MAX 210 KT) direct to EBCOL. Cross EBCOL at or above FL080.
<b>LEBAT 1B</b>	Climb on runway track to BV511, turn RIGHT (MAX 210 KT) direct to BV512. Continue on track 114° to BV513, then turn RIGHT on track 197° to LEBAT. Cross LEBAT at or above FL105.
<b>OBCAS 1B</b>	Climb on runway track to BV511, turn RIGHT (MAX 210 KT) direct to BV512. Continue on track 114° to BV513, turn RIGHT on track 163° to OBCAS. Cross OBCAS at or above FL105.

**LRBV**  
BRASOV-GHIMBAV

**JEPPESEN**  
9 JUN 23 **(10-3B)** Eff 15 Jun

**BRASOV, ROMANIA**  
**RNAV SID**

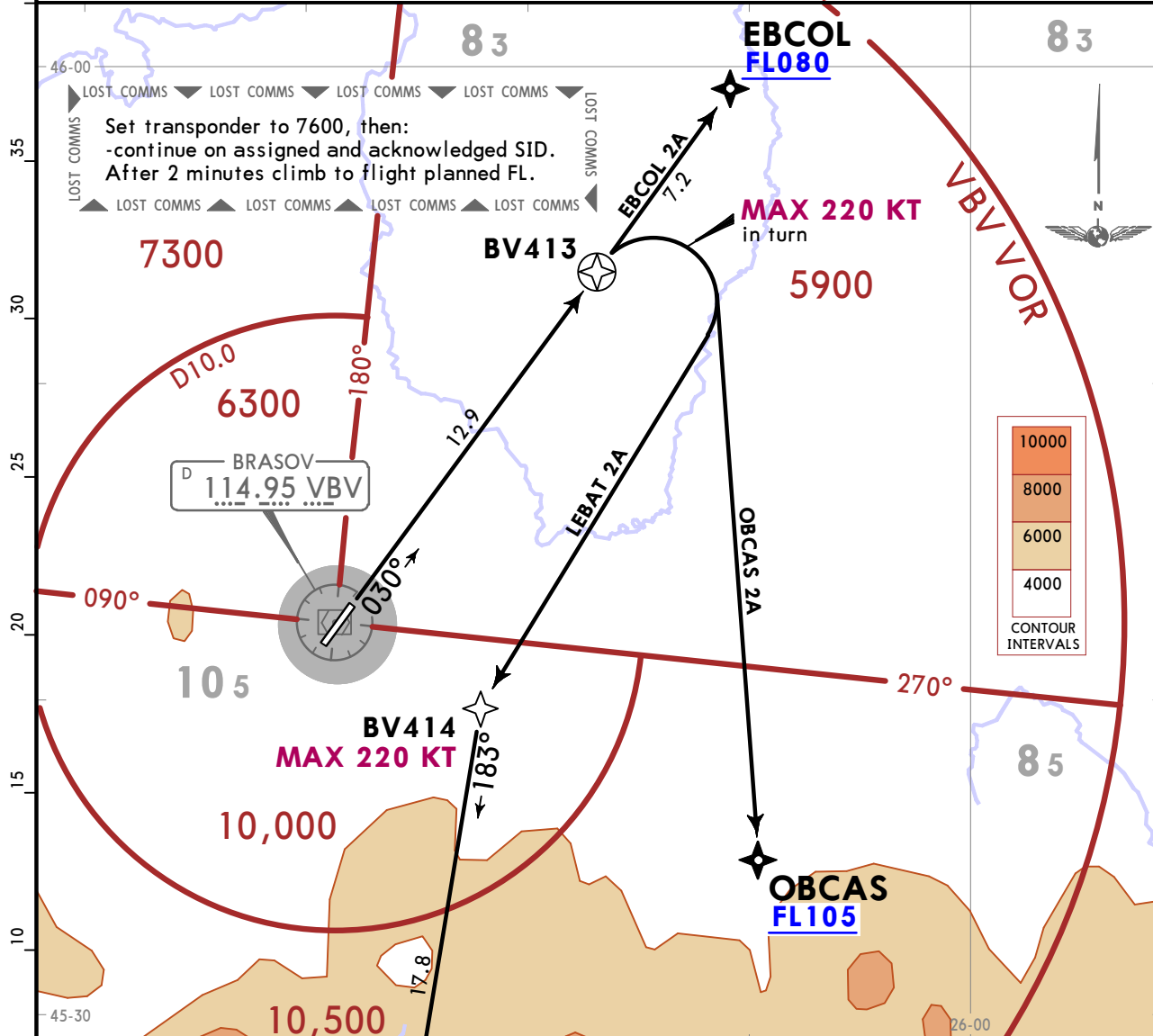
Apt Elev  
**1764**

Trans alt: 7000

RNAV 1 GNSS required

1. VOR required.  
2. DME required.

**EBCOL 2A [EBCO2A], LEBAT 2A [LEBA2A]  
OBCAS 2A [OBCA2A]  
RNAV DEPARTURES  
(RWY 03)**



SID	ROUTING
<b>EBCOL 2A</b>	Climb on runway track to BV413, track 030° to EBCOL. Cross EBCOL at or above FL080.
<b>LEBAT 2A</b>	Climb on runway track to BV413, turn RIGHT (MAX 220 KT) direct to BV414, track 183° to LEBAT. Cross LEBAT at or above FL105.
<b>OBCAS 2A</b>	Climb on runway track to BV413, turn RIGHT (MAX 220 KT) direct to OBCAS. Cross OBCAS at or above FL105.

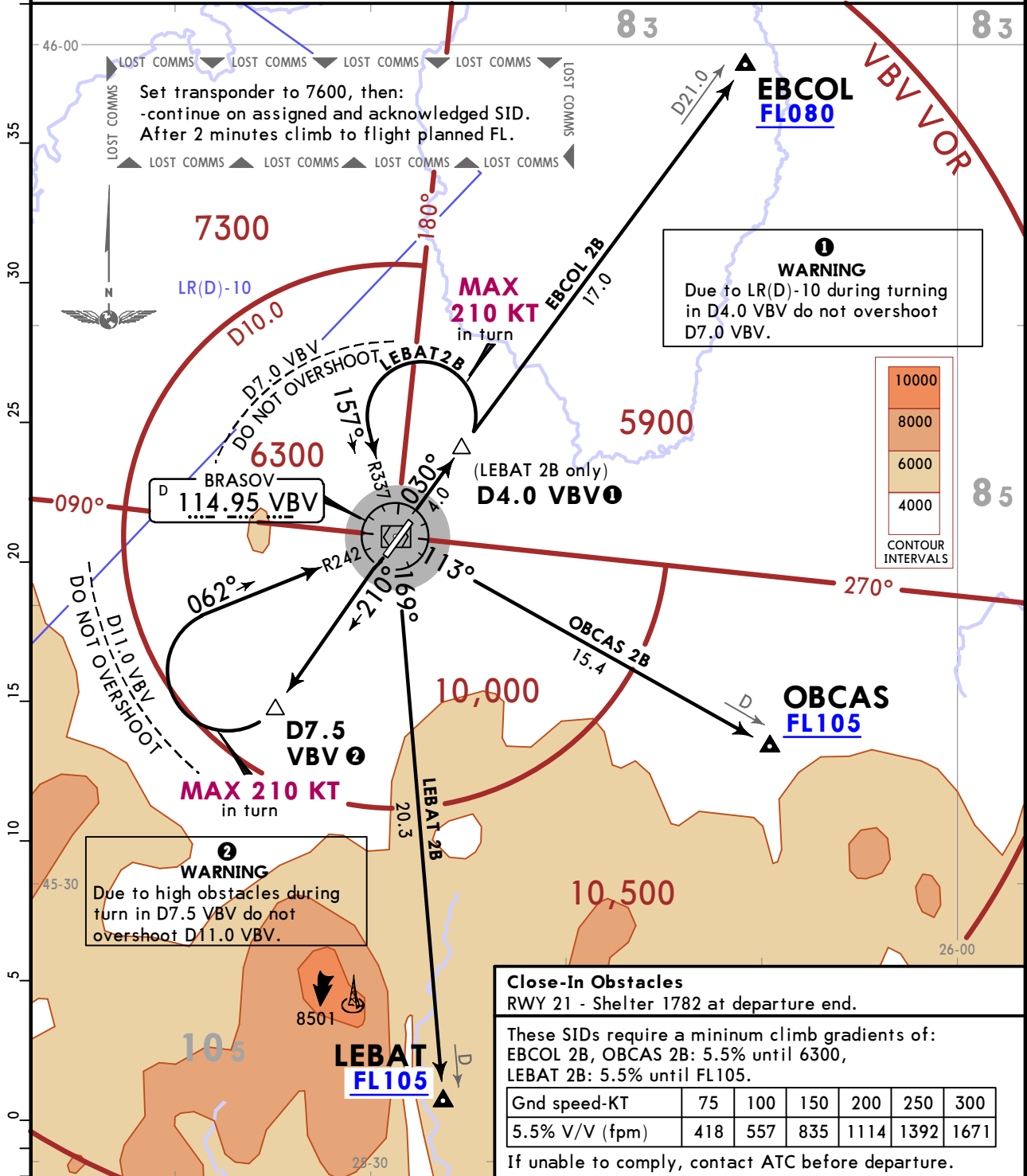
# LRBV BRASOV-GHIMBAV

**JEPPESSEN**  
9 JUN 23 **10-3C** Eff 15 Jun

**BRASOV, ROMANIA**  
**SID**

Apt Elev 1764  
Trans alt: 7000  
1. VBV VOR must be serviceable.  
2. VBV DME reads zero at facility.

## EBCOL 2B [EBCO2B] LEBAT 2B [LEBA2B] OBCAS 2B [OBCA2B] DEPARTURES (RWY 21)



SID	ROUTING
<b>EBCOL 2B</b>	Climb on VBV R210 to D7.5 VBV, turn RIGHT (MAX 210 KT) to intercept VBV R242 to VBV VOR, then VBV R030 to EBCOL. Cross EBCOL at or above FL080.
<b>LEBAT 2B</b>	Climb on VBV R210 to D7.5 VBV, turn RIGHT (MAX 210 KT) to intercept VBV R242 to VBV VOR, then VBV R030, at D4.0 VBV turn LEFT (MAX 210 KT), intercept VBV R337 to VBV VOR, then VBV R169 to LEBAT. Cross LEBAT at or above FL105.
<b>OBCAS 2B</b>	Climb on VBV R210 to D7.5 VBV, turn RIGHT (MAX 210 KT) to intercept VBV R242 to VBV VOR, then VBV R113 to OBCAS. Cross OBCAS at or above FL105.

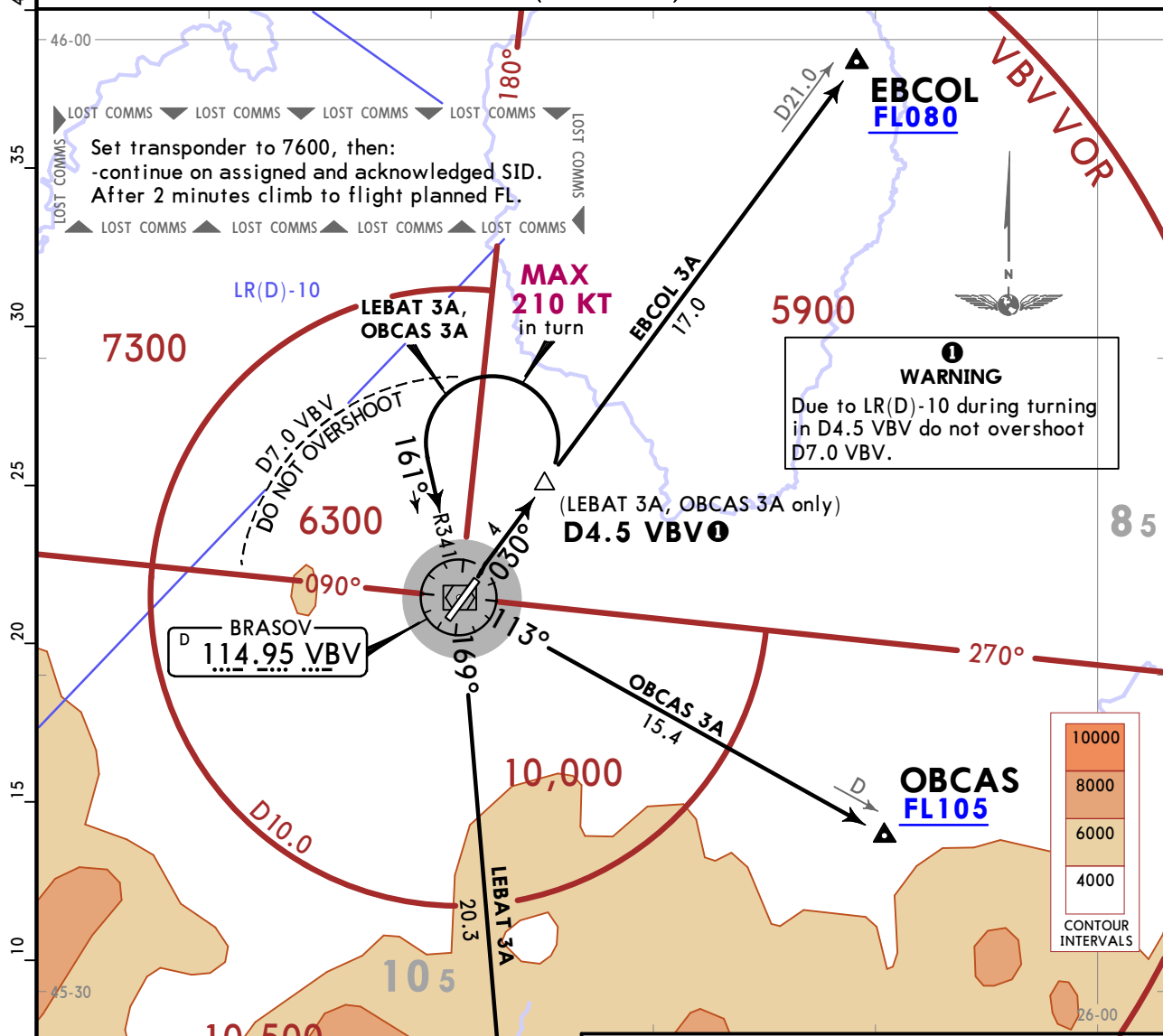
# LRBV BRASOV-GHIMBAV

**JEPPESEN**  
9 JUN 23 (10-3D) Eff 15 Jun

**BRASOV, ROMANIA**  
**SID**

Apt Elev 1764  
Trans alt: 7000  
1. VOR required.  
2. DME required.  
3. VBV VOR must be serviceable.  
4. VBV DME reads zero at the facility.

## EBCOL 3A [EBCO3A], LEBAT 3A [LEBA3A] OBCAS 3A [OBCA3A] DEPARTURES (RWY 03)



**Close-In Obstacles**  
RWY 03 - Shelter 1782 at departure end.

These SIDs require a minimum climb gradients of:  
EBCOL 3A: 5.2% due to airspace structure,  
LEBAT 3A: 6.0% until FL105,  
OBCAS 3A: 6.4% due to airspace structure.

Gnd speed-KT	75	100	150	200	250	300
5.2% V/V (fpm)	395	527	790	1053	1316	1580
6.0% V/V (fpm)	456	608	911	1215	1519	1823
6.4% V/V (fpm)	486	648	972	1296	1620	1944

If unable to comply, contact ATC before departure.

SID	ROUTING
<b>EBCOL 3A</b>	Climb on VBV R030 to EBCOL. Cross EBCOL at or above FL080.
<b>LEBAT 3A</b>	Climb on VBV R030 to D4.5 VBV, turn LEFT (MAX 210 KT) to intercept VBV R341 to VBV VOR, then VBV R169 to LEBAT. Cross LEBAT at or above FL105.
<b>OBCAS 3A</b>	Climb on VBV R030 to D4.5 VBV, turn LEFT (MAX 210 KT) to intercept VBV R341 to VBV VOR, then VBV R113 to OBCAS. Cross OBCAS at or above FL105.

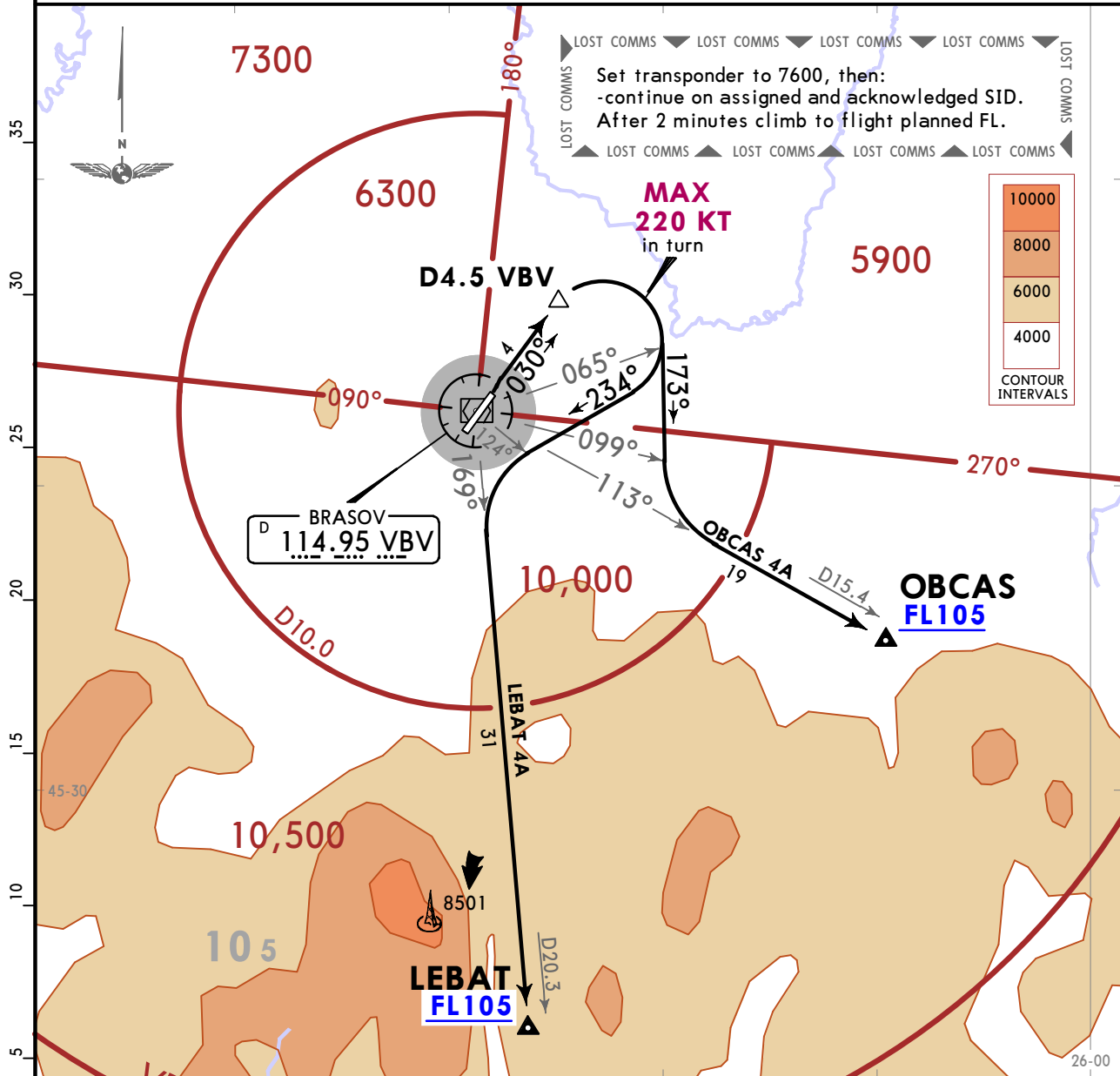
# LRBV BRASOV-GHIMBAV

**JEPPESEN**  
9 JUN 23 **(10-3E)** Eff 15 Jun

**BRASOV, ROMANIA**  
**SID**

Apt Elev **1764**  
Trans alt: 7000  
1. VOR required.  
2. DME required.  
3. VBV VOR must be serviceable.  
4. VBV DME reads zero at the facility.

## LEBAT 4A [LEBA4A] OBCAS 4A [OBCA4A] DEPARTURES (RWY 03)



**Close-In Obstacles**  
RWY 03 - Shelter 1782 at departure end.

These SIDs require a minimum climb gradients of:  
LEBAT 4A: 6.6% until FL105,  
OBCAS 4A: 8.3% due to airspace structure.

Gnd speed-KT	75	100	150	200	250	300
6.6% V/V (fpm)	501	668	1003	1337	1671	2005
8.3% V/V (fpm)	630	841	1261	1681	2101	2522

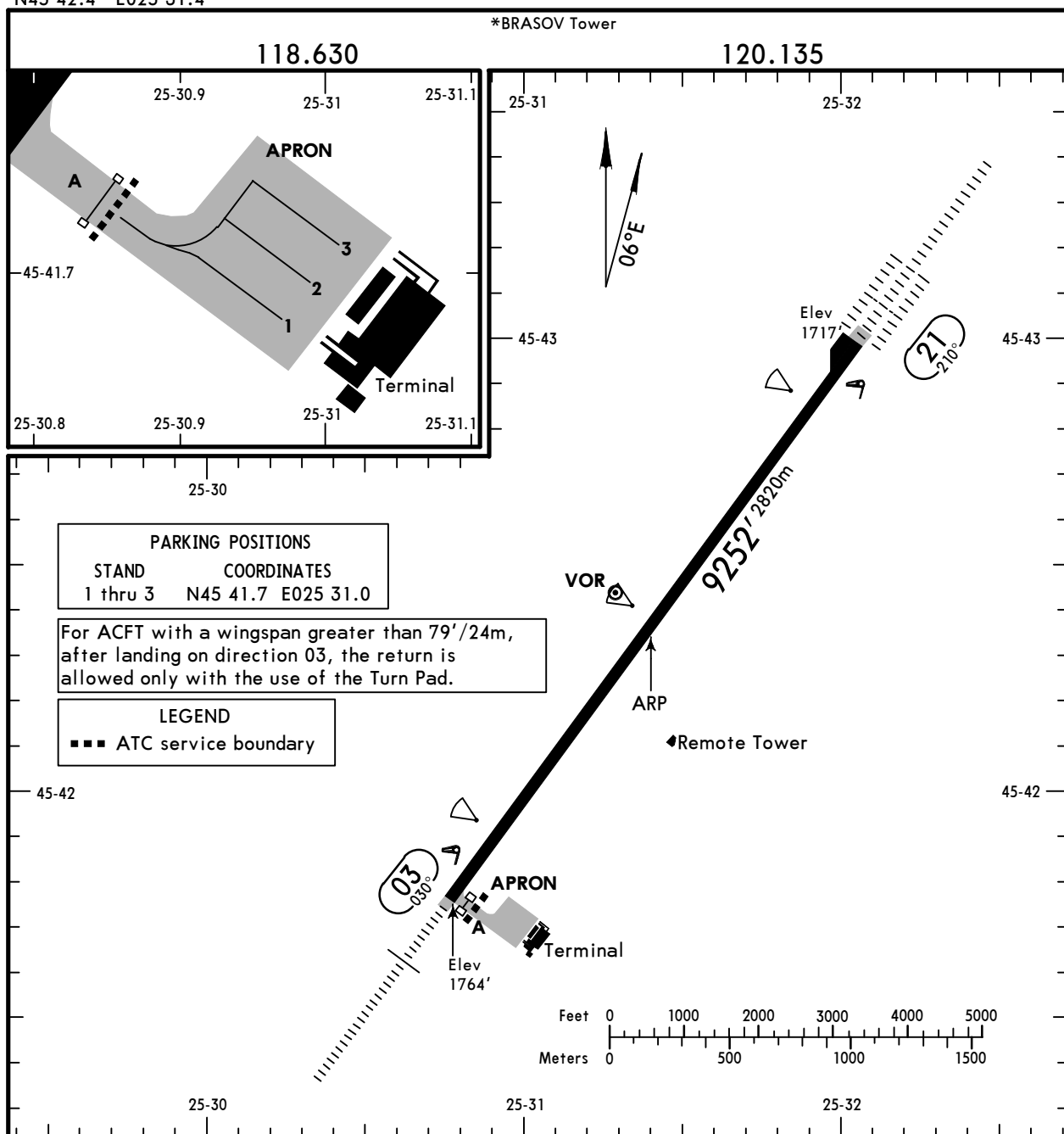
If unable to comply, contact ATC.

SID	ROUTING
<b>LEBAT 4A</b>	Climb on VBV R030 to D4.5 VBV, turn RIGHT (MAX 220 KT), track 234°, intercept VBV R169 to LEBAT. Cross LEBAT at or above FL105.
<b>OBCAS 4A</b>	Climb on VBV R030 to D4.5 VBV, turn RIGHT (MAX 220 KT), track 173°, intercept VBV R113 to OBCAS. Cross OBCAS at or above FL105.

**LRBV**  
 Apt Elev **1764'**  
 N45 42.4 E025 31.4

**JEPPESEN**  
 21 JUL 23 **(10-9)**

**BRASOV, ROMANIA**  
**BRASOV-GHIMBAV**



PARKING POSITIONS	
STAND	COORDINATES
1 thru 3	N45 41.7 E025 31.0

For ACFT with a wingspan greater than 79'/24m, after landing on direction 03, the return is allowed only with the use of the Turn Pad.

LEGEND	
■ ■ ■	ATC service boundary

**ADDITIONAL RUNWAY INFORMATION**

RWY	USABLE LENGTHS				WIDTH
	HIRL (60m)	CL (15m)	① HIALS PAPI-L ②	RVR	
03	HIRL (60m)	CL (15m)	① HIALS PAPI-L ②	RVR	148' 45m
21	HIRL (60m)	CL (15m)	① ALSF-II TDZ PAPI-L ③	RVR	

- ① length 900m
- ② (angle 3.5°)
- ③ (angle 3.0°)

**Std/State TAKE-OFF**

Low Visibility Procedures required				RCLM or RL or CL	RL or CL	Adequate Vis Ref	
Approval for Low Visibility Take-off required						DAY	NIGHT
RCLM & RL & CL (spacing 15m or less) & RVR	RCLM & RL & CL & RVR	RCLM & RL & RVR	RCLM & RVR & RL or CL	DAY	NIGHT	DAY	NIGHT
R125m	R150m	R300m		R/V400m		R/V500m	NA



## ILS RWY 21 MINIMUMS

### MISSED APCH CLIMB GRADIENT MIN 3.0% (183'/NM)

Std/State		STRAIGHT-IN LANDING ILS	
		A: <b>2072'</b> (355') C: <b>2092'</b> (375') DA(H) B: <b>2082'</b> (365') D: <b>2101'</b> (384')	
		TDZ or CL out	ALS out
A	R900m	R900m	R1500m
B	R1000m	R1000m	
C	R1000m	R1000m	R1700m
D	R1100m	R1100m	R1800m

Std/State		STRAIGHT-IN LANDING LOC (GS out) CDFA			
		with D2.2 IBV/D2.8 VBV <b>1</b> DA/MDA(H)		w/o D2.2 IBV/D2.8 VBV <b>1</b> DA/MDA(H)	
		A: <b>2150'</b> (433') C: <b>2190'</b> (473') B: <b>2160'</b> (443') D: <b>2210'</b> (493')		ABC: <b>2190'</b> (473') D: <b>2210'</b> (493')	
		TDZ or CL out	ALS out	TDZ or CL out	ALS out
A	R1300m	R1300m	R1500m	R1500m	R1500m
B	R1400m	R1400m			R2200m
C	R1500m	R1500m	R2300m	R1500m	R2200m
D	R1500m	R1500m	R2300m	R1500m	R2300m

**1** VNAV DA(H) in lieu of MDA(H) depends on operator policy.

### MISSED APCH CLIMB GRADIENT MIN 2.5% (152'/NM)

Std/State		STRAIGHT-IN LANDING ILS	
		A: <b>2349'</b> (632') C: <b>2368'</b> (651') DA(H) B: <b>2359'</b> (642') D: <b>2378'</b> (661')	
		TDZ or CL out	ALS out
A	R1500m		
B	R1500m		
C	R2300m	R2300m	R2400m
D	R2400m	R2400m	

Std/State		STRAIGHT-IN LANDING LOC (GS out) CDFA	
		<b>2</b> DA/MDA(H) A: <b>2510'</b> (793') C: <b>2560'</b> (843') B: <b>2530'</b> (813') D: <b>2580'</b> (863')	
		TDZ or CL out	ALS out
A	R1500m		
B	R1500m		
C	R2400m		
D	R2400m		

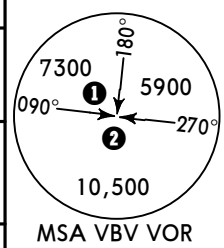
**2** VNAV DA(H) in lieu of MDA(H) depends on operator policy.

# LRBV BRASOV-GHIMBAV

**JEPPESSEN**  
9 JUN 23 (12-1) Eff 15 Jun

# BRASOV, ROMANIA RNP Z Rwy 03

*BRASOV Approach		*BRASOV Tower		
118.630	120.135	118.630	120.135	
EGNOS <b>Ch 83215</b> E03A	Final Apch Crs <b>030°</b>	BV402 MANDATORY 3700' (1936')	LPV DA(H) 2014' (250')	Apt Elev 1764' Rwy 1764'

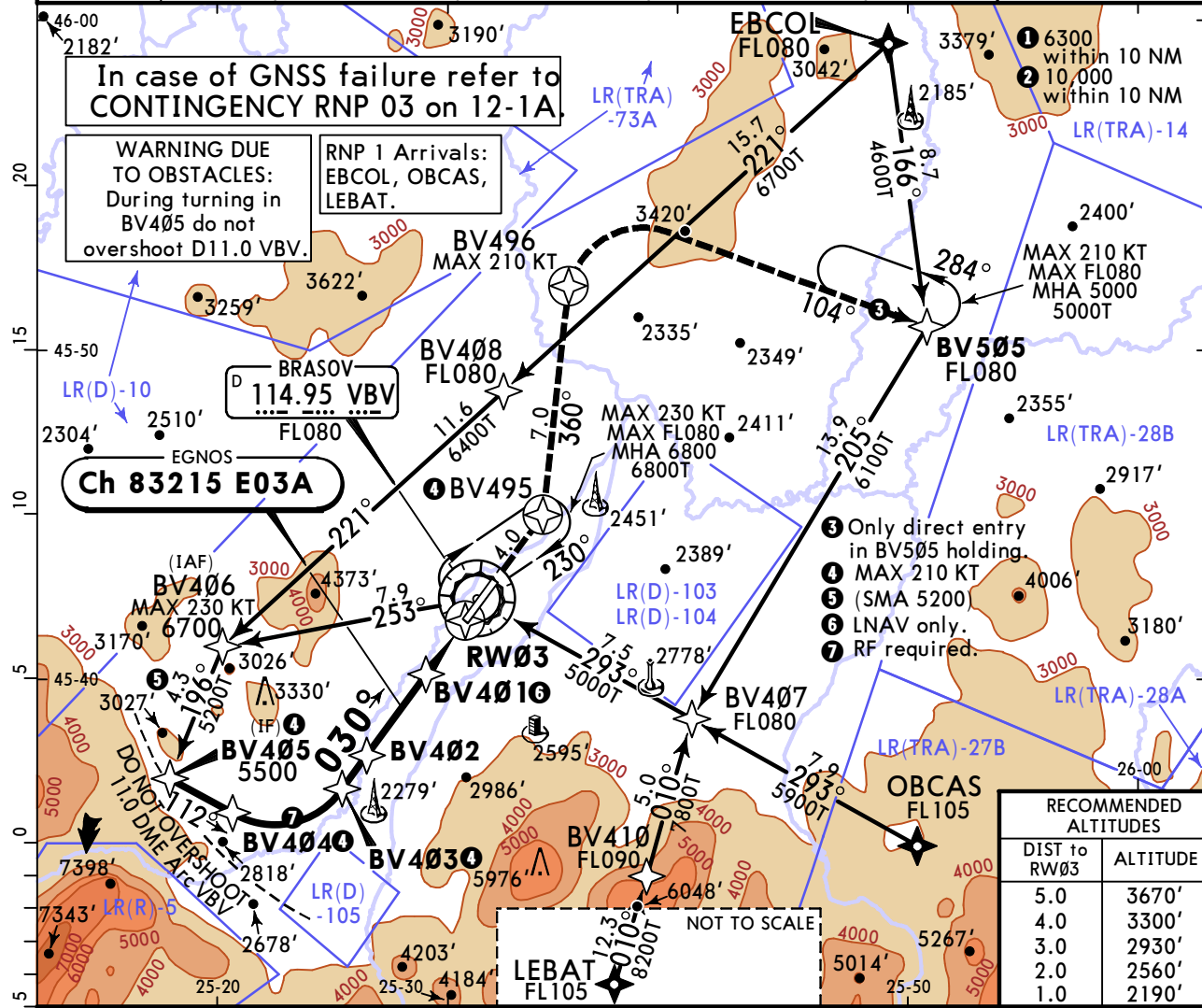


MISSED APCH: Climb STRAIGHT AHEAD on Rwy track to BV495, turn LEFT (MAX 210 KT) track 360° to BV496, turn RIGHT (MAX 210 KT) direct to BV505 and hold at or above 5000'.

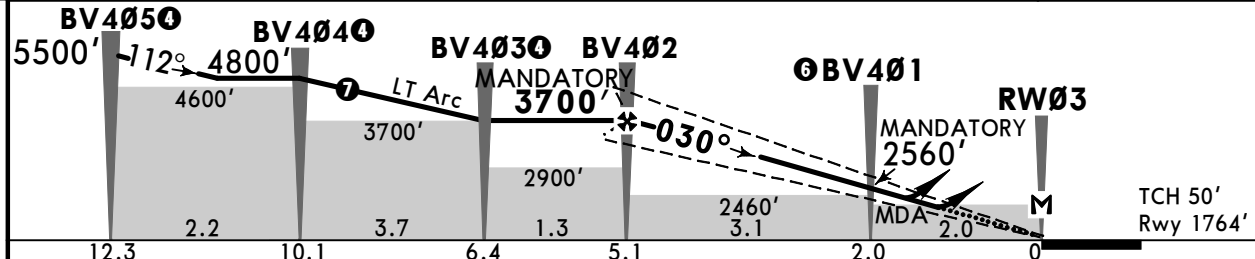
Alt Set: hPa Rwy Elev: 63 hPa Trans level: By ATC Trans alt: 7000'  
RNP APCH 1. VOR required. 2. DME required. 3. MIN temp -25°C. 4. MAX temp 10°C.

In case of GNSS failure refer to CONTINGENCY RNP 03 on 12-1A

WARNING DUE TO OBSTACLES: During turning in BV405 do not overshoot D11.0 VBV.



RECOMMENDED ALTITUDES	
DIST to RW03	ALTITUDE
5.0	3670'
4.0	3300'
3.0	2930'
2.0	2560'
1.0	2190'



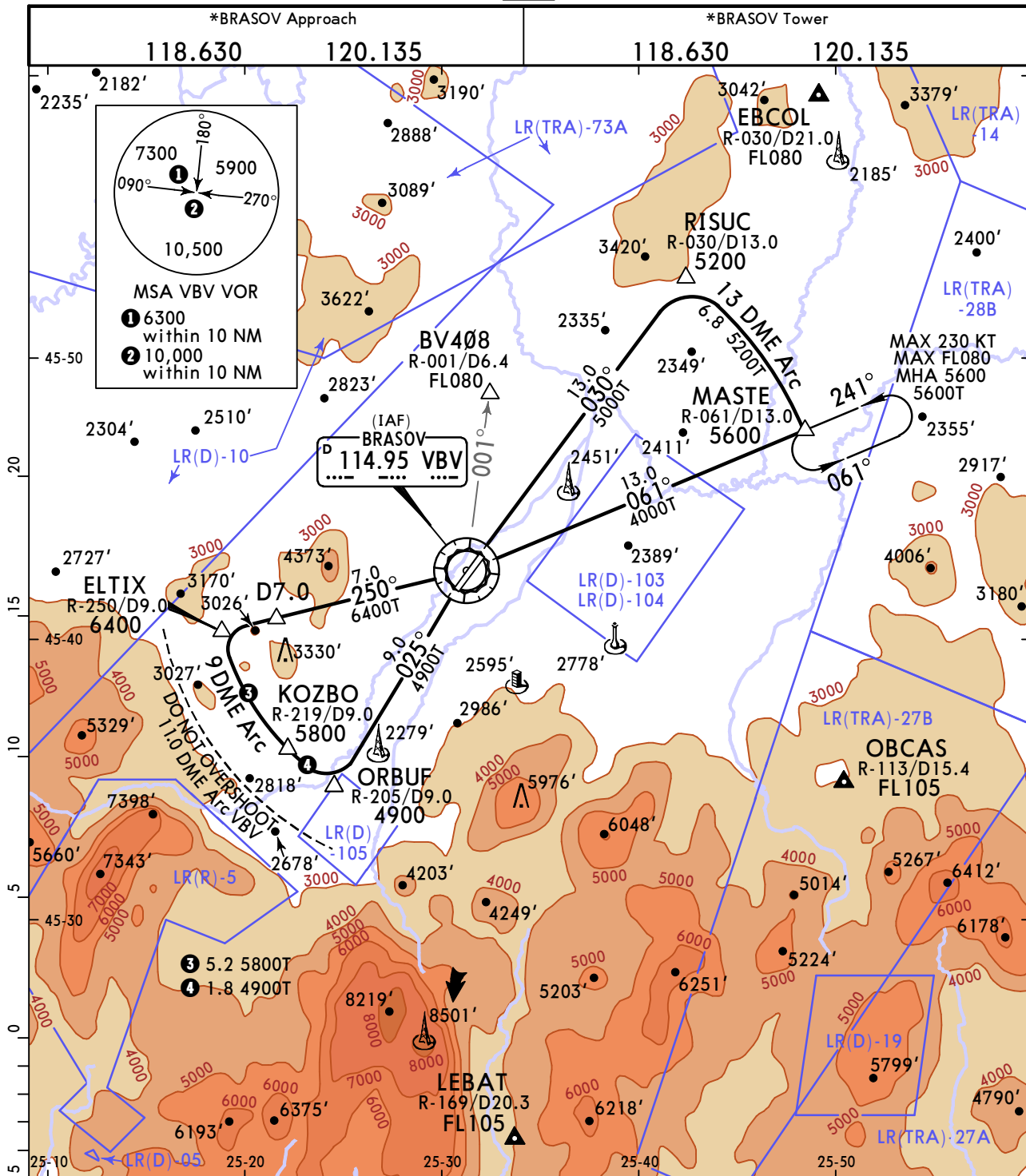
Gnd speed-Kts	70	90	100	120	140	160
Glide Path Angle	3.50°	434	557	619	743	867
MAP at RW03						
BV402 to MAP	5.1	4:22	3:24	3:04	2:33	2:11

PANS OPS	<b>Std/State</b>		STRAIGHT-IN LANDING		CIRCLE-TO-LAND Not authorized East of apt	
	1 LPV		LNAV CDFA			
	DA(H) 2014' (250')		DA/MDA(H) 2310' (546')			
	ALS out		ALS out		Max Kts	
A	R750m	R1300m	R1500m	100	2380' (616')	V1500m
B				135	2460' (696')	V1600m
C				180	2740' (976')	V2400m
D				D	NA	

# LRBV BRASOV-GHIMBAV

9 JUN 23  
Eff 15 Jun **12-1A**

# BRASOV, ROMANIA CONTINGENCY RNP 03



Alt Set: hPa      Rwy Elev: 63 hPa      Trans level: By ATC      Trans alt: 7000'

1. DME required. 2. VBV VOR must be serviceable.

Chart to be used in case of GNSS failure for RNP 03.  
 Chart NOT for landing.  
 Chart NOT ICAO compliant.  
 Warning due to obstacles: During turning missed approach do not overshoot D11.0 VBV.

SIGNAL LOSS		INSTRUCTIONS
after EBCOL	before BV408	Turn LEFT direct to VBV VOR. At VBV VOR intercept R-250 and follow trajectories to enter hold at MASTE or as instructed by ATC.
	after BV408	Turn LEFT climbing to FL080 direct to VBV VOR and, 1. If below 5000' follow VBV on R-030, intercept D13.0 to MASTE and hold or as instructed by ATC. 2. If above 5000', follow VBV VOR on R-061 to MASTE and hold or as instructed by ATC.
after OBCAS		Maintain altitude/flight level, proceed to VBV VOR, ATC instructions will be provided.
after LEBAT		Maintain altitude/flight level, proceed to VBV VOR, ATC instructions will be provided.

### Chart changes since cycle 15-2023

ADD = added chart, REV = revised chart, DEL = deleted chart.

ACT	PROCEDURE IDENT	INDEX	REV DATE	EFF DATE
-----	-----------------	-------	----------	----------

**BRASOV, (BRASOV-GHIMBAV - LRBV)**

## TERMINAL CHART CHANGE NOTICES

No Chart Change Notices for Airport LRBV