

List of pages in this Trip Kit

Trip Kit Index

Airport Information For LRCK

Terminal Charts For LRCK

Revision Letter For Cycle 16-2023

Change Notices

Notebook

General Information

Location: CONSTANTA ROU
ICAO/IATA: LRCK / CND
Lat/Long: N44° 21.73', E028° 29.30'
Elevation: 353 ft

Airport Use: Public
Daylight Savings: Observed
UTC Conversion: -2:00 = UTC
Magnetic Variation: 7.0° E

Fuel Types: Jet A-1
Customs: Yes
Airport Type: IFR
Landing Fee: Yes
Control Tower: Yes
Jet Start Unit: No
LLWS Alert: No
Beacon: No

Sunrise: 0402 Z
Sunset: 1551 Z

Runway Information

Runway: 18
Length x Width: 11483 ft x 148 ft
Surface Type: concrete
TDZ-Elev: 353 ft
Lighting: Edge, ALS, Centerline

Runway: 36
Length x Width: 11483 ft x 148 ft
Surface Type: concrete
TDZ-Elev: 315 ft
Lighting: Edge, ALS, Centerline, TDZ

Communication Information

ATIS: 118.750
Constanta Tower: 124.030
Constanta Tower: 120.450 Secondary
Constanta Approach: 127.350 Secondary
Constanta Approach: 122.905

LRCK/CND MIHAIL KOGALNICEANU-CONSTANTA

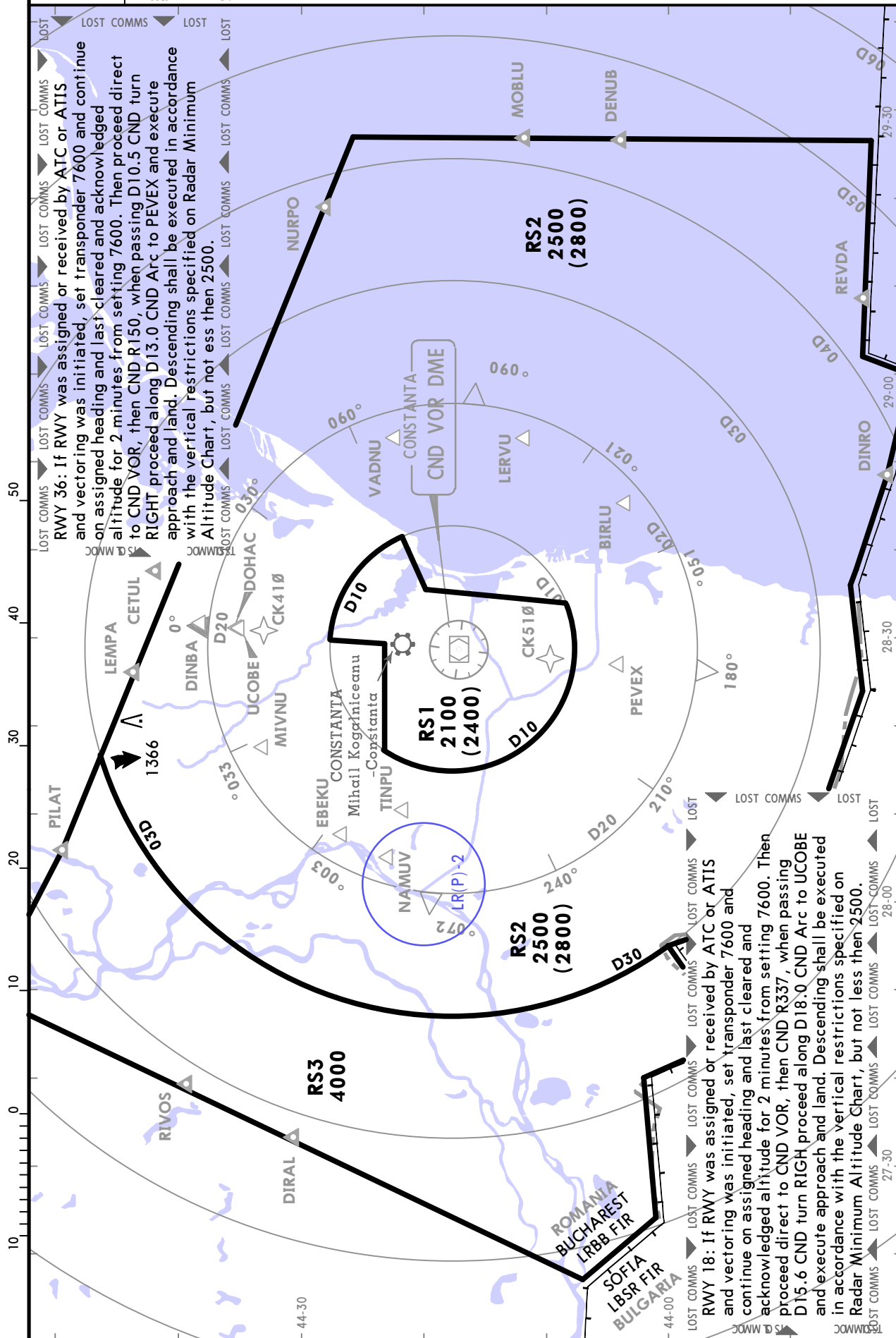
7 JUL 23 **10-1R** Eff 13 Jul

CONSTANTA, ROMANIA RADAR MINIMUM ALTITUDES

Apt Elev
353

Alt Set: hPa (MM on request) Trans level: By ATC Trans alt: 4000

1. This chart may only be used for cross-checking of altitudes assigned while under radar control.
2. In bracketest there are minimum altitudes integrating a correction for temperatures lower than -11°C.



CHANGES: Sectors and altitudes revised.

© JEPPesen, 2010, 2023. ALL RIGHTS RESERVED.

LRCK/CND MIHAIL KOGALNICEANU- CONSTANTA

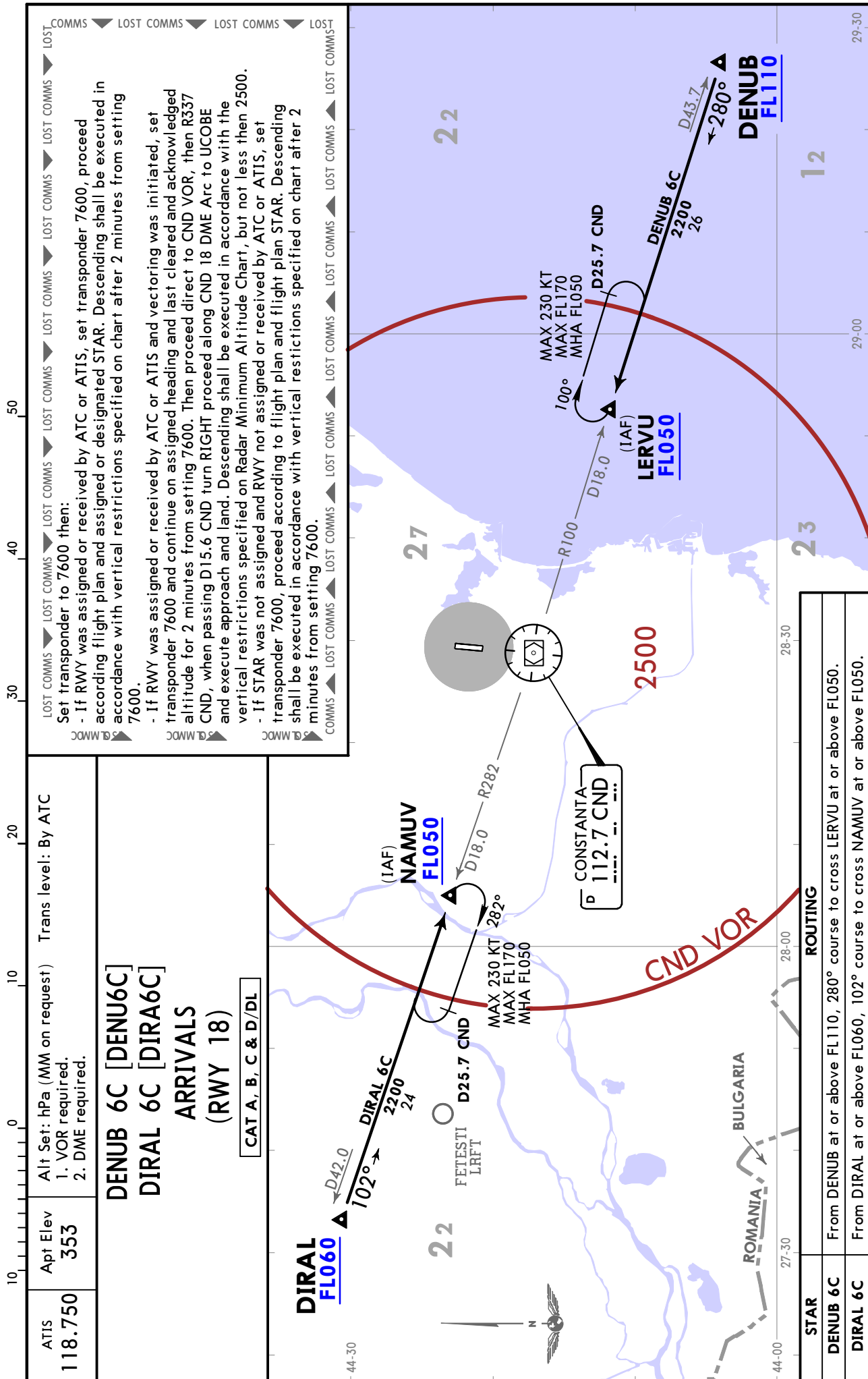
7 JUL 23

10-2

Eff 13 Jul

JEPPESSEN CONSTANTA, ROMANIA

STAR



7 JUL 23
 Apt Elev 353
 Trans alt: 4000
 1. VOR required.
 2. DME required.

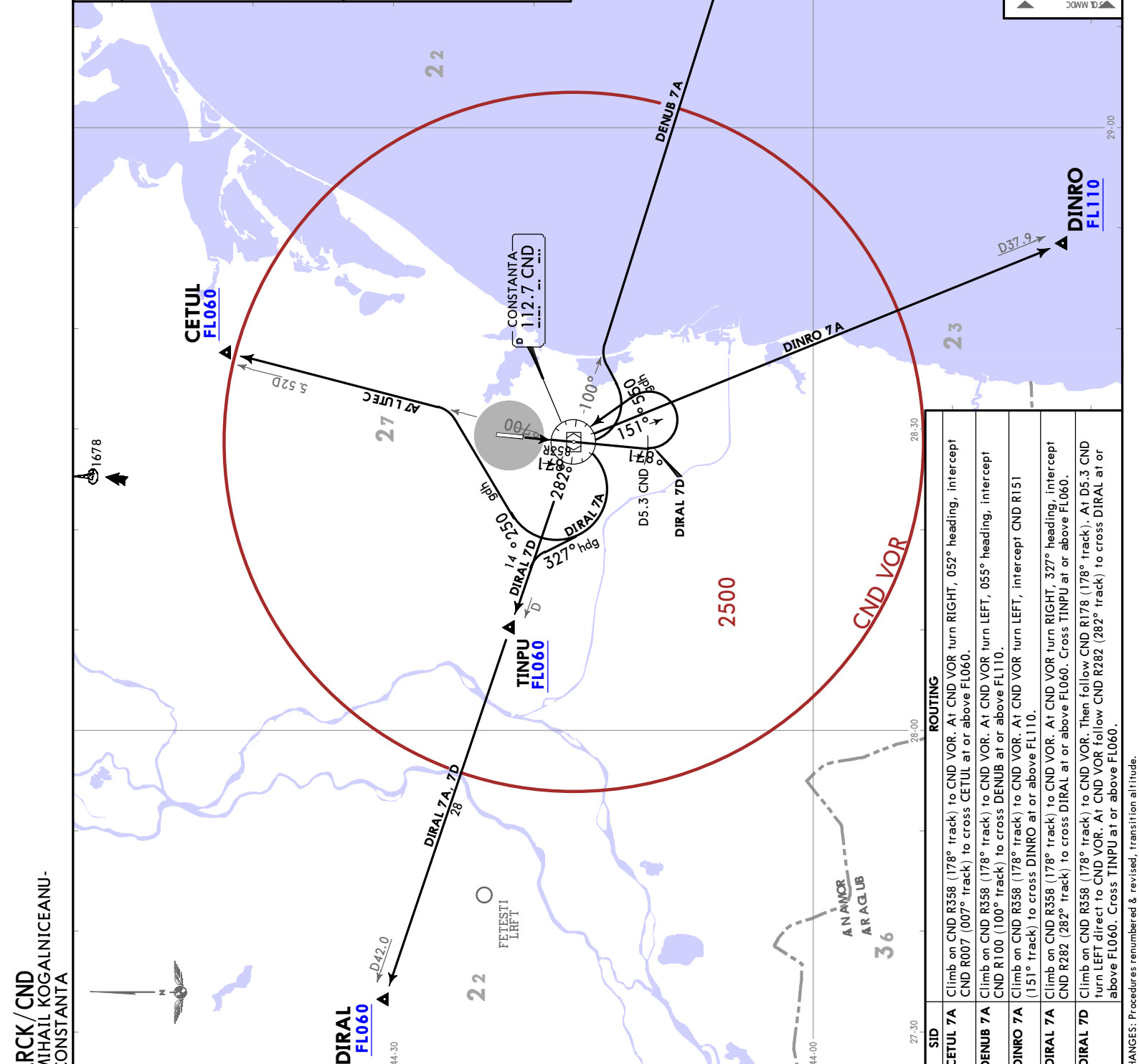
CETUL 7A [CETU7A]
DENUB 7A [DENU7A]
DINRO 7A [DINR7A]
DIRAL 7A [DIRA7A]
DIRAL 7D [DIRA7D]

DEPARTURES (RWY 18)
CAT A, B, C & D

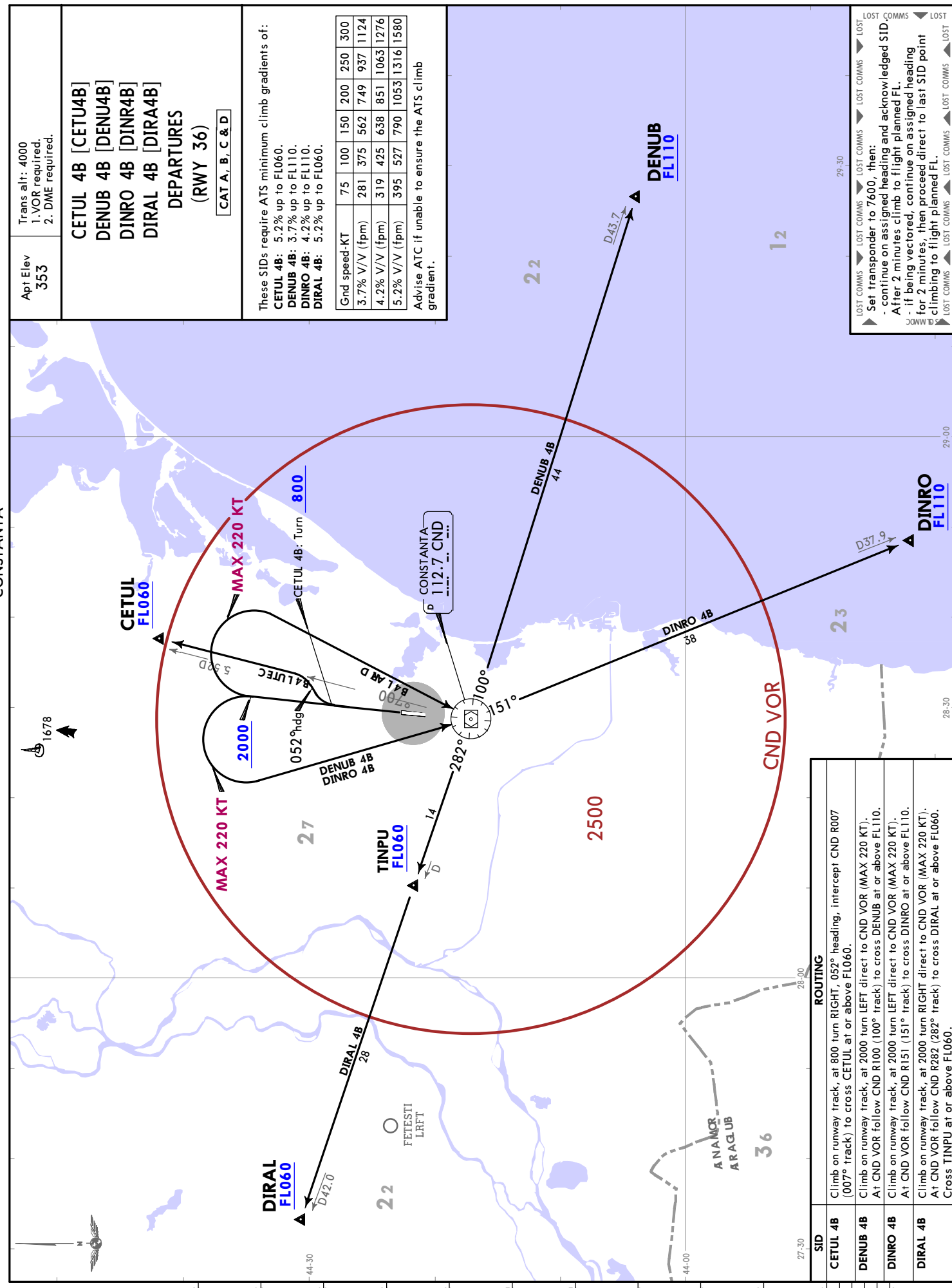
These SID's require ATS minimum climb gradients of:
DENUB 7A: 4.0% up to FL110.
DINRO 7A: 4.3% up to FL110.
DIRAL 7A: 6.3% up to FL060.
DIRAL 7D: 4.1% up to FL060.

Gnd speed-KT	75	100	150	200	250	300
4.0% V/V (fpm)	304	405	608	810	1013	1215
4.1% V/V (fpm)	311	415	623	830	1038	1246
4.3% V/V (fpm)	327	435	653	871	1089	1306
6.3% V/V (fpm)	478	638	957	1276	1595	1914

Advise ATC if unable to ensure the ATS climb gradient.



SID	ROUTING
CETUL 7A	Climb on CND R358 (178° track) to CND VOR. At CND VOR turn RIGHT, 052° heading, intercept CND R007 (007° track) to cross CETUL at or above FL060.
DENUB 7A	Climb on CND R358 (178° track) to CND VOR. At CND VOR turn LEFT, 055° heading, intercept CND R100 (100° track) to cross DENUB at or above FL110.
DINRO 7A	Climb on CND R358 (178° track) to CND VOR. At CND VOR turn LEFT, intercept CND R151 (151° track) to cross DINRO at or above FL110.
DIRAL 7A	Climb on CND R358 (178° track) to CND VOR. At CND VOR turn RIGHT, 327° heading, intercept CND R282 (282° track) to cross DIRAL at or above FL060. Cross TINPU at or above FL060.
DIRAL 7D	Climb on CND R358 (178° track) to CND VOR. Then follow CND R178 (178° track). At D5.3 CND turn LEFT direct to CND VOR. At CND VOR follow CND R282 (282° track) to cross DIRAL at or above FL060. Cross TINPU at or above FL060.



Trans alt: 4000
 1. VOR required.
 2. DME required.

CETUL 4B [CETU4B]
DENUB 4B [DENU4B]
DINRO 4B [DINR4B]
DIRAL 4B [DIRA4B]
DEPARTURES
(RWY 36)
CAT A, B, C & D

These SIDs require ATS minimum climb gradients of:
CETUL 4B: 5.2% up to FLO60.
DENUB 4B: 3.7% up to FL110.
DINRO 4B: 4.2% up to FL110.
DIRAL 4B: 5.2% up to FLO60.

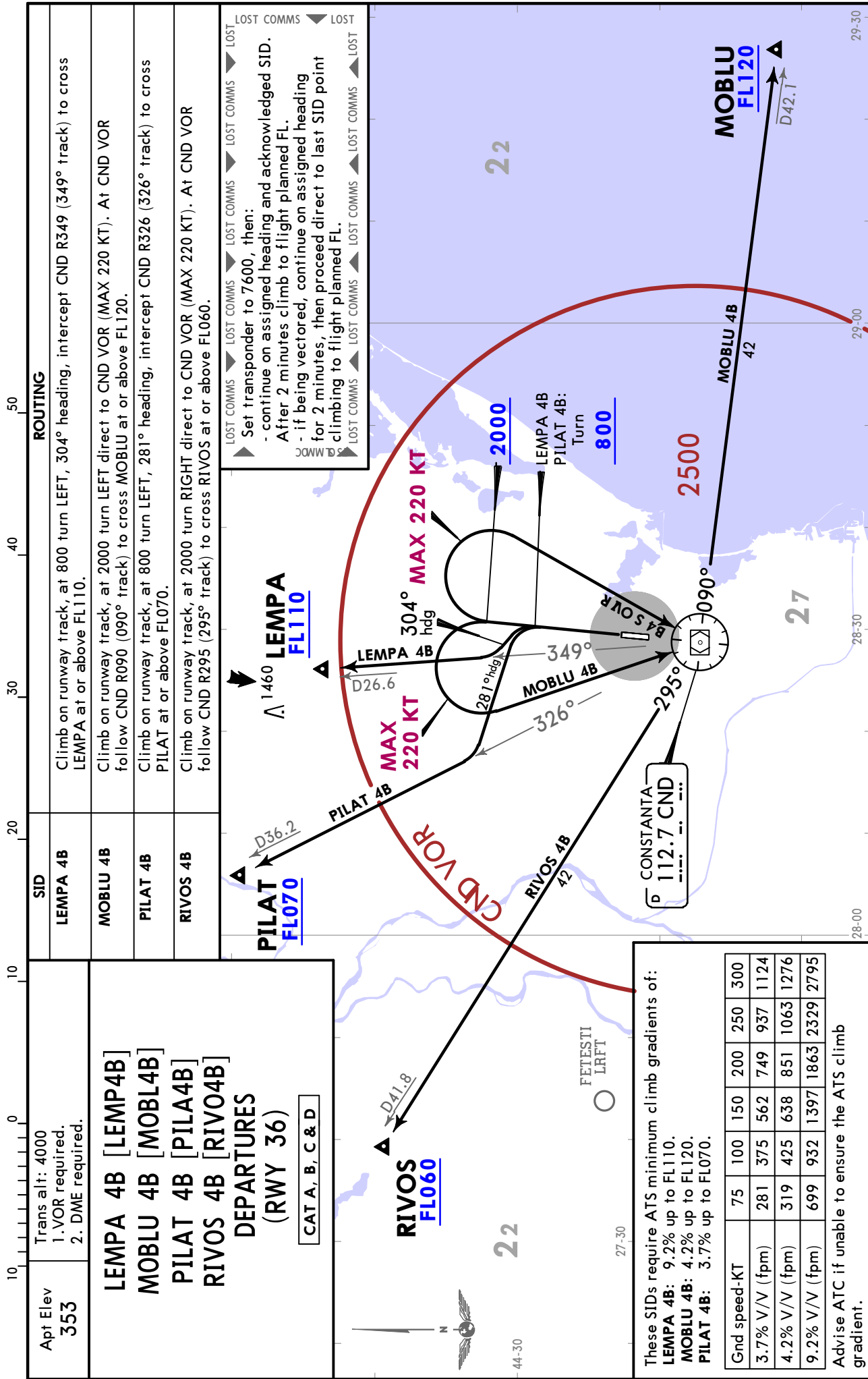
Gnd speed-KT	75	100	150	200	250	300
3.7% V/V (fpm)	281	375	562	749	937	1124
4.2% V/V (fpm)	319	425	638	851	1063	1276
5.2% V/V (fpm)	395	527	790	1053	1316	1580

Advise ATC if unable to ensure the ATS climb gradient.

SID	ROUTING
CETUL 4B	Climb on runway track, at 800 turn RIGHT, 052° heading, intercept CND R007 (007° track) to cross CETUL at or above FLO60.
DENUB 4B	Climb on runway track, at 2000 turn LEFT direct to CND VOR (MAX 220 KT). At CND VOR follow CND R100 (100° track) to cross DENUB at or above FL110.
DINRO 4B	Climb on runway track, at 2000 turn LEFT direct to CND VOR (MAX 220 KT). At CND VOR follow CND R151 (151° track) to cross DINRO at or above FL110.
DIRAL 4B	Climb on runway track, at 2000 turn RIGHT direct to CND VOR (MAX 220 KT). At CND VOR follow CND R282 (282° track) to cross DIRAL at or above FLO60. Cross TINPU at or above FLO60.

LOST COMMS
 Set transponder to 7600, then:
 - continue on assigned heading and acknowledged SID
 - After 2 minutes climb to flight planned FL.
 - if being vectored, continue on assigned heading for 2 minutes, then proceed direct to last SID point climbing to flight planned FL.
 LOST COMMS

LRCK/CND MIHAIL KOGALNICEANU- CONSTANTA



LRCK/CND

Apt Elev **353'**
N44 21.7 E028 29.3

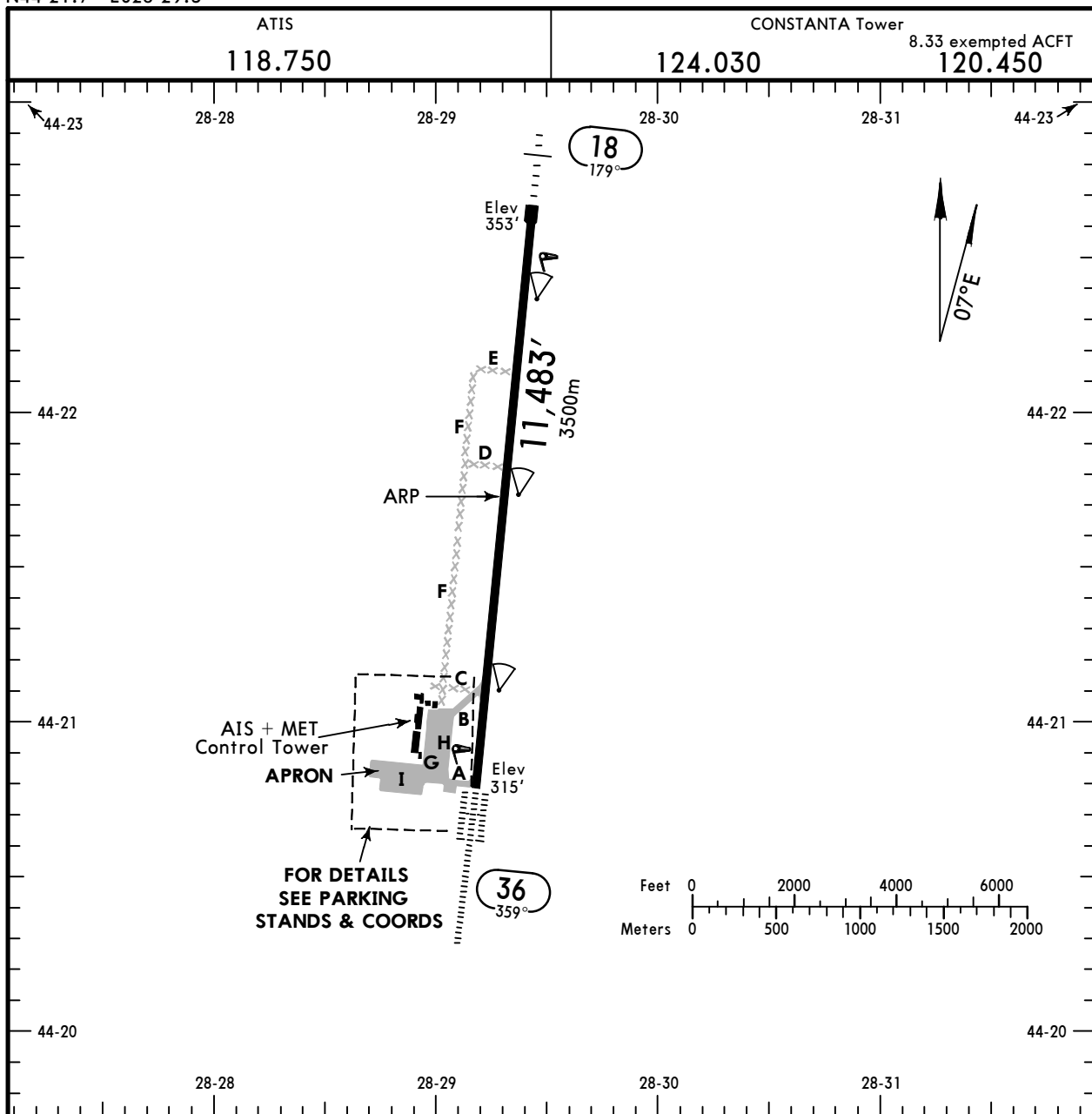
JEPPESEN

CONSTANTA, ROMANIA

21 JUL 23

10-9

MIHAIL KOGALNICEANU-CONSTANTA



ADDITIONAL RUNWAY INFORMATION

RWY		USABLE LENGTHS			WIDTH
		Threshold	Landing Beyond Glide Slope	TAKE-OFF	
18	HIRL (60m) CL (30m) ① HIALS PAPI-L (angle 3.0°) OFZ RVR				148' 45m
36	HIRL (60m) CL (30m) ② HIALS-II TDZ PAPI-L (angle 3.0°) RVR		10,450' 3185m	③	

- ① length 420m
- ② length 896m
- ③ TAKE-OFF RUN AVAILABLE
RWY 36: From rwy head 11,483' (3500m)
twy B int 9350' (2850m)

Std/State		TAKE-OFF			
Low Visibility Procedures required		RCLM or RL or CL	RL or CL	Adequate Vis Ref	
Approval for Low Visibility Take-off required				DAY	NIGHT
RCLM & RL & CL & RVR	RCLM & RL & RVR DAY	RCLM & RVR & RL or CL NIGHT			
R150m	R300m	R/V400m		R/V500m	NA

LRCK/CND

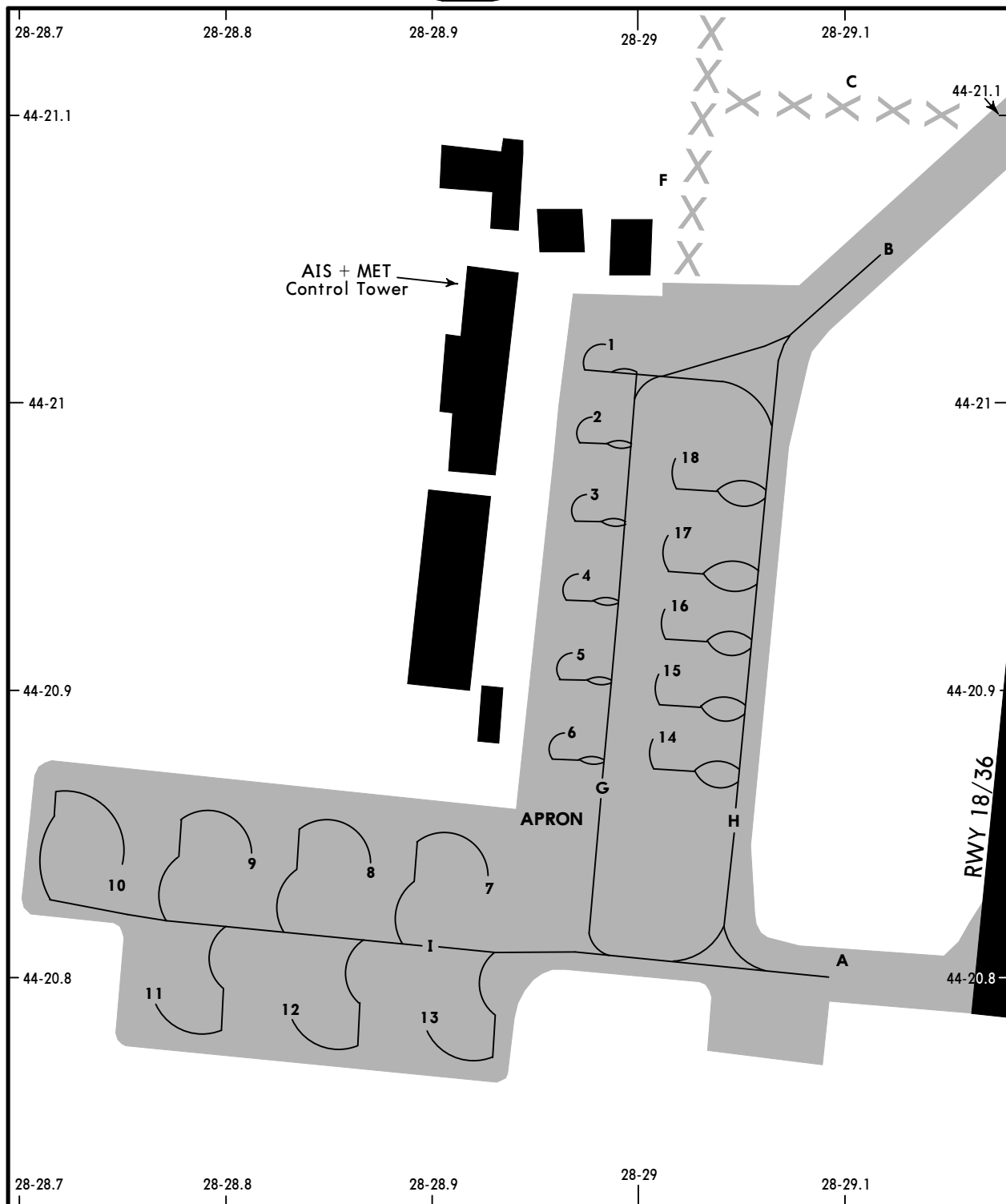
JEPPESEN

CONSTANTA, ROMANIA

21 JUL 23

10-9A

MIHAIL KOGALNICEANU-CONSTANTA



PARKING STAND COORDINATES

STAND No.	COORDINATES	STAND No.	COORDINATES
1 thru 3	N44 21.0 E028 29.0	14 thru 16	N44 20.9 E028 29.0
4 thru 6	N44 20.9 E028 29.0	17, 18	N44 21.0 E028 29.0
7, 8	N44 20.8 E028 28.9		
9 thru 12	N44 20.8 E028 28.8		
13	N44 20.8 E028 28.9		

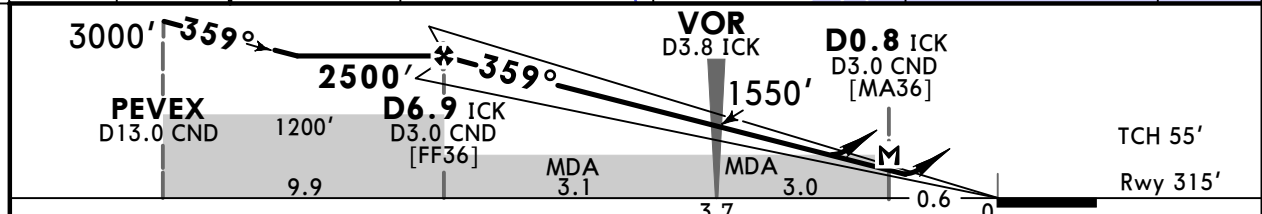
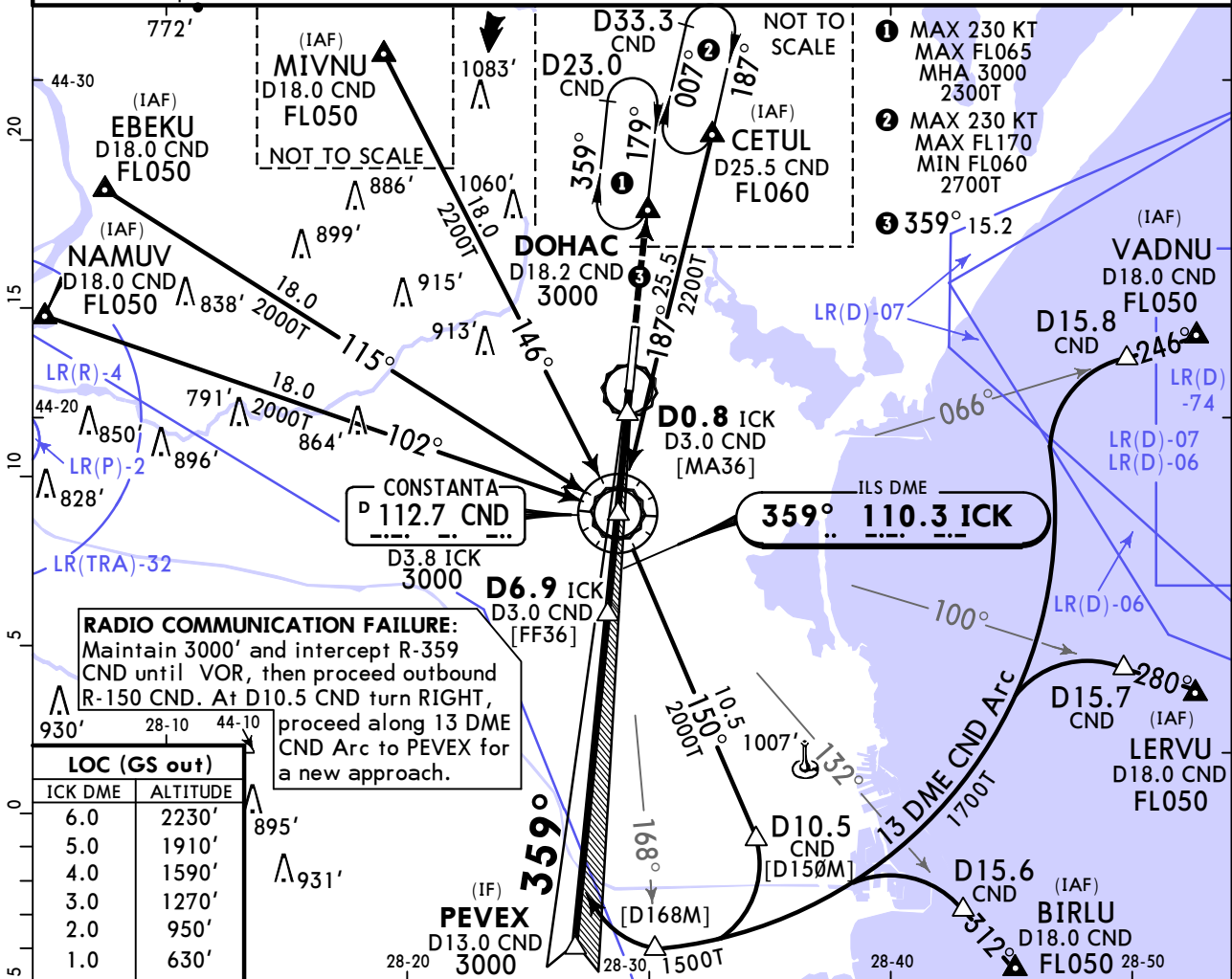
LRCK/CND

MIHAIL KOGALNICEANU-CONSTANTA

JEPPESEN CONSTANTA, ROMANIA
11-1 30 JUN 23
Eff 13 Jul

ILS Rwy 36

ATIS	CONSTANTA Approach			CONSTANTA Tower		<div style="border: 1px solid black; border-radius: 50%; width: 60px; height: 60px; margin: 0 auto; display: flex; align-items: center; justify-content: center;">2500</div> <p style="text-align: center; margin-top: 10px;">MSA CND VOR</p>
118.750	122.905	127.350	124.030	120.450	(8.33 exempted ACFT)	
LOC ICK 110.3	Final Apch Crs 359°	D6.9 ICK 2500' (2185')	ILS DA(H) 515' (200')	Apt Elev 353'	Rwy 315'	
<p>MISSED APCH: Follow R-359 CND VOR to DOHAC climbing to 3000' and hold or follow ATC instructions.</p>						
Alt Set: hPa		Rwy Elev: 11 hPa		Trans level: By ATC		Trans alt: 4000'
VOR DME required.						



Gnd speed-Kts	70	90	100	120	140	160	HTALS-II PAPI	CND 112.7 to DOHAC R-359	3000' ↑
GS	3.00°	372	478	531	637	743			
MAP at D0.8 ICK/D3.0 CND									
D6.9 ICK/D3.0 CND to MAP	6.1	5:14	4:04	3:40	3:03	2:37	2:17		

	STRAIGHT-IN LANDING				CIRCLE-TO-LAND			
	ILS		LOC (GS out)		LOC (GS out)		LOC (GS out)	
	DA(H) 515' (200')		DA/MDA(H) 600' (285')		DA/MDA(H) 600' (285')		DA/MDA(H) 600' (285')	
	TDZ or CL out		ALS out		TDZ or CL out		ALS out	
A								
B	R550m	1 R550m	R1200m	3 R650m	1 3 R650m	R1400m	Max Kts	MDA(H)
C							100	760' (407') V1500m
D							135	860' (507') V1600m
							180	1400' (1047') V2400m
							205	1440' (1087') V3600m

1 R750m when a Flight Director or Autopilot or HUDLS to DA is not used. 2 VNAV DA(H) in lieu of MDA(H) depends on operator policy. 3 R750m for CDFA 2D operations.

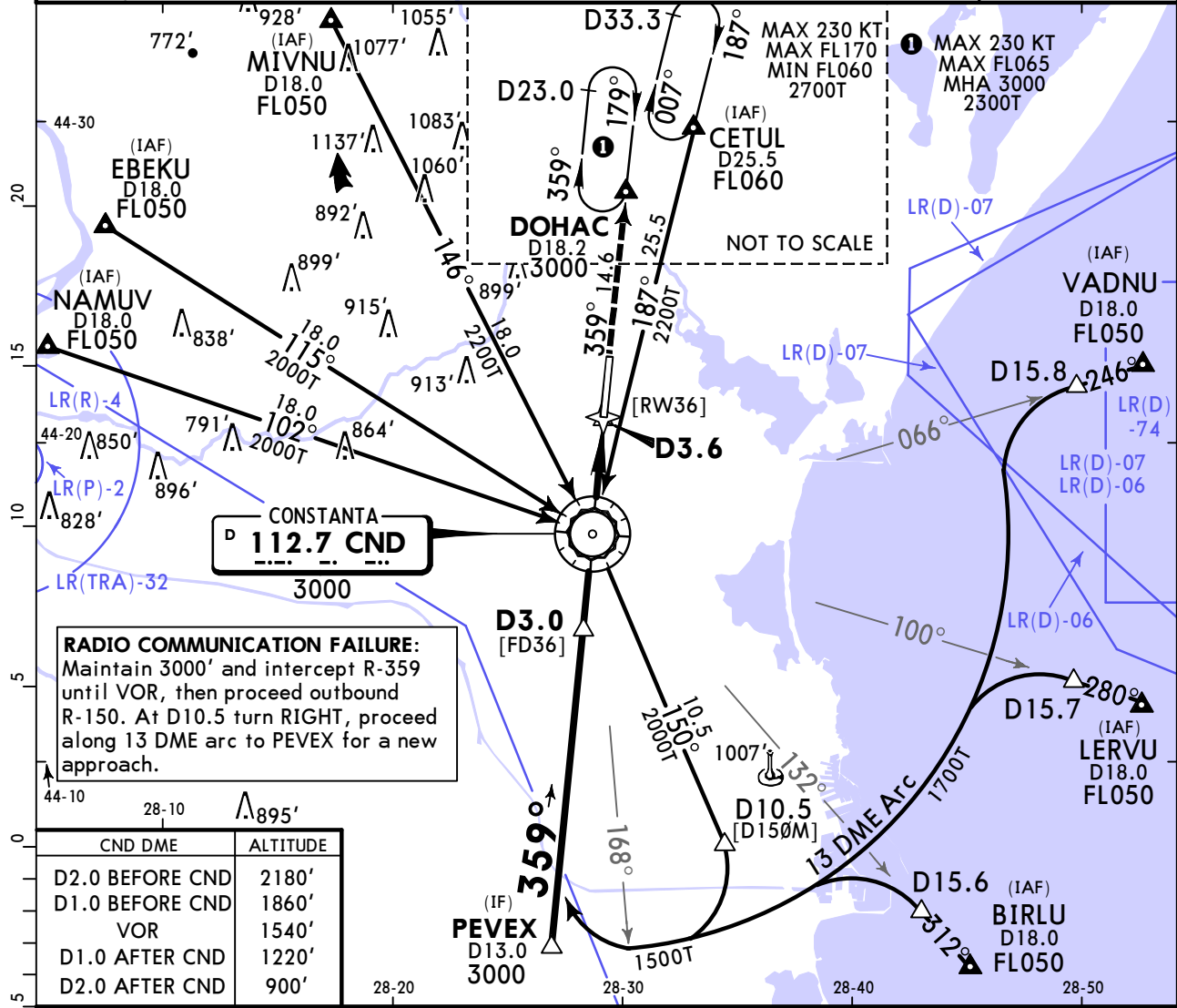
CHANGES: Procedure revised, EASA update. © JEPPESEN, 1997, 2023. ALL RIGHTS RESERVED.

LRCK/CND MIHAIL KOGALNICEANU-CONSTANTA

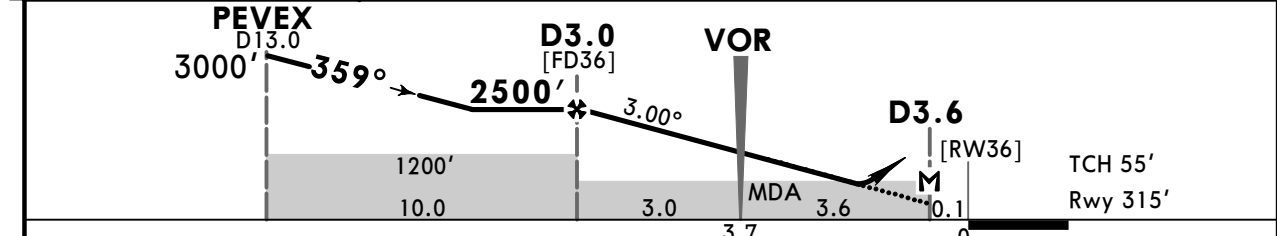


JEPPESEN CONSTANTA, ROMANIA
 30 JUN 23
Eff 13 Jul
VOR Rwy 36

BRIEFING STRIP™	ATIS 118.750	CONSTANTA Approach 122.905 127.350		CONSTANTA Tower 124.030 120.450 (8.33 exempted ACFT)		2500
	VOR CND 112.7	Final Apch Crs 359°	D3.0 2500' (2185')	DA/MDA(H) 680' (365')	Apt Elev 353' Rwy 315'	
	MISSED APCH: Follow R-359 to DOHAC climbing to 3000' and hold or follow ATC instructions.					
Alt Set: hPa		Rwy Elev: 11 hPa	Trans level: By ATC		Trans alt: 4000'	
DME required.						MSA CND VOR



CND DME	ALTITUDE
D2.0 BEFORE CND	2180'
D1.0 BEFORE CND	1860'
VOR	1540'
D1.0 AFTER CND	1220'
D2.0 AFTER CND	900'



Gnd speed-Kts	70	90	100	120	140	160	HIALS-II PAPI	CND 112.7 to DOHAC R-359	3000'
Descent Angle 3.00°	372	478	531	637	743	849			
MAP at D3.6	6.6	5:39	4:24	3:58	3:18	2:50			

PANS OPS	Std/State		STRAIGHT-IN LANDING CDFA		CIRCLE-TO-LAND	
			DA/MDA(H) 680' (365')			
			TDZ or CL out		ALS out	
	A				R1500m	Max Kts 100
B					135	860' (507') V1600m
C	R1000m		R1000m		180	1400' (1047') V2400m
D				R1700m	205	1440' (1087') V3600m

Chart changes since cycle 15-2023

ADD = added chart, REV = revised chart, DEL = deleted chart.

ACT	PROCEDURE IDENT	INDEX	REV DATE	EFF DATE
CONSTANTA, (MIHAIL KOGALNICEANU-CONSTANTA - LRCK)				

TERMINAL CHART CHANGE NOTICES

No Chart Change Notices for Airport LRCK