

## List of pages in this Trip Kit

Trip Kit Index

Airport Information For LRFT

Terminal Charts For LRFT

Revision Letter For Cycle 16-2023

Change Notices

Notebook

## General Information

Location: FETESTI ROU  
ICAO: LRFT  
Lat/Long: N44° 23.53', E027° 43.62'  
Elevation: 183 ft

Airport Use: Military  
Daylight Savings: Observed  
UTC Conversion: -2:00 = UTC  
Magnetic Variation: 5.0° E

Fuel Types: Jet A-1  
Customs: No  
Airport Type: IFR  
Landing Fee: No  
Control Tower: Yes  
Jet Start Unit: No  
LLWS Alert: No  
Beacon: No

Sunrise: 0405 Z  
Sunset: 1554 Z

## Runway Information

Runway: 18  
Length x Width: 8202 ft x 148 ft  
Surface Type: concrete  
TDZ-Elev: 183 ft  
Lighting: Edge, ALS  
Stopway: 492 ft

Runway: 36  
Length x Width: 8202 ft x 148 ft  
Surface Type: concrete  
TDZ-Elev: 173 ft  
Lighting: Edge, ALS  
Stopway: 492 ft

## Communication Information

ATIS: 122.525 Military  
Rubin Tower: 23.285 Military  
Rubin Tower: 122.100  
Rubin Tower: 27.845 Secondary Military  
Rubin Tower: 119.325 Secondary  
Rubin Ground: 25.142 Military  
Rubin Ground: 119.325 Secondary

Rubin Ground: 122.100  
Rubin Ground: 28.107 Secondary Military  
Rubin Approach: 30.962 Military  
Rubin Approach: 120.725  
Rubin Information: 130.800  
Rubin Information: 24.060 Military  
Rubin Control: 130.800  
Rubin Control: 35.662 Military  
Rubin Control: 119.725  
Rubin Control: 118.375  
Rubin Control: 35.717 Military

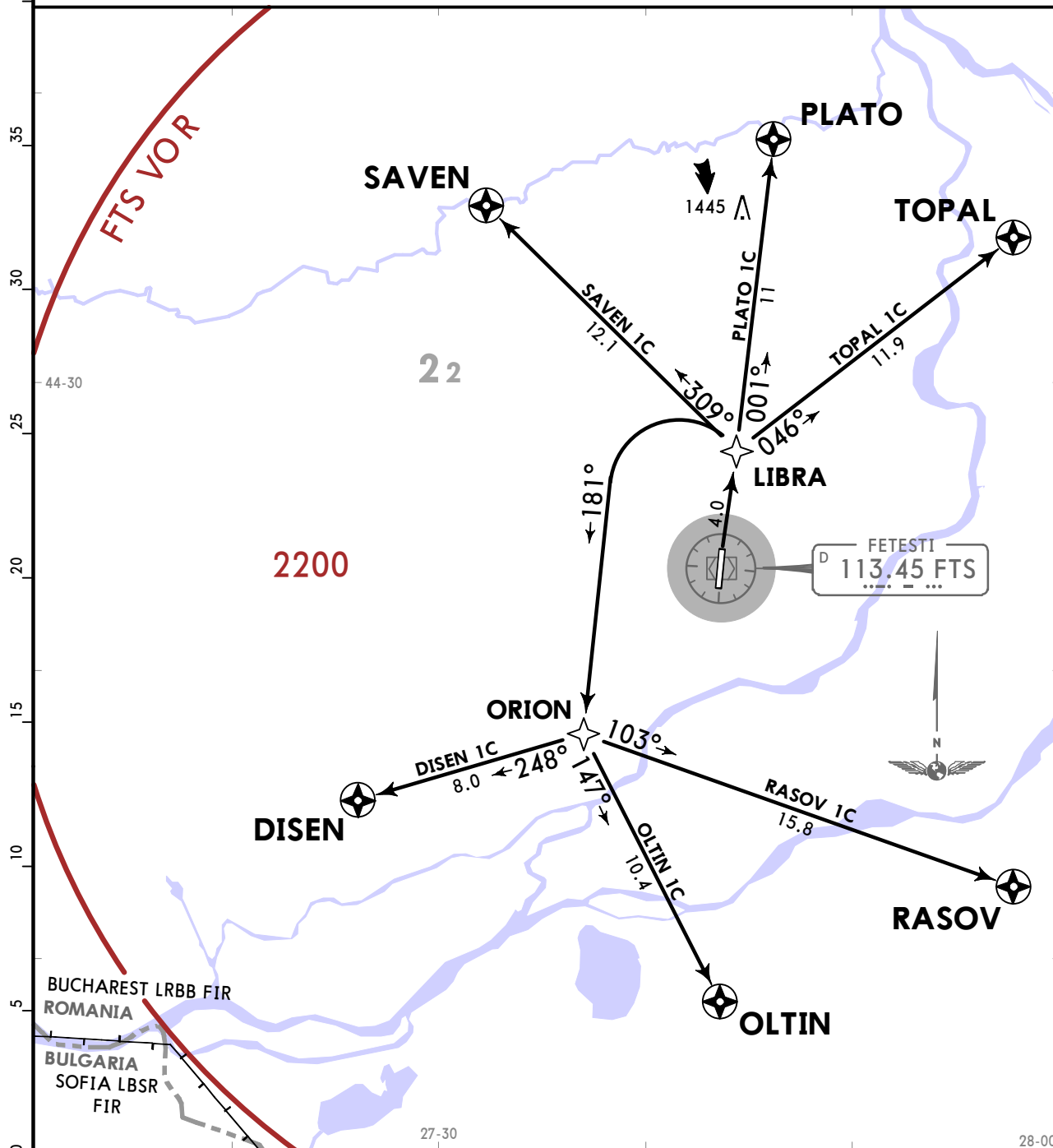
**LRFT**  
**FETESTI**

**JEPPESEN**  
18 MAR 22 **10-3** Eff 24 Mar

**FETESTI, ROMANIA**  
**RNAV SID**

Apt Elev  
**183**  
Trans alt: 4000

**DISEN 1C [DISE1C], OLTIN 1C [OLTI1C]**  
**PLATO 1C [PLAT1C], RASOV 1C [RASO1C]**  
**SAVEN 1C [SAVE1C], TOPAL 1C [TOPA1C]**  
**RNAV DEPARTURES**  
**(RWY 36)**



SID	ROUTING
<b>DISEN 1C</b>	Climb on RWY heading to LIBRA, turn LEFT, 181° track, climbing FL050 to ORION, turn RIGHT, 248° track to DISEN.
<b>OLTIN 1C</b>	Climb on RWY heading to LIBRA, turn LEFT, 181° track, climbing FL050 to ORION, turn LEFT, 147° track to OLTIN.
<b>PLATO 1C</b>	Climb on RWY heading to LIBRA, 001° track, climbing to FL050 to PLATO.
<b>RASOV 1C</b>	Climb on RWY heading to LIBRA, turn LEFT, 181° track, climbing FL050 to ORION, turn LEFT, 103° track to RASOV.
<b>SAVEN 1C</b>	Climb on RWY heading to LIBRA, turn LEFT, 309° track, climbing to FL050 to SAVEN.
<b>TOPAL 1C</b>	Climb on RWY heading to LIBRA, turn RIGHT, 046° track, climbing to FL050 to TOPAL.

CHANGES: New procedures at this airport.

© JEPPESEN, 2022. ALL RIGHTS RESERVED.

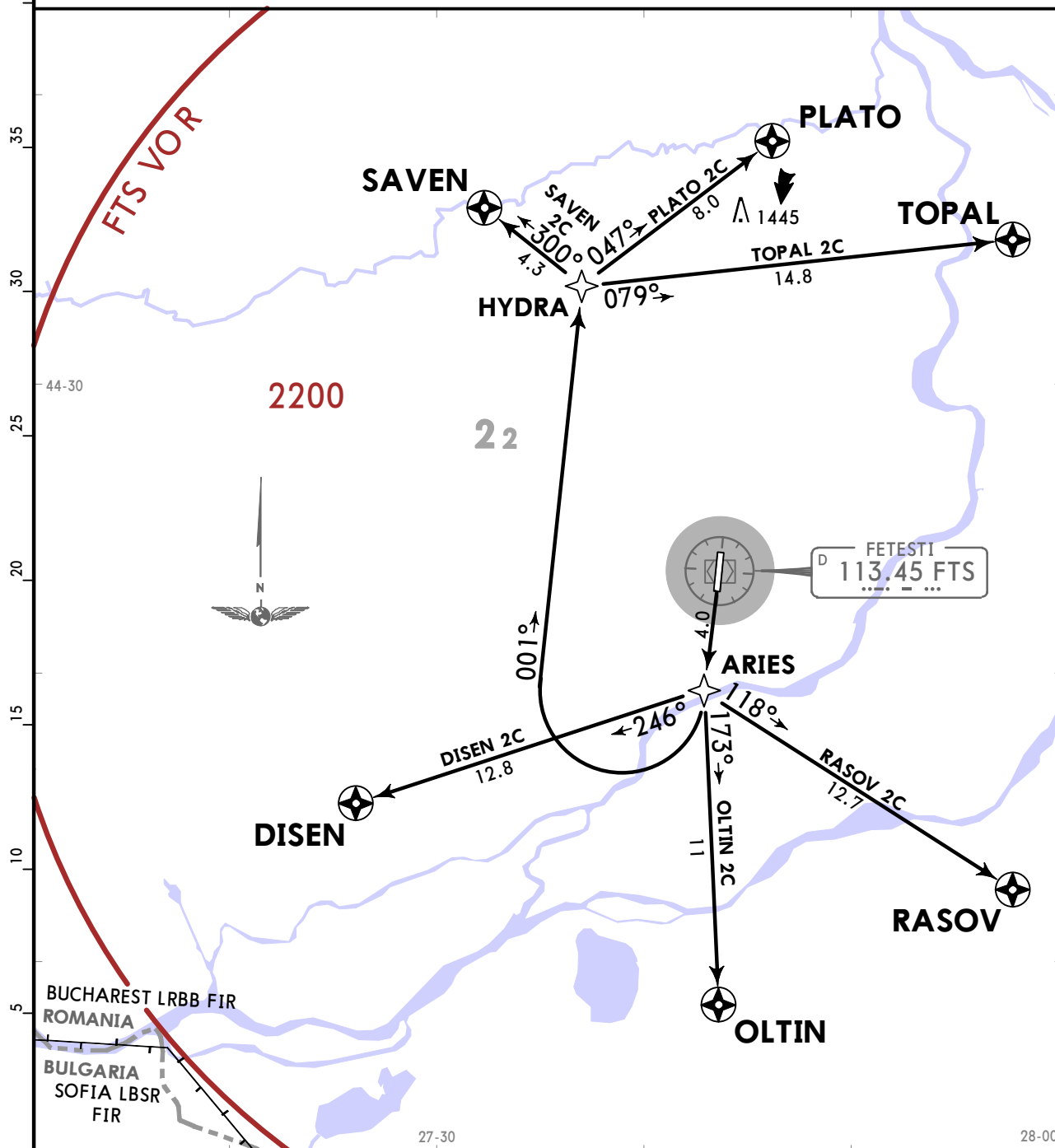
LRFT  
FETESTI

JEPPESEN  
18 MAR 22 (10-3A) Eff 24 Mar

FETESTI, ROMANIA  
RNAV SID

Apt Elev  
183  
Trans alt: 4000

DISEN 2C [DISE2C], OLTIN 2C [OLTI2C]  
PLATO 2C [PLAT2C], RASOV 2C [RASO2C]  
SAVEN 2C [SAVE2C], TOPAL 2C [TOPA2C]  
RNAV DEPARTURES  
(RWY 18)



SID	ROUTING
DISEN 2C	Climb on RWY heading to ARIES, turn RIGHT, 246° track, climbing to FL050 to DISEN.
OLTIN 2C	Climb on RWY heading to ARIES, turn LEFT, 173° track, climbing to FL050 to OLTIN.
PLATO 2C	Climb on RWY heading to ARIES, turn RIGHT, 001° track, climbing to FL050 to HYDRA, turn RIGHT, 047° track to PLATO.
RASOV 2C	Climb on RWY heading to ARIES, turn LEFT, 118° track, climbing to FL050 to RASOV.
SAVEN 2C	Climb on RWY heading to ARIES, turn RIGHT, 001° track, climbing to FL050 to HYDRA, turn LEFT, 300° track to SAVEN.
TOPAL 2C	Climb on RWY heading to ARIES, turn RIGHT, 001° track, climbing to FL050 to HYDRA, turn RIGHT, 079° track to TOPAL.

CHANGES: New procedures at this airport.

© JEPPESEN, 2022. ALL RIGHTS RESERVED.

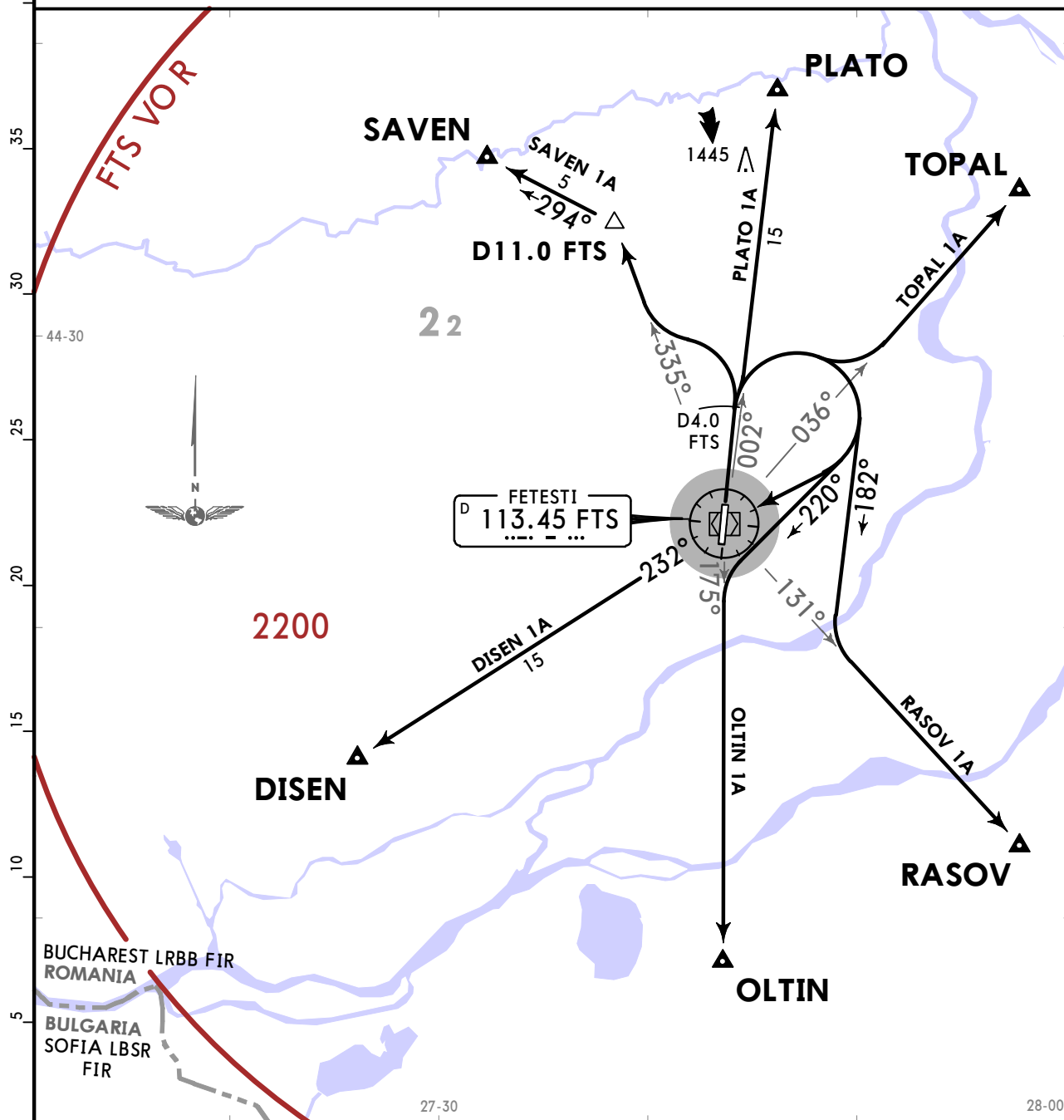
**LRFT**  
**FETESTI**

**JEPPESEN**  
18 MAR 22 **(10-3B)** Eff 24 Mar

**FETESTI, ROMANIA**  
**SID**

Apt Elev  
**183**  
Trans alt: 4000  
VOR azimuth required

**DISEN 1A [DISE1A], OLTIN 1A [OLTI1A]**  
**PLATO 1A [PLAT1A], RASOV 1A [RASO1A]**  
**SAVEN 1A [SAVE1A], TOPAL 1A [TOPA1A]**  
**DEPARTURES**  
**(RWY 36)**



SID	ROUTING
<b>DISEN 1A</b>	After take-off start turn at D4.0 FTS, turn RIGHT, climbing to FL050 to FTS VOR, intercept FTS R232 to DISEN.
<b>OLTIN 1A</b>	After take-off start turn at D4.0 FTS, turn RIGHT, 220° track, climbing to FL050, intercept FTS R175 to OLTIN.
<b>PLATO 1A</b>	After take-off start turn at D4.0 FTS, climb on FTS R002 to FL050 to PLATO.
<b>RASOV 1A</b>	After take-off start turn at D4.0 FTS, turn RIGHT, 182° track, climbing to FL050, intercept FTS R131 to RASOV.
<b>SAVEN 1A</b>	After take-off start turn at D4.0 FTS, turn LEFT climbing to FL050, intercept FTS R335, at D11.0 FTS turn LEFT, 294° track to SAVEN.
<b>TOPAL 1A</b>	After take-off start turn at D4.0 FTS, turn RIGHT, climbing to FL050, intercept FTS R036 to TOPAL.

CHANGES: New procedures at this airport.

© JEPPESEN, 2022. ALL RIGHTS RESERVED.

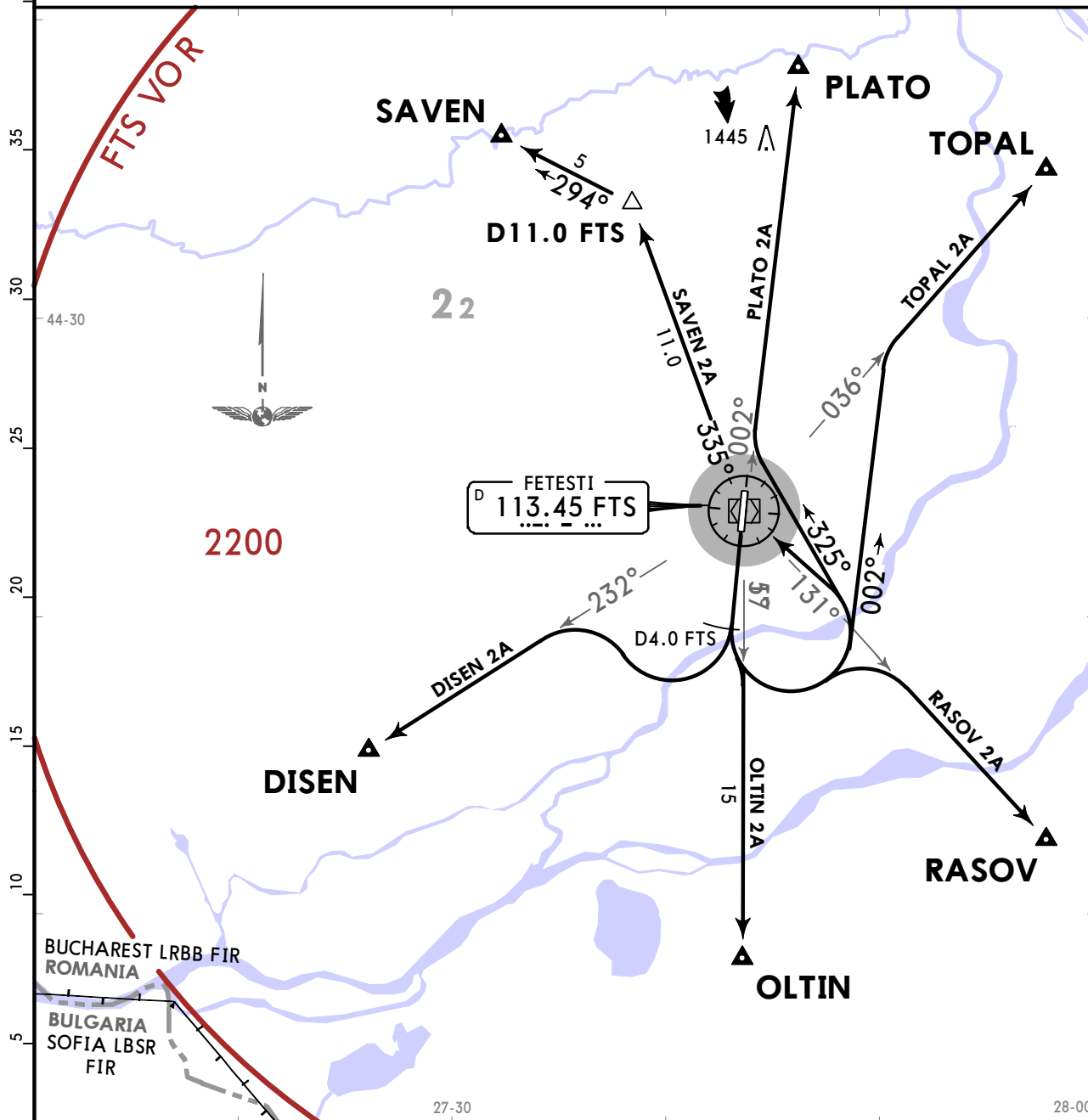
**LRFT**  
**FETESTI**

**JEPPESEN**  
18 MAR 22 **(10-3C)** **Eff 24 Mar**

**FETESTI, ROMANIA**  
**SID**

Apt Elev  
**183**  
Trans alt: 4000  
VOR azimuth required

**DISEN 2A [DISE2A], OLTIN 2A [OLTI2A]**  
**PLATO 2A [PLAT2A], RASOV 2A [RASO2A]**  
**SAVEN 2A [SAVE2A], TOPAL 2A [TOPA2A]**  
**DEPARTURES**  
**(RWY 18)**



SID	ROUTING
<b>DISEN 2A</b>	After take-off start turn at D4.0 FTS, turn RIGHT, climbing to FL050, intercept FTS R232 to DISEN.
<b>OLTIN 2A</b>	After take-off start turn at D4.0 FTS, turn LEFT, climbing to FL050, intercept FTS R175 to OLTIN.
<b>PLATO 2A</b>	After take-off start turn at D4.0 FTS, turn LEFT, 325° track, climbing to FL050, intercept FTS R002 to PLATO.
<b>RASOV 2A</b>	After take-off start turn at D4.0 FTS, turn LEFT, climbing to FL050, intercept FTS R131 to RASOV.
<b>SAVEN 2A</b>	After take-off start turn at D4.0 FTS, turn LEFT, climbing to FL050 to FTS VOR, intercept FTS R335, at D11.0 FTS turn LEFT, 294° track to SAVEN.
<b>TOPAL 2A</b>	After take-off start turn at D4.0 FTS, turn LEFT, climbing to FL050 on 002° track, intercept FTS R036 to TOPAL.

CHANGES: New procedures at this airport.

© JEPPESEN, 2022. ALL RIGHTS RESERVED.

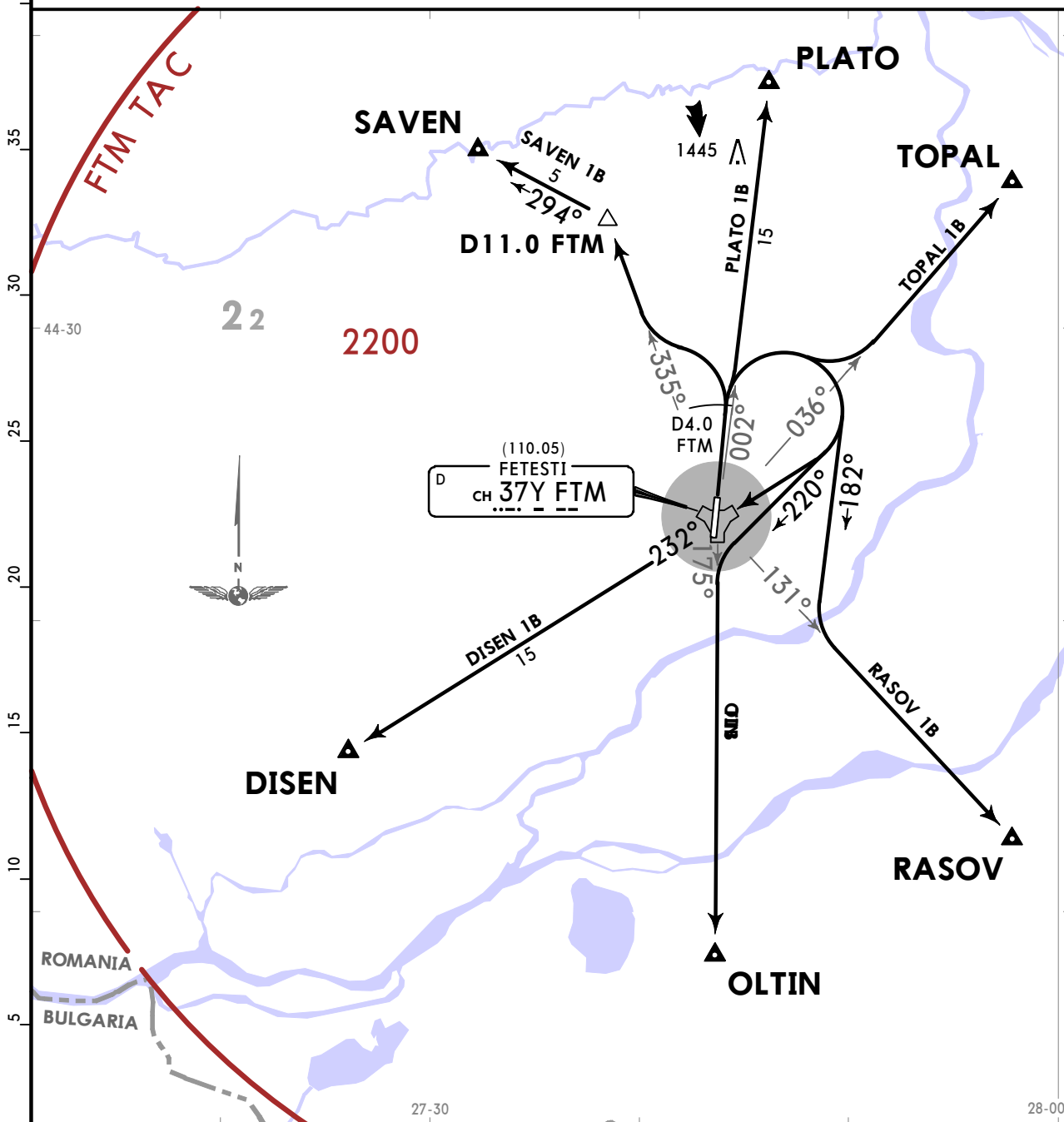
**LRFT**  
**FETESTI**

**JEPPESEN**  
1 JUL 22 (10-3D) Eff 14 Jul

**FETESTI, ROMANIA**  
**SID**

Apt Elev 183  
Trans alt: 4000  
TACAN azimuth required

**DISEN 1B [DISE1B], OLTIN 1B [OLTI1B]**  
**PLATO 1B [PLAT1B], RASOV 1B [RASO1B]**  
**SAVEN 1B [SAVE1B], TOPAL 1B [TOPA1B]**  
**DEPARTURES**  
**(RWY 36)**



SID	ROUTING
<b>DISEN 1B</b>	After take-off start turn at D4.0 FTM, turn RIGHT, climbing to FL050 to FTM TAC, intercept FTM R232 to DISEN.
<b>OLTIN 1B</b>	After take-off start turn at D4.0 FTM, turn RIGHT, 220° track, climbing to FL050, intercept FTM R175 to OLTIN.
<b>PLATO 1B</b>	After take-off start turn at D4.0 FTM, climb on FTM R002 to FL050 to PLATO.
<b>RASOV 1B</b>	After take-off start turn at D4.0 FTM, turn RIGHT, 182° track, climbing to FL050, intercept FTM R131 to RASOV.
<b>SAVEN 1B</b>	After take-off start turn at D4.0 FTM, turn LEFT, climbing to FL050, intercept FTM R335, at D11.0 FTM turn LEFT, 294° track to SAVEN.
<b>TOPAL 1B</b>	After take-off start turn at D4.0 FTM, turn RIGHT, climbing to FL050, intercept FTM R036 to TOPAL.

CHANGES: New procedures at this airport.

© JEPPESEN, 2022. ALL RIGHTS RESERVED.

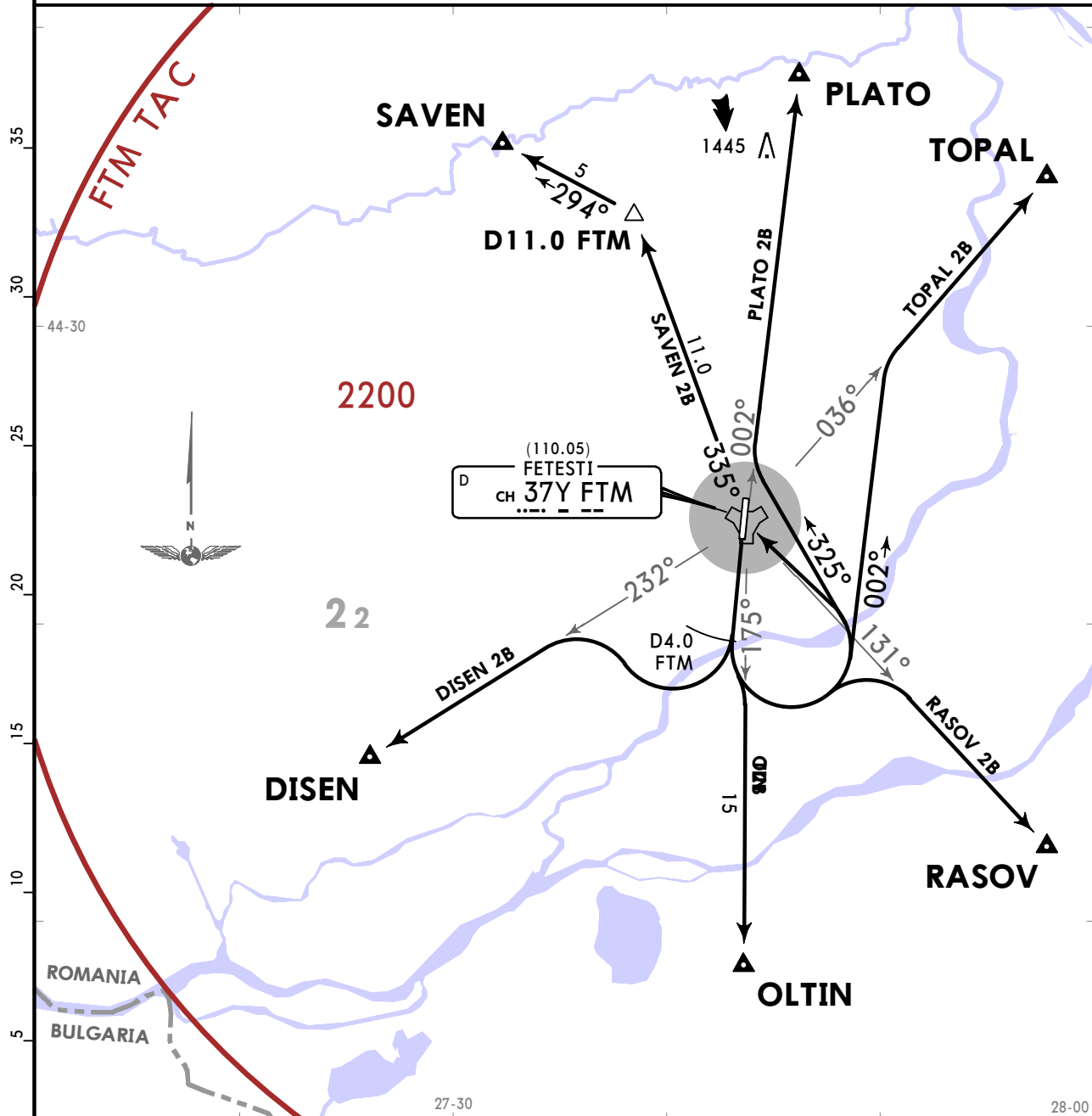
**LRFT**  
**FETESTI**

**JEPPESEN**  
1 JUL 22 **(10-3E)** **Eff 14 Jul**

**FETESTI, ROMANIA**  
**SID**

Apt Elev <b>183</b>	Trans alt: 4000 TACAN azimuth required
------------------------	-------------------------------------------

**DISEN 2B [DISE2B], OLTIN 2B [OLTI2B]**  
**PLATO 2B [PLAT2B], RASOV 2B [RASO2B]**  
**SAVEN 2B [SAVE2B], TOPAL 2B [TOPA2B]**  
**DEPARTURES**  
**(RWY 18)**



SID	ROUTING
<b>DISEN 2B</b>	After take-off start turn at D4.0 FTM, turn RIGHT, climbing to FL050, intercept FTM R232 to DISEN.
<b>OLTIN 2B</b>	After take-off start turn at D4.0 FTM, turn LEFT, climbing to FL050, intercept FTM R175 to OLTIN.
<b>PLATO 2B</b>	After take-off start turn at D4.0 FTM, turn LEFT, 325° track, climbing to FL050, intercept FTM R002 to PLATO.
<b>RASOV 2B</b>	After take-off start turn at D4.0 FTM, turn LEFT, climbing to FL050, intercept FTM R131 to RASOV.
<b>SAVEN 2B</b>	After take-off start turn at D4.0 FTM, turn LEFT, climbing to FL050 to FTM TAC, intercept FTM R335, at D11.0 FTM turn LEFT, 294° track to SAVEN.
<b>TOPAL 2B</b>	After take-off start turn at D4.0 FTM, turn LEFT, climbing to FL050 on 002° track, intercept FTM R036 to TOPAL.

CHANGES: New procedures at this airport.

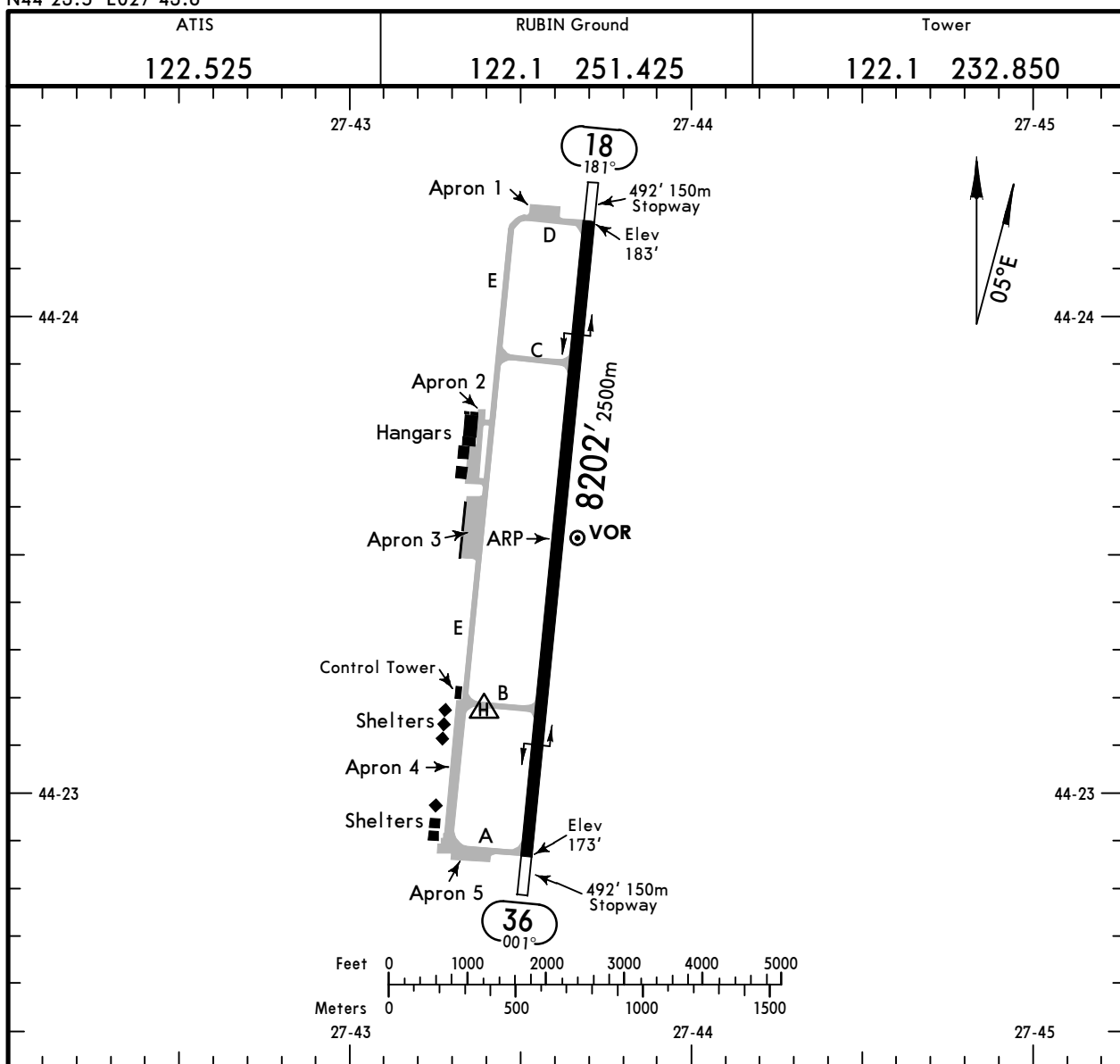
# LRFT

Apt Elev **183'**  
N44 23.5 E027 43.6

**JEPPESEN**  
18 MAR 22 **(10-9)** Eff 24 Mar

# FETESTI, ROMANIA

FETESTI



### ADDITIONAL RUNWAY INFORMATION

RWY		USABLE LENGTHS			
		LANDING BEYOND		TAKE-OFF	WIDTH
		Threshold	Glide Slope		
18	HIRL (60m) ① ALS-I REIL PAPI-L (angle 3.2°)		7169' 2185m	8694' 2650m	148' 45m
36	HIRL (60m) ① ALSF-I REIL PAPI-L (angle 3.0°)		7534' 2296m		

① Configuration unknown.

**Military**

# LRFT FETESTI



# FETESTI, ROMANIA

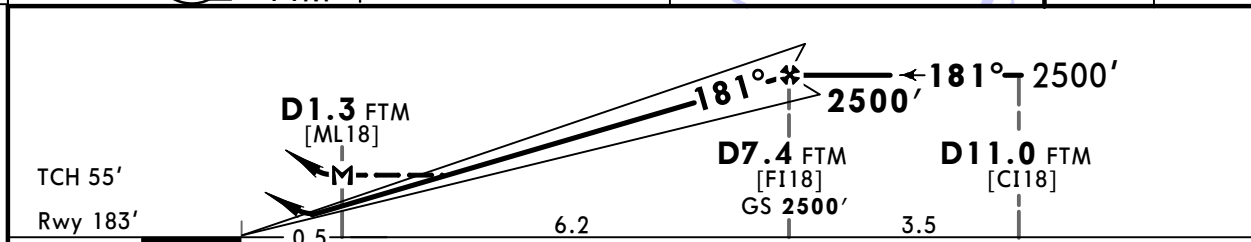
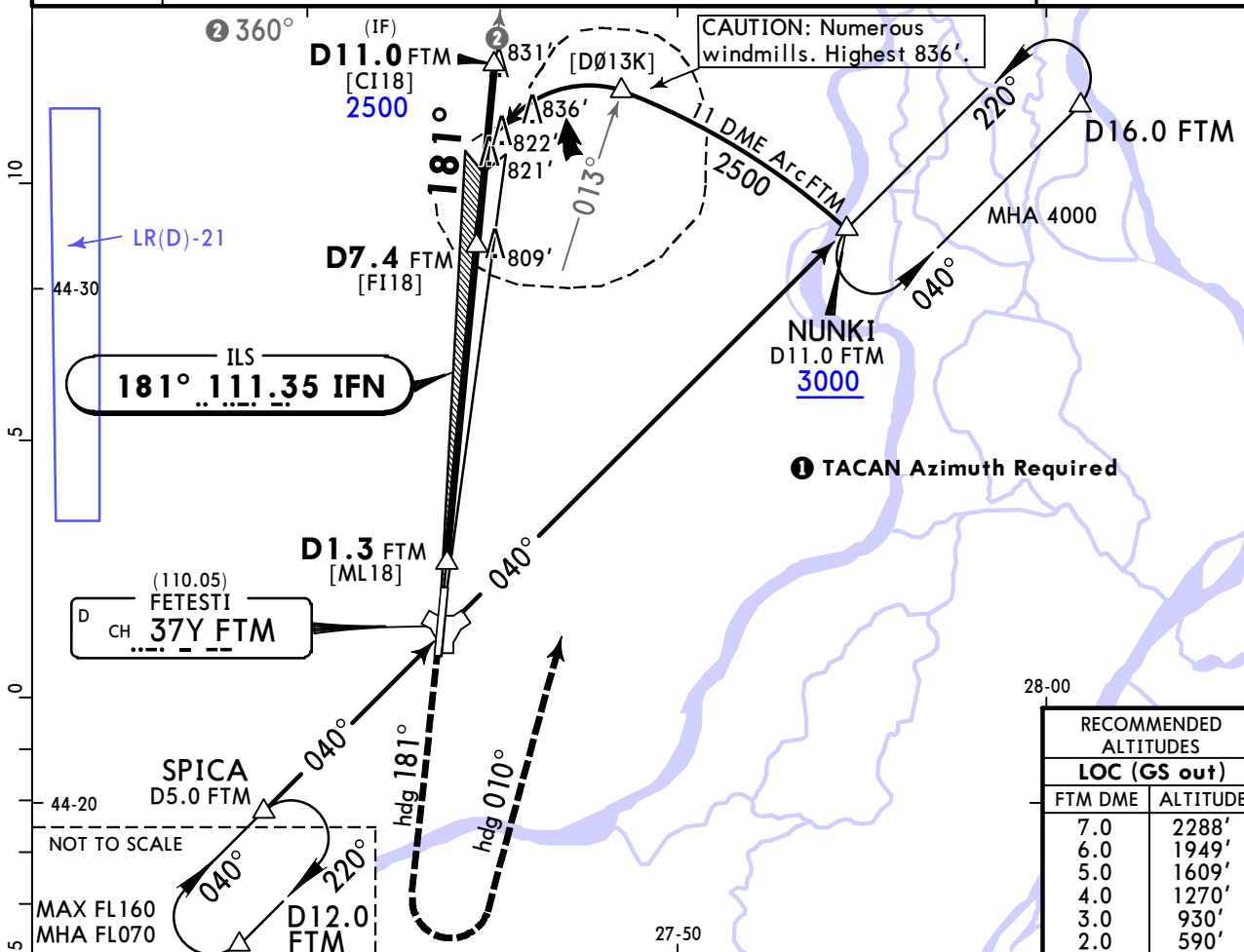
1 JUL 22

11-1

Eff 14 Jul

HI/LO ILS Rwy 18

ATIS 122.525		RUBIN Approach 120.725 309.625		RUBIN Tower 122.1 232.850		Ground 122.1 251.425	
LOC IFN <b>111.35</b>	Final Apch Crs <b>181°</b>	D7.4 FTM <b>2500'</b> (2317')		ILS DA(H) Refer to Minimums	Apt Elev 183'	Rwy 183'	
<b>MISSED APCH: Climb on RWY heading to 1500', then turn LEFT heading 010° climbing to 3000' to intercept R-040 FTM TACAN.</b>							
Alt Set: hPa      Rwy Elev: 7 hPa      Trans level: By ATC      Trans alt: 4000'							
TACAN required.							



Gnd speed-Kts	70	90	100	120	140	160		1500'	hdg 181°	3000'	hdg 010°
GS	3.20°	396	510	566	679	793	906	ALS-I	↑ on	LT	on
MAP at D1.3 FTM											

PANS OPS MIL	MILITARY STRAIGHT-IN LANDING				CIRCLE-TO-LAND			
	ILS		LOC (GS out)		ALS out		ALS out	
	FULL	Limited	ALS out	ALS out	Max Kts	MDA(H)		
A					100	690' (507') V1600m		
B	R550m	R750m	R1200m	R1000m	135	690' (507') V2000m		
C					180	790' (607') V2400m		
D	R800m	R1000m	R1600m	R1800m	205	890' (707') V4800m		
E					250	990' (807') V4800m		

CHANGES: New procedure.

© JEPPESEN, 2022. ALL RIGHTS RESERVED.

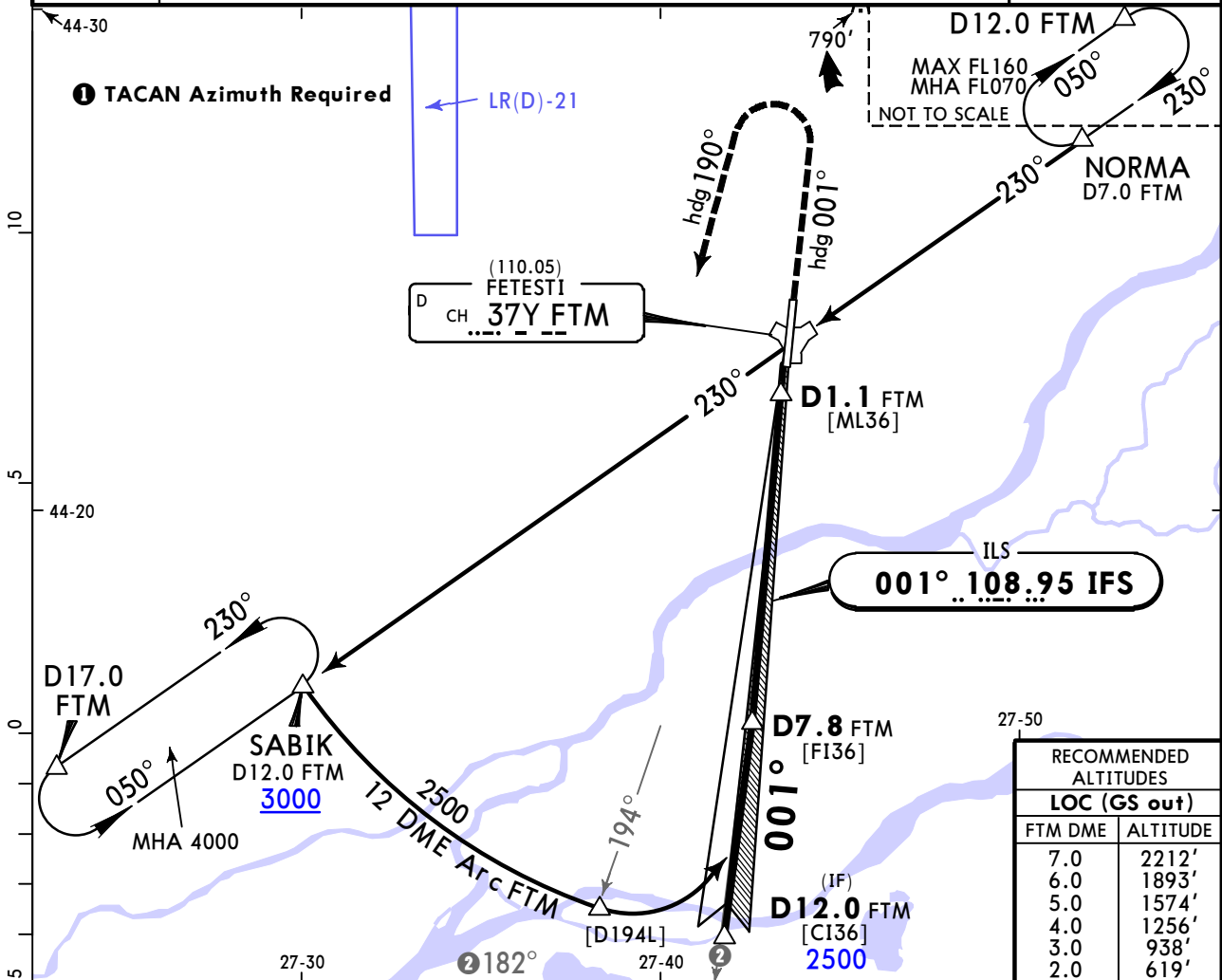
# LRFT FETESTI



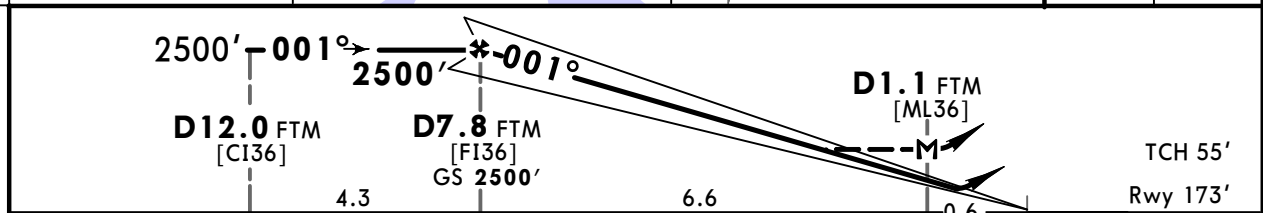
# FETESTI, ROMANIA

1 JUL 22 (11-2) Eff 14 Jul HI/LO ILS Rwy 36

ATIS 122.525		RUBIN Approach 120.725 309.625		RUBIN Tower 122.1 232.850		Ground 122.1 251.425	
LOC IFS <b>108.95</b>	Final Apch Crs <b>001°</b>	D7.8 FTM <b>2500'</b> (2327')		ILS DA(H) Refer to Minimums	Apt Elev 183' Rwy 173'		
<b>MISSED APCH: Climb on RWY heading to 1500', then turn LEFT heading 190° climbing to 3000' to intercept R-230 FTM TACAN.</b>						2200	
Alt Set: hPa		Rwy Elev: 6 hPa		Trans level: By ATC			
TACAN required.						MSA FTM TACAN	



RECOMMENDED ALTITUDES	
LOC (GS out)	
FTM DME	ALTITUDE
7.0	2212'
6.0	1893'
5.0	1574'
4.0	1256'
3.0	938'
2.0	619'



Gnd speed-Kts	70	90	100	120	140	160	ALSFI PAPI-L	1500'	hdg	3000'	hdg
GS	3.00°	372	478	531	637	743		849	↑	on 001°	←
MAP at D1.1 FTM											

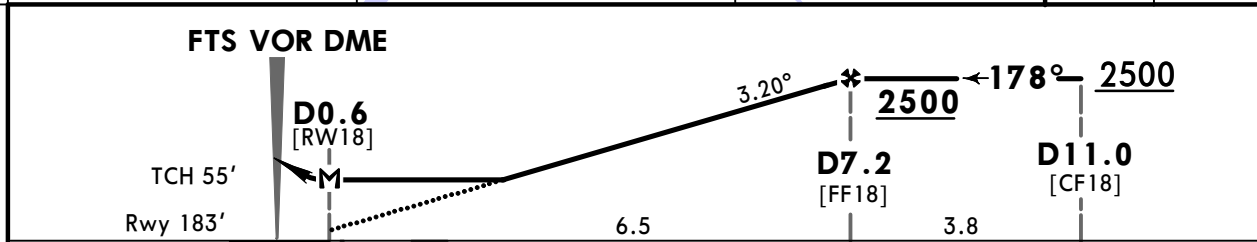
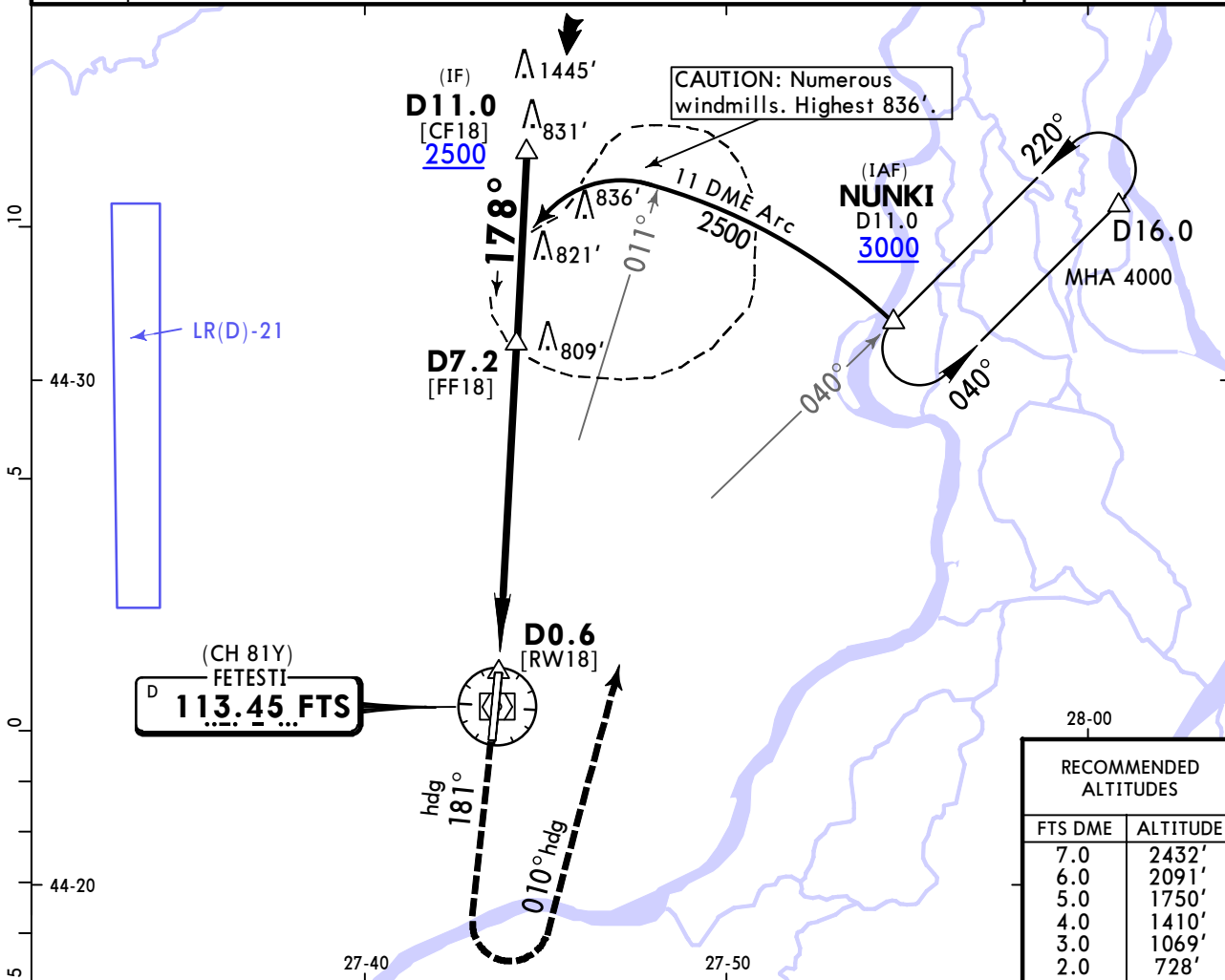
PANS OPS MIL	MILITARY STRAIGHT-IN LANDING				CIRCLE-TO-LAND				
	ILS			LOC (GS out)				Max Kts	MDA(H)
	FULL	Limited	ALS out	MDA(H) 600' (427')		ALS out			
A								100	680' (497') V1600m
B	R550m	R750m	R1200m	R1000m		R1600m		135	690' (507') V2000m
C								180	790' (607') V2400m
D	R800m	R1000m	R1600m	R1800m		R2500m		205	890' (707') V4800m
E								250	990' (807') V4800m

**LRFT**  
**FETESTI**

**JEPPESEN**  
18 MAR 22 **(13-1)** Eff 24 Mar

**FETESTI, ROMANIA**  
**VOR Rwy 18**

ATIS 122.525		RUBIN Approach 120.725 309.625		RUBIN Tower 122.1 232.850		Ground 122.1 251.425		
VOR DME FTS <b>113.45</b> (CH 81Y)	Final Apch Crs <b>178°</b>	<b>D7.2</b> <b>2500</b> (2317')	MDA(H) <b>610'</b> (427')	Apt Elev 183'	Rwy 183'	2200		
<b>MISSED APCH:</b> Climb on RWY heading to 1500', then turn LEFT heading 010° climbing to 3000' to intercept R-040 FTS VOR DME.								
Alt Set: hPa		Rwy Elev: 7 hPa		Trans level: By ATC				Trans alt: 4000'
DME required.						MSA FTS VOR DME		



Gnd speed-Kts	70	90	100	120	140	160	ALS-I PAPI-L	1500'	hdg	3000'	hdg
Descent Angle	3.20°	396	510	566	679	793		906	↑ on	181°	← on
MAP at D0.6											

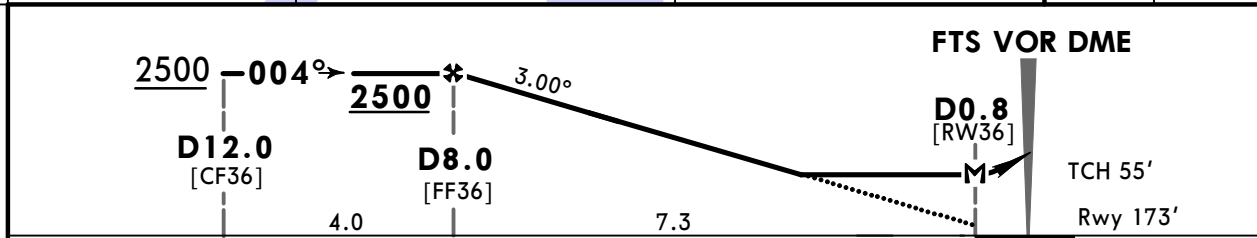
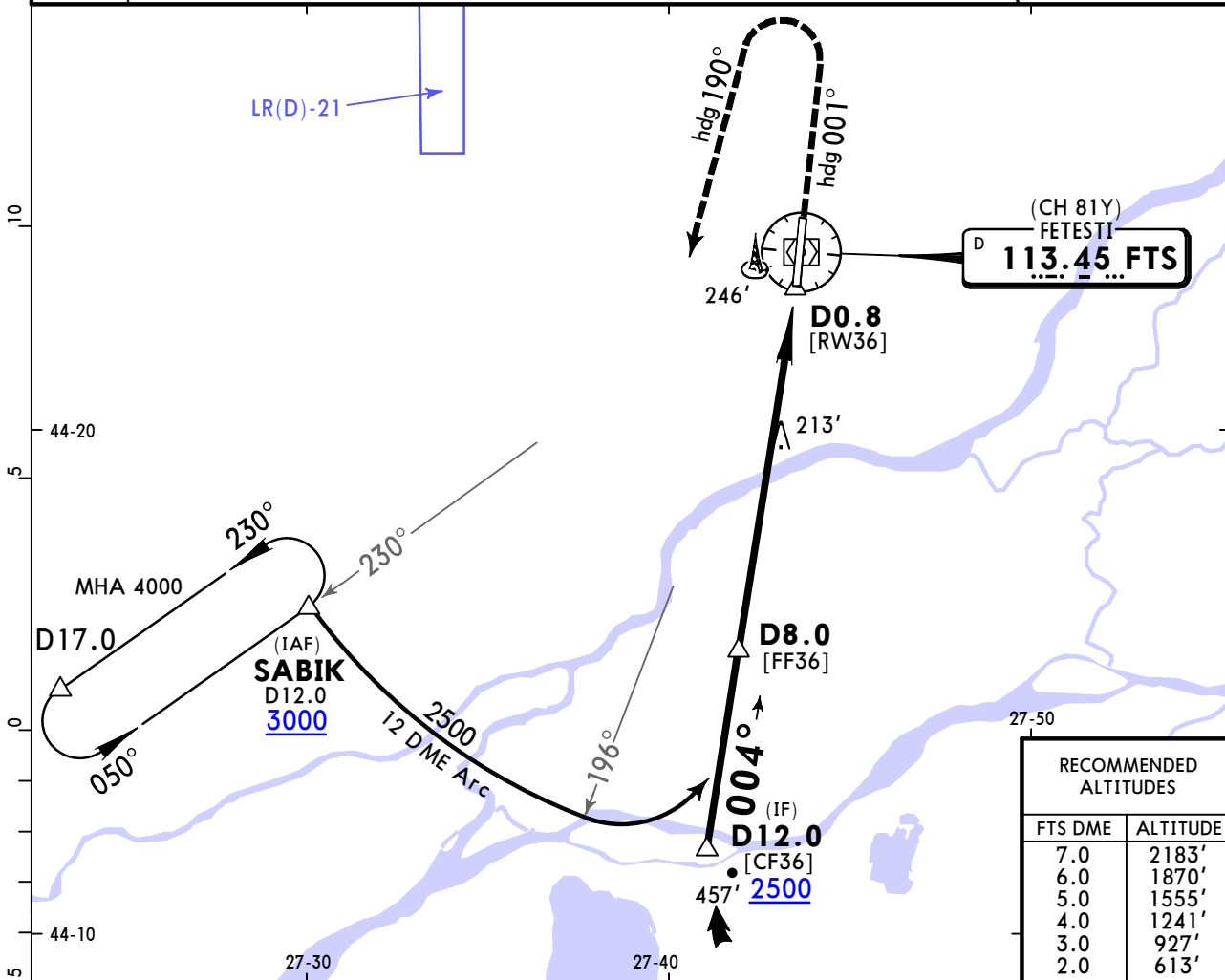
PANS OPS MIL	STRAIGHT-IN LANDING		CIRCLE-TO-LAND	
	MDA(H) <b>610'</b> (427')		Max Kts	MDA(H)
A	R1200m	R1700m	100	690' (507') V1600m
B	R1300m	R1800m	135	690' (507') V2000m
C	R1500m	R2200m	180	790' (607') V2400m
D	R1800m	R2500m	205	890' (707') V4800m
E			250	990' (807') V4800m

**LRFT**  
**FETESTI**

**JEPPESEN**  
18 MAR 22 **(13-2)** Eff 24 Mar

**FETESTI, ROMANIA**  
**VOR Rwy 36**

ATIS 122.525		RUBIN Approach 120.725 309.625		RUBIN Tower 122.1 232.850		Ground 122.1 251.425		
VOR DME FTS <b>113.45</b> (CH 81Y)	Final Apch Crs <b>004°</b>	<b>D8.0</b> <b>2500</b> (2327')	MDA(H) <b>600'</b> (427')	Apt Elev 183' Rwy 173'		2200		
<b>MISSED APCH: Climb on RWY heading to 1500', then turn LEFT heading 190° climbing to 3000' to intercept R-230° FTS VOR DME.</b>								
Alt Set: hPa		Rwy Elev: 6 hPa	Trans level: By ATC		Trans alt: 4000'			
DME required.						MSA FTS VOR DME		



Gnd speed-Kts	70	90	100	120	140	160	ALSF-I PAPI-L	1500'	hdg	3000'	hdg
Descent Angle	3.00°	372	478	531	637	743		849	↑	001°	←
MAP at D0.8											

PANS OPS MIL	<b>Military</b>				STRAIGHT-IN LANDING		CIRCLE-TO-LAND	
	MDA(H) <b>600'</b> (427')							
					ALS out		Max Kts	MDA(H)
	A	R1200m		R1700m		100	680' (497')	V1600m
	B	R1300m		R1800m		135	690' (507')	V2000m
	C	R1500m		R2200m		180	790' (607')	V2400m
D	R1800m		R2500m		205	890' (707')	V4800m	
E	R1800m		R2500m		250	990' (807')	V4800m	

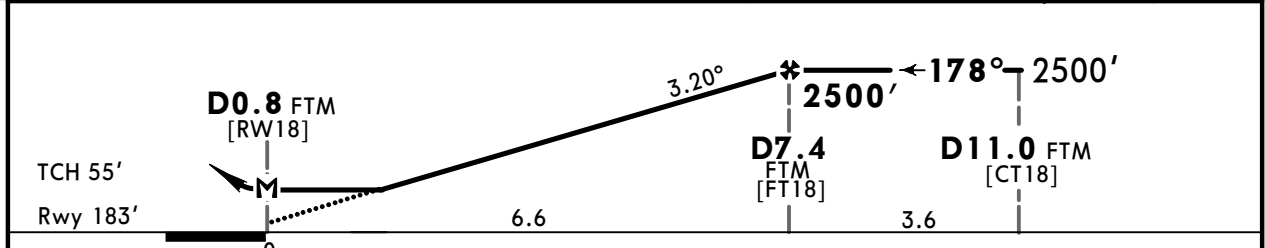
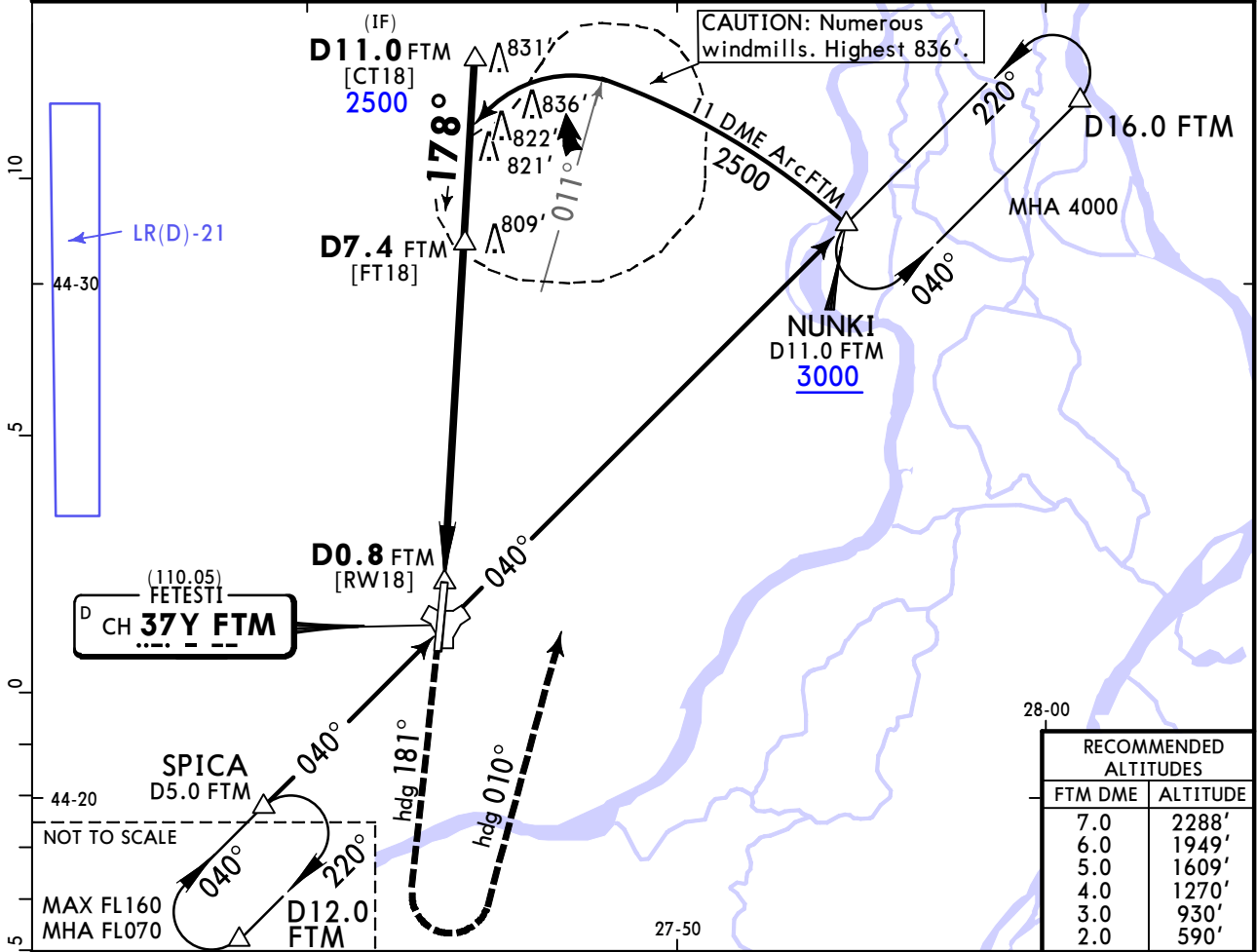
**LRFT**  
**FETESTI**



**FETESTI, ROMANIA**

1 JUL 22 (14-1) Eff 14 Jul HI/LO TACAN Rwy 18

ATIS 122.525		RUBIN Approach 120.725 309.625		RUBIN Tower 122.1 232.850		Ground 122.1 251.425		
TACAN FTM CH <b>37Y</b> (110.05)	Final Apch Crs <b>178°</b>	D7.4 FTM <b>2500'</b> (2317')	MDA(H) <b>610'</b> (427')	Apt Elev 183' Rwy 183'		2200 MSA FTM TACAN		
<b>MISSED APCH: Climb on RWY heading to 1500', then turn LEFT heading 010° climbing to 3000' to intercept R-040 FTM TACAN.</b>								
Alt Set: hPa		Rwy Elev: 7 hPa		Trans level: By ATC				Trans alt: 4000'
TACAN required.								



Gnd speed-Kts	70	90	100	120	140	160	ALS-I PAPI-L	1500'	hdg 181°	3000'	hdg 010°
Descent Angle	3.20°	396	510	566	679	793		906	↑	LT	
MAP at D0.8 FTM											

PANS OPS MIL	<b>Military</b>				STRAIGHT-IN LANDING				CIRCLE-TO-LAND					
	MDA(H) <b>610'</b> (427')													
					ALS out				Max Kts					
	A	R1200m			R1700m			100	690' (507')			V1600m		
	B	R1300m			R1800m			135	690' (507')			V2000m		
	C	R1500m			R2200m			180	790' (607')			V2400m		
D	R1800m			R2500m			205	890' (707')			V4800m			
E	R1800m			R2500m			250	990' (807')			V4800m			

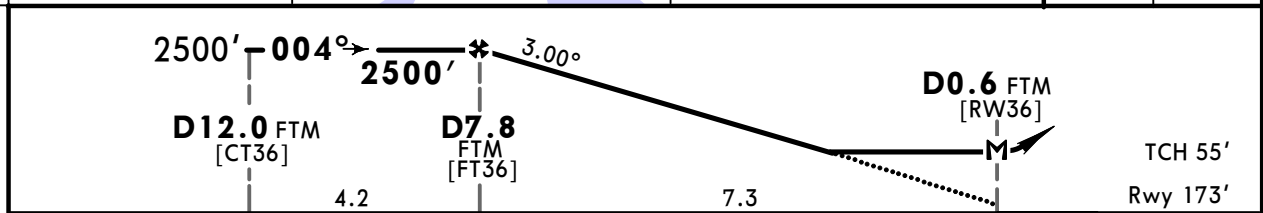
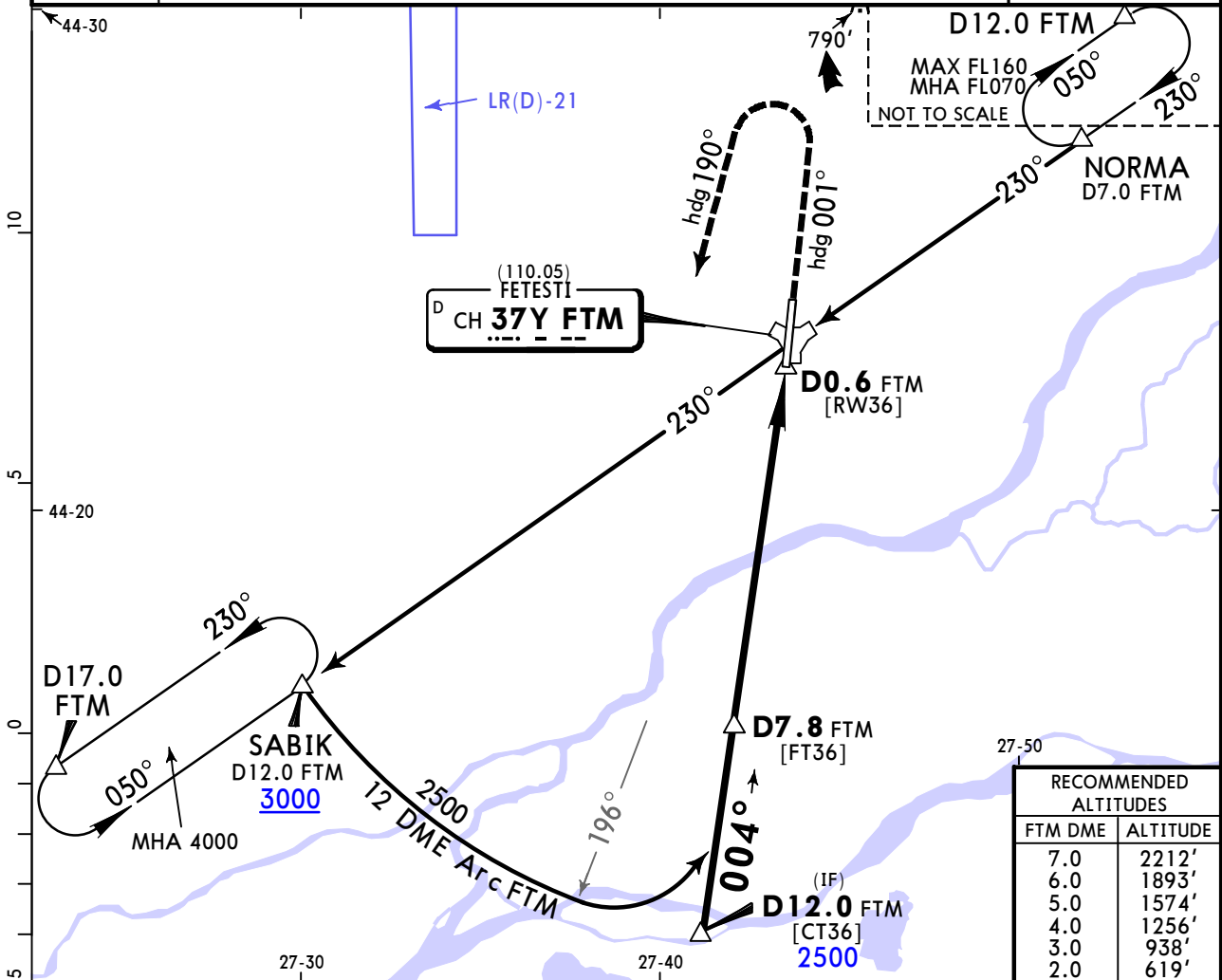
**LRFT**  
**FETESTI**



**FETESTI, ROMANIA**

1 JUL 22 (14-2) Eff 14 Jul HI/LO TACAN Rwy 36

ATIS 122.525		RUBIN Approach 120.725 309.625		RUBIN Tower 122.1 232.850		Ground 122.1 251.425		
TACAN FTM CH <b>37Y</b> (110.05)	Final Apch Crs <b>004°</b>	<b>D7.8 FTM</b> <b>2500'</b> (2327')	MDA(H) <b>600'</b> (427')	Apt Elev 183' Rwy 173'				
<b>MISSED APCH: Climb on RWY heading to 1500', then turn LEFT heading 190° climbing to 3000' to intercept R-230 FTM TACAN.</b>								
Alt Set: hPa		Rwy Elev: 6 hPa		Trans level: By ATC				Trans alt: 4000'
TACAN required.						MSA FTM TACAN		



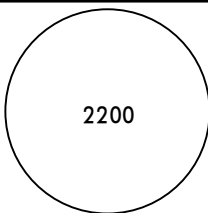
Gnd speed-Kts	70	90	100	120	140	160	ALSF-I PAPI-L	1500'	hdg	3000'	hdg	
Descent Angle	3.00°	372	478	531	637	743		849	↑	on	001°	on
MAP at D0.6 FTM												

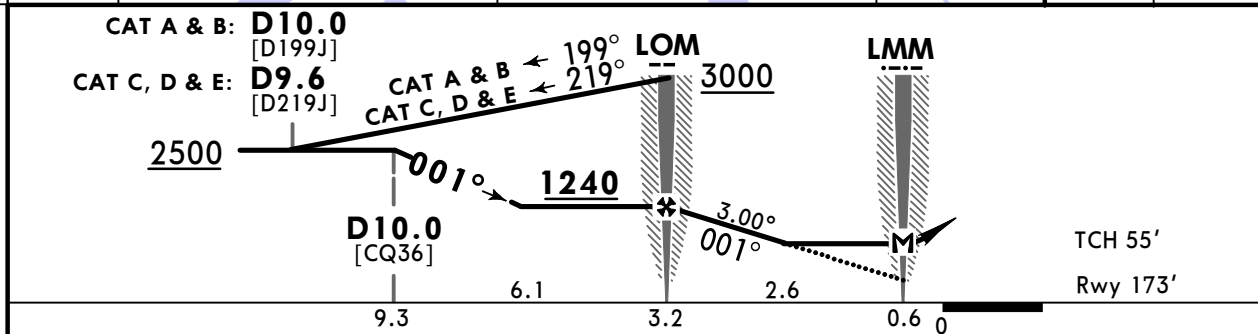
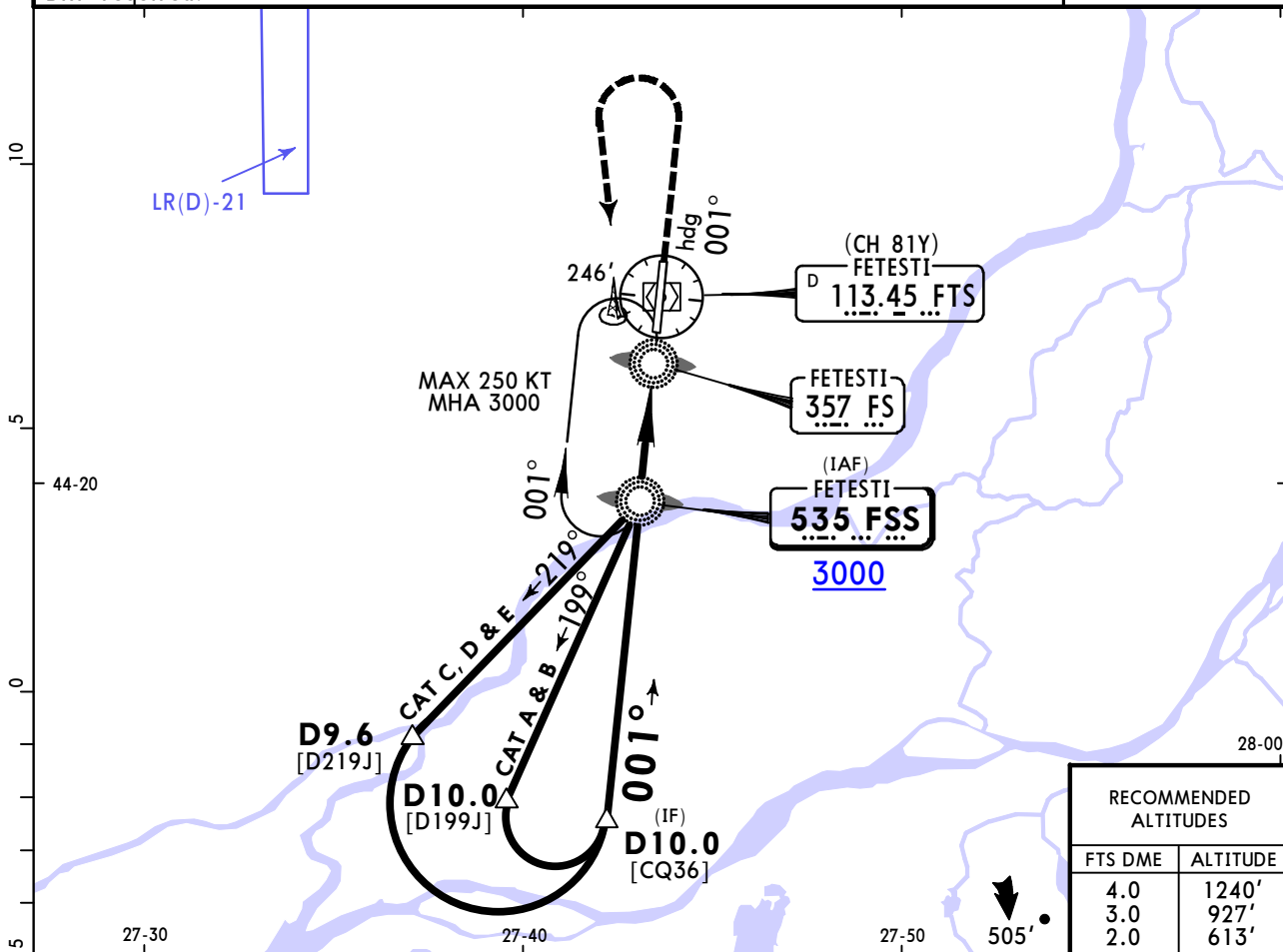
	STRAIGHT-IN LANDING		CIRCLE-TO-LAND	
	ALS out	Max Kts	ALS out	Max Kts
A	R1200m	100	R1700m	680' (497') V1600m
B	R1300m	135	R1800m	690' (507') V2000m
C	R1500m	180	R2200m	790' (607') V2400m
D	R1800m	205	R2500m	890' (707') V4800m
E		250		990' (807') V4800m

**LRFT**  
**FETESTI**

**JEPPESEN**  
18 MAR 22 **(16-1)** Eff 24 Mar

**FETESTI, ROMANIA**  
**NDB Rwy 36**

ATIS 122.525		RUBIN Approach 120.725 309.625		RUBIN Tower 122.1 232.850		Ground 122.1 251.425		
NDB FSS <b>535</b>	Final Apch Crs <b>001°</b>	NDB FSS <b>1240</b> (1067')	MDA(H) <b>680'</b> (507')	Apt Elev 183' Rwy 173'				
<b>MISSED APCH:</b> Climb on RWY heading to 1500', then turn LEFT inbound FSS NDB climbing to 3000' and hold or as directed.								
Alt Set: hPa		Rwy Elev: 6 hPa	Trans level: By ATC		Trans alt: 4000'			
DME required.							MSA FTS VOR	



Gnd speed-Kts	70	90	100	120	140	160	ALS-I PAPI-L	1500'	hdg	3000'	FSS
Descent Angle	3.00°	372	478	531	637	849		↑	001°	←	535
MAP at LMM											

PANS OPS MIL	<b>Military</b>				STRAIGHT-IN LANDING				CIRCLE-TO-LAND				
	MDA(H) <b>680'</b> (507')												
					ALS out				Max Kts	MDA(H)			
	A	R1200m			R1700m			100	680' (497') V1600m				
	B	R1300m			R1800m			135	690' (507') V2000m				
C	R1500m			R2200m			180	790' (607') V2400m					
D	R1800m			R2500m			205	890' (707') V4800m					
E	R1800m			R2500m			250	990' (807') V4800m					

### Chart changes since cycle 15-2023

ADD = added chart, REV = revised chart, DEL = deleted chart.

ACT	PROCEDURE IDENT	INDEX	REV DATE	EFF DATE
<b>FETESTI, (FETESTI - LRFT)</b>				

## TERMINAL CHART CHANGE NOTICES

No Chart Change Notices for Airport LRFT