

List of pages in this Trip Kit

Trip Kit Index

Airport Information For LROD

Terminal Charts For LROD

Revision Letter For Cycle 16-2023

Change Notices

Notebook

General Information

Location: ORADEA ROU
ICAO/IATA: LROD / OMR
Lat/Long: N47° 01.52', E021° 54.15'
Elevation: 468 ft

Airport Use: Public
Daylight Savings: Observed
UTC Conversion: -2:00 = UTC
Magnetic Variation: 4.0° E

Fuel Types: 100 Octane (LL), Jet A-1
Customs: Yes
Airport Type: IFR
Landing Fee: Yes
Control Tower: Yes
Jet Start Unit: No
LLWS Alert: No
Beacon: No

Sunrise: 0429 Z
Sunset: 1616 Z

Runway Information

Runway: 01
Length x Width: 6890 ft x 148 ft
Surface Type: concrete
TDZ-Elev: 464 ft
Lighting: Edge, ALS, Centerline
Displaced Threshold: 492 ft

Runway: 19
Length x Width: 6890 ft x 148 ft
Surface Type: concrete
TDZ-Elev: 453 ft
Lighting: Edge, ALS, Centerline, TDZ
Displaced Threshold: 492 ft

Communication Information

Oradea Tower: 120.200 Secondary
Oradea Tower: 118.455
Oradea Approach: 120.200

LROD/OMR

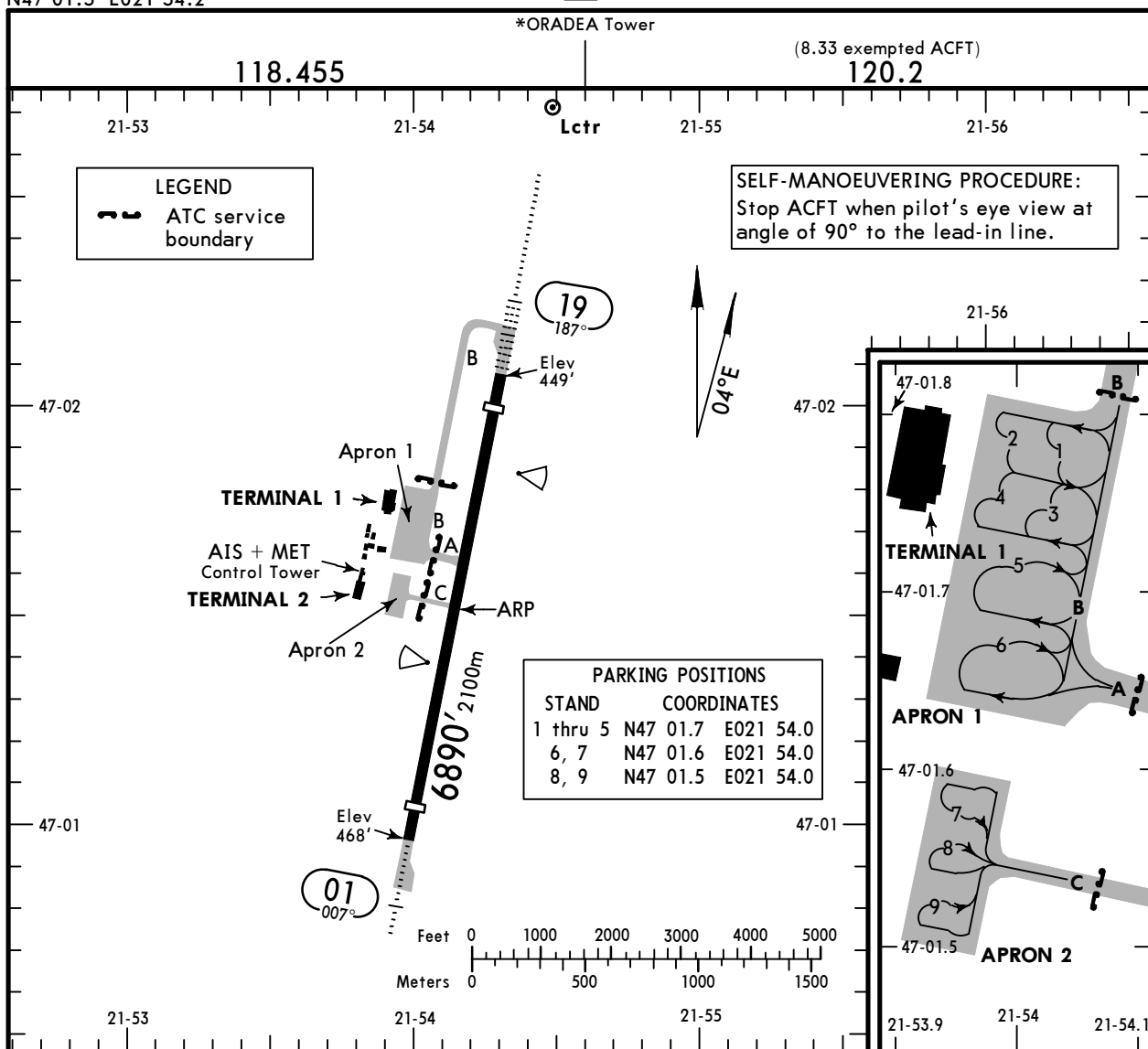
Apt Elev **468'**
N47 01.5 E021 54.2



2 JUL 21 **(10-9)** Eff 15 Jul

ORADEA, ROMANIA

ORADEA



ADDITIONAL RUNWAY INFORMATION

RWY	HIRL (60m) CL(15m) HIALS PAPI-L (3.0°)	USABLE LENGTHS		TAKE-OFF	WIDTH
		Threshold	Landing Beyond		
01	HIRL (60m) CL(15m) HIALS PAPI-L (3.0°)	6398' 1950m	Glide Slope		148'
19	HIRL (60m) CL(15m) HIALS-II TDZ PAPI-L (3.0°)		5426' 1654m		

Standard TAKE-OFF					
Low Visibility Take-off					
	HIRL, CL & relevant RVR	RL, CL & relevant RVR	RL & CL	Day: RL & RCLM Night: RL or CL	Day: RL or RCLM Night: RL or CL Adequate vis ref (Day only)
A					
B	TDZ, MID, RO	TDZ, MID, RO	RVR 200m	RVR 300m	400m
C	RVR 125m	RVR 150m			500m
D					

LROD/OMR ORADEA

JEPPESSEN
14 JUN 19 **(11-1)** Eff 20 Jun

ORADEA, ROMANIA ILS Rwy 19

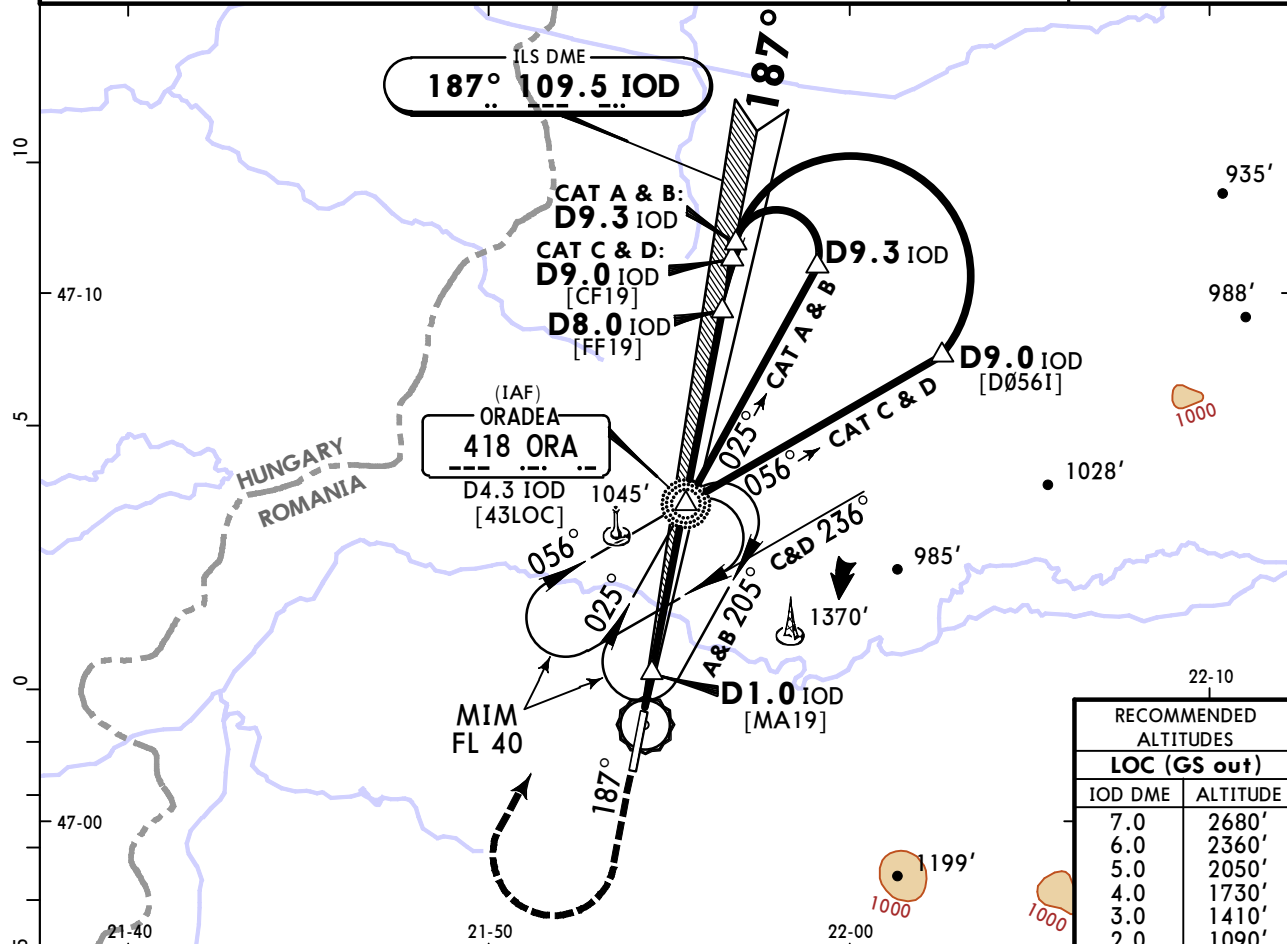
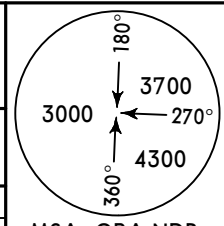
*ORADEA Tower (APP/TWR) (8.33 exempted ACFT)

118.455		120.2	
LOC IOD 109.5	Final Apch Crs 187°	GS D8.0 IOD 3000'(2550')	ILS DA(H) 670'(220')
		Apt Elev 468'	Rwy 450'

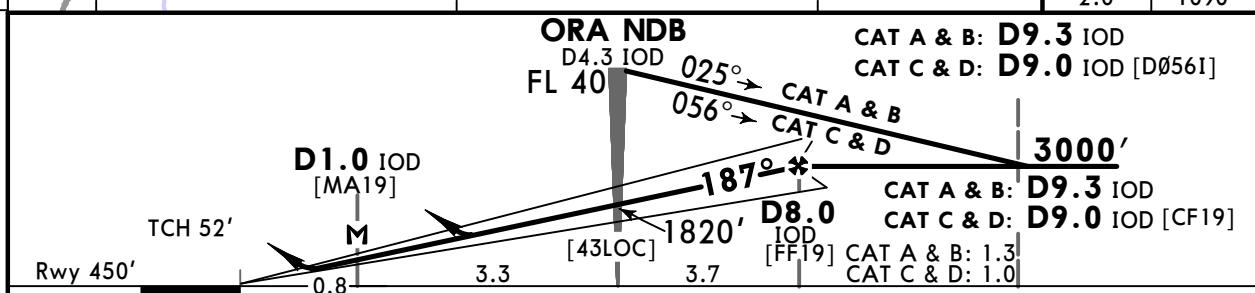
MISSED APCH: Climb STRAIGHT AHEAD to 1500', then turn RIGHT to ORA NDB and join holding at FL 40.

Alt Set: hPa Rwy Elev: 16 hPa Trans level: By ATC Trans alt: 3000'

NDB and DME required. MSA ORA NDB



RECOMMENDED ALTITUDES	
LOC (GS out)	
IOD DME	ALTITUDE
7.0	2680'
6.0	2360'
5.0	2050'
4.0	1730'
3.0	1410'
2.0	1090'



Gnd speed-Kts	70	90	100	120	140	160			
ILS GS or LOC Descent Angle	3.00°	372	478	531	637	743	849		
MAP at D1.0 IOD									

HIALS-II

PAPI

1500'

FL 40

ORA 418

	STRAIGHT-IN LANDING RWY 19				CIRCLE-TO-LAND	
	ILS		LOC (GS out) 2		Max Kts	MDA(H) VIS
	FULL	TDZ or CL out	ALS out	ALS out		
A					100	1110' (642') 1500m
B					135	1110' (642') 1600m
C	RVR 550m	RVR 550m 1	RVR 1200m		180	1770' (1302') 2400m
D				RVR 1700m RVR 2400m	205	1770' (1302') 3600m

1 W/o HUD/AP/FD: RVR 750m. **2** CDFA
CHANGES: Tower frequency. © JEPPESSEN, 2003, 2019. ALL RIGHTS RESERVED.

LROD/OMR ORADEA

JEPPESEN
14 JUN 19 (16-1) Eff 20 Jun

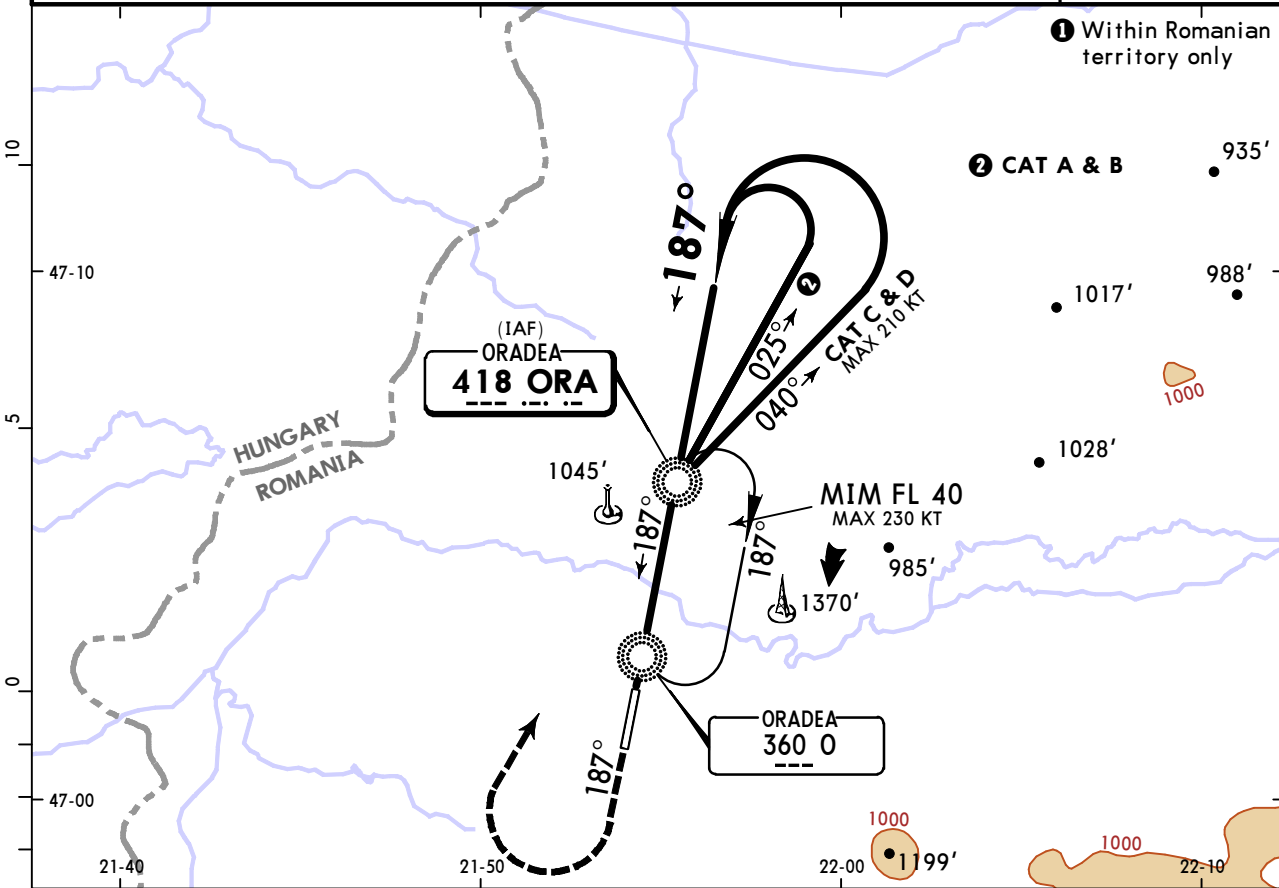
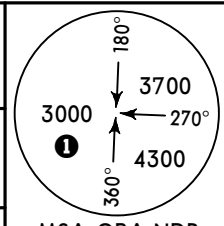
ORADEA, ROMANIA NDB Rwy 19

*ORADEA Tower (APP/TWR) (8.33 exempted ACFT)

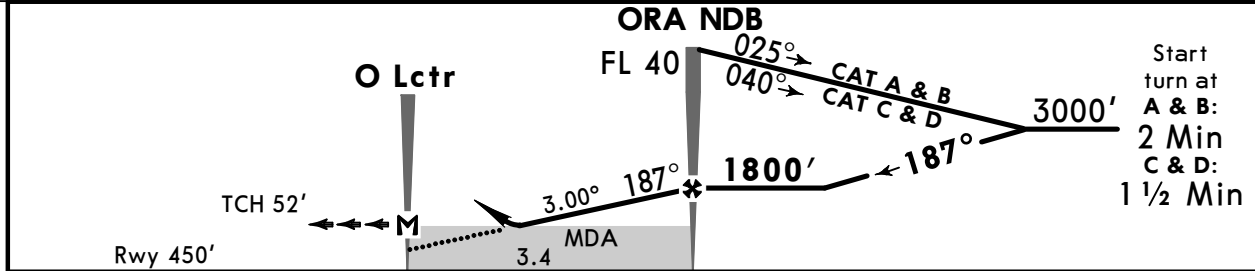
118.455		120.2		
NDB ORA 418	Final Apch Crs 187°	Procedure Alt ORA NDB 1800' (1350')	DA/MDA(H) 1110' (660')	Apt Elev 468' Rwy 450'

MISSED APCH: Climb STRAIGHT AHEAD to 1500', then turn RIGHT (MAX 185 KT) to ORA NDB and join holding at FL 40.

Alt Set: hPa Rwy Elev: 16 hPa Trans level: By ATC Trans alt: 3000'



DIST to O Lctr	1.0	2.0	3.0	3.4
ALTITUDE	1040'	1360'	1680'	1800'



Gnd speed-Kts	70	90	100	120	140	160	HIALS-II PAPI	1500'	185 KT MAX	ORA 418
Descent angle	3.00°	372	478	531	637	743		849	↑	→ RT

PANS OPS	Standard		STRAIGHT-IN LANDING RWY 19		CIRCLE-TO-LAND		
	CDFA						
	DA/MDA(H) 1110' (660')						
	ALS out				Max Kts	MDA(H)	VIS
	A	RVR 1500m			100	1130' (662')	1500m
B	RVR 1500m			135	1130' (662')	1600m	
C	RVR 2300m	RVR 2400m		180	1770' (1302')	2400m	
D				205	1770' (1302')	3600m	

Chart changes since cycle 15-2023

ADD = added chart, REV = revised chart, DEL = deleted chart.

ACT	PROCEDURE IDENT	INDEX	REV DATE	EFF DATE
	ORADEA, (ORADEA - LROD)			

TERMINAL CHART CHANGE NOTICES

No Chart Change Notices for Airport LROD