

List of pages in this Trip Kit

Trip Kit Index

Airport Information For LRSM

Terminal Charts For LRSM

Revision Letter For Cycle 16-2023

Change Notices

Notebook

General Information

Location: SATU MARE ROU
ICAO/IATA: LRSM / SUJ
Lat/Long: N47° 42.20', E022° 53.13'
Elevation: 413 ft

Airport Use: Public
Daylight Savings: Observed
UTC Conversion: -2:00 = UTC
Magnetic Variation: 5.0° E

Fuel Types: Jet A-1
Customs: Yes
Airport Type: IFR
Landing Fee: Yes
Control Tower: Yes
Jet Start Unit: No
LLWS Alert: No
Beacon: No

Sunrise: 0425 Z
Sunset: 1612 Z

Runway Information

Runway: 01
Length x Width: 8202 ft x 148 ft
Surface Type: asphalt
TDZ-Elev: 413 ft
Lighting: Edge, ALS, Centerline

Runway: 19
Length x Width: 8202 ft x 148 ft
Surface Type: asphalt
TDZ-Elev: 407 ft
Lighting: Edge, ALS, Centerline, TDZ

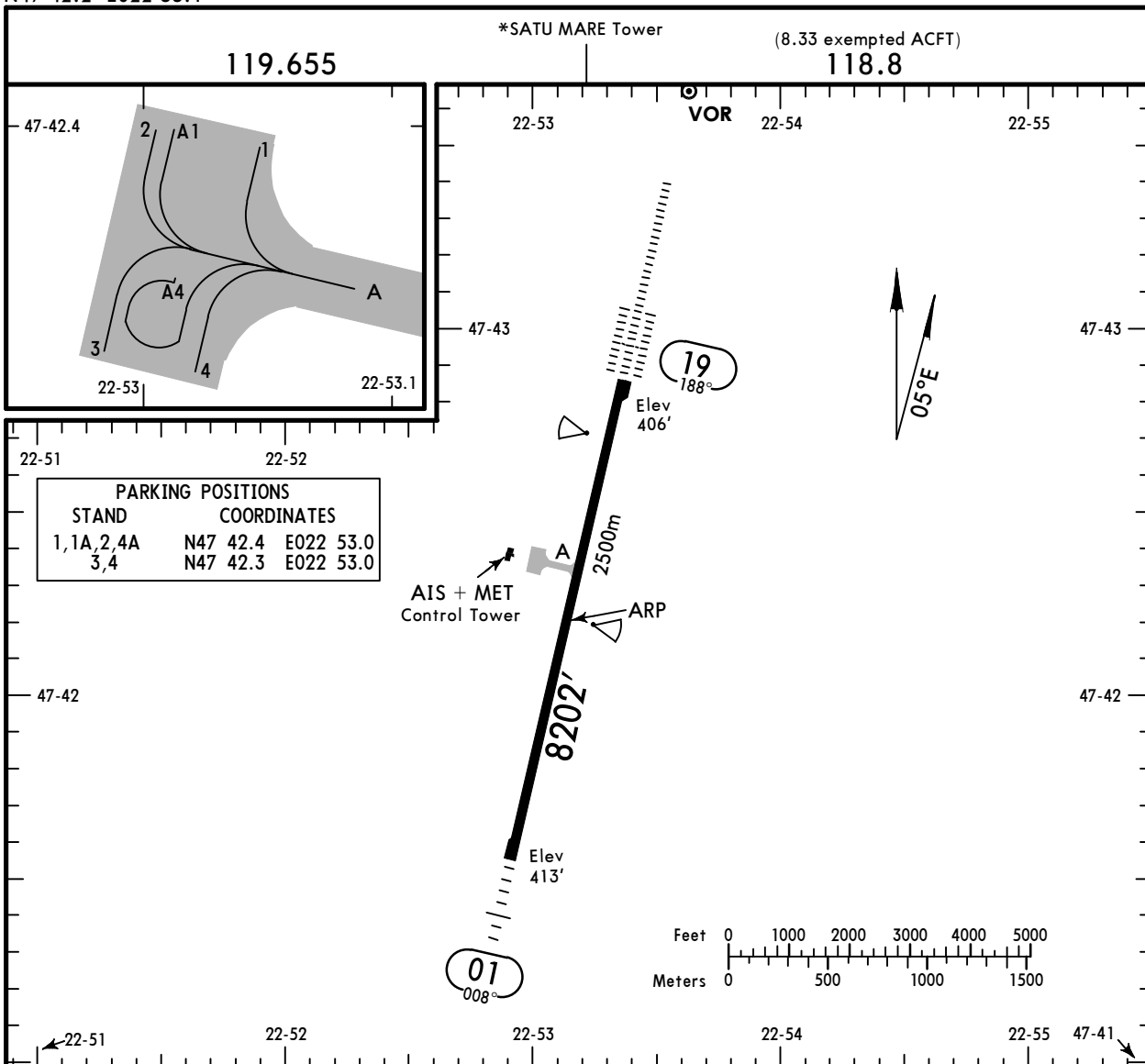
Communication Information

Satu Mare Tower: 119.655
Satu Mare Tower: 118.800 Secondary
Satu Mare Approach: 118.800

LRSM/SUJ
 Apt Elev **413'**
 N47 42.2 E022 53.1

JEPPesen
 1 FEB 19 **(10-9)**

SATU MARE, ROMANIA
SATU MARE



ADDITIONAL RUNWAY INFORMATION

RWY		USABLE LENGTHS		TAKE-OFF	WIDTH
		Threshold	Glide Slope		
01	HIRL (60m) CL(15m) HIALS PAPI-L (3.0°) RVR				148'
19	HIRL (60m) CL(15m) HIALS-II TDZ PAPI-L (3.0°) RVR		7169' 2185m		45m

Standard TAKE-OFF

	Low Visibility Take-off					
	HIRL, CL & relevant RVR	RL, CL & relevant RVR	RL & CL	Day: RL & RCLM Night: RL or CL	Day: RL or RCLM Night: RL or CL	Adequate vis ref (Day only)
A						
B	TDZ, MID, RO	TDZ, MID, RO				
C	RVR 125m	RVR 150m	RVR 200m	RVR 300m	400m	500m
D						

LRSM/SUJ SATU MARE

JEPPESSEN 2 JUL 21 **(11-1)** Eff 15 Jul

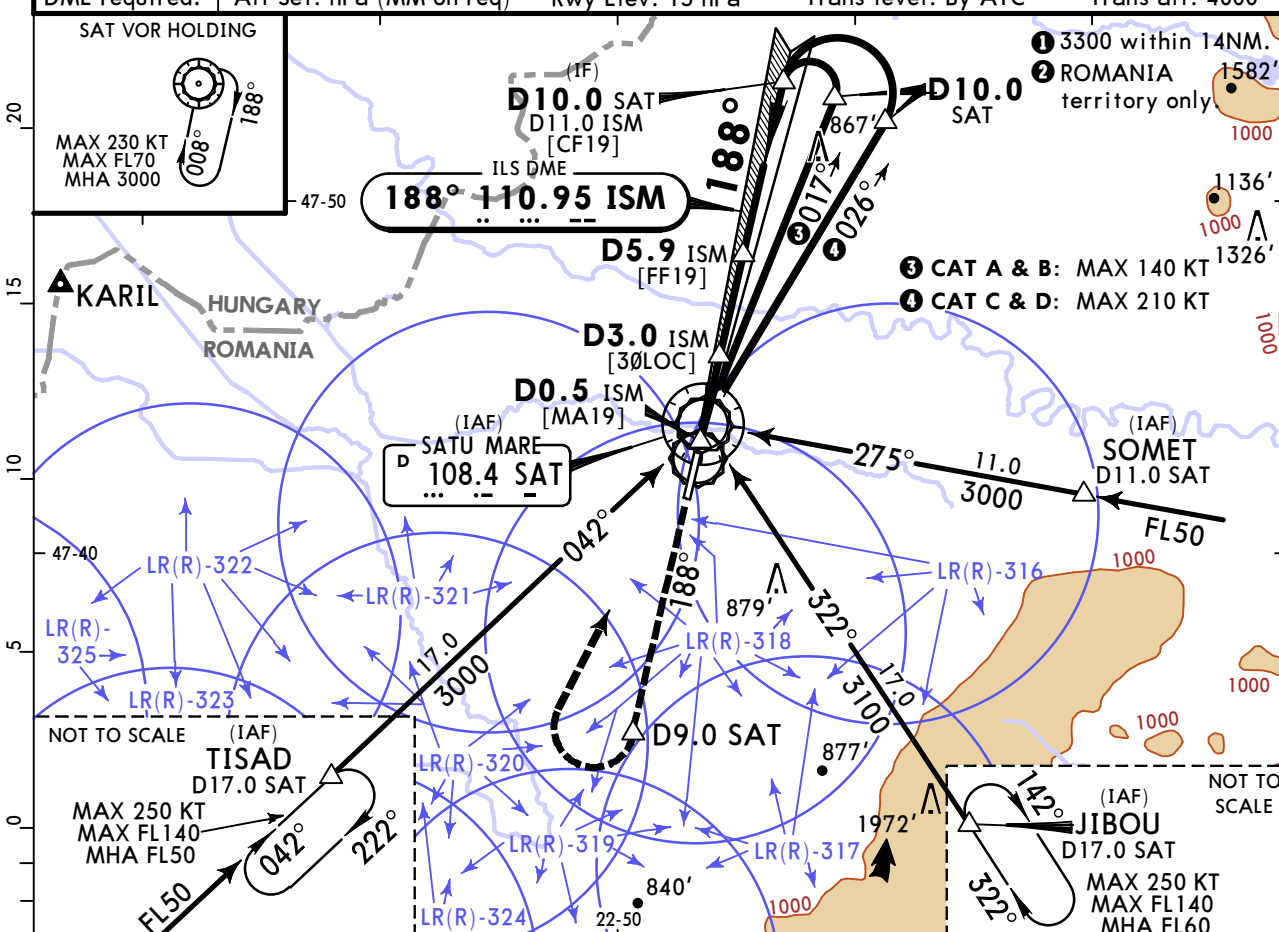
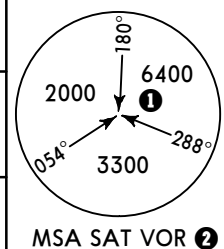
SATU MARE, ROMANIA ILS Rwy 19

Approach Control through Tower
*SATU MARE Tower

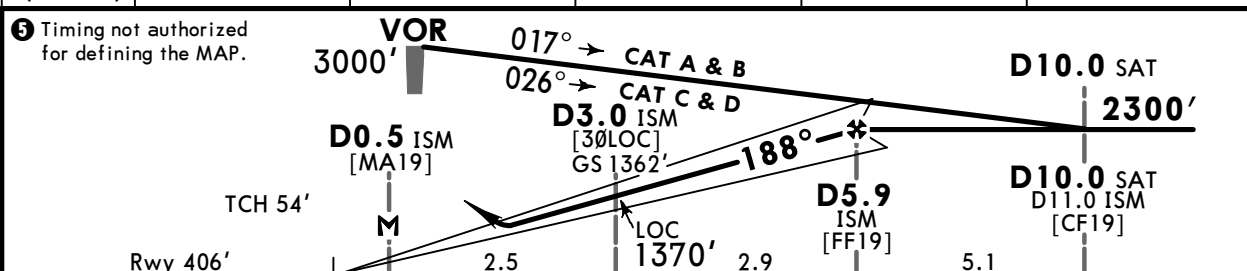
119.655		118.8 (8.33 exempted ACFT)		
LOC ISM 110.95	Final Apch Crs 188°	D5.9 ISM 2300' (1894')	ILS DA(H) Refer to Minimums	Apt Elev 413' Rwy 406'

MISSED APCH: Climb STRAIGHT AHEAD to D9.0 SAT, then turn RIGHT to VOR climbing to 3000' and hold.

DME required. Alt Set: hPa (MM on req) Rwy Elev: 15 hPa Trans level: By ATC Trans alt: 4000'



LOC (GS out)	ISM DME ALTITUDE	1.0	2.0	3.0	4.0
		726'	1044'	1363'	1681'



Gnd speed-Kts	70	90	100	120	140	160	HIALS-II PAPI D9.0 SAT
ILS GS or LOC Descent Angle	3.00°	372	478	531	637	849	
MAP at D0.5 ISM							
D5.9 ISM to MAP	5.4	4:38	3:36	3:14	2:42	2:19	2:02

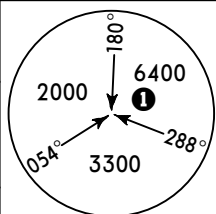
PANS OPS	Standard STRAIGHT-IN LANDING RWY 19						CIRCLE-TO-LAND		
	ILS DA(H)		with D3.0 ISM CDFA		w/o D3.0 ISM CDFA		Max Kts	MDA(H)	VIS
	ABC: 606' (200')	D: 615' (209')	770' (364')		830' (424')				
	FULL	TDZ or CL out	ALS out		ALS out	ALS out			
A					RVR 1500m	RVR 1500m	100	930' (517')	1500m
B	RVR 550m	RVR 550m	RVR 1200m	RVR 1000m	RVR 1500m	RVR 1300m	135	930' (517')	1600m
C					RVR 1700m	RVR 2000m	180	1280' (867')	2400m
D							205	1280' (867')	3600m

1 RVR 750m when a Flight Director or Autopilot or HUD to DA is not used.

LRSM/SUJ SATU MARE

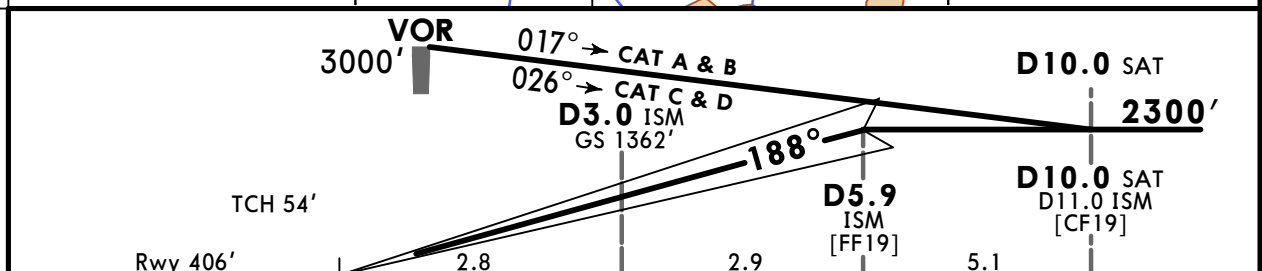
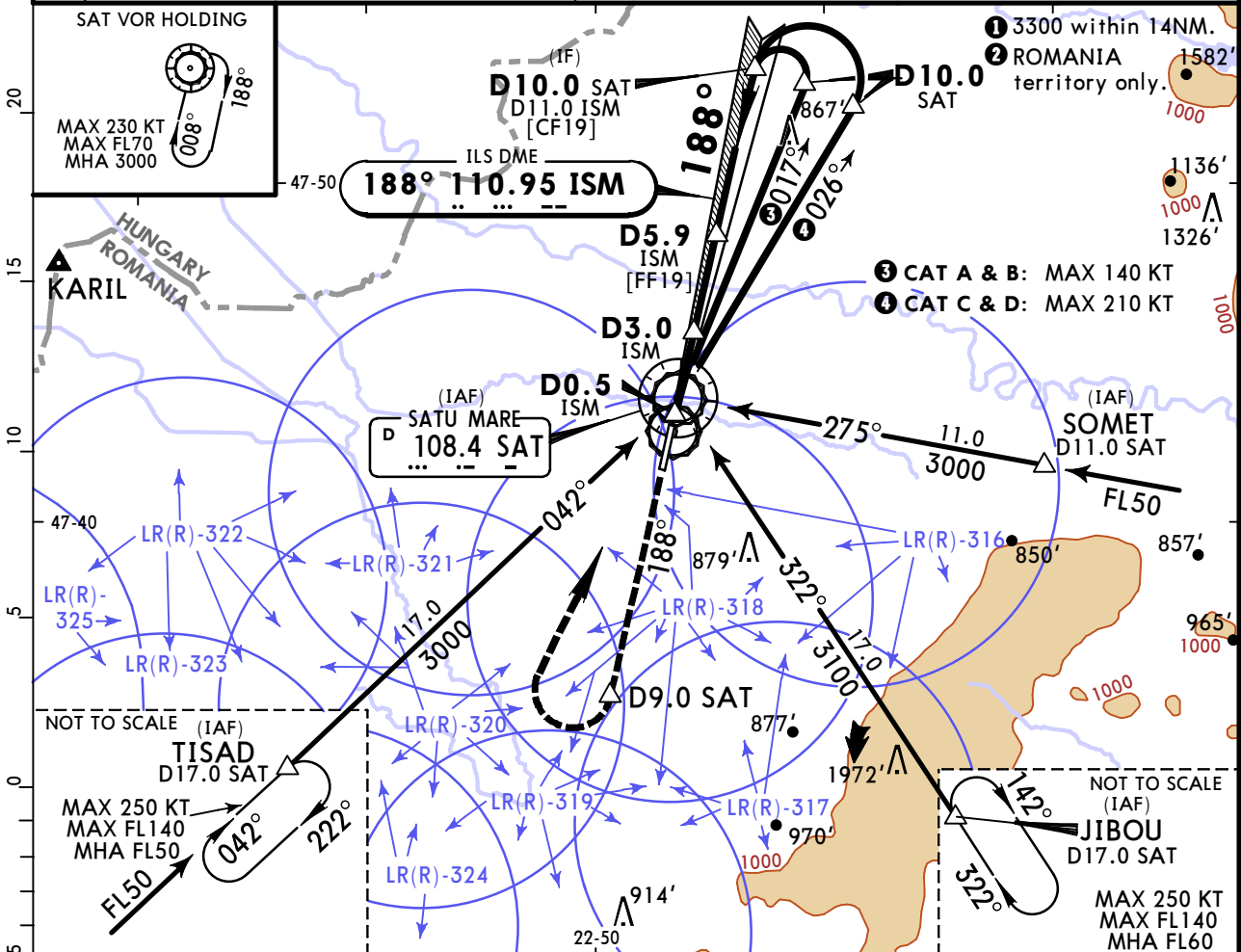
JEPPESEN SATU MARE, ROMANIA 2 JUL 21 (11-1A) Eff 15 Jul CAT II ILS Rwy 19

119.655		118.8 (8.33 exempted ACFT)	
LOC ISM 110.95	Final Apch Crs 188°	D5.9 ISM 2300' (1894')	CAT II ILS RA/DA(H) Refer to Minimums Apt Elev 413' Rwy 406'



MISSED APCH: Climb STRAIGHT AHEAD to D9.0 SAT, then turn RIGHT to VOR climbing to 3000' and hold.

DME required. Alt Set: hPa (MM on req) Rwy Elev: 15 hPa Trans level: By ATC Trans alt: 4000'
 1. Special Aircrew and Aircraft Certification Required.



Gnd speed-Kts	70	90	100	120	140	160	HIALS-II PAPI	D9.0 SAT
GS	3.00°	372	478	531	637	743		

Standard STRAIGHT-IN LANDING RWY 19 CAT II ILS			
A RA 102' DA(H) 506'(100')	B RA 110' DA(H) 514'(108')	C RA 123' DA(H) 527'(121')	D RA 138' DA(H) 540'(134')

RVR 300m	RVR 400m
----------	----------

PANS OPS

LRSM/SUJ
SATU MARE



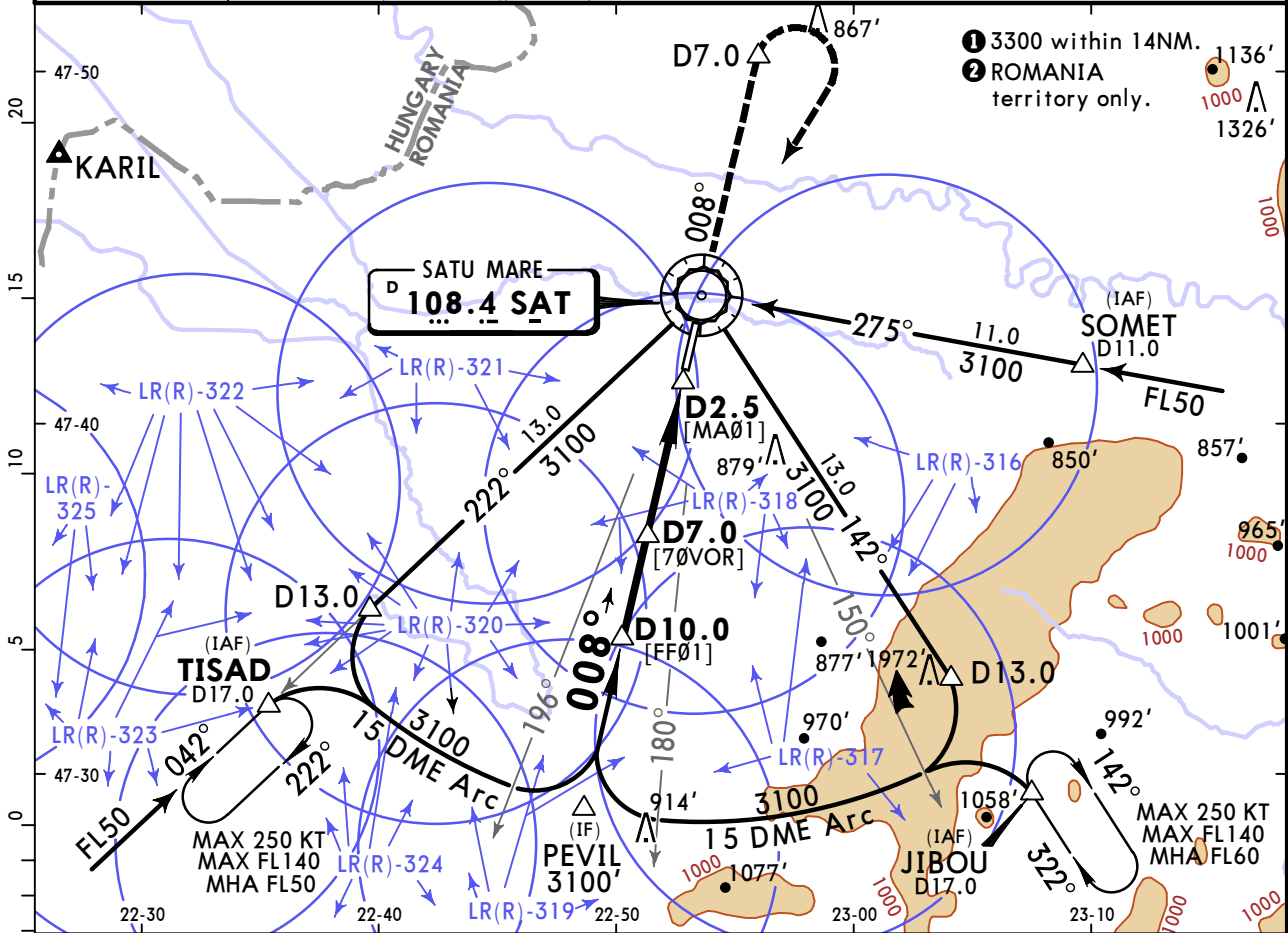
SATU MARE, ROMANIA
VOR Rwy 01

2 JUL 21 (13-1) Eff 15 Jul

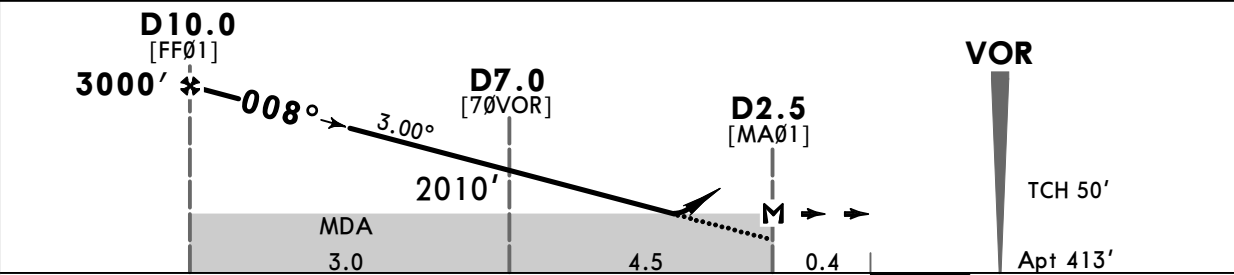
BRIEFING STRIP™	Approach Control through Tower *SATU MARE Tower					
	119.655	Final Apch Crs 008°	D10.0 3000' (2587')	118.8 (8.33 exempted ACFT) DA/MDA(H) 930' (517')		Apt Elev 413'
	VOR SAT 108.4					

MISSED APCH: Climb STRAIGHT AHEAD to D7.0, then turn RIGHT to VOR climbing to FL50, follow R-222 to TISAD and hold.

DME required. Alt Set: hPa (MM on req) Rwy Elev: 15 hPa Trans level: By ATC Trans alt: 4000'



SAT DME	9.0	8.0	7.0	6.0	5.0	4.0
ALTITUDE	2643'	2325'	2006'	1688'	1369'	1051'



Gnd speed-Kts	70	90	100	120	140	160
Descent Angle 3.00°	372	478	531	637	743	849
MAP at D2.5						
D10.0 to MAP	7.5	6:26	5:00	4:30	3:45	3:13
Timing not authorized for defining the MAP.						

D7.0

HIALS
PAPI

PANS OPS	Standard		STRAIGHT-IN LANDING RWY 01		CIRCLE-TO-LAND	
	CDFA DA/MDA(H) 930' (517')					
					ALS out	
	A	RVR 1500m		Max Kts	MDA(H)	VIS
	B	RVR 1900m		100	930' (517')	1500m
C	RVR 2400m		135	930' (517')	1600m	
D			180	1280' (867')	2400m	
			205	1280' (867')	3600m	

Chart changes since cycle 15-2023

ADD = added chart, REV = revised chart, DEL = deleted chart.

ACT	PROCEDURE IDENT	INDEX	REV DATE	EFF DATE
SATU MARE, (SATU MARE - LRSM)				

TERMINAL CHART CHANGE NOTICES

Chart Change Notices for Airport LRSM

Type: Terminal

Effectivity: Temporary

Begin Date: Immediately

End Date: 20230419

(10-9) Ground movement and parking stands temporary suspended. Follow marshaller signals.

Type: Terminal

Effectivity: Temporary

Begin Date: 20230420

End Date: Until Further Notice

Based on AIRAC AIP SUP 04/23 (10-9) Ground movement and parking stands temporary suspended. Follow marshaller signals.

Type: Terminal

Effectivity: Temporary

Begin Date: 20230223

End Date: Until Further Notice

Based on AIP AIRAC SUP 01/23, ACFT with wingspan of 92/28m or greater are not allowed to make 180 degrees turns on the RWY. The 180 degrees turns shall be made only on RWY turn pads located at each RWY end.