

List of pages in this Trip Kit

Trip Kit Index

Airport Information For LRSV

Terminal Charts For LRSV

Revision Letter For Cycle 16-2023

Change Notices

Notebook

General Information

Location: SUCEAVA ROU
ICAO/IATA: LRSV / SCV
Lat/Long: N47° 41.18', E026° 21.27'
Elevation: 1375 ft

Airport Use: Public
Daylight Savings: Observed
UTC Conversion: -2:00 = UTC
Magnetic Variation: 7.0° E

Fuel Types: 100-130 Octane, Jet A-1
Customs: Yes
Airport Type: IFR
Landing Fee: Yes
Control Tower: Yes
Jet Start Unit: No
LLWS Alert: No
Beacon: No

Sunrise: 0412 Z
Sunset: 1558 Z

Runway Information

Runway: 16
Length x Width: 8071 ft x 148 ft
Surface Type: asphalt
TDZ-Elev: 1372 ft
Lighting: Edge, ALS, Centerline

Runway: 34
Length x Width: 8071 ft x 148 ft
Surface Type: asphalt
TDZ-Elev: 1331 ft
Lighting: Edge, ALS, Centerline, TDZ
Displaced Threshold: 1378 ft

Communication Information

Suceava Tower: 118.300 Secondary
Suceava Tower: 129.955
Suceava Approach: 118.300

LRSV/SCV
STEFAN CEL MARE

JEPPESEN

9 JUN 23

10-1P

Eff 15 Jun

SUCEAVA, ROMANIA

AIRPORT BRIEFING

1. GENERAL

1.1. NOISE ABATEMENT PROCEDURES

On ground:

ATC will approve engine ground operation only at idle speed.

1.2. LOW VISIBILITY PROCEDURES (LVP)

1.2.1. GENERAL

The preparation phase will be implemented when CAT II operations are expected: when RVR is 800m, and/or horizontal visibility is 1500m (when RVR is not available), and/or ceiling/vertical visibility is 500'.

The operations phase will be commenced when RVR is 550m, and/or horizontal visibility is 800m (when RVR is not available), and/or ceiling/vertical visibility is 200'.

LVP will be terminated when RVR is 800m, and/or horizontal visibility is 1500m (when RVR is not available), and/or ceiling/vertical visibility is 300' and a continuing improvement in these conditions is anticipated.

1.2.2. TAKE-OFF

LVP operations will be provided when requested by an ACFT operator to conduct LVTO (Low Visibility Take-off) when the RVR is below 400m.

If LVP operations are not in force, LVTO must be requested a minimum of 30 minutes in advance to permit the appropriate preparations.

1.2.3. CAT II APPROACH AND LANDING

Pilots will be informed by RTF when LVP are in operation.

The LOC-sensitive area will be protected when a landing ACFT is within 4NM from touchdown. ATC will provide suitable spacing between ACFT on final approach to achieve this objective.

It is forbidden to enter/stop on the RWY for any ACFT:

- From the moment an ACFT is in an APCH procedure less than 4NM from touchdown and until the ACFT vacates the RWY.
- When an ACFT is in a take-off procedure, not less than 1 minute after flying over the ILS LLZ antenna.

1.3. RWY OPERATIONS

Backtrack of ACFT CAT C, D is permitted only using RWY turning bays.

1.4. TAXI PROCEDURES

Operations permitted only for ACFT with maximum code letter D.

Pilots are requested to use minimum power when ground maneuvering.

1.5. PARKING INFORMATION

Stop ACFT when pilot's eye view is at an angle of 90° to the lead-in line.

Self-parking procedure applicable at stands 1, 3 and 6.

At stands 2, 4, 5 and alternative stand 5A parking will be performed with marshaller assistance.

The ACFT will be guided to the allocated parking stand by using red marshalling wands.

On apron 2 and TWY D LVP are prohibited.

On stands 7 and 8 parking will be performed with marshaller assistance.

1.6. OTHER INFORMATION

Birds flocks within APT area.

Caution advised when taking off and landing.

2. ARRIVAL

2.1. RADIO COMMUNICATION FAILURE

Communication Failure Procedure for ILS or LOC Z RWY 34 and ILS or LOC Y RWY 34

- If ILS instrument flight procedure was assigned or received by ATC, set transponder 7600, proceed according assigned or designated ILS instrument flight procedure. Descending shall be executed in accordance with vertical restrictions specified on chart.
- If ILS instrument flight procedure was not assigned or received by ATC, set transponder 7600, proceed according to flight plan to BRATY and hold 4 minutes, then continue the ILS approach. Descending shall be executed in accordance with vertical restrictions specified on chart.

Communication Failure Procedure for VOR Z RWY 16 and VOR Y RWY 16

- If VOR RWY 16 instrument flight procedure was assigned or received by ATC, set transponder 7600, proceed according assigned or designated VOR RWY 16 instrument flight procedure. Descending shall be executed in accordance with vertical restrictions specified on chart.
- If VOR RWY 16 instrument flight procedure was not assigned or received by ATC, set transponder 7600, proceed according to flight plan to RUCCU and hold 4 minutes, then continue the VOR RWY 16 approach. Descending shall be executed in accordance with vertical restrictions specified on chart.

Communication Failure Procedure for VOR Z RWY 34 and VOR Y RWY 34

- If VOR RWY 34 instrument flight procedure was assigned or received by ATC, set transponder 7600, proceed according assigned or designated VOR RWY 34 instrument flight procedure. Descending shall be executed in accordance with vertical restrictions specified on chart.
- If VOR RWY 34 instrument flight procedure was not assigned or received by ATC, set transponder 7600, proceed according to flight plan to BRATY and hold 4 minutes, then continue the VOR RWY 34 approach. Descending shall be executed in accordance with vertical restrictions specified on chart.

2.2. CAT II OPERATIONS

RWY 34 is equipped with ILS and is approved for CAT II operations (DH less than 200' but not less than 100', RVR not less than 300m).

2.3. TAXI PROCEDURES

2.3.1. STANDARD TAXI ROUTES

Arrival on	Instruction given by ATC			TWY to be followed
		Name of the STD Taxi Route		
RWY 34 (CAT A, B and C ACFT turn around in turning bay at the end of the RWY)	Taxi via STD taxi route	Arrival 1A	Stands 1, 2, 3, 4, 5, 5A and 6	TWY A
			To Stands 7 and 8	TWY A, TWY D
RWY 34 (CAT A, B, C and D ACFT turn around in turning bay at the end of the RWY)		Arrival 1B	Stands 1, 2, 3, 4, 5, 5A and 6	TWY B

LRSV/SCV
STEFAN CEL MARE

JEPPESEN

9 JUN 23

10-1P2

Eff 15 Jun

SUCEAVA, ROMANIA
AIRPORT BRIEFING

2. ARRIVAL

Arrival on	Instruction given by ATC			TWY to be followed	
		Name of the STD Taxi Route			
RWY 16 (CAT A, B and C ACFT turn around in turning bay at the end of the RWY)	Taxi via STD taxi route	Arrival 2A	To	Stands 1, 2, 3, 4, 5, 5A and 6	TWY A to stands 1, 2, 3, 4, 5, 5A and 6
				Stands 7 and 8	TWY A, TWY D
RWY 16 (CAT A, B, C and D ACFT turn around in turning bay at the end of the RWY)		Arrival 2B		Stands 1, 2, 3, 4, 5, 5A and 6	TWY B to stands 1, 2, 3, 4, 5, 5A and 6

3. DEPARTURE

3.1. TAXI PROCEDURES

3.1.1. STANDARD TAXI ROUTES

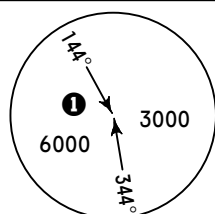
Departure from	Instruction given by ATC			TWY to be followed		
		Name of the STD Taxi Route				
Stands 1, 2, 3, 4, 5, 5A and 6	Taxi via STD taxi route	Departure 1A	To holding position	A	RWY 16	TWY A, turn LEFT, taxi to the end of RWY and line up THR 16
					RWY 34	TWY A, turn RIGHT, taxi to the end of RWY and line up THR 34
		Departure 1B		B	RWY 16	TWY B, turn LEFT, taxi to the end of RWY and line up THR 16
					RWY 34	TWY B, turn RIGHT, taxi to the end of RWY and line up THR 34
Stands 7 and 8		Departure 1C	A		RWY 16	TWY D, turn LEFT, taxi to TWY A. TWY A, turn LEFT, taxi to the end of RWY and line up THR 16
					RWY 34	TWY D, turn LEFT, taxi to TWY A. TWY A, turn RIGHT, taxi to the end of RWY and line up THR 34

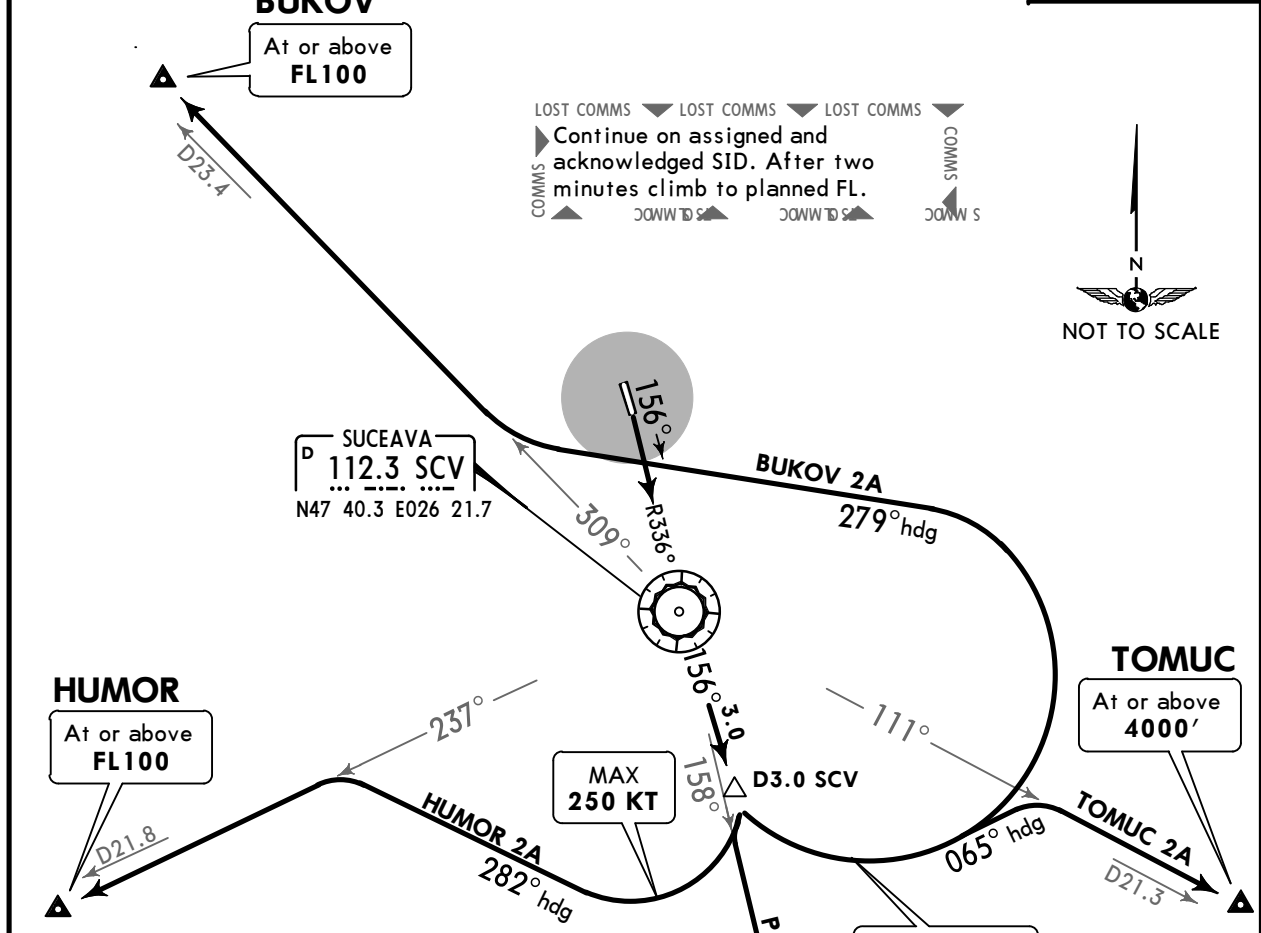
LRSV/SCV
STEFAN CEL MARE

JEPESEN
9 JUN 23 **10-3** **Eff 15 Jun**

SUCEAVA, ROMANIA

SID

Apt Elev 1375'	Trans level: By ATC Trans alt: 5000' DME required.	
<p>BUKOV 2A [BUKO2A], HUMOR 2A [HUMO2A] PASKA 2A [PASK2A], TOMUC 2A [TOMU2A] DEPARTURES (RWY 16)</p>		
<p style="text-align: right;">MSA SCV VOR ① 3500 within 12NM</p>		



These SIDs require ATS minimum climb gradients of

BUKOV 2A: 4.8% up to the enroute safety altitude, due to airspace restriction.

HUMOR 2A: 6.3% up to the enroute safety altitude, due to airspace restriction.

PASKA 2A: 3.6% up to the enroute safety altitude, due to airspace restriction.

Gnd speed-KT	75	100	150	200	250	300
3.6% V/V (fpm)	273	365	547	729	911	1094
4.8% V/V (fpm)	365	486	729	972	1215	1458
6.3% V/V (fpm)	478	638	957	1276	1595	1914

Advise ATC if unable to ensure the ATS climb gradient.

SID	ROUTING
BUKOV 2A	Climb on SCV R-336 (156° track) inbound to SCV VOR, then follow SCV R-156 (156° track), at D3.0 SCV turn LEFT (MAX 250 KT), 279° heading, intercept SCV R-309 (309° track) to BUKOV at or above FL100.
HUMOR 2A	Climb on SCV R-336 (156° track) inbound to SCV VOR then follow SCV R-156 (156° track), at D3.0 SCV turn RIGHT (MAX 250 KT), 282° heading, SCV R-237 (237° track) to HUMOR at or above FL100.
PASKA 2A	Climb on SCV R-336 (156° track) inbound to SCV VOR, then follow SCV R-156 (156° track), at D3.0 SCV intercept SCV R-158 (158° track) to PASKA at or above FL060.
TOMUC 2A	Climb on SCV R-336 (156° track) inbound to SCV VOR, then follow SCV R-156 (156° track), at D3.0 SCV turn LEFT (MAX 250 KT), 065° heading, intercept SCV R-111 (111° track) to TOMUC at or above 4000'.

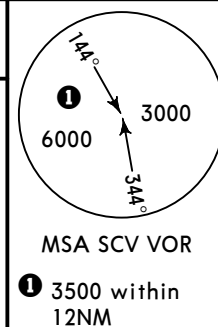
LRSV/SCV
STEFAN CEL MARE

JEPPESSEN
9 JUN 23 **(10-3A)** Eff 15 Jun

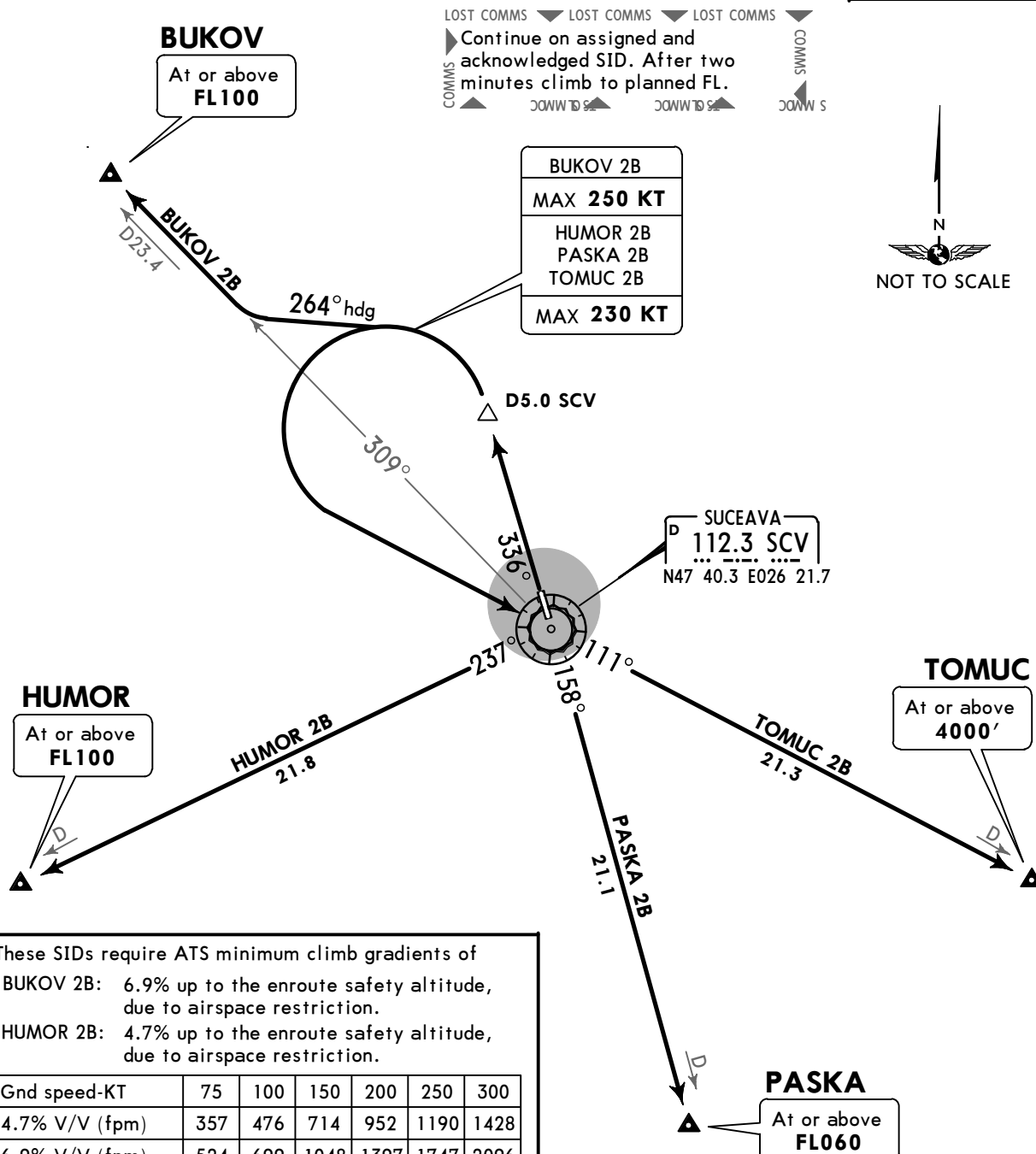
SUCEAVA, ROMANIA

SID

Apt Elev 1375'
Trans level: By ATC Trans alt: 5000'
DME required.



**BUKOV 2B [BUKO2B], HUMOR 2B [HUMO2B]
PASKA 2B [PASK2B], TOMUC 2B [TOMU2B]
DEPARTURES
(RWY 34)**



These SIDs require ATS minimum climb gradients of

BUKOV 2B: 6.9% up to the enroute safety altitude, due to airspace restriction.

HUMOR 2B: 4.7% up to the enroute safety altitude, due to airspace restriction.

Gnd speed-KT	75	100	150	200	250	300
4.7% V/V (fpm)	357	476	714	952	1190	1428
6.9% V/V (fpm)	524	699	1048	1397	1747	2096

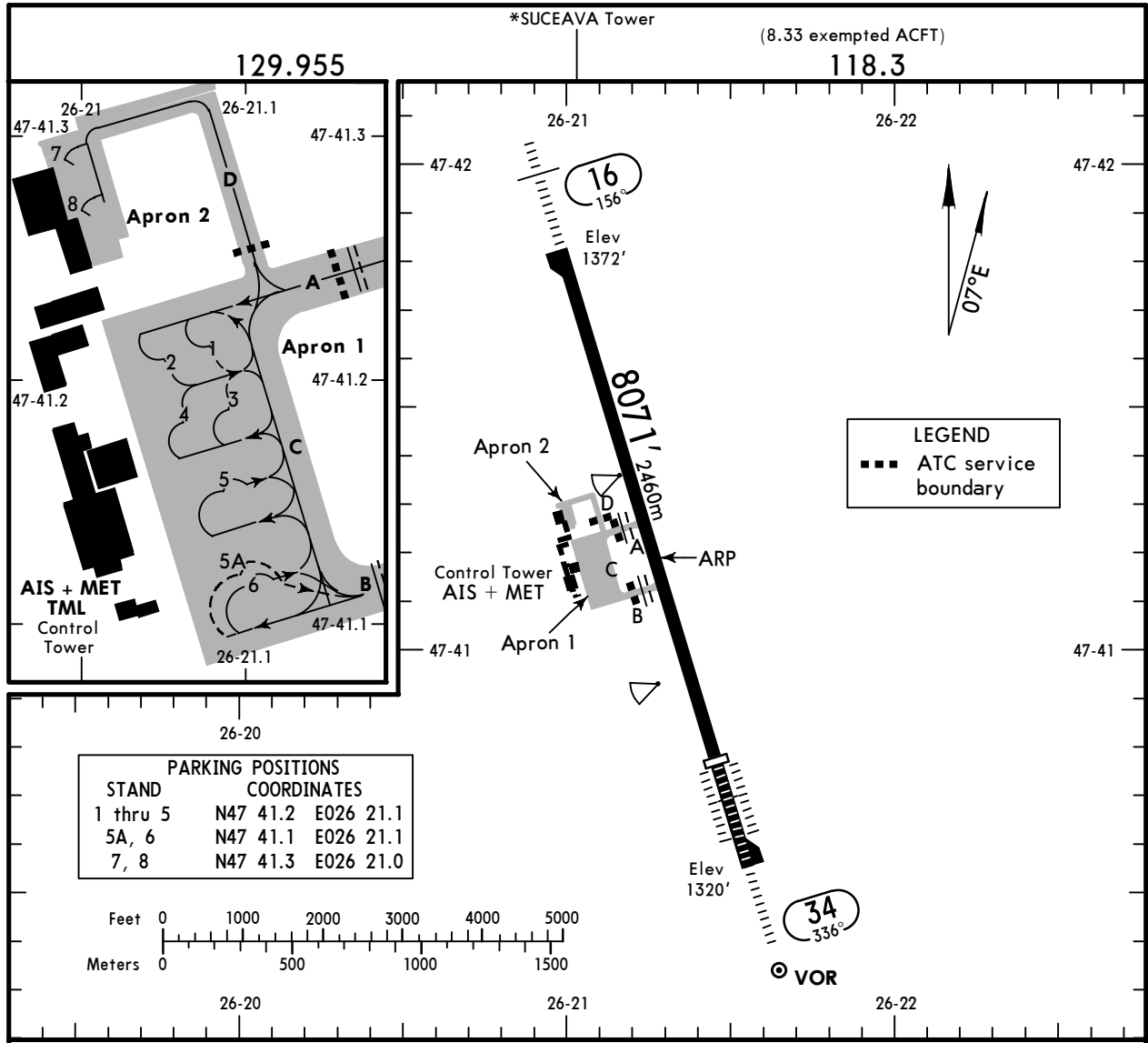
Advise ATC if unable to ensure the ATS climb gradient.

SID	ROUTING
BUKOV 2B	Climb on SCV R-336 (336° track), at D5.0 SCV turn LEFT (MAX 250 KT), 264° heading, intercept SCV R-309 (309° track) to BUKOV at or above FL100.
HUMOR 2B	Climb on SCV R-336 (336° track), at D5.0 SCV turn LEFT (MAX 230 KT) direct to SCV VOR, SCV R-237 (237° track) to HUMOR at or above FL100.
PASKA 2B	Climb on SCV R-336 (336° track), at D5.0 SCV turn LEFT (MAX 230 KT) direct to SCV VOR, SCV R-158 (158° track) to PASKA at or above FL060.
TOMUC 2B	Climb on SCV R-336 (336° track), at D5.0 SCV turn LEFT (MAX 230 KT) direct to SCV VOR, SCV R-111 (111° track) to TOMUC at or above 4000'.

LRSV/SCV
 Apt Elev **1375'**
 N47 41.2 E026 21.3

JEPPESEN
 9 JUN 23 **(10-9)** Eff 15 Jun

SUCEAVA, ROMANIA
 STEFAN CEL MARE



ADDITIONAL RUNWAY INFORMATION

RWY					USABLE LENGTHS		TAKE-OFF	WIDTH
					LANDING BEYOND			
	HIRL (60m)	CL (15m)	HIALS	PAPI-L (3.00°)	Threshold	Glide Slope		
16	HIRL (60m)	CL (15m)	HIALS	PAPI-L (3.00°)				148'
34	HIRL (60m)	CL (15m)	HIALS-II	TDZ PAPI-L ① RVR	6693' 2040m	5842' 1781m		45m

① (3.00°)

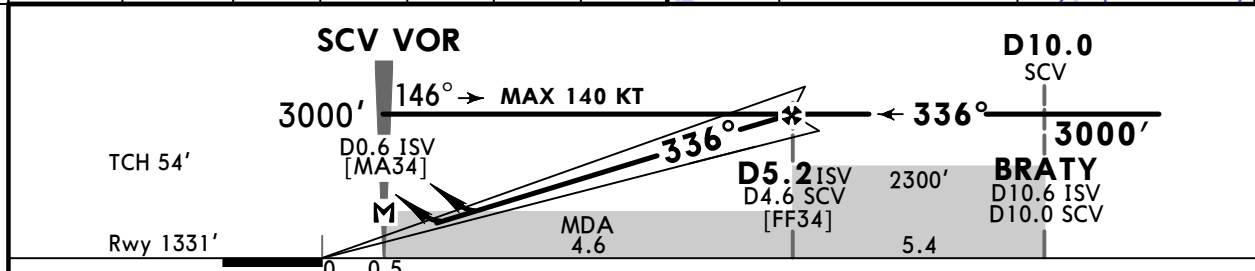
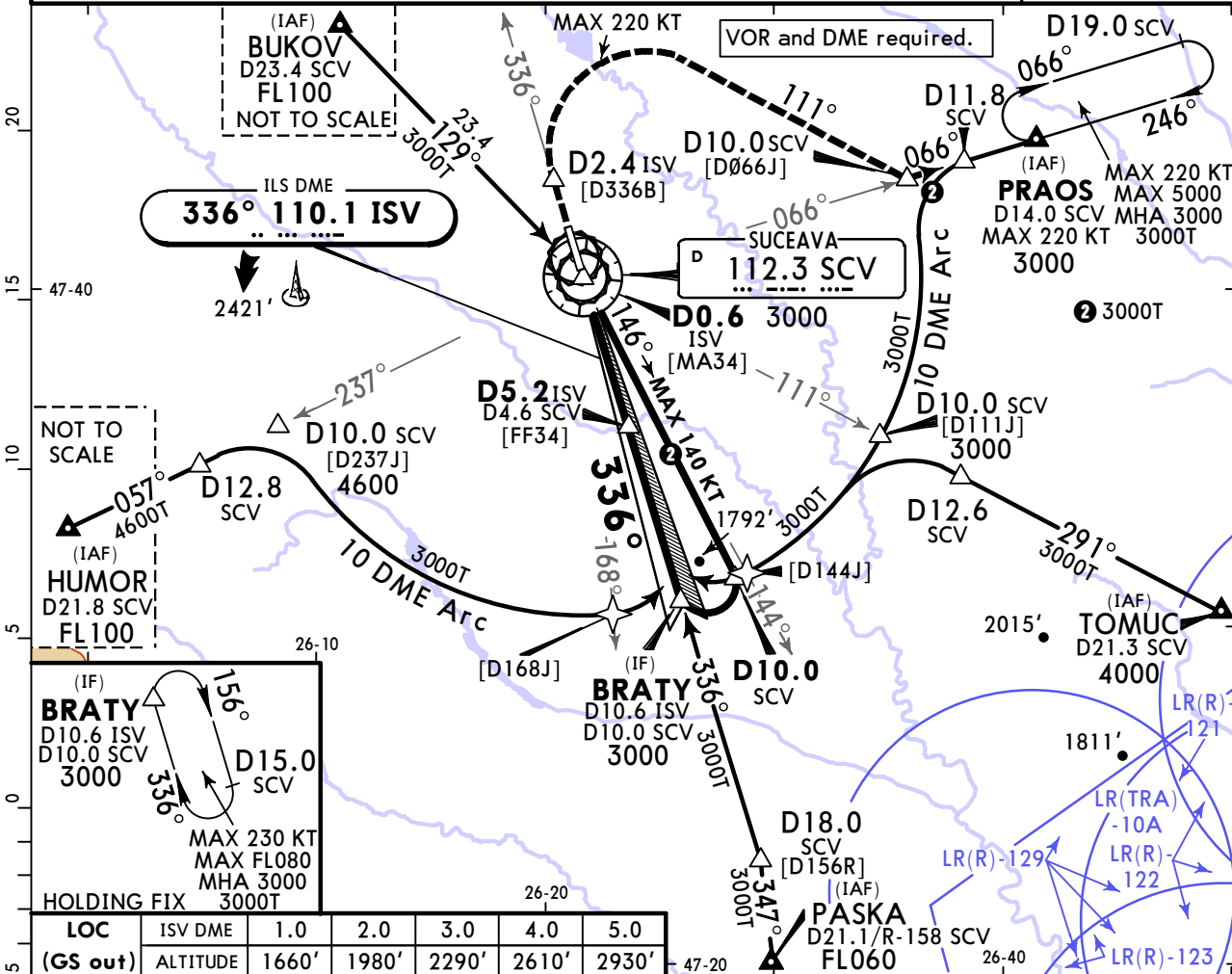
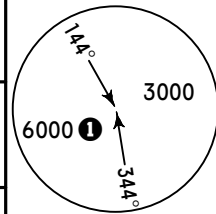
Std/State		TAKE-OFF					
Low Visibility Procedures required		RCLM or RL or CL	RL or CL	Approval for Low Visibility Take-off required		Adequate Vis Ref	
RCLM & RL & CL (spacing 15m or less) & RVR	RCLM & RL & CL & RVR			RCLM & RL & RVR	RCLM & RVR & RL or CL	DAY	NIGHT
				DAY	NIGHT	DAY	NIGHT
R125m	R150m	R300m		R/V400m		R/V500m	NA

LRSV/SCV
STEFAN CEL MARE

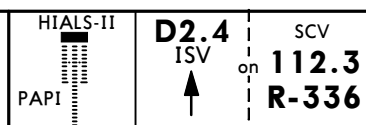
JEPPESEN
9 JUN 23
Eff 15 Jun **(11-1)** **CAT A & B**

SUCEAVA, ROMANIA
ILS or LOC Z Rwy 34

*SUCEAVA Tower (APP)		*SUCEAVA Tower		
118.3		129.955	118.3 (8.33 exempted ACFT)	
LOC ISV 110.1	Final Apch Crs 336°	D5.2 ISV 3000' (1669')	ILS DA(H) 1531' (200')	Apt Elev 1375' Rwy 1331'
MISSED APCH: Climb on SCV VOR R-336. At D2.4 ISV turn RIGHT heading 111° to intercept and follow SCV VOR R-066 to PRAOS, climbing to 3000' and hold or follow ATC instruction. MAX 220 KT.				
Alt Set: hPa	Rwy Elev: 48 hPa	Trans level: By ATC	Trans alt: 5000'	



Gnd speed-Kts	70	90	100	120	140	160
GS	3.00°	372	478	531	637	849
MAP at D0.6 ISV						
D5.2 ISV/D4.6 SCV to MAP	4.6	3:57	3:04	2:46	2:18	1:58



PANS OPS	Std/State		STRAIGHT-IN LANDING			CIRCLE-TO-LAND	
	ILS		LOC (GS out)			MDA(H)	
	DA(H) 1531' (200')		DA/MDA(H) 1600' (269')			Max Kts	
	TDZ or CL out	ALS out	TDZ or CL out	ALS out	100	1840'(465') V1500m	
A	R550m	R1200m	R600m	R600m	135	1880'(505') V1600m	
B						NOT APPLICALE	
C	NOT APPLICALE		NOT APPLICALE			C	NOT APPLICALE
D	NOT APPLICALE		NOT APPLICALE			D	NOT APPLICALE

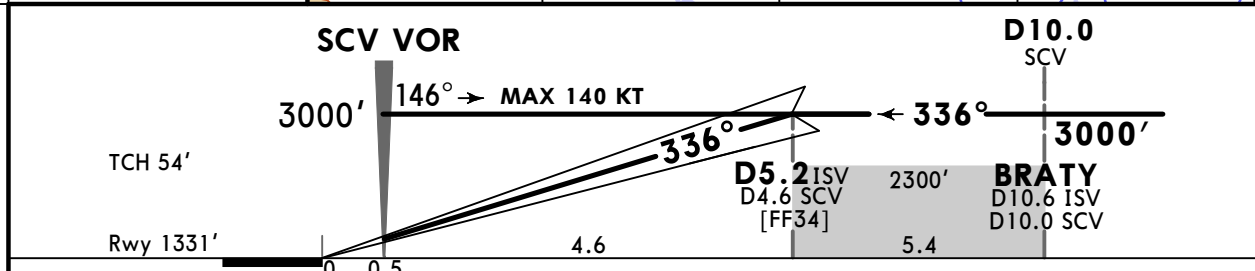
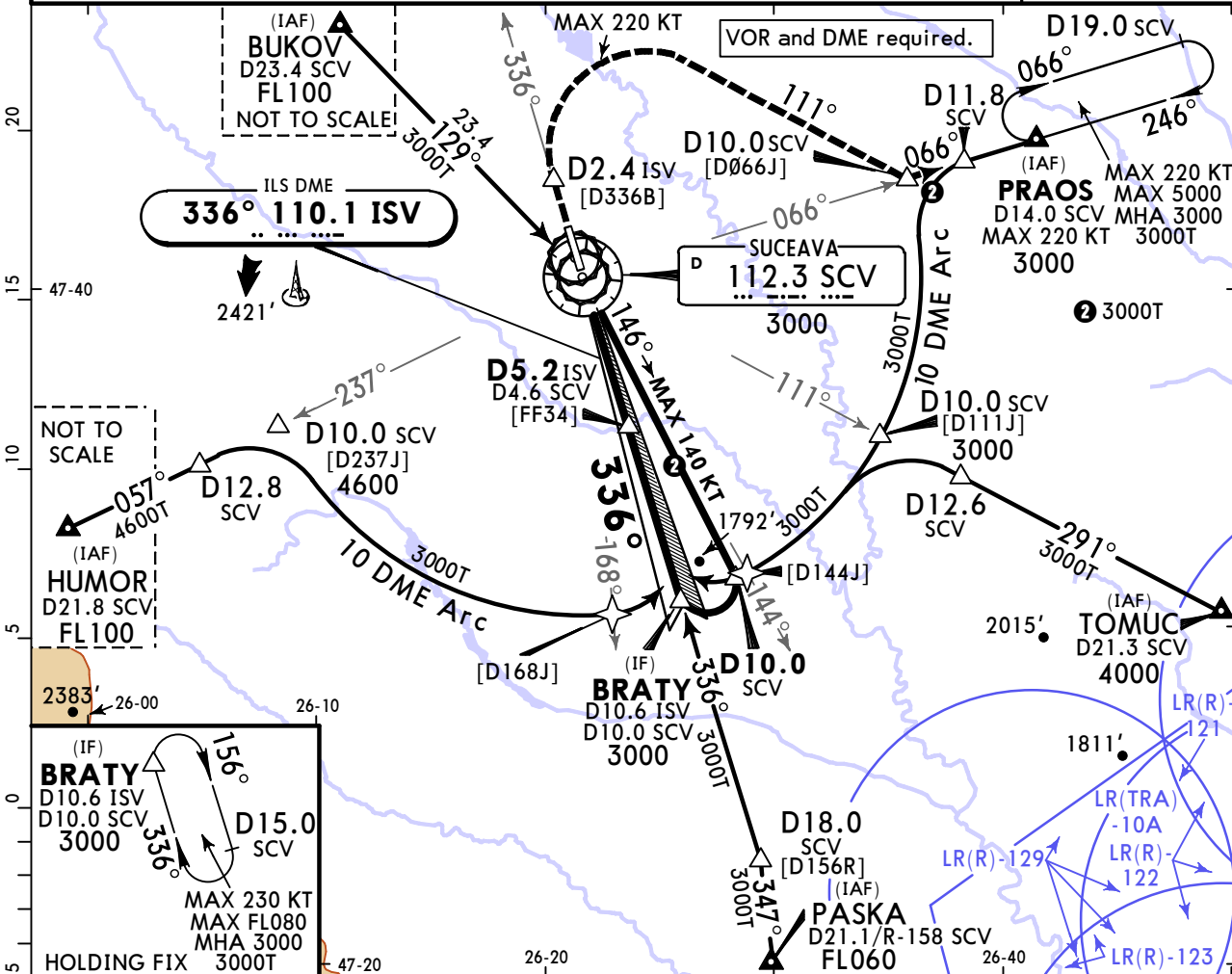
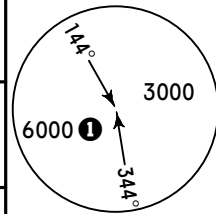
1 VNAV DA(H) in lieu of MDA(H) depends on operator policy. 2 R750m when a Flight Director or Autopilot or HUDLS to DA is not used. 3 R750m for CDFA 2D operations.

LRSV/SCV
STEFAN CEL MARE

9 JUN 23
Eff 15 Jun **11-1A** CAT A & B

SUCEAVA, ROMANIA
CAT II ILS Z Rwy 34

*SUCEAVA Tower (APP)		*SUCEAVA Tower		
118.3		129.955	118.3 (8.33 exempted ACFT)	
LOC ISV 110.1	Final Apch Crs 336°	D5.2 ISV 3000' (1669')	CAT II ILS RA 107' DA(H) 1431' (100')	Apt Elev 1375' Rwy 1331'
MISSED APCH: Climb on SCV VOR R-336. At D2.4 ISV turn RIGHT heading 111° to intercept and follow SCV VOR R-066 to PRAOS, climbing to 3000' and hold or follow ATC instruction. MAX 220 KT.				
Alt Set: hPa	Rwy Elev: 48 hPa	Trans level: By ATC	Trans alt: 5000'	



Gnd speed-Kts	70	90	100	120	140	160	HIALS-II 	D2.4 ISV on 112.3 R-336
GS	3.00°	372	478	531	637	743		

Std/State STRAIGHT-IN LANDING
CAT II ILS
 AB
RA 107'
 DA(H) **1431'**(100')

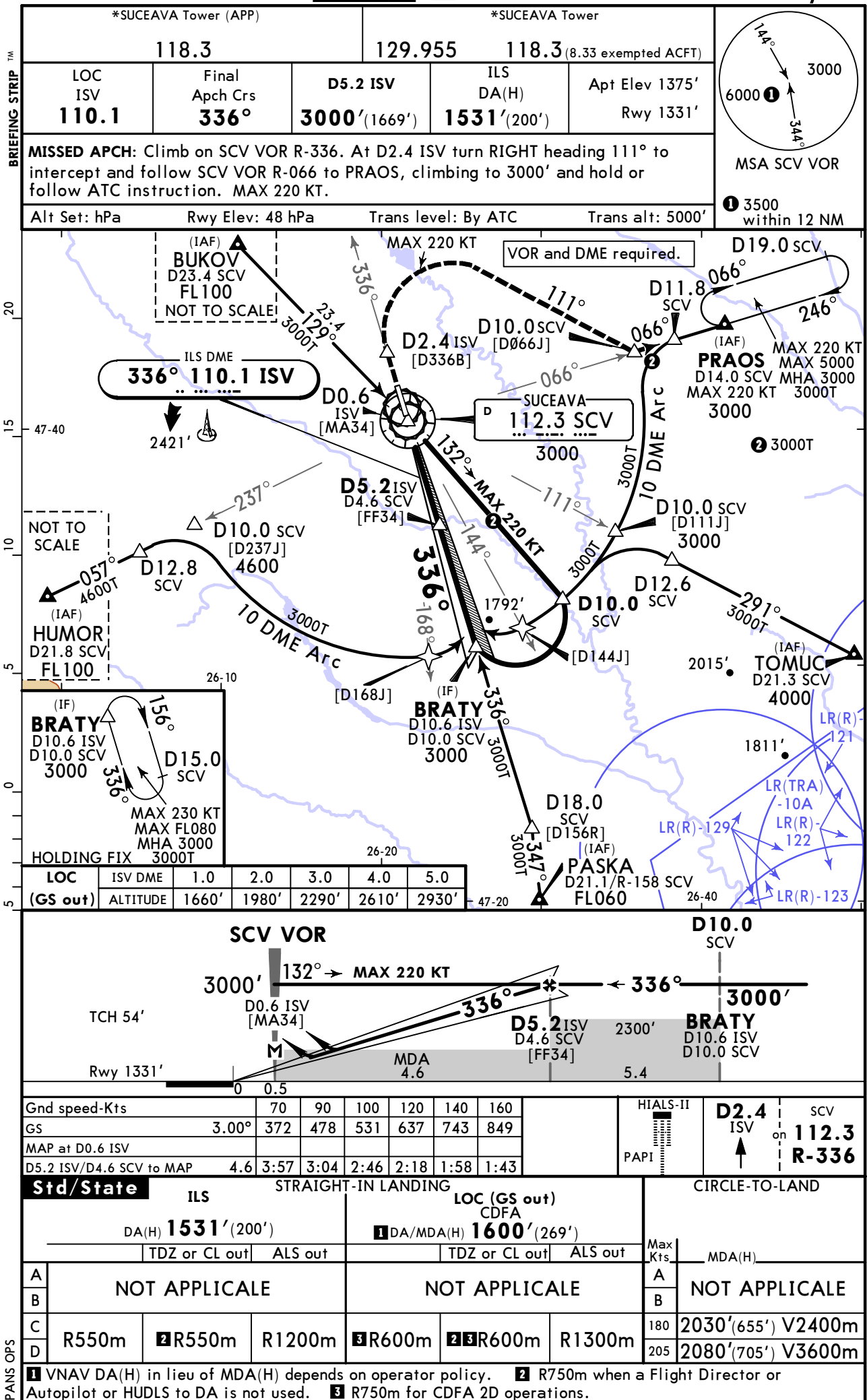
R300m

PANS OPS

LRSV/SCV
STEFAN CEL MARE

JEPPESEN
9 JUN 23
Eff 15 Jun **11-2** **CAT C & D**

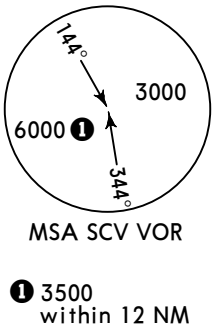
SUCEAVA, ROMANIA
ILS or LOC Y Rwy 34



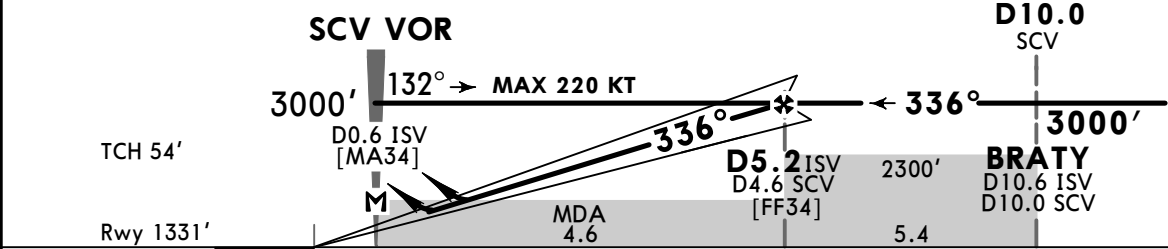
*SUCEAVA Tower (APP)		*SUCEAVA Tower		
118.3		129.955	118.3 (8.33 exempted ACFT)	
LOC ISV	Final Apch Crs	D5.2 ISV	ILS DA(H)	Apt Elev 1375'
110.1	336°	3000' (1669')	1531' (200')	Rwy 1331'

MISSED APCH: Climb on SCV VOR R-336. At D2.4 ISV turn RIGHT heading 111° to intercept and follow SCV VOR R-066 to PRAOS, climbing to 3000' and hold or follow ATC instruction. MAX 220 KT.

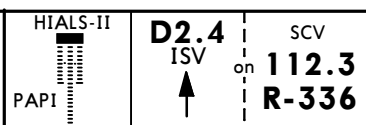
Alt Set: hPa Rwy Elev: 48 hPa Trans level: By ATC Trans alt: 5000'



LOC	ISV DME	1.0	2.0	3.0	4.0	5.0
(GS out)	ALTITUDE	1660'	1980'	2290'	2610'	2930'



Gnd speed-Kts	70	90	100	120	140	160
GS	3.00°	372	478	531	637	849
MAP at D0.6 ISV						
D5.2 ISV/D4.6 SCV to MAP	4.6	3:57	3:04	2:46	2:18	1:58



PANS OPS	Std/State		ILS				STRAIGHT-IN LANDING				LOC (GS out)		CIRCLE-TO-LAND		
	A	B	DA(H)	TDZ or CL out	ALS out	DA(MDA)(H)	TDZ or CL out	ALS out	DA(H)	TDZ or CL out	ALS out	Max Kts	MDA(H)	A	B
			1531'(200')			1600'(269')									
			NOT APPLICALE			NOT APPLICALE									
			R550m	R550m	R1200m	R600m	R600m	R1300m			180	2030'(655') V2400m			
											205	2080'(705') V3600m			

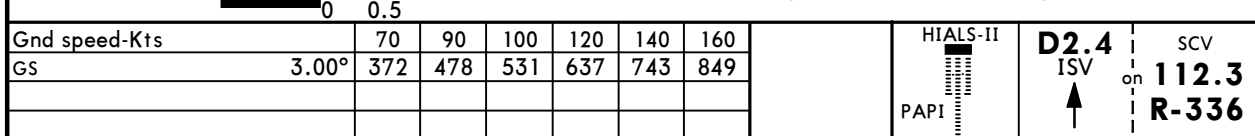
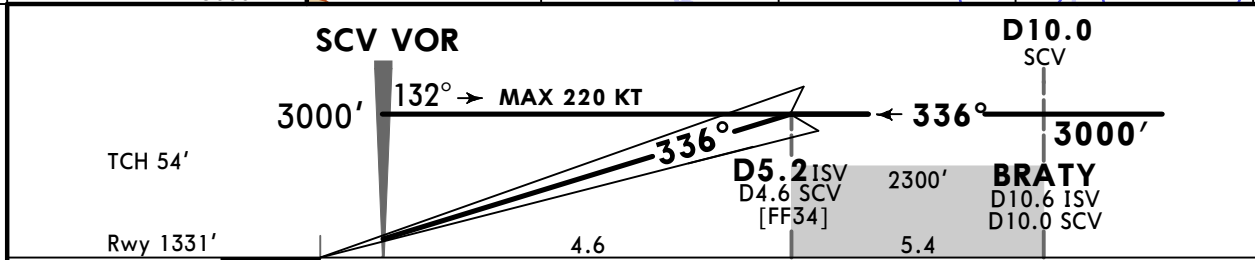
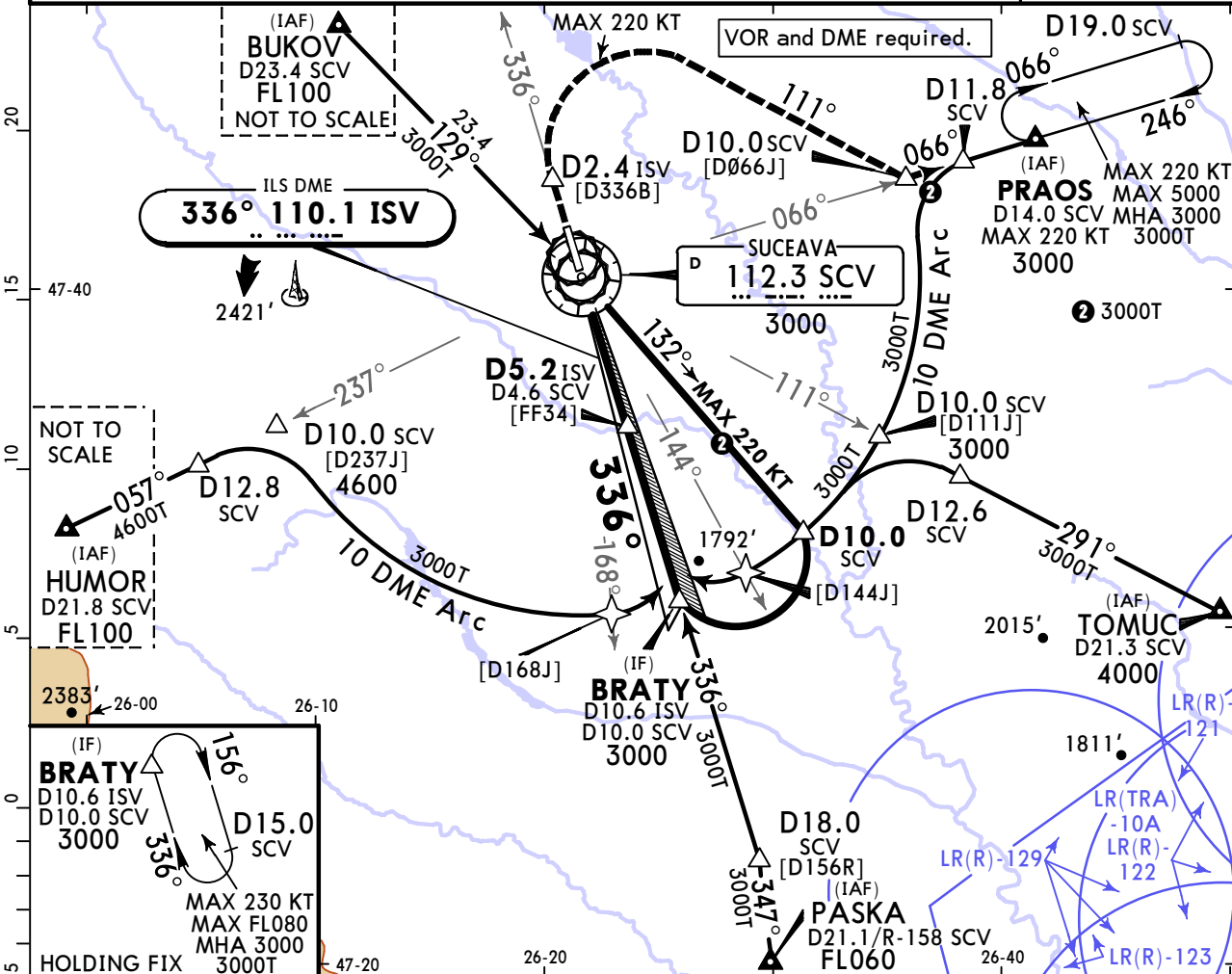
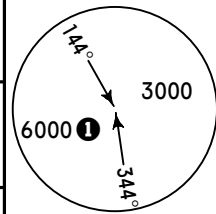
1 VNAV DA(H) in lieu of MDA(H) depends on operator policy. 2 R750m when a Flight Director or Autopilot or HUDLS to DA is not used. 3 R750m for CDFA 2D operations.

LRSV/SCV
STEFAN CEL MARE

9 JUN 23
Eff 15 Jun **(11-2A)** CAT C & D

SUCEAVA, ROMANIA
CAT II ILS Y Rwy 34

*SUCEAVA Tower (APP)		*SUCEAVA Tower		
118.3		129.955	118.3 (8.33 exempted ACFT)	
LOC ISV 110.1	Final Apch Crs 336°	D5.2 ISV 3000' (1669')	CAT II ILS RA/DA(H) Refer to Minimums	Apt Elev 1375' Rwy 1331'
MISSED APCH: Climb on SCV VOR R-336. At D2.4 ISV turn RIGHT heading 111° to intercept and follow SCV VOR R-066 to PRAOS, climbing to 3000' and hold or follow ATC instruction. MAX 220 KT.				
Alt Set: hPa	Rwy Elev: 48 hPa	Trans level: By ATC	Trans alt: 5000'	



Std/State	STRAIGHT-IN LANDING	
	CAT II ILS	
	C RA 107' DA(H) 1431'(100')	D RA 111' DA(H) 1435'(104')

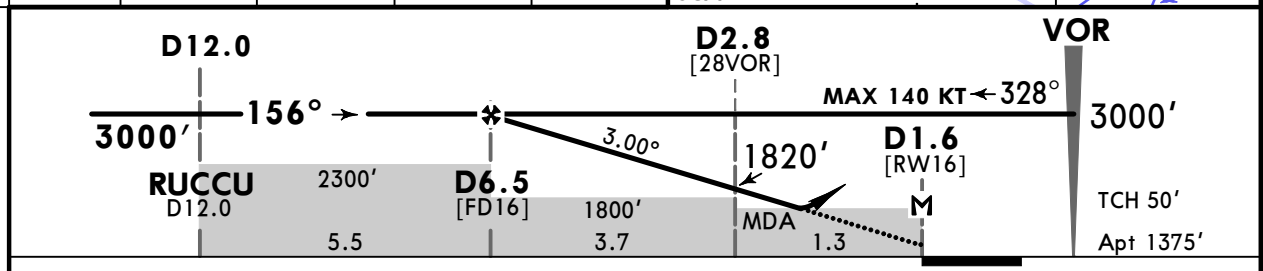
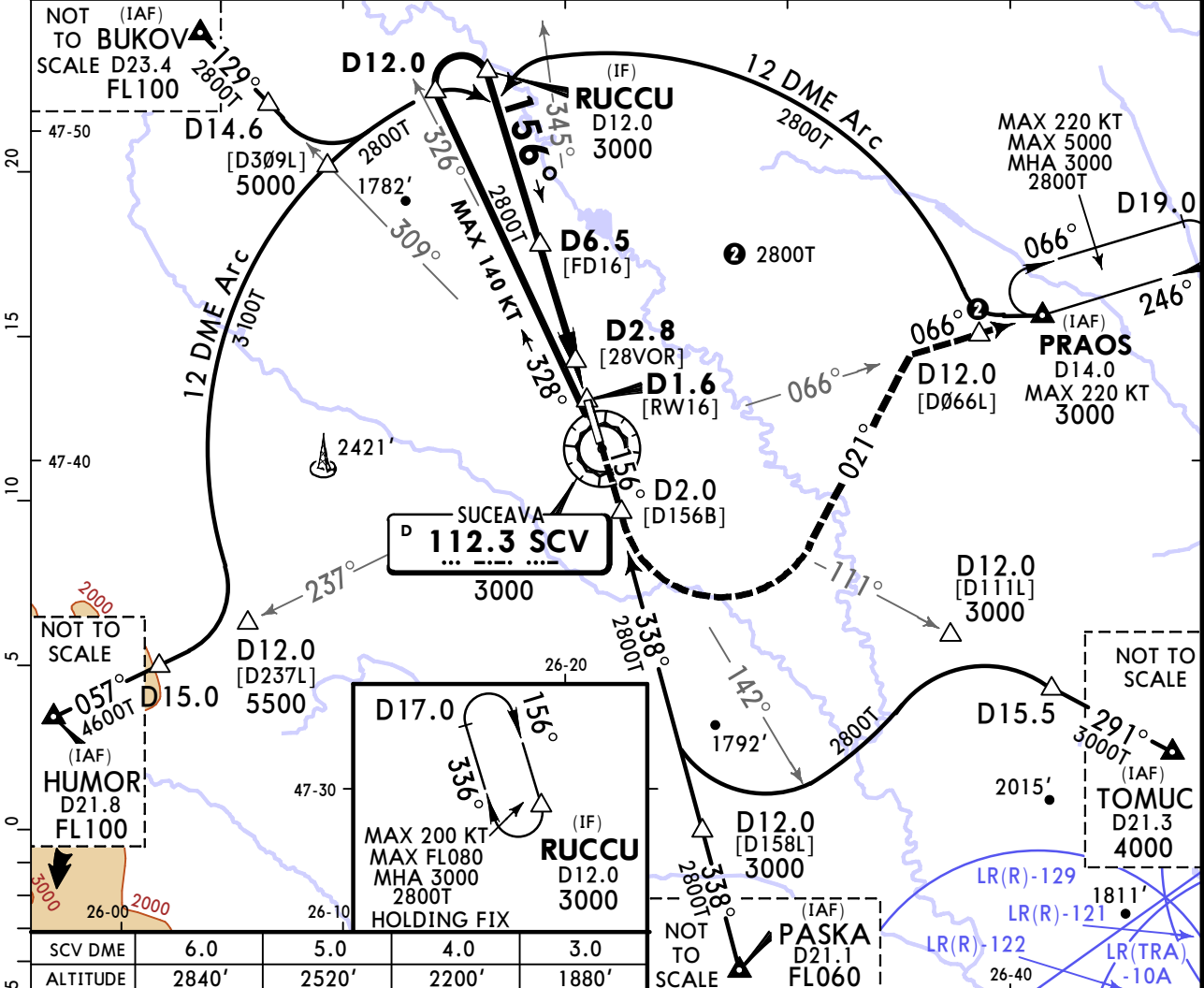
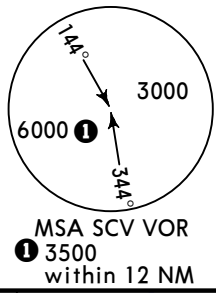
R300m
■ CAT D requires autoland or HUDLS, otherwise: R350m.

LRSV/SCV
STEFAN CEL MARE

JEPPESEN
9 JUN 23
Eff 15 Jun 13-1
CAT A & B

SUCEAVA, ROMANIA
VOR Z Rwy 16

*SUCEAVA Tower (APP) 118.3		*SUCEAVA Tower 129.955 118.3 (8.33 exempted ACFT)		
VOR SCV 112.3	Final Apch Crs 156°	D6.5 3000' (1625')	DA/MDA(H) (CONDITIONAL) 1670' (295')	Apt Elev 1375'
MISSED APCH: Climb on R-336 (156°) until SCV VOR, then follow R-156. At D2.0 turn LEFT heading 021° to intercept and follow R-066 to PRAOS, climbing to 3000' and hold or follow ATC instruction. MAX 220 KT.				
DME required. Alt Set: hPa Apt Elev: 49 hPa Trans level: By ATC Trans alt: 5000'				



Gnd speed-Kts	70	90	100	120	140	160	HIALS PAPI Refer to Missed Apch above
Descent Angle 3.00°	372	478	531	637	743	849	
MAP at D1.6							
D6.5 to MAP	5.0	4:17	3:20	3:00	2:30	2:09	1:53

Std/State	STRAIGHT-IN LANDING		CIRCLE-TO-LAND	
	With D2.8 CDFA	W/o D2.8 CDFA	Max Kts	MDA(H)
	DA/MDA(H) 1670' (295')	DA/MDA(H) 1800' (425')	100	1840' (465') V1500m
A	ALS out R900m	ALS out R1400m	135	1880' (505') V1600m
B				
C	NOT APPLICALE	NOT APPLICALE		NOT APPLICALE
D				

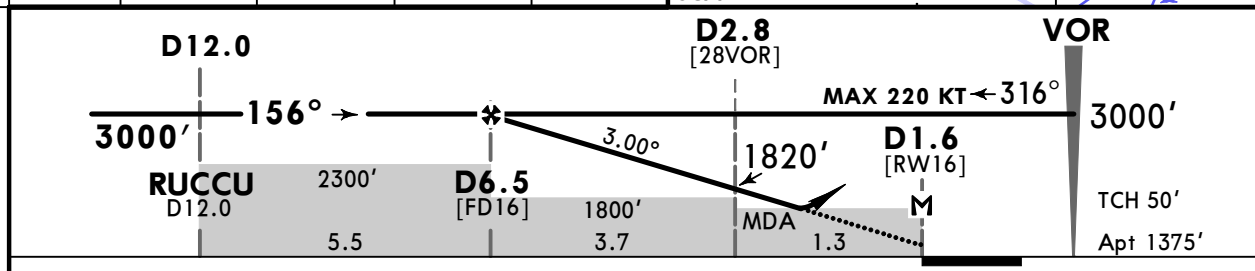
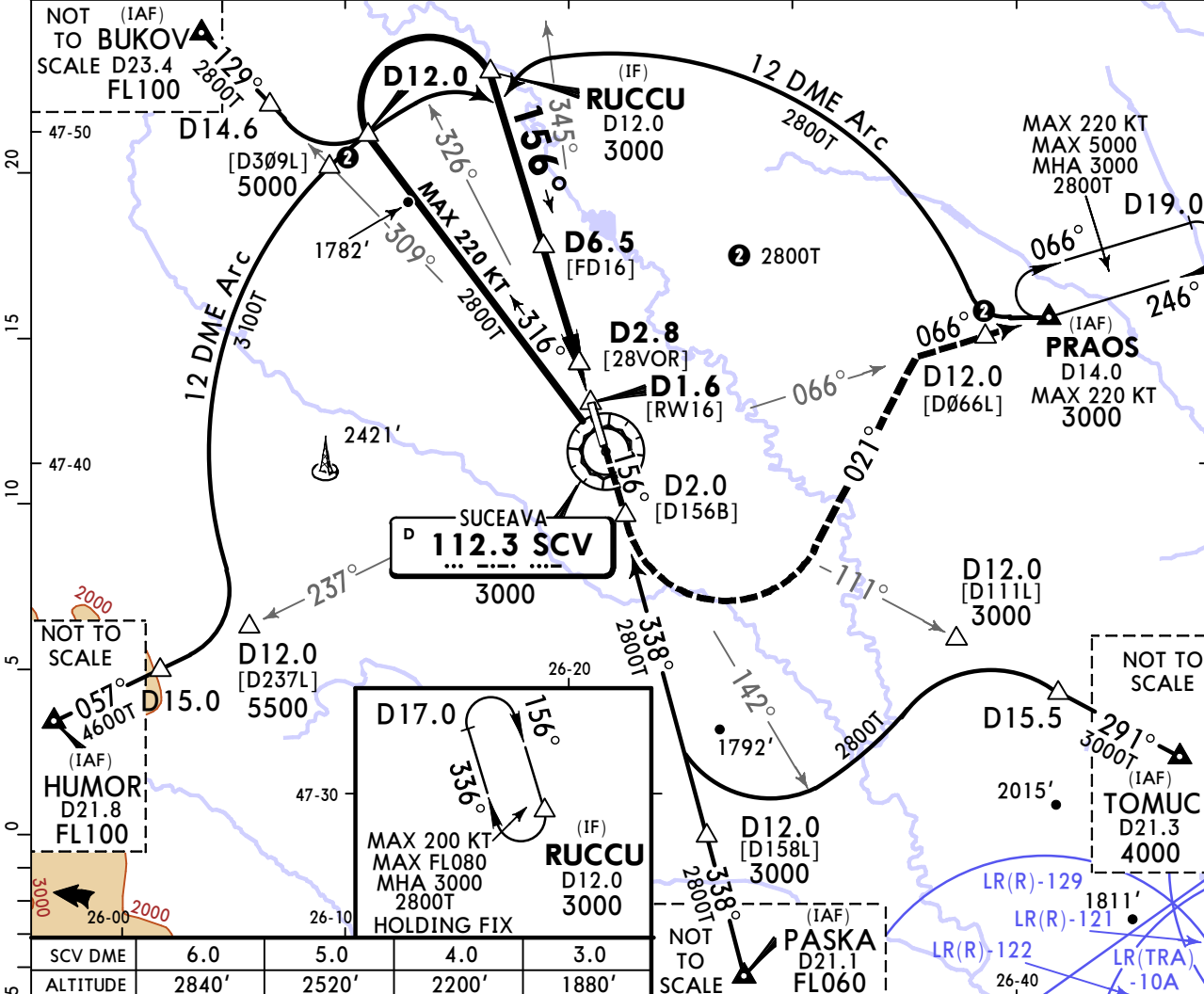
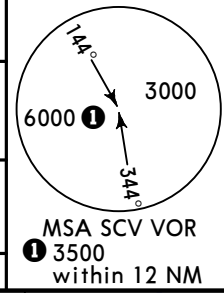
1 VNAV DA(H) in lieu of MDA(H) depends on operator policy.
CHANGES: New procedure. © JEPPESEN, 2023. ALL RIGHTS RESERVED.

LRSV/SCV
STEFAN CEL MARE

9 JUN 23
Eff 15 Jun **13-2** **CAT C & D**

SUCEAVA, ROMANIA
VOR Y Rwy 16

*SUCEAVA Tower (APP) 118.3		*SUCEAVA Tower 129.955 118.3 (8.33 exempted ACFT)		
VOR SCV 112.3	Final Apch Crs 156°	D6.5 3000' (1625')	DA/MDA(H) (CONDITIONAL) 1670' (295')	Apt Elev 1375'
MISSED APCH: Climb on R-336 (156°) until SCV VOR, then follow R-156. At D2.0 turn LEFT heading 021° to intercept and follow R-066 to PRAOS, climbing to 3000' and hold or follow ATC instruction. MAX 220 KT.				
DME required. Alt Set: hPa Apt Elev: 49 hPa Trans level: By ATC Trans alt: 5000'				



Gnd speed-Kts	70	90	100	120	140	160	HIALS PAPI Refer to Missed Apch above
Descent Angle 3.00°	372	478	531	637	743	849	
MAP at D1.6							
D6.5 to MAP	5.0	4:17	3:20	3:00	2:30	2:09	1:53

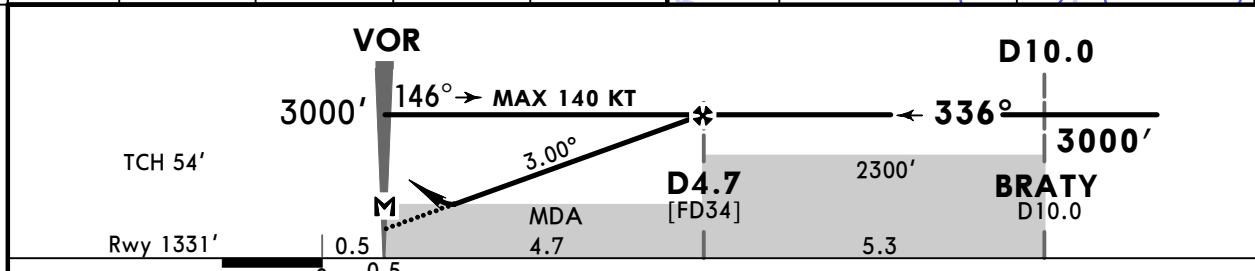
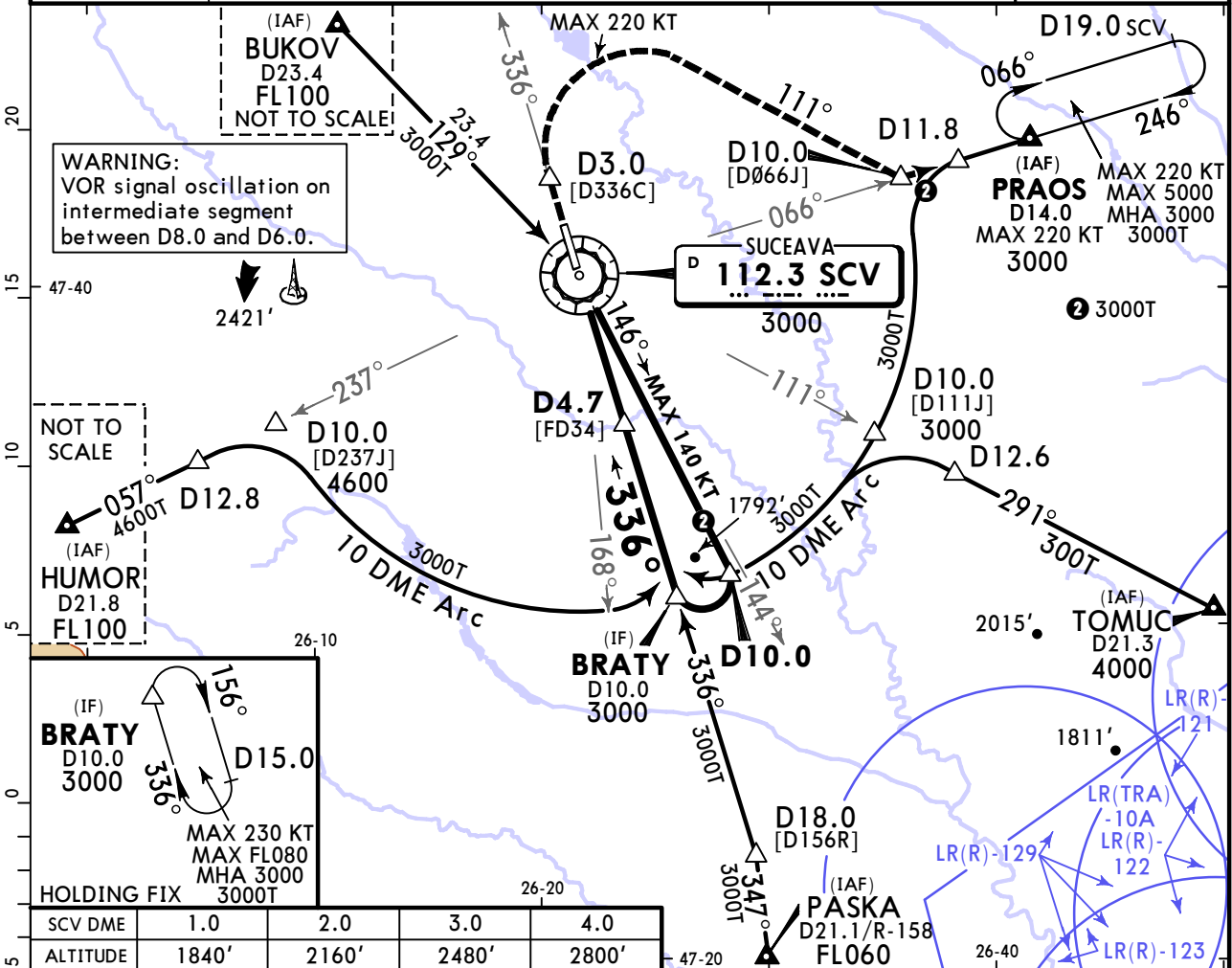
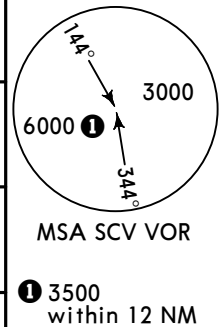
PANS OPS	Std/State STRAIGHT-IN LANDING				CIRCLE-TO-LAND		
	With D2.8 CDFA DA/MDA(H) 1670' (295')		W/o D2.8 CDFA DA/MDA(H) 1800' (425')		Max Kts	MDA(H)	
	ALS out		ALS out				
	A	NOT APPLICABLE		NOT APPLICABLE		A	NOT APPLICABLE
	B	NOT APPLICABLE		NOT APPLICABLE		B	NOT APPLICABLE
C	R900m	R1400m	R1600m	R2000m	180	2030' (655') V2400m	
D					205	2080' (705') V3600m	

LRSV/SCV
STEFAN CEL MARE

JEPPESEN
9 JUN 23
Eff 15 Jun **13-3** **CAT A & B**

SUCEAVA, ROMANIA
VOR Z Rwy 34

*SUCEAVA Tower (APP)		*SUCEAVA Tower		
118.3		129.955	118.3 (8.33 exempted ACFT)	
VOR SCV 112.3	Final Apch Crs 336°	D4.7 3000' (1669')	DA/MDA(H) Refer to Minimums	Apt Elev 1375' Rwy 1331'
MISSED APCH: Climb on R-336. At D3.0 turn RIGHT heading 111° to intercept and follow R-066 to PRAOS, climbing to 3000' and hold or follow ATC instruction. MAX 220 KT.				
DME required.	Alt Set: hPa	Rwy Elev: 48 hPa	Trans level: By ATC	Trans alt: 5000'



Gnd speed-Kts	70	90	100	120	140	160
Descent Angle 3.00°	372	478	531	637	743	849
MAP at VOR						
D4.7 to MAP	4.7	4:02	3:08	2:49	2:21	1:46



PANS OPS	Std/State STRAIGHT-IN LANDING			CIRCLE-TO-LAND	
	CDFA				
	1 DA/MDA(H) A: 1590' (259') B: 1610' (279')				
		TDZ or CL out	ALS out	Max Kts	MDA(H)
A	3 R600m	2 3 R600m	R1300m	100	1840' (465') V1500m
B				135	1880' (505') V1600m
C	NOT APPLICALE			C	NOT APPLICALE
D	NOT APPLICALE			D	NOT APPLICALE

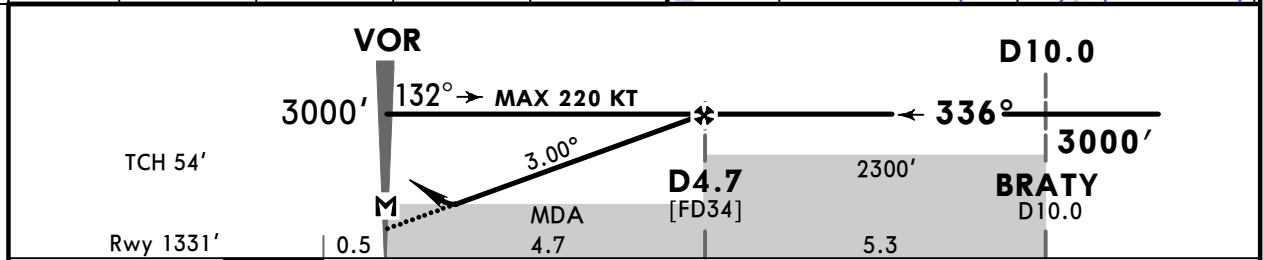
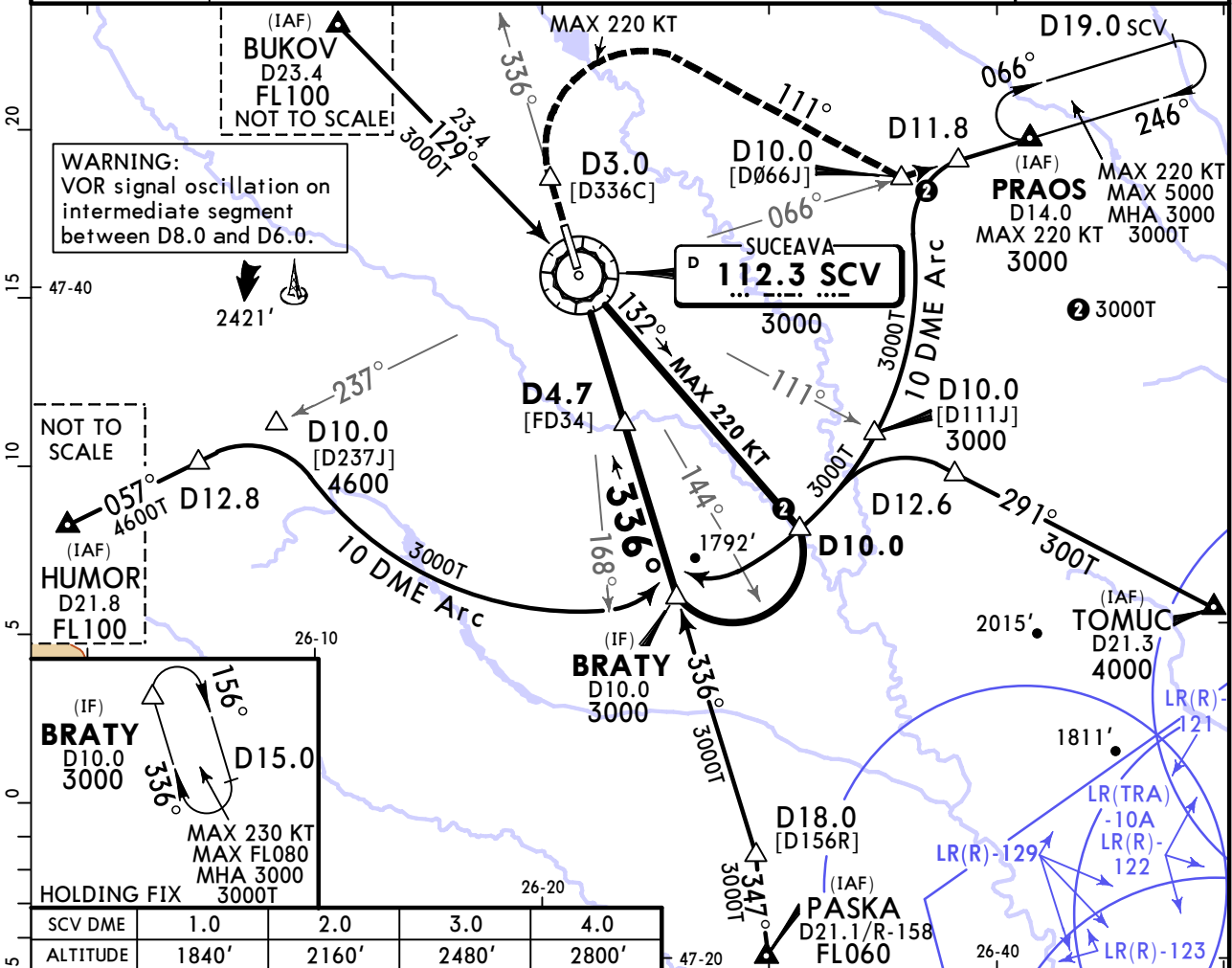
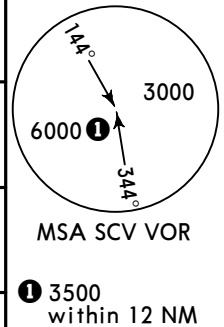
1 VNAV DA(H) in lieu of MDA(H) depends on operator policy. 2 R750m when a Flight Director or Autopilot or HUDLS to DA is not used. 3 R750m for CDFA 2D operations.

LRSV/SCV
STEFAN CEL MARE

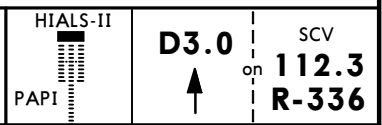
JEPPESEN
9 JUN 23
Eff 15 Jun **13-4** **CAT C & D**

SUCEAVA, ROMANIA
VOR Y Rwy 34

*SUCEAVA Tower (APP)		*SUCEAVA Tower		
118.3		129.955	118.3 (8.33 exempted ACFT)	
VOR SCV 112.3	Final Apch Crs 336°	D4.7 3000' (1669')	DA/MDA(H) Refer to Minimums	Apt Elev 1375' Rwy 1331'
MISSED APCH: Climb on R-336. At D3.0 turn RIGHT heading 111° to intercept and follow R-066 to PRAOS, climbing to 3000' and hold or follow ATC instruction. MAX 220 KT.				
DME required.	Alt Set: hPa	Rwy Elev: 48 hPa	Trans level: By ATC	Trans alt: 5000'



Gnd speed-Kts	70	90	100	120	140	160
Descent Angle 3.00°	372	478	531	637	743	849
MAP at VOR						
D4.7 to MAP	4.7	4:02	3:08	2:49	2:21	2:01



Std/State	STRAIGHT-IN LANDING			CIRCLE-TO-LAND		
	CDFA					
1 DA/MDA(H) C: 1630'(299') D: 1670'(339')						
TDZ or CL out			ALS out			
A	NOT APPLICALE			Max Kts	MDA(H)	
B	NOT APPLICALE			A	NOT APPLICALE	
C	3 R650m	2 3 R650m	R1400m	180	2030' (655')	V2400m
D	R800m	R800m	R1500m	205	2080' (705')	V3600m

1 VNAV DA(H) in lieu of MDA(H) depends on operator policy. 2 R750m when a Flight Director or Autopilot or HUDLS to DA is not used. 3 R750m for CDFA 2D operations.

Chart changes since cycle 15-2023

ADD = added chart, REV = revised chart, DEL = deleted chart.

ACT	PROCEDURE IDENT	INDEX	REV DATE	EFF DATE
SUCEAVA, (STEFAN CEL MARE - LRSV)				

TERMINAL CHART CHANGE NOTICES

Chart Change Notices for Airport LRSV

Type: Terminal

Effectivity: Temporary

Begin Date: Immediately

End Date: 20230930

Ground movement and parking stands for APRON 1 temporary suspended. Refer to 10-9 and Airport Briefing Pages.