

List of pages in this Trip Kit

Trip Kit Index

Airport Information For LRTC

Terminal Charts For LRTC

Revision Letter For Cycle 16-2023

Change Notices

Notebook

General Information

Location: TULCEA ROU
ICAO/IATA: LRTC / TCE
Lat/Long: N45° 03.77', E028° 42.87'
Elevation: 200 ft

Airport Use: Public
Daylight Savings: Observed
UTC Conversion: -2:00 = UTC
Magnetic Variation: 6.0° E

Fuel Types: 100 Octane (LL), Jet A-1
Customs: Yes
Airport Type: IFR
Landing Fee: Yes
Control Tower: Yes
Jet Start Unit: No
LLWS Alert: No
Beacon: No

Sunrise: 0401 Z
Sunset: 1549 Z

Runway Information

Runway: 16
Length x Width: 6759 ft x 148 ft
Surface Type: asphalt
TDZ-Elev: 200 ft
Lighting: Edge, ALS, Centerline

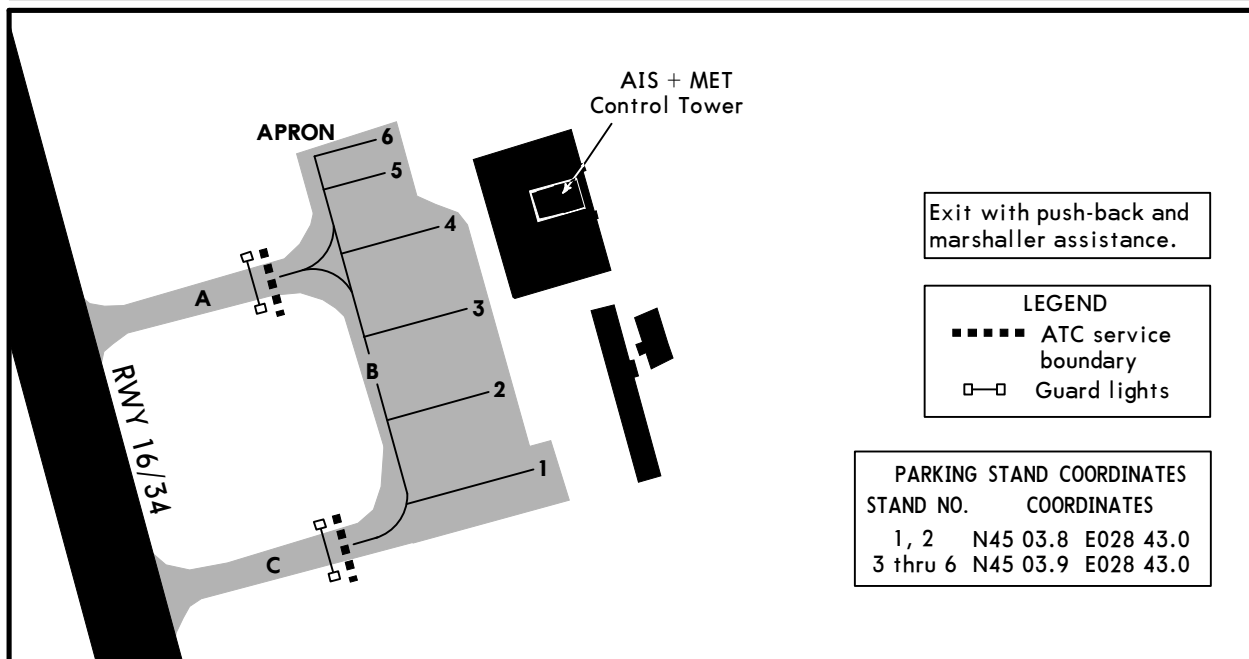
Runway: 34
Length x Width: 6759 ft x 148 ft
Surface Type: asphalt
TDZ-Elev: 175 ft
Lighting: Edge, ALS, Centerline, TDZ
Displaced Threshold: 220 ft

Communication Information

Tulcea Tower: 120.300 Secondary
Tulcea Tower: 119.755
Tulcea Approach: 119.755
Tulcea Approach: 120.300 Secondary

CONSTRUCTION WORKS ON APRON AND TWY

REFER ALSO TO LATEST NOTAMS



Exit with push-back and marshaller assistance.

LEGEND
■■■■■ ATC service boundary
□—□ Guard lights

STAND NO.	COORDINATES
1, 2	N45 03.8 E028 43.0
3 thru 6	N45 03.9 E028 43.0

STAGE II

Twy C will be in service. The area is delimited, marked and lighted accordingly. Also, the Apron parking stands position has been modified.

LRTC/TCE

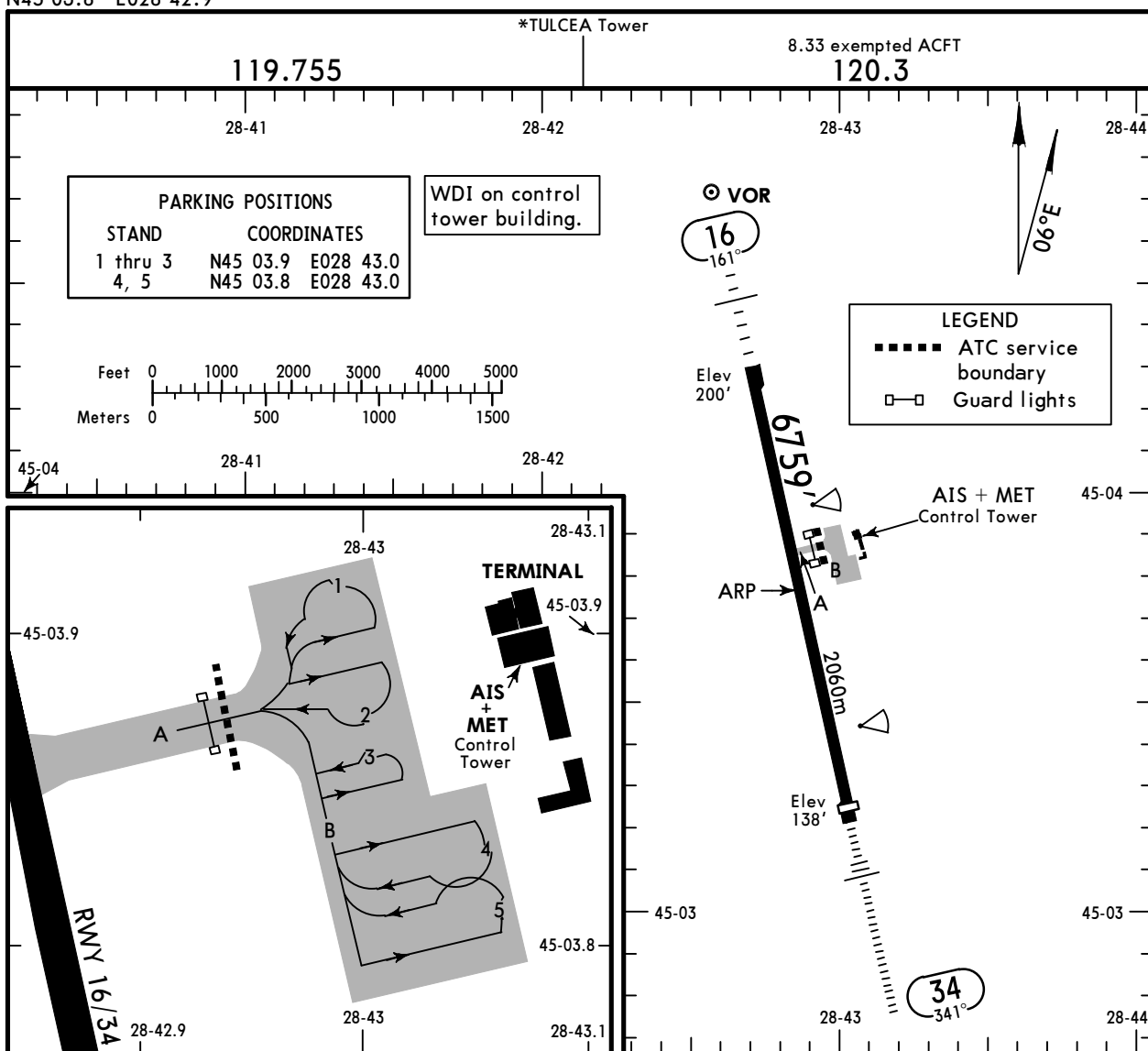
Apt Elev **200'**
N45 03.8 E028 42.9



15 JAN 21 **(10-9)** Eff 28 Jan

TULCEA, ROMANIA

DELTA DUNARII



ADDITIONAL RUNWAY INFORMATION

RWY	HIRL (60m) CL (15m) HIALS PAPI-L (3.0°) RVR	USABLE LENGTHS		TAKE-OFF	WIDTH
		Threshold	Glide Slope		
16	HIRL (60m) CL (15m) HIALS PAPI-L (3.0°) RVR				148'
34	HIRL (60m) CL (15m) ALSF-II TDZ PAPI-L (3.0°) ①	6539' 1993m	5749' 1752m		45m

① RVR

Standard

TAKE-OFF

	Low Visibility Take-off			Day: RL & RCLM Night: RL or CL	Day: RL or RCLM Night: RL or CL	Adequate vis ref (Day only)
	HIRL, CL & relevant RVR	RL, CL & relevant RVR	RL & CL			
A						
B	TDZ, MID, RO	TDZ, MID, RO		RVR 300m	400m	500m
C	RVR 125m	RVR 150m	RVR 200m	RVR 300m	400m	500m
D						

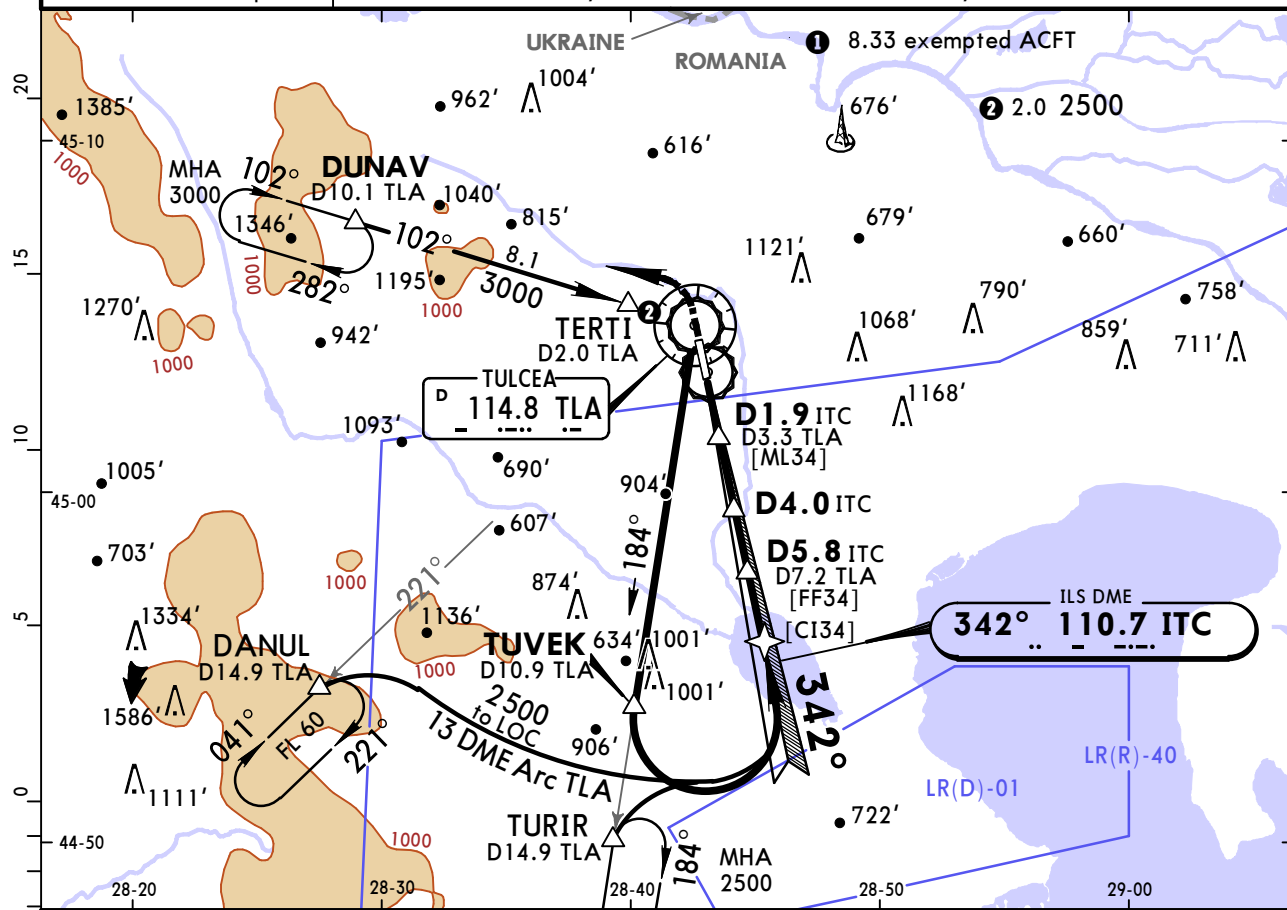
LRTC/TCE DELTA DUNARII

JEPPESEN
29 NOV 19 **11-1** Eff 5 Dec

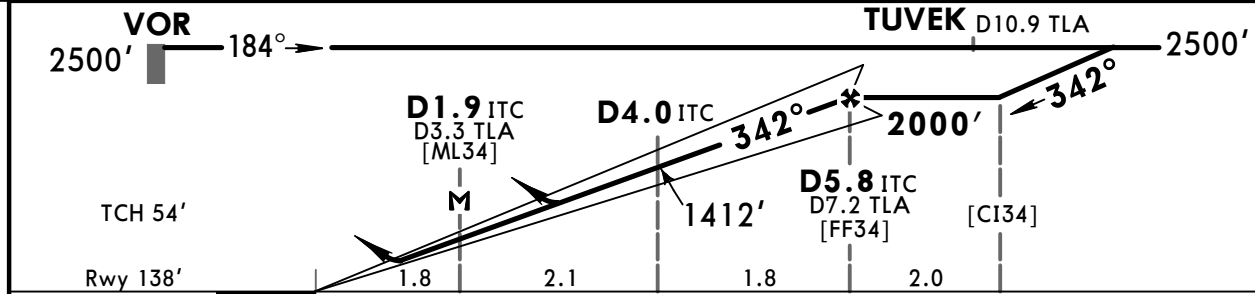
TULCEA, ROMANIA ILS Rwy 34

Approach Control through Tower *TULCEA Tower					
119.755		120.3			
LOC ITC 110.7	Final Apch Crs 342°	GS D5.8 ITC 2000' (1862')	ILS DA(H) 338' (200')	Apt Elev 200' Rwy 138'	
MISSED APCH: Climb STRAIGHT AHEAD on Rwy track to 1000', then turn LEFT and join DUNAV holding at 3000'.					

VOR and DME required. Alt Set: hPa Rwy Elev: 5 hPa Trans level: By ATC Trans alt: 3000'



LOC (GS out)	ITC DME ALTITUDE	3.0 1100'	4.0 1420'	5.0 1730'
--------------	------------------	-----------	-----------	-----------



Gnd speed-Kts	70	90	100	120	140	160	ALSF-II PAPI 	1000' RWY track	
ILS GS or LOC Descent Angle	3.00°	372	478	531	637	743			849
MAP at D1.9 ITC/D3.3 TLA									

Standard STRAIGHT-IN LANDING RWY 34					CIRCLE-TO-LAND		
ILS DA(H) 338' (200')				LOC (GS out) CDFA DA/MDA(H) 740' (602')			
FULL		TDZ or CL out	ALS out	ALS out		Max Kts	MDA(H) VIS
A				RVR 1500m		100	1200' (1000') 1500m
B	RVR 550m	RVR 550m I	RVR 1200m			135	1200' (1000') 1600m
C				RVR 2100m	RVR 2400m	180	1300' (1100') 2400m
D						205	1300' (1100') 3600m

I RVR 750m when a Flight Director or Autopilot or HUD to DA is not used.

CHANGES: None.

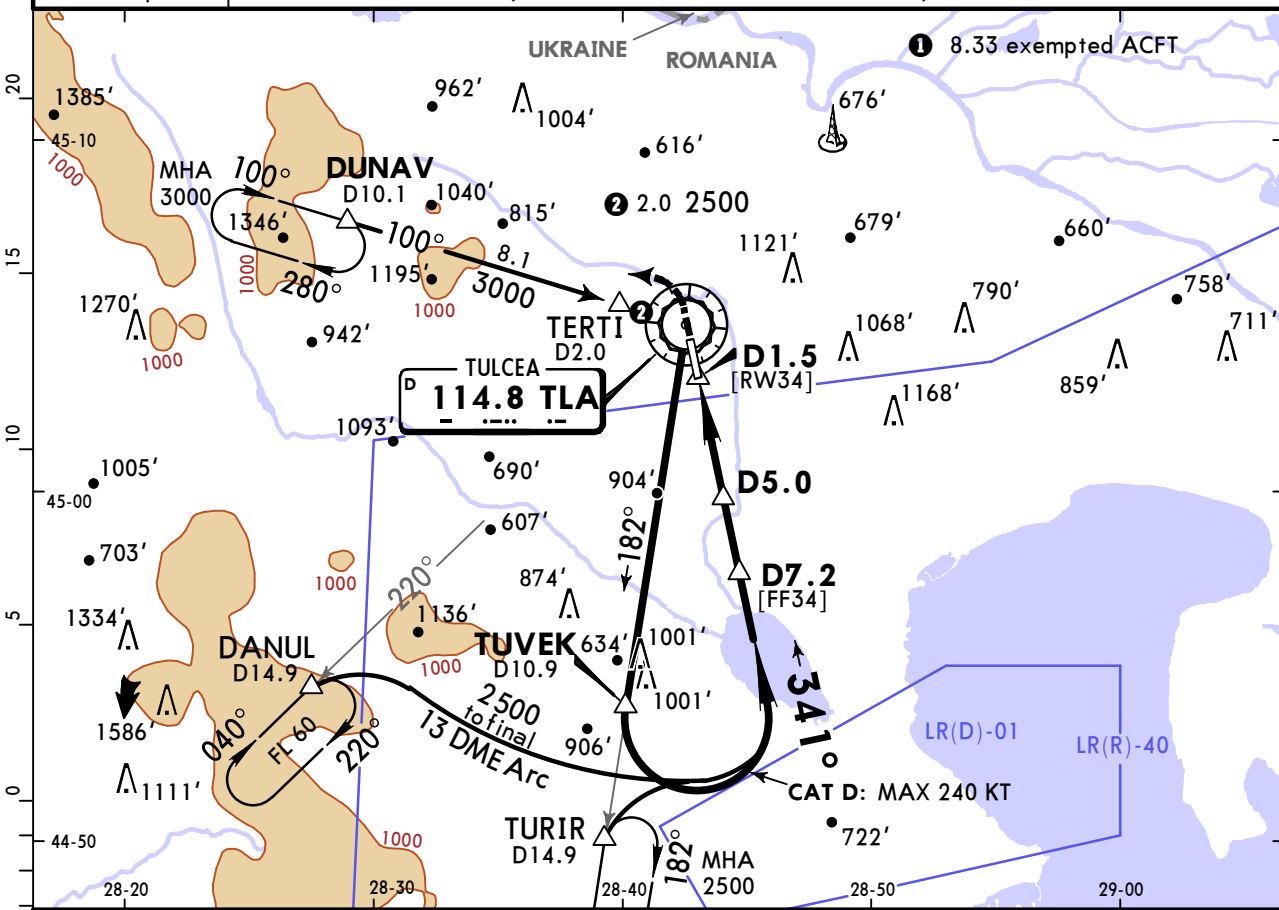
© JEPPESEN, 2007, 2019. ALL RIGHTS RESERVED.

LRTC/TCE DELTA DUNARII

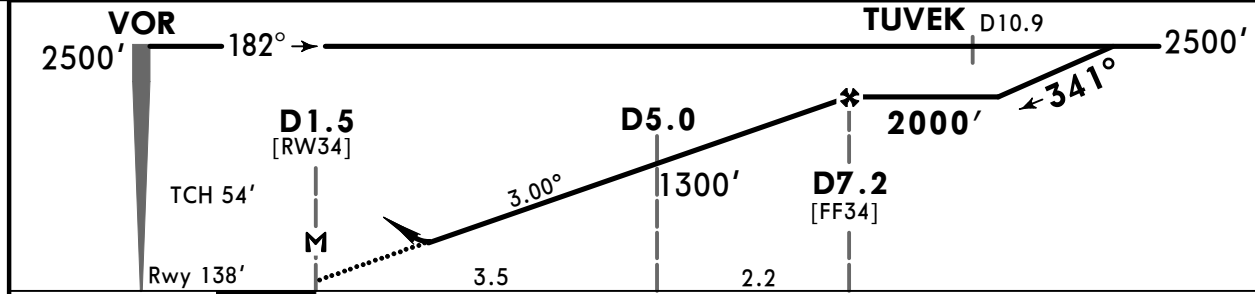
JEPPESEN
29 NOV 19 **(13-1)** Eff 5 Dec

TULCEA, ROMANIA VOR Rwy 34

Approach Control through Tower *TULCEA Tower					
119.755				120.3	
VOR TLA 114.8	Final Apch Crs 341°	D7.2 2000' (1862')	DA/MDA(H) 510' (372')	Apt Elev 200' Rwy 138'	
<p>MISSED APCH: Climb STRAIGHT AHEAD on Rwy track to 1000', then turn LEFT and join DUNAV holding at 3000'.</p>					
DME required.		Alt Set: hPa	Rwy Elev: 5 hPa	Trans level: By ATC	Trans alt: 3000'



TLA DME	3.0	4.0	5.0	6.0	7.0
ALTITUDE	664'	982'	1300'	1619'	1937'



Gnd speed-Kts	70	90	100	120	140	160		1000' on track	
Descent Angle	3.00°	372	478	531	637	743			849
MAP at D1.5									
D7.2 to MAP	5.7	4:53	3:48	3:25	2:51	2:27	2:08		

Standard		STRAIGHT-IN LANDING RWY 34		CIRCLE-TO-LAND	
CDFA					
DA/MDA(H) 510' (372')					
		ALS out		Max Kts	
A			RVR 1500m	100	MDA(H) 1200' (1000') VIS 1500m
B			RVR 1000m	135	MDA(H) 1200' (1000') VIS 1600m
C	RVR 1000m			180	MDA(H) 1300' (1100') VIS 2400m
D			RVR 1700m	205	MDA(H) 1470' (1270') VIS 3600m

PANS OPS

Chart changes since cycle 15-2023

ADD = added chart, REV = revised chart, DEL = deleted chart.

ACT	PROCEDURE IDENT	INDEX	REV DATE	EFF DATE
TULCEA, (DELTA DUNARII - LRTC)				

TERMINAL CHART CHANGE NOTICES

Chart Change Notices for Airport LRTC

Type: Terminal

Effectivity: Temporary

Begin Date: 20230323

End Date: Until Further Notice

Based on AIP AIRAC SUP 03/23, construction works on apron and TWY in progress. Refer to temporary chart 10-8 and latest NOTAMs.