

List of pages in this Trip Kit

Trip Kit Index

Airport Information For LYBT

Terminal Charts For LYBT

Revision Letter For Cycle 16-2023

Change Notices

Notebook

General Information

Location: BELGRADE SCG
ICAO/IATA: LYBT / BJY
Lat/Long: N44° 56.47', E020° 15.05'
Elevation: 281 ft

Airport Use: Military
Daylight Savings: Observed
UTC Conversion: -1:00 = UTC
Magnetic Variation: 5.0° E

Fuel Types: 100 Octane (LL), Jet A-1
Customs: Yes
Airport Type: IFR
Landing Fee: Yes
Control Tower: Yes
Jet Start Unit: No
LLWS Alert: No
Beacon: Yes

Sunrise: 0537 Z
Sunset: 1510 Z

Runway Information

Runway: 12L
Length x Width: 8209 ft x 148 ft
Surface Type: asphalt
TDZ-Elev: 268 ft
Lighting: Edge, ALS, REIL

Runway: 12R
Length x Width: 8235 ft x 148 ft
Surface Type: asphalt
TDZ-Elev: 267 ft
Lighting: Edge
Displaced Threshold: 235 ft

Runway: 30L
Length x Width: 8235 ft x 148 ft
Surface Type: asphalt
TDZ-Elev: 280 ft
Lighting: Edge, ALS, REIL

Runway: 30R
Length x Width: 8209 ft x 148 ft
Surface Type: asphalt
TDZ-Elev: 281 ft
Lighting: Edge

Communication Information

Batajnica Tower: 118.200 VHF-DF

Batajnica Approach: 126.050 VHF-DF

Batajnica Approach: 119.575 Secondary VHF-DF

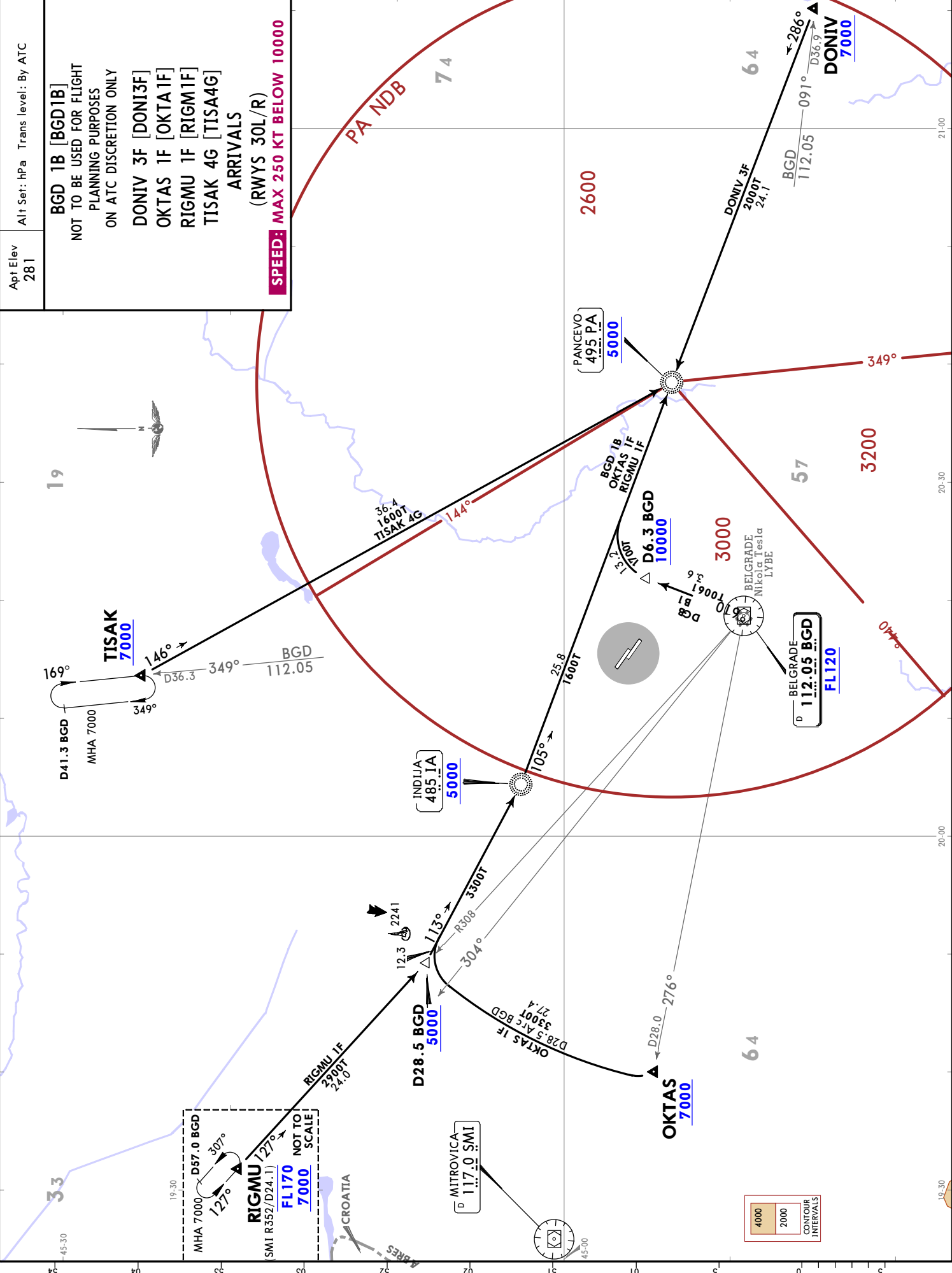
JEPPESSEN BELGRADE, SERBIA
 5 MAY 23 (20-2A) Eff 18 May
STAR

Alt Elev 281
 Apt Elev 281
 Alt Set: hPa Trans level: By ATC

BGD 1B [BGD1B]
 NOT TO BE USED FOR FLIGHT PLANNING PURPOSES ON ATC DISCRETION ONLY

DONIV 3F [DONI3F]
OKTAS 1F [OKTA1F]
RIGMU 1F [RIGM1F]
TISAK 4G [TISA4G]
ARRIVALS (RWYS 30L/R)
(SPEED: MAX 250 KT BELOW 10000)

LYBT/BJY
 BATAJNICA - PUJK - PILOT M. PAVLOVIC



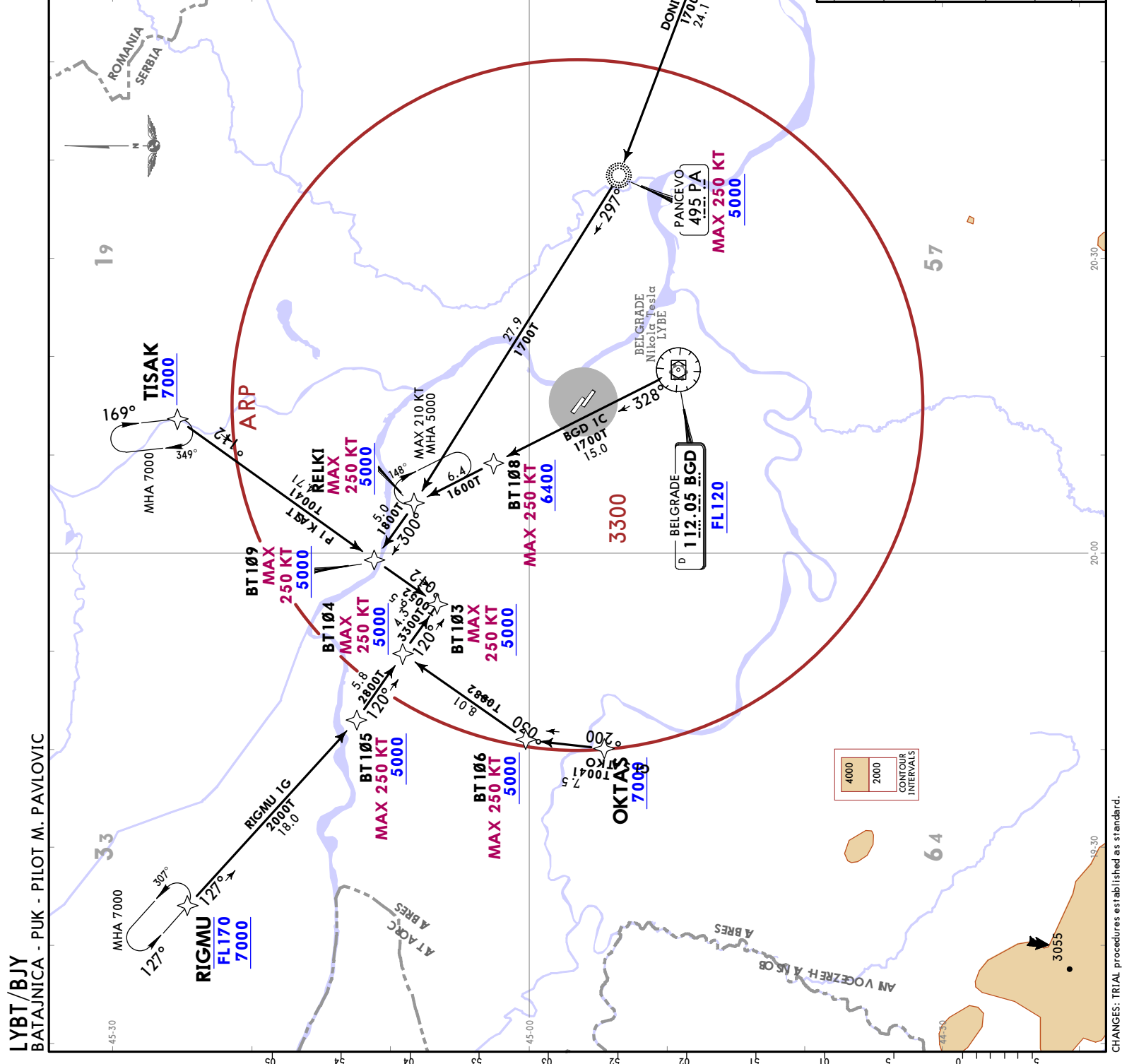
JEPPIENBELGRADE, SERBIA
 28 JUL 23 (20-2B) Eff 10 Aug
RNAV STAR

Apt Elev 281 RNP 1 Alt Set: hPa Trans level: By ATC

BEOGRAD 1C (BGD 1C) [BGD1C]
 DONIV 1P [DONI1P]
 OKTAS 1G [OKTA1G]
 RIGMU 1G [RIGM1G]
 TISAK 1P [TISA1P]
 RNP ARRIVALS
 (RWYS 12L/R)
SPEED: MAX 250 KT BELOW 10000

STAR	ROUTING
BGD 1C ①	BGD VOR (FL120+) - BT108 (K250+; 6400+) - RELKI (K250+; 5000+) - BT109 (K250+; 5000+) - BT103 (K250+; 5000+).
DONIV 1P	DONIV (7000+) - PA NDB (K250+; 5000+) - RELKI (K250+; 5000+) - BT109 (K250+; 5000+) - BT103 (K250+; 5000+).
OKTAS 1G	OKTAS (7000+) - BT106 (K250+; 5000+) - BT104 (K250+; 5000+) - BT103 (K250+; 5000+).
RIGMU 1G	RIGMU (FL170+; 7000+) - BT105 (K250+; 5000+) - BT104 (K250+; 5000+) - BT103 (K250+; 5000+).
TISAK 1P	TISAK (7000+) - BT109 (K250+; 5000+) - BT103 (K250+; 5000+).

① Not to be used for flight planning purposes. On ATC discretion only.

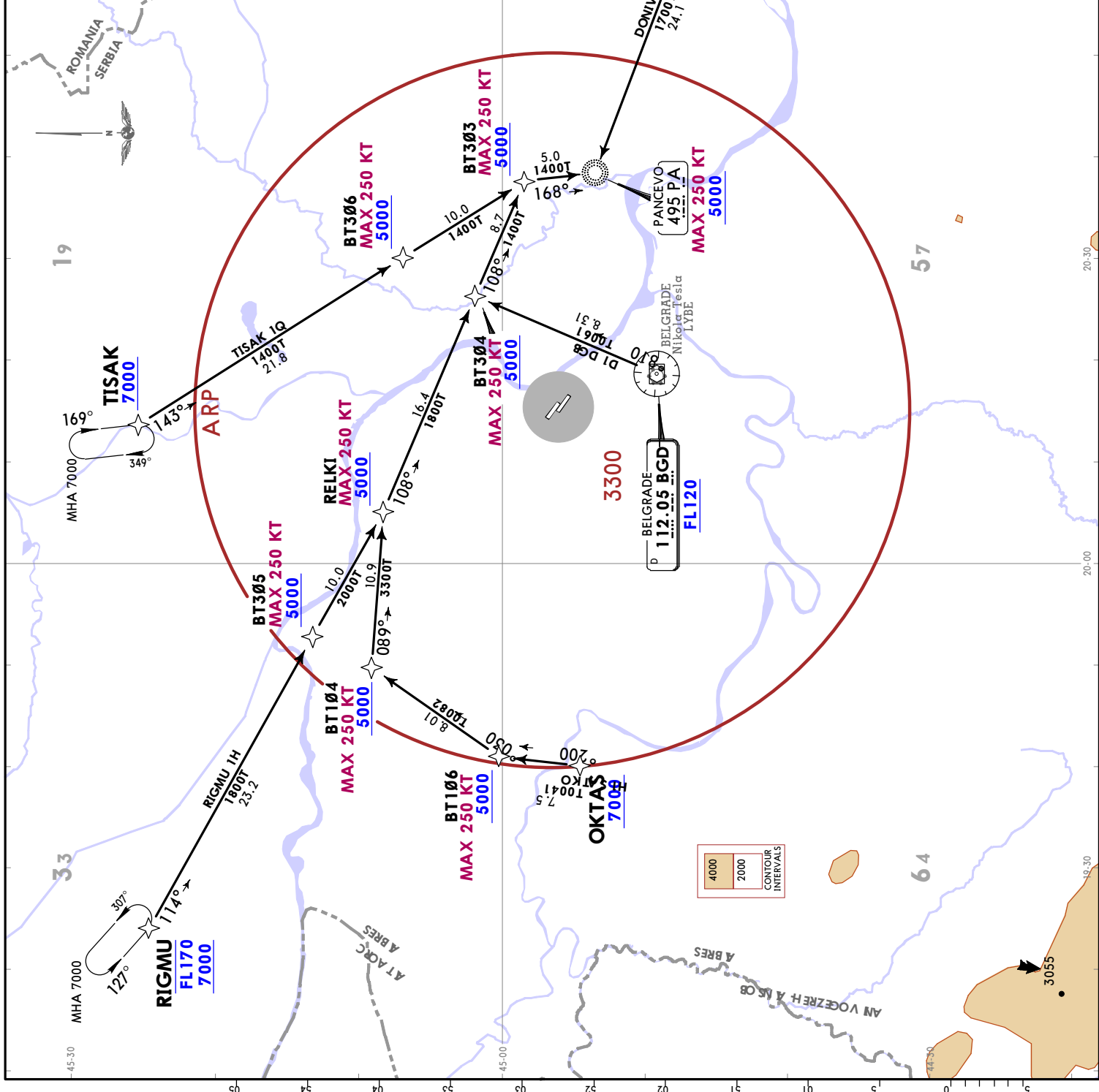


JEPPESEN BELGRADE, SERBIA
 28 JUL 23 (20-2C) Eff 10 Aug RNAV STAR

LYBT/BJY
 BATAJNICA - PUJK - PILOT M. PAVLOVIC

Apt Elev 281 RNP 1
 Alt Set: hPa Trans level: By ATC

BEOGRAD 1D (BGD 1D) [BGD1D]
 DONIV 1Q [DONI1Q]
 OKTAS 1H [OKTA1H]
 RIGMU 1H [RIGM1H]
 TISAK 1Q [TISA1Q]
 RNP ARRIVALS
 (RWYS 30L/R)
SPEED: MAX 250 KT BELOW 10000



STAR	ROUTING
BGD 1D ①	BGD VOR (FL120+) - BT304 (K250+; 5000+) - PA NDB (K250+; 5000+).
DONIV 1Q	DONIV (7000+) - PA NDB (K250+; 5000+).
OKTAS 1H	OKTAS (7000+) - BT106 (K250+; 5000+) - BT104 (K250+; 5000+) - RELKI (K250+; 5000+) - BT304 (K250+; 5000+) - BT303 (K250+; 5000+) - PA NDB (K250+; 5000+).
RIGMU 1H	RIGMU (FL170+; 7000+) - BT305 (K250+; 5000+) - RELKI (K250+; 5000+) - BT304 (K250+; 5000+) - BT303 (K250+; 5000+) - PA NDB (K250+; 5000+).
TISAK 1Q	TISAK (7000+) - BT306 (K250+; 5000+) - BT303 (K250+; 5000+) - PA NDB (K250+; 5000+).

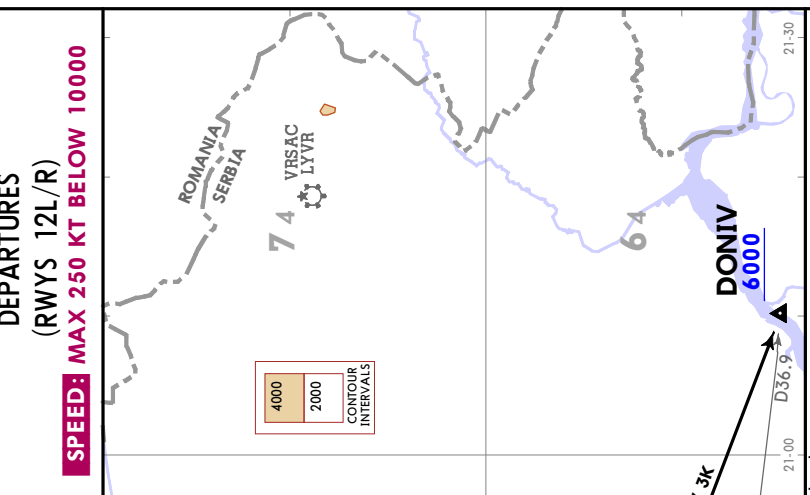
① Not to be used for flight planning purposes. On ATC discretion only.

Trans alt: 10000
 Due to interaction with other routes, pilots must ensure strict compliance with the specified climb profile, unless cleared by ATC.

Apt Elev 281

DONIV 3K [DONI3K]
LULIK 1A [LULI1A]
OKTAS 1A [OKTATA]
TISAK 1J [TISA1J]
TISAK 1K [TISA1K]

DEPARTURES (RWYS 12L/R)
SPEED: MAX 250 KT BELOW 10000

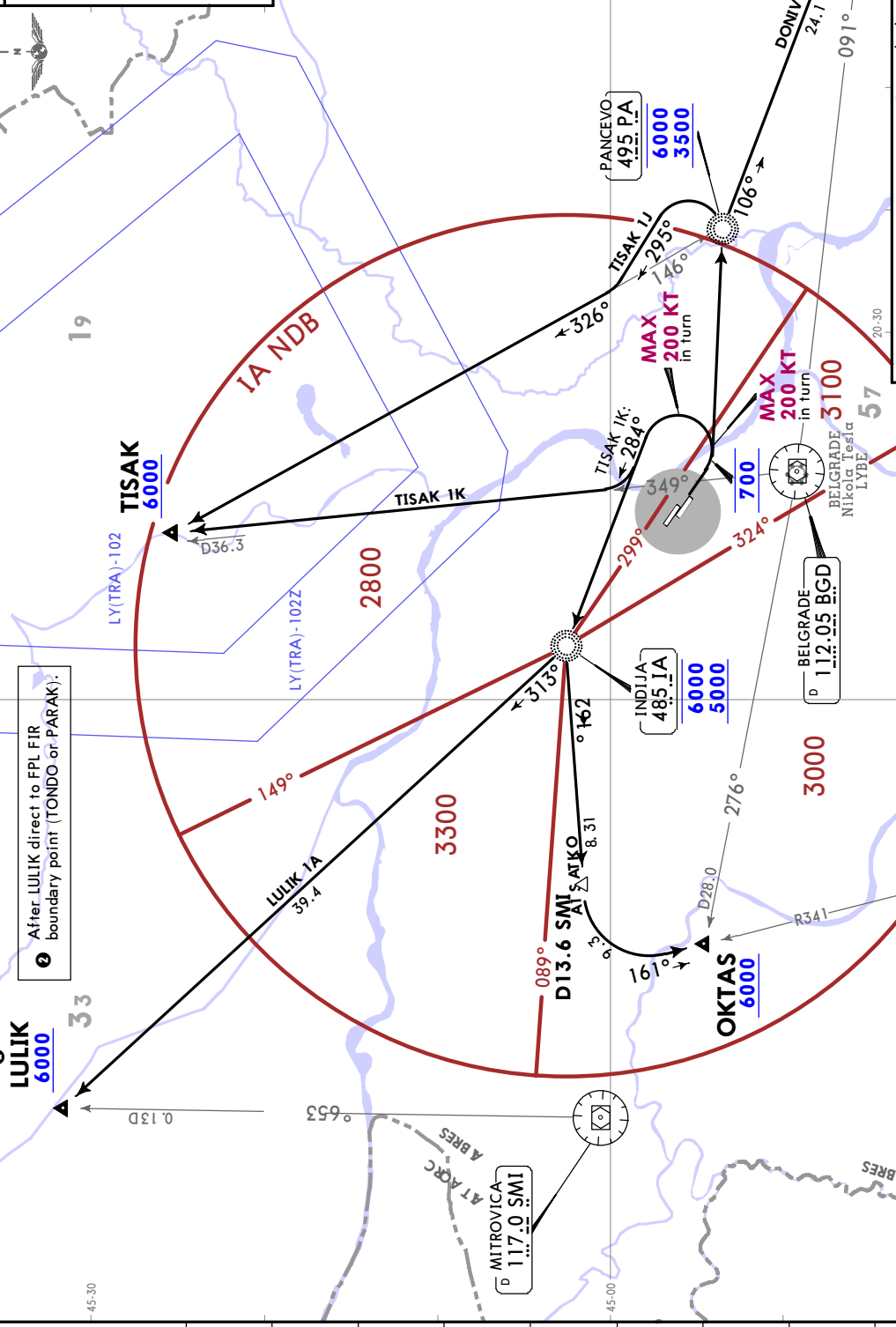


SID	ROUTING
DONIV 3K	Climb straight ahead, at 700 turn LEFT (MAX 200 KT) direct to PA NDB, 106° bearing to DONIV. Cross PA NDB between 3500 and 6000. Cross DONIV at or above 6000.
LULIK 1A	Climb straight ahead, at 700 turn LEFT (MAX 200 KT) direct to IA NDB, turn RIGHT, 313° bearing to LULIK. Cross IA NDB between 5000 and 6000. Cross LULIK at or above 6000.
OKTAS 1A	Climb straight ahead, at 700 turn LEFT (MAX 200 KT) direct to IA NDB, 261° bearing from IA NDB, at D13.6 SMI turn LEFT, intercept VAL R341 to OKTAS. Cross IA NDB between 5000 and 6000. Cross OKTAS at or above 6000.
TISAK 1J	Climb straight ahead, at 700 turn LEFT (MAX 200 KT) direct to PA NDB, turn LEFT, 295° track, intercept 326° bearing from PA NDB to TISAK. Cross PA NDB between 3500 and 6000. Cross TISAK at or above 6000.
TISAK 1K	Climb straight ahead, at 700 turn LEFT (MAX 200 KT), 284° track, intercept BGD R349 to TISAK. Cross TISAK at or above 6000.

NOT TO SCALE

TONDO 33
 After LULIK direct to FPL FIR boundary point (TONDO or PARAK):

PARAK NOT TO SCALE



Initial climb clearance 6000

ROUTING

Climb straight ahead, at 700 turn LEFT (MAX 200 KT) direct to PA NDB, 106° bearing to DONIV. Cross PA NDB between 3500 and 6000. Cross DONIV at or above 6000.

Climb straight ahead, at 700 turn LEFT (MAX 200 KT) direct to IA NDB, turn RIGHT, 313° bearing to LULIK. Cross IA NDB between 5000 and 6000. Cross LULIK at or above 6000.

Climb straight ahead, at 700 turn LEFT (MAX 200 KT) direct to IA NDB, 261° bearing from IA NDB, at D13.6 SMI turn LEFT, intercept VAL R341 to OKTAS. Cross IA NDB between 5000 and 6000. Cross OKTAS at or above 6000.

Climb straight ahead, at 700 turn LEFT (MAX 200 KT) direct to PA NDB, turn LEFT, 295° track, intercept 326° bearing from PA NDB to TISAK. Cross PA NDB between 3500 and 6000. Cross TISAK at or above 6000.

Climb straight ahead, at 700 turn LEFT (MAX 200 KT), 284° track, intercept BGD R349 to TISAK. Cross TISAK at or above 6000.

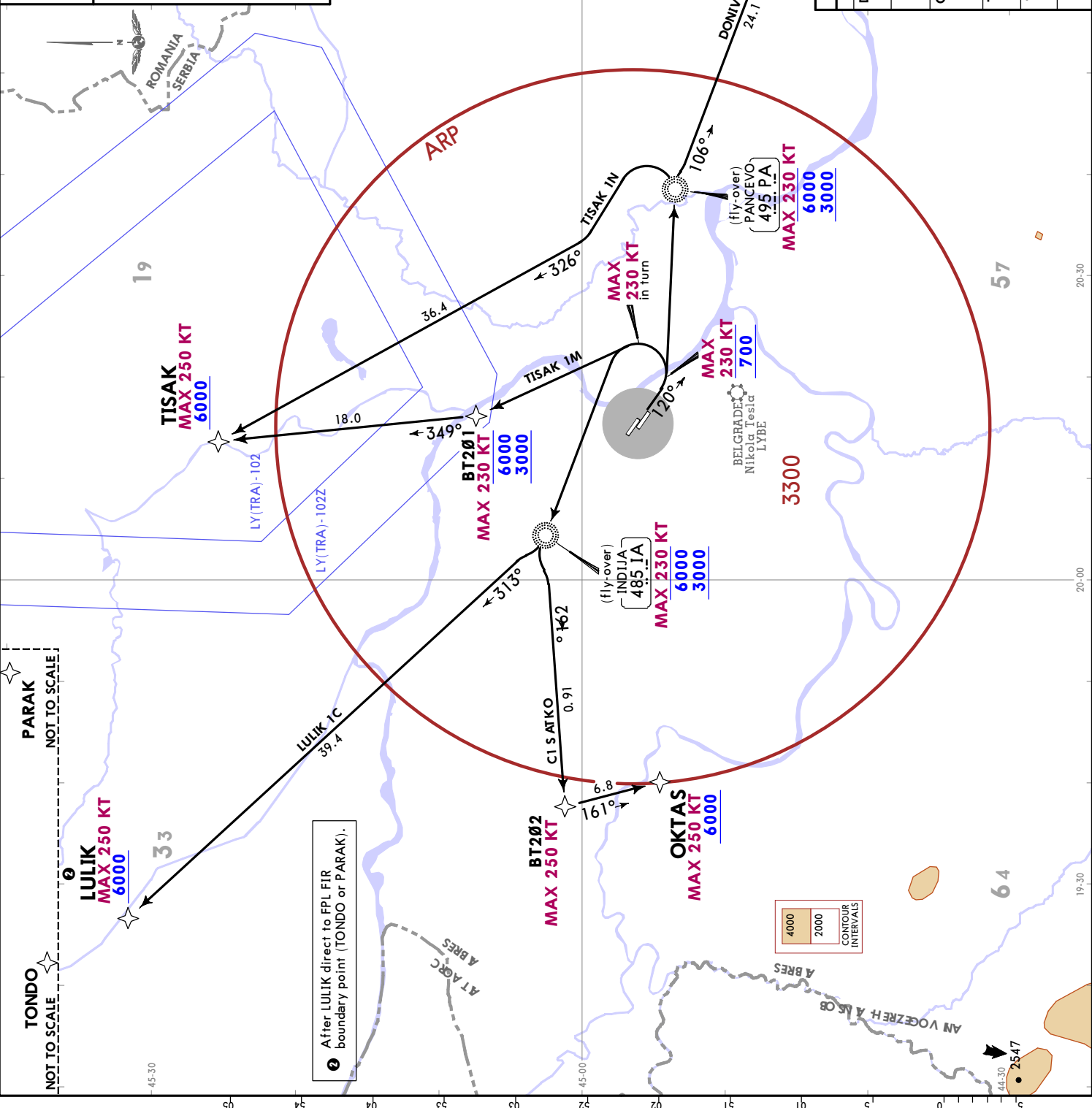
Only available when LY (TRA) 102/102Z is active, or on ATC discretion.

JEPPESBENBELGRADE, SERBIA
 28 JUL 23 (20-3B) Eff 10 Aug **RNAV SID**

Trans alt: 10000
 Due to interaction with other routes, pilots must ensure strict compliance with the specified climb profile, unless cleared by ATC.

RNP 1
 Apt Elev 281

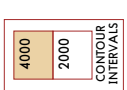
DONIV 1M [DONI1M]
LULIK 1C [LULI1C]
OKTAS 1C [OKTA1C]
TISAK 1M [TISA1M]
TISAK 1N [TISA1N]
RNP DEPARTURES (RWYS 12L/R)
SPEED: MAX 250 KT BELOW 10000



TONDO
 NOT TO SCALE

PARAK
 NOT TO SCALE

② After LULIK direct to FPL FIR boundary point (TONDO or PARAK).



SID	ROUTING
DONIV 1M	(K230-; 700) - PA NDB (K230-; 3000+; 6000-) - DONIV (K250-; 6000+).
LULIK 1C	(K230-; 700) - IA NDB (K230-; 3000+; 6000-) - LULIK (K250-; 6000+).
OKTAS 1C	(K230-; 700) - IA NDB (K230-; 3000+; 6000-) - BT202 (K250-; 6000+).
TISAK 1M	(K230-; 700) - BT201 (K230-; 3000+; 6000-) - TISAK (K250-; 6000+).
TISAK 1N	(K230-; 700) - PA NDB (K230-; 3000+; 6000-) - TISAK (K250-; 6000+).

Initial climb clearance **6000**

① Only available when LY(TRA) 102/102Z is active, or on ATC discretion.

LYBT/BJY
 BATAJNICA - PUJK - PILOT M. PAVLOVIC

CHANGES: TRIAL procedures established as standard.

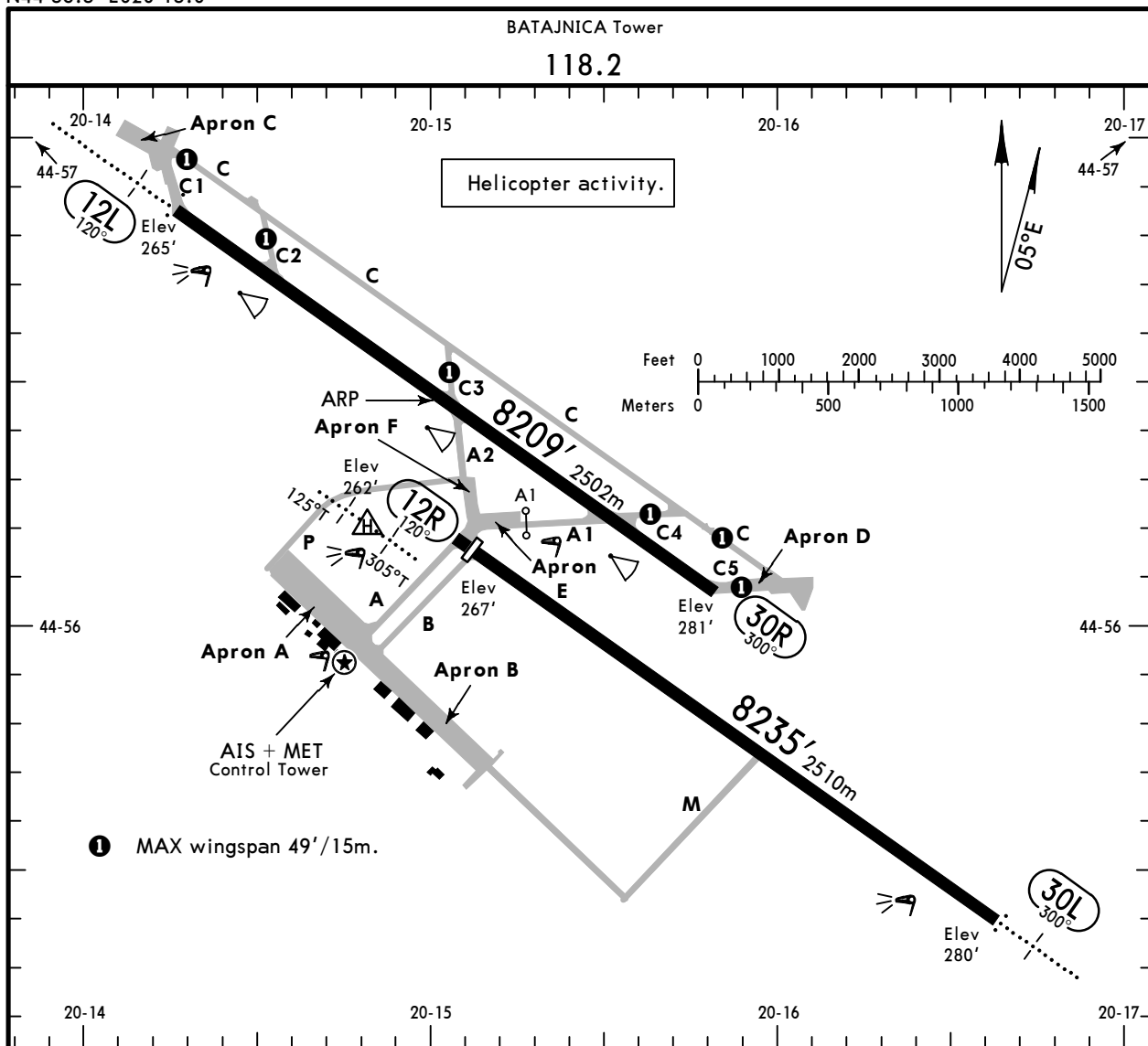
© JEPPESEN, 2023. ALL RIGHTS RESERVED.

LYBT/BJY
 Apt Elev **281'**
 N44 56.5 E020 15.0

JEPPesen
 2 DEC 22 **(20-9)**

BELGRADE, SERBIA

BATAJNICA-PUK-PILOT M. PAVLOVIC



1 MAX wingspan 49'/15m.

ADDITIONAL RUNWAY INFORMATION

RWY						USABLE LENGTHS			WIDTH
						LANDING BEYOND		TAKE-OFF	
	HIRL (60m)	HIALS	REIL	PAPI-L (3.0°)	RVR	Threshold	Glide Slope		
12L	HIRL (60m)	HIALS	REIL	PAPI-L (3.0°)	RVR		7237' 2206m		148'
30R	HIRL (60m)	PAPI-L (3.0°)			RVR				45m
12R	HIRL (60m)	PAPI-L (3.0°)				7999' 2438m			148'
30L	HIRL (60m)	HIALS	REIL	PAPI-L (3.0°)					45m
	ALS	APAPI-L (6.0°)							

Standard

TAKE-OFF

	Low Visibility Take-off		
	Day: RL & RCLM Night: RL	Day: RL or RCLM Night: RL	Adequate vis ref (Day only)
A			
B			
C	RVR 300m	400m	500m
D			

LYBT/BJY
BATAJNICA-PUK-PILOT
M. PAVLOVIC

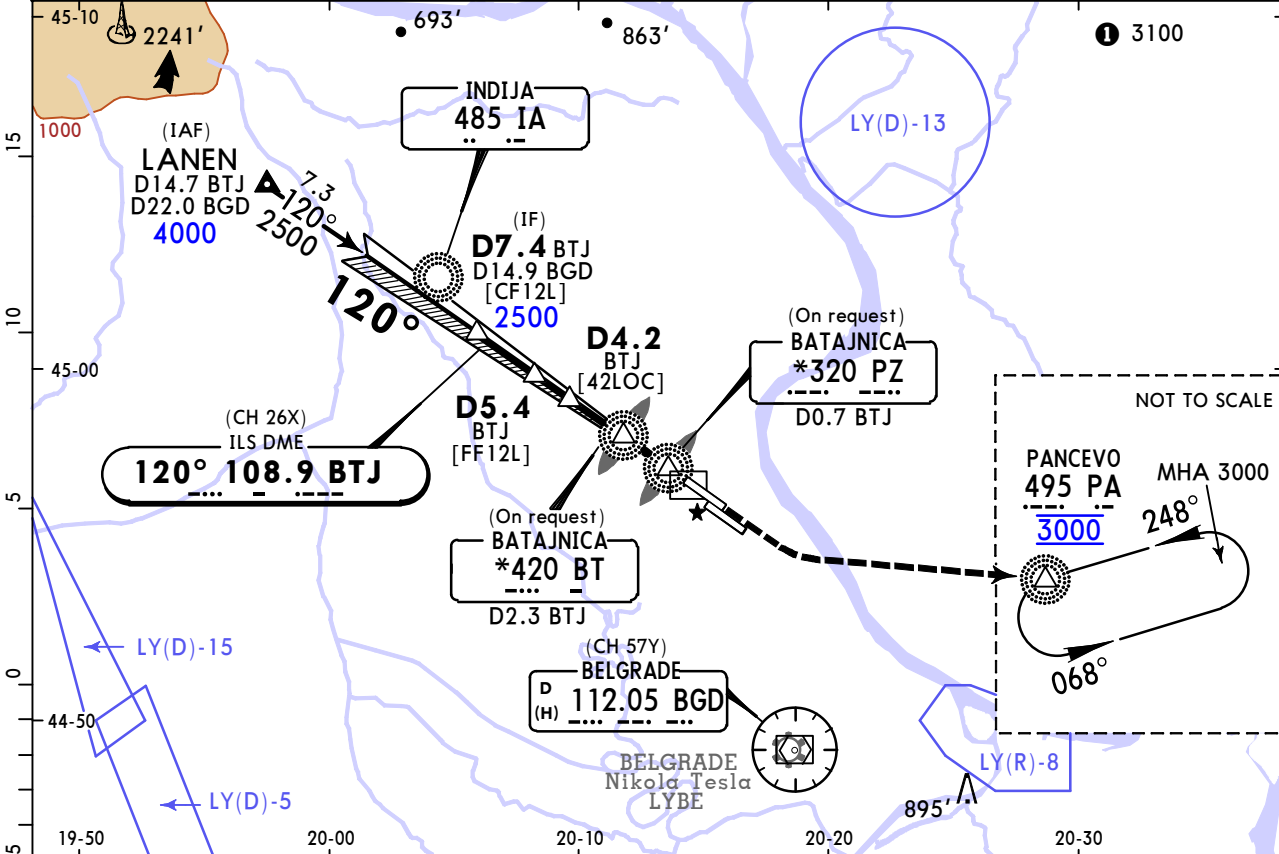


BELGRADE, SERBIA

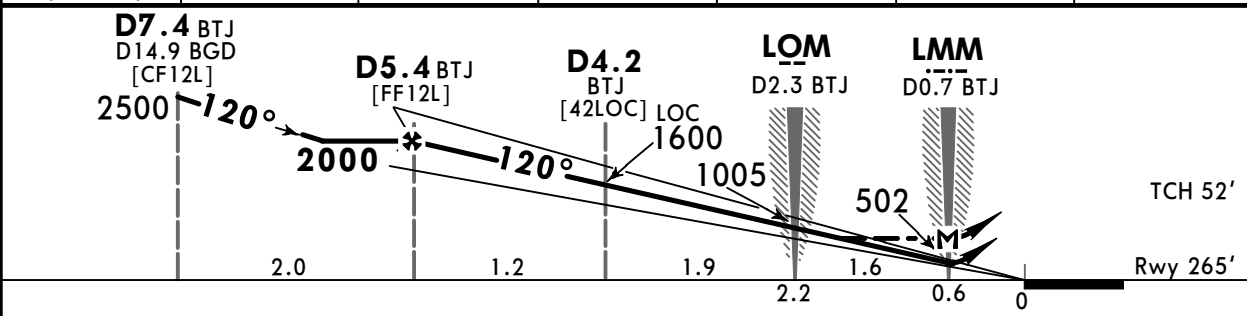
5 MAY 23 (21-1) **Eff 18 May**

ILS or LOC Rwy 12L

BATAJNICA Approach				BATAJNICA Tower	
126.050				118.2	
LOC BTJ 108.9 (CH 26X)	Final Apch Crs 120°	D5.4 BTJ 2000' (1735')	ILS DA(H) 465' (200')	Apt Elev 281'	Rwy 265'
MISSED APCH: Climb STRAIGHT AHEAD. At 700' turn LEFT direct to PA NDB at 3000' and hold.					
Alt Set: hPa Rwy Elev: 10 hPa Trans level: By ATC Trans alt: 10000'					
1. DME required. 2. ADF required.					



LOC (GS out)	BTJ DME	5.0	4.0	3.0	2.0	1.0
	ALTITUDE	1857'	1539'	1221'	903'	584'



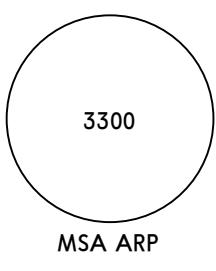
Gnd speed-Kts	70	90	100	120	140	160			
GS	3.00°	372	478	531	637	743	849	HIALS	700
LOC Descent Angle	3.05°	378	486	540	648	755	863	PAPI	3000
MAP at LMM/D0.7 BTJ								REIL	PA 495

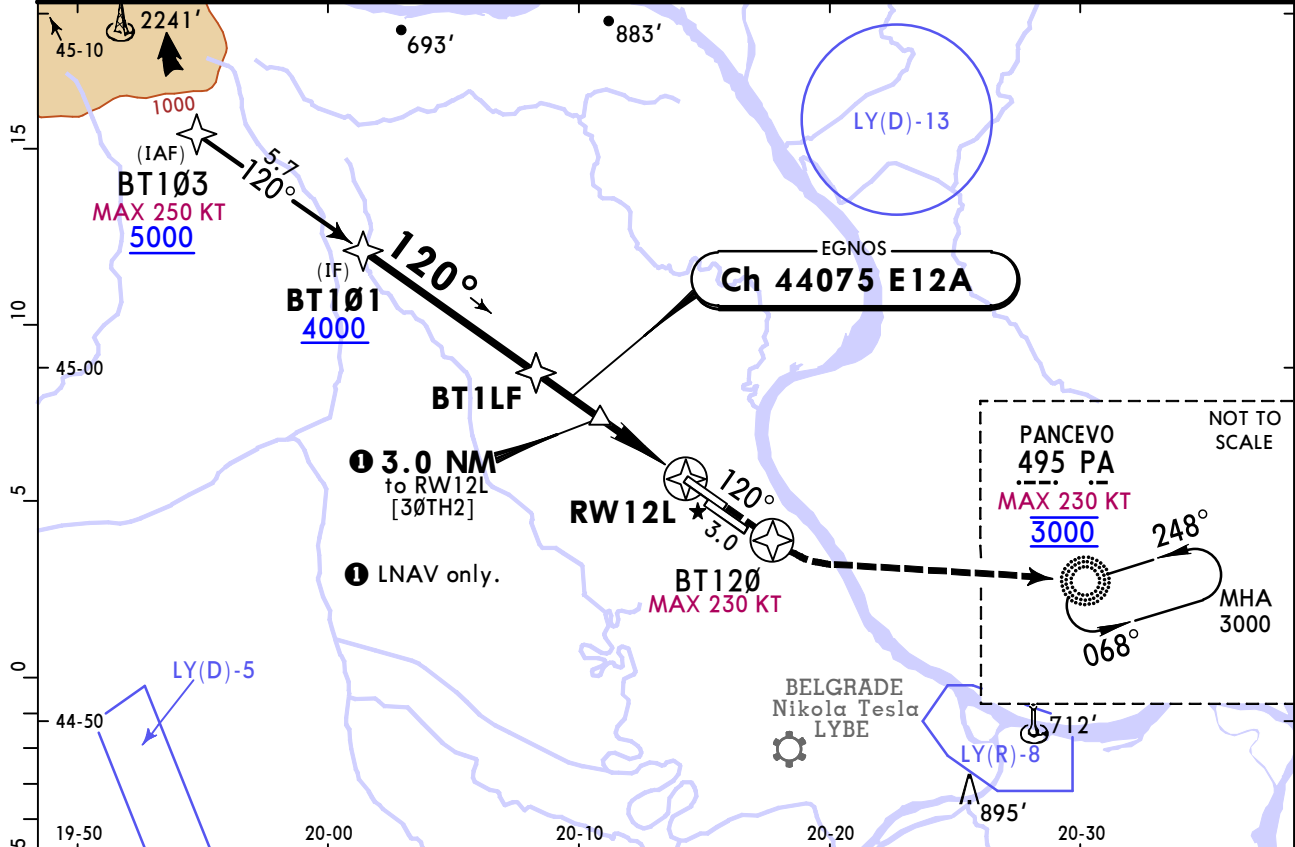
Military				STRAIGHT-IN LANDING		CIRCLE-TO-LAND	
ILS		LOC (GS out)		Not authorized		Southwest of airport between 129° and 292°	
DA(H) 465' (200')		MDA(H) 530' (265')					
FULL		ALS out		ALS out		Max Kts	
A						100	740' (459') V2100m
B						135	790' (509') V2400m
C	R750m	R1200m	R900m	R1300m		180	950' (669') V3100m
D						205	990' (709') V3600m

LYBT/BJY
BATAJNICA-PUK-PILOT
M. PAVLOVIC

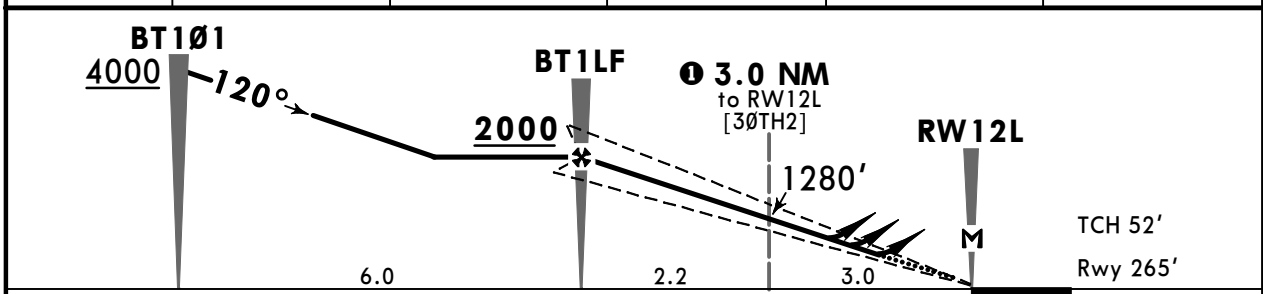
JEPPESEN
 28 JUL 23 **(22-1)** **Eff 10 Aug**

BELGRADE, SERBIA
RNP Rwy 12L

BATAJNICA Approach			BATAJNICA Tower		
126.050		119.575		118.2	
EGNOS Ch 44075 E12A	Final Apch Crs 120°	BT1LF 2000 (1735')	LPV CAT I DA(H) 465' (200')	Apt Elev 281'	Rwy 265'
MISSED APCH: Climb STRAIGHT AHEAD inbound BT120. At BT120 turn LEFT (MAX 230 KT) direct to PA NDB at 3000' and hold. Further by ATC.					
Alt Set: hPa Rwy Elev: 10 hPa Trans level: By ATC Trans alt: 10000'					
RNP APCH BARO-VNAV not authorized below -15°C.					



DIST to RW12L	5.0	4.0	3.0	2.0	1.0
ALTITUDE	1930'	1600'	1280'	960'	640'



Gnd speed-Kts	70	90	100	120	140	160	HIALS PAPI REIL	BT120 ↑	230 KT MAX ↙ LT	PA 495
Glide Path Angle	3.00°	372	478	531	637	849				
MAP at RW12L										

Timing not authorized for defining the MAP.

Military						STRAIGHT-IN LANDING			CIRCLE-TO-LAND Not authorized Southwest of airport between 129° and 292°		
LPV CAT I		LNAV/VNAV		LNAV							
DA(H) 465' (200')		DA(H) 515' (250')		MDA(H) 620' (355')							
ALS out		ALS out		ALS out							
A	R750m	R1200m	R800m	R1300m	R1200m	R1500m	Max Kts	100	740' (459')	V2100m	
B							135	790' (509')	V2400m		
C							180	950' (669')	V3100m		
D							205	990' (709')	V3600m		

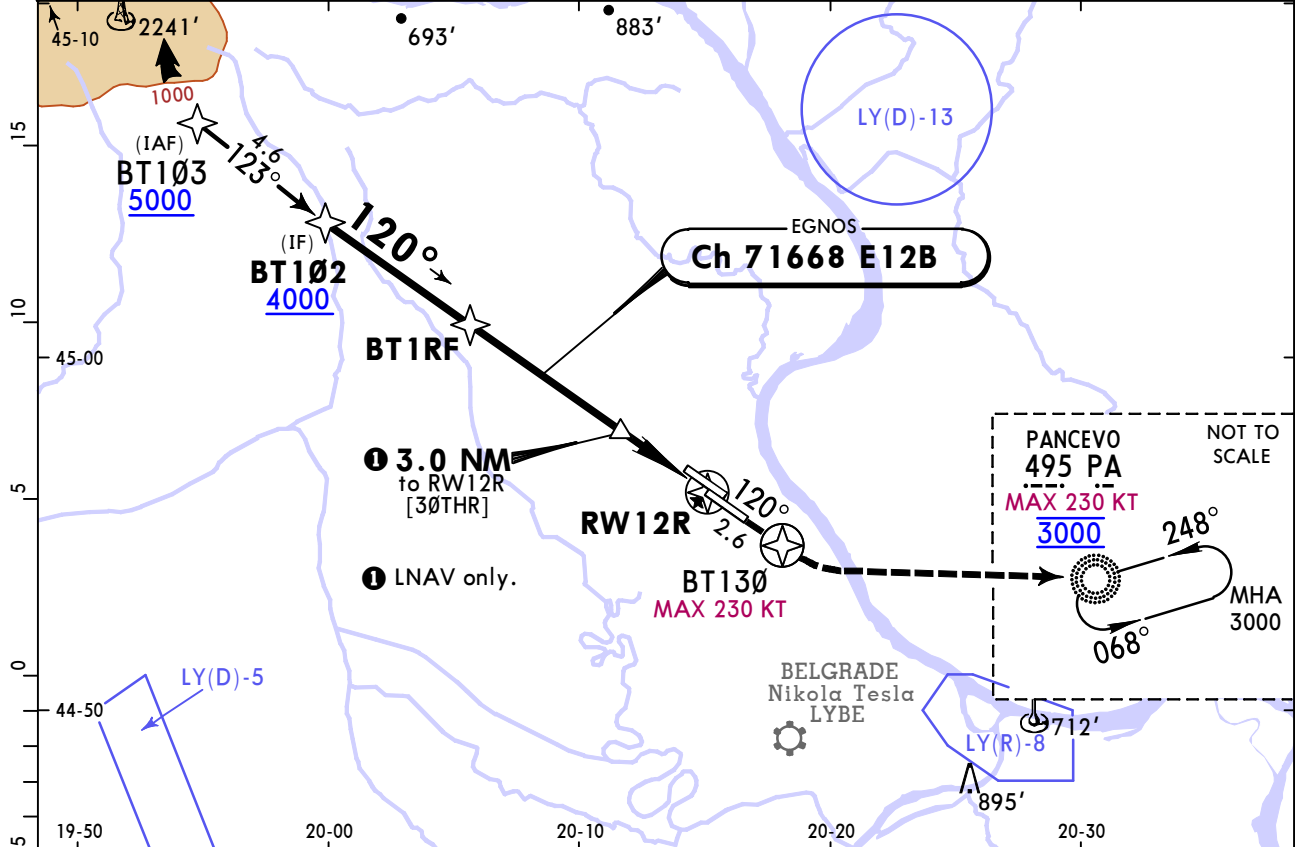
PANS OPS MIL

LYBT/BJY
BATAJNICA-PUK-PILOT
M. PAVLOVIC

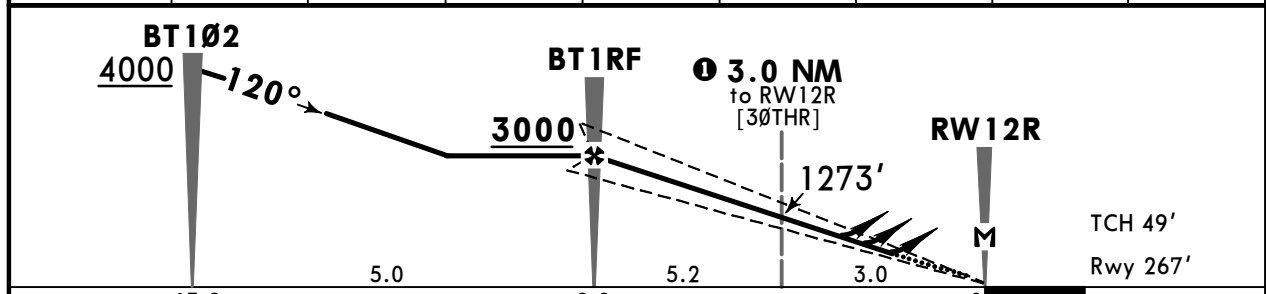
JEPPESEN
 28 JUL 23 **(22-2)** **Eff 10 Aug**

BELGRADE, SERBIA
RNP Rwy 12R

BATAJNICA Approach			BATAJNICA Tower		
126.050		119.575		118.2	
BRIEFING STRIP™	EGNOS Ch 71668 E12B	Final Apch Crs 120°	BT1RF 3000 (2733')	LPV CAT I DA(H) 467' (200')	Apt Elev 281' Rwy 267'
	MISSED APCH: Climb STRAIGHT AHEAD inbound BT130. At BT130 turn LEFT (MAX 230 KT) direct to PA NDB at 3000' and hold. Further by ATC.				
Alt Set: hPa Rwy Elev: 10 hPa Trans level: By ATC Trans alt: 10000'					3300 MSA ARP
RNP APCH BARO-VNAV not authorized below -15°C.					



DIST to RW12R	8.0	7.0	6.0	5.0	4.0	3.0	2.0	1.0
ALTITUDE	2920'	2590'	2260'	1930'	1600'	1280'	960'	640'



Gnd speed-Kts	70	90	100	120	140	160	PAPI-L	BT130 ↑	230 KT MAX	D →	PA 495	
Glide Path Angle	3.00°	372	478	531	637	743						849
MAP at RW12R												

Timing not authorized for defining the MAP.

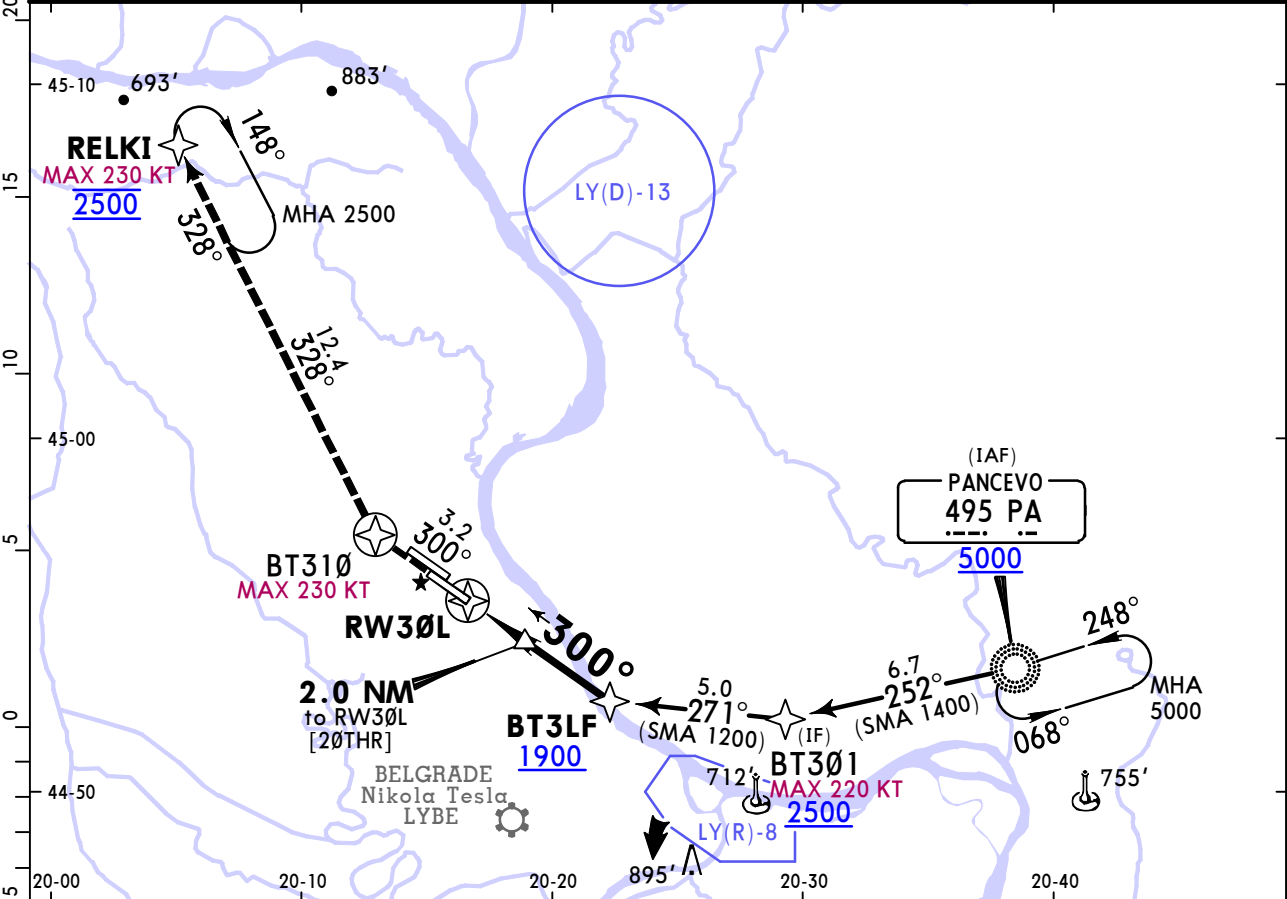
PANS OPS MIL	Military			STRAIGHT-IN LANDING		CIRCLE-TO-LAND Not authorized Southwest of airport between 129° and 292°			
	LPV CAT I		LNAV/VNAV		LNAV		Max Kts		
	DA(H) 467' (200')		DA(H) 563' (296')		MDA(H) 650' (383')				
	A	R1200m		R1400m		R1500m		100	740' (459') V2100m
	B							135	790' (509') V2400m
C	180							950' (669') V3100m	
D	205							990' (709') V3600m	

LYBT/BJY
BATAJNICA-PUK-PILOT
M. PAVLOVIC

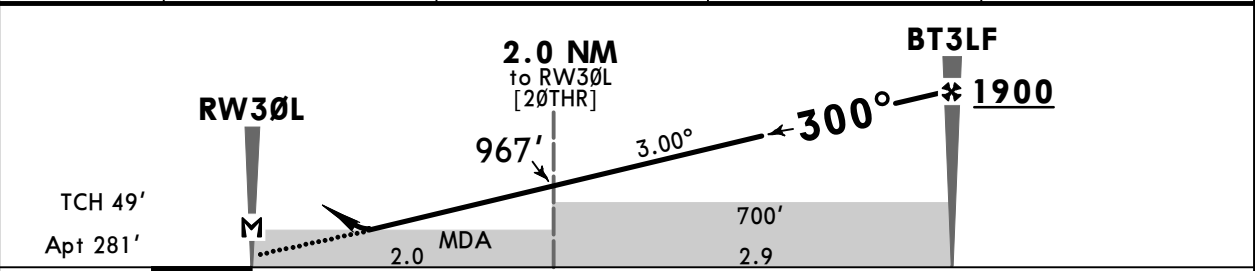
JEPPESEN
 28 JUL 23 **(22-3)** **Eff 10 Aug**

BELGRADE, SERBIA
RNP Rwy 30L

BATAJNICA Approach			BATAJNICA Tower		
126.050		119.575		118.2	
RNAV	Final Apch Crs 300°	BT3LF 1900 (1619')	MDA(H) 650' (369')	Apt Elev 281'	
MISSED APCH: Climb STRAIGHT AHEAD inbound BT310. At BT310 turn RIGHT (MAX 230 KT) on track 328° to RELKI at 2500' and hold. Further by ATC.					3300 MSA ARP
RNP APCH	Alt Set: hPa	Apt Elev: 10 hPa	Trans level: By ATC	Trans alt: 10000'	



DIST to RW30L	1.0	2.0	3.0	4.0
ALTITUDE	650'	970'	1290'	1600'



Gnd speed-Kts	70	90	100	120	140	160	HIALS PAPI REIL	BT310 230 KT MAX onto 328° RT
Descent Angle	3.00°	372	478	531	637	849		
MAP at RW30L								

Timing not authorized for defining the MAP.

PANS OPS MIL	Military		STRAIGHT-IN LANDING		CIRCLE-TO-LAND	
			LNAV		Not authorized Southwest of airport between 129° and 292°	
			MDA(H) 650' (369')			
			ALS out		Max Kts	MDA(H)
A	R1500m				100	740' (459') V2100m
B	R1500m				135	790' (509') V2400m
C	R1500m				180	950' (669') V3100m
D	R1500m				205	990' (709') V3600m

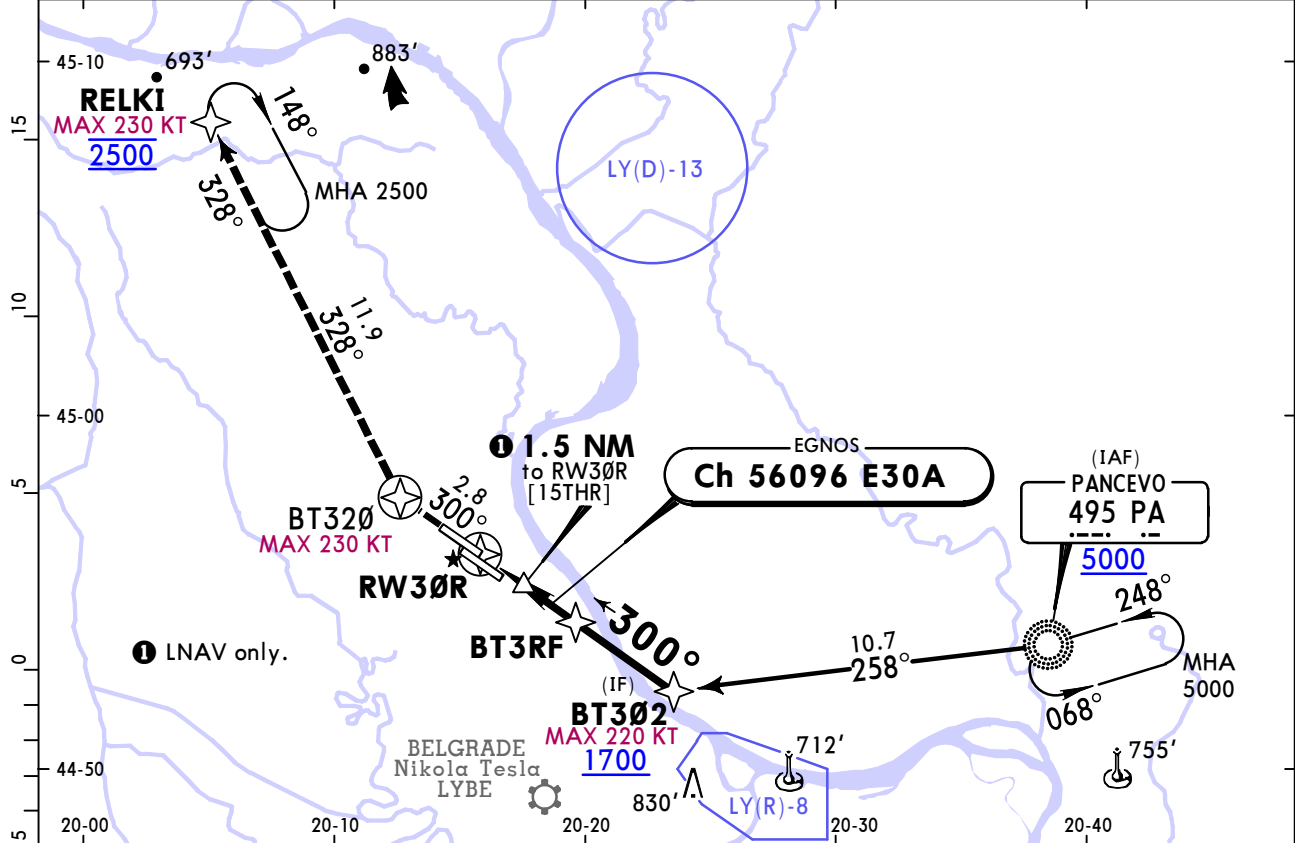
CHANGES: New procedure.

LYBT/BJY
BATAJNICA-PUK-PILOT
M. PAVLOVIC

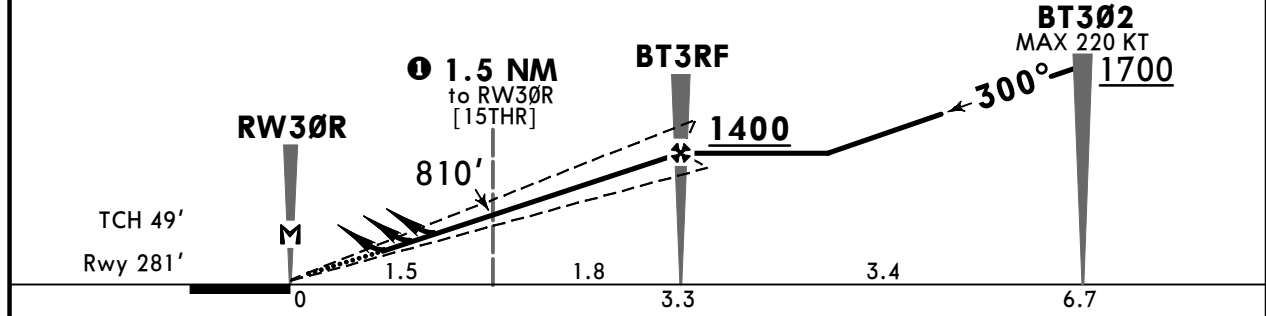
JEPPESEN
 28 JUL 23 **(22-4)** **Eff 10 Aug**

BELGRADE, SERBIA
RNP Rwy 30R

BATAJNICA Approach			BATAJNICA Tower		
126.050		119.575		118.2	
EGNOS Ch 56096 E30A	Final Apch Crs 300°	BT3RF 1400 (1119')	LPV CAT I DA(H) 481' (200')	Apt Elev 281'	3300 MSA ARP
MISSED APCH: Climb STRAIGHT AHEAD inbound BT320. At BT320 turn RIGHT (MAX 230 KT) on track 328° to RELKI at 2500' and hold. Further by ATC.					
Alt Set: hPa		Rwy Elev: 10 hPa	Trans level: By ATC	Trans alt: 10000'	
RNP APCH	BARO-VNAV not authorized below -15°C.				



DIST to RW30R	1.0	2.0	3.0
ALTITUDE	650'	970'	1290'



Gnd speed-Kts	70	90	100	120	140	160	PAPI-L	BT320 ↑	230 KT MAX ↑ RT onto 328°	
Glide Path Angle	3.00°	372	478	531	637	743				849
MAP at RW30R										

Timing not authorized for defining the MAP.

Military			STRAIGHT-IN LANDING		CIRCLE-TO-LAND Not authorized Southwest of airport between 129° and 292°	
LPV CAT I		LNAV/VNAV		LNAV		
DA(H) 481' (200')		DA(H) 547' (266')		MDA(H) 650' (369')		Max Kts
A	R1200m	R1300m	R1500m	R1700m	100	740' (459') V2100m
B					135	790' (509') V2400m
C					180	950' (669') V3100m
D					205	990' (709') V3600m

LYBT/BJY
BATAJNICA-PUK-PILOT
M. PAVLOVIC

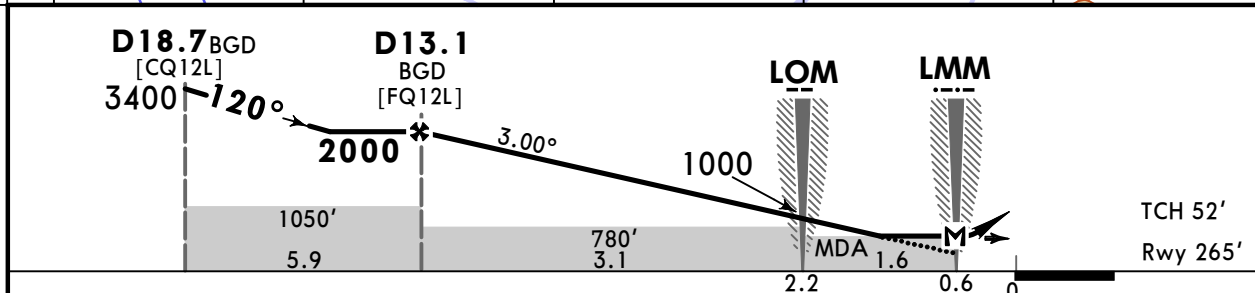
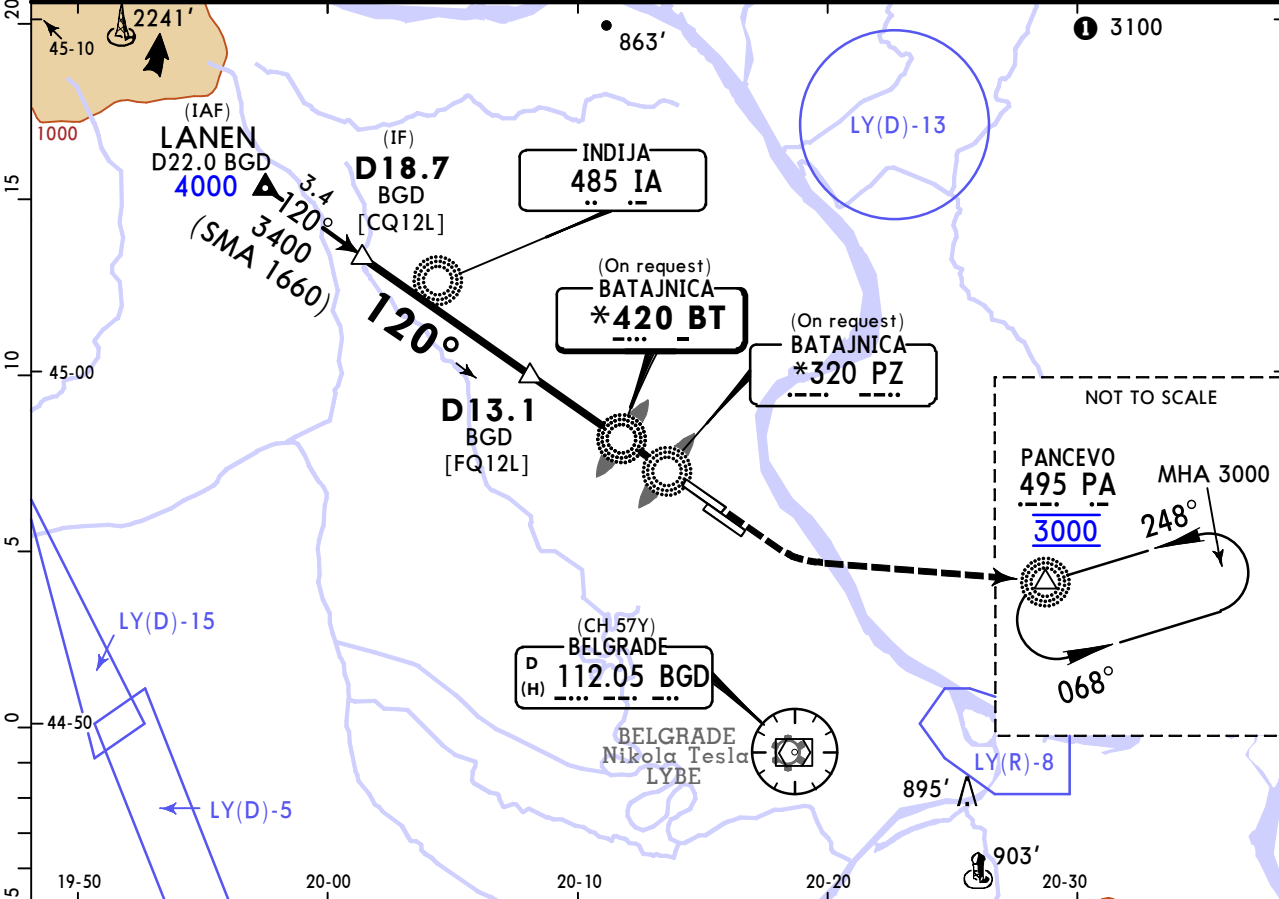
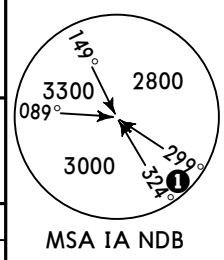
JEPPESEN

BELGRADE, SERBIA

5 MAY 23 (26-1) Eff 18 May

NDB Rwy 12L

BATAJNICA Approach				BATAJNICA Tower	
126.050				118.2	
NDB BT *420	Final Apch Crs 120°	D13.1 BGD 2000 (1735')	MDA(H) 650' (385')	Apt Elev 281' Rwy 265'	
MISSED APCH: Climb STRAIGHT AHEAD. At 700' turn LEFT direct to PA NDB at 3000' and hold.					
Alt Set: hPa		Rwy Elev: 10 hPa	Trans level: By ATC		Trans alt: 10000'
1. DME required. 2. Dual ADF required.					



Gnd speed-Kts	70	90	100	120	140	160
Descent Angle 3.00°	372	478	531	637	743	849
MAP at LMM						

Timing not authorized for defining the MAP.

HIALS: **700** / **3000** / PA **495**

PAPI: **↑** / **LT**

REIL: **↑** / **LT**

Military STRAIGHT-IN LANDING		CIRCLE-TO-LAND	
MDA(H) 650' (385')		Not authorized Southwest of airport between 129° and 292°	
	ALS out	Max Kts	MDA(H)
A	R1500m	100	740' (459') V2100m
B		135	790' (509') V2400m
C	R1800m	180	950' (669') V3100m
D		205	990' (709') V3600m

PANS OPS MIL

LYBT/BJY
BATAJNICA-PUK-PILOT
M. PAVLOVIC

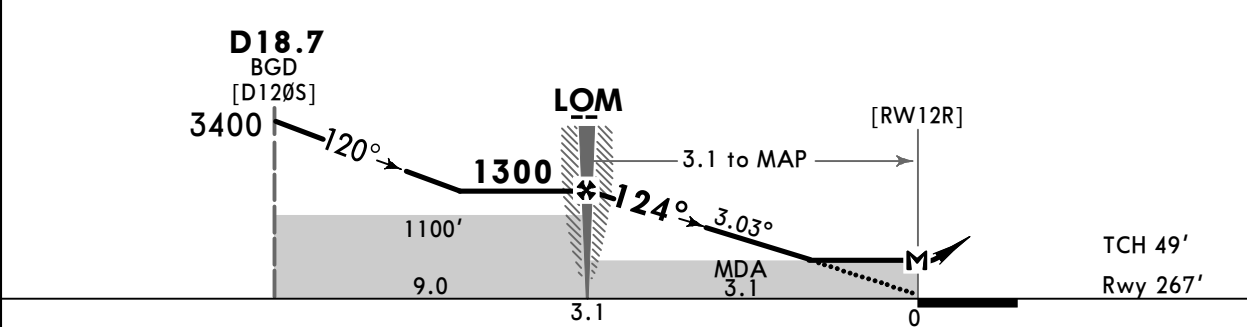
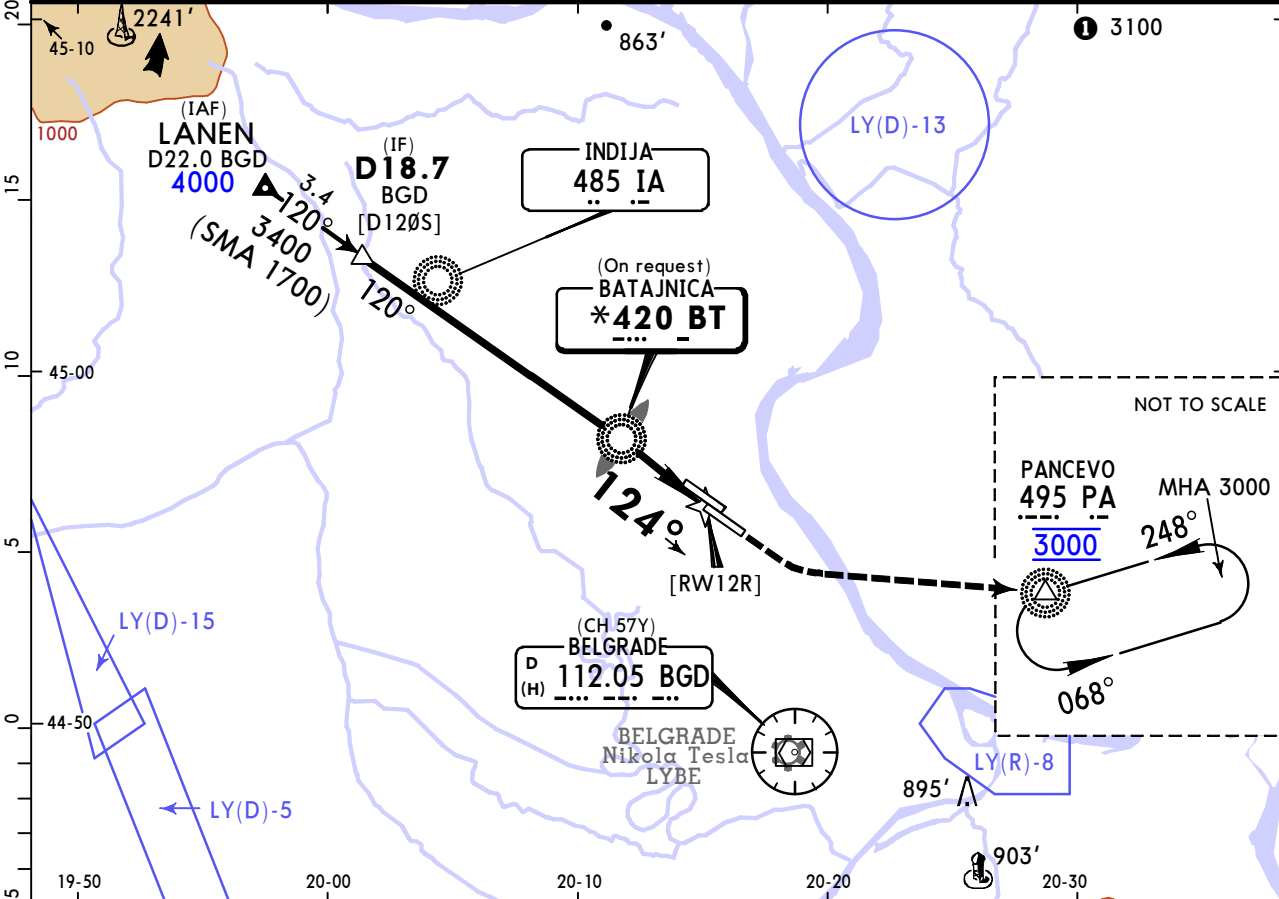
JEPPESEN

BELGRADE, SERBIA

5 MAY 23 **(26-2)** **Eff 18 May**

NDB Rwy 12R

BATAJNICA Approach				BATAJNICA Tower		
126.050				118.2		
NDB BT *420	Final Apch Crs 124°	LOM 1300 (1033')	MDA(H) 650' (383')	Apt Elev 281' Rwy 267'		
MISSED APCH: Climb STRAIGHT AHEAD. At 700' turn LEFT climbing to PA NDB at 3000' and hold.						
Alt Set: hPa		Rwy Elev: 10 hPa	Trans level: By ATC		Trans alt: 10000'	
DME required.						MSA IA NDB



Gnd speed-Kts	70	90	100	120	140	160	PAPI-L	700 ↑	3000 LT	PA 495
Descent Angle 3.03°	375	482	536	643	750	858				
MAP at RW12R										
LOM to MAP	3.1	2:39	2:04	1:52	1:33	1:20	1:10			

Military STRAIGHT-IN LANDING				CIRCLE-TO-LAND			
MDA(H) 650' (383')				Not authorized Southwest of airport between 129° and 292°			
PANS OPS MIL	A	R1500m		Max Kts	MDA(H)		
	B			100	740' (459')	V2100m	
	C			135	790' (509')	V2400m	
	D	R1800m		180	950' (669')	V3100m	
				205	990' (709')	V3600m	

LYBT/BJY
BATAJNICA-PUK-PILOT
M. PAVLOVIC

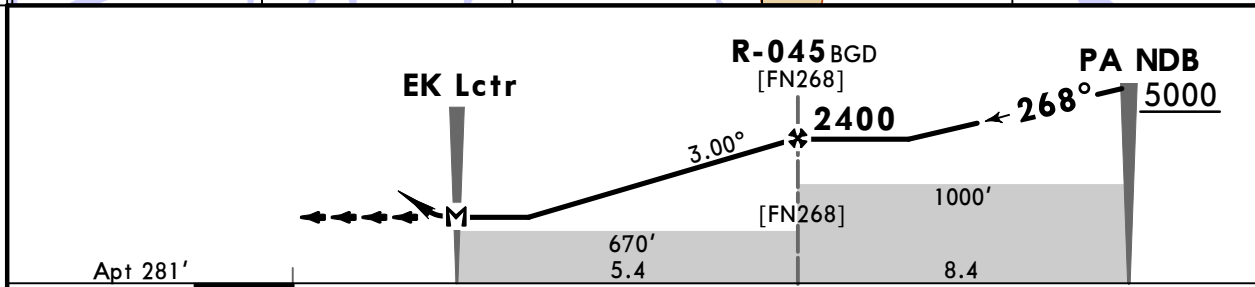
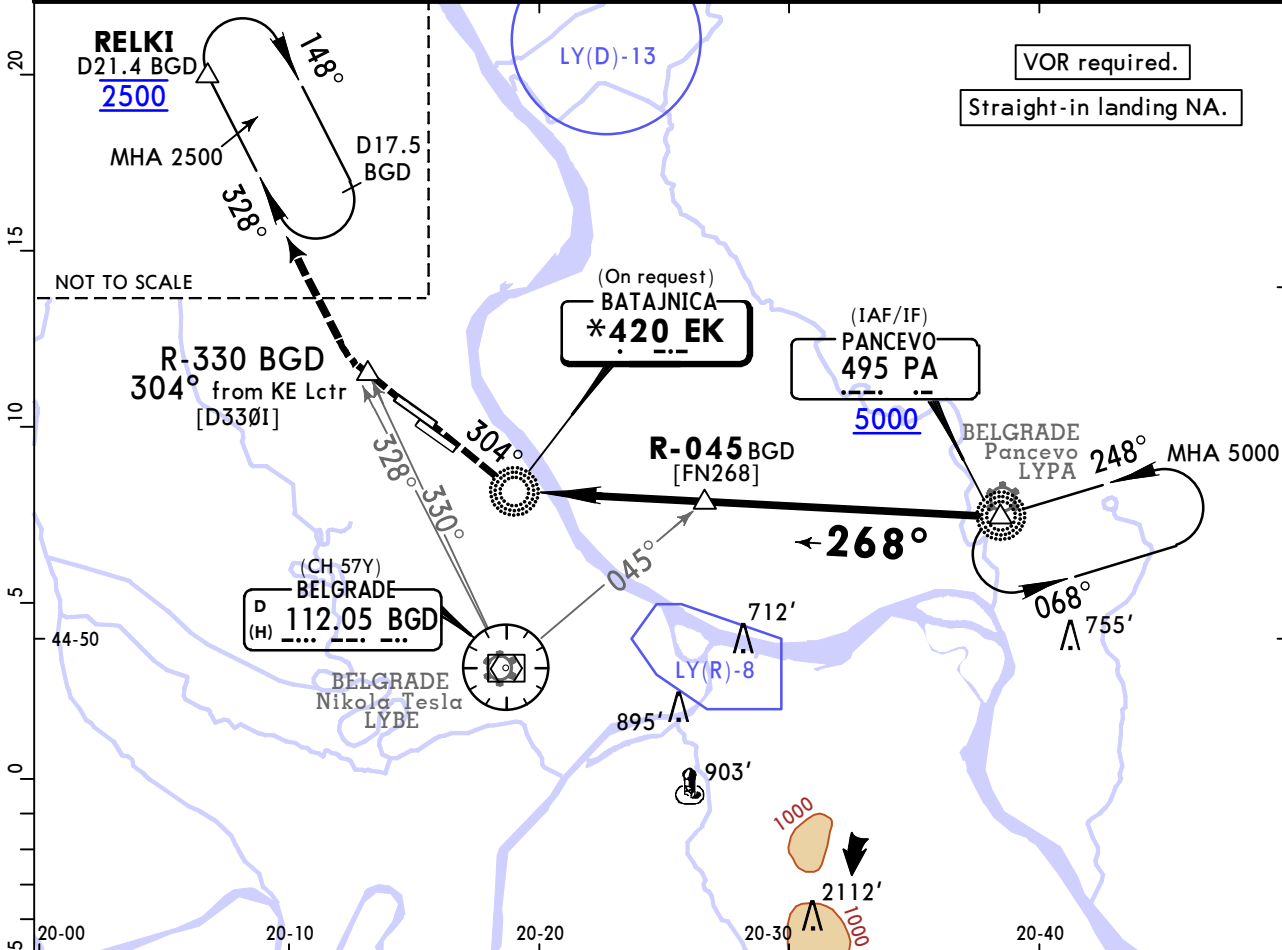
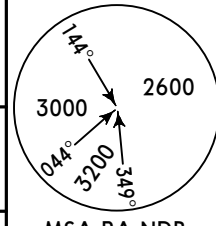
JEPPESSEN

BELGRADE, SERBIA

5 MAY 23 **(26-3)** Eff 18 May

NDB A RWY 30L/R

BATAJNICA Approach				BATAJNICA Tower	
126.050				118.2	
Lctr EK *420	Final Apch Crs 268°	R-045 BGD 2400 (2119')	MDA(H) Refer to Minimums	Apt Elev 281'	
MISSED APCH: At EK Lctr turn RIGHT (MAX 185 KT) climbing intercept and follow 304° from EK Lctr, intercept and follow R-328 BGD climbing to RELKI at 2500' and hold.					
Alt Set: hPa		Apt Elev: 10 hPa		Trans level: By ATC	
				Trans alt: 10000'	
MSA PA NDB					



Gnd speed-Kts	70	90	100	120	140	160	Lighting - Refer to Airport chart	RT on from EK 420
Descent Angle 3.00°	372	478	531	637	743	849		
MAP at EK Lctr								

Timing not authorized for defining the MAP.

Military CIRCLE-TO-LAND

Not authorized Southwest of airport between 129° and 292°

	Max Kts	MDA(H)	
A	100	740' (459')	V2100m
B	135	790' (509')	V2400m
C	180	950' (669')	V3100m
D	205	990' (709')	V3600m

Chart changes since cycle 15-2023

ADD = added chart, REV = revised chart, DEL = deleted chart.

ACT	PROCEDURE IDENT	INDEX	REV DATE	EFF DATE
BELGRADE, (BATAJNICA - PUKOVNIK-PILOT MIL - LYBT)				
ADD	RWYS 12L/R RNP ARRS	20-2B	28 Jul 2023	10 Aug 2023
DEL	RWYS 12L/R RNP ARRS (TRIA...	20-2B	28 Jul 2023	10 Aug 2023
DEL	RWYS 30L/R RNP ARR (TRIAL...	20-2C	28 Jul 2023	10 Aug 2023
ADD	RWYS 30L/R RNP ARRS	20-2C	28 Jul 2023	10 Aug 2023
REV	DONIV 3K, LULIK & OKTAS 1...	20-3	28 Jul 2023	10 Aug 2023
REV	DONIV 3L, LULIK & OKTAS 1...	20-3A	28 Jul 2023	10 Aug 2023
ADD	RWYS 12L/R RNP DEPS	20-3B	28 Jul 2023	10 Aug 2023
DEL	RWYS 12L/R RNP DEPS (TRIA...	20-3B	28 Jul 2023	10 Aug 2023
ADD	RWYS 30L/R RNP DEPS	20-3C	28 Jul 2023	10 Aug 2023
DEL	RWYS 30L/R RNP DEPS (TRIA...	20-3C	28 Jul 2023	10 Aug 2023
ADD	RNP RWY 12L	22-1	28 Jul 2023	10 Aug 2023
DEL	RNP RWY 12L (TRIAL)	22-1-0	28 Jul 2023	10 Aug 2023
ADD	RNP RWY 12R	22-2	28 Jul 2023	10 Aug 2023
DEL	RNP RWY 12R (TRIAL)	22-2-0	28 Jul 2023	10 Aug 2023
ADD	RNP RWY 30L	22-3	28 Jul 2023	10 Aug 2023
DEL	RNP RWY 30L (TRIAL)	22-3-0	28 Jul 2023	10 Aug 2023
ADD	RNP RWY 30R	22-4	28 Jul 2023	10 Aug 2023
DEL	RNP RWY 30R (TRIAL)	22-4-0	28 Jul 2023	10 Aug 2023

TERMINAL CHART CHANGE NOTICES

Chart Change Notices for Airport LYBT

Type: Terminal

Effectivity: Temporary

Begin Date: 20230420

End Date: 20230809

Based on AIRAC AIP SUP 03/23, new trial procedures (22-1-0) RNP Rwy 12L, (22-2-0) RNP Rwy 12R, (22-3-0) RNP Rwy 30L and (22-4-0) RNP Rwy 30R established. Procedures shall be used for flight validation and flyability check only. Refer also to latest NOTAMs.