

List of pages in this Trip Kit

Trip Kit Index

Airport Information For LYNI

Terminal Charts For LYNI

Revision Letter For Cycle 16-2023

Change Notices

Notebook

General Information

Location: NIS SCG
ICAO/IATA: LYNI / INI
Lat/Long: N43° 20.23', E021° 51.22'
Elevation: 650 ft

Airport Use: Joint-Use
Daylight Savings: Observed
UTC Conversion: -1:00 = UTC
Magnetic Variation: 5.0° E

Fuel Types: Jet A-1
Customs: Yes
Airport Type: IFR
Landing Fee: Yes
Control Tower: Yes
Jet Start Unit: No
LLWS Alert: No
Beacon: No

Sunrise: 0527 Z
Sunset: 1508 Z

Runway Information

Runway: 11
Length x Width: 8202 ft x 148 ft
Surface Type: asphalt
TDZ-Elev: 642 ft
Lighting: Edge, ALS
Displaced Threshold: 719 ft

Runway: 29
Length x Width: 8202 ft x 148 ft
Surface Type: asphalt
TDZ-Elev: 648 ft
Lighting: Edge, ALS
Displaced Threshold: 984 ft

Communication Information

Nis Tower: 118.950 VHF-DF
Nis Tower: 136.075 Secondary VHF-DF
Nis Approach: 136.075 Secondary VHF-DF
Nis Approach: 119.525 VHF-DF
Nis Handling Operations: 121.650

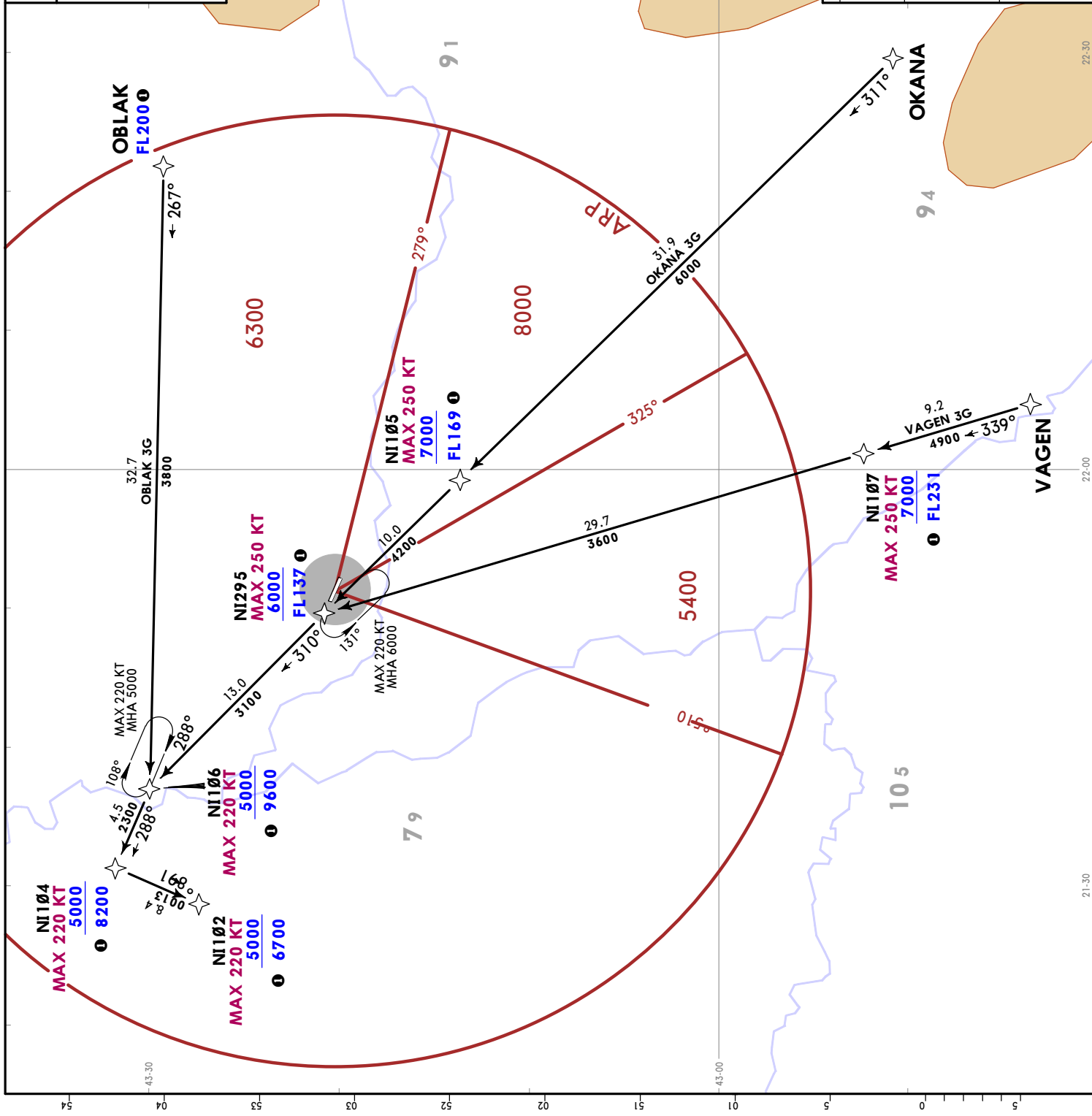
8 JUL 22 10-2
JEPPESSEN
NIS, SERBIA
RNAV STAR

Alt Set: hPa
 Trans level: By ATC
 RNP 1.

OBLAK 3G [OBLA3G]
OKANA 3G [OKAN3G]
VAGEN 3G [VAGE3G]
RNP ARRIVALS
(RWY 11)

SPEED: MAX 250 KT BELOW 10000

Recommended altitudes/Fls for continuous descend approach (CDA).



STAR	ROUTING
OBLAK 3G	OBLAK (CDA FL200) - NI106 (K220-; 5000+; CDA 9600) - NI104 (K220-; 5000+; CDA 8200) - NI102 (K220-; 5000+; CDA 6700).
OKANA 3G	OKANA - NI105 (K250-; 7000+; CDA FL169) - NI295 (K250-; 6000+; CDA FL137) - NI106 (K220-; 5000+; CDA 9600) - NI104 (K220-; 5000+; CDA 8200) - NI102 (K220-; 5000+; CDA 6700).
VAGEN 3G	VAGEN - NI107 (K250-; 7000+; CDA FL231) - NI295 (K250-; 6000+; CDA FL137) - NI106 (K220-; 5000+; CDA 9600) - NI104 (K220-; 5000+; CDA 8200) - NI102 (K220-; 5000+; CDA 6700).

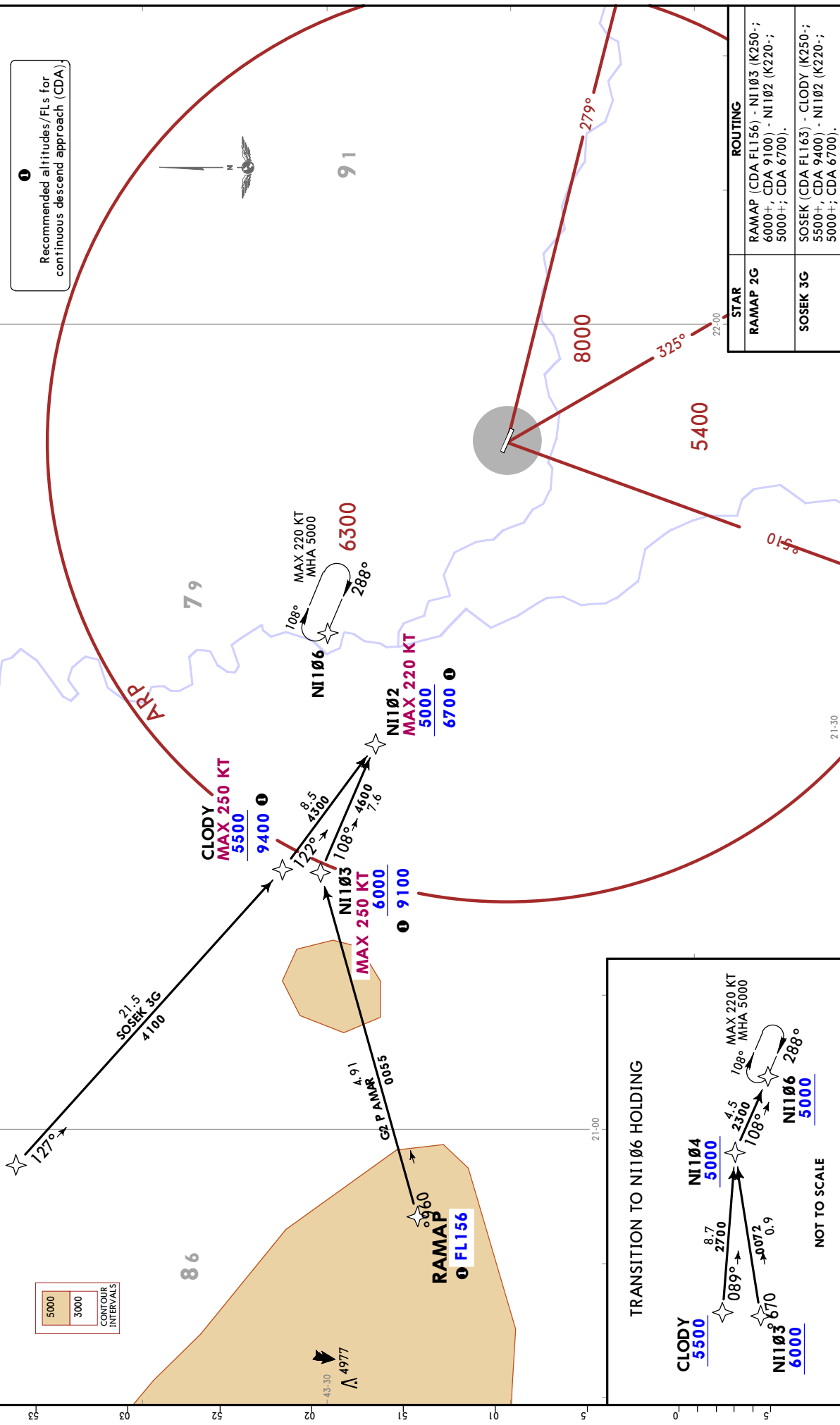
LYNI/INI
 KONSTANTIN VELIKI

Alt Set: hPa
 Trans level: By ATC
 RNP 1.

Apt Elev
 650

RAMAP 2G [RAMA2G]
 SOSEK 3G [SOSE3G]
 RNP ARRIVALS
 (RWY 11)

SPEED: MAX 250 KT BELOW 10000



JEPPesen
 8 JUL 22 (10-2B)
RNAV STAR

LYNI/INI
 KONSTANTIN VELIKI

NIS, SERBIA

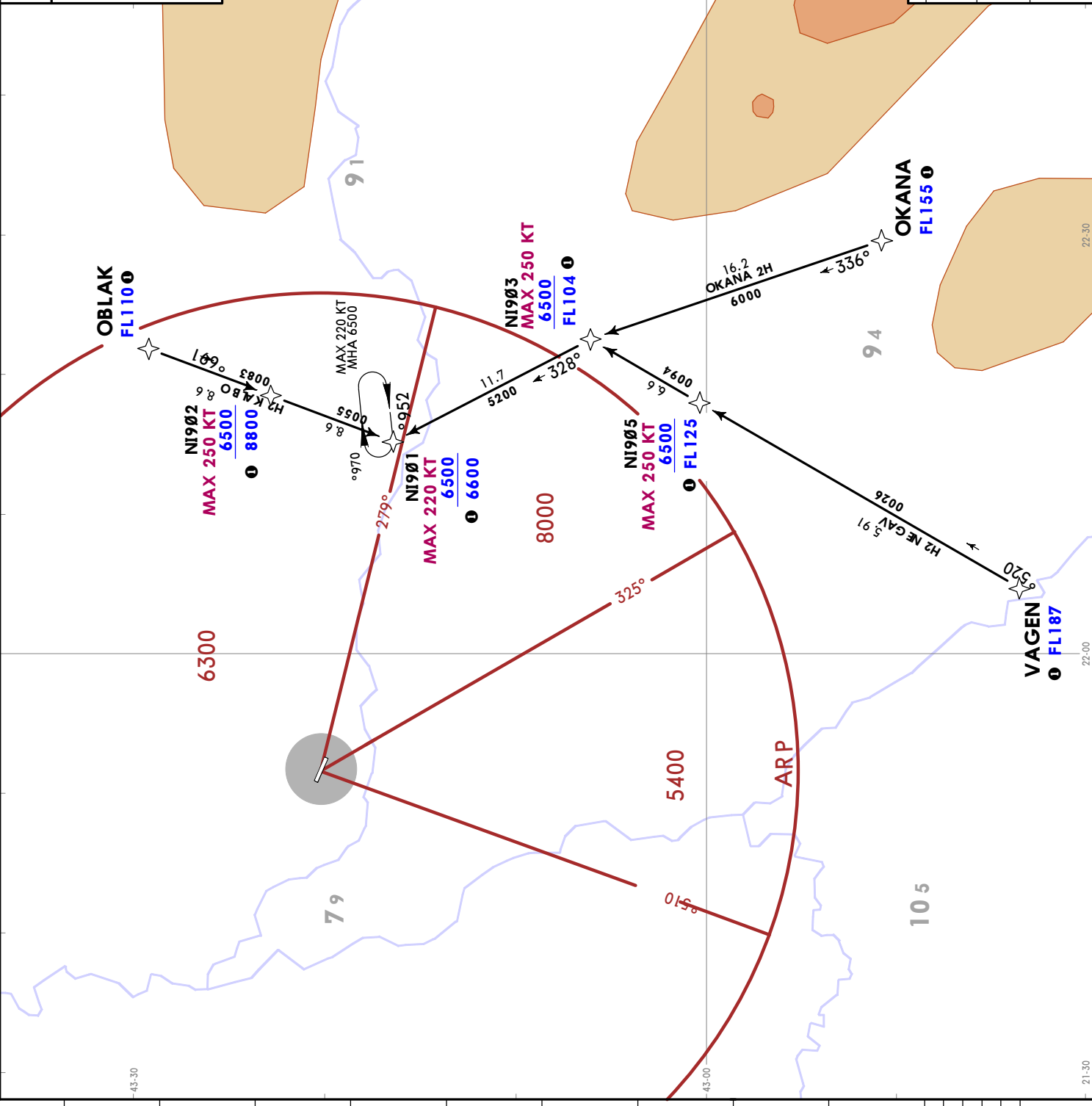
Air Set: hPa
 Trans level: By ATC
 RNP 1.

OBLAK 2H [OBLA2H]
OKANA 2H [OKAN2H]
VAGEN 2H [VAGE2H]
RNP ARRIVALS
(RWY 29)

SPEED: MAX 250 KT BELOW 10000

Recommended altitudes/FLs for continuous descend approach (CDA).

STAR	ROUTING
OBLAK 2H	OBLAK (CDA FL110) - NI902 (K250-; 6500+; CDA 8800) - NI901 (K220-; 6500+; CDA 6600).
OKANA 2H	OKANA (CDA FL155) - NI903 (K250-; 6500+; CDA FL104) - NI901 (K220-; 6500+; CDA 6600).
VAGEN 2H	VAGEN (CDA FL187) - NI905 (K250-; 6500+; CDA FL125) - NI903 (K250-; 6500+; CDA FL104) - NI901 (K220-; 6500+; CDA 6600).



43-30
 04
 03
 02
 01
 00
 01
 02
 03
 04
 05
 06
 07
 08
 09
 10
 11
 12
 13
 14
 15
 16
 17
 18
 19
 20
 21
 22
 23
 24
 25
 26
 27
 28
 29
 30
 31
 32
 33
 34
 35
 36
 37
 38
 39
 40
 41
 42
 43
 44
 45
 46
 47
 48
 49
 50
 51
 52
 53
 54
 55
 56
 57
 58
 59
 60
 61
 62
 63
 64
 65
 66
 67
 68
 69
 70
 71
 72
 73
 74
 75
 76
 77
 78
 79
 80
 81
 82
 83
 84
 85
 86
 87
 88
 89
 90
 91
 92
 93
 94
 95
 96
 97
 98
 99
 100
 101
 102
 103
 104
 105
 106
 107
 108
 109
 110
 111
 112
 113
 114
 115
 116
 117
 118
 119
 120
 121
 122
 123
 124
 125
 126
 127
 128
 129
 130
 131
 132
 133
 134
 135
 136
 137
 138
 139
 140
 141
 142
 143
 144
 145
 146
 147
 148
 149
 150
 151
 152
 153
 154
 155
 156
 157
 158
 159
 160
 161
 162
 163
 164
 165
 166
 167
 168
 169
 170
 171
 172
 173
 174
 175
 176
 177
 178
 179
 180
 181
 182
 183
 184
 185
 186
 187
 188
 189
 190
 191
 192
 193
 194
 195
 196
 197
 198
 199
 200
 201
 202
 203
 204
 205
 206
 207
 208
 209
 210
 211
 212
 213
 214
 215
 216
 217
 218
 219
 220
 221
 222
 223
 224
 225
 226
 227
 228
 229
 230
 231
 232
 233
 234
 235
 236
 237
 238
 239
 240
 241
 242
 243
 244
 245
 246
 247
 248
 249
 250
 251
 252
 253
 254
 255
 256
 257
 258
 259
 260
 261
 262
 263
 264
 265
 266
 267
 268
 269
 270
 271
 272
 273
 274
 275
 276
 277
 278
 279
 280
 281
 282
 283
 284
 285
 286
 287
 288
 289
 290
 291
 292
 293
 294
 295
 296
 297
 298
 299
 300
 301
 302
 303
 304
 305
 306
 307
 308
 309
 310
 311
 312
 313
 314
 315
 316
 317
 318
 319
 320
 321
 322
 323
 324
 325
 326
 327
 328
 329
 330
 331
 332
 333
 334
 335
 336
 337
 338
 339
 340
 341
 342
 343
 344
 345
 346
 347
 348
 349
 350
 351
 352
 353
 354
 355
 356
 357
 358
 359
 360
 361
 362
 363
 364
 365
 366
 367
 368
 369
 370
 371
 372
 373
 374
 375
 376
 377
 378
 379
 380
 381
 382
 383
 384
 385
 386
 387
 388
 389
 390
 391
 392
 393
 394
 395
 396
 397
 398
 399
 400
 401
 402
 403
 404
 405
 406
 407
 408
 409
 410
 411
 412
 413
 414
 415
 416
 417
 418
 419
 420
 421
 422
 423
 424
 425
 426
 427
 428
 429
 430
 431
 432
 433
 434
 435
 436
 437
 438
 439
 440
 441
 442
 443
 444
 445
 446
 447
 448
 449
 450
 451
 452
 453
 454
 455
 456
 457
 458
 459
 460
 461
 462
 463
 464
 465
 466
 467
 468
 469
 470
 471
 472
 473
 474
 475
 476
 477
 478
 479
 480
 481
 482
 483
 484
 485
 486
 487
 488
 489
 490
 491
 492
 493
 494
 495
 496
 497
 498
 499
 500
 501
 502
 503
 504
 505
 506
 507
 508
 509
 510
 511
 512
 513
 514
 515
 516
 517
 518
 519
 520
 521
 522
 523
 524
 525
 526
 527
 528
 529
 530
 531
 532
 533
 534
 535
 536
 537
 538
 539
 540
 541
 542
 543
 544
 545
 546
 547
 548
 549
 550
 551
 552
 553
 554
 555
 556
 557
 558
 559
 560
 561
 562
 563
 564
 565
 566
 567
 568
 569
 570
 571
 572
 573
 574
 575
 576
 577
 578
 579
 580
 581
 582
 583
 584
 585
 586
 587
 588
 589
 590
 591
 592
 593
 594
 595
 596
 597
 598
 599
 600
 601
 602
 603
 604
 605
 606
 607
 608
 609
 610
 611
 612
 613
 614
 615
 616
 617
 618
 619
 620
 621
 622
 623
 624
 625
 626
 627
 628
 629
 630
 631
 632
 633
 634
 635
 636
 637
 638
 639
 640
 641
 642
 643
 644
 645
 646
 647
 648
 649
 650
 651
 652
 653
 654
 655
 656
 657
 658
 659
 660
 661
 662
 663
 664
 665
 666
 667
 668
 669
 670
 671
 672
 673
 674
 675
 676
 677
 678
 679
 680
 681
 682
 683
 684
 685
 686
 687
 688
 689
 690
 691
 692
 693
 694
 695
 696
 697
 698
 699
 700
 701
 702
 703
 704
 705
 706
 707
 708
 709
 710
 711
 712
 713
 714
 715
 716
 717
 718
 719
 720
 721
 722
 723
 724
 725
 726
 727
 728
 729
 730
 731
 732
 733
 734
 735
 736
 737
 738
 739
 740
 741
 742
 743
 744
 745
 746
 747
 748
 749
 750
 751
 752
 753
 754
 755
 756
 757
 758
 759
 760
 761
 762
 763
 764
 765
 766
 767
 768
 769
 770
 771
 772
 773
 774
 775
 776
 777
 778
 779
 780
 781
 782
 783
 784
 785
 786
 787
 788
 789
 790
 791
 792
 793
 794
 795
 796
 797
 798
 799
 800
 801
 802
 803
 804
 805
 806
 807
 808
 809
 810
 811
 812
 813
 814
 815
 816
 817
 818
 819
 820
 821
 822
 823
 824
 825
 826
 827
 828
 829
 830
 831
 832
 833
 834
 835
 836
 837
 838
 839
 840
 841
 842
 843
 844
 845
 846
 847
 848
 849
 850
 851
 852
 853
 854
 855
 856
 857
 858
 859
 860
 861
 862
 863
 864
 865
 866
 867
 868
 869
 870
 871
 872
 873
 874
 875
 876
 877
 878
 879
 880
 881
 882
 883
 884
 885
 886
 887
 888
 889
 890
 891
 892
 893
 894
 895
 896
 897
 898
 899
 900
 901
 902
 903
 904
 905
 906
 907
 908
 909
 910
 911
 912
 913
 914
 915
 916
 917
 918
 919
 920
 921
 922
 923
 924
 925
 926
 927
 928
 929
 930
 931
 932
 933
 934
 935
 936
 937
 938
 939
 940
 941
 942
 943
 944
 945
 946
 947
 948
 949
 950
 951
 952
 953
 954
 955
 956
 957
 958
 959
 960
 961
 962
 963
 964
 965
 966
 967
 968
 969
 970
 971
 972
 973
 974
 975
 976
 977
 978
 979
 980
 981
 982
 983
 984
 985
 986
 987
 988
 989
 990
 991
 992
 993
 994
 995
 996
 997
 998
 999
 1000

LYNJ/INI
KONSTANTIN VELIKI

JEPPESEN
8 JUL 22 (10-2C)

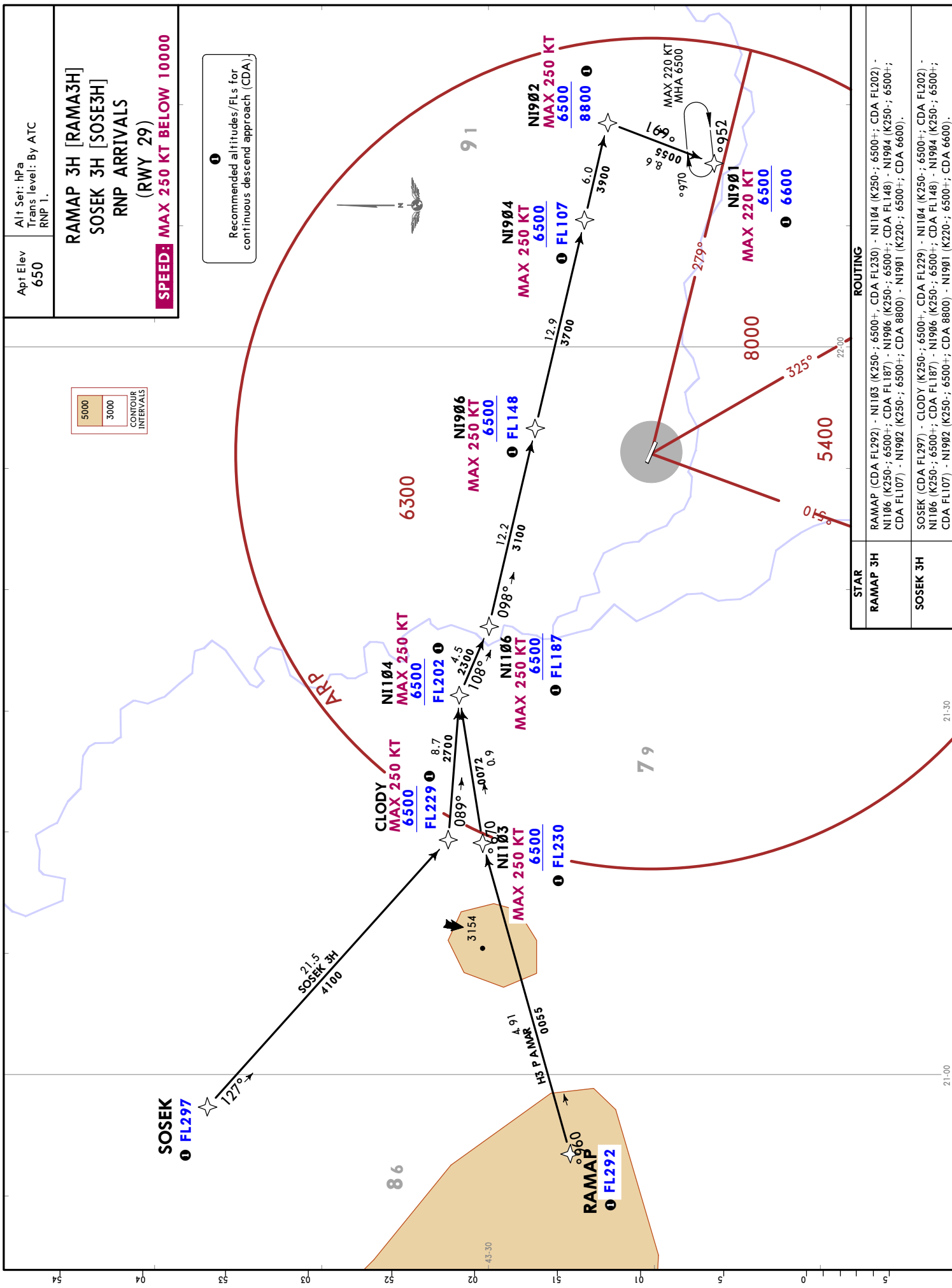
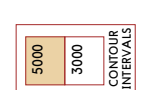
NIS, SERBIA
RNAV STAR

Alt Set: hPa
Trans level: By ATC
RNP 1.

Apt Elev
650

RAMAP 3H [RAMA3H]
SOSEK 3H [SOSE3H]
RNP ARRIVALS
(RWY 29)
SPEED: MAX 250 KT BELOW 10000

Recommended altitudes/FLs for continuous descend approach (CDA)



STAR	ROUTING
RAMAP 3H	RAMAP (CDA FL292) - NI103 (K250+; 6500+; CDA FL230) - NI104 (K250+; 6500+; CDA FL202) - NI106 (K250+; 6500+; CDA FL187) - NI1906 (K250+; 6500+; CDA FL148) - NI1904 (K250+; 6500+; CDA FL107) - NI1902 (K250+; 6500+; CDA 8800) - NI1901 (K220+; 6500+; CDA 6600).
SOSEK 3H	SOSEK (CDA FL297) - CLODY (K250+; 6500+; CDA FL229) - NI104 (K250+; 6500+; CDA FL202) - NI106 (K250+; 6500+; CDA FL187) - NI1906 (K250+; 6500+; CDA FL148) - NI1904 (K250+; 6500+; CDA FL107) - NI1902 (K250+; 6500+; CDA 8800) - NI1901 (K220+; 6500+; CDA 6600).

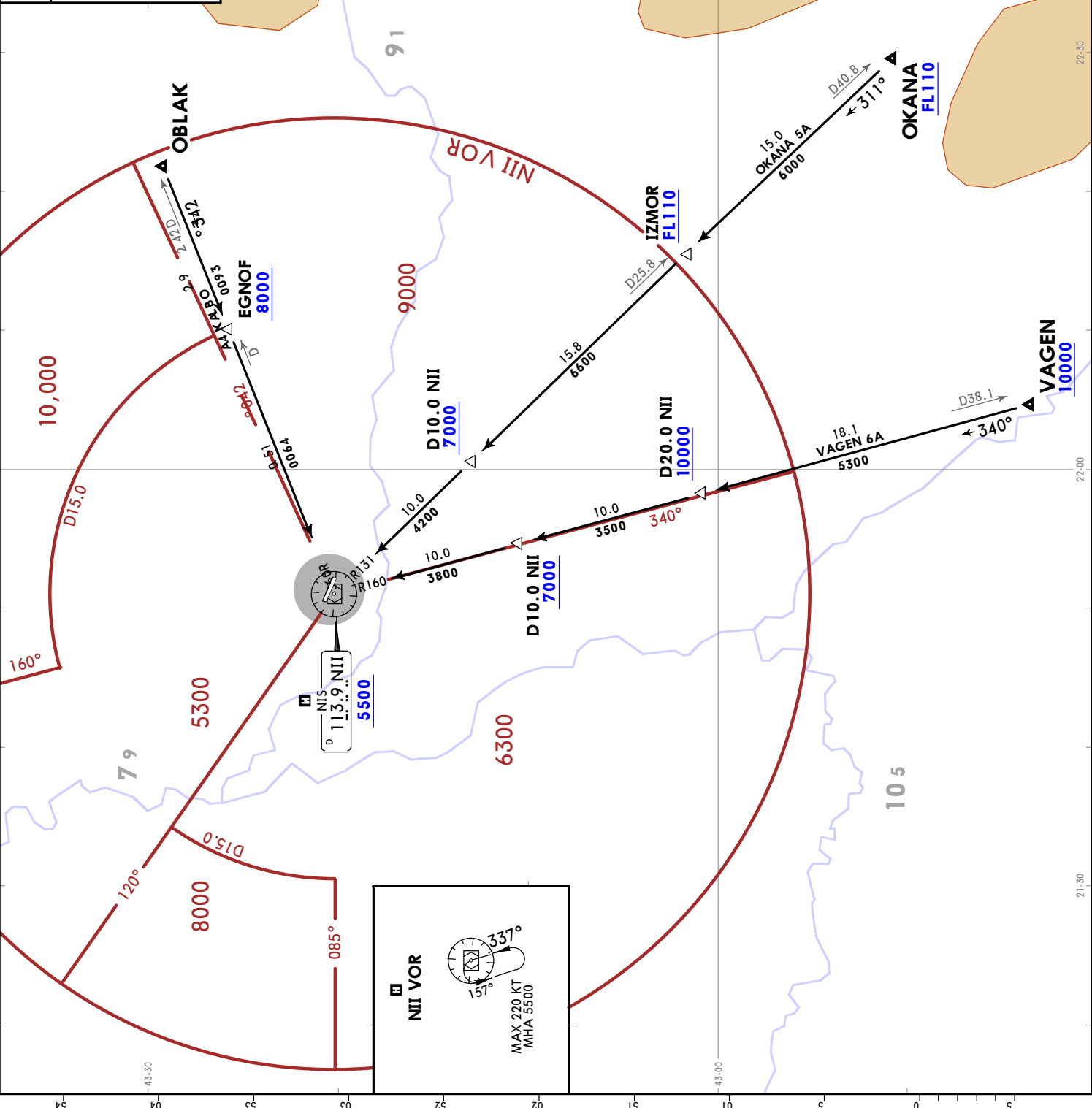
29 OCT 21 (10-2D) Eff 4 Nov

JEPPESEN NIS, SERBIA STAR

Apt Elev 650
 Alt Set: hPa
 Trans level: By ATC

OBLAK 4A [OBLA4A]
 OKANA 5A [OKAN5A]
 VAGEN 6A [VAGE6A]
 ARRIVALS
 (RWY 11)

SPEED: MAX 250 KT BELOW 10000



LYNI/INI
KONSTANTIN VELIKI

CHANGES: Procedures renumbered & revised; new format.

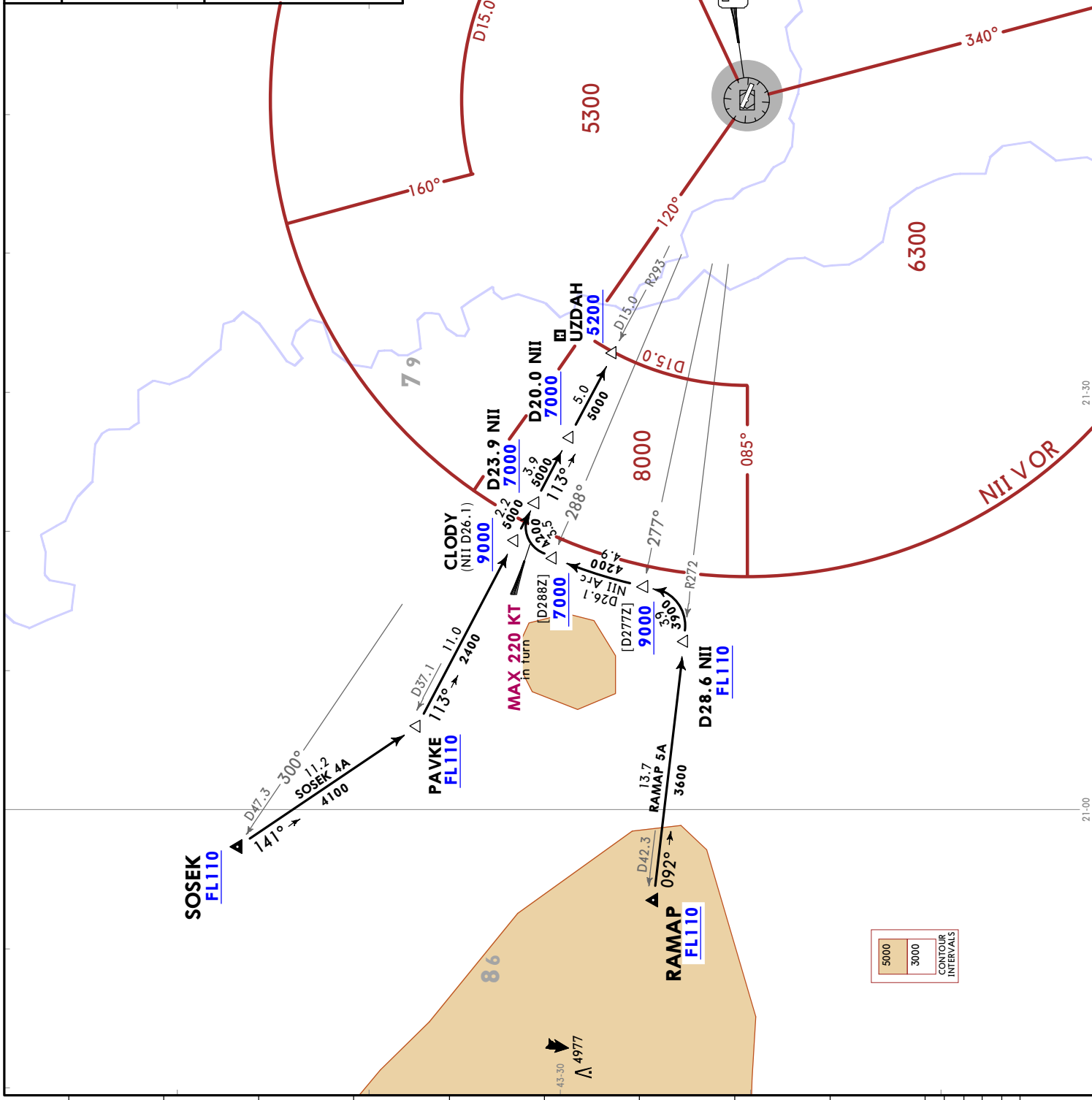
© JEPPESEN, 2021. ALL RIGHTS RESERVED.

NIS, SERBIA

JEPPesen
29 OCT 21 10-2E Eff 4 Nov

LYNJ/INI
KONSTANTIN VELIKI

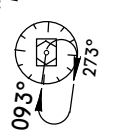
Apt Elev 650	Alt Set: hPa Trans level: By ATC
RAMAP 5A [RAMA5A] SOSEK 4A [SOSE4A] ARRIVALS (RWY 11) SPEED: MAX 250 KT BELOW 10000	
UZDAH D20.4 NII 113° 293° D20.0 NII MAX 220 KT MHA 6300 D15.0 R293 NII	

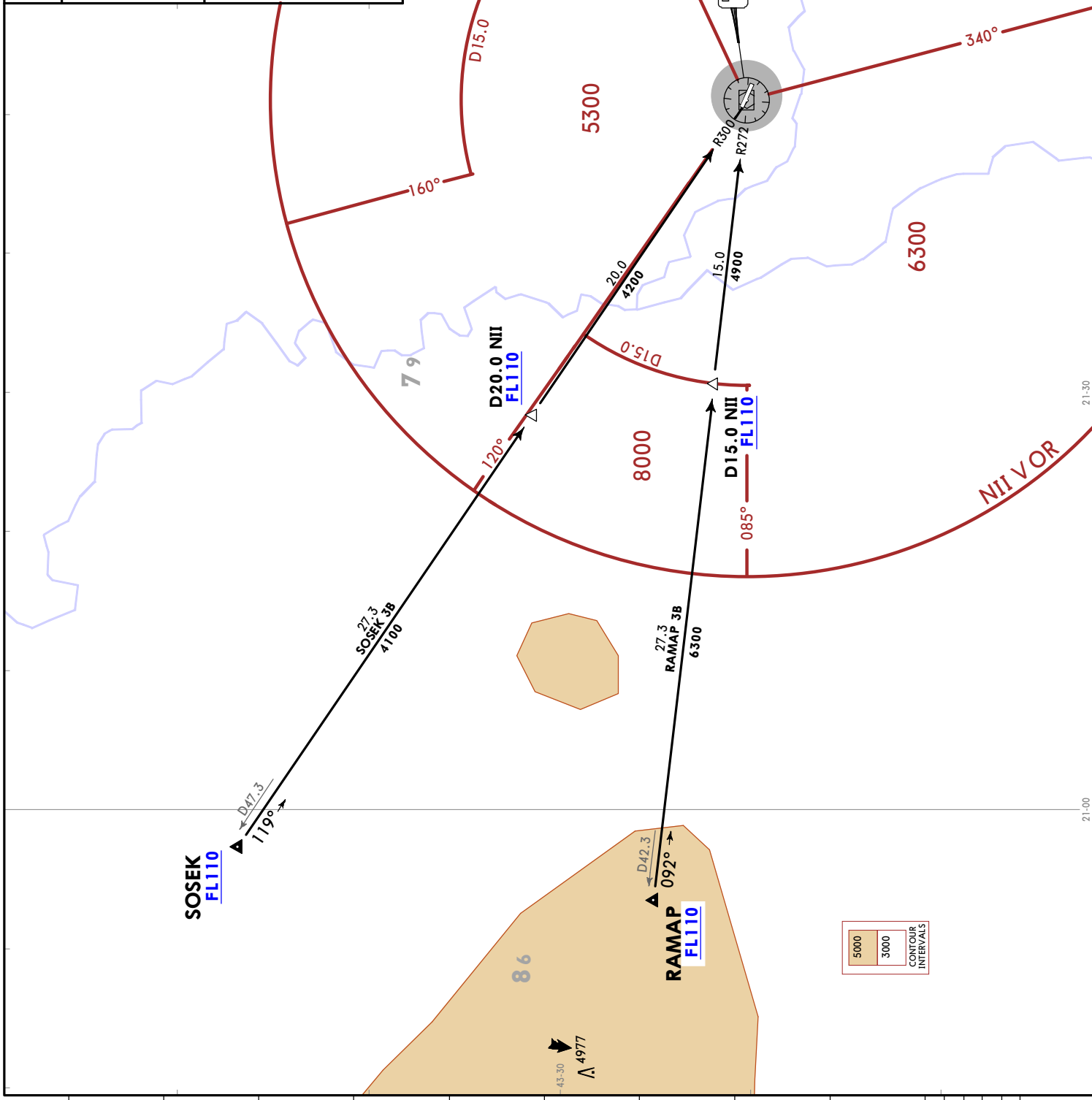


NIS, SERBIA
STAR

JEPPesen
29 OCT 21 10-2G Eff 4 Nov

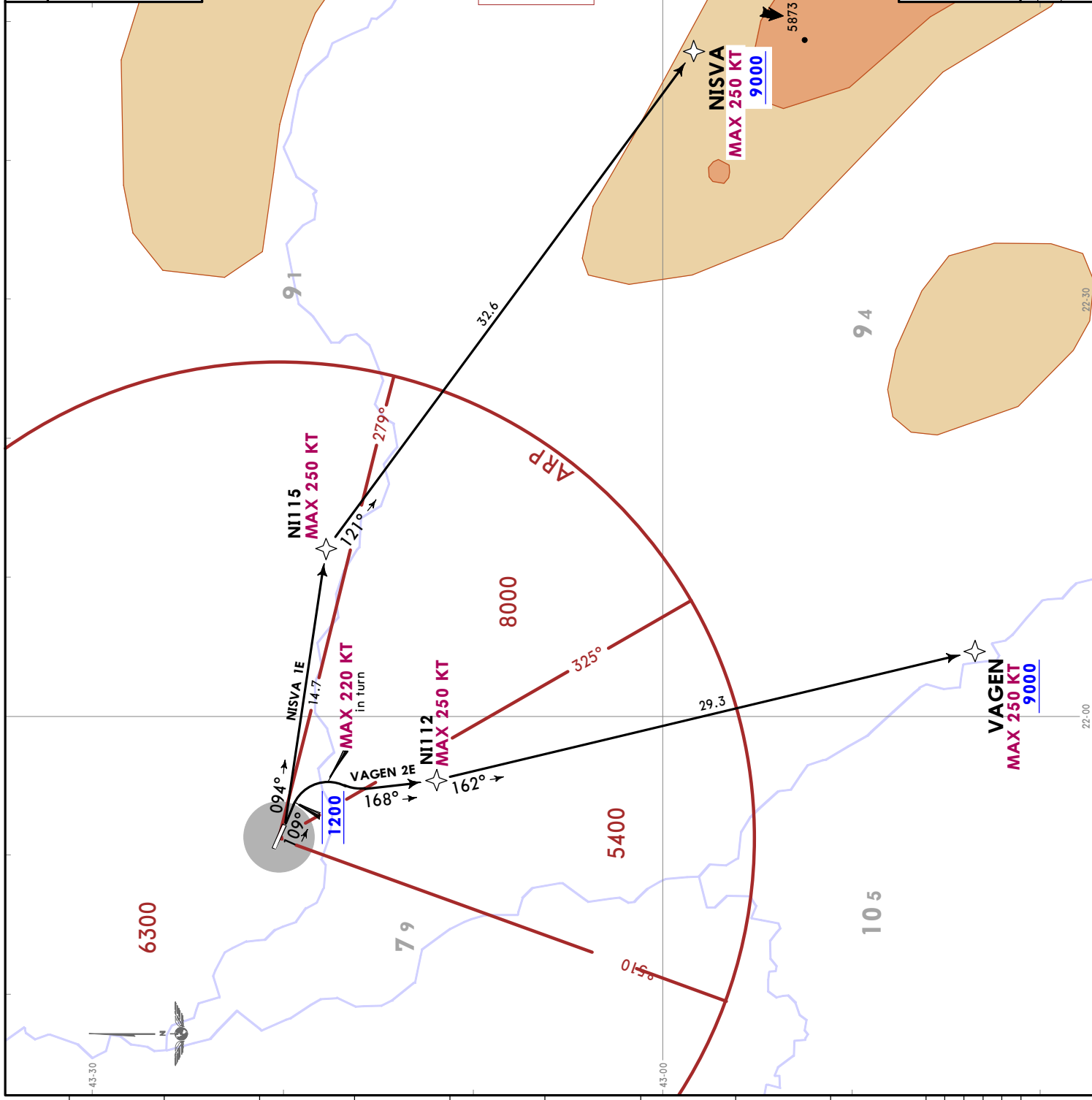
LYNJ/INI
KONSTANTIN VELIKI

Apt Elev 650	Alt Set: hPa Trans level: By ATC
RAMAP 3B [RAMA3B] SOSEK 3B [SOSE3B] ARRIVALS (RWY 29) SPEED: MAX 250 KT BELOW 10000	
NII VOR MAX 220 KT MHA 5500 	



29 OCT 21 10-3 Eff 4 Nov
JEPPESEN
NIS, SERBIA
RNAV SID

Apf Elev 650
 RNP 1.
 Trans alt: 10000
NISVA 1E [NISV1E]
VAGEN 2E [VAGE2E]
RNP DEPARTURES
(RWY 11)
SPEED: MAX 250 KT BELOW 10000



These SIDs require minimum climb gradients of:

NISVA 1E: 5.9% until 2100.
VAGEN 2E: 5.8% until 3100.

Gnd speed-KT	75	100	150	200	250	300
5.8% V/V (fpm)	441	587	881	1175	1468	1762
5.9% V/V (fpm)	448	597	896	1195	1494	1792

SID	ROUTING
NISVA 1E	N1115 (K250-) - NISVA (K250-, 9000+).
VAGEN 2E	(K220-; 1200) - N1112 (K250-) - VAGEN (K250-; 9000+).

LYNI/INI
KONSTANTIN VELIKI

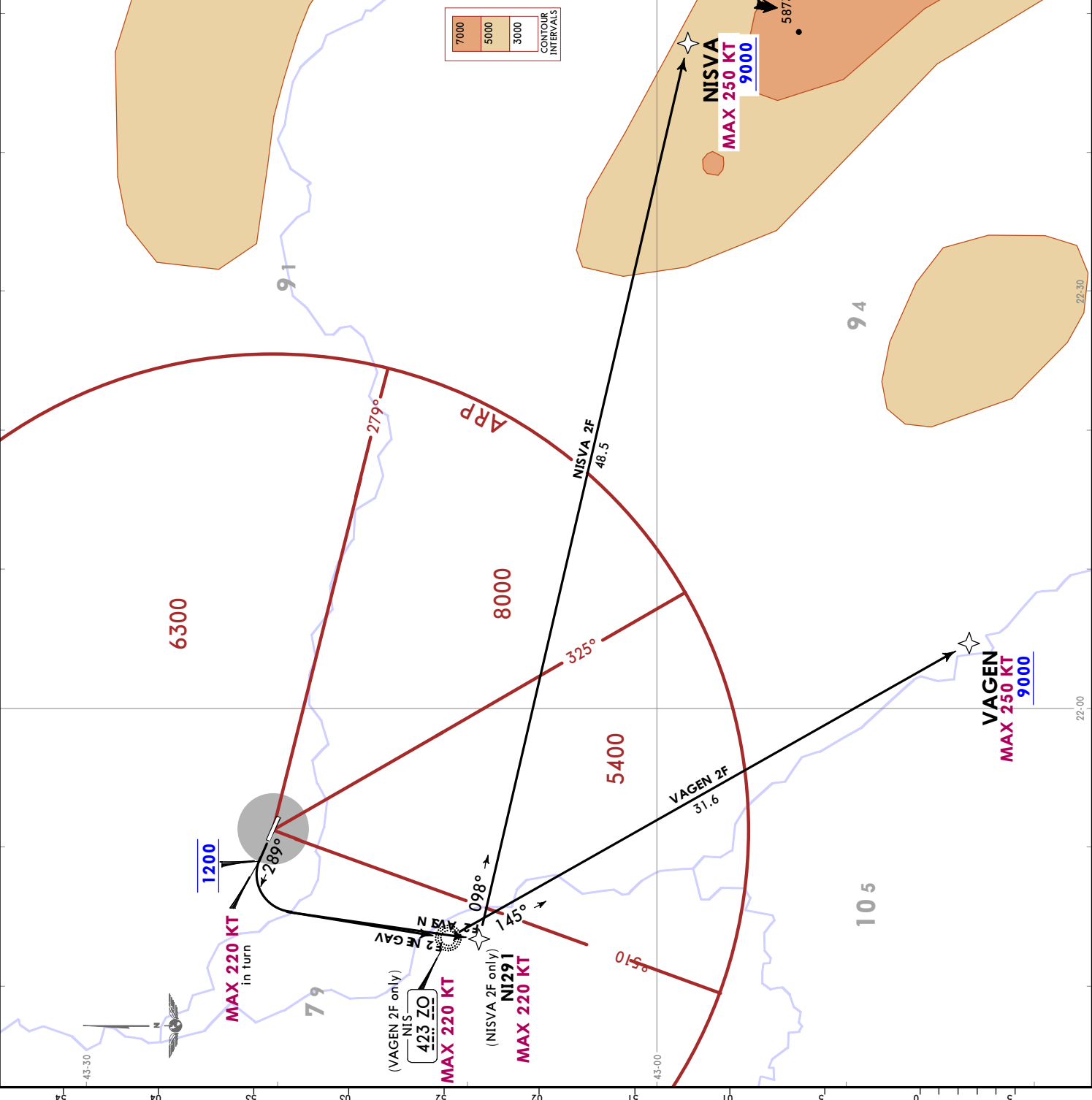
JEPPesen
 29 OCT 21 (10-3A) Eff 4 Nov
LYNI/INI
 KONSTANTIN VELIKI

NIS, SERBIA
RNAV SID

Trans alt: 10000
 RNP 1.
 Apt Elev
 650

NISVA 2F [NISV2F]
VAGEN 2F [VAGE2F]
RNP DEPARTURES
(RWY 29)

SPEED: MAX 250 KT BELOW 10000



Close-in obstacle
 Pole 0.03 NM from DER, alt 680.

These SIDs require a minimum climb gradient of:
 3.8% until 2000.

Gnd speed-KT	75	100	150	200	250	300
3.8% V/V (fpm)	289	385	577	770	962	1154

SID	ROUTING
NISVA 2F	(K220-; 1200) - NI291 (K220-) - NISVA (K250-, 9000+).
VAGEN 2F	(K220-; 1200) - ZO NDB (K220-) - VAGEN (K250-; 9000+).

29 OCT 21 10-3B Eff 4 Nov

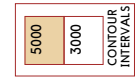
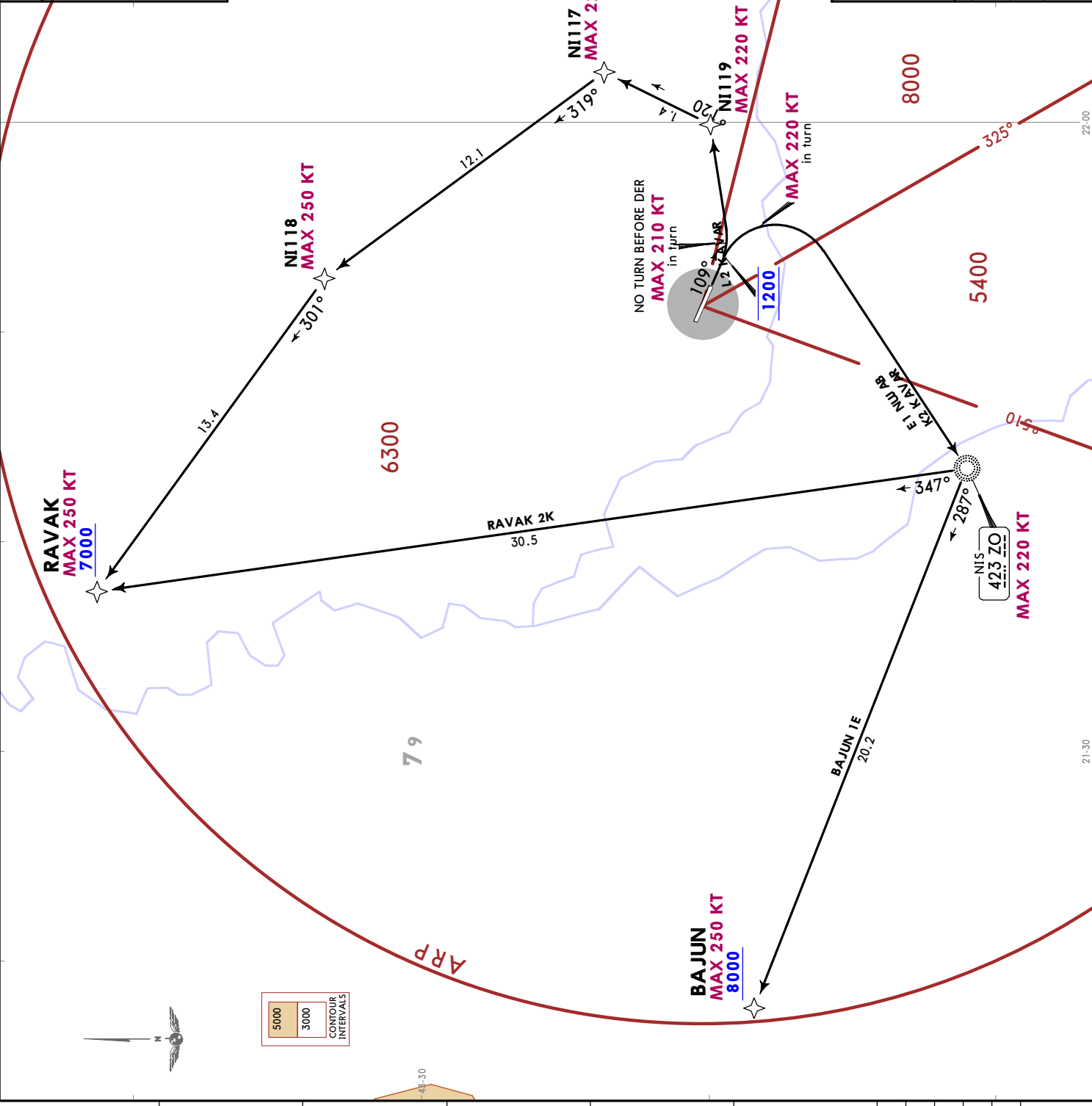
JEPPESSEN NIS, SERBIA
 LYNI/INI KONSTANTIN VELIKI

Trans alt: 10000
 RNP 1.
 Apt Elev 650
BAJUN 1E [BAJU1E]
RAVAK 2K [RAVA2K]
RAVAK 2L [RAVA2L]
RNP DEPARTURES (RWY 11)
SPEED: MAX 250 KT BELOW 10000

These SIDs require minimum climb gradients of:	
BAJUN 1E, RAVAK 2K: 5.8% until 3100.	
RAVAK 2L: 6.2% until 3100.	

Grnd speed-KT	75	100	150	200	250	300
5.8% V/V (fpm)	441	587	881	1175	1468	1762
6.2% V/V (fpm)	471	628	942	1256	1570	1884

SID		ROUTING	
BAJUN 1E	(K220-; 1200) - ZO NDB (K220-) - BAJUN (K250-; 8000+).		
RAVAK 2K	(K220-; 1200) - ZO NDB (K220-) - RAVAK (K250-; 7000+).		
RAVAK 2L	(K210-; 1200) - NI119 (K220-) - NI117 (K220-) - NI118 (K250-) - RAVAK (K250-; 7000+).		

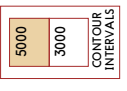
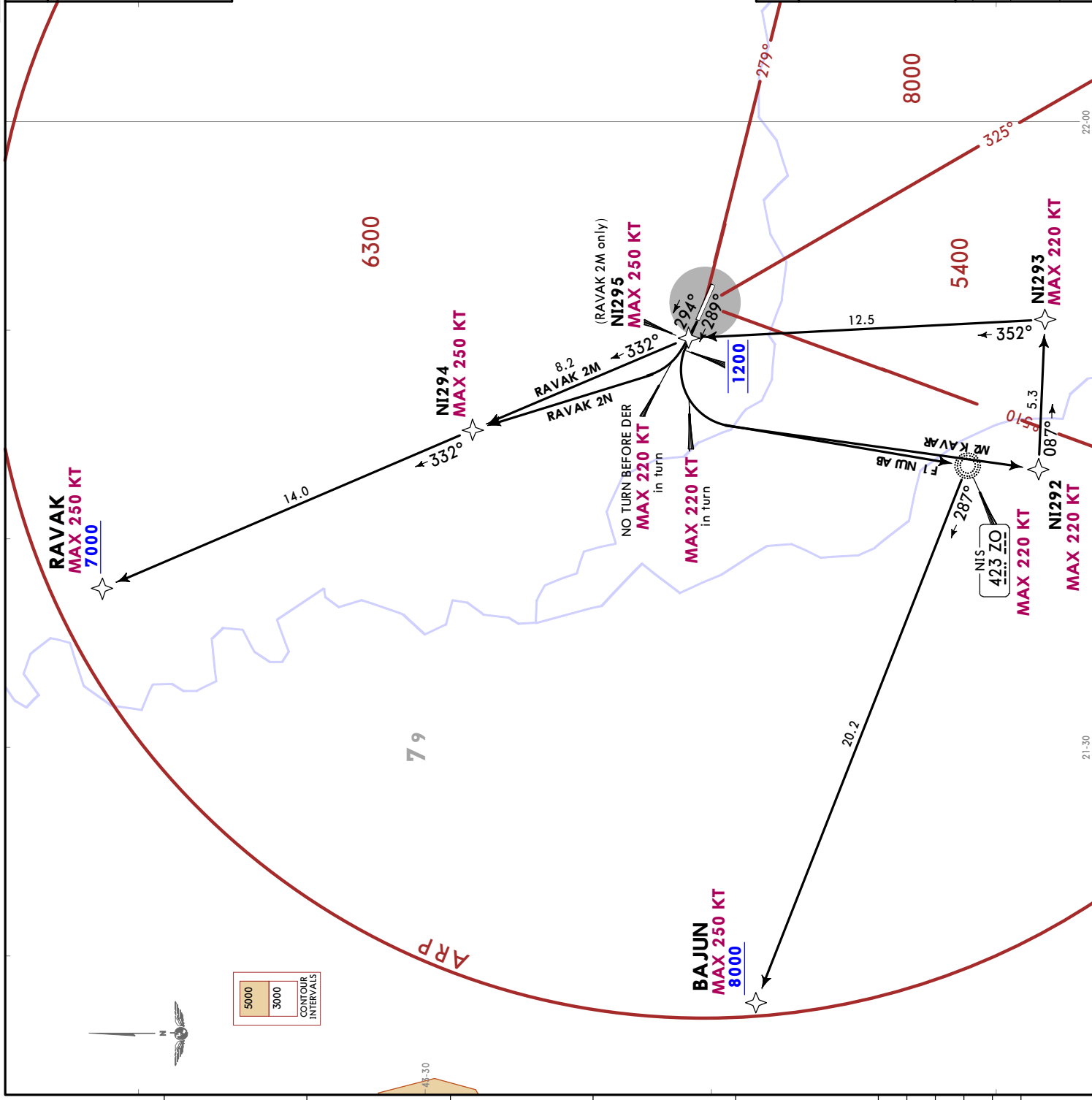


NIS, SERBIA
RNAV SID

JEPPESEN
 29 OCT 21 (10-3C) Eff: 4 Nov

LYNI/INI
 KONSTANTIN VELIKI

Apt Elev 650	Trans alt: RNP 1. 10000
BAJUN 1F [BAJU1F] RAVAK 2M [RAVA2M] RAVAK 2N [RAVA2N] RNP DEPARTURES (RWY 29)	
SPEED: MAX 250 KT BELOW 10000	



Close-in obstacle
 Pole 0.03 NM from DER, alt 680.

These SIDs require minimum climb gradients of:

BAJUN 1F: 4.0% until 8000.
RAVAK 2M: 3.8% until 2000.
RAVAK 2N: 4.5% until 7000.

Gnd speed-KT	75	100	150	200	250	300
3.8% V/V (fpm)	289	385	577	770	962	1154
4.0% V/V (fpm)	304	405	608	810	1013	1215
4.5% V/V (fpm)	342	456	684	911	1139	1367

SID	ROUTING
BAJUN 1F	(K220-; 1200) - ZO NDB (K220-) - BAJUN (K250-; 8000+).
RAVAK 2M	(K220-; 1200) - NI292 (K220-) - NI293 (K220-; NI295 (K250-) - NI294 (K250-; RAVAK (K250-; 7000+).
RAVAK 2N	(K220-; 1200) - NI294 (K250-) - RAVAK (K250-; 7000+).

29 OCT 21 10-3D Eff 4 Nov

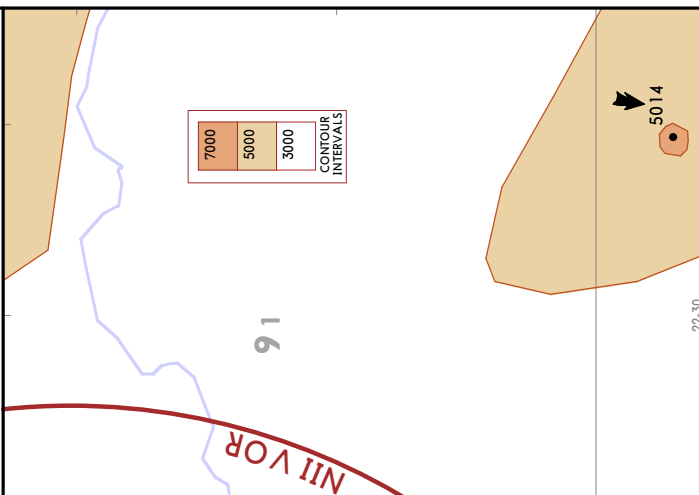
JEPPESSEN NIS, SERBIA

LYNI/INI KONSTANTIN VELIKI

Appt Elev 650
 Trans alt: 10000
 No turn before DER.

AZBUX 1C [AZBU1C]
BAJUN 1C [BAJU1C]
VAGEN 7C [VAGE7C]
 DEPARTURES
 (RWY 11)

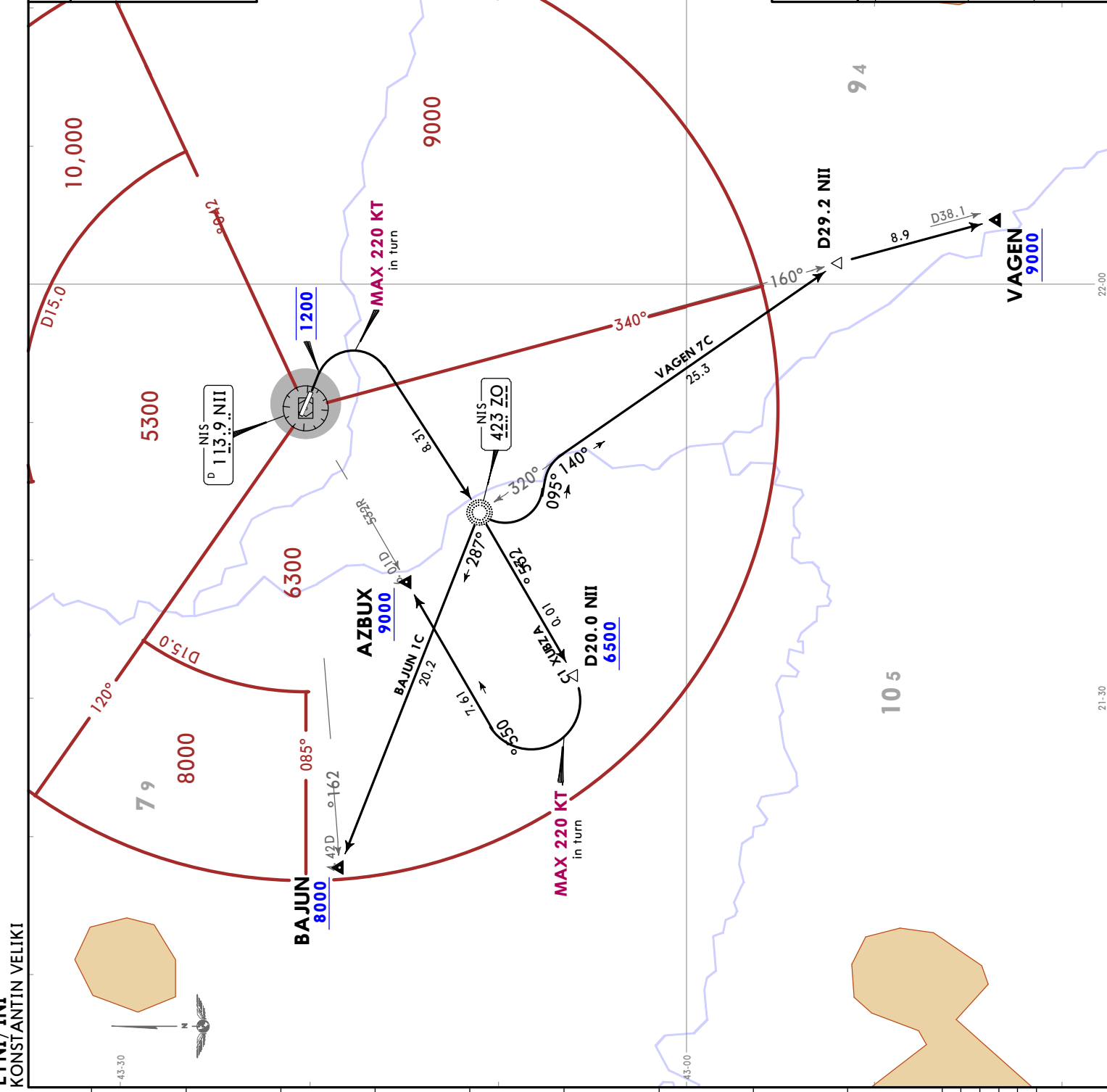
SPEED: MAX 250 KT BELOW 10000



These SIDs require a minimum climb gradient of: 5.8% (352 per NM) until 3200.

Grd speed-KT	75	100	150	200	250	300
5.8% V/V (fpm)	441	587	881	1175	1468	1762

SID	ROUTING
AZBUX 1C	Climb straight ahead, at 1200 turn RIGHT (MAX 220 KT) to ZO NDB, intercept 235° bearing from ZO NDB until crossing D20.0 NII at or above 6500, turn RIGHT (MAX 220 KT) to intercept NII R235 to cross AZBUX at or above 9000.
BAJUN 1C	Climb straight ahead, at 1200 turn RIGHT (MAX 220 KT) to ZO NDB, turn RIGHT, intercept 287° bearing from ZO NDB to cross BAJUN at or above 8000.
VAGEN 7C	Climb straight ahead, at 1200 turn RIGHT (MAX 220 KT) to ZO NDB, turn LEFT, 095° track, intercept 140° bearing from ZO NDB, at D29.2 NII intercept NII R 160 to cross VAGEN at or above 9000.



LYNI/INI
KONSTANTIN VELIKI

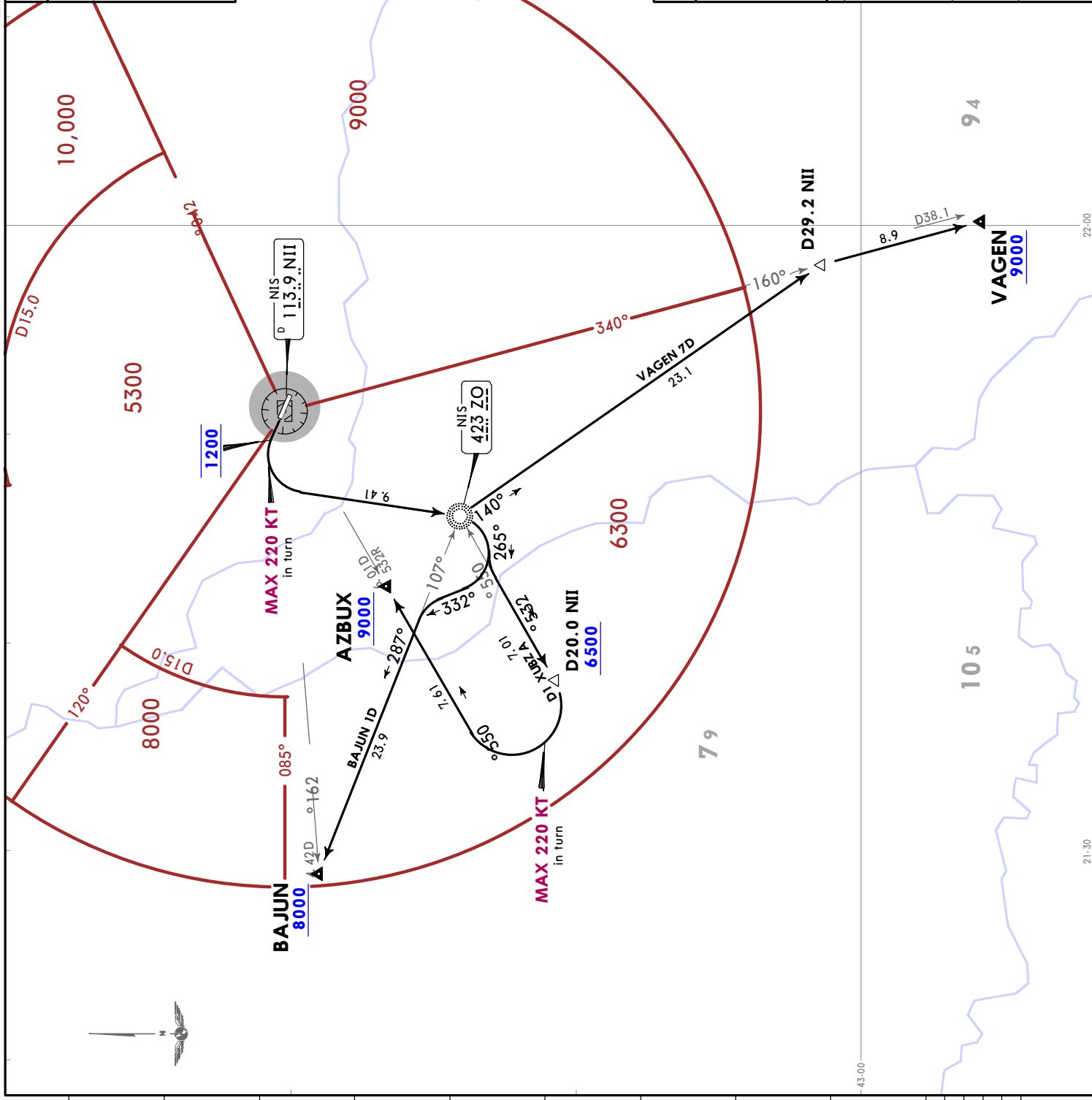
JEPPESEN
29 OCT 21 10-3E Eff 4 Nov

NIS, SERBIA
SID

Apt Elev 650 Trans alt: 10000

AZBUX 1D [AZBU1D]
BAJUN 1D [BAJU1D]
VAGEN 7D [VAGE7D]
DEPARTURES
(RWY 29)

SPEED: MAX 250 KT BELOW 10000



Close-in obstacles
Pole 0.03 NM from DER, alt 680.

These SIDs require minimum climb gradients of:
AZBUX 1D, BAJUN 1D: 3.9% (237 per NM) until 4700.
VAGEN 7D: 3.8% (231 per NM) until 2000.

Gnd speed-KT	75	100	150	200	250	300
3.8% V/V (fpm)	289	385	577	770	962	1154
3.9% V/V (fpm)	296	395	592	790	987	1185

SID		ROUTING
AZBUX 1D		Climb straight ahead, at 1200 turn LEFT (MAX 220 KT), to ZO NDB, turn RIGHT, 265° track, intercept 235° bearing from ZO NDB to cross D20.0 NII at or above 6500, turn RIGHT (MAX 220 KT) to intercept NII R235 to cross AZBUX at or above 9000.
BAJUN 1D		Climb straight ahead, at 1200 turn LEFT (MAX 220 KT) to ZO NDB, turn RIGHT, 332° track to intercept 287° bearing from ZO NDB to cross BAJUN at or above 8000.
VAGEN 7D		Climb straight ahead, at 1200 turn LEFT (MAX 220 KT) to ZO NDB, turn LEFT, 140° bearing from ZO NDB, at D29.2 NII intercept NII R 160 to cross VAGEN at or above 9000.

CHANGES: BAJUN & AZBUX 1D established; VAGEN 7D renumbered & revised; new format.

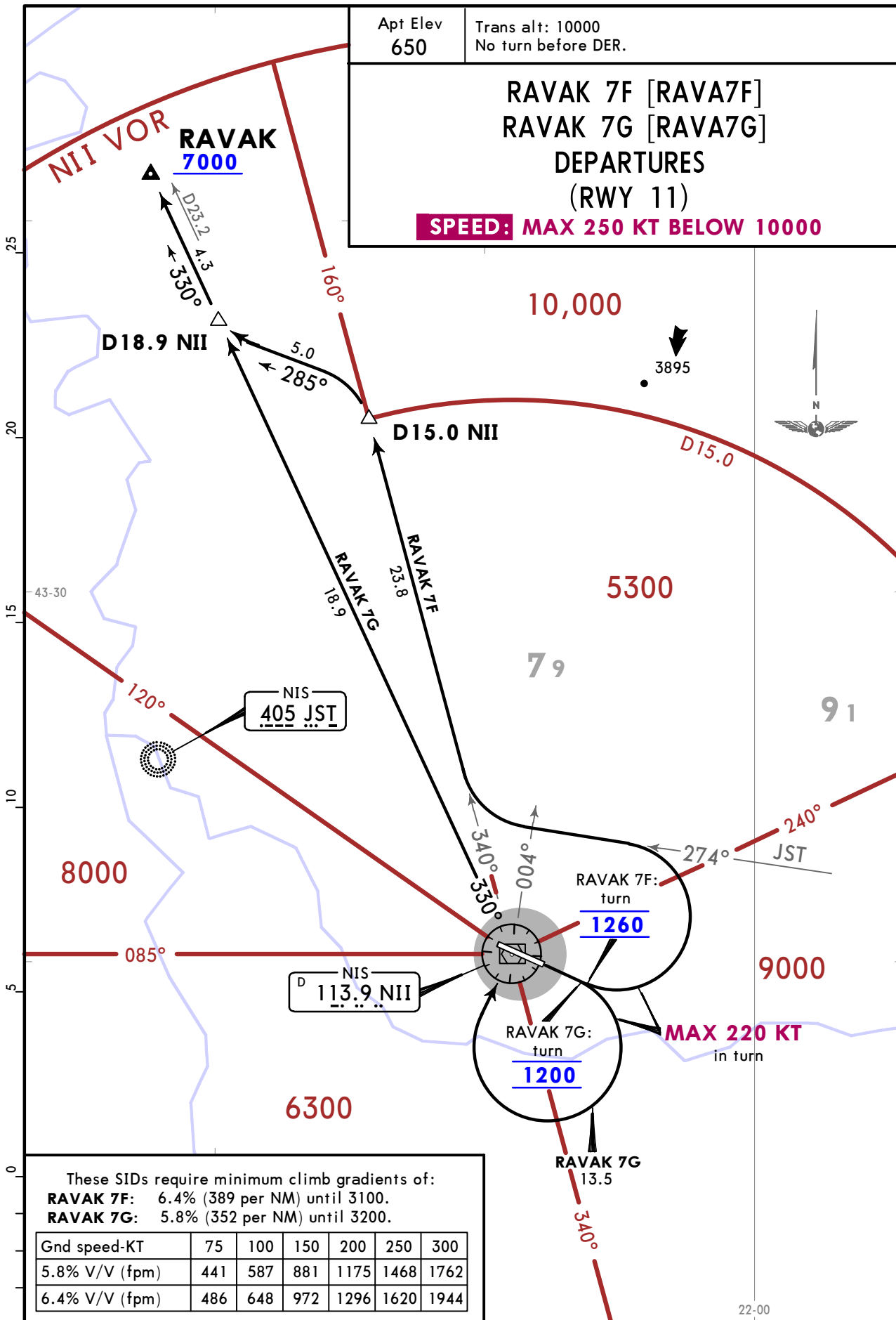
LYNI/INI
KONSTANTIN VELIKI

JEPPESEN
29 OCT 21 10-3F Eff 4 Nov

NIS, SERBIA
SID

Apt Elev 650
Trans alt: 10000
No turn before DER.

RAVAK 7F [RAVA7F]
RAVAK 7G [RAVA7G]
DEPARTURES
(RWY 11)
SPEED: MAX 250 KT BELOW 10000



These SIDs require minimum climb gradients of:
RAVAK 7F: 6.4% (389 per NM) until 3100.
RAVAK 7G: 5.8% (352 per NM) until 3200.

Gnd speed-KT	75	100	150	200	250	300
5.8% V/V (fpm)	441	587	881	1175	1468	1762
6.4% V/V (fpm)	486	648	972	1296	1620	1944

SID	ROUTING
RAVAK 7F	Climb straight ahead. At 1260 turn LEFT (MAX 220 KT), 274° bearing towards JST NDB, when crossing R004 NII turn RIGHT to intercept R340 NII to D15.0 NII, turn LEFT, 285° track, at D18.9 NII intercept R330 NII to cross RAVAK at or above 7000.
RAVAK 7G	Climb straight ahead. At 1200 turn RIGHT (MAX 220 KT) to NII VOR, turn LEFT, intercept R330 NII to cross RAVAK at or above 7000.

LYNI/INI
KONSTANTIN VELIKI

JEPPESEN

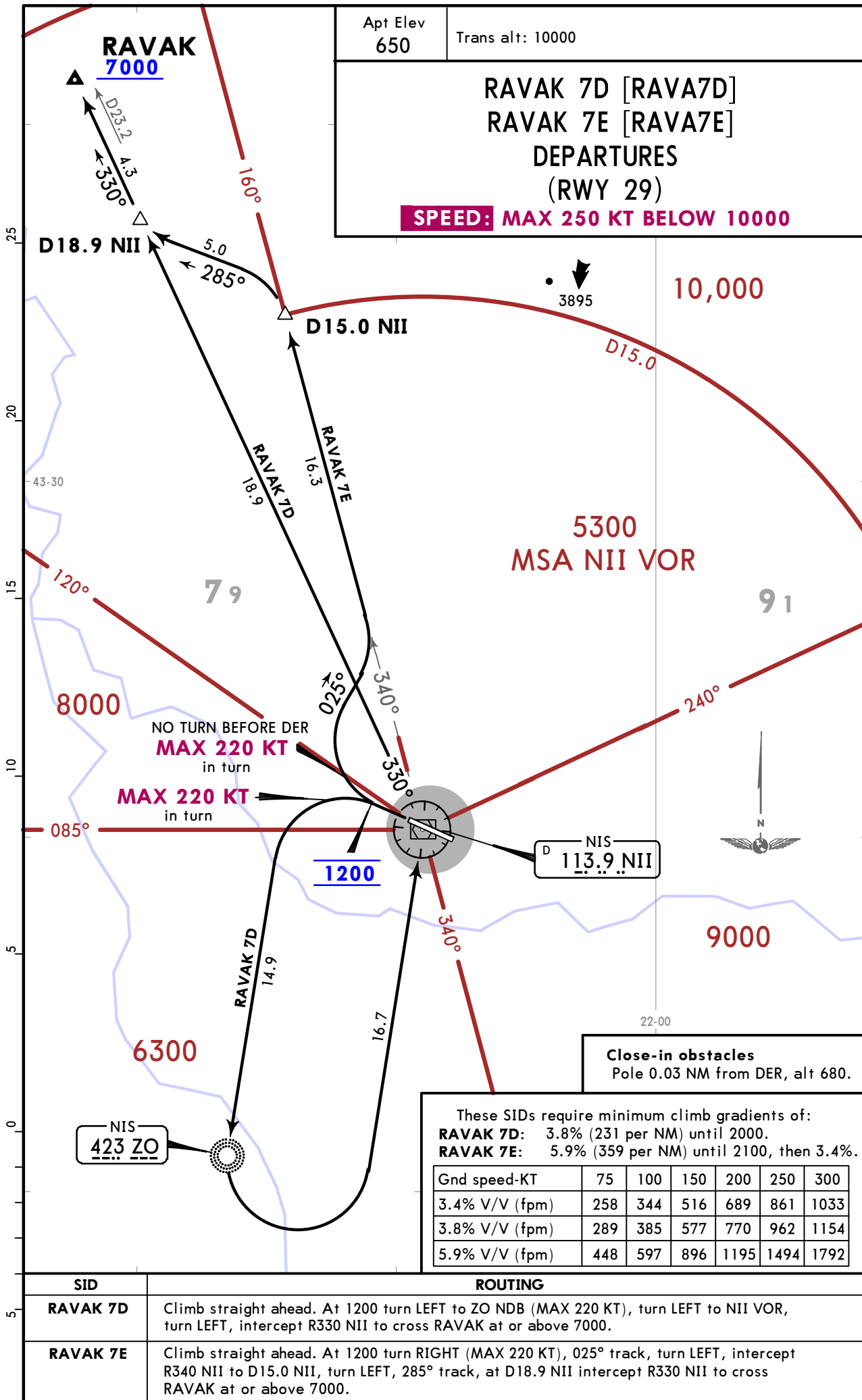
NIS, SERBIA

29 OCT 21

10-3G

Eff 4 Nov

SID



Apt Elev 650	Trans alt: 10000
RAVAK 7D [RAVA7D] RAVAK 7E [RAVA7E] DEPARTURES (RWY 29) SPEED: MAX 250 KT BELOW 10000	

Close-in obstacles
Pole 0.03 NM from DER, alt 680.

These SIDs require minimum climb gradients of:
RAVAK 7D: 3.8% (231 per NM) until 2000.
RAVAK 7E: 5.9% (359 per NM) until 2100, then 3.4%.

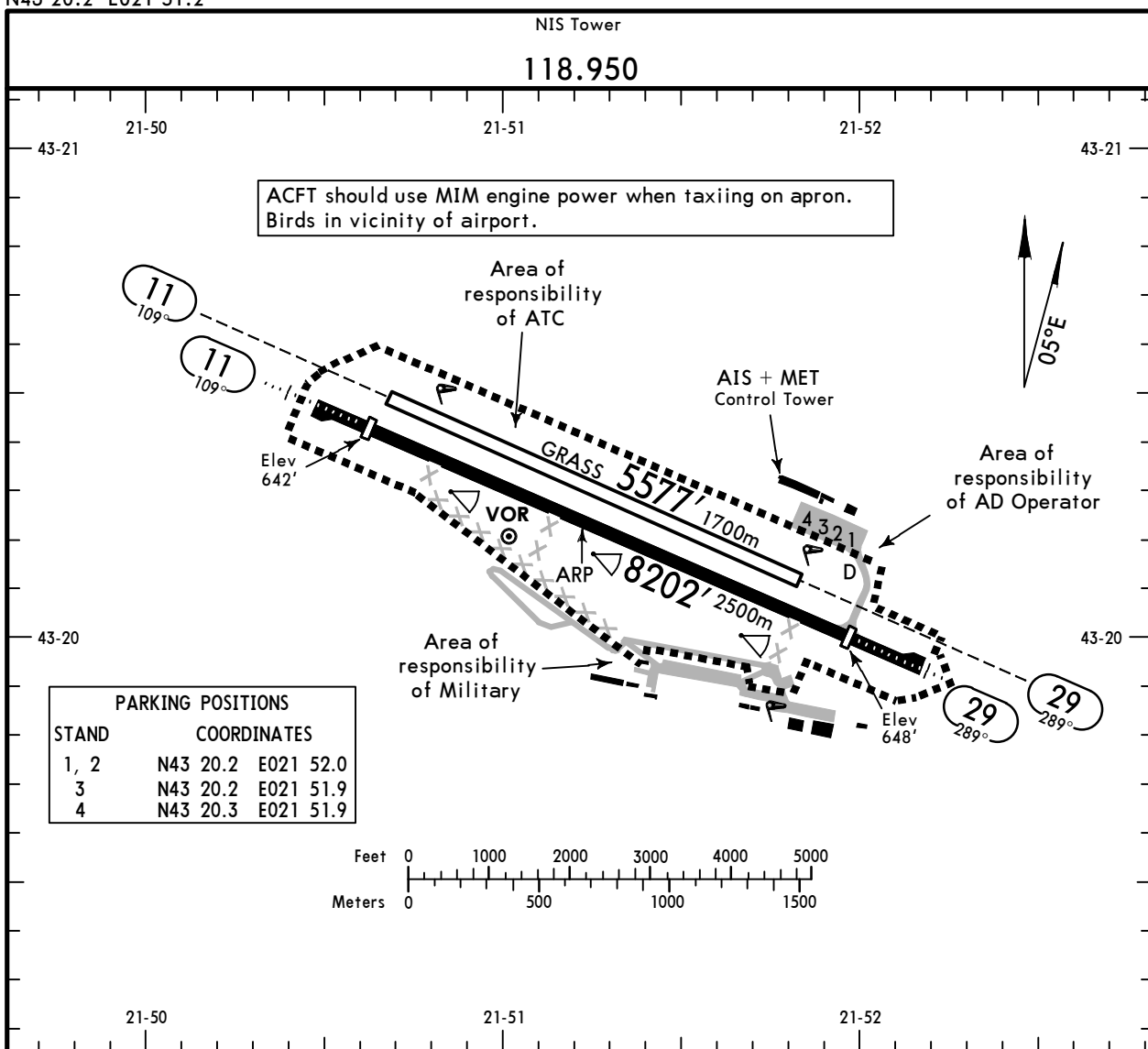
Gnd speed-KT	75	100	150	200	250	300
3.4% V/V (fpm)	258	344	516	689	861	1033
3.8% V/V (fpm)	289	385	577	770	962	1154
5.9% V/V (fpm)	448	597	896	1195	1494	1792

SID	ROUTING
RAVAK 7D	Climb straight ahead. At 1200 turn LEFT to ZO NDB (MAX 220 KT), turn LEFT to NII VOR, turn LEFT, intercept R330 NII to cross RAVAK at or above 7000.
RAVAK 7E	Climb straight ahead. At 1200 turn RIGHT (MAX 220 KT), 025° track, turn LEFT, intercept R340 NII to D15.0 NII, turn LEFT, 285° track, at D18.9 NII intercept R330 NII to cross RAVAK at or above 7000.

LYNI/INI
 Apt Elev **650'**
 N43 20.2 E021 51.2

JEPPesen
 22 OCT 21 **(10-9)** Eff 4 Nov

NIS, SERBIA
 KONSTANTIN VELIKI



ADDITIONAL RUNWAY INFORMATION						
RWY			USABLE LENGTHS		TAKE-OFF	WIDTH
			LANDING BEYOND	GLIDE SLOPE		
			Threshold	Glide Slope		
11	29	HIRL (60m) HIALS PAPI-L (3.5°)	RVR	7483' 2281m		148'
				7218' 2200m	6246' 1904m	45m
11	29	Grass runway				164'
						50m

① TAKE-OFF RUN AVAILABLE
RWY 29:
 From rwy head 8202' (2500m)
 twy D int 7218' (2200m)

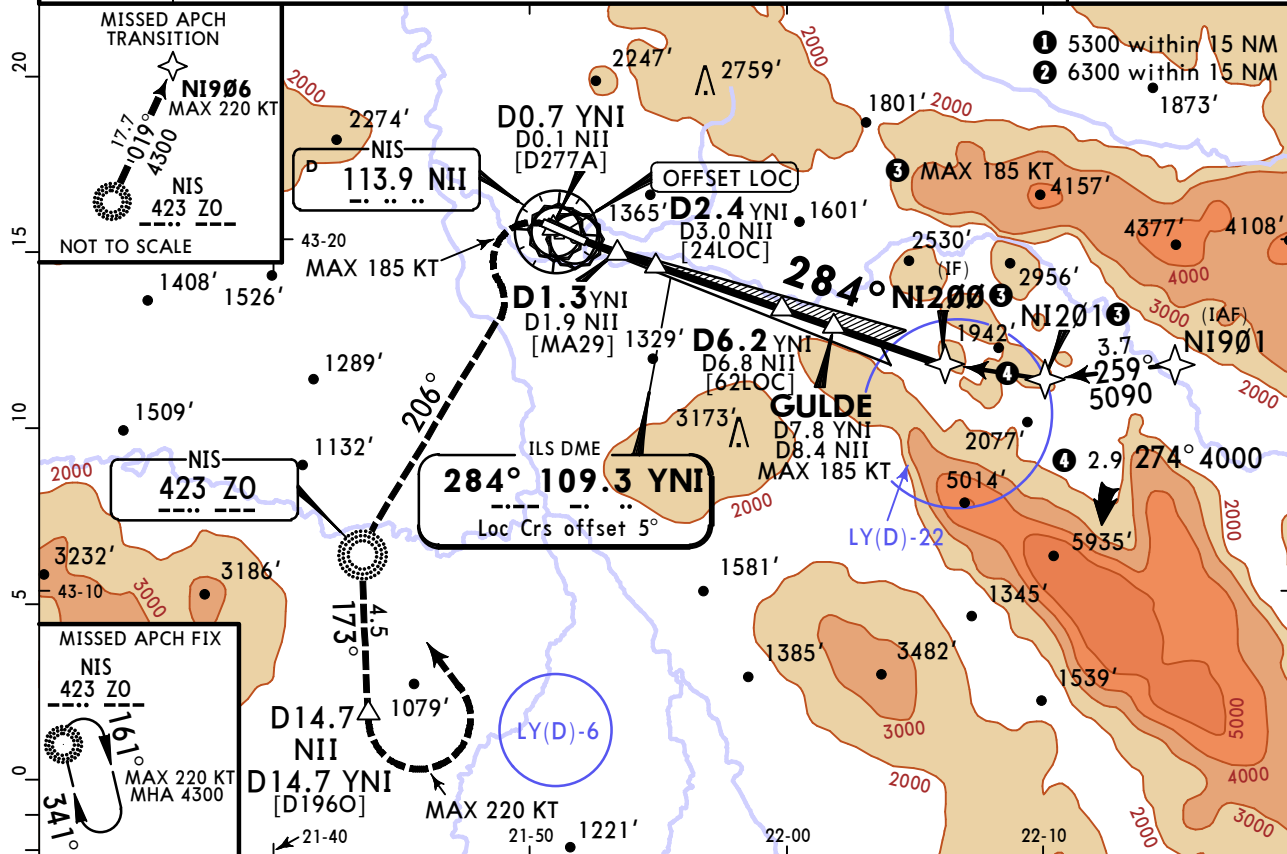
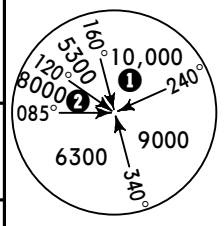
Std/State		TAKE-OFF			
Low Visibility Take-off		RL or RCLM	RL	Adequate Vis Ref	
RL & RCLM	RL				
DAY	NIGHT	DAY	NIGHT	DAY	NIGHT
R300m		R/V400m		R/V500m	NA

LYNI/INI
KONSTANTIN VELIKI

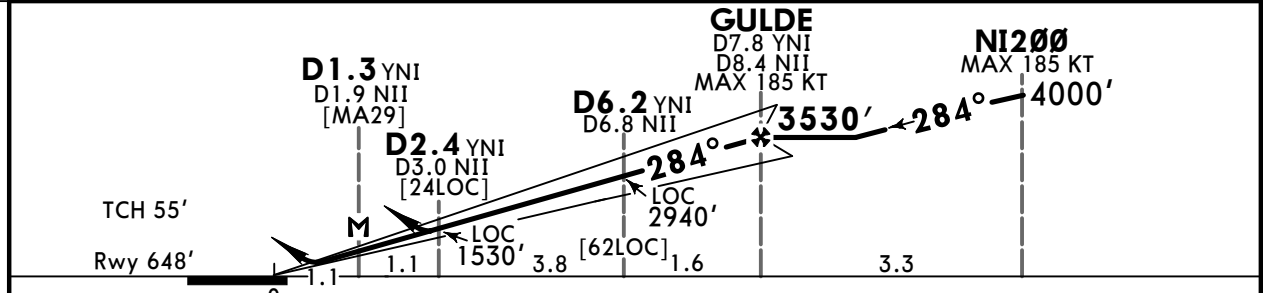
JEPPESEN
 18 FEB 22
Eff 24 Feb (11-2) **CAT A, B & C**

NIS, SERBIA
ILS or LOC Y Rwy 29

NIS Approach 119.525			NIS Tower 118.950		
LOC YNI 109.3	Final Apch Crs 284°	GULDE 3530' (2882')	ILS DA(H) 950' (302')	Apt Elev 650'	Rwy 648'
MISSED APCH: Climb STRAIGHT AHEAD. At D0.7 YNI/D0.1 NII turn LEFT (MAX 185 KT) to ZO NDB onto 206°. At ZO NDB turn LEFT onto 173° from ZO NDB. At D14.7 NII/D14.7 YNI turn LEFT (MAX 220 KT) inbound ZO NDB climbing to 4300' and hold.					
Alt Set: hPa		Rwy Elev: 24 hPa		Trans level: By ATC	
RNP Apch.		DME required.		MSA NII VOR	



LOC (GS out)	YNI DME	2.0	3.0	4.0	5.0	6.0	7.0
	NII DME	2.6	3.6	4.6	5.6	6.6	7.6
	ALTITUDE	1390'	1760'	2130'	2500'	2870'	3240'



Gnd speed-Kts	70	90	100	120	140	160	HIALS	D0.7 YNI	185 KT	ZO	hdg
GS	3.50°	434	557	619	743	867					
MAP at D1.3 YNI/D1.9 NII											
Timing not authorized for defining the MAP.											

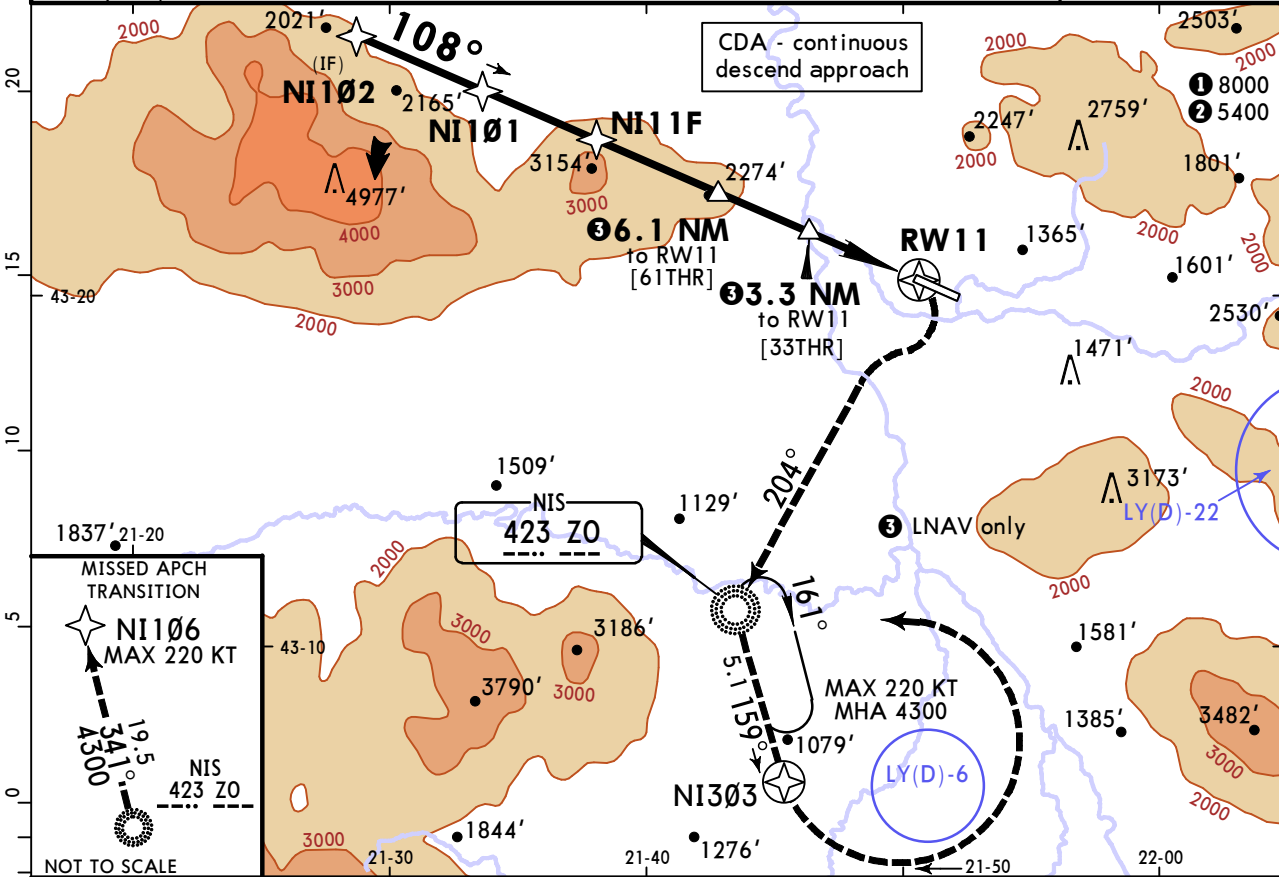
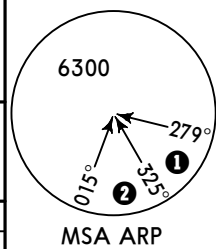
PANS OPS	Std/State		STRAIGHT-IN LANDING				CIRCLE-TO-LAND	
	ILS		LOC (GS out)				Not authorized	
	DA(H) 950' (302')		DA/MDA(H) 1150' (502')				Northeast of airport	
	FULL		ALS out				between 297° and 100°	
	A		R1000m				MDA(H)	
B		R1400m				1280' (630') V1500m		
C		R1900m				1570' (920') V1600m		
D		NOT APPLICABLE				1870' (1220') V2400m		
D		NOT APPLICABLE				NOT APPLICABLE		

LYNI/INI KONSTANTIN VELIKI

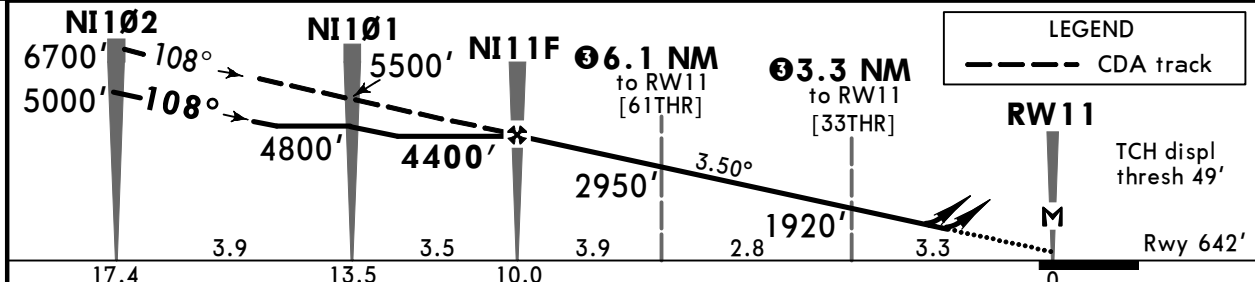
JEPPESEN
22 OCT 21 (12-1) Eff 4 Nov

NIS, SERBIA RNP Rwy 11

NIS Approach 119.525				NIS Tower 118.950	
RNAV	Final Apch Crs 108°	NI11F 4400' (3758')	DA/MDA(H) Refer to Minimums	Apt Elev 650'	Rwy 642'
MISSED APCH: At RW11 turn RIGHT (MAX 185 KT) on track 204° climbing to ZO NDB. At ZO NDB turn LEFT on track 159° to NI303. Cross NI303, then turn LEFT (MAX 220 KT) to ZO NDB climbing to 4300' and hold. Refer to minimums for missed apch climb gradient.					
Alt Set: hPa		Rwy Elev: 23 hPa	Trans level: By ATC		Trans alt: 10000'
RNP Apch	Baro-VNAV not authorized below -15°C.				



Dist to RW11	10.0	9.0	8.0	7.0	6.0	5.0	4.0	3.0	2.0	1.0
ALTITUDE	4400'	4040'	3670'	3290'	2920'	2550'	2180'	1810'	1440'	1065'



Gnd speed-Kts	70	90	100	120	140	160	HIALS PAPI	185 KT MAX RT	ZO ↑ on 204°
Descent Angle	3.50°	434	557	619	743	867			
MAP at RW11 Timing not authorized for defining the MAP.									

PANS OPS	Std/State STRAIGHT-IN LANDING						CIRCLE-TO-LAND	
	LNAV/VNAV		LNAV		LNAV		Not authorized Northeast of airport between 297° and 100°	
	DA(H) 1200' (558')		Missed apch climb gradient mim 3.0% DA/CDFA MDA(H) 1080' (438')		Missed apch climb gradient mim 2.5% DA/CDFA MDA(H) 1200' (558')		Max Kts	MDA(H)
A	ALS out		ALS out		ALS out		100	1280' (630') V1500m
B	R1500m		R1500m		R1500m		135	1570' (920') V1600m
C	R2100m	R2400m	R1600m	R2000m	R2100m	R2400m	180	1870' (1220') V2400m
D							205	2130' (1480') V3600m

LYNI/INI KONSTANTIN VELIKI

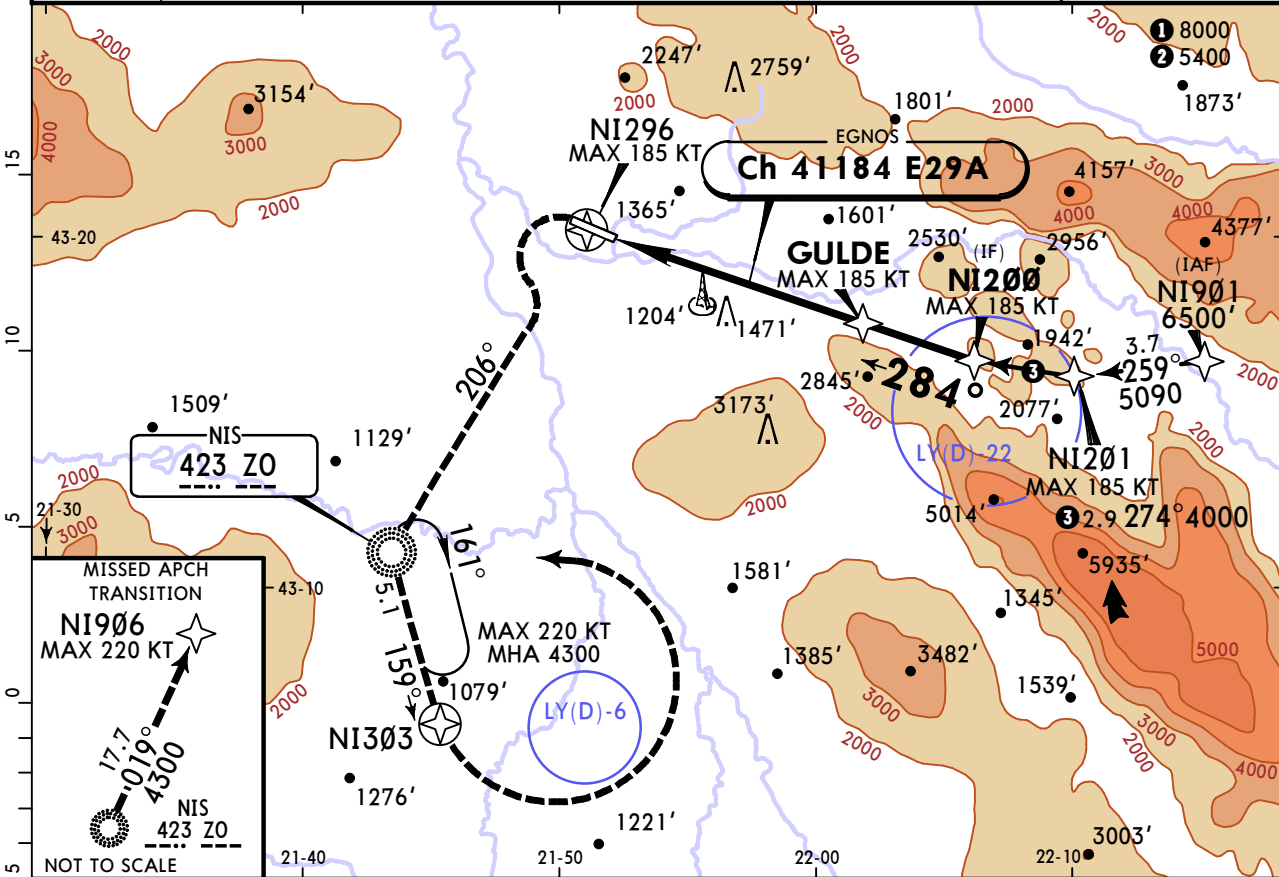
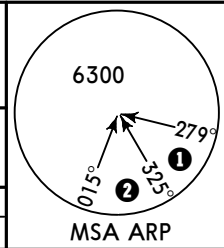


22 OCT 21 (12-2) **Eff 4 Nov**

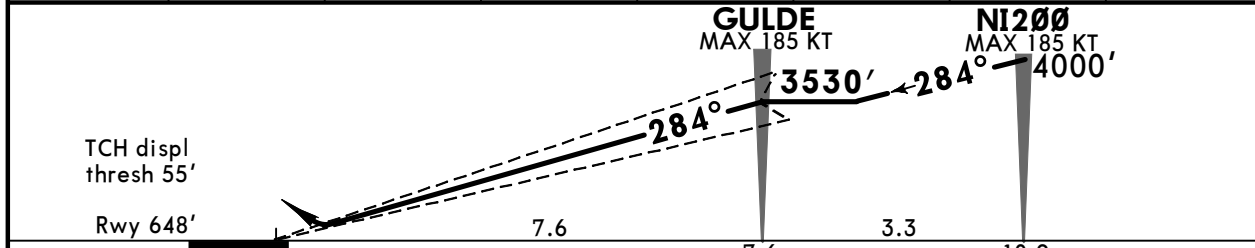
NIS, SERBIA

RNP Z Rwy 29 (LPV)

NIS Approach				NIS Tower	
119.525				118.950	
EGNOS Ch 41184 E29A	Final Apch Crs 284°	GULDE 3530' (2882')	DA(H) Refer to Minimums	Apt Elev 650'	Rwy 648'
MISSED APCH: Climb STRAIGHT AHEAD. At NI296 turn LEFT (MAX 185 KT) on track 206° climbing to ZO NDB. At ZO NDB turn LEFT on track 159° to NI303. Cross NI303 then turn LEFT (MAX 220 KT) to ZO NDB climbing to 4300' and hold.					
Alt Set: hPa		Rwy Elev: 24 hPa	Trans level: By ATC		Trans alt: 10000'
RNP Apch	Final approach track offset 5°.				



DIST to THR29	1.0	2.0	3.0	4.0	5.0	6.0	7.0
ALTITUDE	1080'	1450'	1820'	2190'	2570'	2940'	3310'



Gnd speed-Kts	70	90	100	120	140	160	HIALS PAPI NI296 185 KT ZO 423 on 206°
Glide Path Angle	3.50°	434	557	619	743	867	

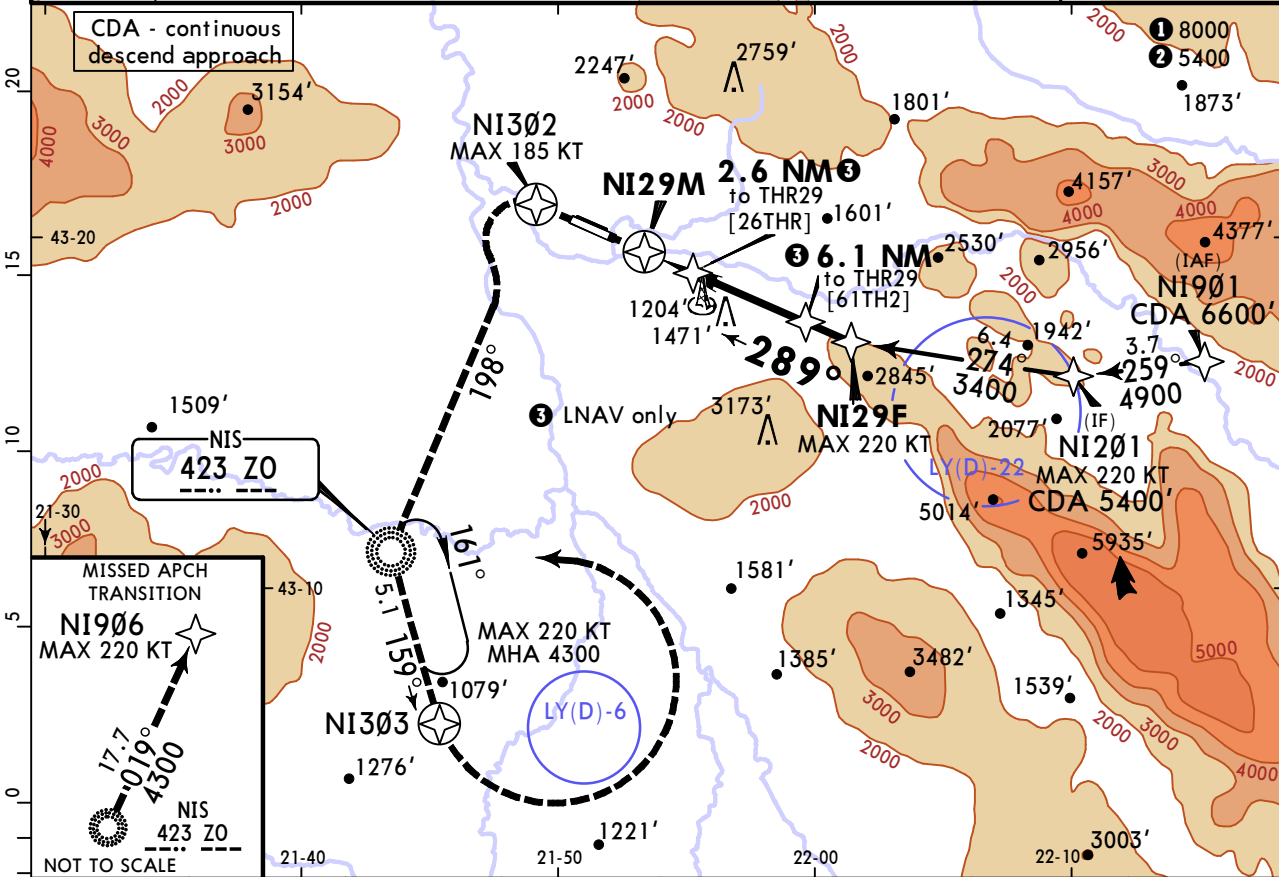
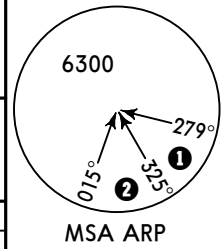
PANS OPS	Std/State		STRAIGHT-IN LANDING		CIRCLE-TO-LAND	
	LPV CAT I				Not authorized Northeast of airport between 297° to 100°	
	DA(H)				Max Kts	
	A: 986' (338') B: 999' (351') C: 1012' (364') D: 1022' (374')				MDA(H)	
	ALS out		ALS out		ALS out	
A	R1100m	R1500m		100	1280' (630') V1500m	
B	R1200m	R1500m		135	1570' (920') V1600m	
C	R1300m	R1700m		180	1870' (1220') V2400m	
D	R1300m	R1700m		205	2130' (1480') V3600m	

LYNI/INI
KONSTANTIN VELIKI

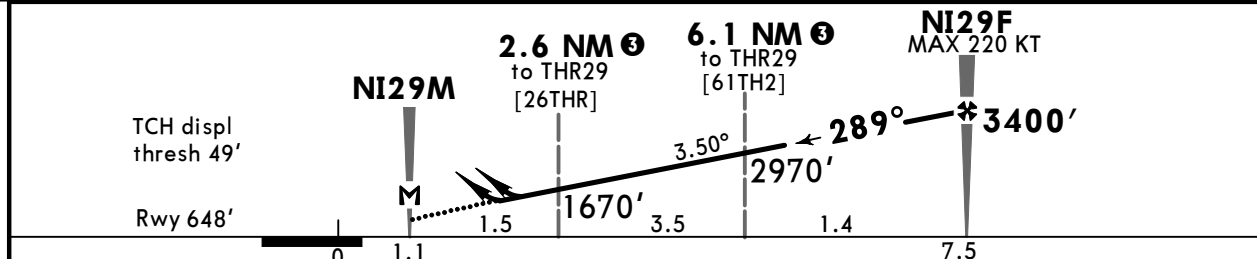
JEPPESEN
22 OCT 21 (12-3) Eff 4 Nov

NIS, SERBIA
RNP Y Rwy 29

NIS Approach 119.525			NIS Tower 118.950		
RNAV	Final Apch Crs 289°	NI29F 3400' (2752')	LNAV/VNAV DA(H) Refer to Minimums	Apt Elev 650'	Rwy 648'
MISSED APCH: Climb STRAIGHT AHEAD. At NI302 turn LEFT (MAX 185 KT) on track 198° climbing to ZO NDB. At ZO NDB turn LEFT on track 159° to NI303. Cross NI303, then turn LEFT (MAX 220 KT) to ZO NDB climbing to 4300' and hold. Refer to minimums for missed apch climb gradient.					
Alt Set: hPa		Rwy Elev: 24 hPa	Trans level: By ATC		Trans alt: 10000'
RNP Apch			Baro-VNAV not authorized below -15°C.		



Dist to THR 29	2.0	3.0	4.0	5.0	6.0	7.0	8.0
ALTITUDE	1450'	1820'	2190'	2560'	2930'	3310'	3680'



Gnd speed-Kts	70	90	100	120	140	160
Descent Angle	3.50°	434	557	619	743	867
MAP at NI29M						

Std/State	STRAIGHT-IN LANDING				CIRCLING TO-LAND
	LNAV/VNAV		LNAV		
	Missed apch climb gradient mim 4.0%		Missed apch climb gradient mim 2.5%		Not authorized Northeast of airport between 297° and 100°
	DA(H)	ALS out	DA(H)	ALS out	
A	1000' (352')	R1200m	1020' (372')	R1300m	100 Kts
B	1010' (362')	R1300m	1030' (382')	R1400m	135
C	1040' (392')	R1400m	1060' (412')	R1500m	180
D	1070' (422')	R1600m	1080' (432')	R2000m	205
					Max Kts
					MDA(H)
					1280' (630') V1500m
					1570' (920') V1600m
					1870' (1220') V2400m
					2130' (1480') V3600m

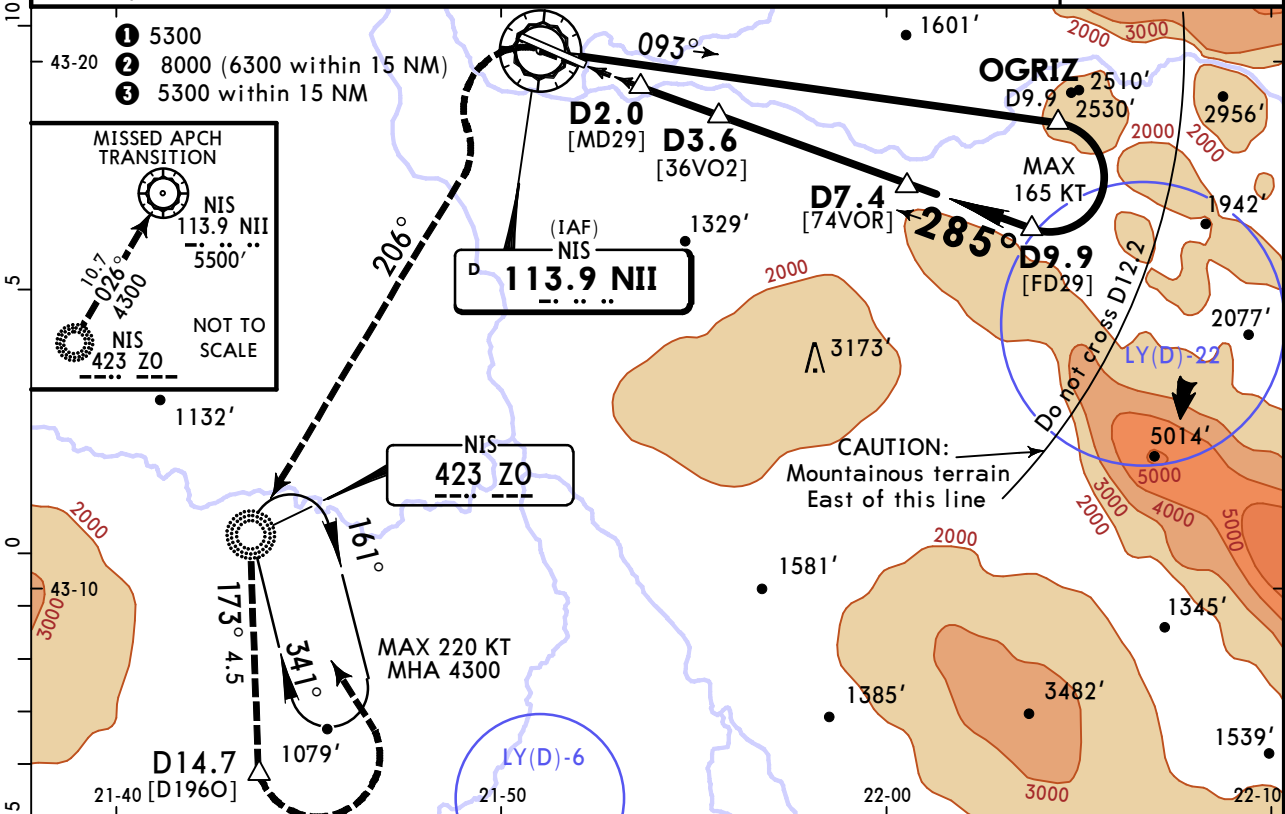
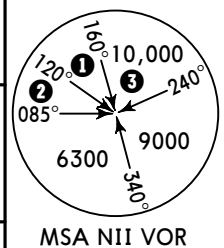
CHANGES: Missed apch text. Circling minimums. New AOM concept. © JEPPESEN, 2018, 2021. ALL RIGHTS RESERVED.

LYNI/INI KONSTANTIN VELIKI

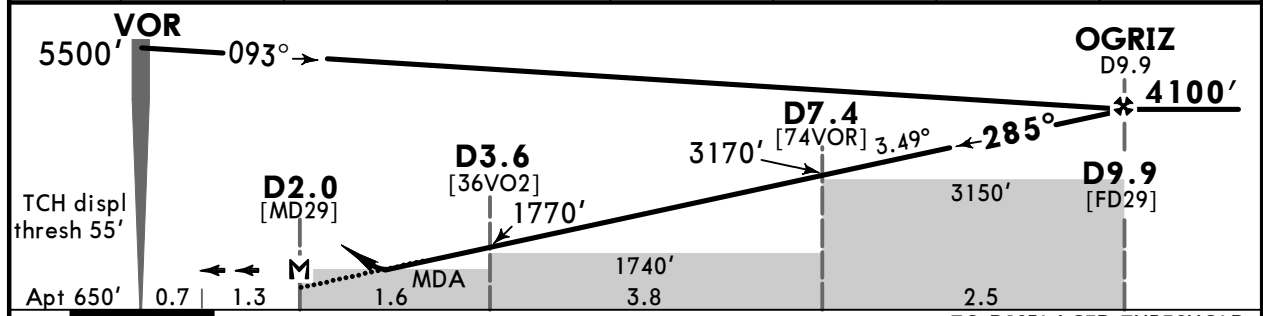
18 FEB 22 **13-2** Eff 24 Feb CAT A, B & C

NIS, SERBIA VOR Rwy 29

NIS Approach 119.525			NIS Tower 118.950		
VOR NII 113.9	Final Apch Crs 285°	D9.9 4100' (3450')	DA/MDA(H) 1230' (580')	Apt Elev 650'	
MISSED APCH: Climb STRAIGHT AHEAD. At VOR turn LEFT (MAX 185 KT) to ZO NDB onto 206°. At ZO NDB turn LEFT onto 173° from ZO NDB. At D14.7 turn LEFT (MAX 220 KT) inbound ZO NDB climbing to 4300' and hold.					
Alt Set: hPa		Apt Elev: 24 hPa	Trans level: By ATC		Trans alt: 10000'
DME required.					



NII DME	3.0	4.0	5.0	6.0	7.0	8.0	9.0
ALTITUDE	1540'	1920'	2290'	2660'	3030'	3400'	3770'



Gnd speed-Kts	70	90	100	120	140	160	HIALS PAPI NII 113.9 MAX 185 KT ZO 423 on 206° LT
Descent Angle	3.49°	432	556	618	741	988	
MAP at D2.0							

Timing not authorized for defining the MAP.

PANS OPS	Std/State		STRAIGHT-IN LANDING		CIRCLE-TO-LAND	
			CDFA		Not authorized	
			DA/MDA(H) 1230' (580')		Northeast of airport	
			ALS out		between 297° and 100°	
	A	R1500m		Max Kts	100	1280' (630')
B			135	1570' (920')	V1600m	
C	R2200m	R2400m	180	1870' (1220')	V2400m	
D	NOT APPLICABLE		D	NOT APPLICABLE		

■ VNAV DA(H) in lieu of MDA(H) depends on operator policy.
 CHANGES: Missed approach. © JEPPESEN, 2014, 2022. ALL RIGHTS RESERVED.

Chart changes since cycle 15-2023

ADD = added chart, REV = revised chart, DEL = deleted chart.

ACT	PROCEDURE IDENT	INDEX	REV DATE	EFF DATE
-----	-----------------	-------	----------	----------

NIS, (KONSTANTIN VELIKI - LYNI)

TERMINAL CHART CHANGE NOTICES

No Chart Change Notices for Airport LYNI