

List of pages in this Trip Kit

Trip Kit Index

Airport Information For LEDA

Terminal Charts For LEDA

Revision Letter For Cycle 24-2019

Change Notices

Notebook

General Information

Location: LLEIDA ESP
ICAO/IATA: LEDA / ILD
Lat/Long: N41° 43.7', E000° 32.1'
Elevation: 1152 ft

Airport Use: Public
Daylight Savings: Observed
UTC Conversion: -1:00 = UTC
Magnetic Variation: 0.0° E

Fuel Types: 100 Octane (LL), Jet A-1
Customs: Yes
Airport Type: IFR
Landing Fee: Yes
Control Tower: Yes
Jet Start Unit: No
LLWS Alert: No
Beacon: No

Sunrise: 0714 Z
Sunset: 1627 Z

Runway Information

Runway: 31
Length x Width: 8202 ft x 200 ft
Surface Type: asphalt
TDZ-Elev: 1150 ft
Lighting: Edge, ALS, Centerline, REIL
Displaced Threshold: 295 ft

Runway: 13
Length x Width: 8202 ft x 200 ft
Surface Type: asphalt
TDZ-Elev: 1145 ft
Lighting: Edge, ALS, Centerline

Communication Information

Lleida Tower: 121.325
Lleida Ground: 121.625
Barcelona Approach: 127.700
Cecoa Operations: 131.675

LEDA/ILD ALGUAIRE



LLEIDA, SPAIN

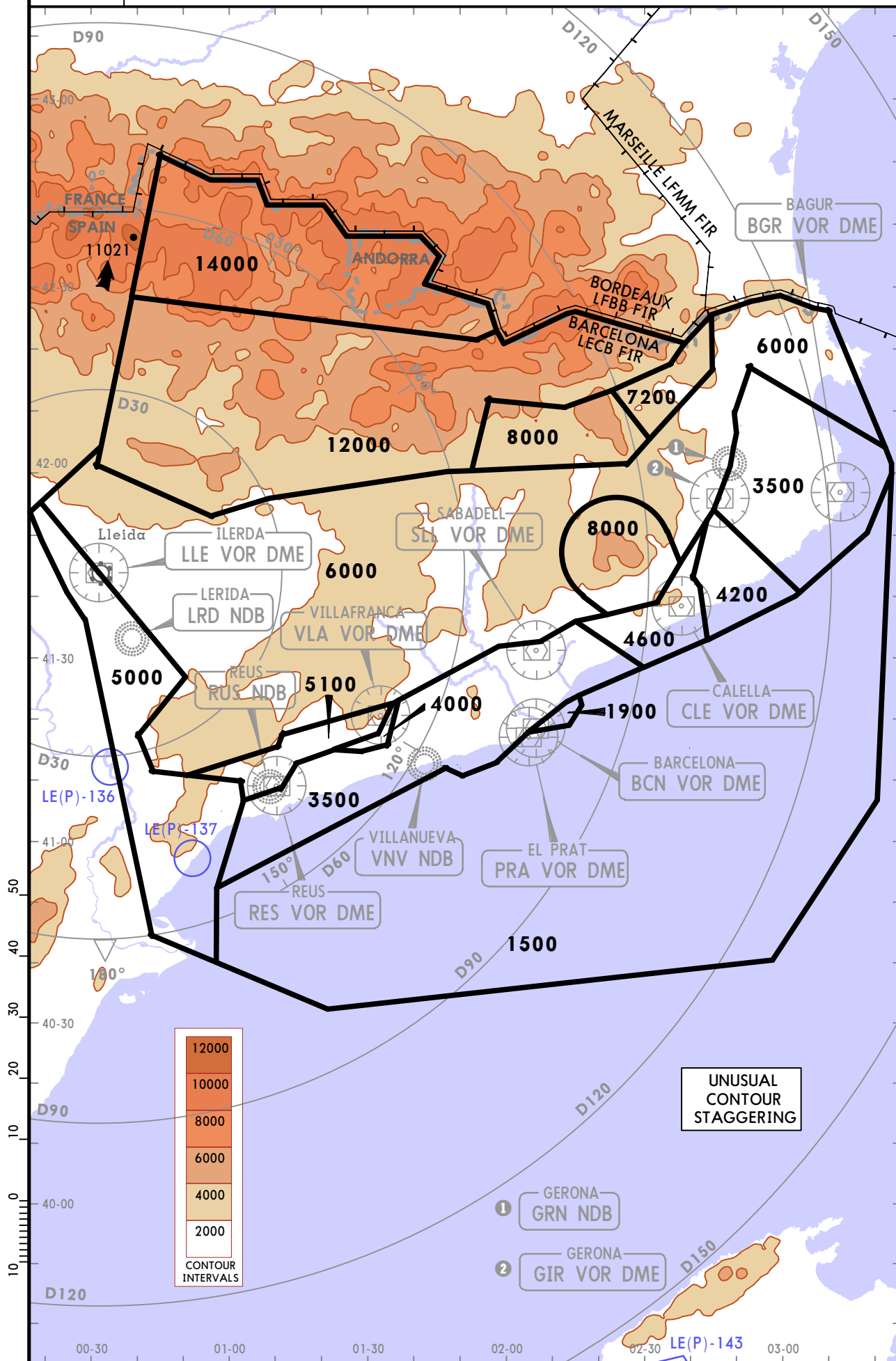
23 NOV 18 (10-1R)

RADAR MINIMUM ALTITUDES

Apt Elev
1152

Alt Set: hPa Trans level: By ATC Trans alt: 6000

1. The published minimum altitudes integrate no correction for low temperatures.
2. This chart may only be used for cross-checking of altitudes assigned while the aircraft is identified.



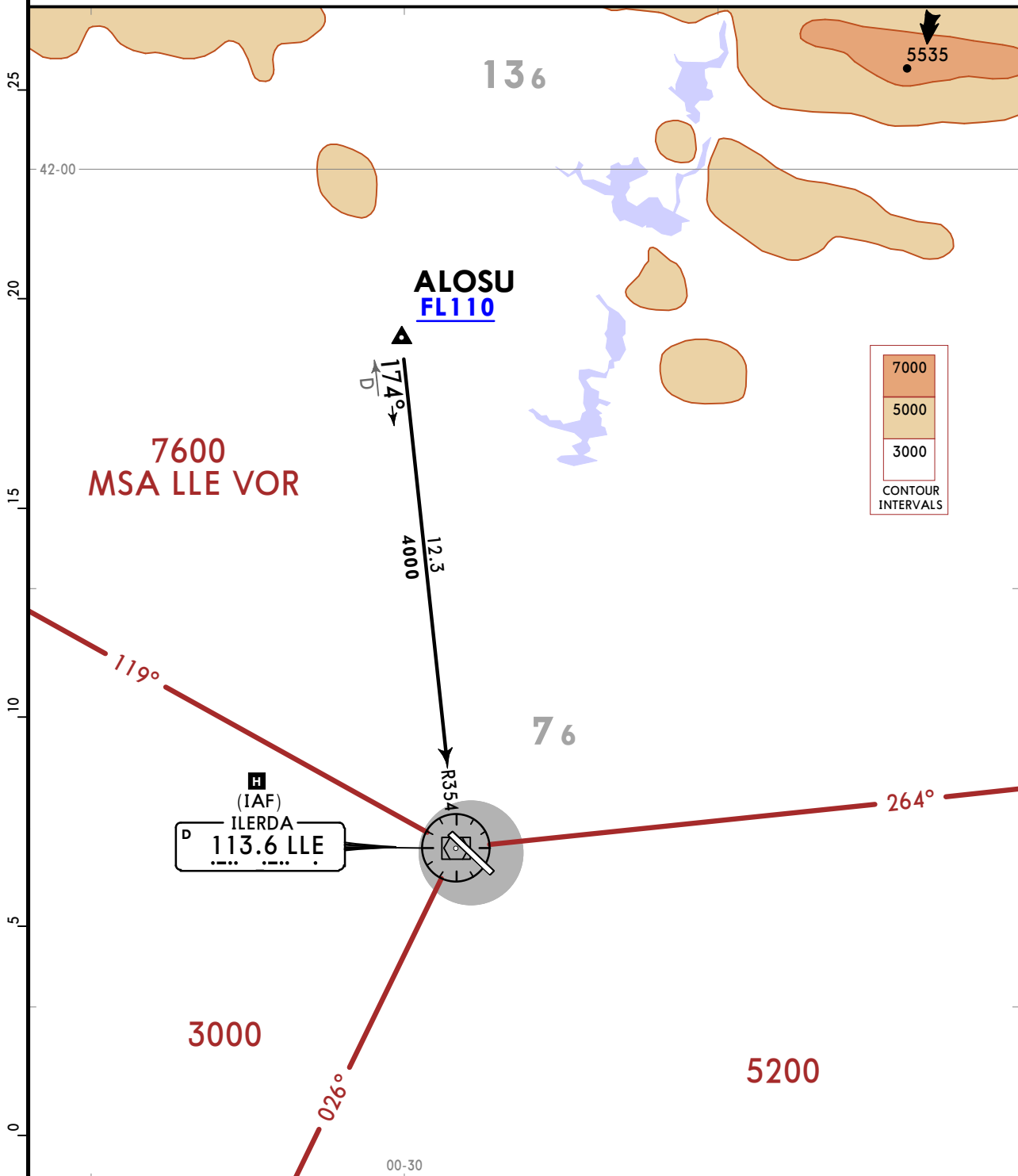
LEDA/ILD
ALGUAIRE

JEPPESEN
25 OCT 19 10-2 Eff 7 Nov

LLEIDA, SPAIN
STAR

Apt Elev 1152
Alt Set: hPa
Trans level: By ATC

ALOSU 2B [ALOS2B]
RWYS 13, 31 ARRIVAL



HOLDINGS OVER LLE

Runway 13	Runway 31	Runway 31
MAX 210 KT MHA 4000	MAX 210 KT MHA 4000	MAX 210 KT MHA 4000



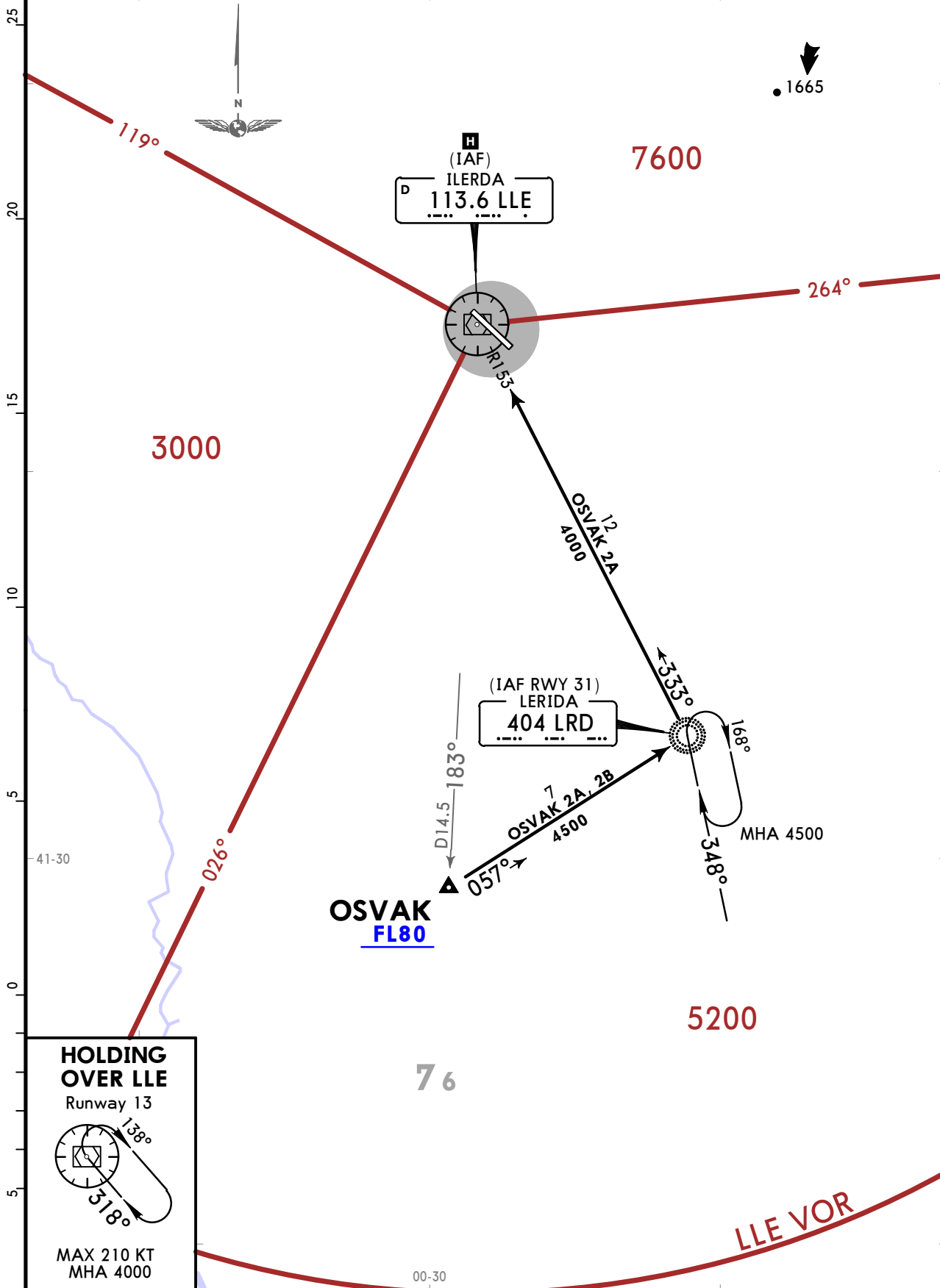
LEDA/ILD
ALGUAIRE

JEPPESEN
25 OCT 19 **10-2A** Eff 7 Nov

LLEIDA, SPAIN
STAR

Apt Elev
1152
Alt Set: hPa
Trans level: By ATC

OSVAK 2A [OSVA2A]
RWY 13 ARRIVAL
OSVAK 2B [OSVA2B]
RWY 31 ARRIVAL



HOLDING OVER LLE
Runway 13

MAX 210 KT
MHA 4000

LEDA/ILD
ALGUAIRE

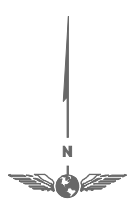
JEPPESEN
25 OCT 19 **(10-2B)** **Eff 7 Nov**

LLEIDA, SPAIN
STAR

Apt Elev 1152
Alt Set: hPa
Trans level: By ATC

REBUL 2B [REBU2B]
RWY 13 ARRIVAL
REBUL 2E [REBU2E]
RWY 31 ARRIVAL

45
40
35
30
25
20
15
10
5
0
5



(IAF)
ILERDA
113.6 LLE



7600

3000

REBUL
FL120

26.4
4000
REBUL 2B

15
5000
REBUL 2E

(IAF)
ROVAP
MHA 5000

120° D15.0

41-30

5200

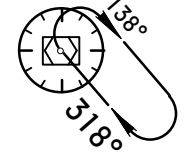
75

76

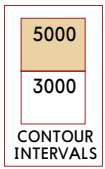
LLE VOR

3946

HOLDING
OVER LLE
Runway 13



MAX 210 KT
MHA 4000



00-30

01-00

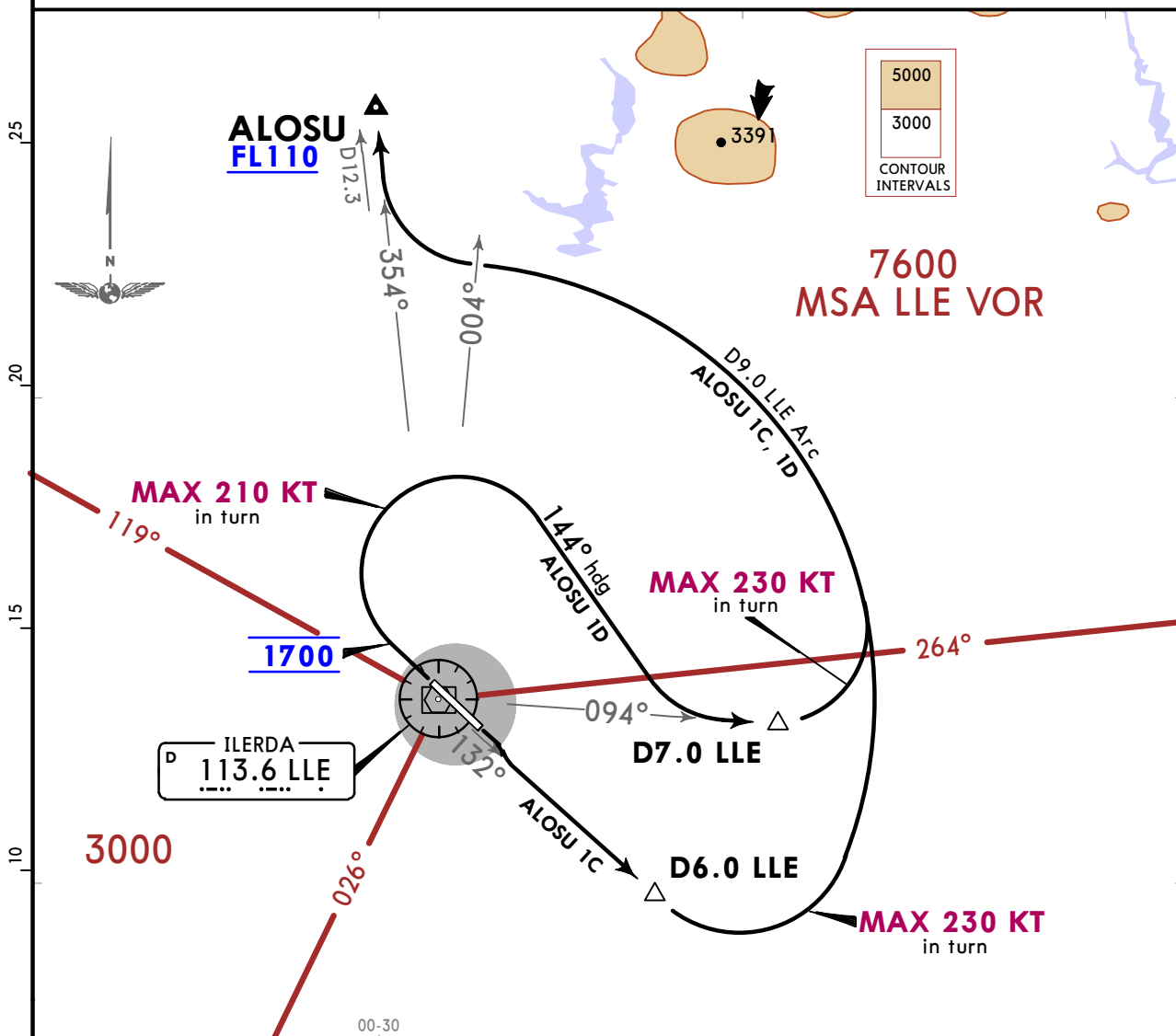
LEDA/ILD
ALGUAIRE

JEPPESSEN
25 OCT 19 **10-3** Eff 7 Nov

LLEIDA, SPAIN
SID

Apt Elev 1152 Trans alt: 6000

ALOSU 1C [ALOS1C], ALOSU 1D [ALOS1D]
DEPARTURES



These SIDs require minimum climb gradients of

ALOSU 1C: 5.7% up to FL110.
ALOSU 1D: 7.0% up to 3000, then 5.0% up to FL110.

Gnd speed-KT	75	100	150	200	250	300
5.0% V/V (fpm)	380	506	760	1013	1266	1519
5.7% V/V (fpm)	433	577	866	1154	1443	1732
7.0% V/V (fpm)	532	709	1063	1418	1772	2127
7.5% V/V (fpm)	570	760	1139	1519	1899	2279

Rwy 31: No turns before DER.

SID	RWY	ROUTING
ALOSU 1C	13	Climb on LLE R132 to D6.0 LLE, turn LEFT, along D9.0 LLE Arc, when crossing LLE R004 turn RIGHT, intercept LLE R354 to ALOSU.
ALOSU 1D	31	Climb on runway heading to 1700, turn RIGHT, 144° heading, intercept LLE R094 to D7.0 LLE, turn LEFT, along D9.0 LLE Arc, when crossing LLE R004 turn RIGHT, intercept LLE R354 to ALOSU.

CONTINGENCY DEPARTURES

In case of one or more navaid failure following procedures shall be carried out:

Rwy 13: Climb on runway heading to 6000, turn by following ATC instructions. This SID requires a minimum climb gradient of 7.5% up to 6000.

Rwy 31: Climb on runway heading to 3500, turn RIGHT (MAX 230 KT), climb on 051° track to 6000, turn by following ATC instructions. This SID requires a minimum climb gradient of 7.5% up to 6000.

LEDA/ILD
ALGUAIRE

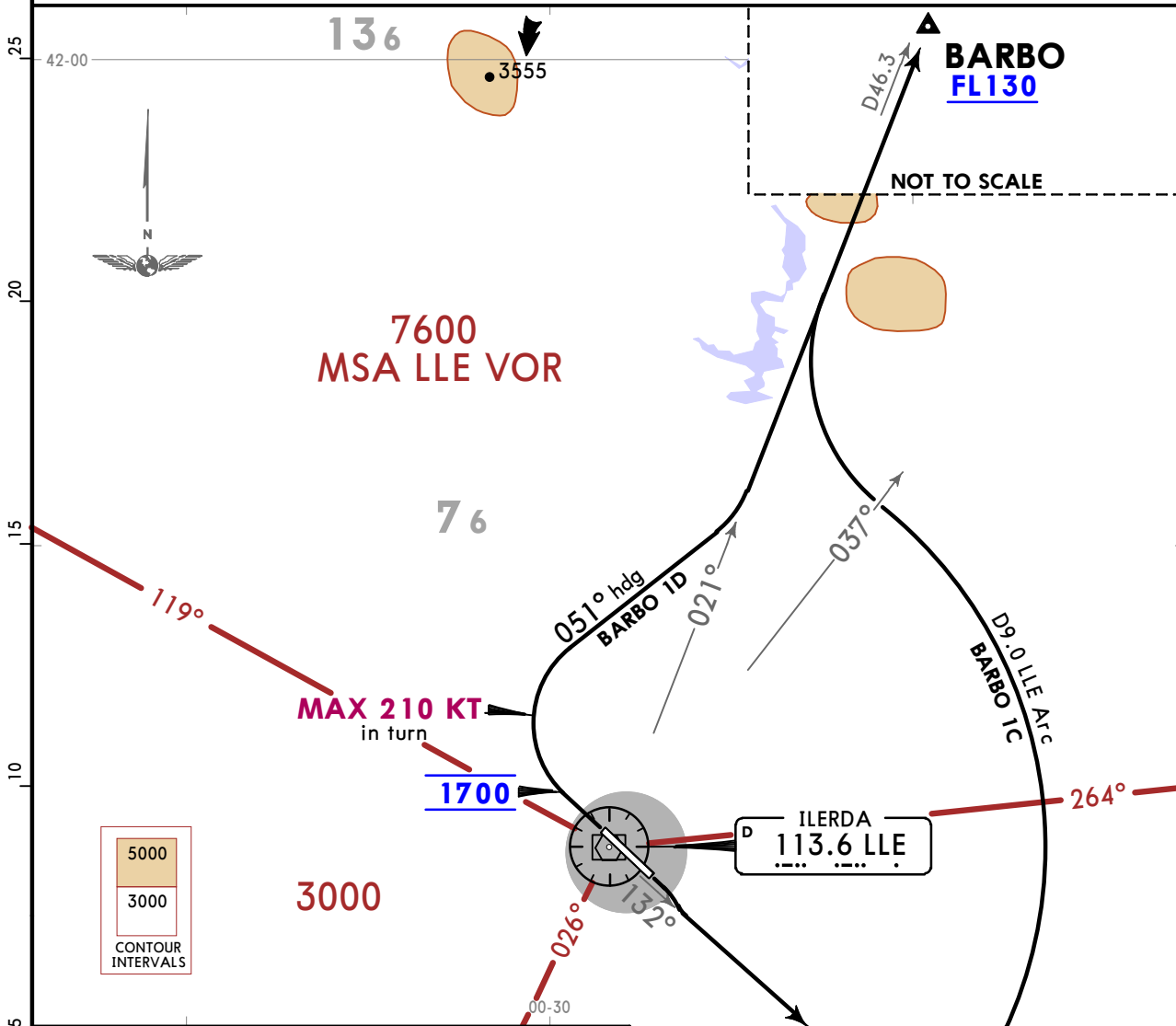
JEPPESEN
25 OCT 19 **10-3A** Eff 7 Nov

LLEIDA, SPAIN
SID

Apt Elev
1152

Trans alt: 6000

BARBO 1C [BARB1C]
BARBO 1D [BARB1D]
DEPARTURES



These SIDs require minimum climb gradients of
BARBO 1C: 4.2% up to 6000.
BARBO 1D: 7.0% up to 7000.

Gnd speed-KT	75	100	150	200	250	300
4.2% V/V (fpm)	319	425	638	851	1063	1276
7.0% V/V (fpm)	532	709	1063	1418	1772	2127
7.5% V/V (fpm)	570	760	1139	1519	1899	2279

Rwy 31: No turns before DER.

SID	RWY	ROUTING
BARBO 1C	13	Climb on LLE R132 to D6.0 LLE, turn LEFT, along D9.0 LLE Arc, when crossing LLE R037 turn RIGHT, intercept LLE R021 to BARBO.
BARBO 1D	31	Climb on runway heading to 1700, turn RIGHT, 051° heading, intercept LLE R021 to BARBO.

CONTINGENCY DEPARTURES

In case of one or more navaid failure following procedures shall be carried out:
Rwy 13: Climb on runway heading to 6000, turn by following ATC instructions. This SID requires a minimum climb gradient of 7.5% up to 6000.
Rwy 31: Climb on runway heading to 3500, turn RIGHT (MAX 230 KT), climb on 051° track to 6000, turn by following ATC instructions. This SID requires a minimum climb gradient of 7.5% up to 6000.

LEDA/ILD
ALGUAIRE

JEPPESSEN

LLEIDA, SPAIN

14 APR 17

10-3B

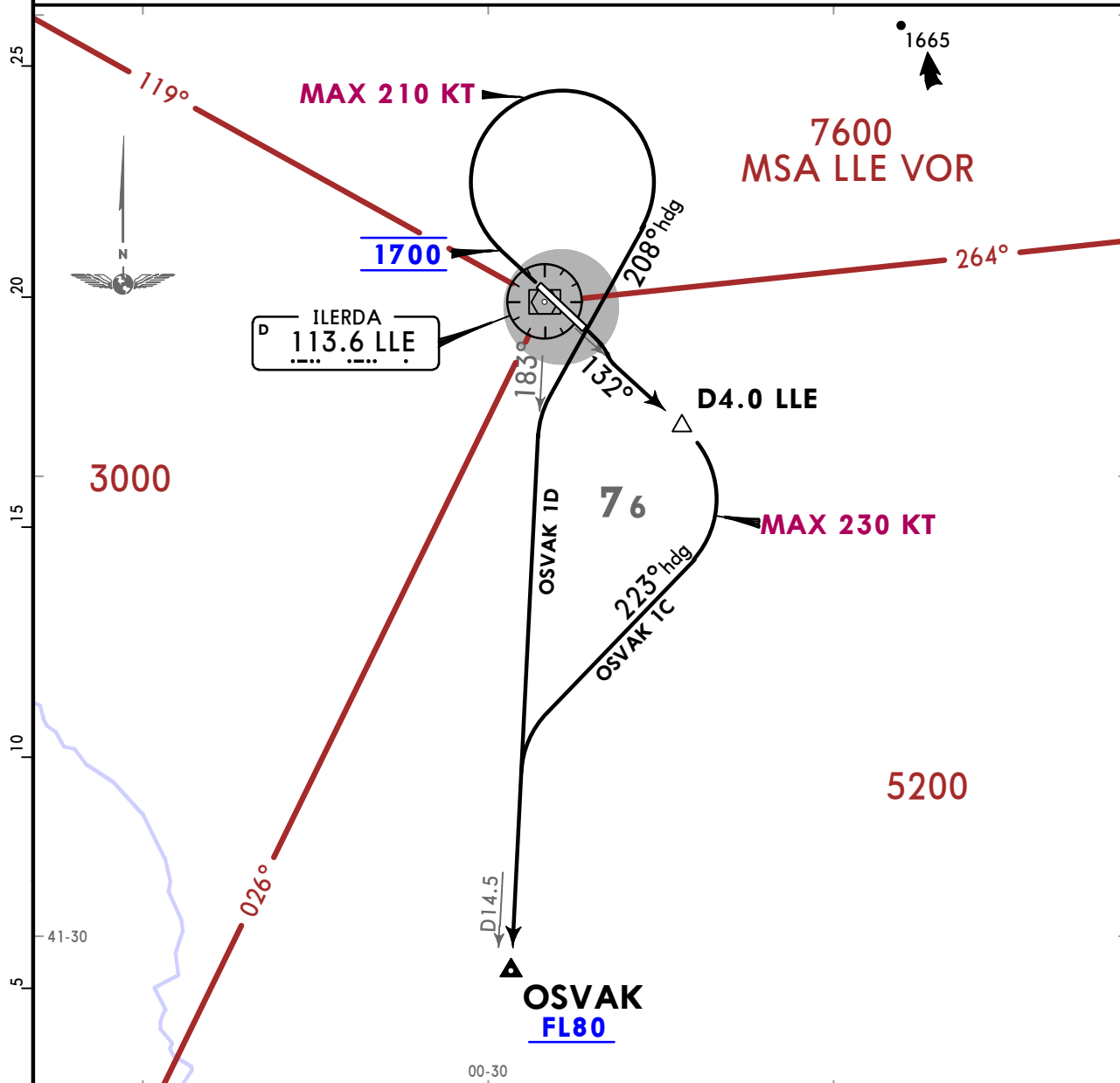
Eff 27 Apr

SID

Apt Elev
1152

Trans alt: 6000

OSVAK 1C [OSVA1C]
OSVAK 1D [OSVA1D]
DEPARTURES



These SIDs require minimum climb gradients of

- OSVAK 1C:** 7.3% up to FL80.
- OSVAK 1D:** 7.0% up to 5000.

Gnd speed-KT	75	100	150	200	250	300
7.0% V/V (fpm)	532	709	1063	1418	1772	2127
7.3% V/V (fpm)	554	739	1109	1479	1848	2218
7.5% V/V (fpm)	570	760	1139	1519	1899	2279

Rwy 31: No turns before DER.

SID	RWY	ROUTING
OSVAK 1C	13	Climb on LLE R132 to D4.0 LLE, turn RIGHT, 223° heading, intercept LLE R183 to OSVAK.
OSVAK 1D	31	Climb on runway heading to 1700, turn RIGHT, 208° heading, intercept LLE R183 to OSVAK.

CONTINGENCY DEPARTURES

In case of one or more navaid failure following procedures shall be carried out:

Rwy 13: Climb on runway heading to 6000, turn by following ATC instructions. This SID requires a minimum climb gradient of 7.5% up to 6000.

Rwy 31: Climb on runway heading to 3500, turn RIGHT (MAX 230 KT), climb on 051° track to 6000, turn by following ATC instructions. This SID requires a minimum climb gradient of 7.5% up to 6000.

LEDA/ILD
ALGUAIRE

JEPPesen

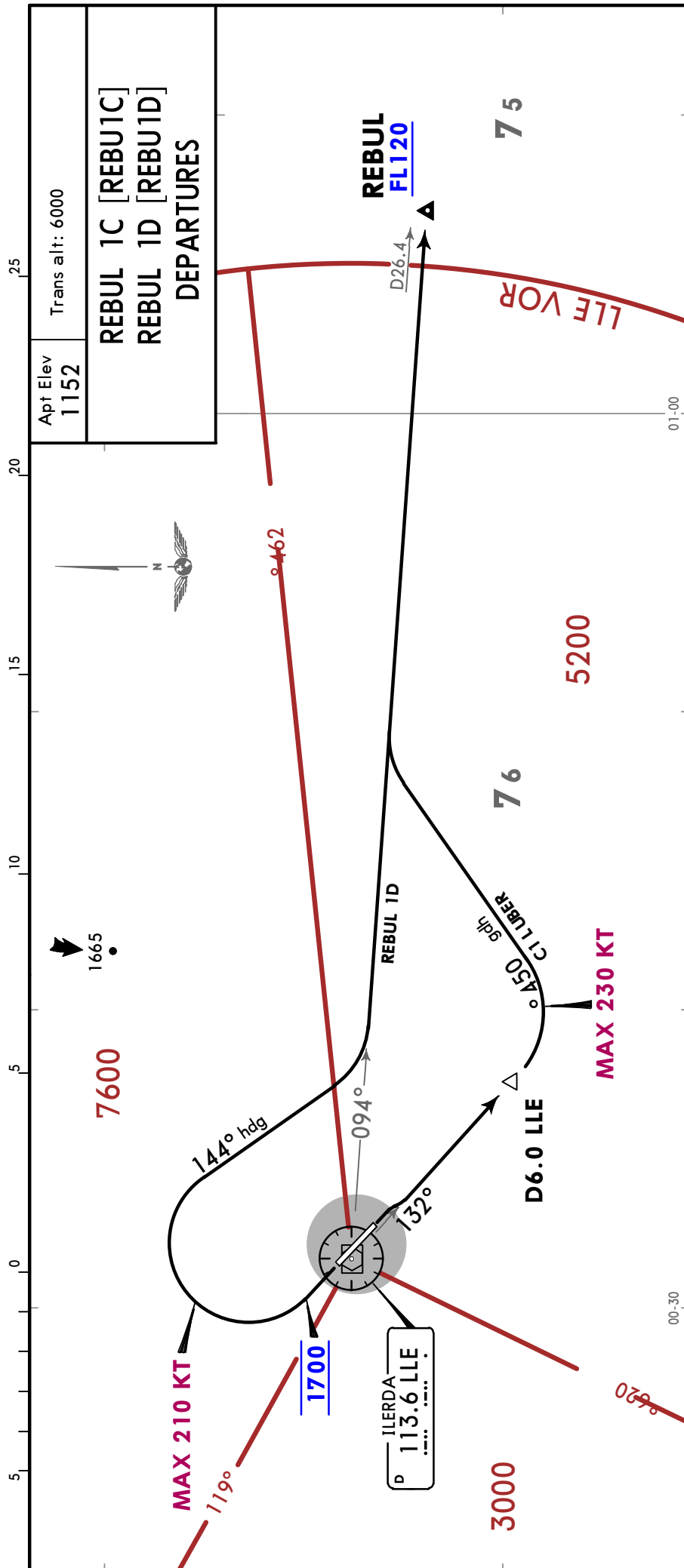
LLEIDA, SPAIN

14 APR 17

10-3C

Eff 27 Apr

SID



Apt Elev
1152

Trans alt: 6000

REBUL 1C [REBU1C]
REBUL 1D [REBU1D]
DEPARTURES

REBUL
FL120

75

76

5200

7600

144° hdg

1700

ILERDA
113.6 LLE

3000

MAX 230 KT

00-30

01-00

Rwy 31: No turns before DER.

ROUTING	
SID	RWY
REBUL 1C	13
REBUL 1D	31

CONTINGENCY DEPARTURES	
In case of one or more novalid failure following procedures shall be carried out:	
Rwy 13:	Climb on runway heading to 6000, turn by following ATC instructions. This SID requires a minimum climb gradient of 7.5% up to 6000.
Rwy 31:	Climb on runway heading to 3500, turn RIGHT (MAX 230 KT), climb on 051° track to 6000, turn by following ATC instructions. This SID requires a minimum climb gradient of 7.5% up to 6000.

These SIDs require minimum climb gradients of

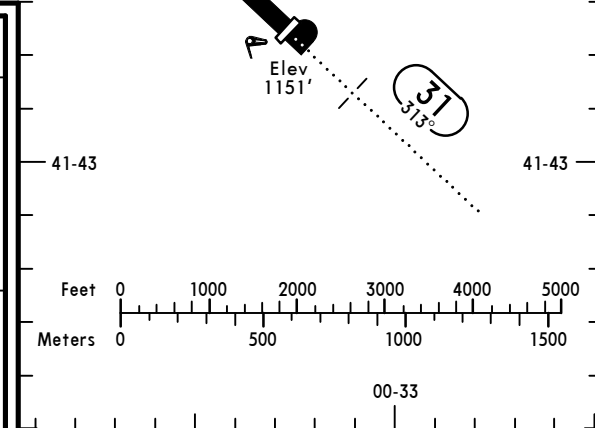
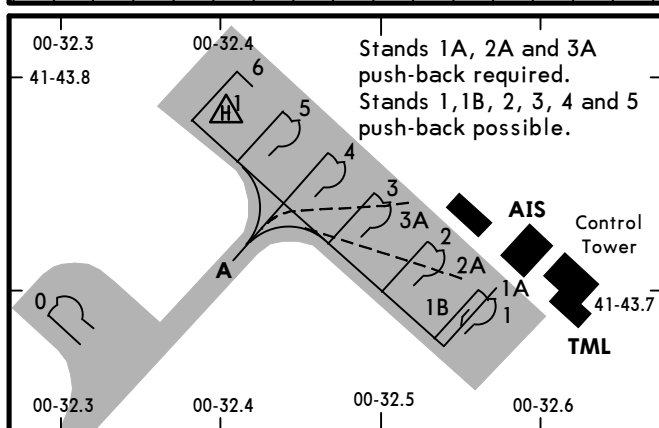
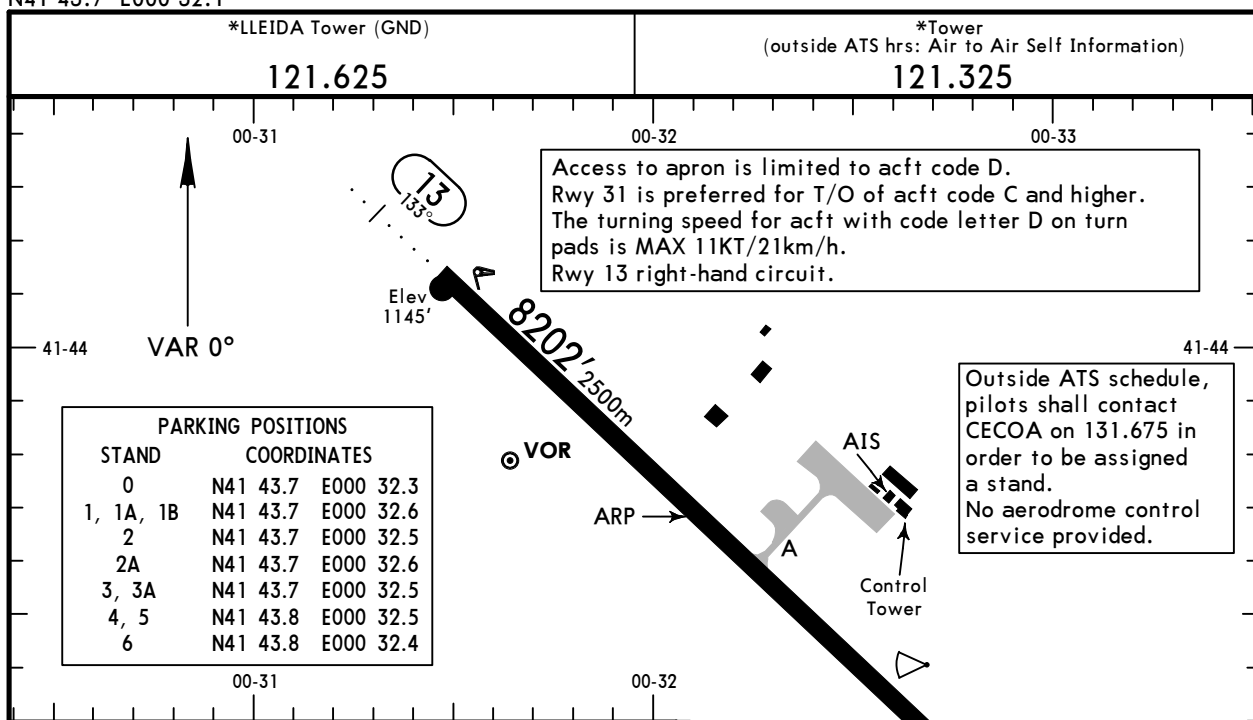
REBUL 1C: 6.9% up to FL120.
REBUL 1D: 7.0% up to 3000, then 5.7% up to FL120.

Gnd speed-KT	75	100	150	200	250	300
5.7% V/V (fpm)	433	577	866	1154	1443	1732
6.9% V/V (fpm)	524	699	1048	1397	1747	2096
7.0% V/V (fpm)	532	709	1063	1418	1772	2127
7.5% V/V (fpm)	570	760	1139	1519	1899	2279

LEDA/ILD
 Apt Elev **1152'**
 N41 43.7 E000 32.1

JEPPesen
 13 APR 18 **(10-9)** Eff 26 Apr

LLEIDA, SPAIN
ALGUAIRE



RWY	ADDITIONAL RUNWAY INFORMATION				USABLE LENGTHS			WIDTH
					LANDING BEYOND		TAKE-OFF	
	HIRL (50m)	CL (30m)	ALS PAPI (3.0°)		Threshold	Glide Slope		
13	HIRL (50m)	CL (30m)	ALS PAPI (3.0°)					200'
31	HIRL (50m)	CL (30m)	HIALS REIL PAPI (3.0°)	RVR	7907' 2410m	6874' 2095m		61m

Standard		TAKE-OFF
A		
B		
C		RVR 550m VIS 800m
D		

STANDSTILL OF OPERATIONS IN THE MOVEMENT AREA PROCEDURE (PPOAM)

Phase I (Warning): When RVR equal to or less than 800m and VIS equal to or less than 1200m.

Phase II: When RVR less than 550m and VIS less than 800m, standstill of operations.

Phase III: When RVR equal to or more than 550m and VIS equal to or more than 800m, and there is a firm improvement, resumption of operations.

UNCERTAINTY ABOUT POSITION IN THE MANOEUVRING AREA

When in doubt about the position of the ACFT relative to the manoeuvring area:

- if it is recognised that the ACFT is not on a RWY, immediately stop the ACFT and report this circumstance to ATC (including the last known position).
- if it is recognised that the ACFT is on a RWY, immediately report to ATC (including the last known position), vacate the RWY, as soon as possible, if a proper nearby TWY can be located, unless ATC indicates otherwise; and then stop the ACFT.

FAILURE OF AN ACFT

Pilot shall notify the situation to ATC and wait for the arrival of assistance. If the ACFT is on a RWY, if possible and unless ATC indicates otherwise, pilot shall vacate the RWY.

LOSS OF VISUAL CONTACT BETWEEN TRAFFICS

If visual contact is lost with another ACFT or a vehicle with which own separation is maintained, immediately inform ATC and stop the ACFT.

COMMUNICATION FAILURE

Arriving ACFT: if the ACFT has just landed, it shall hold in the first segment of the TWY which leaves the ILS sensitive area free and await for the arrival of an assistance vehicle.

Departing ACFT: ACFT shall continue with the designated route and stop at the limit of ATC clearance, taking extreme caution, it shall hold and wait for the arrival of an assistance vehicle.

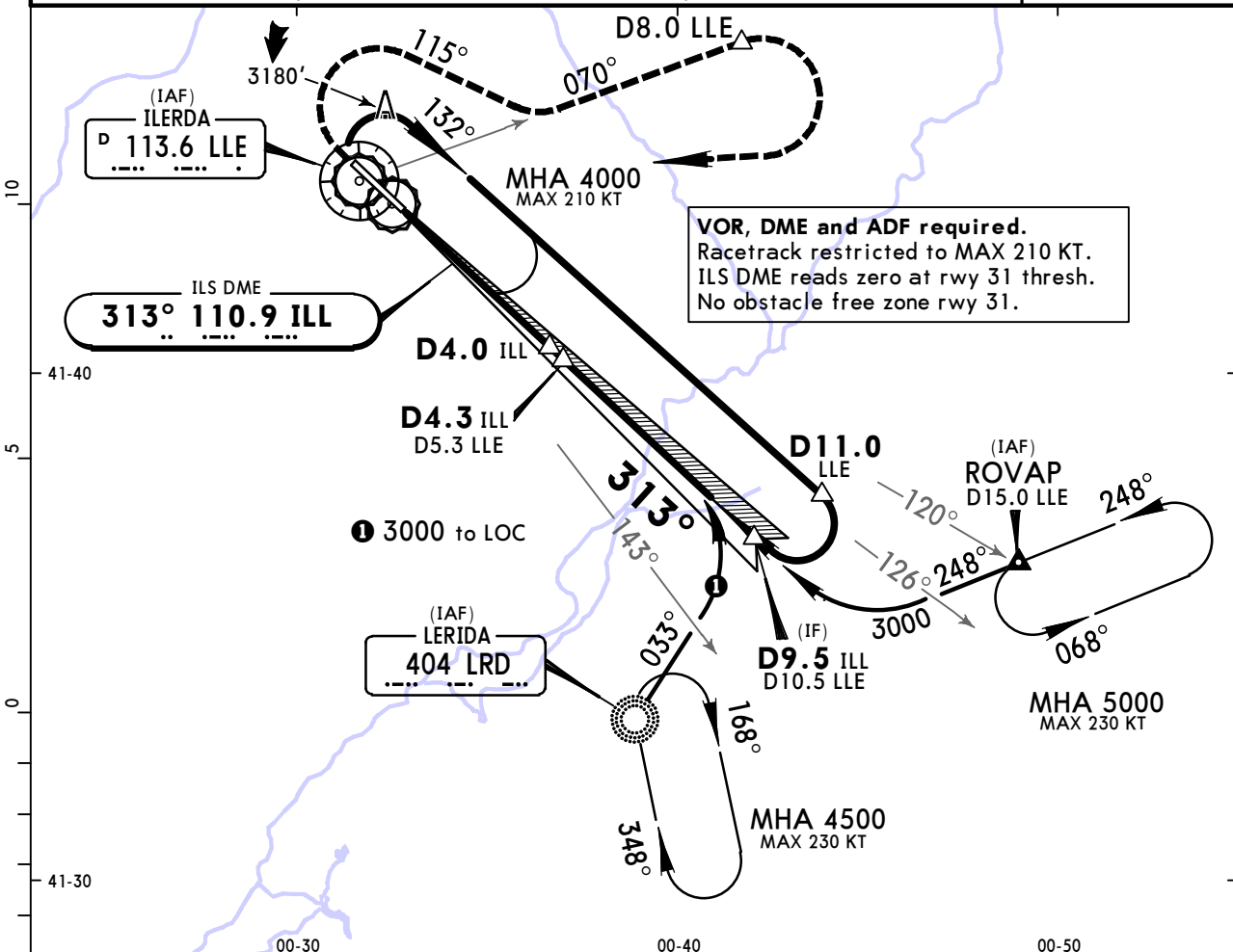
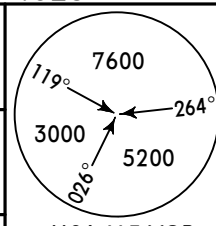
If the ACFT already has ATC taxiing clearance, it shall continue with the designated route and stop at the limit of clearance, taking extreme caution, it will hold and wait for the arrival of an assistance vehicle.

LEDA/ILD ALGUAIRE

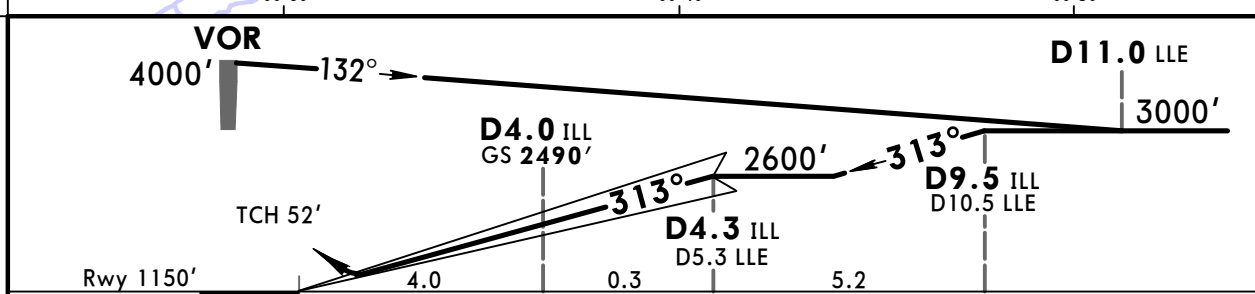
JEPPESEN
22 SEP 17 **(11-1)**

LLEIDA, SPAIN ILS Rwy 31

*BARCELONA Approach 127.7		*LLEIDA Tower (outside ATS hrs: Air to Air Self Information) 121.325		*Ground 121.625	
LOC ILL 110.9	Final Apch Crs 313°	GS D4.0 ILL 2490' (1340')	ILS DA(H) Refer to Minimums	Apt Elev 1152' Rwy 1150'	
MISSED APCH: Climb on rwy hdg to 1600', turn RIGHT (MAX 185 KT) onto 115° to intercept and follow R-070 LLE to D8.0 LLE. Turn RIGHT to VOR and join holding at 4000'.					
Alt Set: hPa		Rwy Elev: 41 hPa	Trans level: By ATC		Trans alt: 6000'



VOR, DME and ADF required.
Racetrack restricted to MAX 210 KT.
ILS DME reads zero at rwy 31 thresh.
No obstacle free zone rwy 31.



Gnd speed-Kts	70	90	100	120	140	160	HIALS REIL PAPI	1600'	Rwy on hdg	185 KT MAX RT	115°
GS	3.00°	372	478	531	637	849					

Standard		STRAIGHT-IN LANDING RWY 31		CIRCLE-TO-LAND	
DA(H) ABC: 1350' (200') D: 1352' (202')		FULL		ALS out	
A	RVR 550m I		RVR 1200m		Max Kts
B					100
C					135
D					180
				205	
				MDA(H)	
				VIS	
				1650' (498')	
				1660' (508')	
				1840' (688')	
				1860' (708')	

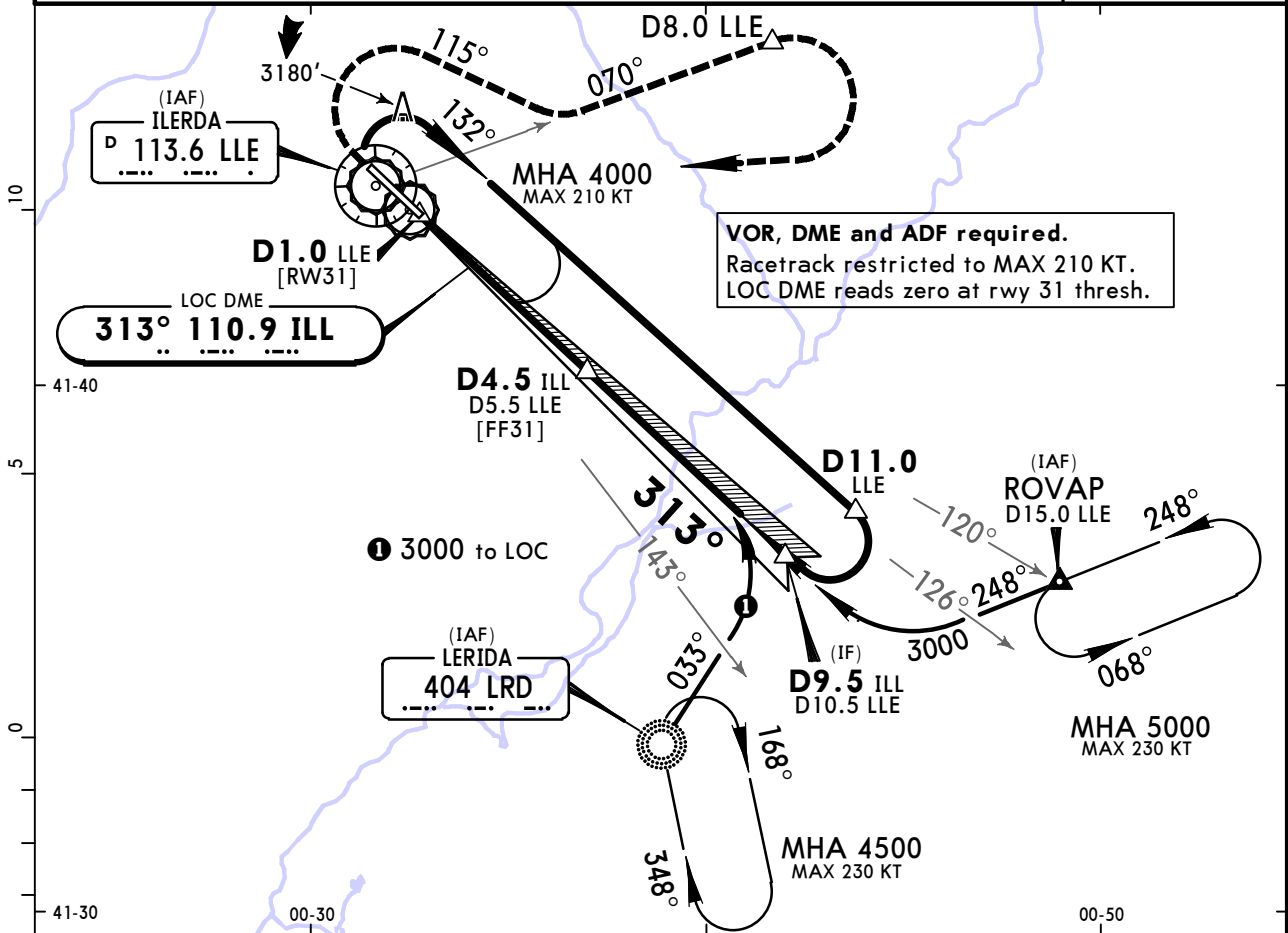
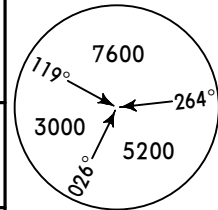
I W/o HUD/AP/FD: RVR 750m

LEDA/ILD ALGUAIRE

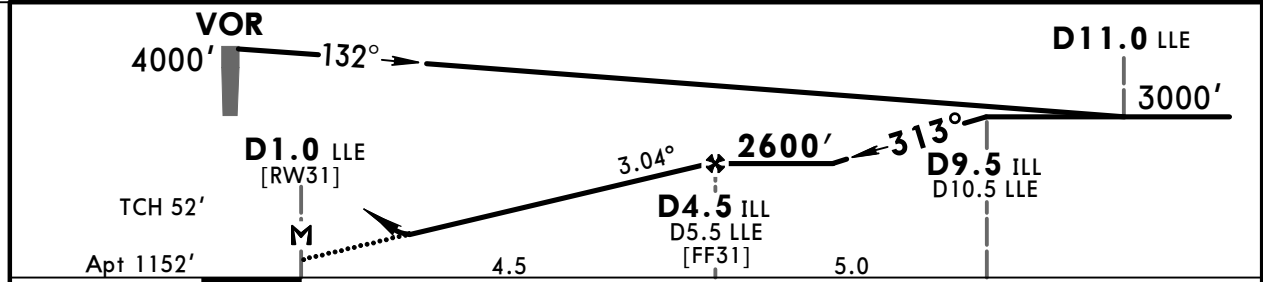
JEPPESEN
22 SEP 17 **(11-2)**

LLEIDA, SPAIN LOC Rwy 31

*BARCELONA Approach 127.7		*LLEIDA Tower (outside ATS hrs: Air to Air Self Information) 121.325		*Ground 121.625	
LOC ILL 110.9	Final Apch Crs 313°	Minimum Alt D4.5 ILL 2600' (1448')	DA/MDA(H) 1600' (448')	Apt Elev 1152'	
MISSED APCH: Turn RIGHT (MAX 185 KT) onto 115° to intercept and follow R-070 LLE to D8.0 LLE. Turn RIGHT to VOR and join holding at 4000'.					
Alt Set: hPa		Apt Elev: 41 hPa		Trans level: By ATC	
				Trans alt: 6000'	
					MSA LLE VOR



ILL DME	2.0	3.0	4.0
ALTITUDE	1850'	2170'	2490'



Gnd speed-Kts	70	90	100	120	140	160	HIALS REIL PAPI PAPI	185 KT MAX RT	115° ↑
Descent Angle	3.04°	376	484	538	645	861			
MAP at D1.0 LLE									

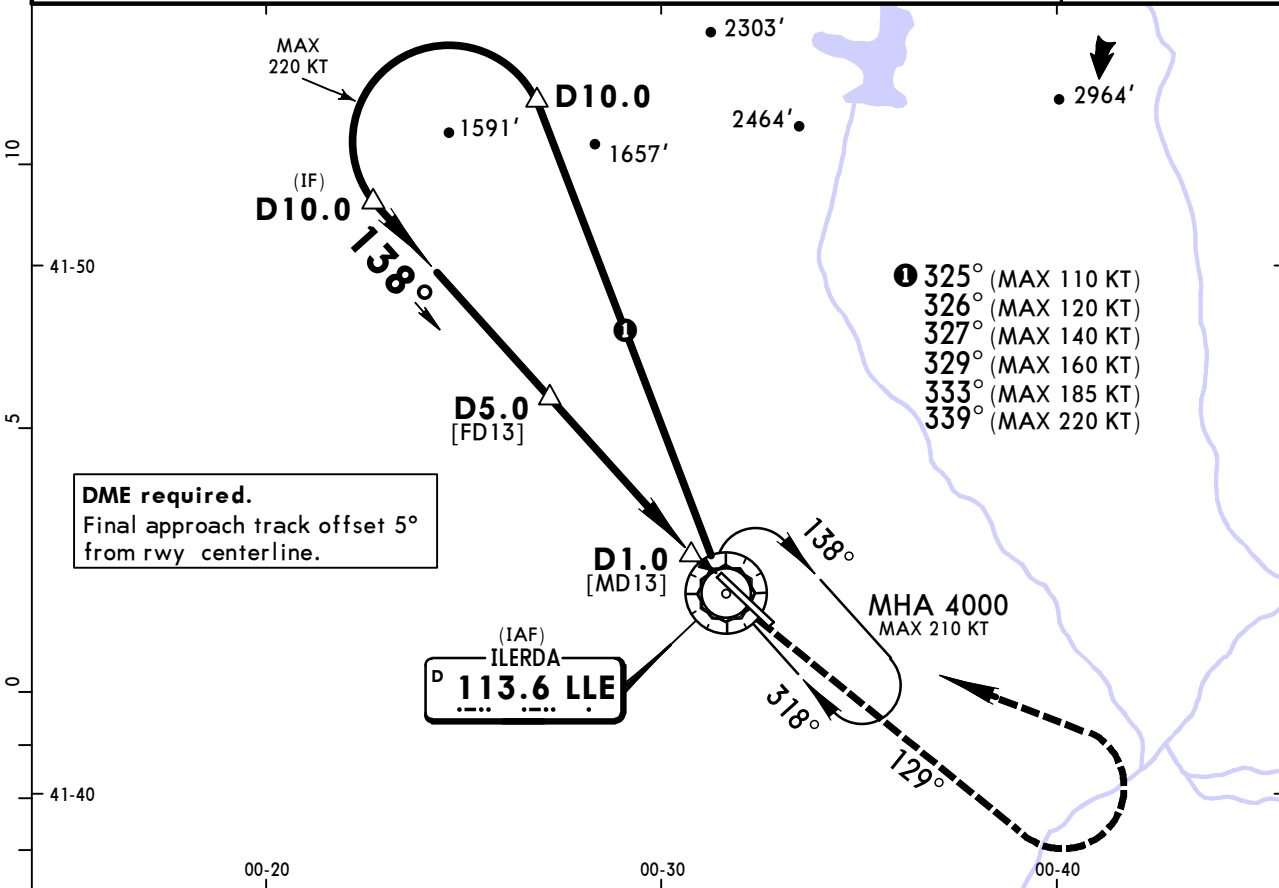
Standard						STRAIGHT-IN LANDING RWY 31				CIRCLE-TO-LAND							
CDFA										DA/MDA(H) 1600' (448')							
						ALS out				Max Kts		MDA(H)		VIS			
A							RVR 1500m				100	1650' (498')		1500m			
B							RVR 1400m				135	1660' (508')		1600m			
C							RVR 2100m				180	1840' (688')		2400m			
D							RVR 2100m				205	1860' (708')		3600m			

LEDA/ILD ALGUAIRE

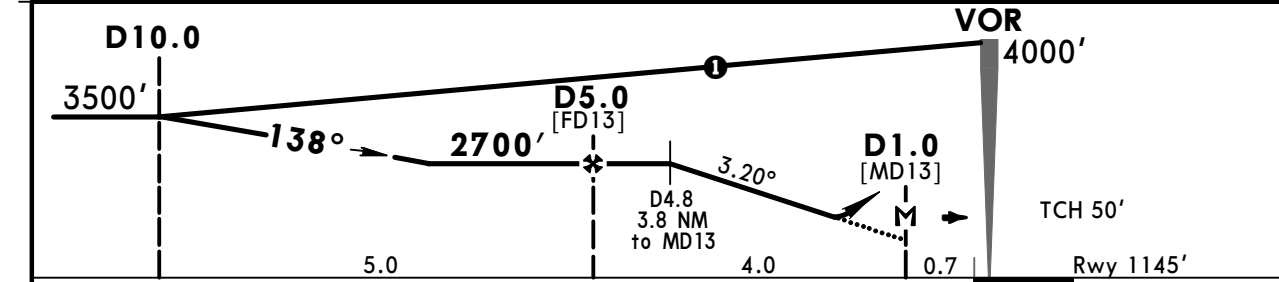
JEPPESEN
11 SEP 15 **(13-1)** Eff 17 Sep

LLEIDA, SPAIN VOR Rwy 13

*BARCELONA Approach		*LLEIDA Tower			*Ground
127.7		121.325			121.625
VOR LLE 113.6	Final Apch Crs 138°	Minimum Alt D5.0 2700' (1555')	DA(H) 1510' (365')	Apt Elev 1152' Rwy 1145'	
MISSED APCH: Climb on rwy heading to intercept and follow R-129 climbing to 3500'. Turn LEFT to VOR climbing to 4000' and join holding.					
Alt Set: hPa	Rwy Elev: 41 hPa	Trans level: By ATC	Trans alt: 6000'	MSA LLE VOR	



LLE DME	4.8	4.0	3.0	2.0
ALTITUDE	2700'	2420'	2090'	1750'



Gnd speed-Kts	70	90	100	120	140	160	ALS REIL PAPI	Rwy hdg ↑ to intercept 113.6 R-129	LLE 3500'
Descent Angle 3.20°	396	510	566	679	793	906			
MAP at D1.0									

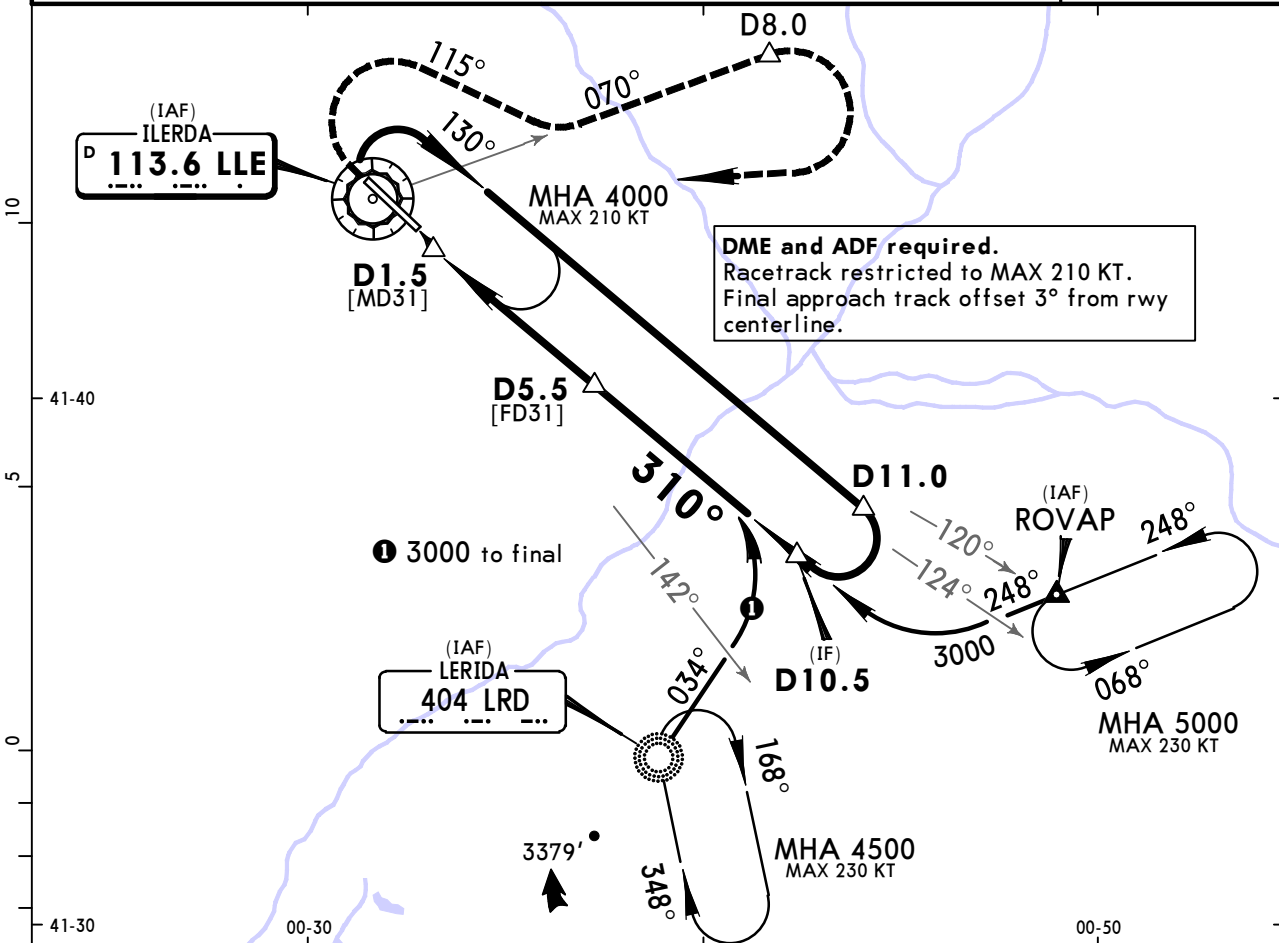
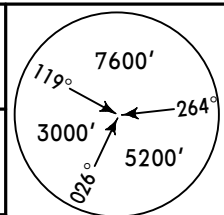
PANS OPS	Standard		STRAIGHT-IN LANDING RWY 13		CIRCLE-TO-LAND	
	DA(H) 1510' (365')		ALS out		Max Kts	MDA(H) VIS
	A	RVR 1500m	RVR 1500m		100	1650' (498') 1500m
	B		RVR 1700m		135	1660' (508') 1600m
	C	RVR 1500m		RVR 1700m		180
D	RVR 1500m		RVR 1700m		205	1860' (708') 3600m

LEDA/ILD ALGUAIRE

JEPPESEN
11 SEP 15 **(13-2)** Eff 17 Sep

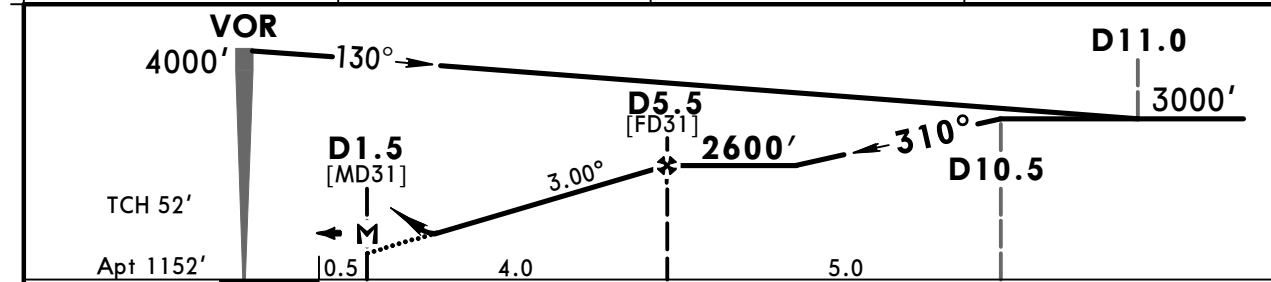
LLEIDA, SPAIN VOR Rwy 31

*BARCELONA Approach 127.7		*LLEIDA Tower 121.325		*Ground 121.625	
VOR LLE 113.6	Final Apch Crs 310°	Minimum Alt D5.5 2600' (1448')	DA(H) 1600' (448')	Apt Elev 1152'	
MISSED APCH: Climb to VOR, then turn RIGHT (MAX 185 KT) onto 115° to intercept and follow R-070 to D8.0. Turn RIGHT to VOR and join holding at or above 4000'.					
Alt Set: hPa		Apt Elev: 41 hPa		Trans level: By ATC	
				Trans alt: 6000'	
					MSA LLE VOR



DME and ADF required.
Racetrack restricted to MAX 210 KT.
Final approach track offset 3° from rwy centerline.

LLE DME	3.0	4.0	5.0
ALTITUDE	1850'	2170'	2490'



Gnd speed-Kts	70	90	100	120	140	160	HIALS	LLE	185 KT	115°
Descent Angle 3.00°	372	478	531	637	743	849	REIL	113.6	MAX	
							PAPI			
MAP at D1.5										

Standard			STRAIGHT-IN LANDING RWY 31			CIRCLE-TO-LAND			
DA(H) 1600' (448')			ALS out			Max Kts			
A	RVR 1400m	RVR 1500m			100	MDA(H)	VIS		
B		RVR 1500m			135	1650' (498')	1500m		
C		CMV 2100m			180	1660' (508')	1600m		
D		CMV 2100m			205	1840' (688')	2400m		
								1860' (708')	3600m

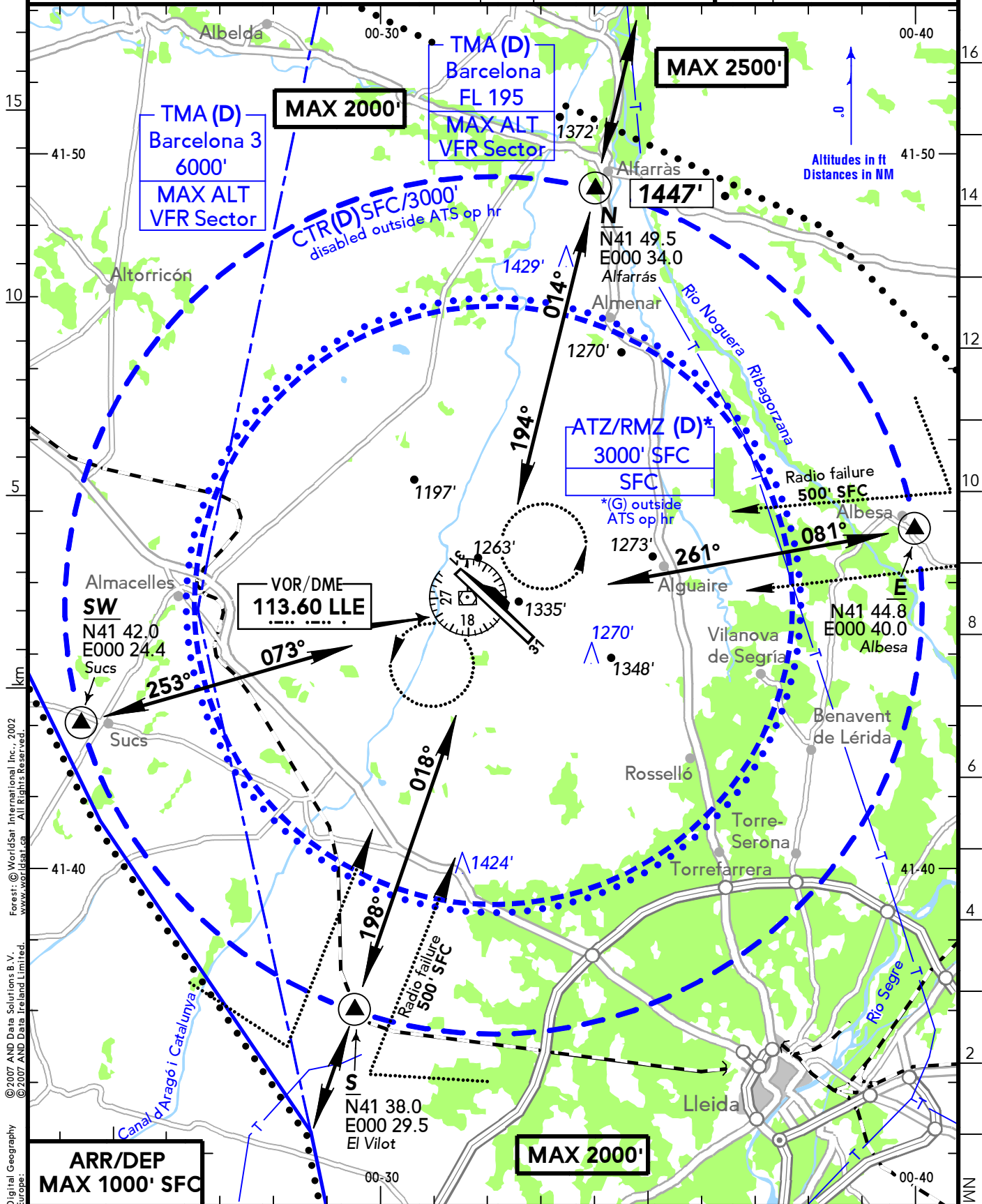
(APP)
BARCELONA APPROACH **127.700** (sp, en)

LEDA
Elev **1152'**/351m
N41 43.7
E000 32.1
8.6 NM NW Lleida

(TWR) *no ATS outside TWR op hr
LLEIDA TOWER* **121.325** (sp, en)
LLEIDA TOWER **121.625** (Ground)

*ILS/DME freq paired.

RWY	ILS	RWY	ILS
		31*	110.90 ILL 313°



© 2007 AND Data Solutions B.V.
© 2007 AND Data Ireland Limited.
Forest: © Worldsat International Inc., 2002
www.worldsat.ca All Rights Reserved.
Digital Geography Europe.

LLEIDA

19-2 21 SEP 18

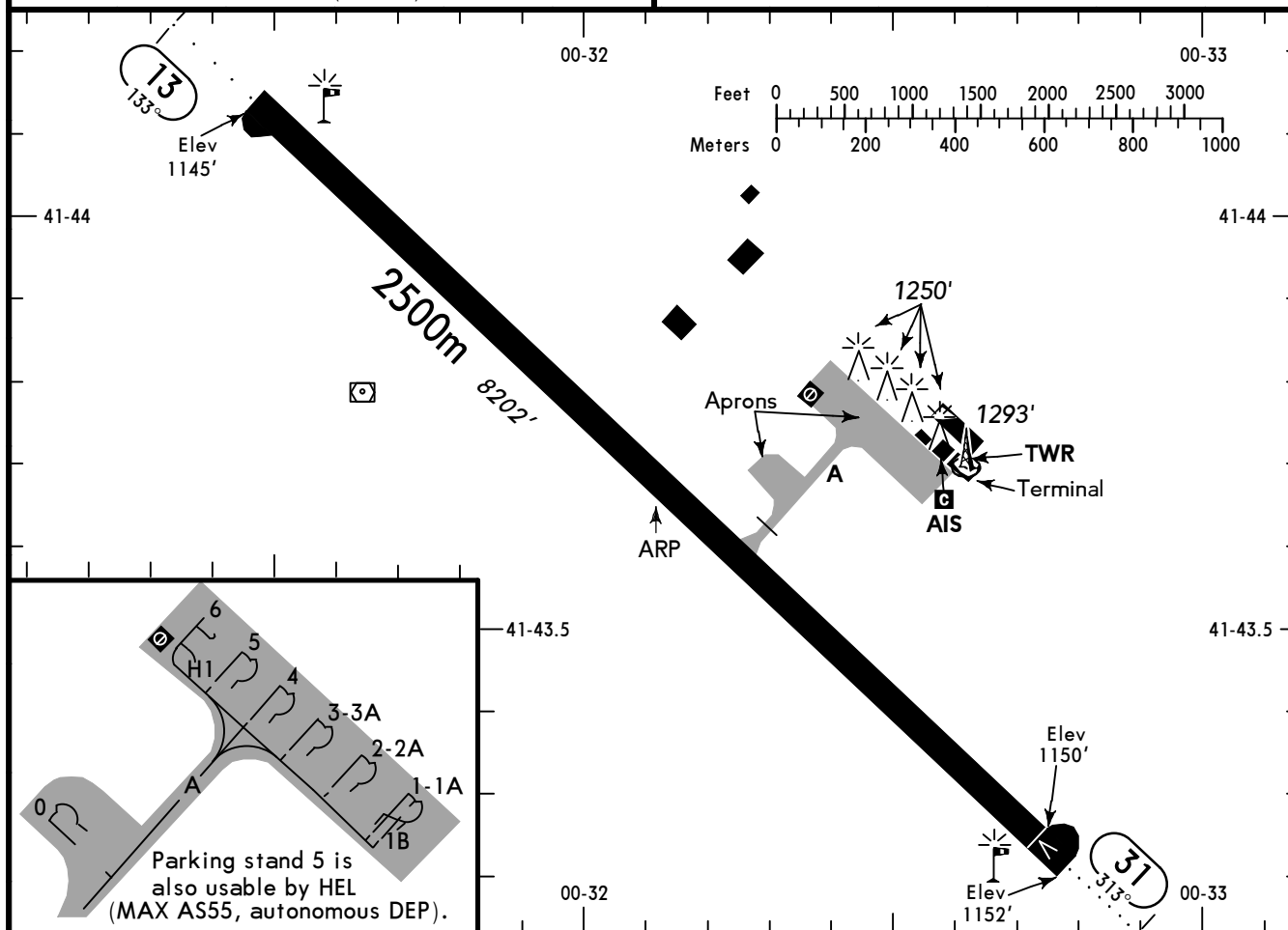


ALGUAIRE

SPAIN



LLEIDA TOWER **121.625** (Ground)



✂️ 1 ✂️ TAXI

☪️ ALS - PAPI - THRL - RL - RCLL - TWYL - APRON - WDI - OBSTL.

RWY No	Dimension (m) - Surface	TORA (m)	LDA (m)	Strength	Lights
13	2500 x 61 Asphalt	2500	2500	PCN 55/F/A/W/T	☪️
31			2410		

RWY 13: RH traffic circuit.

TWR operation in limited hours. On TWR FREQ will spread a message announcing the beginning and end of the provision of the Control Service.

Outside ATS op hr pilots shall contact CECO on 131.675 for assignment of parking stands.

HEL air taxi between RWY and stands will take place from the RWY to the stand on TWY A.

Avoidance of collisions with other aircraft or obstacles on the apron is the responsibility of:

- Pilots when taxiing on the apron.
- Ground handling companies during towing of the aircraft.

The RWY centre line and its extension shall never be crossed without APP or TWR clearance.

ARR/DEP:

During TWR op hrs:

Take contact with TWR before entering/until leaving CTR, maintaining 1000' SFC MAX. On ARR request clearance and report position over VFR points. On DEP notify TWR about VFR point to be used after TKOF.

Out of TWR op hrs:

TWR FREQ will be used for COM between pilots considering as FREQ NO ATS (appropriate by the separation of other ACFT). Before arriving to the ATZ will monitor on Barcelona APP and will not call unless necessary.

Radio failure:

ACFT with COM failure shall enter in the CTR extremely complying with visual flight rules. They will follow the corridors shown and use the holdings, without crossing the RWY, maintaining in sight of TWR and making turns expecting light signals while avoiding any possible traffic in the traffic circuit.

Chart changes since cycle 23-2019

ADD = added chart, REV = revised chart, DEL = deleted chart.

ACT	PROCEDURE IDENT	INDEX	REV DATE	EFF DATE
-----	-----------------	-------	----------	----------

LLEIDA, (ALGUAIRE - LEDA)

TERMINAL CHART CHANGE NOTICES

Chart Change Notices for Airport LEDA

Type: Terminal
Effectivity: Permanent
Begin Date: Immediately
End Date: No end date

Outside ATS hrs: Air to Air Self information on 121.325.

Chart Change Notices for Country ESP

Type: Gen Tmnl (VFR)
Effectivity: Permanent
Begin Date: Immediately
End Date: No end date

Information regarding aerodrome Gibraltar is now to be found under country name GIBRALTAR.

Type: Gen Tmnl (VFR)
Effectivity: Permanent
Begin Date: Immediately
End Date: No end date

Information regarding aerodrome Melilla is now to be found under country name MELILLA.

Type: Gen Tmnl (VFR)
Effectivity: Permanent
Begin Date: Immediately
End Date: No end date

Information regarding aerodromes El Berriel, Fuerteventura, Gran Canaria, Hierro, La Gomera, Lanzarote, La Palma, Tenerife North and Tenerife South are now to be found under country name CANARY IS.

Type: Gen Tmnl (VFR)
Effectivity: Permanent
Begin Date: Immediately
End Date: No end date

EFF 28 MAR 19 Upper limit of TMA (D) Galicia chgd to FL 145.

Type: Gen Tmnl (VFR)
Effectivity: Permanent
Begin Date: Immediately
End Date: No end date

EFF 28 MAR 19 Upper limit of TMA (D) Barcelona chgd to FL 145 (EXC sector 3).

Type: Gen Tmnl (VFR)
Effectivity: Permanent
Begin Date: Immediately
End Date: No end date

Seville TMA Area 5 airspace Class chgd to (D) airspace.

Type: Gen Tmnl (VFR)
Effectivity: Permanent
Begin Date: Immediately
End Date: No end date

EFF 19 JUL 18 RMZ (G) established within TMA Palma VFR sectors (with same lateral and vertical limits).

Type: Gen Tmnl (VFR)

Effectivity: Permanent

Begin Date: Immediately

End Date: No end date

Zaragoza TMA: Unless otherwise authorized by the Direcciyn General de Aviacyn Civil, the use of SSR transponder is compulsory for all aircraft flying within Zaragoza TMA at any level.