

## List of pages in this Trip Kit

Trip Kit Index

Airport Information For LEHC

Terminal Charts For LEHC

Revision Letter For Cycle 24-2019

Change Notices

Notebook

## General Information

Location: HUESCA ESP  
ICAO/IATA: LEHC / HSK  
Lat/Long: N42° 04.8', W000° 19.4'  
Elevation: 1769 ft

Airport Use: Public  
Daylight Savings: Observed  
UTC Conversion: -1:00 = UTC  
Magnetic Variation: 0.0° E

Customs: No  
Airport Type: IFR  
Landing Fee: No  
Control Tower: No  
Jet Start Unit: No  
LLWS Alert: No  
Beacon: No

Sunrise: 0718 Z  
Sunset: 1630 Z

## Runway Information

Runway: 30L  
Length x Width: 6890 ft x 148 ft  
Surface Type: asphalt  
TDZ-Elev: 1699 ft  
Lighting: Edge, ALS, REIL

Runway: 12L  
Length x Width: 2018 ft x 39 ft  
Surface Type: asphalt  
TDZ-Elev: 1768 ft

Runway: 12R  
Length x Width: 6890 ft x 148 ft  
Surface Type: asphalt  
TDZ-Elev: 1768 ft  
Lighting: Edge, ALS, REIL

Runway: 30R  
Length x Width: 2018 ft x 39 ft  
Surface Type: asphalt  
TDZ-Elev: 1756 ft

## Communication Information

Zaragoza Approach: 119.300

Huesca Information: 128.950 AFIS

LEHC/HSK  
PIRINEOS

JEPPESEN  
21 DEC 18 10-3 Eff 3 Jan

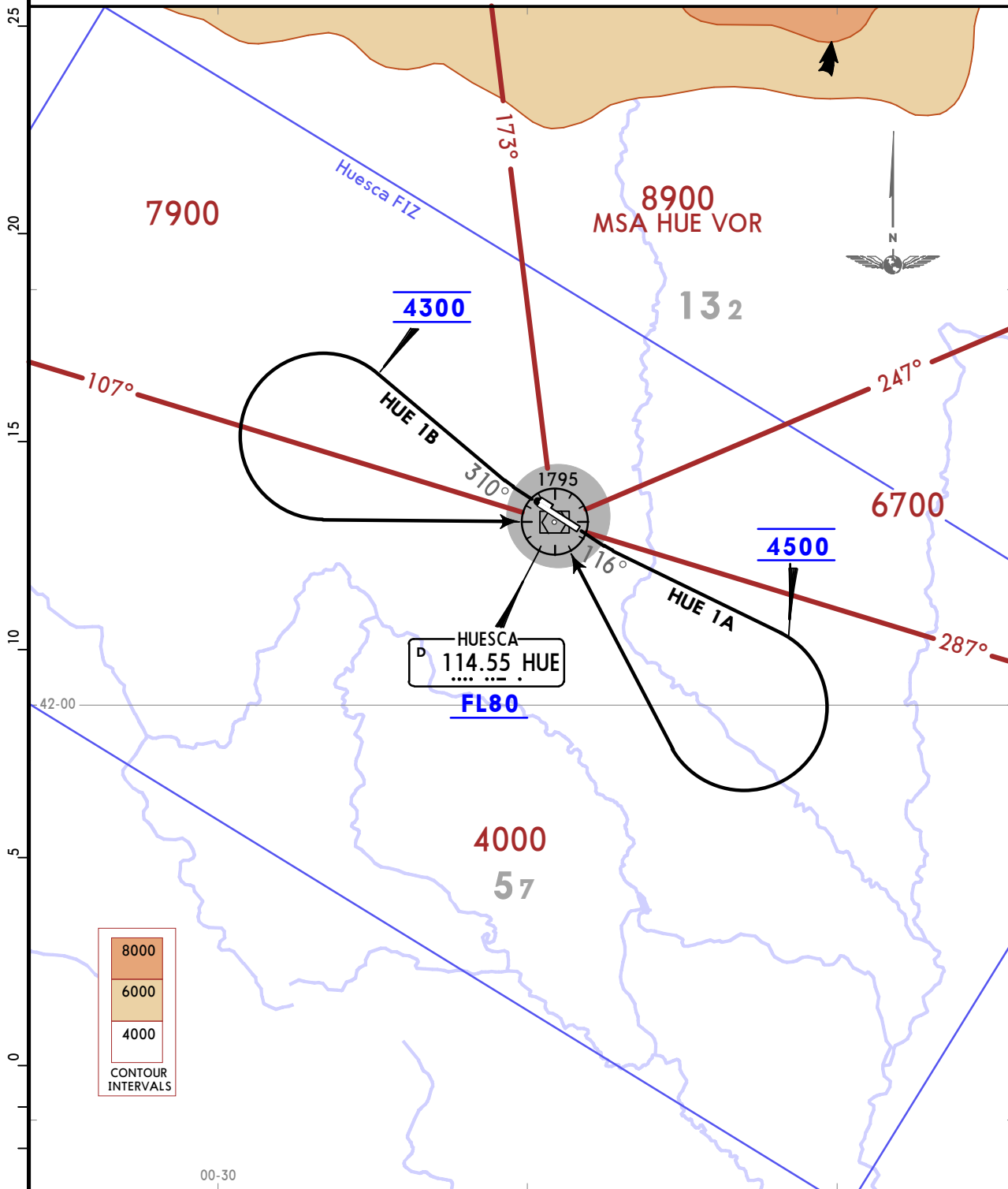
HUESCA, SPAIN  
SID

Apt Elev  
1769

Trans alt: 6000  
RWY 30L: EXPECT close-in obstacles.

HUESCA ONE ALFA (HUE 1A)  
HUESCA ONE BRAVO (HUE 1B)  
RWYS 12R, 30L DEPARTURES

**SPEED: MAX 230 KT WITHIN FLIGHT INFORMATION ZONE**



These SIDs require a minimum climb gradient of 5.5% up to FL80.

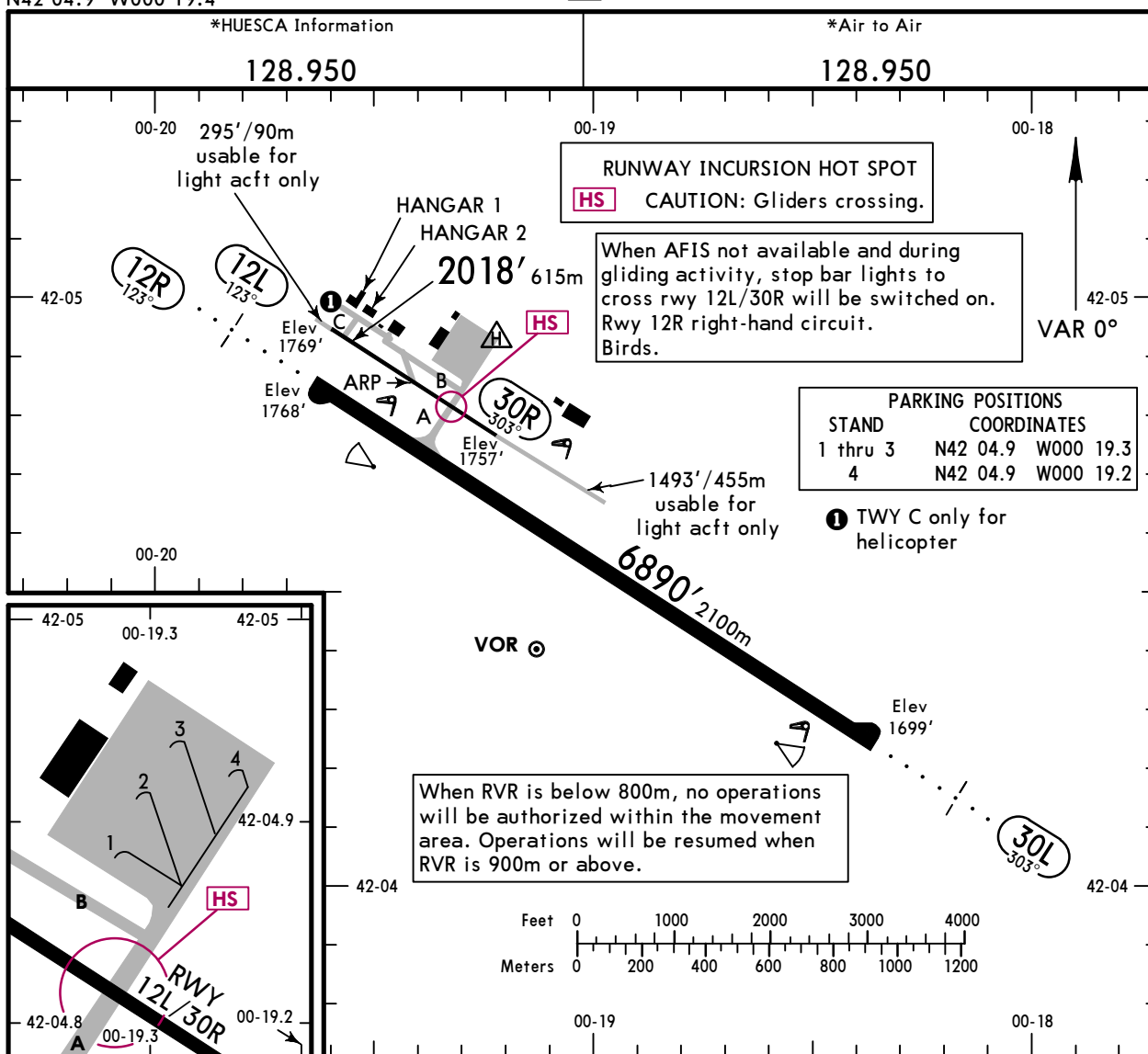
Gnd speed-KT	75	100	150	200	250	300
5.5% V/V (fpm)	418	557	835	1114	1392	1671

SID	RWY	ROUTING
HUE 1A	12R	Climb on runway heading, intercept HUE R116, at 4500 turn RIGHT to HUE.
HUE 1B	30L	Climb on runway heading, intercept HUE R310, at 4300 turn LEFT to HUE.

**LEHC/HSK**  
 Apt Elev **1769'**  
 N42 04.9 W000 19.4

**JEPPESSEN**  
 15 FEB 19 **10-9** Eff 28 Feb

**HUESCA, SPAIN**  
**PIRINEOS**



**ADDITIONAL RUNWAY INFORMATION**

RWY	USABLE LENGTHS			
	LANDING BEYOND		TAKE-OFF	WIDTH
	Threshold	Glide Slope		
12L ② 30R				39' 12m
12R 30L	HIRL (50m) HIRL (50m)	HIALS HIALS	REIL REIL	PAPI(angle 3.0°) PAPI(angle 3.0°)
			RVR	RVR
			③	148' 45m

② Use of rwy is not allowed for acft with tail skid and acft with main gear higher than 8'/2.6m.  
 ③ TAKE-OFF RUN AVAILABLE

**RWY 12R:**  
 From rwy head 6890' (2100m)  
 twy A int 5614' (1711m)

**TAXIING RESTRICTIONS**

Acft circulating on twy B should remain in the intermediate taxi holding position if there are acft refuelling, except if they are refuelling in position 1, closest to the hangars, in which case they may circulate.  
 Taxiing to access hangar 1 and hangar 2 is restricted to:  
 Acft type DA40 & DA42, acft with maximum main gear width 8'/2.6m and other acft, having made a prior study.  
**Without AFIS**  
 Acft moving to the refuelling area, will communicate their post refuelling intentions on 128.950:  
 1. If it moves through twy A, it must be clear, so if any acft wants to access the hangar area, it should wait on the apron.  
 2. If it moves again to the hangar area, the section that goes to the hangar should be clear, so other acft may wait at the twy B holding position after leaving twy A.

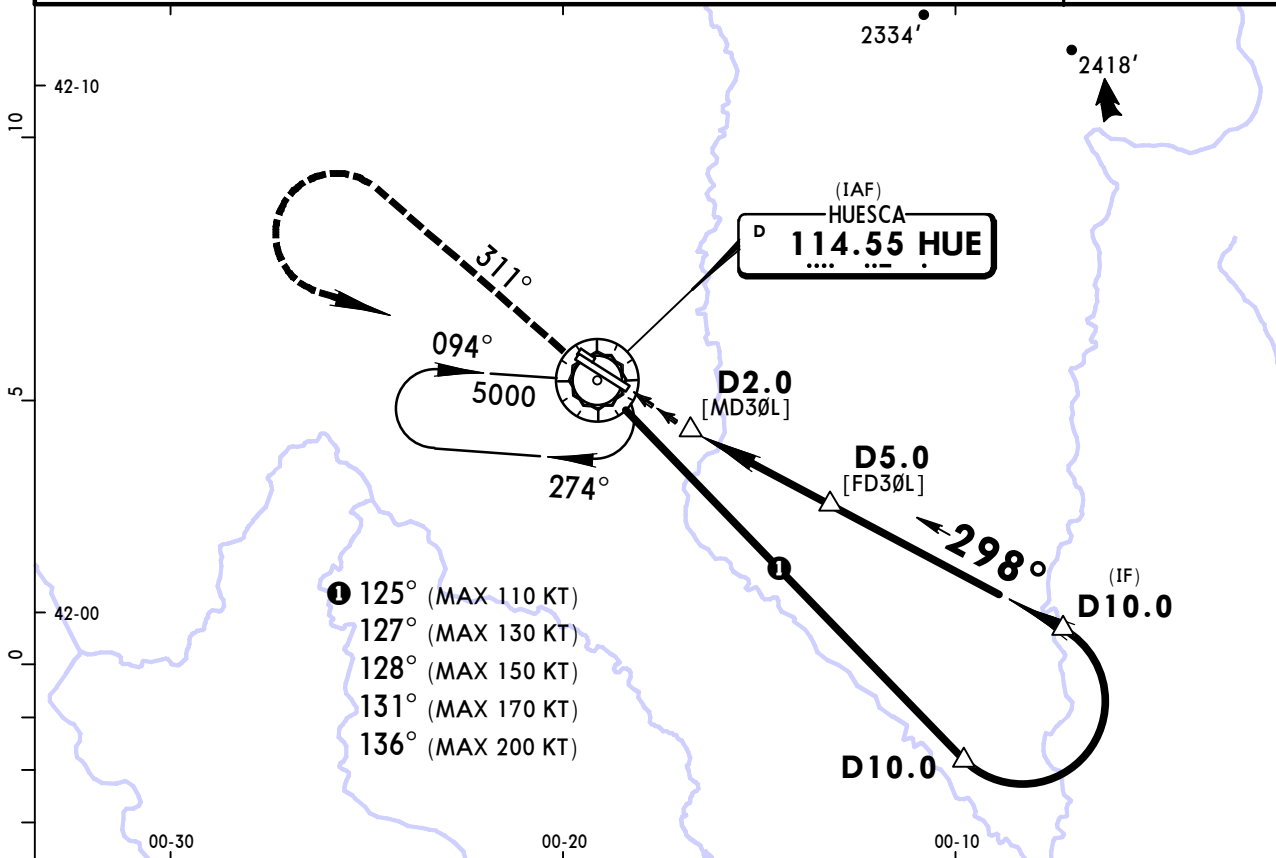
Standard	TAKE-OFF
A	800m
B	
C	
D	

LEHC/HSK  
PIRINEOS

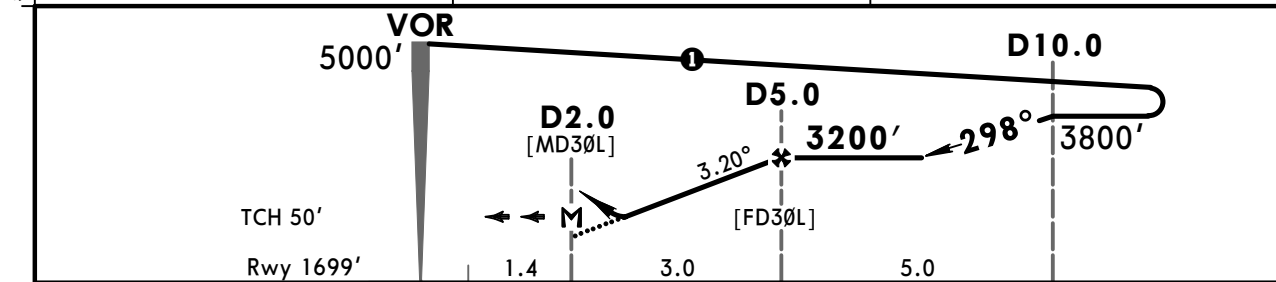
JEPPESEN  
15 FEB 19 (13-1) Eff 28 Feb

HUESCA, SPAIN  
VOR Rwy 30L

ZARAGOZA Approach				*HUESCA Information		
119.3				128.950		
VOR HUE <b>114.55</b>	Final Apch Crs <b>298°</b>	Minimum Alt <b>D5.0</b> 3200' (1501')	DA/MDA(H) <b>2300'</b> (601')	Apt Elev 1769' Rwy 1699'		<p>MSA HUE VOR</p>
<b>MISSED APCH:</b> Climb to VOR, then climb on R-311 to 3000', then turn LEFT to VOR climbing to 5000' and join holding.						
Alt Set: hPa    Rwy Elev: 61 hPa    Trans level: By ATC    Trans alt: 6000' 1. DME required.    2. Final approach track offset 5° from runway centerline. 3. MAX 230 KT within flight information zone.						



HUE DME	3.0	4.0
ALTITUDE	2570'	2910'



Gnd speed-Kts	70	90	100	120	140	160
Descent Angle	3.20°	396	510	566	679	793
MAP at D2.0						

HIALS	HUE	3000'	HUE
REIL	114.55	↑	114.55
PAPI			on R-311
			RT

PANS OPS	<b>Standard</b>		STRAIGHT-IN LANDING RWY 30L		CIRCLE-TO-LAND	
			CDFA		Not authorized North of rwy 12R/30L	
			DA/MDA(H) <b>2300'</b> (601')			
			ALS out		Max Kts	
	A				100	2400' (631') 1500m
B		RVR 1500m		135	2400' (631') 1600m	
C				180	2500' (731') 2400m	
D		RVR 2400m		205	2500' (731') 3600m	

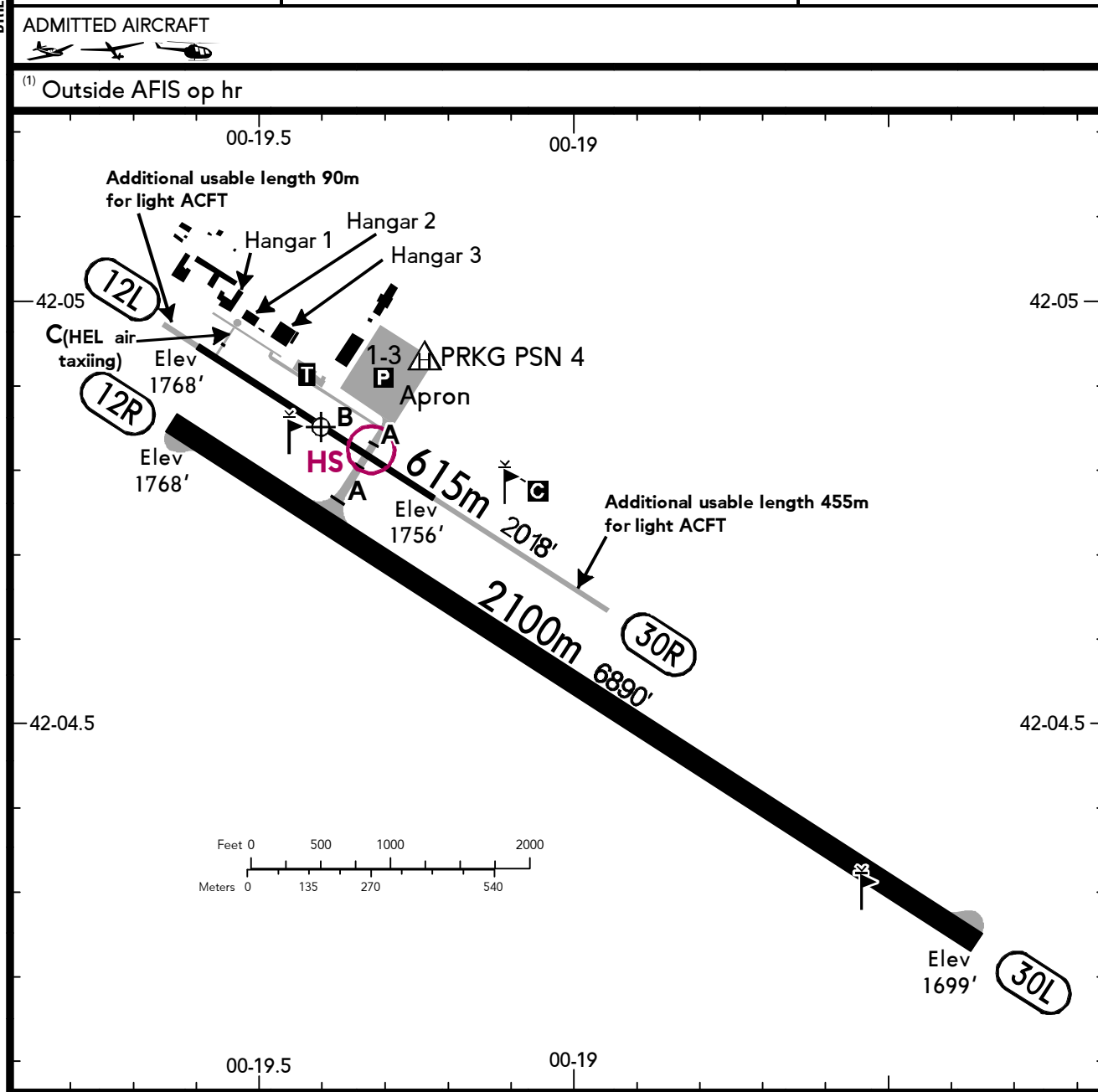


**LEHC**  
PIRINEOS

31 MAY 19 **(19-2)**

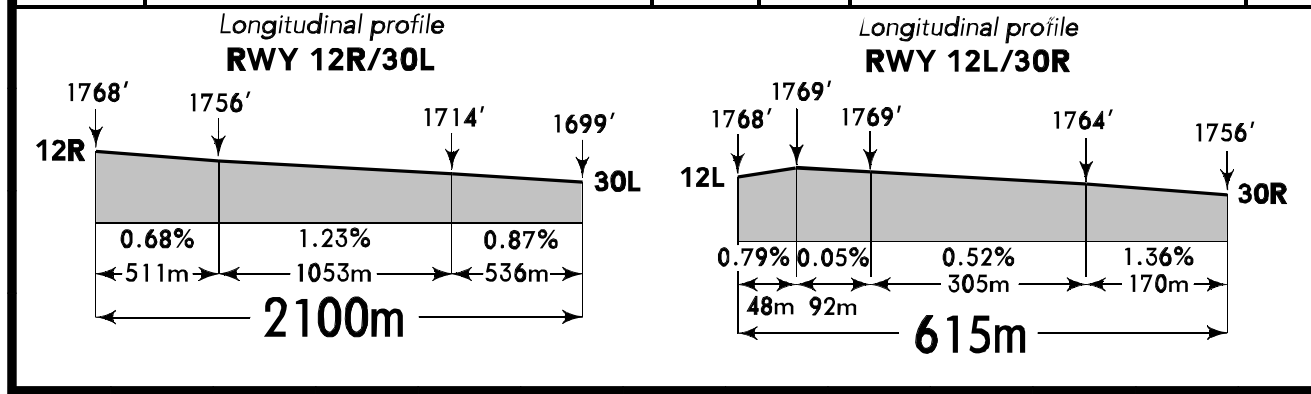
**HUESCA**  
SPAIN

BRIEFING STRIP™	LOCATION Elev <b>1769'</b> /539m N42 04.9 W000 19.4	AFIS HUESCA INFORMACIÓN 128.950 (sp, en)	AIR/AIR HUESCA 128.950 <sup>(1)</sup>
	ADMITTED AIRCRAFT 		
	<sup>(1)</sup> Outside AFIS op hr		



RWY 12R/30L: ALS - PAPI 12R (3.0°), 30L (3.0°) - THRL - RL - TWYL - APRON - WDI.

RWY No	Dimension (m) - Surface	TORA (m)	LDA (m)	Strength	Lights
12R (123°) 30L (303°)	2100 x 45 Asphalt	2100	2100	PCN 75/F/A/W/T	
12L (123°) 30R (303°)	615 x 12 Asphalt	615	615	0.95 t / 0.18 MPa	---



**LEHC**  
PIRINEOS

31 MAY 19

19-3

**HUESCA**  
SPAIN

### Intersection TKOF

RWY	TWY	TORA (m)
12R	A	1711

It is mandatory to submit a flight plan and carry radio equipment on board for flights with origin/destination/alternative Huesca/Pirineos AD.

Birds in the vicinity of AD.

PCL available.

Outside AFIS op hr:

- FREQ out of service;
- FIZ is deactivated and operates as airspace class (G);
- only VFR allowed;
- use Air/Air frequency to notify intentions and position.

APCH or touch and go procedures will not be cleared EXC for ACFT with flight plan with LEHC AD destination or alternate. Simultaneous use of both RWYs is not allowed.

GLD shall proceed via REPs N (Castillo de Montearagón) and E (Velillas).

GLD will proceed to northern traffic circuit without overflying southern traffic circuit.

### RWY Incursion Hot Spots

HS -

**CAUTION: GLDs crossing.**

### General

Whenever IFR traffic notification exists within FIZ or is estimated to entry/exit, entry into FIZ Area 2 is prohibited for VFR flights, access/vacate FIZ Area 1 via established REPs and routes at MAX ALT.

VFR traffic shall not cross the RWY centre line extension, the base leg or the crosswind leg, where there is IFR traffic reported or expected within the FIZ.

RWY centre line or its extension will never be crossed without prior permission from APP.

MAX ALT 500' AGL for Route W - AD within FIZ, when IFR traffic notification within FIZ exists or entry into it is planned. In other cases MAX ALT 1000' AGL.

### Arrivals

ACFT with destination for Huesca (Pirineos) shall proceed via REPs N (Castillo de Montearagón), S (Piracés), E (Velillas) and W (Embalse de Valdabrá) and notify intentions to AFIS before reaching REPs and enter FIZ Area 1 following the established routes to join the southern AD traffic circuit. Without AFIS service it will notify on Air/Air frequency.

### Departures

Outbound traffic intending to leave FIZ shall proceed via REPs N (Castillo de Montearagón), S (Piracés), E (Velillas) and W (Embalse de Valdabrá) and shall notify intentions to AFIS, informing of DEP route and REP to be used. Without AFIS service it will notify on Air/Air frequency.

### RWY Restrictions

TKOF from the intersection of RWY 30R/12L with TWY A is not allowed.

The operations in RWY 12L/30R are not allowed for:

- ACFT with tail skid;
- ACFT with main gear higher than 2.6m;
- ACFT operating as school flights.

### Taxiing Restrictions

ACFT taxiing via TWY B should remain in the intermediate holding position if there are ACFT refuelling, EXC if they are refuelling in PSN 1, closest to the hangars, in which case they will be able to taxiing.

Taxiing to access Hangar 1 and Hangar 2 is restricted to:

- ACFT type DA40 and DA42;
- ACFT with MAX train width 2.6m;
- Other ACFT, having made a prior study.

### Traffic Circuits

Traffic circuits at 1000' AGL.

RWY 12L & 12R RH traffic circuit.

GLD traffic circuit RWY 30R: RH.

GLD traffic circuit shall never be crossed.

### HEL Operations

Huesca/Pirineos AD has not defined any specific area for HEL operations.

Air and ground taxiing is allowed. Air movement is not permitted.

HEL larger than AS32 prohibited.

Final APCH and TKOF operations will be carried out from RWY 12R/30L, and following the same procedures that the fixed-wing aircraft follow.

Taxiing will be carried out via TWY A following AFIS information or transmitting position and instructions on Air/Air freq when AFIS is not AVBL.

Apron taxiing (air and ground) will be carried out via the TWY of access to the stand following the marked alignment.

### HEL Operation for authorised ACFT

The type EC-135 and BO-105 helicopters from the Guardia Civil Air Unit in Huesca are the only aircraft authorized to accomplish the following operation procedure.

Final approach and take-off operations will be carried out from RWY 12R/30L.

Taxiing will be carried out via TWY C and communications will use AFIS freq (or Air/Air freq when AFIS is not AVBL).

TLOF located at TWY C end.

### COM Failure

ACFT with communication failure shall not enter FIZ Area 2. They shall access AD from REP S maintaining 1000' AGL, holding to the S without crossing RWY until receiving light signals while avoiding any possible TFC in AD traffic circuit. To contact AFIS use phone number 974280586.

## Chart changes since cycle 23-2019

ADD = added chart, REV = revised chart, DEL = deleted chart.

ACT	PROCEDURE IDENT	INDEX	REV DATE	EFF DATE
<b>HUESCA, (PIRINEOS - LEHC)</b>				

## TERMINAL CHART CHANGE NOTICES

### Chart Change Notices for Airport LEHC

**Type:** Terminal  
**Effectivity:** Temporary  
**Begin Date:** 20191107  
**End Date:** 20201107

The switch-on of the lights of visual aids will be delayed by 15 minutes.

**Type:** Terminal  
**Effectivity:** Temporary  
**Begin Date:** 20170622  
**End Date:** Until Further Notice

REIL RWY 30L unserviceable (based on SUP 121/17, with eff date 6 DEC 18 based on SUP 158/18).

**Type:** Terminal  
**Effectivity:** Temporary  
**Begin Date:** 20170525  
**End Date:** Until Further Notice

REIL RWY 12R unserviceable (based on SUP 120/17, with effective date 06 DEC 18 based on SUP 157/18).

**Type:** Terminal (VFR)  
**Effectivity:** Temporary  
**Begin Date:** Immediately  
**End Date:** Until Further Notice

Until APRX 31 DEC 19 THR 12R and THR 30L identification lights u/s.

**Type:** Terminal (VFR)  
**Effectivity:** Temporary  
**Begin Date:** Immediately  
**End Date:** Until Further Notice

EFF 07 NOV 19 until APRX 07 NOV 20 Switch-on of visual aids lights delayed by 15 MIN.

### Chart Change Notices for Country ESP

**Type:** Gen Tmnl (VFR)  
**Effectivity:** Permanent  
**Begin Date:** Immediately  
**End Date:** No end date

Information regarding aerodrome Gibraltar is now to be found under country name GIBRALTAR.

**Type:** Gen Tmnl (VFR)  
**Effectivity:** Permanent  
**Begin Date:** Immediately  
**End Date:** No end date

Information regarding aerodrome Melilla is now to be found under country name MELILLA.

**Type:** Gen Tmnl (VFR)  
**Effectivity:** Permanent  
**Begin Date:** Immediately  
**End Date:** No end date

Information regarding aerodromes El Berriel, Fuerteventura, Gran Canaria, Hierro, La Gomera, Lanzarote, La Palma, Tenerife North and Tenerife South are now to be found under country name CANARY IS.

**Type:** Gen Tmnl (VFR)  
**Effectivity:** Permanent  
**Begin Date:** Immediately  
**End Date:** No end date

EFF 28 MAR 19 Upper limit of TMA (D) Galicia chgd to FL 145.

**Type:** Gen Tmnl (VFR)  
**Effectivity:** Permanent  
**Begin Date:** Immediately  
**End Date:** No end date

EFF 28 MAR 19 Upper limit of TMA (D) Barcelona chgd to FL 145 (EXC sector 3).

**Type:** Gen Tmnl (VFR)  
**Effectivity:** Permanent  
**Begin Date:** Immediately  
**End Date:** No end date

Seville TMA Area 5 airspace Class chgd to (D) airspace.

**Type:** Gen Tmnl (VFR)  
**Effectivity:** Permanent  
**Begin Date:** Immediately  
**End Date:** No end date

EFF 19 JUL 18 RMZ (G) established within TMA Palma VFR sectors (with same lateral and vertical limits).

**Type:** Gen Tmnl (VFR)  
**Effectivity:** Permanent  
**Begin Date:** Immediately  
**End Date:** No end date

Zaragoza TMA: Unless otherwise authorized by the Direcciyn General de Aviacyn Civil, the use of SSR transponder is compulsory for all aircraft flying within Zaragoza TMA at any level.