

List of pages in this Trip Kit

Trip Kit Index

Airport Information For LEPP

Terminal Charts For LEPP

Revision Letter For Cycle 24-2019

Change Notices

Notebook

General Information

Location: PAMPLONA ESP
ICAO/IATA: LEPP / PNA
Lat/Long: N42° 46.2', W001° 38.8'
Elevation: 1506 ft

Airport Use: Public
Daylight Savings: Observed
UTC Conversion: -1:00 = UTC
Magnetic Variation: 1.0° W

Fuel Types: 100 Octane (LL), Jet, Jet A-1
Customs: Restricted
Airport Type: IFR
Landing Fee: Yes
Control Tower: Yes
Jet Start Unit: No
LLWS Alert: No
Beacon: No

Sunrise: 0726 Z
Sunset: 1633 Z

Runway Information

Runway: 15
Length x Width: 7890 ft x 148 ft
Surface Type: asphalt
TDZ-Elev: 1483 ft
Lighting: Edge, ALS, Centerline, REIL

Runway: 33
Length x Width: 7890 ft x 148 ft
Surface Type: asphalt
TDZ-Elev: 1500 ft
Lighting: Edge, ALS, Centerline, REIL
Displaced Threshold: 1640 ft

Communication Information

Pamplona Tower: 118.200
Pamplona Ground: 121.700
Pamplona Approach: 118.200

LEPP/PNA
PAMPLONA

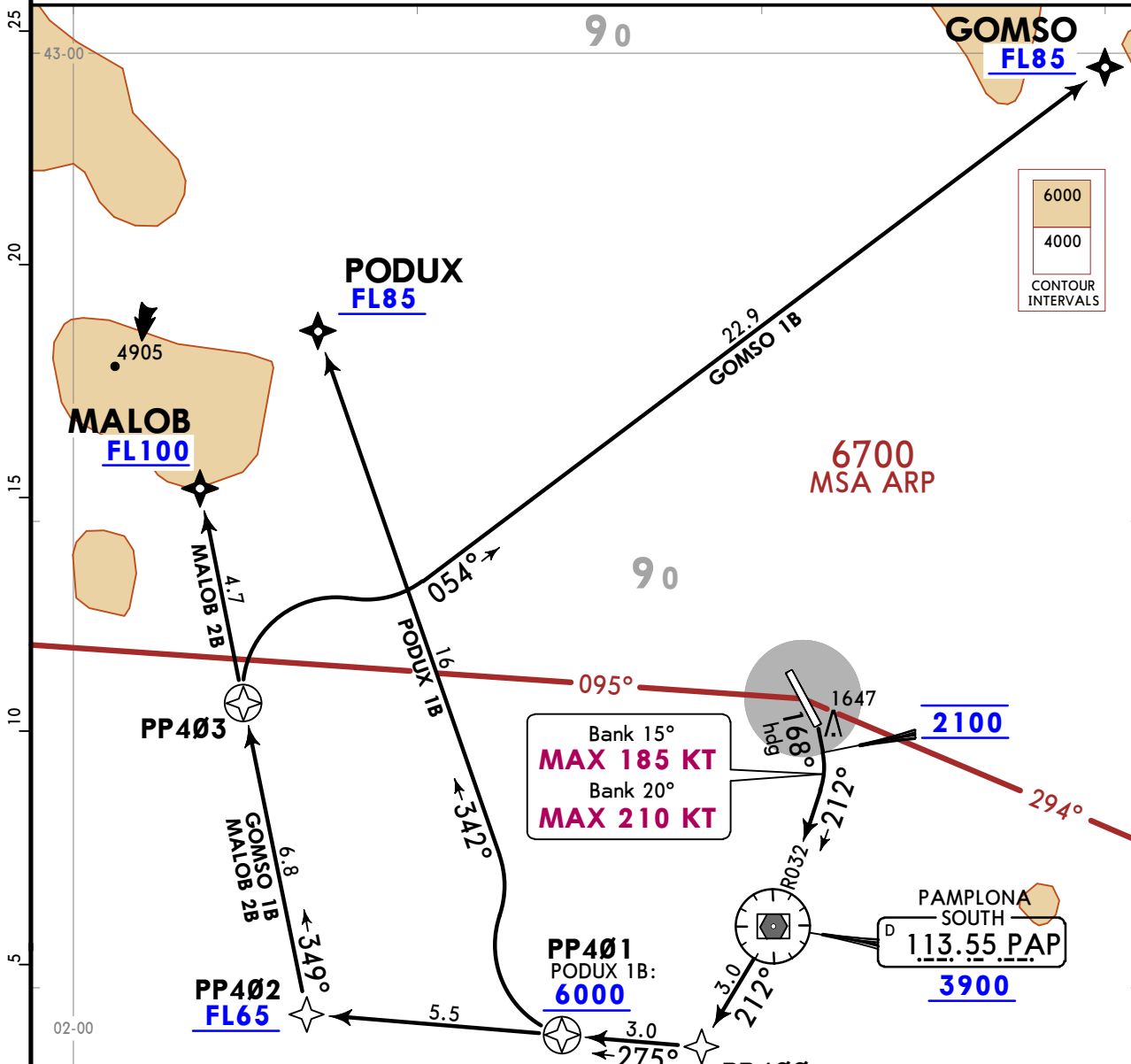
JEPPESEN
22 MAR 19 10-3 Eff 28 Mar

PAMPLONA, SPAIN
RNAV SID

Apt Elev 1506
Trans alt: 6000
1. RNAV (DME/DME).
2. P-RNAV approval required.
3. EXPECT close-in obstacles.

GOMSO 1B [GOMS1B], MALOB 2B [MALO2B]
PODUX 1B [PODU1B]
RWY 15 RNAV DEPARTURES

SPEED: MAX 250 KT UNTIL REACHING FL100



These SIDs require minimum climb gradients of
GOMSO & PODUX 1B: 8.0% up to 5000 due to airspace restrictions and DME coverage.
MALOB 2B: 8.0% up to 5000 due to airspace restrictions and DME coverage, then 5.0% up to FL100.

Gnd speed-KT	75	100	150	200	250	300
5.0% V/V (fpm)	380	506	760	1013	1266	1519
8.0% V/V (fpm)	608	810	1215	1620	2025	2430

Turns before DER are not permitted.

INITIAL CLIMB

Climb on 168° heading to 2100, turn RIGHT, intercept PAP R032 inbound to PAP.

SID	ROUTING
GOMSO 1B	PAP (3900+) - PP400 (5400+) - PP402 (FL65+) - PP403 - GOMSO (FL85+).
MALOB 2B	PAP (3900+) - PP400 (5400+) - PP402 (FL65+) - MALOB (FL100+).
PODUX 1B	PAP (3900+) - PP400 (5400+) - PP401 (6000+) - PODUX (FL85+).

LEPP/PNA
PAMPLONA

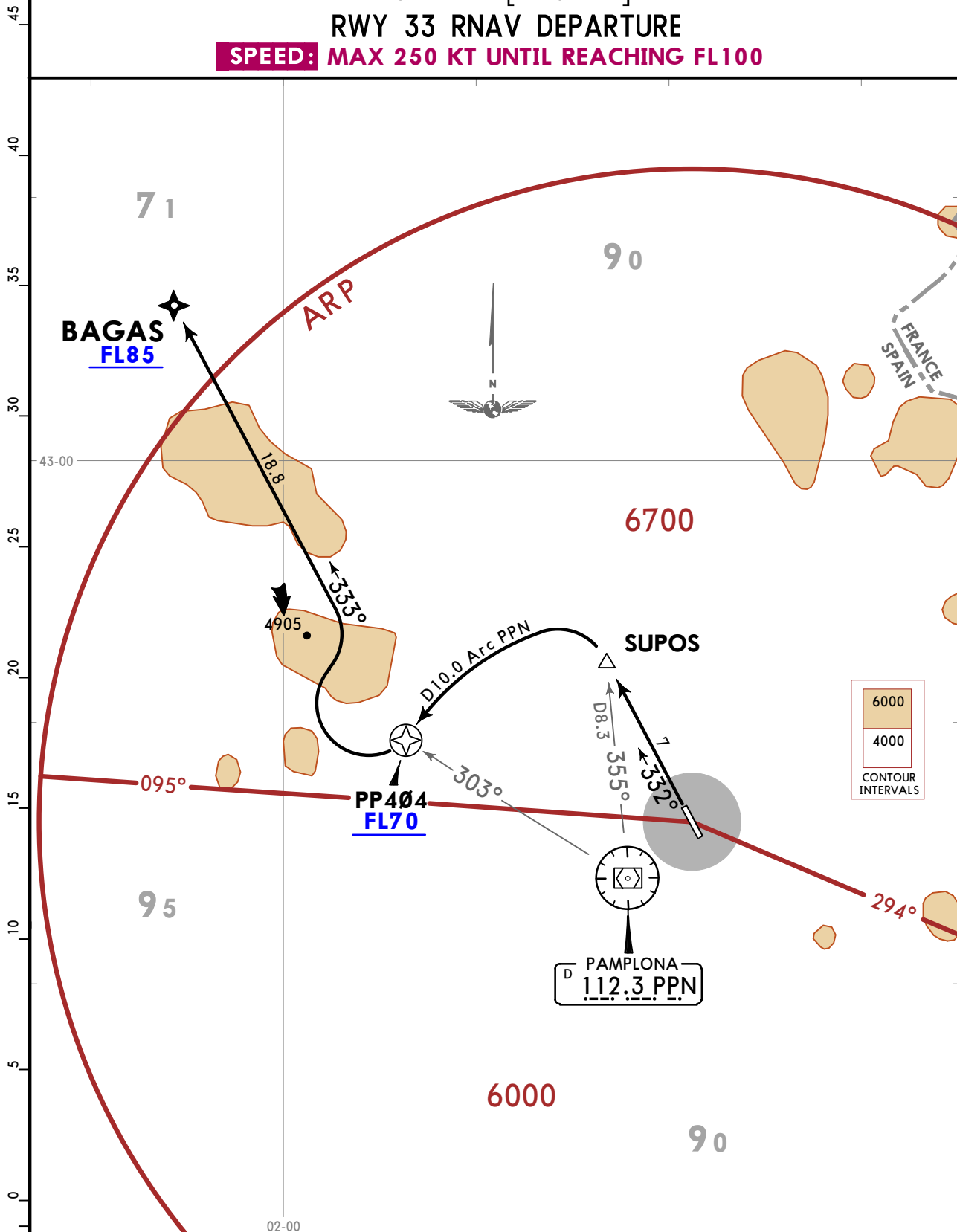
JEPPESEN
22 MAR 19 (10-3A) Eff 28 Mar

PAMPLONA, SPAIN
RNAV SID

Apt Elev 1506
Trans alt: 6000
1. RNAV (DME/DME).
2. P-RNAV approval required.

BAGAS 1D [BAGA1D]
RWY 33 RNAV DEPARTURE

SPEED: MAX 250 KT UNTIL REACHING FL100



This SID requires a minimum climb gradient of 6.0% up to FL70.

Gnd speed-KT	75	100	150	200	250	300
6.0% V/V (fpm)	456	608	911	1215	1519	1823

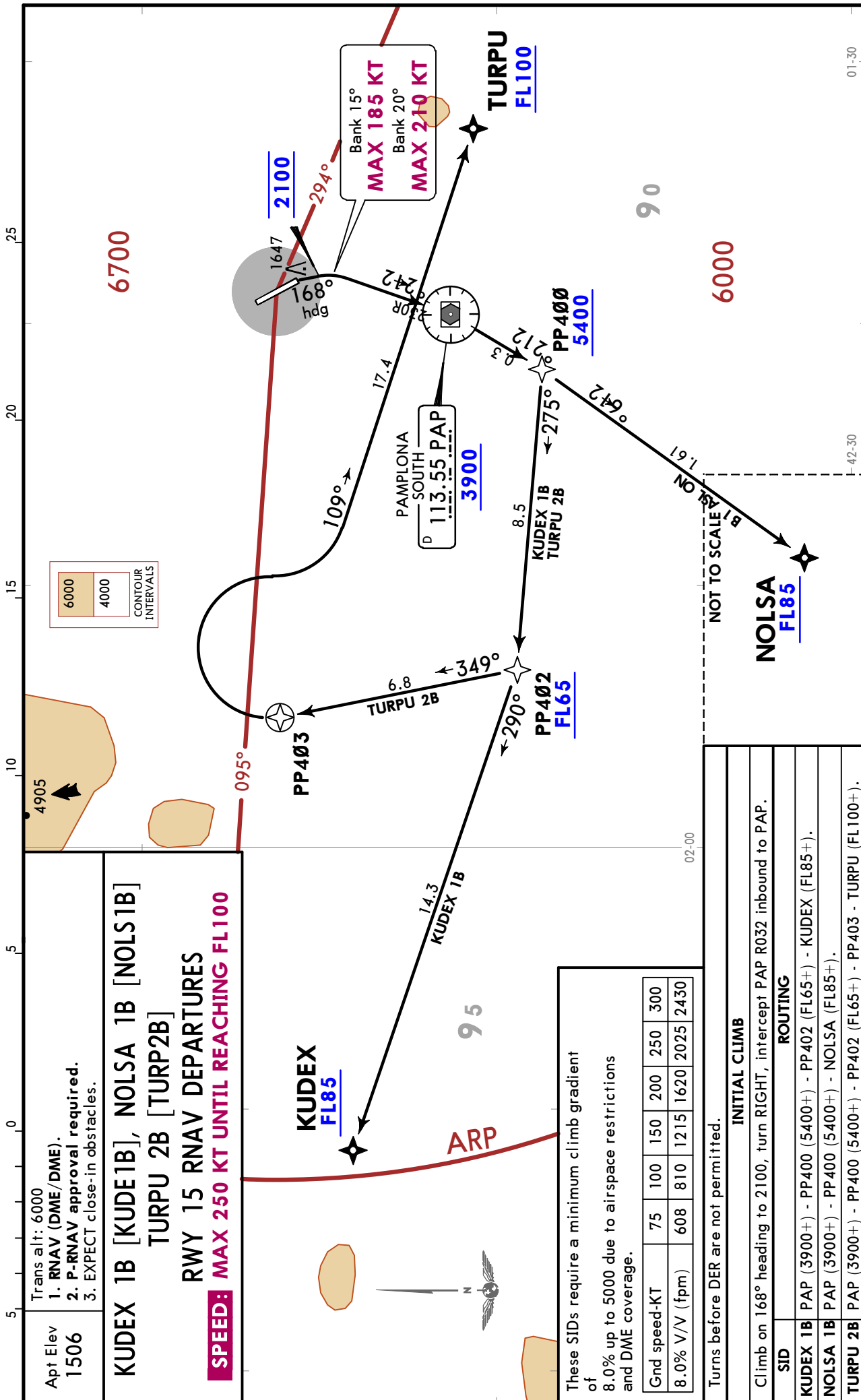
INITIAL CLIMB/ROUTING

Climb on runway heading to SUPOS, turn LEFT, along D10.0 Arc PPN to PP404 (FL70+) - BAGAS (FL85+).

LEPP/PNA
PAMPLONA

JEPPESSEN
22 MAR 19 10-3B Eff 28 Mar

PAMPLONA, SPAIN
RNAV SID



LEPP/PNA
PAMPLONA

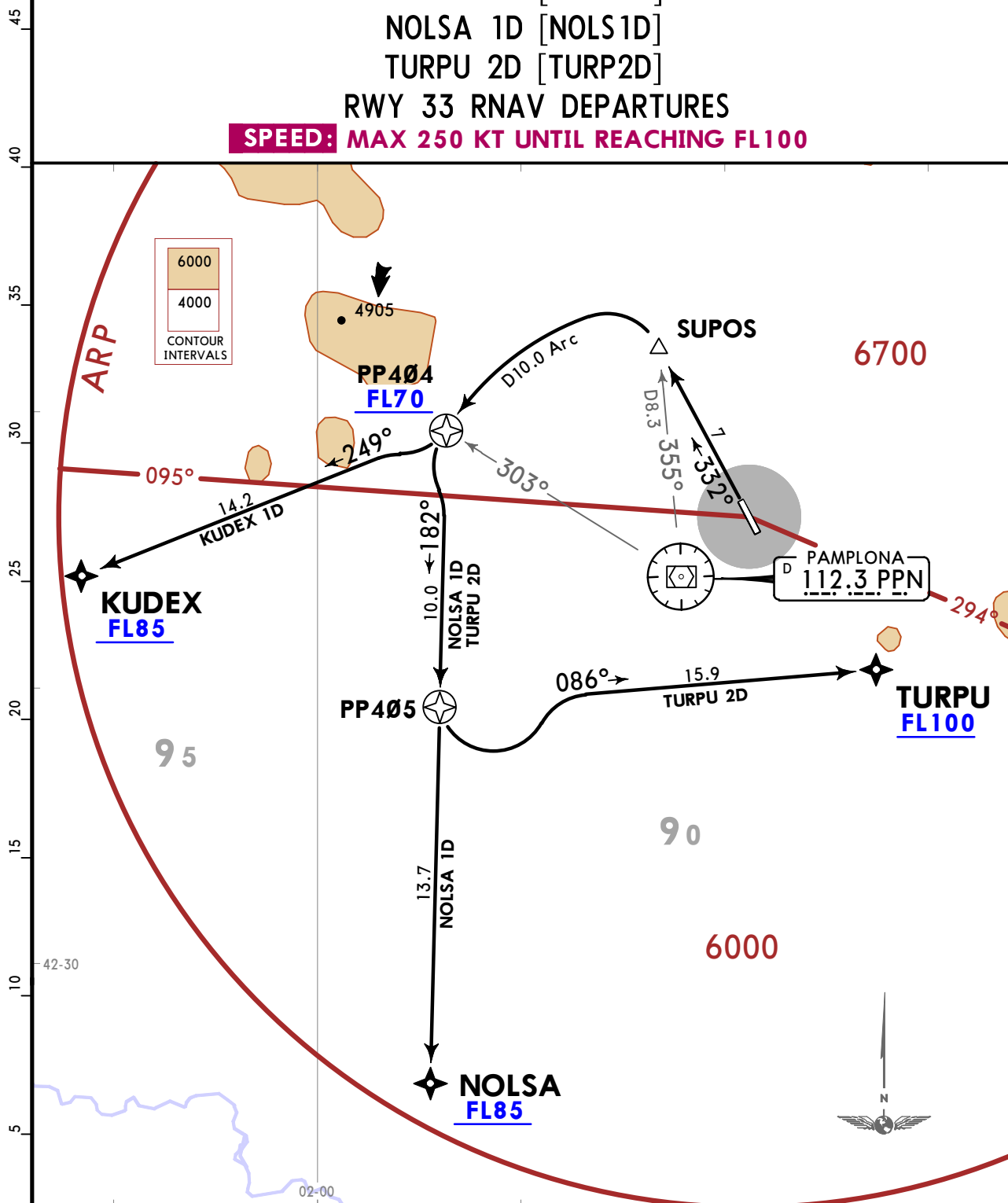
JEPPESEN
22 MAR 19 (10-3C) Eff 28 Mar

PAMPLONA, SPAIN
RNAV SID

Apt Elev 1506
Trans alt: 6000
1. RNAV (DME/DME).
2. P-RNAV approval required.

KUDEX 1D [KUDEX1D]
NOLSA 1D [NOLSA1D]
TURPU 2D [TURP2D]
RWY 33 RNAV DEPARTURES

SPEED: MAX 250 KT UNTIL REACHING FL100



These SIDs require a minimum climb gradient of 6.0% up to FL70.

Gnd speed-KT	75	100	150	200	250	300
6.0% V/V (fpm)	456	608	911	1215	1519	1823

INITIAL CLIMB

Climb on runway heading to SUPOS, turn LEFT, along D10.0 Arc PPN to PP404.

SID	ROUTING
KUDEX 1D	PP404 (FL70+) - KUDEX (FL85+).
NOLSA 1D	PP404 (FL70+) - NOLSA (FL85+).
TURPU 2D	PP404 (FL70+) - PP405 - TURPU (FL100+).

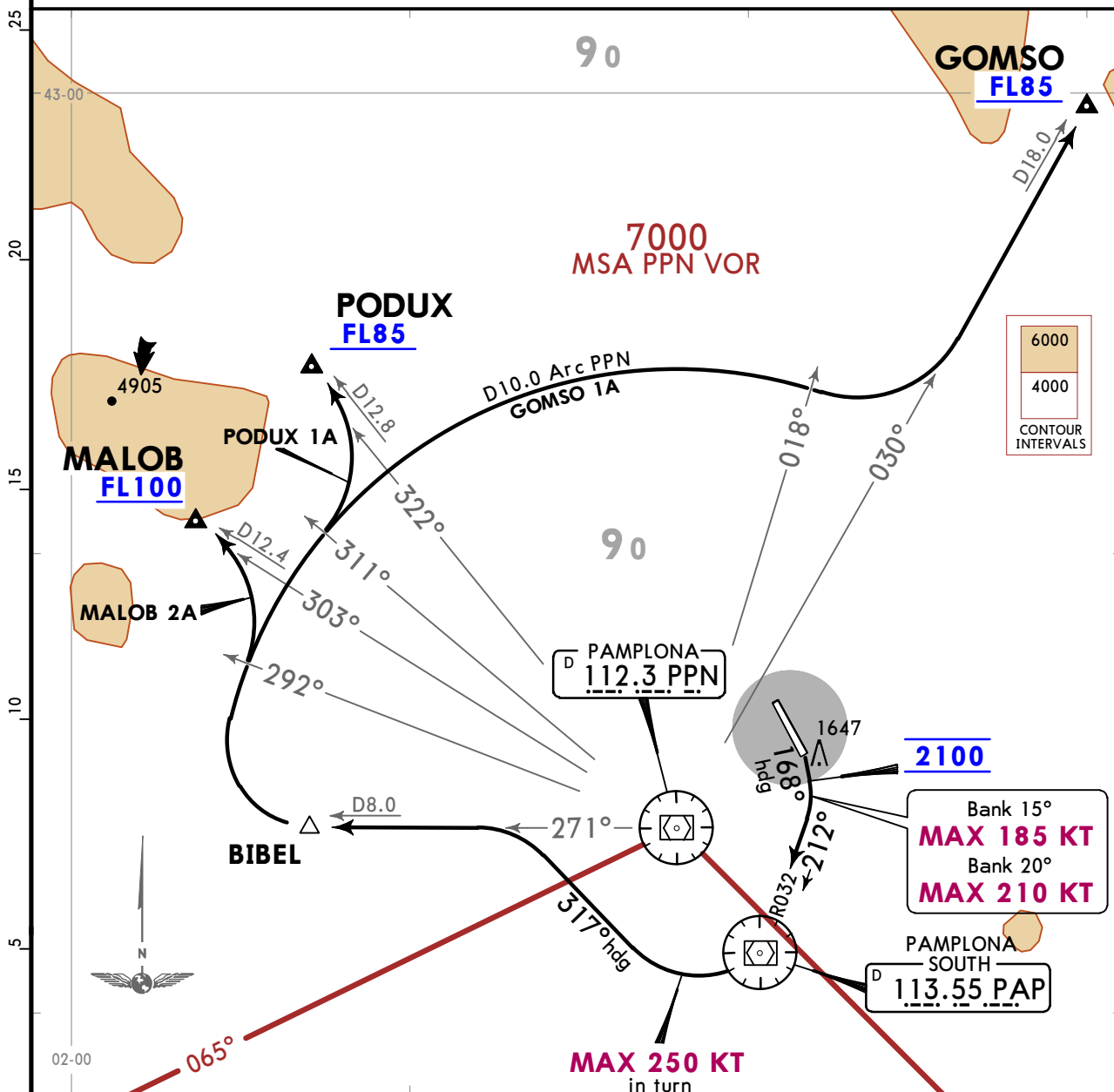
LEPP/PNA
PAMPLONA

JEPPESEN
22 MAR 19 **10-3D** **Eff 28 Mar**

PAMPLONA, SPAIN
SID

Apt Elev **1506**
Trans alt: 6000
EXPECT close-in obstacles.

GOMSO 1A [GOMS1A]
MALOB 2A [MALO2A]
PODUX 1A [PODU1A]
RWY 15 DEPARTURES



These SIDs require minimum climb gradients of
MALOB 2A: 8.0% up to 5000, then 5.0% up to FL100.
GOMSO & PODUX 1A: 8.0% up to 5000.

Gnd speed-KT	75	100	150	200	250	300
5.0% V/V (fpm)	380	506	760	1013	1266	1519
8.0% V/V (fpm)	608	810	1215	1620	2025	2430

Turns before DER are not permitted.

INITIAL CLIMB

Climb on 168° heading to 2100, turn RIGHT, intercept PAP R032 inbound to PAP, turn RIGHT, 317° heading, intercept PPN R271 to BIBEL, turn RIGHT, along D10.0 Arc PPN.

SID	ROUTING
GOMSO 1A	When passing PPN R018 turn LEFT, intercept PPN R030 to GOMSO.
MALOB 2A	When passing PPN R292 turn LEFT, intercept PPN R303 to MALOB.
PODUX 1A	When passing PPN R311 turn LEFT, intercept PPN R322 to PODUX.

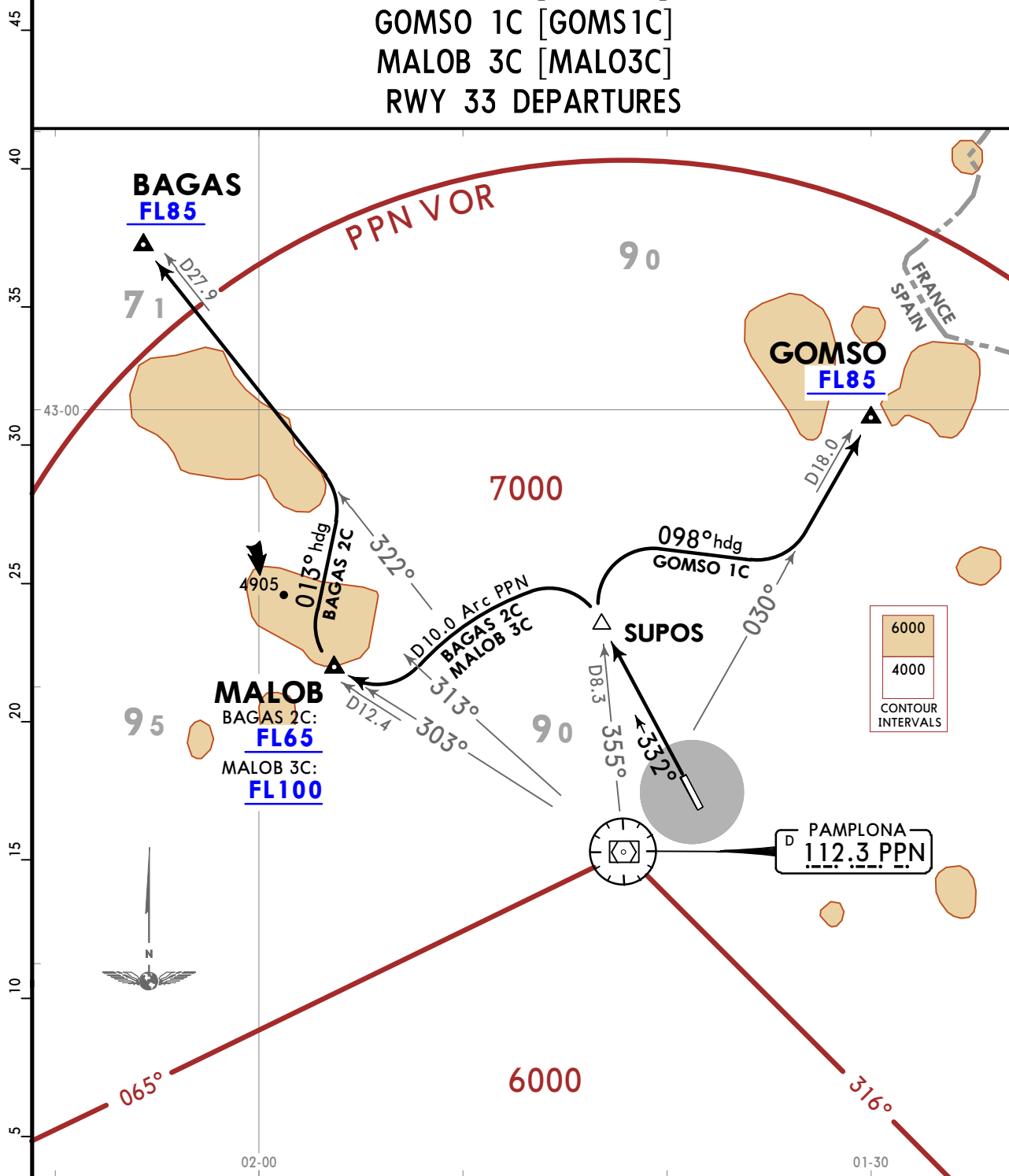
LEPP/PNA
PAMPLONA

JEPPESEN
22 MAR 19 (10-3E) Eff 28 Mar

PAMPLONA, SPAIN
SID

Apt Elev 1506
Trans alt: 6000

BAGAS 2C [BAGA2C]
GOMSO 1C [GOMS1C]
MALOB 3C [MALO3C]
RWY 33 DEPARTURES



These SIDs require minimum climb gradients of

- BAGAS 2C:** 5.5% up to 4000.
- GOMSO 1C:** 5.3% up to FL85.
- MALOB 3C:** 8.2% up to FL100.

Gnd speed-KT	75	100	150	200	250	300
5.3% V/V (fpm)	403	537	805	1073	1342	1610
5.5% V/V (fpm)	418	557	835	1114	1392	1671
8.2% V/V (fpm)	623	830	1246	1661	2076	2491

SID

ROUTING

BAGAS 2C

Climb on runway heading to SUPOS, turn LEFT, along D10.0 Arc PPN, when passing PPN R313 turn RIGHT, intercept PPN R303 to MALOB, turn RIGHT, 013° heading, intercept PPN R322 to BAGAS.

GOMSO 1C

Climb on runway heading to SUPOS, turn RIGHT, 098° heading, intercept PPN R030 to GOMSO.

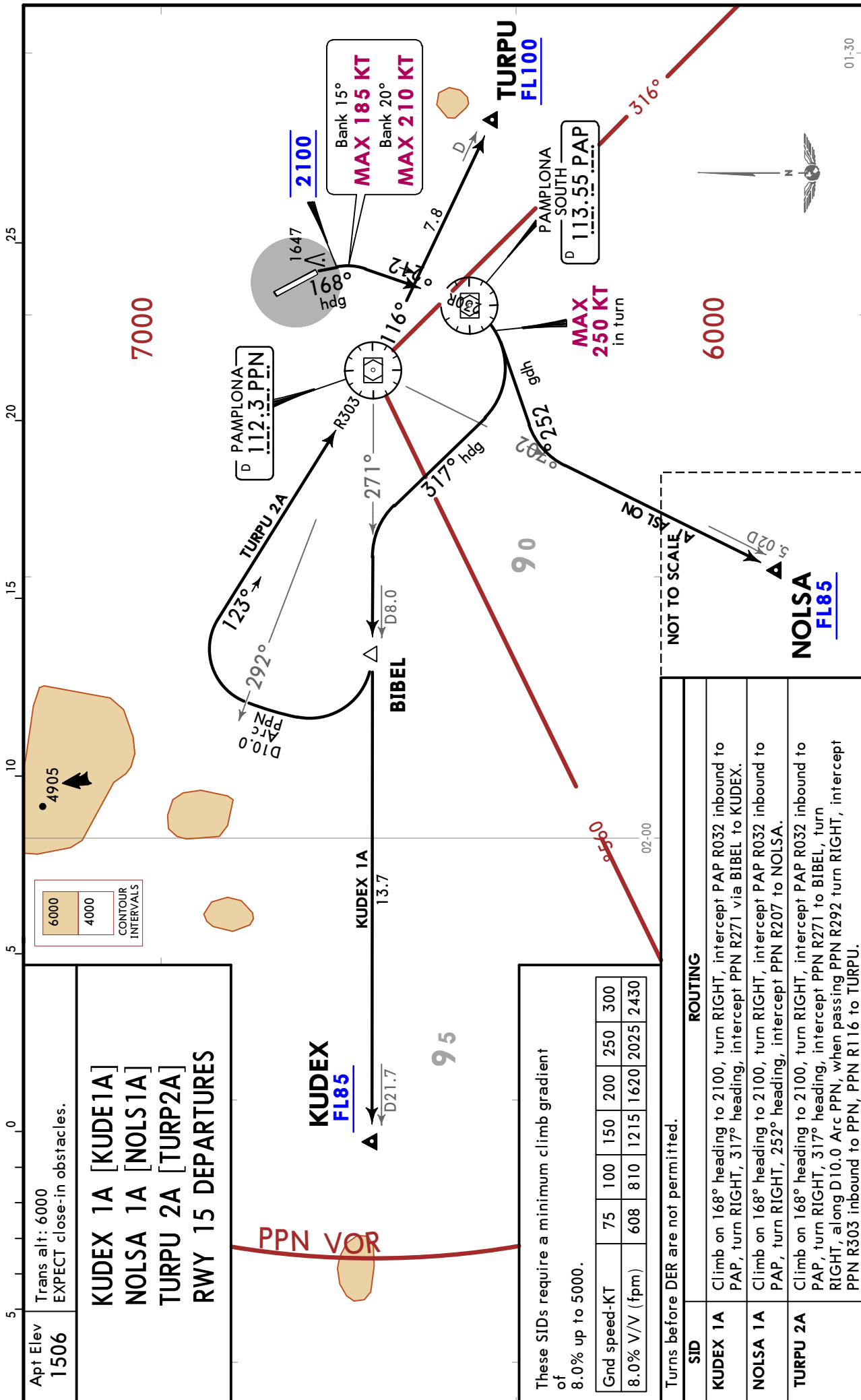
MALOB 3C

Climb on runway heading to SUPOS, turn LEFT, along D10.0 Arc PPN, when passing PPN R313 turn RIGHT, intercept PPN R303 to MALOB.

LEPP/PNA
PAMPLONA

JEPPESSEN
22 MAR 19 10-3F Eff 28 Mar

PAMPLONA, SPAIN
SID



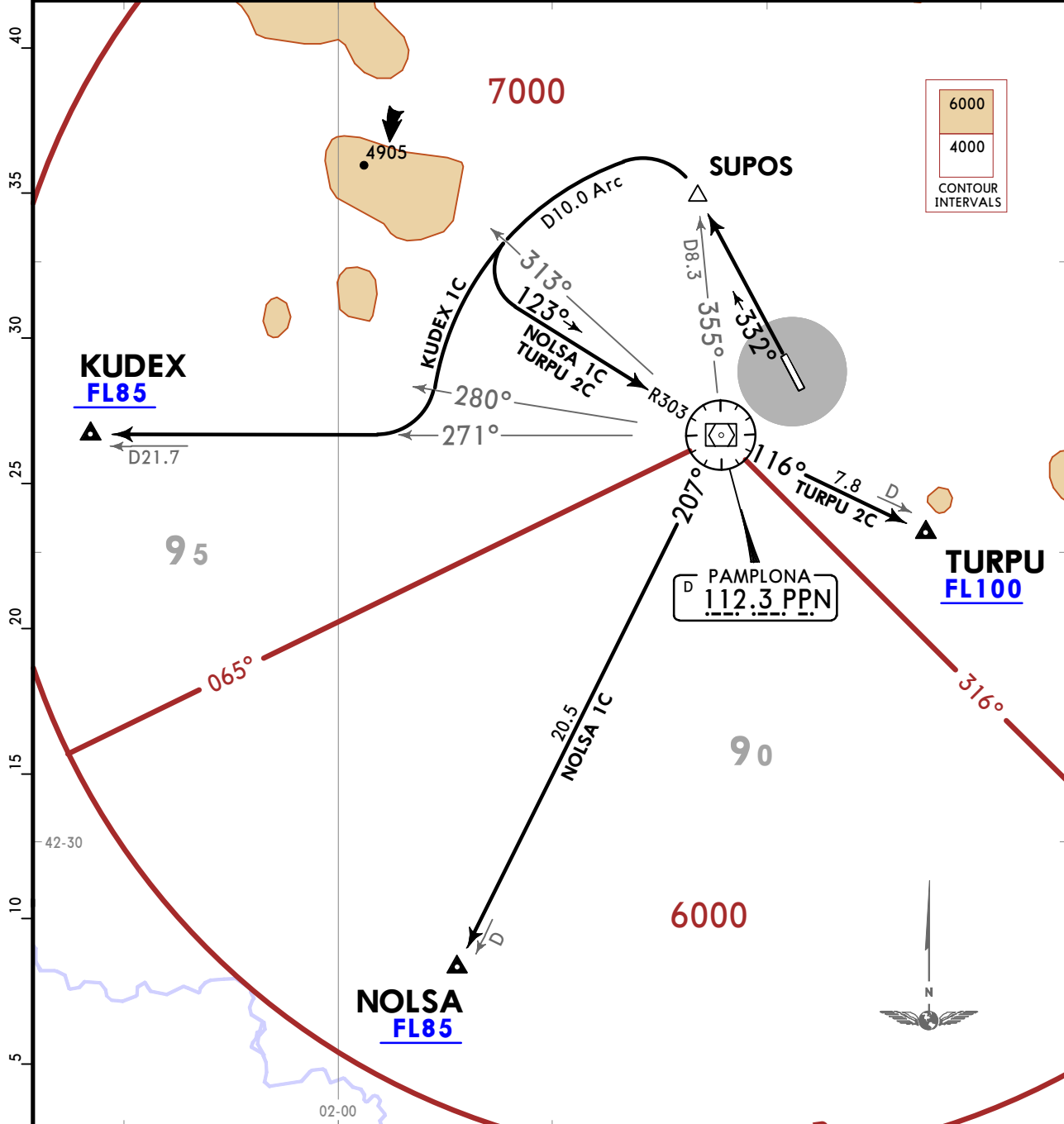
LEPP/PNA
PAMPLONA

JEPPESEN
22 MAR 19 **(10-3G)** **Eff 28 Mar**

PAMPLONA, SPAIN
SID

Apt Elev
1506
Trans alt: 6000

KUDEX 1C [KUDEX1C]
NOLSA 1C [NOLS1C]
TURPU 2C [TURP2C]
RWY 33 DEPARTURES



These SIDs require a minimum climb gradient of
KUDEX & NOLSA 1C: 5.0% up to 4000.
TURPU 2C: 5.0% up to FL100.

Gnd speed-KT	75	100	150	200	250	300
5.0% V/V (fpm)	380	506	760	1013	1266	1519

SID	ROUTING
KUDEX 1C	Climb on runway heading to SUPOS, turn LEFT, along D10.0 Arc PPN, when passing PPN R280 turn RIGHT, intercept PPN R271 to KUDEX.
NOLSA 1C	Climb on runway heading to SUPOS, turn LEFT, along D10.0 Arc PPN, when passing PPN R313 turn LEFT, intercept PPN R303 inbound to PPN, PPN R207 to NOLSA.
TURPU 2C	Climb on runway heading to SUPOS, turn LEFT, along D10.0 Arc PPN, when passing PPN R313 turn LEFT, intercept PPN R303 inbound to PPN, PPN R116 to TURPU.

LEPP/PNA

JEPPesen

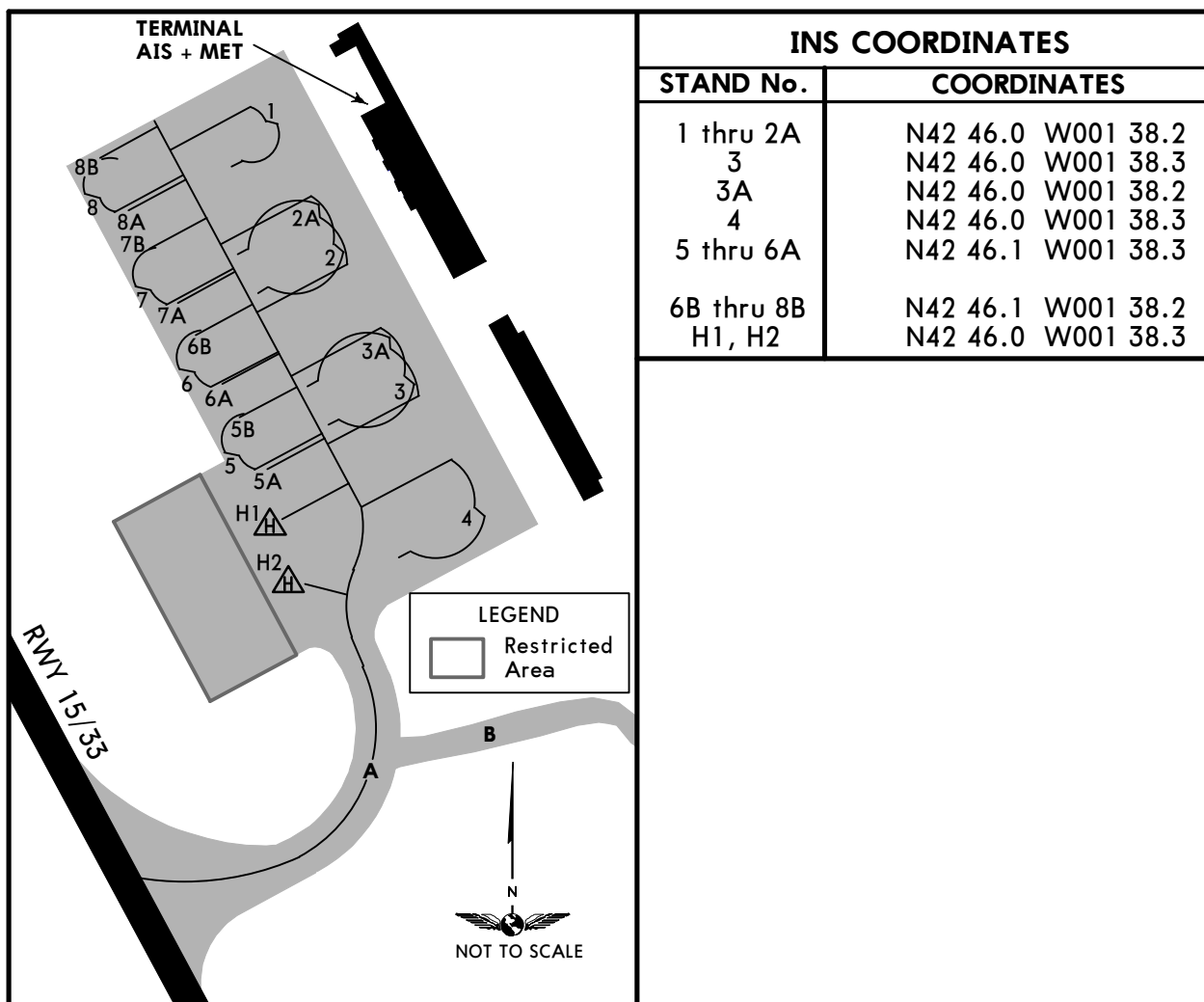
PAMPLONA, SPAIN

1 SEP 17

10-9A

Eff 14 Sep

PAMPLONA



STANDSTILL OF OPERATIONS IN THE MOVEMENT AREA PROCEDURE (PPOAM)

1. General

- Phase I: When RVR is less than 800m, warning on operations.
- Phase II: When RVR is less than 550m, landings not authorized.
- Phase III: When RVR is less than 400m, standstill of operations.
- Phase IV: When RVR is equal to or more than 400m, resumption of take-offs.
- Phase V: When RVR is equal to or more than 550m, cancellation of restrictions.

2. Uncertainty regarding the position on the manoeuvring area.

- If a pilot doubts about the position of the ACFT relative to the manoeuvring area
 - and it is recognized that the ACFT is not on RWY:
The pilot shall immediately stop the ACFT and shall notify this to ATC (including the last known position).
 - and it is recognized that ACFT is on RWY:
The pilot shall immediately notify this to ATC (including the last known position), evacuate the RWY as soon as possible over an appropriate TWY, unless ATC stated otherwise; and then stop the ACFT.

3. Failure of an ACFT

Notify the situation to ATC and wait for the arrival of assistance. In case of the ACFT is on a RWY, if possible and unless ATC indicates otherwise, pilot shall evacuate the RWY.

4. Loss of visual contact between traffics.

In case of lost of visual contact with another ACFT or a vehicle with it's own separation maintained, ATC shall be informed immediately and the ACFT shall stop.

5. Communications failure

Arriving ACFT: If the ACFT just landed, it shall maintain position when leaving the RWY and shall wait for the arrival of an assistance vehicle.

If the ACFT already has a taxiing ATC clearance, it shall continue on the assigned route to the limit of such authorization, exercising extreme caution, where it shall maintain position and shall wait for the arrival of an assistance vehicle.

Departing ACFT: The ACFT shall continue on the assigned route and shall stop at the limit of the ATC clearance, exercising extreme caution, where it shall maintain position and shall wait for the arrival of an assistance vehicle.

OPERATIONAL AVAILABILITY

The operational availability of ILS X or LOC X Rwy 15 (11-3), VOR A Rwy 33 (13-1), VOR B Rwy 33 (13-2), VOR C Rwy 33 (13-3) and VOR D Rwy 33 (13-4) is limited to a previous real approach in VMC or an approved simulator.

LEPP/PNA PAMPLONA

JEPPESEN
2 DEC 16
Eff 8 Dec (11-1)

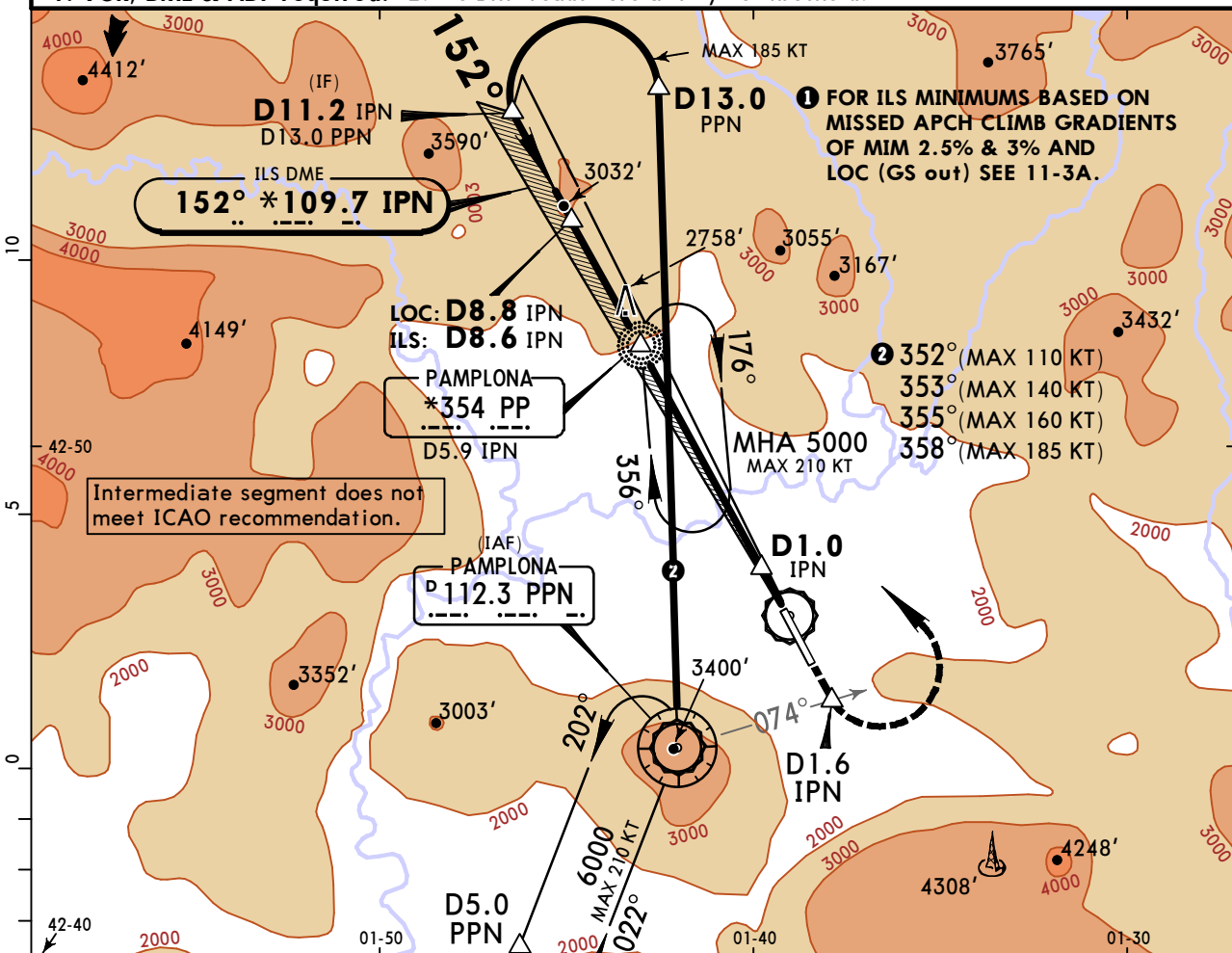
PAMPLONA, SPAIN ILS Z or LOC Z Rwy 15

Approach Control through Tower *PAMPLONA Tower 118.2			*Ground 121.7		
LOC IPN *109.7	Final Apch Crs 152°	GS D5.9 IPN 3687' (2220')	ILS DA(H) Refer to Minimums	Apt Elev 1506' Rwy 1467'	

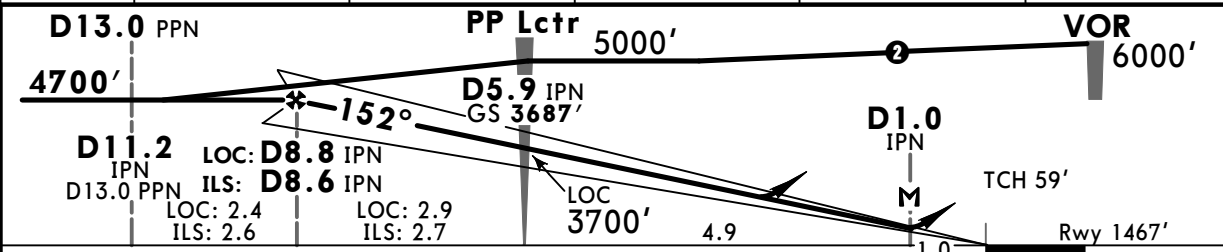
MISSED APCH: Climb on RWY heading to D1.6 IPN/R-074 PPN, then turn LEFT (CAT C: MAX 175 KT, CAT D: MAX 185 KT) to cross PP Lctr at or above 4000'. Climb to 5000' and join holding.

Alt Set: hPa Rwy Elev: 53 hPa Trans level: By ATC Trans alt: 6000'

1. VOR, DME & ADF required. 2. ILS DME reads zero at rwy 15 threshold.

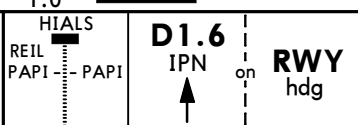


LOC (GS out)	IPN DME ALTITUDE	8.0 4460'	7.0 4090'	6.0 3730'	5.0 3360'
--------------	------------------	--------------	--------------	--------------	--------------



Gnd speed-Kts	70	90	100	120	140	160	
ILS GS	3.40°	426	548	609	731	853	974
LOC Descent Angle	3.46°	429	551	612	735	857	980

MAP at D1.0 IPN



	STRAIGHT-IN LANDING RWY 15 ILS			CIRCLE-TO-LAND after ILS	
	FULL	Limited	ALS out	Max Kts	MDA(H) VIS
Standard	Missed apch climb gradient mim 4.5%			Not authorized West of rwy	
	DA(H) A: 1810'(343') C: 1830 (363') B: 1822'(355') D: 1870'(403')				
PANS OPS					
A				100	3100'(1594') 1500m
B	RVR 900m		RVR 1500m	135	3100'(1594') 1600m
C	RVR 1000m		RVR 1700m	180	3620'(2114') 2400m
D	RVR 1200m		RVR 1900m	205	4700'(3194') 3600m

CHANGES: Note added.

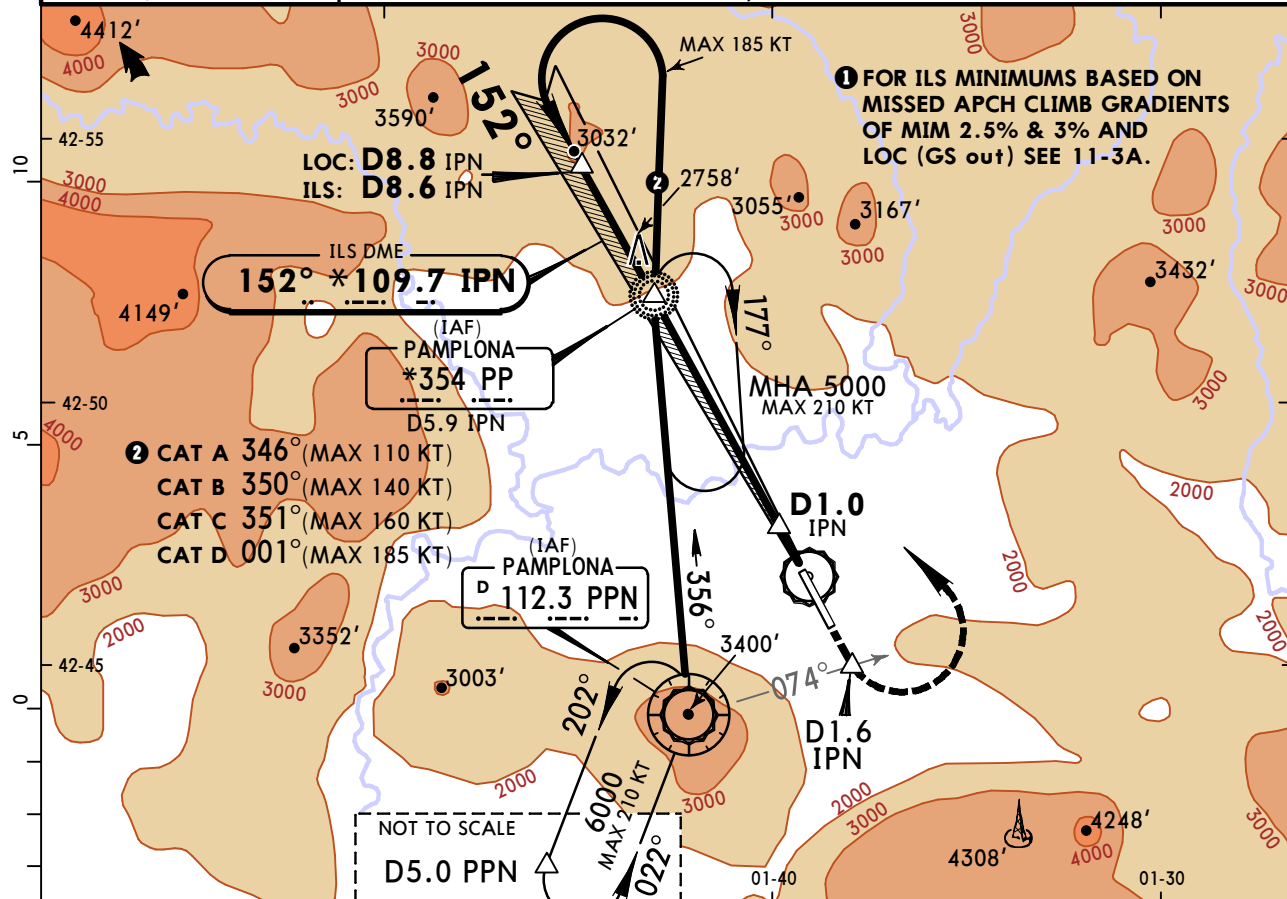
LEPP/PNA PAMPLONA

JEPPESSEN
2 DEC 16
Eff 8 Dec
11-2

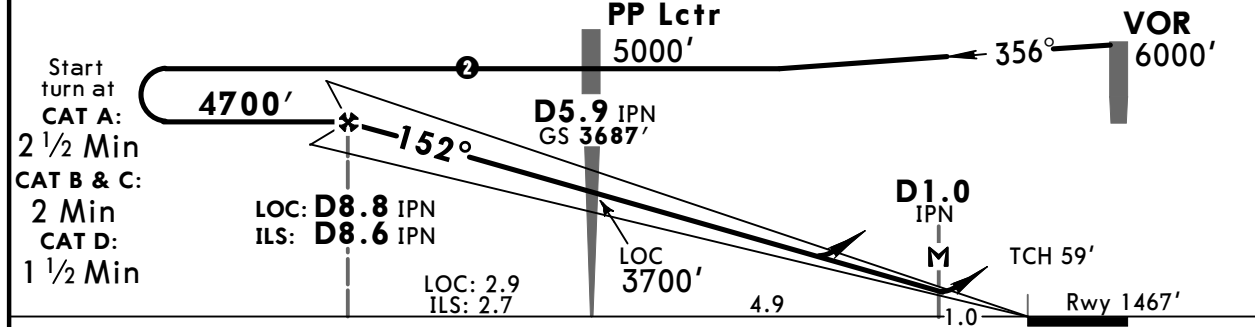
PAMPLONA, SPAIN

● ILS Y or LOC Y Rwy 15

Approach Control through Tower *PAMPLONA Tower 118.2			*Ground 121.7		
LOC IPN *109.7	Final Apch Crs 152°	GS D5.9 IPN 3687' (2220')	ILS DA(H) Refer to Minimums	Apt Elev 1506' Rwy 1467'	
MISSED APCH: Climb on RWY heading to D1.6 IPN/R-074 PPN, then turn LEFT (CAT C: MAX 175 KT, CAT D: MAX 185 KT) to cross PP Lctr at or above 4000'. Climb to 5000' and join holding.					MSA PP Lctr
Alt Set: hPa Rwy Elev: 53 hPa Trans level: By ATC 1. VOR, DME & ADF required. 2. ILS DME reads zero at rwy 15 threshold.					



LOC (GS out)	IPN DME	8.0	7.0	6.0	5.0
	ALTITUDE	4460'	4090'	3730'	3360'



Gnd speed-Kts	70	90	100	120	140	160	HI ALS REIL PAPI - PAPI D1.6 IPN on Rwy hdg
ILS GS	3.40°	426	548	609	731	853	
LOC Descent Angle	3.46°	429	551	612	735	857	980
MAP at D1.0 IPN							

PANS OPS	Standard STRAIGHT-IN LANDING RWY 15				CIRCLE-TO-LAND after ILS	
	ILS Missed apch climb gradient mim 4.5% DA(H) A: 1810' (343') C: 1830' (363') B: 1822' (355') D: 1870' (403')				Not authorized West of rwy	
		FULL	Limited	ALS out	Max Kts	MDA(H) VIS
	A				100	3100' (1594') 1500m
	B	RVR 900m		RVR 1500m	135	3100' (1594') 1600m
C	RVR 1000m		RVR 1700m	180	3620' (2114') 2400m	
D	RVR 1200m		RVR 1900m	205	4700' (3194') 3600m	

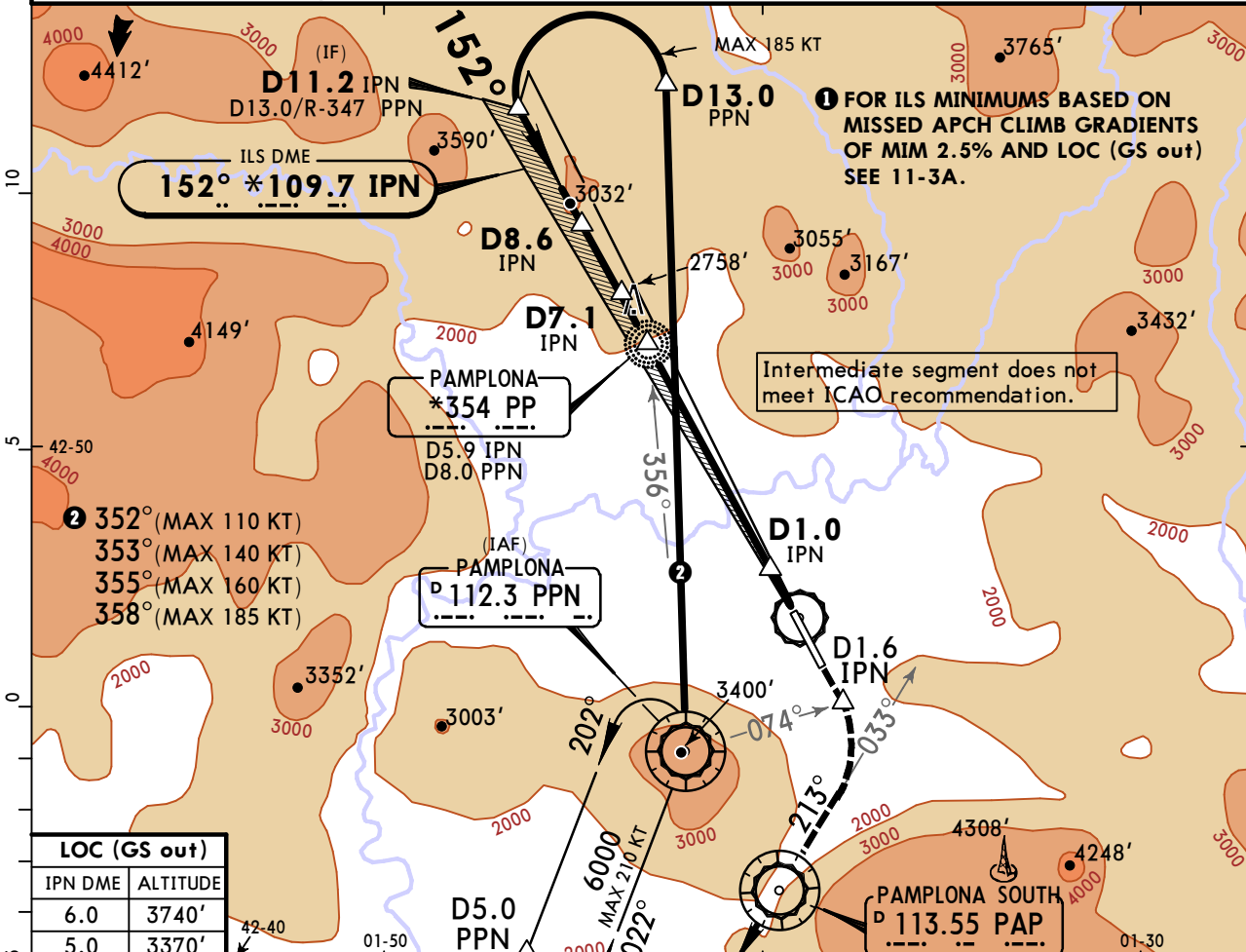
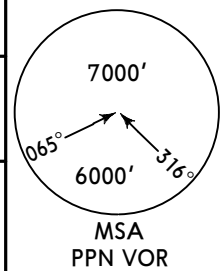
LEPP/PNA PAMPLONA

JEPPESSEN
2 DEC 16
Eff 8 Dec (11-3)

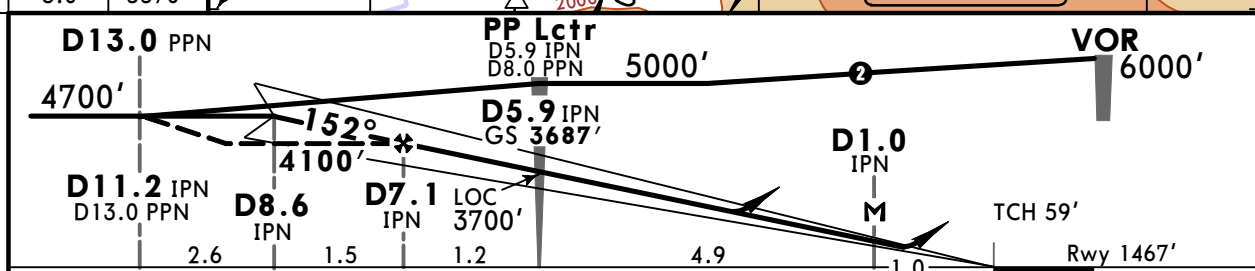
PAMPLONA, SPAIN

ILS X or LOC X Rwy 15

Approach Control through Tower *PAMPLONA Tower 118.2		*Ground 121.7		
LOC IPN *109.7	Final Apch Crs 152°	GS D5.9 IPN 3687' (2220')	ILS DA(H) Refer to Minimums	Apt Elev 1506' Rwy 1467'
MISSED APCH: Climb on RWY heading to D1.6 IPN/R-074 PPN, then turn RIGHT (CAT C: MAX 160 KT, CAT D: MAX 185 KT) to intercept R-033 inbound to PAP VOR. Climb on R-213 PAP to 4500', then turn RIGHT (MAX 185 KT) to PPN VOR climbing to 6000' and join holding.				
Alt Set: hPa		Rwy Elev: 53 hPa	Trans level: By ATC	
1. VOR, DME & ADF required.		2. ILS DME reads zero at rwy 15 threshold.		Trans alt: 6000'



LOC (GS out)	
IPN DME	ALTITUDE
6.0	3740'
5.0	3370'



Gnd speed-Kts	70	90	100	120	140	160	HIALS REIL PAPI PAPI	D1.6 IPN on RWY hdg	
ILS GS	3.40°	426	548	609	731	853			974
LOC Descent Angle	3.48°	431	554	616	739	862			985
MAP at D1.0 IPN									

PANS OPS	Standard STRAIGHT-IN LANDING RWY 15 ILS			CIRCLE-TO-LAND after ILS	
	Missed apch climb gradient mim 4.5%				
	DA(H) A: 1669' (202') C: 1689' (222') B: 1681' (214') D: 2162' (695')				
	FULL	Limited	ALS out	Max Kts	MDA(H) VIS
A				100	3100' (1594') 1500m
B	RVR 550m	RVR 750m	RVR 1200m	135	3100' (1594') 1600m
C				180	3620' (2114') 2400m
D		CMV 2400m		205	4700' (3194') 3600m

ILS Z Rwy 15 MINIMUMS
ILS Y Rwy 15 MINIMUMS

MISSED APCH CLIMB GRADIENT MIM 3.0%

Standard		STRAIGHT-IN LANDING RWY 15		
		ILS		
DA(H)	A: 2129' (662')	C: 2151' (684')		
	B: 2142' (675')	D: 2195' (728')		
	FULL	Limited	ALS out	
A	RVR 1500m			
B				
C	CMV 2400m			
D				

MISSED APCH CLIMB GRADIENT MIM 2.5%

Standard		STRAIGHT-IN LANDING RWY 15		
		ILS		
DA(H)	A: 2266' (799')	C: 2288' (821')		
	B: 2279' (812')	D: 2330' (863')		
	FULL	Limited	ALS out	
A	RVR 1500m			
B				
C	CMV 2400m			
D				

ILS X Rwy 15 MINIMUMS

MISSED APCH CLIMB GRADIENT MIM 2.5%

Standard		STRAIGHT-IN LANDING RWY 15		
		ILS		
DA(H)	A: 2069' (602')	C: 2089' (622')		
	B: 2081' (614')	D: 2785' (1318')		
	FULL	Limited	ALS out	
A	RVR 1500m			
B				
C	CMV 2200m	CMV 2400m		
D	CMV 2400m			

LOC (GS out) Z, Y, X Rwy 15 MINIMUMS

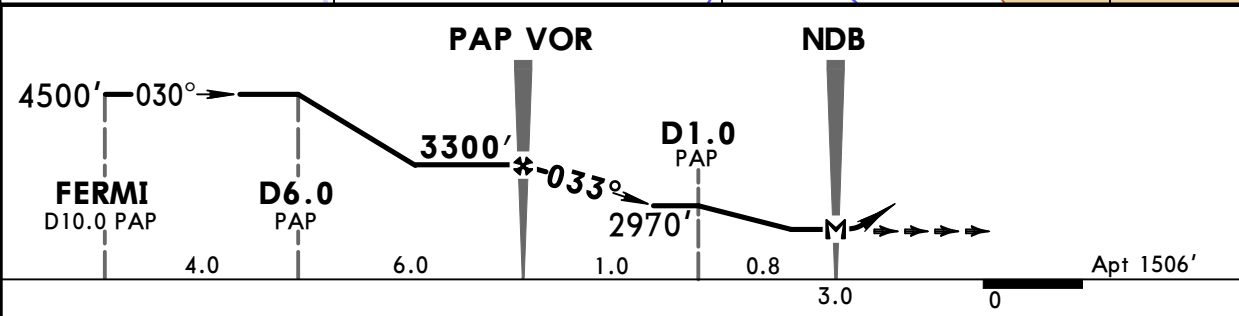
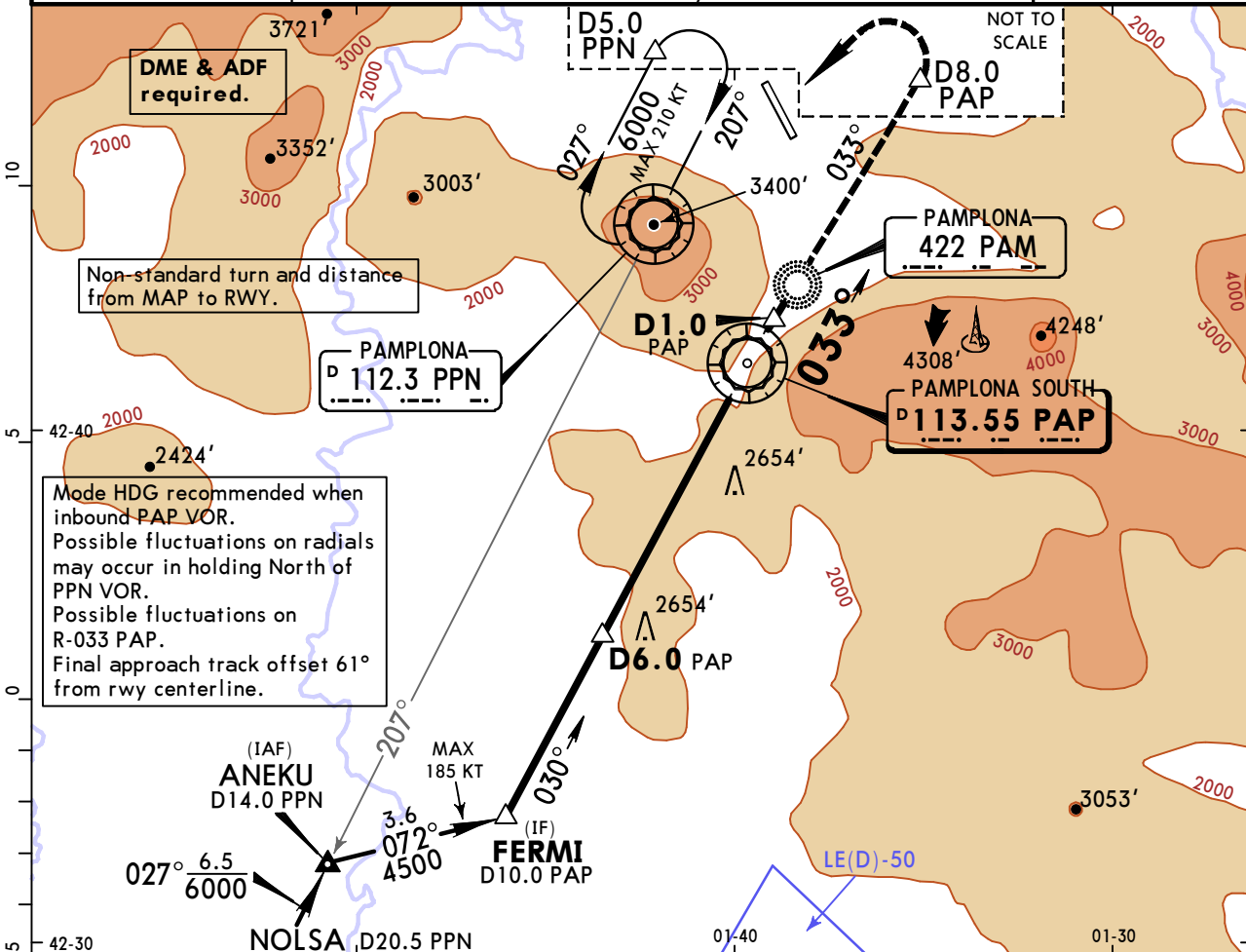
Standard		STRAIGHT-IN LANDING RWY 15		CIRCLE-TO-LAND after LOC (GS out)	
		LOC (GS out)		Not authorized West of rwy	
DA(H)	3100' (1633')	Max Kts		MDA(H)	VIS
	ALS out	100	3140' (1634')	5000m	
A	CMV 5000m				
B			180	3620' (2114')	5000m
C			205	4700' (3194')	5000m
D					

LEPP/PNA PAMPLONA

JEPPESEN
2 DEC 16
Eff 8 Dec **13-2** CAT A, B & C

PAMPLONA, SPAIN VOR B

Approach Control through Tower *PAMPLONA Tower 118.2				*Ground 121.7	
VOR PAP 113.55	Final Apch Crs 033°	Minimum Alt PAP VOR 3300' (1794')	MDA(H) Refer to Minimums	Apt Elev 1506'	
MISSED APCH: Climb on R-033 PAP VOR to 4300' or D8.0 PAP, whichever is earlier, then climbing turn LEFT (MAX 185 KT) to PPN VOR and join holding at 6000'.					
Alt Set: hPa		Apt Elev: 54 hPa	Trans level: By ATC	Trans alt: 6000'	



MAP at NDB	Lighting - Refer to Airport Chart	PAP 113.55 R-033	4300'	D8.0 PAP ↑ whichever is earlier ↑
------------	-----------------------------------	-------------------------------	--------------	--

Standard STRAIGHT-IN LANDING		CIRCLE-TO-LAND Not authorized West of rwy				
		Missed apch climb gradient mim 4.5%		Missed apch climb gradient mim 2.5%		
PANS OPS	A	Max Kts	MDA(H)	VIS	MDA(H)	VIS
	B		2500' (994')	1500m	3300' (1794')	1500m
	C		2600' (1094')	1600m	3300' (1794')	1600m
	D		3100' (1594')	2400m	3300' (1794')	2400m
D		NOT APPLICABLE				

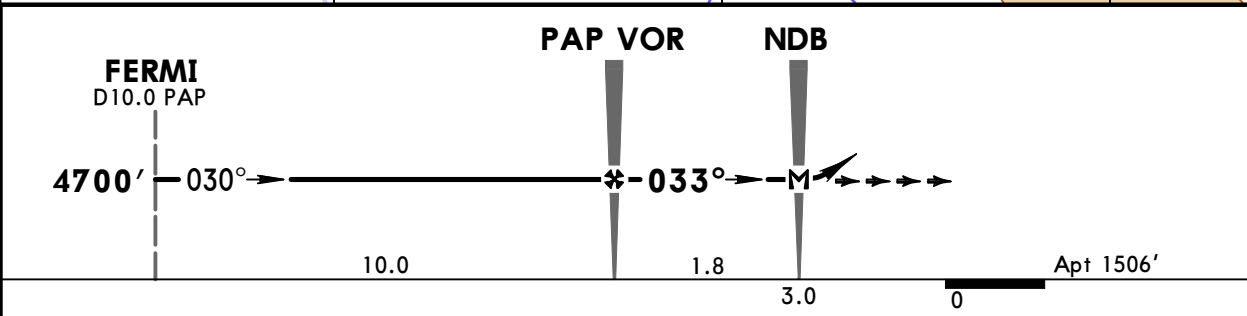
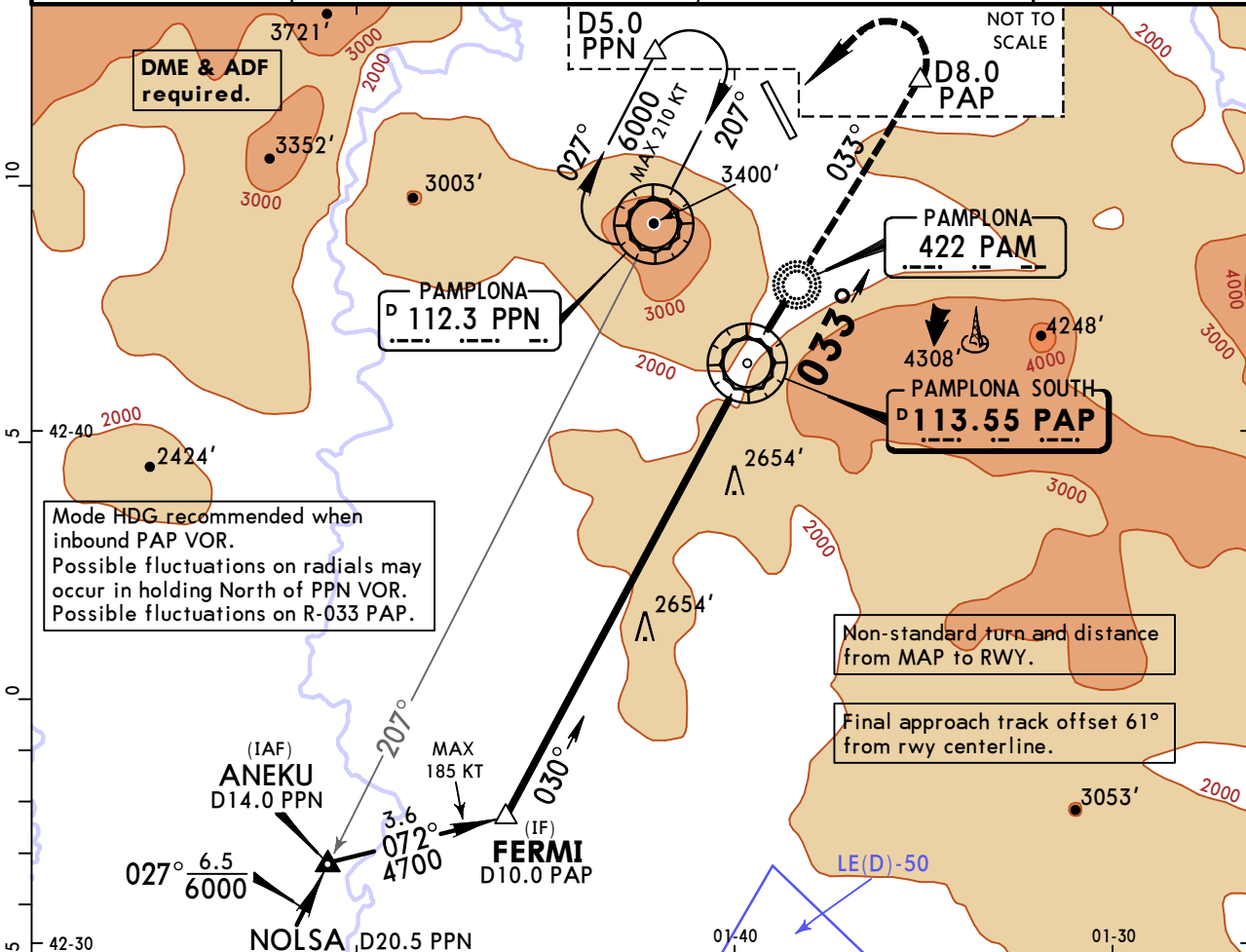
Remain within 3.5 NM.

LEPP/PNA PAMPLONA

JEPPesen
2 DEC 16
Eff 8 Dec **13-3** CAT D

PAMPLONA, SPAIN VOR C

Approach Control through Tower *PAMPLONA Tower 118.2				*Ground 121.7	
VOR PAP 113.55	Final Apch Crs 033°	Minimum Alt PAP VOR 4700' (3194')	MDA(H) 4700' (3194')	Apt Elev 1506'	
MISSED APCH: Climb on R-033 PAP VOR to D8.0 PAP, then climbing turn LEFT (MAX 185 KT) to PPN VOR and join holding at 6000'.					
Alt Set: hPa	Apt Elev: 54 hPa	Trans level: By ATC	Trans alt: 6000'	MSA PPN VOR	



MAP at NDB	Lighting - Refer to Airport Chart	D8.0 PAP on 113.55 R-033
------------	-----------------------------------	--

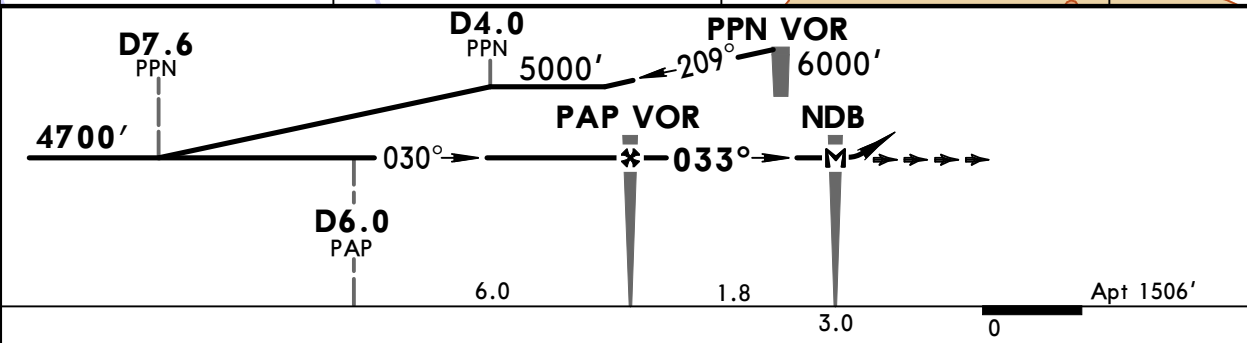
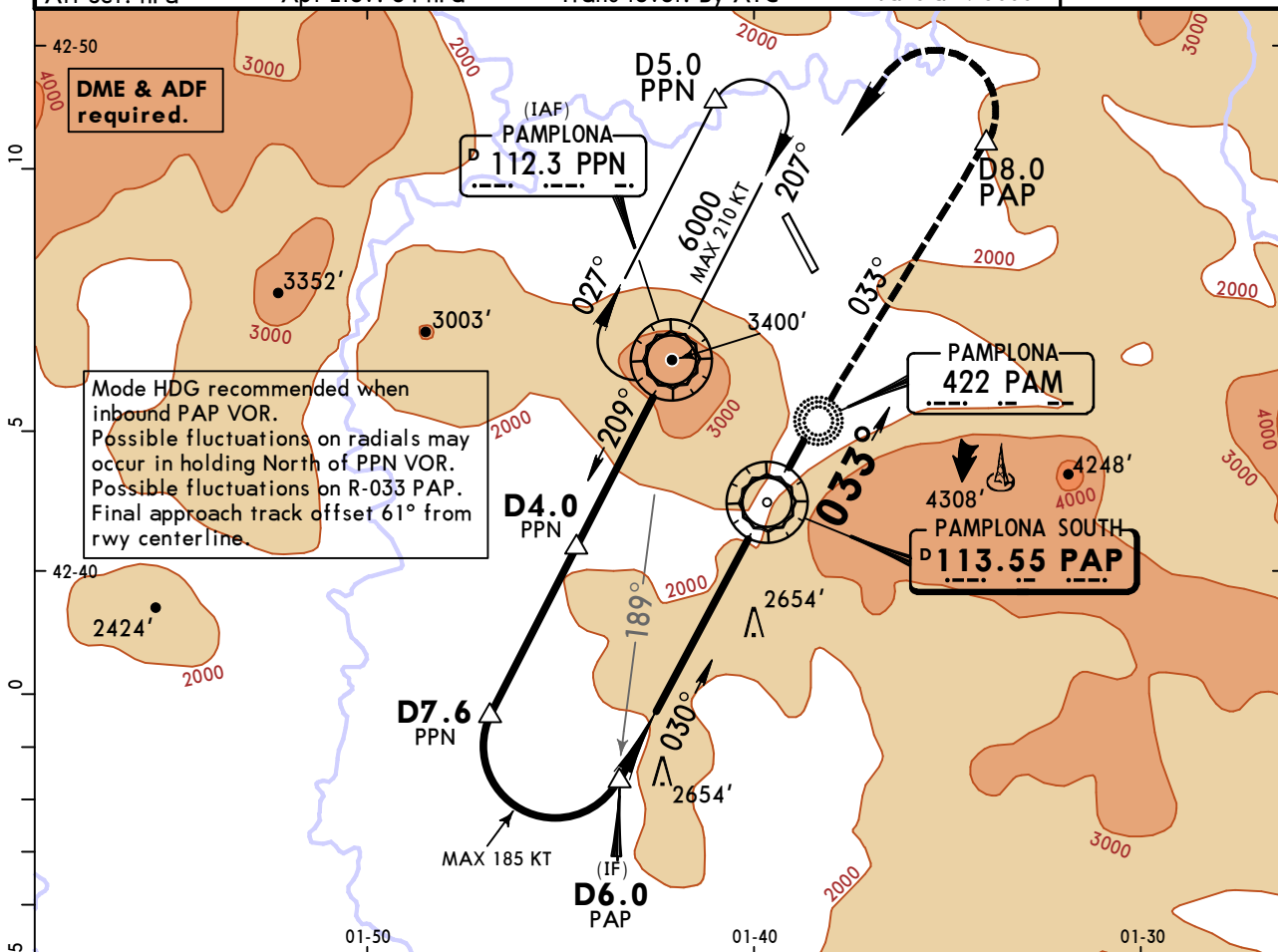
Standard STRAIGHT-IN LANDING		CIRCLE-TO-LAND	
NOT AUTHORIZED		Not authorized West of rwy	
A		Max Kts	MDA(H) _____ VIS _____
B		B	NOT APPLICABLE
C		C	
D		205	4700' (3194') 3600m

LEPP/PNA
PAMPLONA

JEPPesen
2 DEC 16
Eff 8 Dec (13-4) CAT D

PAMPLONA, SPAIN
VOR D

Approach Control through Tower *PAMPLONA Tower 118.2				*Ground 121.7	
VOR PAP 113.55	Final Apch Crs 033°	Minimum Alt PAP VOR 4700' (3194')	MDA(H) 4700' (3194')	Apt Elev 1506'	
MISSED APCH: Climb on R-033 PAP VOR to D8.0 PAP, then climbing turn LEFT (MAX 185 KT) to PPN VOR and join holding at 6000'.					
Alt Set: hPa		Apt Elev: 54 hPa	Trans level: By ATC	Trans alt: 6000'	



MAP at NDB	Lighting - Refer to Airport Chart	D8.0 PAP on 113.55 R-033
------------	-----------------------------------	--

Standard		STRAIGHT-IN LANDING		CIRCLE-TO-LAND	
				Not authorized West of rwy	
				Max Kts _____ MDA(H) _____ VIS _____	
A					
B					NOT APPLICABLE
C					
D	NOT AUTHORIZED		205		4700' (3194') 3600m

PAMPLONA

19-2 02 SEP 11

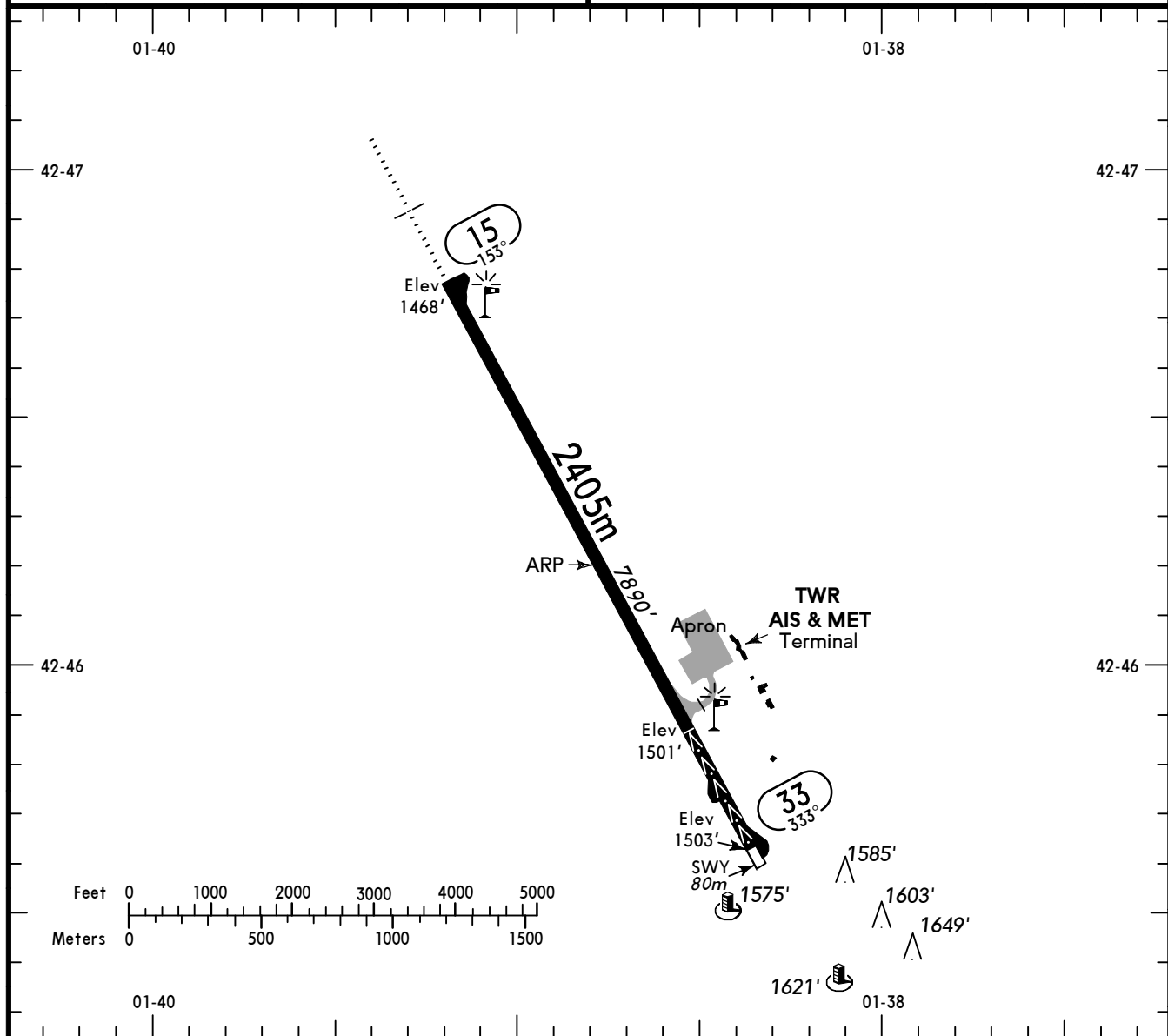


PAMPLONA

SPAIN



PAMPLONA GROUND **121.70**



ALS - PAPI 15 (3.4°), 33 (3°) - THRL - RL - RCLL - TWYL - APRON - WDI.

RWY No	Dimension (m) - Surface	TORA (m)	LDA (m)	Strength	Lights
15	2405 x 45 Asphalt	2205	2405	PCN 55/F/D/W/T	
33		2405	1905		

ACFT inbound to Pamplona AD shall establish radio contact with PAMPLONA TWR when reaching the REPs "N", "E" or "W". Report position and ALT and request clearance to enter the CTR while maintaining MAX 1000' SFC.

ACFT may be required to hold over the points depicted on 19-1, before a clearance to enter the CTR can be issued.
The Final Approach Area is not to be crossed without clearance from TWR.

NOTE:

In case of radio failure, ACFT shall use the inbound corridors maintaining 1000' SFC or below, to the holding E of the AD, expecting light signals from TWR, keeping clear of any possible AD traffic circuit.

Chart changes since cycle 23-2019

ADD = added chart, REV = revised chart, DEL = deleted chart.

ACT	PROCEDURE IDENT	INDEX	REV DATE	EFF DATE
-----	-----------------	-------	----------	----------

PAMPLONA, (PAMPLONA - LEPP)

TERMINAL CHART CHANGE NOTICES

Chart Change Notices for Airport LEPP

Type: Terminal (VFR)
Effectivity: Permanent
Begin Date: Immediately
End Date: No end date

EFF 26 MAY 16 Final APCH area withdrawn.

Type: Terminal (VFR)
Effectivity: Permanent
Begin Date: Immediately
End Date: No end date

TWY B established E of TWY A.

Type: Terminal (VFR)
Effectivity: Permanent
Begin Date: Immediately
End Date: No end date

EFF 21 JUL 16 LDA RWY 15 shortened to 2205m.

Type: Terminal (VFR)
Effectivity: Temporary
Begin Date: Immediately
End Date: Until Further Notice

EFF 01 OCT 19 until APRX 30 SEP 20 Works to level slopes in the strips and RWYs end safety area will be carried out in 4 phases. Caution is advised due to presence of personnel and machinery. Please check current NOTAMs.

Chart Change Notices for Country ESP

Type: Gen Tmnl (VFR)
Effectivity: Permanent
Begin Date: Immediately
End Date: No end date

Information regarding aerodrome Gibraltar is now to be found under country name GIBRALTAR.

Type: Gen Tmnl (VFR)
Effectivity: Permanent
Begin Date: Immediately
End Date: No end date

Information regarding aerodrome Melilla is now to be found under country name MELILLA.

Type: Gen Tmnl (VFR)
Effectivity: Permanent
Begin Date: Immediately
End Date: No end date

Information regarding aerodromes El Berriel, Fuerteventura, Gran Canaria, Hierro, La Gomera, Lanzarote, La Palma, Tenerife North and Tenerife South are now to be found under country name CANARY IS.

Type: Gen Tmnl (VFR)
Effectivity: Permanent
Begin Date: Immediately
End Date: No end date

EFF 28 MAR 19 Upper limit of TMA (D) Galicia chgd to FL 145.

Type: Gen Tmnl (VFR)
Effectivity: Permanent
Begin Date: Immediately
End Date: No end date

EFF 28 MAR 19 Upper limit of TMA (D) Barcelona chgd to FL 145 (EXC sector 3).

Type: Gen Tmnl (VFR)
Effectivity: Permanent
Begin Date: Immediately
End Date: No end date

Seville TMA Area 5 airspace Class chgd to (D) airspace.

Type: Gen Tmnl (VFR)
Effectivity: Permanent
Begin Date: Immediately
End Date: No end date

EFF 19 JUL 18 RMZ (G) established within TMA Palma VFR sectors (with same lateral and vertical limits).

Type: Gen Tmnl (VFR)
Effectivity: Permanent
Begin Date: Immediately
End Date: No end date

Zaragoza TMA: Unless otherwise authorized by the Direcciyn General de Aviacyñ Civil, the use of SSR transponder is compulsory for all aircraft flying within Zaragoza TMA at any level.