

## List of pages in this Trip Kit

Trip Kit Index

Airport Information For HSFS

Terminal Charts For HSFS

Revision Letter For Cycle 16-2023

Change Notices

Notebook

## General Information

Location: EL FASHIR SDN  
ICAO/IATA: HSFS / ELF  
Lat/Long: N13° 36.90', E025° 19.48'  
Elevation: 2402 ft

Airport Use: Public  
Daylight Savings: Not Observed  
UTC Conversion: -2:00 = UTC  
Magnetic Variation: 3.0° E

Fuel Types: Jet A-1  
Customs: Yes  
Airport Type: IFR  
Landing Fee: Yes  
Control Tower: Yes  
Jet Start Unit: No  
LLWS Alert: No  
Beacon: No

Sunrise: 0419 Z  
Sunset: 1548 Z

## Runway Information

Runway: 05  
Length x Width: 9705 ft x 148 ft  
Surface Type: asphalt  
TDZ-Elev: 2384 ft  
Lighting: ALS  
Stopway: 197 ft

Runway: 23  
Length x Width: 9705 ft x 148 ft  
Surface Type: asphalt  
TDZ-Elev: 2402 ft  
Stopway: 197 ft

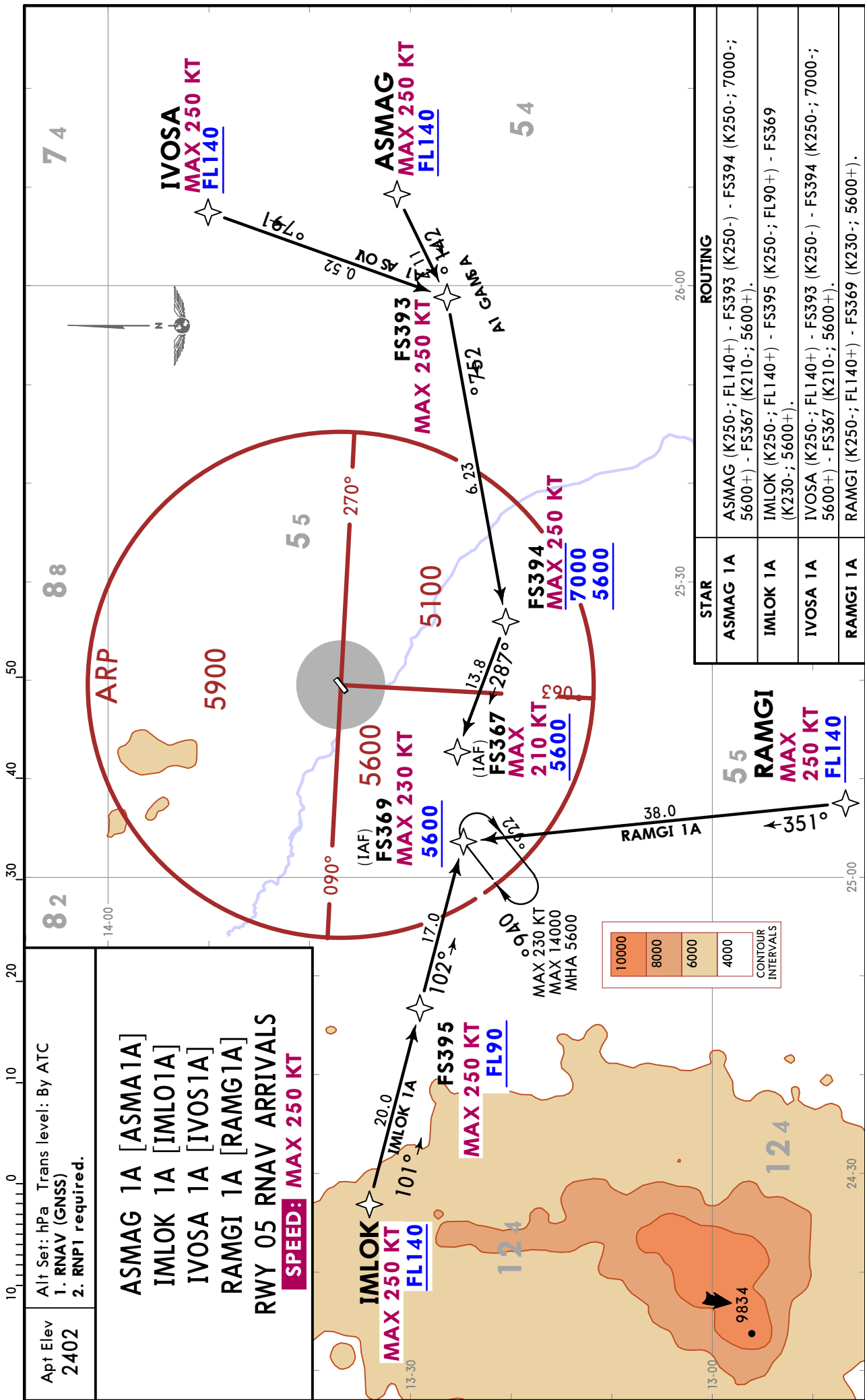
## Communication Information

El Fashir Tower: 118.400  
El Fashir Approach: 118.400

HSFS/ELF  
EL FASHIR

JEPPesen  
7 SEP 18 10-2 Eff 13 Sep

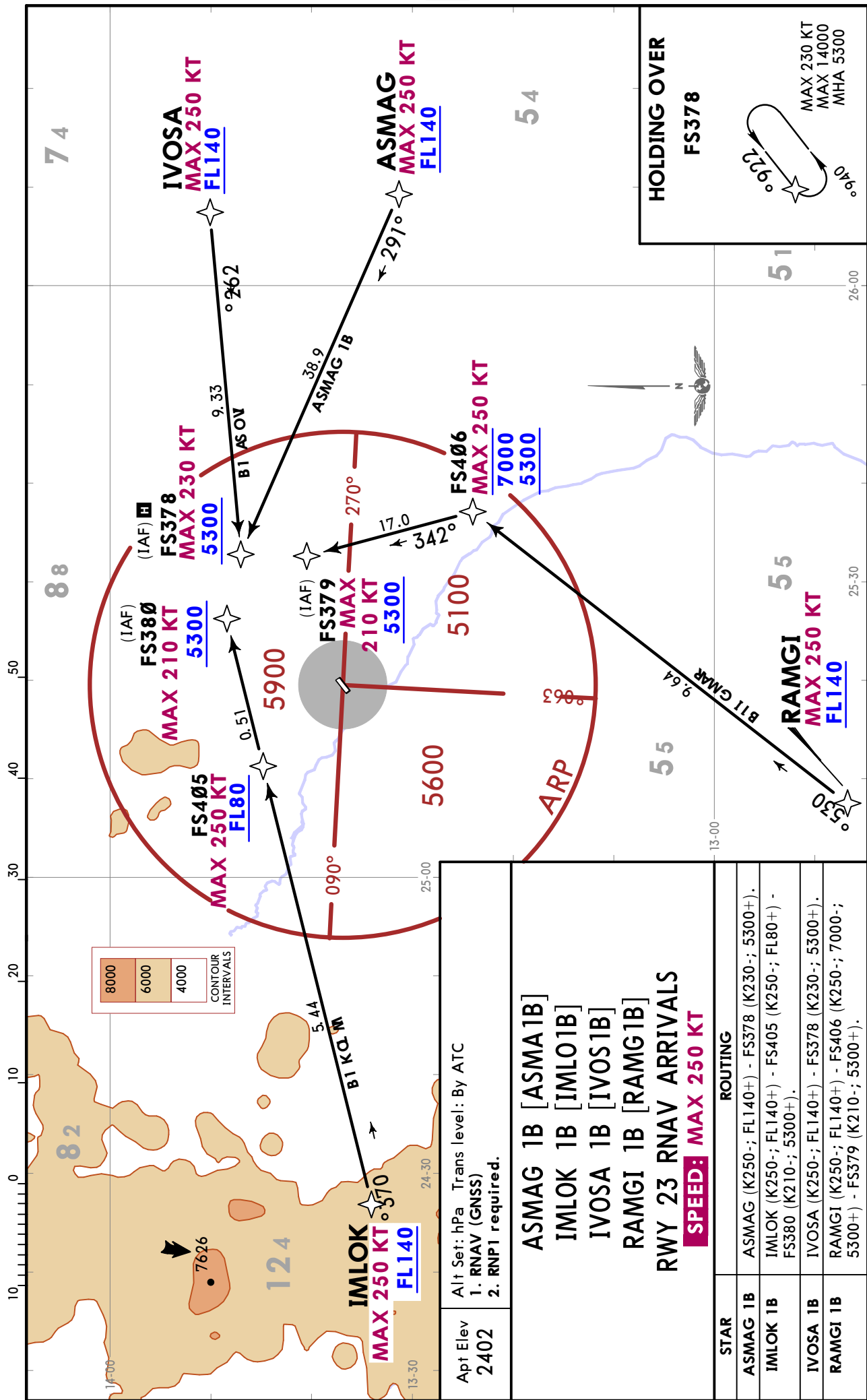
EL FASHIR, SUDAN  
RNAV STAR



HSFS/ELF  
EL FASHIR

JEPPESSEN  
7 SEP 18 (10-2A) Eff 13 Sep

EL FASHIR, SUDAN  
RNAV STAR



8000
6000
4000

CONTOUR INTERVALS

Alt Set: hPa Trans level: By ATC  
1. RNAV (GNSS)  
2. RNP1 required.

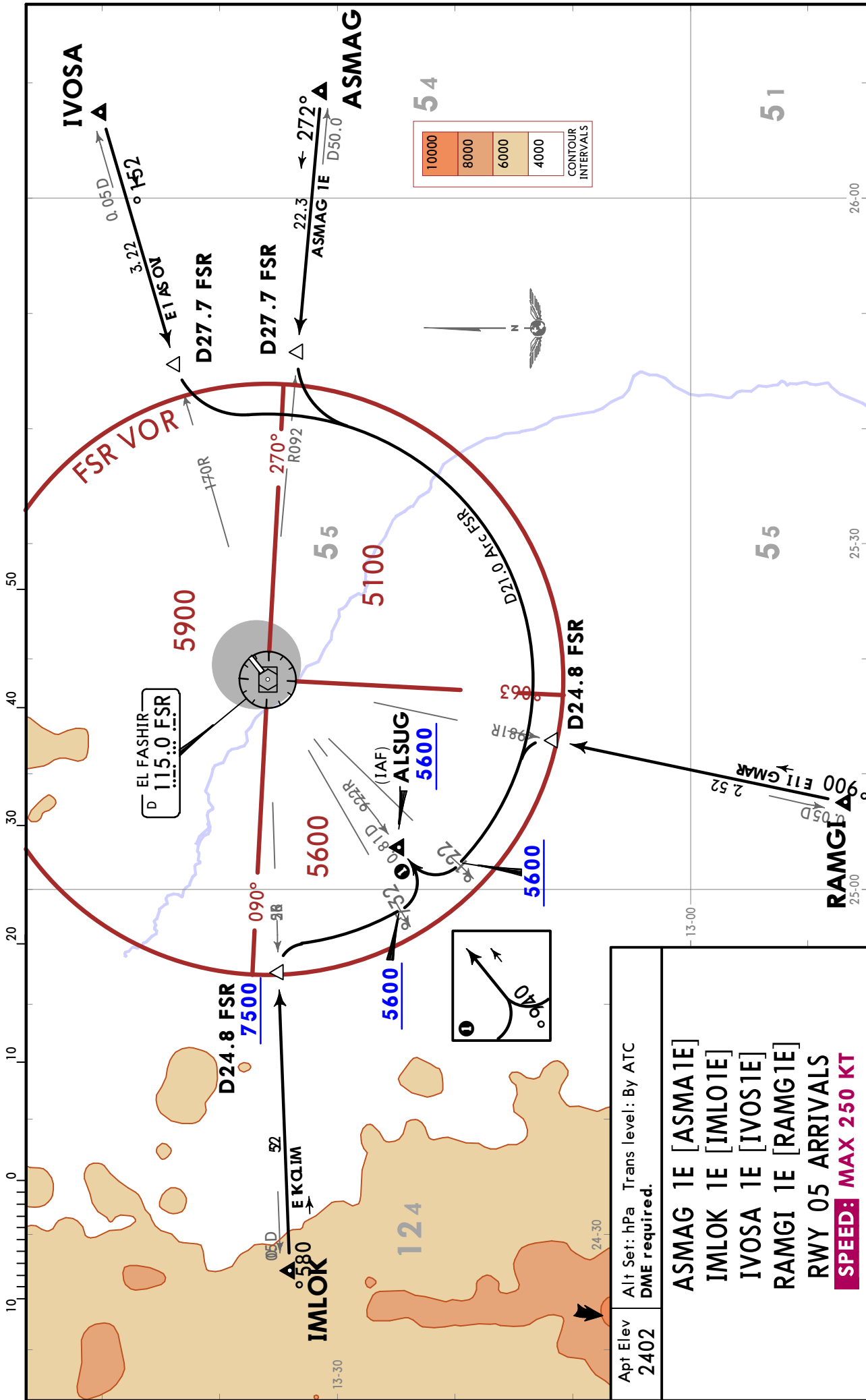
- ASMAG 1B [ASMA1B]
  - IMLOK 1B [IMLO1B]
  - IVOSA 1B [IVOS1B]
  - RAMGI 1B [RAMG1B]
- RWY 23 RNAV ARRIVALS  
**SPEED: MAX 250 KT**

STAR	ROUTING
ASMAG 1B	ASMAG (K250-; FL140+) - FS378 (K230-; 5300+).
IMLOK 1B	IMLOK (K250-; FL140+) - FS405 (K250-; FL80+) - FS380 (K210-; 5300+).
IVOSA 1B	IVOSA (K250-; FL140+) - FS378 (K230-; 5300+).
RAMGI 1B	RAMGI (K250-; FL140+) - FS406 (K250-; 7000-; 5300+) - FS379 (K210-; 5300+).

HSFS/ELF  
EL FASHIR

JEPPESEN  
7 SEP 18 10-2B Eff 13 Sep

EL FASHIR, SUDAN  
STAR



Apt Elev <b>2402</b>	Alt Set: hPa DME required.	Trans level: By ATC
<b>ASMA1E [ASMA1E]</b> <b>IMLO1E [IMLO1E]</b> <b>IVOS1E [IVOS1E]</b> <b>RAMG1E [RAMG1E]</b> <b>RWY 05 ARRIVALS</b> <b>SPEED: MAX 250 KT</b>		

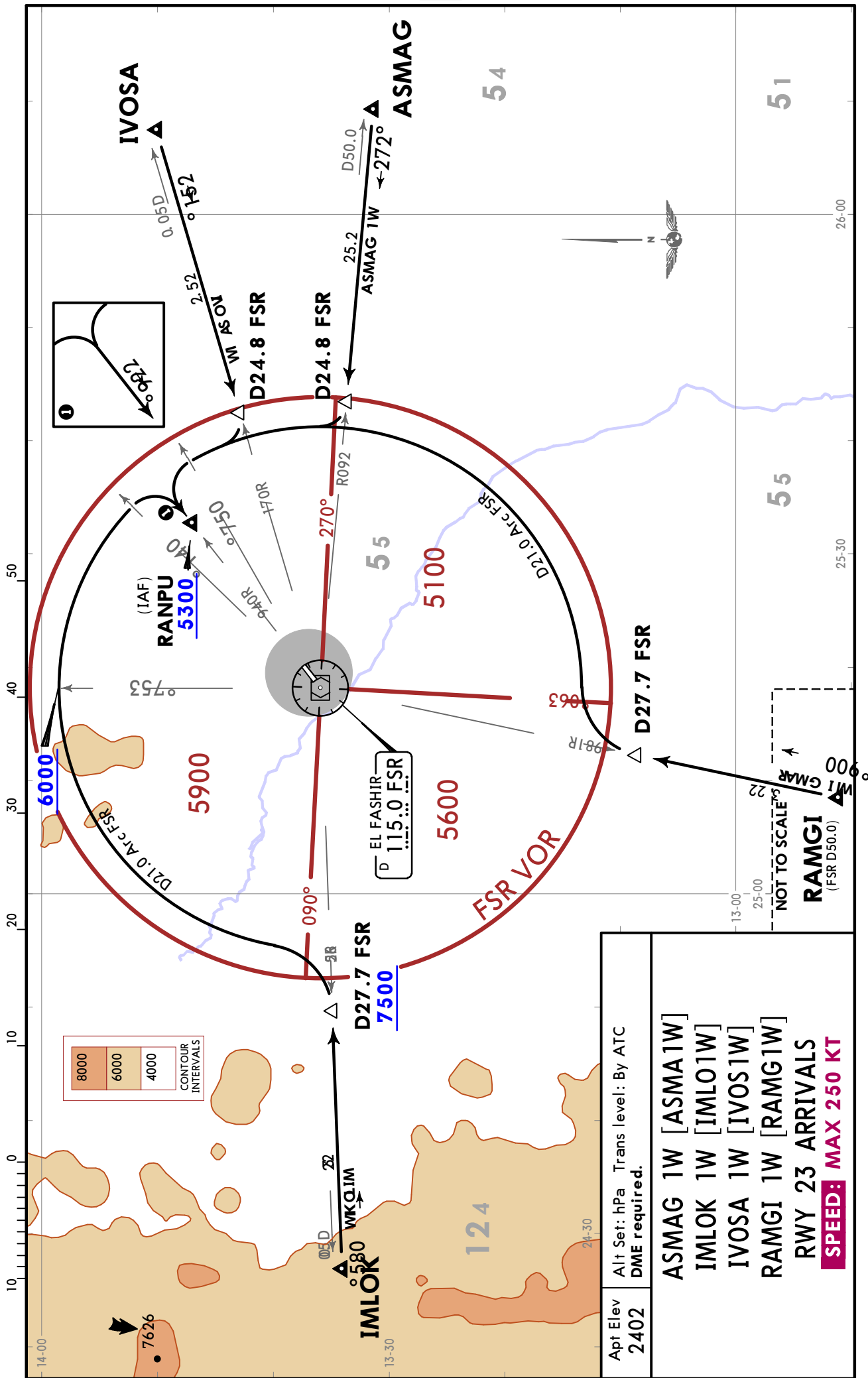
CHANGES: New procedures at this airport.

© JEPPESEN, 2018. ALL RIGHTS RESERVED.

HSFS/ELF  
EL FASHIR

JEPPESEN  
7 SEP 18 10-2C Eff 13 Sep

EL FASHIR, SUDAN  
STAR



Apt Elev <b>2402</b>	Alt Set: hPa DME required.	Trans level: By ATC
<b>ASMA 1W [ASMA1W]</b> <b>IMLO 1W [IMLO1W]</b> <b>IVOSA 1W [IVOS1W]</b> <b>RAMGI 1W [RAMG1W]</b> <b>RWY 23 ARRIVALS</b> <b>SPEED: MAX 250 KT</b>		

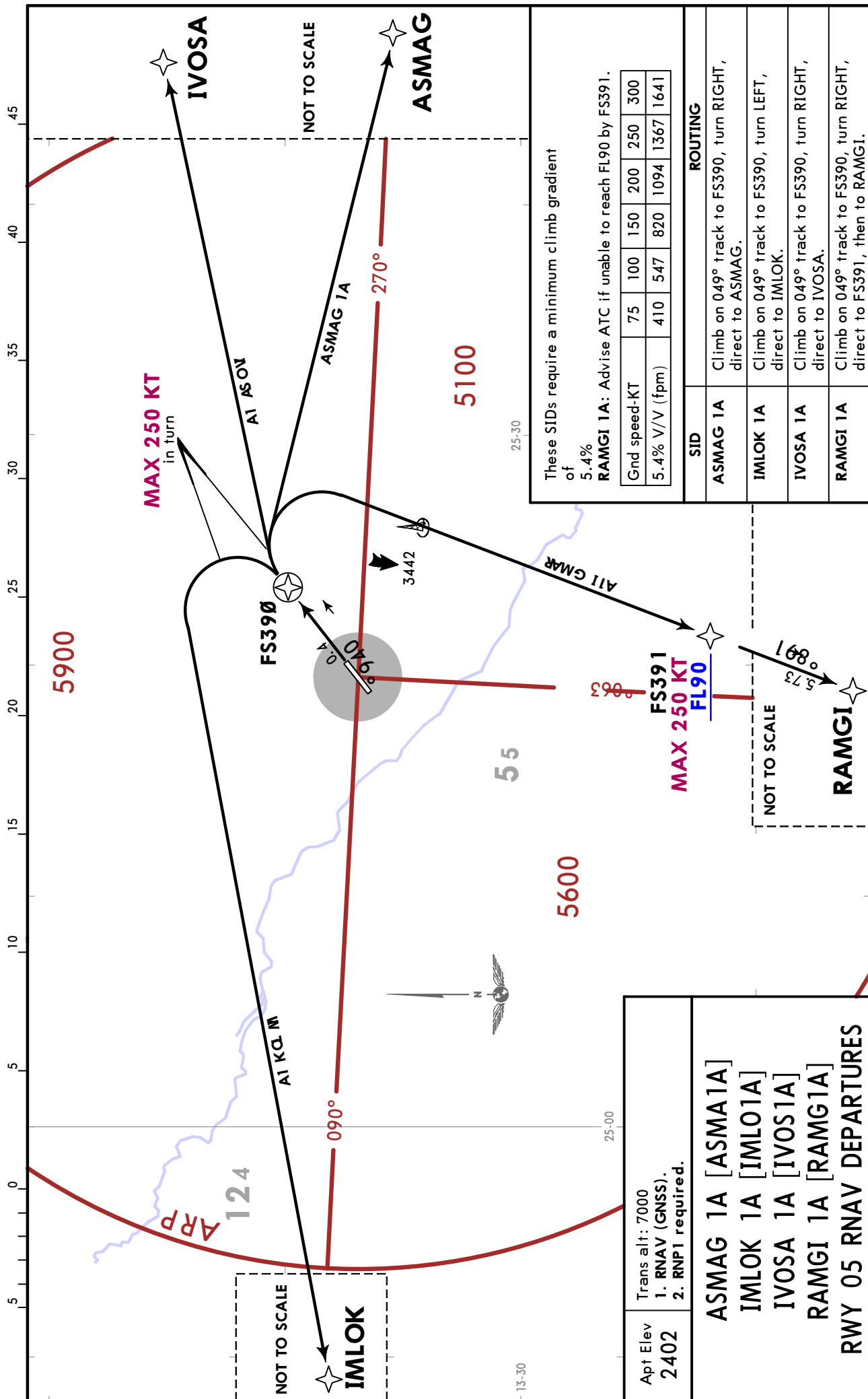
CHANGES: New procedures at this airport.

© JEPPESEN, 2018. ALL RIGHTS RESERVED.

**HSFS/ELF**  
**EL FASHIR**

**JEPESEN**  
7 SEP 18 **10-3** Eff 13 Sep

**EL FASHIR, SUDAN**  
**RNAV SID**



These SIDs require a minimum climb gradient of 5.4%  
**RAMGI 1A:** Advise ATC if unable to reach FL90 by FS391.

Ground speed-KT	75	100	150	200	250	300
5.4% V/V (fpm)	410	547	820	1094	1367	1641

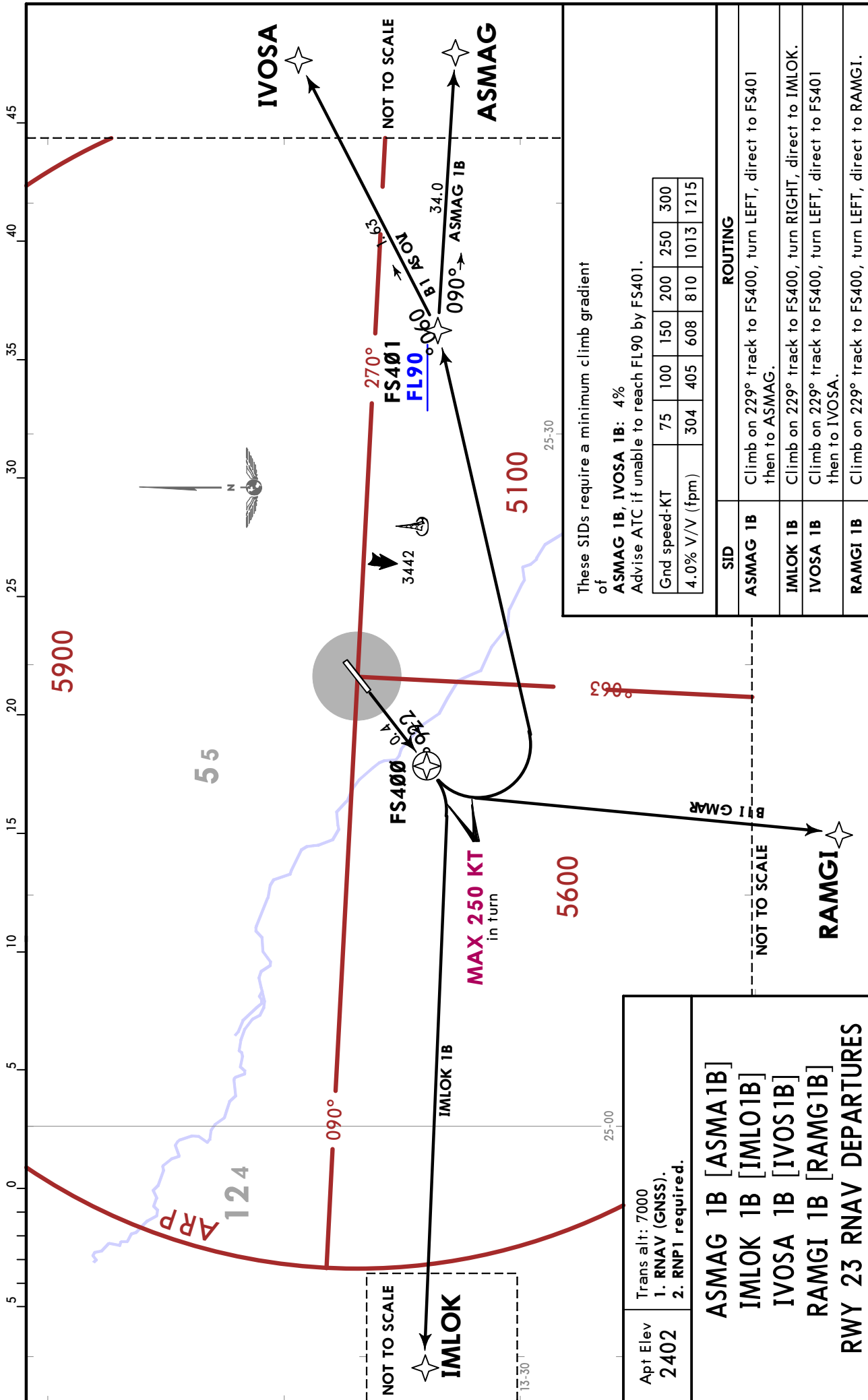
SID	ROUTING
ASMA 1A	Climb on 049° track to FS390, turn RIGHT, direct to ASMA.
IMLOK 1A	Climb on 049° track to FS390, turn LEFT, direct to IMLOK.
IVOSA 1A	Climb on 049° track to FS390, turn RIGHT, direct to IVOSA.
RAMGI 1A	Climb on 049° track to FS390, turn RIGHT, direct to FS391, then to RAMGI.

Apt Elev <b>2402</b>	Trans alt: 7000 1. RNAV (GNSS). 2. RNP1 required.
<b>ASMA 1A [ASMA1A]</b> <b>IMLOK 1A [IMLO1A]</b> <b>IVOSA 1A [IVOS1A]</b> <b>RAMGI 1A [RAMG1A]</b> <b>RWY 05 RNAV DEPARTURES</b>	

HSFS/ELF  
EL FASHIR

JEPPesen  
7 SEP 18 10-3A Eff 13 Sep

EL FASHIR, SUDAN  
RNAV SID



CHANGES: New procedures at this airport.

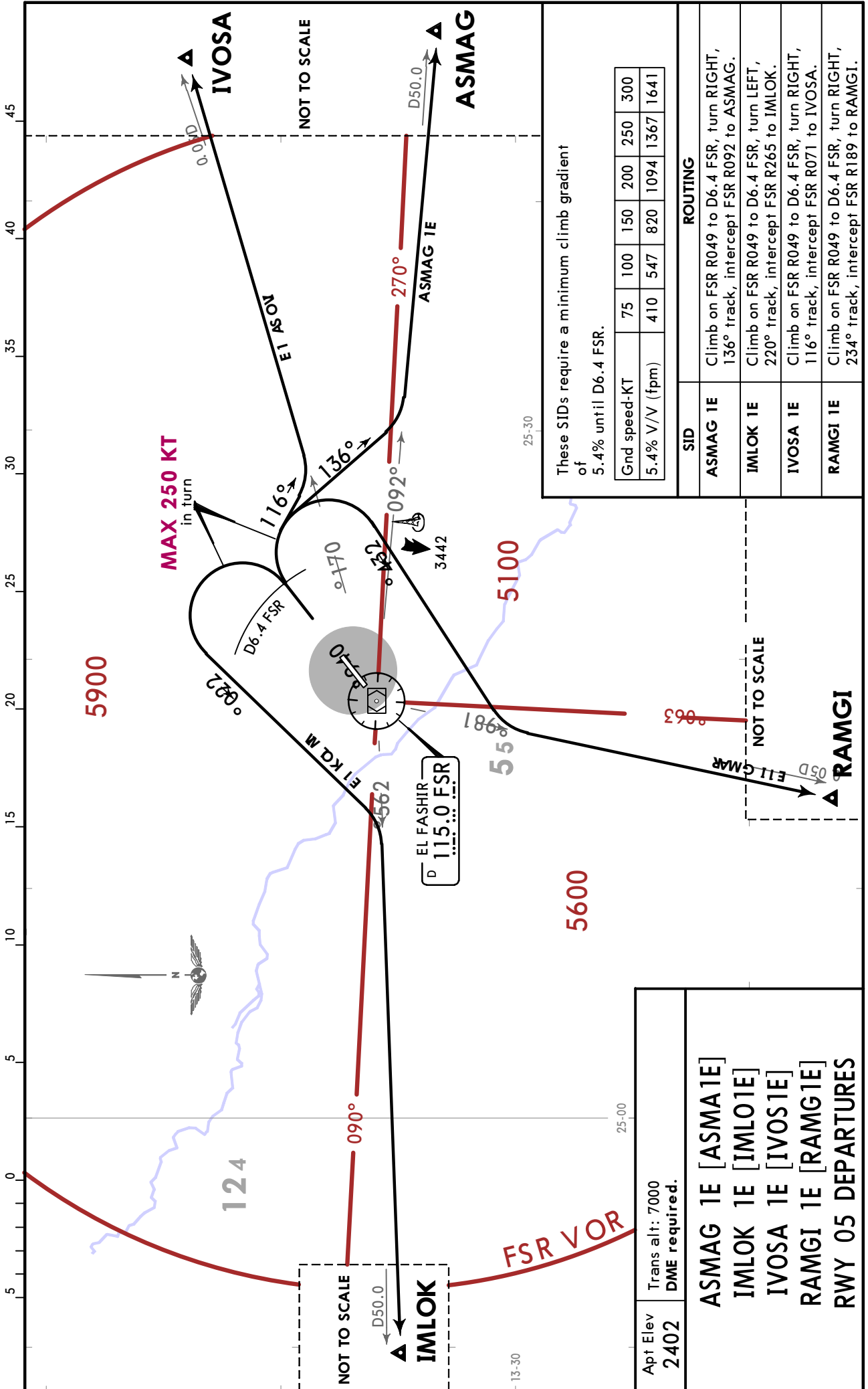
© JEPPesen, 2018. ALL RIGHTS RESERVED.

HSFS/ELF  
EL FASHIR

JEPPesen  
7 SEP 18 (10-3B) Eff 13 Sep

EL FASHIR, SUDAN

SID



CHANGES: New procedures at this airport.

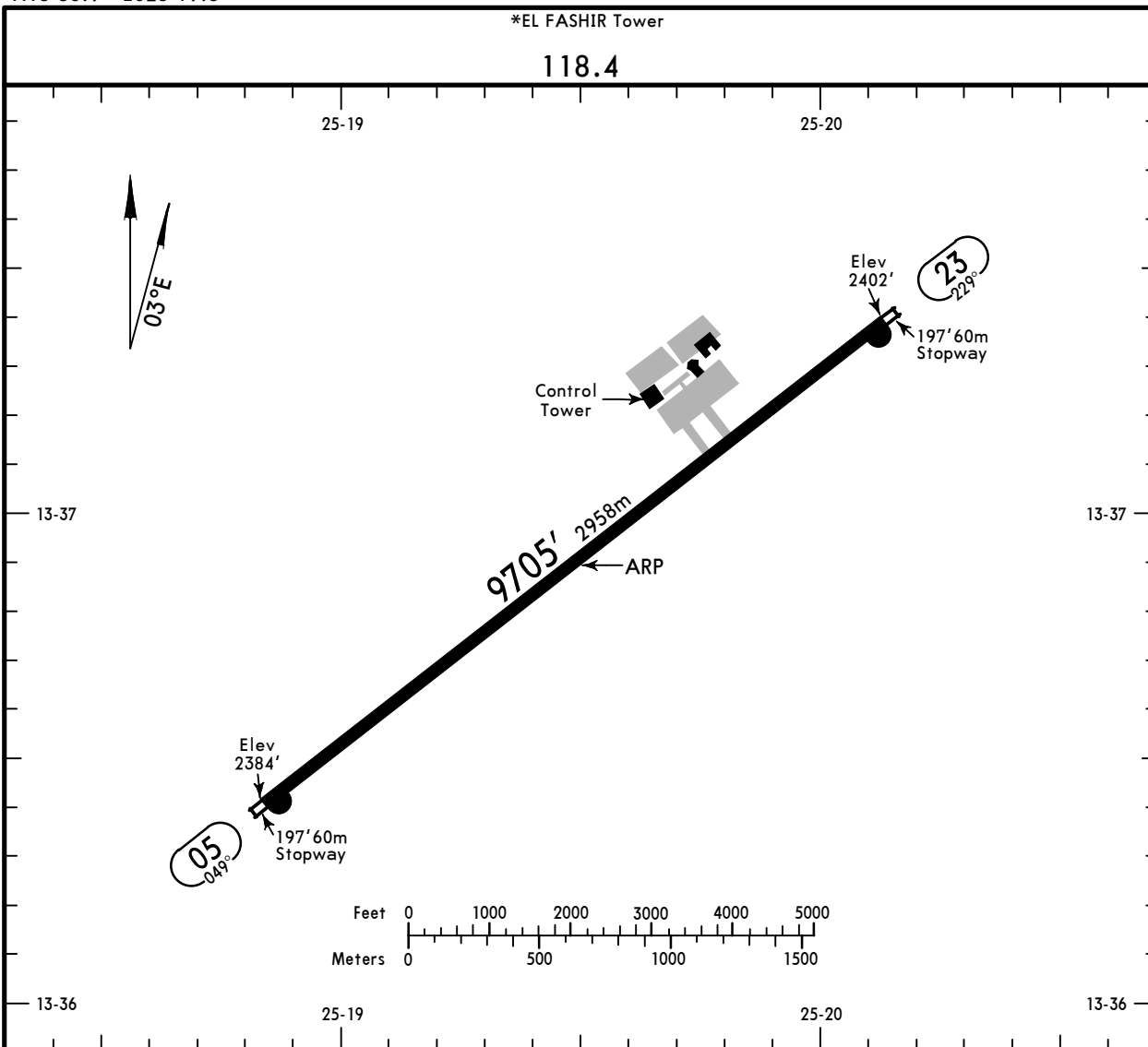
© JEPPesen, 2018. ALL RIGHTS RESERVED.



**HSFS/ELF**  
 Apt Elev **2402'**  
 N13 36.9 E025 19.5

**JEPPESEN**  
 11 OCT 19 **(10-9)**

**EL FASHIR, SUDAN**  
 EL FASHIR



**ADDITIONAL RUNWAY INFORMATION**

RWY		USABLE LENGTHS			WIDTH
		Threshold	Landing Beyond Glide Slope	TAKE-OFF	
05	ALS ① PAPI-L (angle 3.00°)				148'
23	APAPI-L (angle 3.00°)				45m

① Configuration unknown.

**TAKE-OFF**

**AIR CARRIER (JAA)**  
**All Rwys**

	LVP must be in force RCLM (DAY only) or RL	RCLM (DAY only) or RL
A		
B	250m	400m
C		
D	300m	

HSFS/ELF



7 SEP 18

10-9S

Eff 13 Sep

EL FASHIR, SUDAN  
ÉL FASHIR

Standard

STRAIGHT-IN RWY		A	B	C	D
05	① RNP (LNAV)	2780' (378') R1500m	2780' (378') R1500m	2780' (378') R1700m	2780' (378') R1700m
	① VOR Z	2770' (368') R1500m	2770' (368') R1500m	2770' (368') R1700m	2770' (368') R1700m
	① VOR Y	3080' (678') R1500m	3080' (678') R1500m	3100' (698') R2400m	3100' (698') R2400m
	VOR Y	3080' (678') R3300m	3080' (678') R3300m	3100' (698') R3600m	3100' (698') R3600m
23	① RNP (LNAV)	2910' (508') R1500m	2910' (508') R1500m	2910' (508') R2400m	2910' (508') R2400m
	① VOR DME	2910' (508') R1500m	2910' (508') R1500m	2910' (508') R2400m	2910' (508') R2400m

① Continuous Descent Final Approach.

CIRCLE-TO-LAND	100 KT	135 KT	180 KT	205 KT
	② 2920' (518') V1900m	② 2970' (568') V2800m	3130' (728') V3700m	3130' (728') V4600m

② or higher minimums of preceding straight-in approach

TAKE-OFF

	Low Visibility Take-off		
	Day: RL & RCLM Night: RL	Day: RL or RCLM Night: RL	Adequate vis ref (Day only)
A			
B			
C	R300m	400m	500m
D			

**HSFS/ELF**  
**EL FASHIR**

**JEPPESEN**  
11 OCT 19 **(12-1)**

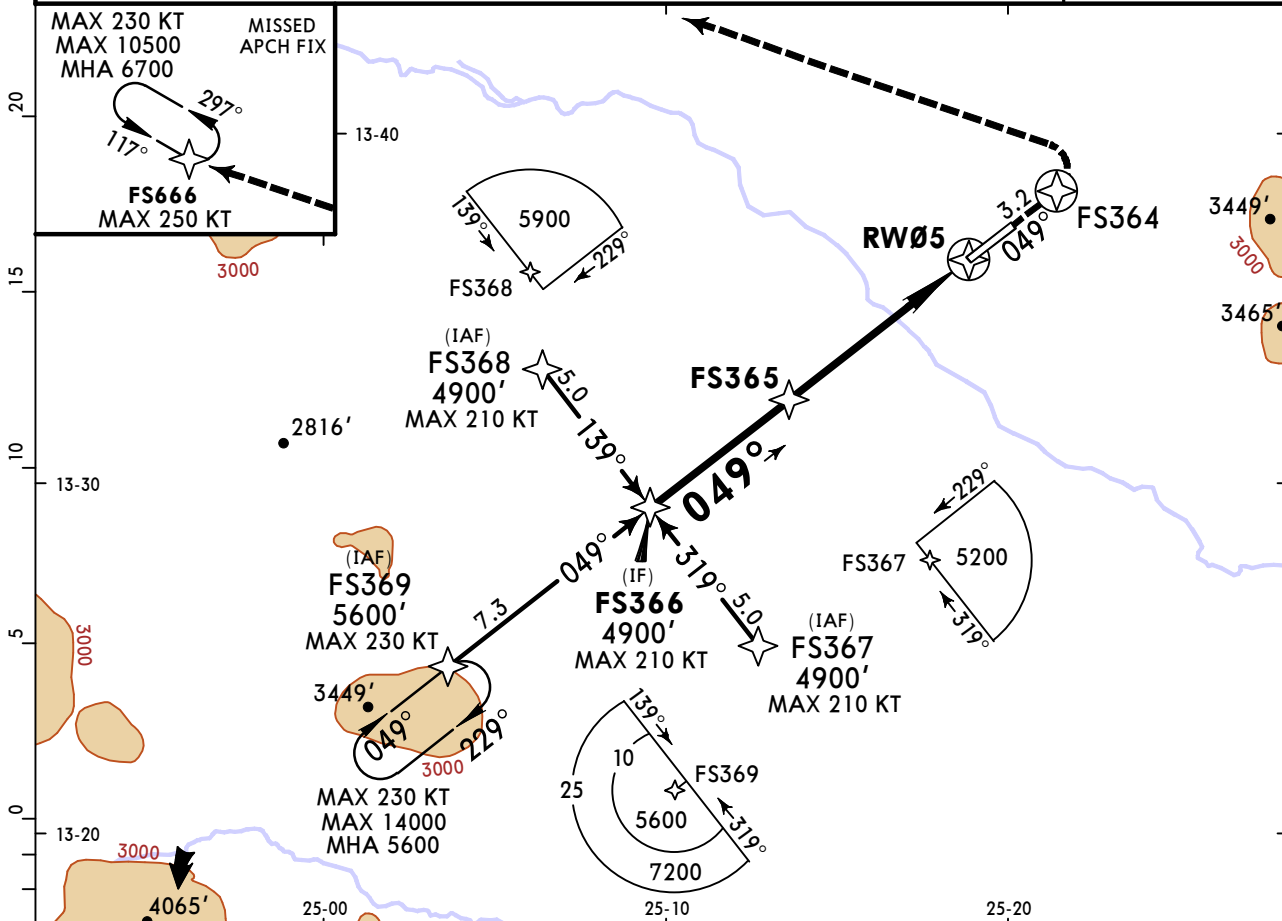
**EL FASHIR, SUDAN**  
**RNP Rwy 05**

\*EL FASHIR Tower (APP)

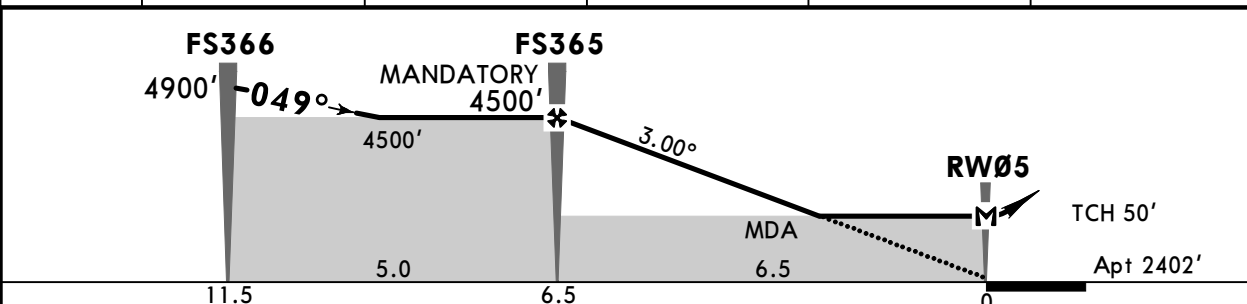
**118.4**

BRIEFING STRIP™

RNAV	Final Apch Crs <b>049°</b>	Mandatory Alt <b>FS365</b> <b>4500'</b> (2098')	LNAV MDA(H) <b>2780'</b> (378')	Apt 2402'	TAA 25 NM IAF
<b>MISSED APCH:</b> Climb to 6700' on 049° to FS364, then turn LEFT (MAX 250 KT) direct to FS666 and join holding or follow ATC instructions.					
Alt Set: hPa	Apt Elev: 85 hPa	Trans level: By ATC	Trans alt: 7000'		



DIST to RW05	6.0	5.0	4.0	3.0	2.0
ALTITUDE	4340'	4030'	3710'	3390'	3070'



Gnd speed-Kts	70	90	100	120	140	160	ALS PAPI-L <b>6700'</b> ↑ on <b>049°</b> <b>FS364</b>
Descent Angle 3.00°	372	478	531	637	743	849	
MAP at RW05							

PANS OPS	STRAIGHT-IN LANDING RWY 05		CIRCLE-TO-LAND	
	MDA(H) <b>2780'</b> (378')		MDA(H)	
	ALS out		Max Kts	
A			100	<b>2920'</b> (518') 1900m
B	1600m		135	<b>2970'</b> (568') 2800m
C			180	<b>3130'</b> (728') 3700m
D	2000m		205	<b>3130'</b> (728') 4600m

HSFS/ELF  
EL FASHIR

**JEPPESEN**  
11 OCT 19 **(12-2)**

**EL FASHIR, SUDAN**  
**RNP Rwy 23**

\*EL FASHIR Tower (APP)

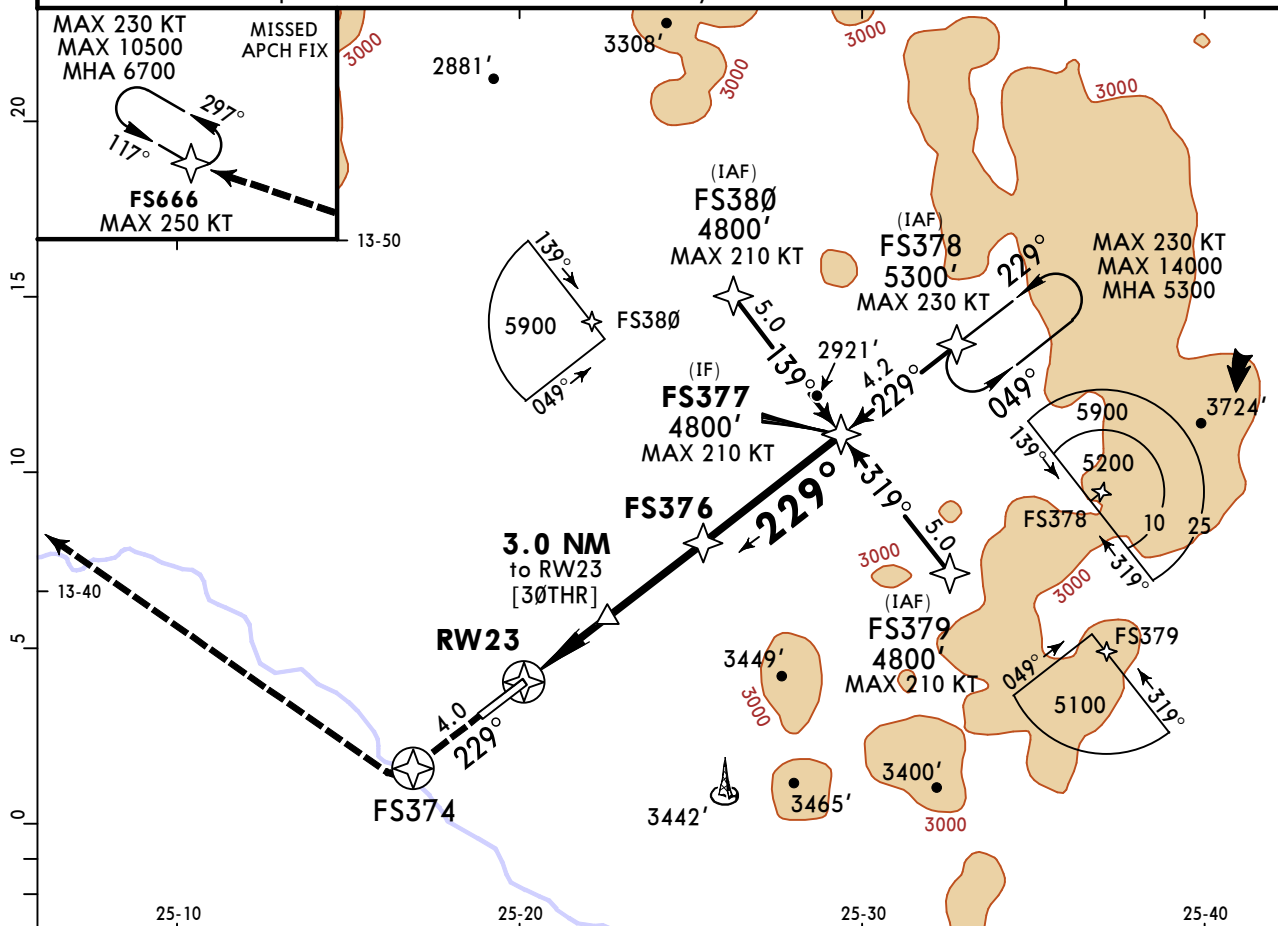
118.4

BRIEFING STRIP™

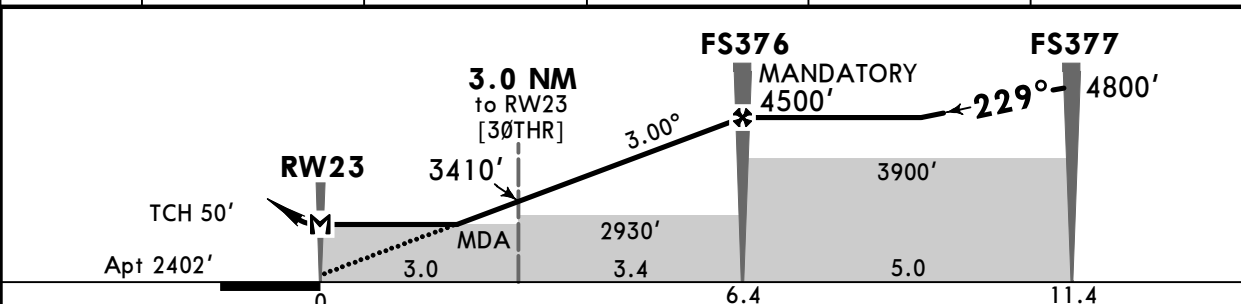
RNAV	Final Apch Crs <b>229°</b>	Mandatory Alt <b>FS376</b> <b>4500'</b> (2098')	LNAV MDA(H) <b>2910'</b> (508')	Apt 2402'	TAA 25 NM IAF
------	----------------------------------	---	---------------------------------------	-----------	---------------------

**MISSED APCH:** Climb to 6700' on 229° to FS374, then turn RIGHT (MAX 250 KT) direct to FS666 and join holding or follow ATC instructions.

Alt Set: hPa    Apt Elev: 85 hPa    Trans level: By ATC    Trans alt: 7000'



DIST to RW23	2.0	3.0	4.0	5.0	6.0
ALTITUDE	3090'	3410'	3730'	4050'	4360'



Gnd speed-Kts	70	90	100	120	140	160	APAPI-L	6700'	on 229°	FS374
Descent Angle 3.00°	372	478	531	637	743	849				
MAP at RW23										

STRAIGHT-IN LANDING RWY 23

CIRCLE-TO-LAND

MDA(H) **2910'** (508')

Max Kts

A	100	2920'	1900m
B	135	2970'	2800m
C	180	3130'	3700m
D	205	3130'	4600m

PANS OPS

**HSFS/ELF**  
**EL FASHIR**

**JEPPESEN**  
11 OCT 19 **(13-1)**

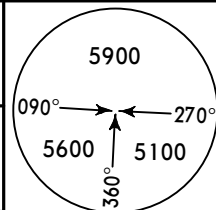
**EL FASHIR, SUDAN**  
**VOR Z Rwy 05**

\*EL FASHIR Tower (APP)

118.4

BRIEFING STRIP™

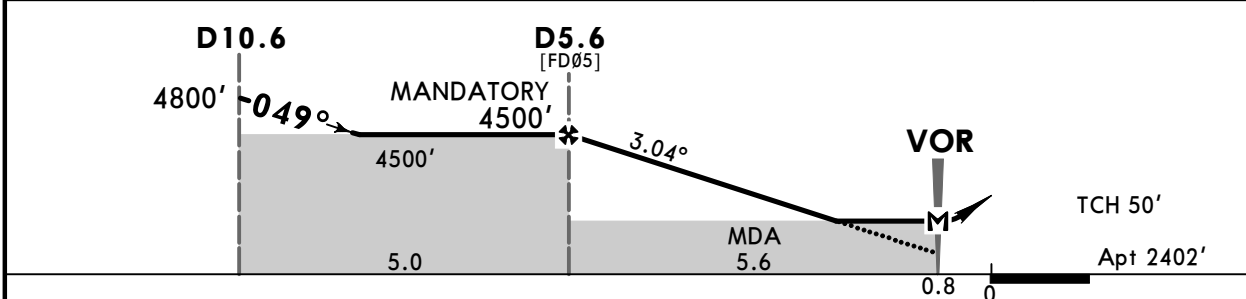
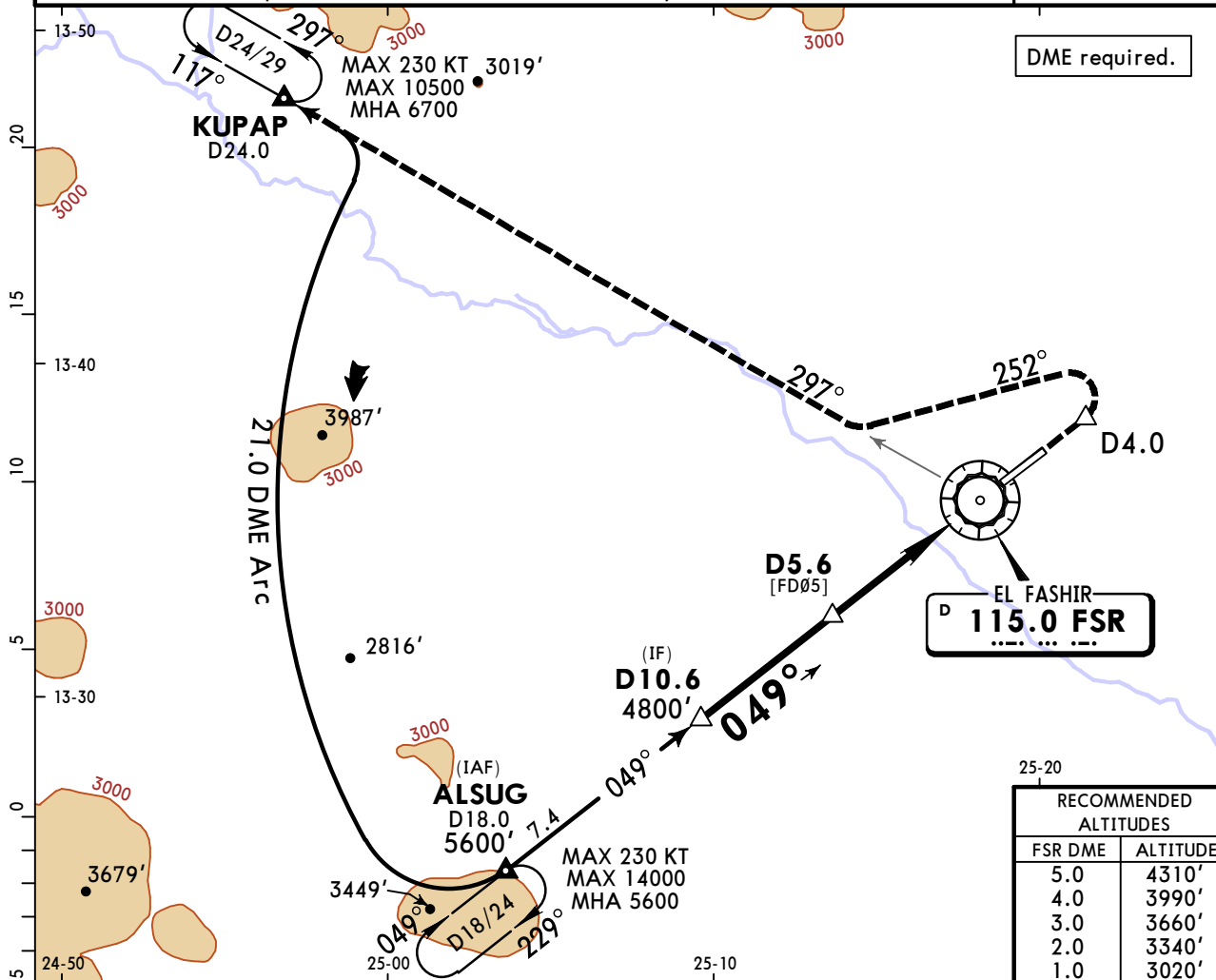
VOR FSR <b>115.0</b>	Final Apch Crs <b>049°</b>	Mandatory Alt D5.6 <b>4500'</b> (2098')	MDA(H) <b>2770'</b> (368')	Apt 2402'
----------------------------	----------------------------------	---	-------------------------------	-----------



**MISSED APCH:** Climb to 6700' on R-049, at D4.0 turn LEFT (MAX 250 KT) onto 252° to intercept and follow R-297 to KUPAP and join holding or follow ATC instructions.

Alt Set: hPa    Apt Elev: 85 hPa    Trans level: By ATC    Trans alt: 7000'

MSA FSR VOR



Gnd speed-Kts	70	90	100	120	140	160	ALS PAPI-L	<b>6700'</b> ↑ on <b>R-049</b>	FSR <b>115.0</b>	<b>D4.0</b>
Descent Angle 3.04°	376	484	538	645	753	861				
MAP at VOR										

PANS OPS	STRAIGHT-IN LANDING RWY 05		CIRCLE-TO-LAND	
	MDA(H)	ALS out	Max Kts	MDA(H)
A	<b>2770'</b> (368')		100	<b>2920'</b> (518')
B		1600m	135	<b>2970'</b> (568')
C			180	<b>3130'</b> (728')
D		2000m	205	<b>3130'</b> (728')

**HSFS/ELF**  
**EL FASHIR**

**JEPPESEN**  
11 OCT 19 **(13-2)**

**EL FASHIR, SUDAN**  
**VOR Y Rwy 05**

\*EL FASHIR Tower (APP)

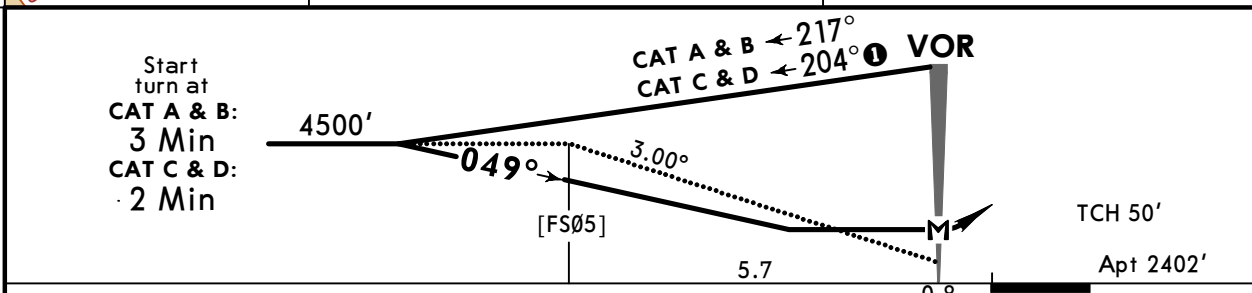
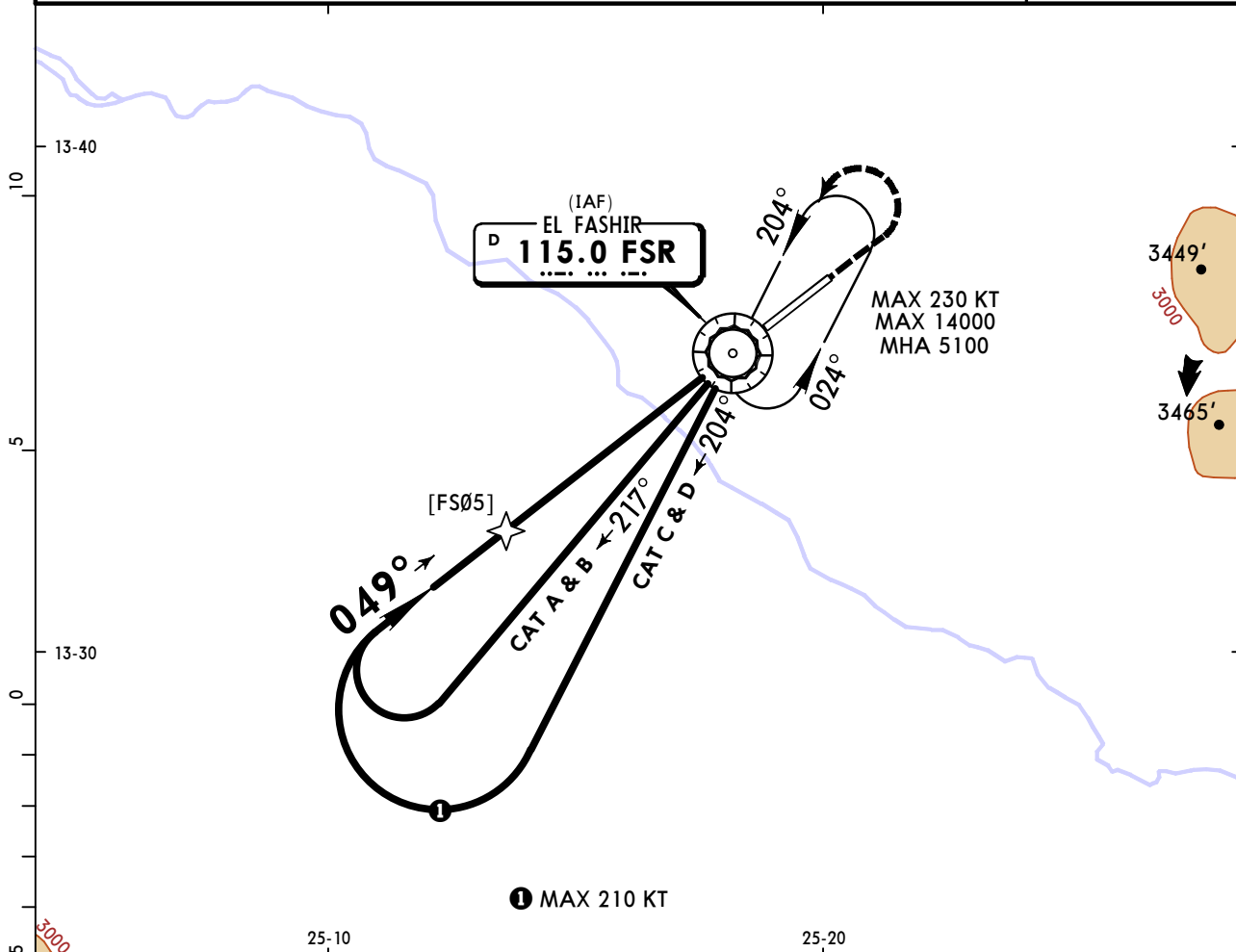
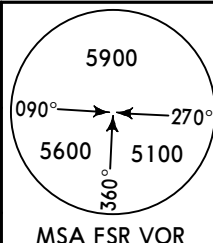
118.4

BRIEFING STRIP™

VOR FSR <b>115.0</b>	Final Apch Crs <b>049°</b>	No FAF	MDA(H) Refer to Minimums	Apt 2402'
----------------------------	----------------------------------	--------	--------------------------------	-----------

**MISSED APCH:** Climb to 4500' on R-049, at 3800' turn LEFT (MAX 250 KT) to VOR and join holding or follow ATC instructions.

Alt Set: hPa    Apt Elev: 85 hPa    Trans level: By ATC    Trans alt: 7000'



Gnd speed-Kts	70	90	100	120	140	160	ALS PAPI-L	<b>3800'</b> ↑ on <b>115.0</b> <b>R-049</b>
Descent Angle 3.00°	372	478	531	637	743	849		
MAP at VOR								

STRAIGHT-IN LANDING RWY 05		CIRCLE-TO-LAND	
MDA(H) AB: <b>3080'</b> (678') CD: <b>3100'</b> (698')			
ALS out		Max Kts	MDA(H)
A		100	<b>3080'</b> (678') 1900m
B	1600m	135	<b>3080'</b> (678') 2800m
C	3200m	180	<b>3130'</b> (728') 3700m
D	3600m	205	<b>3130'</b> (728') 4600m

PANS OPS

# HSFS/ELF EL FASHIR

**JEPPESEN**  
6 SEP 19 **13-3** Eff 12 Sep

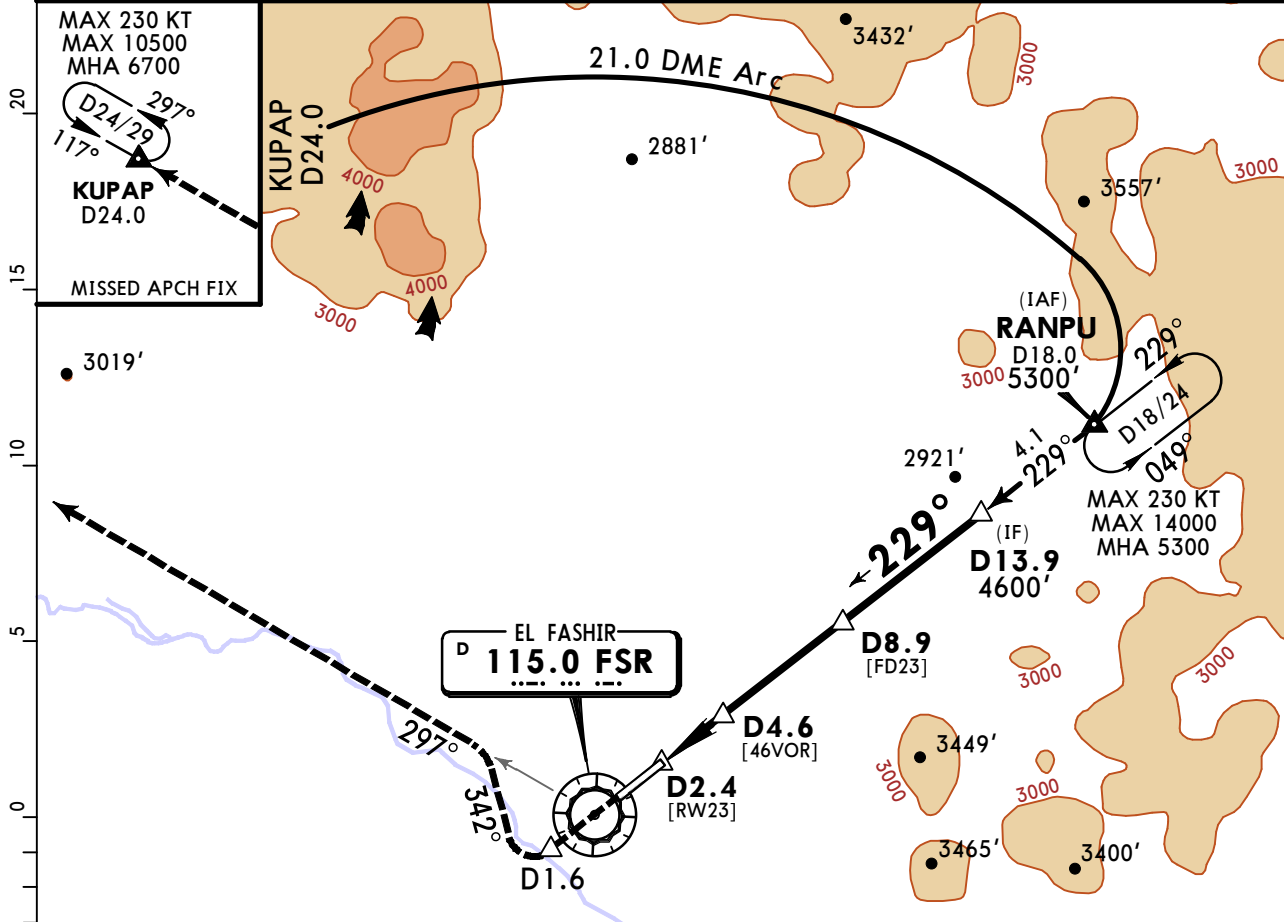
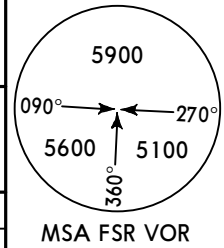
# EL FASHIR, SUDAN VOR DME Rwy 23

\*EL FASHIR Tower (APP)

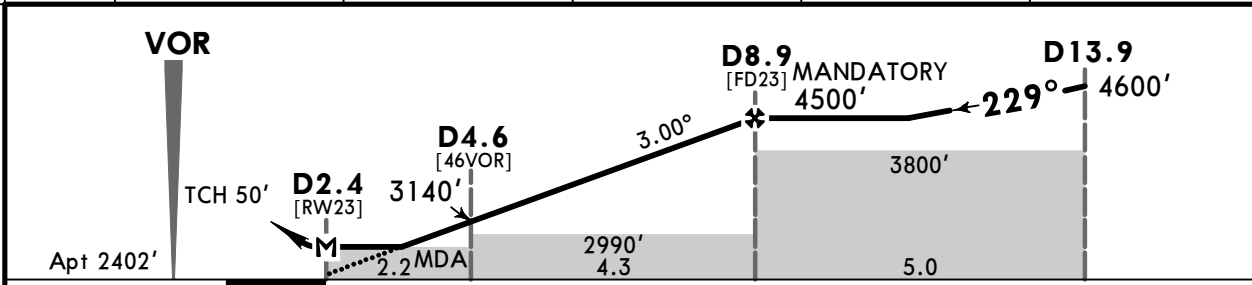
118.4

BRIEFING STRIP™

VOR FSR <b>115.0</b>	Final Apch Crs <b>229°</b>	Mandatory Alt D8.9 <b>4500'</b> (2098')	MDA(H) <b>2910'</b> (508')	Apt 2402'
<b>MISSED APCH:</b> Climb to 6700' on R-049 to VOR, then follow R-229, at D1.6 turn RIGHT (MAX 250 KT) onto 342° to intercept and follow R-297 to KUPAP and join holding or follow ATC instructions.				
Alt Set: hPa	Apt Elev: 85 hPa	Trans level: By ATC	Trans alt: 7000'	
DME required.				



FSR DME	4.0	5.0	6.0	7.0	8.0
ALTITUDE	2950'	3270'	3590'	3900'	4220'



Gnd speed-Kts	70	90	100	120	140	160	APAPI-L	6700'	FSR 115.0	D1.6 on R-229
Descent Angle 3.00°	372	478	531	637	743	849				
MAP at D2.4										

STRAIGHT-IN LANDING RWY 23		CIRCLE-TO-LAND	
MDA(H) 2910' (508')		Max Kts	MDA(H)
A		100	2920' (518')
B	1600m	135	2970' (568')
C		180	3130' (728')
D	2400m	205	3130' (728')

PANS OPS

### Chart changes since cycle 15-2023

ADD = added chart, REV = revised chart, DEL = deleted chart.

ACT	PROCEDURE IDENT	INDEX	REV DATE	EFF DATE
<b>EL FASHIR, (EL FASHIR - HSFS)</b>				

## TERMINAL CHART CHANGE NOTICES

No Chart Change Notices for Airport HSFS