

List of pages in this Trip Kit

Trip Kit Index

Airport Information For HSKA

Terminal Charts For HSKA

Revision Letter For Cycle 16-2023

Change Notices

Notebook

General Information

Location: KASSALA SDN
ICAO/IATA: HSKA / KSL
Lat/Long: N15° 23.25', E036° 19.73'
Elevation: 1671 ft

Airport Use: Public
Daylight Savings: Not Observed
UTC Conversion: -2:00 = UTC
Magnetic Variation: 3.0° E

Fuel Types: Jet A-1
Customs: Yes
Airport Type: VFR
Landing Fee: No
Control Tower: Yes
Jet Start Unit: No
LLWS Alert: No
Beacon: No

Sunrise: 0337 Z
Sunset: 1502 Z

Runway Information

Runway: 02
Length x Width: 8202 ft x 148 ft
Surface Type: asphalt
TDZ-Elev: 1671 ft
Lighting: Edge, ALS
Stopway: 197 ft

Runway: 20
Length x Width: 8202 ft x 148 ft
Surface Type: asphalt
TDZ-Elev: 1667 ft
Lighting: Edge
Stopway: 197 ft

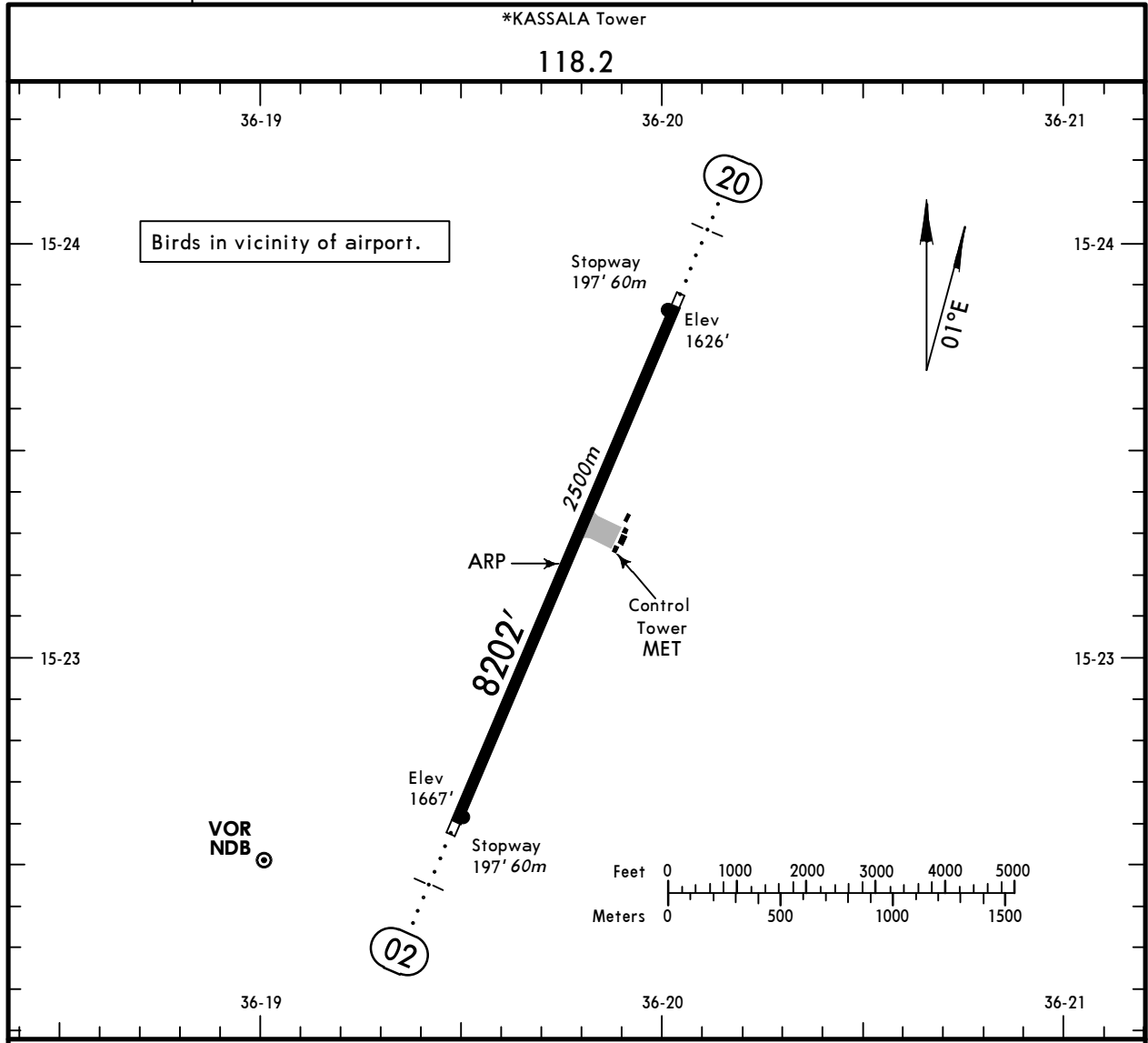
Communication Information

Kassala Tower: 118.200

HSKA
Apt Elev 1667'
 KSL 114.8 - On Airport

JEPPESEN
 11 FEB 00 **(19-1)**

KASSALA, SUDAN
KASSALA
 N15 23.2 E036 19.8



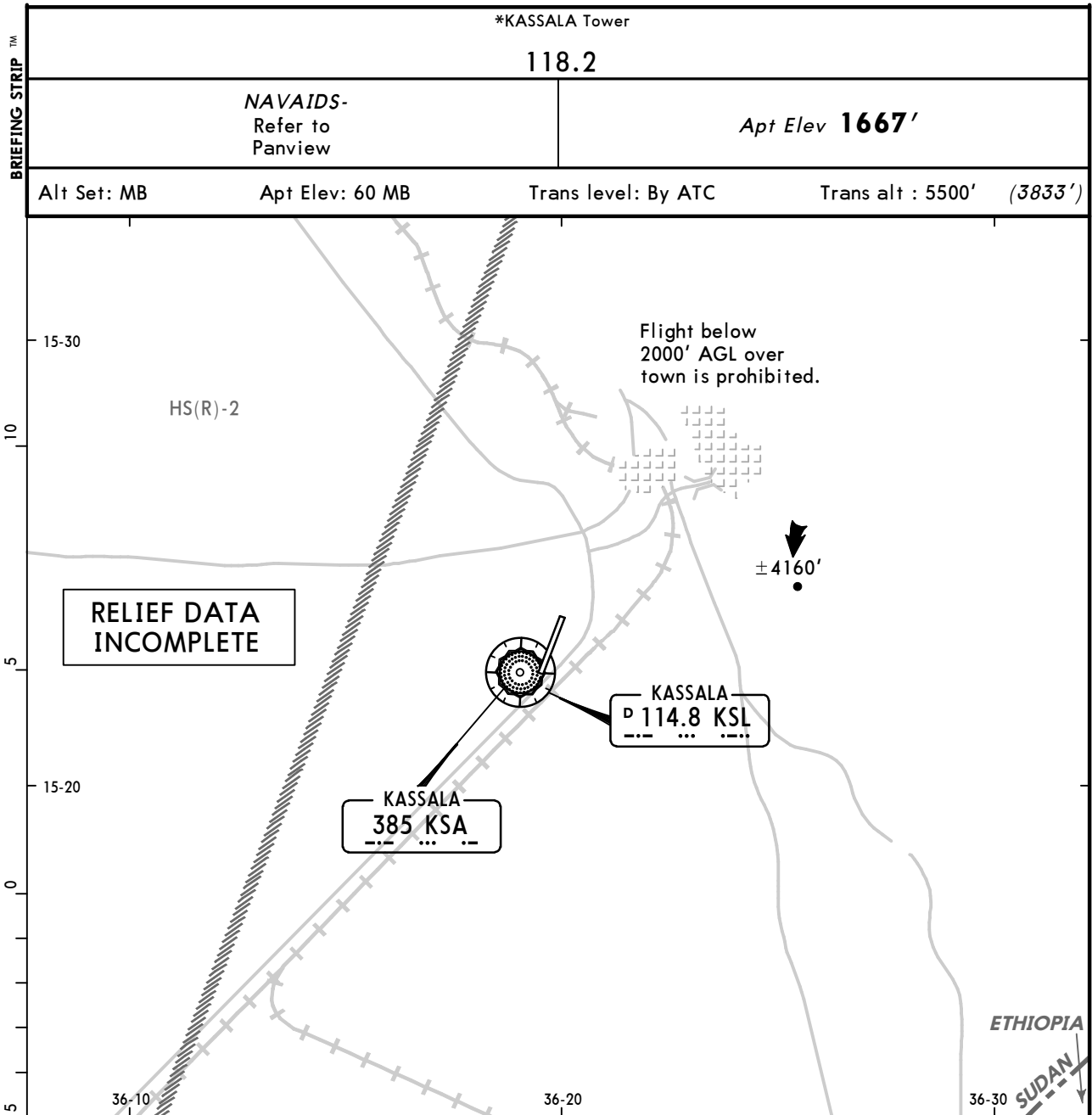
ADDITIONAL RUNWAY INFORMATION

RWY	USABLE LENGTHS	LANDING BEYOND	TAKE-OFF	WIDTH
02 20	RL ALS			148' 45m

HSKA
KASSALA

JEPPESEN
11 FEB 00 (19-1)

KASSALA, SUDAN
VICINITY CHART



No instrument approach procedure
established for this airport.

	Lighting- Refer to Airport chart
--	---

--	--

Chart changes since cycle 15-2023

ADD = added chart, REV = revised chart, DEL = deleted chart.

ACT	PROCEDURE IDENT	INDEX	REV DATE	EFF DATE
KASSALA, (KASSALA - HSKA)				

TERMINAL CHART CHANGE NOTICES

Chart Change Notices for Airport HSKA

Type: Terminal

Effectivity: Temporary

Begin Date: Immediately

End Date: Until Further Notice

Kassala VOR DME KSL u/s.