

List of pages in this Trip Kit

Trip Kit Index

Airport Information For HSPN

Terminal Charts For HSPN

Revision Letter For Cycle 16-2023

Change Notices

Notebook

General Information

Location: PORT SUDAN SDN
ICAO/IATA: HSPN / PZU
Lat/Long: N19° 26.02', E037° 14.05'
Elevation: 135 ft

Airport Use: Public
Daylight Savings: Not Observed
UTC Conversion: -2:00 = UTC
Magnetic Variation: 4.0° E

Fuel Types: 100 Octane (LL), Jet A-1
Customs: Yes
Airport Type: IFR
Landing Fee: Yes
Control Tower: Yes
Jet Start Unit: No
LLWS Alert: No
Beacon: Yes

Sunrise: 0339 Z
Sunset: 1452 Z

Runway Information

Runway: 16
Length x Width: 8202 ft x 148 ft
Surface Type: asphalt
TDZ-Elev: 135 ft
Lighting: Edge, ALS

Runway: 34
Length x Width: 8202 ft x 148 ft
Surface Type: asphalt
TDZ-Elev: 135 ft
Lighting: Edge, ALS

Communication Information

Port Sudan Tower: 128.100
Port Sudan Approach: 128.100

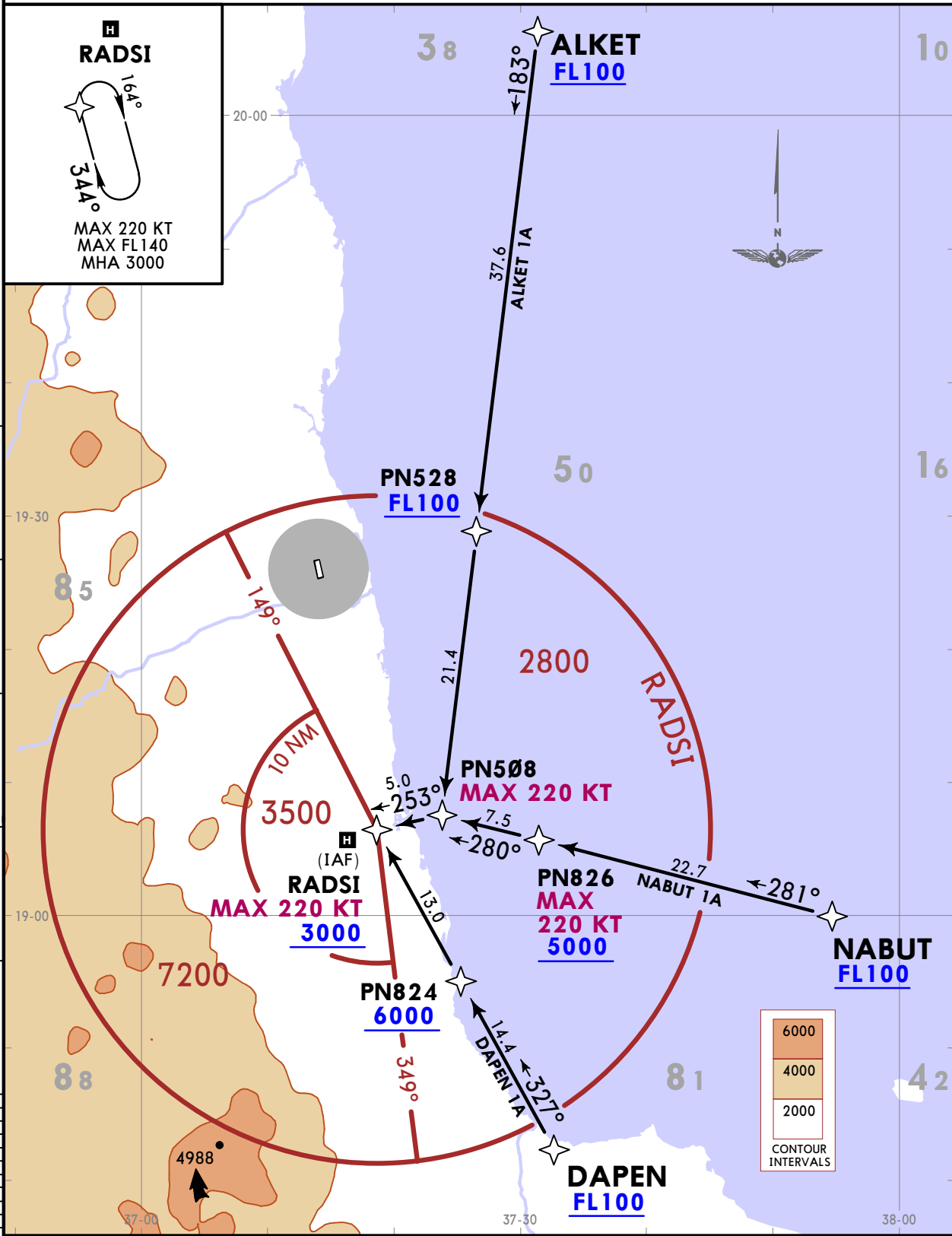
HSPN/PZU
PORT SUDAN

JEPPESEN
17 MAR 23 **10-2** Eff 23 Mar

PORT SUDAN, SUDAN
RNAV STAR

Apt Elev 135	Alt Set: hPa Trans level: By ATC
	RNP-1 required.

**ALKET 1A [ALKE1A], DAPEN 1A [DAPE1A]
NABUT 1A [NABU1A]
RNAV ARRIVALS
(RWY 34)**



STAR	ROUTING
ALKET 1A	ALKET (FL100+) - PN528 (FL100+) - PN508 (K220-) - RADSI (K220-; 3000+).
DAPEN 1A	DAPEN (FL100+) - PN824 (6000+) - RADSI (K220-; 3000+).
NABUT 1A	NABUT (FL100+) - PN826 (K220-; 5000+) - PN508 (K220-) - RADSI (K220-; 3000+).

CHANGES: Track update.

© JEPPESEN, 2018, 2023. ALL RIGHTS RESERVED.

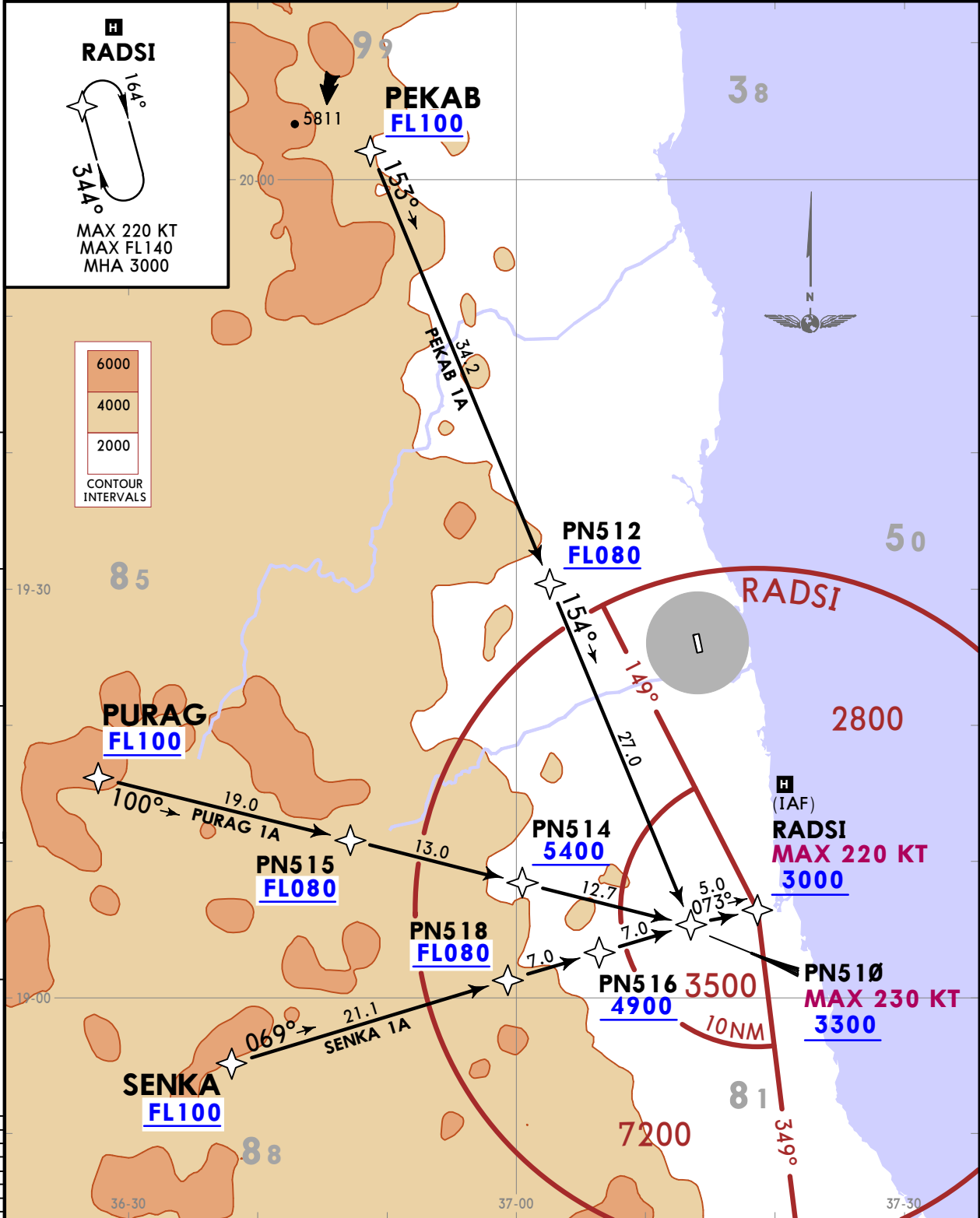
HSPN/PZU
PORT SUDAN

JEPPESEN
17 MAR 23 **(10-2A)** Eff 23 Mar

PORT SUDAN, SUDAN
RNAV STAR

Apt Elev 135	Alt Set: hPa Trans level: By ATC RNP-1 required.
------------------------	---

**PEKAB 1A [PEKA1A], PURAG 1A [PURA1A]
SENKA 1A [SENK1A]
RNAV ARRIVALS
(RWY 34)**



STAR	ROUTING
PEKAB 1A	PEKAB (FL100+) - PN512 (FL080+) - PN510 (K230-; 3300+) - RADSI (K220-; 3000+).
PURAG 1A	PURAG (FL100+) - PN515 (FL080+) - PN514 (5400+) - PN510 (K230-; 3300+) - RADSI (K220-; 3000+).
SENKA 1A	SENKA (FL100+) - PN518 (FL080+) - PN516 (4900+) - PN510 (K230-; 3300+) - RADSI (K220-; 3000+).

CHANGES: Track update.

© JEPPESEN, 2018, 2023. ALL RIGHTS RESERVED.

HSPN/PZU
PORT SUDAN

JEPPESEN

PORT SUDAN, SUDAN

17 MAR 23

10-2B

Eff 23 Mar

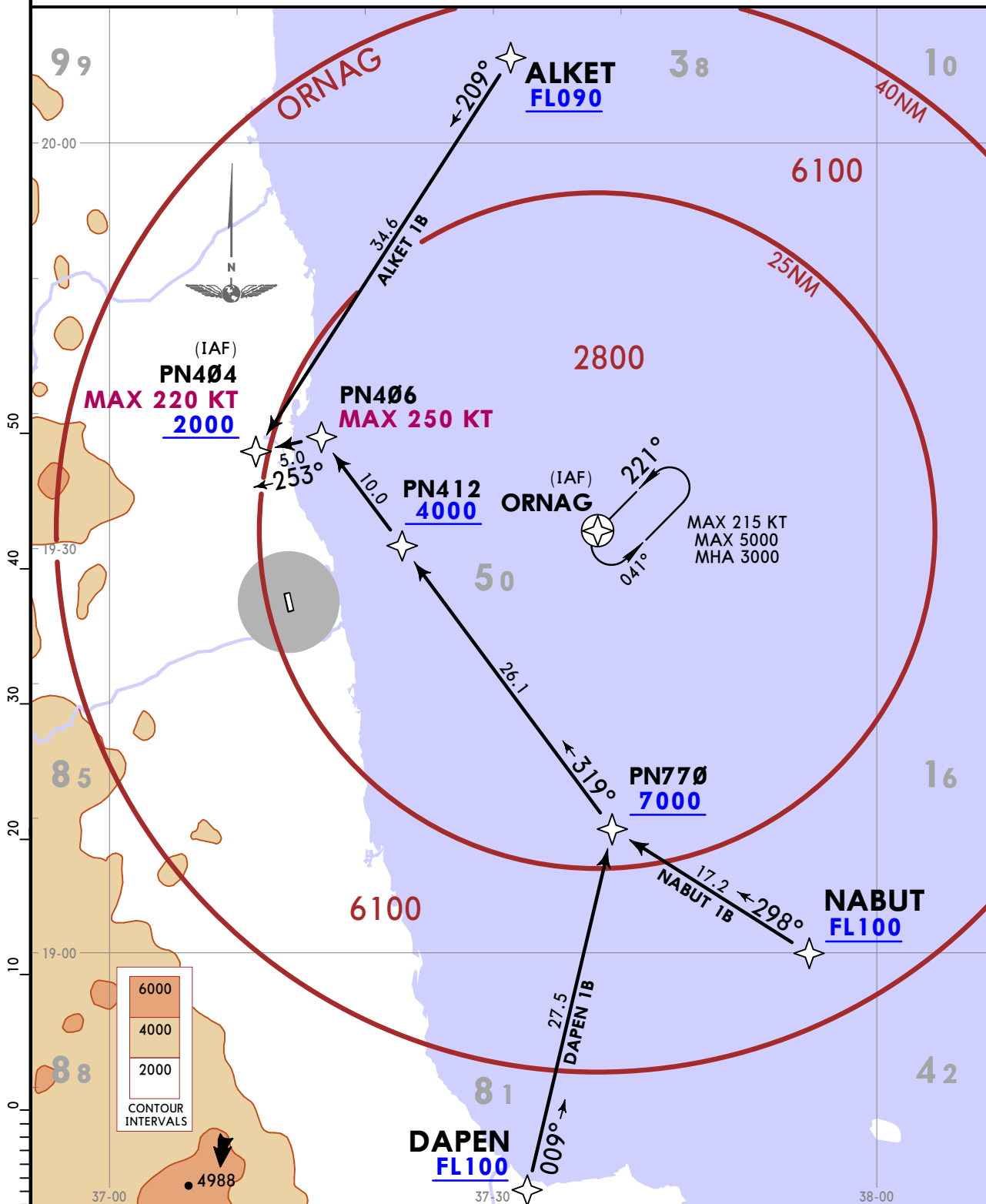
RNAV STAR

Apt Elev Alt Set: hPa Trans level: By ATC

135

RNP-1 required.

**ALKET 1B [ALKE1B], DAPEN 1B [DAPE1B]
NABUT 1B [NABU1B]
RNAV ARRIVALS
(RWY 16)**

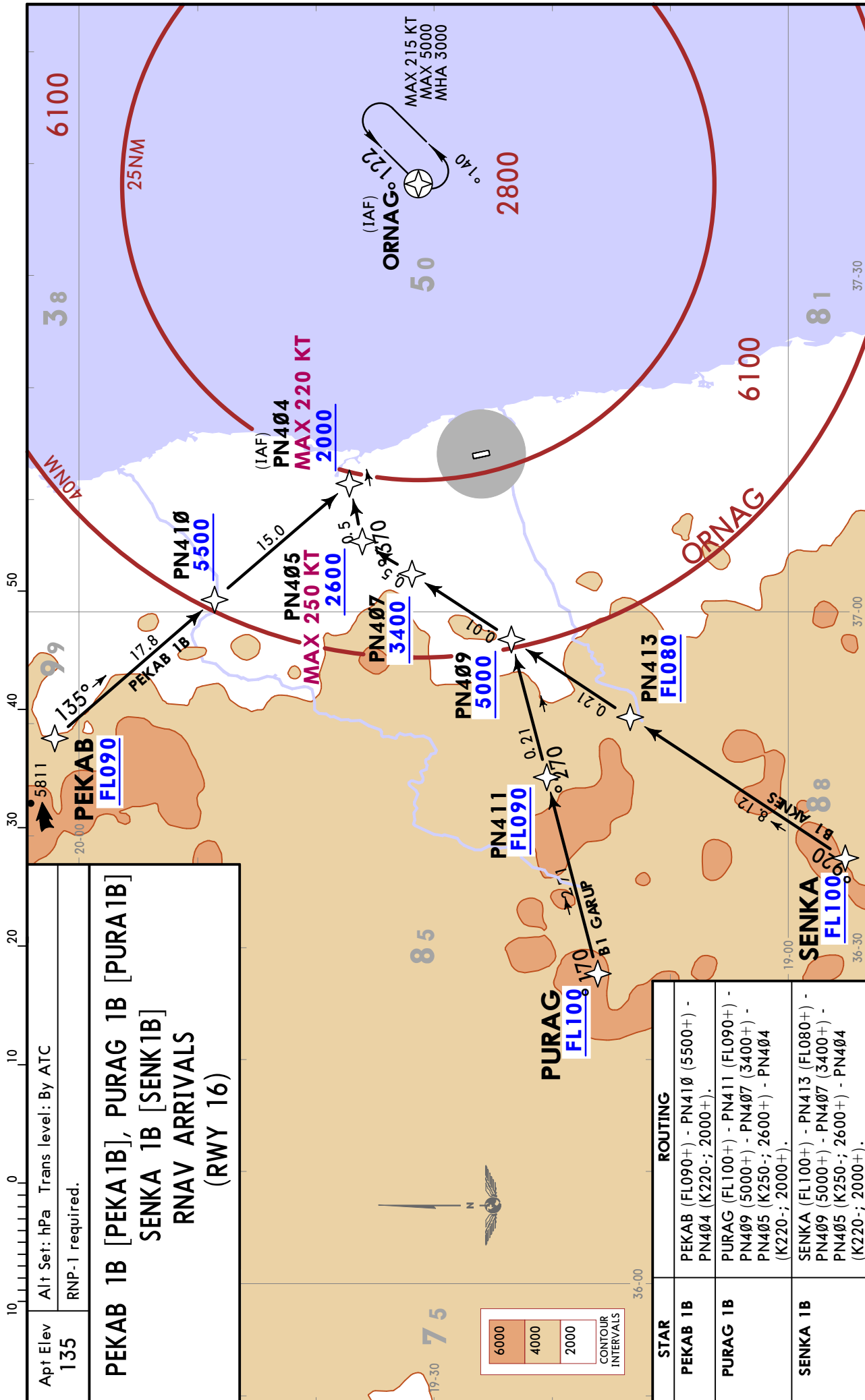


STAR	ROUTING
ALKET 1B	ALKET (FL090+) - PN404 (K220-; 2000+).
DAPEN 1B	DAPEN (FL100+) - PN770 (7000+) - PN412 (4000+) - PN406 (K250-) - PN404 (K220-; 2000+).
NABUT 1B	NABUT (FL100+) - PN770 (7000+) - PN412 (4000+) - PN406 (K250-) - PN404 (K220-; 2000+).

HSPN/PZU PORT SUDAN

JEPPESSEN
17 MAR 23 10-2C Eff 23 Mar

PORT SUDAN, SUDAN
RNAV STAR



Apt Elev 135
Alt Set: hPa Trans level: By ATC
RNP-1 required.

**PEKAB 1B [PEKA1B], PURAG 1B [PURA1B]
SENKA 1B [SENK1B]
RNAV ARRIVALS
(RWY 16)**

CHANGES: Track update.

© JEPPESSEN, 2018, 2023. ALL RIGHTS RESERVED.

HSPN/PZU
PORT SUDAN

JEPPESEN

PORT SUDAN, SUDAN

17 MAR 23

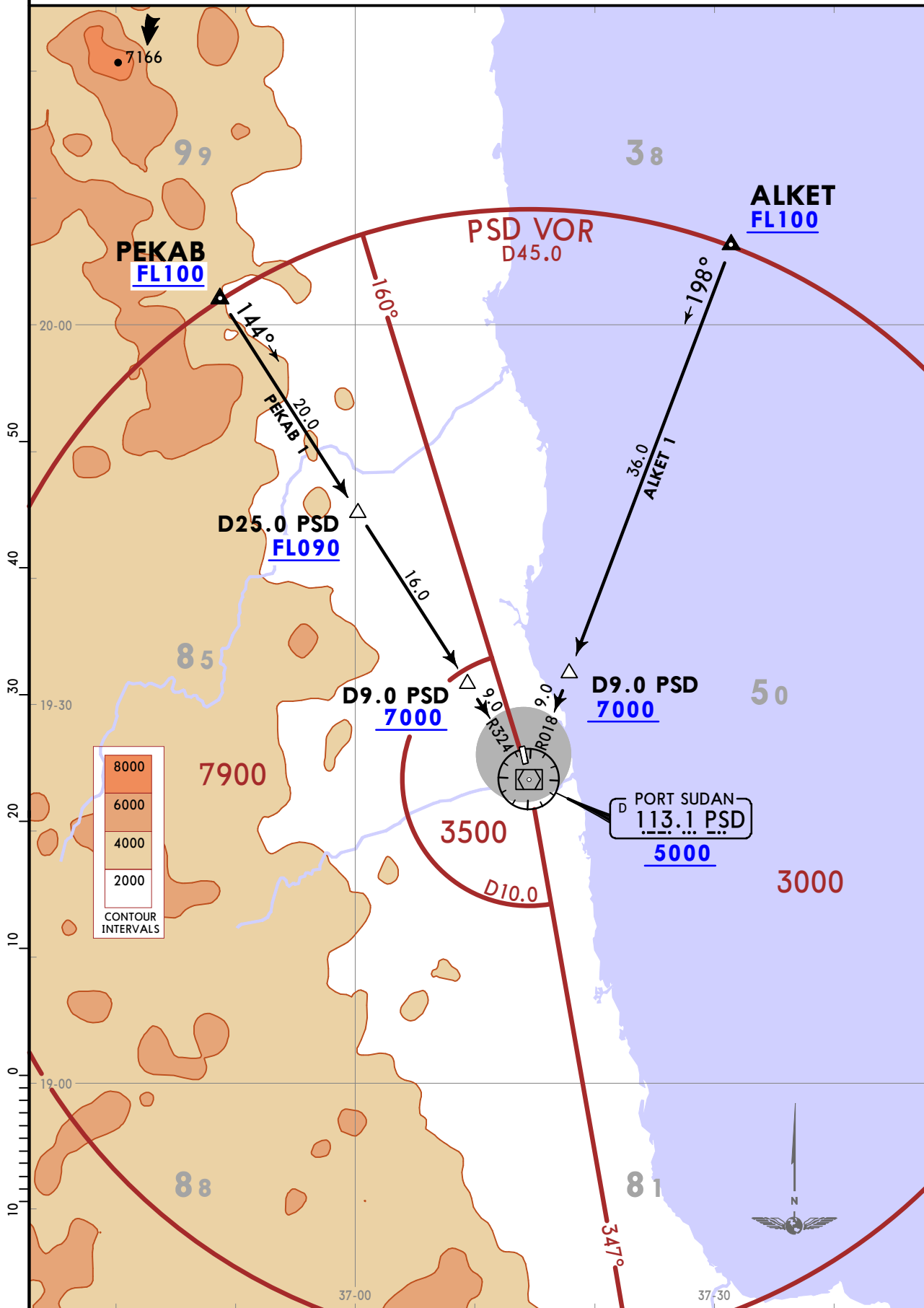
10-2D

Eff 23 Mar

STAR

Apt Elev 135
Alt Set: hPa Trans level: By ATC
DME required.

ALKET 1 [ALKET1], PEKAB 1 [PEKAB1]
ARRIVALS
(ALL RWYS)



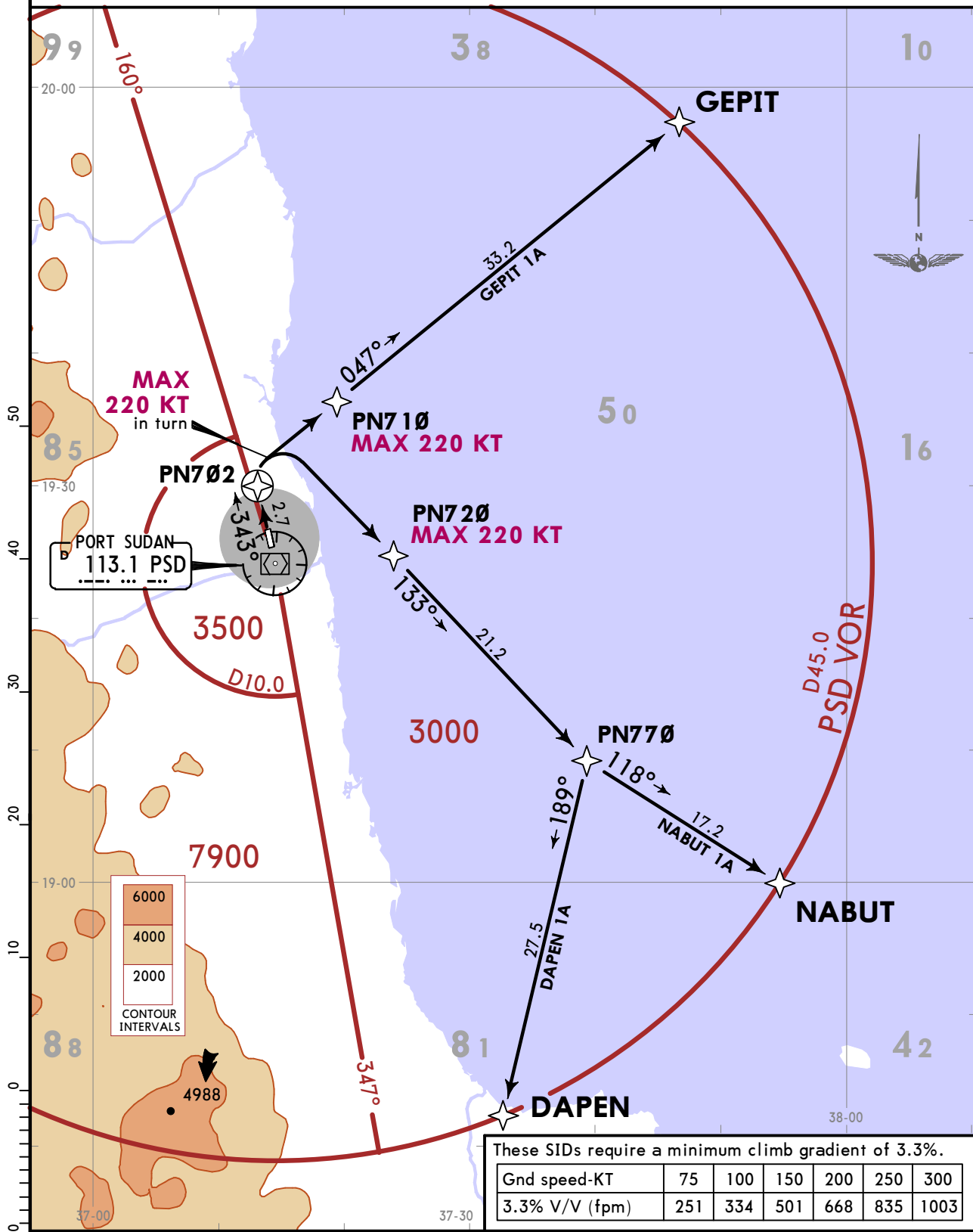
HSPN/PZU
PORT SUDAN

JEPPESEN
17 MAR 23 **10-3** Eff 23 Mar

PORT SUDAN, SUDAN
RNAV SID

Apt Elev 135	Trans alt: 7000
	RNP-1 required.

**DAPEN 1A [DAPE1A], GEPIT 1A [GEP11A]
NABUT 1A [NABU1A]
RNAV DEPARTURES
(RWY 34)**



SID	ROUTING
DAPEN 1A	Climb on 343° track to PN702, turn RIGHT direct to PN720, then to PN770, then to DAPEN.
GEPIT 1A	Climb on 343° track to PN702, turn RIGHT direct to PN710, then to GEPIT.
NABUT 1A	Climb on 343° track to PN702, turn RIGHT direct to PN720, then to PN770, then to NABUT.

CHANGES: Track update.

© JEPPESEN, 2018, 2023. ALL RIGHTS RESERVED.

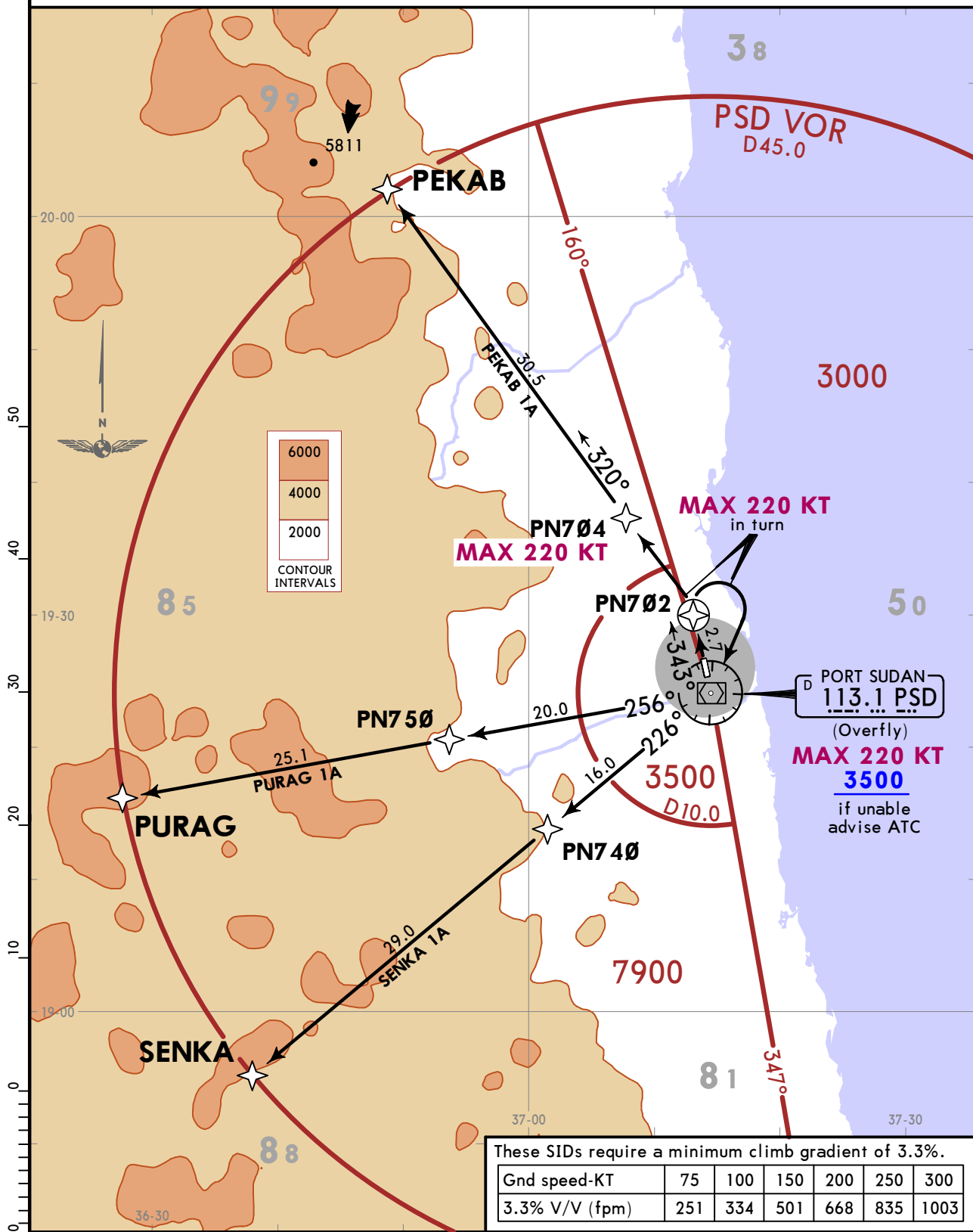
HSPN/PZU
PORT SUDAN

JEPPESEN
17 MAR 23 (10-3A) Eff 23 Mar

PORT SUDAN, SUDAN
RNAV SID

Apt Elev 135	Trans alt: 7000
	RNP-1 required.

PEKAB 1A [PEKA1A], PURAG 1A [PURA1A]
SENKA 1A [SENK1A]
RNAV DEPARTURES
(RWY 34)



These SIDs require a minimum climb gradient of 3.3%.

Gnd speed-KT	75	100	150	200	250	300
3.3% V/V (fpm)	251	334	501	668	835	1003

SID	ROUTING
PEKAB 1A	Climb on 343° track to PN702, turn LEFT direct to PN704, then to PEKAB.
PURAG 1A	Climb on 343° track to PN702, turn RIGHT direct to PSD, then to PN750, then to PURAG.
SENKA 1A	Climb on 343° track to PN702, turn RIGHT direct to PSD, then to PN740, then to SENKA.

HSPN/PZU
PORT SUDAN

JEPPESEN
17 MAR 23 10-3B Eff 23 Mar

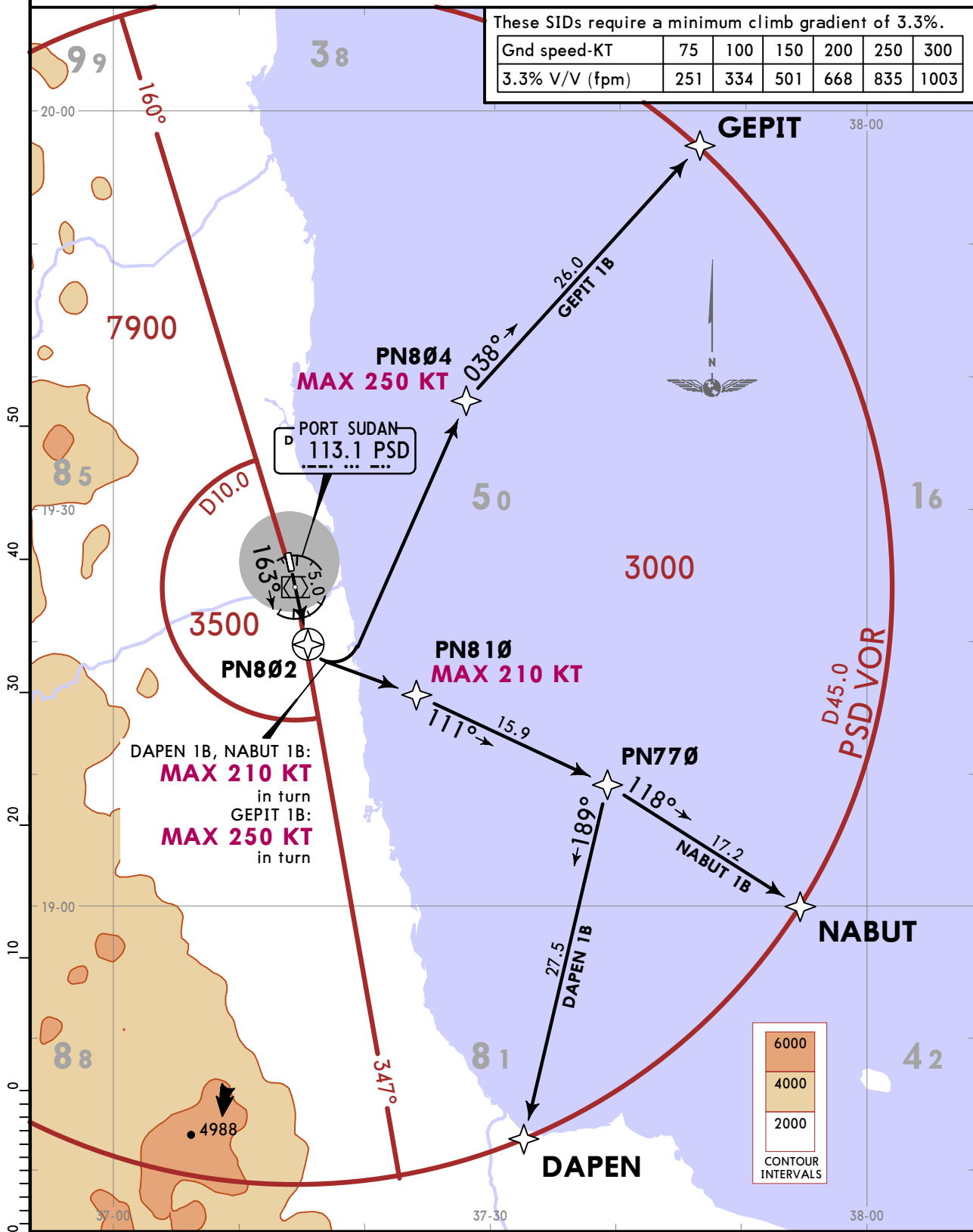
PORT SUDAN, SUDAN
RNAV SID

Apt Elev 135	Trans alt: 7000
	RNP-1 required.

DAPEN 1B [DAPE1B], GEPIT 1B [GEP11B]
NABUT 1B [NABU1B]
RNAV DEPARTURES
(RWY 16)

These SIDs require a minimum climb gradient of 3.3%.

Gnd speed-KT	75	100	150	200	250	300
3.3% V/V (fpm)	251	334	501	668	835	1003



SID	ROUTING
DAPEN 1B	Climb on 163° track to PN802, turn LEFT direct to PN810, then to PN770, then to DAPEN.
GEPIT 1B	Climb on 163° track to PN802, turn LEFT direct to PN804, then to GEPIT.
NABUT 1B	Climb on 163° track to PN802, turn LEFT direct to PN810, then to PN770, then to NABUT.

CHANGES: Track update.

© JEPPESEN, 2018, 2023. ALL RIGHTS RESERVED.

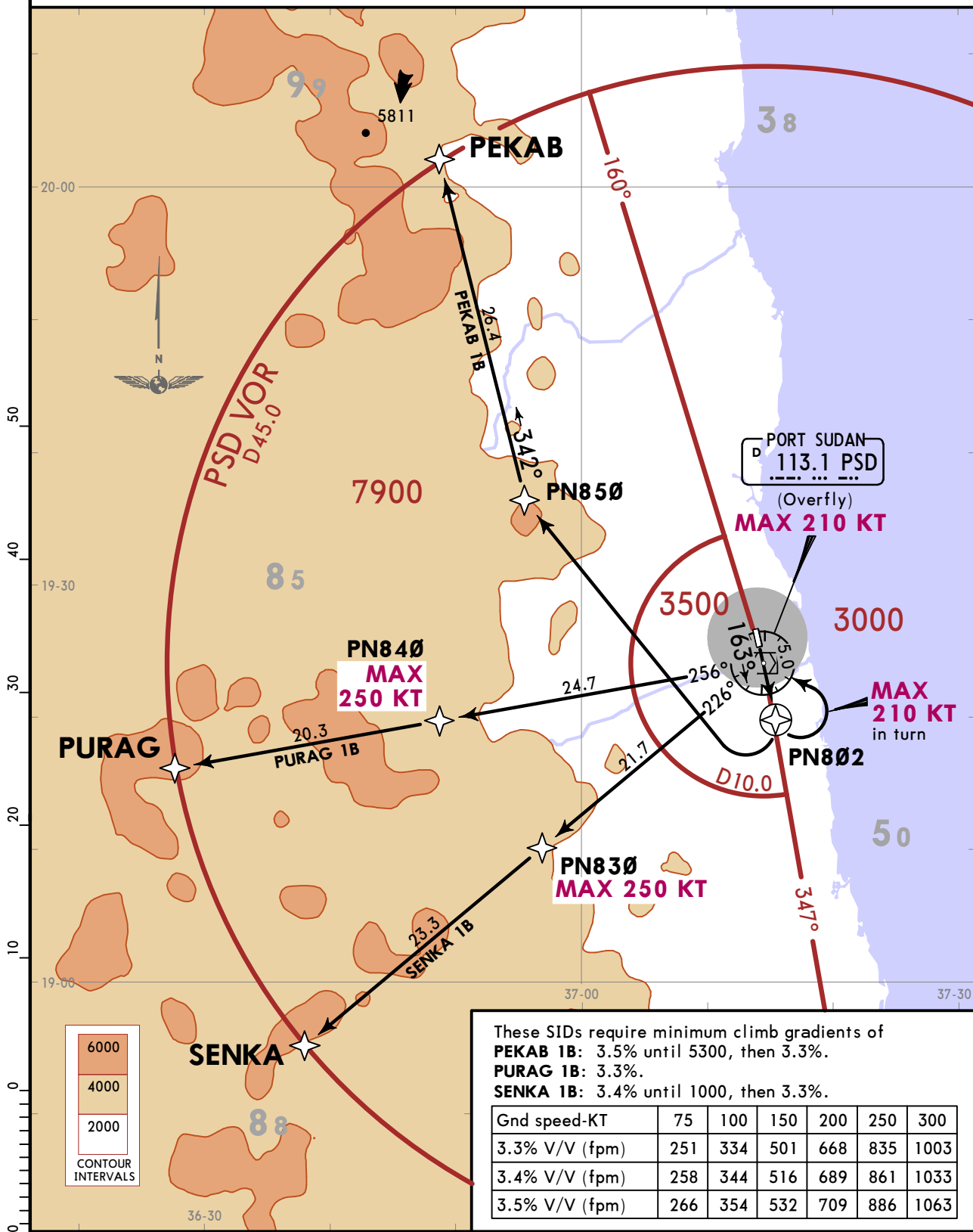
HSPN/PZU
PORT SUDAN

JEPPESEN
17 MAR 23 **(10-3C)** Eff 23 Mar

PORT SUDAN, SUDAN
RNAV SID

Apt Elev 135	Trans alt: 7000
	RNP-1 required.

**PEKAB 1B [PEKA1B], PURAG 1B [PURA1B]
SENKA 1B [SENK1B]
RNAV DEPARTURES
(RWY 16)**



These SIDs require minimum climb gradients of
PEKAB 1B: 3.5% until 5300, then 3.3%.
PURAG 1B: 3.3%.
SENKA 1B: 3.4% until 1000, then 3.3%.

Gnd speed-KT	75	100	150	200	250	300
3.3% V/V (fpm)	251	334	501	668	835	1003
3.4% V/V (fpm)	258	344	516	689	861	1033
3.5% V/V (fpm)	266	354	532	709	886	1063

SID	ROUTING
PEKAB 1B	Climb on 163° track to PN802, turn RIGHT direct to PN850, then to PEKAB.
PURAG 1B	Climb on 163° track to PN802, turn LEFT direct to PSD, then to PN840, then to PURAG.
SENKA 1B	Climb on 163° track to PN802, turn LEFT direct to PSD, then to PN830, then to SENKA.

CHANGES: Track update.

HSPN/PZU
PORT SUDAN

JEPPESEN
17 MAR 23 (10-3D) Eff 23 Mar

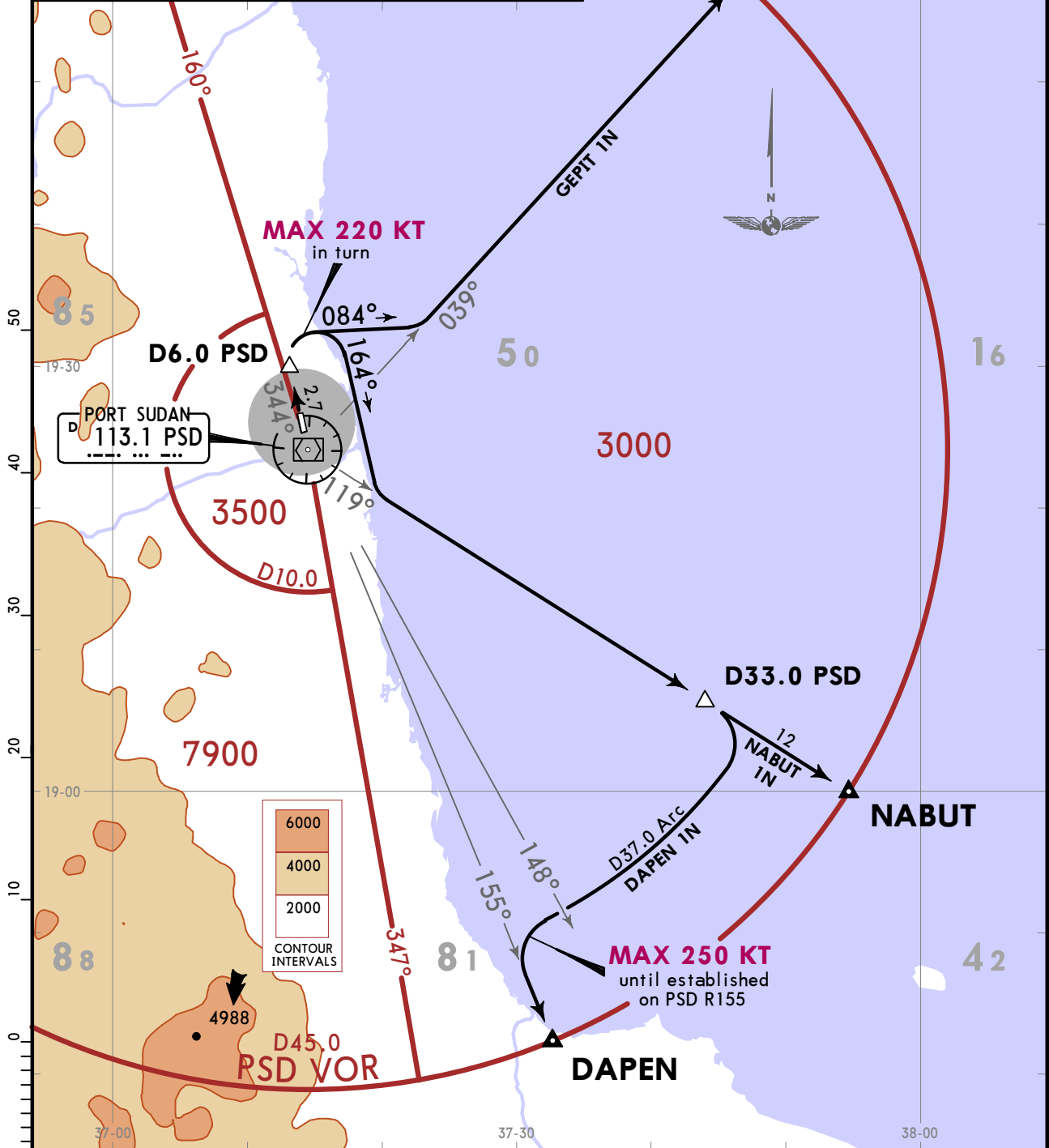
PORT SUDAN, SUDAN
SID

Apt Elev 135	Trans alt: 7000
	DME required.

**DAPEN 1N [DAPE1N], GEPIT 1N [GEP11N]
NABUT 1N [NABU1N]
DEPARTURES
(RWY 34)**

These SIDs require a minimum climb gradient of 3.3%.

Gnd speed-KT	75	100	150	200	250	300
3.3% V/V (fpm)	251	334	501	668	835	1003



SID	ROUTING
DAPEN 1N	Climb on PSD R344 to D6.0 PSD, turn RIGHT, 164° track, intercept PSD R119 to D33.0 PSD, turn RIGHT, along D37.0 Arc PSD, when passing PSD R148 turn LEFT, intercept PSD R155 to DAPEN.
GEPIT 1N	Climb on PSD R344 to D6.0 PSD, turn RIGHT, 084° track, intercept PSD R039 to GEPIT.
NABUT 1N	Climb on PSD R344 to D6.0 PSD, turn RIGHT, 164° track, intercept PSD R119 to NABUT.

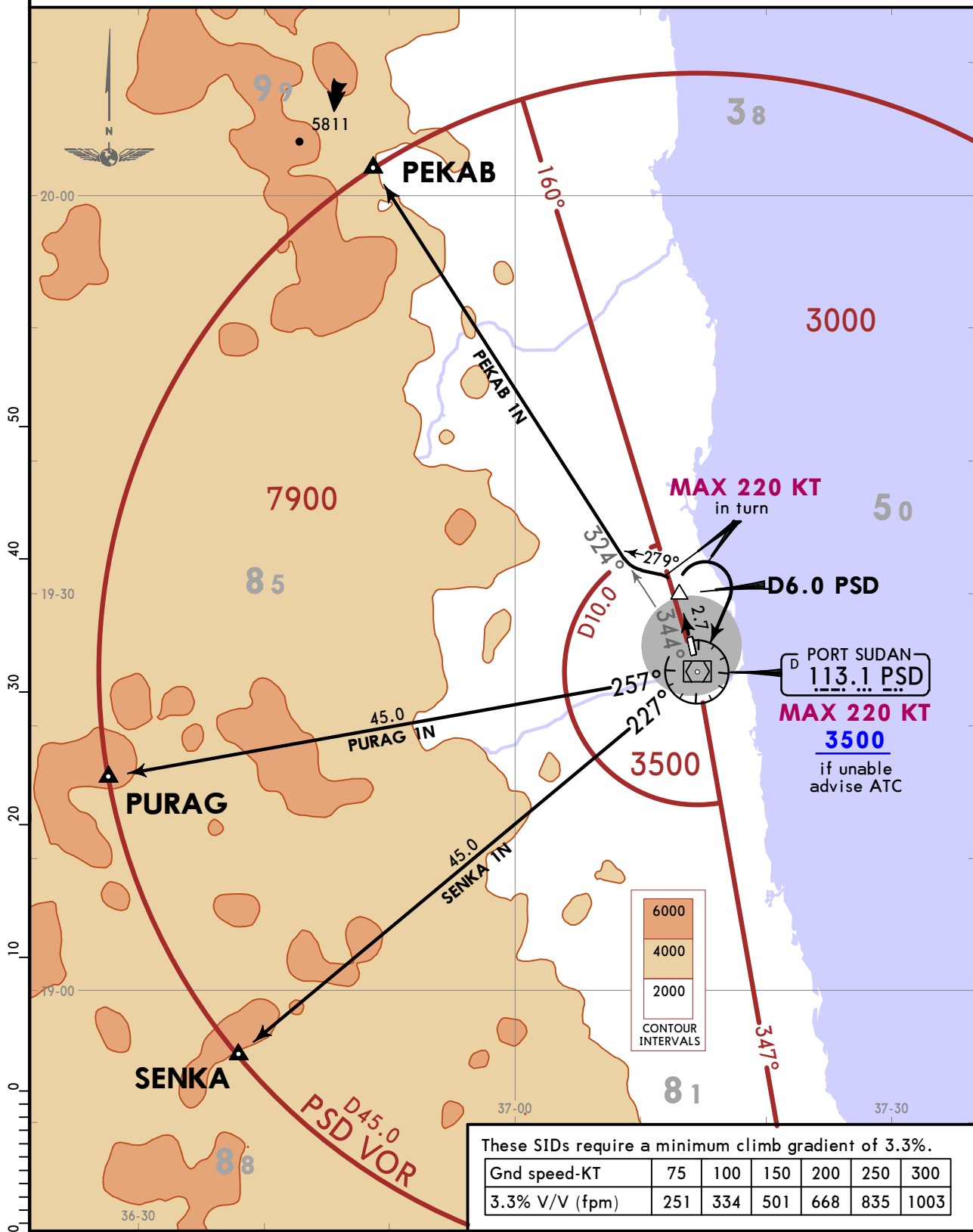
HSPN/PZU
PORT SUDAN

JEPPESEN
17 MAR 23 (10-3E) Eff 23 Mar

PORT SUDAN, SUDAN
SID

Apt Elev 135	Trans alt: 7000 DME required.
-----------------	----------------------------------

PEKAB 1N [PEKA1N], PURAG 1N [PURA1N]
SENKA 1N [SENK1N]
DEPARTURES
(RWY 34)



These SIDs require a minimum climb gradient of 3.3%.

Gnd speed-KT	75	100	150	200	250	300
3.3% V/V (fpm)	251	334	501	668	835	1003

SID	ROUTING
PEKAB 1N	Climb on PSD R344 to D6.0 PSD, turn LEFT, 279° track, intercept PSD R324 to PEKAB.
PURAG 1N	Climb on PSD R344 to D6.0 PSD, turn RIGHT direct to PSD, PSD R257 to PURAG.
SENKA 1N	Climb on PSD R344 to D6.0 PSD, turn RIGHT direct to PSD, PSD R227 to SENKA.

HSPN/PZU
PORT SUDAN

JEPPESEN

PORT SUDAN, SUDAN

17 MAR 23

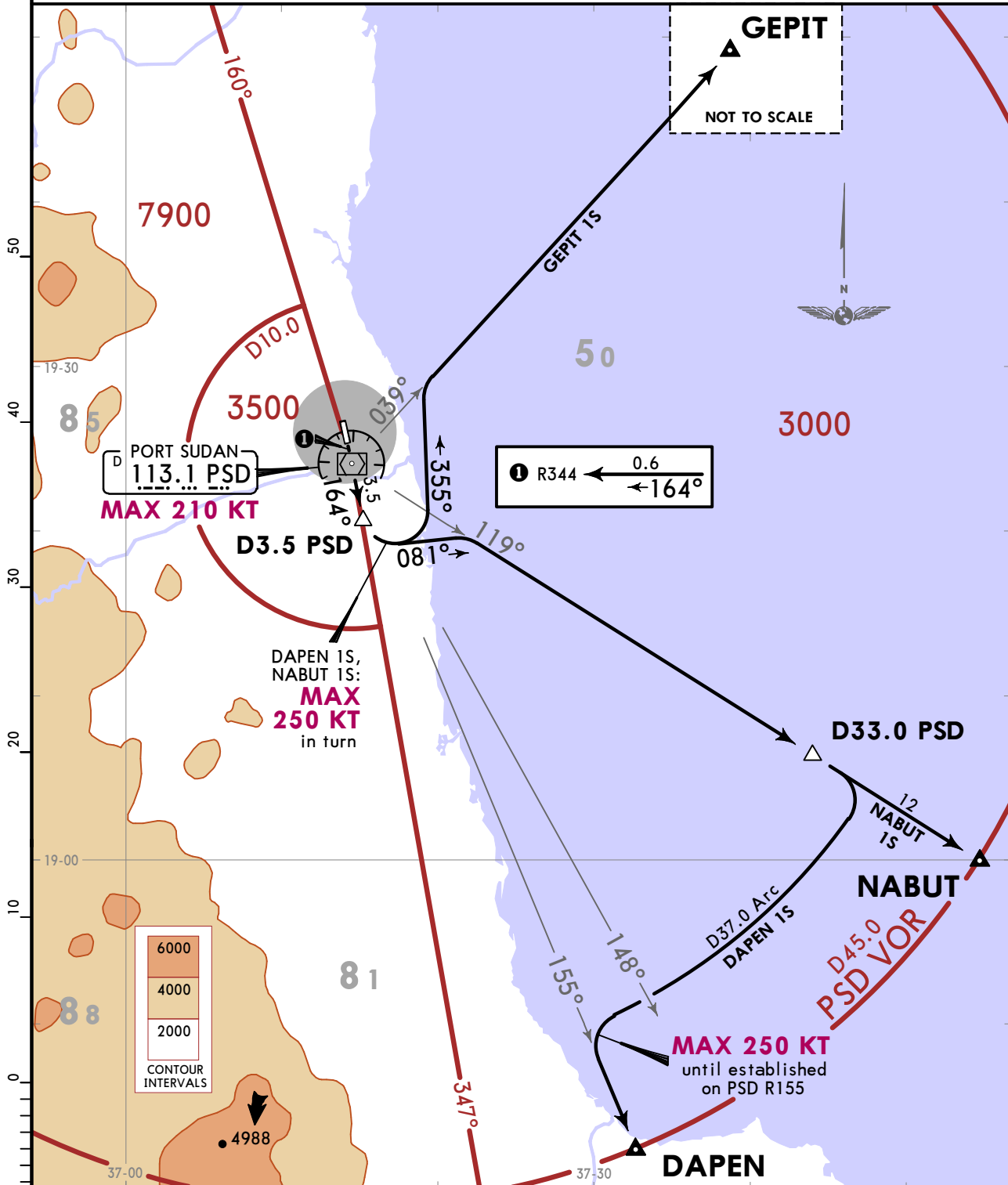
10-3F

Eff 23 Mar

SID

Apt Elev 135	Trans alt: 7000
	DME required.

**DAPEN 1S [DAPE1S], GEPIT 1S [GEP11S]
NABUT 1S [NABU1S]
DEPARTURES
(RWY 16)**



SID	ROUTING
DAPEN 1S	Climb on PSD R344 inbound to PSD, PSD R164 to D3.5 PSD, turn LEFT, 081° track, intercept PSD R119 to D33.0 PSD, turn RIGHT, along D37.0 Arc PSD, when passing PSD R148 turn LEFT, intercept PSD R155 to DAPEN.
GEPIT 1S	Climb on PSD R344 inbound to PSD, PSD R164 to D3.5 PSD, turn LEFT, 355° track, intercept PSD R039 to GEPIT.
NABUT 1S	Climb on PSD R344 inbound to PSD, PSD R164 to D3.5 PSD, turn LEFT, 081° track, intercept PSD R119 to NABUT.

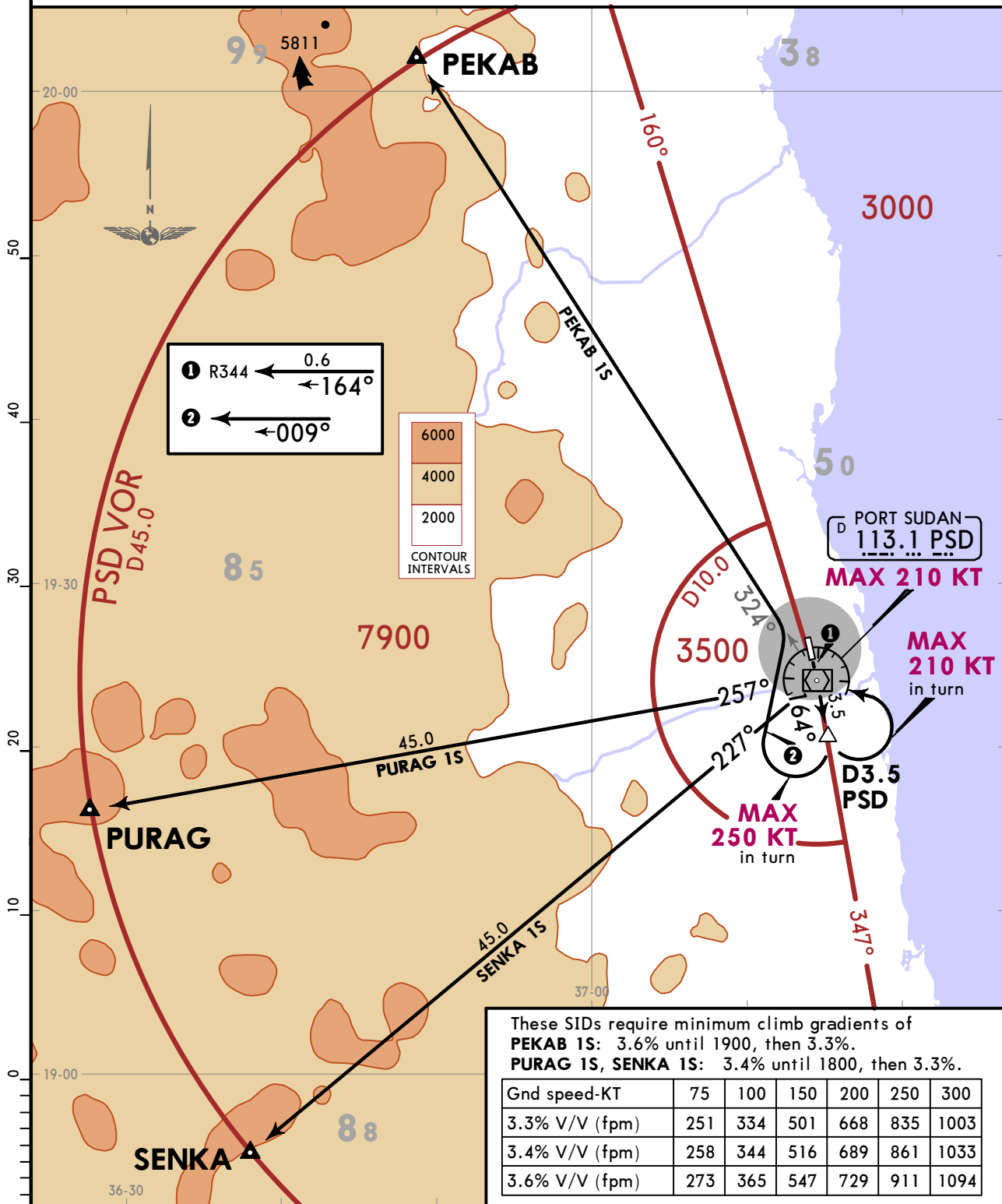
HSPN/PZU
PORT SUDAN

JEPPESEN
17 MAR 23 **(10-3G)** **Eff 23 Mar**

PORT SUDAN, SUDAN
SID

Apt Elev 135	Trans alt: 7000
	DME required.

**PEKAB 1S [PEKA1S], PURAG 1S [PURA1S]
SENKA 1S [SENK1S]
DEPARTURES
(RWY 16)**



SID	ROUTING
PEKAB 1S	Climb on PSD R344 inbound to PSD, PSD R164 to D3.5 PSD, turn RIGHT, 009° track, intercept PSD R324 to PEKAB.
PURAG 1S	Climb on PSD R344 inbound to PSD, PSD R164 to D3.5 PSD, turn LEFT direct to PSD, PSD R257 to PURAG.
SENKA 1S	Climb on PSD R344 inbound to PSD, PSD R164 to D3.5 PSD, turn LEFT direct to PSD, PSD R227 to SENKA.

HSPN/PZU

JEPPesen
17 MAR 23 **10-9S** Eff 23 Mar

EASA AIR OPS

PORT SUDAN, SUDAN
PORT SUDAN

STRAIGHT-IN RWY		A	B	C	D
16	RNP	385'(250')	385'(250')	385'(250')	390'(255')
	LNAV/VNAV	R1300m	R1300m	R1300m	R1300m
	① RNP	480'(345')	480'(345')	480'(345')	480'(345')
	LNAV	R1500m	R1500m	R1600m	R1600m
	① VOR Z	480'(345')	480'(345')	480'(345')	480'(345')
		R1500m	R1500m	R1600m	R1600m
	① VOR Y	550'(415')	550'(415')	550'(415')	550'(415')
		R1500m	R1500m	R1900m	R1900m
34	ILS Y	335'(200')	335'(200')	335'(200')	335'(200')
		R1200m	R1200m	R1200m	R1200m
	① LOC Y	440'(305')	440'(305')	440'(305')	440'(305')
		R1400m	R1400m	R1400m	R1400m
	RNP	385'(250')	390'(255')	400'(265')	410'(275')
	LNAV/VNAV	R1300m	R1300m	R1300m	R1300m
	① RNP	500'(365')	500'(365')	500'(365')	500'(365')
	LNAV	R1500m	R1500m	R1700m	R1700m
	① VOR Z	500'(365')	500'(365')	500'(365')	500'(365')
		R1500m	R1500m	R1700m	R1700m
	① VOR Y	710'(575')	710'(575')	710'(575')	710'(575')
		R1500m	R1500m	R2400m	R2400m

① Continuous Descent Final Approach.

CIRCLE-TO-LAND	100 KT	135 KT	180 KT	205 KT
	760'(625')	760'(625')	910'(775')	1070'(935')
	V1900m	V2800m	V3700m	V4600m

TAKE-OFF

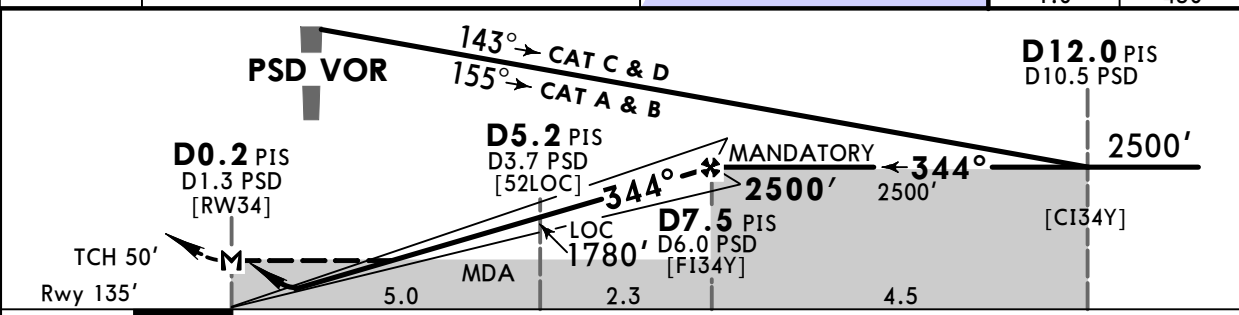
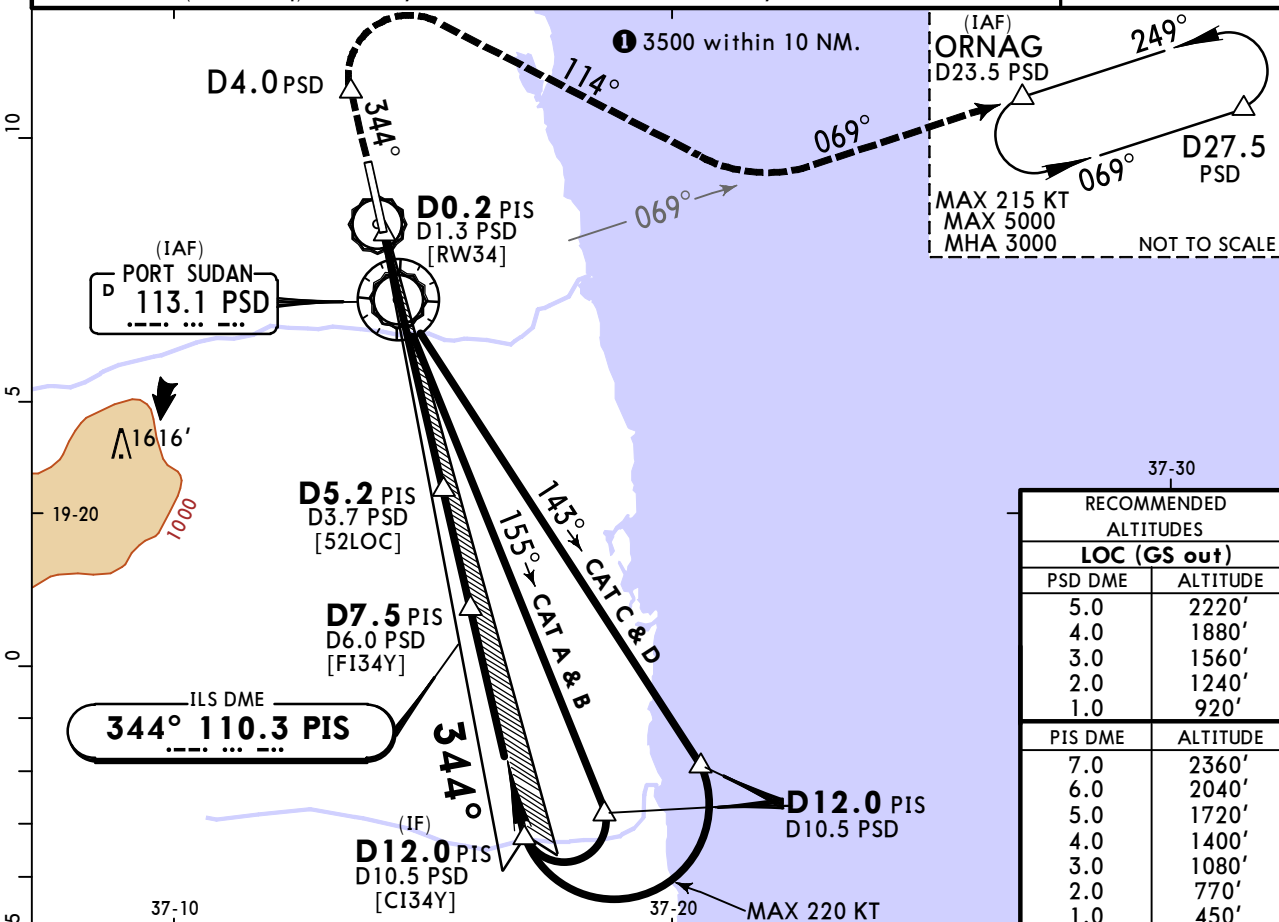
Low Visibility Take-off		RL or RCLM	RL	Adequate Vis Ref	
RL & RCLM	RL			DAY	NIGHT
DAY	NIGHT	DAY	NIGHT	DAY	NIGHT
R300m		R/V400m		R/V500m	NA

HSPN/PZU PORT SUDAN

JEPPESEN
17 MAR 23
Eff 23 Mar (11-1)

PORT SUDAN, SUDAN ILS Y or LOC Y Rwy 34

PORT SUDAN Approach			PORT SUDAN Tower		<p>MSA PSD VOR within 45 NM</p>
128.1			128.1		
LOC PIS 110.3	Final Apch Crs 344°	D7.5 PIS 2500' (1365')	ILS DA(H) 335' (200')	Apt Elev 135' Rwy 135'	
MISSED APCH: Climb to 3000' on R-344 PSD. AT D4.0 PSD turn RIGHT on 114° to intercept and follow R-069 PSD to join ORNAG holding. MAX 215 KT.					
Alt Set: hPa (IN on req)		Rwy Elev: 5 hPa	Trans level: By ATC	Trans alt: 7000'	



Gnd speed-Kts	70	90	100	120	140	160		ALS PAPI-L	215 KT MAX	D4.0 PSD on 113.1 R-344
ILS GS or LOC Descent Angle	3.00°									
MAP at D0.2 PIS/D1.3 PSD										

State	STRAIGHT-IN LANDING				CIRCLE-TO-LAND	
	ILS		LOC (GS out) CDFA		Max Kts	MDA(H)
	DA(H) 335' (200')		DA/MDA(H) 440' (305')			
	FULL	ALS out	ALS out			
A	R1200m		R1400m		100	760' (625') V1900m
B	R1200m		R1400m		135	760' (625') V2800m
C	R1200m		R1400m		180	910' (775') V3700m
D	R1200m		R1400m		205	1070' (935') V4600m

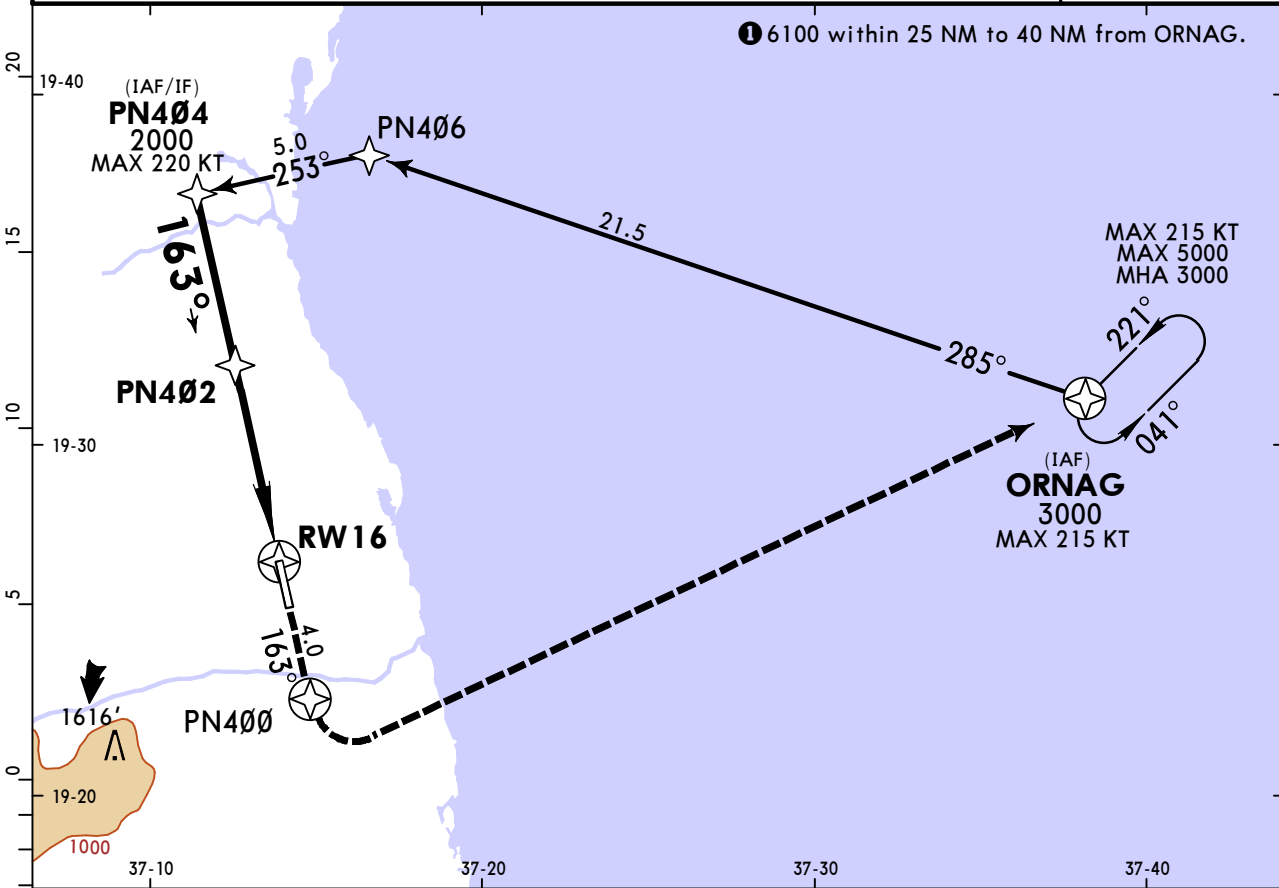
VNAV DA(H) in lieu of MDA(H) depends on operator policy.
 CHANGES: MSA, new AOM concept. © JEPPESEN, 2018, 2023. ALL RIGHTS RESERVED.

HSPN/PZU
PORT SUDAN

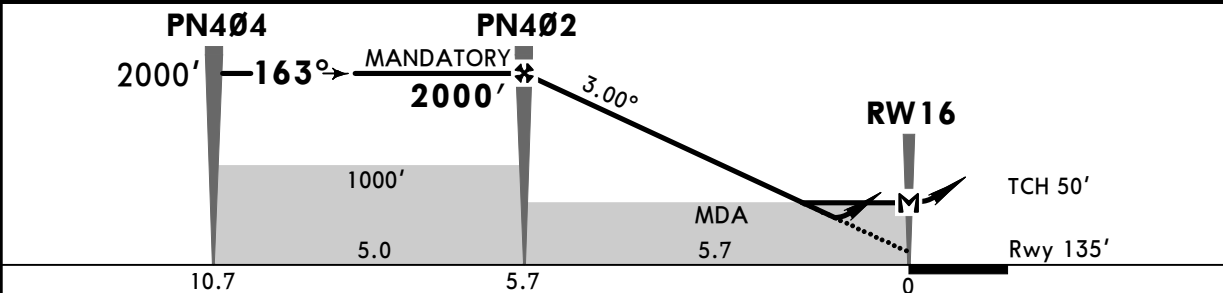
JEPPESEN
17 MAR 23 (12-1) Eff 23 Mar

PORT SUDAN, SUDAN
RNP Rwy 16

PORT SUDAN Approach				PORT SUDAN Tower	
128.1				128.1	
RNAV	Final Apch Crs 163°	PN402 MANDATORY 2000' (1865')	LNAV/VNAV DA(H) Refer to Minimums	Apt Elev 135'	
MISSED APCH: Climb to 3000' on 163° to PN400, then turn LEFT (MAX 215 KT) direct to ORNAG and hold, or as directed.					
Alt Set: hPa (IN on req) Rwy Elev: 5 hPa Trans level: By ATC Trans alt: 7000'					
Baro-VNAV not authorized below 10°C.					MSA ORNAG



DIST to RW16	5.0	4.0	3.0	2.0	1.0
ALTITUDE	1760'	1450'	1130'	820'	500'



Gnd speed-Kts	70	90	100	120	140	160	ALS PAPI-L	PN400 on 163°
Glide Path Angle	3.00°	372	478	531	637	743		
MAP at RW16								

PANS OPS	State		STRAIGHT-IN LANDING		CIRCLE-TO-LAND	
	LNAV/VNAV		LNAV CDFA			
	DA(H) ABC: 385' (250') D: 390' (255')		DA/MDA(H) 480' (345')			
	ALS out		ALS out		Max Kts	MDA(H)
A	R1300m		R1500m		100	760' (625') V1900m
B	R1300m		R1500m		135	760' (625') V2800m
C	R1300m		R1600m		180	910' (775') V3700m
D	R1300m		R1600m		205	1070' (935') V4600m

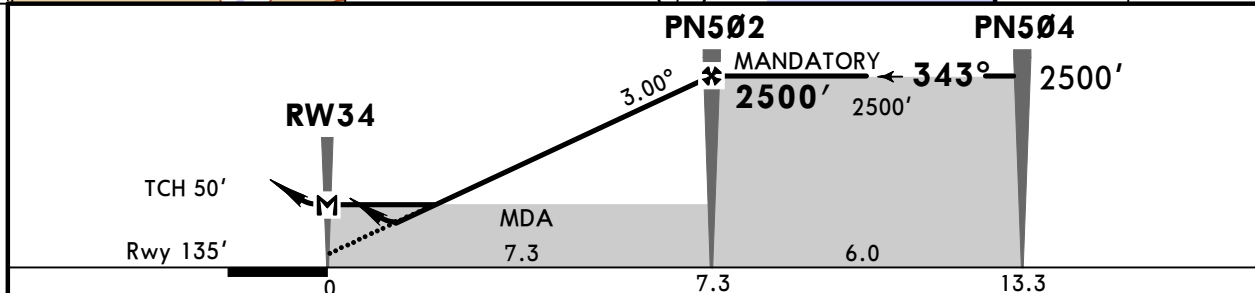
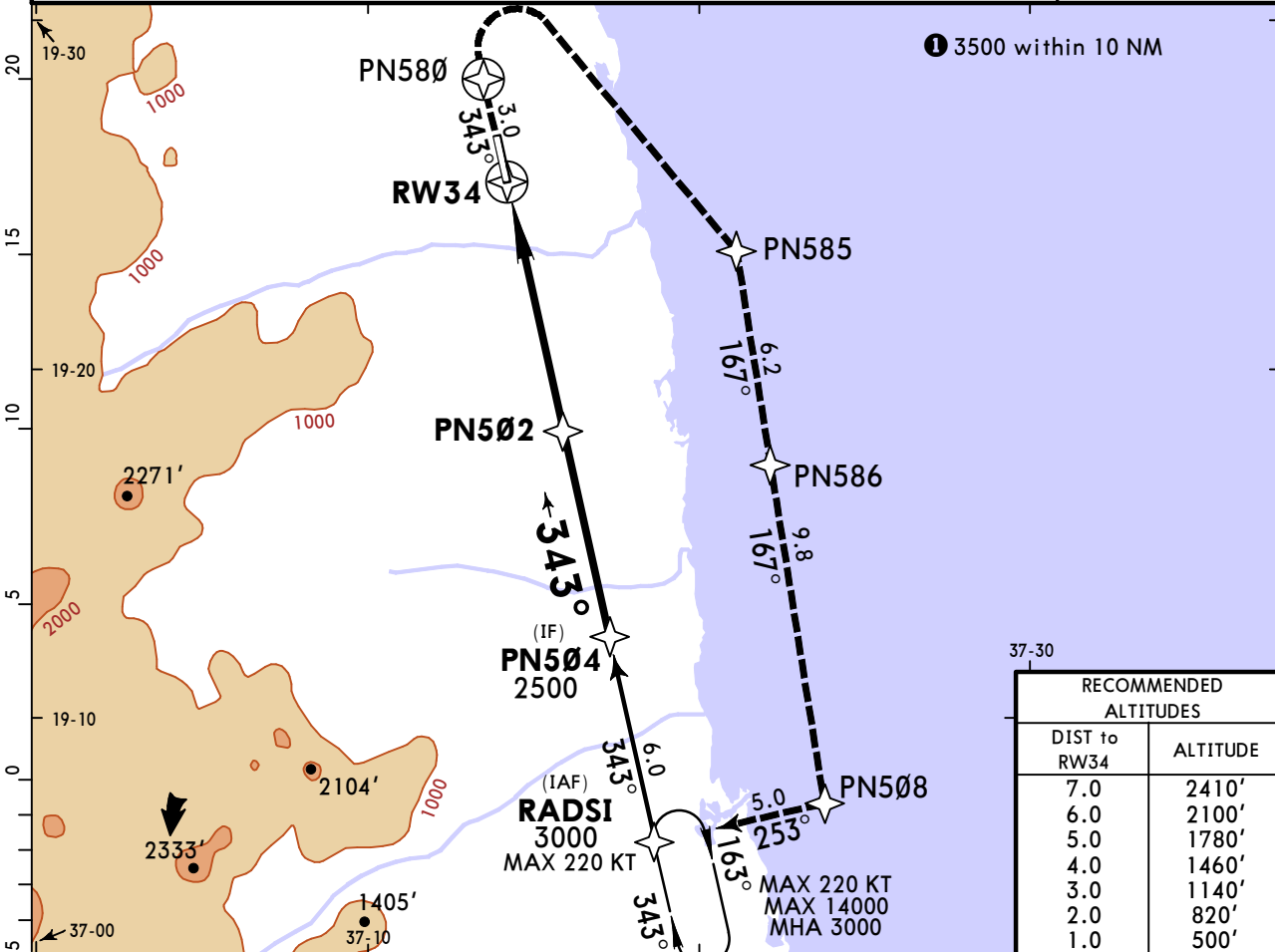
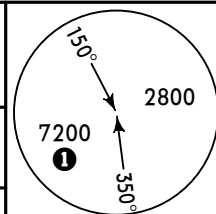
CHANGES: Procedure, new AOM concept. © JEPPESEN, 2018, 2023. ALL RIGHTS RESERVED.

HSPN/PZU PORT SUDAN

JEPPESEN
17 MAR 23 (12-2) Eff 23 Mar

PORT SUDAN, SUDAN RNP Rwy 34

PORT SUDAN Approach				PORT SUDAN Tower	
128.1				128.1	
RNAV	Final Apch Crs 343°	PN502 MANDATORY 2500' (2365')	LNAV/VNAV DA(H) Refer to Minimums	Apt Elev 135'	Rwy 135'
MISSED APCH: Climb to 3000' on 343° to PN580, then turn RIGHT direct to PN585, then to PN586, then to PN508, then to RADSI. MAX 220 KT.					
Alt Set: hPa (IN on req) Rwy Elev: 5 hPa Trans level: BY ATC Trans alt: 7000'					
Baro-VNAV not authorized below 10°C.					
					MSA RADSI



Gnd speed-Kts	70	90	100	120	140	160	ALS PAPI-L	220 KT MAX	PN580 on 343°
Glide Path angle	3.00°	372	478	531	637	743			
MAP at RW34									

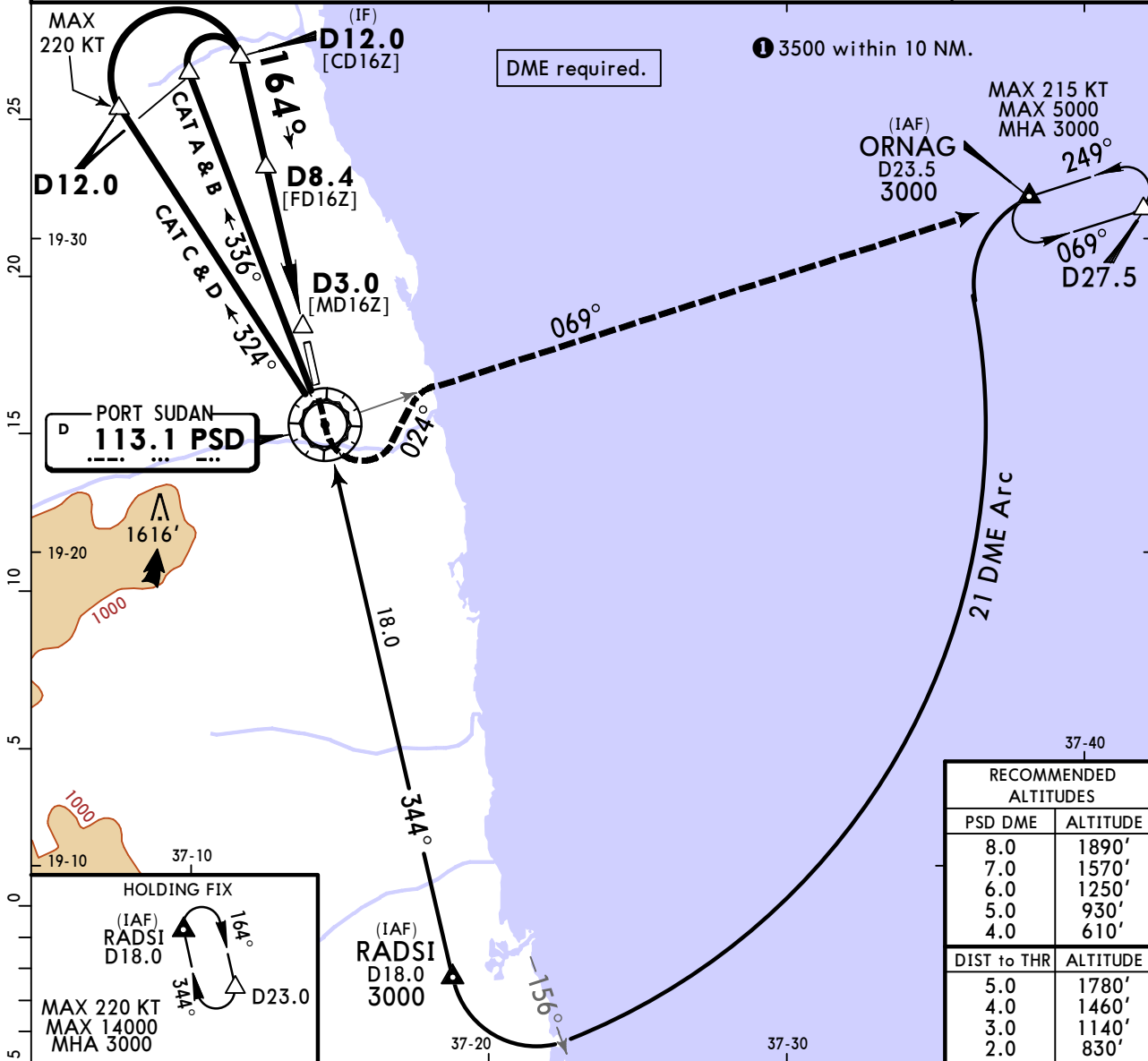
State	STRAIGHT-IN LANDING		CIRCLE-TO-LAND	
	LNAV/VNAV	LNAV CDFA	LNAV	CIRCLE-TO-LAND
	DA(H) A: 385' (250') C: 400' (265') B: 390' (255') D: 410' (275')	DA/MDA(H) 500' (365')		
	ALS out	ALS out	Max Kts	MDA(H)
A	R1300m	R1500m	100	760' (625') V1900m
B			135	760' (625') V2800m
C			180	910' (775') V3700m
D			205	1070' (935') V4600m

HSPN/PZU PORT SUDAN

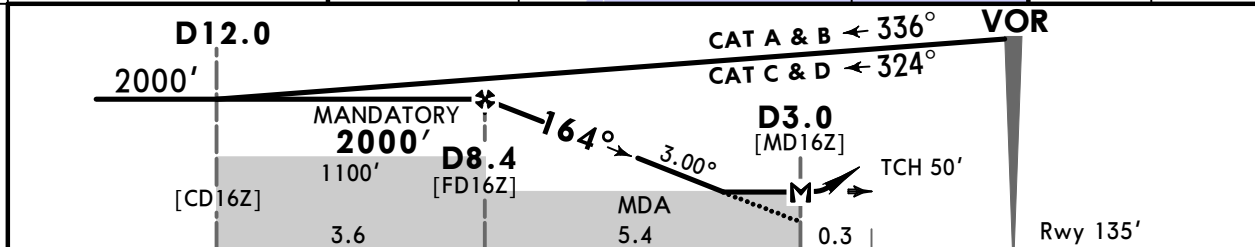
JEPPESEN
17 MAR 23 **(13-1)** **Eff 23 Mar**

PORT SUDAN, SUDAN VOR Z Rwy 16

PORT SUDAN Approach 128.1			PORT SUDAN Tower 128.1		<p>MSA PSD VOR within 45 NM</p>
VOR PSD 113.1	Final Apch Crs 164°	D8.4 MANDATORY 2000' (1865')	DA/MDA(H) 480' (345')	Apt Elev 135' Rwy 135'	
MISSED APCH: Climb on R-344 to 3000'. When over VOR, turn LEFT onto 024° to intercept and follow R-069 to join holding. MAX 215 KT.					
Alt Set: hPa (IN on req)		Rwy Elev: 5 hPa	Trans level: BY ATC	Trans alt: 7000'	



RECOMMENDED ALTITUDES	
PSD DME	ALTITUDE
8.0	1890'
7.0	1570'
6.0	1250'
5.0	930'
4.0	610'
DIST to THR	ALTITUDE
5.0	1780'
4.0	1460'
3.0	1140'
2.0	830'



Gnd speed-Kts	70	90	100	120	140	160		ALS	215 KT	PSD	PSD
Descent Angle	3.00°	372	478	531	637	743	849	PAPI-L	MAX	113.1	on 113.1
MAP at D3.0										↑	R-344

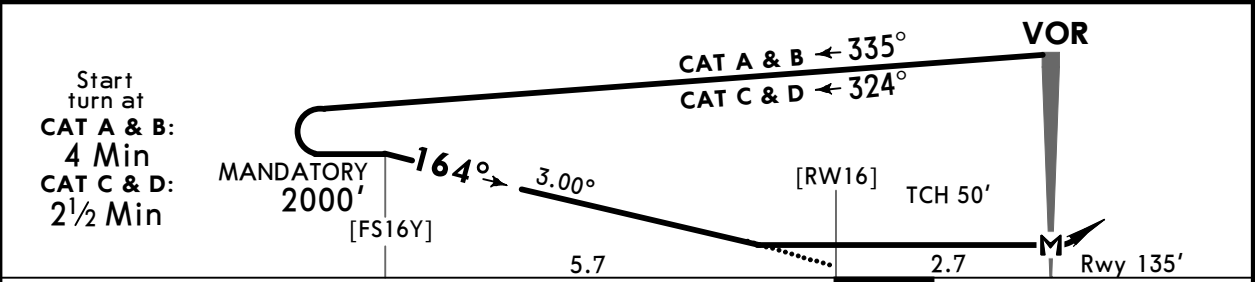
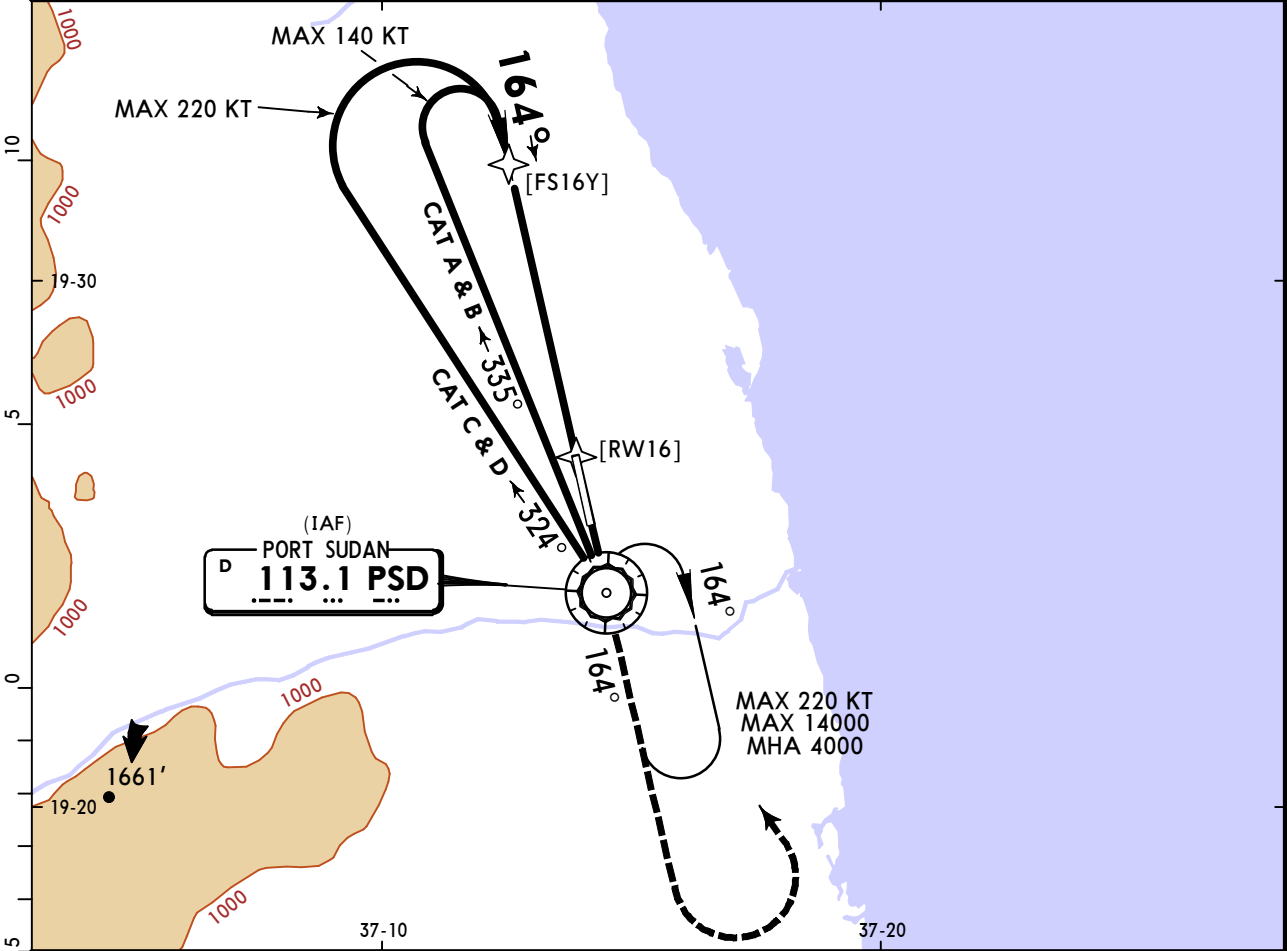
State	STRAIGHT-IN LANDING		CIRCLE-TO-LAND	
	CDFA	DA/MDA(H)	Max Kts	MDA(H)
		480' (345')	100	760' (625')
A/B	R1500m		135	760' (625')
C/D	R1600m		180	910' (775')
			205	1070' (935')

HSPN/PZU PORT SUDAN

JEPPESSEN
17 MAR 23 **13-2** Eff 23 Mar

PORT SUDAN, SUDAN VOR Y Rwy 16

PORT SUDAN Approach				PORT SUDAN Tower		
128.1				128.1		
VOR PSD 113.1	Final Apch Crs 164°	No FAF	DA/MDA(H) 550' (415')	Apt Elev 135'	Rwy 135'	
MISSED APCH: Climb on R-164. At 2500' turn LEFT direct to VOR up to 4000' and join holding. MAX 220 KT.						
Alt Set: hPa (IN on req)				Rwy Elev: 5 hPa	Trans level: By ATC	



Gnd speed-Kts	70	90	100	120	140	160	ALS PAPI-L	220 KT MAX	2500' ↑	PSD on 113.1 R-164
Descent Angle 3.00°	372	478	531	637	743	849				
MAP at VOR										

PANS OPS	State	STRAIGHT-IN LANDING	CIRCLE-TO-LAND
		CDFA	
		DA/MDA(H) 550' (415')	
		ALS out	Max Kts
	A	R1500m	100
B		135	760' (625') V2800m
C	R1900m	180	910' (775') V3700m
D		205	1070' (935') V4600m

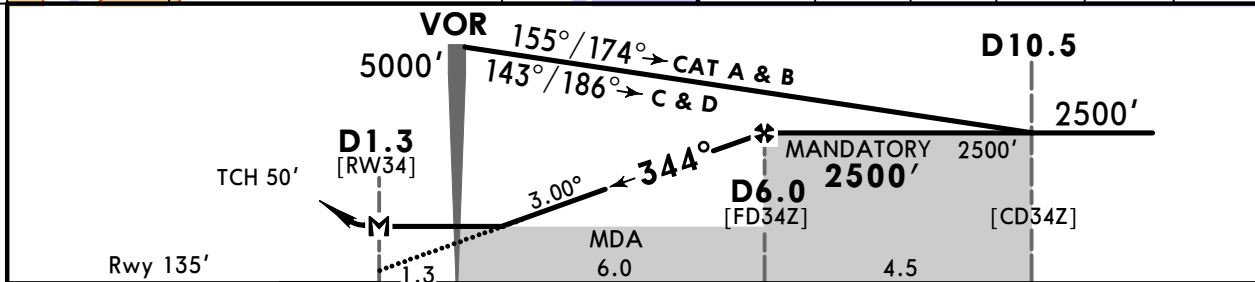
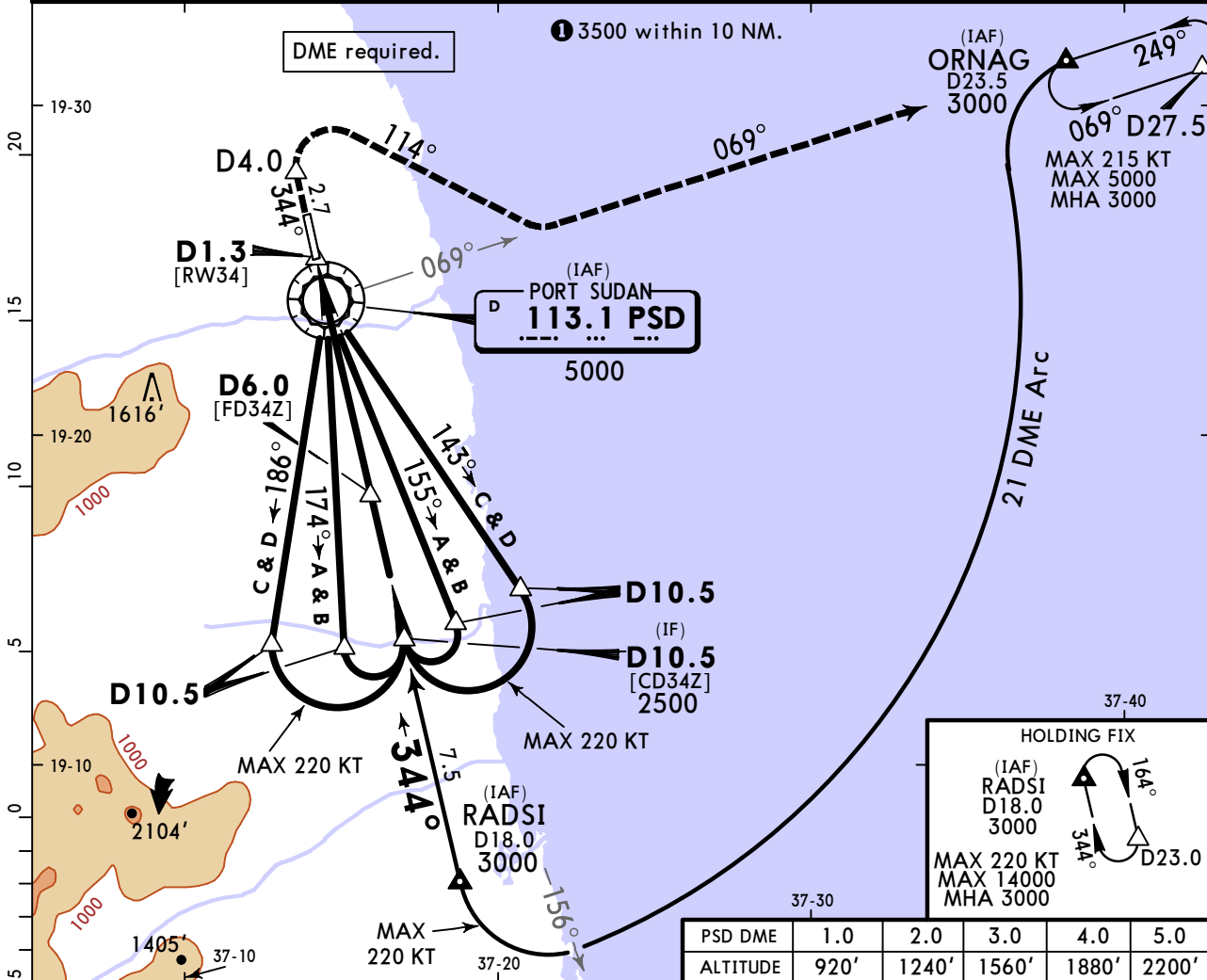
■ VNAV DA(H) in lieu of MDA(H) depends on operator policy.
CHANGES: New AOM concept. © JEPPESSEN, 2018, 2023. ALL RIGHTS RESERVED.

HSPN/PZU PORT SUDAN

JEPPESEN
17 MAR 23 (13-3) Eff 23 Mar

PORT SUDAN, SUDAN VOR Z Rwy 34

PORT SUDAN Approach 128.1			PORT SUDAN Tower 128.1		
VOR PSD 113.1	Final Apch Crs 344°	D6.0 MANDATORY 2500' (2365')	DA/MDA(H) 500' (365')	Apt Elev 135' Rwy 135'	
MISSED APCH: Climb to 3000' on R-344. At D4.0 turn RIGHT onto 114° to intercept and follow R-069 to join ORNAG holding. MAX 215 KT. Alt Set: hPa (IN on req) Rwy Elev: 5 hPa Trans level: By ATC Trans alt: 7000'					



Gnd speed-Kts	70	90	100	120	140	160	ALS PAPI-L	215 KT MAX	D4.0 PSD on 113.1 ↑ R-344	
Descent Angle	3.00°	372	478	531	637	849				
MAP at D1.3										

PANS OPS	State STRAIGHT-IN LANDING				CIRCLE-TO-LAND			
	CDFA							
	DA/MDA(H) 500' (365')				ALS out			
	A	R1500m			Max Kts	MDA(H)		
	B	R1500m			100	760' (625') V1900m		
C	R1700m			135	760' (625') V2800m			
D	R1700m			180	910' (775') V3700m			
	R1700m			205	1070' (935') V4600m			

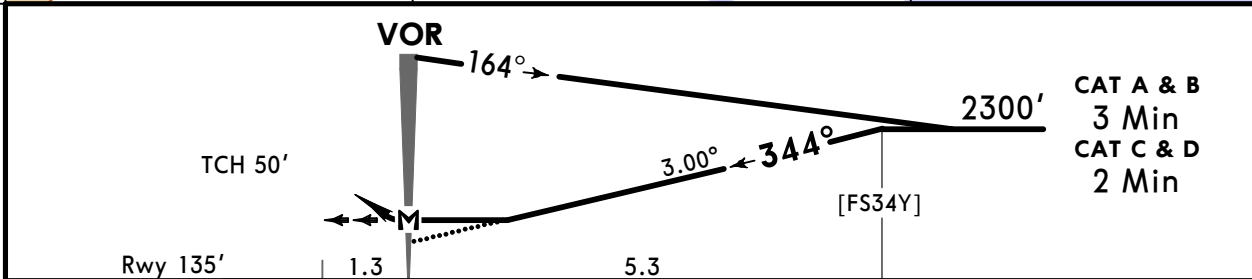
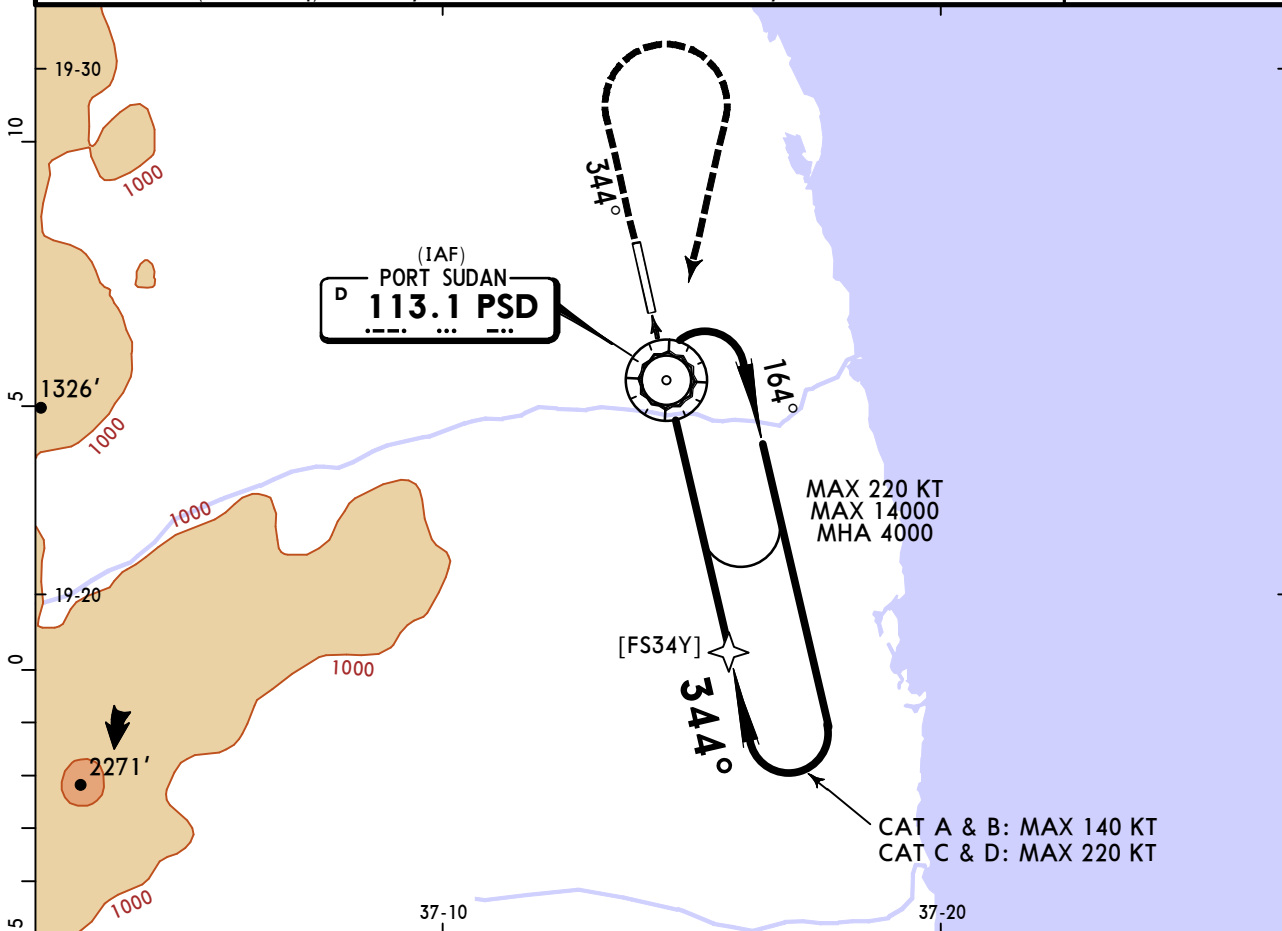
■ VNAV DA(H) in lieu of MDA(H) depends on operator policy.
 CHANGES: MSA, new AOM concept. © JEPPESEN, 2018, 2023. ALL RIGHTS RESERVED.

HSPN/PZU
PORT SUDAN

JEPPESEN
17 MAR 23 **(13-4)** **Eff 23 Mar**

PORT SUDAN, SUDAN
VOR Y Rwy 34

PORT SUDAN Approach				PORT SUDAN Tower		
128.1				128.1		
VOR PSD 113.1	Final Apch Crs 344°	No FAF	DA/MDA(H) 710' (575')	Apt Elev 135'	Rwy 135'	
MISSED APCH: Climb on R-344. At 1500' turn RIGHT direct to VOR up to 4000' to join holding. MAX 220 KT. If unable to reach 4000' over VOR, continue to climb to 4000' in holding.						
Alt Set: hPa (IN on req)		Rwy Elev: 5 hPa	Trans level: By ATC	Trans alt: 7000'		MSA PSD VOR



Gnd speed-Kts	70	90	100	120	140	160	ALS PAPI-L	220 KT MAX	1500' ↑	PSD on 113.1 R-344
Descent Angle	3.00°	372	478	531	637	743				
MAP at VOR										

PANS OPS	State	STRAIGHT-IN LANDING				CIRCLE-TO-LAND				
		CDFA								
		DA/MDA(H) 710' (575')								
		ALS out				Max Kts	MDA(H)			
	A	R1500m				100	760' (625')	V1900m		
B					135	760' (625')	V2800m			
C	R2400m				180	910' (775')	V3700m			
D					205	1070' (935')	V4600m			

V VNAV DA(H) in lieu of MDA(H) depends on operator policy.

Chart changes since cycle 15-2023

ADD = added chart, REV = revised chart, DEL = deleted chart.

ACT	PROCEDURE IDENT	INDEX	REV DATE	EFF DATE
-----	-----------------	-------	----------	----------

PORT SUDAN, (PORT SUDAN - HSPN)

TERMINAL CHART CHANGE NOTICES

No Chart Change Notices for Airport HSPN