

List of pages in this Trip Kit

Trip Kit Index

Airport Information For ESNQ

Terminal Charts For ESNQ

Revision Letter For Cycle 20-2019

Change Notices

Notebook

General Information

Location: KIRUNA SWE
ICAO/IATA: ESNQ / KRN
Lat/Long: N67° 49.3', E020° 20.1'
Elevation: 1509 ft

Airport Use: Public
Daylight Savings: Observed
UTC Conversion: -1:00 = UTC
Magnetic Variation: 10.0° E

Fuel Types: Jet A-1
Repair Types: Minor Airframe, Minor Engine
Customs: Yes
Airport Type: IFR
Landing Fee: No
Control Tower: Yes
Jet Start Unit: No
LLWS Alert: No
Beacon: No

Sunrise: 0544 Z
Sunset: 1505 Z

Runway Information

Runway: 03
Length x Width: 8209 ft x 148 ft
Surface Type: asphalt
TDZ-Elev: 1509 ft
Lighting: Edge, ALS

Runway: 21
Length x Width: 8209 ft x 148 ft
Surface Type: asphalt
TDZ-Elev: 1444 ft
Lighting: Edge, ALS

Communication Information

Kiruna Tower: 130.155 VHF-DF

ESNQ/KRN
KIRUNA

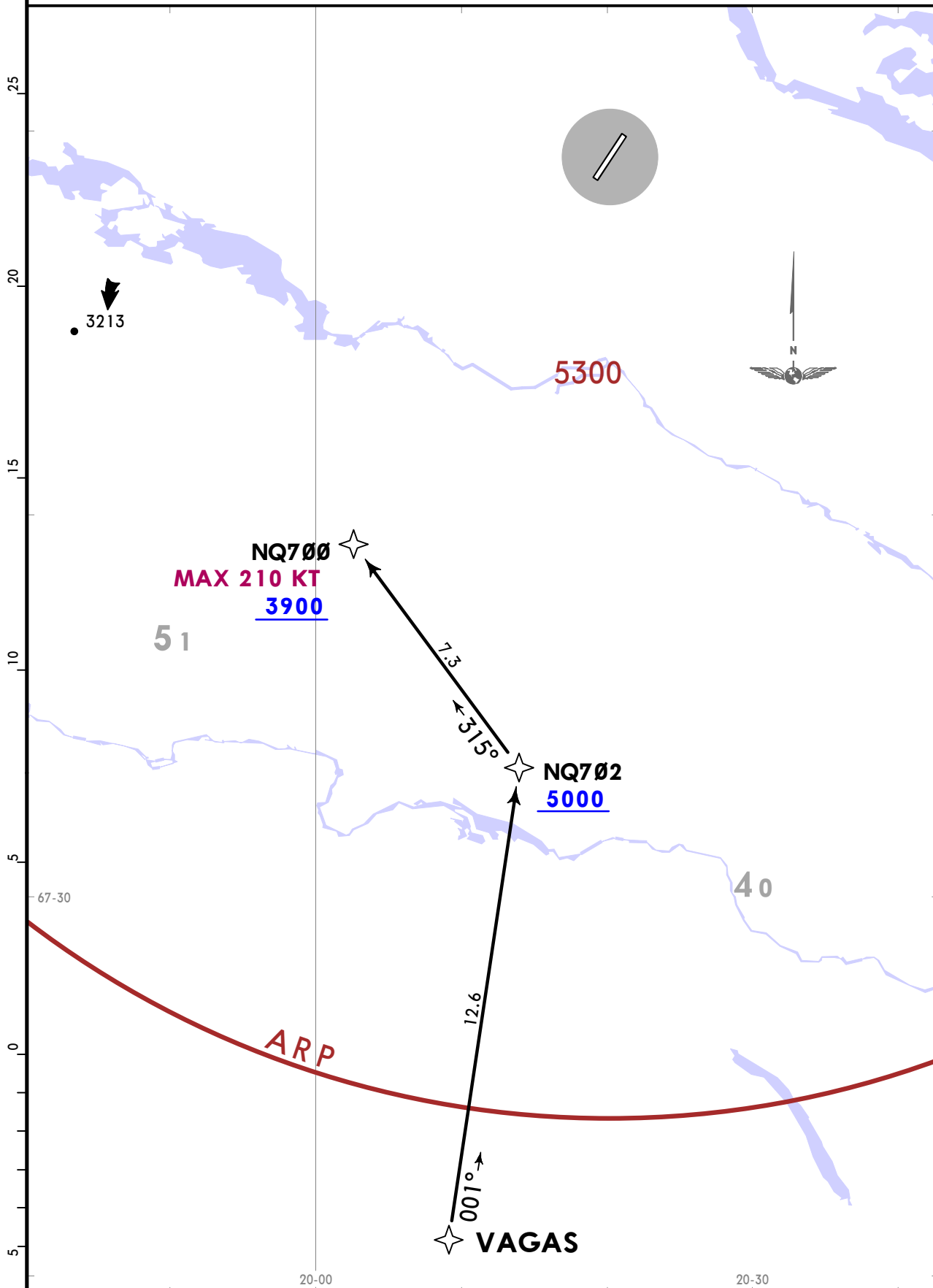
JEPPESEN
5 JUL 19 10-2

KIRUNA, SWEDEN
RNAV STAR

Apt Elev
1509

Alt Set: hPa Trans level: By ATC
RNP 1 (GNSS).

VAGAS 1R [VAGA1R]
RWY 03 RNAV ARRIVAL



ROUTING

VAGAS - NQ702 (5000+) - NQ700 (K210-; 3900+).

ESNQ/KRN
KIRUNA

JEPPESEN
5 JUL 19 (10-2A)

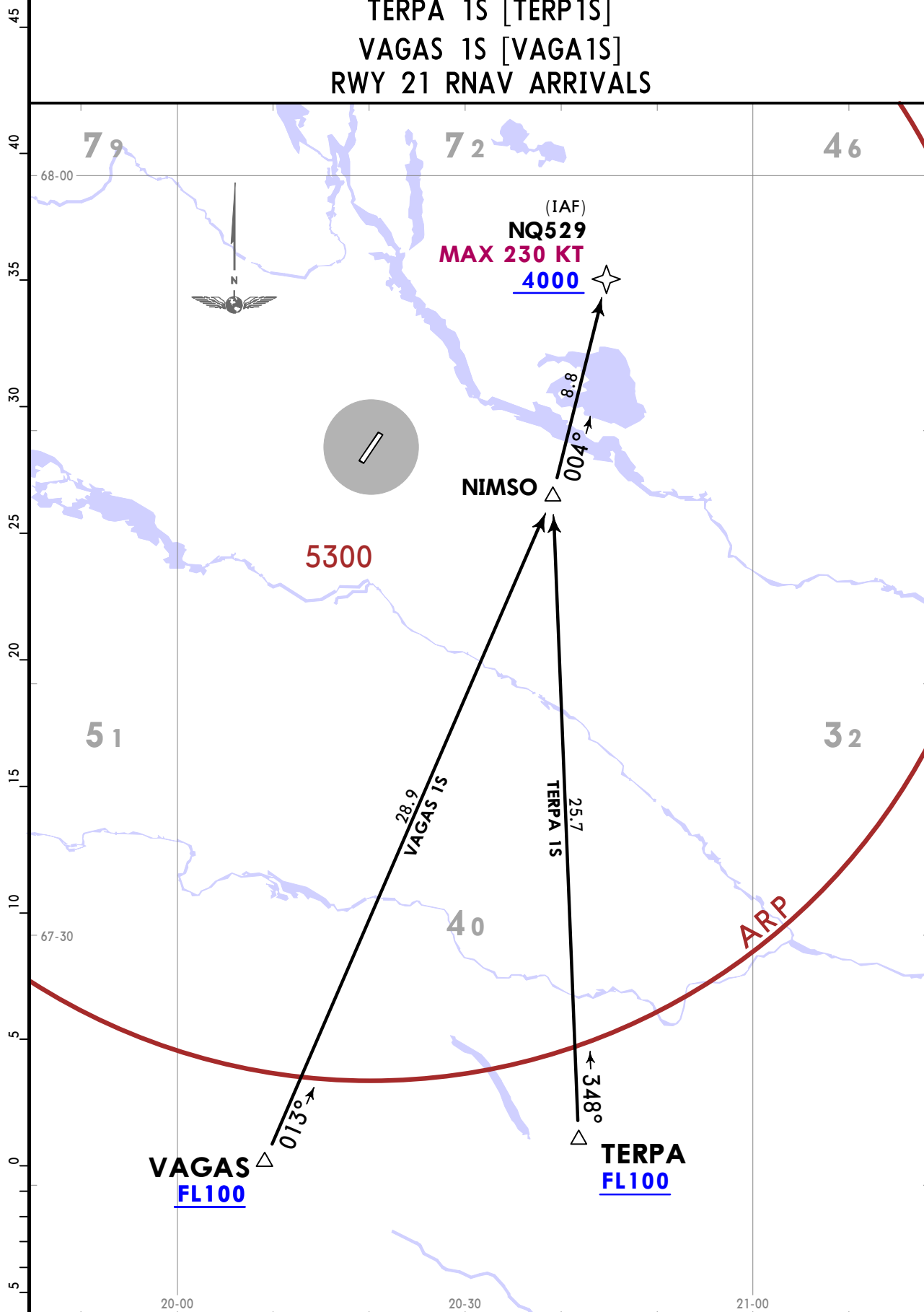
KIRUNA, SWEDEN
RNAV STAR

Apt Elev
1509

Alt Set: hPa Trans level: By ATC

1. RNP 1.
2. RNP STAR only to be used in conjunction with RNP RWY 21 via IAF NQ529.

TERPA 1S [TERP1S]
VAGAS 1S [VAGA1S]
RWY 21 RNAV ARRIVALS



STAR	ROUTING
TERPA 1S	TERPA (FL100+) - NIMSO - NQ529 (K230-; 4000+).
VAGAS 1S	VAGAS (FL100+) - NIMSO - NQ529 (K230-; 4000+).

CHANGES: MSA raised.

© JEPPESEN, 2019. ALL RIGHTS RESERVED.

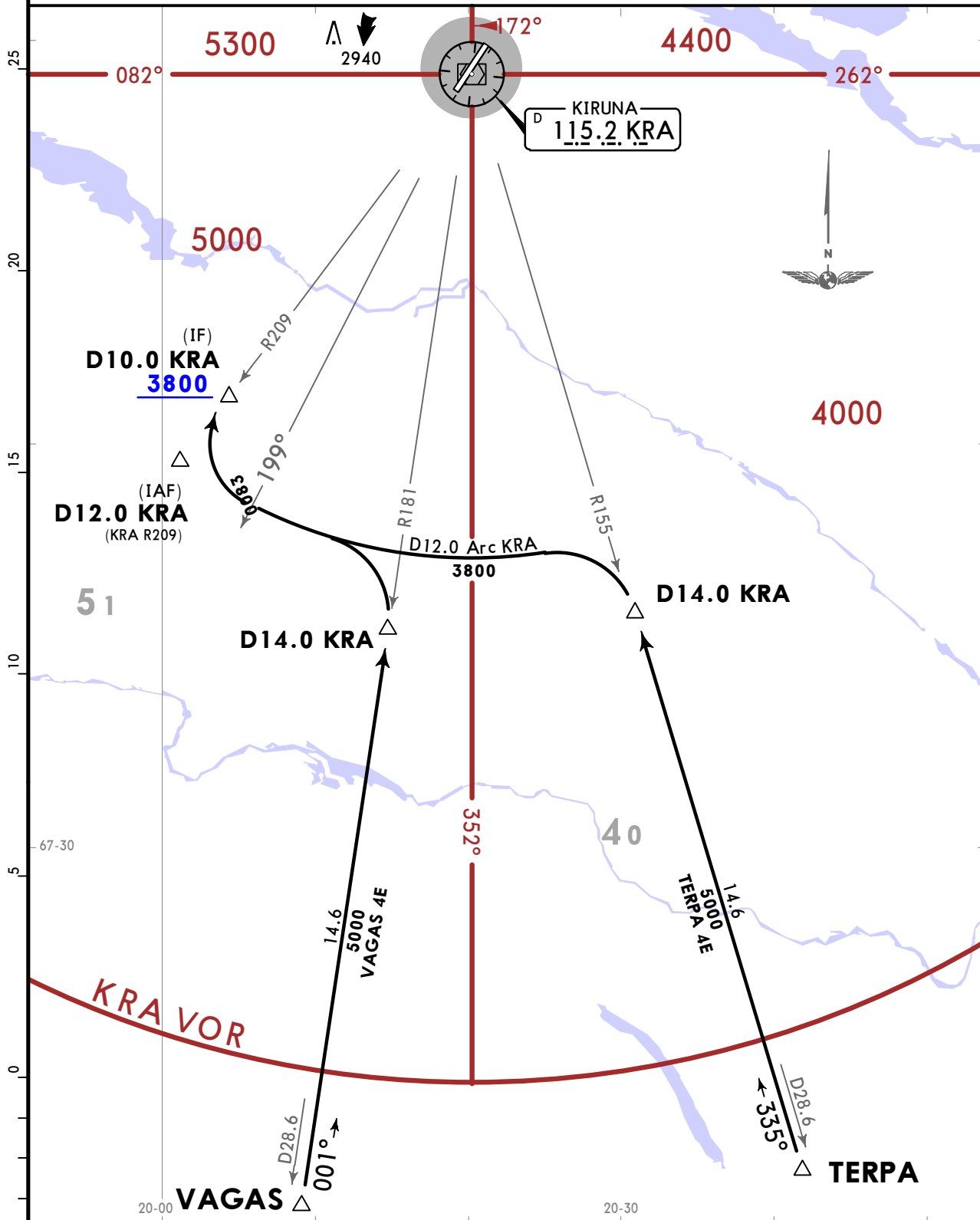
ESNQ/KRN
KIRUNA

JEPPESEN
18 JAN 19 **10-2B** Eff 31 Jan

KIRUNA, SWEDEN
STAR

Apt Elev 1509
Alt Set: hPa Trans level: By ATC

TERPA 4E [TERP4E]
VAGAS 4E [VAGA4E]
RWY 03 ARRIVALS



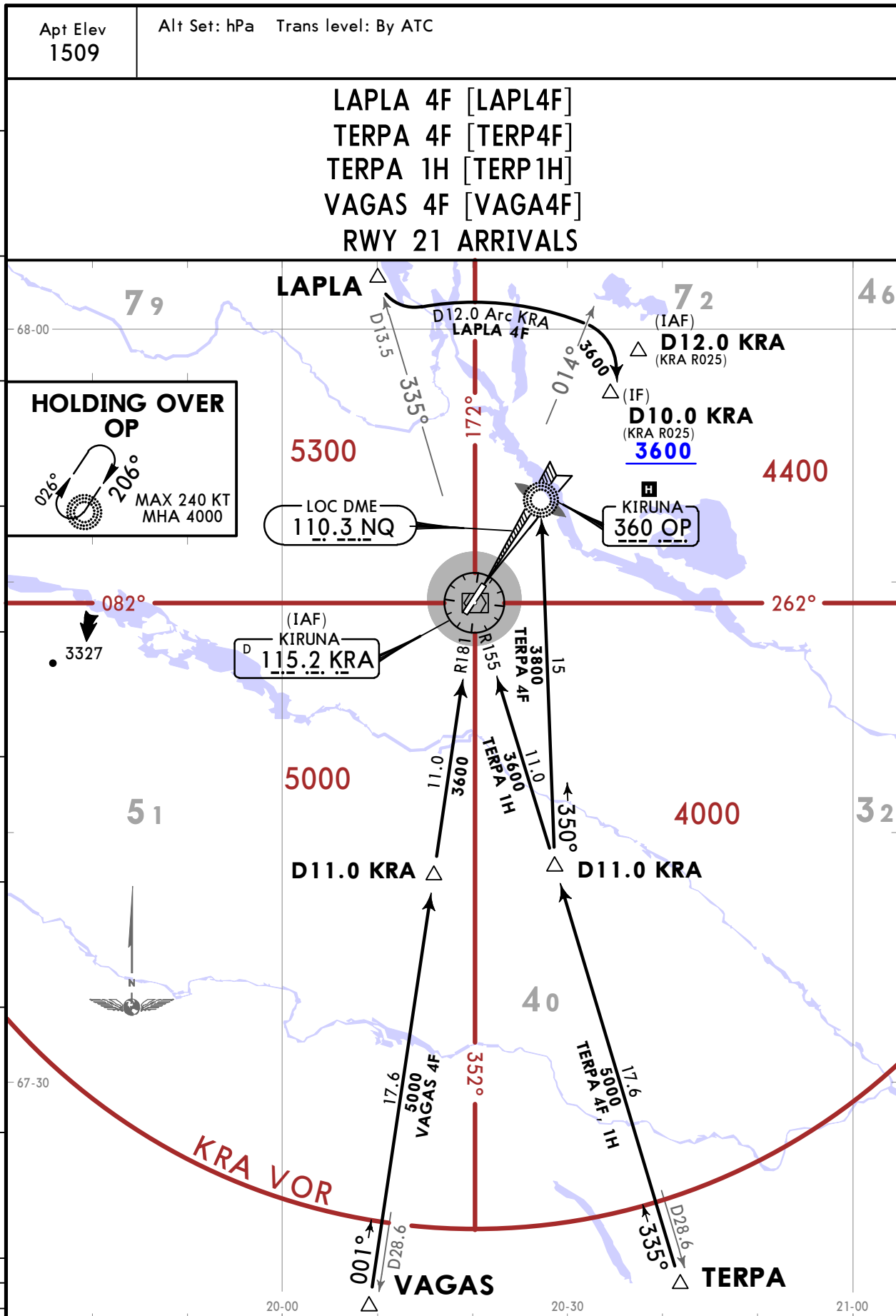
STAR	ROUTING
TERPA 4E	Intercept KRA R155 inbound, not below 5000 until D14.0 KRA, turn LEFT, along D12.0 Arc KRA, when passing KRA R199 turn RIGHT, intercept KRA R209 inbound not below 3800 until D10.0 KRA.
VAGAS 4E	Intercept KRA R181 inbound, not below 5000 until D14.0 KRA, turn LEFT, along D12.0 Arc KRA, when passing KRA R199 turn RIGHT, intercept KRA R209 inbound not below 3800 until D10.0 KRA.

CHANGES: STARS renumbered & revised; MSA.

ESNQ/KRN
KIRUNA

JEPPESEN
18 JAN 19 **(10-2C)** Eff 31 Jan

KIRUNA, SWEDEN
STAR



STAR	ROUTING
LAPLA 4F	Turn LEFT, along D12.0 Arc KRA, when passing KRA R014 turn RIGHT, intercept LOC NQ not below 3600 until D10.0 KRA.
TERPA 4F	Intercept KRA R155 inbound, not below 5000 until D11.0 KRA, turn RIGHT, intercept 350° bearing to OP not below 3800.
TERPA 1H	Intercept KRA R155 inbound, not below 5000 until D11.0 KRA, proceed not below 3600 to KRA.
VAGAS 4F	Intercept KRA R181 inbound, not below 5000 until D11.0 KRA, proceed not below 3600 to KRA.

ESNQ/KRN
KIRUNA

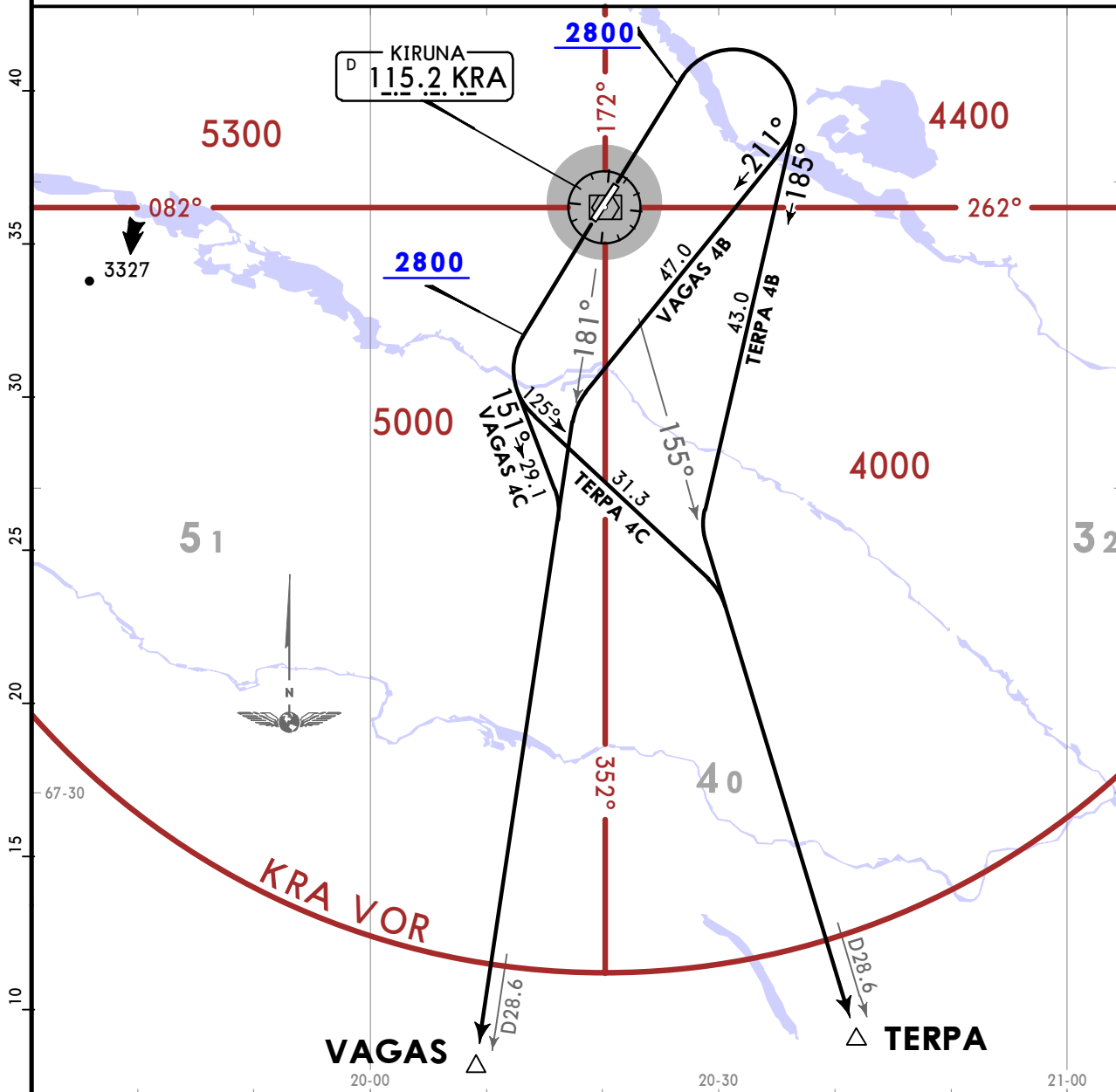
JEPPESEN
18 JAN 19 10-3 Eff 31 Jan

KIRUNA, SWEDEN
SID

Apt Elev
1509

Trans alt: 6000

TERPA 4B [TERP4B], TERPA 4C [TERP4C]
VAGAS 4B [VAGA4B], VAGAS 4C [VAGA4C]
DEPARTURES



These SIDs require a minimum climb gradient of 401 per NM (6.6%).

Gnd speed-KT	75	100	150	200	250	300
401 per NM	501	668	1003	1337	1671	2005

If unable to comply advise ATC.

SID	RWY	ROUTING
TERPA 4B	03	Climb straight ahead to 2800, turn RIGHT, 185° track, intercept KRA R155 to TERPA.
TERPA 4C	21	Climb straight ahead to 2800, turn LEFT, 125° track, intercept KRA R155 to TERPA.
VAGAS 4B	03	Climb straight ahead to 2800, turn RIGHT, 211° track, intercept KRA R181 to VAGAS.
VAGAS 4C	21	Climb straight ahead to 2800, turn LEFT, 151° track, intercept KRA R181 to VAGAS.

RWYS 03, 21
OMNIDIRECTIONAL DEPARTURES

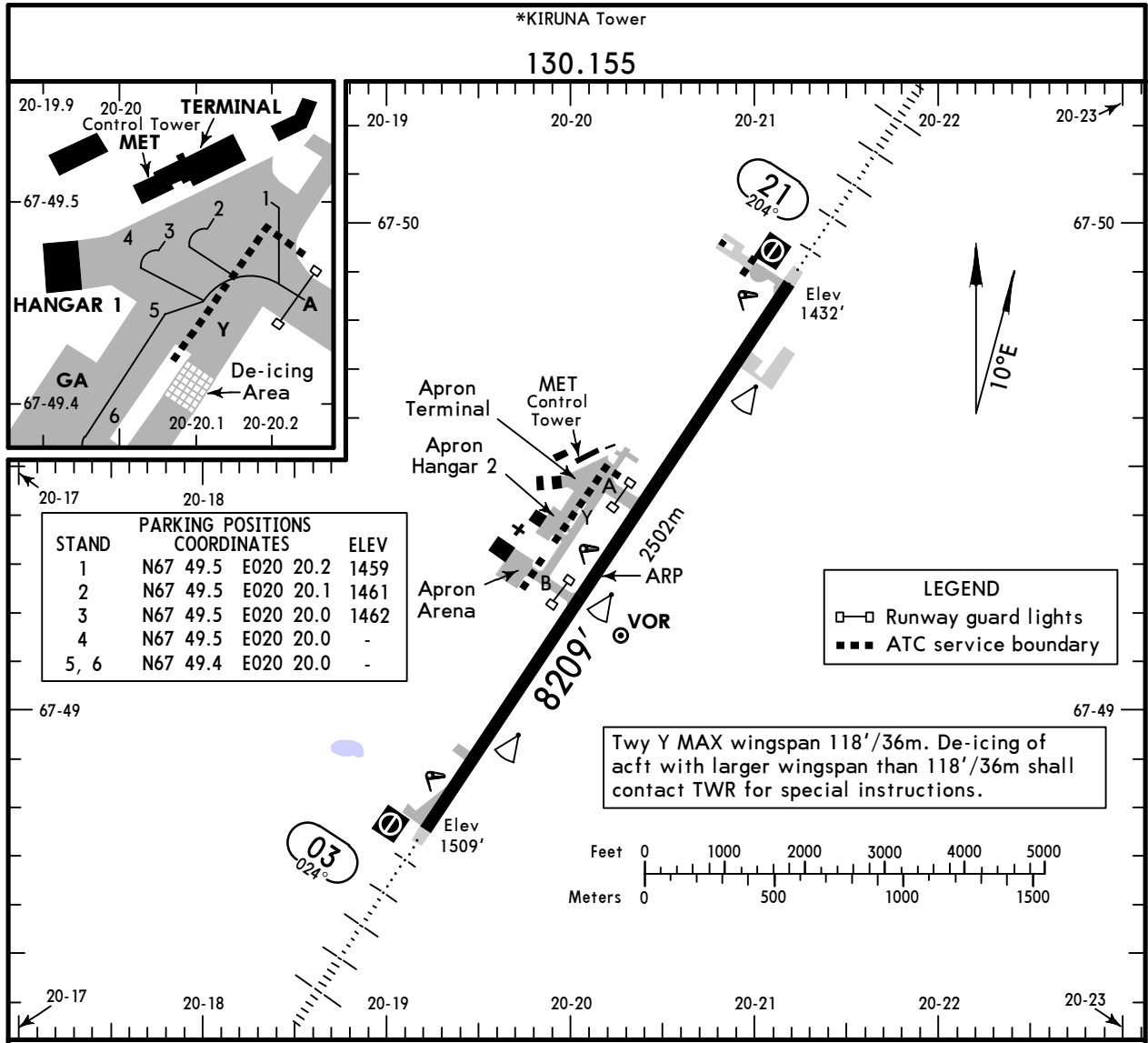
ROUTING

Climb straight ahead to at or above 2800, then depart omnidirectional, climbing to appropriate MSA.

ESNQ/KRN
 Apt Elev **1509'**
 N67 49.3 E020 20.1

JEPPesen
 2 AUG 19 **(10-9)** Eff 15 Aug

KIRUNA, SWEDEN
 KIRUNA



RWY	USABLE LENGTHS	LANDING BEYOND	TAKE-OFF	WIDTH
03 21	HIRL (60m) HIALS PAPI-L (angle 3.00°)	RVR		148' 45m

LOW VISIBILITY PROCEDURES (LVP)

LVP will be in force when RVR falls below 550m or when ceiling or vertical visibility is below 200'.
 The application of LVP will be announced by ATS.
 When LVP is applied only one acft is allowed in the manoeuvring area.
 When LVP is applied acft shall report rwy vacated at stand on apron.

	TAKE-OFF		
	Low Visibility Take-off		
	Day: RL & RCLM Night: RL	Day: RL or RCLM Night: RL	Adequate vis ref (Day only)
A			
B			
C	RVR 400m	400m	500m
D			

ESNQ/KRN
KIRUNA

JEPPESEN
2 AUG 19
Eff 15 Aug (11-1)

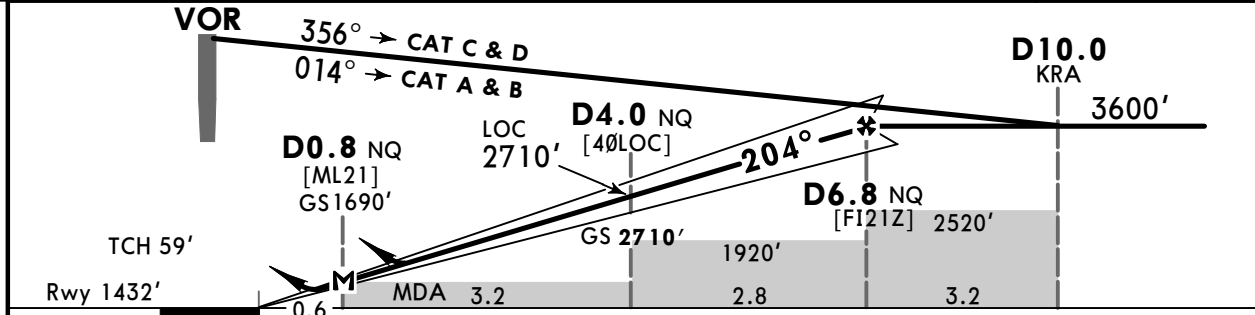
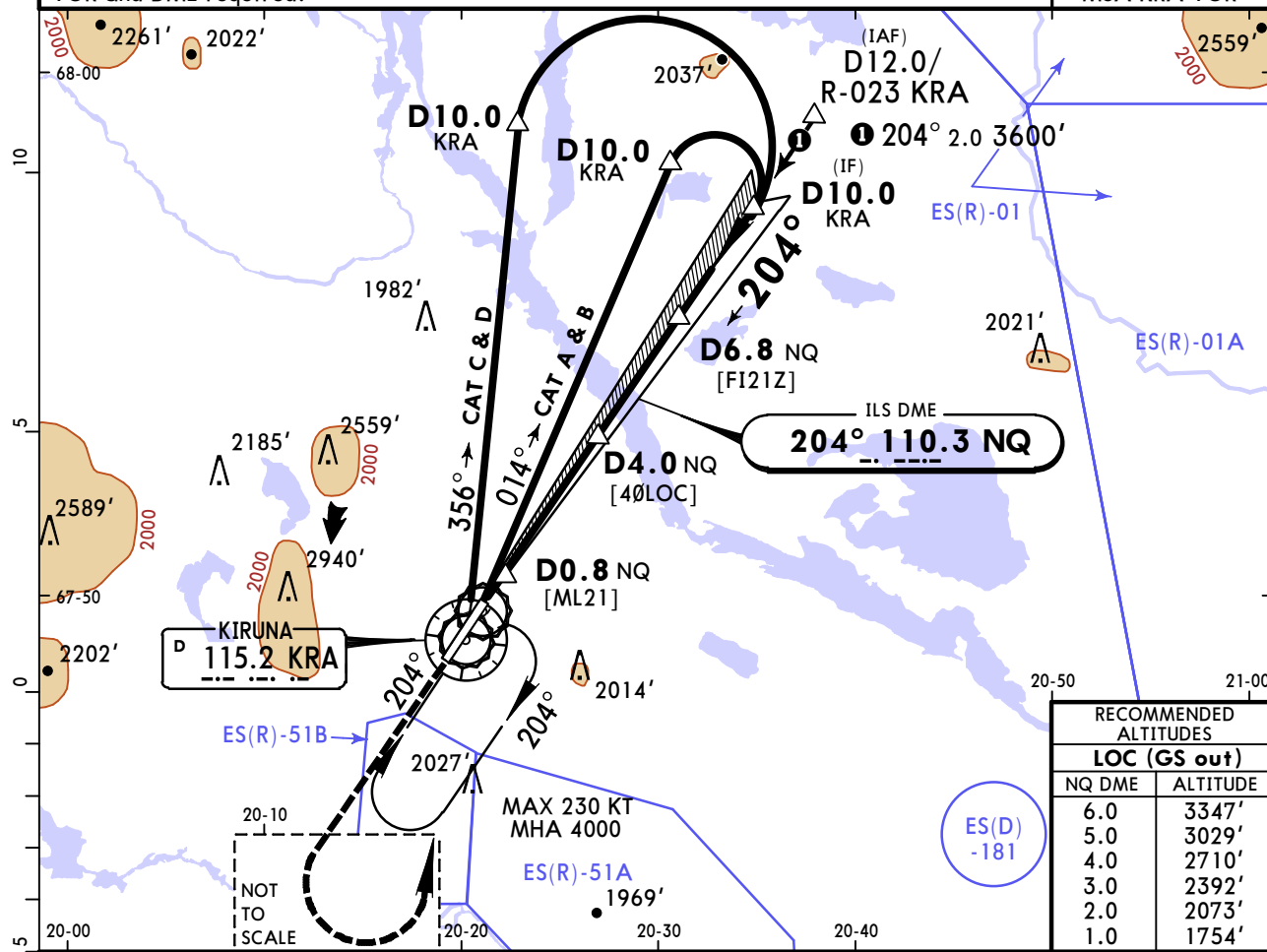
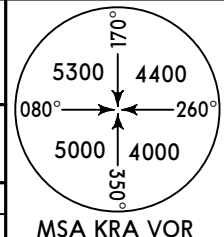
KIRUNA, SWEDEN
ILS Z or LOC Z Rwy 21

*KIRUNA Tower 130.155				
LOC NQ 110.3	Final Apch Crs 204°	GS D4.0 NQ 2710' (1278')	ILS DA(H) 1632' (200')	Apt Elev 1509' Rwy 1432'

MISSED APCH: Climb STRAIGHT AHEAD to 4000', then turn LEFT to VOR and join holding.

Alt Set: hPa Rwy Elev: 51 hPa Trans level: By ATC Trans alt: 6000'

VOR and DME required.



Gnd speed-Kts	70	90	100	120	140	160	HIALS 4000' PAPI ↑	
ILS GS or LOC Descent Angle	3.00°	372	478	531	637	743		849
MAP at D0.8 NQ								

PANS OPS	Standard STRAIGHT-IN LANDING RWY 21				CIRCLE-TO-LAND				
	ILS		LOC (GS out)		Southeast of rwy				
	DA(H) 1632' (200')		CDFA DA/MDA(H) 1750' (318')		MDA(H)		VIS		
	FULL	ALS out		ALS out	Max Kts				
A					100	2210' (701')	1500m	2210' (701')	1500m
B					135	2340' (831')	1600m	2410' (901')	1600m
C	RVR 550m	RVR 1200m	RVR 750m	RVR 1400m	180	2430' (921')	2400m	3350' (1841')	2400m
D					205	2440' (931')	3600m	3350' (1841')	3600m

☐ RVR 750m when a Flight Director or Autopilot or HUD to DA is not used.

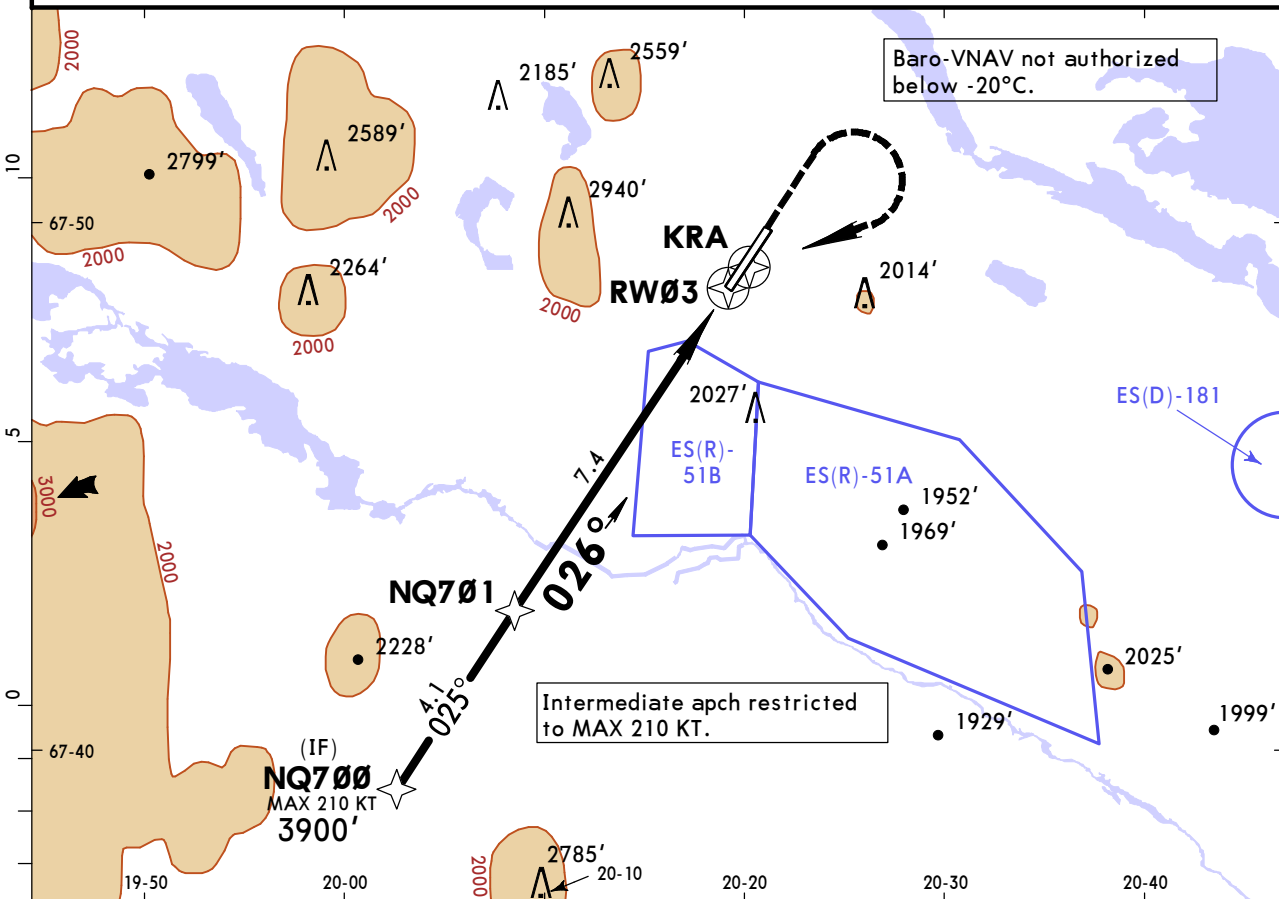
ESNQ/KRN
KIRUNA

JEPPESEN
2 AUG 19 **(12-1)** Eff 15 Aug

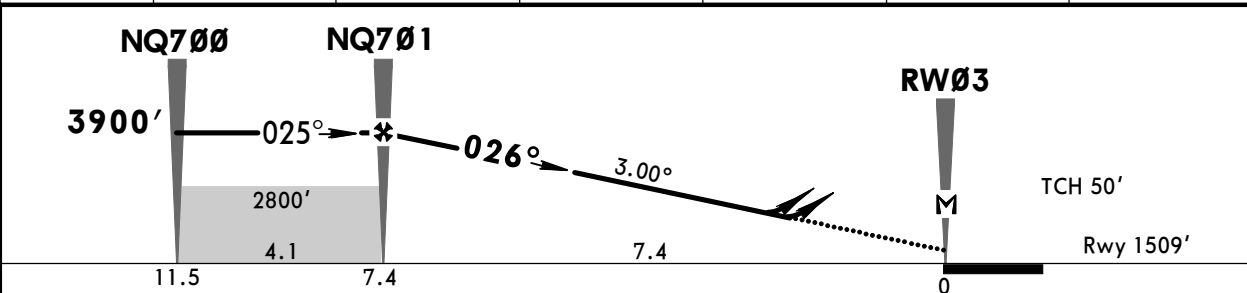
KIRUNA, SWEDEN
RNP Rwy 03

*KIRUNA Tower					
130.155					
RNAV	Final Apch Crs 026°	Procedure Alt NQ701 3900' (2391')	LNAV/VNAV DA(H) 2009' (500')	Apt Elev 1509' Rwy 1509'	
MISSED APCH: Climb STRAIGHT AHEAD to 3000', then turn RIGHT to KRA climbing to 4500'. MAX 200 KT. Do not turn before MAP.					MSA ARP

Alt Set: hPa Rwy Elev: 54 hPa Trans level: By ATC Trans alt: 6000'



DIST to RW03	7.0	6.0	5.0	4.0	3.0	2.0
ALTITUDE	3788'	3470'	3151'	2833'	2515'	2196'



Gnd speed-Kts	70	90	100	120	140	160	HIALS PAPI 200 KT 3000' MAX ↑
Descent Angle 3.00°	372	478	531	637	743	849	
LNAV/VNAV: MAP at DA							
LNAV: MAP at RW03							

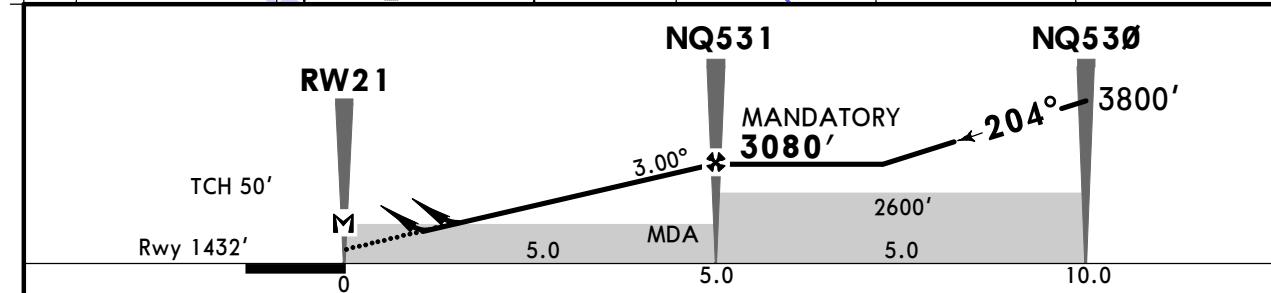
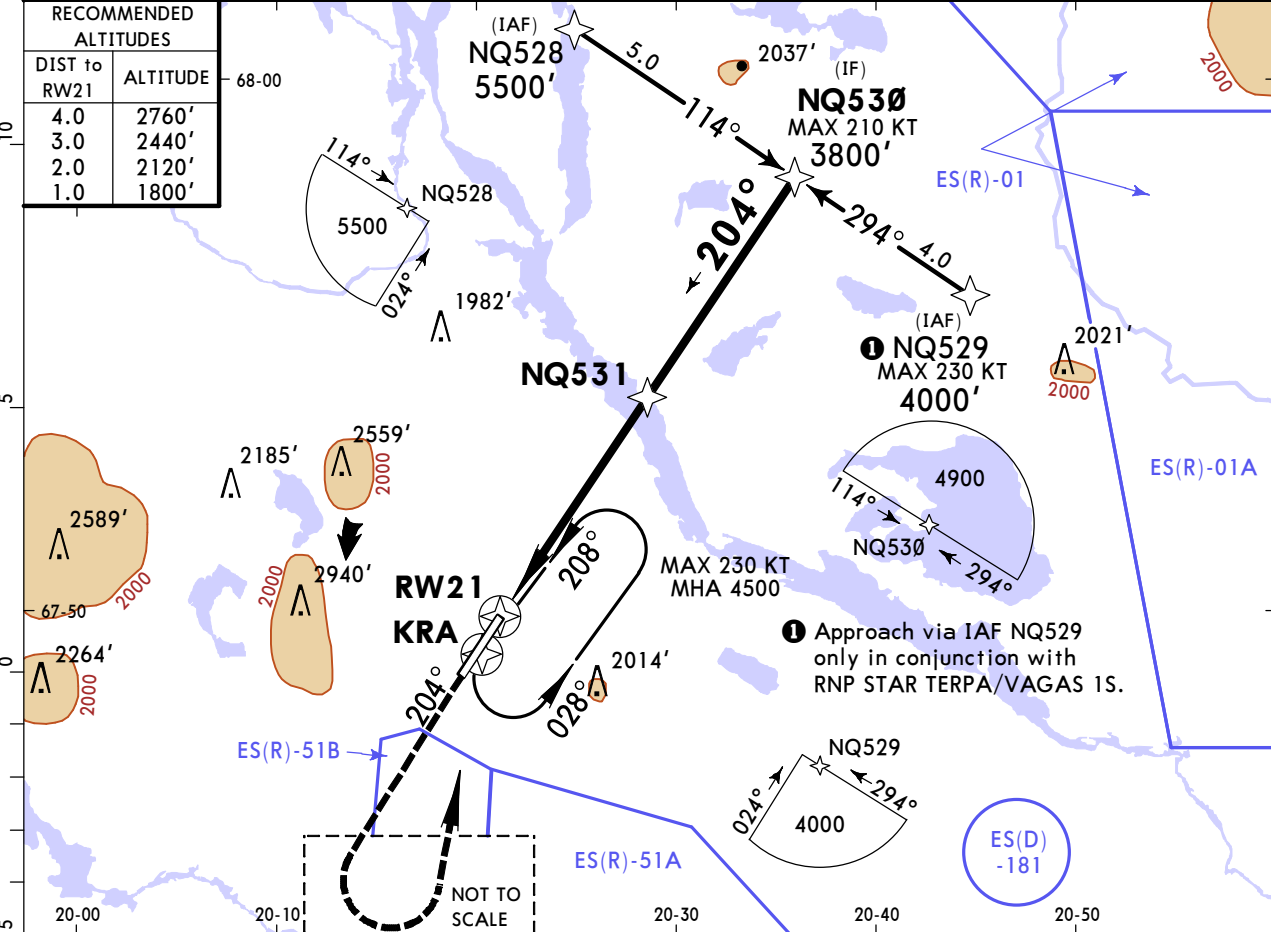
PANS OPS	Standard		STRAIGHT-IN LANDING RWY 03		CIRCLE-TO-LAND		
	LNAV/VNAV		LNAV CDFA				
	DA(H) 2009' (500')		DA/MDA(H) 2070' (561')				
	ALS out		ALS out		Max Kts	MDA(H)	VIS
	A	RVR 1500m	RVR 1500m	RVR 1500m	100	2230' (721')	1500m
B	RVR 1500m	RVR 1500m	RVR 1500m	135	2490' (981')	1600m	
C	RVR 1500m	RVR 1900m	RVR 2400m	180	3340' (1831')	2400m	
D	RVR 2300m	RVR 1900m	RVR 2400m	205	3340' (1831')	3600m	

ESNQ/KRN
KIRUNA

JEPPESEN
2 AUG 19 **(12-2)** Eff 15 Aug

KIRUNA, SWEDEN
RNP Rwy 21

*KIRUNA Tower					
130.155					
RNAV	Final Apch Crs 204°	Mandatory Alt NQ531 3080' (1648')	LNAV/VNAV DA(H) Refer to Minimums	Apt Elev 1509' Rwy 1432'	TAA 25 NM IAF
MISSED APCH: Climb STRAIGHT AHEAD to 4000', then turn LEFT (MAX 230 KT) to KRA climbing to 4500' and join holding.					
RNP apch	Alt Set: hPa	Rwy Elev: 51 hPa	Trans level: By ATC	Trans alt: 6000'	
1. WARNING: Missed approach turn for CAT CD partly outside controlled airspace if MACG is less than 4.0%. 2. Baro-VNAV not authorized below -25°C. 3. VPA exceeds 3.5° above 52°C.					



Gnd speed-Kts	70	90	100	120	140	160	HIALS PAPI 4000' ↑
Descent Angle 3.00°	372	478	531	637	743	849	
LNAV/VNAV: MAP at DA							
LNAV: MAP at RW21							

Standard				STRAIGHT-IN LANDING RWY 21			
LNAV/VNAV		LNAV		LNAV		LNAV	
DA(H)		DA(H)		DA/MDA(H)		CDFA	
A: 1700' (268') B: 1710' (278')		C: 1720' (288') D: 1730' (298')		1820' (388')		1820' (388')	
ALS out		ALS out		ALS out		ALS out	
A		RVR 1300m		RVR 1100m		RVR 1500m	
B		RVR 1300m		RVR 1100m		RVR 1500m	
C	RVR 750m	RVR 1400m		RVR 1100m		RVR 1800m	
D		RVR 1400m		RVR 1100m		RVR 1800m	

ESNQ/KRN
KIRUNA

JEPPESSEN
2 AUG 19 **(13-1)** Eff 15 Aug

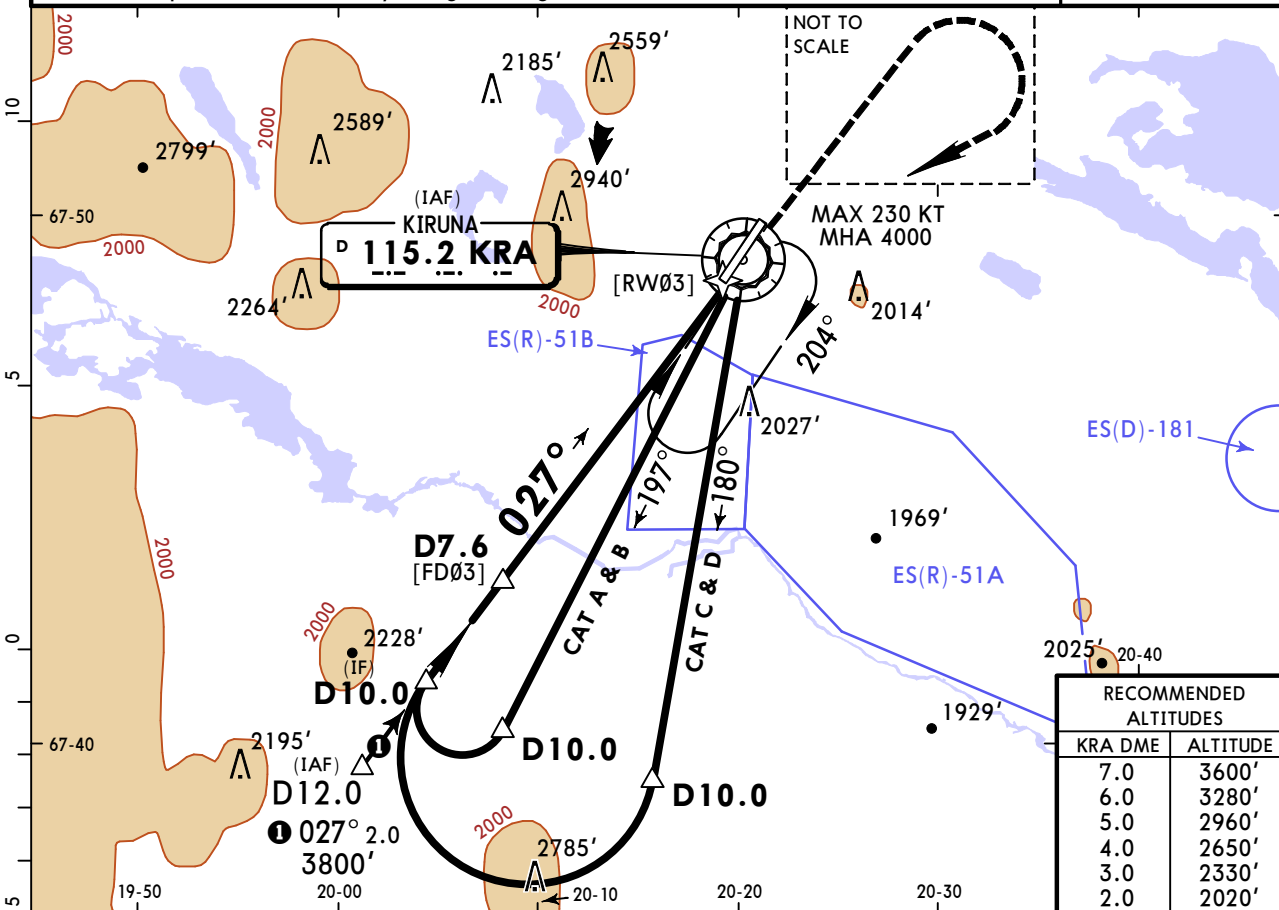
KIRUNA, SWEDEN
VOR Z Rwy 03

*KIRUNA Tower

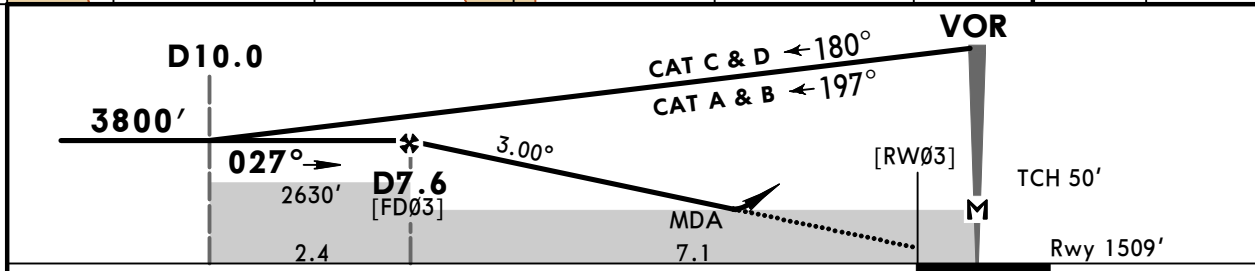
130.155

VOR KRA 115.2	Final Apch Crs 027°	Procedure Alt D7.6 3800' (2291')	DA/MDA(H) 2070' (561')	Apt Elev 1509' Rwy 1509'	
MISSED APCH: Climb STRAIGHT AHEAD to 4000', then turn RIGHT to VOR and join holding.					
Alt Set: hPa Rwy Elev: 54 hPa Trans level: By ATC Trans alt: 6000'					

1. DME required. 2. Final apch track offset 3° from rwy centerline.
3. Missed apch for CAT CD may bring the flight outside TMA.



RECOMMENDED ALTITUDES	
KRA DME	ALTITUDE
7.0	3600'
6.0	3280'
5.0	2960'
4.0	2650'
3.0	2330'
2.0	2020'



Gnd speed-Kts	70	90	100	120	140	160	HIALS PAPI 4000' ↑
Descent Angle	3.00°	372	478	531	637	743	

Standard		STRAIGHT-IN LANDING RWY03		CIRCLE-TO-LAND				
		CDFA DA/MDA(H) 2070' (561')		Southeast of rwy MDA(H) VIS MDA(H) VIS				
		ALS out		Max Kts				
A	RVR 1500m			100	2210' (701')	1500m	2210' (701')	1500m
B	RVR 1500m			135	2340' (831')	1600m	2410' (901')	1600m
C	RVR 1900m	RVR 2400m		180	2430' (921')	2400m	3350' (1841')	2400m
D	RVR 1900m	RVR 2400m		205	2440' (931')	3600m	3350' (1841')	3600m

PANS OPS

ESNQ/KRN
KIRUNA

JEPPESSEN
2 AUG 19 **(13-2)** Eff 15 Aug

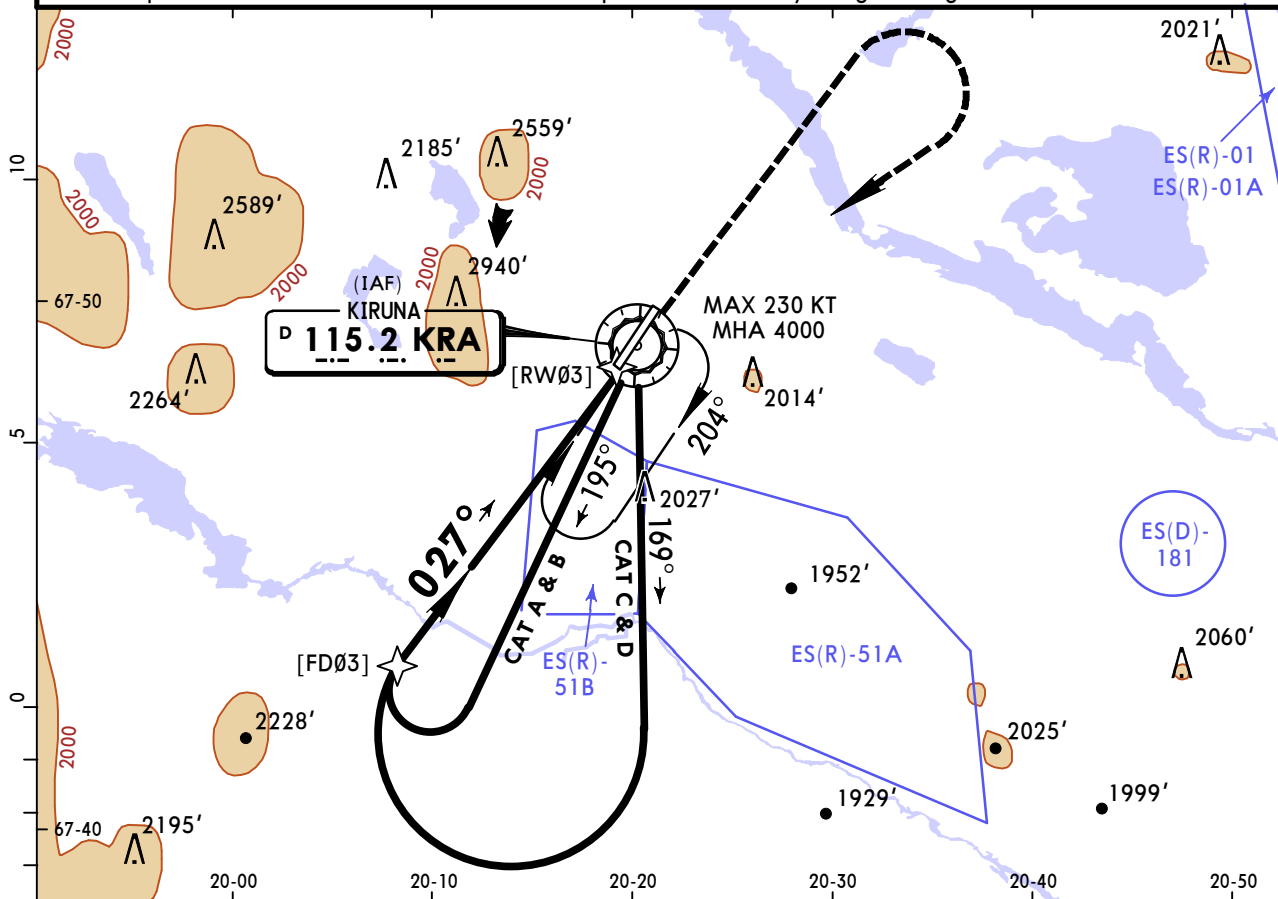
KIRUNA, SWEDEN
VOR Y Rwy 03

*KIRUNA Tower					
130.155					
VOR KRA 115.2	Final Apch Crs 027°	Minimum Alt No FAF	DA/MDA(H) (CONDITIONAL) 2530' (1021')	Apt Elev 1509' Rwy 1509'	

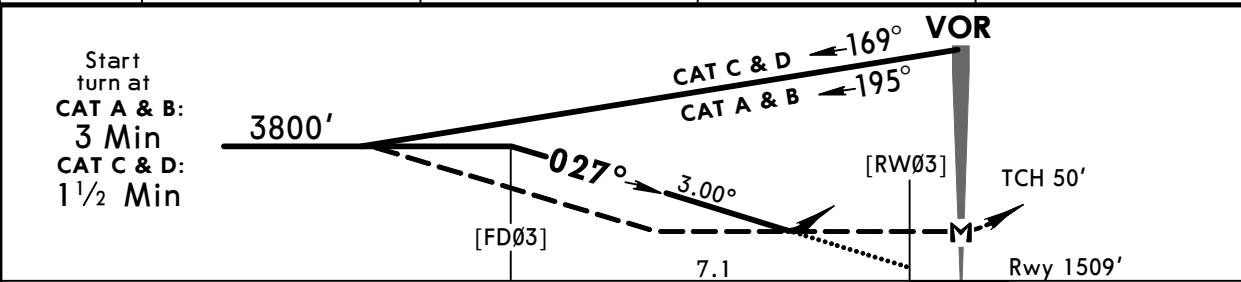
MISSED APCH: Climb STRAIGHT AHEAD to 4000', then turn RIGHT to VOR and join holding.

Alt Set: hPa Rwy Elev: 54 hPa Trans level: By ATC Trans alt: 6000'

1. Final apch track offset 3° from RCL. 2. Missed apch for CAT D may bring the flight outside TMA.



DIST to RW03	7.0	6.0	5.0	4.0
ALTITUDE	3770'	3460'	3140'	2830'



Gnd speed-Kts	70	90	100	120	140	160	HIALS 4000' ↑
Descent Angle 3.00°	372	478	531	637	743	849	

PANS OPS	Standard STRAIGHT-IN LANDING RWY03				CIRCLE-TO-LAND				
	CDFA		non-CDFA		Southeast of rwy				
	DA/MDA(H) 2530' (1021')		MDA(H) 2530' (1021')		Max Kts	MDA(H) VIS		MDA(H) VIS	
	ALS out		ALS out			2530' (1021') 1500m		2530' (1021') 1500m	
	A	RVR 1500m		RVR 4300m		100	2530' (1021') 1600m		2530' (1021') 1600m
B	RVR 2400m		RVR 4500m		135	2530' (1021') 2400m		3350' (1841') 2400m	
C	RVR 1500m		RVR 4300m		180	2530' (1021') 3600m		3350' (1841') 3600m	
D	RVR 2400m		RVR 4500m		205	2530' (1021') 3600m		3350' (1841') 3600m	

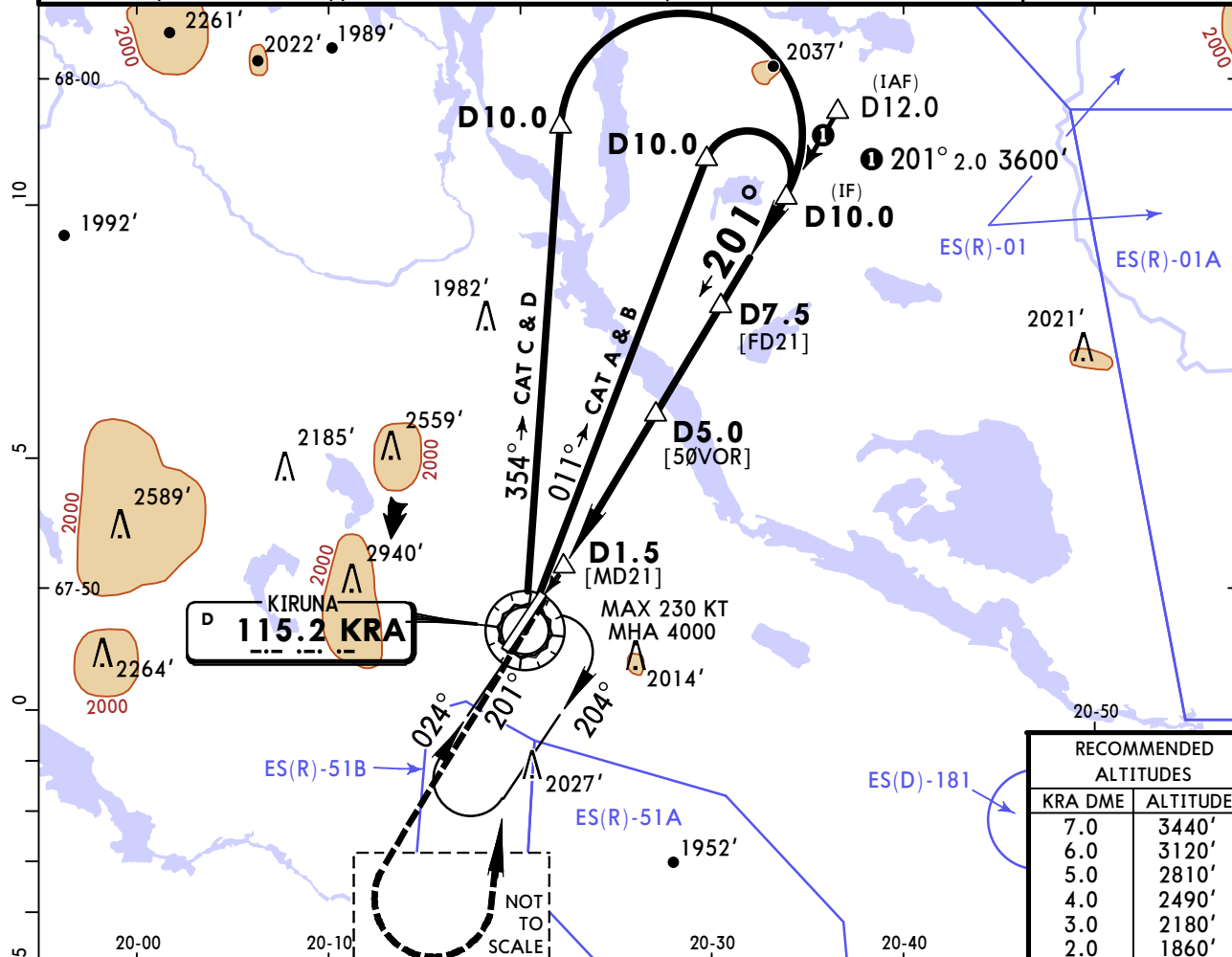
or higher straight-in minimums.

ESNQ/KRN
KIRUNA

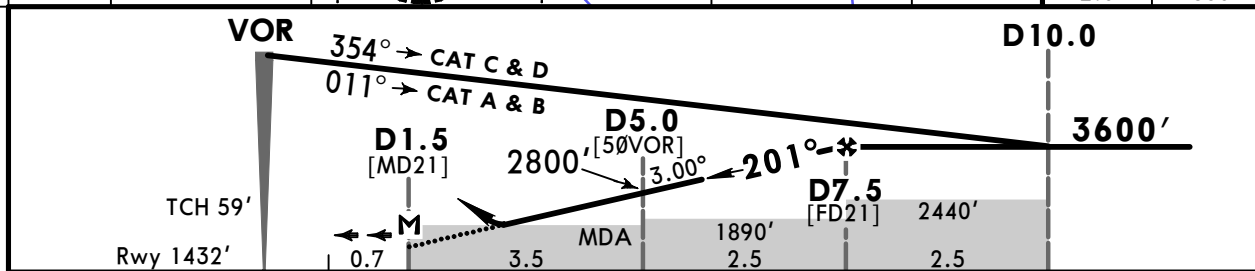
JEPPESEN
2 AUG 19 **(13-3)** Eff 15 Aug

KIRUNA, SWEDEN
VOR Rwy 21

*KIRUNA Tower					
130.155					
VOR KRA 115.2	Final Apch Crs 201°	Procedure Alt D7.5 3600' (2168')	DA/MDA(H) 1820' (388')	Apt Elev 1509' Rwy 1432'	
MISSED APCH: Climb on R-201 to 4000', then turn LEFT to VOR and join holding.					
Alt Set: hPa	Rwy Elev: 51 hPa	Trans level: By ATC	Trans alt: 6000'		
1. DME required. 2. Final approach track offset 3° from rwy centerline.					
					MSA KRA VOR



RECOMMENDED ALTITUDES	
KRA DME	ALTITUDE
7.0	3440'
6.0	3120'
5.0	2810'
4.0	2490'
3.0	2180'
2.0	1860'



Gnd speed-Kts	70	90	100	120	140	160		4000' ↑ on 115.2 R-201
Descent Angle 3.00°	372	478	531	637	743	849		
MAP at D1.5								

PANS OPS	Standard STRAIGHT-IN LANDING RWY21				CIRCLE-TO-LAND					
	CDFA				Southeast of rwy					
	DA/MDA(H) 1820' (388')									
			ALS out		Max Kts	MDA(H)	VIS	MDA(H)	VIS	
	A			RVR 1500m	100	2210' (701')	1500m	2210' (701')	1500m	
B			RVR 1100m	135	2340' (831')	1600m	2410' (901')	1600m		
C			RVR 1800m	180	2430' (921')	2400m	3350' (1841')	2400m		
D			RVR 1800m	205	2440' (931')	3600m	3350' (1841')	3600m		

ESNQ/KRN
KIRUNA

JEPPESSEN
2 AUG 19 (16-1) Eff 15 Aug

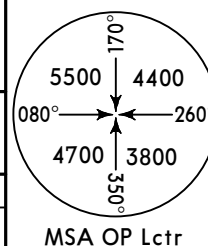
KIRUNA, SWEDEN
NDB Z Rwy 21

*KIRUNA Tower

130.155

BRIEFING STRIP™

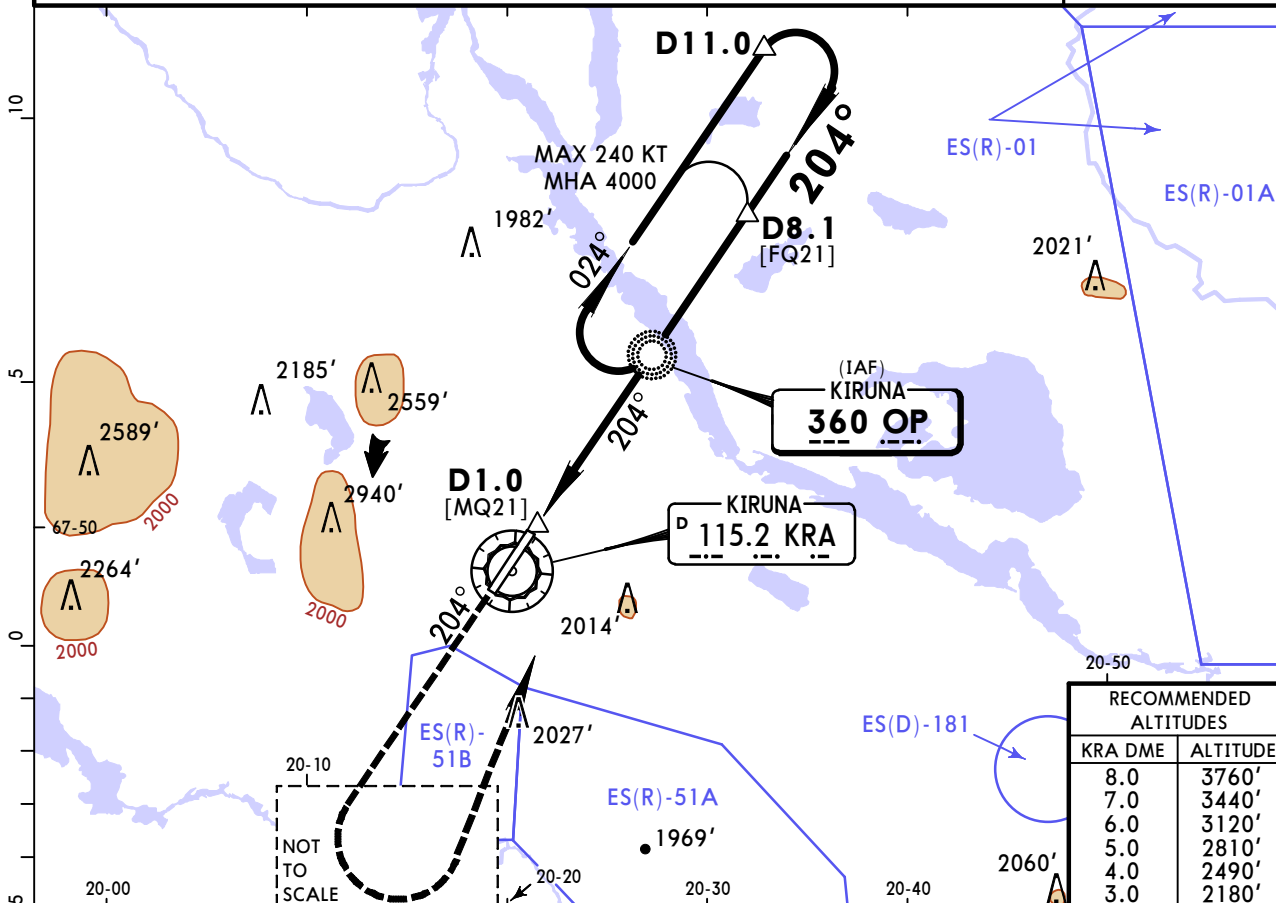
Lctr OP 360	Final Apch Crs 204°	Procedure Alt D8.1 3800' (2368')	DA/MDA(H) 1980' (548')	Apt Elev 1509' Rwy 1432'
-----------------------	-------------------------------	--	----------------------------------	-----------------------------



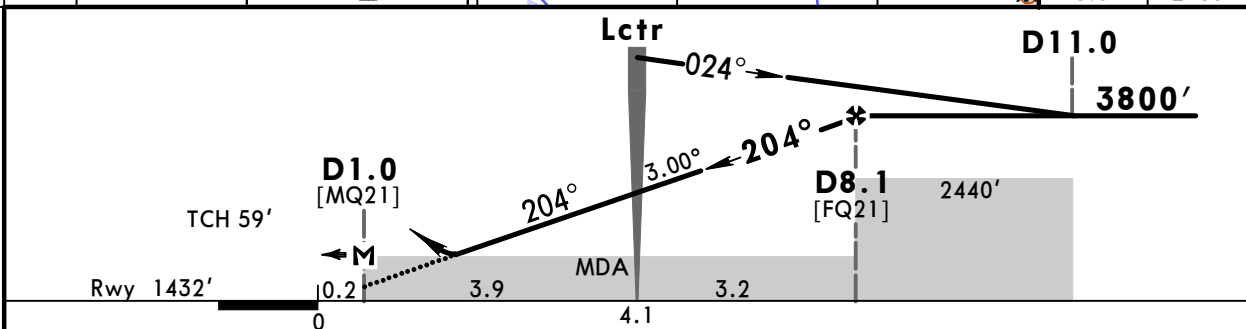
MISSED APCH: Climb on 204° from Lctr to 4000', then turn LEFT to Lctr and join holding.

Alt Set: hPa Rwy Elev: 51 hPa Trans level: By ATC Trans alt: 6000'

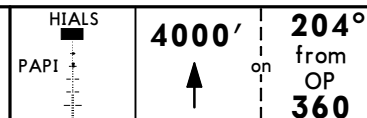
1. DME required. 2. Holding and racetrack may bring the flight outside TMA.
3. Racetrack restricted to MAX 240 KT.



RECOMMENDED ALTITUDES	
KRA DME	ALTITUDE
8.0	3760'
7.0	3440'
6.0	3120'
5.0	2810'
4.0	2490'
3.0	2180'



Gnd speed-Kts	70	90	100	120	140	160
Descent Angle	3.00°	372	478	531	637	743



Standard STRAIGHT-IN LANDING RWY21

CIRCLE-TO-LAND

CDFA	
DA/MDA(H) 1980' (548')	
ALS out	

Southeast of rwy			
Max Kts	MDA(H)	VIS	MDA(H)

A	RVR 1500m	
B	RVR 1500m	
C	RVR 1800m	RVR 2400m
D	RVR 1800m	RVR 2400m

100	2210' (701')	1500m	2210' (701')	1500m
135	2340' (831')	1600m	2410' (901')	1600m
180	2430' (921')	2400m	3350' (1841')	2400m
205	2440' (931')	3600m	3350' (1841')	3600m

PANS OPS

ESNQ/KRN
KIRUNA

JEPPESSEN
2 AUG 19 **(16-2)** Eff 15 Aug

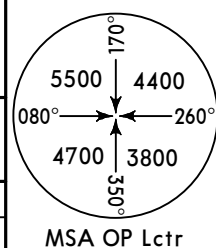
KIRUNA, SWEDEN
NDB Y Rwy 21

*KIRUNA Tower

130.155

BRIEFING STRIP™

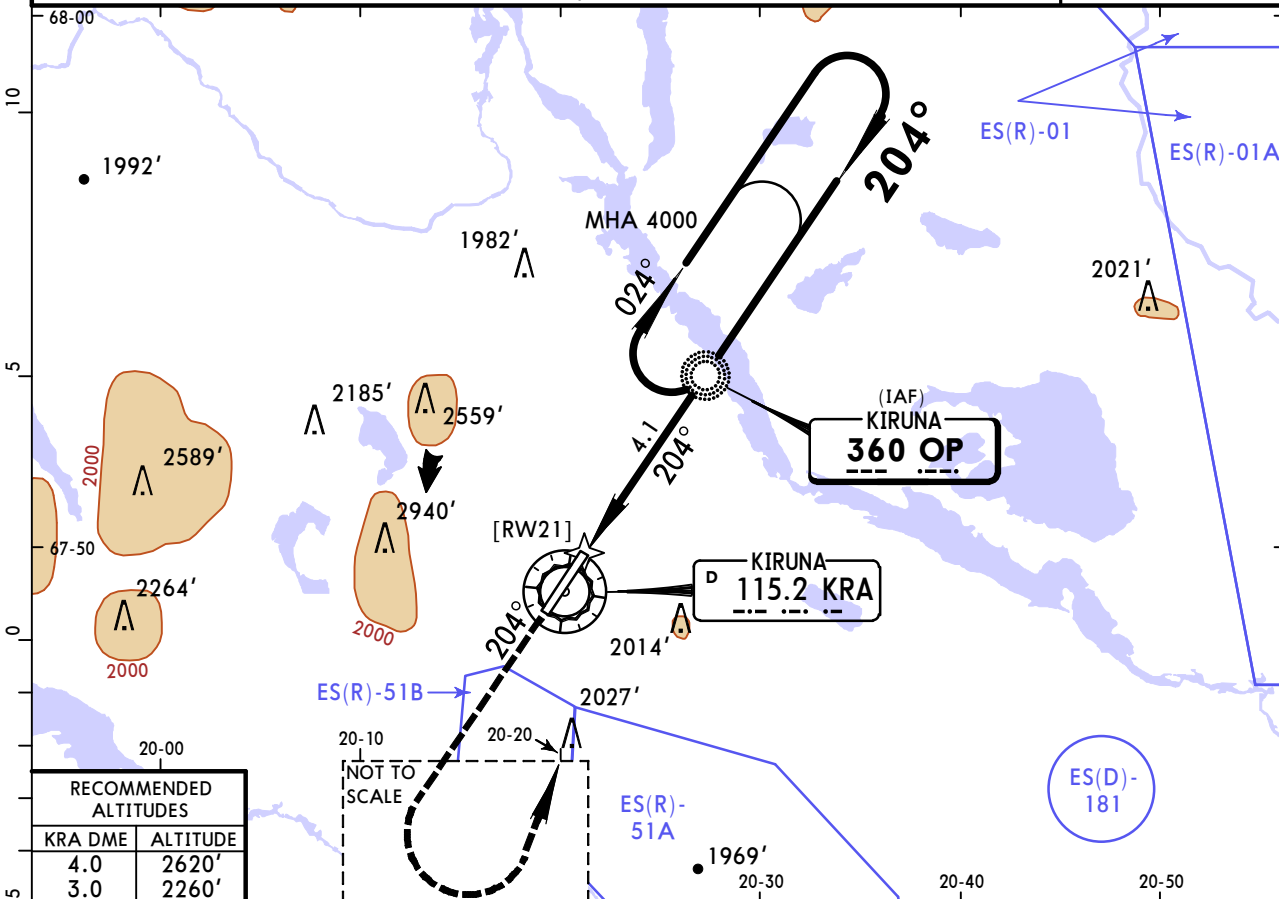
Lctr OP 360	Final Apch Crs 204°	Procedure Alt Lctr 2930' (1498')	DA/MDA(H) 2010' (578')	Apt Elev 1509' Rwy 1432'
-----------------------	-------------------------------	--	----------------------------------	-----------------------------



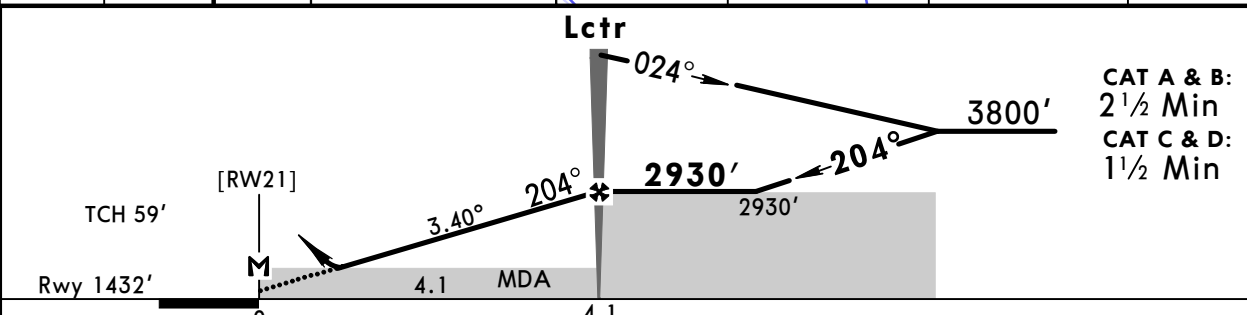
MISSED APCH: Climb on 204° from Lctr to 4000', then turn LEFT to Lctr and join holding.

Alt Set: hPa Rwy Elev: 51 hPa Trans level: By ATC Trans alt: 6000'

1. Holding and racetrack may bring the flight outside TMA.
2. Racetrack restricted to CAT AB: MAX 130 KT, CAT CD: MAX 185 KT.

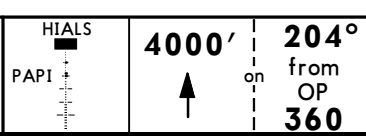


RECOMMENDED ALTITUDES	
KRA DME	ALTITUDE
4.0	2620'
3.0	2260'



CAT A & B:
2 1/2 Min
CAT C & D:
1 1/2 Min

Gnd speed-Kts	70	90	100	120	140	160
Descent Angle	3.40°	421	541	602	722	842
LCTR to MAP	4.1	3:31	2:44	2:28	2:03	1:45
					1:32	



PANS OPS	Standard STRAIGHT-IN LANDING RWY21		CIRCLE-TO-LAND				
	CDFA		Southeast of rwy				
	DA/MDA(H) 2010' (578')						
	ALS out		Max Kts	MDA(H)	VIS	MDA(H)	VIS
A	RVR 1500m		100	2210' (701')	1500m	2210' (701')	1500m
B	RVR 1500m		135	2340' (831')	1600m	2410' (901')	1600m
C	RVR 1900m	RVR 2400m	180	2430' (921')	2400m	3350' (1841')	2400m
D	RVR 1900m	RVR 2400m	205	2440' (931')	3600m	3350' (1841')	3600m

ESNQ

KIRUNA

03 MAY 19

19-1

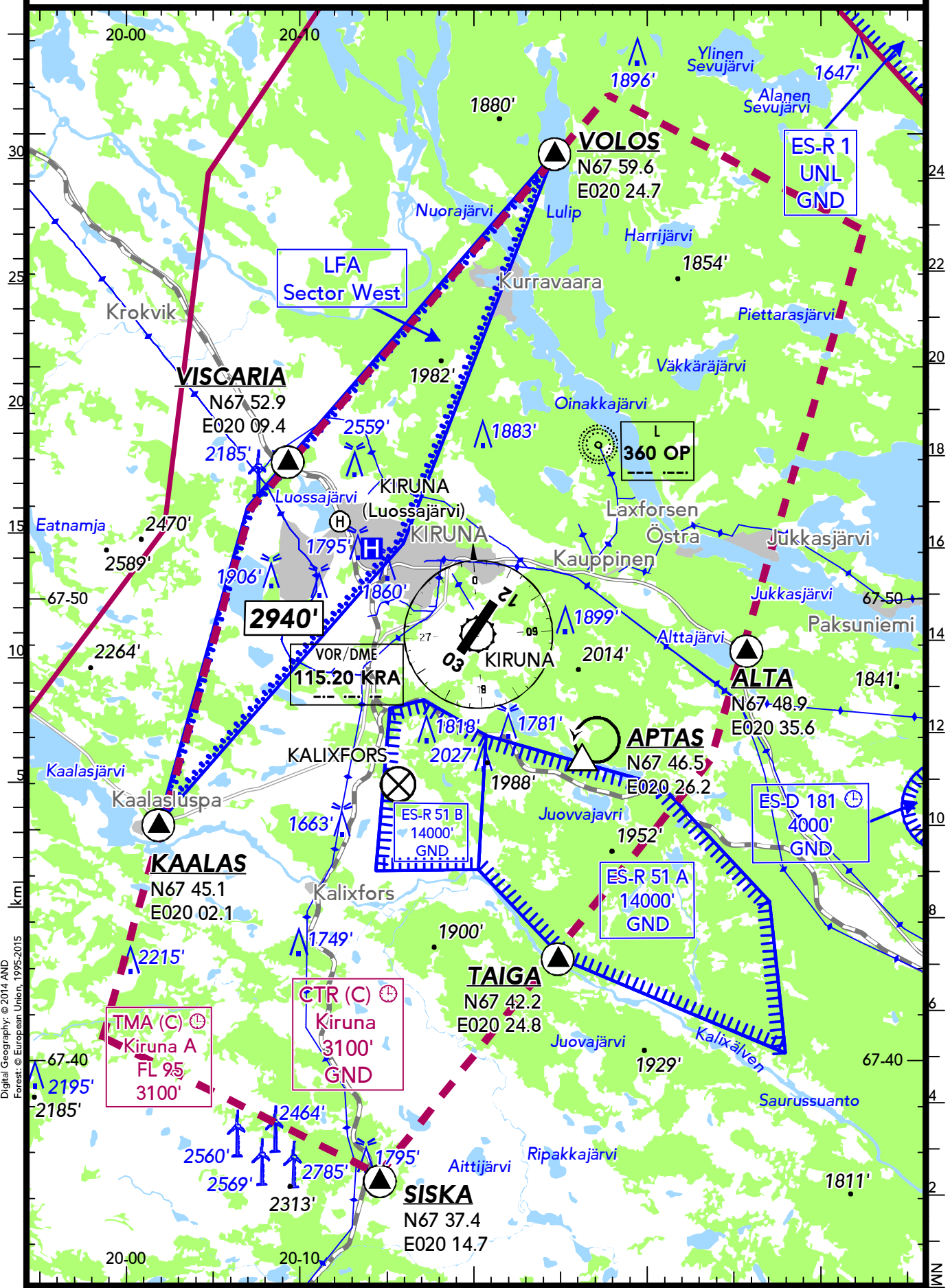
KIRUNA

SWEDEN

VAR 8°E

BRIEFING STRIP™	LOCATION	FIS	TOWER
	Elev 1509' /460m N67 49.3 E020 20.1	SWEDEN CONTROL 131.055	KIRUNA TOWER 130.155 ⁽¹⁾ (sw, en)

(1) VDF



km
Digital Geography: © 2014 AND
Forest: © European Union, 1995-2015

ESNQ

KIRUNA

03 MAY 19

19-2

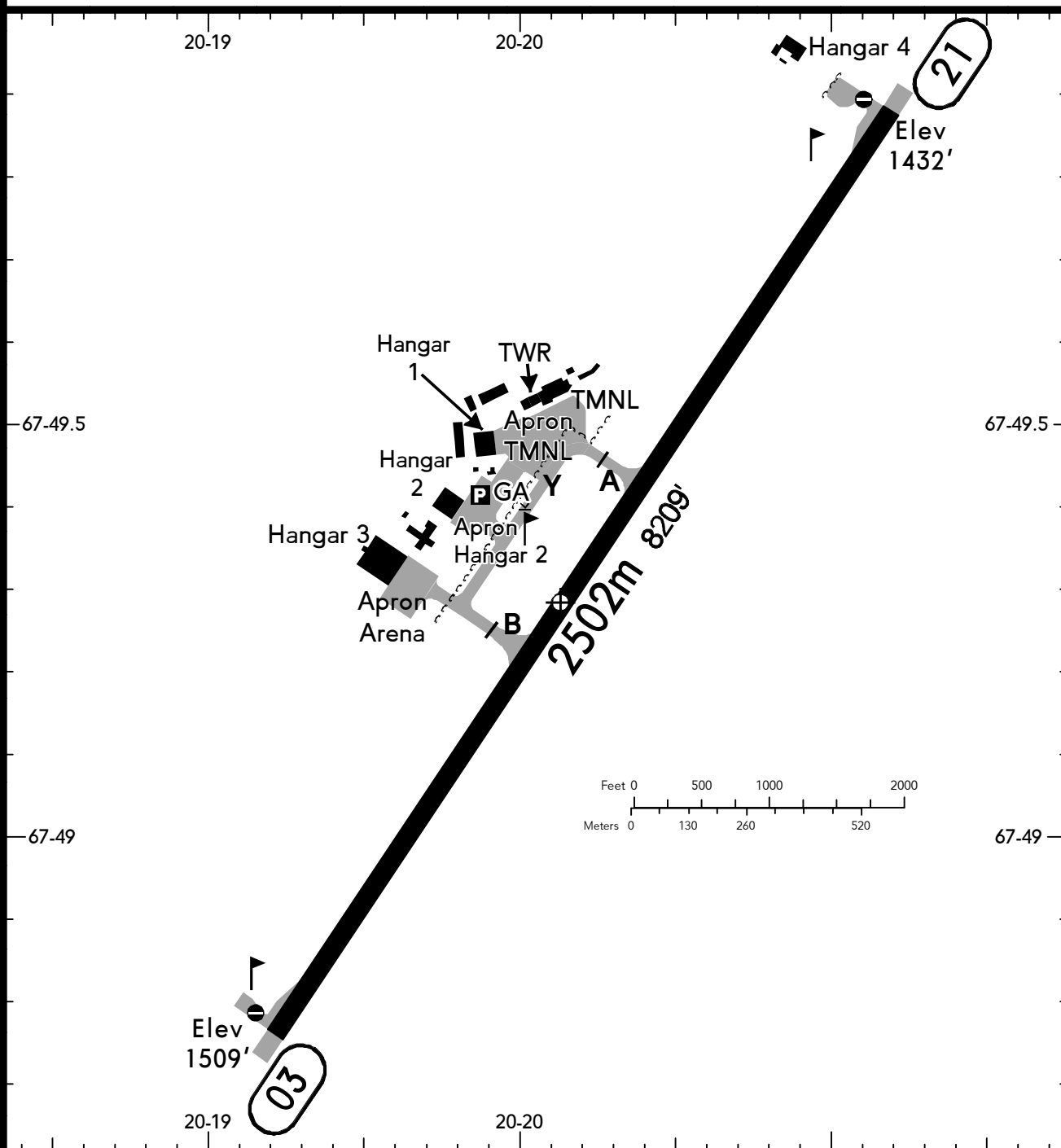
KIRUNA

SWEDEN


BRIEFING STRIP™

LOCATION Elev 1509' /460m N67 49.3 E020 20.1	TOWER KIRUNA TOWER 130.155 ⁽¹⁾ (sw, en)	ADMITTED AIRCRAFT  
---	--	--

⁽¹⁾ VDF



ALS - PAPI 03 (2.86°), 21 (2.86°) - THRL - RL - TWYL - APRON - WDI - OBSTL.

RWY No	Dimension (m) - Surface	TORA (m)	LDA (m)	Strength	Lights
03 (026°)	2502 x 45 Asphalt	2502	2502	PCN 75/F/B/X/T	
21 (206°)					

RWY 03/21 also used as HEL LDG area.

- watch TWR for optical signals.

COM Failure

- Enter CTR (C) via REP ALTA - Holding at APTAS at or below 2500' to traffic circuit,
- transmit blind your intentions,
- flash LDG LGT,

Chart changes since cycle 19-2019

ADD = added chart, REV = revised chart, DEL = deleted chart.

ACT	PROCEDURE IDENT	INDEX	REV DATE	EFF DATE
-----	-----------------	-------	----------	----------

KIRUNA, (KIRUNA - ESNQ)

TERMINAL CHART CHANGE NOTICES

Chart Change Notices for Airport ESNQ

Type: Terminal (VFR)

Effectivity: Permanent

Begin Date: Immediately

End Date: No end date

Customs: O/R.