

List of pages in this Trip Kit

Trip Kit Index

Airport Information For LSGC

Terminal Charts For LSGC

Revision Letter For Cycle 07-2019

Change Notices

Notebook

General Information

Location: LES EPLATURES CHE
ICAO/IATA: LSGC / ZHV
Lat/Long: N47° 05.0', E006° 47.6'
Elevation: 3366 ft

Airport Use: Public
Daylight Savings: Observed
UTC Conversion: -1:00 = UTC
Magnetic Variation: 1.0° E

Fuel Types: 100 Octane (LL), Jet A-1
Repair Types: Minor Airframe, Minor Engine
Customs: Yes
Airport Type: IFR
Landing Fee: Yes
Control Tower: Yes
Jet Start Unit: No
LLWS Alert: No
Beacon: No
Traffic Pattern Altitude: 4200 ft (834 ft AGL)

Sunrise: 0446 Z
Sunset: 1820 Z

Runway Information

Runway: 06
Length x Width: 3576 ft x 89 ft
Surface Type: asphalt
TDZ-Elev: 3368 ft
Lighting: Edge
Displaced Threshold: 118 ft

Runway: 24
Length x Width: 3576 ft x 89 ft
Surface Type: asphalt
TDZ-Elev: 3346 ft
Lighting: Edge, ALS
Displaced Threshold: 102 ft

Communication Information

Les Eplatures Tower: 118.125
Geneva Transit Approach: 136.450 Secondary Military
Geneva Delta Control: 119.175 RCO

LSGC/ZHV
LES EPLATURES

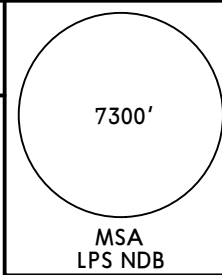
JEPPESEN
20 OCT 17 10-2

LES EPLATURES, SWITZERLAND

RNAV STAR

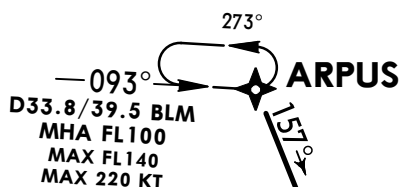
Apt Elev
3366'

Alt Set: hPa Trans level: By ATC Trans alt: 7000'
1. RNAV 1.
2. GNSS only.



ARPUS 1E[ARPU1E]
RNAV ARRIVAL

SPEED: MAX 250 KT BELOW FL100

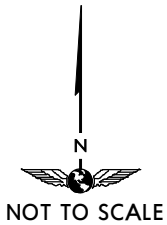


CAUTION
Part of the procedure is leading through Airspace Class E. VFR traffic without radio communication and without Transponder must be EXPECTED.

BASLE-MULHOUSE
D 117.45 BLM
N47 38.0 E007 30.0



HERICOURT
289 HR
N47 33.7 E006 43.9
At or above
FL90



ARNOT
At or below
FL90

DEKAM
At or above
7000'
MAX 150 KT

BOMEK
At or above
7000'
MAX 150 KT

LES EPLATURES
403 LPS
N47 05.0 E006 47.6
At or above
7000'
MAX 150 KT

MHA 7000
MAX FL110
MAX 150 KT
054°

ROUTING

To HR, via ARNOT to DEKAM, then via BOMEK to LPS.

LSGC/ZHV
LES EPLATURES

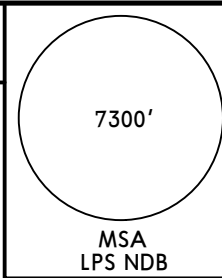
JEPPESEN
20 OCT 17 (10-2A)

LES EPLATURES, SWITZERLAND

STAR

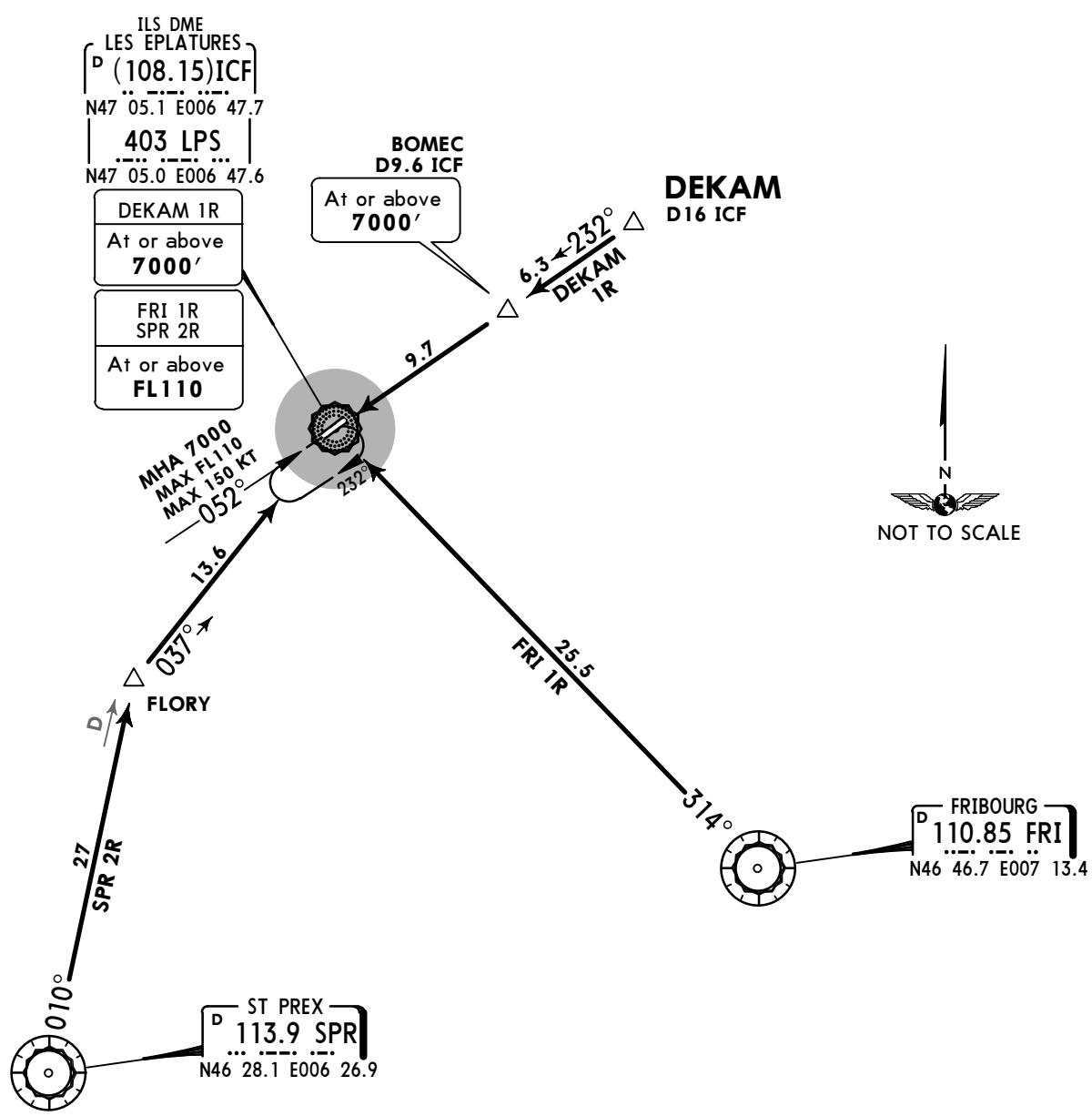
Apt Elev
3366'

Alt Set: hPa Trans level: By ATC Trans alt: 7000'



DEKAM 1R [DEKA1R]
FRIBOURG 1R (FRI 1R)
ST PREX 2R (SPR 2R)
ARRIVALS

CAUTION
Part of the procedure is leading through Airspace Class E. VFR traffic without radio communication and without Transponder must be EXPECTED.



STAR	ROUTING
DEKAM 1R	On 232° bearing via BOMECS to LPS.
FRI 1R ①	On FRI R-314 to LPS. MAINTAIN at or above FL110 to LPS.
SPR 2R	On SPR R-010 to FLORY, intercept 037° bearing to LPS. MAINTAIN at or above FL110 to LPS.

① During MIL activity available on request.

LSGC
LES EPLATURES

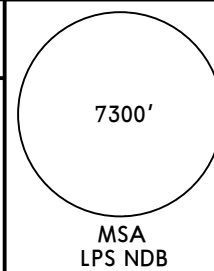
JEPPESEN
29 APR 16 **10-3**

LES EPLATURES, SWITZERLAND

SID

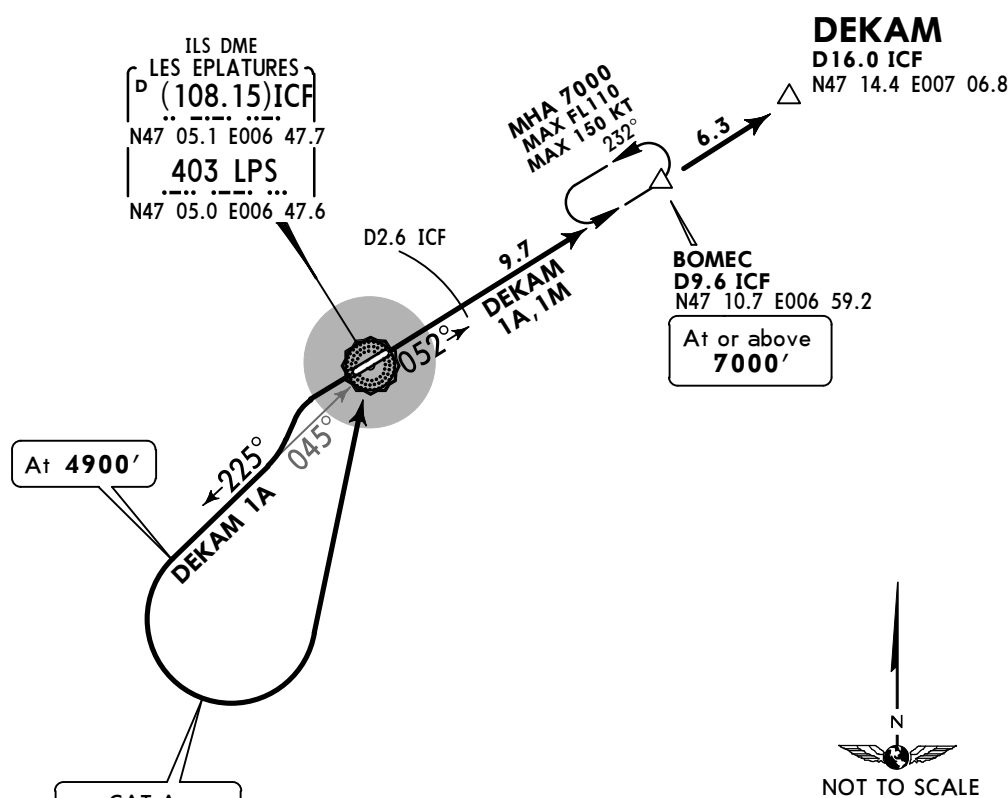
Apt Elev
3366'

Trans level: By ATC Trans alt: 7000'



DEKAM 1A [DEKA1A]
DEKAM 1M [DEKA1M]

CAUTION
Part of the procedure is leading through Airspace Class E. VFR traffic without radio communication and without Transponder must be EXPECTED.



CAT A
MAX 120 KT
Minimum Bank 15°
CAT B
MAX 150 KT
Minimum Bank 25°

These SIDs require minimum climb gradients of
DEKAM 1A: 4.2% up to 4900', then 6.0% up to 6000 due to airspace restrictions only.
DEKAM 1M: 5.6% up to 4300' due to airspace restrictions only.

Gnd speed-KT	75	100	150	200	250	300
4.2% V/V (fpm)	319	425	638	851	1063	1276
5.6% V/V (fpm)	425	567	851	1134	1418	1701
6.0% V/V (fpm)	456	608	911	1215	1519	1823

Initial climb clearance FL80

SID	RWY	ROUTING
DEKAM 1A	24	Intercept 225° bearing from LPS, MAINTAIN visual ground contact up to 3900', at 4900' turn LEFT to LPS, 052° bearing via BOMECS to DEKAM.
DEKAM 1M	06	Climb on runway heading, MAINTAIN visual ground contact until D2.6 ICF, intercept 052° bearing from LPS via BOMECS to DEKAM.

LSGC
LES EPLATURES

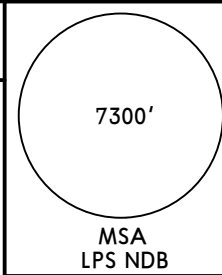
JEPPESSEN
29 APR 16 **10-3A**

LES EPLATURES, SWITZERLAND

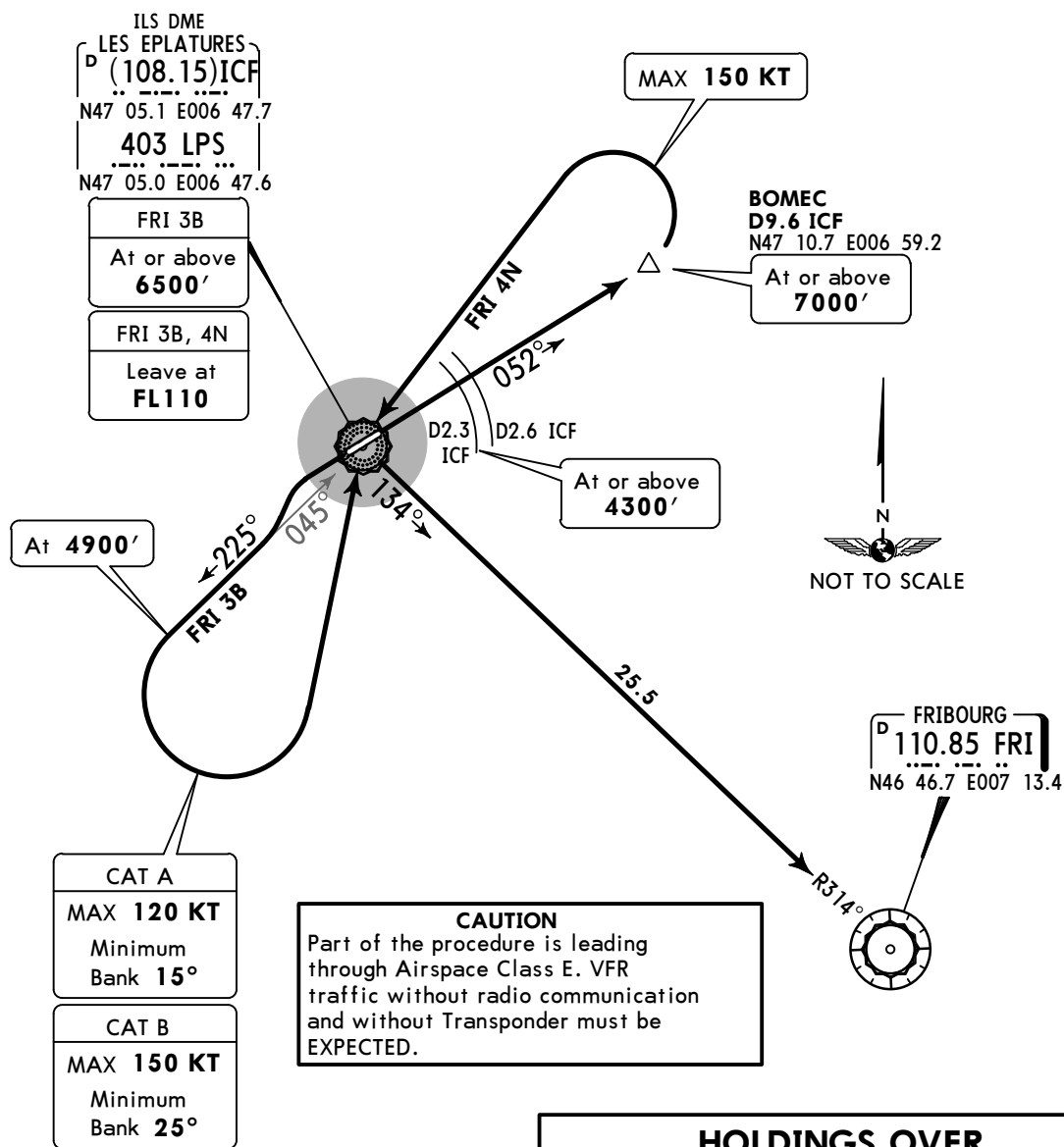
SID

Apt Elev
3366'

Trans level: By ATC Trans alt: 7000'

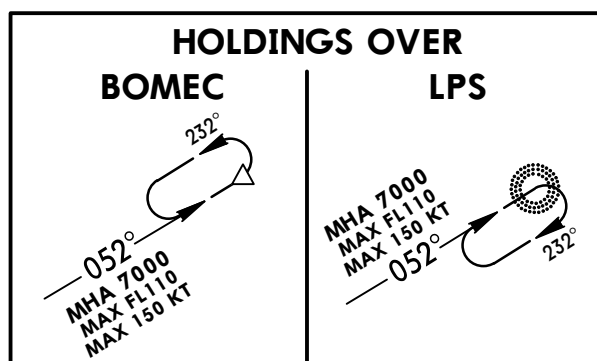


FRIBOURG 3B (FRI 3B)
FRIBOURG 4N (FRI 4N)
DURING MILITARY ACTIVITY AVAILABLE ON REQUEST



These SIDs require minimum climb gradients of
FRI 3B: 6.0% up to 4900'.
FRI 4N: 5.7% up to 7000'.

Gnd speed-KT	75	100	150	200	250	300
6.0% V/V (fpm)	456	608	911	1215	1519	1823
5.7% V/V (fpm)	433	577	866	1155	1443	1732



Initial climb clearance **FL110**

SID	RWY	ROUTING
FRI 3B	24	Intercept 225° bearing from LPS, MAINTAIN visual ground contact up to 3900', at 4900' turn LEFT to LPS, climb in holding to FL110, intercept FRI R-314 inbound to FRI.
FRI 4N	06	Climb on runway heading, MAINTAIN visual ground contact until D2.6 ICF, intercept 052° bearing from LPS to BOMECS, turn LEFT to LPS, climb in holding to FL110, intercept FRI R-314 inbound to FRI.

LSCG
LES EPLATURES

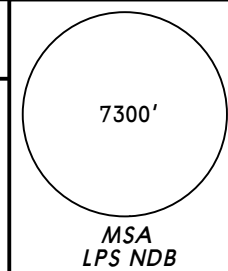
JEPPESEN
27 FEB 15 **10-3B** **Eff 5 Mar**

LES EPLATURES, SWITZERLAND

SID

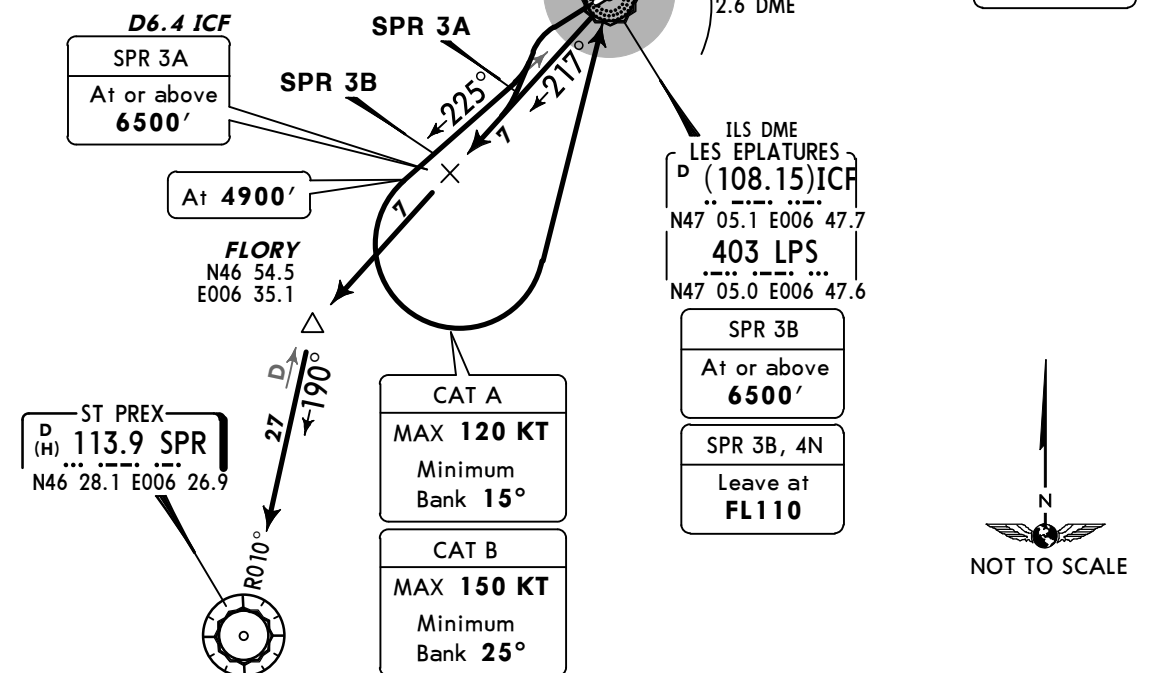
Apt Elev
3366'

Trans level: By ATC Trans alt: 7000'



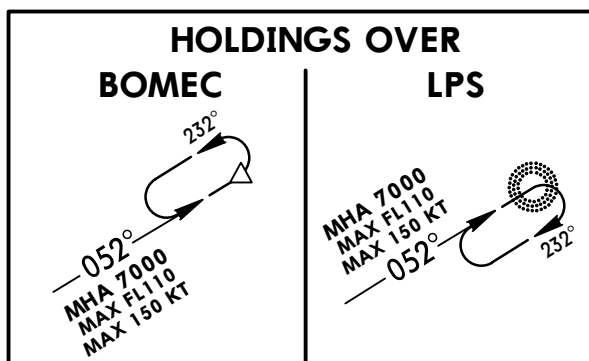
ST PREX 3A (SPR 3A)
ST PREX 3B (SPR 3B)
ST PREX 4M (SPR 4M)
ST PREX 4N (SPR 4N)
RWYS 24, 06 DEPARTURES

CAUTION
Part of the procedure is leading through Airspace Class E. VFR traffic without radio communication and without Transponder must be EXPECTED.



These SIDs require minimum climb gradients of
SPR 3A: 7.2% up to 4700'.
SPR 3B: 6.0% up to 4900'.
SPR 4M, 4N: 5.7% up to 7000'.

Gnd speed-KT	75	100	150	200	250	300
7.2% V/V (fpm)	547	729	1094	1458	1823	2187
6.0% V/V (fpm)	456	608	911	1215	1519	1823
5.7% V/V (fpm)	433	577	866	1155	1443	1732



Initial climb clearance: **SPR 3A, 4M: FL80**
SPR 3B, 4N: FL110

SID	RWY	ROUTING
SPR 3A ①	24	Intercept 217° bearing from LPS to FLORY, MAINTAIN visual ground contact up to 3900', at FLORY intercept SPR R-010 inbound to SPR.
SPR 3B		Intercept 225° bearing from LPS, MAINTAIN visual ground contact up to 3900', at 4900' turn LEFT to LPS, climb in holding to FL110, 217° bearing to FLORY, intercept SPR R-010 inbound to SPR.
SPR 4M ①	06	Climb on runway heading, MAINTAIN visual ground contact until ICF 2.6 DME, intercept 052° bearing from LPS to BOMECE, turn LEFT to LPS, 217° bearing to FLORY, intercept SPR R-010 inbound to SPR.
SPR 4N		Climb on runway heading, MAINTAIN visual ground contact until ICF 2.6 DME, intercept 052° bearing from LPS to BOMECE, turn LEFT to LPS, climb in holding to FL110, 217° bearing to FLORY, intercept SPR R-010 inbound to SPR.

① Only available during MIL activity and between NOV and MAR and during night.

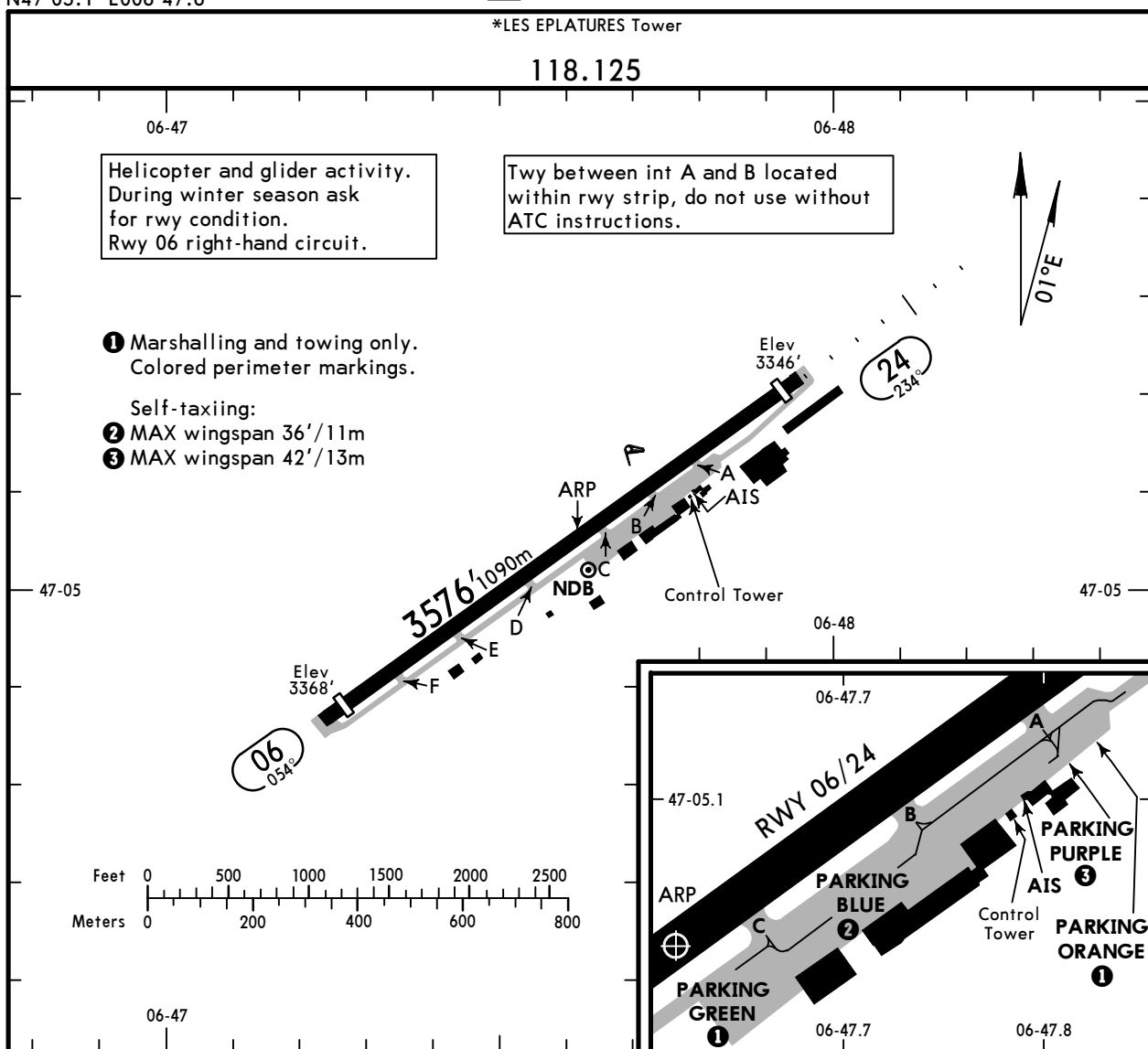
LSGC

Apt Elev **3366'**
N47 05.1 E006 47.6

JEPPESEN LES EPLATURES, SWITZERLAND

27 NOV 15 (10-9) Eff 10 Dec

LES EPLATURES



ADDITIONAL RUNWAY INFORMATION

RWY	HIRL (80m)	APAPI-L (4.3°)	grooved	USABLE LENGTHS		TAKE-OFF	WIDTH
				Threshold	Glide Slope		
06 24	HIRL (80m)	APAPI-L (4.3°)	grooved	3458' 1054m	2806' 855m	5	89' 27m
	HIRL (80m)	HIALS APAPI-L (3.83°)	grooved	3474' 1059m			

4 NOISE ABATEMENT PROCEDURES: Take-off rwy 24 preferred for single engine acct.

5 TAKE-OFF RUN AVAILABLE

RWY 06	RWY 24
Additional 131' (40m) starter extension available.	Additional 177' (54m) starter extension available.

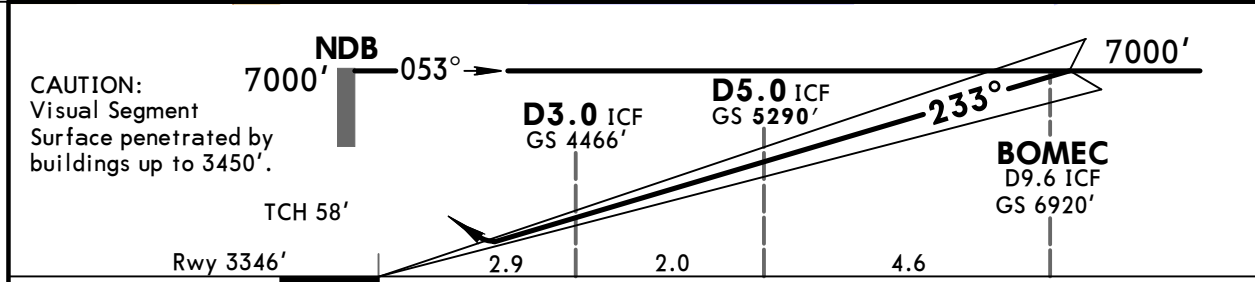
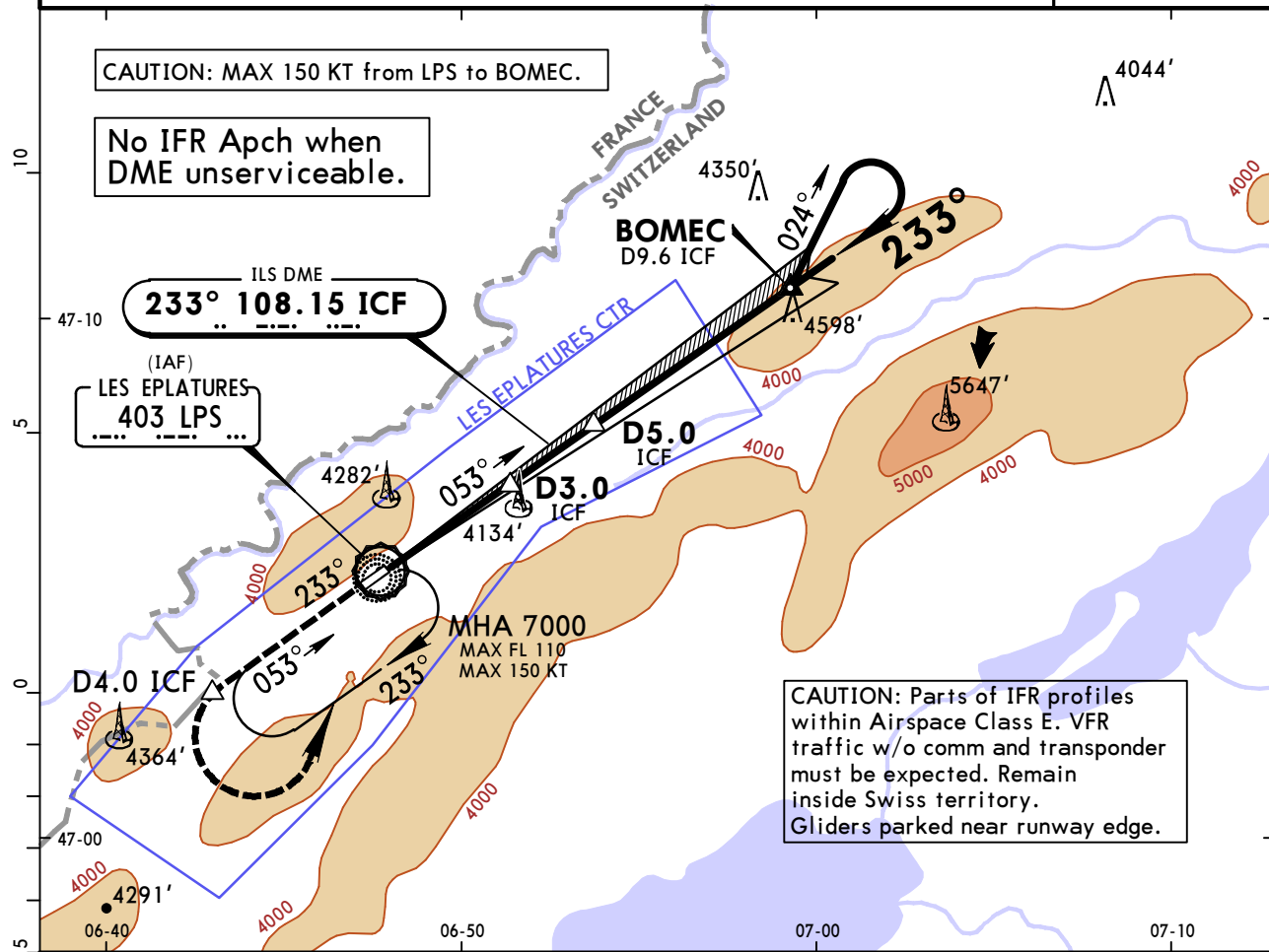
Standard		TAKE-OFF	
Rwy 06		Rwy 24	
A	1000' - 1500m	700' - 1500m	
B			
C			
D		NOT APPLICABLE	

LSGC LES EPLATURES

27 NOV 15
Eff 10 Dec (11-1) CAT A & B

JEPPESSEN LES EPLATURES, SWITZERLAND ILS Rwy 24

GENEVA Delta (APP) 119.175			*LES EPLATURES Tower 118.125		
LOC ICF 108.15	Final Apch Crs 233°	GS D5.0 ICF 5290' (1944')	ILS DA(H) Refer to Minimums	Apt Elev 3366' Rwy 3346'	
MISSED APCH: Initial climb clearance 7000'. Climb STRAIGHT AHEAD. At 5000' but not before D4.0 ICF turn LEFT (MAX 150 KT/ MIM bank angle 25°) to NDB and hold. Cross D4.0 ICF at 5000' or above.					
Alt Set: hPa Rwy Elev: 117 hPa Trans level: By ATC Trans alt: 7000'				MSA LPS NDB	



Gnd speed-Kts	70	90	100	120	140	160	HIALS APAPI Refer to Missed Apch above
ILS GS	3.50°	439	564	627	752	877	

PANS OPS	Standard		STRAIGHT-IN LANDING RWY 24		LOC (GS out)	CIRCLE-TO-LAND		
	Missed apch climb grad mim 5.0%		Missed apch climb grad mim 2.5%			Based on rwy 24 thresh elev of 3346'		
	DA(H) 3846' (500')		DA(H) A: 3846' (500') B: 3848' (502')		Remain within CTR limits 1 2			
	FULL	ALS out	FULL	ALS out	Max Kts	MDA(H)	VIS	
A	1500m	1500m	1500m	SEE 11-2	100	4590' (1244')	5000m	
B					135	5020' (1674')	5000m	
C	NOT APPLICABLE					C	NOT APPLICABLE	
D	NOT APPLICABLE					D	NOT APPLICABLE	

1 No turn LEFT from final before D2.4 ICF. 2 Turn to base and final inside D3.2 ICF.
 CHANGES: Procedure. Notes. Minimums. © JEPPESSEN, 2001, 2015. ALL RIGHTS RESERVED.

LSGC/ZHV
LES EPLATURES

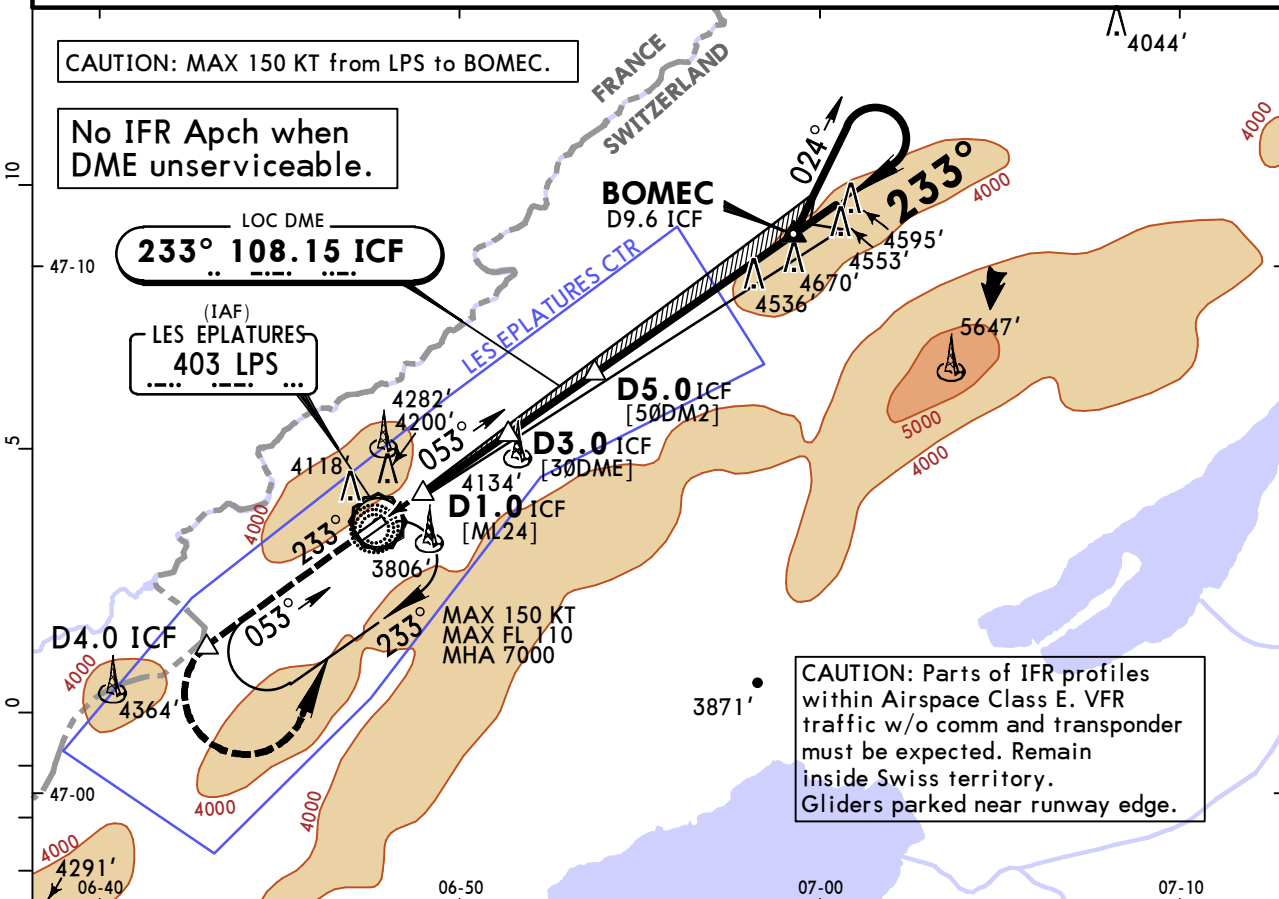
11 JAN 19

11-2

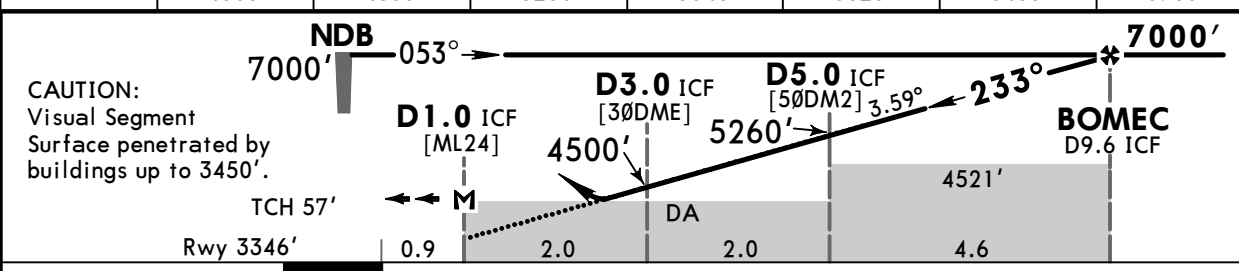
CAT A & B

LES EPLATURES, SWITZERLAND
LOC Rwy 24

GENEVA Delta (APP) 119.175			*LES EPLATURES Tower 118.125		7300 MSA LPS NDB
LOC ICF 108.15	Final Apch Crs 233°	Procedure Alt BOMEC 7000' (3654')	DA/MDA(H) 4380' (1037')	Apt Elev 3366' Rwy 3346'	
MISSED APCH: Initial climb clearance 7000'. Climb STRAIGHT AHEAD. At 5000' but not before D4.0 ICF turn LEFT (MAX 150 KT/ MIM bank angle 25°) to NDB and hold. Cross D4.0 ICF at 5000' or above.					
Alt Set: hPa		Rwy Elev: 117 hPa	Trans level: By ATC		Trans alt: 7000'



ICF DME	3.0	4.0	5.0	6.0	7.0	8.0	9.0
ALTITUDE	4500'	4880'	5260'	5640'	6020'	6400'	6780'



Gnd speed-Kts	70	90	100	120	140	160
Descent Angle 3.59°	445	572	635	762	889	1017

MAP at D1.0 ICF						
HIALS	Refer to Missed Apch above					

Standard STRAIGHT-IN LANDING RWY 24 CDFA DA/MDA(H) 4380' (1037')		CIRCLE-TO-LAND Based on rwy 24 thresh elev of 3346' Remain within CTR limits	
	ALS out	Max Kts	MDA(H) 1 2 VIS
A	4500m	100	4590' (1244') 5000m
B		135	5020' (1674') 5000m
C	NOT APPLICABLE	C	NOT APPLICABLE
D		D	

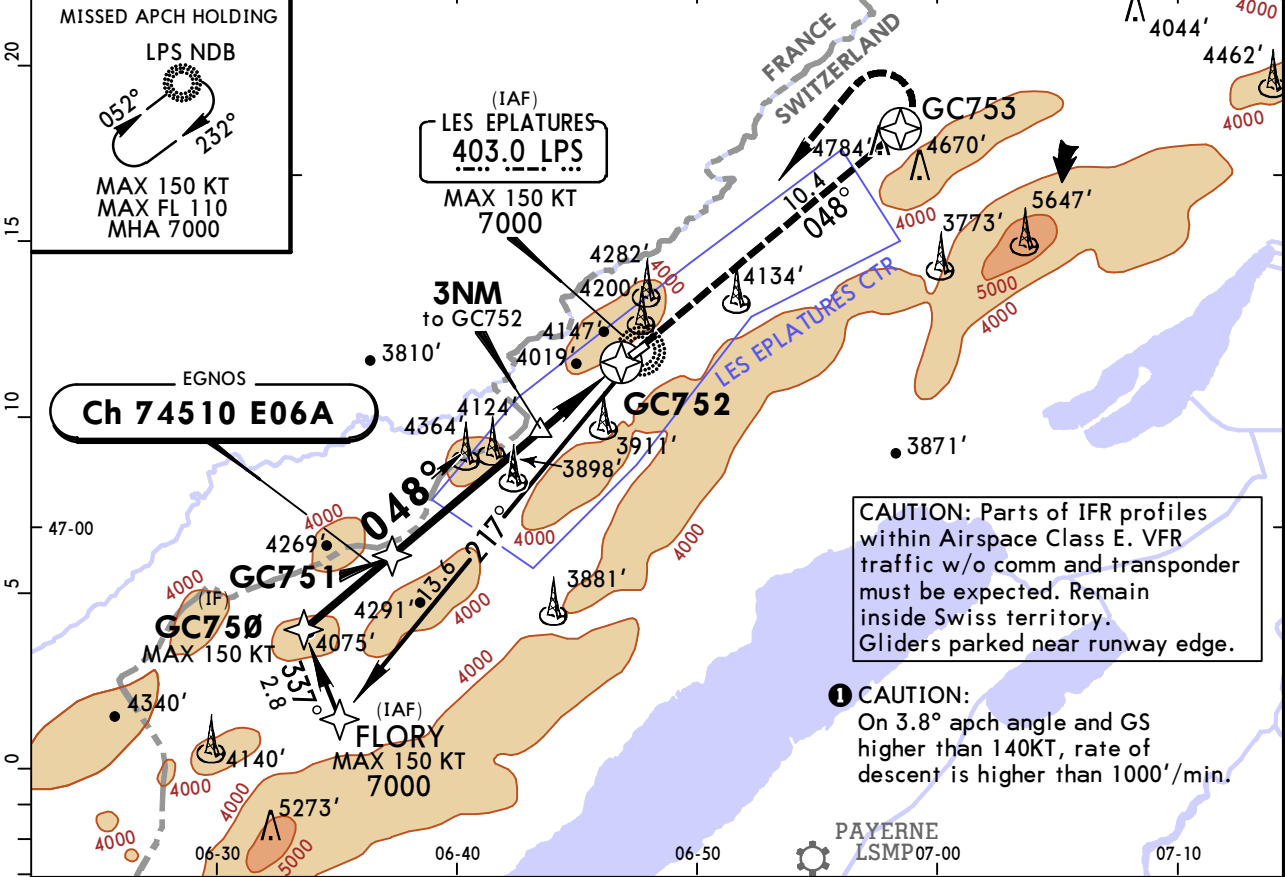
1No turn LEFT from final before D2.4 ICF. **2**Turn to base and final inside D3.2 ICF.

LSGC/ZHV
LES EPLATURES

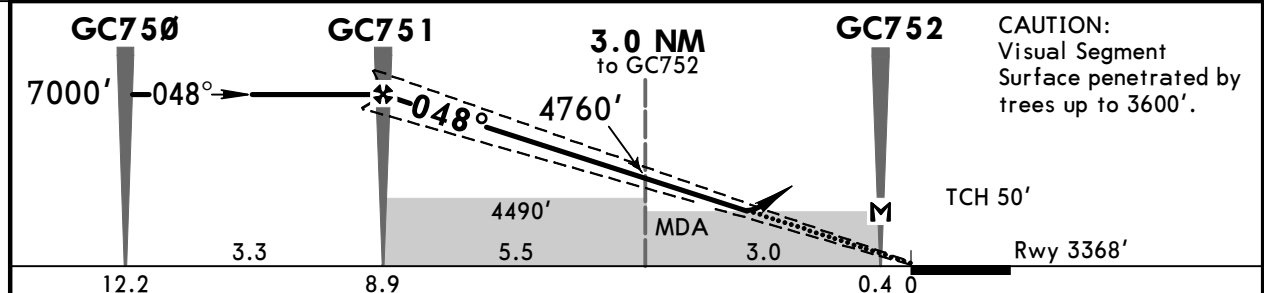
JEPPESEN LES EPLATURES, SWITZERLAND
RNAV (GNSS) Rwy 06

11 JAN 19 **12-1** **CAT A & B**

GENEVA Delta (APP) 119.175			*LES EPLATURES Tower 118.125		
EGNOS Ch 74510 E06A	Final Apch Crs 048°	Procedure Alt GC751 7000' (3634')	LPV DA(H) Refer to Minimums	Apt Elev 3366'	7300 MSA LPS NDB
MISSED APCH: Initial climb clearance 7000'. Climb STRAIGHT AHEAD to GC753, then turn LEFT (MAX 130 KT) to NDB and hold. Cross GC753 at 7000' or above. Minimum climb gradient 5% to 7000' to remain inside controlled airspace.					
Alt Set: hPa		Rwy Elev: 117 hPa	Trans level: By ATC		Trans alt: 7000



DIST to GC752	8.0	7.0	6.0	5.0	4.0	3.0	2.0	1.0
ALTITUDE	6780'	6380'	5970'	5570'	5170'	4760'	4360'	3960'



Gnd speed-Kts	70	90	100	120	140	160	HIRL APAPI-L	7000'	GC753	
Descent Angle	3.80°	471	605	673	807	942				1076
LPV: MAP at DA										
LNAV: MAP at GC752										

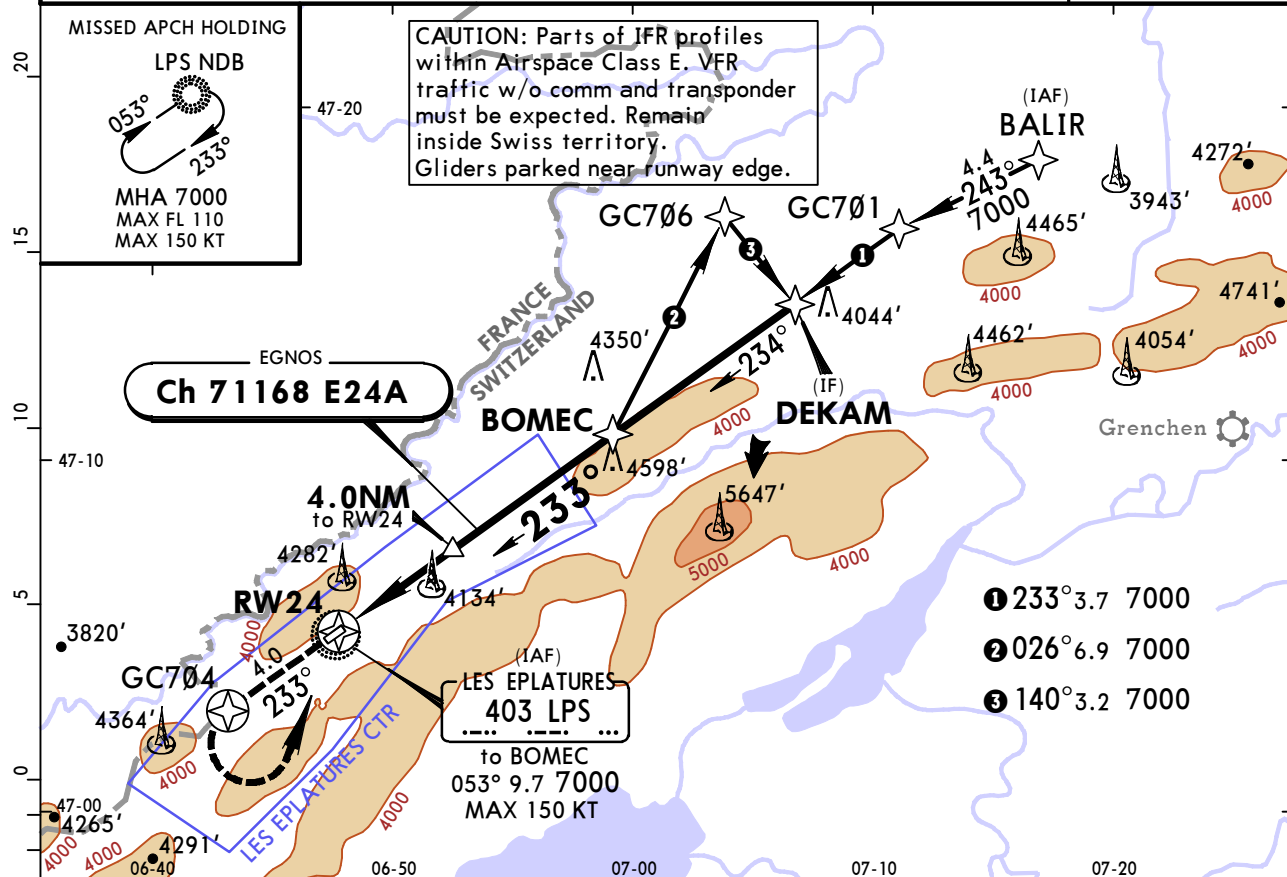
Standard				STRAIGHT-IN LANDING RWY 06			CIRCLE-TO-LAND			
Missed apch climb gradient mim 5.0%		LPV CAT I		Missed apch climb gradient mim 2.5%		LNAV CDFA			Remain within CTR limits	
DA(H) A: 3898' (530') B: 3914' (546')		DA(H) A: 4157' (789') B: 4175' (807')		DA/MDA(H) 4420' (1052')			Max Kts			
FULL		ALS out		FULL		ALS out		MDA(H) VIS		
A	RVR 1500m		RVR 1500m		RVR 1500m			100	4590' (1224')	1500m
B	RVR 1500m		RVR 1500m		RVR 1500m			135	5020' (1654')	1600m
C	NOT APPLICABLE									
D	NOT APPLICABLE									

LSGC/ZHV
LES EPLATURES

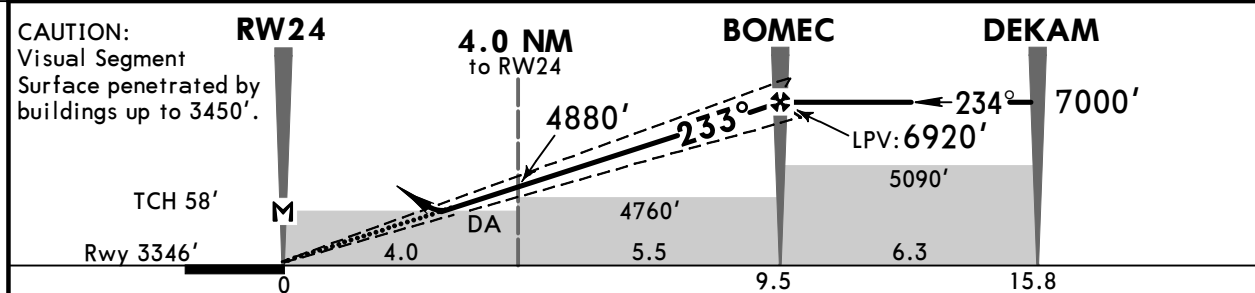
JEPPESEN 26 JAN 18
Eff 1 Feb (12-2) **CAT A & B**

LES EPLATURES, SWITZERLAND
RNAV (GNSS) Rwy 24

GENEVA Delta (APP) 119.175				*LES EPLATURES Tower 118.125				
EGNOS Ch 71168 E24A		Final Apch Crs 233°		Procedure Alt LPV BOMEC LNAV		LPV DA(H) Refer to Minimums		
				Apt Elev 3366'		Rwy 3346'		
		6920' (3574')		7000' (3654')				
MISSED APCH: Initial climb clearance 7000'. Climb STRAIGHT AHEAD to GC704 turn LEFT (MAX 150 KT/ MIM bank angle 20°) to NDB and hold.							7300 MSA LPS NDB	
Alt Set: hPa		Rwy Elev: 117 hPa		Trans level: By ATC		Trans alt: 7000		
For noise abatement do not undershoot APAPI.								



DIST to RW24	1.0	2.0	3.0	4.0	5.0	6.0	7.0	8.0	9.0
ALTITUDE	3770'	4140'	4510'	4880'	5260'	5630'	6000'	6370'	6740'



Gnd speed-Kts	70	90	100	120	140	160	HIALS APAPI	7000'	GC704	LPS 403 LT
LPV Glide Path Angle 3.50°	434	557	619	743	867	991				
LNAV Descent Angle 3.58°	444	570	634	760	887	1014				
LPV: MAP at DA	LNAV: MAP at RW24									

Standard				STRAIGHT-IN LANDING RWY 24				CIRCLE-TO-LAND Based on rwy 24 thresh elev of 3346'			
Missed apch climb gradient mim 5.0%		LPV CAT I		Missed apch climb gradient mim 2.5%		LNAV		CDFA		Remain within CTR limits 1 2	
DA(H) A: 3846' (500') B: 3856' (510')		DA(H) A: 4130' (784') B: 4143' (797')		DA/MDA(H) 4390' (1044')		ALS out		Max Kts		MDA(H) VIS	
FULL		ALS out		FULL		ALS out		100		4590' (1244') 1500m	
A		RVR 1500m		RVR 1500m		RVR 1500m		135		5020' (1674') 1600m	
B		NOT APPLICABLE		NOT APPLICABLE		NOT APPLICABLE		C		NOT APPLICABLE	
C		NOT APPLICABLE		NOT APPLICABLE		NOT APPLICABLE		D		NOT APPLICABLE	
D		NOT APPLICABLE		NOT APPLICABLE		NOT APPLICABLE		NOT APPLICABLE		NOT APPLICABLE	

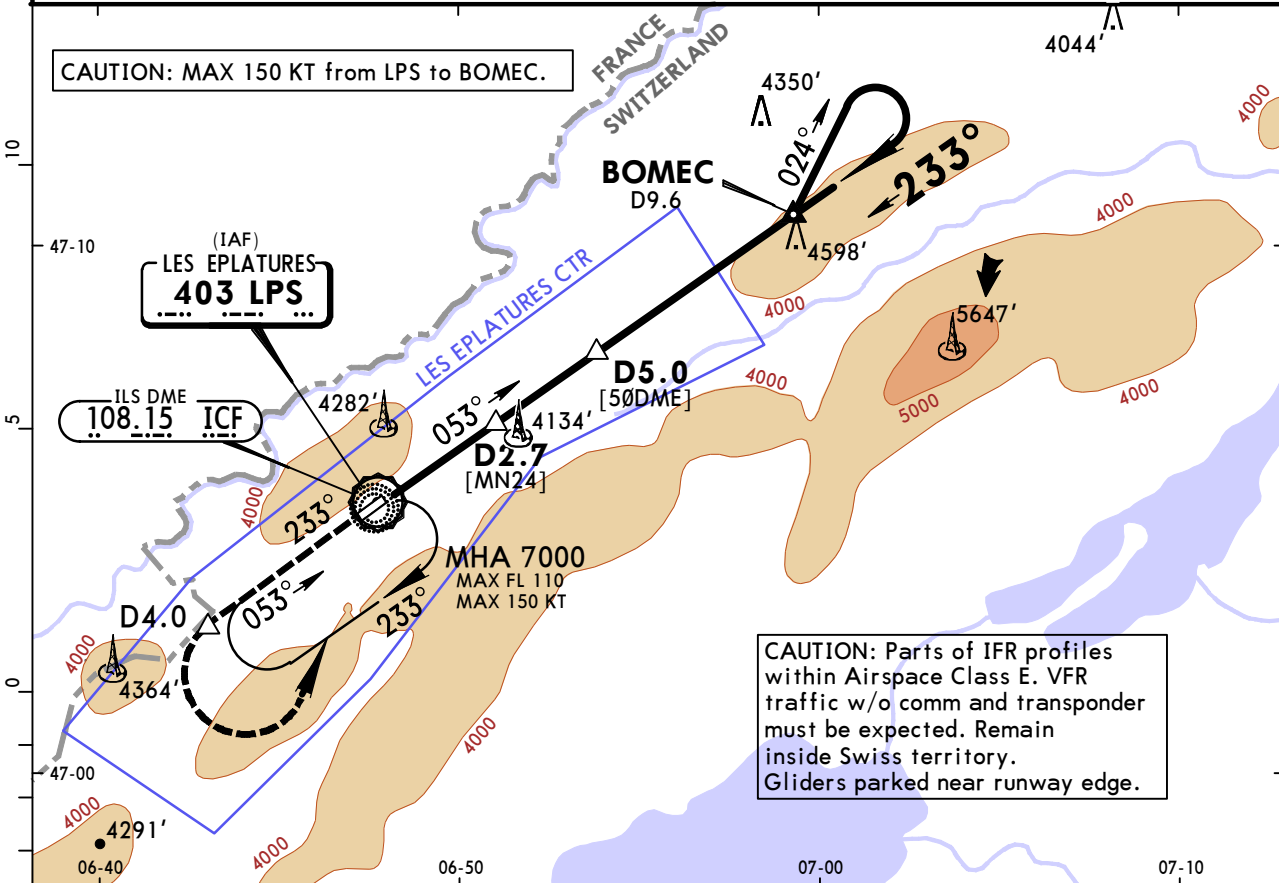
LSGC/ZHV LES EPLATURES

26 JAN 18
Eff 1 Feb

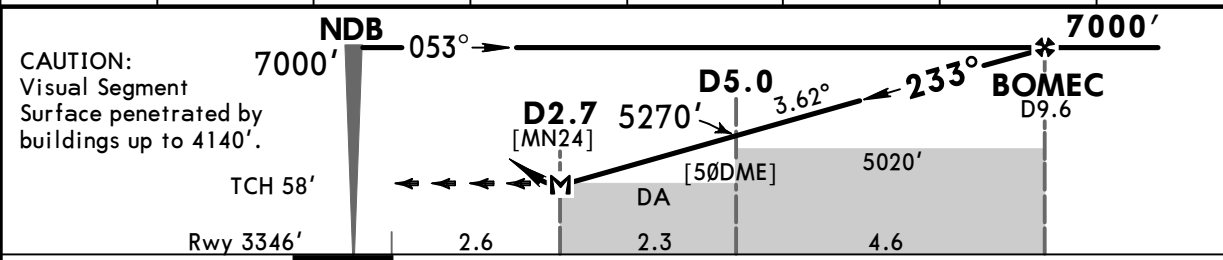
16-1 **CAT A & B**

JEPPESEN LES EPLATURES, SWITZERLAND NDB Rwy 24

GENEVA Delta (APP) 119.175			*LES EPLATURES Tower 118.125		7300' MSA LPS NDB
NDB LPS 403	Final Apch Crs 233°	Procedure Alt BOMEC 7000' (3654')	DA(H) 4380' (1034')	Apt Elev 3366' Rwy 3346'	
MISSED APCH: Initial climb clearance 7000'. Climb on 233° to intercept 233° from NDB. At D4.0 turn LEFT (MAX 150 KT/MNM bank angle 20°) to NDB and hold. Cross D4.0 at 5000' or above.					
Alt Set: hPa		Rwy Elev: 117 hPa	Trans level: By ATC		Trans alt: 7000'
For noise abatement do not undershoot APAPI.					



ICF DME	3.0	4.0	5.0	6.0	7.0	8.0	9.0
ALTITUDE	4500'	4880'	5260'	5640'	6030'	6410'	6790'



Gnd speed-Kts	70	90	100	120	140	160	
Descent Angle	3.62°	448	577	641	769	897	1025
MAP at D2.7	Standard						

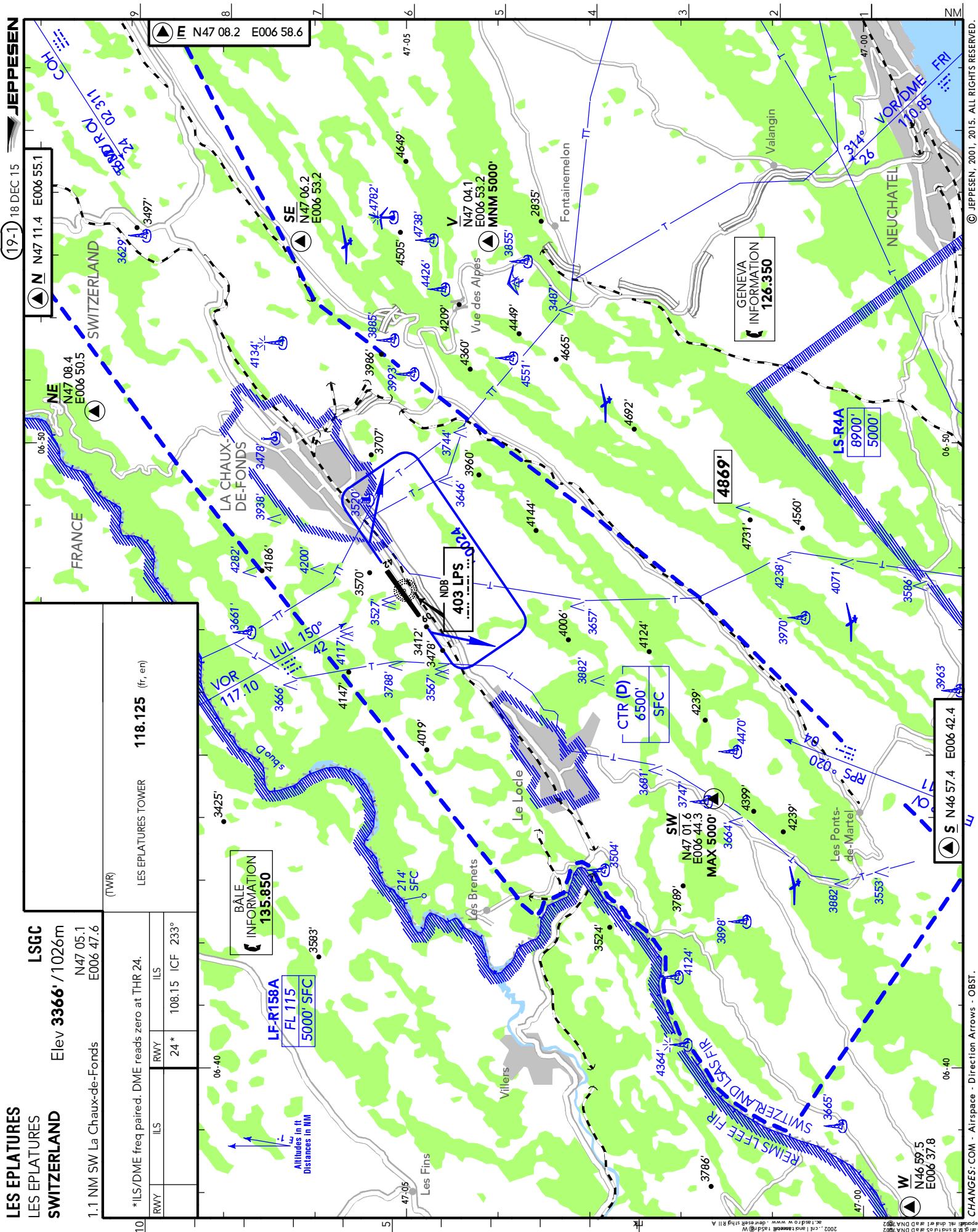
HIALS

APAPI

Refer to Missed Apch above

Standard		STRAIGHT-IN LANDING RWY 24	
CDFA		DA/MDA(H) 4380' (1034')	
ALS out		4500m	
A	NOT APPLICABLE		
B	NOT APPLICABLE		
C	NOT APPLICABLE		
D	NOT APPLICABLE		

CIRCLE-TO-LAND		
Based on rwy 24 thresh elev of 3346'		
Remain within CTR limits		
Max Kts	MDA(H)	VIS
100	4590' (1244')	5000m
135	5020' (1674')	5000m
C	NOT APPLICABLE	
D	NOT APPLICABLE	



LES EPLATURES
LSGC
 Elev **3366'** / 1026m
 N47 05.1
 E006 47.6

1.1 NM SW La Chaux-de-Fonds

ILS	
RWY	24*
ILS	108.15 ICF 233°

(TWR)
 LES EPLATURES TOWER **118.125** (fr, en)

BALE
 INFORMATION
135.850

LF-R158A
FL 115
5000' SFC

CTR (D)
6500'
SFC

LS-R4A
8900'
5000'

GENEVA
 INFORMATION
126.350

Chart changes since cycle 06-2019

ADD = added chart, REV = revised chart, DEL = deleted chart.

ACT	PROCEDURE IDENT	INDEX	REV DATE	EFF DATE
-----	-----------------	-------	----------	----------

LES EPLATURES, (LES EPLATURES - LSGC)

TERMINAL CHART CHANGE NOTICES

Chart Change Notices for Airport LSGC

Type: Terminal

Effectivity: Temporary

Begin Date: Immediately

End Date: Until Further Notice

All charts - IATA code ZHV

Type: Terminal (VFR)

Effectivity: Permanent

Begin Date: Immediately

End Date: No end date

OBST group 3541' added near THR 06. OBST group 3449' added near THR 24.

Chart Change Notices for Country CHE

Type: Gen Tmnl (VFR)

Effectivity: Permanent

Begin Date: Immediately

End Date: No end date

Lower limit of LS-T areas for GLD same as lower limit of TMA.