

List of pages in this Trip Kit

Trip Kit Index

Airport Information For RCBS

Terminal Charts For RCBS

Revision Letter For Cycle 16-2023

Change Notices

Notebook

General Information

Location: KINMEN TWN
ICAO/IATA: RCBS / KNH
Lat/Long: N24° 25.73', E118° 21.67'
Elevation: 56 ft

Airport Use: Public
Daylight Savings: Not Observed
UTC Conversion: -8:00 = UTC
Magnetic Variation: 4.0° W

Fuel Types: Jet A-1
Customs: Restricted
Airport Type: IFR
Landing Fee: No
Control Tower: Yes
Jet Start Unit: No
LLWS Alert: No
Beacon: Yes

Sunrise: 2154 Z
Sunset: 1006 Z

Runway Information

Runway: 06
Length x Width: 9856 ft x 148 ft
Surface Type: concrete
TDZ-Elev: 45 ft
Lighting: Edge, ALS
Displaced Threshold: 1575 ft

Runway: 24
Length x Width: 9856 ft x 148 ft
Surface Type: concrete
TDZ-Elev: 28 ft
Lighting: Edge, ALS

Communication Information

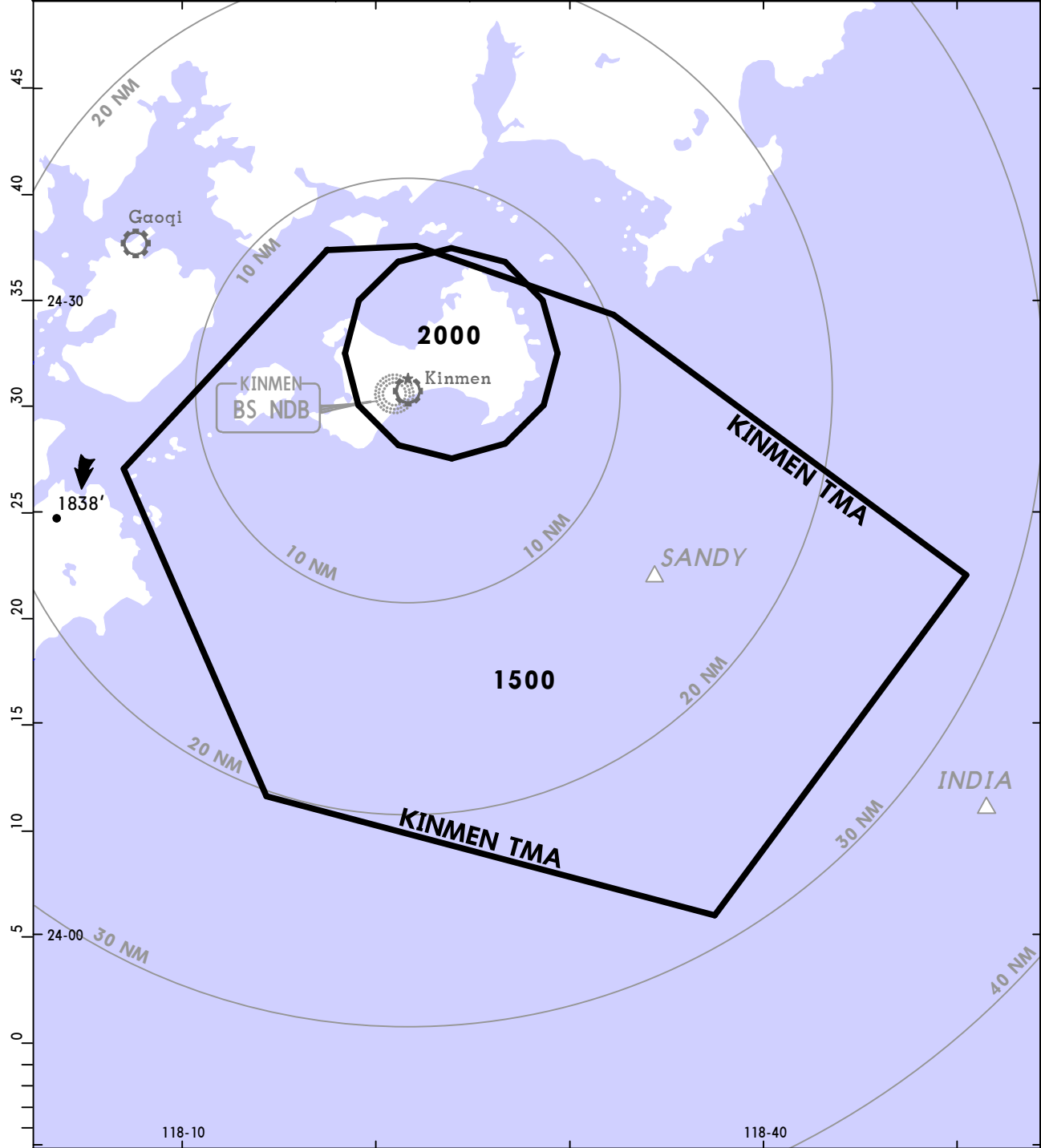
ATIS: 127.200
Kinmen Tower: 126.200
Kinmen Tower: 118.000
Kinmen Ground: 126.200
Kaohsiung Approach: 124.600
Kaohsiung Approach: 133.100

RCBS/KNH KINMEN

JEPPESEN
6 JAN 12 **(10-1R)**

KINMEN, TAIWAN
RADAR MINIMUM ALTITUDES

KAOHSIUNG Approach (R) 124.6	Apt Elev 70'	Alt Set: hPa Trans level: FL 130 Trans alt: 11000' This chart may only be used for pilots to cross-check altitudes assigned while under RADAR CONTROL.
--	------------------------	---



1. Range marks are centered at RCBS ARP (N24° 25' 44" E118° 21' 40").
2. Minimum altitudes are calculated taking into account of minimum clearance above terrain/obstacles. Radar control service cannot be provided to aircraft below the applicable minimum. However, aircraft at designated altitude in relevant sector is not assured of radar contact.
3. Altitudes/Levels/Heights are in feet AMSL.
4. Only significant spot heights are shown.
5. LOSS OF COMMUNICATION
 - a. SQUAWK 7600 immediately, and
 - b. Follow ENR 1.6.4 "Radio Communication Failure Procedures."

RCBS/KNH
KINMEN



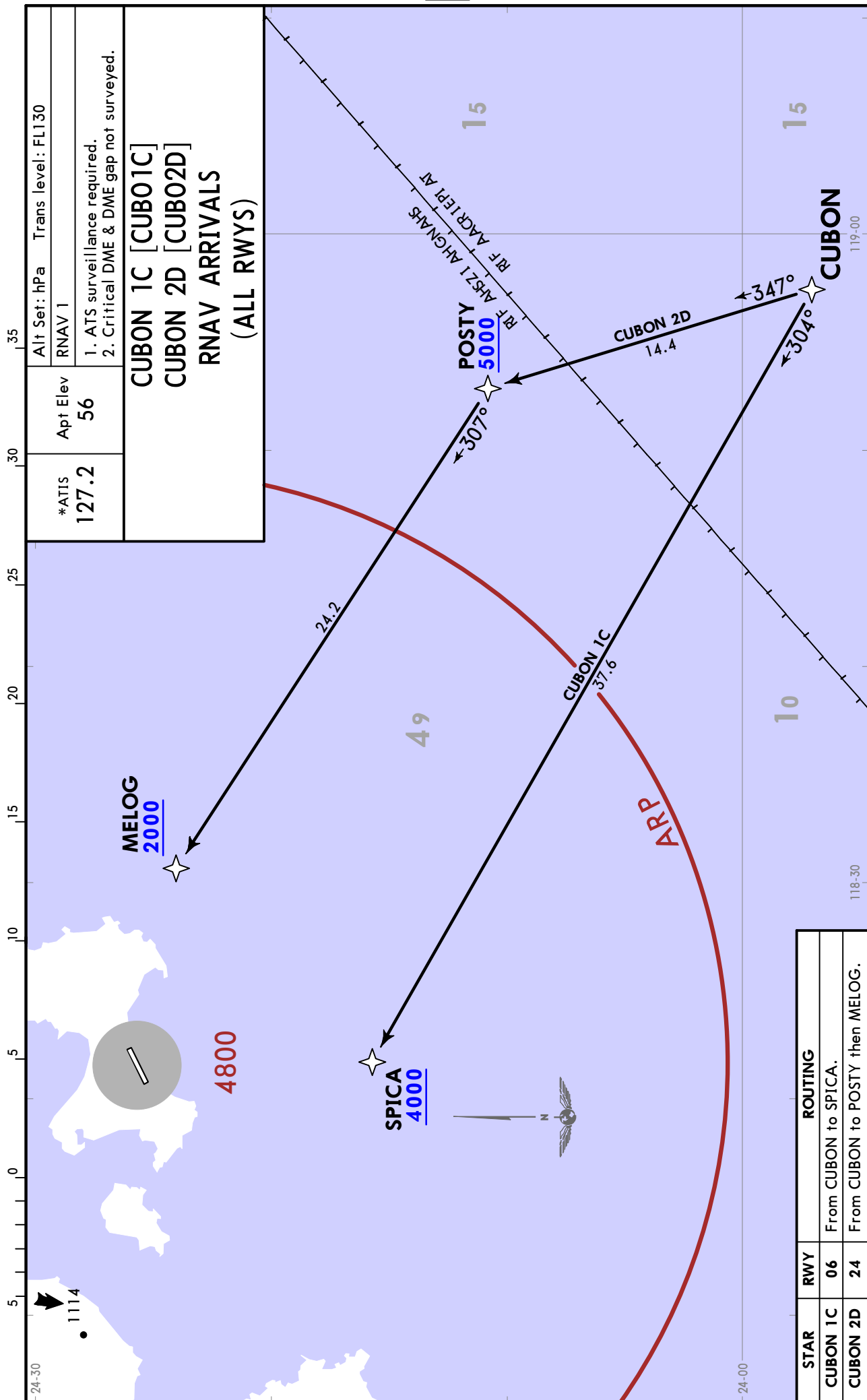
KINMEN, TAIWAN

18 MAR 22

10-2

Eff 24 Mar

RNAV STAR



*ATIS 127.2	Apt Elev 56	Alt Set: hPa Trans level: FL130
RNAV 1		
1. ATIS surveillance required. 2. Critical DME & DME gap not surveyed.		
CUBON 1C [CUBO1C] CUBON 2D [CUBO2D] RNAV ARRIVALS (ALL RWYS)		

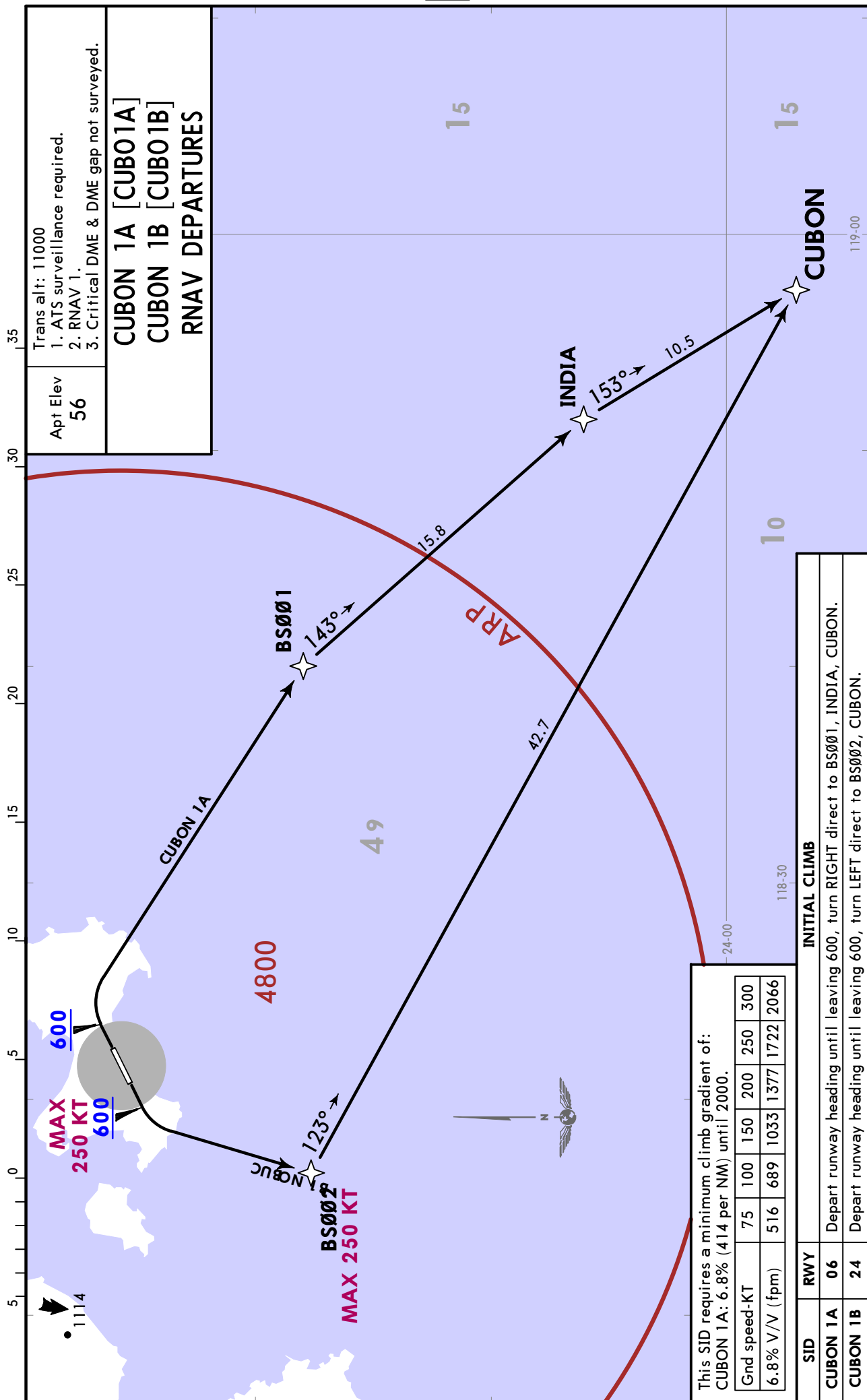
STAR	RWY	ROUTING
CUBON 1C	06	From CUBON to SPICA.
CUBON 2D	24	From CUBON to POSTY then MELOG.

CHANGES: CUBON 1D renamed CUBON 2D and revised.

RCBS/KNH
KINMEN

JEPPESSEN
29 NOV 19 10-3 Eff 5 Dec

KINMEN, TAIWAN
RNAV SID



Trans alt: 11000
1. ATS surveillance required.
2. RNAV 1.
3. Critical DME & DME gap not surveyed.

Apt Elev
56

CUBON 1A [CUB01A]
CUBON 1B [CUB01B]
RNAV DEPARTURES

This SID requires a minimum climb gradient of:
CUBON 1A: 6.8% (414 per NM) until 2000.

Gnd speed-KT	75	100	150	200	250	300
6.8% V/V (fpm)	516	689	1033	1377	1722	2066

INITIAL CLIMB	
SID	RWY
CUBON 1A	06
Depart runway heading until leaving 600, turn RIGHT direct to BS001, INDIA, CUBON.	
CUBON 1B	24
Depart runway heading until leaving 600, turn LEFT direct to BS002, CUBON.	

CHANGES: New procedures at this airport.

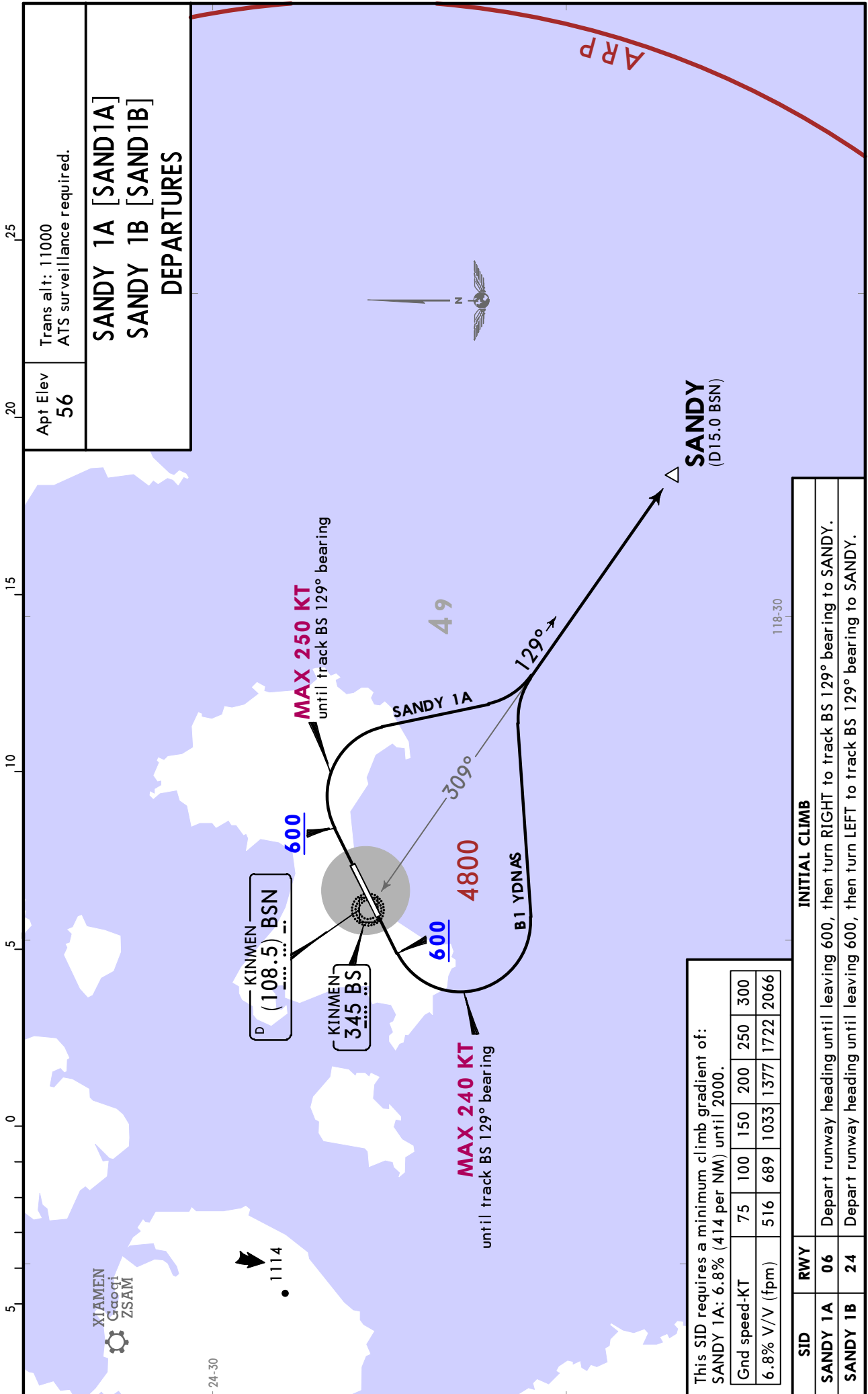
© JEPPESSEN, 2019. ALL RIGHTS RESERVED.

RCBS/KNH
KINMEN

JEPPESEN
10 JUN 22 (10-3B) Eff 16 Jun

KINMEN, TAIWAN

SID



Trans alt: 11000
ATS surveillance required.

Apt Elev
56

SANDY 1A [SAND1A]
SANDY 1B [SAND1B]
DEPARTURES

This SID requires a minimum climb gradient of:
SANDY 1A: 6.8% (414 per NM) until 2000.

Gnd speed-KT	75	100	150	200	250	300
6.8% V/V (fpm)	516	689	1033	1377	1722	2066

INITIAL CLIMB	
SID	RWY
SANDY 1A	06
SANDY 1B	24

Depart runway heading until leaving 600, then turn RIGHT to track BS 129° bearing to SANDY.
Depart runway heading until leaving 600, then turn LEFT to track BS 129° bearing to SANDY.

RCBS/KNH

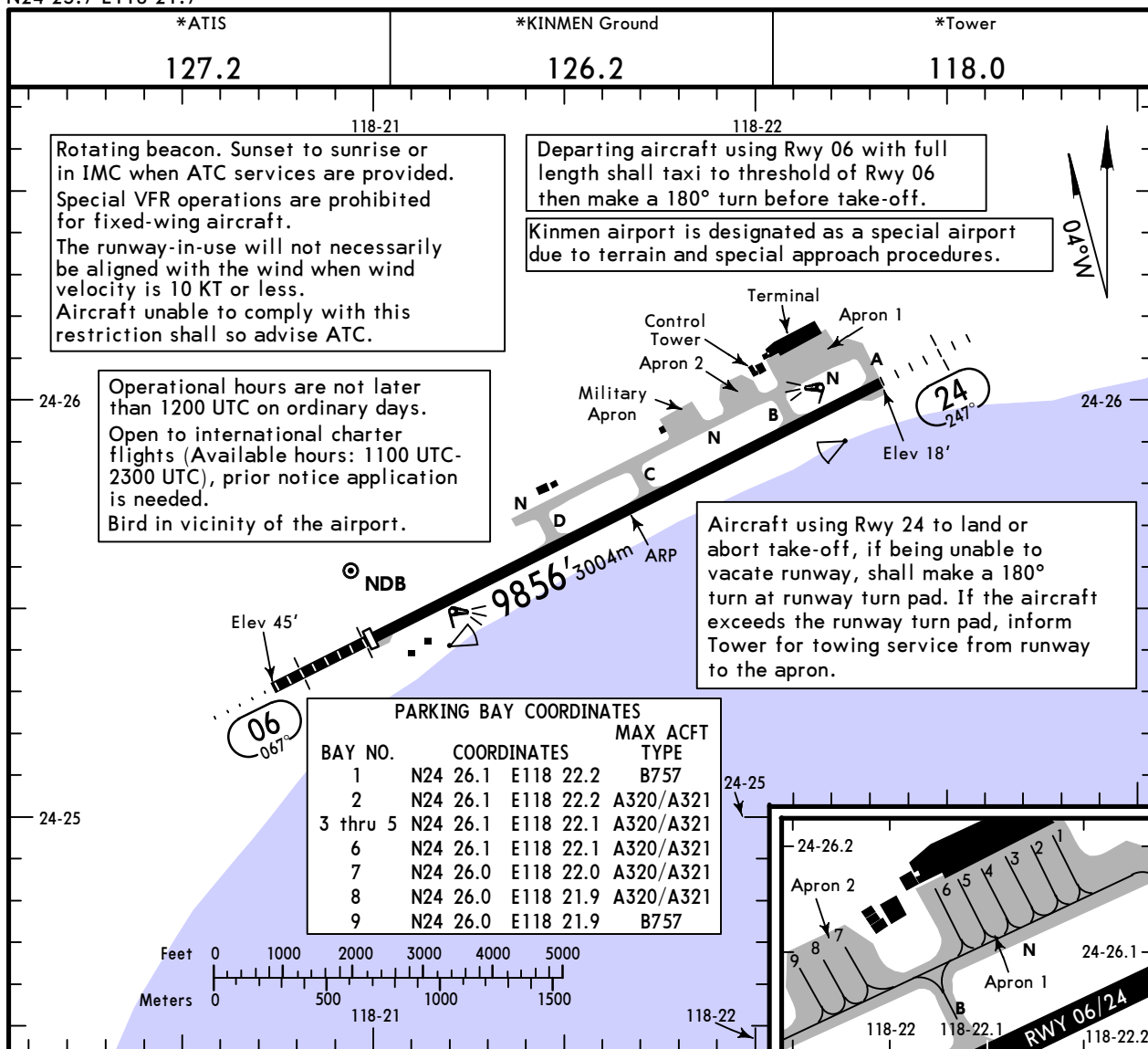
JEPPESSEN

KINMEN, TAIWAN

Apt Elev 56'
N24 25.7 E118 21.7

18 MAR 22 (10-9) Eff 24 Mar

KINMEN



ADDITIONAL RUNWAY INFORMATION

RWY					USABLE LENGTHS			WIDTH
					LANDING BEYOND		TAKE-OFF	
	HIRL (60m)	SSALR	PAPI-R (angle 3.00°)	RVR	Threshold	Glide Slope		
06	HIRL (60m)	SSALR	PAPI-R (angle 3.00°)	RVR	8281' 2524m	7157' 2181m	①	148'
24	HIRL (60m)	MALSF		RVR		8756' 2669m		45m

① TAKE-OFF RUN AVAILABLE

RWY 06:

From rwy head 8281' 2524m
Twy D 5253' 1601m

RWY 24:

From rwy head 9856' 3004m
Twy B 8455' 2577m
Twy C 6119' 1865m

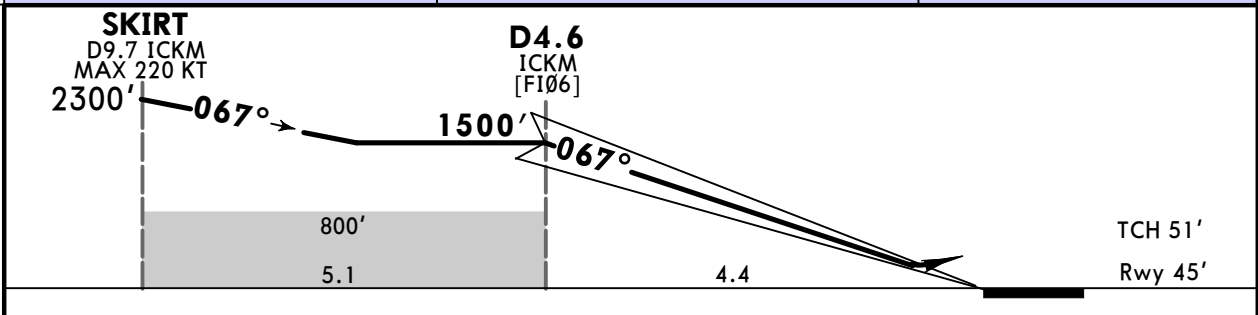
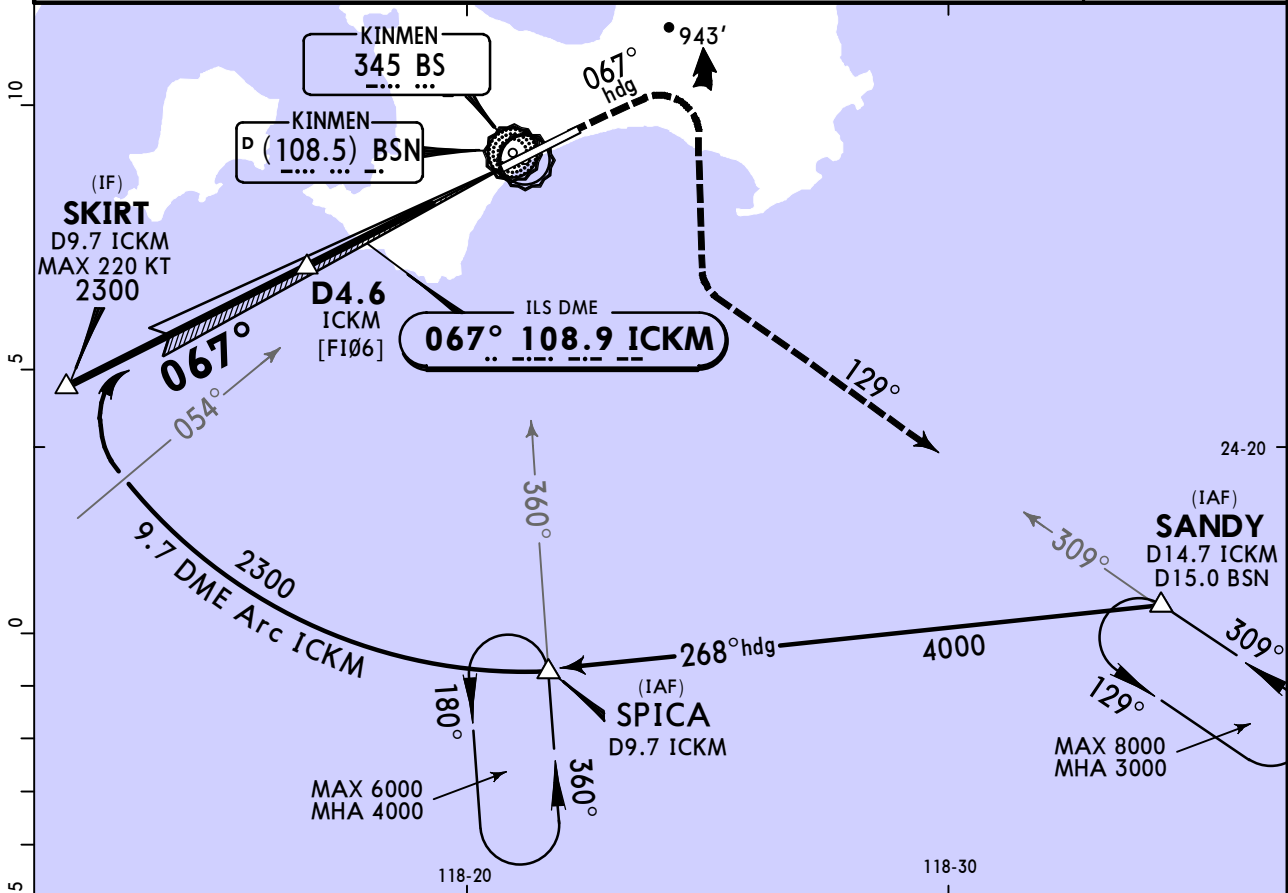
State	TAKE-OFF	
	All Rwys	
	RL & RCLM	NIL (DAY Only)
1 & 2 Eng	R/V500m	V1600m
3 & 4 Eng		R/V800m

RCBS/KNH
KINMEN

JEPPESSEN
14 OCT 22 (11-1)

KINMEN, TAIWAN
ILS Rwy 06

*ATIS 127.2		KAOHSIUNG Approach 124.6 133.1		*KINMEN Tower 118.0	*Ground 126.2
LOC ICKM 108.9	Final Apch Crs 067°	D4.6 ICKM 1500' (1455')	DA(H) Refer to Minimums	Apt Elev 56' Rwy 45'	4800 MSA ARP
MISSED APCH: Climb on heading 067° until leaving 500', turn RIGHT to track BS NDB 129° bearing to SANDY. Climb to 3000' and hold. Refer to minimums for missed apch climb gradients.					
Alt Set: hPa Rwy Elev: 2 hPa Trans level: FL130 Trans alt: 11000'					
1. DME required. 2. ATS surveillance required.					



Gnd speed-Kts	70	90	100	120	140	160	SSALR PAPI	500' on	067° hdg	3000'	BS 345	SANDY
Gs	3.00°	372	478	531	637	849		↑	RT	129°		

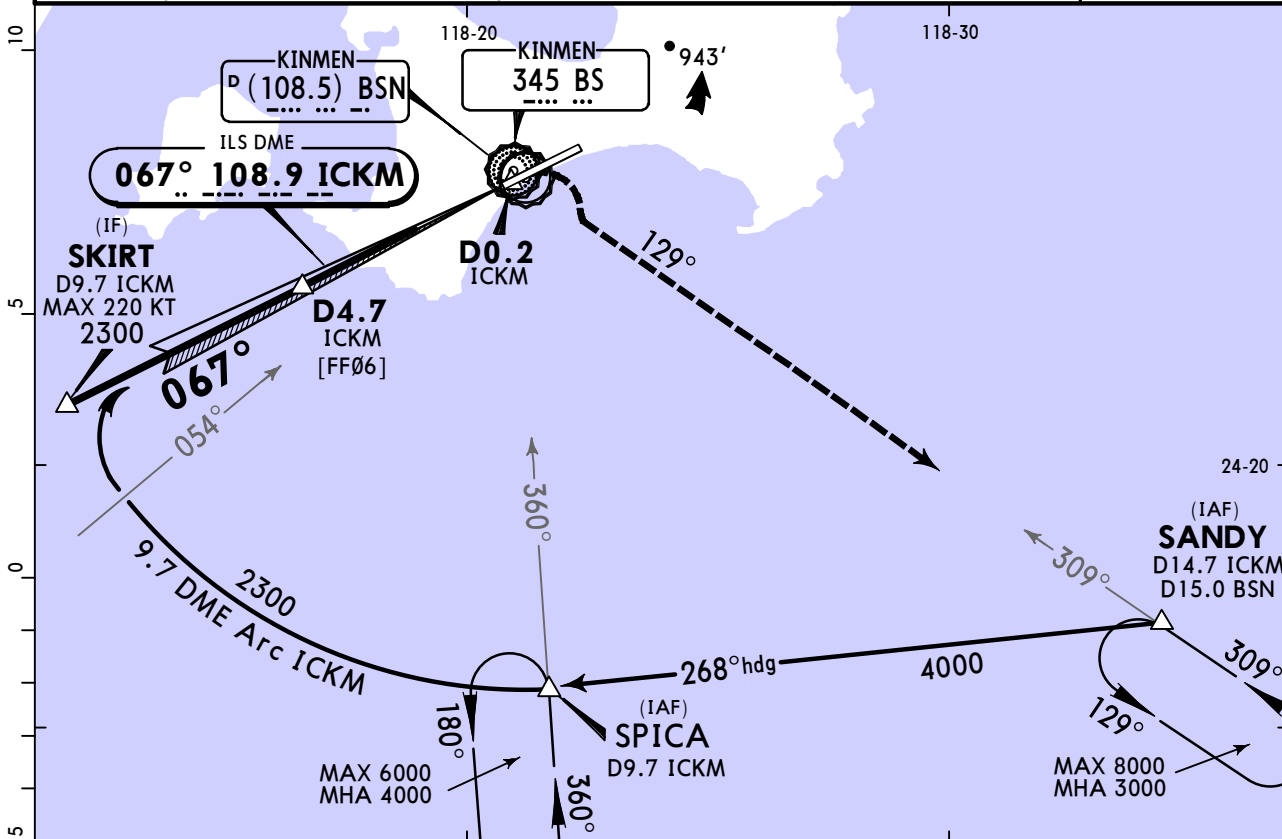
State		STRAIGHT-IN LANDING ILS				CIRCLE-TO-LAND	
		Missed apch climb gradient MIN 4.5% (274'/NM)		Missed apch climb gradient MIN 2.5% (152'/NM)		Not Authorized North of Runway	
DA(H)		A: 291' (246') C: 311' (266') B: 301' (256') D: 321' (276')		A: 444' (399') C: 464' (419') B: 454' (409') D: 474' (429')			
		FULL	RAIL or ALS out	FULL	RAIL or ALS out	Max Kts	MDA(H)
A	R750m V800m		R1200m	R/V1100m	V1800m	100	720' (664') V2100m
B			V1300m			135	980' (924') V2800m
C			R1400m	R/V1200m	V1900m	180	1220' (1164') V3700m
D			V1300m	R1200m V1300m	V2000m	205	1220' (1164') V4600m

RCBS/KNH
KINMEN

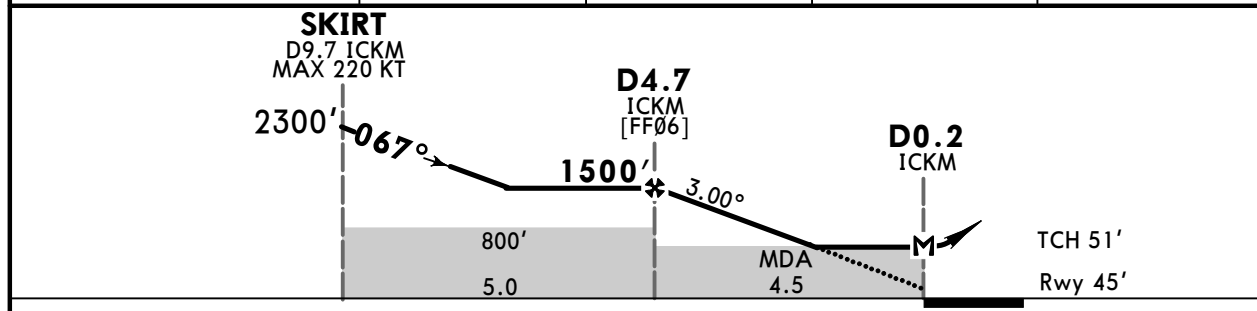
JEPPESSEN
14 OCT 22 (11-2)

KINMEN, TAIWAN
LOC Rwy 06

*ATIS 127.2		KAOHSIUNG Approach 124.6 133.1		*KINMEN Tower 118.0	*Ground 126.2
LOC ICKM 108.9	Final Apch Crs 067°	D4.7 ICKM 1500' (1455')	MDA(H) Refer to Minimums	Apt Elev 56' Rwy 45'	4800 MSA ARP
MISSED APCH: Climb RIGHT turn to track BS NDB 129° bearing to SANDY. Climb to 3000' and hold. Refer to minimums for missed apch climb gradients.					
Alt Set: hPa Rwy Elev: 2 hPa Trans level: FL130 Trans alt: 11000'				1. DME required. 2. ATS surveillance required.	



ICKM DME	4.0	3.0	2.0	1.0
ALTITUDE	1310'	990'	680'	360'



Gnd speed-Kts	70	90	100	120	140	160	SSALR PAPI	3000' RT	BS 345 129°	SANDY
Descent Angle 3.00°	372	478	531	637	743	849				
MAP at D0.2 ICKM										

PANS OPS	State STRAIGHT-IN LANDING			CIRCLE-TO-LAND	
	Missed apch climb gradient MIN 4.5% (274'/NM) MDA(H) 520' (475')		Missed apch climb gradient MIN 2.5% (152'/NM) MDA(H) 660' (615')		Not Authorized North of Runway
	RAIL or ALS out		RAIL or ALS out		Max Kts
A	R750m	V1600m	V1200m	V1800m	100
B	V800m	V1600m	V1200m	V1900m	135
C	V1500m	V2200m	V2100m	V2800m	180
D	V1500m	V2200m	V2100m	V2800m	205

RCBS/KNH

JEPPESSEN

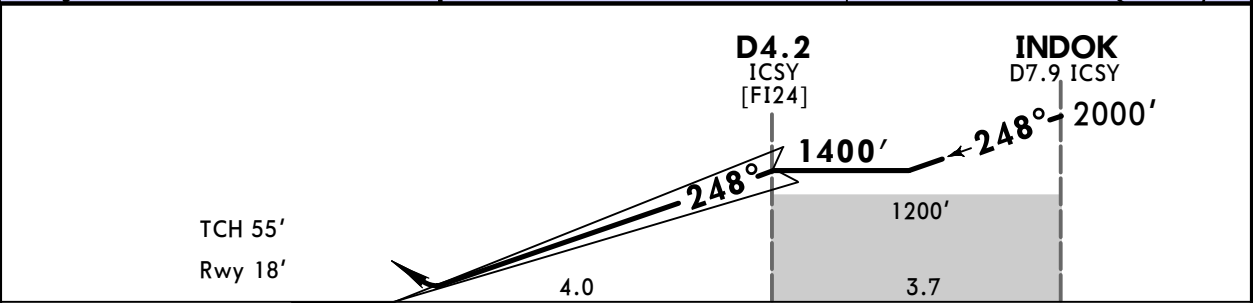
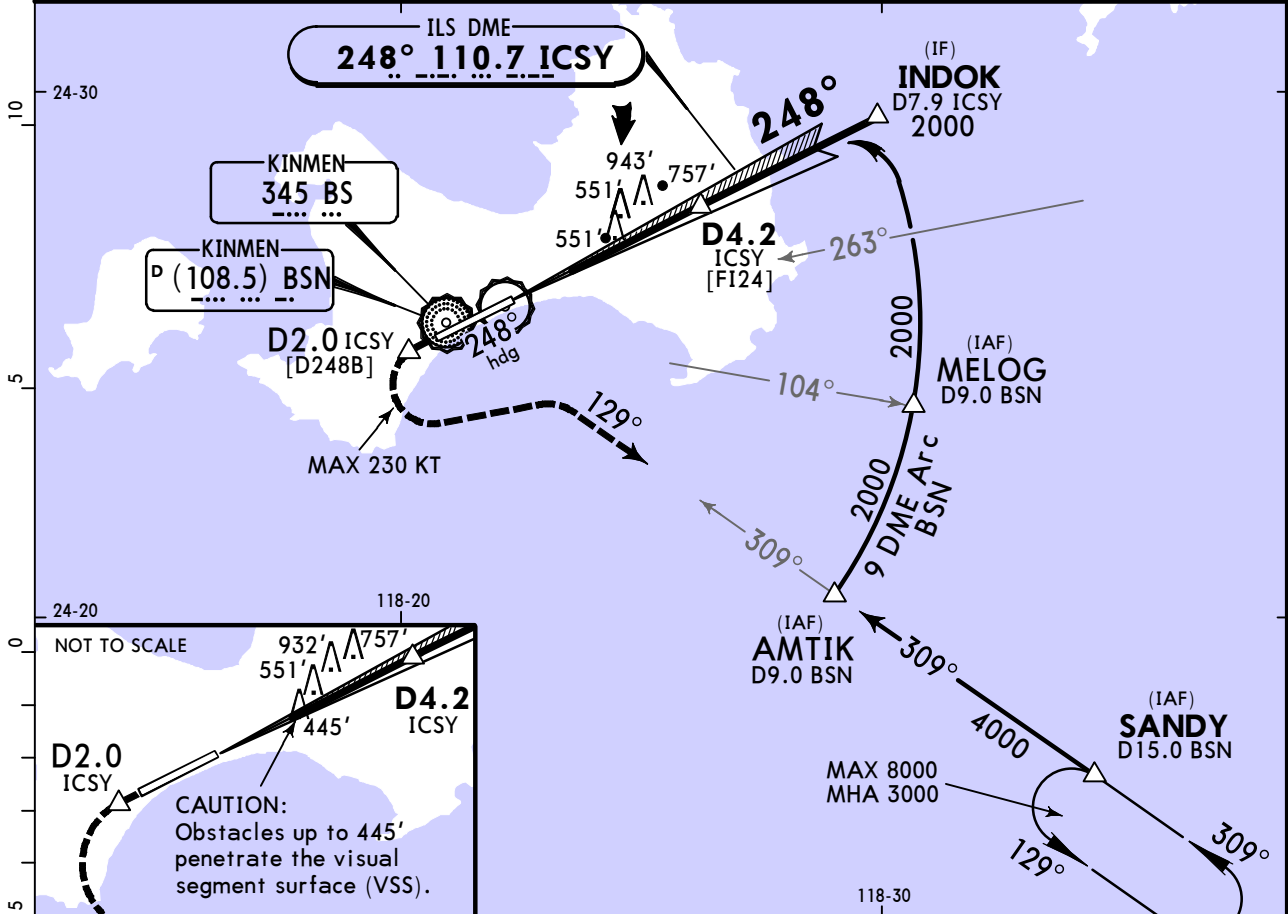
KINMEN, TAIWAN

KINMEN

14 OCT 22 (11-3)

ILS Rwy 24

*ATIS 127.2		KAOHSIUNG Approach 124.6 133.1		*KINMEN Tower 118.0		*Ground 126.2			
LOC ICSY 110.7	Final Apch Crs 248°	D4.2 ICSY 1400' (1382')		DA(H) Refer to Minimums	Apt Elev 56' Rwy 18'				
MISSED APCH: Climb on heading 248° until D2.0 ICSY, then LEFT turn to track BS NDB 129° bearing to SANDY, climb to 3000' and hold.									
Alt Set: hPa		Rwy Elev: 1 hPa		Trans level: FL130				Trans alt: 11000'	
1. DME required. 2. ATS surveillance required. 3. CAUTION: High terrain North of final approach course; Shi-mountain & a 445' antenna tower at 1.6 NM from Rwy 24 thr. 4. Pilot shall exercise CAUTION not to deviate out of TMA boundary. 5. Circling not authorized.									
MSA ARP									



Gnd speed-Kts	70	90	100	120	140	160	MALSF	↑ on 248° hdg	D2.0 ICSY
Gs	3.10°	384	494	548	658	768			

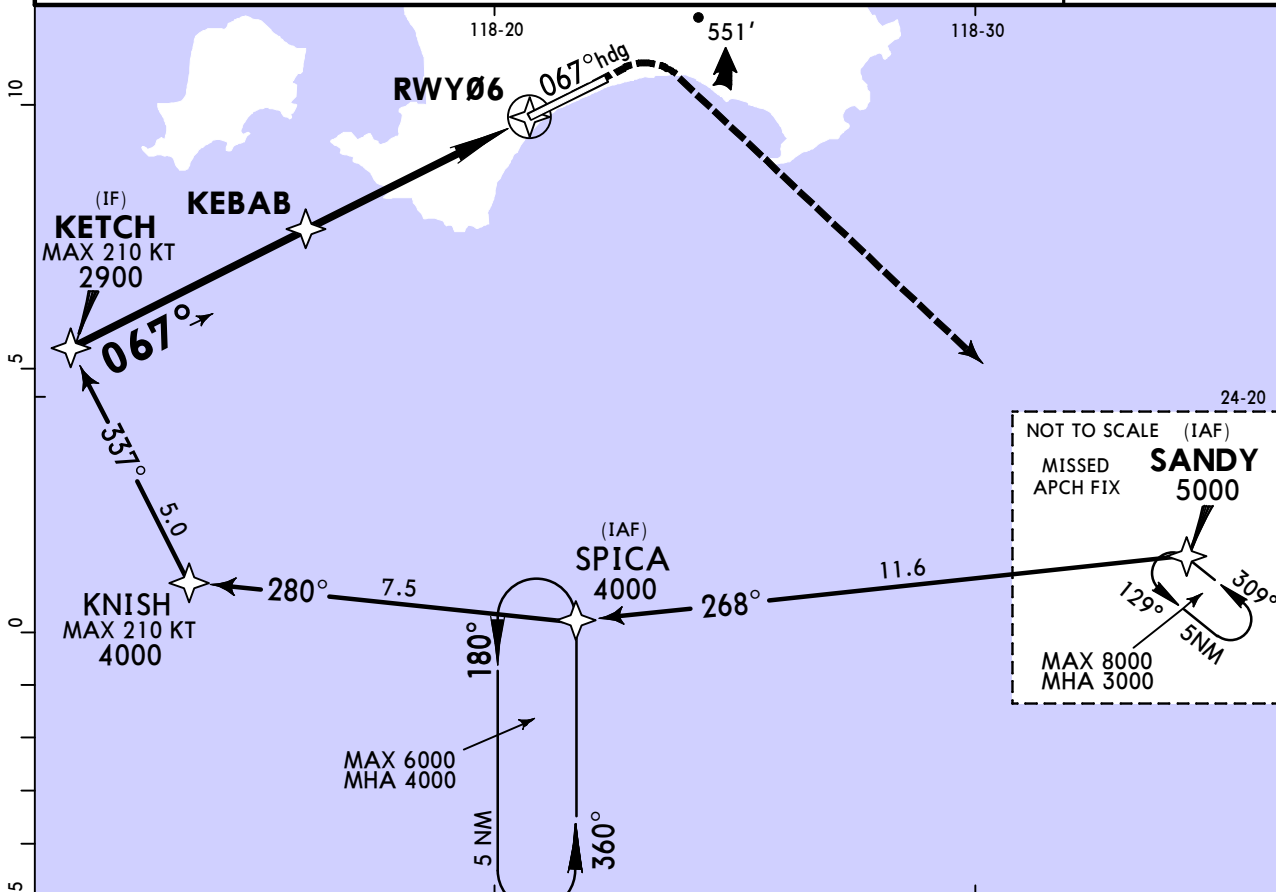
State		STRAIGHT-IN LANDING ILS	
DA(H) A: 576' (558') B: 588' (570') C: 597' (579') D: 607' (589')			
FULL		RAIL or ALS out	
A	V2100m	V2500m	
B	V2200m	V2600m	
C			
D	V2300m	V2700m	

RCBS/KNH
KINMEN

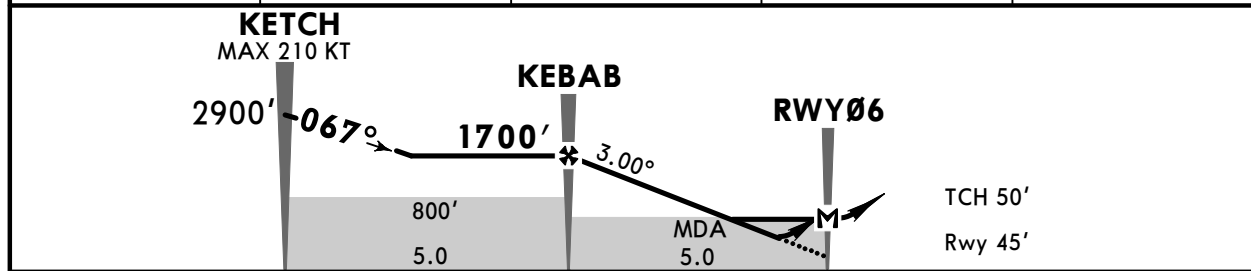
JEPPESEN
14 OCT 22 (12-1)

KINMEN, TAIWAN
RNP Rwy 06

*ATIS 127.2		KAOHSIUNG Approach 124.6 133.1		*KINMEN Tower 118.0		*Ground 126.2	
RNAV	Final Apch Crs 067°	KEBAB 1700'(1655')		LNAV/VNAV DA(H) Refer to Minimums		Apt Elev 56' Rwy 45'	
MISSED APCH: Climb on heading 067° until leaving 800', then turn RIGHT direct to SANDY. Climb to 3000' and hold.							4800 MSA ARP
RNP Apch Alt Set: hPa Rwy Elev: 2 hPa Trans level: FL130 Trans alt: 11000'							
1. DME/DME not authorized. 2. Baro-VNAV not authorized below 0°C.							



NM to RWY06	5.0	4.0	3.0	2.0
ALTITUDE	1700'	1370'	1060'	740'



Gnd speed-Kts	70	90	100	120	140	160	SSALR PAPI	800' on 067° hdg	3000' RT	SANDY
Glide Path Angle	3.00°	372	478	531	637	849				
MAP at RWY06										

State	STRAIGHT-IN LANDING				Max Kts	CIRCLE-TO-LAND	
	LNAV/VNAV		LNAV			Not Authorized North of Runway	
DA(H)	A: 500' (455')	C: 566' (521')	A: 570' (525')	C: 610' (565')	_____	_____	
	B: 520' (475')	D: 589' (544')	B: 590' (545')	D: 630' (585')		_____	
	RAIL or ALS out		RAIL or ALS out		_____		
A	R/V1400m	V2100m	R/V1400m	V2100m	100	720' (664')	V2100m
B	R/V1500m	V2200m	R/V1500m	V2200m	135	980' (924')	V2800m
C	V1700m	V2400m	V1800m	V2500m	180	1220' (1164')	V3700m
D	V1800m	V2500m	V1900m	V2600m	205	1220' (1164')	V4600m

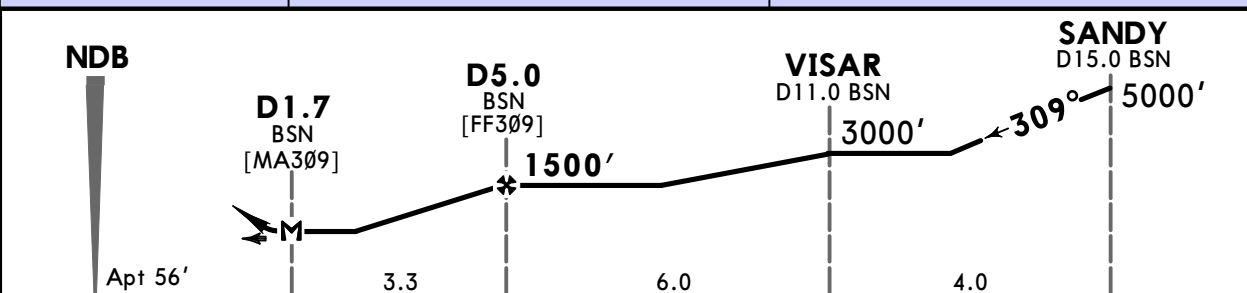
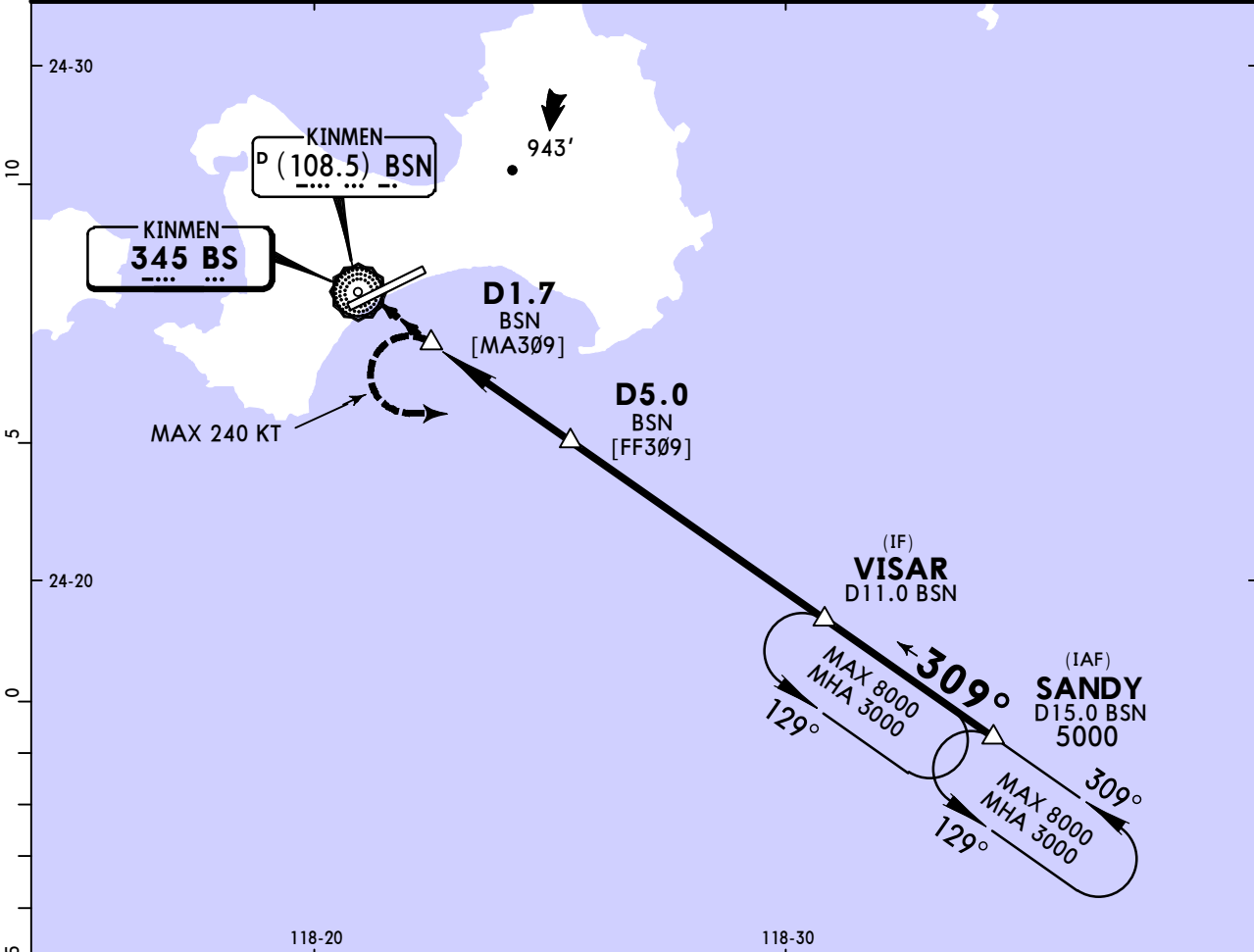
CHANGES: None.

RCBS/KNH
KINMEN

JEPPESEN
14 OCT 22 (16-1)

KINMEN, TAIWAN
NDB-D

BRIEFING STRIP™	*ATIS 127.2		KAOHSIUNG Approach 124.6 133.1		*KINMEN Tower 118.0		*Ground 126.2	
	NDB BS 345	Final Apch Crs 309°	D5.0 BSN 1500' (1444')		MDA(H) Refer to Minimums	Apt Elev 56'		<div style="border: 1px solid black; border-radius: 50%; width: 100px; height: 100px; margin: 0 auto; display: flex; align-items: center; justify-content: center;"> 4800 </div> MSA ARP
	MISSED APCH: Climb LEFT turn to track BS NDB 129° bearing to SANDY. Climb to 3000' and hold.							
	Alt Set: hPa		Apt Elev: 2 hPa		Trans level: FL130		Trans alt: 11000'	
DME required.								



						Lighting - Refer to Airport Chart	3000'	BS 345	SANDY
						LT	129°		

State CIRCLE-TO-LAND

Not Authorized North of Runway

PANS OPS	Max Kts	MDA(H)	
	A	100	720' (664')
B	135	980' (924')	V2800m
C	180	1220' (1164')	V3700m
D	205	1220' (1164')	V4600m

Chart changes since cycle 15-2023

ADD = added chart, REV = revised chart, DEL = deleted chart.

ACT	PROCEDURE IDENT	INDEX	REV DATE	EFF DATE
-----	-----------------	-------	----------	----------

KINMEN, (KINMEN - RCBS)

TERMINAL CHART CHANGE NOTICES

Chart Change Notices for Airport RCBS

Type: Terminal

Effectivity: Permanent

Begin Date: Immediately

End Date: No end date

RWY 24 MALSF length changed from 480m to 420m.