

List of pages in this Trip Kit

Trip Kit Index

Airport Information For RCCM

Terminal Charts For RCCM

Revision Letter For Cycle 16-2023

Change Notices

Notebook

General Information

Location: QIMEI TWN
ICAO/IATA: RCCM / CMJ
Lat/Long: N23° 12.78', E119° 25.05'
Elevation: 63 ft

Airport Use: Public
Daylight Savings: Not Observed
UTC Conversion: -8:00 = UTC
Magnetic Variation: 4.0° W

Customs: No
Airport Type: VFR
Landing Fee: No
Control Tower: Yes
Jet Start Unit: No
LLWS Alert: No
Beacon: Yes

Sunrise: 2150 Z
Sunset: 1002 Z

Runway Information

Runway: 02
Length x Width: 2569 ft x 75 ft
Surface Type: concrete
TDZ-Elev: 53 ft
Lighting: Edge, REIL

Runway: 20
Length x Width: 2569 ft x 75 ft
Surface Type: concrete
TDZ-Elev: 49 ft
Lighting: Edge, REIL

Communication Information

Qimei Tower: 118.100
Kaohsiung Approach: 128.100
Kaohsiung Approach: 129.900

RCCM/CMJ
QIMEI

JEPPESEN

QIMEI, TAIWAN

19 MAR 21

10-2

Eff 25 Mar

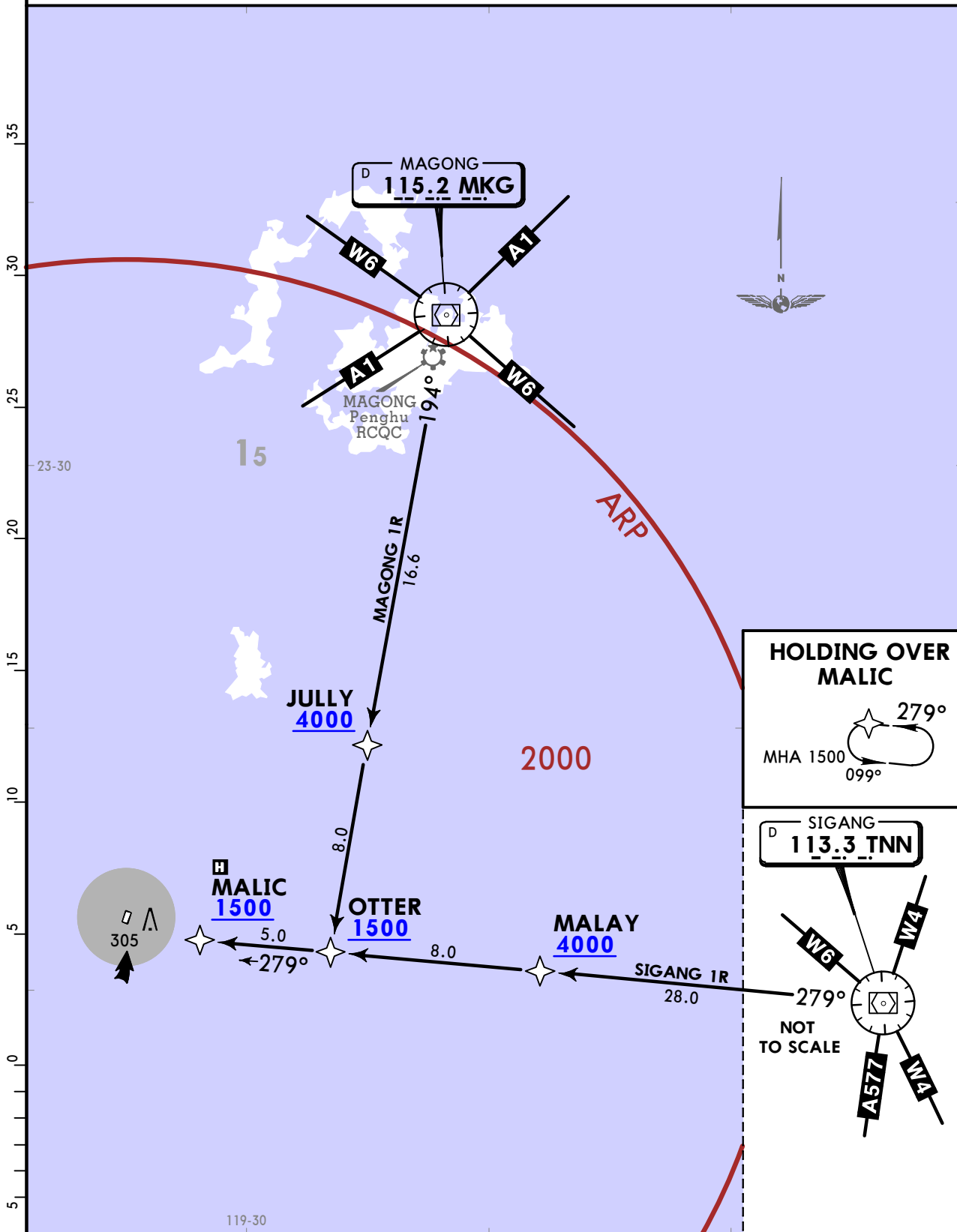
RNAV STAR

Apt Elev
63

Alt Set: hPa Trans level: FL130

1. RNAV-1.
2. RADAR monitoring required.
3. If unable to MAINTAIN VFR before MALIC, MAINTAIN 1500 and hold at MALIC.
4. Critical DME & DME gap not surveyed.

MAGONG 1R (MA1R)
SIGANG 1R (SA1R)
RNAV ARRIVALS



STAR	ROUTING
MAGONG 1R	From MKG VOR to JULY, OTTER, then MALIC.
SIGANG 1R	From TNN VOR to MALAY, OTTER, then MALIC.

CHANGES: Chart reindexed, new format.

RCCM/CMJ
QIMEI

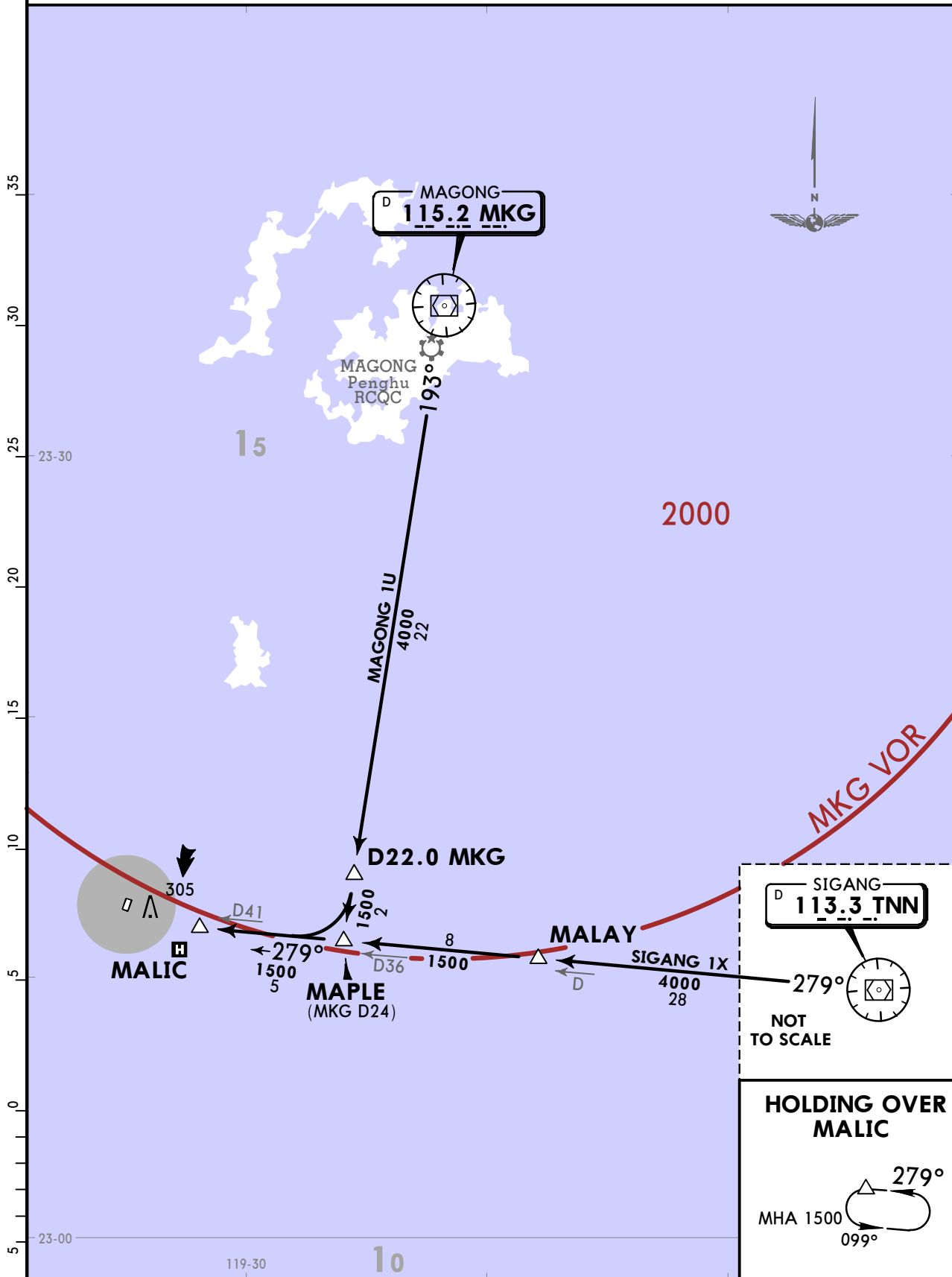
JEPPESEN
19 MAR 21 10-2A Eff 25 Mar

QIMEI, TAIWAN
STAR

Apt Elev
63

Alt Set: hPa Trans level: FL130
If unable to MAINTAIN VFR before MALIC, MAINTAIN 1500 and hold at MALIC.

MAGONG 1U (MKG 1U) SIGANG 1X (TNN 1X) ARRIVALS



STAR	ROUTING
MAGONG 1U	Depart MKG VOR, proceed via MKG R193 to MAPLE then MALIC.
SIGANG 1X	Depart TNN VOR, proceed via TNN R279 to MALAY then MALIC.

RCCM/CMJ

Apt Elev 63'
N23 12.8 E119 25.1

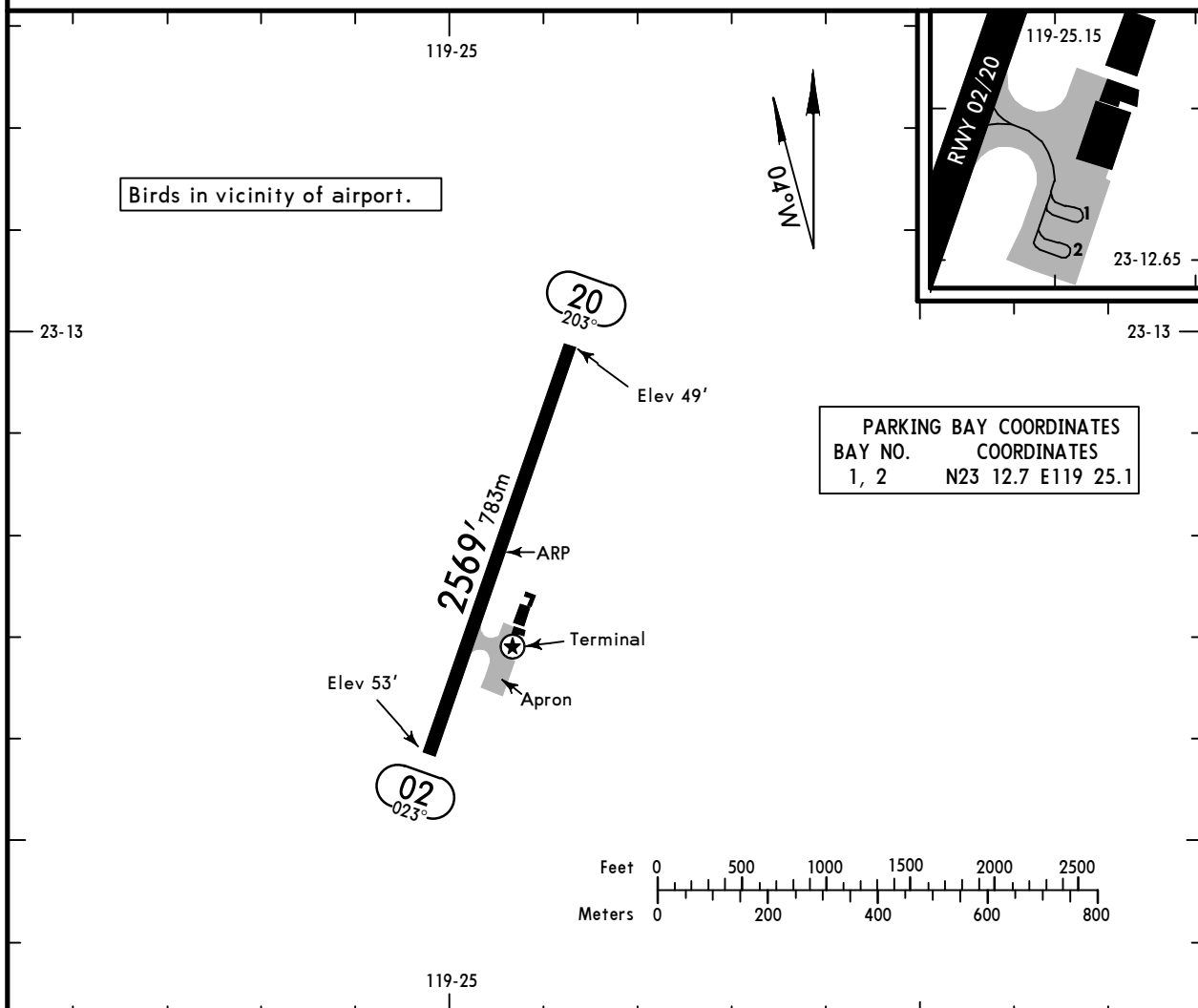
JEPPESSEN

21 JAN 22 (10-9)

QIMEI, TAIWAN

QIMEI

*QIMEI Tower 118.1



PARKING BAY COORDINATES	
BAY NO.	COORDINATES
1, 2	N23 12.7 E119 25.1

ADDITIONAL RUNWAY INFORMATION

RWY	USABLE LENGTHS	LANDING BEYOND	TAKE-OFF	WIDTH
02 20	HIRL (60m) REIL APAPI-L (angle 3.0°)			75' 23m

Std TAKE-OFF			
RL & RCLM	RL	RL or RCLM	Adequate Vis Ref
DAY	NIGHT	DAY	DAY NIGHT
R300m		R400m	R/V500m NA

Chart changes since cycle 15-2023

ADD = added chart, REV = revised chart, DEL = deleted chart.

ACT	PROCEDURE IDENT	INDEX	REV DATE	EFF DATE
-----	-----------------	-------	----------	----------

QIMEI, (QIMEI - RCCM)

TERMINAL CHART CHANGE NOTICES

No Chart Change Notices for Airport RCCM