

List of pages in this Trip Kit

Trip Kit Index

Airport Information For RCDC

Terminal Charts For RCDC

Revision Letter For Cycle 16-2023

Change Notices

Notebook

General Information

Location: PINGTUNG TWN
ICAO: RCDC
Lat/Long: N22° 40.33', E120° 27.67'
Elevation: 81 ft

Airport Use: Military
Daylight Savings: Not Observed
UTC Conversion: -8:00 = UTC
Magnetic Variation: 4.0° W

Customs: No
Airport Type: IFR
Landing Fee: No
Control Tower: Yes
Jet Start Unit: No
LLWS Alert: No
Beacon: Yes

Sunrise: 2146 Z
Sunset: 0958 Z

Runway Information

Runway: 09
Length x Width: 7828 ft x 148 ft
Surface Type: concrete
TDZ-Elev: 76 ft
Lighting: Edge, ALS

Runway: 27
Length x Width: 7828 ft x 148 ft
Surface Type: concrete
TDZ-Elev: 78 ft
Lighting: Edge, ALS

Communication Information

Pingtung South Tower: 31.540
Pingtung South Tower: 27.580
Pingtung South Tower: 126.180
Pingtung South Tower: 23.660
Kaohsiung Approach: 121.100
Kaohsiung Approach: 124.700
Taipei ACC: 126.700 RCO

RCDC/PIF
PINGTUNG SOUTH

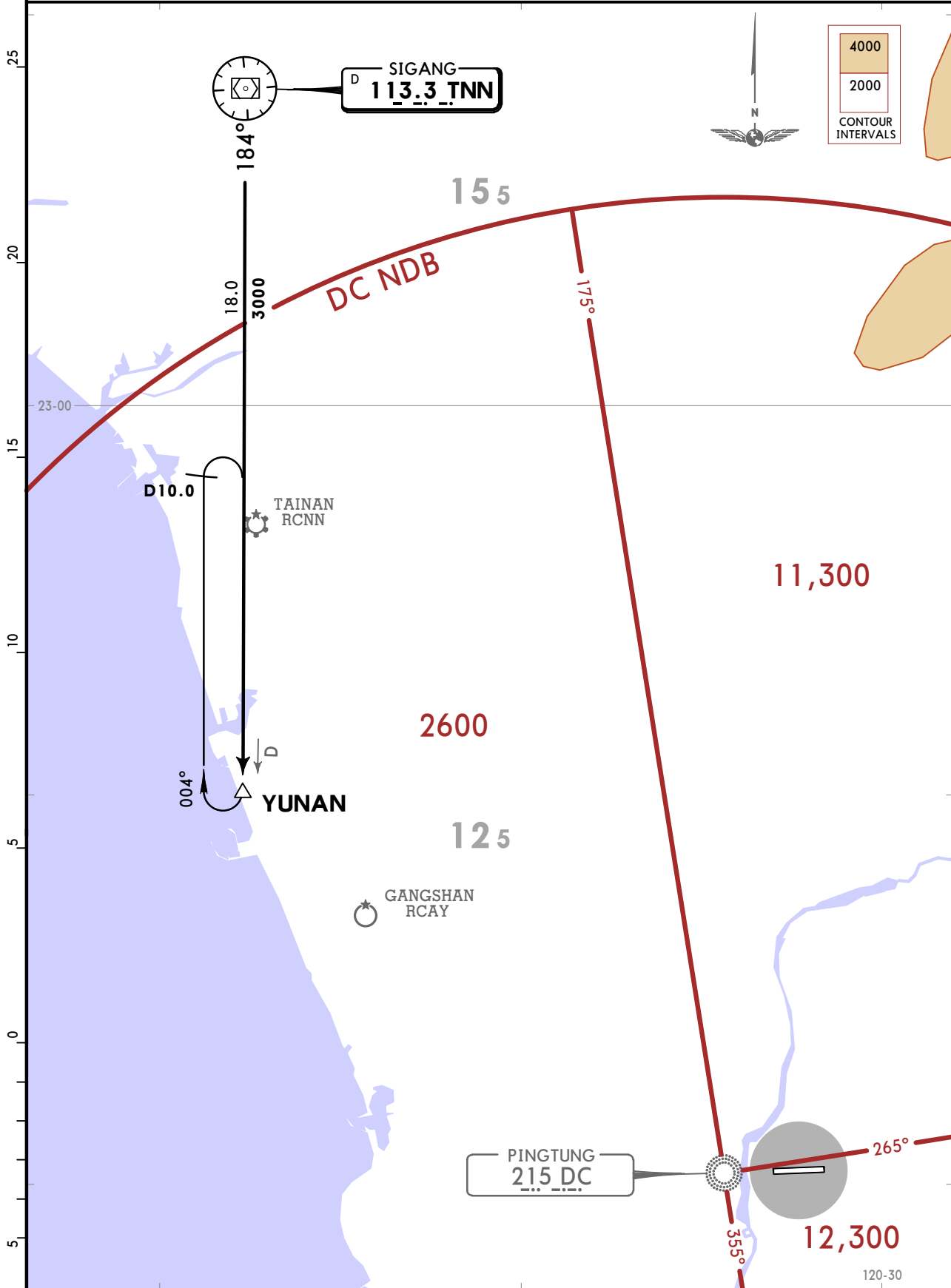
JEPPESEN
23 JUL 21 (10-2)

PINGTUNG, TAIWAN
STAR

Apt Elev
81

Alt Set: hPa Trans level: FL130
Procedure designed and maintained by ROCAF.

SIGANG ARRIVAL
[TNN]
(RWY 09)



ROUTING
Track TNN R-184 to YUNAN.

CHANGES: DC NDB renamed.

RCDC/PIF
PINGTUNG SOUTH

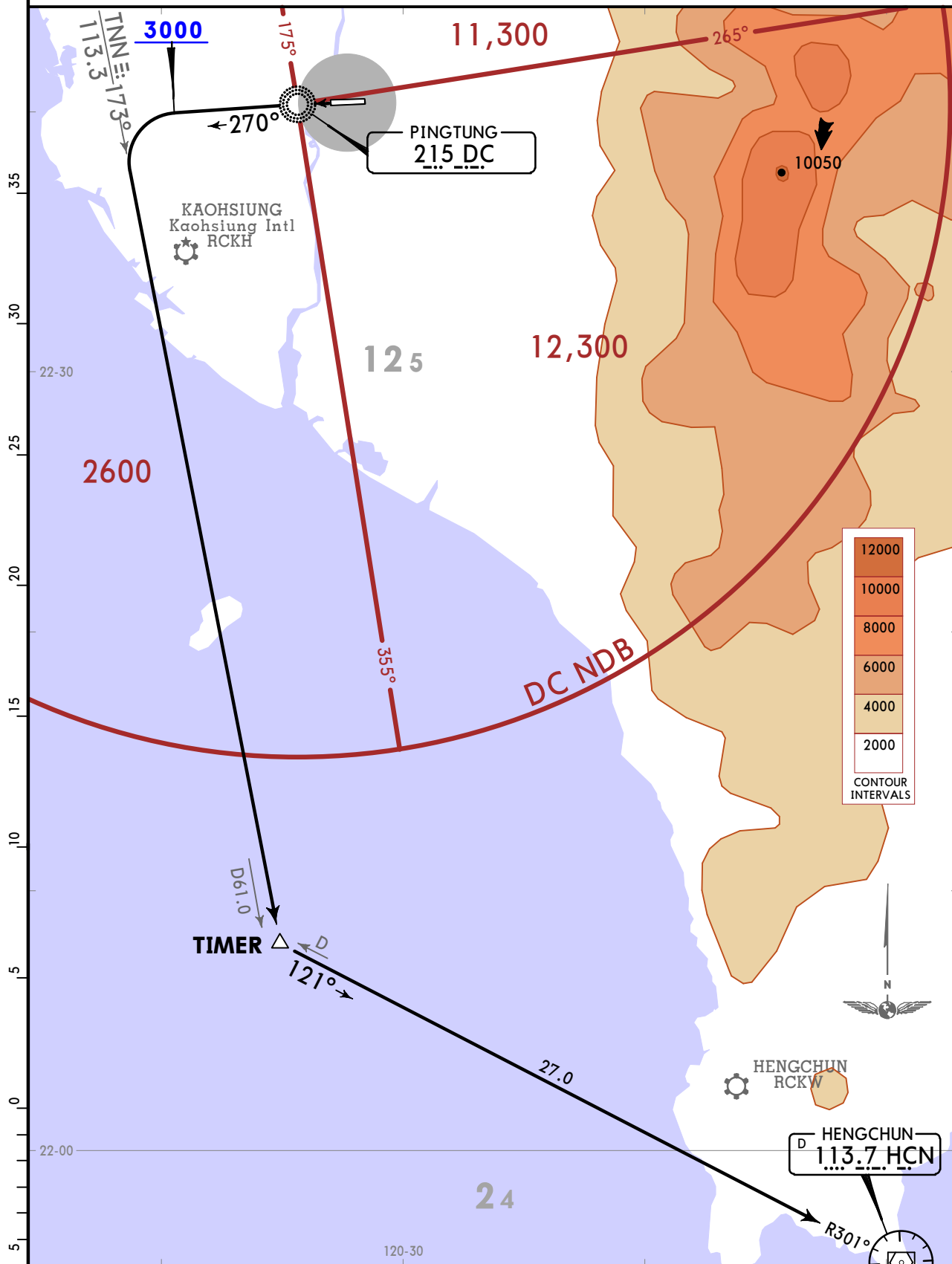
JEPPESEN
23 JUL 21 **10-3**

PINGTUNG, TAIWAN
SID

Apt Elev
81

Trans alt: 11000
1. Procedure designed and maintained by ROCAF.
2. CAUTION: High terrain beginning at 9 NM EAST of aerodrome.

KENTING 2B DEPARTURE
[KT2B]
(RWY 27)



INITIAL CLIMB

MAINTAIN runway heading to DC NDB. Track DC NDB 270° bearing to 3000. Turn LEFT intercept TNN R-173 to TIMER. Turn LEFT intercept HCN R-301 inbound to HCN VOR to join airway, MAINTAIN ATC assigned altitude.

CHANGES: DC NDB renamed.

© JEPPESEN, 2020, 2021. ALL RIGHTS RESERVED.

RCDC/PIF
PINGTUNG SOUTH

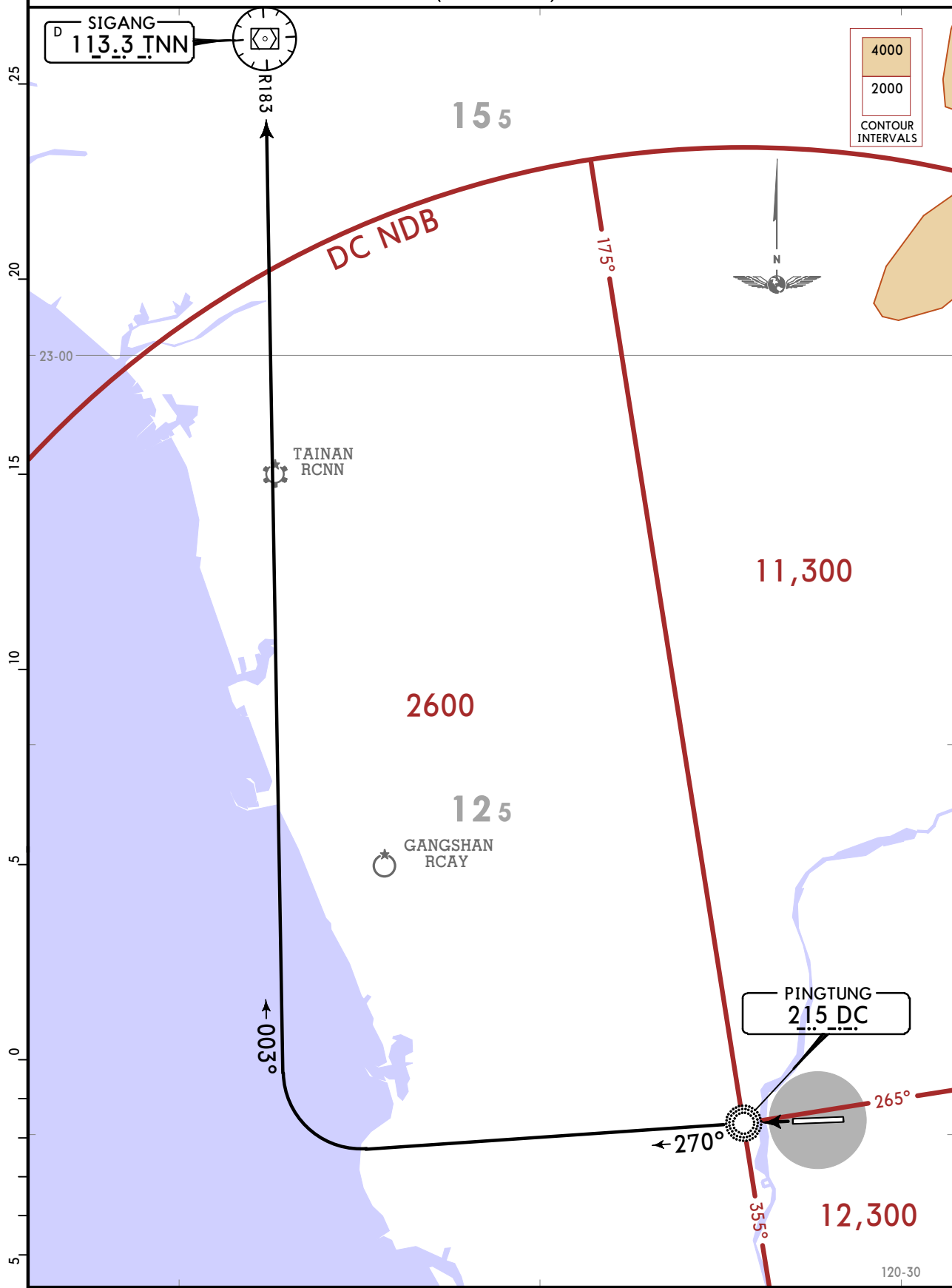
JEPPESEN
23 JUL 21 (10-3A)

PINGTUNG, TAIWAN
SID

Apt Elev
81

Trans alt: 11000
1. Procedure designed and maintained by ROCAF.
2. CAUTION: High terrain beginning at 9 NM EAST of aerodrome.

PINGTUNG 2B DEPARTURE
[PT2B]
(RWY 27)



SIGANG
113.3 TNN

4000
2000
CONTOUR
INTERVALS



23-00

TAINAN
RCNN

2600

11,300

125

GANGSHAN
RCAY

PINGTUNG
215 DC

12,300

120-30

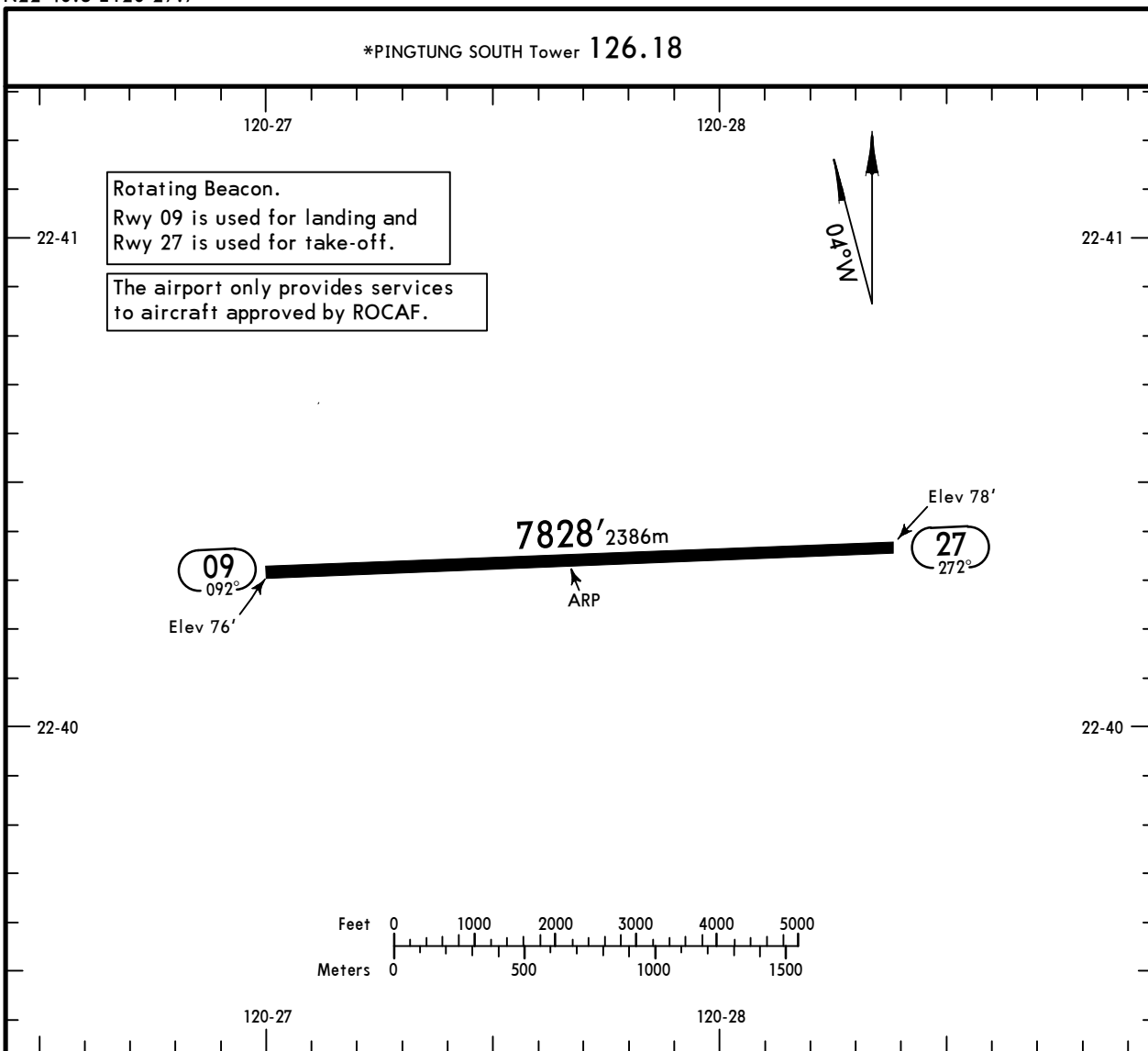
INITIAL CLIMB

MAINTAIN runway heading to DC NDB. Track DC NDB 270° (bearing from DC NDB). Turn RIGHT intercept TNN R-183 inbound to TNN VOR to join airway, MAINTAIN ATC assigned altitude.

RCDC/PIF
 Apt Elev **81'**
 N22 40.3 E120 27.7

JEPPESEN
 29 MAY 20 **(10-9)**

PINGTUNG, TAIWAN
PINGTUNG SOUTH



ADDITIONAL RUNWAY INFORMATION					
RWY	ALS	LANDING BEYOND	USABLE LENGTHS		WIDTH
			Threshold	Glide Slope	
09 27	RL ALS		6802'	2073m	148' 45m

TAKE-OFF	
AIR CARRIER (JAA)	
LVP must be in Force All Rwys RCLM (DAY only) or RL	All Rwys RCLM (DAY only) or RL
250m	400m
300m	

RCDC/PIF

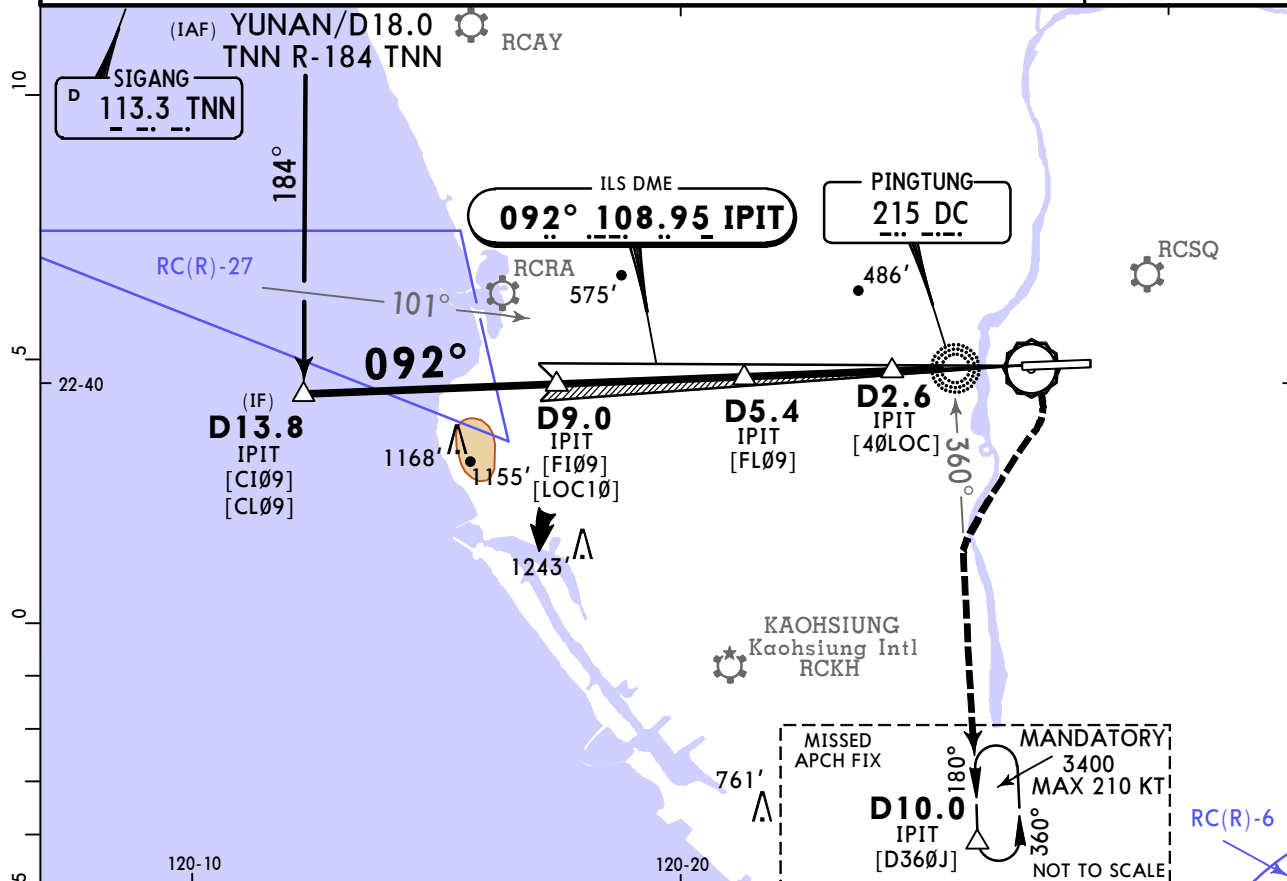
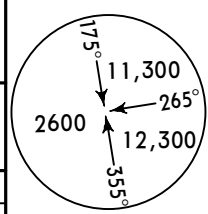
PINGTUNG SOUTH

JEPPESEN
23 JUL 21 (11-1)

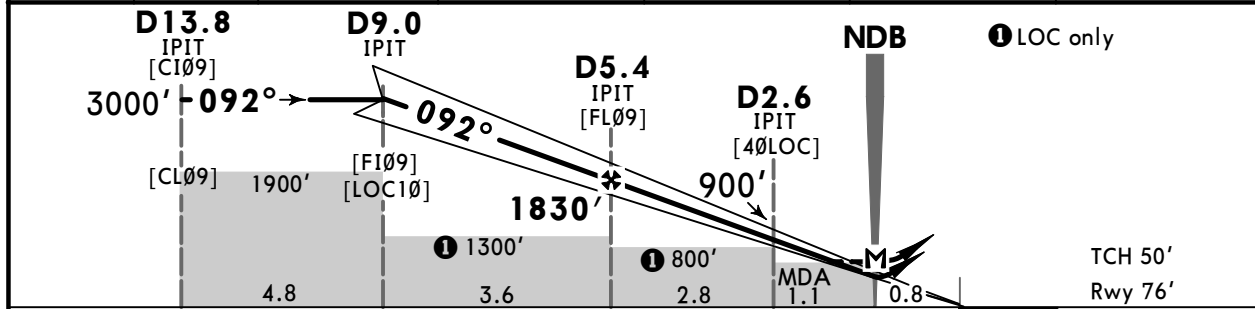
PINGTUNG, TAIWAN

ILS or LOC Rwy 09

KAOHSIUNG Approach (R)			*PINGTUNG SOUTH Tower		
121.1		124.7		126.18	
LOC IPIT	Final Apch Crs	D5.4 IPIT	ILS DA(H)	Apt Elev 81' Rwy 76'	
108.95	092°	1830' (1754')	276' (200')		
MISSED APCH: Climb to 700' then climbing RIGHT turn to 3400' on track 180° from DC NDB, hold D10.0 IPIT. MAX 185 KT.					
Alt Set: hPa		Rwy Elev: 3 hPa	Trans level: FL 130	Trans alt: 11000'	
1. Procedure designed and maintained by ROCAF. 2. DME required. 3. High terrain beginning at 9 NM east of the aerodrome. 4. The circling approach is prohibited.					
					MSA DC NDB



LOC (GS out)	IPIT DME	5.0	4.0	3.0	2.0	1.5
	ALTITUDE	1690'	1360'	1040'	710'	560'



Gnd speed-Kts	70	90	100	120	140	160	ALS	700'	3400'	180° from DC 215	D10.0 IPIT	
ILS GS or LOC Descent Angle	3.00°	372	478	531	637	743						849
MAP at DC NDB												

Timing not authorized for defining the MAP.

Military						STRAIGHT-IN LANDING RWY 09					
ILS						LOC (GS out)					
DA(H) 276' (200')						MDA(H) 560' (484')					
FULL			ALS out			ALS out			ALS out		
A											
B	1200m					2300m					
C											
D											

RCDC/PIF



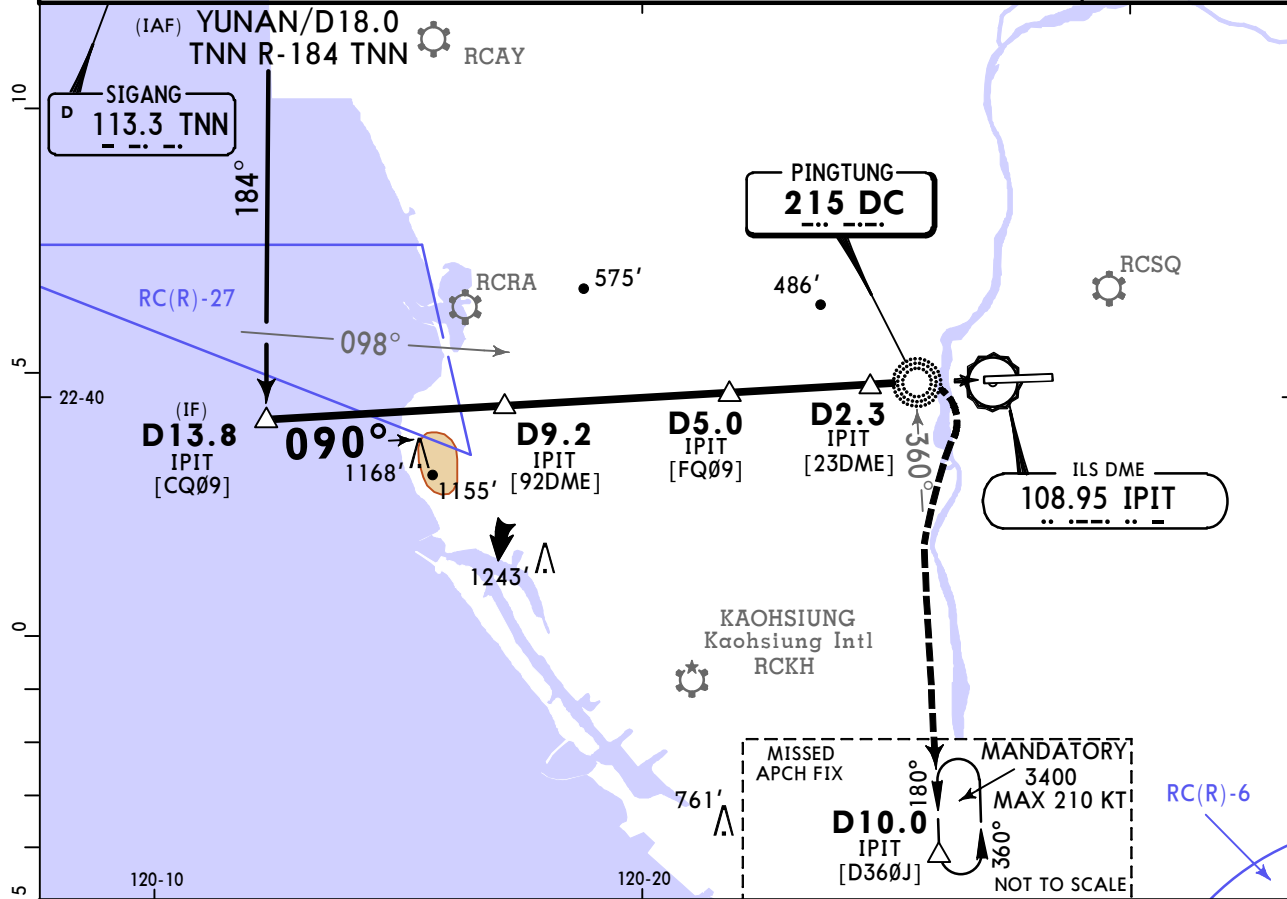
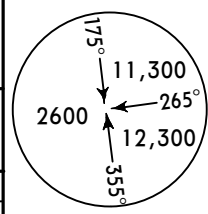
PINGTUNG, TAIWAN

PINGTUNG SOUTH

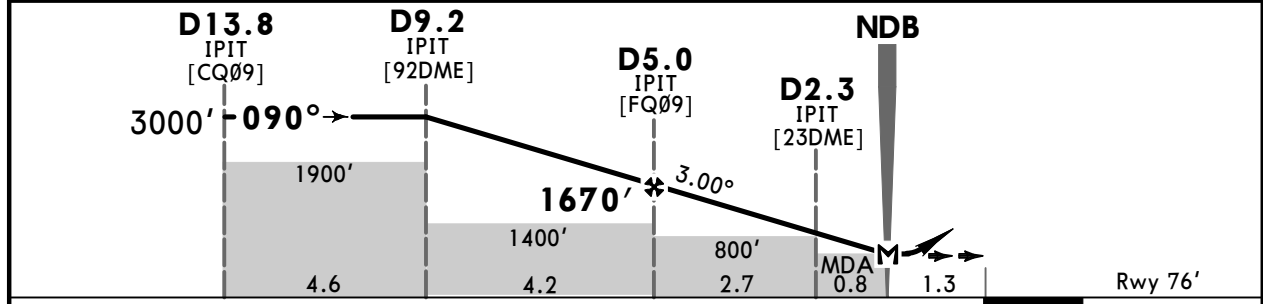
23 JUL 21 (16-1)

NDB Rwy 09

KAOHSIUNG Approach (R)				*PINGTUNG SOUTH Tower	
121.1		124.7		126.18	
NDB DC	Final Apch Crs	D5.0 IPIT	MDA(H)	Apt Elev 81' Rwy 76'	
215	090°	1670' (1594')	580' (504')		
MISSED APCH: Turn RIGHT, track 180° from DC NDB, hold D10.0 IPIT DME at MANDATORY 3400'. MAX 210 KT.					
Alt Set: hPa		Rwy Elev: 3 hPa		Trans level: FL 130	
				Trans alt: 11000'	
1. Procedure designed and maintained by ROCAF. 2. DME required. 3. High terrain beginning at 9 NM east of the aerodrome. 4. The circling approach is prohibited.					
					MSA DC NDB



IPIT DME	5.0	4.0	3.0	2.0	1.6
ALTITUDE	1670'	1350'	1030'	710'	580'



Gnd speed-Kts	70	90	100	120	140	160				
Descent Angle 3.00°	372	478	531	637	743	849				
MAP at NDB										
							ALS	MANDATORY 3400'	180° from DC	D10.0 IPIT
								RT	215	

Military STRAIGHT-IN LANDING RWY 09										
MDA(H) 580' (504')										
ALS out										
A										
B										
C	2300m									
D										

Chart changes since cycle 15-2023

ADD = added chart, REV = revised chart, DEL = deleted chart.

ACT	PROCEDURE IDENT	INDEX	REV DATE	EFF DATE
PINGTUNG, (PINGTUNG SOUTH - RCDC)				

TERMINAL CHART CHANGE NOTICES

No Chart Change Notices for Airport RCDC