

## List of pages in this Trip Kit

Trip Kit Index

Airport Information For RCFN

Terminal Charts For RCFN

Revision Letter For Cycle 16-2023

Change Notices

Notebook

## General Information

Location: TAITUNG TWN  
ICAO/IATA: RCFN / TTT  
Lat/Long: N22° 45.32', E121° 06.02'  
Elevation: 143 ft

Airport Use: Public  
Daylight Savings: Not Observed  
UTC Conversion: -8:00 = UTC  
Magnetic Variation: 4.0° W

Fuel Types: Jet A-1  
Repair Types: Minor Airframe  
Customs: Yes  
Airport Type: IFR  
Landing Fee: No  
Control Tower: Yes  
Jet Start Unit: No  
LLWS Alert: No  
Beacon: Yes

Sunrise: 2144 Z  
Sunset: 0955 Z

## Runway Information

Runway: 04  
Length x Width: 7999 ft x 148 ft  
Surface Type: concrete  
TDZ-Elev: 143 ft  
Lighting: Edge, ALS

Runway: 22  
Length x Width: 7999 ft x 148 ft  
Surface Type: concrete  
TDZ-Elev: 130 ft  
Lighting: Edge, ALS, REIL

## Communication Information

ATIS: 127.000  
Fongnian Tower: 118.100  
Fongnian Ground: 121.900  
Kaohsiung Approach: 119.400  
Kaohsiung Approach: 123.100



RCFN/TTT  
FONGNIAN

JEPPESEN

TAITUNG, TAIWAN

1 OCT 21

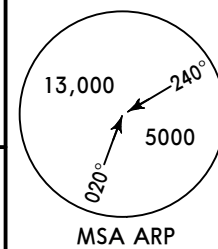
10-3

Eff 7 Oct

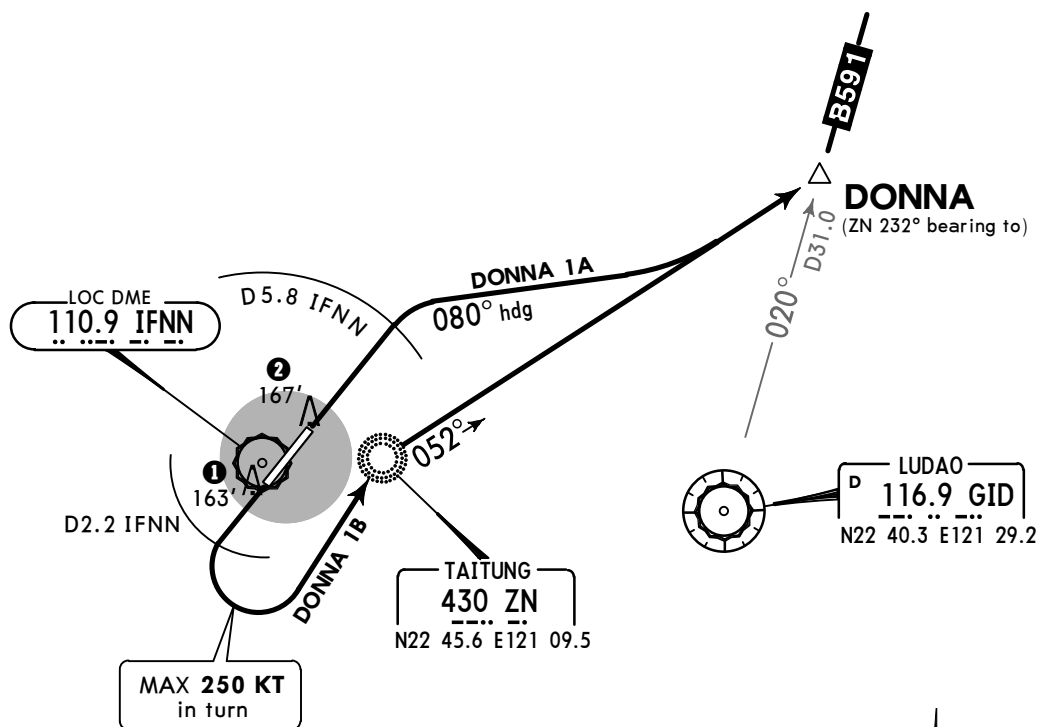
SID

Apt Elev  
143'

Trans level: FL130 Trans alt: 11000'  
High terrain around the airport.



**DONNA 1A [DONA1A]**  
**DONNA 1B [DONA1B]**  
**DEPARTURES**  
**(ALL RWYS)**



CAUTION: (CIO) Close-in obstacles (trees and poles):

- ① 163' MSL, 69m SOUTH of RWY 04 THR.
- ② 167' MSL, 96m NORTHEAST of RWY 22 THR.

These SIDs require minimum climb gradients of:  
DONNA 1A: 6.6% (400' per NM) until established on the 052° bearing from ZN NDB.  
DONNA 1B: 6.3% (383' per NM) until ZN NDB.

Gnd speed-KT	75	100	150	200	250	300
6.3% V/V (fpm)	478	638	957	1276	1595	1914
6.6% V/V (fpm)	501	668	1003	1337	1671	2005

SID	RWY	INITIAL CLIMB
DONNA 1A	04	Depart runway heading until D5.8 IFNN, then turn RIGHT heading 080° to track 052° bearing from ZN NDB to DONNA to join B-591.
DONNA 1B	22	Depart runway heading until D2.2 IFNN, then turn LEFT direct to ZN NDB. Then track 052° bearing from ZN NDB to DONNA to join B-591.

RCFN/TTT  
FONGNIAN

JEPPESEN

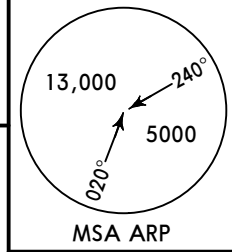
TAITUNG, TAIWAN

1 OCT 21 (10-3A) Eff 7 Oct

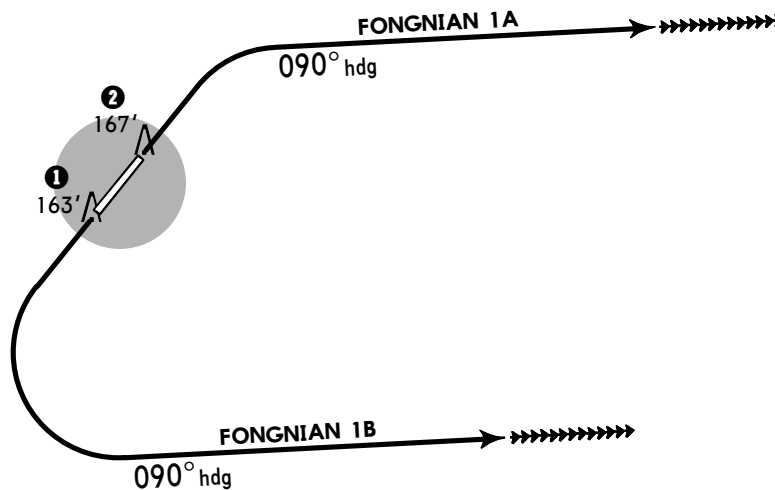
SID

Apt Elev  
143'

Trans level: FL130 Trans alt: 11000'.  
 1. High terrain around the airport.  
 2. No turn before DER.  
 3. Valid only during GID VOR/DME and GI NDB are both out.



FONGNIAN 1A [FONG1A]  
 FONGNIAN 1B [FONG1B]  
 RADAR DEPARTURES  
 (ALL RWYS)



CAUTION: (CIO) Close-in obstacles (trees and poles):

- ① 163' MSL, 69m SOUTH of RWY 04 THR.
- ② 167' MSL, 96m NORTHEAST of RWY 22 THR.

These SIDs require a minimum climb gradient of:  
 6.6% (400' per NM) until 1000'.



Gnd speed-KT	75	100	150	200	250	300
6.6% V/V (fpm)	501	668	1003	1337	1671	2005

SID	RWY	INITIAL CLIMB
FONGNIAN 1A	04	After departure, turn RIGHT heading 090° climbing to ATC assigned altitude for RADAR vectoring.
FONGNIAN 1B	22	After departure, turn LEFT heading 090° climbing to ATC assigned altitude for RADAR vectoring.

RCFN/TTT  
FONGNIAN

JEPPESEN

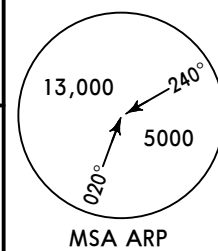
TAITUNG, TAIWAN

1 OCT 21 (10-3B) Eff 7 Oct

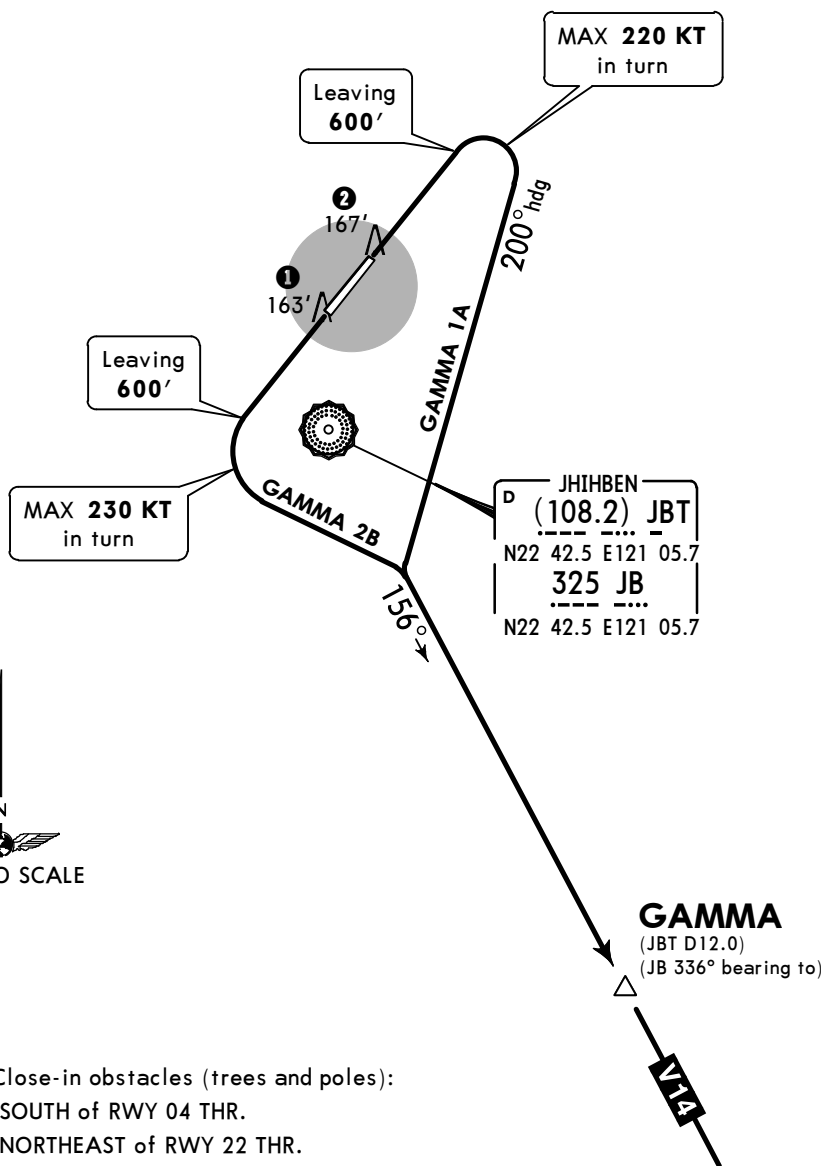
SID

Apt Elev  
143'

Trans level: FL130 Trans alt: 11000'  
High terrain around the airport.



GAMMA 1A [GAMA1A]  
GAMMA 2B [GAMA2B]  
DEPARTURES  
(ALL RWYS)



CAUTION: (CIO) Close-in obstacles (trees and poles):

- ① 163' MSL, 69m SOUTH of RWY 04 THR.
- ② 167' MSL, 96m NORTHEAST of RWY 22 THR.

These SIDs require minimum climb gradients of:  
GAMMA 1A: 5.0% (304' per NM) until 600'.  
GAMMA 2B: 3.5% (213' per NM) until established on the 156° bearing from JB NDB.

Gnd speed-KT	75	100	150	200	250	300
3.5% V/V (fpm)	266	354	532	709	886	1063
5.0% V/V (fpm)	380	506	760	1013	1266	1519

SID	RWY	INITIAL CLIMB
GAMMA 1A	04	Depart runway heading until 600', turn RIGHT heading 200° to track 156° bearing from JB NDB to GAMMA to join V14 transition.
GAMMA 2B	22	Depart runway heading until 600', turn LEFT to track 156° bearing from JB NDB to GAMMA to join V14 transition.

RCFN/TTT  
FONGNIAN

JEPPESEN

TAITUNG, TAIWAN

1 OCT 21

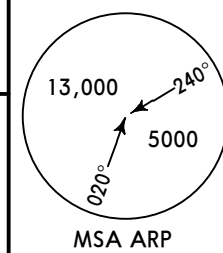
10-3C

Eff 7 Oct

SID

Apt Elev  
143'

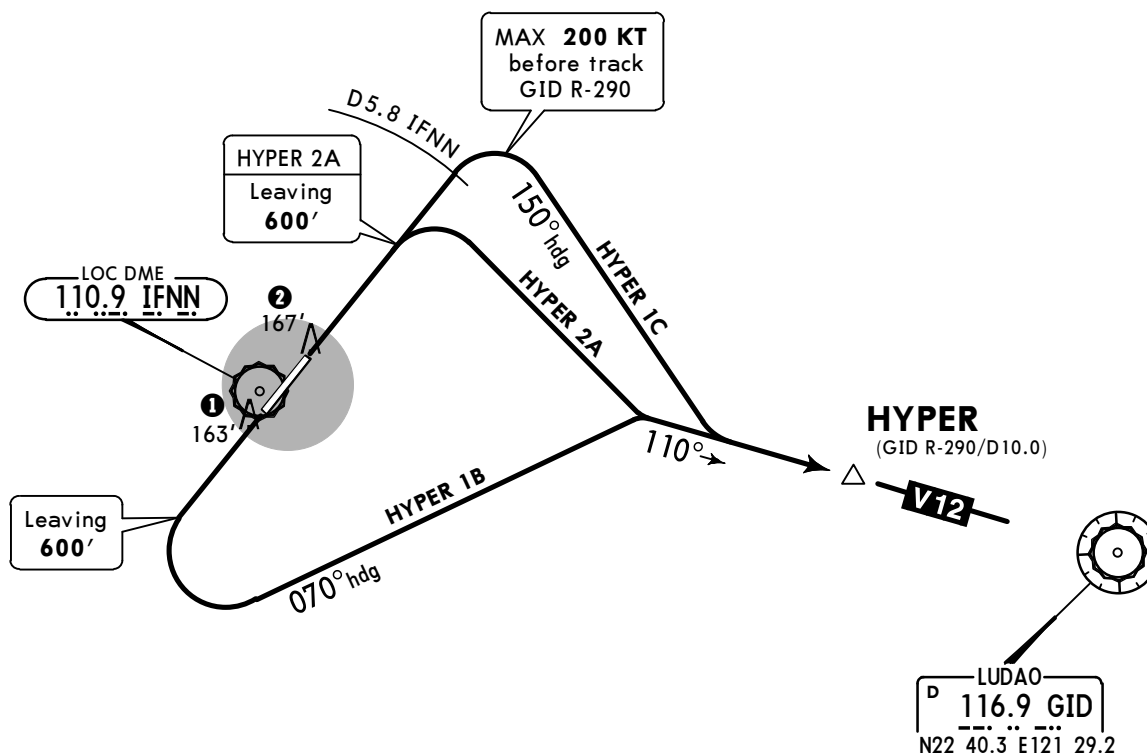
Trans level: FL130 Trans alt: 11000'  
High terrain around the airport.



HYPER 2A [HYPE2A]  
HYPER 1B [HYPE1B]

CAT A & B

HYPER 1C [HYPE1C]  
DEPARTURES  
(ALL RWYS)



CAUTION: (CIO) Close-in obstacles (trees and poles):

- ① 163' MSL, 69m SOUTH of RWY 04 THR.
- ② 167' MSL, 96m NORTHEAST of RWY 22 THR.

These SIDs require minimum climb gradients of:

HYPER 2A: 5.0% (304' per NM) until 600'.

HYPER 1C: 6.6% (400' per NM) until 2000'.

Gnd speed-KT	75	100	150	200	250	300
5.0% V/V (fpm)	380	506	760	1013	1266	1519
6.6% V/V (fpm)	501	668	1003	1337	1671	2005

SID	RWY	INITIAL CLIMB
HYPER 2A	04	Depart runway heading until 600', turn RIGHT to track GID R-290 to HYPER to join V12 transition.
HYPER 1B	22	Depart runway heading until 600', turn LEFT heading 070° to track GID R-290 to HYPER to join V12 transition.
HYPER 1C	04	Depart runway heading until D5.8 IFNN, turn RIGHT heading 150° to track GID R-290 to HYPER to join V12 transition.

RCFN/TTT  
FONGNIAN

JEPPESEN

TAITUNG, TAIWAN

1 OCT 21

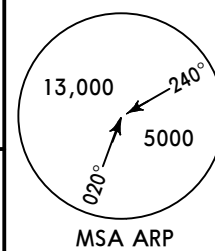
10-3D

Eff 7 Oct

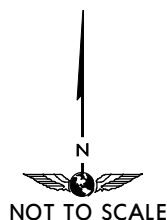
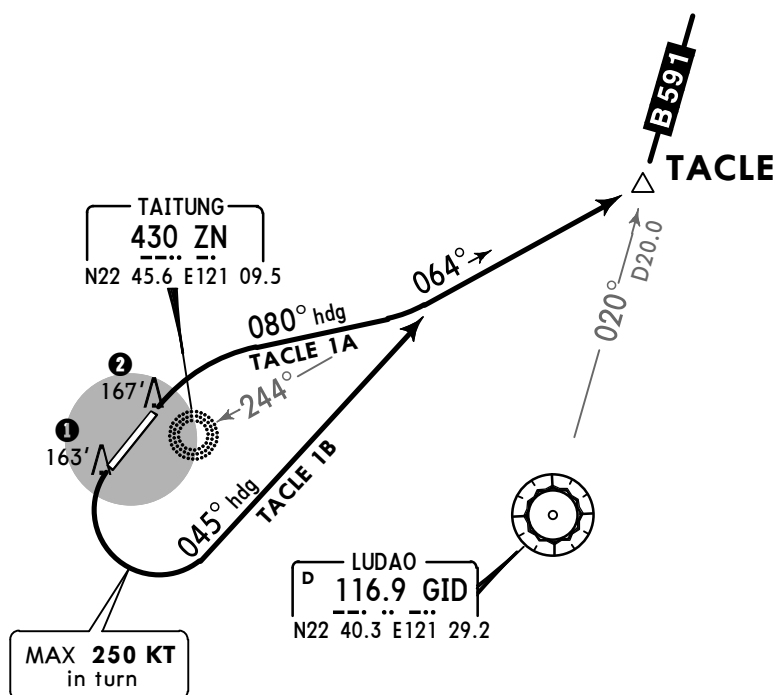
SID

Apt Elev  
143'

Trans level: FL130 Trans alt: 11000'  
High terrain around the airport.



TACLE 1A [TACL1A]  
TACLE 1B [TACL1B]  
DEPARTURES  
(ALL RWYS)



CAUTION: (CIO) Close-in obstacles (trees and poles):

- ① 163' MSL, 69m SOUTH of RWY 04 THR.
- ② 167' MSL, 96m NORTHEAST of RWY 22 THR.

These SIDs require minimum climb gradients of:  
TACLE 1A: 5.0% (300' per NM) until established on the 064° bearing from ZN NDB.  
TACLE 1B: 6.3% (383' per NM) until established on the 064° bearing from ZN NDB.

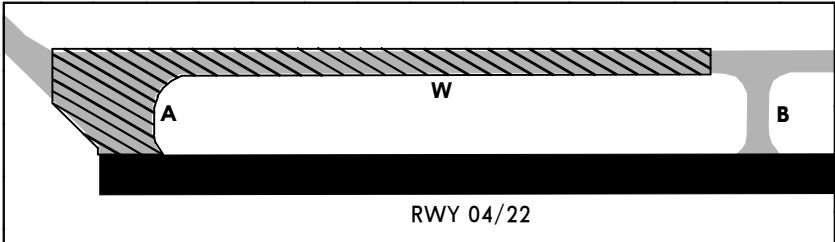
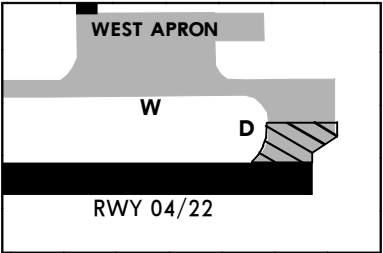
Gnd speed-KT	75	100	150	200	250	300
5.0% V/V (fpm)	380	506	760	1013	1266	1519
6.3% V/V (fpm)	478	638	957	1276	1595	1914

SID	RWY	INITIAL CLIMB
TACLE 1A	04	After departure, turn RIGHT heading 080° to track 064° bearing from ZN NDB to TACLE to join B-591.
TACLE 1B	22	After departure, turn LEFT heading 045° to track 064° bearing from ZN NDB to TACLE to join B-591.

**TAXIWAYS UNDER CONSTRUCTION**

(AIP SUP 04/23)

Estimated construction period is through JUL 2023.  
Individual closed areas will be activated by NOTAM.

Area	Closed Area
16	<p>1. Portion of Twy W (between Twy A (included) and Twy B (excluded)).</p> <p>2. Twy A.</p> <p>3. The maximum aircraft permitted to make a 180° turn at threshold of Rwy 04 is ATR-72.</p> 
17	<p>1. Twy D.</p> <p>2. The maximum aircraft permitted to make a 180° turn at threshold of Rwy 22 is ATR-72.</p> 

# RCFN/TTT

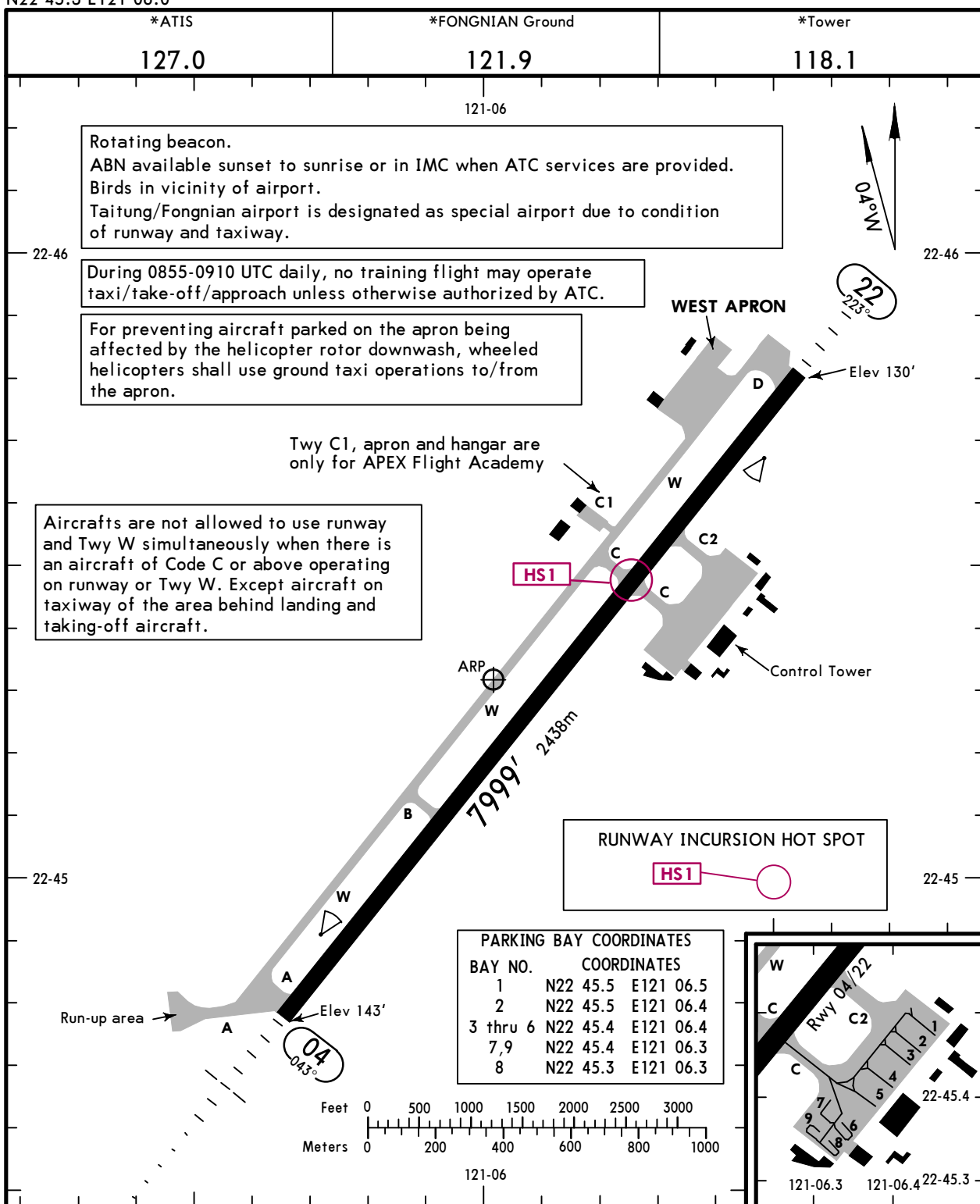
Apt Elev **143'**  
N22 45.3 E121 06.0



23 JUN 23 **(10-9)**

# TAITUNG, TAIWAN

FONGNIAN



Rotating beacon.  
ABN available sunset to sunrise or in IMC when ATC services are provided.  
Birds in vicinity of airport.  
Taitung/Fongnian airport is designated as special airport due to condition of runway and taxiway.

During 0855-0910 UTC daily, no training flight may operate taxi/take-off/approach unless otherwise authorized by ATC.

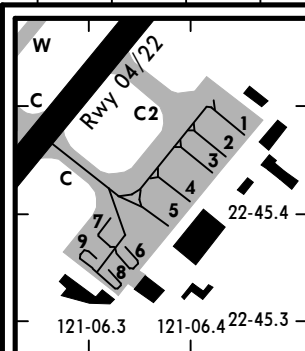
For preventing aircraft parked on the apron being affected by the helicopter rotor downwash, wheeled helicopters shall use ground taxi operations to/from the apron.

Twy C1, apron and hangar are only for APEX Flight Academy

Aircrafts are not allowed to use runway and Twy W simultaneously when there is an aircraft of Code C or above operating on runway or Twy W. Except aircraft on taxiway of the area behind landing and taking-off aircraft.

**RUNWAY INCURSION HOT SPOT**  
HS1

BAY NO.	COORDINATES
1	N22 45.5 E121 06.5
2	N22 45.5 E121 06.4
3 thru 6	N22 45.4 E121 06.4
7,9	N22 45.4 E121 06.3
8	N22 45.3 E121 06.3



### ADDITIONAL RUNWAY INFORMATION

RWY		USABLE LENGTHS			WIDTH
		Threshold	Landing Beyond Glide Slope	TAKE-OFF	
04	HIRL (60m) ① MALSR PAPI-L (angle 3.0°) RVR			③	148'
22	HIRL (60m) REIL ② ALS PAPI-L (angle 3.0°) RVR				45m

- ① length 720m
  - ② length 210m
  - ③ TAKE-OFF RUN AVAILABLE
- RWY 04:**  
From rwy head 7999' 2438m  
Twy B 5535' 1687m
- RWY 22:**  
From rwy head 7999' 2438m  
Twy C 5413' 1650m  
Twy C2 6020' 1835m

State	TAKE-OFF
1 & 2 Eng	V1600m
3 & 4 Eng	R/V800m

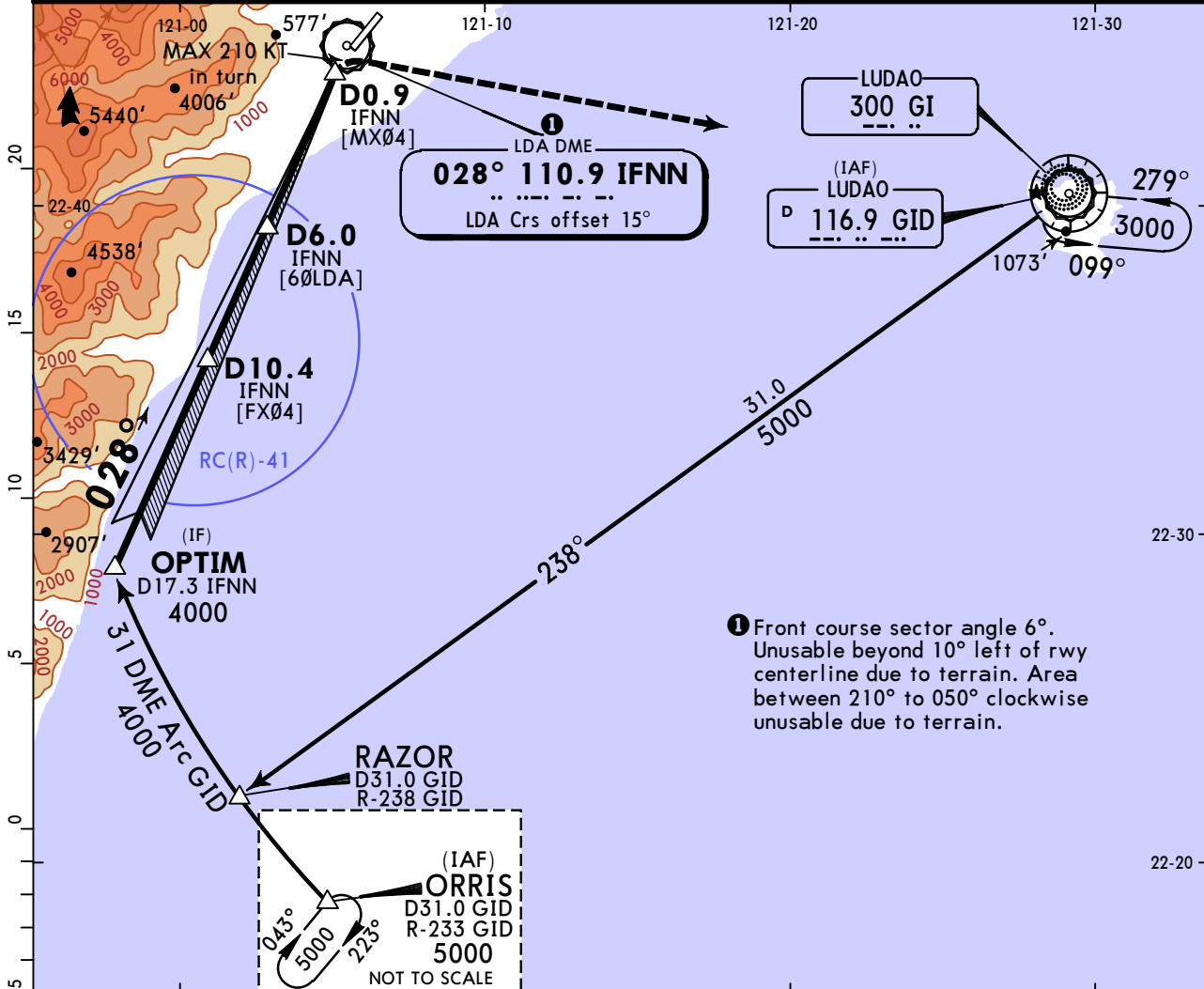
CHANGES: Lighting length.

RCFN/TTT  
FONGNIAN

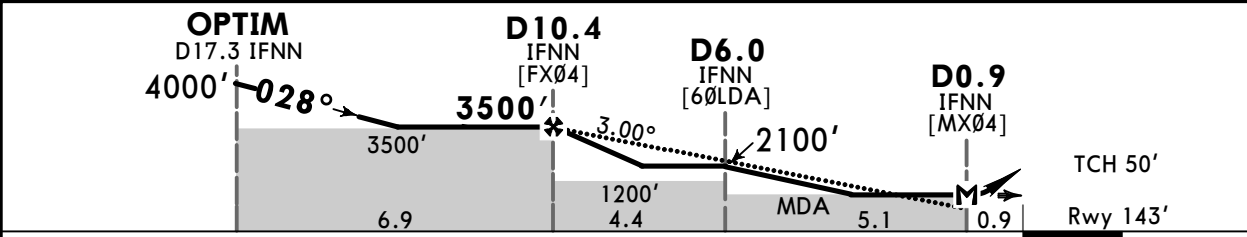
JEPPESSEN  
23 JUN 23 (11-1)

TAITUNG, TAIWAN  
LDA Rwy 04

*ATIS 127.0	KAOHSIUNG Approach 119.4 123.1		*FONGNIAN Tower 118.1	*Ground 121.9
LDA IFNN 110.9	Final Apch Crs 028°	D10.4 IFNN 3500' (3357')	MDA(H) 580' (437')	Apt Elev 143' Rwy 143'
<b>MISSED APCH:</b> Turn RIGHT direct to GID VOR/GI NDB, maintain 3000' and hold. Note when GID VOR and GI NDB both are not available, missed approach: turn RIGHT heading 110°, maintain 3000', expect radar vector.				<p>MSA ARP</p>
Alt Set: hPa Rwy Elev: 5 hPa Trans level: FL130 Trans alt: 11000'				
1. DME required. 2. CAUTION: High terrain along the approach course. 3. The final approach course is offset from landing runway by 15°. 4. The approach course infringes RC(R)-41 area, prior coordination with Chinese Air Force will be completed by ATC before issuing clearance during RC(R)-41 active hours. 5. Circling not authorized.				



DIST to IFNN	10.0	9.0	8.0	7.0	6.0	5.0	4.0	3.0	2.0
ALTITUDE	3400'	3080'	2760'	2440'	2120'	1800'	1480'	1170'	850'



Gnd speed-Kts	70	90	100	120	140	160	MALSR	3000'	D →	GID 116.9	or GI 300
Descent Angle	3.00°	372	478	531	637	849	PAPI	RT			
MAP at D0.9 IFNN											

**State** STRAIGHT-IN LANDING  
MDA(H) 580' (437')

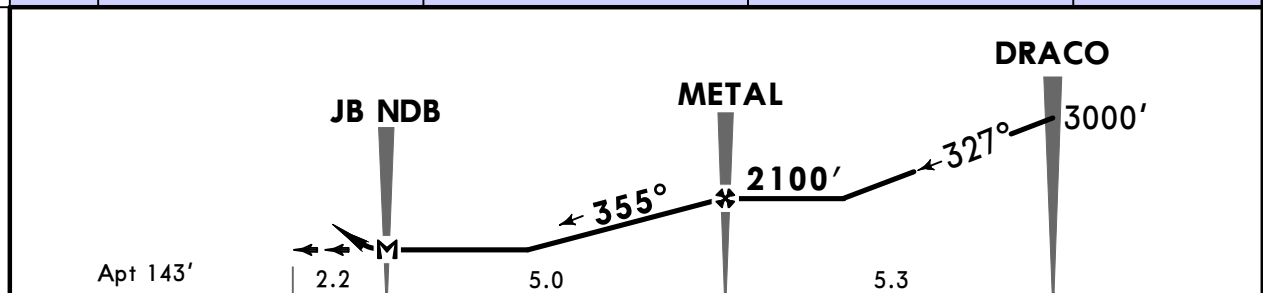
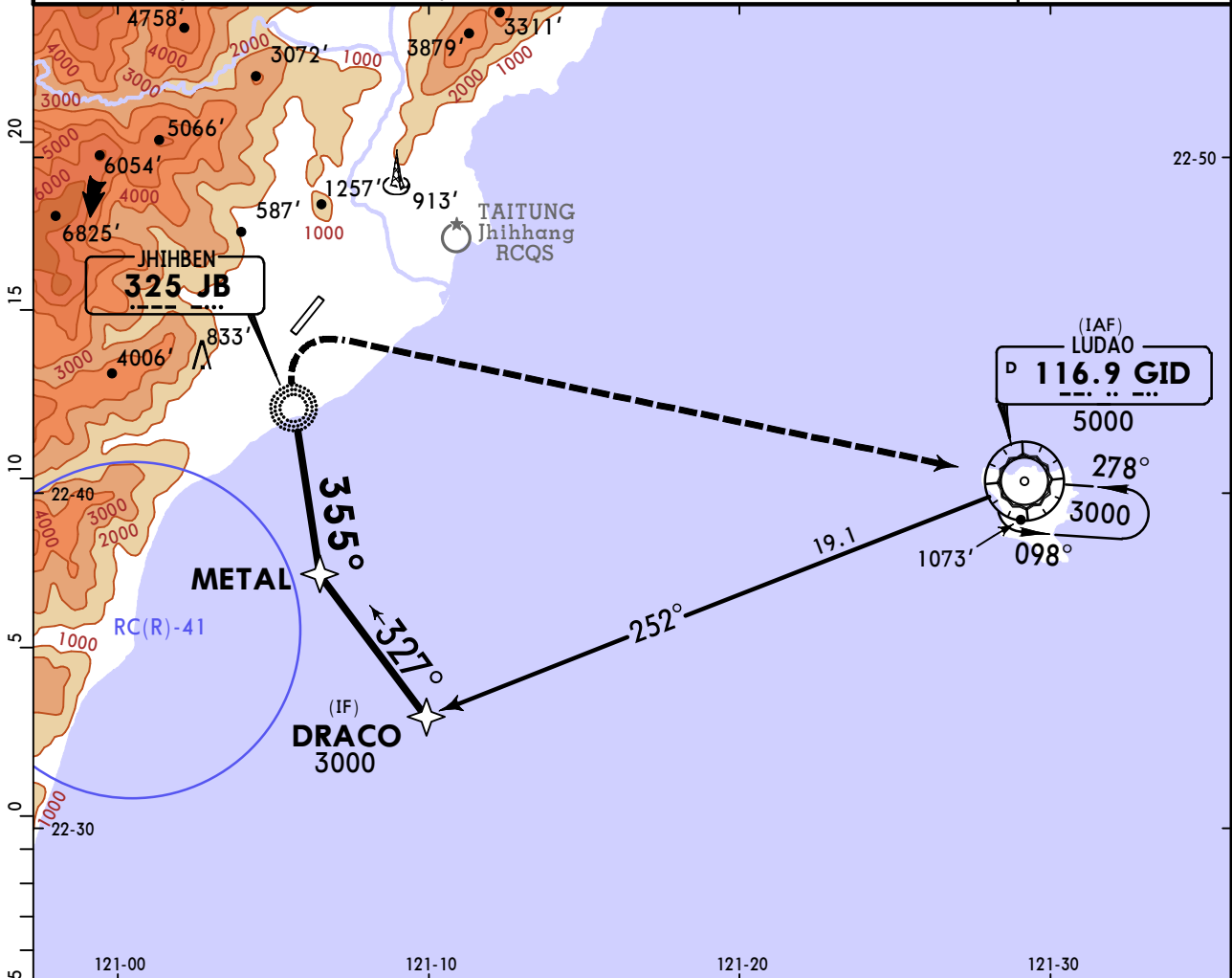
ALS out	
A	R/V1200m
B	V1600m
C	R1200m
D	V1300m

**RCFN/TTT**  
**FONGNIAN**

**JEPPESEN**  
28 OCT 22 **(12-1)**

**TAITUNG, TAIWAN**  
**RNP-F**

*ATIS <b>127.0</b>		KAOHSIUNG Approach <b>119.4 123.1</b>		*FONGNIAN Tower <b>118.1</b>		*Ground <b>121.9</b>	
RNAV	Final Apch Crs <b>355°</b>	<b>METAL</b> <b>2100'</b> (1957')		MDA(H) Refer to Minimums	Apt Elev 143'		<p>MSA ARP</p>
<b>MISSED APCH: Turn RIGHT direct to GID VOR, maintain 3000' and hold.</b>							
RNP Apch	Alt Set: hPa	Apt Elev: 5 hPa	Trans level: FL130	Trans alt: 11000'			
<b>CAUTION: High terrain around the airport.</b>							



MAP at JB NDB				Lighting - Refer to Airport Chart	<b>3000'</b> RT	<b>D</b>	<b>GID 116.9</b>
---------------	--	--	--	-----------------------------------	--------------------	----------	------------------

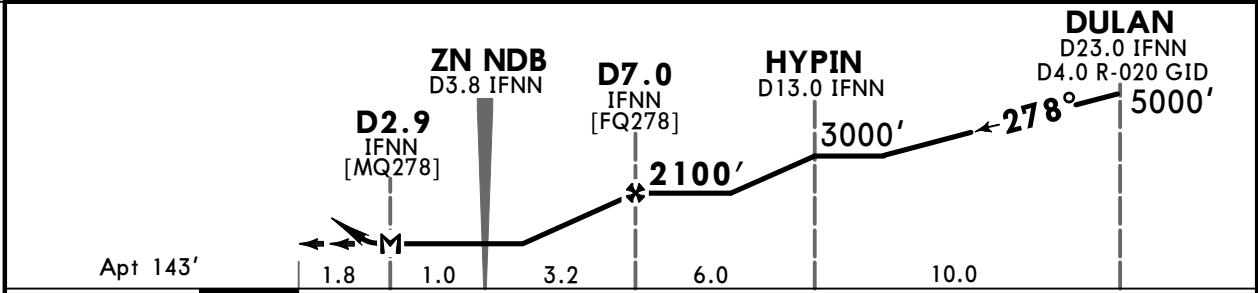
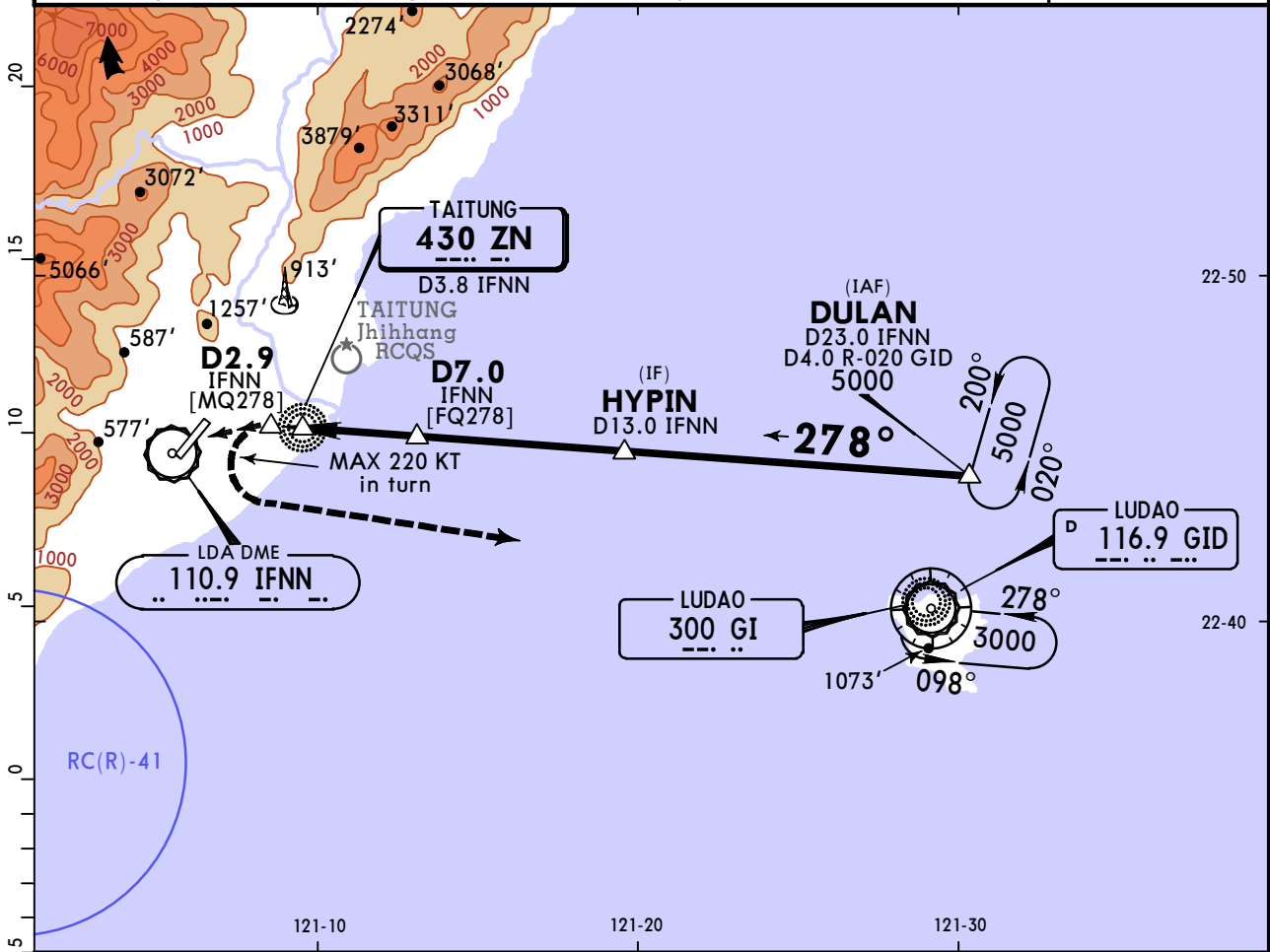
<b>State</b>		<b>CIRCLE-TO-LAND</b>	
Not Authorized Northwest of Rwy			
	Max Kts	MDA(H)	
A	100	600' (457')	V1900m
B	135	640' (497')	V2800m
C	180	1310' (1167')	V3700m
D	205	2060' (1917')	V4600m

RCFN/TTT  
FONGNIAN

JEPPESSEN  
28 OCT 22 (16-1)

TAITUNG, TAIWAN  
NDB-D

*ATIS 127.0	KAOHSIUNG Approach 119.4 123.1		*FONGNIAN Tower 118.1	*Ground 121.9
NDB ZN 430	Final Apch Crs 278°	D7.0 IFNN 2100' (1957')	MDA(H) Refer to Minimums	Apt Elev 143'
MISSED APCH: LEFT turn direct to GI NDB/GID VOR, maintain 3000' and hold.				
Alt Set: hPa	Apt Elev: 5 hPa	Trans level: FL130	Trans alt: 11000'	
1. DME required. 2. CAUTION: High terrain around the airport.				



MAP at D2.9 IFNN	Lighting - Refer to Airport Chart	3000'	D	GI 300 or GID 116.9
------------------	-----------------------------------	-------	---	---------------------

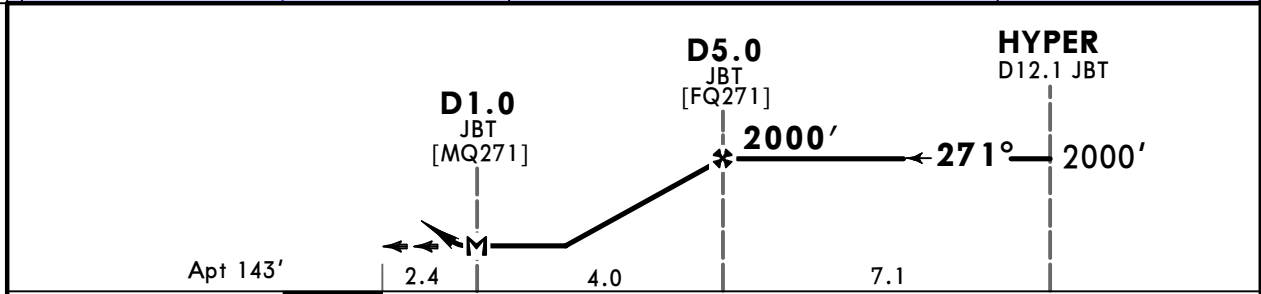
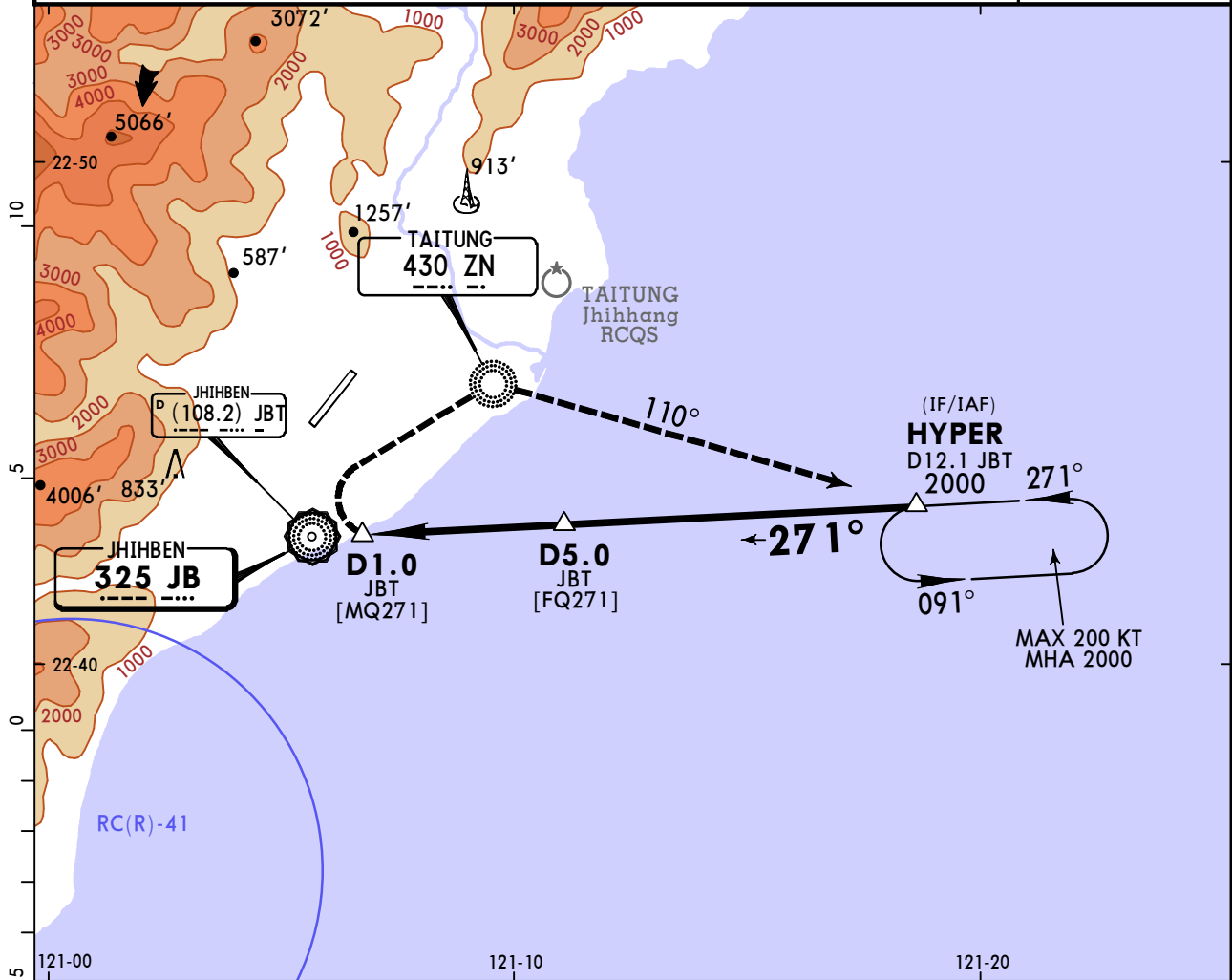
<b>State</b>		CIRCLE-TO-LAND	
Not Authorized Northwest of Rwy			
		MDA(H)	
A	100	600'(457')	V1900m
B	135	640'(497')	V2800m
C	180	1310'(1167')	V3700m
D	205	2060'(1917')	V4600m

**RCFN/TTT  
FONGNIAN**

**JEPPESSEN**  
28 OCT 22 **(16-2)**

**TAITUNG, TAIWAN**  
**CAT A & B NDB-G**

*ATIS <b>127.0</b>	KAOHSIUNG Approach <b>119.4 123.1</b>		*FONGNIAN Tower <b>118.1</b>		*Ground <b>121.9</b>
NDB JB <b>325</b>	Final Apch Crs <b>271°</b>	<b>D5.0 JBT</b> <b>2000'</b> (1857')	MDA(H) Refer to Minimums	Apt Elev <b>143'</b>	<p>MSA ARP</p>
<b>MISSED APCH: Turn RIGHT direct to ZN NDB, then track 110° bearing from ZN NDB to HYPER, maintain 3000' and hold.</b>					
Alt Set: hPa		Apt Elev: 5 hPa	Trans level: FL130	Trans alt: 11000'	
1. DME required. 2. CAUTION: High terrain around the airport.					



MAP at D1.0 JBT	Lighting - Refer to Airport Chart	RT	ZN <b>430</b>
-----------------	-----------------------------------	----	------------------

<b>State</b>		CIRCLE-TO-LAND	
		Not Authorized Northwest of Rwy	
Max Kts		MDA(H)	
A 100		600'(457')	V1900m
B 135		640'(497')	V2800m
C		NA	
D		NA	

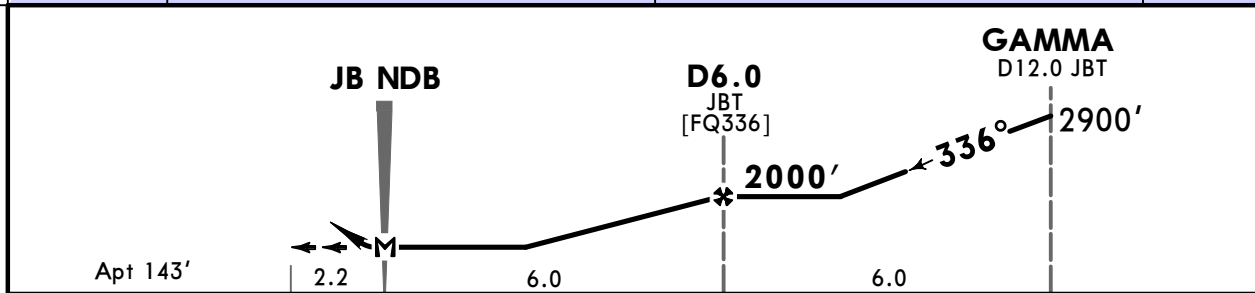
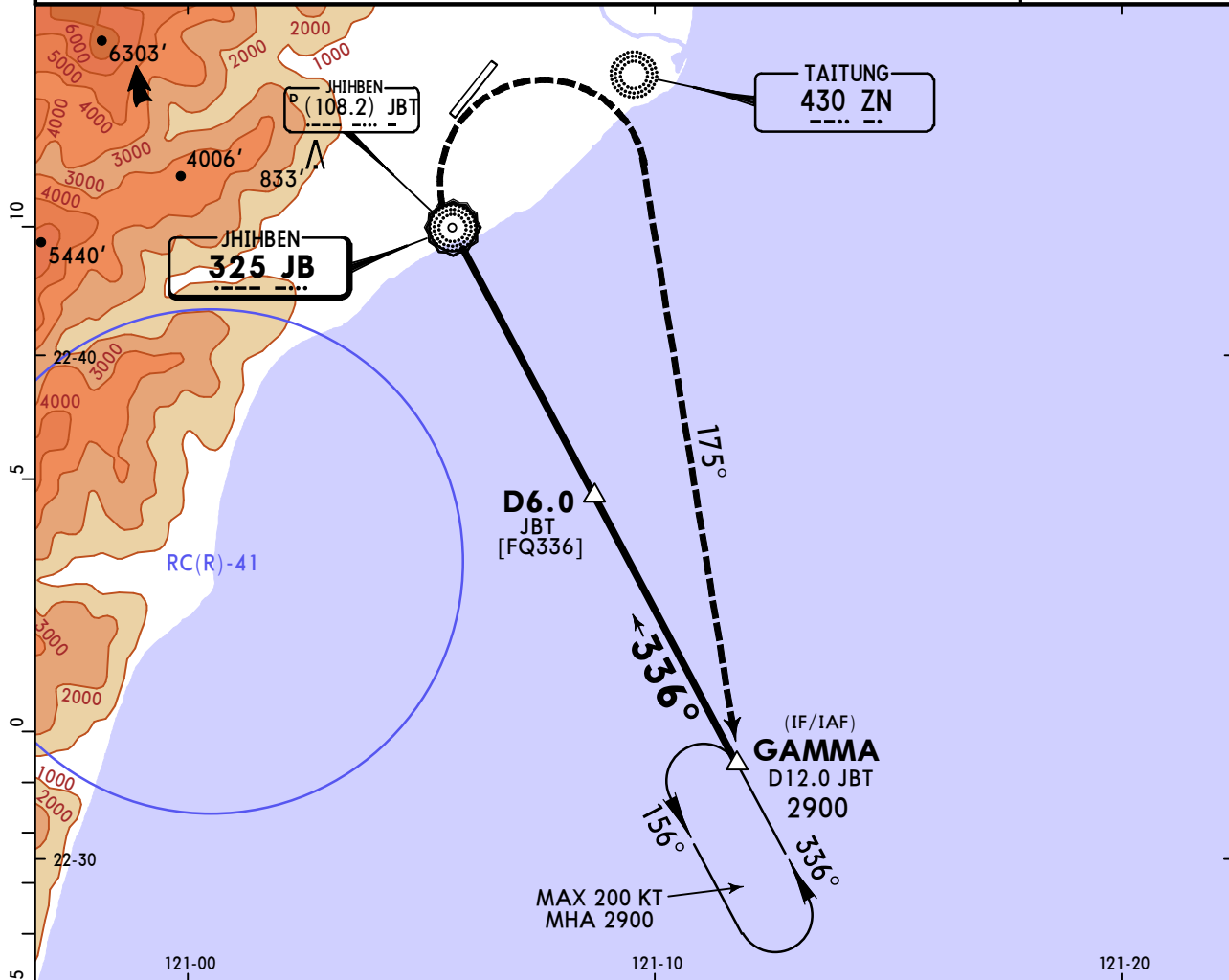
CHANGES: RC(R)-41 added, new AOM concept.

**RCFN/TTT  
FONGNIAN**

**JEPPESSEN**  
28 OCT 22 **(16-3)**

**TAITUNG, TAIWAN**  
**CAT A & B NDB-H**

*ATIS <b>127.0</b>	KAOSHIUNG Approach <b>119.4 123.1</b>		*FONGNIAN Tower <b>118.1</b>		*Ground <b>121.9</b>	
NDB JB <b>325</b>	Final Apch Crs <b>336°</b>	<b>D6.0 JBT</b> <b>2000'</b> (1857')	MDA(H) Refer to Minimums	Apt Elev 143'		
<b>MISSED APCH: Turn RIGHT heading 120° to track 175° bearing from ZN NDB to GAMMA, maintain 3000' and hold.</b>					<p>MSA ARP</p>	
Alt Set: hPa		Apt Elev: 5 hPa	Trans level: FL130			Trans alt: 11000'
1. DME required. 2. CAUTION: High terrain around the airport.						



MAP at JB NDB							Lighting - Refer to Airport Chart	RT	120° hdg to ZN 430 175°
---------------	--	--	--	--	--	--	-----------------------------------	----	-------------------------

<b>State</b>		<b>CIRCLE-TO-LAND</b>	
		Not Authorized Northwest of Rwy	
	Max Kts	MDA(H)	
A	100	600'(457')	V1900m
B	135	640'(497')	V2800m
C		NA	
D		NA	

## Chart changes since cycle 15-2023

ADD = added chart, REV = revised chart, DEL = deleted chart.

ACT	PROCEDURE IDENT	INDEX	REV DATE	EFF DATE
-----	-----------------	-------	----------	----------

**TAITUNG, (FONGNIAN - RCFN)**

## TERMINAL CHART CHANGE NOTICES

No Chart Change Notices for Airport RCFN