

List of pages in this Trip Kit

Trip Kit Index

Airport Information For RCKU

Terminal Charts For RCKU

Revision Letter For Cycle 16-2023

Change Notices

Notebook

General Information

Location: CHIAYI TWN
ICAO/IATA: RCKU / CYI
Lat/Long: N23° 27.27', E120° 24.20'
Elevation: 85 ft

Airport Use: Joint-Use
Daylight Savings: Not Observed
UTC Conversion: -8:00 = UTC
Magnetic Variation: 3.0° W

Customs: Yes
Airport Type: IFR
Landing Fee: No
Control Tower: Yes
Jet Start Unit: No
LLWS Alert: No
Beacon: Yes

Sunrise: 2146 Z
Sunset: 0958 Z

Runway Information

Runway: 18
Length x Width: 10007 ft x 148 ft
Surface Type: concrete
TDZ-Elev: 76 ft
Lighting: Edge, ALS, REIL

Runway: 36
Length x Width: 10007 ft x 148 ft
Surface Type: concrete
TDZ-Elev: 85 ft
Lighting: Edge, ALS

Communication Information

Chiayi Tower: 122.700
Chiayi Tower: 126.180
Chiayi Tower: 23.660 Military
Chiayi Tower: 27.580 Military
Chiayi Tower: 118.600
Chiayi Tower: 26.540 Military
Kaohsiung Approach: 120.600

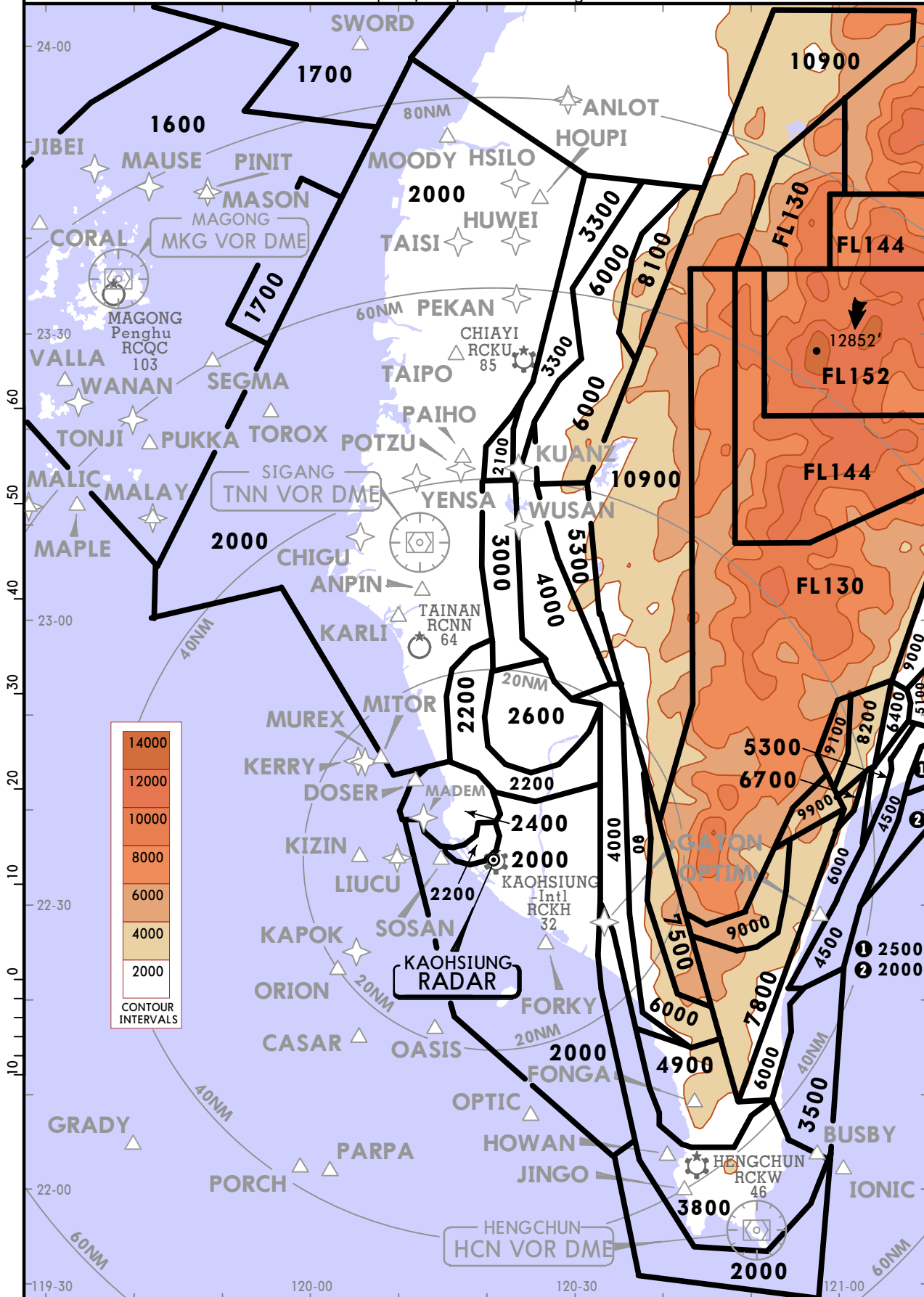
RCKH/KHH KAOHSIUNG INTL (ALSO SERVES CHIAYI, HENGCHUN, PENGHU & TAINAN)

JEPESEN
23 DEC 22 (10-1R) Eff 29 Dec

KAOHSIUNG, TAIWAN

RADAR MINIMUM ALTITUDES

KAOHSIUNG Approach (R)					Apt Elev	Alt Set: hPa	Trans level: FL130	Trans alt: 11000'
121.1	124.7	120.6	129.6	128.1	See Graphic	This chart may only be used for pilots to cross-check altitudes assigned while under RADAR control.		



1. Minimum altitudes are calculated taking into account of minimum clearance above terrain/obstacles. RADAR control service cannot be provided to aircraft below the applicable minimum. However, aircraft at designated altitude in relevant sector is not assured of RADAR contact.

2. LOSS OF COMMUNICATION
 a. SQUAWK 7600 immediately, and b. Follow "Radio Communication Failure Procedures."
 (see Jeppesen text pages / Emergency / State Rules and Procedures - Far East / Taiwan -)

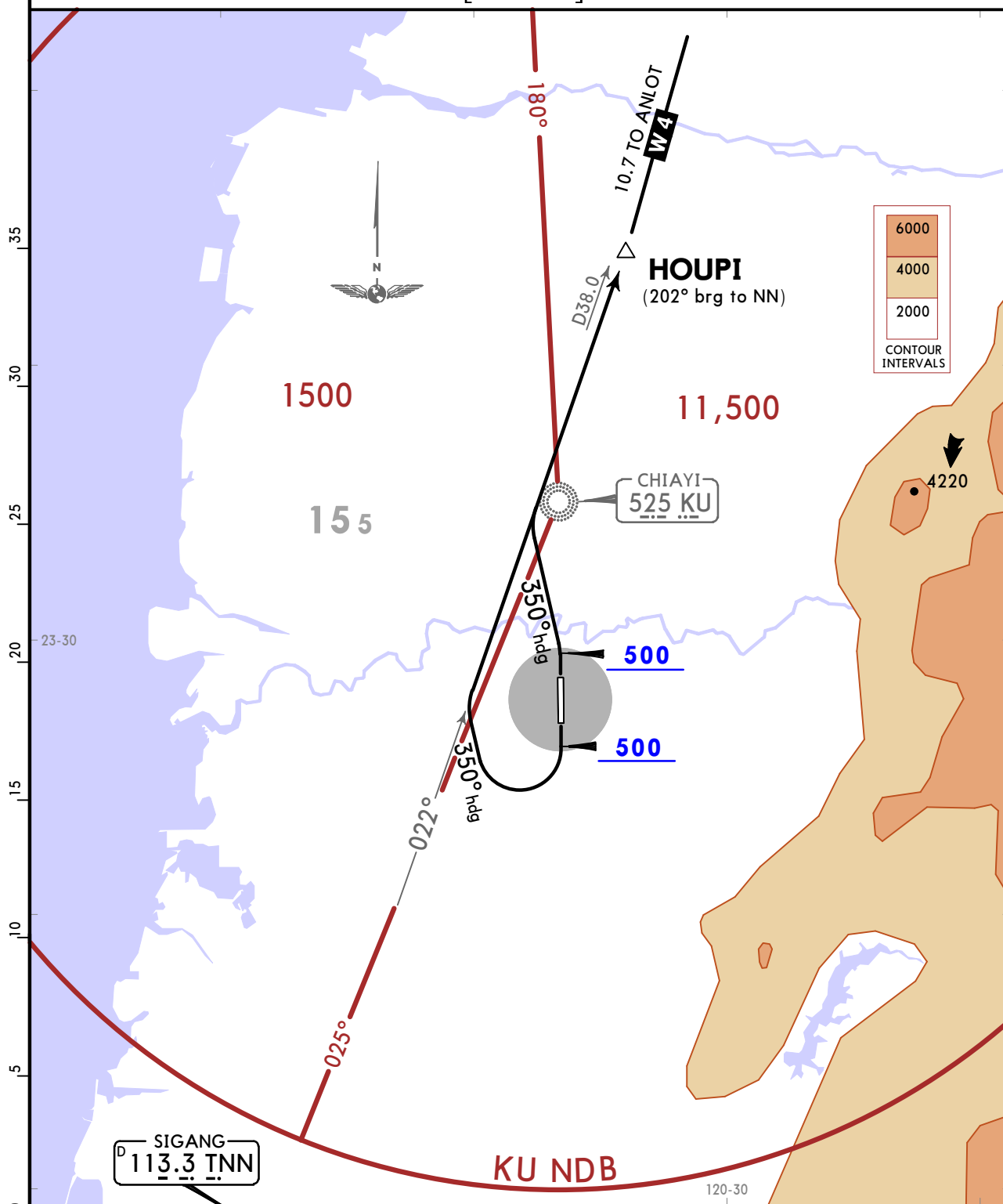
RCKU/CYI
CHIAIYI

JEPPESEN
2 APR 21 10-3

CHIAIYI, TAIWAN
SID

Apt Elev 85 Trans alt: 11000
No early turn before Departure End of Runway.

HOUPI 1 DEPARTURE
[HOUPI1]



SIGANG
D 113.3 TNN

SIGANG
375 NN

KU NDB

This SID requires a minimum climb gradient of:
Rwy 36: 5.3% (325 per NM) to 800.

Gnd speed-KT	75	100	150	200	250	300
5.3% V/V (fpm)	403	537	805	1073	1342	1610

RWY	INITIAL CLIMB
18	Depart runway heading until leaving 500, turn RIGHT heading 350°.
36	Depart runway heading until leaving 500, turn LEFT heading 350°.

ROUTING
Track TNN R022 (022° bearing from NN) to HOUPI to join W-4.

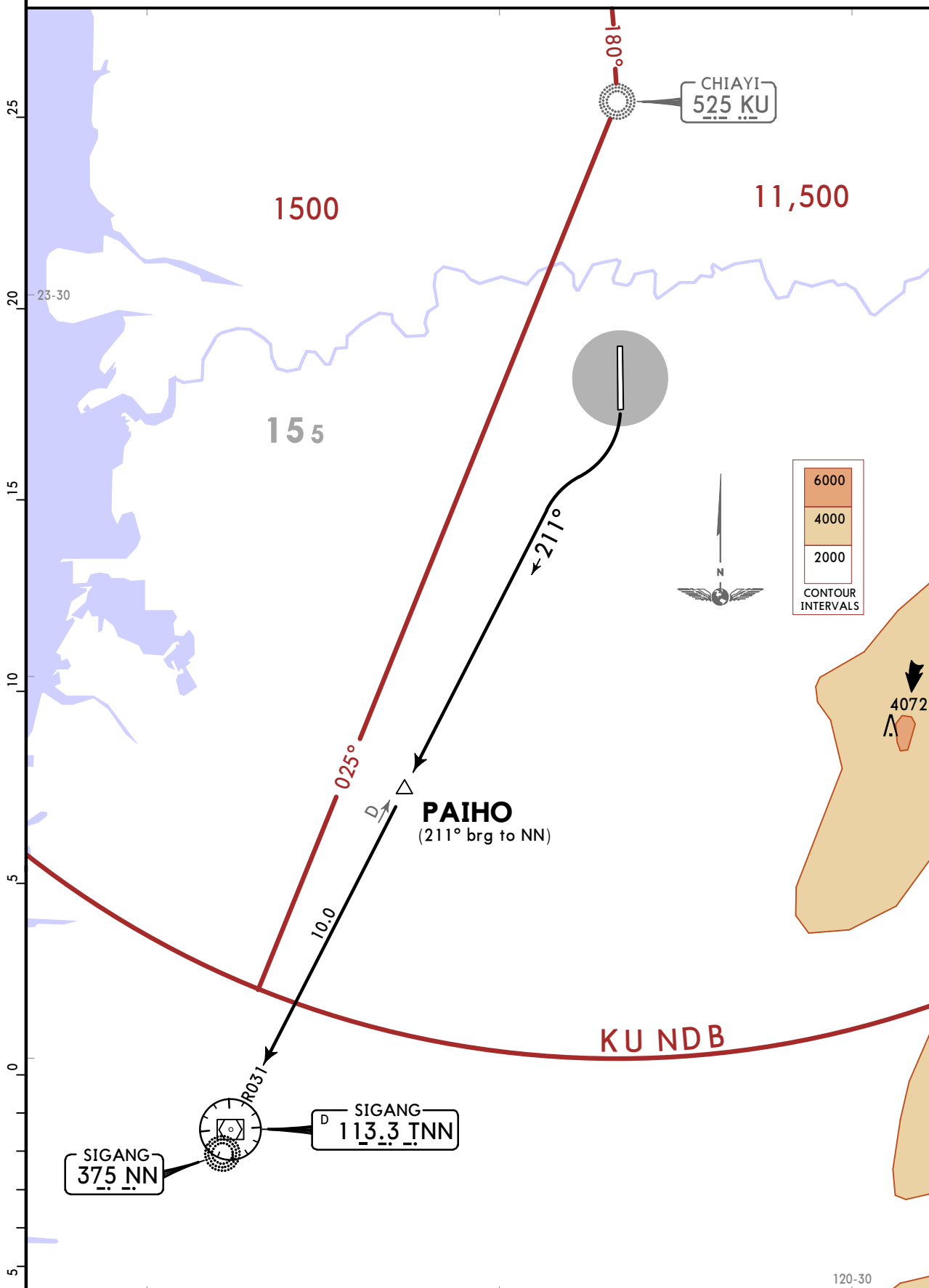
RCKU/CYI
CHIAIYI

JEPPESEN
2 APR 21 (10-3A)

CHIAIYI, TAIWAN
SID

Apt Elev 85 Trans alt: 11000
No early turn before Departure End of Runway.

PAIHO 1 DEPARTURE [PAIH01]



INITIAL CLIMB

After departure, turn RIGHT to track TNN R031 (211° bearing to NN) to PAIHO then TNN VOR/NN NDB to join airway.

RCKU/CYI
CHIAIYI

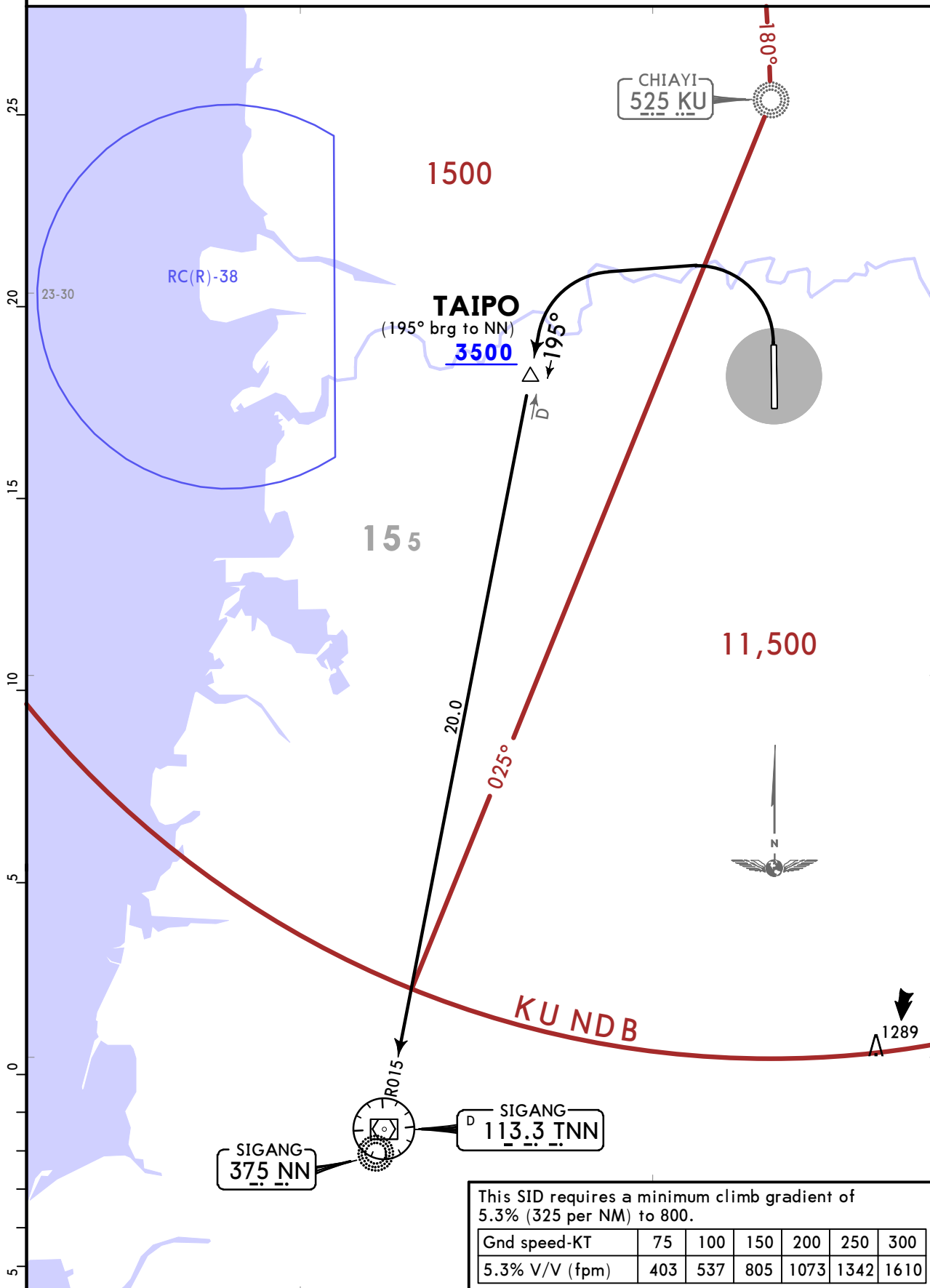
JEPPESEN
19 MAR 21 **(10-3B)** Eff 25 Mar

CHIAIYI, TAIWAN
SID

Apt Elev
85

- Trans alt: 11000
 1. No early turn before Departure End of Runway.
 2. ATS surveillance required when RC(R)-38 in use.

TAIPO 1 DEPARTURE
[TAIPO1]



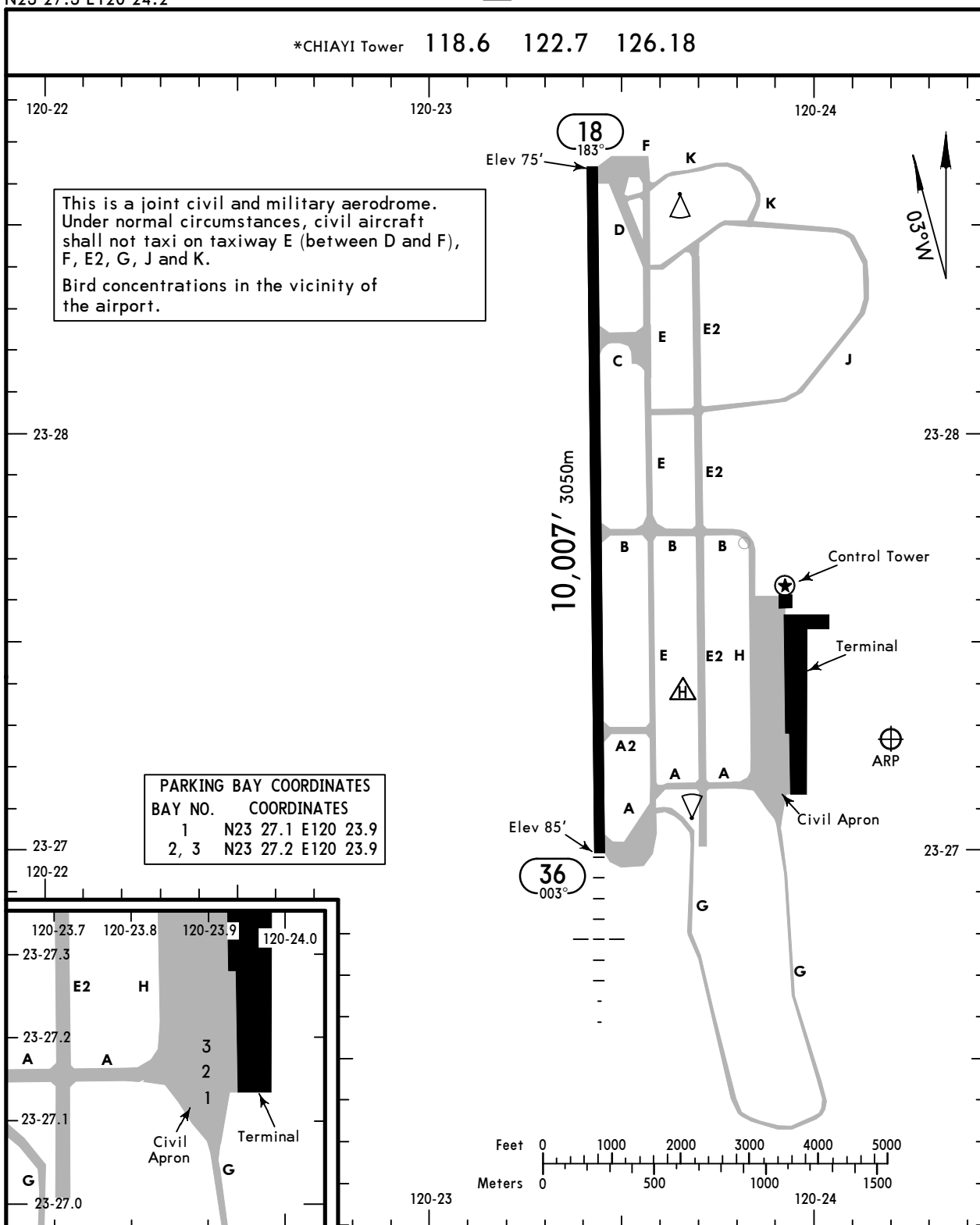
INITIAL CLIMB

After departure, turn LEFT to track TNN R015 (195° bearing to NN) to TAIPO then TNN VOR/NN NDB to join airway, cross TAIPO at or above 3500.

RCKU/CYI
 Apt Elev **85'**
 N23 27.3 E120 24.2

JEPPESEN
 28 APR 23 **(10-9)**

CHIAYI, TAIWAN
 CHIAYI



ADDITIONAL RUNWAY INFORMATION

RWY	REIL	ALS	PAPI-L (angle 3.0°)	RVR	USABLE LENGTHS		TAKE-OFF	WIDTH
					LANDING BEYOND Threshold	Glide Slope		
18	RL (60m)					8967' 2733m		148'
36	RL (60m)	MALSR	PAPI-L (angle 3.0°)	RVR		8942' 2726m		45m

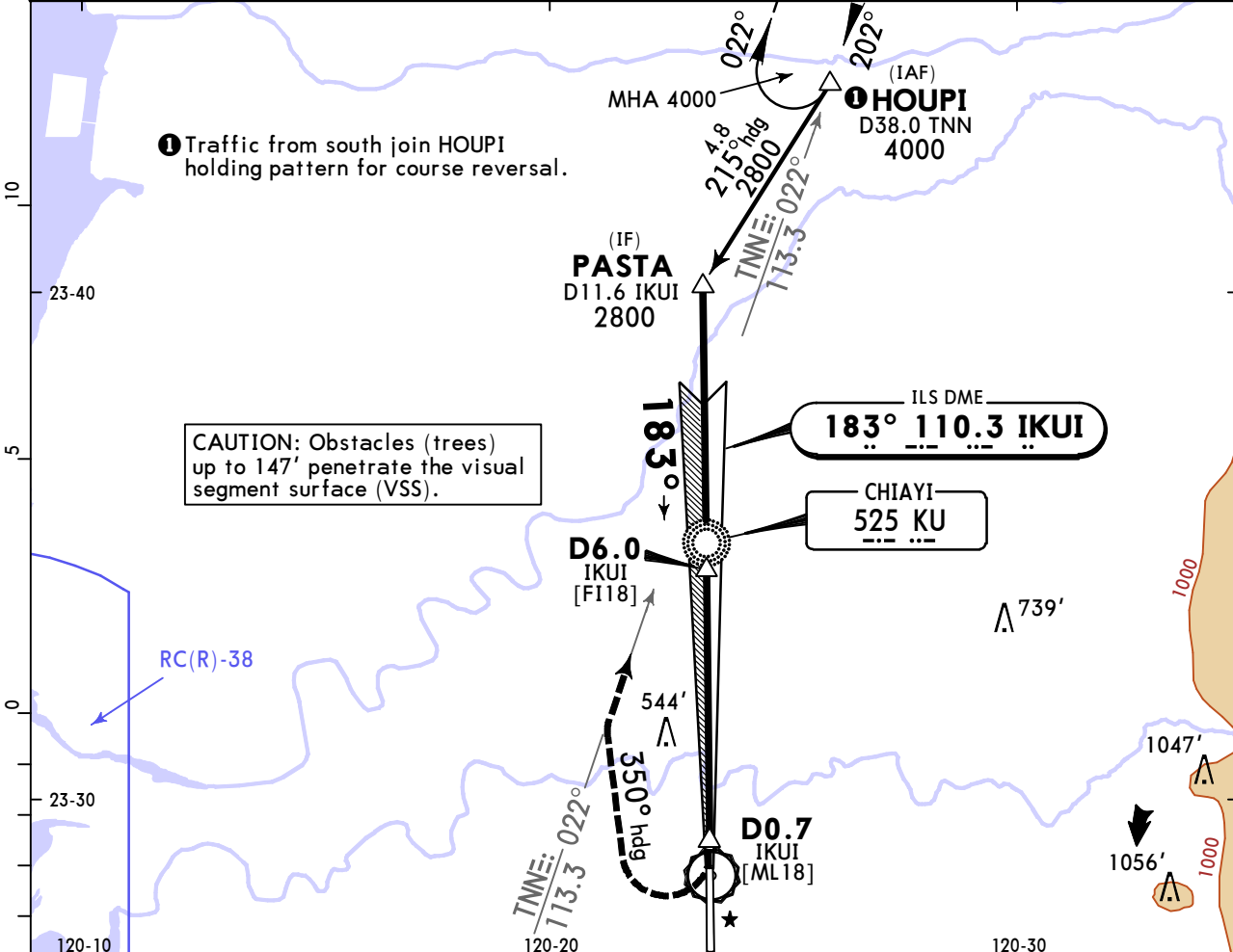
State		TAKE-OFF
		All Rwys
RL & RCLM		NIL (DAY Only)
1 & 2 Eng	R/V550m	V1600m
3 & 4 Eng		R/V800m

RCKU/CYI CHIAIYI

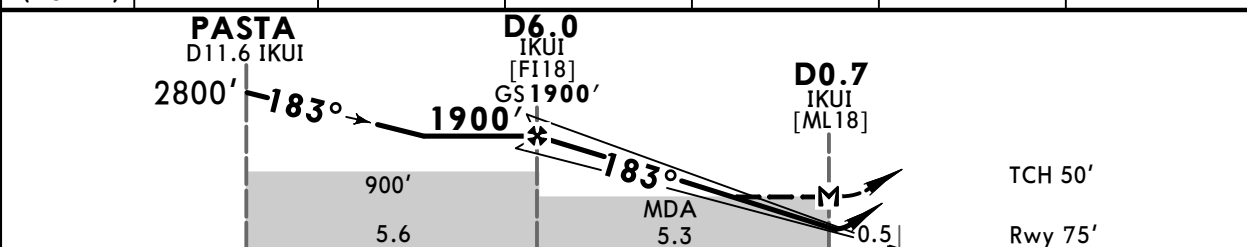
JEPPESEN
28 APR 23 (11-1)

CHIAIYI, TAIWAN ILS or LOC Rwy 18

CHIAIYI Approach 120.6				*CHIAIYI Tower 118.6 122.7 126.18		
LOC IKUI 110.3	Final Apch Crs 183°	D6.0 IKUI 1900' (1825')	ILS DA(H) 275' (200')	Apt Elev 85'	Rwy 75'	
MISSED APCH: Climb runway heading to 600', turn RIGHT heading 350° to track TNN VOR R-022 to HOUPI, maintain 4000' and hold.						
Alt Set: hPa		Rwy Elev: 3 hPa	Trans level: FL130	Trans alt: 11000'		
DME required.						



LOC (GS out)	IKUI DME	6.0	5.0	4.0	3.0	2.0
	ALTITUDE	1990'	1670'	1350'	1040'	720'



Gnd speed-Kts	70	90	100	120	140	160	ALS REIL PAPI-L	Rwy hdg ↑ until leaving 600'
GS 3.00°	372	478	531	637	743	849		
MAP at D0.7 IKUI								

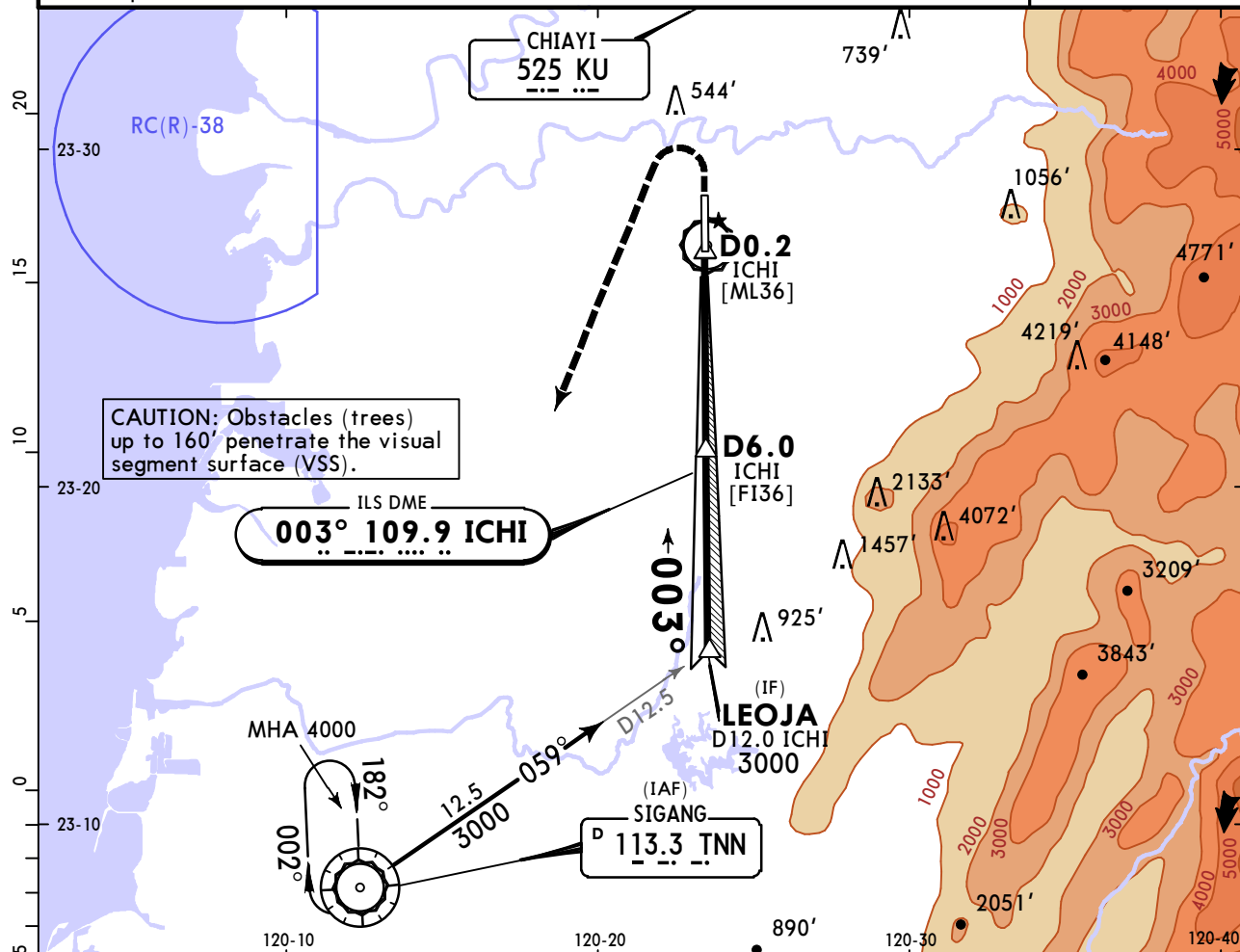
PANS OPS	State ILS STRAIGHT-IN LANDING		LOC (GS out)		CIRCLE-TO-LAND	
	DA(H) 275' (200')		MDA(H) 500' (425')		Not Authorized East of Runway	
	FULL	ALS out	ALS out		Max Kts	MDA(H)
	A	R/V1200m	V1600m	V2000m	100	600' (515') V1900m
B				135	620' (535') V2800m	
C				180	720' (635') V3700m	
D			V2000m		205	780' (695') V4600m

RCKU/CYI CHIAIYI

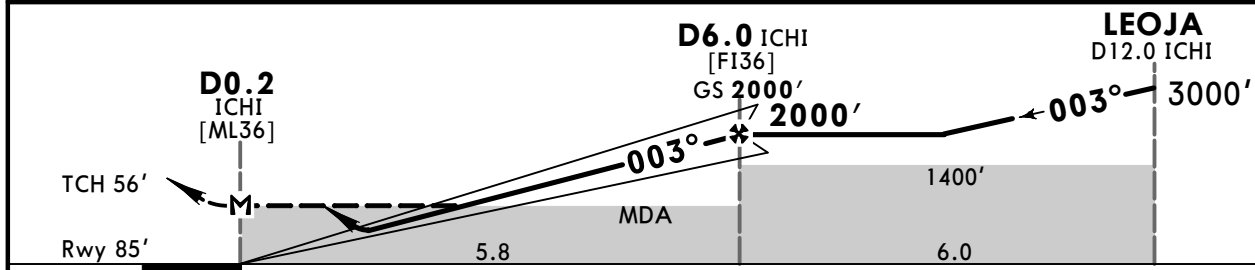
JEPPESSEN
28 APR 23 (11-2)

CHIAIYI, TAIWAN ILS or LOC Rwy 36

KAOHSIUNG Approach 120.6				*CHIAIYI Tower 118.6 122.7 126.18		
LOC ICHI 109.9	Final Apch Crs 003°	D6.0 ICHI 2000' (1915')	ILS DA(H) Refer to Minimums	Apt Elev 85' Rwy 85'		
MISSED APCH: Climb runway heading to 700', turn LEFT direct to TNN VOR, maintain 4000' and hold.						
Alt Set: hPa		Rwy Elev: 3 hPa	Trans level: FL130	Trans alt: 11000'		
DME required.						MSA KU NDB



LOC (GS out)	ICHI DME ALTITUDE	2.0	3.0	4.0	5.0	6.0
		730'	1040'	1360'	1680'	2000'



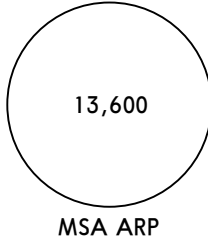
Gnd speed-Kts	70	90	100	120	140	160
GS 3.00°	372	478	531	637	743	849

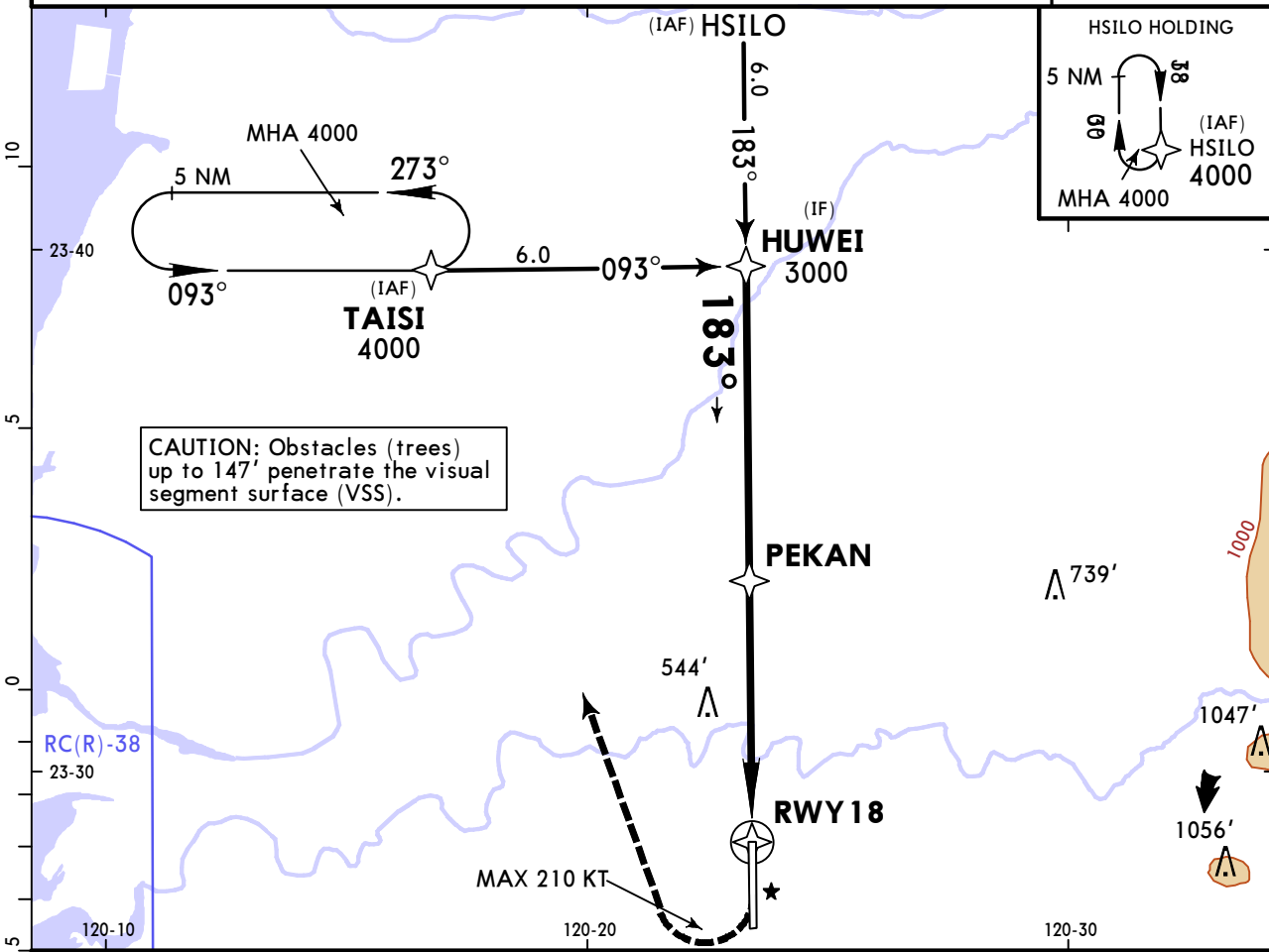
MAP at D0.2 ICHI		MALSR PAPI		700'	Rwy hdg
State			STRAIGHT-IN LANDING		CIRCLE-TO-LAND
ILS DA(H) A, B, C: 285' (200') D: 296' (211')			LOC (GS out) MDA(H) 560' (475')		Not Authorized East of Runway
FULL		RAIL or ALS out		Max Kts	MDA(H)
A			R/V1200m	100	600'(515') V1900m
B	R750m V800m	R/V1200m	V1600m	135	620'(535') V2800m
C			V1600m	180	720'(635') V3700m
D			V2200m	205	780'(695') V4600m

RCKU/CYI
CHIAIYI

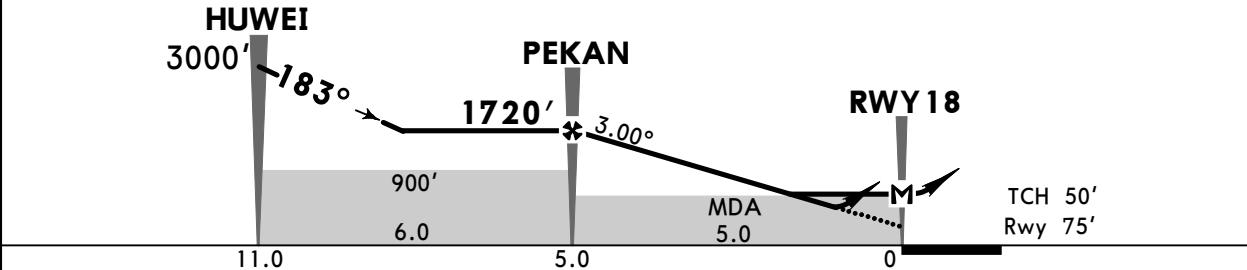
JEPPESEN
28 APR 23 (12-1)

CHIAIYI, TAIWAN
RNP Rwy 18

CHIAIYI Approach				*CHIAIYI Tower	
120.6		118.6		122.7	126.18
RNAV	Final Apch Crs 183°	PEKAN 1720' (1645')	LNAV/VNAV DA(H) 443' (368')	Apt Elev 85'	
MISSED APCH: MAX 210 KT until TAISI. Climb runway heading to 500', turn RIGHT direct TAISI, maintain 4000' and hold.					
RNP Apch Alt Set: hPa Rwy Elev: 3 hPa Trans level: FL130 Trans alt: 11000'					
1. ATS surveillance required when RC(R)-38 in use. 2. Civil aircraft use west traffic circuit. 3. BARO-VNAV not authorized below 0°C.					MSA ARP



DIST to THR	PEKAN	4.0	3.0	2.0	1.2
ALTITUDE	1720'	1400'	1080'	770'	510'



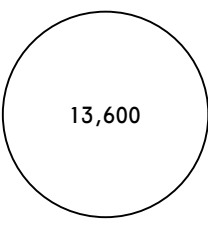
Gnd speed-Kts	70	90	100	120	140	160	ALS REIL PAPI-L	210 KT max	500'	4000'	TAISI
Glide Path Angle 3.00°	372	478	531	637	743	849					
MAP at RWY18											

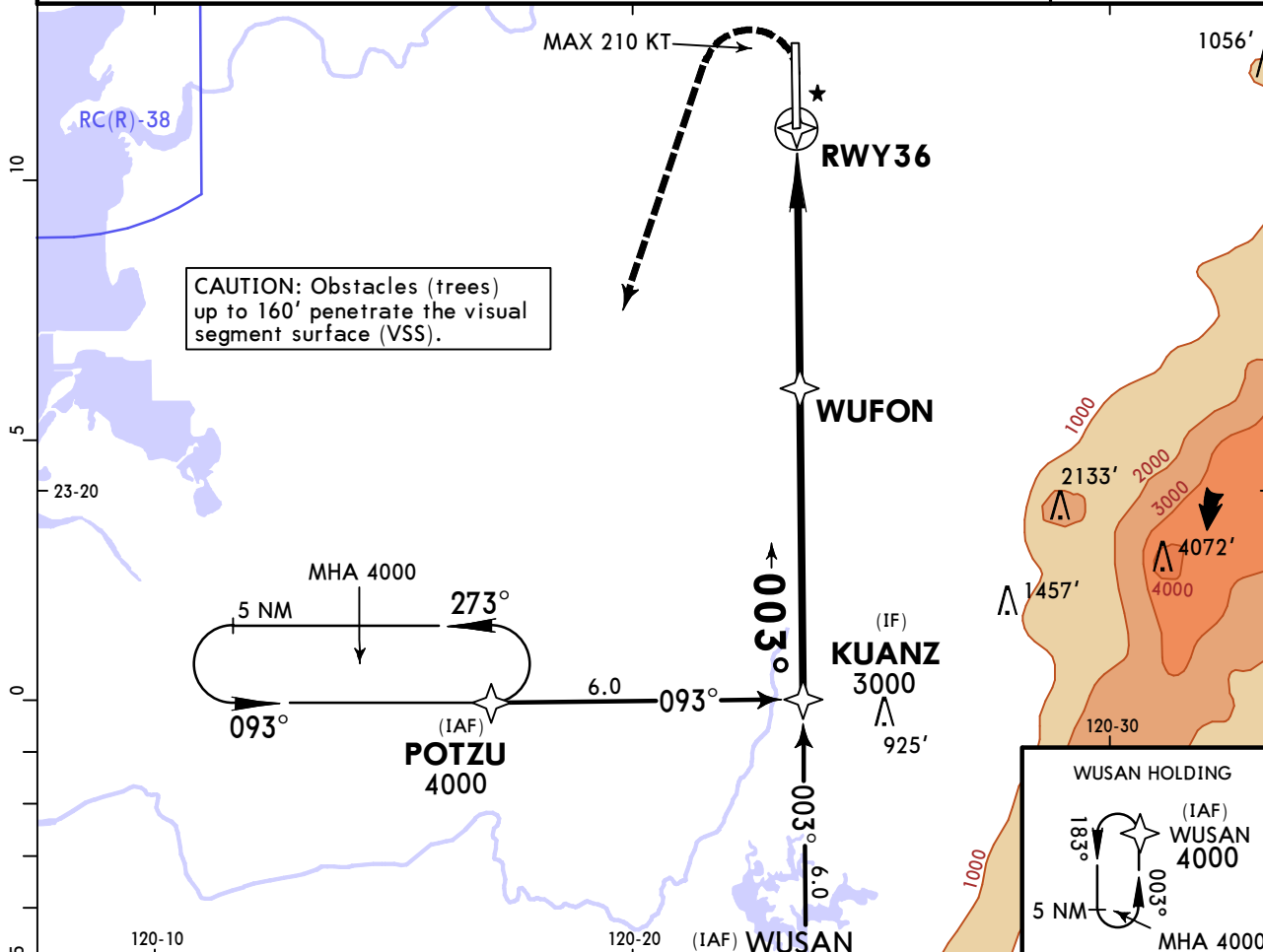
PANS OPS	State		STRAIGHT-IN LANDING	
	LNAV/VNAV DA(H) 443' (368')		LNAV MDA(H) 500' (425')	
	ALS out		ALS out	
	A	V1700m		V2000m
B	V1700m		V2000m	
C	V1700m		V2000m	
D	V1700m		V2000m	

RCKU/CYI
CHIAIYI

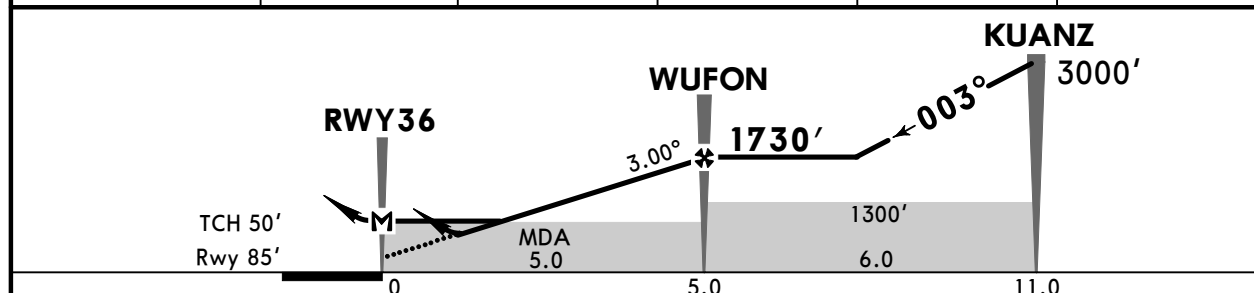
JEPPESEN
28 APR 23 **(12-2)**

CHIAIYI, TAIWAN
RNP Rwy 36

CHIAIYI Approach 120.6			*CHIAIYI Tower 118.6 122.7 126.18		
RNAV	Final Apch Crs 003°	WUFON 1730' (1645')	LNAV/VNAV DA(H) 430' (345')	Appt Elev 85'	 13,600 MSA ARP
MISSED APCH: MAX 210 KT until POTZU. Climb runway heading to 600', turn LEFT direct to POTZU, maintain 4000' and hold.					
RNP Apch	Alt Set: hPa	Rwy Elev: 3 hPa	Trans level: FL130	Trans alt: 11000'	
1. ATS surveillance required when RC(R)-38 in use. 2. Civil aircraft use west traffic circuit. 3. BARO-VNAV not authorized below 0°C.					



DIST to THR	1.1	2.0	3.0	4.0	WUFON
ALTITUDE	490'	780'	1090'	1410'	1730'



Gnd speed-Kts	70	90	100	120	140	160	MALS R	210 KT max	600'	4000'	POTZU
Glide Path Angle	3.00°	372	478	531	637	743	PAPI	↑	←	LT	
MAP at RWY36											

State		STRAIGHT-IN LANDING			
LNAV/VNAV DA(H) 430' (345')		LNAV MDA(H) 490' (405')			
RAIL or ALS out		RAIL or ALS out		RAIL or ALS out	
A		R/V1200m	V1600m		
B	R/V900m	V1600m		V1600m	
C				V1900m	
D					

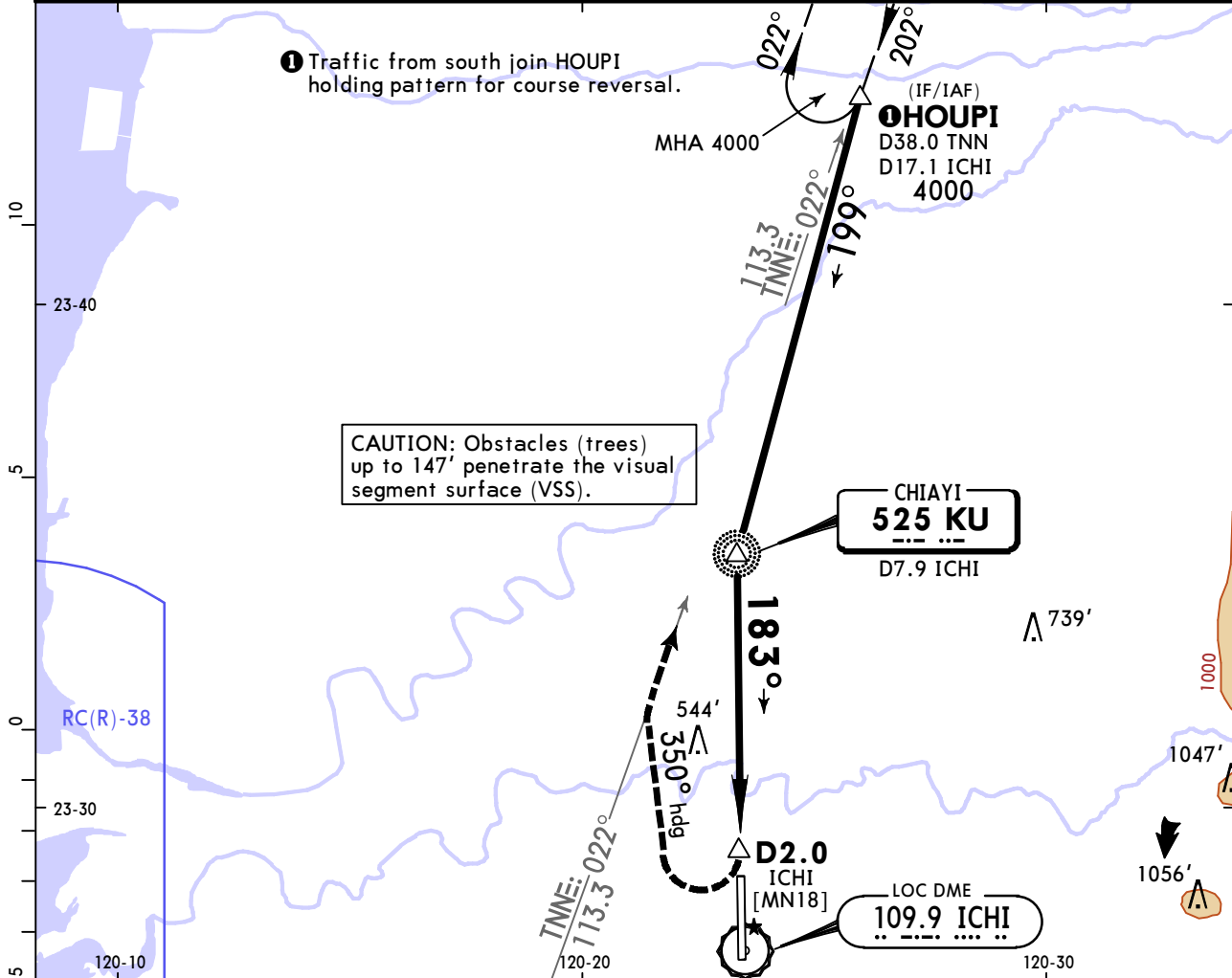
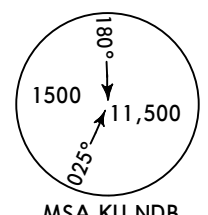
PANS OPS

RCKU/CYI CHIAIYI

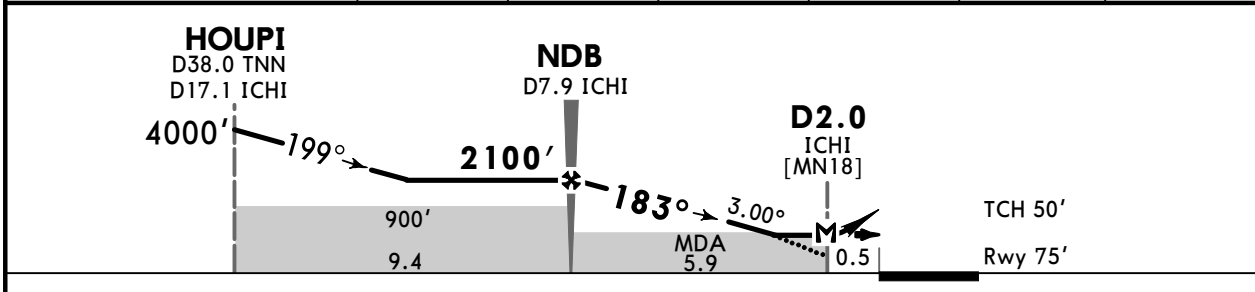
JEPPESSEN
28 APR 23 (16-1)

CHIAIYI, TAIWAN NDB Rwy 18

CHIAIYI Approach 120.6				*CHIAIYI Tower 118.6 122.7 126.18		
NDB KU 525	Final Apch Crs 183°	NDB 2100' (2025')	MDA(H) 600' (525')	Apt Elev 85' Rwy 75'		
MISSED APCH: Climbing RIGHT turn heading 350° to track TNN VOR R-022 to HOUPI, maintain 4000' and hold.						
Alt Set: hPa		Rwy Elev: 3 hPa		Trans level: FL130		Trans alt: 11000'
DME Required.						MSA KU NDB



ICHI DME	8.0	7.0	6.0	5.0	4.0	3.0
ALTITUDE	2200'	1880'	1570'	1250'	930'	610'



Gnd speed-Kts	70	90	100	120	140	160	ALS REIL PAPI-L	RT	350° hdg
Descent Angle 3.00°	372	478	531	637	743	849			
MAP at D2.0 ICHI									

PANS OPS	State STRAIGHT-IN LANDING		CIRCLE-TO-LAND	
	MDA(H) 600' (525')		Not Authorized East of Runway	
	ALS out		Max Kts	MDA(H)
	A	V1600m	V2400m	100 600' (515') V1900m
	B	V2400m		135 620' (535') V2800m
C			180 720' (635') V3700m	
D			205 780' (695') V4600m	

Chart changes since cycle 15-2023

ADD = added chart, REV = revised chart, DEL = deleted chart.

ACT	PROCEDURE IDENT	INDEX	REV DATE	EFF DATE
-----	-----------------	-------	----------	----------

CHIAYI, (CHIAYI - RCKU)

TERMINAL CHART CHANGE NOTICES

No Chart Change Notices for Airport RCKU