

List of pages in this Trip Kit

Trip Kit Index

Airport Information For RCNN

Terminal Charts For RCNN

Revision Letter For Cycle 16-2023

Change Notices

Notebook

General Information

Location: TAINAN TWN
ICAO/IATA: RCNN / TNN
Lat/Long: N22° 56.95', E120° 12.67'
Elevation: 64 ft

Airport Use: Joint-Use
Daylight Savings: Not Observed
UTC Conversion: -8:00 = UTC
Magnetic Variation: 4.0° W

Repair Types: Minor Airframe, Minor Engine
Customs: No
Airport Type: IFR
Landing Fee: No
Control Tower: Yes
Jet Start Unit: No
LLWS Alert: No
Beacon: Yes

Sunrise: 2147 Z
Sunset: 0959 Z

Runway Information

Runway: 18L
Length x Width: 10007 ft x 148 ft
Surface Type: concrete
TDZ-Elev: 63 ft
Lighting: Edge, ALS

Runway: 18R
Length x Width: 10007 ft x 148 ft
Surface Type: concrete
TDZ-Elev: 56 ft
Lighting: Edge

Runway: 36L
Length x Width: 10007 ft x 148 ft
Surface Type: concrete
TDZ-Elev: 25 ft
Lighting: Edge

Runway: 36R
Length x Width: 10007 ft x 148 ft
Surface Type: concrete
TDZ-Elev: 44 ft
Lighting: Edge, ALS

Communication Information

Tainan Tower: 126.180

Tainan Tower: 27.580 Military

Tainan Tower: 118.400

Tainan Tower: 23.660 Military

Tainan Ground: 121.600

Tainan Clearance Delivery: 121.600

Kaohsiung Approach: 124.700

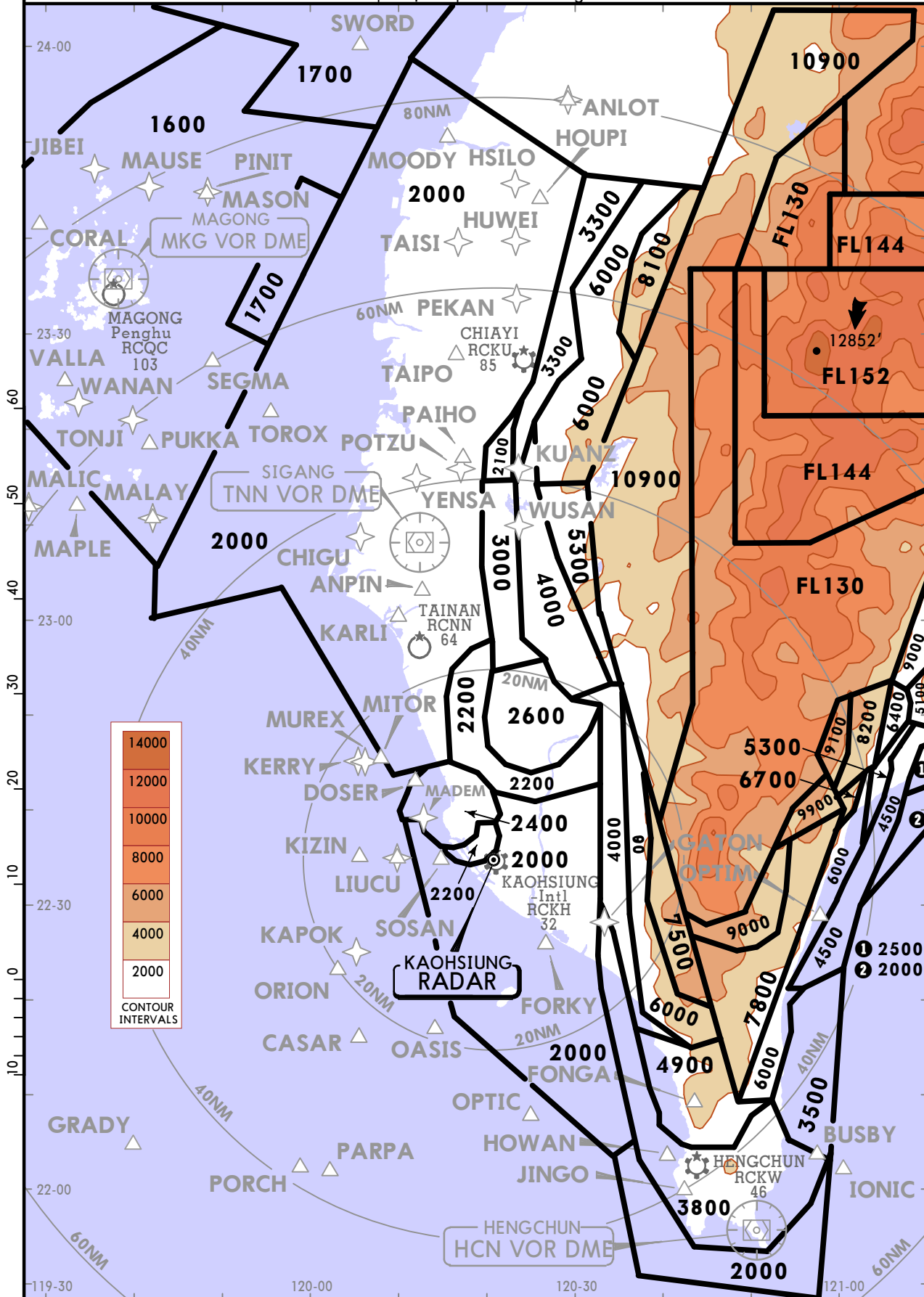
RCKH/KHH KAOHSIUNG INTL (ALSO SERVES CHIAYI, HENGCHUN, PENGHU & TAINAN)

JEPESEN
23 DEC 22 **(10-1R)** Eff 29 Dec

KAOHSIUNG, TAIWAN

RADAR MINIMUM ALTITUDES

KAOHSIUNG Approach (R)					Apt Elev	Alt Set: hPa	Trans level: FL130	Trans alt: 11000'
121.1	124.7	120.6	129.6	128.1	See Graphic	This chart may only be used for pilots to cross-check altitudes assigned while under RADAR control.		



1. Minimum altitudes are calculated taking into account of minimum clearance above terrain/obstacles. RADAR control service cannot be provided to aircraft below the applicable minimum. However, aircraft at designated altitude in relevant sector is not assured of RADAR contact.

2. LOSS OF COMMUNICATION
 a. SQUAWK 7600 immediately, and b. Follow "Radio Communication Failure Procedures."
 (see Jeppesen text pages / Emergency / State Rules and Procedures - Far East / Taiwan -)

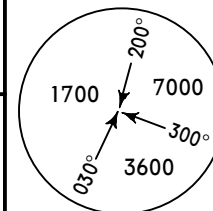
RCNN/TNN
TAINAN

JEPPESEN
25 NOV 22 10-3 Eff 1 Dec

TAINAN, TAIWAN
SID

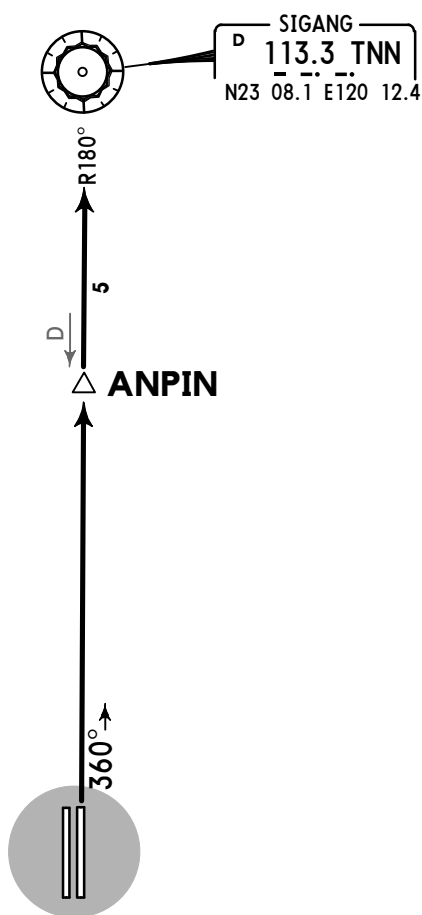
Apt Elev
64'

Trans level: FL130 Trans alt: 11000'



MSA TNN VOR

ANPIN 1 DEPARTURE
[ANPIN1]
(RWYS 18L/36R)



This SID requires a minimum climb gradient of:
5.6% (340' per NM) to 1000'.

Gnd speed-KT	75	100	150	200	250	300
5.6% V/V (fpm)	425	567	851	1134	1418	1701

INITIAL CLIMB

Depart via TNN R-180 to ANPIN then TNN VOR to join airway.

RCNN/TNN
TAINAN

JEPESEN
25 NOV 22 **10-3A** Eff 1 Dec

TAINAN, TAIWAN
SID

Apt Elev 64'	Trans level: FL130 Trans alt: 11000'	<p>MSA TNN VOR</p>
------------------------	--------------------------------------	--------------------

CASAR 1H DEPARTURE
[CASA1H]
(RWYS 18L/36R)

Leaving **3000'**

Leaving **1000'**

SIGANG 113.3 TNN
N23 08.1 E120 12.4

HENGCHUN 113.7 HCN
N21 55.7 E120 50.6

CASAR \triangle 48

120°

R300°

This SID requires minimum climb gradients of:
RWY 18L: 3.8% (235' per NM) to 1200'.
RWY 36R: 5.6% (340' per NM) to 1000'.

Gnd speed-KT	75	100	150	200	250	300
3.8% V/V (fpm)	289	385	577	770	962	1155
5.6% V/V (fpm)	425	567	851	1134	1418	1701

RWY	INITIAL CLIMB
18L	Depart heading 230°.
36R	Depart runway heading until leaving 1000', then turn LEFT heading 270° until leaving 3000', then turn LEFT heading 170°.

ROUTING

Track TNN R-191 to CASAR, then track HCN R-300 to HCN VOR to join airway.

CASAR 1P DEPARTURE
[CASA1P]
(RWYS 18L/36R)

Leaving **3000'**

Leaving **1000'**

SIGANG 113.3 TNN
N23 08.1 E120 12.4

CASAR (113.7 HCN R-300/D48)

PARPA \triangle

120°

D67

16

This SID requires minimum climb gradients of:
Rwy 18L: 3.8% (235' per NM) to 1200'.
Rwy 36R: 5.6% (340' per NM) to 1000'.

Gnd speed-KT	75	100	150	200	250	300
3.8% V/V (fpm)	289	385	577	770	962	1155
5.6% V/V (fpm)	425	567	851	1134	1418	1701

RWY	INITIAL CLIMB
18L	Depart heading 230°.
36R	Depart runway heading until leaving 1000', then turn LEFT heading 270° until leaving 3000', then turn LEFT heading 170°.

ROUTING

Track TNN R-191 to CASAR, then proceed to PARPA to join airway.

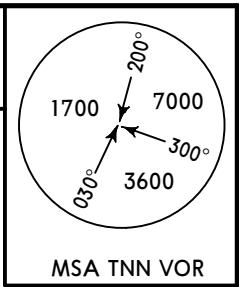
RCNN/TNN
TAINAN

JEPPESEN
19 MAR 21 **10-3B** Eff 25 Mar

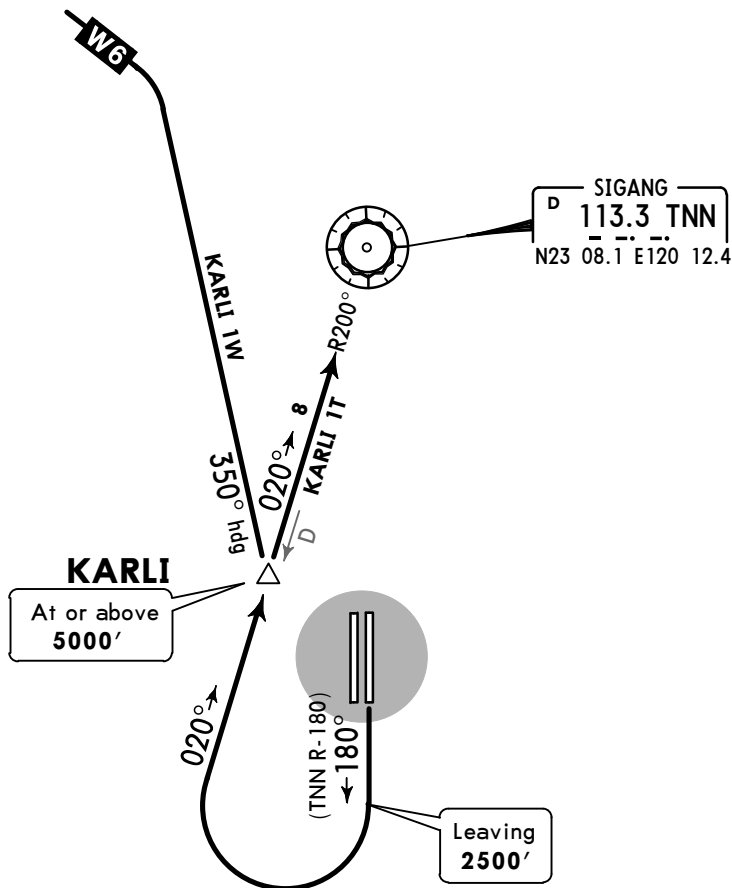
TAINAN, TAIWAN
SID

Apt Elev
64'

Trans level: FL130 Trans alt: 11000'



**KARLI 1T [KARLI1T]
KARLI 1W [KARLI1W]
DEPARTURES**



These SIDs require a minimum climb gradient of:
3.6% (220' per NM) to 1200'.

Gnd speed-KT	75	100	150	200	250	300
3.6% V/V (fpm)	273	365	547	729	911	1094

INITIAL CLIMB

Depart runway heading or via TNN R-180 until leaving 2500', turn RIGHT to track TNN R-200 to KARLI.
Cross KARLI at or above 5000'.

SID	ROUTING
KARLI 1T	At KARLI proceed to TNN VOR to join airway.
KARLI 1W	At KARLI turn LEFT heading 350° to join W-6.

RCNN/TNN
TAINAN

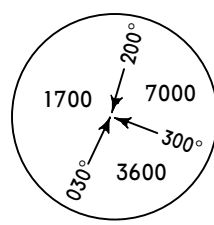
JEPPESEN
19 MAR 21 10-3C Eff 25 Mar

TAINAN, TAIWAN

SID

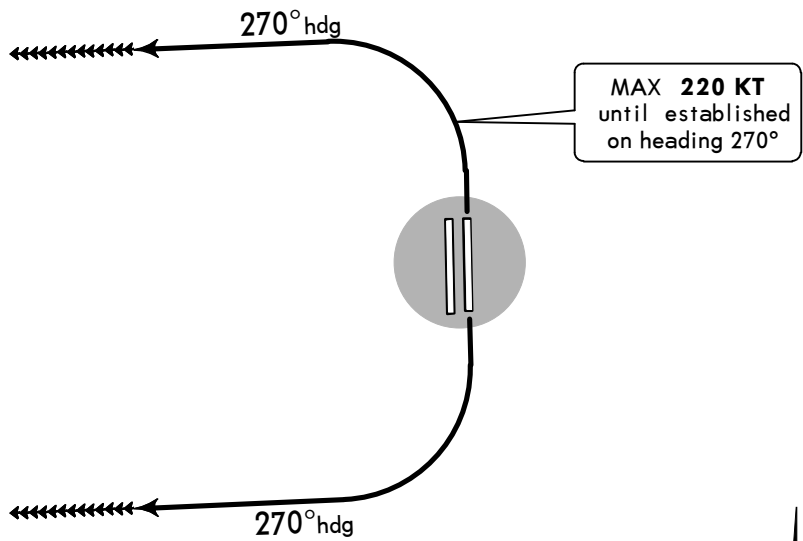
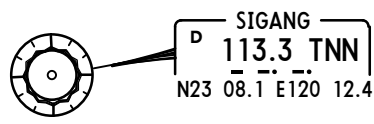
Apt Elev
64'

Trans level: FL130 Trans alt: 11000'



MSA TNN VOR

TAINAN 1 (RADAR) DEPARTURE
[TAINA1]



This SID requires minimum climb gradients:
Rwy 18L: 3.8% (235' per NM) to 1200'.
Rwy 36R: 6.7% (410' per NM) to 1000'.

Gnd speed-KT	75	100	150	200	250	300
3.8% V/V (fpm)	289	385	577	770	962	1155
6.7% V/V (fpm)	509	679	1018	1357	1696	2036

LOST COMMS ▼ LOST COMMS ▼ LOST COMMS ▼ LOST COMMS ▼
 ▼ When encountering radio failure, squawk 7600. MAINTAIN heading 270° to track MKG R-160 to MKG VOR, then follow radio communication failure procedures for IFR aircraft under RADAR vector.
 ▲ LOST COMMS ▲ LOST COMMS ▲ LOST COMMS ▲ LOST COMMS ▲

RWY	INITIAL CLIMB
18L	After departure, turn RIGHT heading 270° climbing to ATC assigned altitude for vectors to assigned route/fix.
36R	After departure, turn LEFT heading 270° climbing to ATC assigned altitude for vectors to assigned route/fix.

RCNN/TNN

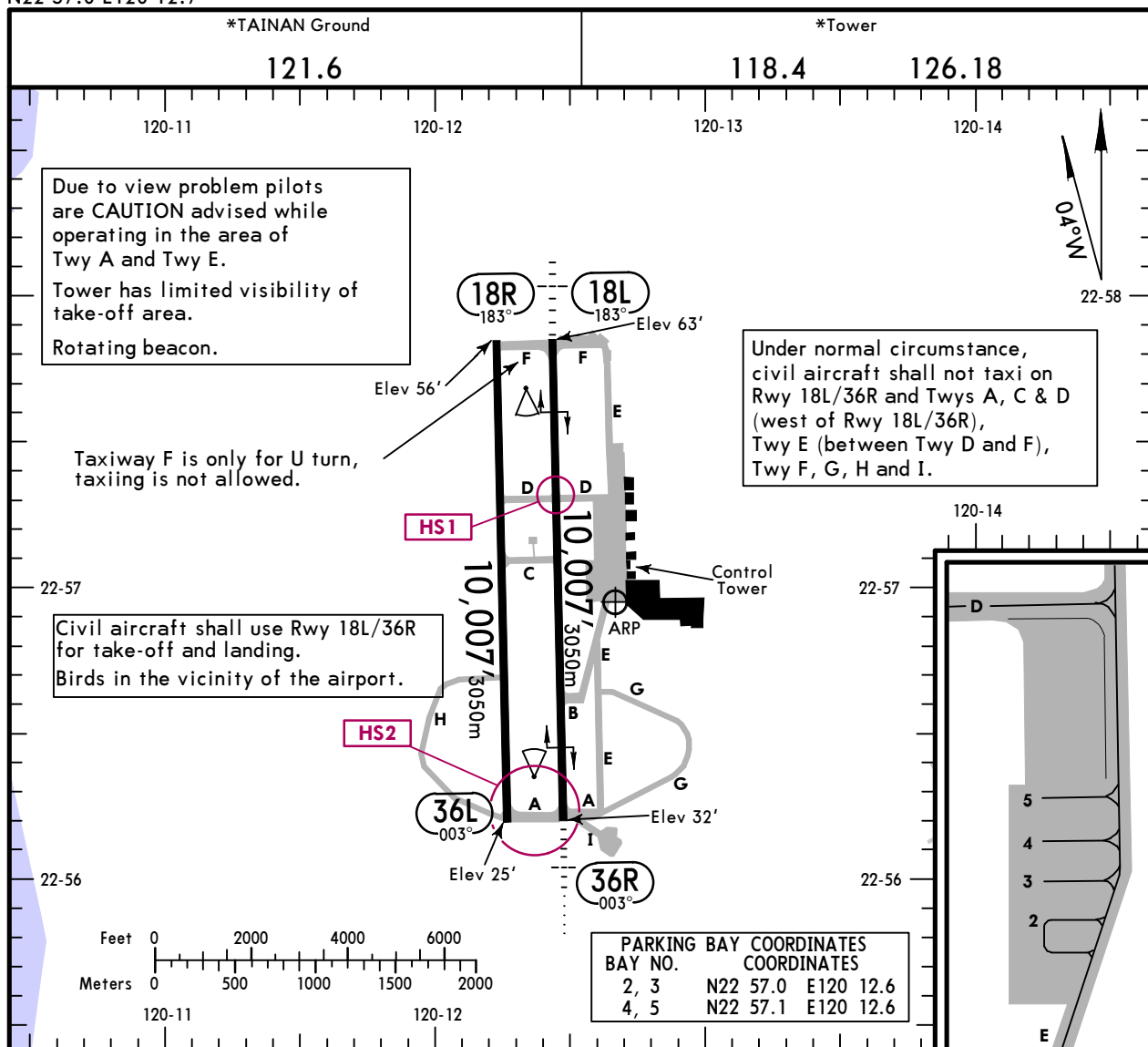
Apt Elev **64'**
N22 57.0 E120 12.7



15 APR 22 **(10-9)** Eff 21 Apr

TAINAN, TAIWAN

TAINAN



ADDITIONAL RUNWAY INFORMATION

RWY					USABLE LENGTHS		TAKE-OFF	WIDTH
					LANDING BEYOND			
	HIRL (60m)	MALSF	PAPI-L (angle 3.0°)	RVR	Threshold	Glide Slope		
18L ① 36R	HIRL (60m)	MALSR	PAPI-L (angle 3.0°)	RVR		8,969' 2734m	②	148' 45m
	HIRL (60m)	MALSR	PAPI-L (angle 3.0°)	RVR		8,886' 2708m		

① Rwy 18L/36 R and 18R/36L closed 21:30 -23.00 UTC daily due to examine work.

② TAKE-OFF RUN AVAILABLE

RWY 18L:

From rwy head 10,007' 3050m
Twy D 6663' 2031m

RWY 36R:

From rwy head 10,007' 3050m
Twy B 7474' 2278m

18R ① 36L	RL	PAPI-L (angle 3.0°)					148' 45m
-----------------	----	---------------------	--	--	--	--	-------------

RUNWAY INCURSION HOT SPOTS **HS**

For information only, not to be construed as ATC instructions.

State

TAKE-OFF

		Rwy 18L/36R	
		RL & RCLM	NIL (DAY Only)
1 & 2 Eng	R/V550m	V1600m	
3 & 4 Eng		R/V800m	

RCNN/TNN TAINAN

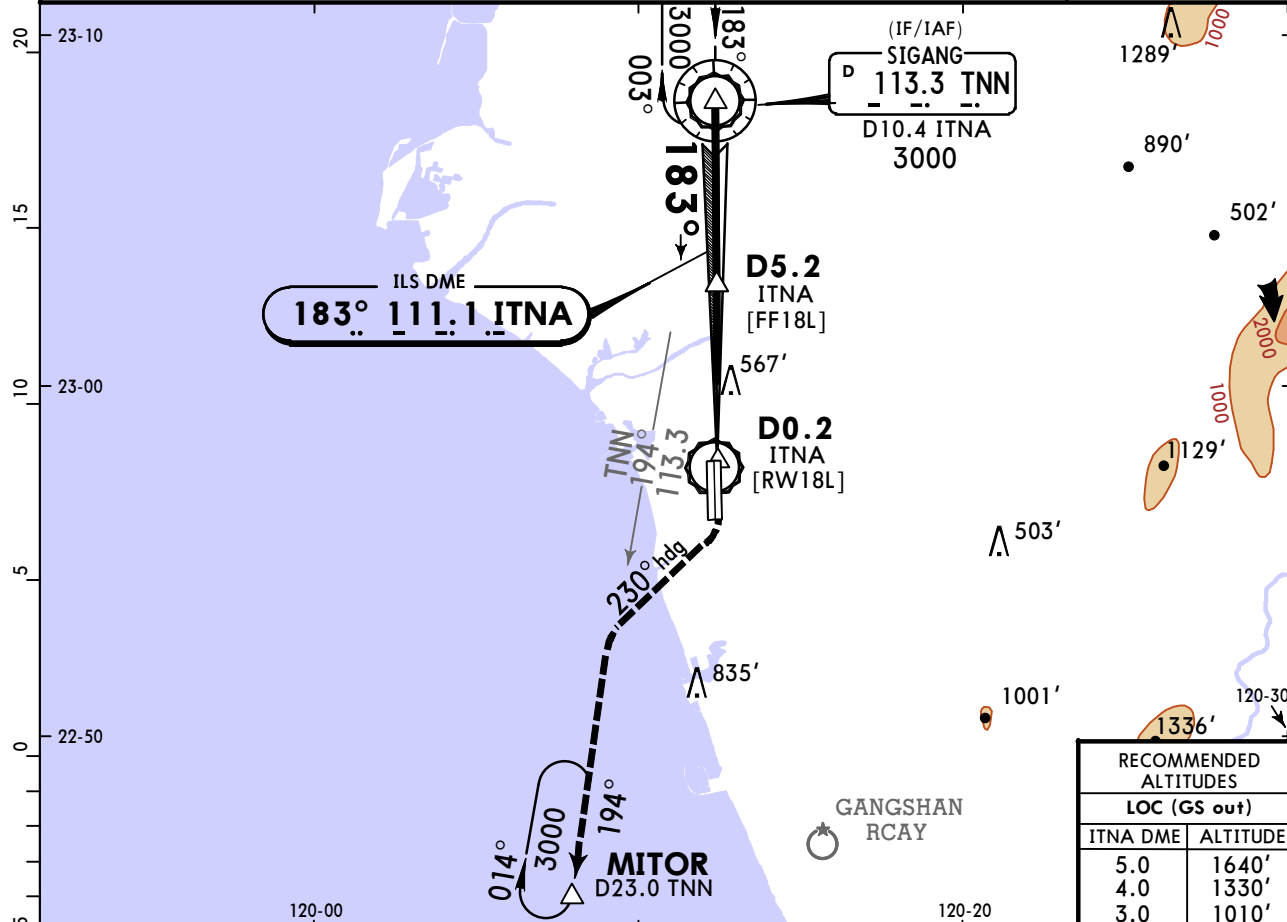
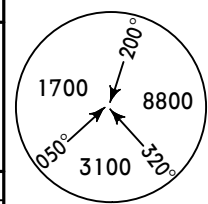


15 APR 22

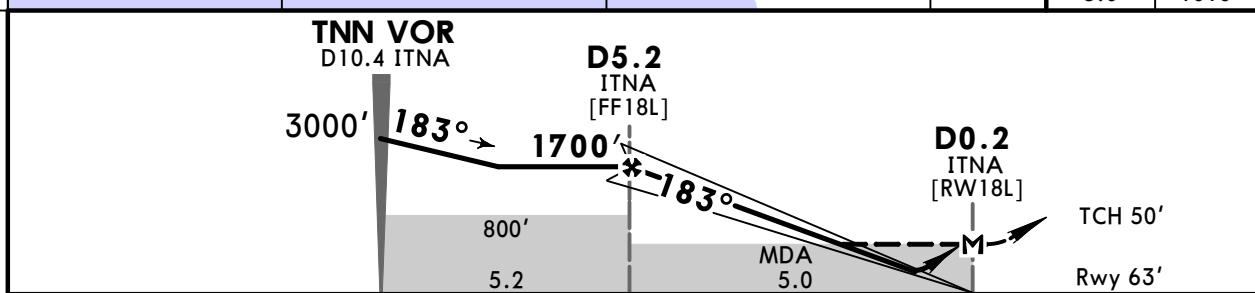
(11-1) Eff 21 Apr

TAINAN, TAIWAN ILS or LOC Rwy 18L

KAOHSIUNG Approach (R) 124.7		*TAINAN Tower 118.4 126.18		*Ground 121.6	
LOC ITNA 111.1	Final Apch Crs 183°	D5.2 ITNA 1700' (1637')	ILS DA(H) Refer to Minimums	Apt Elev 64' Rwy 63'	
MISSED APCH: Climb on Rwy hdg until leaving 800'. Turn RIGHT hdg 230° to track TNN VOR R-194 to MITOR. Climb to 3000' and hold. MAX 200 KT until established on track to MITOR. MISSED APCH WHEN TNN VOR NOT AVBL: Climb on Rwy hdg until leaving 800', turn RIGHT hdg 230°, climb to 3000', expect radar vector.					
Alt Set: hPa Rwy Elev: 2 hPa Trans level: FL130 Trans alt: 11000'					
1. DME required. 2. CAUTION: Rwy 36L/18R is solely for use by Military Aircraft. 3. Traffic from W4/W6 may lose altitude via racetrack/course reversal at TNN VOR and advise ATC in advance.					



RECOMMENDED ALTITUDES	
LOC (GS out)	
ITNA DME	ALTITUDE
5.0	1640'
4.0	1330'
3.0	1010'



Gnd speed-Kts	70	90	100	120	140	160	MALSF PAPI	800'	hdg 230°
GS	3.00°	372	478	531	637	743			
MAP at D0.2 ITNA									

State	STRAIGHT-IN LANDING		CIRCLE-TO-LAND	
	ILS	LOC (GS out)	Not Authorized East of Runway	
DA(H)	A: 263' (200') B: 264' (201')	C: 272' (209') D: 282' (219')	MDA(H) 740' (677')	
	FULL	ALS out	ALS out	ALS out
A	R/V1200m	R/V1200m	V1600m	Max Kts: 100, MDA(H): 860' (796'), V1900m
B			V2700m	135, 860' (796'), V2800m
C		V3100m	180, 960' (896'), V3700m	
D		205, 1230' (1166'), V4600m		

RCNN/TNN TAINAN



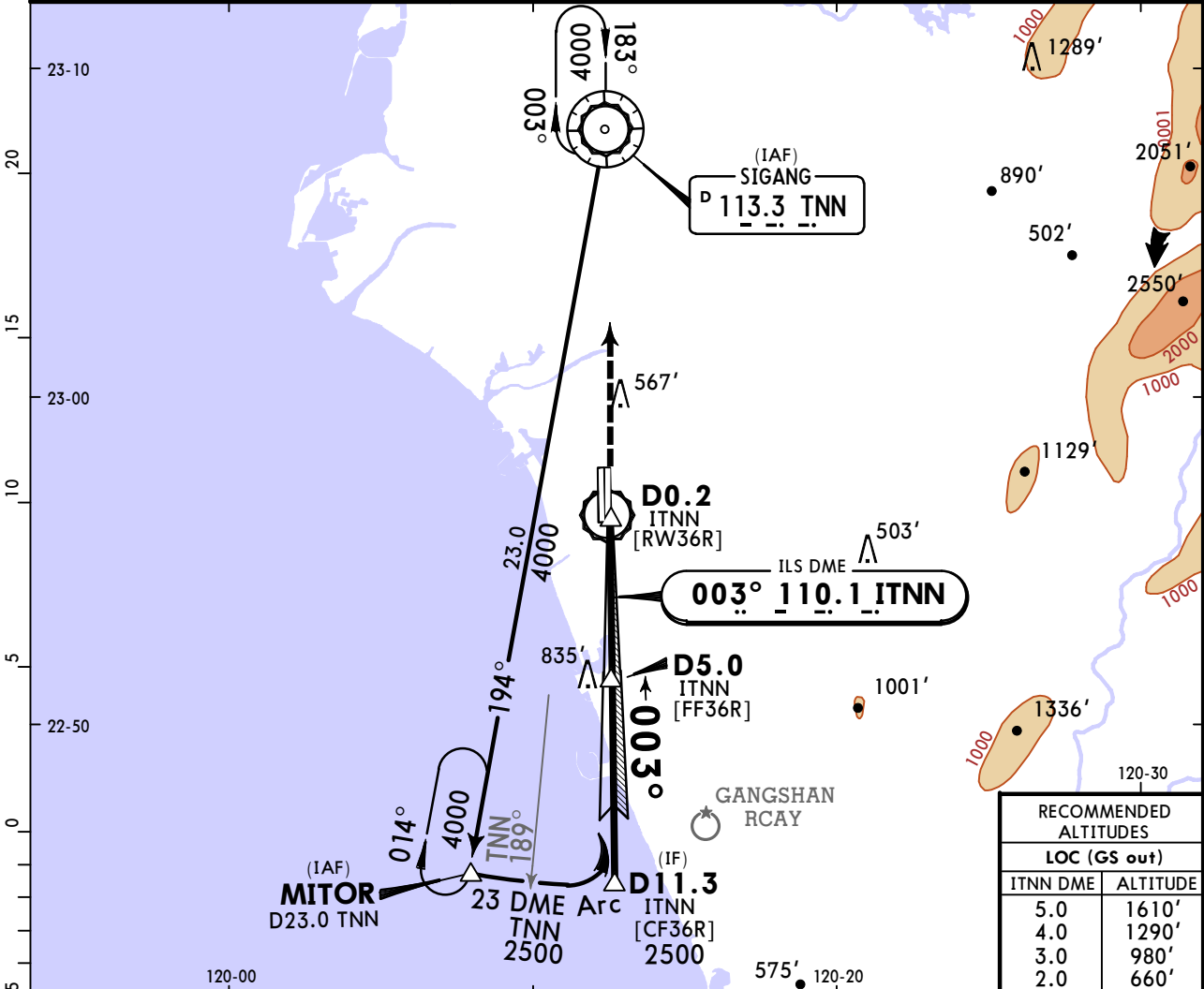
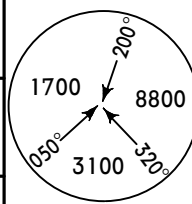
TAINAN, TAIWAN

15 APR 22

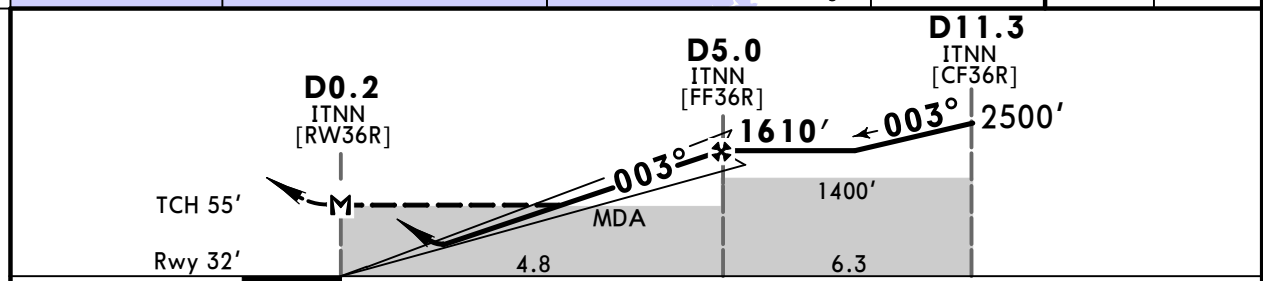
(11-2) Eff 21 Apr

ILS or LOC Rwy 36R

KAOHSIUNG Approach (R) 124.7		*TAINAN Tower 118.4 126.18		*Ground 121.6	
LOC ITNN 110.1	Final Apch Crs 003°	D5.0 ITNN 1610' (1578')	ILS DA(H) Refer to Minimums	Apt Elev 64' Rwy 32'	
MISSED APCH: Climb on Rwy hdg until leaving 700', direct to TNN VOR, climb to 3000' and hold. MISSED APCH WHEN TNN VOR NOT AVBL: Climb on Rwy hdg to 3000', expect radar vector.					
Alt Set: hPa		Rwy Elev: 1 hPa	Trans level: FL130	Trans alt: 11000'	
1. DME required. 2. CAUTION: Rwy 36L/18R is solely for use by Military Aircraft.					



RECOMMENDED ALTITUDES	
LOC (GS out)	
ITNN DME	ALTITUDE
5.0	1610'
4.0	1290'
3.0	980'
2.0	660'



Gnd speed-Kts	70	90	100	120	140	160	MALSR 3000'	PAPI ↑	D →	TNN 113.3
GS	3.00°	372	478	531	637	849				

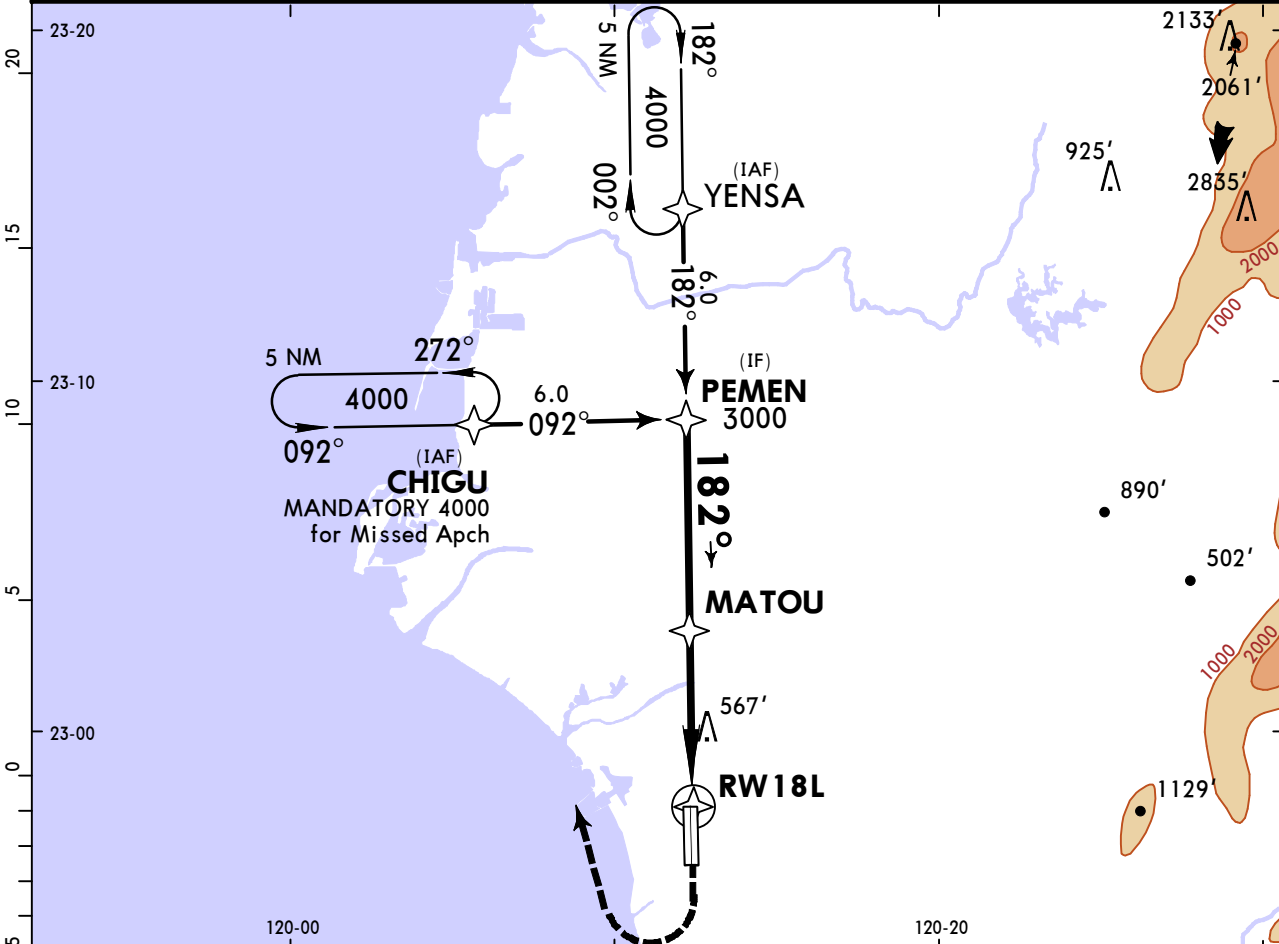
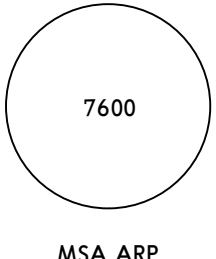
PANS OPS	STRAIGHT-IN LANDING				CIRCLE-TO-LAND	
	ILS		LOC (GS out)		Not Authorized East of Runway	
	DA(H)		MDA(H)			
	A: 244' (212')	C: 265' (233')	A: 244' (212')			
	B: 257' (225')	D: 275' (243')	B: 257' (225')			
	FULL		RAIL or ALS out		RAIL or ALS out	
A	R750m V800m	R/V1200m	R750m	V1600m	100	860' (796') V1900m
B			V800m	V1600m	135	860' (796') V2800m
C			V1900m	V2600m	180	960' (896') V3700m
D			V1300m	V2600m	205	1230' (1166') V4600m

RCNN/TNN TAINAN

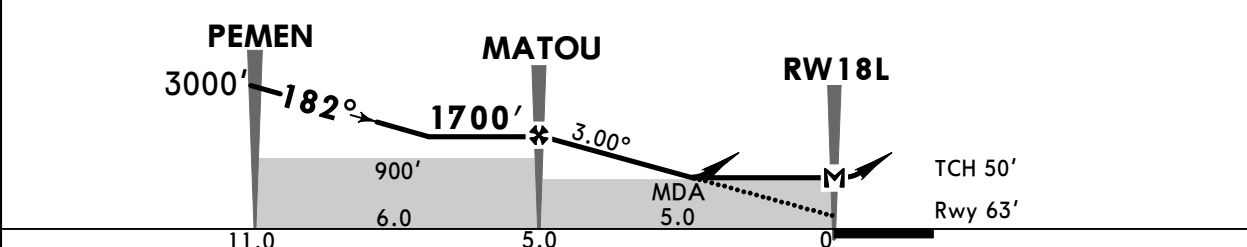
JEPPESEN
15 APR 22 **(12-1)** Eff 21 Apr

TAINAN, TAIWAN RNP Rwy 18L

KAOHSIUNG Approach (R) 124.7		*TAINAN Tower 118.4 126.18		*Ground 121.6
RNAV	Final Apch Crs 182°	MATOU 1700' (1637')	LNAV/VNAV DA(H) 860' (797')	Apt Elev 64' Rwy 63'
MISSED APCH: Climb Rwy hdg to 1000', turn RIGHT direct CHIGU maintain 4000' and hold.				
RNP Apch	Alt Set: hPa	Rwy Elev: 2 hPa	Trans level: FL130	Trans alt: 11000'
1. CAUTION: Rwy 36L/18R is solely for use by Military Aircraft. 2. CAUTION: Obstacles (trees) up to 116' penetrate the visual segment surface. 3. Baro-VNAV not authorized below 0°C. 4. Circling not authorized.				



NM to RW18L	5.0	4.0	3.0	2.4
ALTITUDE	1700'	1382'	1065'	880'



Gnd speed-Kts	70	90	100	120	140	160	MALSF PAPI 1000' ↑ 4000' ↻ RT → CHIGU
Glide Path Angle	3.00°	372	478	531	637	743	
MAP at RW18L							

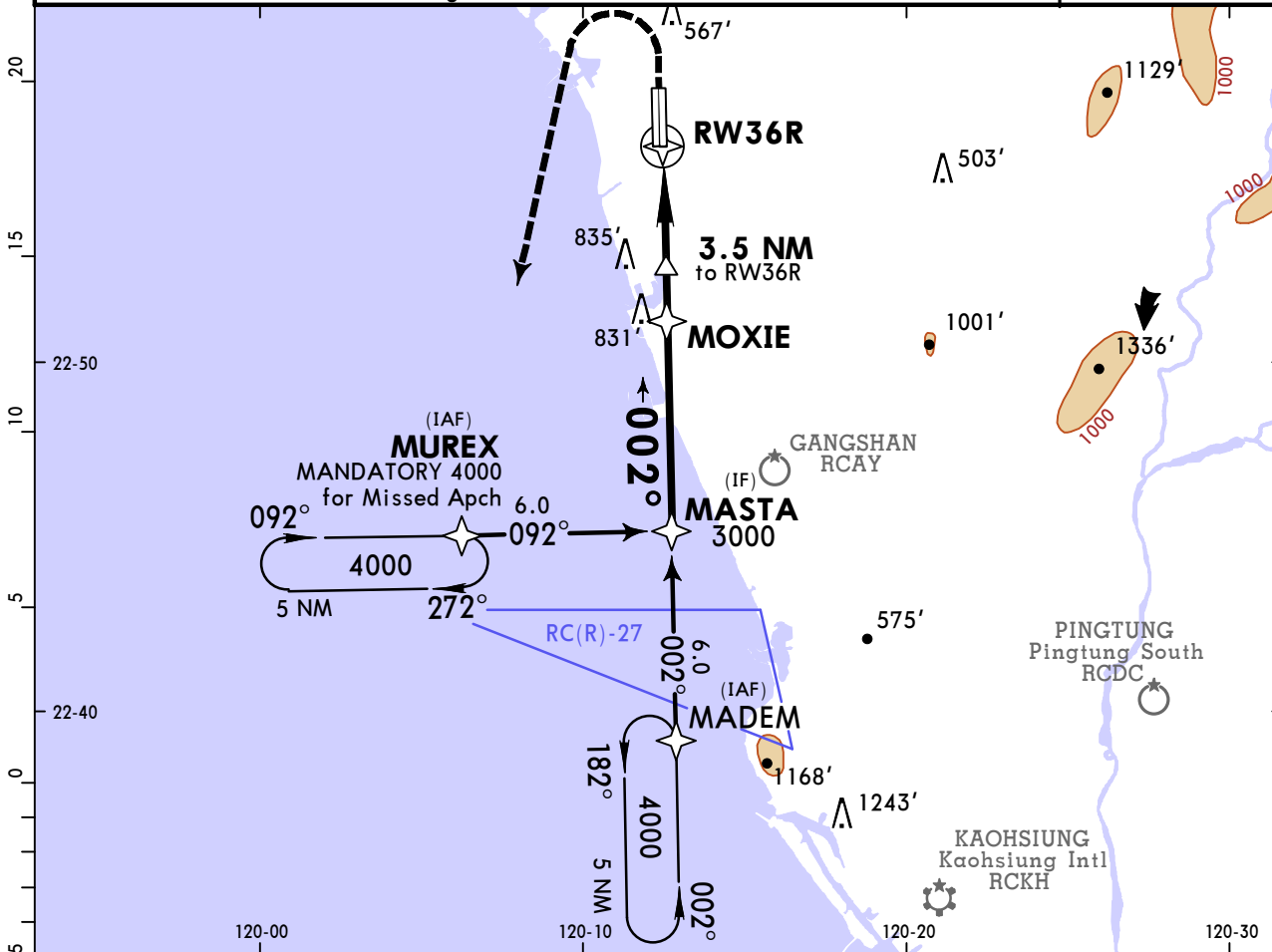
PANS OPS	State STRAIGHT-IN LANDING			
	LNAV/VNAV DA(H) 860' (797')		LNAV MDA(H) 860' (797')	
	ALS out		ALS out	
	A	V3200m	V3600m	V3200m
B				
C	V3200m	V3600m	V3200m	
D				

RCNN/TNN TAINAN

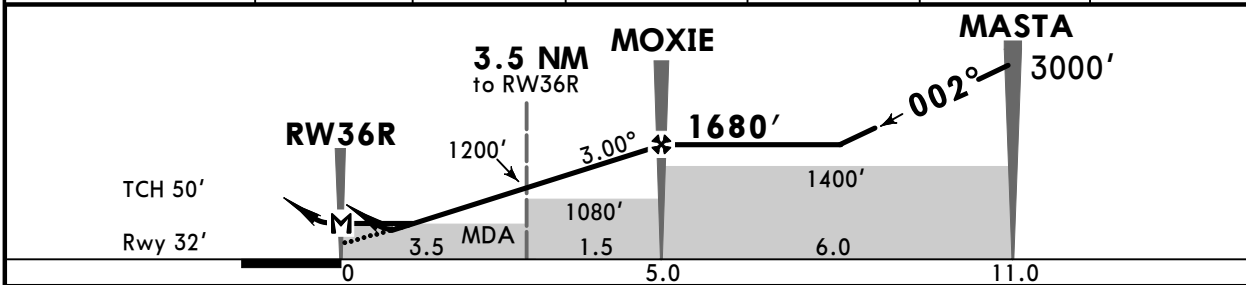
JEPPESSEN
15 APR 22 **(12-2)** Eff 21 Apr

TAINAN, TAIWAN RNP Rwy 36R

KAOHSIUNG Approach (R)		*TAINAN Tower		*Ground	
124.7		118.4		126.18	
121.6					
RNAV	Final Apch Crs 002°	MOXIE 1680' (1648')	LNAV/VNAV DA(H) 280' (248')	Apt Elev 64'	Rwy 32'
MISSED APCH: Climb Rwy hdg to 600', then turn LEFT direct to MUREX, maintain 4000' and hold.					
RNP Apch	Alt Set: hPa	Rwy Elev: 1 hPa	Trans level: FL130	Trans alt: 11000'	
1. CAUTION: Rwy 36L/18R is solely for use by Military Aircraft. 2. Baro-VNAV not authorized below 0°C. 3. Circling not authorized.					



NM to RW36R	1.2	2.0	3.0	3.5	4.0	5.0
ALTITUDE	470'	720'	1040'	1200'	1360'	1680'



Gnd speed-Kts	70	90	100	120	140	160	MALS R	600'	4000'	MUREX
Glide Path Angle	3.00°	372	478	531	637	849	PAPI	↑	← LT	→
MAP at RW36R										

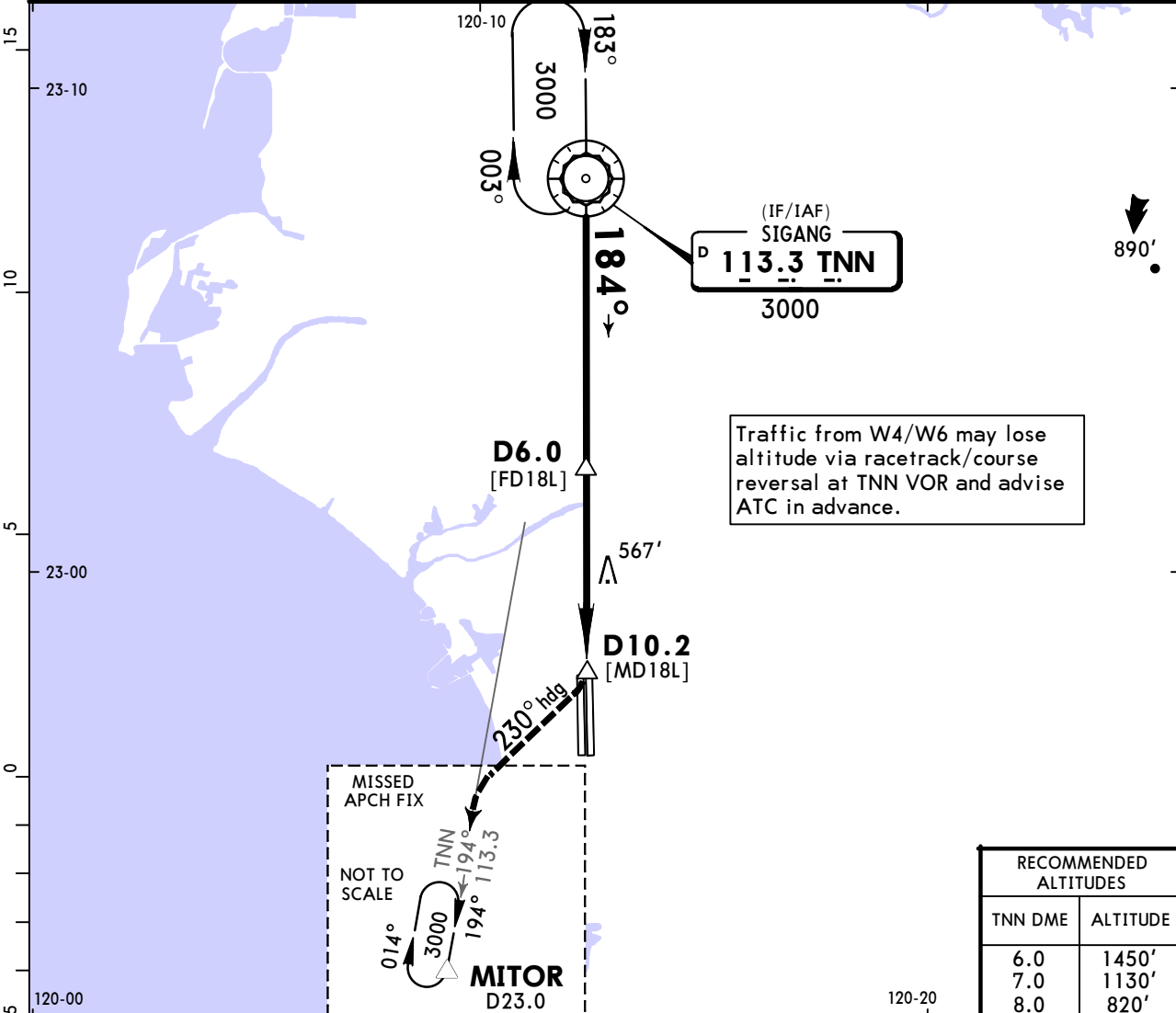
PANS OPS	State				STRAIGHT-IN LANDING			
	LNAV/VNAV DA(H) 280' (248')		LNAV MDA(H) 450' (418')		RAIL or ALS out		RAIL or ALS out	
	R750m V800m		R1200m V1300m		R750m V800m		V1600m	
	R750m V800m		R1200m V1300m		R/V1200m		V1900m	

RCNN/TNN TAINAN

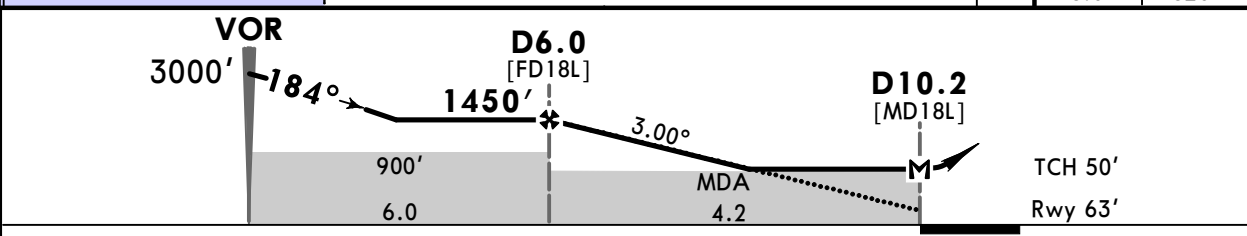
JEPPESEN
15 APR 22 **(13-1)** **Eff 21 Apr**

TAINAN, TAIWAN VOR Rwy 18L

KAOHSIUNG Approach (R) 124.7		*TAINAN Tower 118.4 126.18		*Ground 121.6	
VOR TNN 113.3	Final Apch Crs 184°	D6.0 1450' (1387')	MDA(H) 820' (757')	Apt Elev 64' Rwy 63'	
MISSED APCH: Climb RIGHT turn hdg 230° to track TNN VOR R-194 to MITOR, climb to 3000' and hold.				<p>MSA TNN VOR</p>	
Alt Set: hPa		Rwy Elev: 2 hPa	Trans level: FL130		Trans alt: 11000'
1. DME required. 2. CAUTION: Rwy 36L/18R is solely for use by Military Aircraft.					



RECOMMENDED ALTITUDES	
TNN DME	ALTITUDE
6.0	1450'
7.0	1130'
8.0	820'



Gnd speed-Kts	70	90	100	120	140	160		3000' RT	230° hdg	TNN 113.3 R-194	MITOR
Descent Angle	3.00°	372	478	531	637	743					

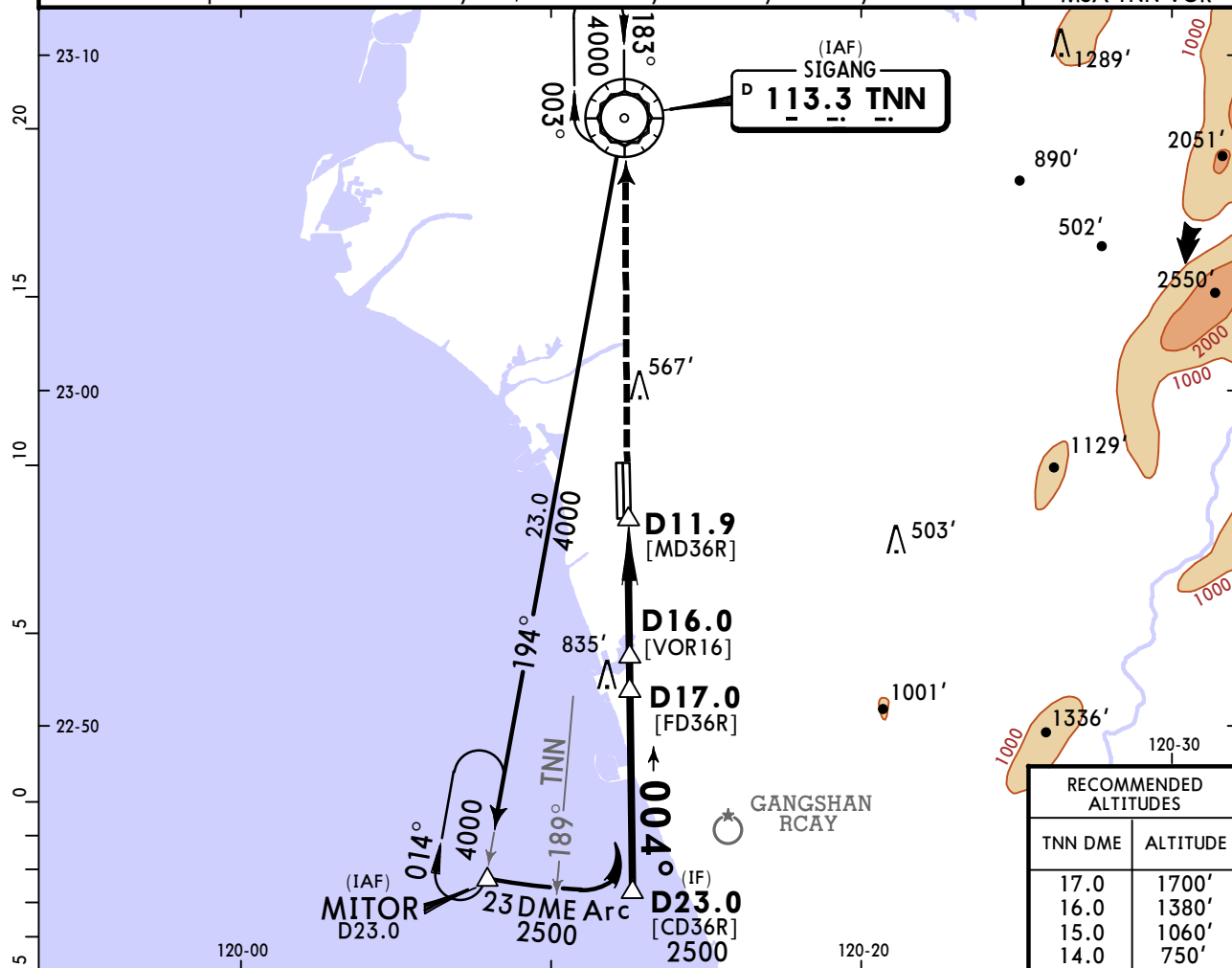
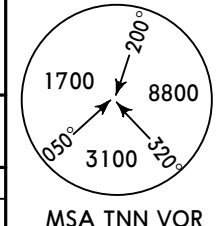
PANS OPS	STRAIGHT-IN LANDING		CIRCLE-TO-LAND	
	MDA(H) 820' (757')		Not Authorized East of Runway	
A	R/V1200m	ALS out V1600m	Max Kts. 100	MDA(H) 860' (796') V1900m
B	V1600m	V2000m	135	860' (796') V2800m
C	V3000m	V3500m	180	960' (896') V3700m
D			205	1230' (1166') V4600m

RCNN/TNN TAINAN

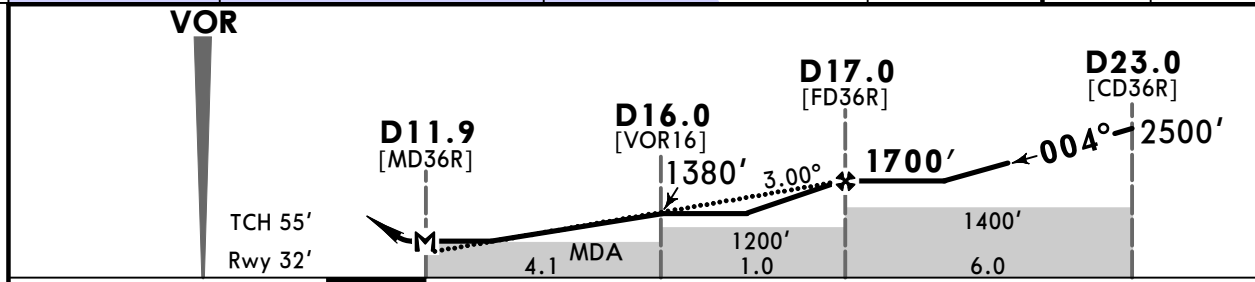
JEPPESEN
15 APR 22 **(13-2)** Eff 21 Apr

TAINAN, TAIWAN VOR Rwy 36R

KAOHSIUNG Approach (R) 124.7		*TAINAN Tower 118.4 126.18		*Ground 121.6
VOR TNN 113.3	Final Apch Crs 004°	D17.0 1700' (1668')	MDA(H) 600' (568')	Apt Elev 64' Rwy 32'
MISSED APCH: Climb direct to TNN VOR, climb to 3000' and hold.				
Alt Set: hPa		Rwy Elev: 1 hPa	Trans level: FL130	Trans alt: 11000'
1. DME required. 2. CAUTION: Rwy 36L/18R is solely for use by Military Aircraft.				



RECOMMENDED ALTITUDES	
TNN DME	ALTITUDE
17.0	1700'
16.0	1380'
15.0	1060'
14.0	750'



Gnd speed-Kts	70	90	100	120	140	160	MALSR 3000'	PAPI ↑	D →	TNN 113.3
Descent Angle	3.00°	372	478	531	637	743				

PANS OPS	STRAIGHT-IN LANDING		CIRCLE-TO-LAND	
	MDA(H) 600' (568')		Not Authorized East of Runway	
	RAIL or ALS out		Max Kts	MDA(H)
A	R750m	V1600m	100	860' (796') V1900m
B	V800m		135	860' (796') V2800m
C	V1900m	V2600m	180	960' (896') V3700m
D			205	1230' (1166') V4600m



Chart changes since cycle 15-2023

ADD = added chart, REV = revised chart, DEL = deleted chart.

ACT	PROCEDURE IDENT	INDEX	REV DATE	EFF DATE
TAINAN, (TAINAN - RCNN)				

TERMINAL CHART CHANGE NOTICES

No Chart Change Notices for Airport RCNN