

## List of pages in this Trip Kit

Trip Kit Index

Airport Information For RCWA

Terminal Charts For RCWA

Revision Letter For Cycle 16-2023

Change Notices

Notebook

## General Information

Location: WANG-AN TWN  
ICAO: RCWA  
Lat/Long: N23° 22.15', E119° 30.22'  
Elevation: 114 ft

Airport Use: Public  
Daylight Savings: Not Observed  
UTC Conversion: -8:00 = UTC  
Magnetic Variation: 4.0° W

Customs: No  
Airport Type: VFR  
Landing Fee: No  
Control Tower: Yes  
Jet Start Unit: No  
LLWS Alert: No  
Beacon: Yes

Sunrise: 2150 Z  
Sunset: 1002 Z

## Runway Information

Runway: 02  
Length x Width: 2697 ft x 75 ft  
Surface Type: concrete  
TDZ-Elev: 101 ft  
Lighting: Edge, REIL

Runway: 20  
Length x Width: 2697 ft x 75 ft  
Surface Type: concrete  
TDZ-Elev: 100 ft  
Lighting: Edge, REIL

## Communication Information

Wang-An Tower: 118.900  
Kaohsiung Approach: 129.900  
Kaohsiung Approach: 128.100

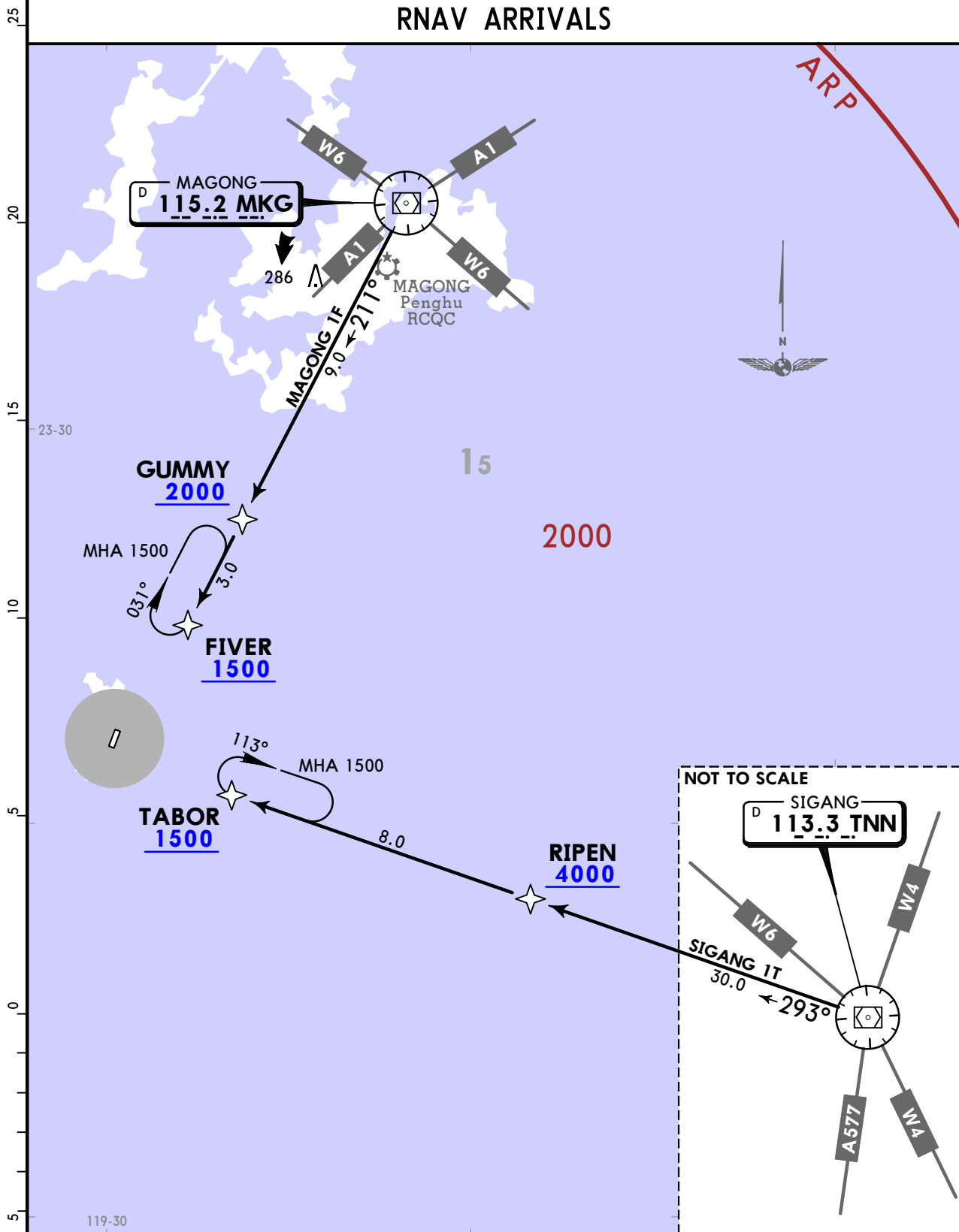
RCWA  
WANG-AN

JEPPESEN  
19 MAR 21 10-2 Eff 25 Mar

WANG-AN, TAIWAN  
RNAV STAR

Apt Elev 114  
Alt Set: hPa Trans level: FL130  
1. RNAV 1.  
2. RADAR monitoring required.  
3. Critical DME and DME gap not surveyed.  
4. MAGONG 1F: If unable to MAINTAIN VFR before FIVER, MAINTAIN 1500 and hold at FIVER.  
5. SIGANG 1T: If unable to MAINTAIN VFR before TABOR, MAINTAIN 1500 and hold at TABOR.

MAGONG 1F (MA1F)  
SIGANG 1T (SA1T)  
RNAV ARRIVALS



STAR	ROUTING
MAGONG 1F	From MKG VOR to GUMMY, then FIVER.
SIGANG 1T	From TNN VOR to RIPEN, then TABOR.

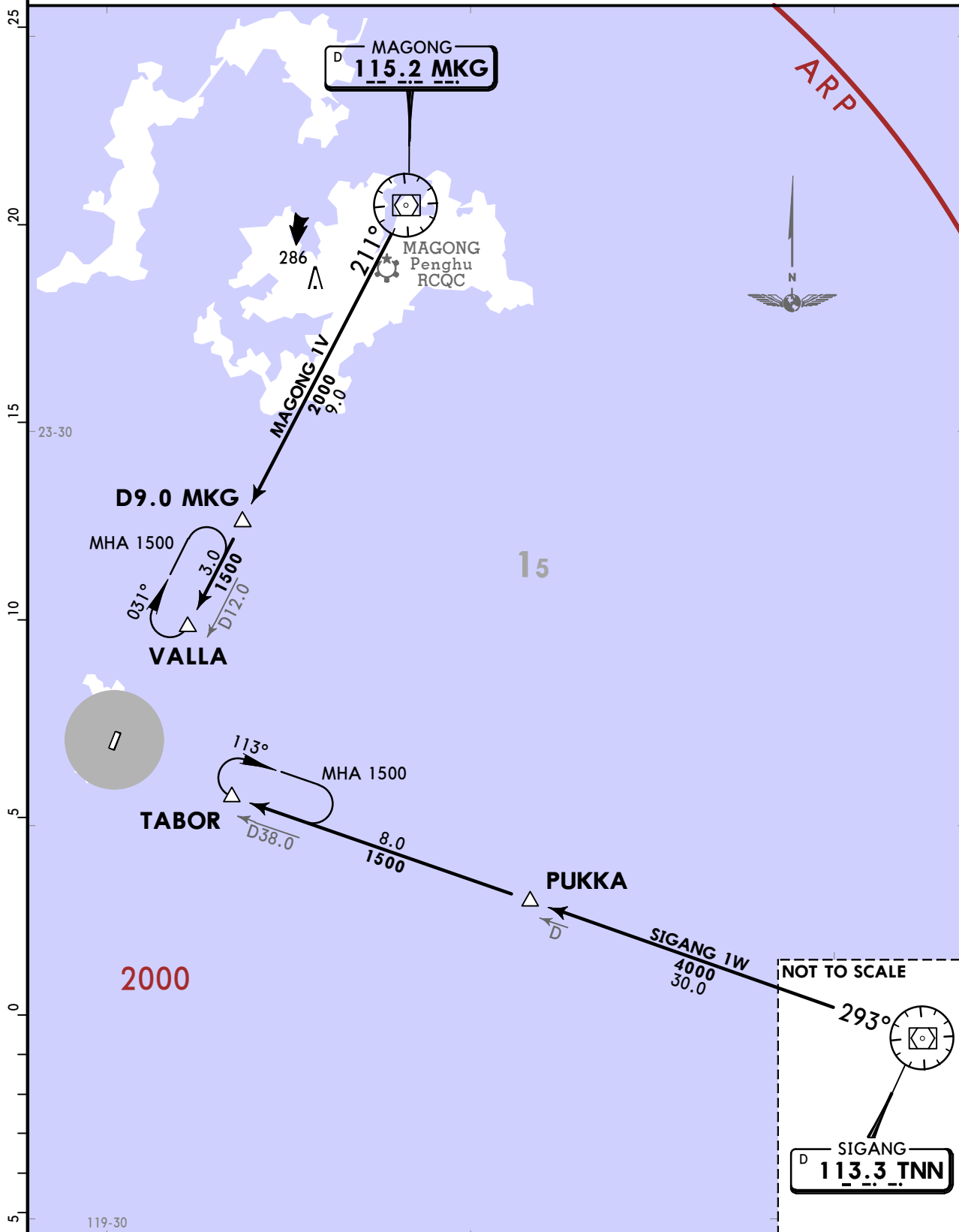
**RCWA**  
**WANG-AN**

**JEPPESEN**  
19 MAR 21 **(10-2A)** Eff 25 Mar

**WANG-AN, TAIWAN**  
**STAR**

Apt Elev <b>114</b>	Alt Set: hPa Trans level: FL130 1. MAGONG 1V: If unable to MAINTAIN VFR before VALLA, MAINTAIN 1500 and hold at VALLA. 2. SIGANG 1W: If unable to MAINTAIN VFR before TABOR, MAINTAIN 1500 and hold at TABOR.
------------------------	---

**MAGONG 1V (MKG 1V)**  
**SIGANG 1W (TNN 1W)**  
**ARRIVALS**

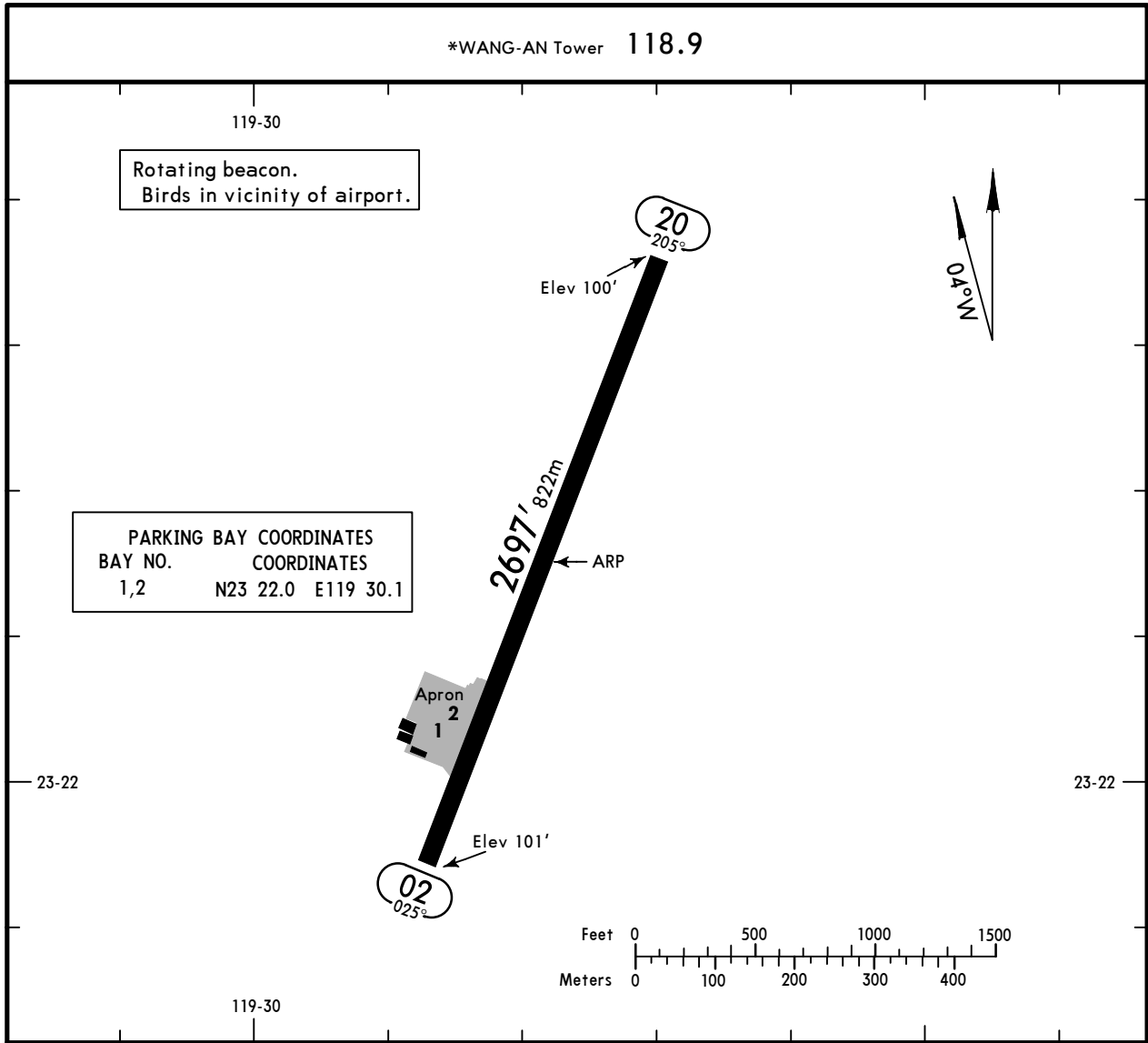


STAR	ROUTING
<b>MAGONG 1V</b>	Depart MKG VOR, track MKG R211 to VALLA.
<b>SIGANG 1W</b>	Depart TNN VOR, track TNN R293 to PUKKA, then TABOR.

**RCWA**  
 Apt Elev **114'**  
 N23 22.2 E119 30.2

**JEPPESEN**  
 8 JUL 22 **(10-9) Eff 14 Jul**

**WANG-AN, TAIWAN**  
**WANG-AN**



**ADDITIONAL RUNWAY INFORMATION**

RWY				USABLE LENGTHS		TAKE-OFF	WIDTH
				Threshold	Glide Slope		
02	HIRL (60m)	REIL	APAPI-R (angle 3.0°)				75'
20	HIRL (60m)	REIL	APAPI-L (angle 3.0°)				23m

Std		TAKE-OFF			
RL & RCLM	RL	RL or RCLM	Adequate Vis Ref		
DAY	NIGHT	DAY	DAY	NIGHT	
R300m		R400m	R/V500m	NA	

### Chart changes since cycle 15-2023

ADD = added chart, REV = revised chart, DEL = deleted chart.

ACT	PROCEDURE IDENT	INDEX	REV DATE	EFF DATE
<b>WANG-AN, (WANG-AN - RCWA)</b>				

## TERMINAL CHART CHANGE NOTICES

No Chart Change Notices for Airport RCWA