

## List of pages in this Trip Kit

Trip Kit Index

Airport Information For RCYU

Terminal Charts For RCYU

Revision Letter For Cycle 16-2023

Change Notices

Notebook

## General Information

Location: HUALIEN TWN  
ICAO/IATA: RCYU / HUN  
Lat/Long: N24° 01.40', E121° 36.60'  
Elevation: 51 ft

Airport Use: Joint-Use  
Daylight Savings: Not Observed  
UTC Conversion: -8:00 = UTC  
Magnetic Variation: 4.0° W

Fuel Types: Jet A-1  
Customs: Restricted  
Airport Type: IFR  
Landing Fee: No  
Control Tower: Yes  
Jet Start Unit: No  
LLWS Alert: No  
Beacon: Yes

Sunrise: 2141 Z  
Sunset: 0953 Z

## Runway Information

Runway: 03  
Length x Width: 9026 ft x 148 ft  
Surface Type: concrete  
TDZ-Elev: 44 ft  
Lighting: Edge, ALS, REIL  
Stopway: 755 ft

Runway: 21  
Length x Width: 9026 ft x 148 ft  
Surface Type: concrete  
TDZ-Elev: 51 ft  
Lighting: Edge, ALS  
Stopway: 755 ft

## Communication Information

Hualien Tower: 118.100  
Hualien Tower: 126.180  
Hualien Tower: 23.660 Military  
Hualien Ground: 121.900  
Hualien Clearance Delivery: 121.900  
Taipei Approach: 119.100 Secondary  
Taipei Approach: 124.000

Taipei Approach: 135.800

# RCYU/HUN HUALIEN

**JEPPESEN**  
12 APR 13 (10-1R)

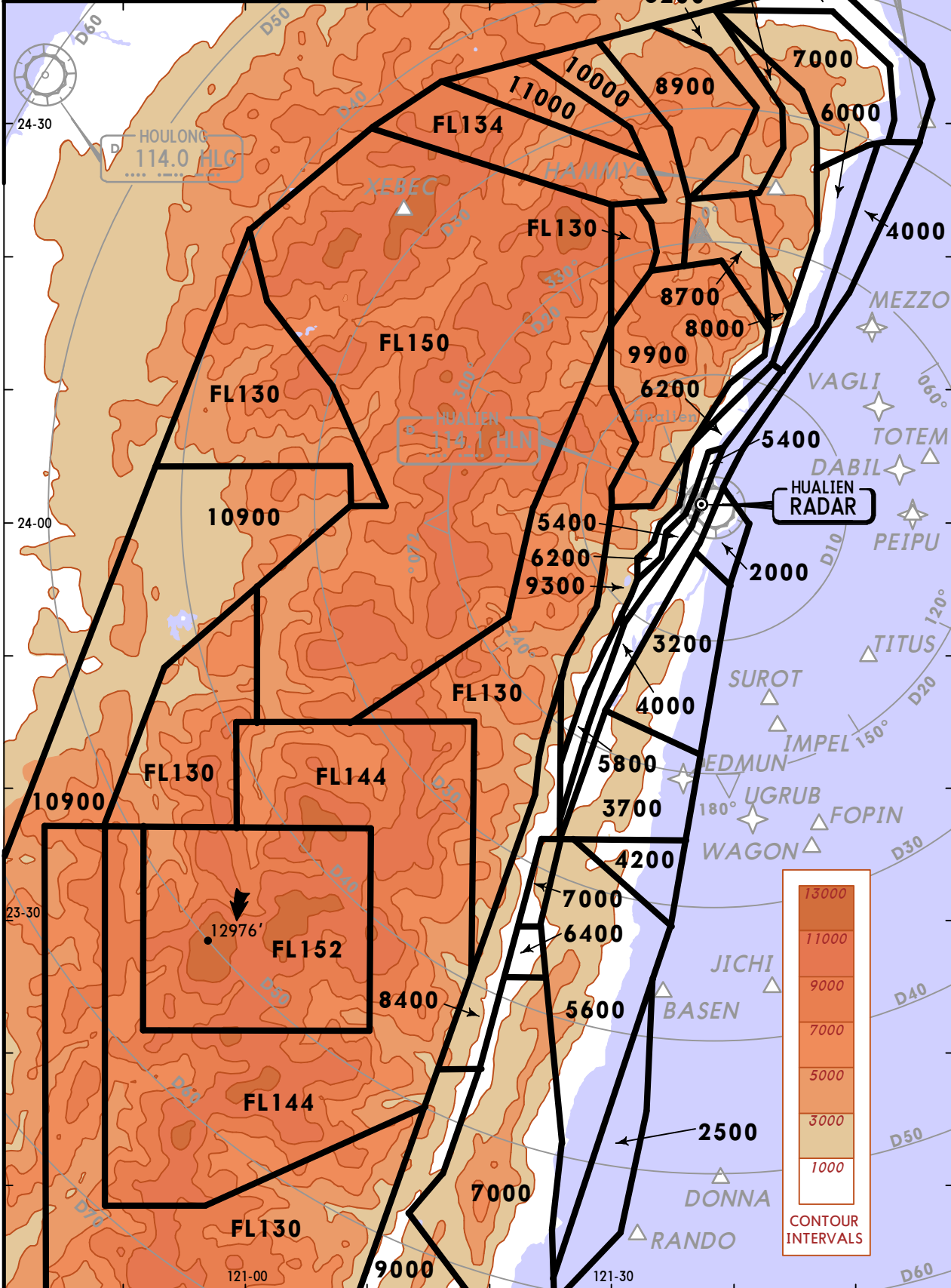
# HUALIEN, TAIWAN RADAR MINIMUM ALTITUDES

TAIPEI Approach (R)	Apt Elev	Alt Set: hPa	Trans level: FL 130	Trans alt: 11000'
124.0 119.1	51'	1. This chart may only be used for pilots to cross-check altitudes assigned while under RADAR CONTROL.		

Minimum altitudes are calculated taking into account of minimum clearance above terrain/obstacles. Radar control service cannot be provided to aircraft below the applicable minimum. However, aircraft at designated altitude in relevant sector is not assured of radar contact.

**LOSS OF COMMUNICATION**

1. SQUAWK 7600 immediately, and
2. Follow "Radio Communication Failure Procedures." (see Jeppesen text pages / Emergency / State Rules and Procedure - Far East / Taiwan -).



**RCYU/HUN**  
**HUALIEN**

**JEPPESEN**  
4 FEB 22 (10-2)

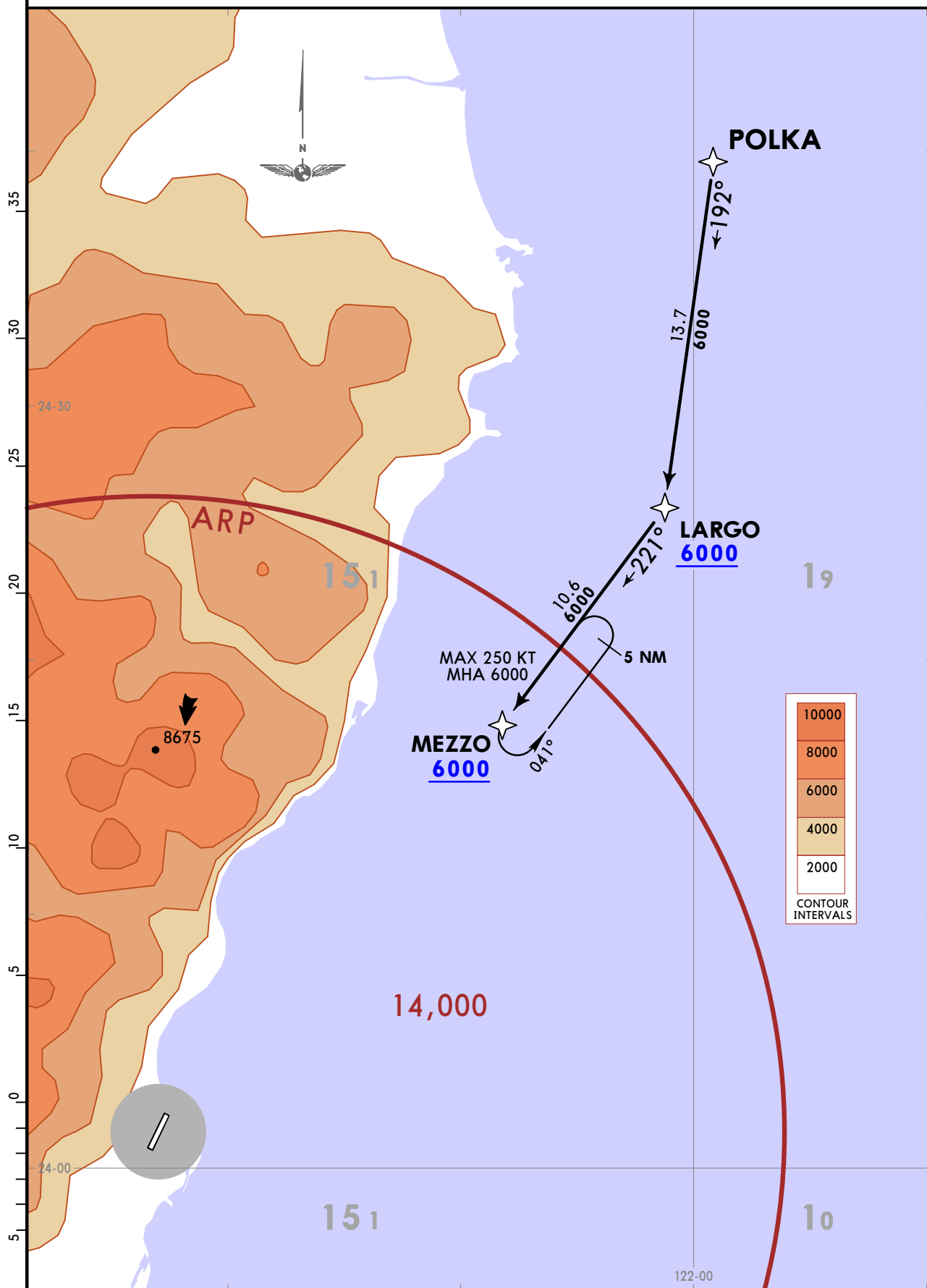
**HUALIEN, TAIWAN**  
**RNAV STAR**

Apt Elev  
**51**

Alt Set: hPa Trans level: FL130

RNAV 1 GNSS required

**POLKA 1 RNAV ARRIVAL**  
**[POLKA1]**



**ROUTING**

From POLKA to LARGO, then MEZZO.

**RCYU/HUN**  
HUALIEN

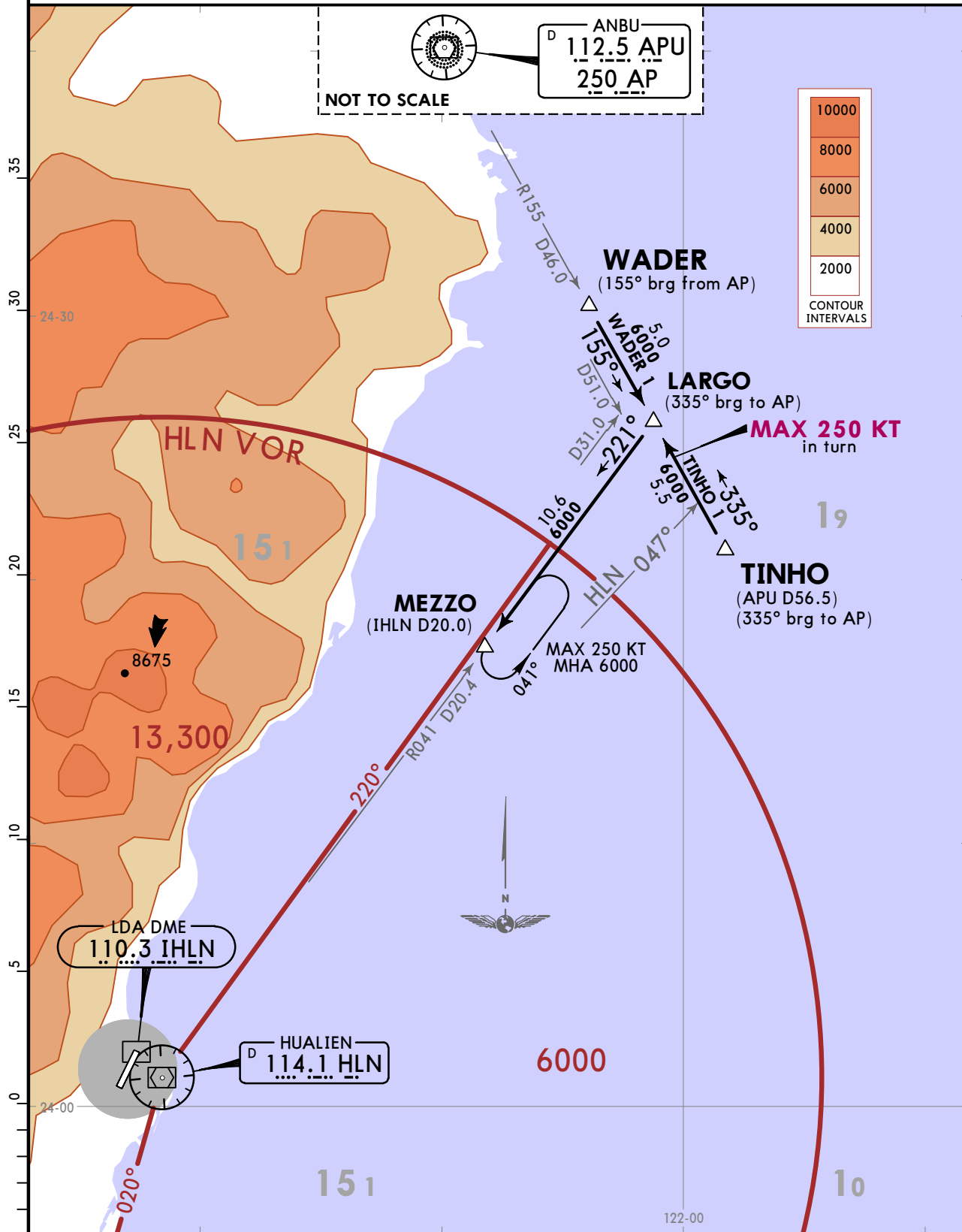
**JEPPESEN**  
4 FEB 22 (10-2A)

**HUALIEN, TAIWAN**  
**STAR**

Apt Elev  
51

Alt Set: hPa Trans level: FL130

**TINHO 1 [TINHO1]  
WADER 1 [WADER1]  
ARRIVALS**

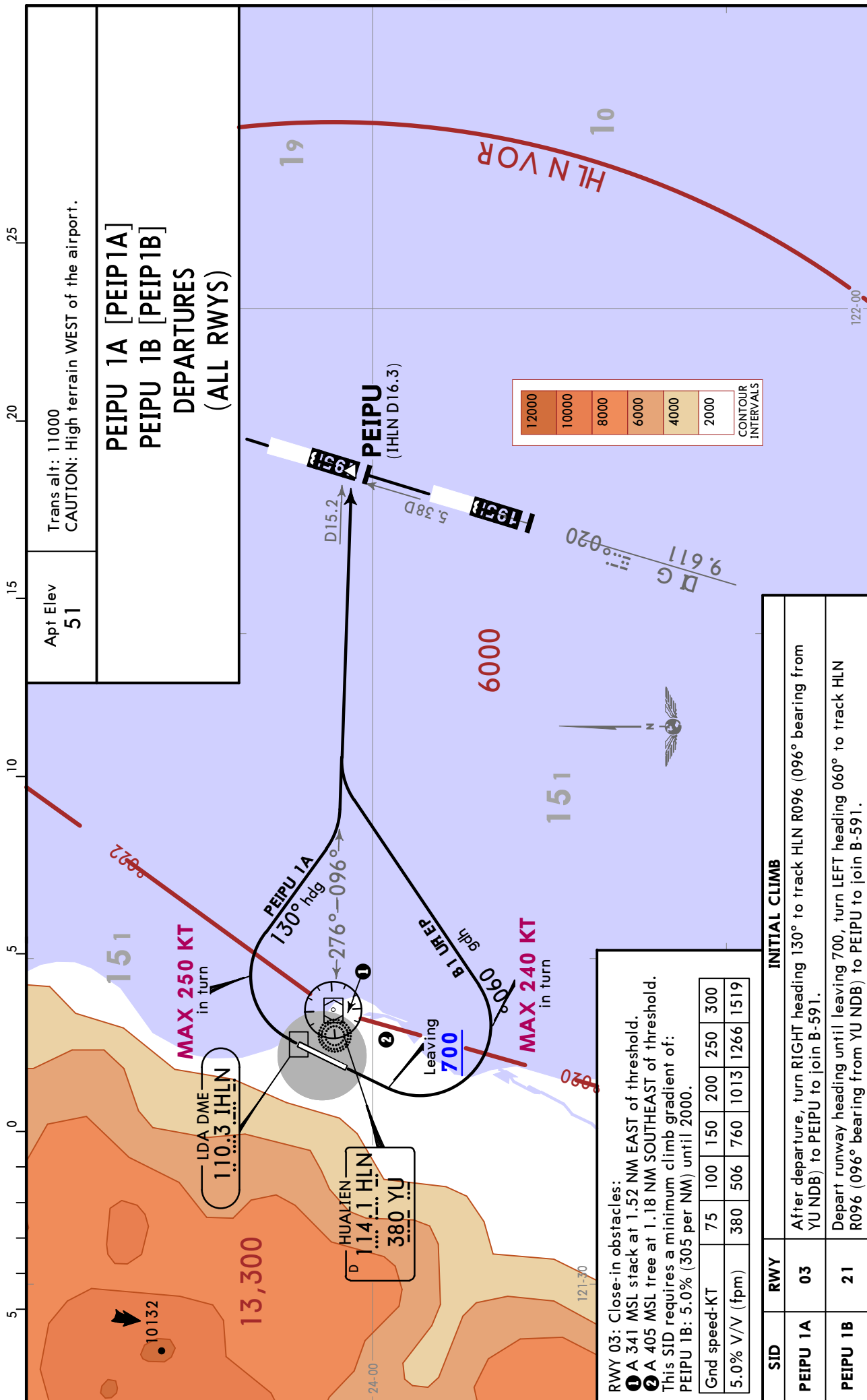


STAR	ROUTING
<b>TINHO 1</b>	Depart TINHO, track APU R155 (335° bearing to AP NDB) to LARGO, then turn LEFT to track HLN R041 to MEZZO, MAX 250 KT in turn.
<b>WADER 1</b>	Depart WADER, track APU R155 (155° bearing from AP NDB) to LARGO, then turn RIGHT to track HLN R041 to MEZZO.

RCYU/HUN  
HUALIEN

JEPPESSEN  
4 FEB 22 10-3

HUALIEN, TAIWAN  
SID



Trans alt: 11000  
CAUTION: High terrain WEST of the airport.

**PEIPU 1A [PEIP1A]  
PEIPU 1B [PEIP1B]  
DEPARTURES  
(ALL RWYS)**

Apt Elev  
**51**

12000
10000
8000
6000
4000
2000

CONTOUR INTERVALS

**RWY 03: Close-in obstacles:**  
 ① A 341 MSL stack at 1.52 NM EAST of threshold.  
 ② A 405 MSL tree at 1.18 NM SOUTHEAST of threshold.  
 This SID requires a minimum climb gradient of:  
 PEIPU 1B: 5.0% (305 per NM) until 2000.

Gnd speed-KT	75	100	150	200	250	300
5.0% V/V (fpm)	380	506	760	1013	1266	1519

SID	RWY	INITIAL CLIMB
PEIPU 1A	03	After departure, turn RIGHT heading 130° to track HLN R096 (096° bearing from YU NDB) to PEIPU to join B-591.
PEIPU 1B	21	Depart runway heading until leaving 700, turn LEFT heading 060° to track HLN R096 (096° bearing from YU NDB) to PEIPU to join B-591.

RCYU/HUN  
HUALIEN

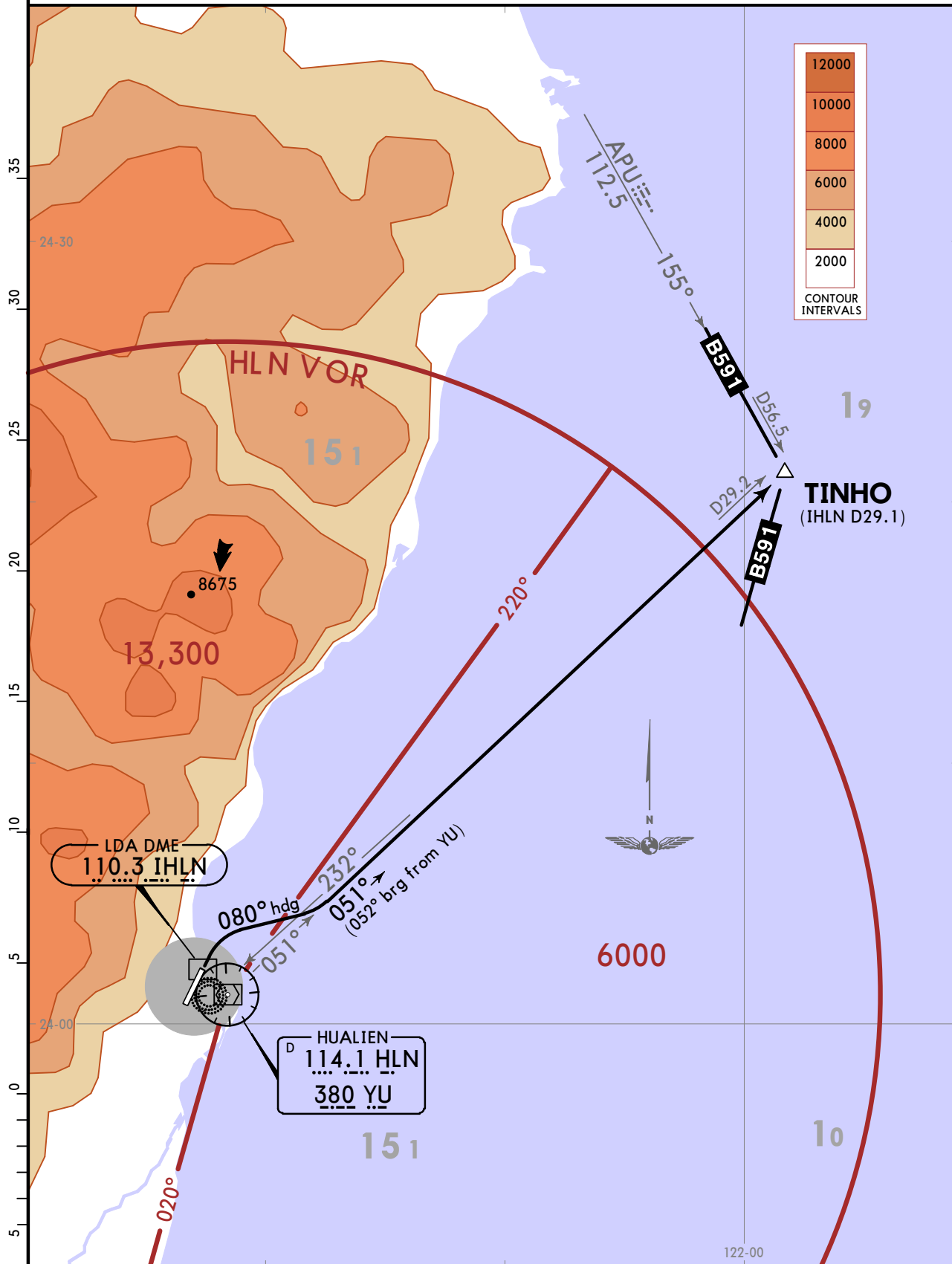
JEPPESEN  
4 FEB 22 (10-3A)

HUALIEN, TAIWAN  
SID

Apt Elev  
51

Trans alt: 11000  
CAUTION: High terrain WEST of the airport.

TINHO 1G DEPARTURE  
[TINH1G]  
(RWY 03)



INITIAL CLIMB

After departure, turn RIGHT heading 080° to track HLN R051 (052° bearing from YU NDB) to TINHO to join B-591.

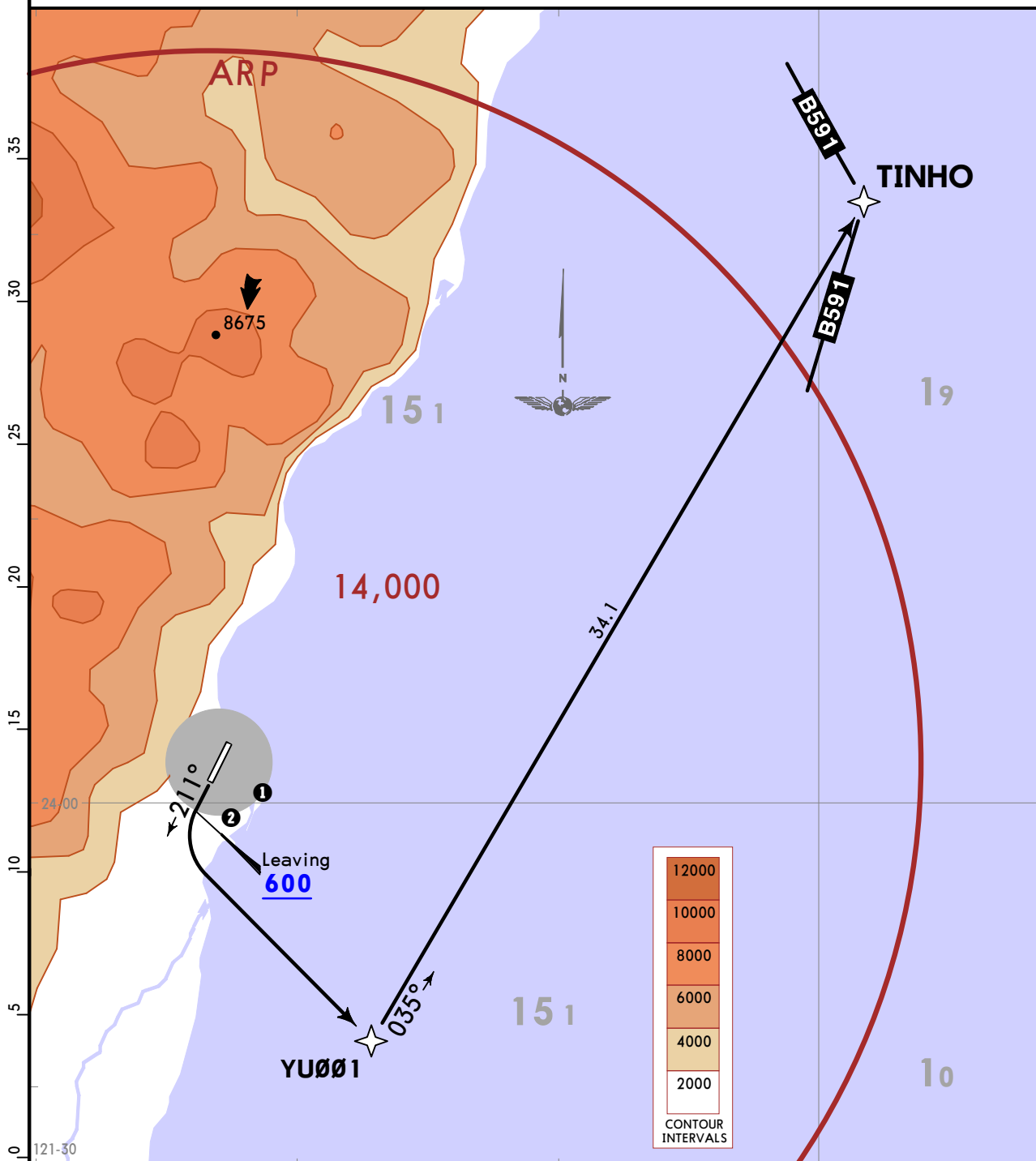
RCYU/HUN  
HUALIEN

JEPPESEN  
4 FEB 22 (10-3B)

HUALIEN, TAIWAN  
RNAV SID

Apt Elev 51	RNAV 1	GNSS required	Trans alt: 11000
	1. CAUTION: High terrain WEST of the airport. 2. No early turn before DER.		

TINHO 1H RNAV DEPARTURE  
[TINH1H]  
(RWY 21)



RWY 03: Close-in obstacles:  
 ① A 341 MSL stack at 1.52 NM EAST of threshold.  
 ② A 405 MSL tree at 1.18 NM SOUTHEAST of threshold.  
 This SID requires a minimum climb gradient of:  
 3.9% (237 per NM) until YU001.

Gnd speed-KT	75	100	150	200	250	300
3.9% V/V (fpm)	296	395	592	790	987	1185

INITIAL CLIMB

Depart runway heading until 600, then turn LEFT direct to YU001 to TINHO to join B-591.

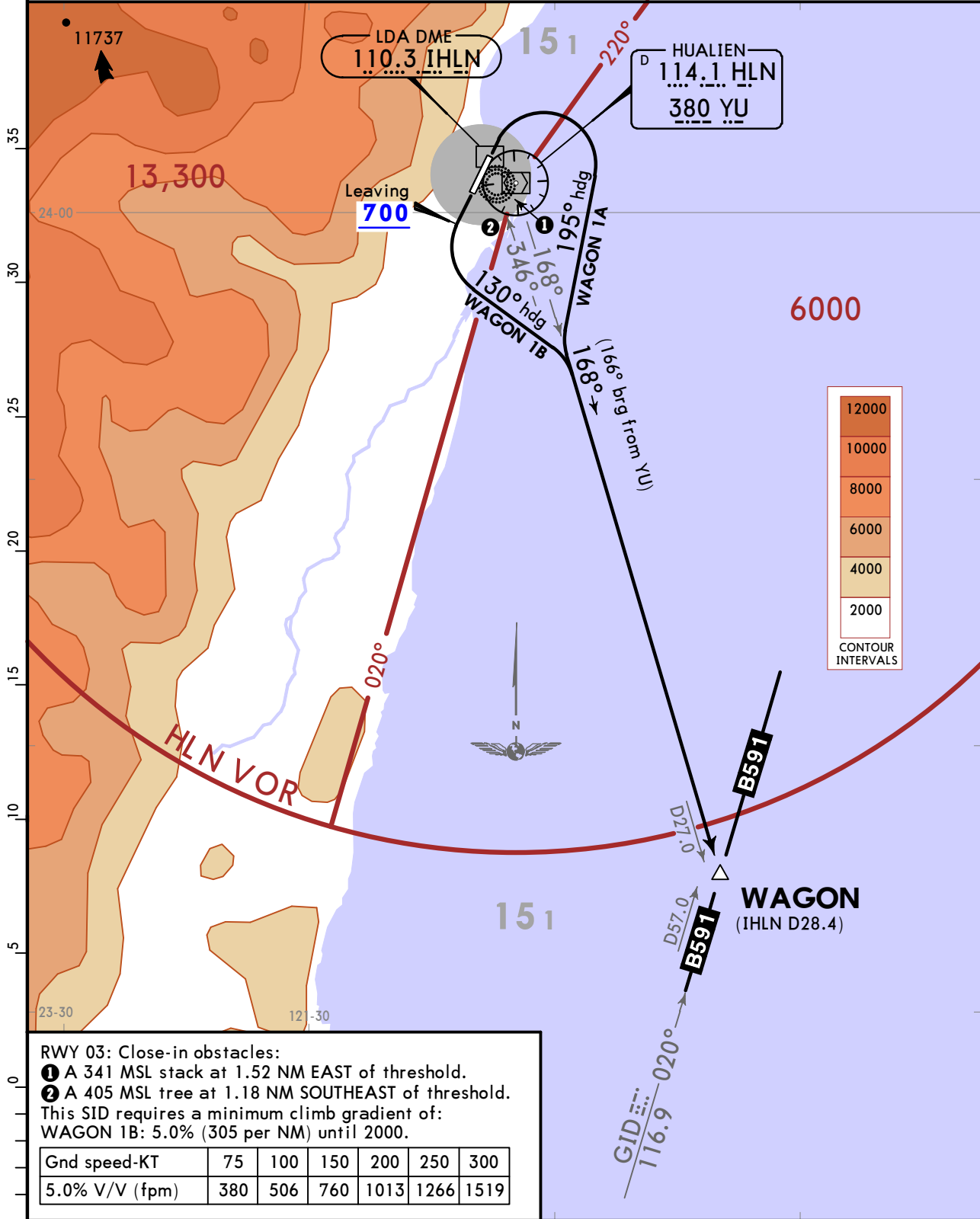
**RCYU/HUN**  
HUALIEN

**JEPPESSEN**  
4 FEB 22 (10-3C)

**HUALIEN, TAIWAN**  
**SID**

Apt Elev <b>51</b>	Trans alt: 11000 CAUTION: High terrain WEST of the airport.
-----------------------	--

**WAGON 1A [WAGO1A]  
WAGON 1B [WAGO1B]  
DEPARTURES  
(ALL RWYS)**



**RWY 03: Close-in obstacles:**

- ① A 341 MSL stack at 1.52 NM EAST of threshold.
- ② A 405 MSL tree at 1.18 NM SOUTHEAST of threshold.

This SID requires a minimum climb gradient of:  
**WAGON 1B: 5.0% (305 per NM) until 2000.**

Gnd speed-KT	75	100	150	200	250	300
5.0% V/V (fpm)	380	506	760	1013	1266	1519

SID	RWY	INITIAL CLIMB
<b>WAGON 1A</b>	<b>03</b>	After departure, turn RIGHT heading 195° to track HLN R168 (166° bearing from YU NDB) to WAGON to join B-591.
<b>WAGON 1B</b>	<b>21</b>	Departure runway heading until leaving 700, turn LEFT heading 130° to track HLN R168 (166° bearing from YU NDB) to WAGON to join B-591.

**RCYU/HUN**

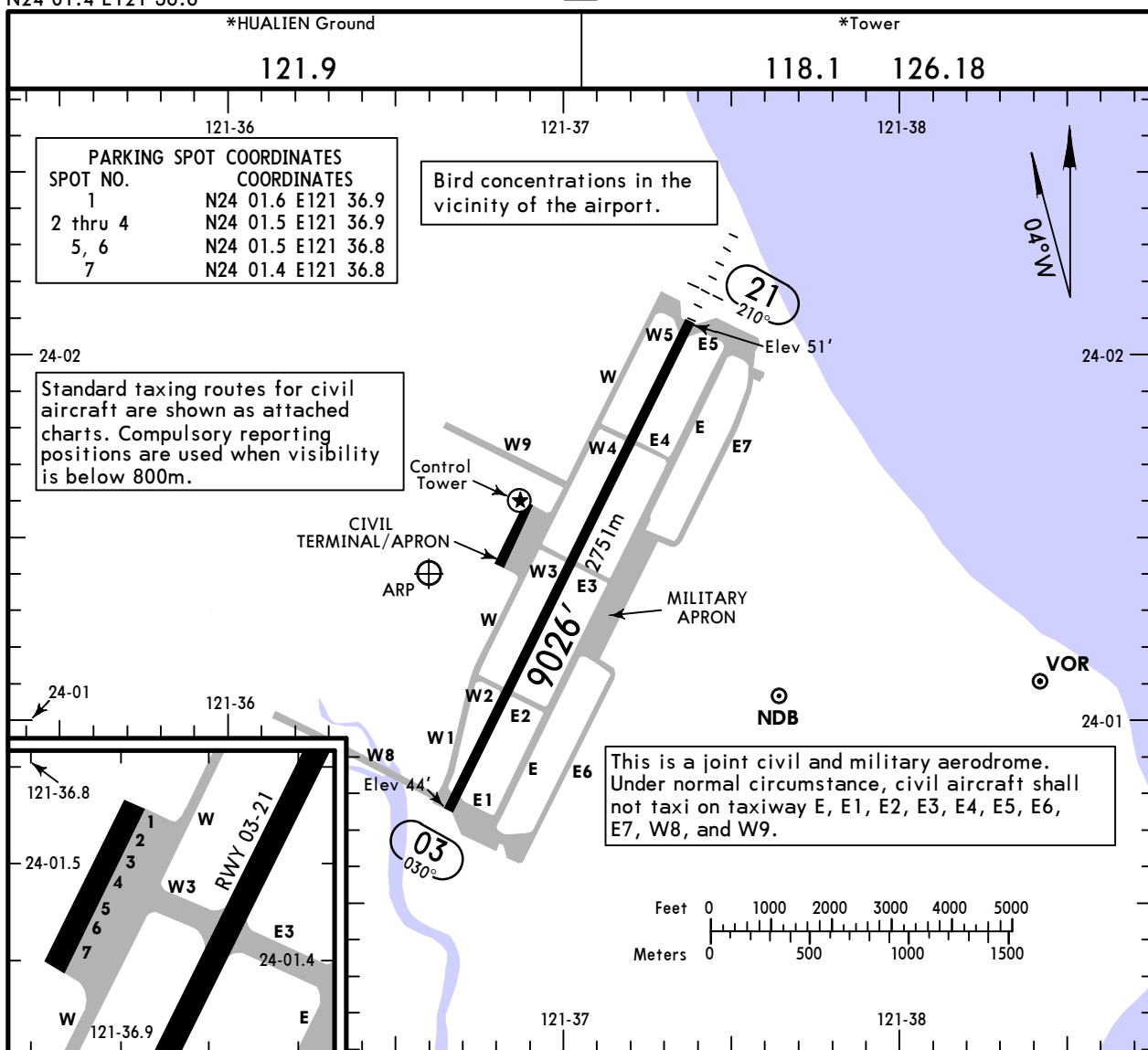
Apt Elev **51'**  
N24 01.4 E121 36.6

**JEPPESEN**

28 JUL 17 **(10-9)**

**HUALIEN, TAIWAN**

**HUALIEN**



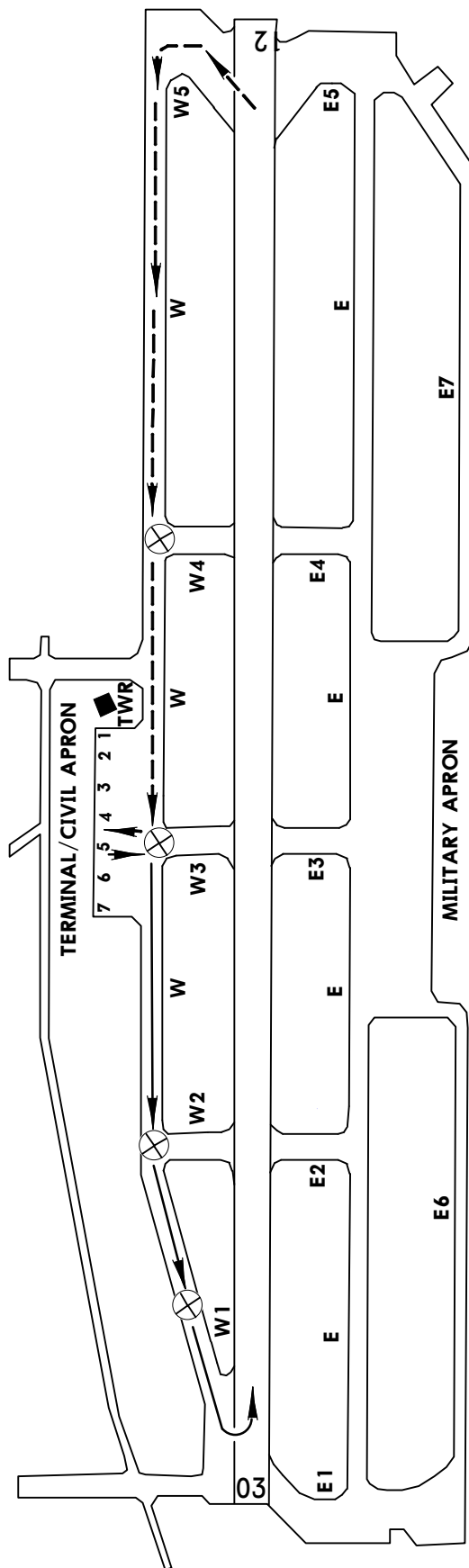
**ADDITIONAL RUNWAY INFORMATION**

RWY	USABLE LENGTHS			TAKE-OFF	WIDTH
	RL	REIL	PAPI-L (angle)		
03	RL	REIL	PAPI-L (angle 3.00°)		148'
21	RL	MALSF	PAPI-L (angle 2.98°)		45m

**TAKE-OFF**

All Rwys		USABLE LENGTHS
Eng	RL & RCLM	TAKE-OFF
1 & 2	550m	NIL (Day Only)
Eng		1600m
3 & 4	550m	800m
Eng		

Hualien Airport Standard Taxiing Routes for Rwy 03



LEGEND

----- Standard taxiing routes for arriving aircraft.

———— Standard taxiing routes for departing aircraft.

⊗ Compulsory reporting position (When visibility is below 800m)

RCYU/HUN

JEPPESEN

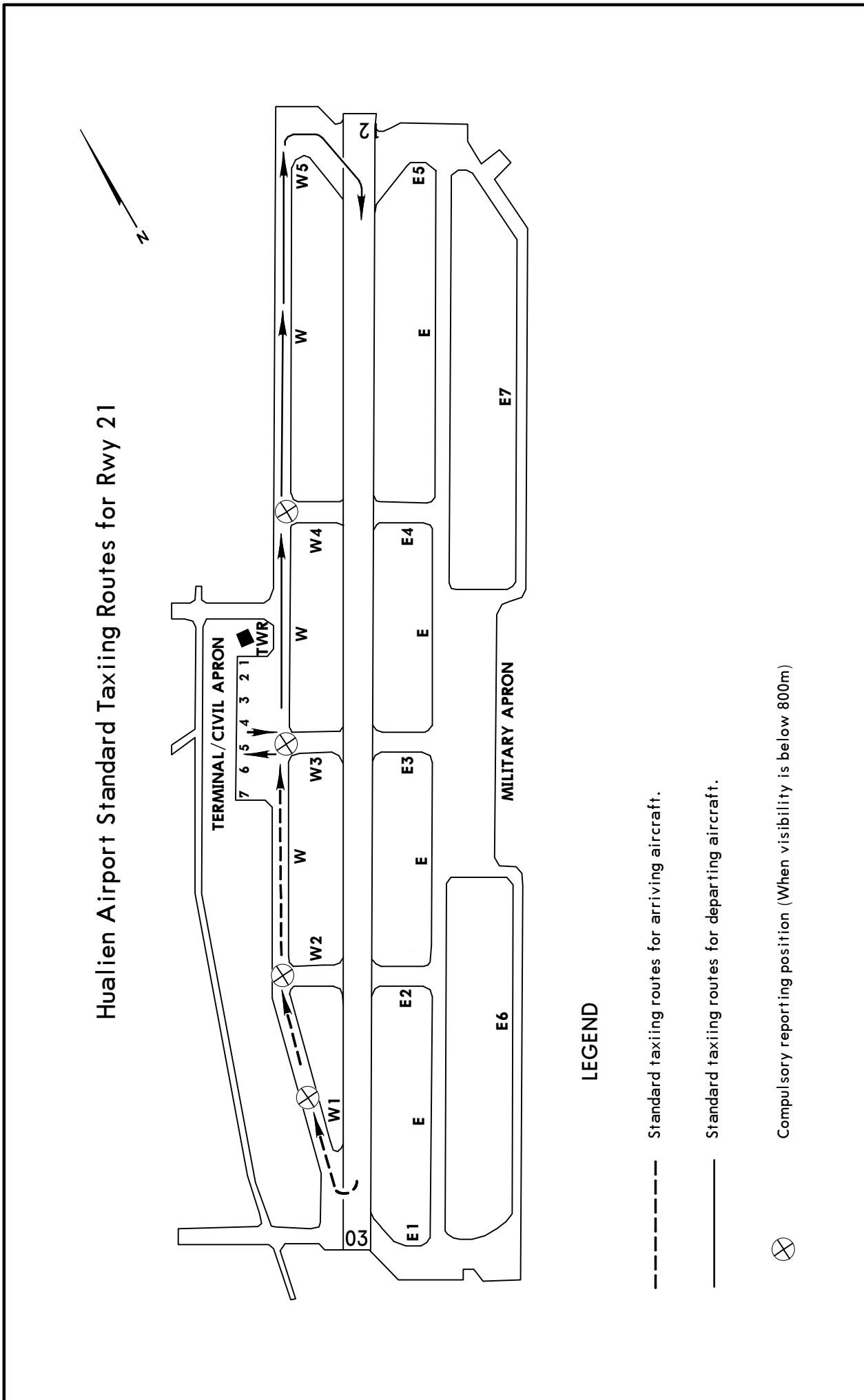
HUALIEN, TAIWAN

20 APR 07

10-9B

HUALIEN

STANDARD TAXI ROUTES RWY 21

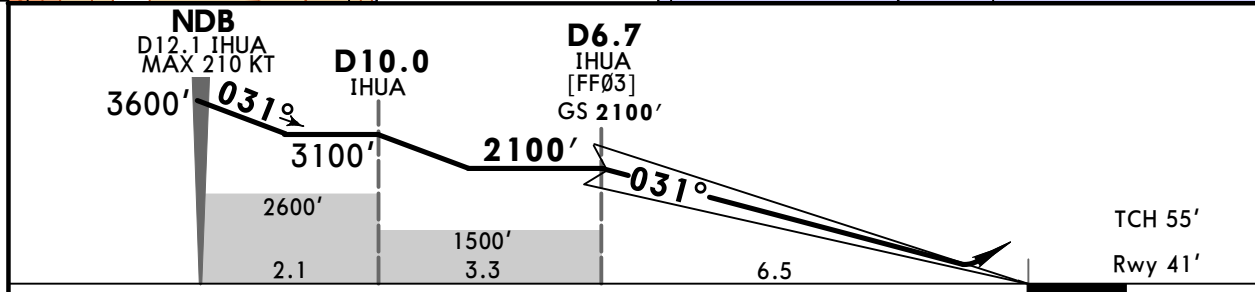
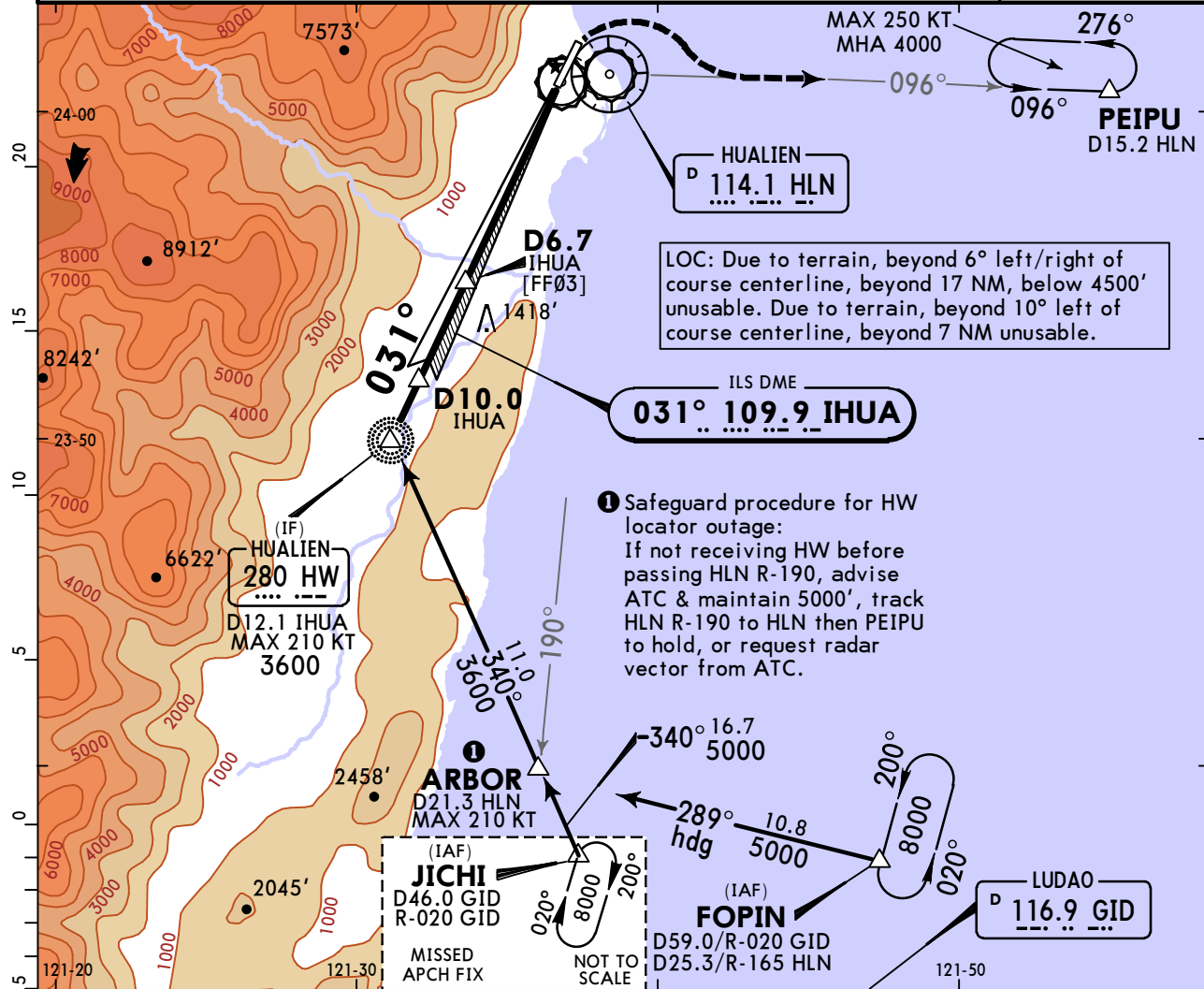


# RCYU/HUN HUALIEN

**JEPPESSEN**  
31 MAR 23 (11-1)

# HUALIEN, TAIWAN ILS Rwy 03

TAIPEI Approach (R) 124.0 119.1		*HUALIEN Tower 118.1 126.18		*Ground 121.9	
LOC IHUA <b>109.9</b>	Final Apch Crs <b>031°</b>	D6.7 IHUA <b>2100'</b> (2056')	ILS DA(H) Refer to Minimums	Apt Elev 51' Rwy 44'	<p>MSA HLN VOR</p>
<b>MISSED APCH: Climb on runway heading until leaving 630', then turn RIGHT to track outbound HLN VOR R-096 to PEIPU, maintain 4000' and hold.</b>					
Alt Set: hPa    Rwy Elev: 2 hPa    Trans level: FL130    Trans alt: 11000'					
1. DME Required.    2. CAUTION: High terrain around the airport and along the approach course.    3. 341' stack at 1.52 NM east of Rwy 03 threshold.    4. 405' tree at 1.18 NM southeast of Rwy 03 threshold.					



Gnd speed-Kts	70	90	100	120	140	160	ALS REIL PAPI	630'	4000'	HLN 114.1 R-096	PEIPU
Gs	3.00°	372	478	531	637	849					

STRAIGHT-IN LANDING RWY 03						CIRCLE-TO-LAND	
ILS DA(H) A: <b>251'</b> (207') B: <b>263'</b> (219') C: <b>271'</b> (227') D: <b>281'</b> (237')						Max Kts	
FULL			ALS out			NA	

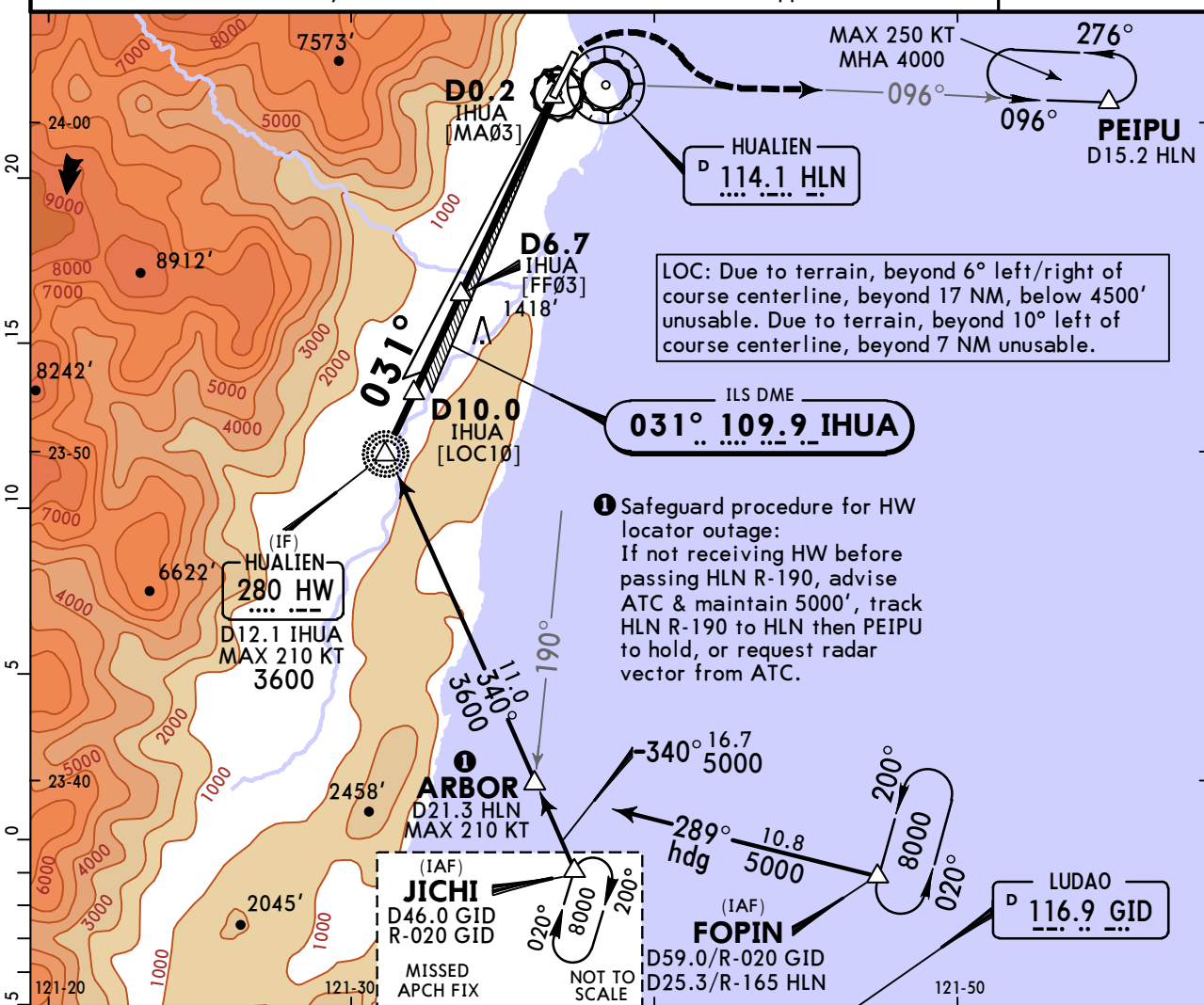
PANS OPS	A		RVR 1200m VIS 1200m	Max Kts A B C D	NA
	B				
	C				
	D				

# RCYU/HUN HUALIEN

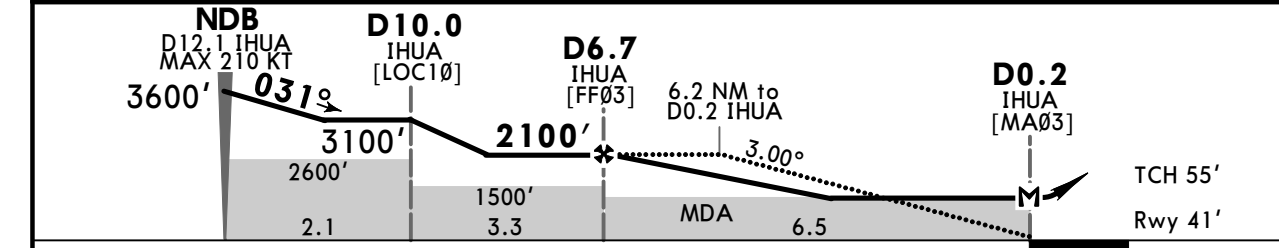
**JEPPESSEN**  
31 MAR 23 (11-2)

# HUALIEN, TAIWAN LOC Rwy 03

TAIPEI Approach (R) 124.0 119.1		*HUALIEN Tower 118.1 126.18		*Ground 121.9	
LOC IHUA <b>109.9</b>	Final Apch Crs <b>031°</b>	D6.7 IHUA <b>2100'</b> (2056')	MDA(H) <b>630'</b> (586')	Apt Elev 51'	Rwy 44'
<b>MISSED APCH: Turn RIGHT to track HLN R-096 to PEIPU, maintain 4000' and hold.</b>					<p>MSA HLN VOR</p>
Alt Set: hPa Rwy Elev: 2 hPa Trans level: FL130 Trans alt: 11000'					
1. DME Required. 2. CAUTION: High terrain around the airport and along the approach course. 3. 341' stack at 1.52 NM east of Rwy 03 threshold. 4. 405' tree at 1.18 NM southeast of Rwy 03 threshold. 5. No turn before Missed Approach Point.					



DIST to IHUA	6.0	5.0	4.0	3.0	2.0
ALTITUDE	1960'	1640'	1320'	1000'	690'



Gnd speed-Kts	70	90	100	120	140	160	ALS REIL PAPI	4000'	HLN 114.1 R-096	PEIPU
Descent Angle	3.00°	372	478	531	637	743				
MAP at D0.2 IHUA								RT		

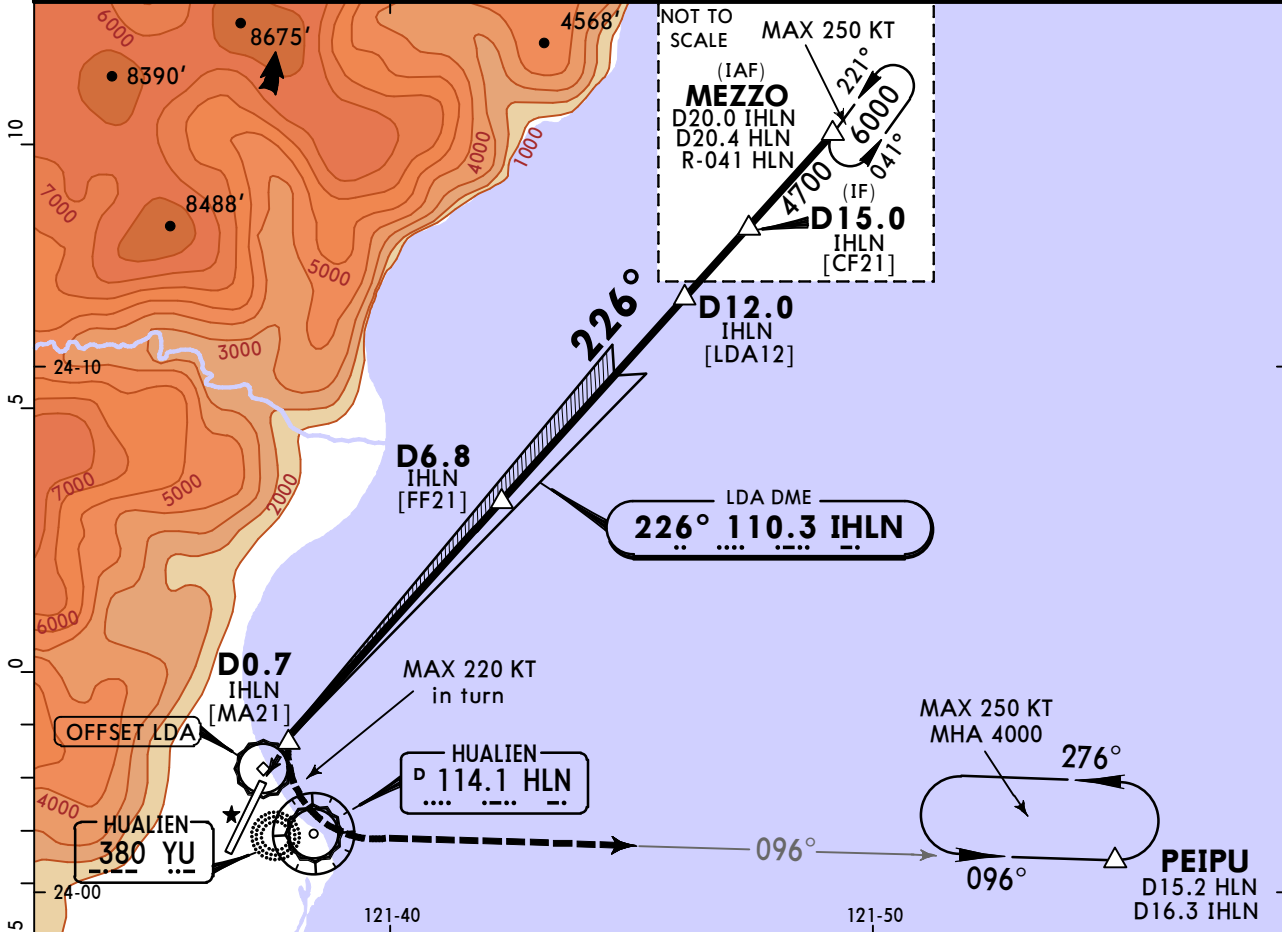
STRAIGHT-IN LANDING RWY 03				CIRCLE-TO-LAND			
MDA(H) <b>630'</b> (586')				ALS out			
PANS OPS	A	RVR 1500m	vis 1600m	1600m		NA	
	B						
	C	2500m		2700m			
	D						

# RCYU/HUN HUALIEN

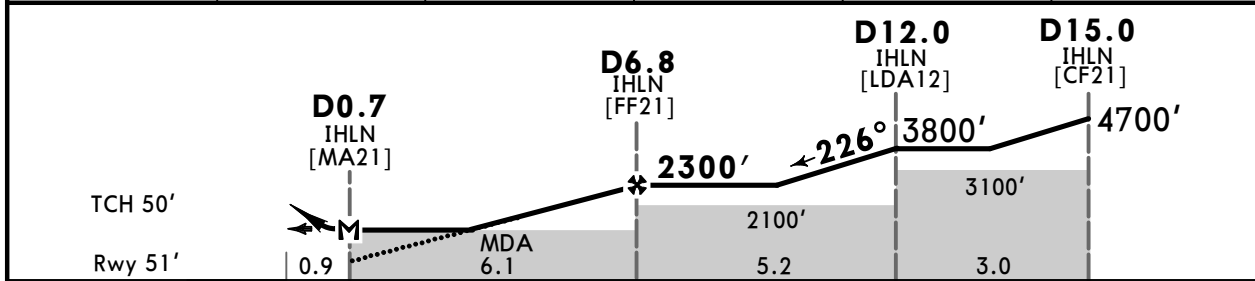
**JEPPESEN**  
31 MAR 23 **(11-3)**

# HUALIEN, TAIWAN LDA Rwy 21

TAIPEI Approach (R) 124.0 119.1		*HUALIEN Tower 118.1 126.18		*Ground 121.9	
LDA IHLN <b>110.3</b>	Final Apch Crs <b>226°</b>	D6.8 IHLN <b>2300'</b> (2249')	MDA(H) <b>520'</b> (469')	Apt Elev 51'	Rwy 51'
<b>MISSED APCH: Turn LEFT to track 096° bearing from YU NDB/HLN VOR R-096, proceed to PEIPU, maintain 4000' and hold.</b>					
Alt Set: hPa      Rwy Elev: 2 hPa      Trans level: FL130      Trans alt: 11000'					
1. DME required. 2. CAUTION: High terrain west of the airport. 3. LOC course offset from landing rwy by 15° and final apch course crosses rwy centerline extension at 0.85 NM from Rwy 21 threshold. 4. LDA: Beyond 15° right of course centerline unusable. 5. 341' stack at 1.52NM east of Rwy 03 threshold. 6. 405' tree at 1.18 NM southeast of Rwy 03 threshold.					



DIST to IHLN	2.0	3.0	4.0	5.0	6.0
ALTITUDE	810'	1120'	1440'	1760'	2080'



Gnd speed-Kts	70	90	100	120	140	160	MALSF PAPI 4000' LT	YU 380 096°	HLN or 114.1 R-096	PEIPU
Descent Angle	3.00°	372	478	531	637	743				
MAP at D0.7 IHLN										

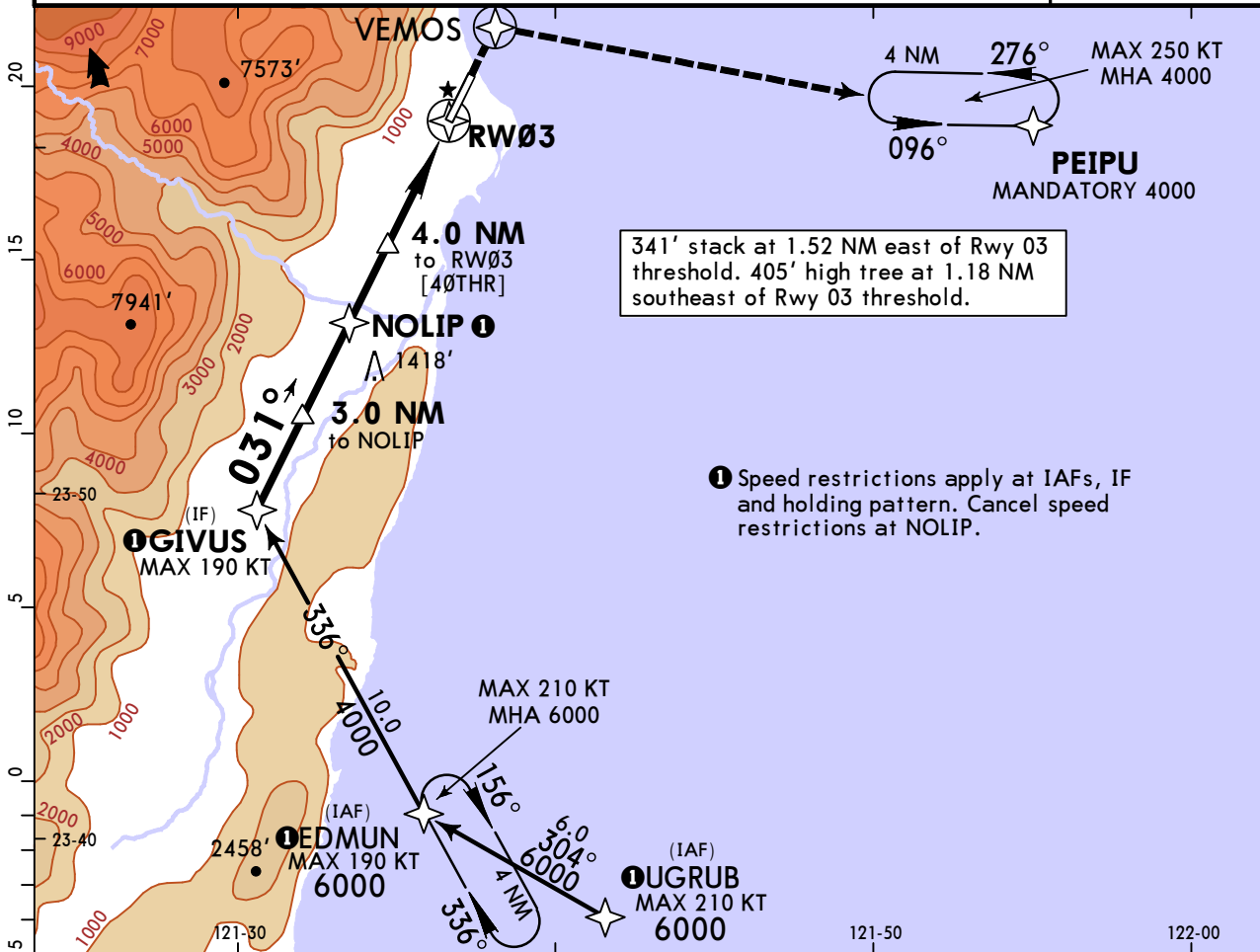
STRAIGHT-IN LANDING RWY 21				CIRCLE-TO-LAND			
MDA(H) <b>520'</b> (469')				Not Authorized West of Rwy			
ALS out				Max Kts			
A	RVR/VIS 1200m	1600m		100	700' (649') -1900m		
B	1600m	2200m		135	700' (649') -2800m		
C	1800m			180	800' (749') -3700m		
D				205	800' (749') -4600m		

# RCYU/HUN HUALIEN

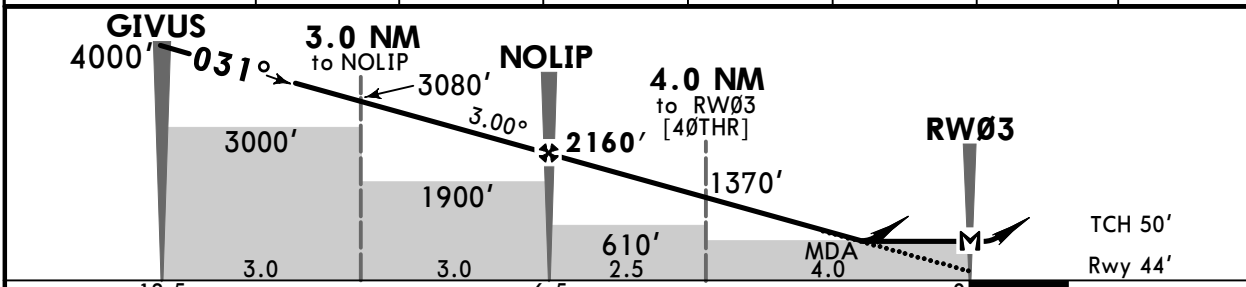
**JEPPESEN**  
13 DEC 19 (12-1)

# HUALIEN, TAIWAN RNP Rwy 03

TAIPEI Approach (R) 124.0 119.1		*HUALIEN Tower 118.1 126.18		*Ground 121.9	
RNAV	Final Apch Crs <b>031°</b>	NOLIP <b>2160'</b> (2116')	LNAV/VNAV DA(H) <b>565'</b> (521')	Apt Elev 51' Rwy 44'	14,000  MSA ARP
<b>MISSED APCH: Direct to VEMOS, then turn RIGHT direct to PEIPU, maintain 4000' and hold.</b>					
RNP Apch	Alt Set: hPa	Rwy Elev: 2 hPa	Trans level: FL 130	Trans alt: 11000'	
1. CAUTION: High terrain west of the airport. 2. VNAV not valid below airport temp 0°C (32°F).					



DIST to THR	NOLIP	6.0	5.0	4.0	3.0	2.0	1.5
ALTITUDE	2160'	2010'	1690'	1370'	1050'	740'	580'



Gnd speed-Kts	70	90	100	120	140	160	ALS REIL PAPI VEMOS MANDATORY 4000' PEIPU
Descent Angle	3.00°	372	478	531	637	743	
LNAV/VNAV: MAP at DA							
LNAV: MAP at RW03							

STRAIGHT-IN LANDING RWY 03				CIRCLE-TO-LAND			
LNAV/VNAV		LNAV		LNAV/VNAV		CIRCLE-TO-LAND	
DA(H) <b>565'</b> (521')		MDA(H) <b>550'</b> (506')		DA(H) <b>565'</b> (521')		MDA(H) <b>550'</b> (506')	
ALS out		ALS out		ALS out		ALS out	

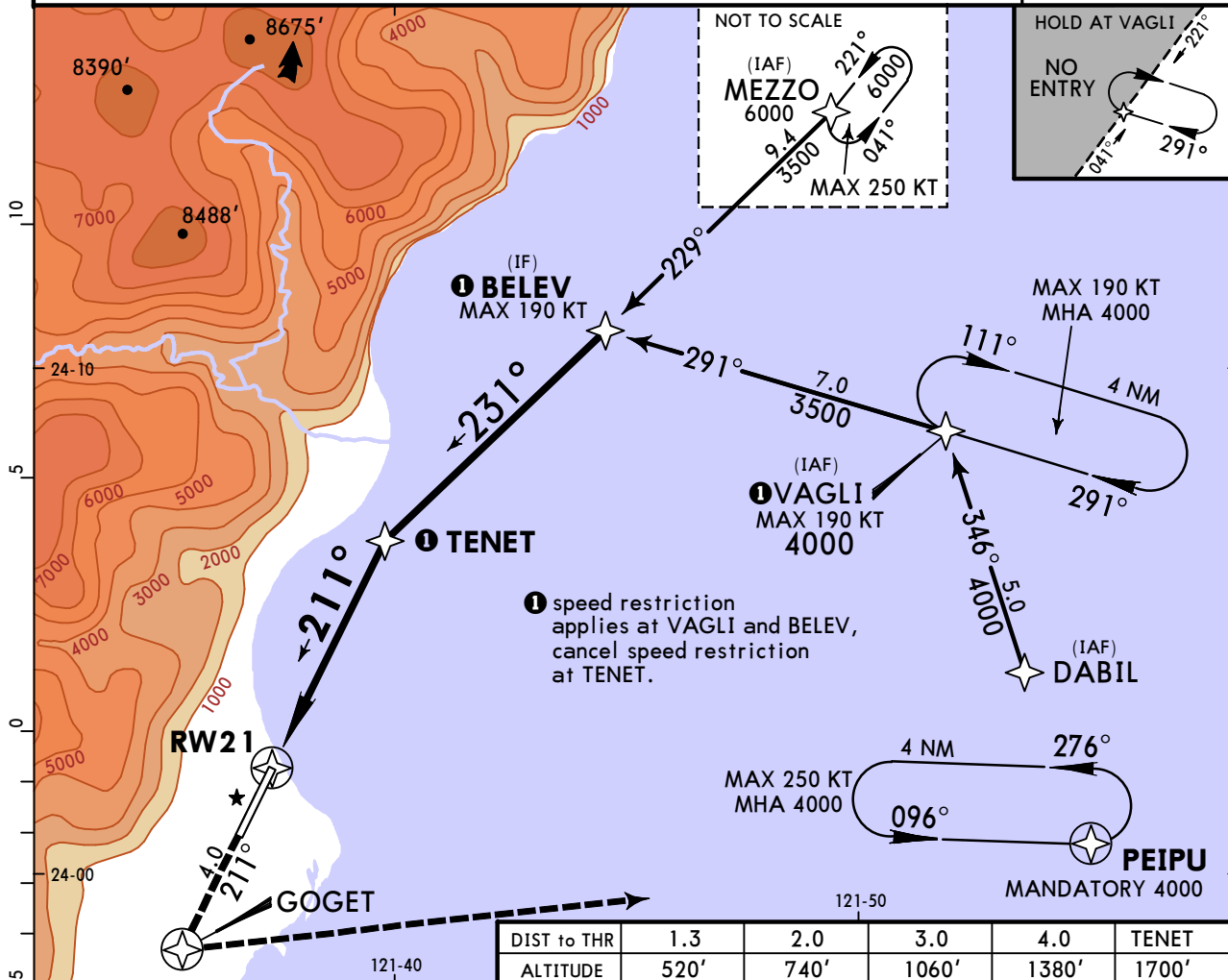
PANS OPS	A					A	
	B					B	
	C	2200m	2400m	2200m	2400m	C	NA
	D					D	

# RCYU/HUN HUALIEN

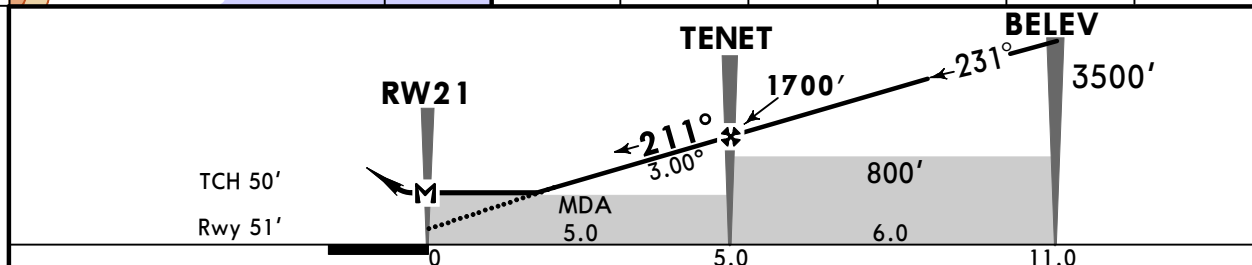
**JEPPESEN**  
13 DEC 19 (12-2)

# HUALIEN, TAIWAN RNP Rwy 21

TAIPEI Approach (R) 124.0 119.1		*HUALIEN Tower 118.1 126.18		*Ground 121.9	
RNAV	Final Apch Crs <b>211°</b>	<b>TENET</b> 1700' (1649')	LNAV MDA(H) <b>430' (379')</b>	Apt Elev 51'	Rwy 51'
<b>MISSED APCH: Track direct to GOGET, then turn LEFT direct to PEIPU, maintain 4000' and hold.</b>					14,000  MSA ARP
RNP Apch	Alt Set: hPa	Rwy Elev: 2 hPa	Trans level: FL 130	Trans alt: 11000'	
1. CAUTION: High terrain West of the airport. 2. 341' high stack at 1.52 NM east of Rwy 03 threshold. 3. 405' high tree at 1.18 NM southeast of Rwy 03 threshold.					



DIST to THR	1.3	2.0	3.0	4.0	TENET
ALTITUDE	520'	740'	1060'	1380'	1700'



Gnd speed-Kts	70	90	100	120	140	160	MALSFP PAPI GOGET MANDATORY 4000' LT PEIPU
Descent Angle 3.00°	372	478	531	637	743	849	
LNAV/VNAV: MAP at DA							
LNAV: MAP at RW21							

STRAIGHT-IN LANDING RWY 21				CIRCLE-TO-LAND			
Missed apch climb gradient mim 3.5%		Missed apch climb gradient mim 2.5%					
MDA(H) <b>430' (379')</b>		A & B: MDA(H) <b>430' (379')</b>					
		C: MDA(H) <b>500' (449')</b>					
		D: MDA(H) <b>520' (469')</b>					
ALS out		ALS out					

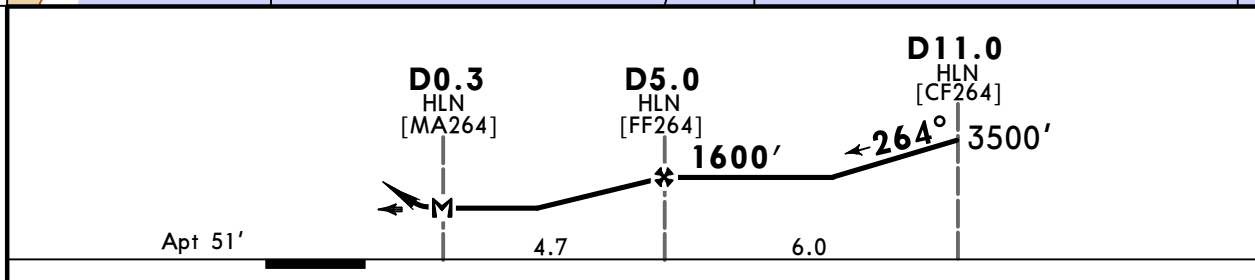
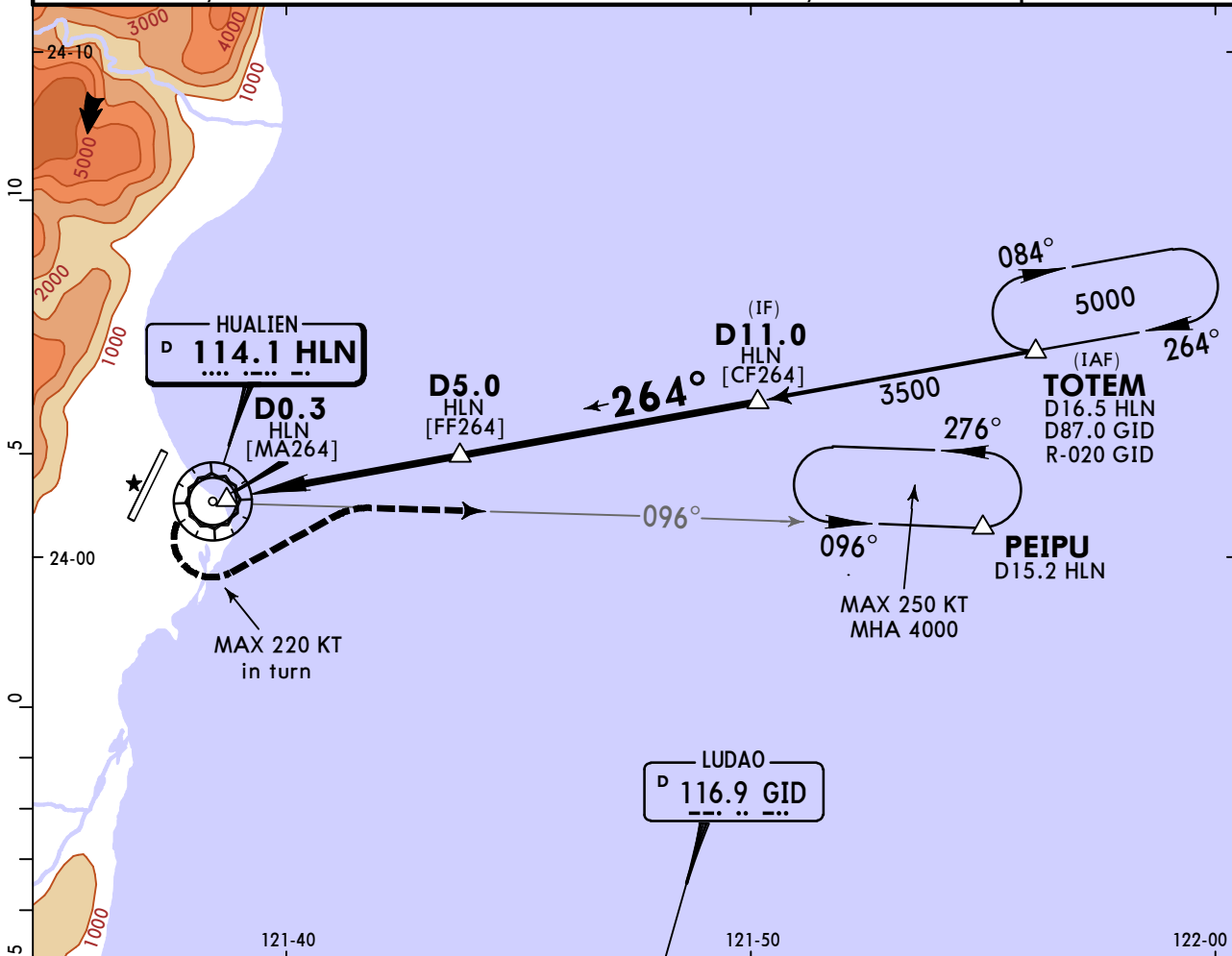
PANS OPS	A	RVR/VIS 1200m	1600m	RVR/VIS 1200m	1600m	A	NA
	B		1600m	1600m	1600m	B	
	C	1600m	1700m	1700m	2100m	C	
	D		1700m	1800m	2200m	D	

RCYU/HUN  
HUALIEN

**JEPPESEN**  
10 AUG 18 **(13-1)** **Eff 16 Aug**

**HUALIEN, TAIWAN**  
**VOR A**

TAIPEI Approach (R)		*HUALIEN Tower		*Ground	
124.0	119.1	118.1	126.18	121.9	
VOR HLN <b>114.1</b>	Final Apch Crs <b>264°</b>	Minimum Alt <b>D5.0 HLN</b> <b>1600'</b> (1549')	MDA(H) Refer to Minimums	Apt Elev 51'	
<b>MISSED APCH: Turn LEFT to track HLN VOR R-096 to PEIPU, maintain 4000' and hold.</b>					
Alt Set: hPa      Apt Elev: 2 hPa      Trans level: FL 130      Trans alt: 11000'					
1. DME required. 2. CAUTION: High terrain west of the airport 3. 341' stack at 1.52 NM east of Rwy 03 threshold. 4. 405' tree at 1.18 NM southeast of Rwy 03 threshold.					



						Lighting - Refer to Airport Chart		HLN <b>114.1</b>	<b>PEIPU</b>
MAP at D0.3 HLN								<b>R-096</b>	

**CIRCLE-TO-LAND**  
Not Authorized West of Rwy

	Max Kts	MDA(H)
A	100	<b>700'</b> (649') -1900m
B	135	<b>700'</b> (649') -2800m
C	180	<b>800'</b> (749') -3700m
D	205	<b>800'</b> (749') -4600m

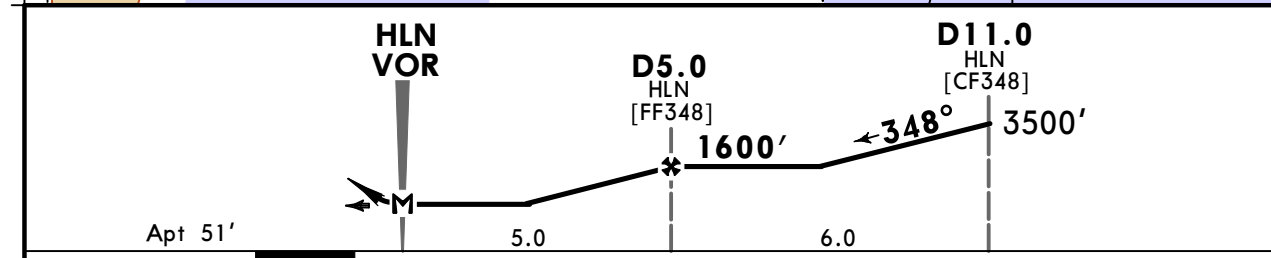
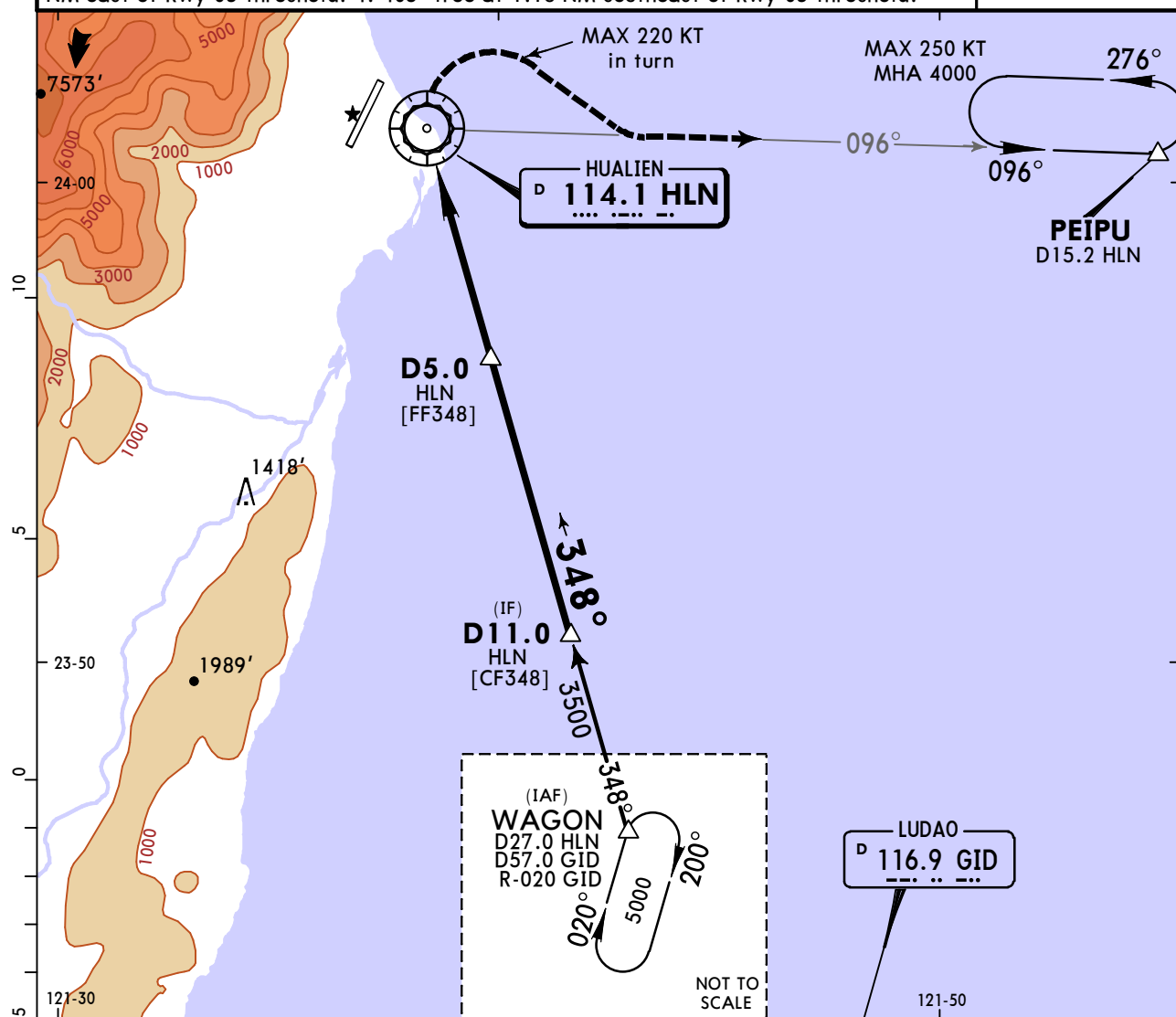
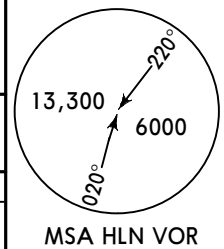
PANS OPS

# RCYU/HUN HUALIEN

**JEPPESEN**  
10 AUG 18 **(13-2)** Eff 16 Aug

# HUALIEN, TAIWAN VOR B

TAIPEI Approach (R) 124.0 119.1		*HUALIEN Tower 118.1 126.18		*Ground 121.9	
VOR HLN <b>114.1</b>	Final Apch Crs <b>348°</b>	Minimum Alt <b>D5.0 HLN</b> <b>1600'</b> (1549')	MDA(H) Refer to Minimums	Apt Elev 51'	
<b>MISSED APCH: Turn RIGHT to track HLN VOR R-096 to PEIPU, maintain 4000' and hold.</b>					
Alt Set: hPa    Apt Elev: 2 hPa    Trans level: FL 130    Trans alt: 11000'					
1. DME required.    2. CAUTION: High terrain west of the airport.    3. 341' stack at 1.52 NM east of Rwy 03 threshold.    4. 405' tree at 1.18 NM southeast of Rwy 03 threshold.					



MAP at HLN VOR					Lighting-Refer to Airport Chart	RT	HLN <b>114.1</b> <b>R-096</b>	PEIPU
----------------	--	--	--	--	---------------------------------	----	-------------------------------------	-------

PANS OPS		CIRCLE-TO-LAND	
Not Authorized West of Rwy			
	Max Kts	MDA(H)	
A	100	<b>700'</b> (649') -1900m	
B	135	<b>700'</b> (649') -2800m	
C	180	<b>800'</b> (749') -3700m	
D	205	<b>800'</b> (749') -4600m	

### Chart changes since cycle 15-2023

ADD = added chart, REV = revised chart, DEL = deleted chart.

ACT	PROCEDURE IDENT	INDEX	REV DATE	EFF DATE
HUALIEN, (HUALIEN - RCYU)				

## TERMINAL CHART CHANGE NOTICES

### Chart Change Notices for Airport RCYU

**Type:** Terminal

**Effectivity:** Permanent

**Begin Date:** 20180717

**End Date:** No end date

Approach Light system on Rwy 03 commisioned. ALS about length 360m.