

List of pages in this Trip Kit

Trip Kit Index

Airport Information For VTBU

Terminal Charts For VTBU

Revision Letter For Cycle 02-2019

Change Notices

Notebook

General Information

Location: RAYONG THA
ICAO/IATA: VTBU / UTP
Lat/Long: N12° 40.78', E101° 00.29'
Elevation: 59 ft

Airport Use: Joint-Use
Daylight Savings: Not Observed
UTC Conversion: -7:00 = UTC
Magnetic Variation: 0.6° W

Fuel Types: 100 Octane (LL), Jet A-1
Customs: Yes
Airport Type: IFR
Landing Fee: Yes
Control Tower: Yes
Jet Start Unit: No
LLWS Alert: No
Beacon: Yes

Sunrise: 2342 Z
Sunset: 1118 Z

Runway Information

Runway: 18
Length x Width: 11499 ft x 197 ft
Surface Type: concrete
TDZ-Elev: 59 ft
Lighting: Edge, ALS
Stopway: 1001 ft

Runway: 36
Length x Width: 11499 ft x 197 ft
Surface Type: concrete
TDZ-Elev: 24 ft
Lighting: Edge, ALS
Stopway: 1001 ft

Communication Information

ATIS: 41.400
U-Tapao Tower: 118.300
U-Tapao Tower: 22.700 Military
U-Tapao Tower: 118.100
U-Tapao Ground: 121.900
U-Tapao Ground: 27.580 Military
U-Tapao Approach: 23.830 Military

U-Tapao Approach: 27.330 Military

U-Tapao Approach: 119.700

U-Tapao Approach: 134.500

VTBU/UTP
U-TAPAO PATTAYA INTL

JEPPESSEN
5 OCT 18 10-3 Eff 11 Oct

RAYONG, THAILAND
RNAV SID

Apt Elev
59

Trans alt: 11000

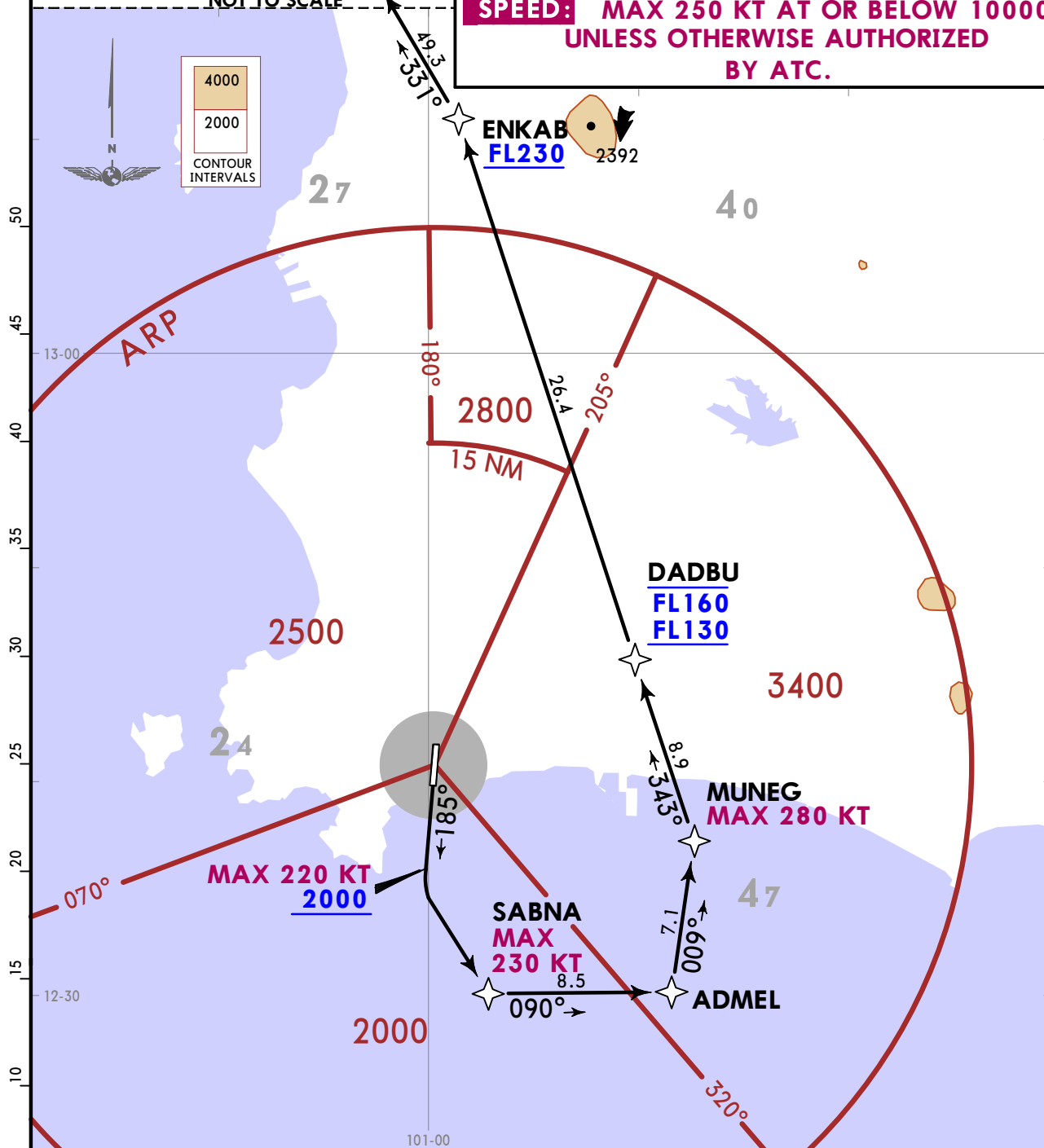
1. RNP 1 required. 2. GNSS required. 3. No turn before DER.

BANGKOK
117.7 BKK

NOT TO SCALE

BKK 1A [BKK1A]
RWY 18 RNAV DEPARTURE

SPEED: MAX 250 KT AT OR BELOW 10000
UNLESS OTHERWISE AUTHORIZED
BY ATC.



- LOST COMMS ▼ LOST COMMS ▼ LOST COMMS ▼ LOST COMMS ▼
1. Set transponder code 7600.
 2. Proceed on SID, comply with last assigned level or MFA whichever is higher until the last waypoint of the procedure, then climb to flight plan cruising level.
- LOST COMMS ▲ LOST COMMS ▲ LOST COMMS ▲ LOST COMMS ▲

This SID requires a minimum climb gradient of 377 per NM (6.2%) until FL230 for airspace restrictions only. If unable to comply with SID or climb gradient, advise U-TAPAO approach on 119.7 MHz.

Gnd speed-KT	75	100	150	200	250	300
377 per NM	471	628	943	1257	1571	1885

VTBU/UTP
U-TAPOA PATTAYA INTL

JEPPESSEN
 5 OCT 18 **(10-3A)** **Eff 11 Oct**

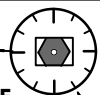
RAYONG, THAILAND
RNAV SID

Apt Elev
59

Trans alt: 11000

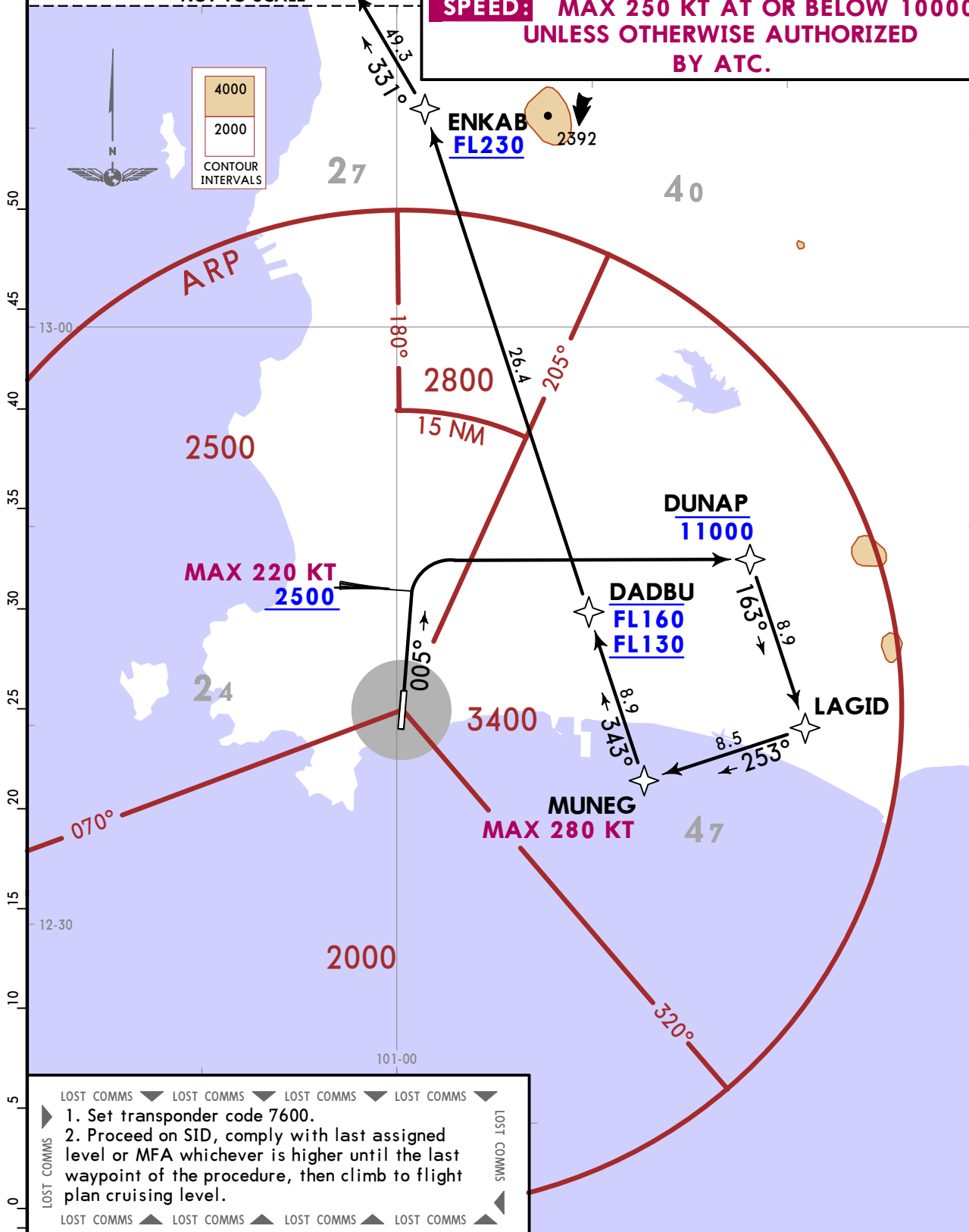
- 1. RNP 1 required.
- 2. GNSS required.
- 3. No turn before DER.

BANGKOK
117.7 BKK



NOT TO SCALE

BKK 1B [BKK1B]
RWY 36 RNAV DEPARTURE
SPEED: MAX 250 KT AT OR BELOW 10000
UNLESS OTHERWISE AUTHORIZED
BY ATC.



- LOST COMMS ▼ LOST COMMS ▼ LOST COMMS ▼ LOST COMMS ▼
1. Set transponder code 7600.
 2. Proceed on SID, comply with last assigned level or MFA whichever is higher until the last waypoint of the procedure, then climb to flight plan cruising level.
- LOST COMMS ▲ LOST COMMS ▲ LOST COMMS ▲ LOST COMMS ▲

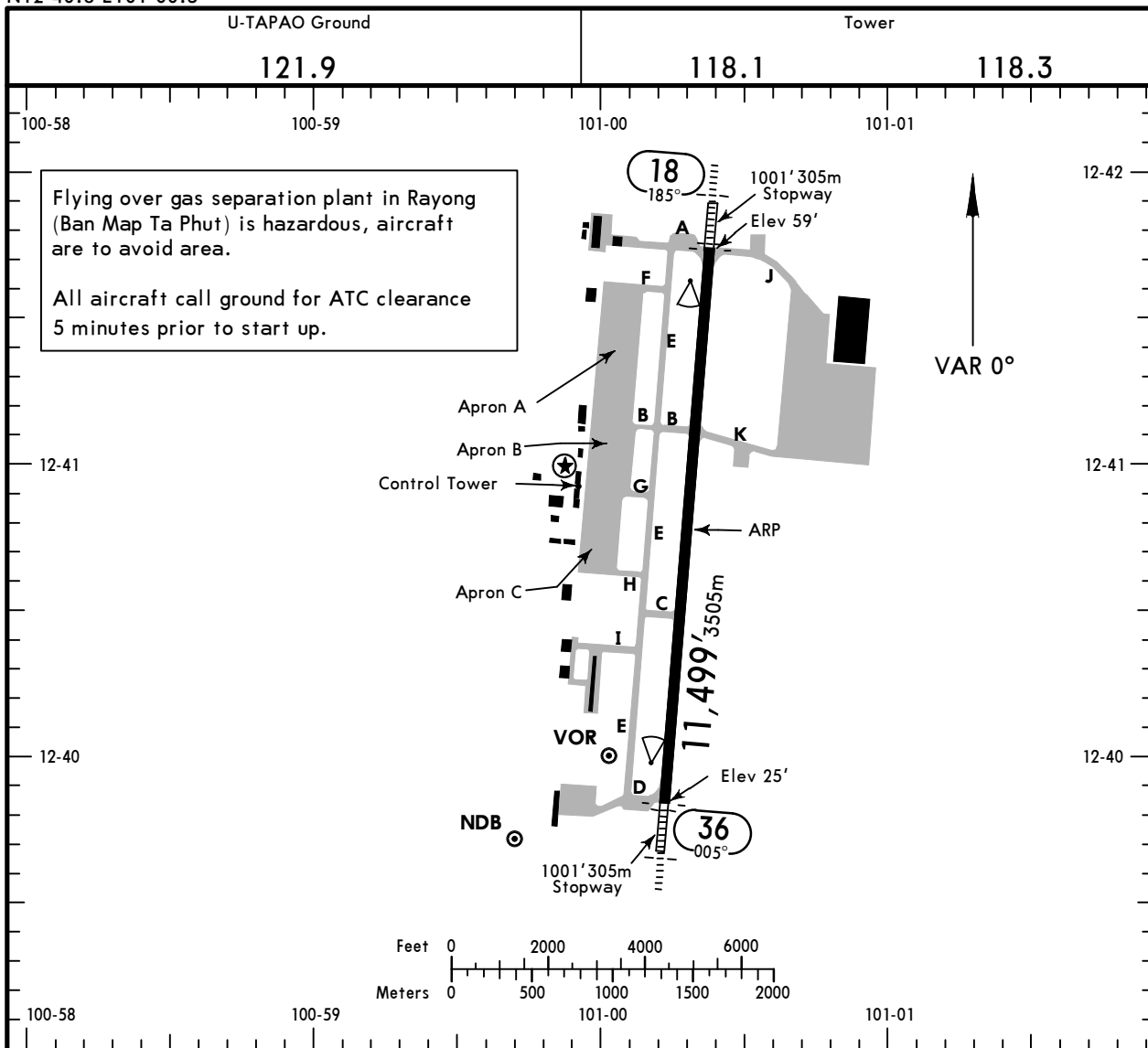
This SID requires a minimum climb gradient of 365 per NM (6.0%) until FL230 for airspace restrictions only. If unable to comply with SID or climb gradient, advise U-TAPOA approach on 119.7 MHz.

Gnd speed-KT	75	100	150	200	250	300
365 per NM	456	608	913	1217	1521	1825

VTBU/UTP
 Apt Elev **59'**
 N12 40.8 E101 00.3

JEPPesen
 1 JUN 18 **(10-9)**

RAYONG, THAILAND
 U-TAPAO PATTAYA INTL



ADDITIONAL RUNWAY INFORMATION

RWY					USABLE LENGTHS		TAKE-OFF	WIDTH
	HIRL (60m)	ALS	PAPI (angle 3.0°)	RVR	Threshold	Glide Slope		
18	HIRL (60m)	ALS	PAPI (angle 3.0°)	RVR		10,282' 3134m		197'
36	HIRL (60m)	SALS	PAPI-L (angle 3.0°)	RVR				60m

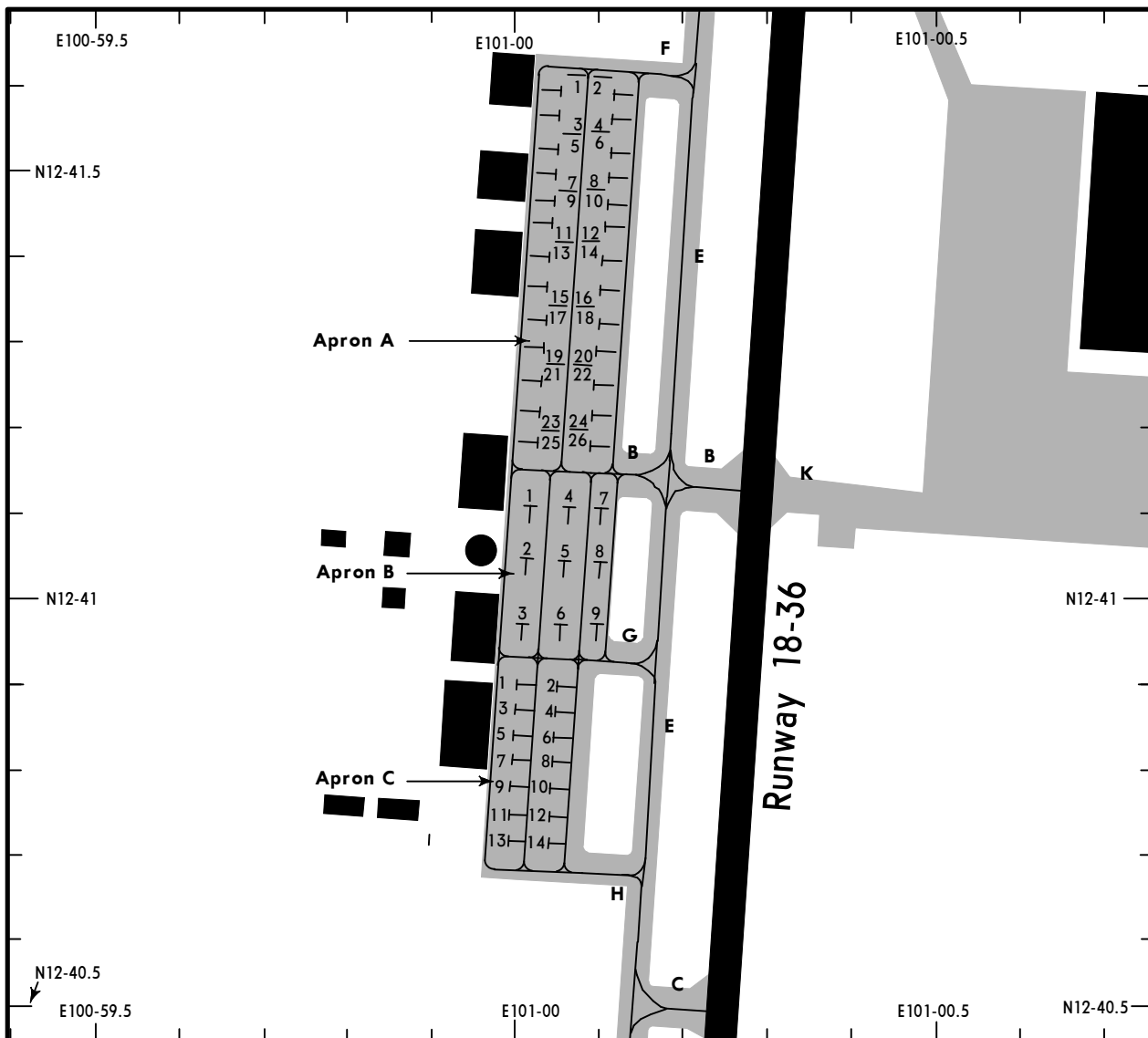
TAKE-OFF

	AIR CARRIER		AIR CARRIER (FAR 121)	
	LVP must be in Force All Rwys RCLM (Day only) or RL	All Rwys RCLM (Day only) or RL	All Rwys Adequate Vis Ref	
A			2 Eng	
B	250m		3 & 4 Eng	RVR 500m VIS 400m
C		400m		
D	300m			

VTBU/UTP

JEPPESSEN
1 JUN 18 (10-9A)

RAYONG, THAILAND
U-TAPAO PATTAYA INTL



PARKING BAY COORDINATES

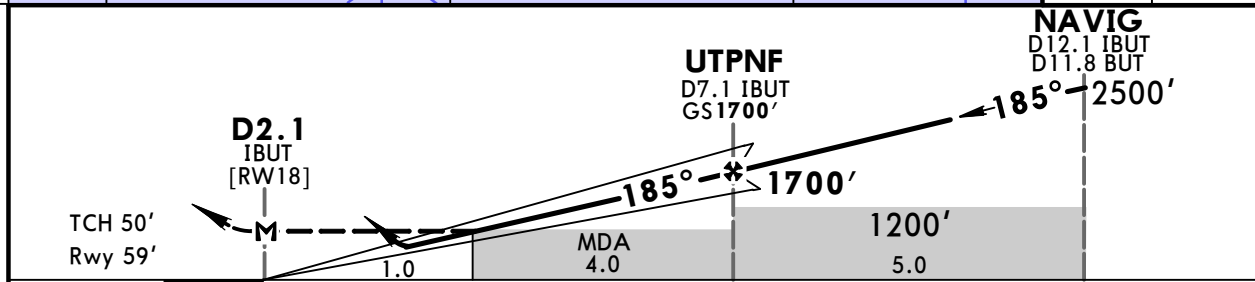
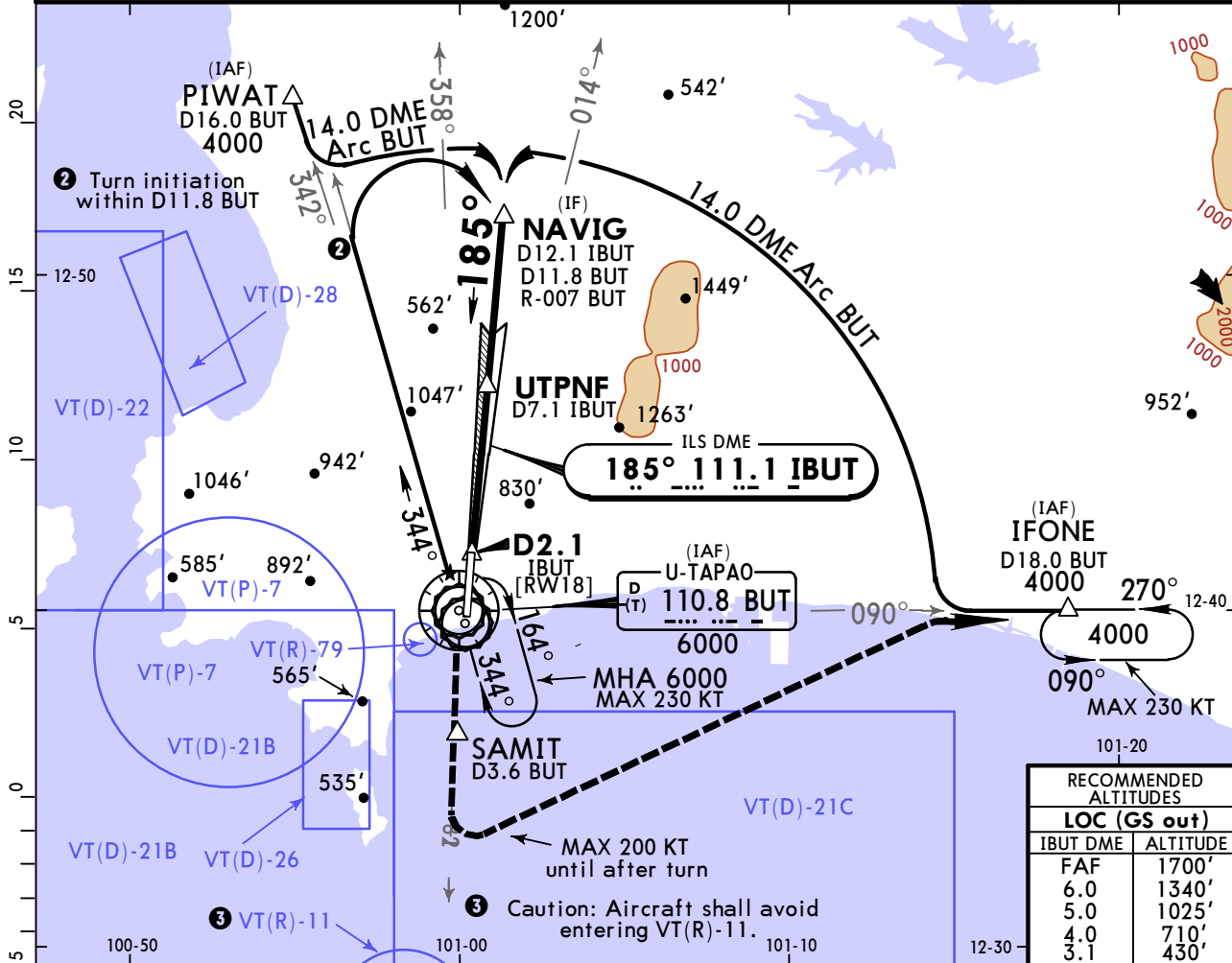
BAY No.	COORDINATES	BAY No.	COORDINATES
RAMP A		RAMP A	
1	N12 41.6 E101 00.0	26	N12 41.2 E101 00.1
2	N12 41.6 E101 00.1	RAMP B	
3	N12 41.5 E101 00.0	1	N12 41.1 E101 00.0
4	N12 41.5 E101 00.1	2	N12 41.0 E101 00.0
5	N12 41.5 E101 00.0	3	N12 40.9 E101 00.0
6	N12 41.5 E101 00.1	4	N12 41.1 E101 00.0
7	N12 41.5 E101 00.0	5	N12 41.0 E101 00.0
8	N12 41.5 E101 00.1	6	N12 40.9 E101 00.0
9	N12 41.4 E101 00.0	7	N12 41.1 E101 00.1
10	N12 41.4 E101 00.1	8	N12 41.0 E101 00.1
11	N12 41.4 E101 00.0	9	N12 40.9 E101 00.0
12	N12 41.4 E101 00.1	RAMP C	
13	N12 41.4 E101 00.0	1, 2	N12 40.9 E101 00.0
14	N12 41.4 E101 00.1	3 thru 8	N12 40.8 E101 00.0
15	N12 41.3 E101 00.0	9 thru 14	N12 40.7 E101 00.0
16	N12 41.3 E101 00.1		
17	N12 41.3 E101 00.0		
18	N12 41.3 E101 00.1		
19	N12 41.3 E101 00.0		
20	N12 41.3 E101 00.1		
21	N12 41.2 E101 00.0		
22	N12 41.2 E101 00.1		
23	N12 41.2 E101 00.0		
24	N12 41.2 E101 00.1		
25	N12 41.2 E101 00.0		

VTBU/UTP U-TAPAO PATTAYA INTL

JEPPESEN
2 DEC 16 (11-1) Eff 8 Dec

RAYONG, THAILAND ILS or LOC Rwy 18

U-TAPAO Approach (R)		U-TAPAO Tower		Ground
119.7	134.5	118.1	118.3	121.9
LOC IBUT 111.1	Final Apch Crs 185°	GS UTPNF 1700' (1641')	ILS DA(H) 340' (281')	Apt Elev 59' Rwy 59'
MISSED APCH: No turn before MAP. Climb to intercept outbound on BUT VOR R-182 to SAMIT. After SAMIT and passing 1500', turn LEFT to intercept outbound BUT VOR R-090, then proceed to IFONE and hold or as directed by ATC. Speed restricted to MAX 200 KT until after turn.				
Alt Set: hPa Rwy Elev: 2 hPa Trans level: FL 130 Trans alt: 11000'				MSA BUT VOR 2800'



Gnd speed-Kts	70	90	100	120	140	160	PAPI ALS	BUT 110.8 R-182	SAMIT
GS	3.00°	372	478	531	637	743			
MAP at D2.1 IBUT									

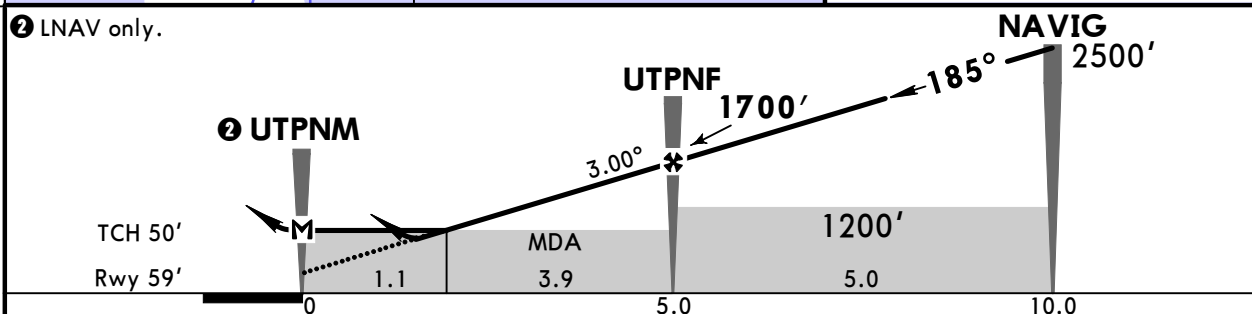
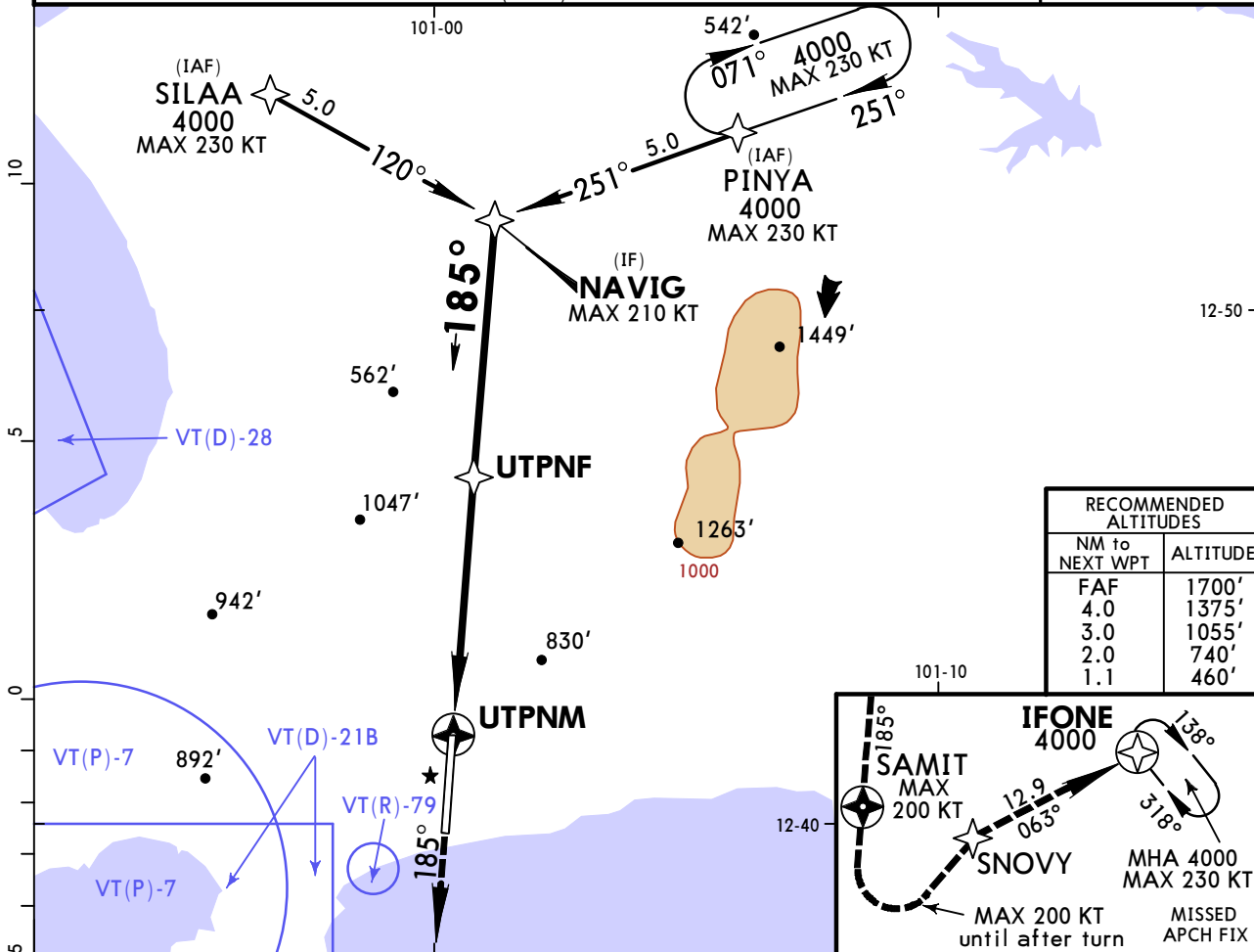
PANS OPS	STRAIGHT-IN LANDING RWY18				CIRCLE-TO-LAND	
	ILS		LOC (GS out)		Max Kts	MDA(H)
	FULL	ALS out	FULL	ALS out		
A					100	1200' (1141') - 2000m
B	1200m	1300m	1200m	1600m	135	1200' (1141') - 2400m
C					180	1450' (1391') - 4800m
D				2000m	205	

VTBU/UTP
U-TAPAO PATTAYA INTL

JEPPESEN
9 FEB 18 (12-1)

RAYONG, THAILAND
RNAV (GNSS) Rwy 18

U-TAPAO Approach (R)		U-TAPAO Tower		Ground
119.7	134.5	118.1	118.3	121.9
RNAV	Final Apch Crs 185°	Procedure Alt UTPNF 1700' (1641')	LNAV/VNAV DA(H) 400' (341')	Apt Elev 59' Rwy 59'
MISSED APCH: No turn before MAP. Climb on course 185° to SAMIT. After SAMIT and passing 1500', turn LEFT direct to SNOVY, then proceed to IFONE at 4000', and hold or as directed by ATC. Speed restricted to MAX 200 KT until after turn.				
Alt Set: hPa Rwy Elev: 2 hPa Trans level: FL 130 Trans alt: 11000' 1. RNP approach required. 2. Caution: Aircraft shall avoid entering VT(R)-11. 3. Baro-VNAV not authorized below 15°C (59°F).				MSA ARP 2800'



Gnd speed-Kts	70	90	100	120	140	160	PAPI ALS	185°	SAMIT
Descent Angle 3.00°	372	478	531	637	743	849			
LNAV/VNAV: MAP at DA									
LNAV: MAP at UTPNM									

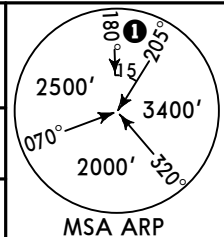
PANS OPS	STRAIGHT-IN LANDING RWY18		CIRCLE-TO-LAND	
	LNAV/VNAV DA(H) 400' (341')	LNAV MDA(H) 460' (401')	LNAV/VNAV DA(H) 400' (341')	LNAV MDA(H) 460' (401')
A	ALS out	ALS out	Max Kts	MDA(H)
B			100	1200' (1141') -2000m
C	1700m	1200m	135	1200' (1141') -2400m
D		2000m	180	1450' (1391') -4800m
			205	

VTBU/UTP
U-TAPAO PATTAYA INTL

JEPPESEN
 9 FEB 18 **(12-2)**

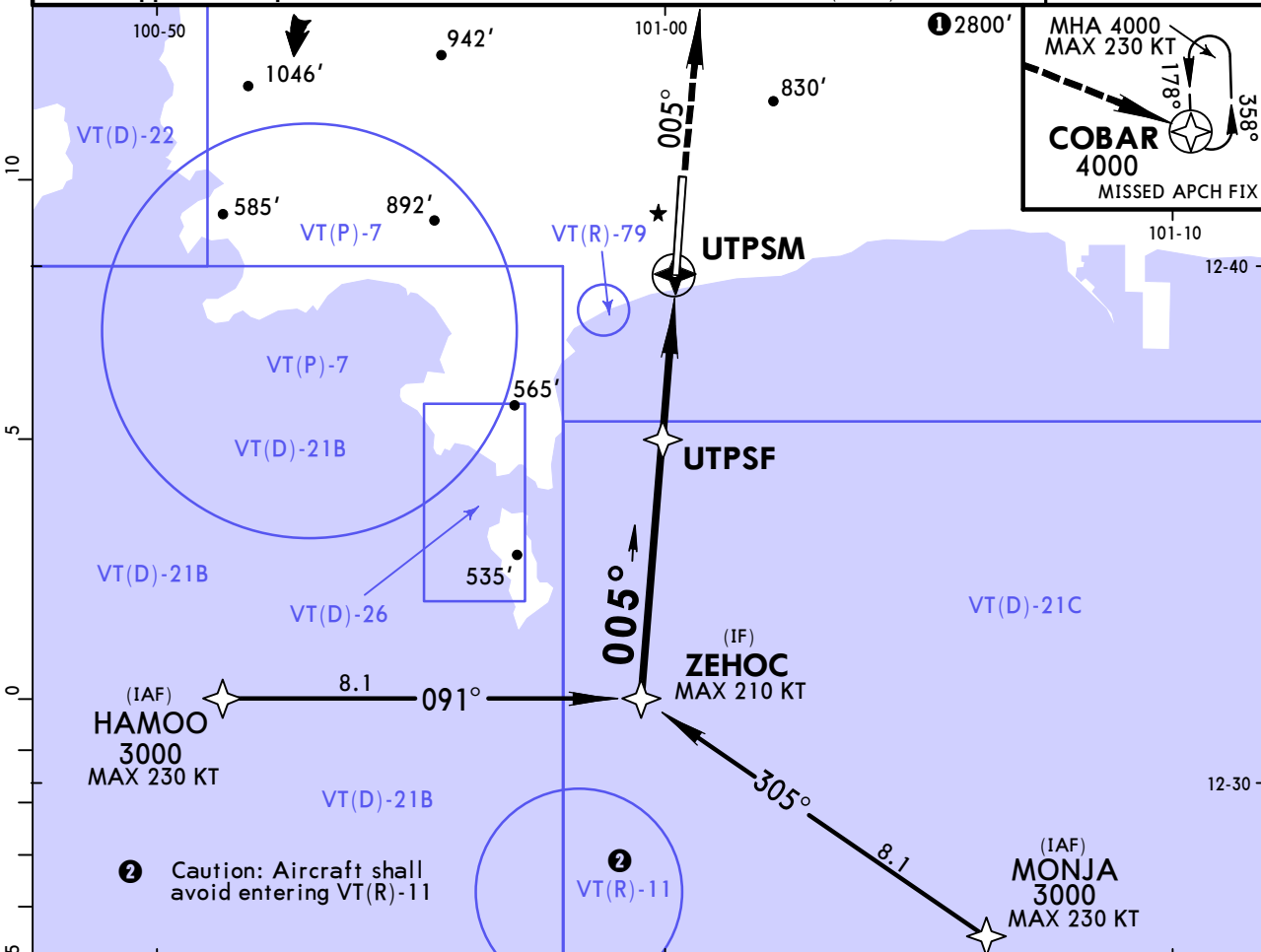
RAYONG, THAILAND
RNAV (GNSS) Rwy 36

U-TAPAO Approach (R)		U-TAPAO Tower		Ground	
119.7	134.5	118.1	118.3	121.9	
RNAV	Final Apch Crs 005°	Procedure Alt UTPSF 1100' (1076')	LNAV/VNAV DA(H) 480' (456')	Apt Elev 59'	Rwy 24'

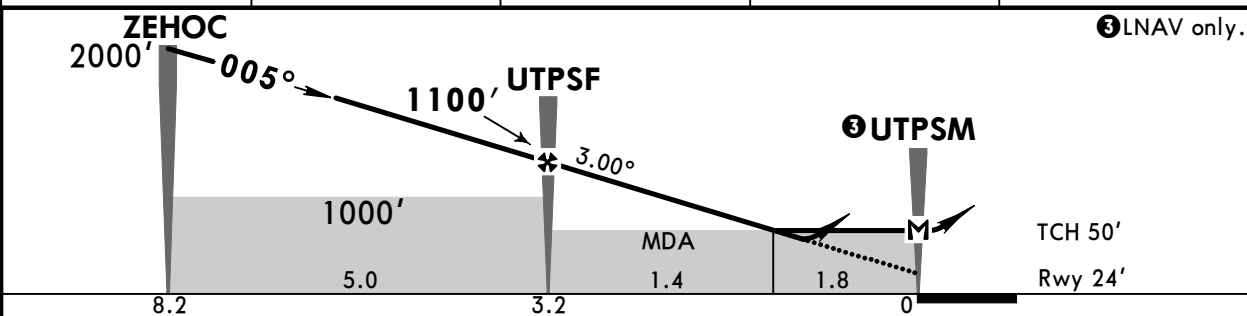


MISSED APCH: No turn before MAP. Climb on track 005° to 2500', then turn RIGHT direct to COBAR at 4000' and hold or as directed by ATC.

Alt Set: hPa Rwy Elev: 1 hPa Trans level: FL 130 Trans alt: 11000'
 1. RNP approach required. 2. Baro-VNAV not authorized below 15°C (59°F).



NM to NEXT WPT	FAF	3.0	2.0	1.5
ALTITUDE	1100'	1020'	705'	560'



Gnd speed-Kts	70	90	100	120	140	160	SALS	005°	2500'	RT	COBAR
Descent Angle 3.00°	372	478	531	637	743	849					
LNAV/VNAV: MAP at DA							PAPI				
LNAV: MAP at UTPSM											

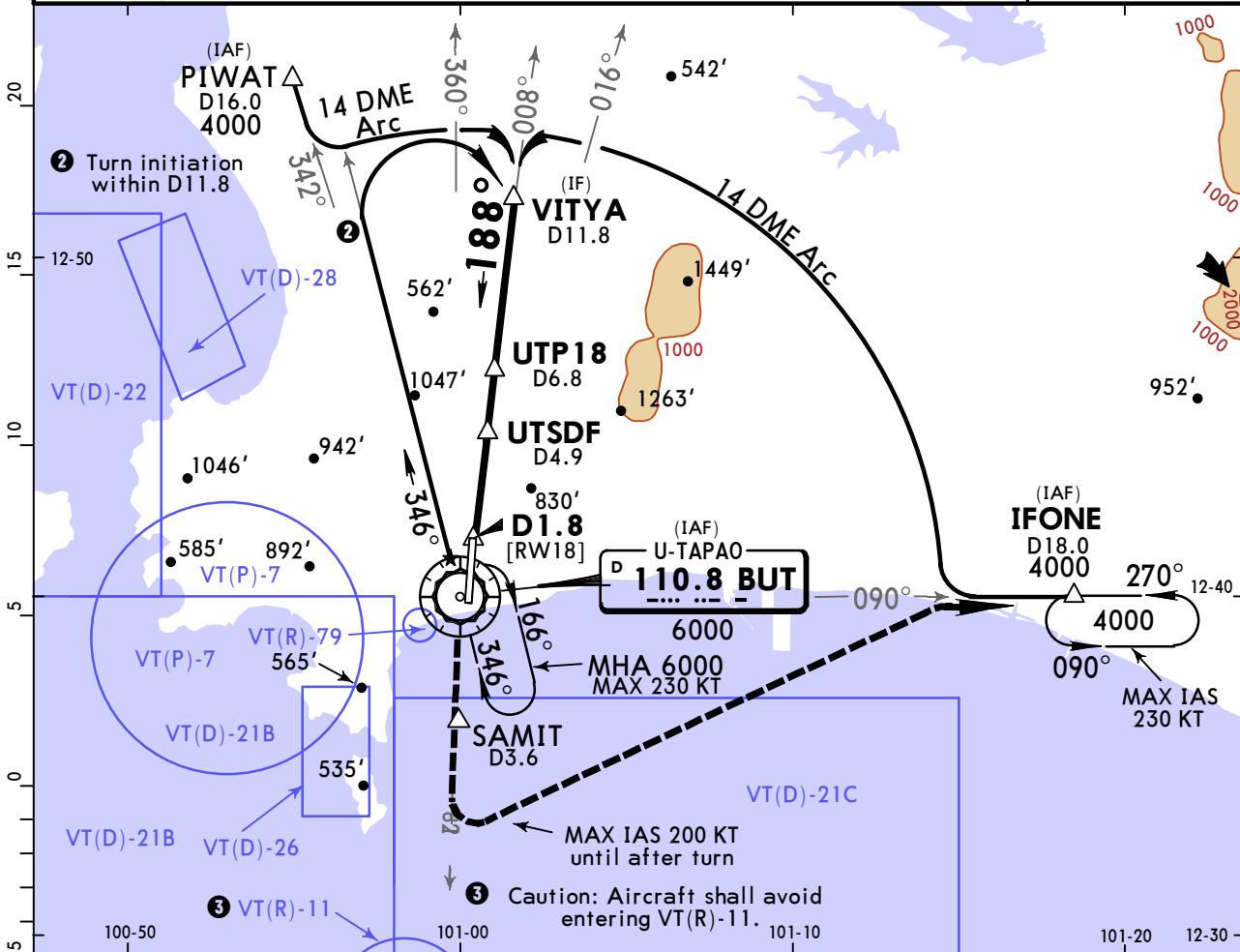
STRAIGHT-IN LANDING RWY36				CIRCLE-TO-LAND			
LNAV/VNAV		LNAV					
DA(H) 480' (456')		MDA(H) 640' (616')					
ALS out		ALS out		Max Kts	MDA(H)		
A		1200m	1600m	100	1200'(1141') -2400m		
B	2400m			135			
C		2800m		180			
D		3200m		205	1450'(1391') -4800m		

VTBU/UTP
U-TAPOA PATTAYA INTL

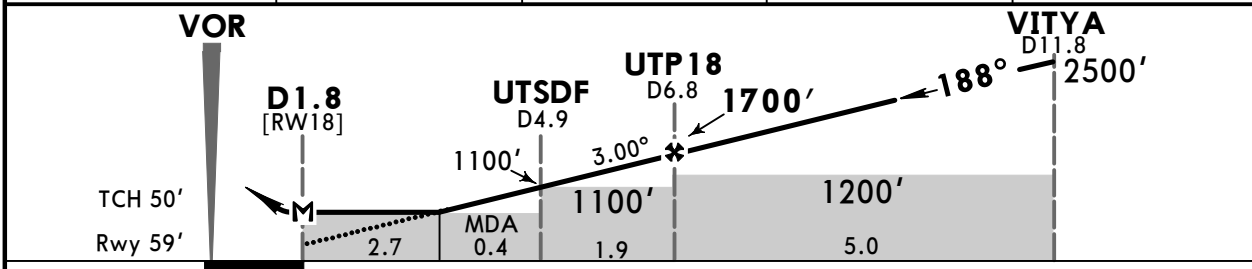
JEPPESEN
2 DEC 16 (13-1) Eff 8 Dec

RAYONG, THAILAND
VOR Rwy 18

U-TAPOA Approach (R) 119.7 134.5		U-TAPOA Tower 118.1 118.3		Ground 121.9
VOR BUT 110.8	Final Apch Crs 188°	Procedure Alt UTP18 1700' (1641')	MDA(H) 960' (901')	Apt Elev 59' Rwy 59'
MISSED APCH: No turn before MAP. Climb to intercept outbound on BUT VOR R-182 to SAMIT. After SAMIT and passing 1500', turn LEFT to intercept outbound BUT VOR R-090, then proceed to IFONE and hold or as directed by ATC. Speed restricted to MAX IAS 200 KT until after turn.				
Alt Set: hPa Rwy Elev: 2 hPa Trans level: FL 130 Trans alt: 11000'				MSA BUT VOR 1 2800'



BUT DME	4.5	5.0	6.0	FAF
ALTITUDE	960'	1120'	1435'	1700'



Gnd speed-Kts	70	90	100	120	140	160	PAPI ALS	BUT on 110.8 R-182	SAMIT
Descent Angle	3.00°	372	478	531	637	849			
MAP at D1.8									

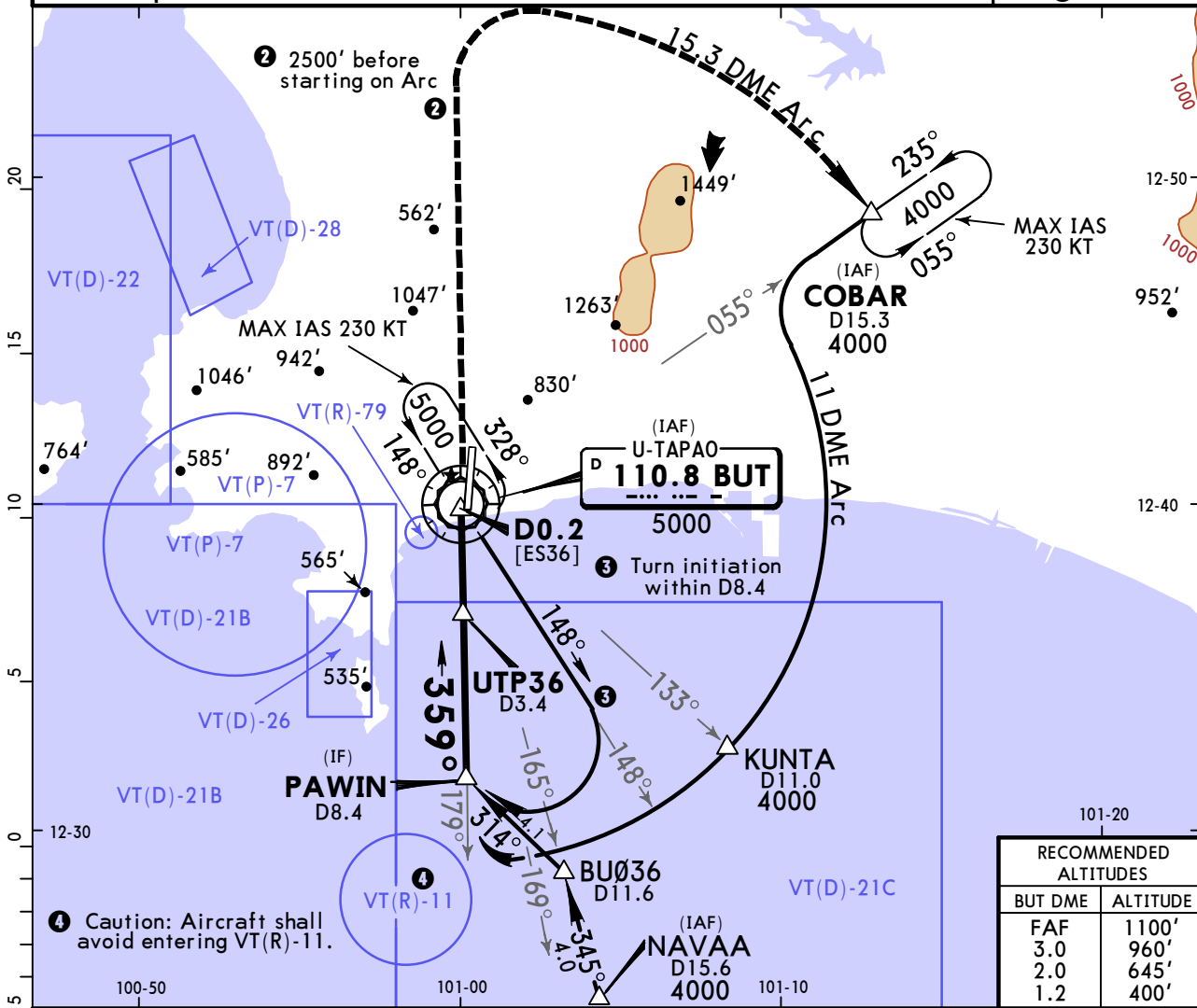
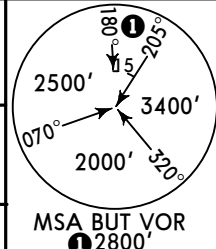
STRAIGHT-IN LANDING RWY 18		CIRCLE-TO-LAND	
MDA(H) 960' (901')		Max Kts	
ALS out		MDA(H)	
A		100	1200' (1141') - 2000m
B	2000m	135	1200' (1141') - 2400m
C	4400m	180	1450' (1391') - 4800m
D	4800m	205	

VTBU/UTP
U-TAPAO PATTAYA INTL

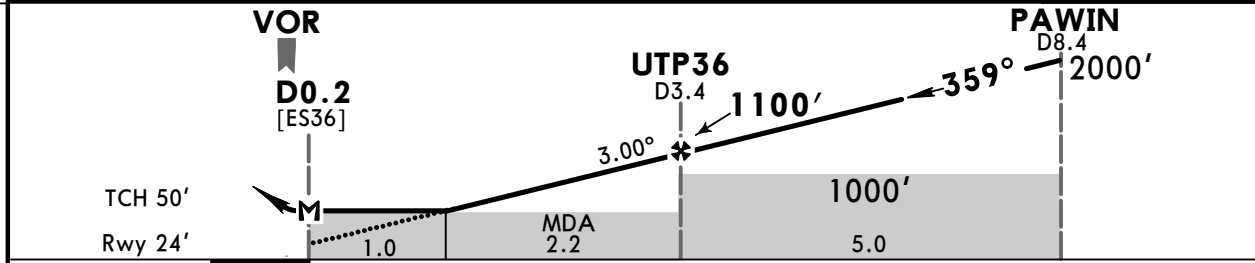
JEPPESEN
 2 DEC 16 (13-2) Eff 8 Dec

RAYONG, THAILAND
VOR Rwy 36

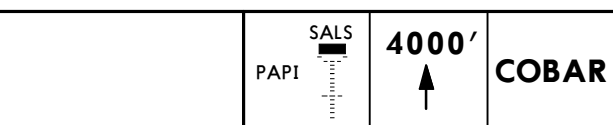
U-TAPAO Approach (R)		U-TAPAO Tower		Ground	
119.7	134.5	118.1	118.3	121.9	
VOR BUT	Final Apch Crs	Procedure Alt	MDA(H)	Apt Elev 59'	
110.8	359°	1100' (1076')	400' (376')	Rwy 24'	
MISSED APCH: No turn before MAP. Climb to COBAR at 4000' via 15.3 DME Arc and hold or as directed by ATC. Reach an altitude of 2500' before starting on the Arc.					
Alt Set: hPa		Rwy Elev: 1 hPa		Trans level: FL 130	
1. DME required.				Trans alt: 11000'	



RECOMMENDED ALTITUDES	
BUT DME	ALTITUDE
FAF	1100'
3.0	960'
2.0	645'
1.2	400'



Gnd speed-Kts	70	90	100	120	140	160
Descent Angle 3.00°	372	478	531	637	743	849
MAP at D0.2						



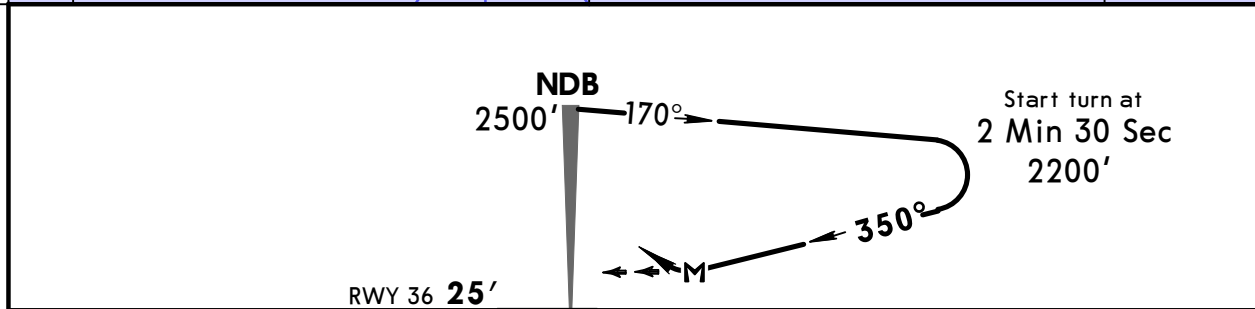
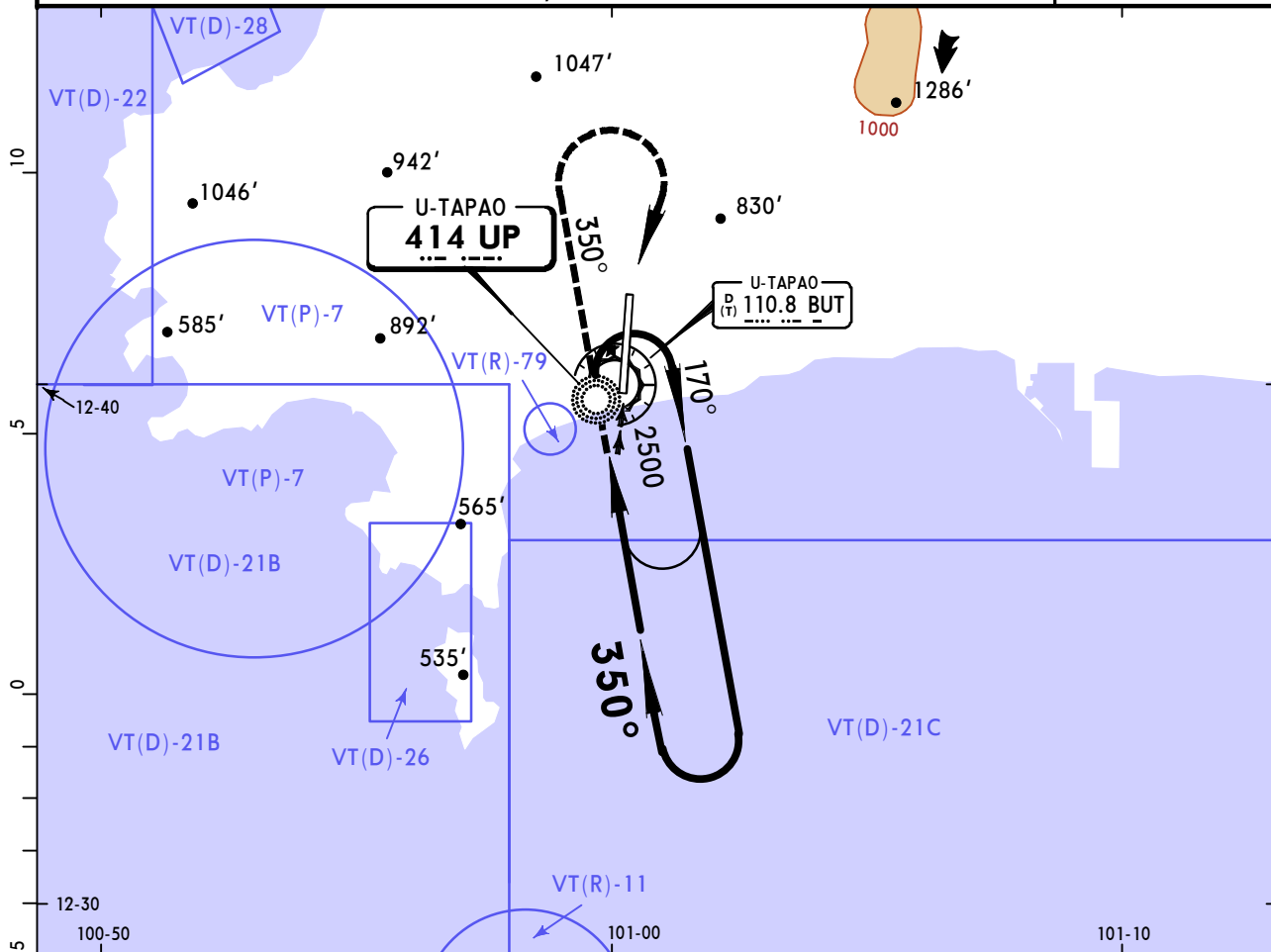
STRAIGHT-IN LANDING RWY 36			CIRCLE-TO-LAND		
MDA(H) 400' (376')			MDA(H)		
ALS out			Max Kts		
A			100	1200' (1141') - 2000m	
B	1200m	1600m	135	1200' (1141') - 2400m	
C			180	1450' (1391') - 4800m	
D	2000m		205		

VTBU/UTP
U-TAPAO PATTAYA INTL

JEPPESEN
 2 DEC 16 **(16-1)** Eff 8 Dec

RAYONG, THAILAND
NDB Rwy 36

U-TAPAO Approach (R) 119.7 134.5		U-TAPAO Tower 118.1 118.3		Ground 121.9	
NDB UP 414	Final Apch Crs 350°	No FAF	MDA(H) 750' (725')	Apt Elev 59' RWY 36 25'	
MISSED APCH: Upon reaching MDA(H) climb on track 350° to UP NDB then climb on bearing 350° to 1200' then turn RIGHT climbing to UP NDB to 2500' and hold.					
Alt Set: hPa Rwy Elev: 1 hPa		Trans level: FL 130		Trans alt: 11000'	
1. Final inbound track offset 15° from runway centerline.					MSA UP NDB



				SALS		UP
				PAPI		414

STRAIGHT-IN LANDING RWY 36			CIRCLE-TO-LAND	
MDA(H) 750' (725')				
		ALS out	Max Kts	MDA(H)
A	1.2 km	RVR 1.5 km VIS 1.6 km	100	750' (691') -1.6 km
B			135	1190' (1131') -2.4 km
C	3.2 km		180	1290' (1231') -4.8 km
D	3.6 km		205	1450' (1391') -4.8 km

PANS OPS

Chart changes since cycle 01-2019

ADD = added chart, REV = revised chart, DEL = deleted chart.

ACT	PROCEDURE IDENT	INDEX	REV DATE	EFF DATE
-----	-----------------	-------	----------	----------

RAYONG, (U-TAPAO RAYONG PATTAYA INTL - VTBU)

TERMINAL CHART CHANGE NOTICES

Chart Change Notices for Airport VTBU

Type: Terminal

Effectivity: Permanent

Begin Date: Immediately

End Date: No end date

Airport name updated to U-TAPAO RAYONG PATTAYA INTL AIRPORT.