

## List of pages in this Trip Kit

Trip Kit Index

Airport Information For LTAF

Terminal Charts For LTAF

Revision Letter For Cycle 23-2019

Change Notices

Notebook

## General Information

Location: ADANA TUR  
ICAO/IATA: LTAF / ADA  
Lat/Long: N36° 58.9', E035° 16.8'  
Elevation: 65 ft

Airport Use: Public  
Daylight Savings: Not Observed  
UTC Conversion: -3:00 = UTC  
Magnetic Variation: 3.2° E

Fuel Types: 100-130 Octane, Jet A-1  
Repair Types: Minor Airframe, Minor Engine  
Customs: Yes  
Airport Type: IFR  
Landing Fee: Yes  
Control Tower: Yes  
Jet Start Unit: No  
LLWS Alert: No  
Beacon: Yes

Sunrise: 0418 Z  
Sunset: 1429 Z

## Runway Information

Runway: 05  
Length x Width: 9022 ft x 148 ft  
Surface Type: asphalt  
TDZ-Elev: 54 ft  
Lighting: Edge, ALS, REIL

Runway: 23  
Length x Width: 9022 ft x 148 ft  
Surface Type: asphalt  
TDZ-Elev: 65 ft  
Lighting: Edge, ALS, REIL

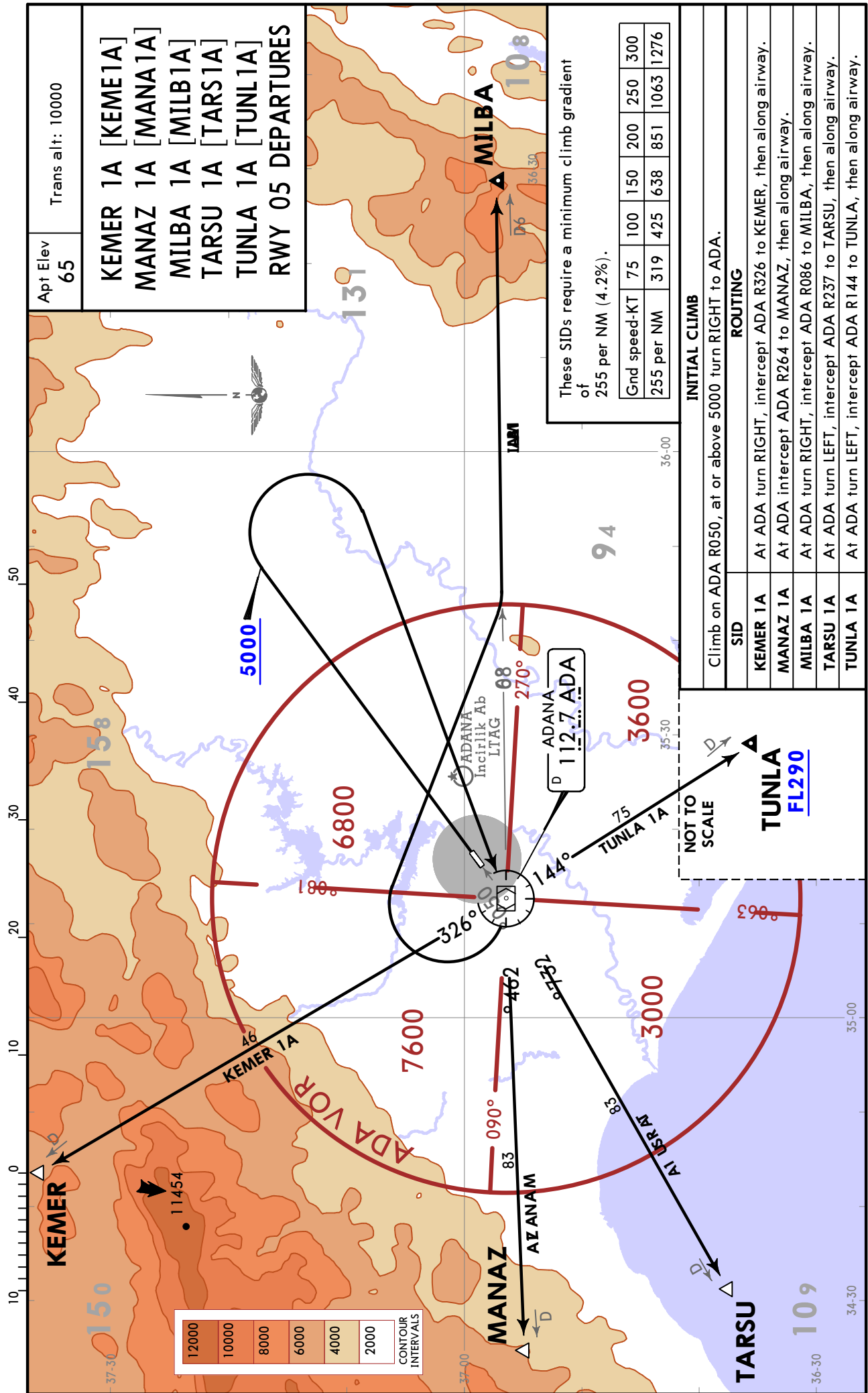
## Communication Information

ATIS: 119.225  
Adana Tower: 131.100 Air-Ground  
Adana Tower: 121.100  
Adana Ground: 121.900  
Incirlik Approach: 118.300



**LTAf/ADA**  
**ADANA**

**ADANA, TURKEY**  
**SID**





**LTAF/ADA**

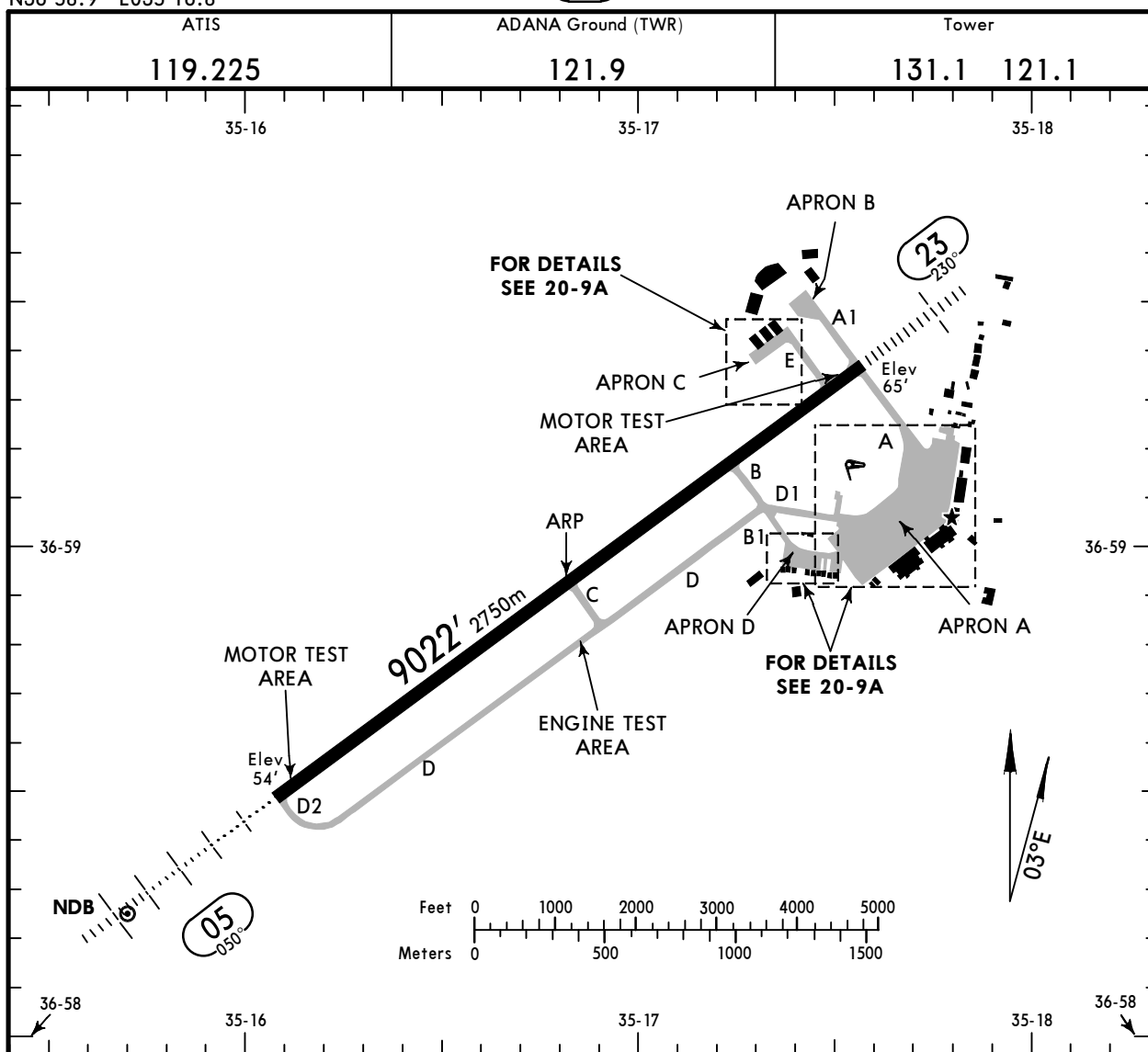
Apt Elev **65'**  
N36 58.9 E035 16.8

**JEPPesen**

7 JUN 19 **(20-9) Eff 20 Jun**

**ADANA, TURKEY**

**ADANA INTL**



**ADDITIONAL RUNWAY INFORMATION**

RWY	USABLE LENGTHS	LANDING BEYOND	TAKE-OFF	WIDTH
05 23	HIRL (50m) HIALS REIL PAPI-L (angle 3.0°) RVR	8111' 2472m	<b>1</b>	147' 45m

**1 TAKE-OFF RUN AVAILABLE**

**RWY 23:**

- From rwy head 9022' (2750m)
- twy E int 8530' (2600m)
- twy B int 7054' (2150m)
- twy C int 4528' (1380m)

**LOCAL TRAFFIC REGULATIONS**

When RWY 05 is used for both landing and departure and subject to infringement of critical and sensitive areas of GP, pilots of ACFT on the ILS course for RWY 05 shall be cautious about that momentary distortions or interruptions may be experienced in GP broadcast.

	TAKE-OFF		
	Low Visibility Take-off		
	Day: RL & RCLM Night: RL	Day: RL or RCLM Night: RL	Adequate vis ref (Day only)
A	RVR 300m	400m	500m
B			
C			
D			

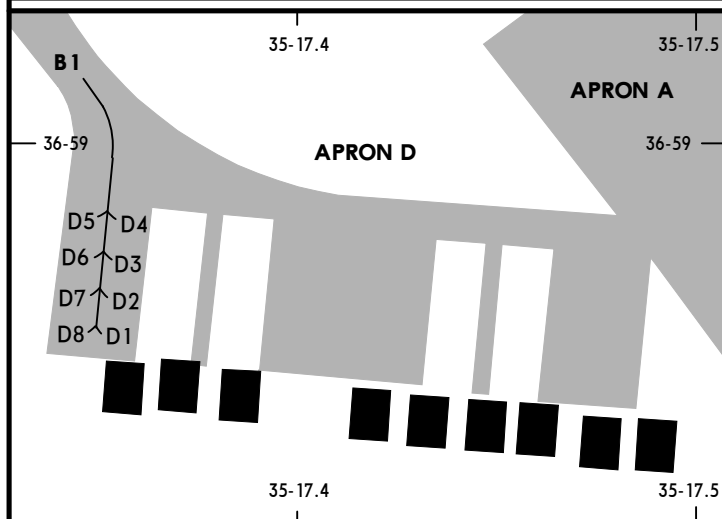
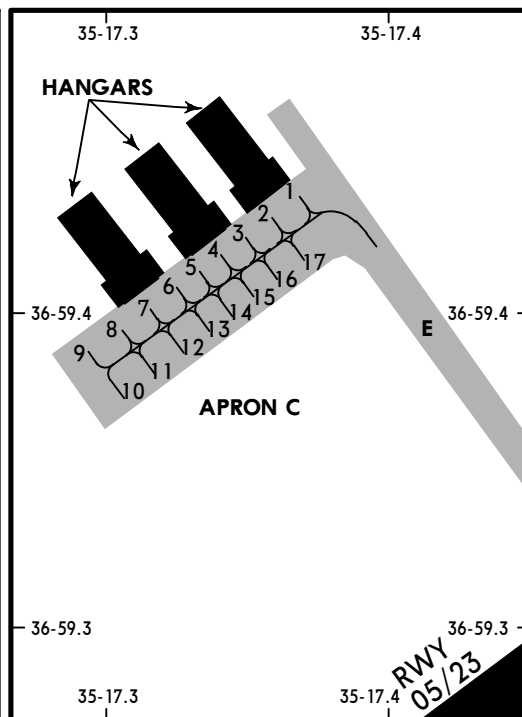
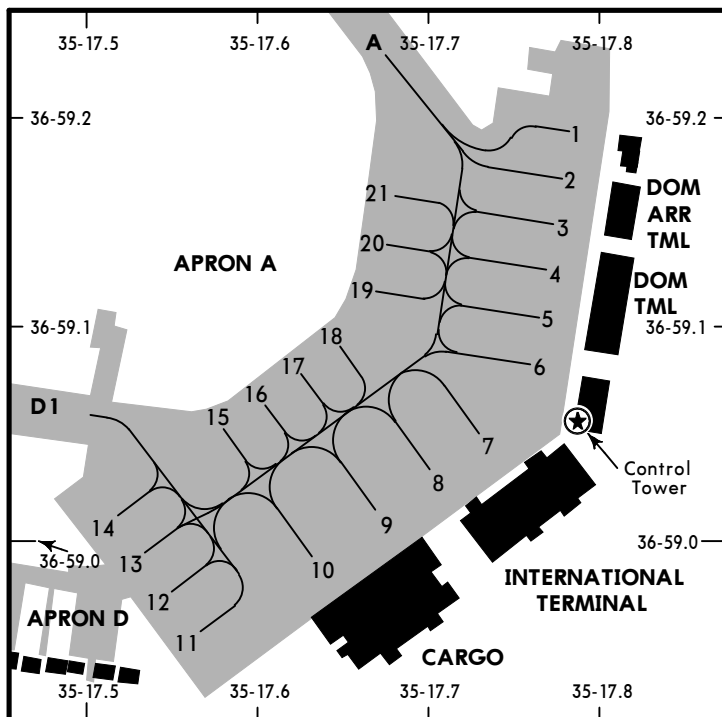
LTAF/ADA

JEPPESEN

ADANA, TURKEY

7 JUN 19 (20-9A) Eff 20 Jun

ADANA INTL



**INS COORDINATES**

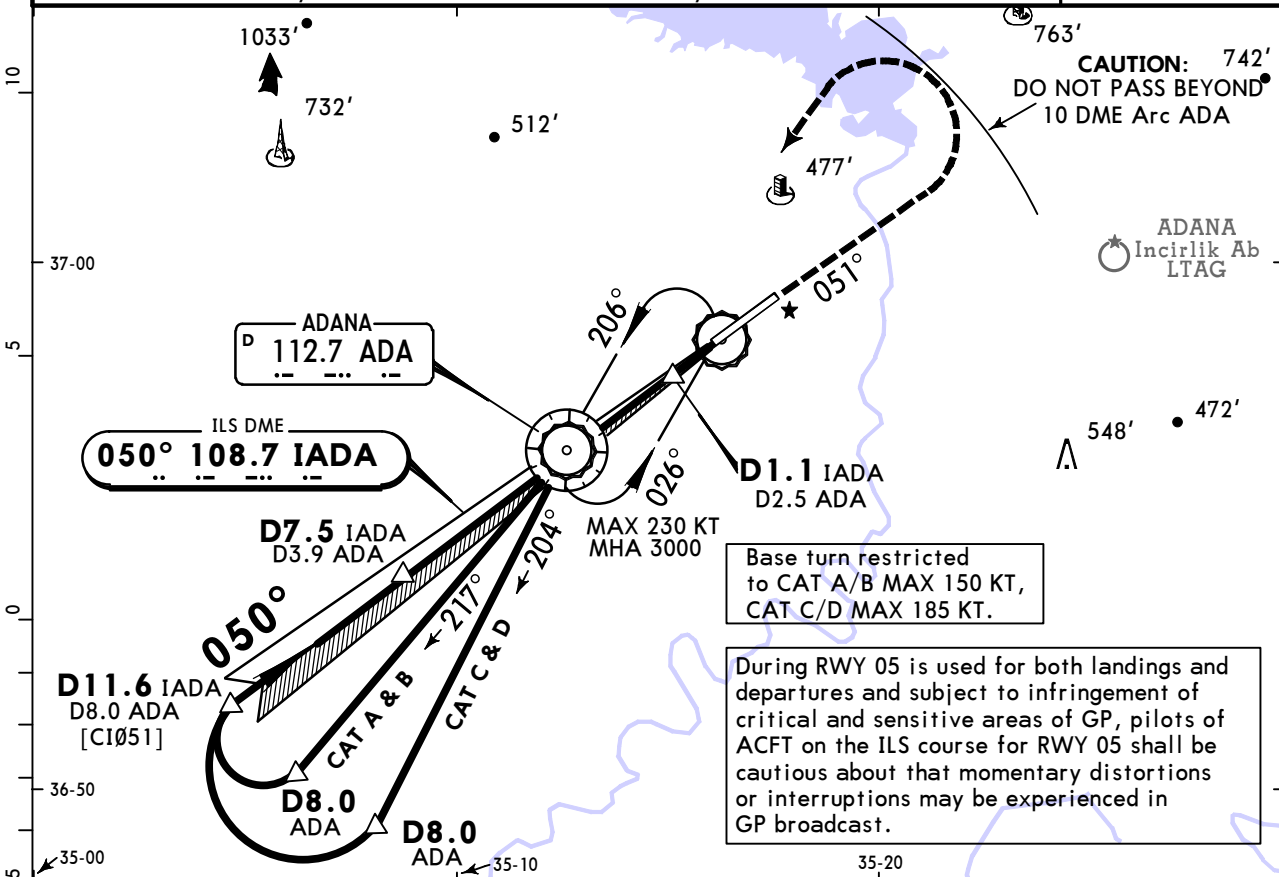
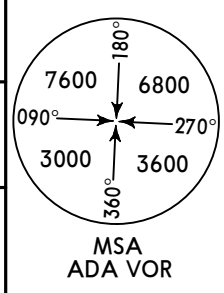
STAND No.	COORDINATES	STAND No.	COORDINATES
<b>APRON A</b>		<b>APRON C</b>	
1 thru 3	N36 59.2 E035 17.8	1 thru 3	N36 59.4 E035 17.4
4 thru 6	N36 59.1 E035 17.8	4 thru 14	N36 59.4 E035 17.3
7 thru 9	N36 59.0 E035 17.7	15 thru 17	N36 59.4 E035 17.4
10, 11	N36 58.9 E035 17.6	<b>APRON D</b>	
12 thru 14	N36 59.0 E035 17.5	D1 thru D8	N36 59.0 E035 17.4
15 thru 18	N36 59.1 E035 17.6		
19, 20	N36 59.1 E035 17.7		
21	N36 59.2 E035 17.7		

**LTAf/ADA**  
**ADANA INTL**

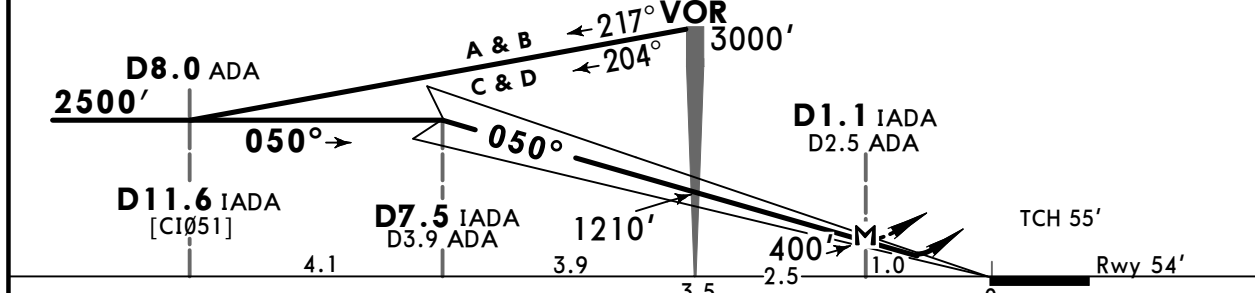
**JEPPESSEN**  
24 MAY 19 **(21-1)**

**ADANA, TURKEY**  
**ILS DME 1 Rwy 05**

ATIS <b>119.225</b>	INCIRLIK Approach (R) <b>118.3</b>	ADANA Tower <b>131.1 121.1</b>	Ground <b>121.9</b>
LOC IADA <b>108.7</b>	Final Apch Crs <b>050°</b>	GS <b>D7.5 IADA</b> <b>2500'</b> (2446')	ILS DA(H) <b>304'</b> (250')
MISSED APCH: Climb on R-051 to 1000' within D10.0 ADA (no turn before D7.0 ADA), then turn LEFT and climb to cross VOR at 3000' and hold.			Apt Elev 65' Rwy 54'
Alt Set: hPa	Rwy Elev: 2 hPa	Trans level: By ATC	Trans alt: 10000'



LOC (GS out)	IADA DME	7.0	6.0	5.0	4.0	3.0	2.0
	ALTITUDE	2310'	1990'	1670'	1360'	1040'	720'



Gnd speed-Kts	70	90	100	120	140	160	HIALS REIL PAPI	1000' ADA on 112.7 within R-051 D10.0 ADA
ILS GS or LOC Descent Angle	3.00°	372	478	531	637	743		
MAP at D1.1 IADA/D2.5 ADA								

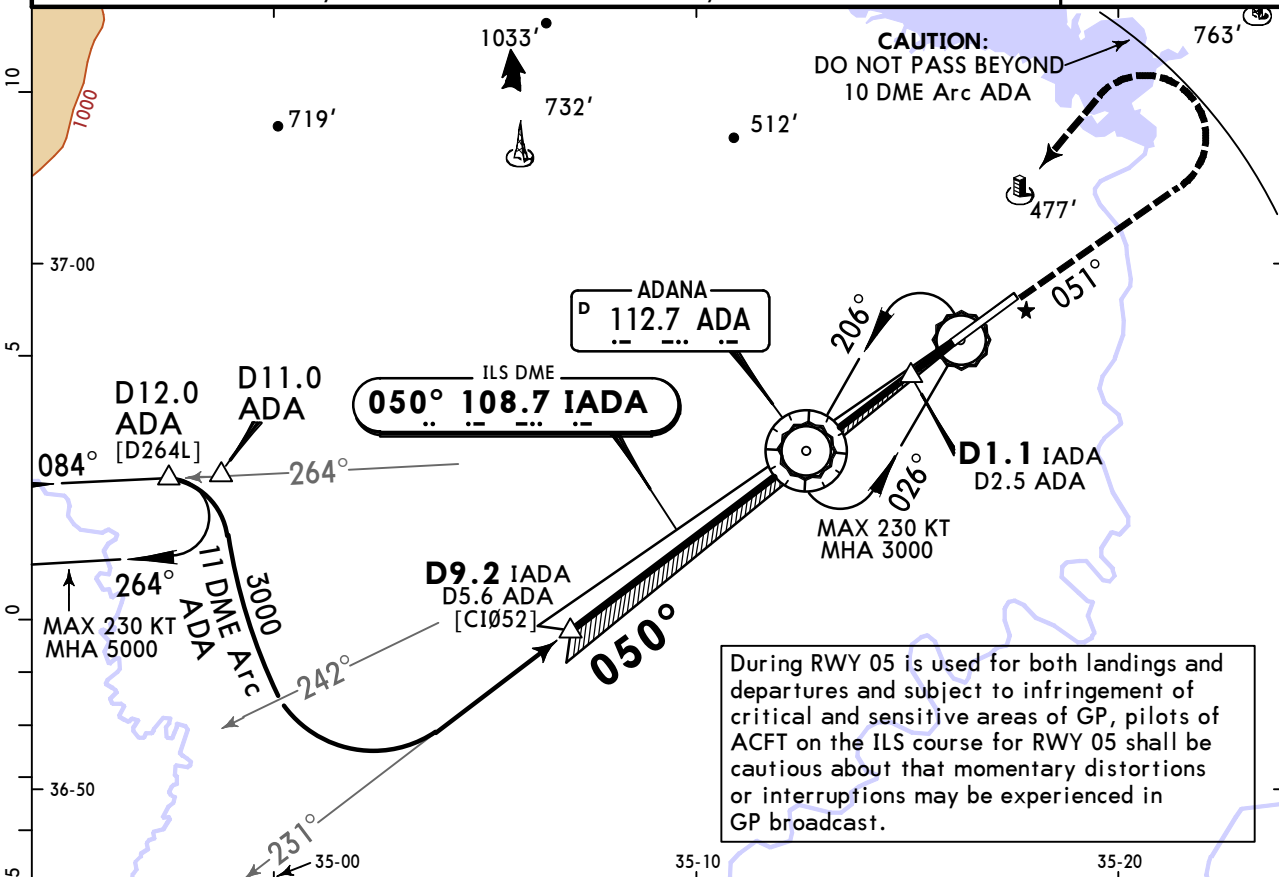
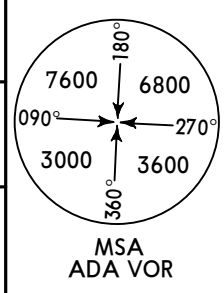
PANS OPS	STRAIGHT-IN LANDING RWY 05				CIRCLE-TO-LAND CAUTION: Not authorized South of airport, or by ATC		
	ILS		LOC (GS out) CDFA		Max Kts	MDA(H) VIS	
	DA(H) 304' (250')		DA/MDA(H) 400' (346')				
	FULL	TDZ or CL out	ALS out	ALS out	100	1200' (1135')	1500m
A				RVR 1500m	135	1200' (1135')	1600m
B					180	1200' (1135')	2400m
C	RVR 550m	RVR 550m <b>I</b>	RVR 1300m	RVR 900m	205	1200' (1135')	3600m
D							

**LTAf/ADA**  
**ADANA INTL**

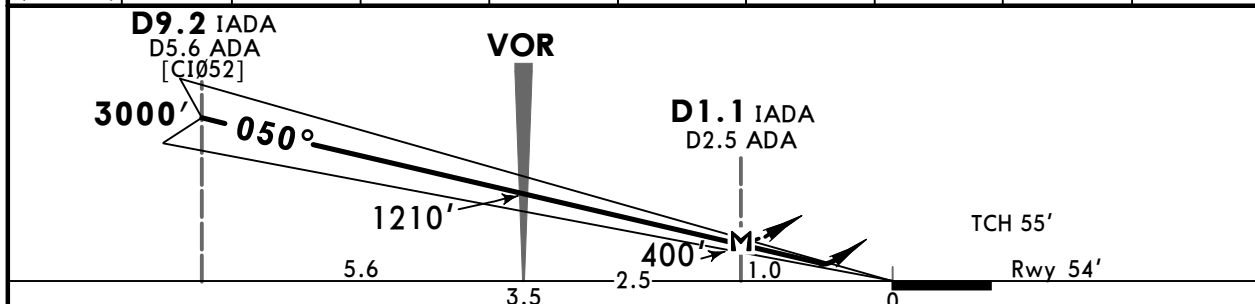
**JEPPESSEN**  
24 MAY 19 **(21-2)**

**ADANA, TURKEY**  
**ILS DME 2 Rwy 05**

ATIS <b>119.225</b>	INCIRLIK Approach (R) <b>118.3</b>	ADANA Tower <b>131.1 121.1</b>	Ground <b>121.9</b>
LOC IADA <b>108.7</b>	Final Apch Crs <b>050°</b>	GS <b>D9.2 IADA</b> 3000' (2946')	ILS DA(H) <b>304' (250')</b>
MISSED APCH: Climb on R-051 to 1000' within D10.0 ADA (no turn before D7.0 ADA), then turn LEFT and climb to cross VOR at 3000' and hold.			Apt Elev 65' Rwy 54'
Alt Set: hPa	Rwy Elev: 2 hPa	Trans level: By ATC	Trans alt: 10000'



LOC (GS out)	IADA DME	9.0	8.0	7.0	6.0	5.0	4.0	3.0	2.0
	ALTITUDE	2950'	2630'	2310'	1990'	1670'	1360'	1040'	720'



Gnd speed-Kts	70	90	100	120	140	160	HI ALS REIL PAPI 1000' ADA on 112.7 within D10.0 R-051 ADA	
ILS GS or LOC Descent Angle	3.00°	372	478	531	637	743		849
MAP at D1.1 IADA/D2.5 ADA								

PANS OPS	STRAIGHT-IN LANDING RWY 05				CIRCLE-TO-LAND CAUTION: Not authorized South of airport, or by ATC	
	ILS		LOC (GS out) CDFA		Max Kts	MDA(H) VIS
	DA(H) 304' (250')		DA/MDA(H) 400' (346')			
	FULL	TDZ or CL out	ALS out	ALS out	100	1200' (1135') 1500m
A				RVR 1500m	135	1200' (1135') 1600m
B					180	1200' (1135') 2400m
C	RVR 550m	RVR 550m <b>I</b>	RVR 1300m	RVR 900m	205	1200' (1135') 3600m
D				RVR 1600m		

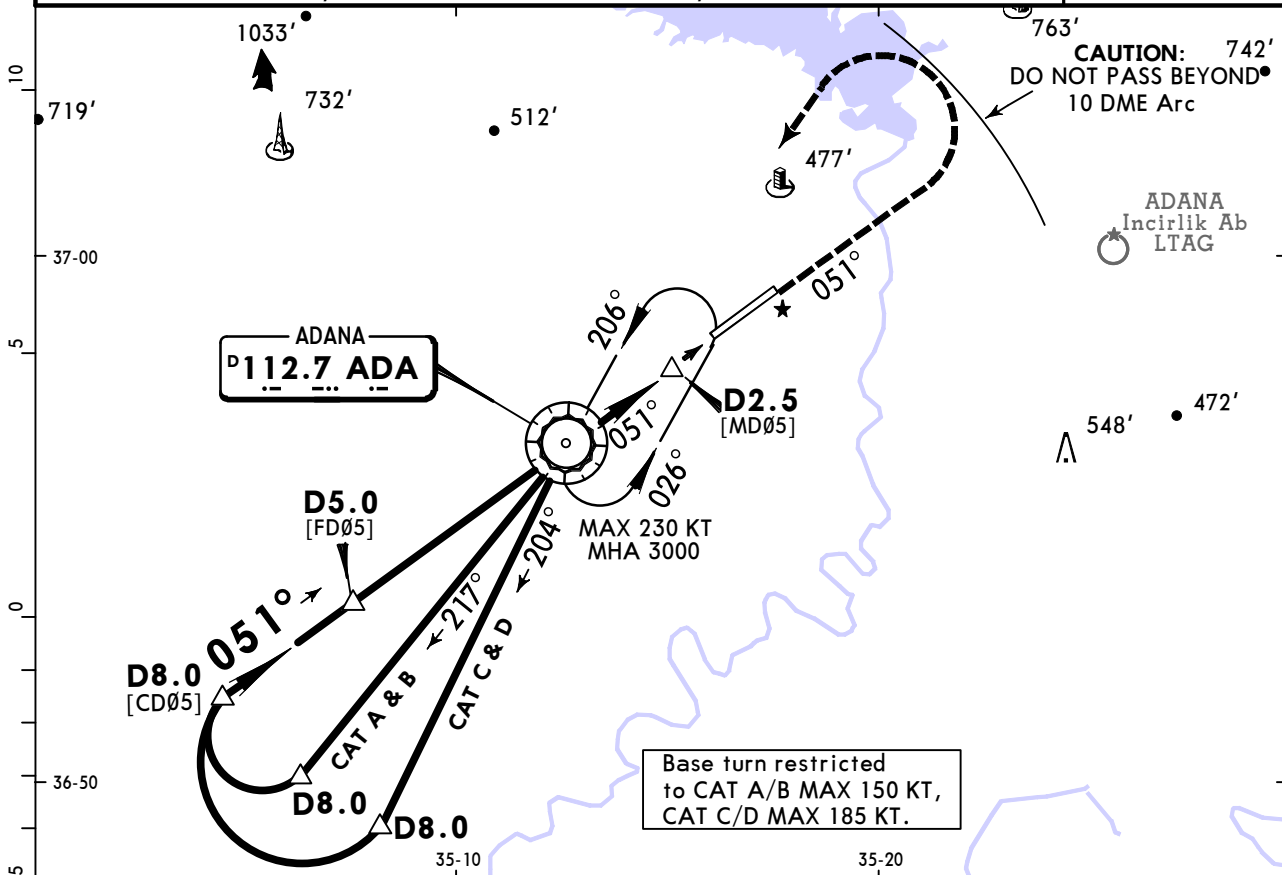
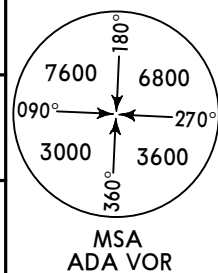
**I** W/o HUD/AP/FD: RVR 750m.

**LTAF/ADA**  
**ADANA INTL**

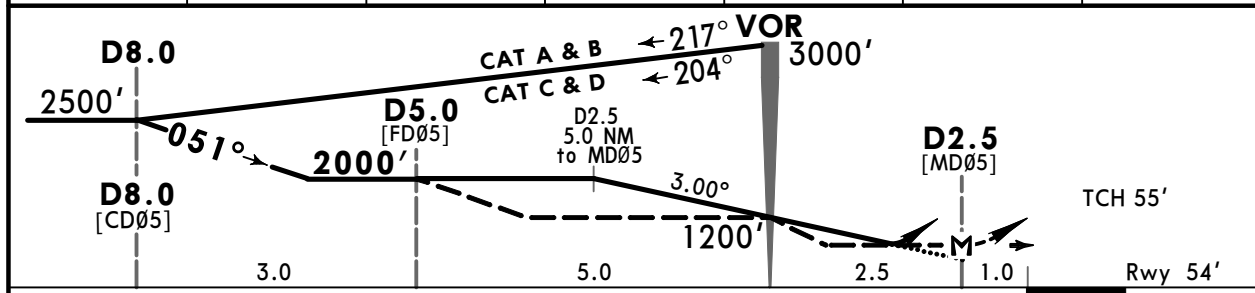
**JEPPESEN**  
24 MAY 19 **(23-1)**

**ADANA, TURKEY**  
**VOR DME 1 Rwy 05**

ATIS <b>119.225</b>	INCIRLIK Approach (R) <b>118.3</b>	ADANA Tower <b>131.1 121.1</b>	Ground <b>121.9</b>
VOR ADA <b>112.7</b>	Final Apch Crs <b>051°</b>	Minimum Alt <b>D5.0</b> 2000' (1946')	DA/MDA(H) <b>400'</b> (346')
MISSED APCH: Climb on R-051 to 1000' within D10.0 ADA (no turn before D7.0 ADA), then turn LEFT and climb to cross VOR at 3000' and hold.			Apt Elev 65' Rwy 54'
Alt Set: hPa	Rwy Elev: 2 hPa	Trans level: By ATC	Trans alt: 10000'



ADA DME	2.5	2.0	1.0	0.0	1.0 after ADA	2.0 after ADA
ALTITUDE	2000'	1850'	1530'	1200'	890'	570'



Gnd speed-Kts	70	90	100	120	140	160
Descent Angle	3.00°	372	478	531	637	743
MAP at D2.5						

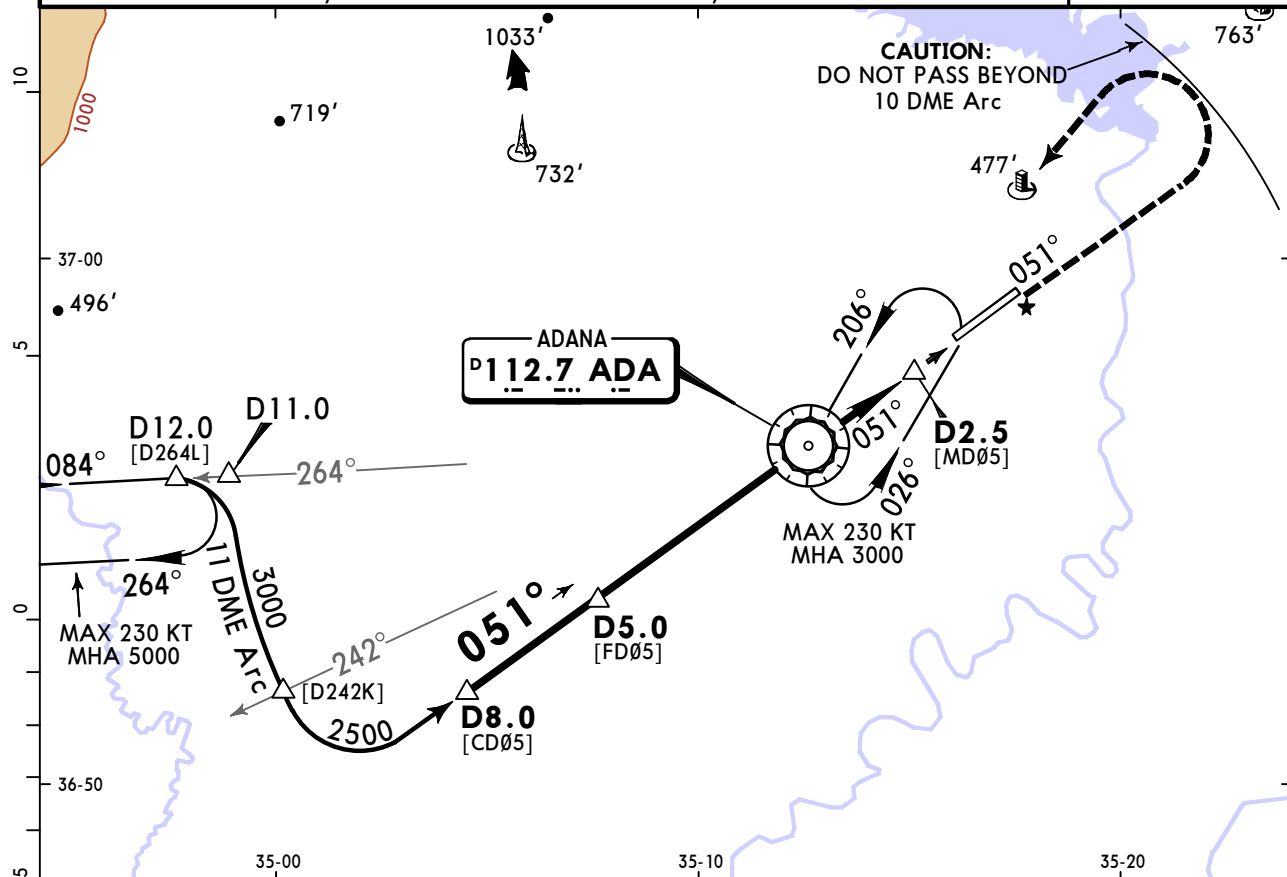
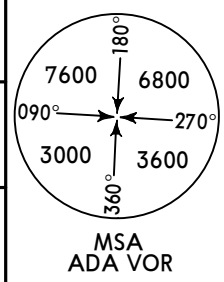
<b>Standard</b>				<b>STRAIGHT-IN LANDING RWY 05</b>		<b>CIRCLE-TO-LAND CAUTION:</b> Not authorized South of airport, or by ATC	
CDFA DA/MDA(H) <b>400'</b> (346')		non-CDFA MDA(H) <b>400'</b> (346')		Max Kts		MDA(H) VIS	
A	ALS out	ALS out	ALS out	100	1200'	(1135')	1500m
B	RVR 1500m	RVR 1100m	RVR 1800m	135	1200'	(1135')	1600m
C	RVR 900m	RVR 1600m	RVR 1300m	180	1200'	(1135')	2400m
D	RVR 1600m	RVR 1300m	RVR 2000m	205	1200'	(1135')	3600m

# LTAF/ADA ADANA INTL

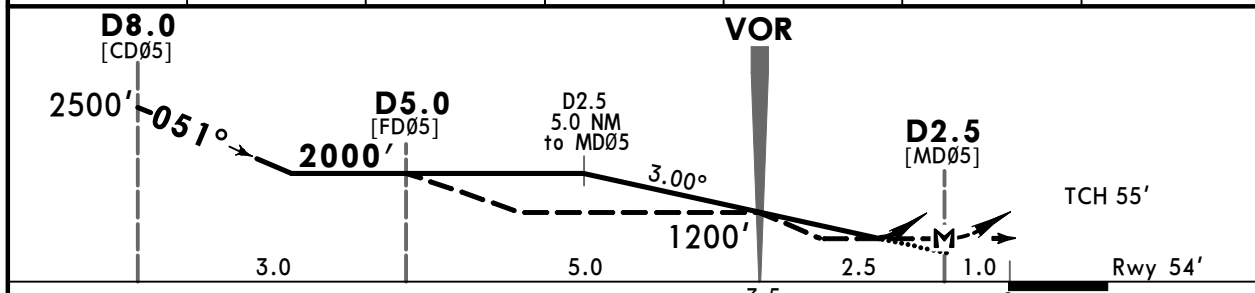
**JEPPESSEN**  
24 MAY 19 **(23-2)**

# ADANA, TURKEY VOR DME 2 Rwy 05

ATIS <b>119.225</b>	INCIRLIK Approach (R) <b>118.3</b>	ADANA Tower <b>131.1 121.1</b>	Ground <b>121.9</b>
VOR ADA <b>112.7</b>	Final Apch Crs <b>051°</b>	Minimum Alt <b>D5.0</b> 2000' (1946')	DA/MDA(H) <b>400'</b> (346')
MISSED APCH: Climb on R-051 to 1000' within D10.0 ADA (no turn before D7.0 ADA), then turn LEFT and climb to cross VOR at 3000' and hold.			Apt Elev 65' Rwy 54'
Alt Set: hPa	Rwy Elev: 2 hPa	Trans level: By ATC	Trans alt: 10000'



ADA DME	2.5	2.0	1.0	0.0	1.0 after ADA	2.0 after ADA
ALTITUDE	2000'	1850'	1530'	1200'	890'	570'



Gnd speed-Kts	70	90	100	120	140	160	HIALS REIL PAPI	1000' ADA on 112.7 within D10.0 R-051	
Descent Angle	3.00°	372	478	531	637	743			849
MAP at D2.5									

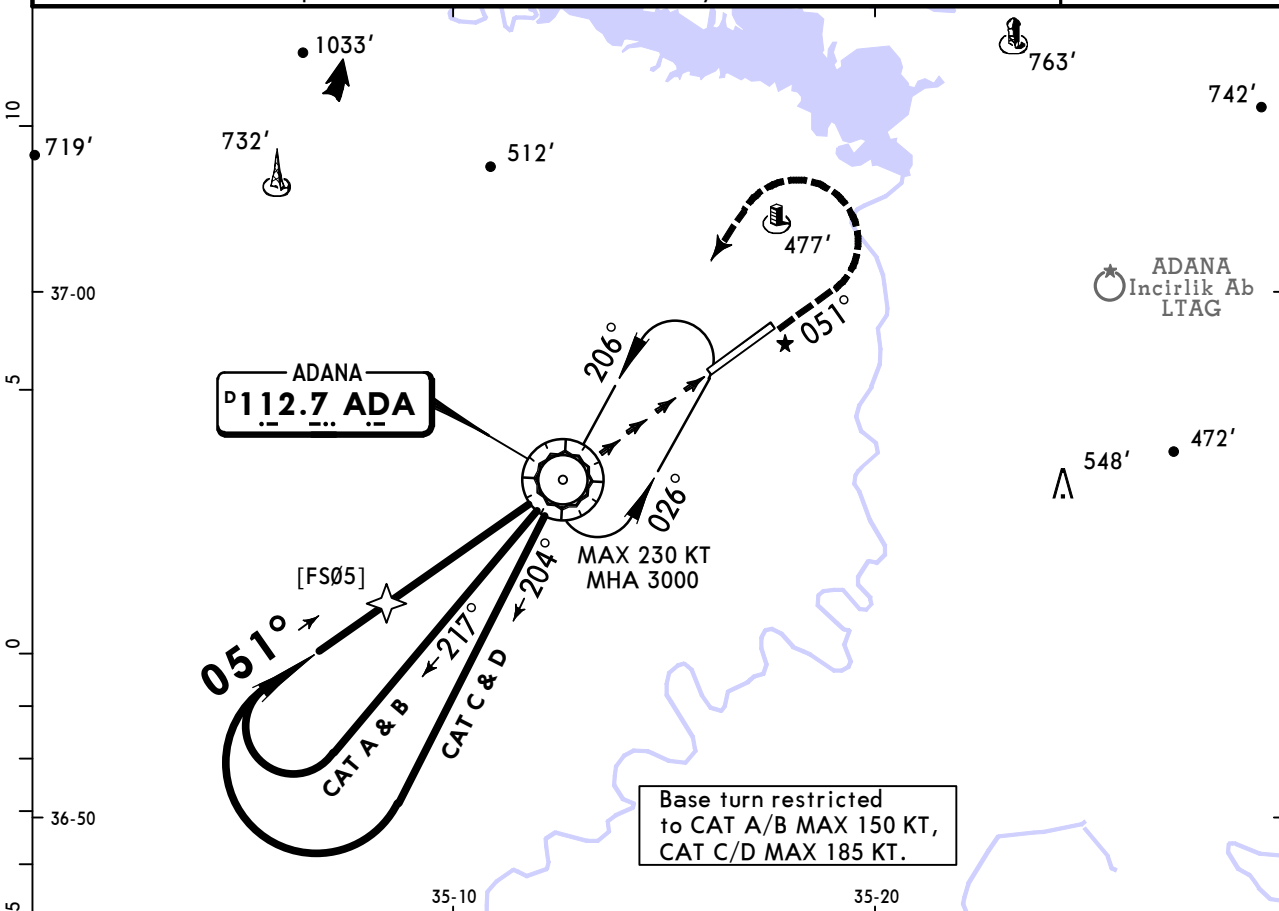
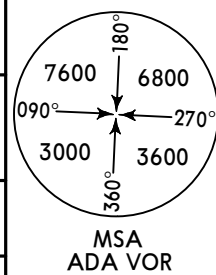
PANS OPS	<b>Standard</b> STRAIGHT-IN LANDING RWY 05				CIRCLE-TO-LAND CAUTION: Not authorized South of airport, or by ATC	
	CDFA DA/MDA(H) <b>400'</b> (346')		non-CDFA MDA(H) <b>400'</b> (346')		Max Kts	
	ALS out		ALS out		100	1200' (1135') 1500m
	A	RVR 1500m	RVR 1100m	RVR 1800m	135	1200' (1135') 1600m
	B	RVR 900m	RVR 1300m	RVR 2000m	180	1200' (1135') 2400m
C	RVR 1600m	RVR 1300m	RVR 2000m	205	1200' (1135') 3600m	
D						

**LTAf/ADA**  
**ADANA INTL**

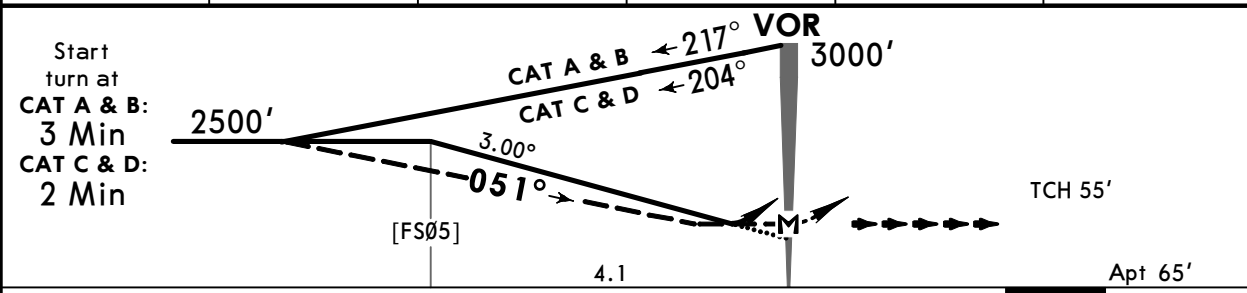
**JEPPESSEN**  
24 MAY 19 **(23-3)**

**ADANA, TURKEY**  
**VOR Rwy 05**

ATIS <b>119.225</b>	INCIRLIK Approach (R) <b>118.3</b>	ADANA Tower <b>131.1 121.1</b>	Ground <b>121.9</b>
VOR ADA <b>112.7</b>	Final Apch Crs <b>051°</b>	No FAF	DA/MDA(H) <b>1200' (1135')</b>
MISSED APCH: Climb on R-051 to 2000', then climbing turn LEFT to VOR at 3000' and hold.			Apt Elev 65'
Alt Set: hPa	Apt Elev: 2 hPa	Trans level: By ATC	Trans alt: 10000'



ADA DME	4.1	4.0	3.0	2.0	1.0
ALTITUDE	2500'	2470'	2160'	1850'	1530'



Gnd speed-Kts	70	90	100	120	140	160	HIALS REIL PAPI	2000' on 112.7 ↑ R-051
Descent Angle 3.00°	372	478	531	637	743	849		

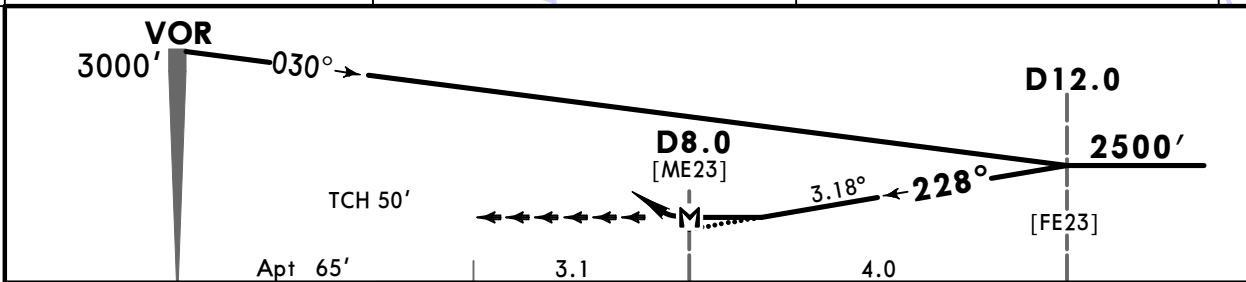
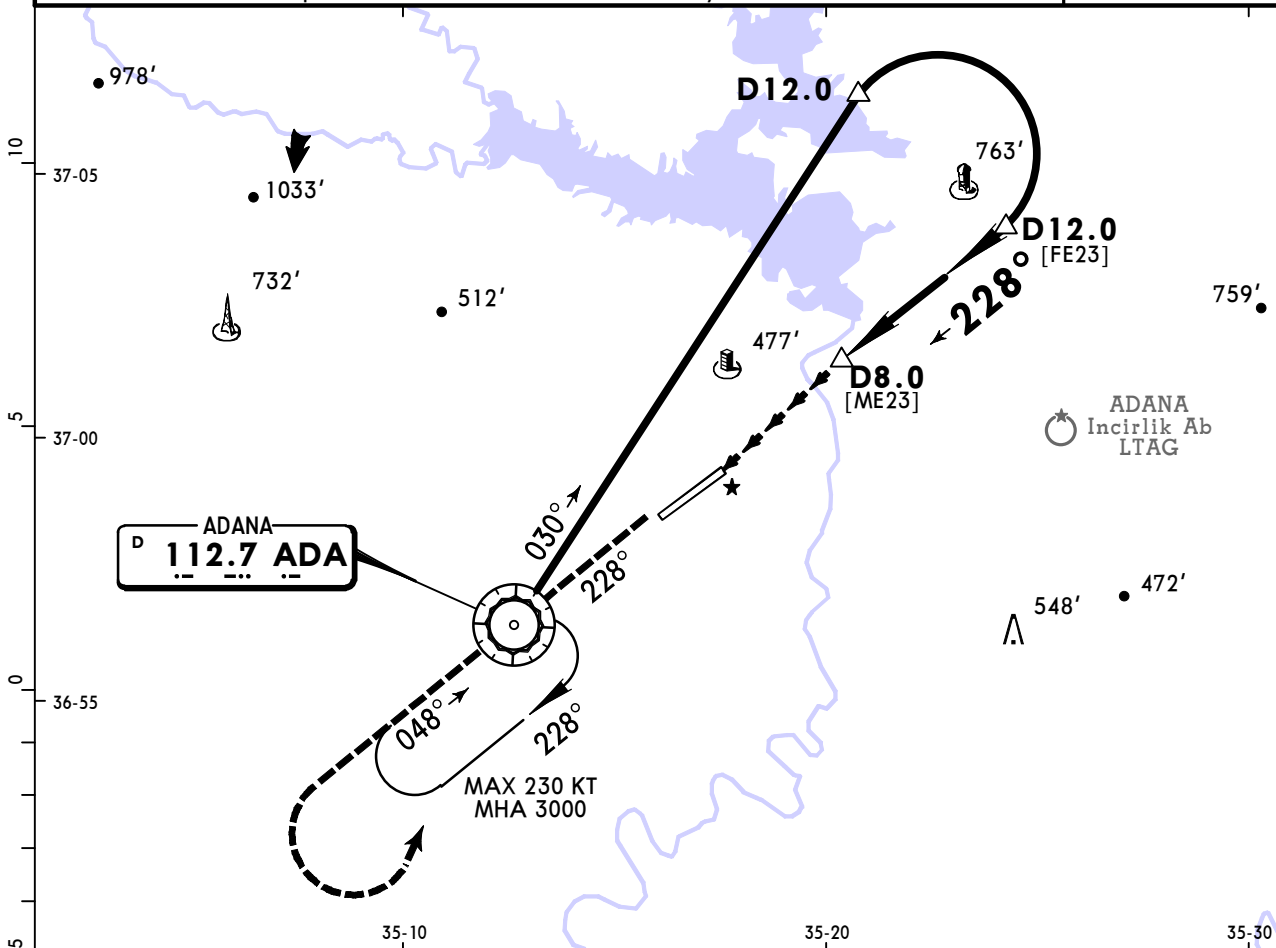
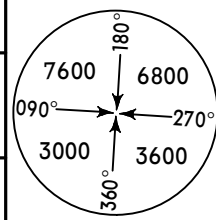
PANS OPS	STRAIGHT-IN LANDING RWY 05			CIRCLE-TO-LAND CAUTION: Not authorized South of airport, or by ATC	
	CDFA non-CDFA		MDA(H) 1200' (1135')		Max Kts
	DA/MDA(H) 1200' (1135')		MDA(H) 1200' (1135')		
	ALS out		ALS out		100
	A	RVR 1500m	RVR 4800m	RVR 5000m	135
B				180	
C	RVR 2400m			205	
D					

**LTAF/ADA**  
**ADANA INTL**

**JEPPESSEN**  
24 MAY 19 **23-4**

**ADANA, TURKEY**  
**VOR DME 3**

BRIEFING STRIP™	ATIS	INCIRLIK Approach (R)	ADANA Tower		Ground
	119.225	118.3	131.1	121.1	121.9
	VOR ADA <b>112.7</b>	Final Apch Crs <b>228°</b>	Minimum Alt <b>D12.0</b> 2500' (2435')	MDA(H) <b>1200'</b> (1135')	Apt Elev 65'
<b>MISSED APCH: Proceed to VOR climbing to 3000' and hold.</b> If unable to reach 3000' at VOR intercept R-228 and climbing to 2500', then turn LEFT and proceed to VOR climbing to 3000' and hold.					
Alt Set: hPa		Apt Elev: 2 hPa	Trans level: By ATC		Trans alt: 10000'



Gnd speed-Kts	70	90	100	120	140	160	Lighting - Refer to Airport Chart	3000'	ADA 112.7
Descent Angle	3.18°	394	506	563	675	788			
MAP at D8.0									

**Standard** CIRCLE-TO-LAND CAUTION: Not authorized South of airport, or by ATC

PANS OPS	Max Kts	MDA(H)		VIS
A	100	1200'	(1135')	1500m
B	135	1200'	(1135')	1600m
C	180	1200'	(1135')	2400m
D	205	1200'	(1135')	3600m

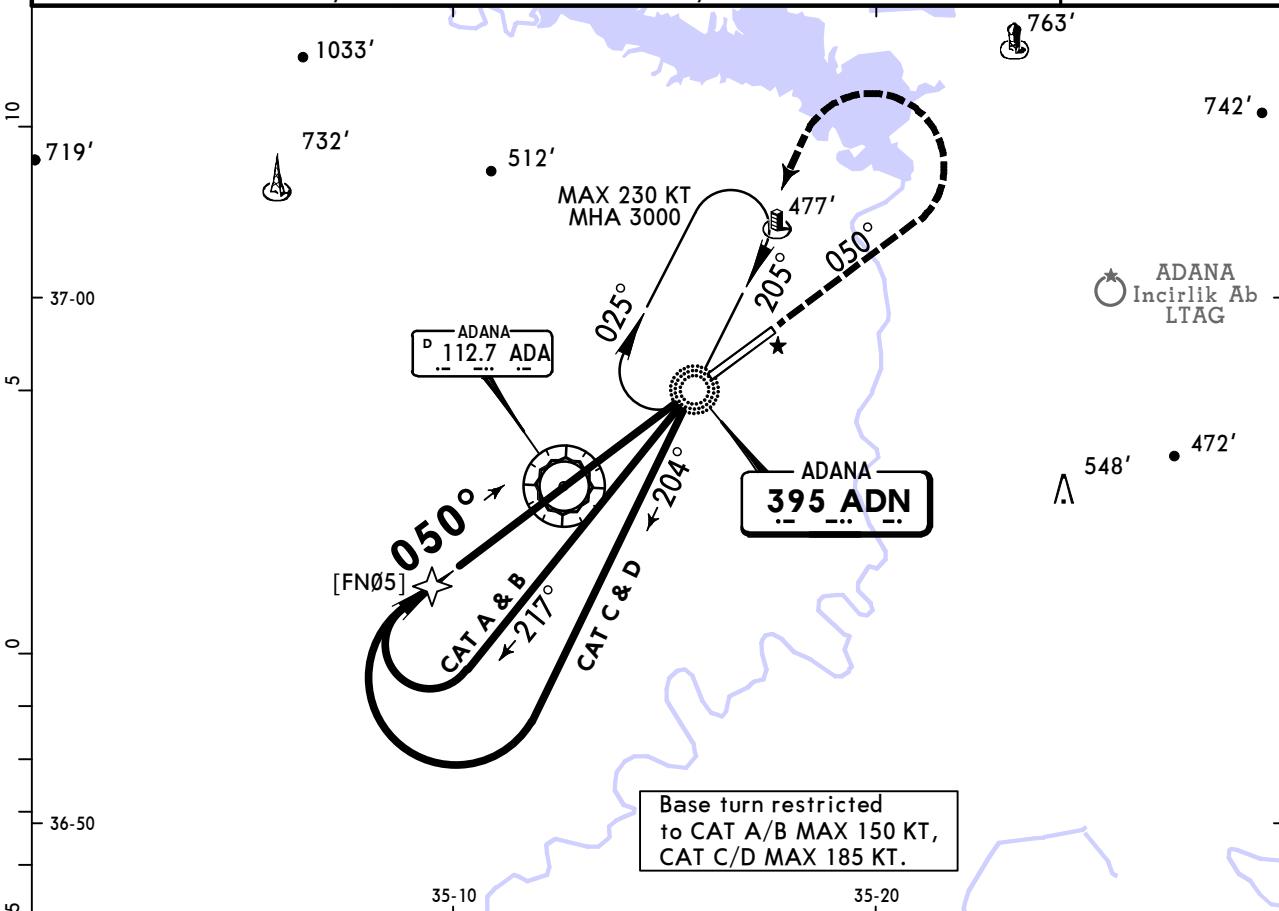
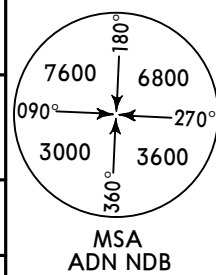
CHANGES: App frequency.

**LTAF/ADA**  
**ADANA INTL**

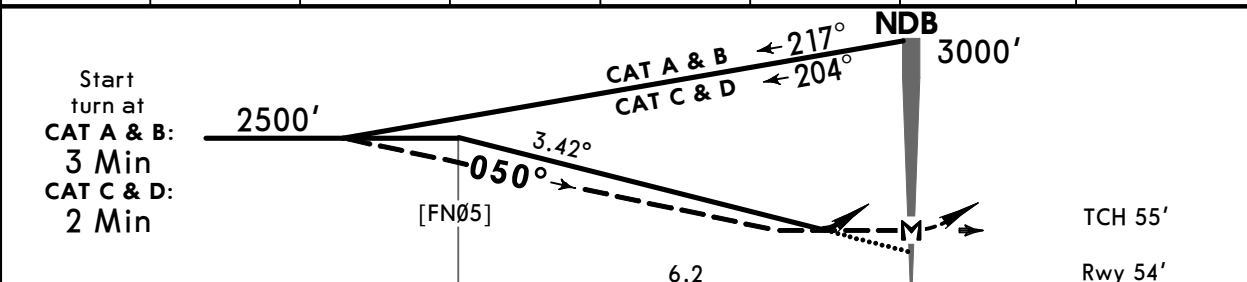
**JEPPESSEN**  
24 MAY 19 **(26-1)**

**ADANA, TURKEY**  
**NDB Rwy 05**

BRIEFING STRIP™	ATIS	INCIRLIK Approach (R)	ADANA Tower		Ground
	119.225	118.3	131.1	121.1	121.9
	NDB ADN <b>395</b>	Final Apch Crs <b>050°</b>	No FAF	DA/MDA(H) <b>480'</b> (426')	Apt Elev 65' Rwy 54'
<b>MISSED APCH: Climb on 050° from NDB to 1000', then climbing turn LEFT to NDB at 3000' and hold.</b>					
Alt Set: hPa		Rwy Elev: 2 hPa	Trans level: By ATC		Trans alt: 10000'



ADA DME	3.2	3.0	2.0	1.0	0.0	1.0 after ADA	2.0 after ADA
ALTITUDE	2500'	2430'	2070'	1710'	1350'	990'	630'



Gnd speed-Kts	70	90	100	120	140	160	HIALS REIL PAPI 1000' on 050° from ADN 395
Descent Angle	3.42°	424	545	605	726	847	
MAP at NDB							

PANS OPS	<b>Standard</b> STRAIGHT-IN LANDING RWY 05				CIRCLE-TO-LAND CAUTION: Not authorized South of airport, or by ATC	
	CDFA		non-CDFA		Max Kts	MDA(H) VIS
	DA/MDA(H) <b>480'</b> (426')		MDA(H) <b>480'</b> (426')			
		ALS out		ALS out	100	1200' (1135') 1500m
	A	RVR 1500m	RVR 1500m	RVR 2200m	135	1200' (1135') 1600m
B	RVR 1300m	RVR 2000m	RVR 1700m	RVR 2400m	180	1200' (1135') 2400m
C					205	1200' (1135') 3600m
D						

## Chart changes since cycle 22-2019

ADD = added chart, REV = revised chart, DEL = deleted chart.

ACT	PROCEDURE IDENT	INDEX	REV DATE	EFF DATE
-----	-----------------	-------	----------	----------

**ADANA, (ADANA INTL - LTAF)**

## TERMINAL CHART CHANGE NOTICES

No Chart Change Notices for Airport LTAF