

List of pages in this Trip Kit

Trip Kit Index

Airport Information For LTFG

Terminal Charts For LTFG

Revision Letter For Cycle 02-2019

Change Notices

Notebook

General Information

Location: GAZIPASA TUR
ICAO/IATA: LTFG / GZP
Lat/Long: N36° 17.97', E032° 18.08'
Elevation: 126 ft

Airport Use: Public
Daylight Savings: Not Observed
UTC Conversion: -3:00 = UTC
Magnetic Variation: 5.0° E

Fuel Types: Jet A-1
Customs: Yes
Airport Type: IFR
Landing Fee: Yes
Control Tower: Yes
Jet Start Unit: No
LLWS Alert: No
Beacon: Yes

Sunrise: 0450 Z
Sunset: 1519 Z

Runway Information

Runway: 08
Length x Width: 7710 ft x 148 ft
Surface Type: concrete
TDZ-Elev: 52 ft
Lighting: Edge, ALS, Centerline, REIL

Runway: 26
Length x Width: 7710 ft x 148 ft
Surface Type: concrete
TDZ-Elev: 126 ft
Lighting: Edge, Centerline

Communication Information

ATIS: 120.950
Gazipasa Tower: 37.075
Gazipasa Tower: 122.800
Gazipasa Tower: 119.250
Gazipasa Ground: 121.800
Antalya Approach: 126.025
Antalya Approach: 120.225

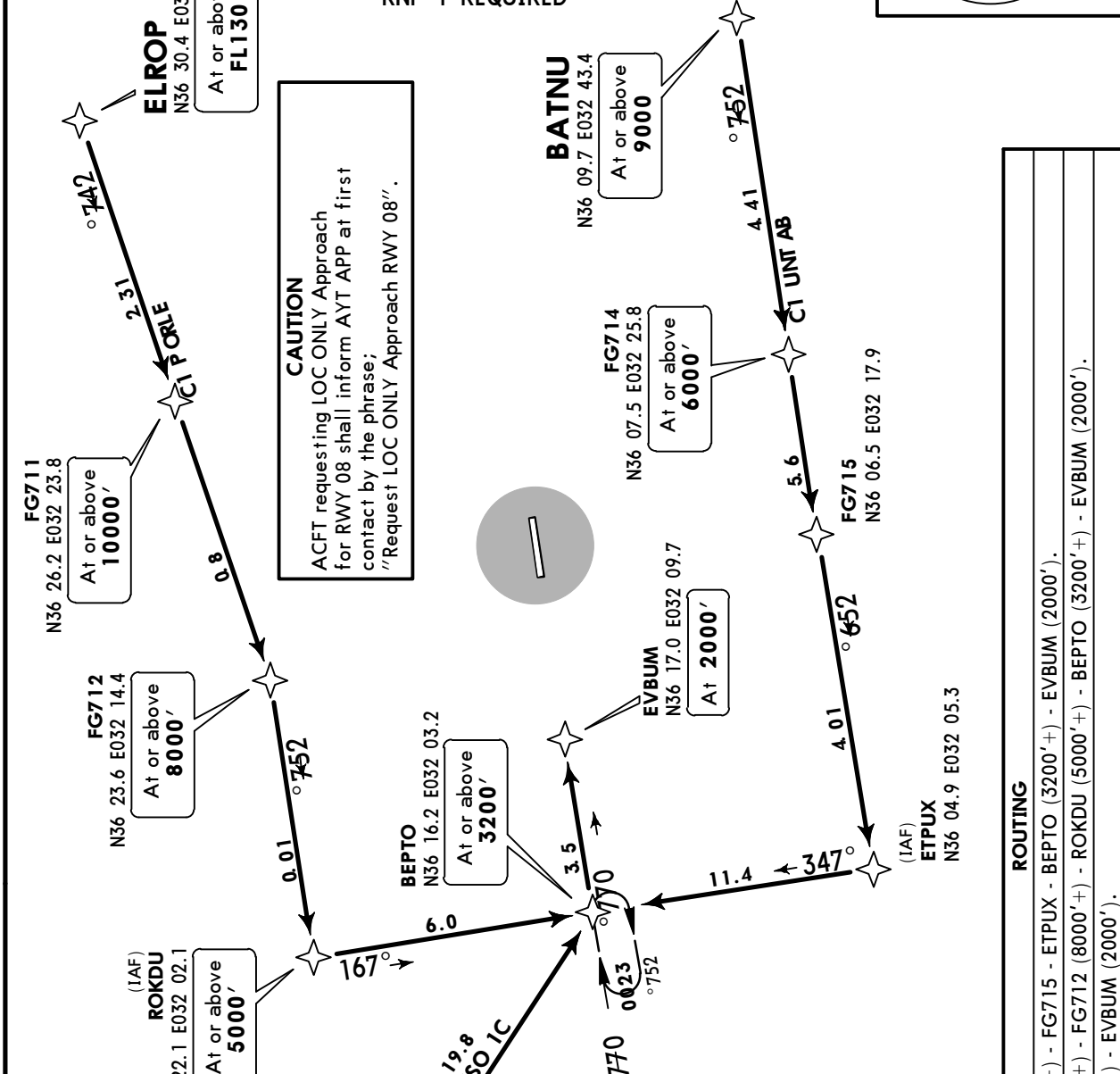
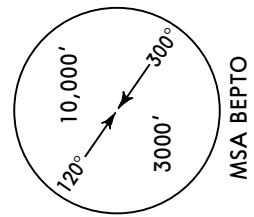
LTFG/GZP
ALANYA

29 JUL 16 **10-2**

GAZIPASA, TURKEY
RNAV STAR

ATIS 120.950 Apt Elev 126' Alt Set: hPa Trans level: By ATC Trans alt: 15000'

**BATNU 1C [BATN1C]
ELROP 1C [ELRO1C], UTUSO 1C [UTUS1C]
RWY 08 RNAV ARRIVALS
RNAV (GNSS)
RNP-1 REQUIRED**



LOST COMMS ▼ LOST COMMS ▼ LOST COMMS ▼ LOST COMMS ▼

At or above 11000':
Follow the FPL route using last assigned and acknowledged FL/altitude.
Within 25 DME of GZP NDB/DME, proceed direct to GZP NDB descending/maintaining 11000'. Leave GZP NDB at 11000'. Execute instrument approach procedure and land.

Below 11000':
Climb 11000' following the RNAV(GNSS) procedure laterally. Then, proceed direct to GZP NDB maintaining 11000'. Leave GZP NDB at 11000'. Execute instrument approach procedure and land.

At or after BEPTO:
Continue approach. Execute the RNAV(GNSS) procedure and land.

ROUTING	
STAR	
BATNU 1C	BATNU (9000'+) - FG714 (6000'+) - ETPUX - BEPTO (3200'+) - EVBUM (2000').
ELROP 1C	ELROP (FL130+) - FG711 (10000'+) - FG712 (8000'+) - ROKDU (5000'+) - BEPTO (3200'+) - EVBUM (2000').
UTUSO 1C	UTUSO (9000'+) - BEPTO (3200'+) - EVBUM (2000').

LTFG/GZP
ALANYA

JEPPesen
29 JUL 16 (10-2A)

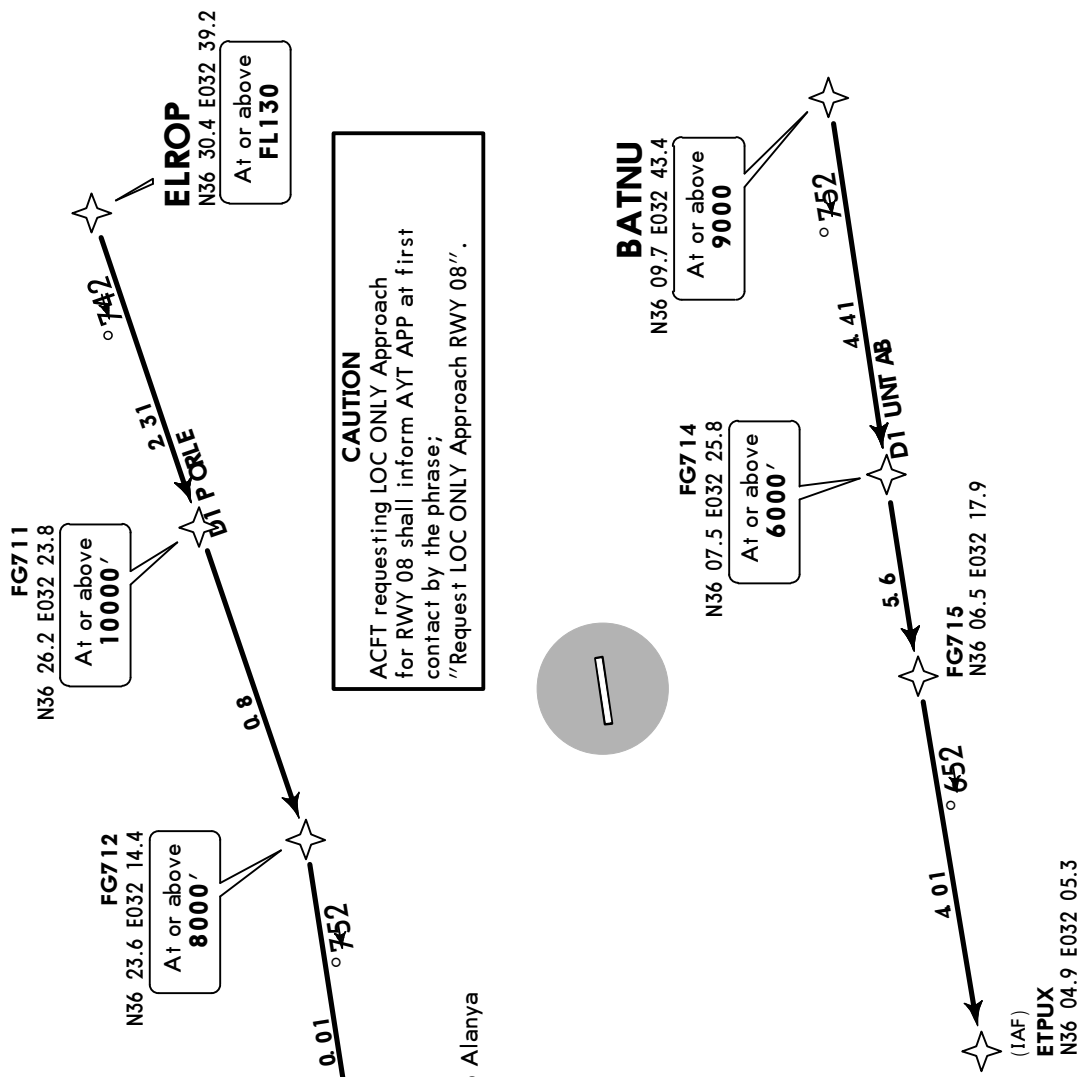
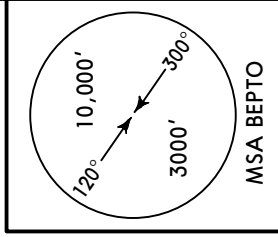
GAZIPASA, TURKEY
RNAV STAR

ATIS
120.950

Apt Elev
126'

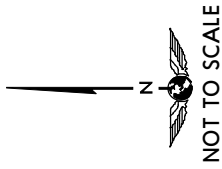
Alt Set: hPa Trans level: By ATC Trans alt: 15000'

**BATNU 1D [BATN1D]
ELROP 1D [ELRO1D]
RWY 08 RNAV ARRIVALS**
RNAV (GNSS)
RNP-1 REQUIRED



CAUTION
ACFT requesting LOC ONLY Approach for RWY 08 shall inform AYT APP at first contact by the phrase:
"Request LOC ONLY Approach RWY 08".

Direct distance to Alanya airport from:
EPTOX 17NM
ROKDU 14NM



LOST COMMS ▼ LOST COMMS ▼ LOST COMMS ▼ LOST COMMS ▼

At or above 11000':
Follow the FPL route using last assigned and acknowledged FL/altitude.
Within 25 DME of GZP NDB/DME, proceed direct to GZP NDB descending/maintaining 11000'. Leave GZP NDB at 11000'.
Execute instrument approach procedure and land.

Below 11000':
Climb 11000' following the RNAV(GNSS) procedure laterally. Then, proceed direct to GZP NDB maintaining 11000'. Leave GZP NDB at 11000'. Execute instrument approach procedure and land.

At or after BEPTO:
Continue approach. Execute the RNAV(GNSS) procedure and land.

ROUTING	
STAR	
BATNU 1D	BATNU (9000'+) - FG714 (6000'+) - FG715 - ETPUS.
ELROP 1D	ELROP (FL130+) - FG711 (10000'+) - ROKDU (5000'+).

LTFG/GZP
ALANYA

JEPPESEN
29 JUL 16 (10-2B)

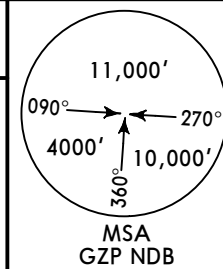
GAZIPASA, TURKEY

STAR

ATIS
120.950

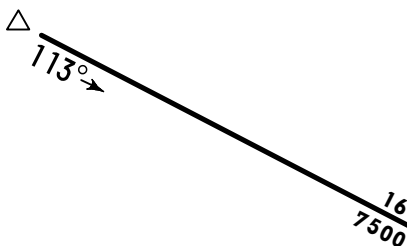
Apt Elev
126'

Alt Set: hPa
Trans level: By ATC Trans alt: 15000'

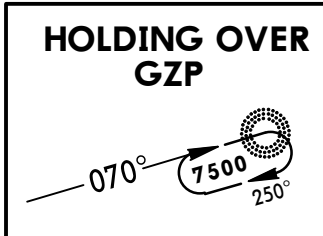
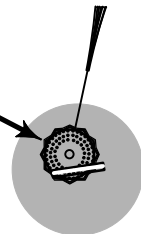


EVKOR 1B [EVKO1B]
ARRIVAL

EVKOR
D16.2 GZP
N36 25.7 E032 00.0



GAZIPASA	
D	(114.2) GZP
(H)	
N36	18.3 E032 17.8
316 GZP	
N36	18.3 E032 17.8



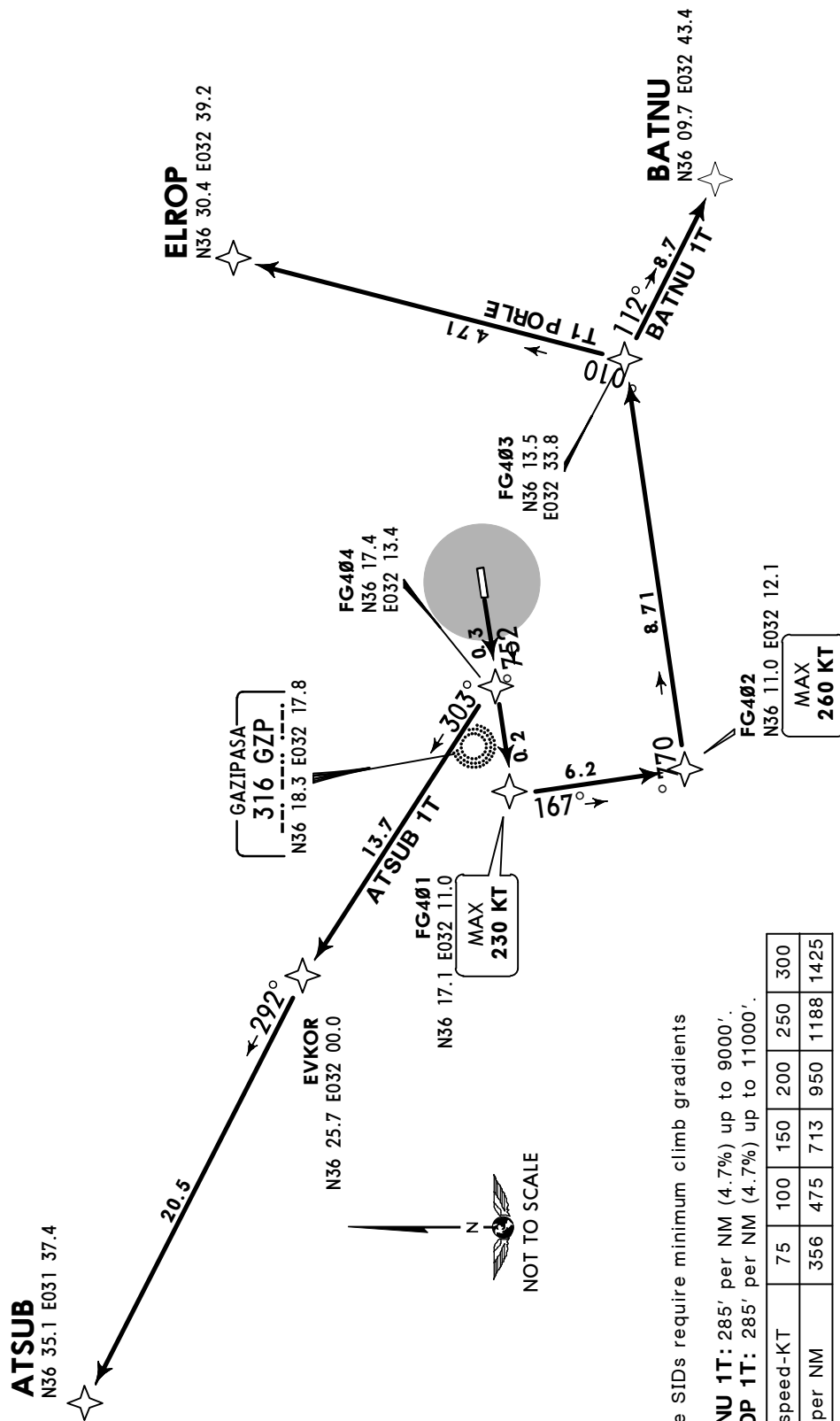
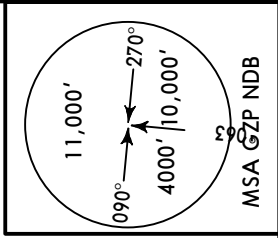
LTFG/GZP
ALANYA

JEPPESSEN
4 SEP 15 10-3 Eff 17 Sep

GAZIPASA, TURKEY
RNAV SID

Apt Elev 126'
Trans level: By ATC Trans alt: 15000'

ATSUB 1T [ATSU1T]
BATNU 1T [BATN1T], ELROP 1T [ELRO1T]
RWY 26 RNAV DEPARTURES
RNAV (GNSS)
RNP-1 REQUIRED



These SIDs require minimum climb gradients

BATNU 1T: 285' per NM (4.7%) up to 9000'.

ELROP 1T: 285' per NM (4.7%) up to 11000'.

Gnd speed-KT	75	100	150	200	250	300
285' per NM	356	475	713	950	1188	1425

If unable to comply inform GAZIPASA Tower at first contact.

ROUTING

SID	ROUTING
ATSUB 1T	On 257° track to EVKOR, turn RIGHT to FG404, turn LEFT to ATSUB.
BATNU 1T	On 257° track to FG401, turn LEFT to FG402, turn RIGHT to BATNU.
ELROP 1T	On 257° track to FG401, turn LEFT to FG402, turn LEFT to ELROP.

LTFG/GZP
ALANYA

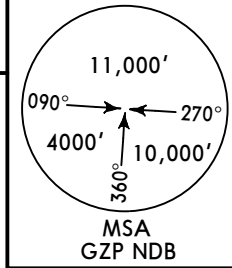
JEPPESEN
4 SEP 15 **(10-3A)** **Eff 17 Sep**

GAZIPASA, TURKEY

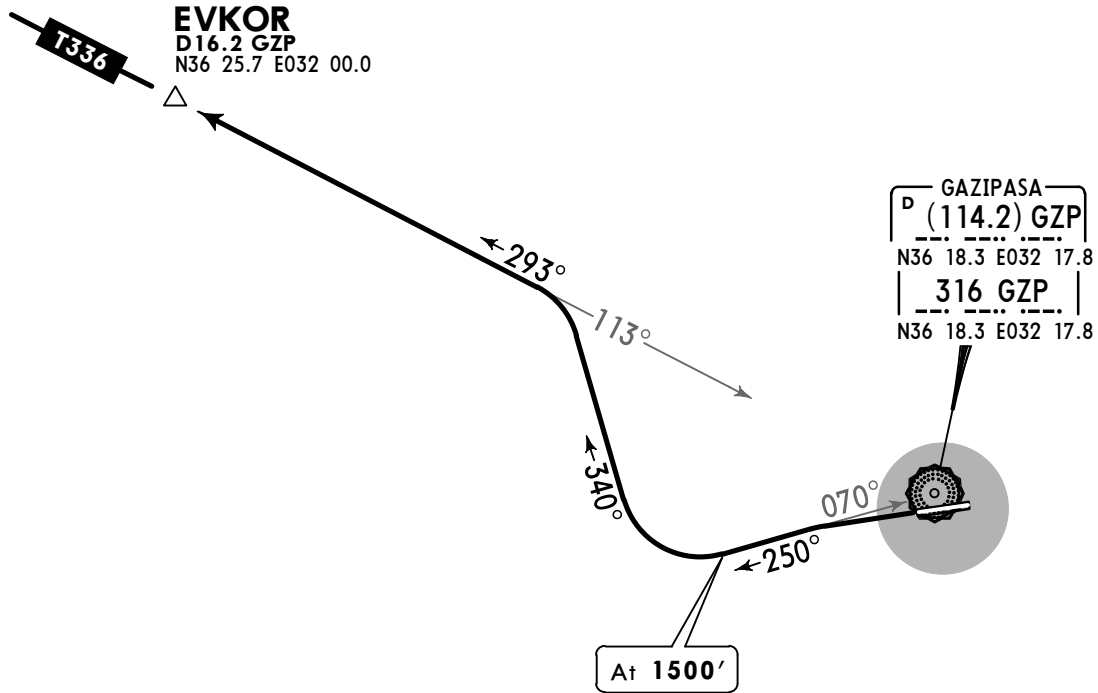
SID

Apt Elev
126'

Trans level: By ATC Trans alt: 15000'



EVKOR 1A [EVKO1A]
RWY 26 DEPARTURE
BASED ON GZP NDB



ROUTING

Intercept 250° bearing from GZP NDB, at 1500' turn RIGHT, 340° track, intercept 293° bearing from GZP NDB to EVKOR, then join airway T-336.

LTFG/GZP

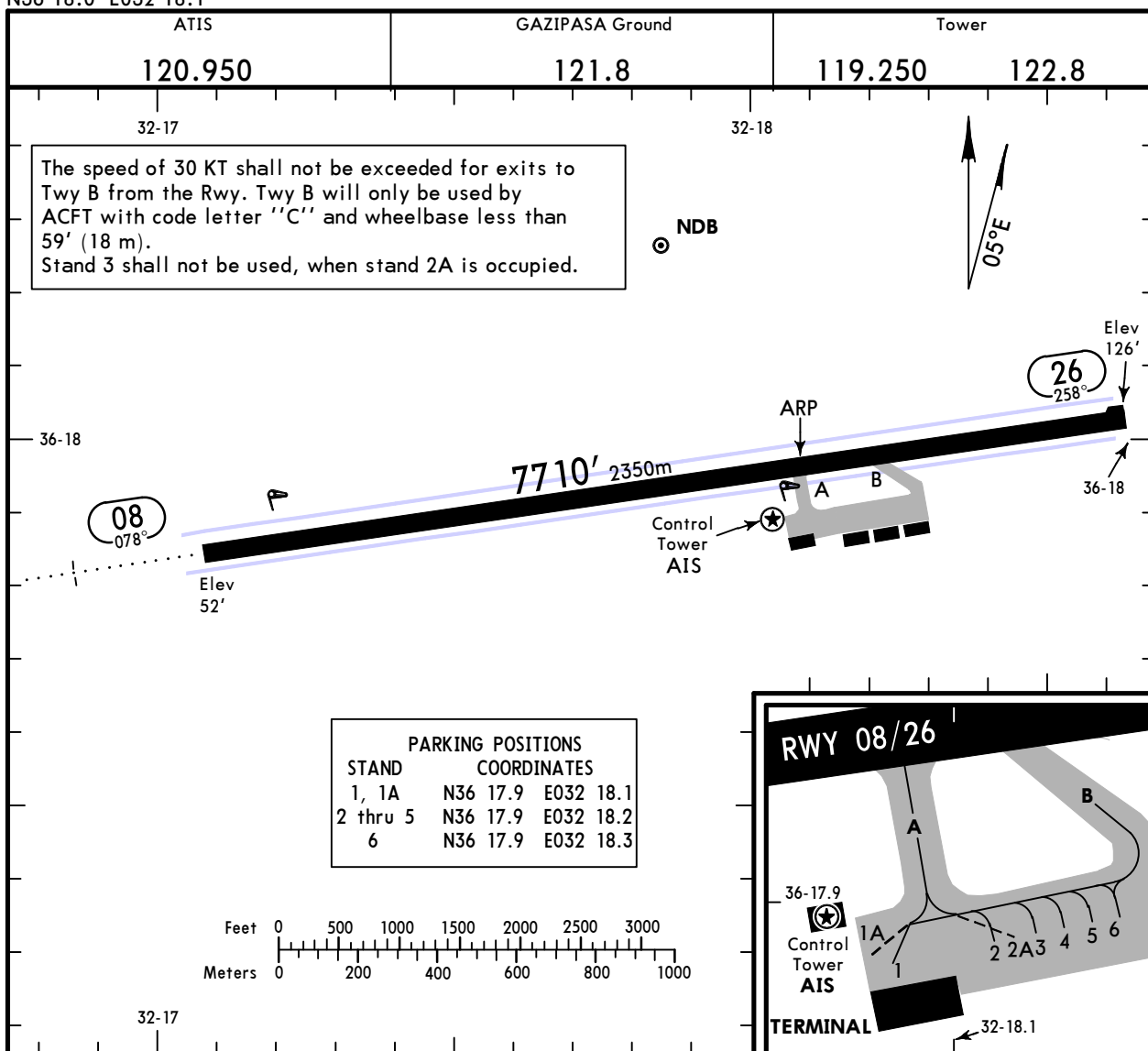
Apt Elev **126'**
N36 18.0 E032 18.1



25 JAN 19 **(10-9)** Eff 31 Jan

GAZIPASA, TURKEY

ALANYA



ADDITIONAL RUNWAY INFORMATION

RWY	HIRL (60m) CL (15m) ALS REIL SFL PAPI-L (3.0°)	USABLE LENGTHS		
		Threshold	Glide Slope	TAKE-OFF
08				
26	HIRL (60m) CL (15m)			148' 45m

Standard TAKE-OFF

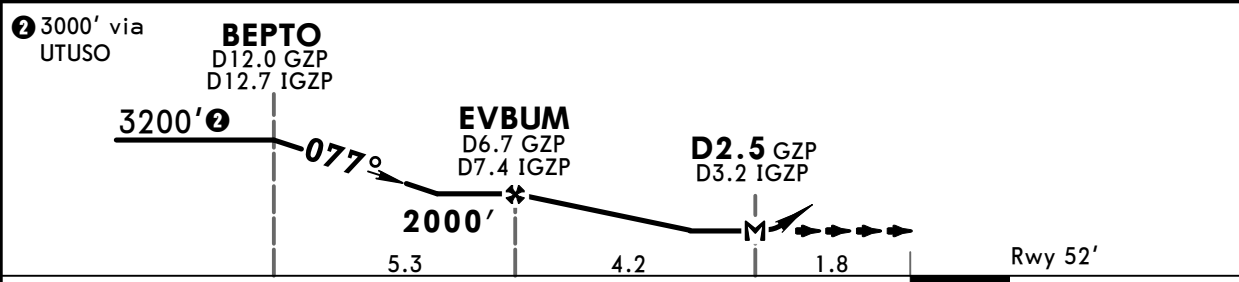
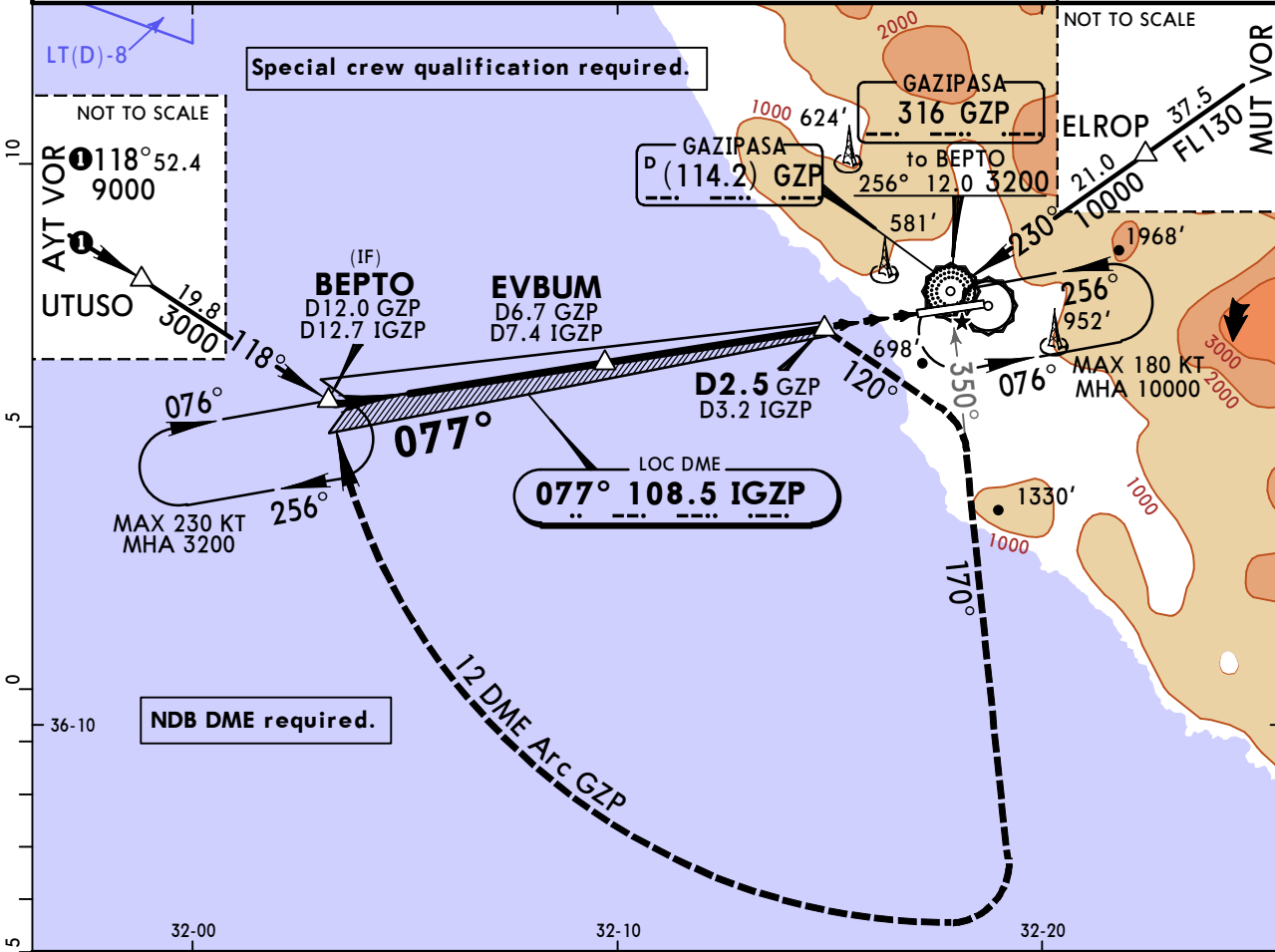
	Low Visibility Take-off			Day: RL & RCLM Night: RL or CL	Day: RL or RCLM Night: RL or CL	Adequate vis ref (Day only)
	HIRL, CL & relevant RVR	RL, CL & relevant RVR	RL & CL			
A						
B	TDZ, MID, RO	TDZ, MID, RO				
C	RVR 125m	RVR 150m	RVR 200m	RVR 300m	400m	500m
D						

LTFG/GZP
ALANYA

JEPPESEN
25 JAN 19 **(11-1)** Eff 31 Jan

GAZIPASA, TURKEY
LOC Rwy 08

ATIS 120.950	ANTALYA Approach 120.225 126.025		GAZIPASA Tower 119.250 122.8		Ground 121.8
LOC IGZP 108.5	Final Apch Crs 077°	Minimum Alt EVBUM 2000' (1948')	MDA(H) Refer to Minimums	Apt Elev 126' Rwy 52'	
MISSED APCH: Turn RIGHT on 120° to intercept 170° from NDB. Turn RIGHT and proceed along 12 DME Arc GZP and hold at BEPTO at 3200'. MAX 185 KT until intercepting 170° from NDB.					
Alt Set: hPa	Rwy Elev: 2 hPa	Trans level: By ATC	Trans alt: 15000'	MSA GZP NDB	



MAP at D2.5 GZP/D3.2 IGZP	ALS	MAX 185 KT	120°	170° from GZP
	PAPI		RT	316

Standard		STRAIGHT-IN LANDING RWY 08		CIRCLE-TO-LAND CAUTION: Not authorized North of airport Max Kts: _____ MDA(H) _____ VIS _____	
Missed apch climb grad mim 3.7% non-CDFA	MDA(H) 1000' (948')	Missed apch climb grad mim 2.5% non-CDFA	MDA(H) 1200' (1148')		
A	RVR 4100m	RVR 4500m	RVR 5000m	100	2000' (1874') 1500m
B	RVR 4300m	RVR 4700m		135	2400' (2274') 1600m
C	RVR 4300m	RVR 4700m		180	2900' (2774') 2400m
D	RVR 4300m	RVR 4700m		205	4000' (3874') 3600m

LTFG/GZP
ALANYA



GAZIPASA, TURKEY

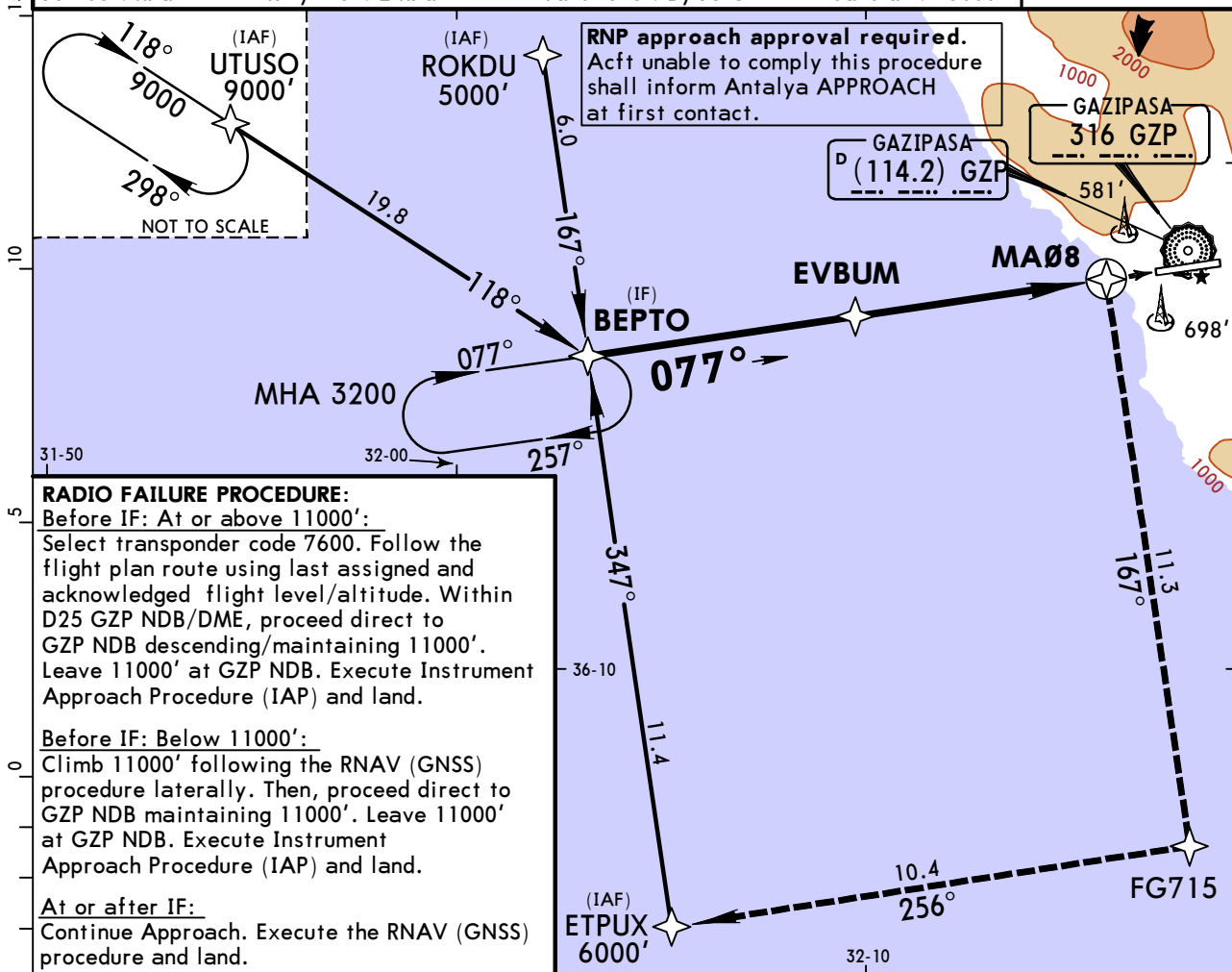
23 MAR 18

(12-1)

Eff 29 Mar

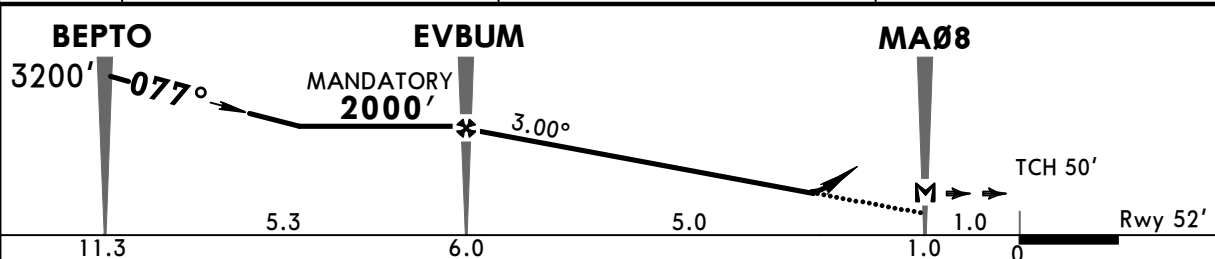
RNAV (GNSS) Rwy 08

*ATIS	ANTALYA Approach		*GAZIPASA Tower		*Ground
120.950	120.225	126.025	119.250	122.8	121.8
RNAV	Final Apch Crs 077°	Mandatory Alt EVBUM 2000' (1948')	LNAV MDA(H) Refer to Minimums	Apt Elev 126' Rwy 52'	
MISSED APCH: Climb to 3200'. From MA08 turn RIGHT to FG715, then turn RIGHT to ETPUX, then turn RIGHT to BEPTO and hold. MAX 185 KT at MA08.					
Alt Set: hPa	Rwy Elev: 2 hPa	Trans level: By ATC	Trans alt: 15000'	MSA BEPTO	



RADIO FAILURE PROCEDURE:
 Before IF: At or above 11000':
 Select transponder code 7600. Follow the flight plan route using last assigned and acknowledged flight level/altitude. Within D25 GZP NDB/DME, proceed direct to GZP NDB descending/maintaining 11000'. Leave 11000' at GZP NDB. Execute Instrument Approach Procedure (IAP) and land.
 Before IF: Below 11000':
 Climb 11000' following the RNAV (GNSS) procedure laterally. Then, proceed direct to GZP NDB maintaining 11000'. Leave 11000' at GZP NDB. Execute Instrument Approach Procedure (IAP) and land.
 At or after IF:
 Continue Approach. Execute the RNAV (GNSS) procedure and land.

DIST to THR	5.0	4.0	3.0
ALTITUDE	1684'	1368'	1052'



Gnd speed-Kts	70	90	100	120	140	160	ALS PAPI REIL MAX 185 KT FG715 RT
Descent Angle	3.00°	372	478	531	637	743	
MAP at MA08							

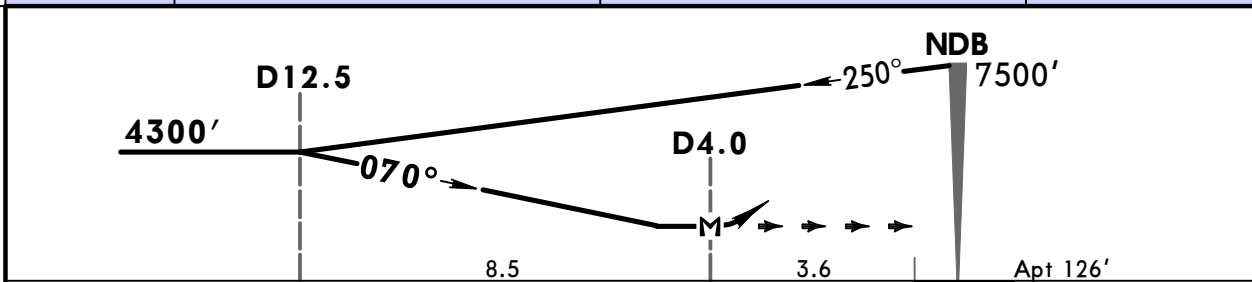
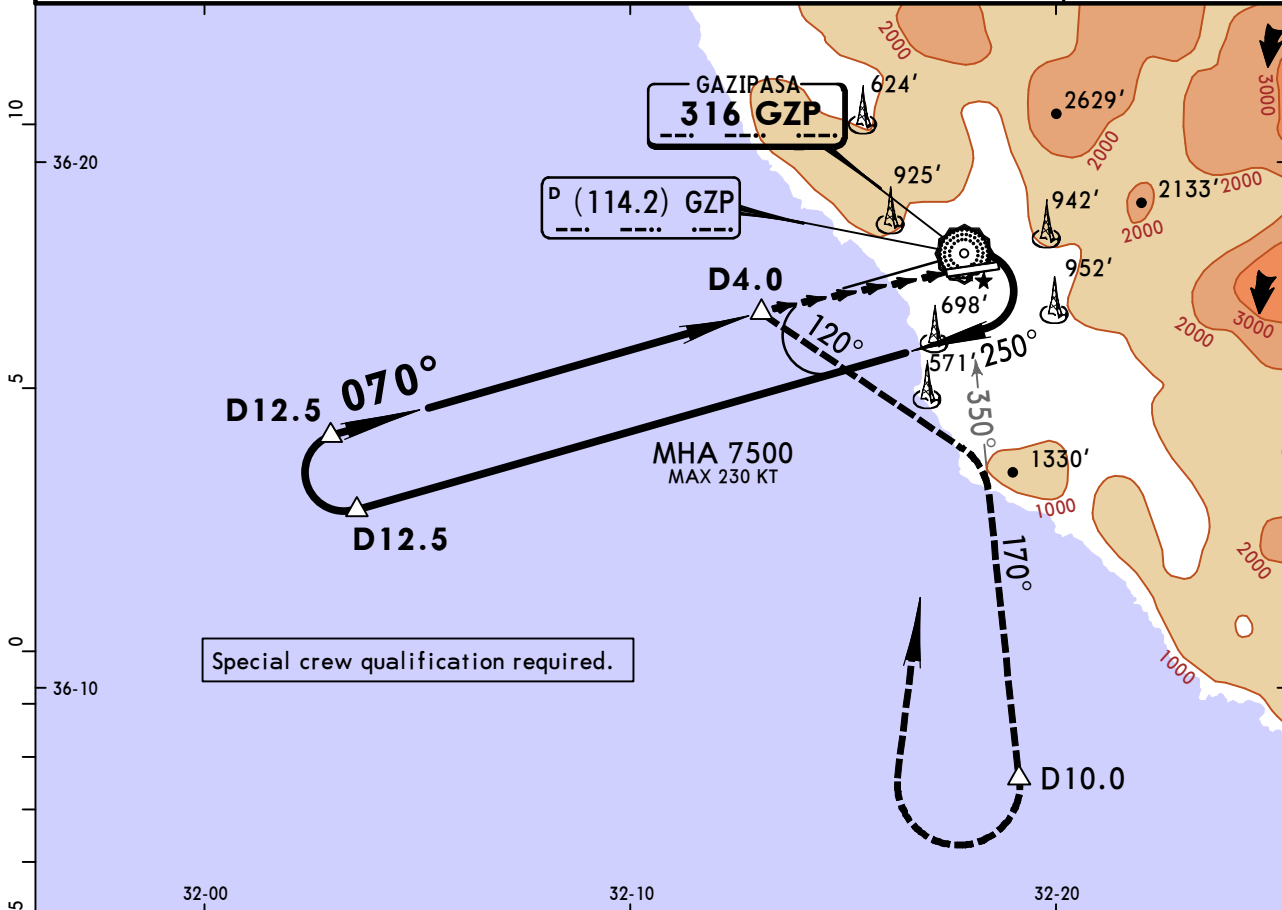
PANS OPS	Standard				STRAIGHT-IN LANDING RWY 08		CIRCLE-TO-LAND	
	Missed apch climb grad mim 4% CDFA MDA(H) 1000' (948')		Missed apch climb grad mim 2.5% CDFA MDA(H) 1200' (1148')		CAUTION: Not authorized North of airport		Max Kts MDA(H) VIS	
	ALS out		ALS out				100	2000' (1874') 1500m
	RVR 1500m		RVR 1500m				135	2400' (2274') 1600m
RVR 2400m		RVR 2400m				180	2900' (2774') 2400m	
RVR 2400m		RVR 2400m				205	4000' (3874') 3600m	

LTFG/GZP
ALANYA

JEPPESEN
23 MAR 18 **(16-1)** Eff 29 Mar

GAZIPASA, TURKEY
NDB DME

*ATIS	ANTALYA Approach		*GAZIPASA Tower		*Ground
120.950	120.225	126.025	119.25	122.8	121.8
NDB GZP 316	Final Apch Crs 070°	Minimum Alt D12.5 4300' (4174')	MDA(H) Refer to Minimums	Apt Elev 126'	<p>11,000 10,000 4000 270 090 360 MSA GZP NDB</p>
<p>MISSED APCH: Turn RIGHT on 120° to intercept 170° from NDB. At D10.0 turn RIGHT to cross NDB at 7500' and hold. MAX 185 KT until inbound NDB. If unable to reach 7500' at NDB, intercept 360° from NDB to cross 6100', then climbing turn LEFT to cross NDB at 7500' and hold.</p>					
Alt Set: hPa		Apt Elev: 5 hPa	Trans level: By ATC		Trans alt: 15000'
Racetrack restricted to MAX 185 KT.					



MAP at D4.0							Lighting - Refer to Airport Chart	120° RT	170° from GZP 316
-------------	--	--	--	--	--	--	-----------------------------------	-------------------	---------------------------------------

CIRCLE-TO-LAND		
CAUTION: Not authorized North of airport		
	MDA(H)	VIS
A	100 2000' (1874')	1500m
B	135 2400' (2274')	1600m
C	180 2900' (2774')	2400m
D	205 4000' (3874')	3600m

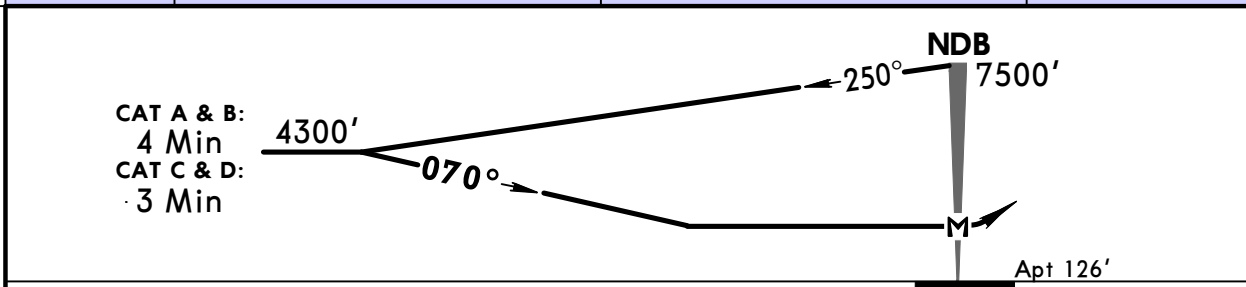
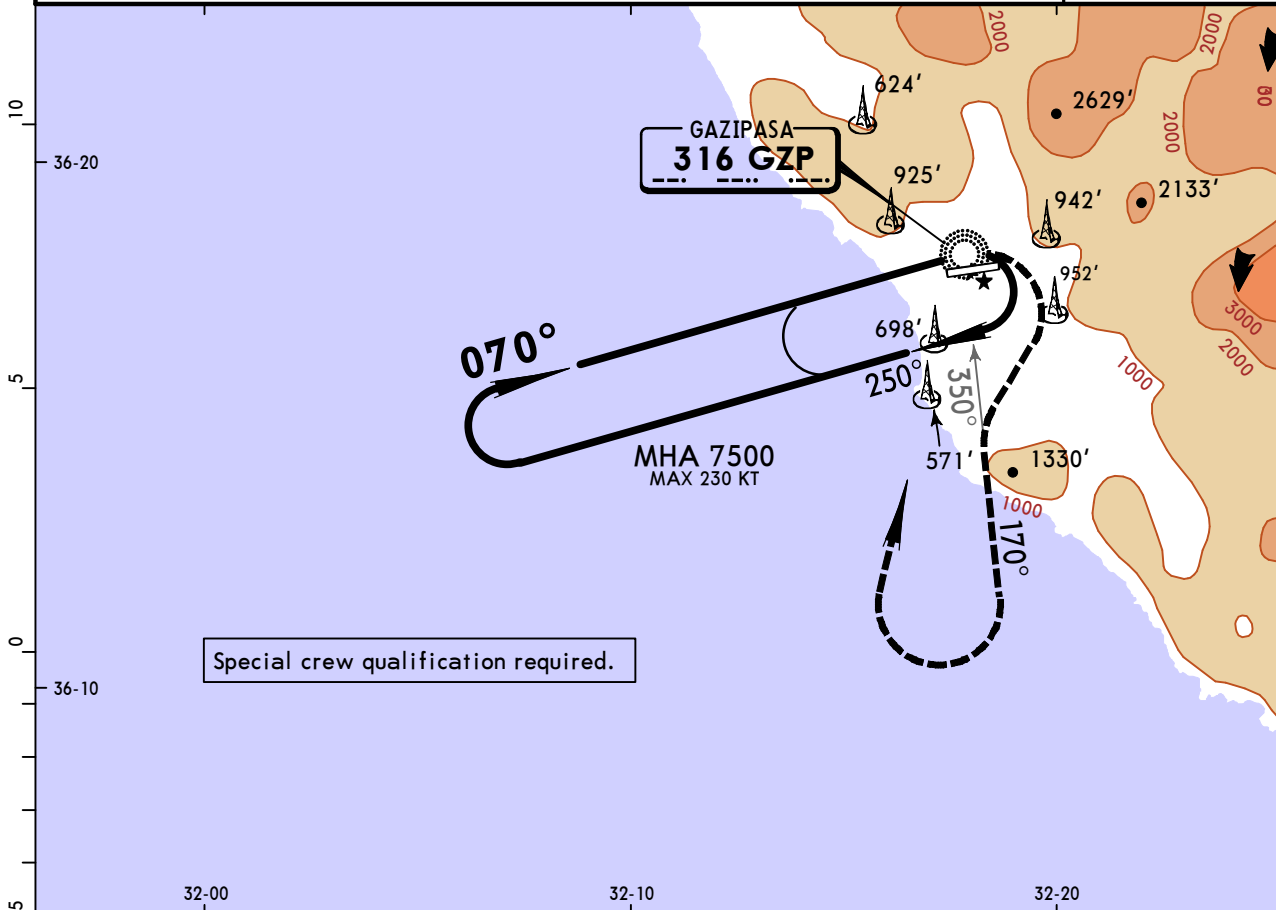
PANS OPS

LTFG/GZP ALANYA

JEPPESEN
23 MAR 18 **(16-2)** Eff 29 Mar

GAZIPASA, TURKEY NDB

*ATIS	ANTALYA Approach		*GAZIPASA Tower		*Ground
120.950	120.225	126.025	119.25	122.8	121.8
NDB GZP 316	Final Apch Crs 070°	Minimum Alt No FAF	MDA(H) Refer to Minimums	Apt Elev 126'	
MISSED APCH: Turn RIGHT on 170° from NDB and climb to 4100', then climbing turn RIGHT to cross NDB at 7500' and hold. MAX 185 KT until inbound NDB. If unable to reach 7500' at NDB, intercept 360° from NDB to cross 6100', then climbing turn LEFT to cross NDB at 7500' and hold.					
Alt Set: hPa		Apt Elev: 5 hPa	Trans level: By ATC		Trans alt: 15000'
Racetrack restricted to MAX 185 KT.					MSA GZP NDB



							Lighting - Refer to Airport Chart	RT	170° from GZP 316	4100'
MAP at NDB										

Standard CIRCLE-TO-LAND

CAUTION: Not authorized North of airport

	Max Kts	MDA(H)	VIS
A	100	2400' (2274')	1500m
B	135	2400' (2274')	1600m
C	180	2900' (2774')	2400m
D	205	4000' (3874')	3600m

PANS OPS

Chart changes since cycle 01-2019

ADD = added chart, REV = revised chart, DEL = deleted chart.

ACT	PROCEDURE IDENT	INDEX	REV DATE	EFF DATE
GAZIPASA, (ALANYA - LTFG)				
REV	AIRPORT, PARKING, AIRPORT...	10-9	25 Jan 2019	31 Jan 2019
REV	LOC RWY 08	11-1	25 Jan 2019	31 Jan 2019

TERMINAL CHART CHANGE NOTICES

No Chart Change Notices for Airport LTFG