

## List of pages in this Trip Kit

Trip Kit Index

Airport Information For UTAE

Terminal Charts For UTAE

Revision Letter For Cycle 05-2025

Change Notices

Notebook

## General Information

Location: KERKI TKM  
ICAO/IATA: UTAE / KEA  
Lat/Long: N37° 49.33', E065° 08.12'  
Elevation: 798 ft

Airport Use: Public  
Daylight Savings: Not Observed  
UTC Conversion: -5:00 = UTC  
Magnetic Variation: 5.0° E

Fuel Types: Jet A-1  
Customs: Yes  
Airport Type: IFR  
Landing Fee: Yes  
Control Tower: Yes  
Jet Start Unit: No  
LLWS Alert: No  
Beacon: No

Sunrise: 0021 Z  
Sunset: 1453 Z

## Runway Information

Runway: 16  
Length x Width: 8858 ft x 148 ft  
Surface Type: concrete  
TDZ-Elev: 797 ft  
Lighting: Edge, ALS

Runway: 34  
Length x Width: 8858 ft x 148 ft  
Surface Type: concrete  
TDZ-Elev: 797 ft  
Lighting: Edge, ALS

## Communication Information

Kerki Tower: 134.000 Secondary  
Kerki Tower: 125.500  
Kerki Transit Operations: 131.700  
Kerki Radio: 563.200 Non-English  
Kerki Radio: 567.200 Non-English  
Kerki Radio: 624.000 Non-English

UTAE/KEA  
KERKI

JEPPESEN

KERKI, TURKMENISTAN

26 NOV 21

10-1P

Eff 2 Dec

AIRPORT BRIEFING

---

## 1. GENERAL

---

### 1.1. TAXI PROCEDURES

Engines start-up, taxiing and towing without permission of TWR controller prohibited.

### 1.2. PARKING INFORMATION

Enter/exit stands under control of APT technical personnel.

### 1.3. COMMUNICATION FAILURE PROCEDURES

In case of communication failure:

- carry out approach according to established procedure;
- listen to ATC instructions and information on NDB frequency;
- during bad weather conditions proceed to alternate AD along route indicated in the flight plan at one of the flight levels established for flights without radio communication depending on flight direction.

Proceed to destination AD according to flight plan. Maintain assigned FL until crossing radio navigation aid of destination AD and descend at the Estimated Time of Arrival (ETA) indicated in the flight plan or as close to it as possible.

Carry out approach according to procedures established for this navigation aid within 30 minutes after ETA.

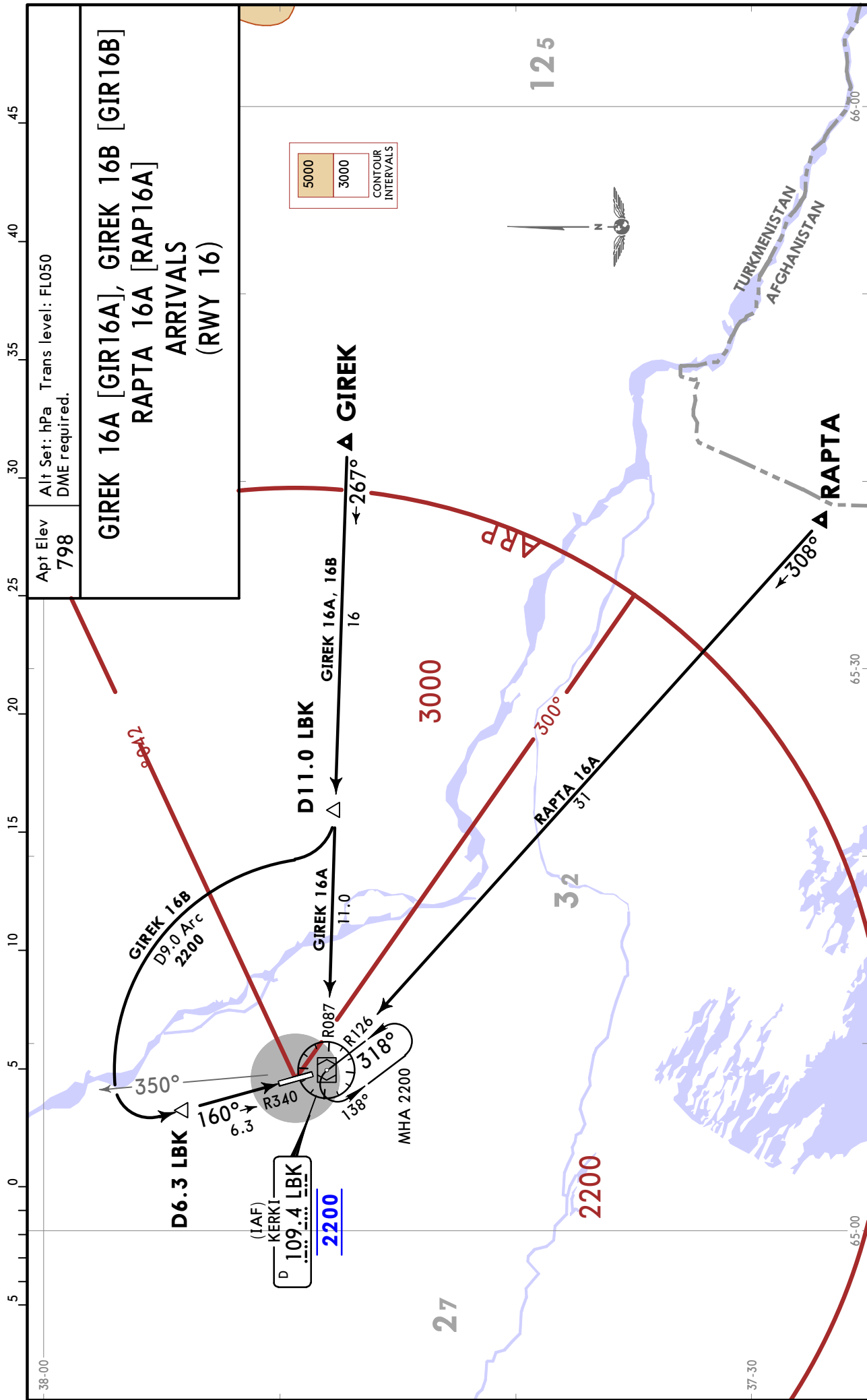
### 1.4. OTHER INFORMATION

Birds.

# UTAE/KEA KERKI

JEPPESSEN  
20 OCT 23 10-2 Eff 2 Nov

KERKI, TURKMENISTAN  
STAR



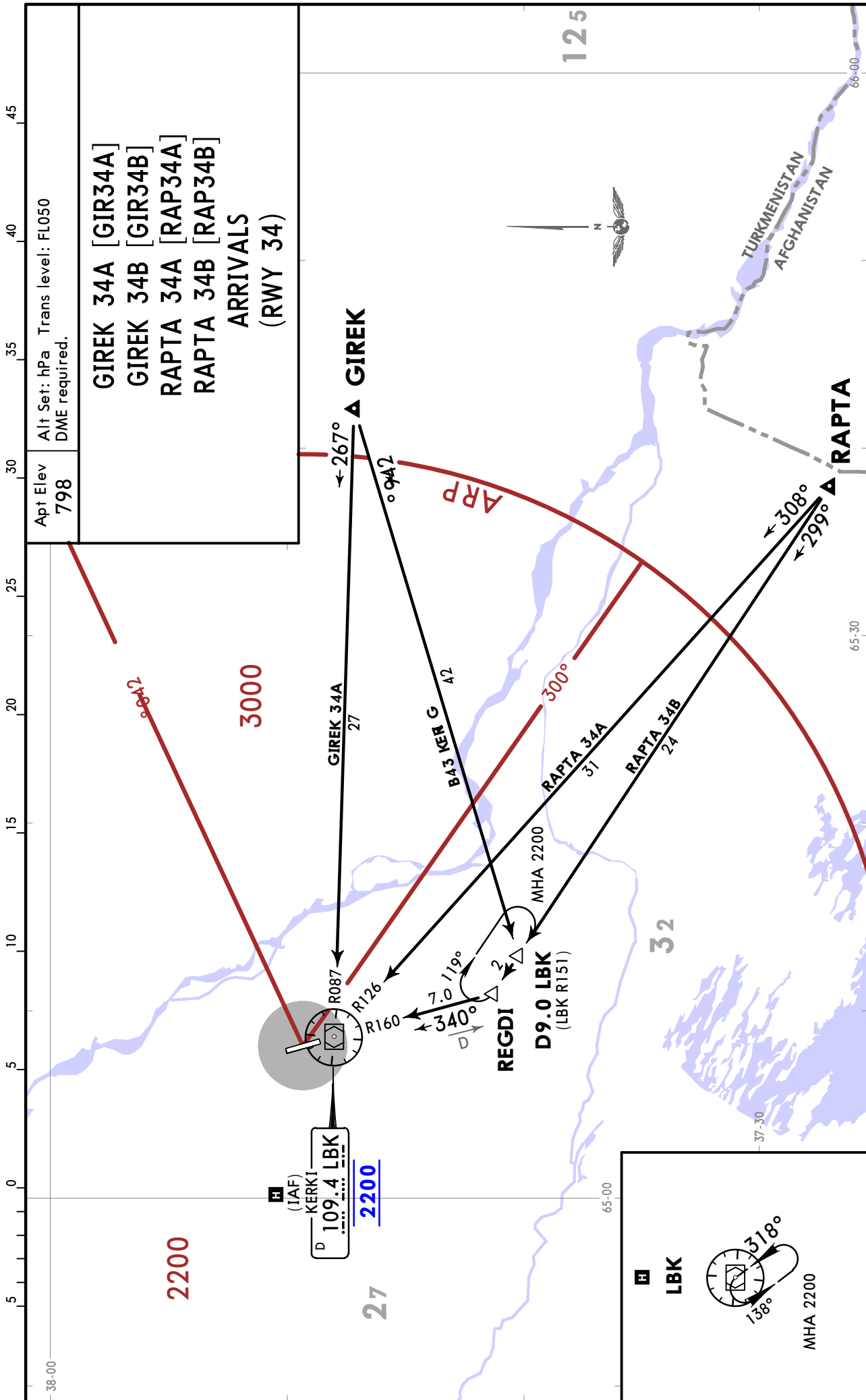
CHANGES: GIREK 16B established, chart scale.

# UTAE/KEA KERKI

JEPPESEN  
20 OCT 23 10-2A Eff 2 Nov

# KERKI, TURKMENISTAN

STAR



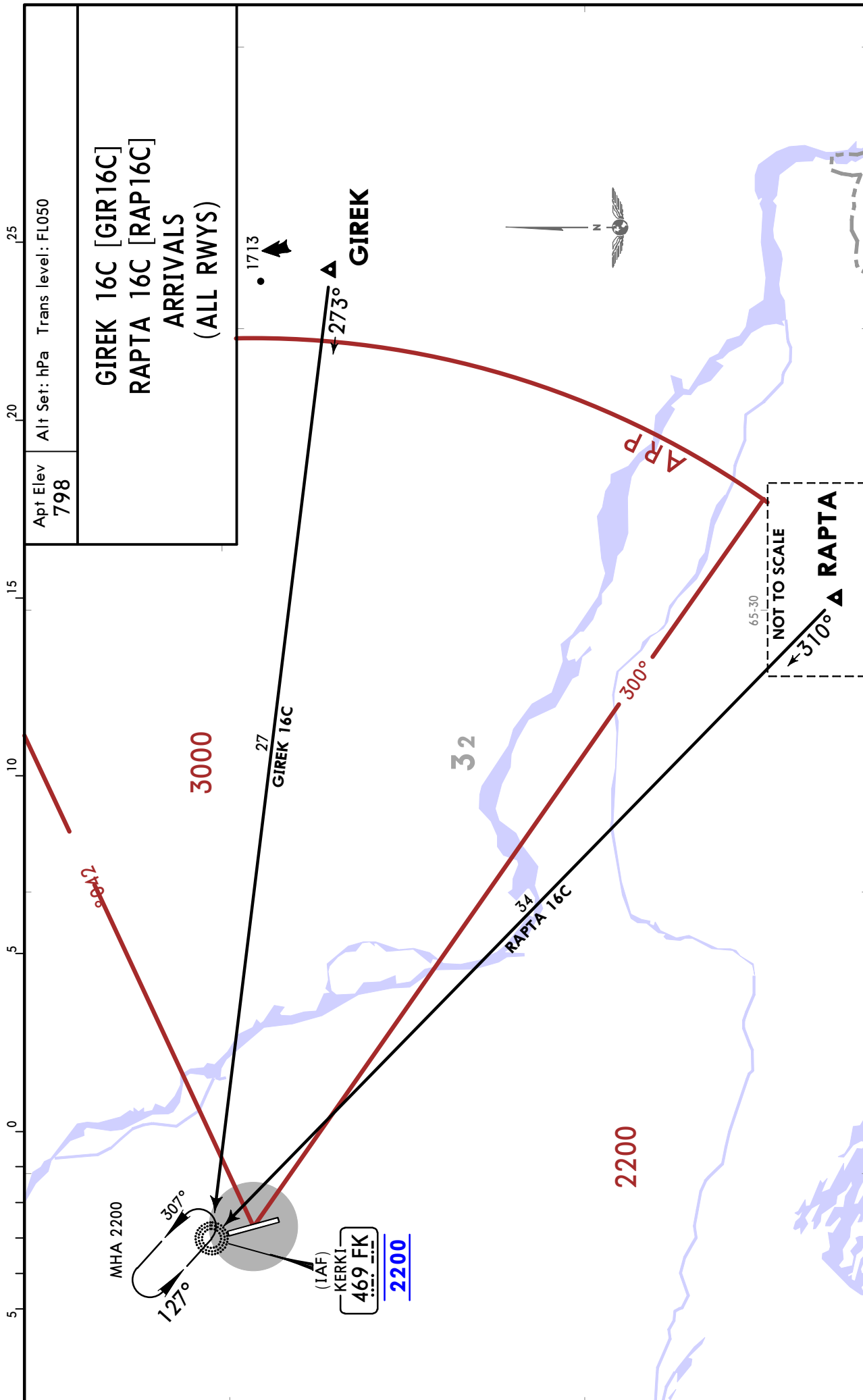
CHANGES: GIREK 34B established, chart scale.

# UTAE/KEA KERKI

26 NOV 21 **10-2B** Eff 2 Dec

# KERKI, TURKMENISTAN

**STAR**



CHANGES: New airport.

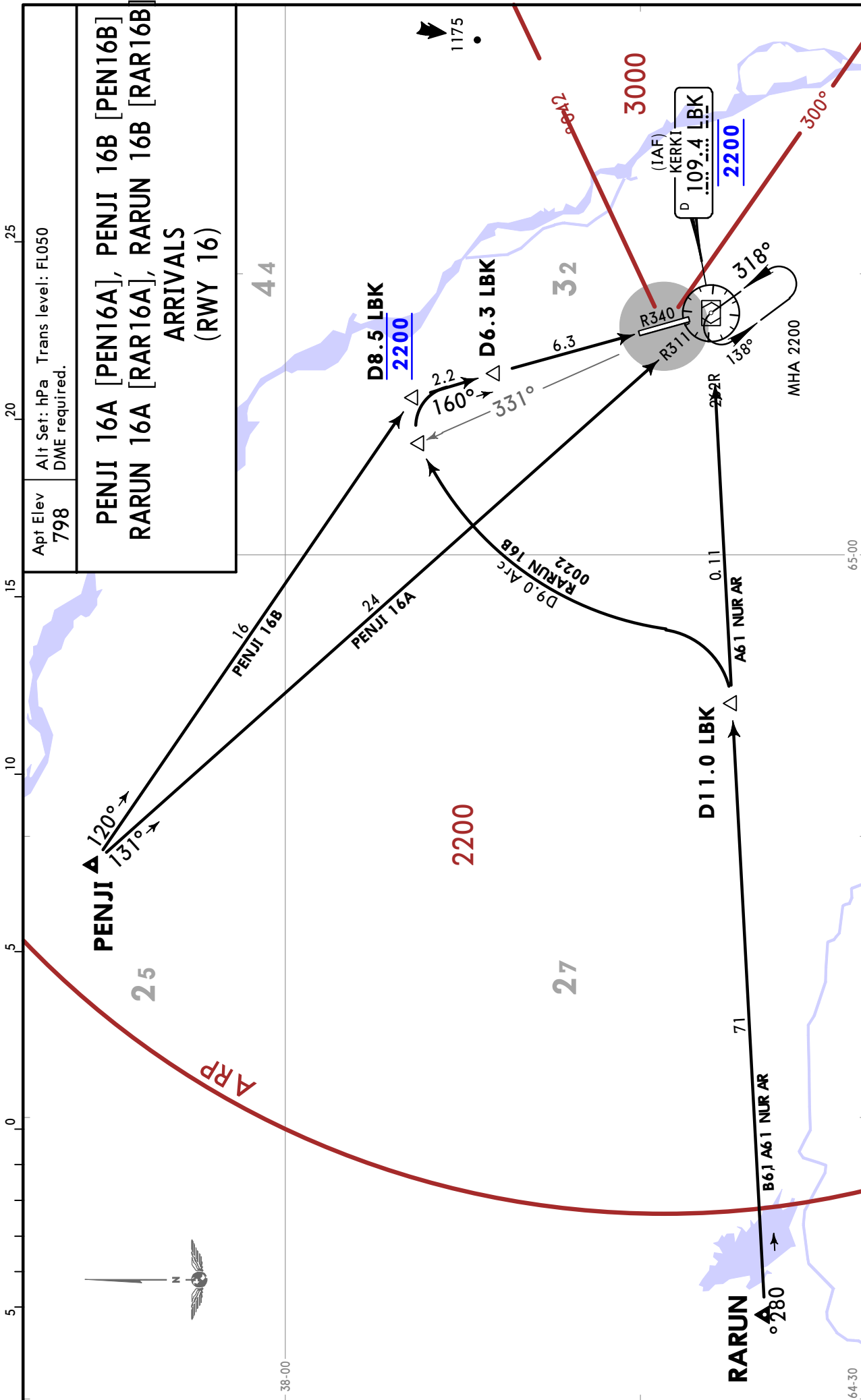
© JEPPESEN, 2021. ALL RIGHTS RESERVED.

# UTAE/KEA KERKI

26 NOV 21 **10-2C** Eff 2 Dec

# KERKI, TURKMENISTAN

**STAR**



CHANGES: New airport.

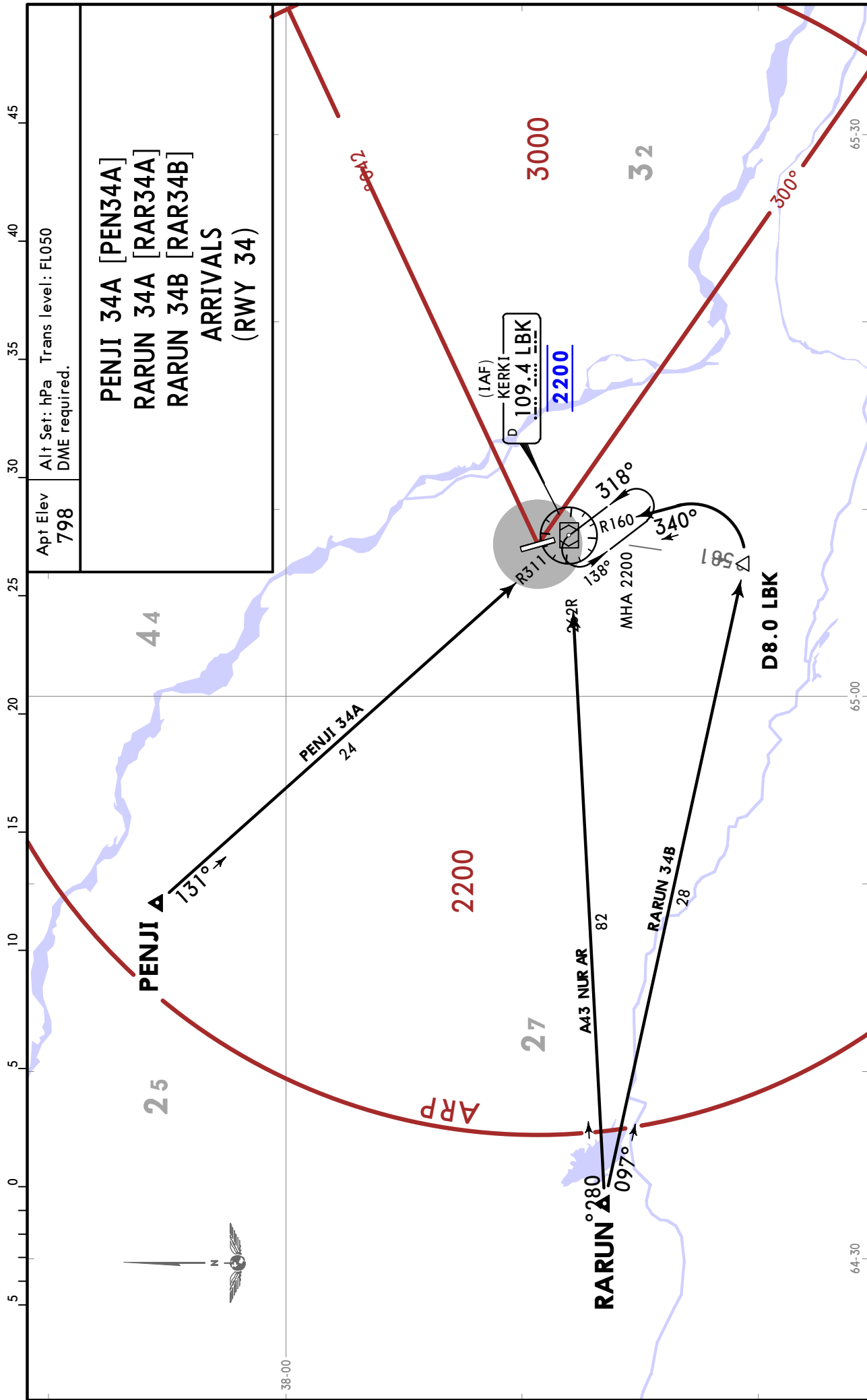
© JEPPESSEN, 2021. ALL RIGHTS RESERVED.

# UTAE/KEA KERKI

20 OCT 23 **10-2D** Eff 2 Nov

# KERKI, TURKMENISTAN

**STAR**



# UTAE/KEA KERKI



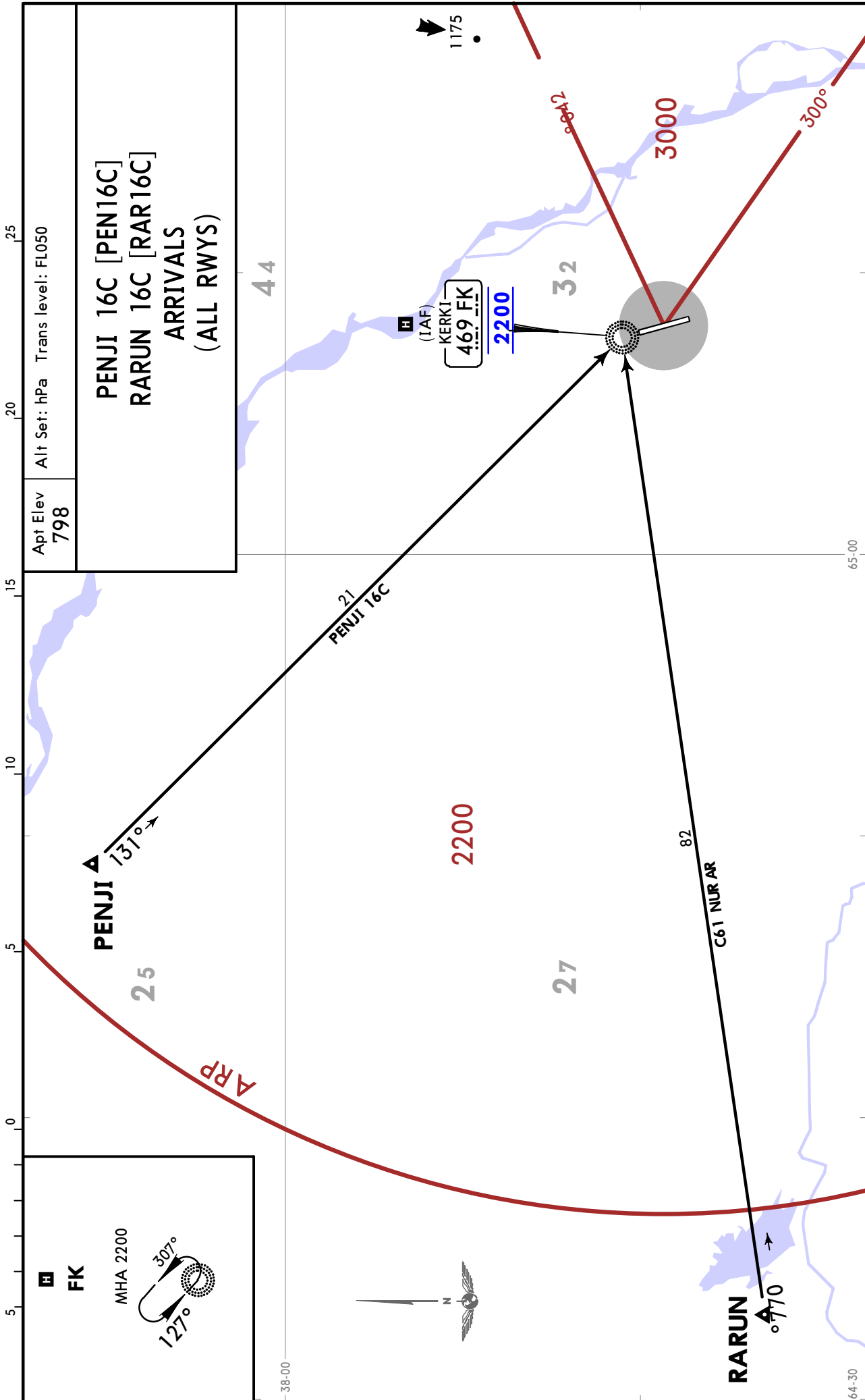
# KERKI, TURKMENISTAN

20 OCT 23

10-2E

Eff 2 Nov

STAR



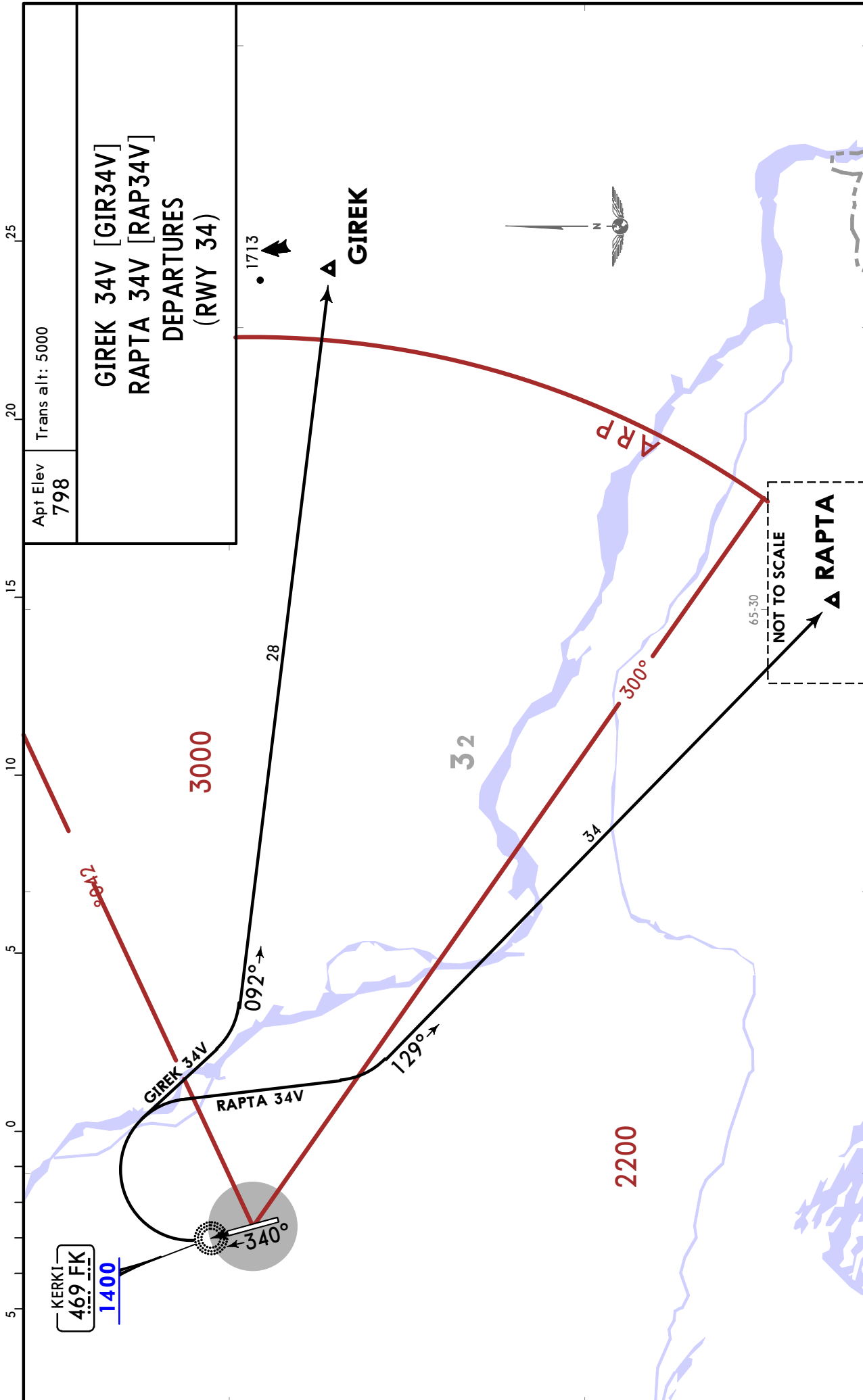


# UTAE/KEA KERKI

JEPPESEN  
26 NOV 21 10-3A Eff 2 Dec

# KERKI, TURKMENISTAN

SID

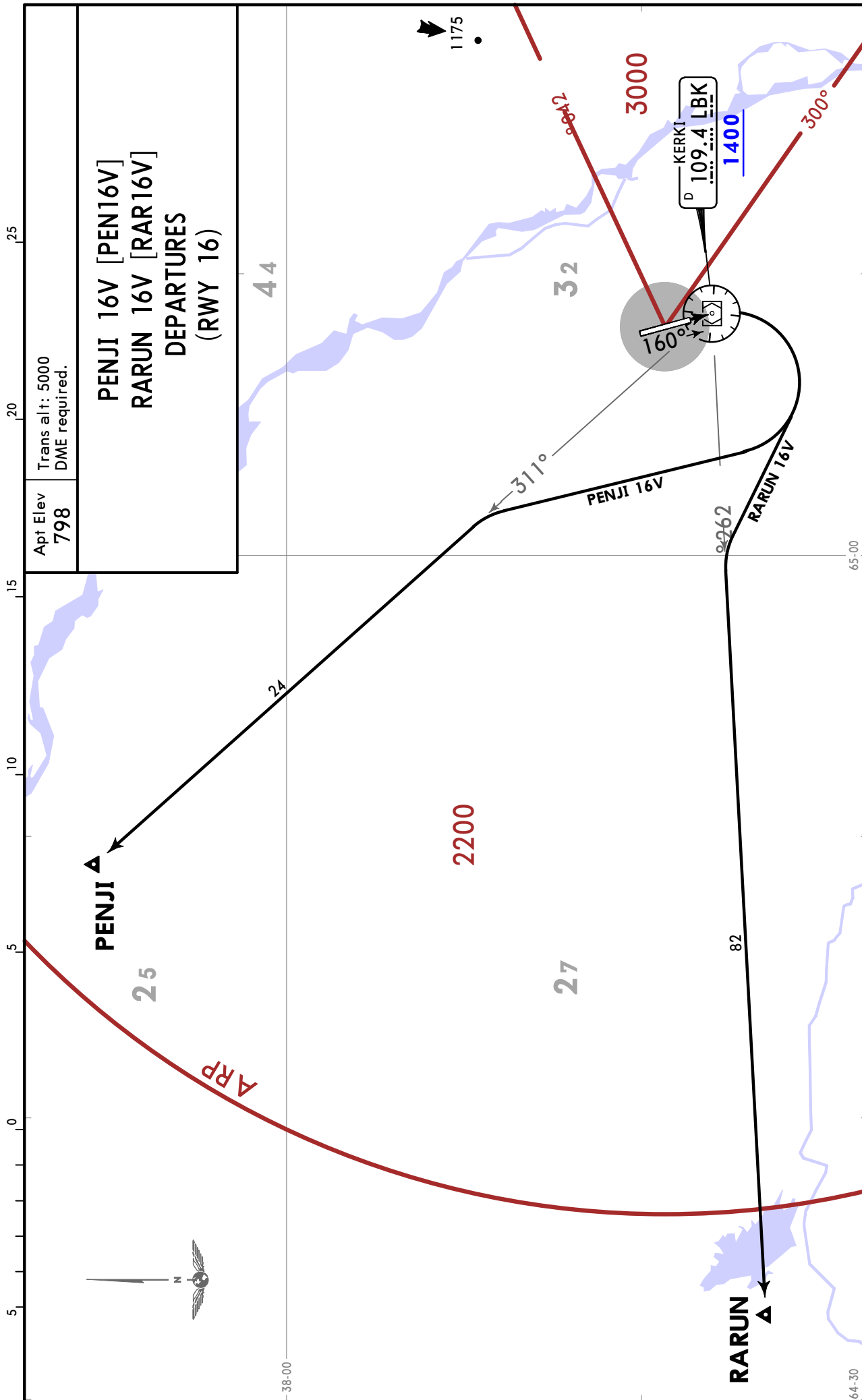


# UTAE/KEA KERKI

26 NOV 21 **10-3B** Eff 2 Dec

# KERKI, TURKMENISTAN

**SID**



CHANGES: New airport.

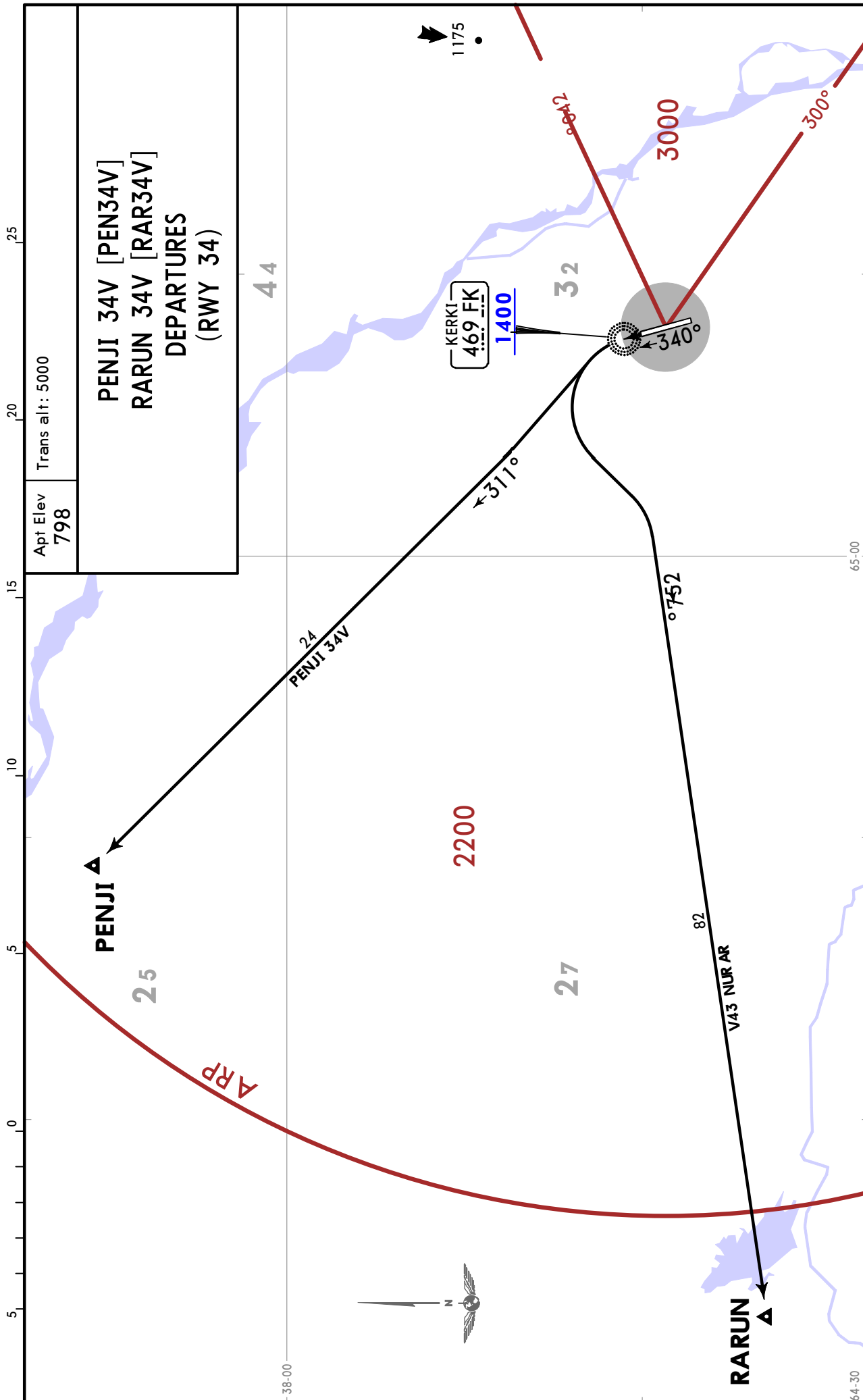
© JEPPESEN, 2021. ALL RIGHTS RESERVED.

UTAE/KEA  
KERKI

JEPPESEN  
26 NOV 21 10-3C Eff 2 Dec

KERKI, TURKMENISTAN

SID



CHANGES: New airport.

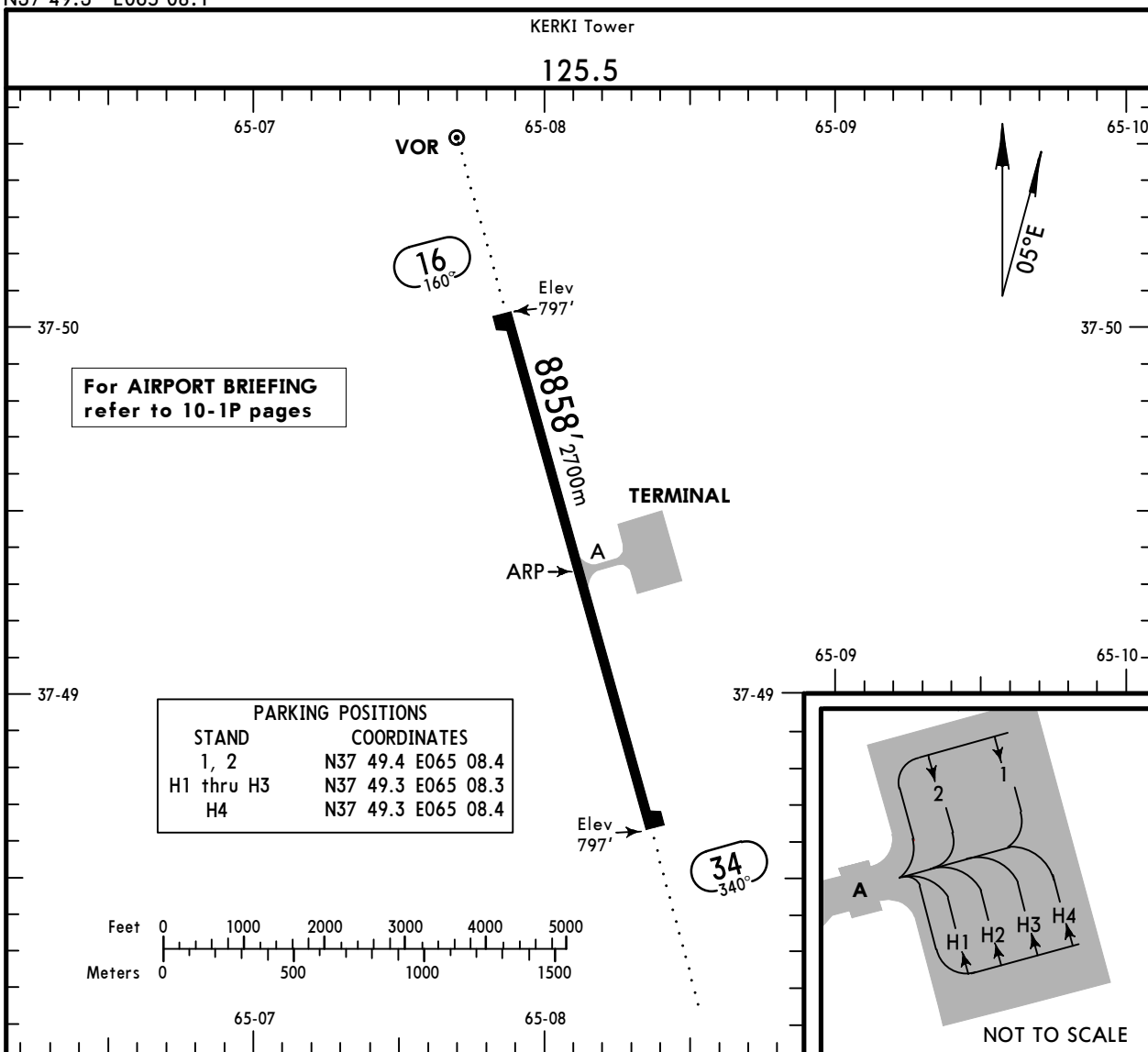
© JEPPESEN, 2021. ALL RIGHTS RESERVED.

**UTAE/KEA**  
 Apt Elev **798'**  
 N37 49.3 E065 08.1

**JEPPESSEN**  
 11 FEB 22 **(10-9)** Eff 24 Feb

**KERKI, TURKMENISTAN**

**KERKI**



**ADDITIONAL RUNWAY INFORMATION**

RWY	LANDING BEYOND	USABLE LENGTHS		TAKE-OFF	WIDTH
		Threshold	Glide Slope		
16 34	RL (60m) ALS PAPI-L (angle 3.0°)			①	148' 45m

**① TAKE-OFF RUN AVAILABLE**

**RWY 16:**

From rwy head 8858' (2700m)  
 twy A int 4429' (1350m)

**RWY 34:**

From rwy head 8858' (2700m)  
 twy A int 4429' (1350m)

State	TAKE-OFF	
	RL	RCLM
	DAY	DAY
	NIGHT	
A	R400m	R500m
B		
C		
D		

# UTAE/KEA KERKI

**JEPPESEN**  
8 MAR 24 (13-1) Eff 21 Mar

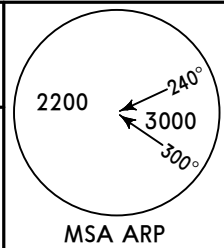
# KERKI, TURKMENISTAN VOR Rwy 16

KERKI Tower

125.5

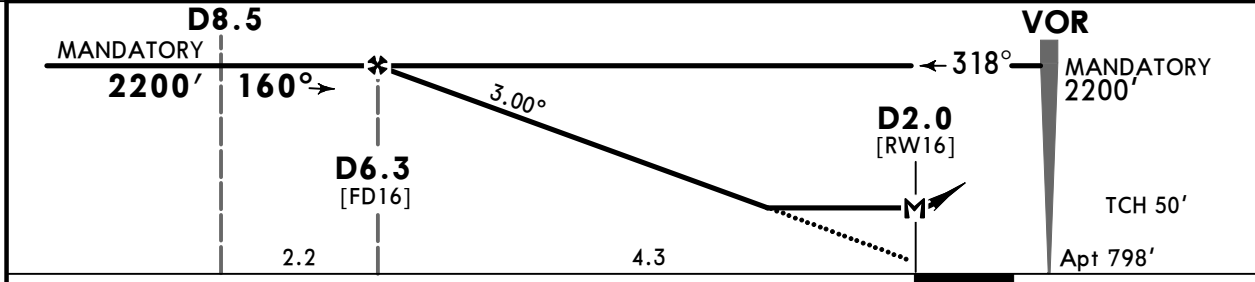
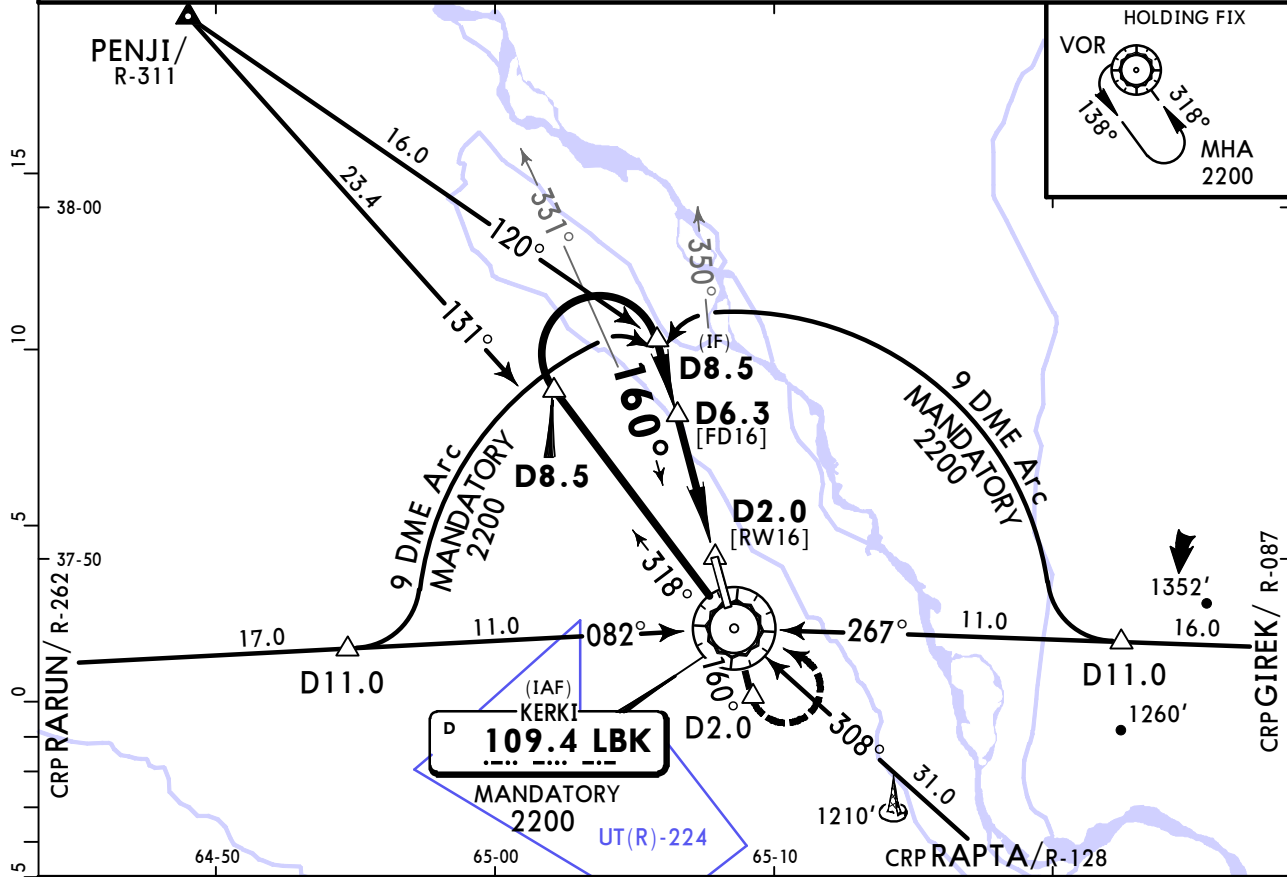
BRIEFING STRIP™

VOR LBK <b>109.4</b>	Final Apch Crs <b>160°</b>	<b>D6.3</b> MANDATORY <b>2200'</b> (1402')	MDA(H) <b>1150'</b> (352')	Apt Elev 798'
----------------------------	----------------------------------	--	-------------------------------	---------------



**MISSED APCH:** Climb STRAIGHT AHEAD to 2200' to VOR. After passing VOR continue rwy hdg to D2.0, then turn LEFT to join holding at VOR. MAX 200 KT.  
**MISSED APCH WITH COMM FAILURE:** Set SSR transponder to code 7600.

Alt Set: hPa      Apt Elev: 29 hPa      Trans level: FL050      Trans alt: 5000'  
 DME required.



Gnd speed-Kts	70	90	100	120	140	160	ALS PAPI	Refer to Missed Apch above
Descent Angle 3.00°	372	478	531	637	743	849		
MAP at D2.0								

**State** STRAIGHT-IN LANDING  
 MDA(H) **1150'** (352')

PANS OPS	A	V1100m	ALS out	V2100m
	B	V1300m		V2300m
	C			
	D			

# UTAE/KEA KERKI

**JEPPESEN**  
8 MAR 24 **(13-2)** Eff 21 Mar

# KERKI, TURKMENISTAN VOR Rwy 34

KERKI Tower  
**125.5**

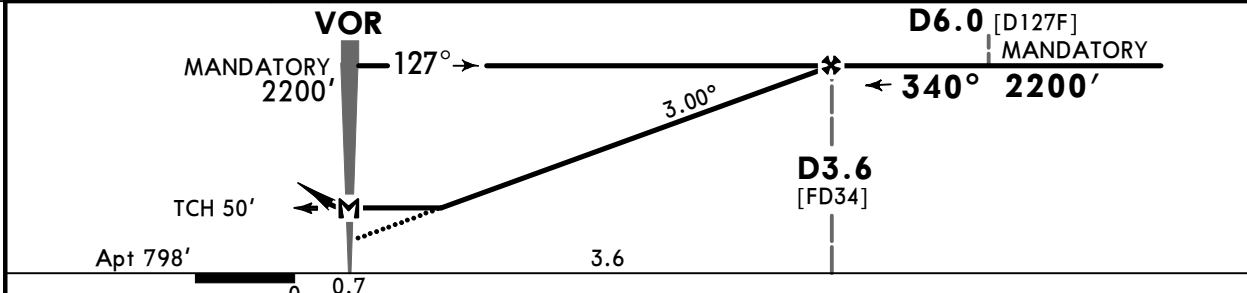
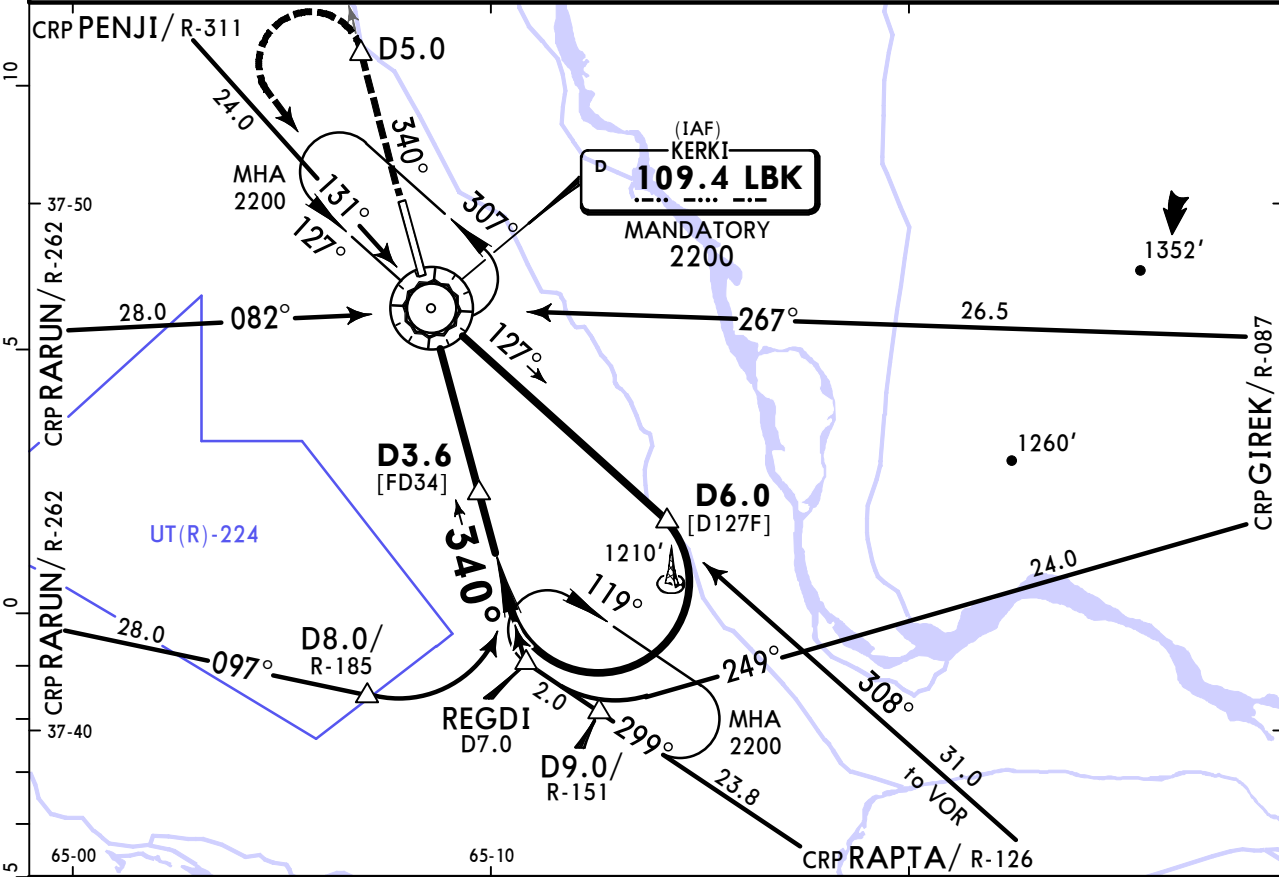
VOR LBK <b>109.4</b>	Final Apch Crs <b>340°</b>	<b>D3.6</b> MANDATORY <b>2200'</b> (1402')	MDA(H) <b>1150'</b> (352')	Apt Elev 798'	<p>MSA LKB VOR</p>
----------------------------	----------------------------------	--	-------------------------------	---------------	--------------------

**MISSED APCH:** Climb STRAIGHT AHEAD to 2200' via R-340 to D5.0, then turn LEFT to join holding at VOR. MAX 200 KT.

**MISSED APCH WITH COMM FAILURE:** Set SSR transponder to code 7600.

Alt Set: hPa      Apt Elev: 29 hPa      Trans level: FL050      Trans alt: 5000'

DME required.



Gnd speed-Kts	70	90	100	120	140	160	ALS PAPI	2200'	R-340 via LBK 109.4	D5.0
Descent Angle	3.00°	372	478	531	637	743		849	↑	

**State** STRAIGHT-IN LANDING

MDA(H) **1150'** (352')

ALS out

A	V1100m	V2100m
B	V1300m	V2300m
C		
D		

CHANGES: None.

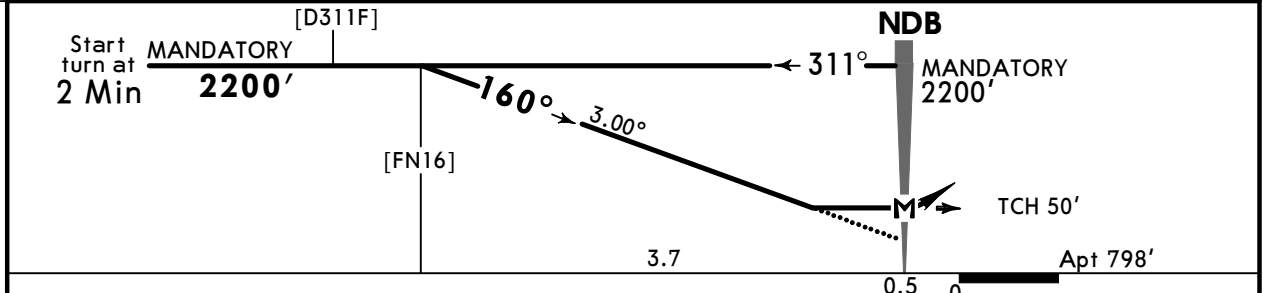
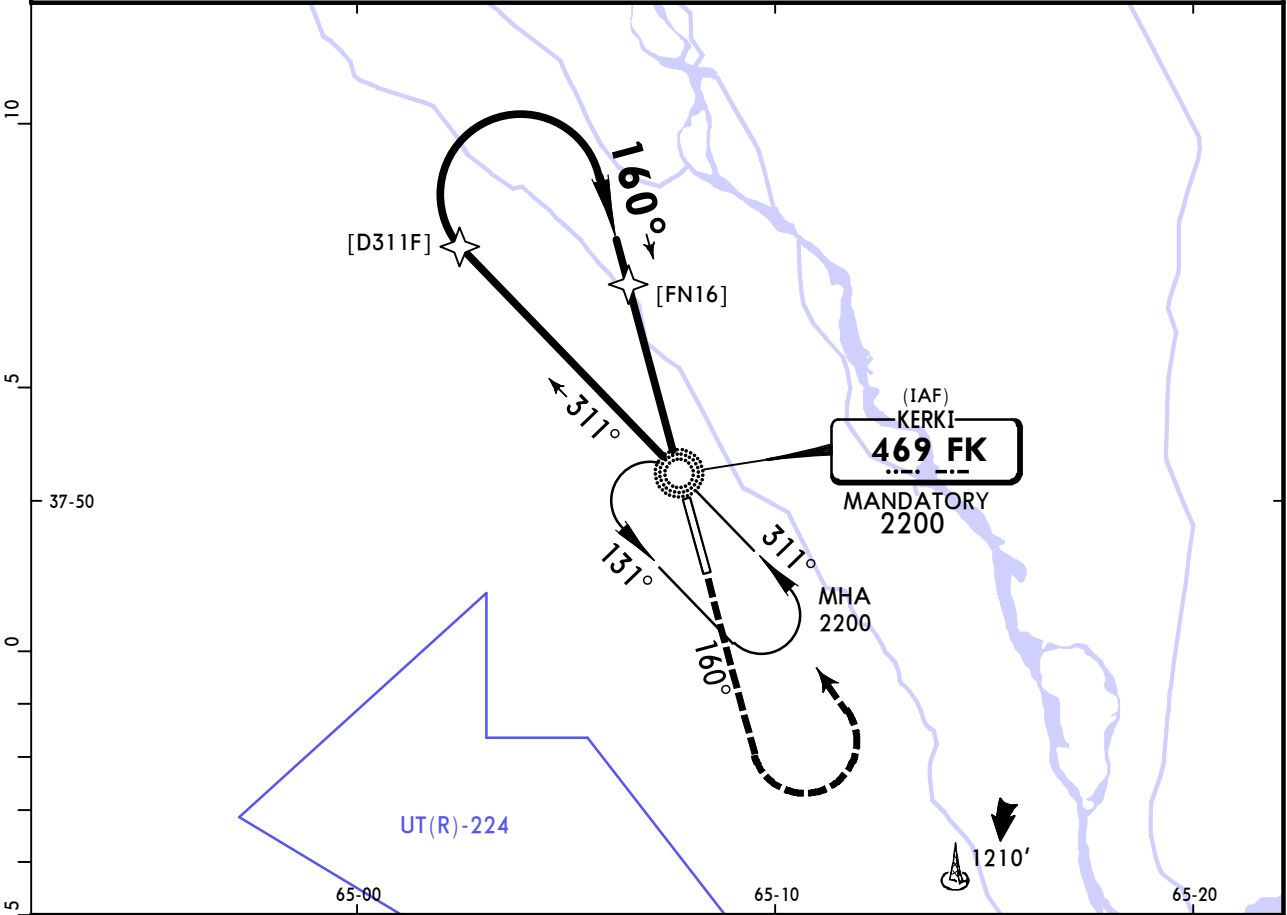
**UTAE/KEA**  
**KERKI**

**JEPPESEN**  
28 JUN 24 (16-1) **Eff 11 Jul**

**KERKI, TURKMENISTAN**  
**NDB Rwy 16**

KERKI Tower  
**125.5**

NDB FK <b>469</b>	Final Apch Crs <b>160°</b>	[FN16] MANDATORY <b>2200'</b> (1402')	MDA(H) <b>1200'</b> (402')	Apt Elev 798'	<p>MSA ARP</p>		
<p><b>MISSED APCH:</b> Climb STRAIGHT AHEAD to 2200' to NDB. After passing NDB continue rwy hdg for 1 min 30 sec, then turn LEFT to join holding at NDB. MAX 200 KT.</p> <p><b>MISSED APCH WITH COMM FAILURE:</b> Set SSR transponder to code 7600.</p>							
Alt Set: hPa		Apt Elev: 29 hPa		Trans level: FL050		Trans alt: 5000'	



Gnd speed-Kts	70	90	100	120	140	160	ALS PAPI	Refer to Missed Apch above
Descent Angle	3.00°	372	478	531	637	743		
MAP at NDB								

**State** STRAIGHT-IN LANDING

MDA(H) **1200'** (402')

ALS out

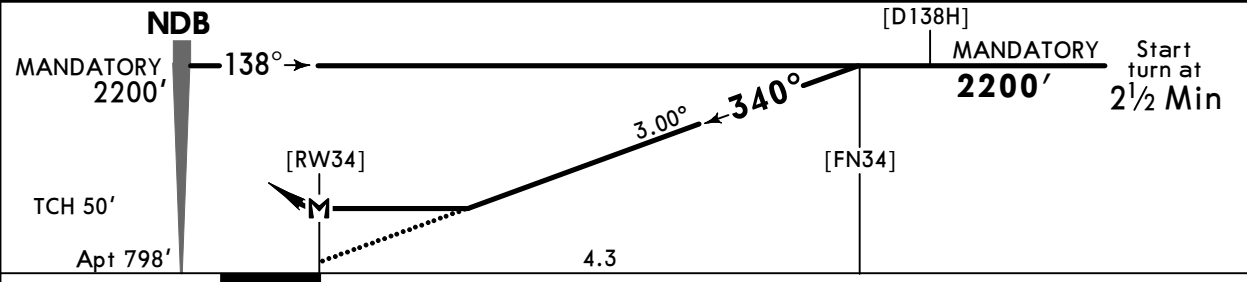
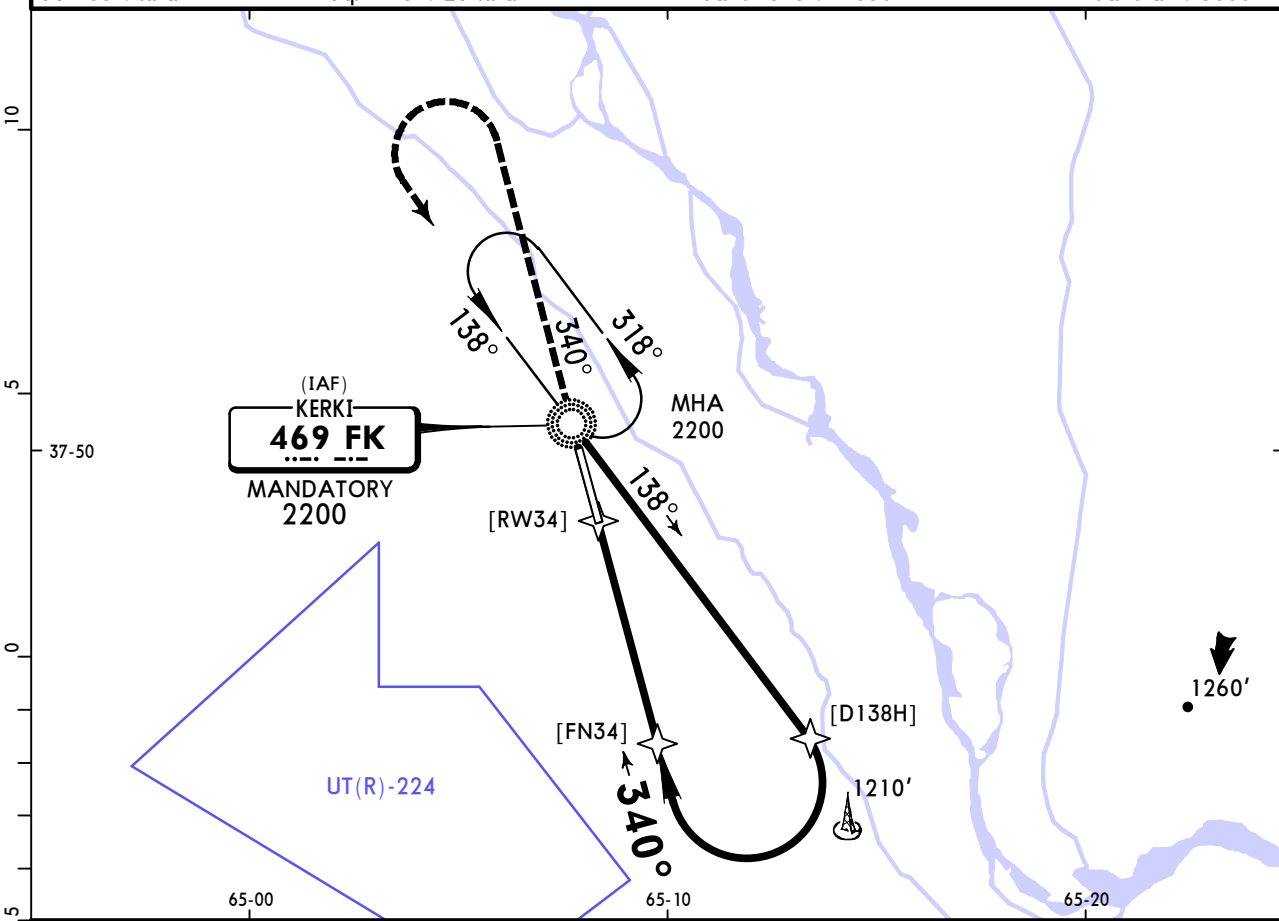
A	V1300m	V2100m
B	V1800m	V2300m
C		
D		

# UTAE/KEA KERKI

**JEPPESEN**  
28 JUN 24 **(16-2)** Eff 11 Jul

# KERKI, TURKMENISTAN NDB Rwy 34

KERKI Tower					
125.5					
NDB FK <b>469</b>	Final Apch Crs <b>340°</b>	[FN34] MANDATORY <b>2200'</b> (1402')	MDA(H) <b>1200'</b> (402')	Apt Elev 798'	<p>MSA ARP</p>
<b>MISSED APCH:</b> Climb STRAIGHT AHEAD to 2200' to NDB. After passing NDB continue rwy hdg for 1 min 30 sec, then turn LEFT to join holding at NDB. MAX 200 KT. <b>MISSED APCH WITH COMM FAILURE:</b> Set SSR transponder to code 7600.					
Alt Set: hPa		Apt Elev: 29 hPa		Trans level: FL050	
				Trans alt: 5000'	



Gnd speed-Kts	70	90	100	120	140	160	ALS PAPI	Refer to Missed Apch above
Descent Angle	3.00°	372	478	531	637	743		
MAP at RW34								

**State** STRAIGHT-IN LANDING

MDA(H) **1200'** (402')

ALS out

A	V1300m	V2100m
B		
C	V1800m	V2300m
D		



### Chart changes since cycle 04-2025

ADD = added chart, REV = revised chart, DEL = deleted chart.

ACT	PROCEDURE IDENT	INDEX	REV DATE	EFF DATE
-----	-----------------	-------	----------	----------

**KERKI, (KERKI - UTAE)**

## TERMINAL CHART CHANGE NOTICES

No Chart Change Notices for Airport UTAE