

## List of pages in this Trip Kit

Trip Kit Index

Airport Information For UTAM

Terminal Charts For UTAM

Revision Letter For Cycle 05-2025

Change Notices

Notebook

## General Information

Location: MARY TKM  
ICAO/IATA: UTAM / MYP  
Lat/Long: N37° 37.30', E061° 53.78'  
Elevation: 728 ft

Airport Use: Public  
Daylight Savings: Not Observed  
UTC Conversion: -5:00 = UTC  
Magnetic Variation: 5.0° E

Fuel Types: Jet A-1  
Customs: Yes  
Airport Type: IFR  
Landing Fee: Yes  
Control Tower: Yes  
Jet Start Unit: No  
LLWS Alert: No  
Beacon: No

Sunrise: 0034 Z  
Sunset: 1505 Z

## Runway Information

Runway: 17L  
Length x Width: 9186 ft x 148 ft  
Surface Type: concrete  
TDZ-Elev: 728 ft  
Lighting: Edge, ALS

Runway: 17R  
Length x Width: 12467 ft x 148 ft  
Surface Type: concrete  
TDZ-Elev: 725 ft  
Lighting: Edge, ALS, Centerline

Runway: 35L  
Length x Width: 12467 ft x 148 ft  
Surface Type: concrete  
TDZ-Elev: 728 ft  
Lighting: Edge, ALS, Centerline, TDZ

Runway: 35R  
Length x Width: 9186 ft x 148 ft  
Surface Type: concrete  
TDZ-Elev: 725 ft  
Lighting: Edge, ALS

## Communication Information

Mary Tower: 122.200

Mary Radar: 122.200 Secondary

Mary Radio: 624.000 Non-English

Mary Radar: 129.000 Secondary

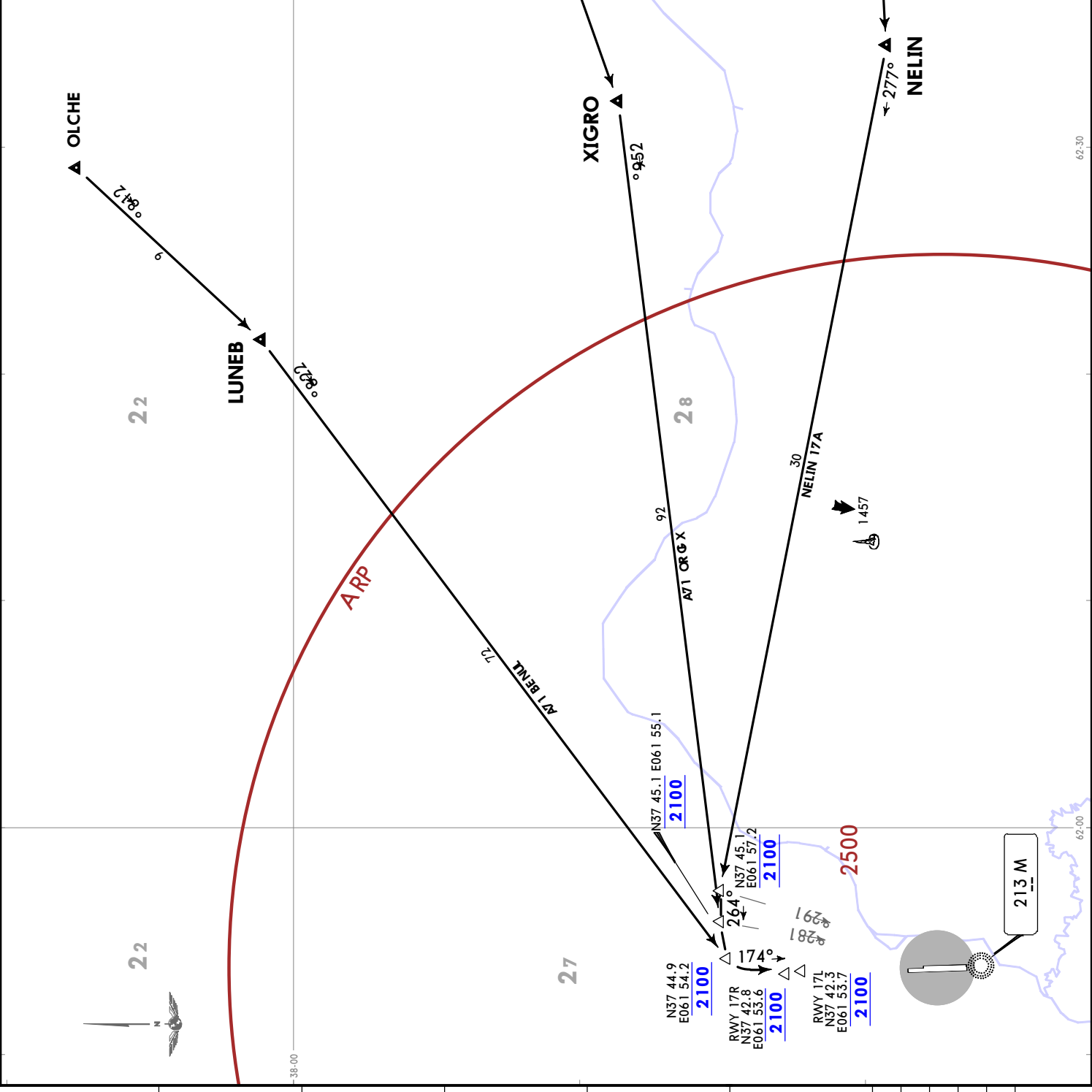
Mary Radar: 124.000

**UTAM/MYP**  
MARY

**JEPPESEMARY, TURKMENISTAN**  
STAR  
30 JUL 21 (10-2) EFF 12 AUG

Apt Elev  
728  
Alt Set: hPa Trans level: FL50

LUNEB 17A [LUN17A]  
NELIN 17A [NEL17A]  
XIGRO 17A [XIG17A]  
RWYS 17L/R ARRIVALS



UTAM/MYP  
MARY





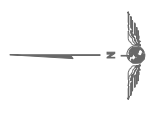
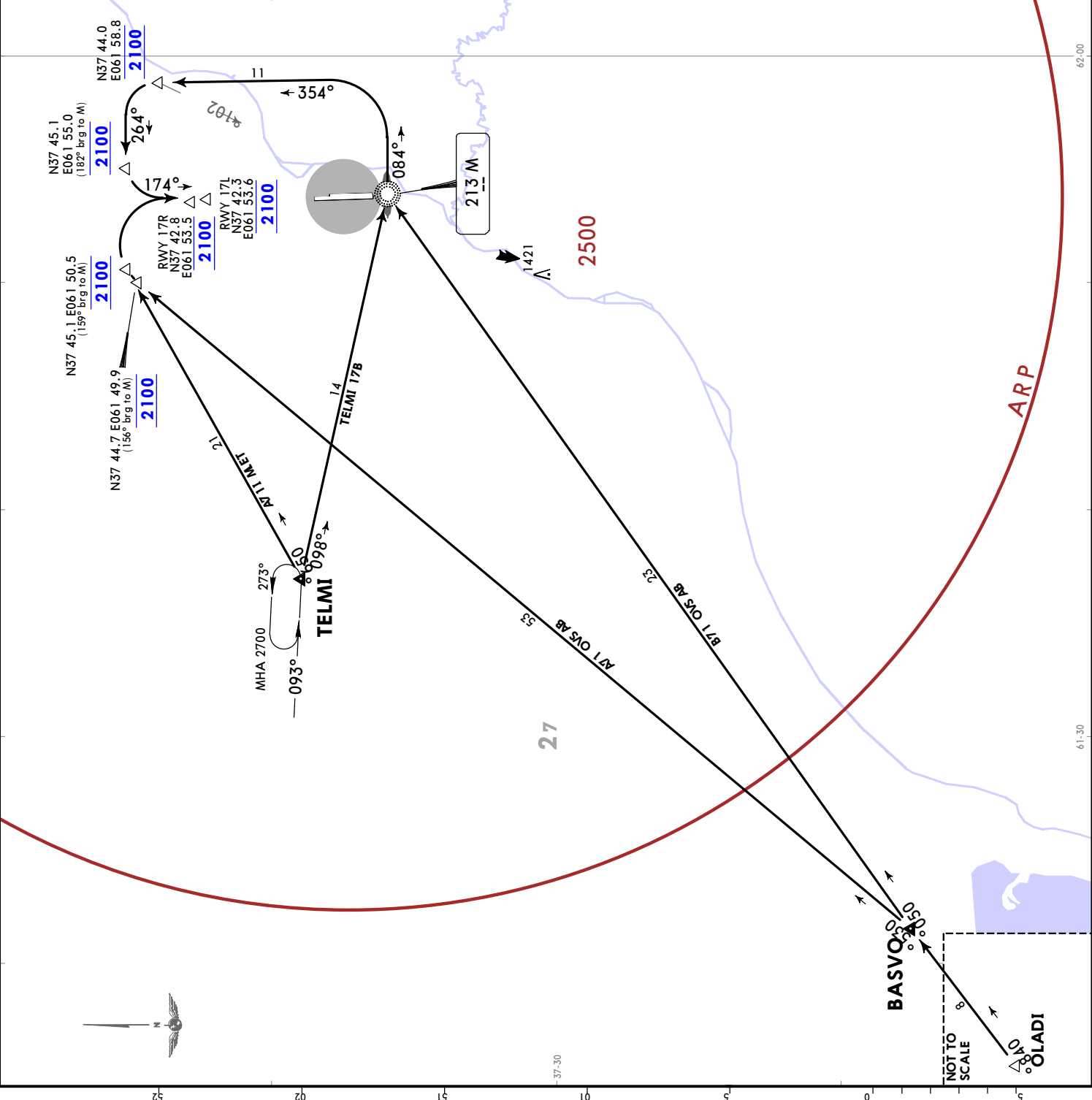


Apt Elev  
728  
Alt Set: hPa Trans level: FL50

**BASVO 17A [BAS17A]**  
**TELMi 17A [TEL17A]**

**BASVO 17B [BAS17B]**  
**TELMi 17B [TEL17B]**  
BY ATC

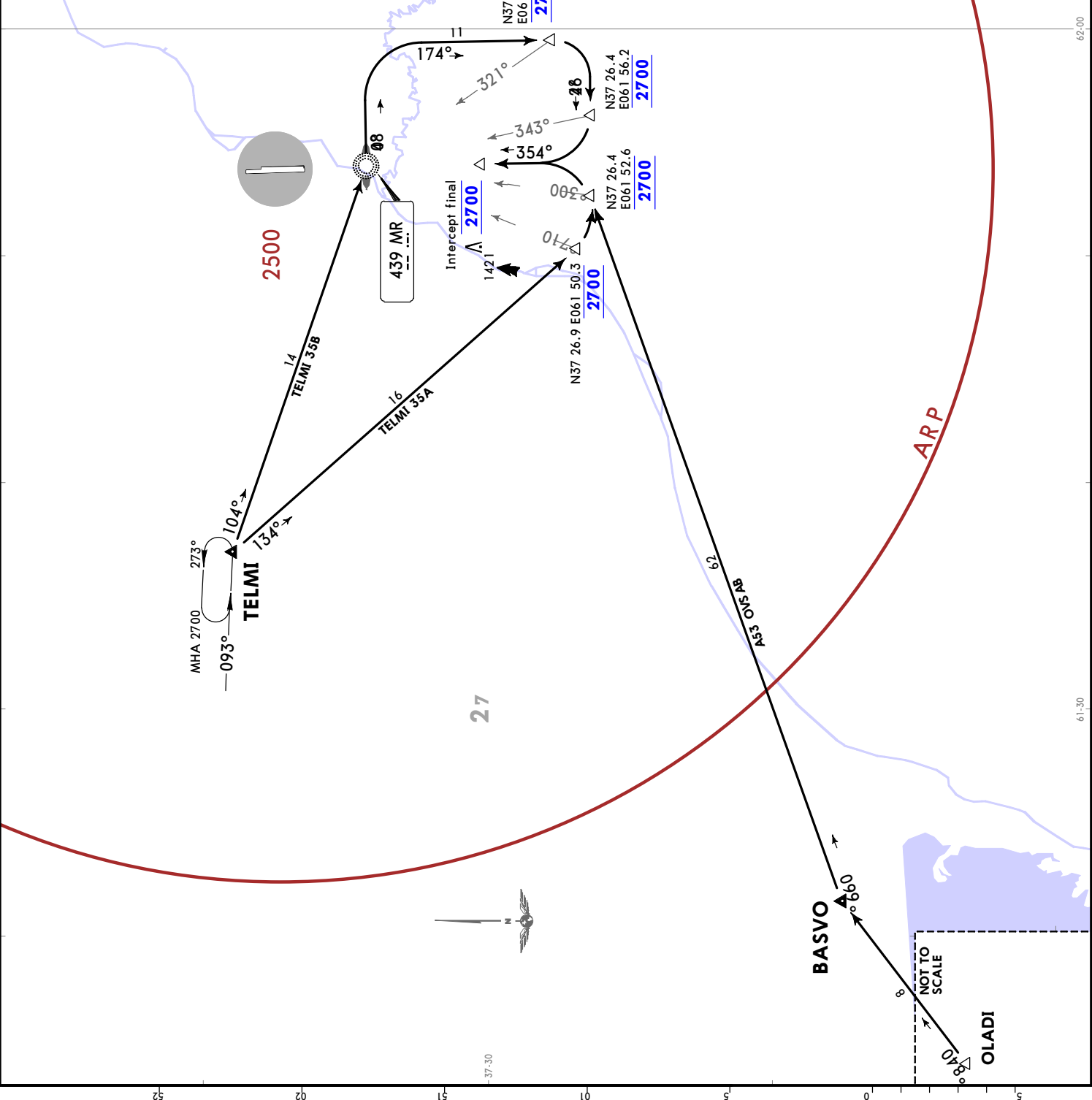
**RWYS 17L/R ARRIVALS**



UTAM/MYP  
MARY

JEPPESEN MARY, TURKMENISTAN  
STAR

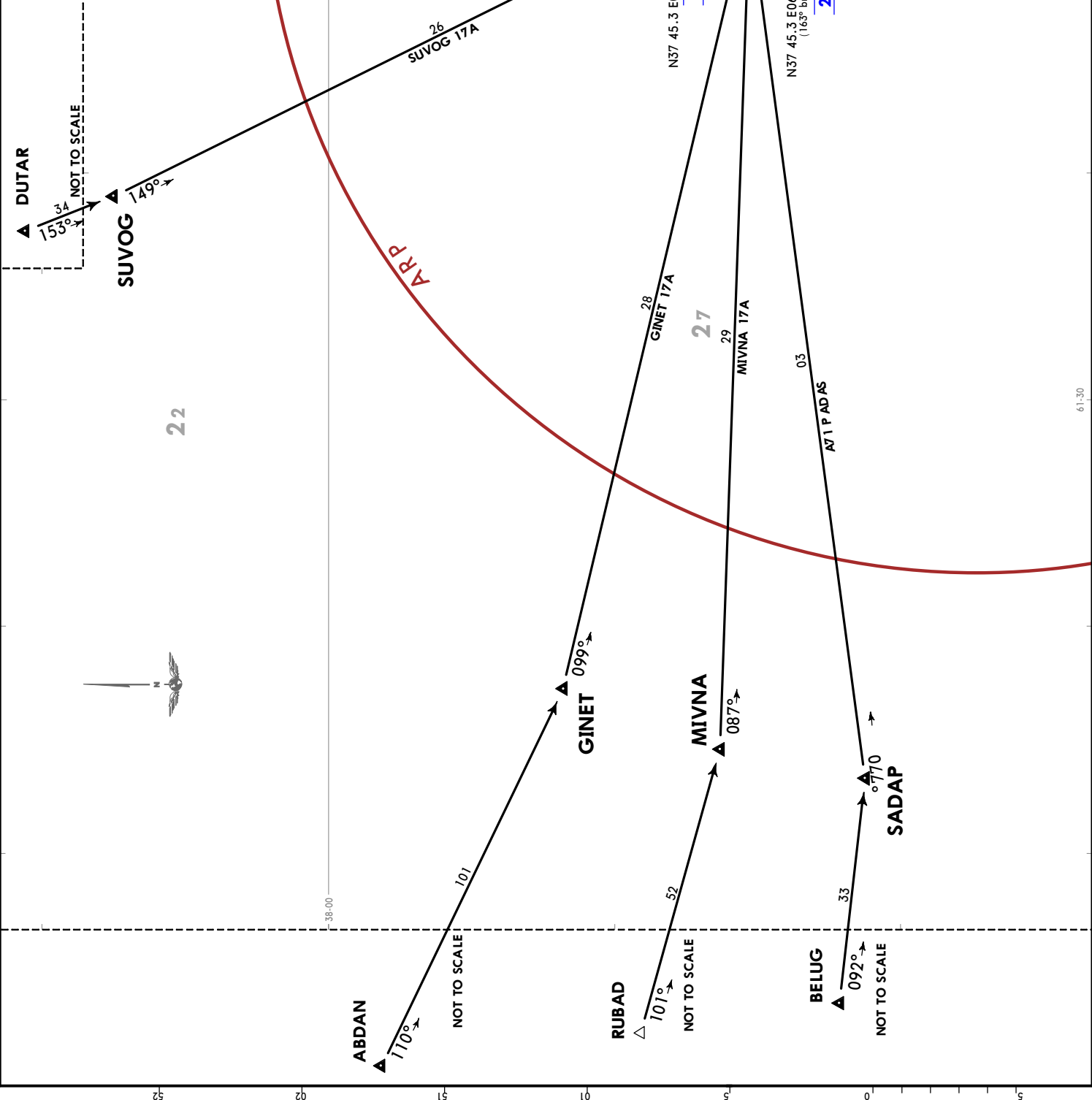
6 MAY 22 (10-2E) Eff 19 May 25  
Apt Elev 728  
Alt Set: hPa Trans level: FL50  
BASVO 35A [BAS35A]  
TELMI 35A [TEL35A]  
TELMI 35B [TEL35B]  
BY ATC  
RWYS 35L/R ARRIVALS



**JEPPESEN MARY, TURKMENISTAN**  
STAR  
30 JUL 21 (10-2F) Eff 12 Aug

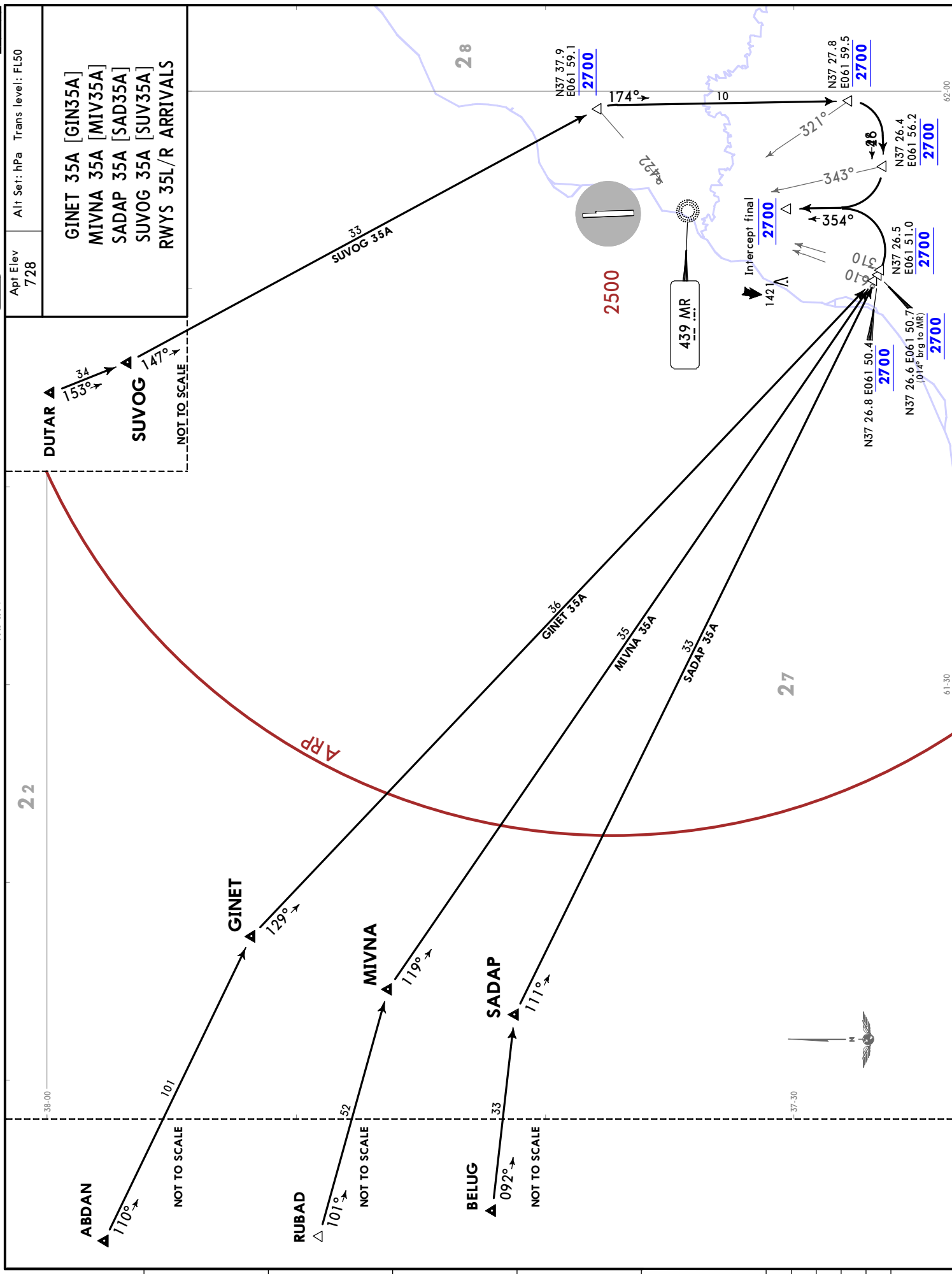
Apt Elev 728  
Alt Set: hPa Trans level: FL50

GINET 17A [GIN17A]
MIVNA 17A [MIV17A]
SADAP 17A [SAD17A]
SUVOG 17A [SUV17A]
RWYS 17L/R ARRIVALS



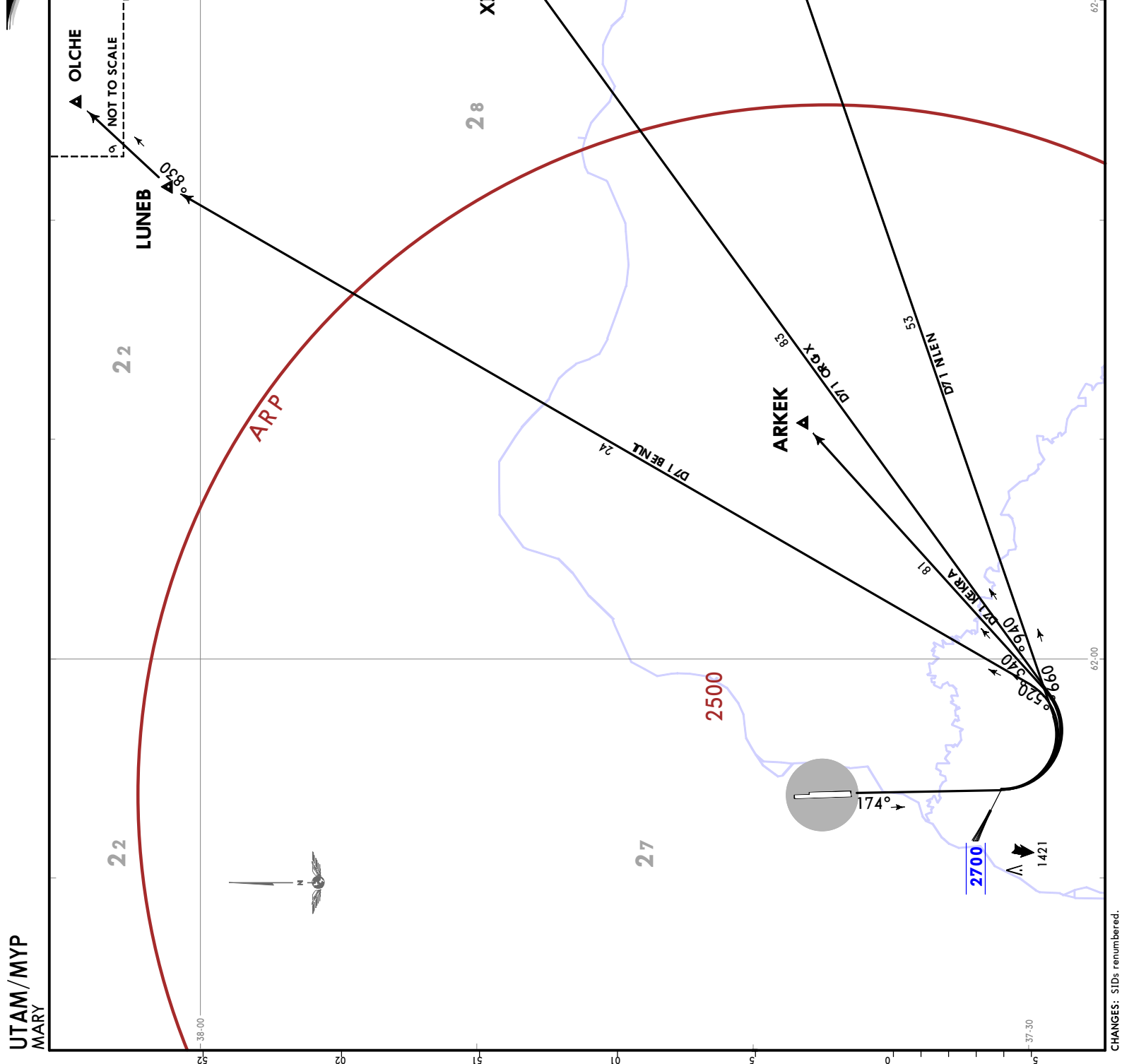
**UTAM/MYP**  
MARY

GINET 35A [GIN35A]  
MIVNA 35A [MIV35A]  
SADAP 35A [SAD35A]  
SUVOG 35A [SUV35A]  
RWYS 35L/R ARRIVALS



**JEPPESEN MARY TURKMENISTAN**  
30 JUL 21 10-3 **EFF 12 AUG** **SID**

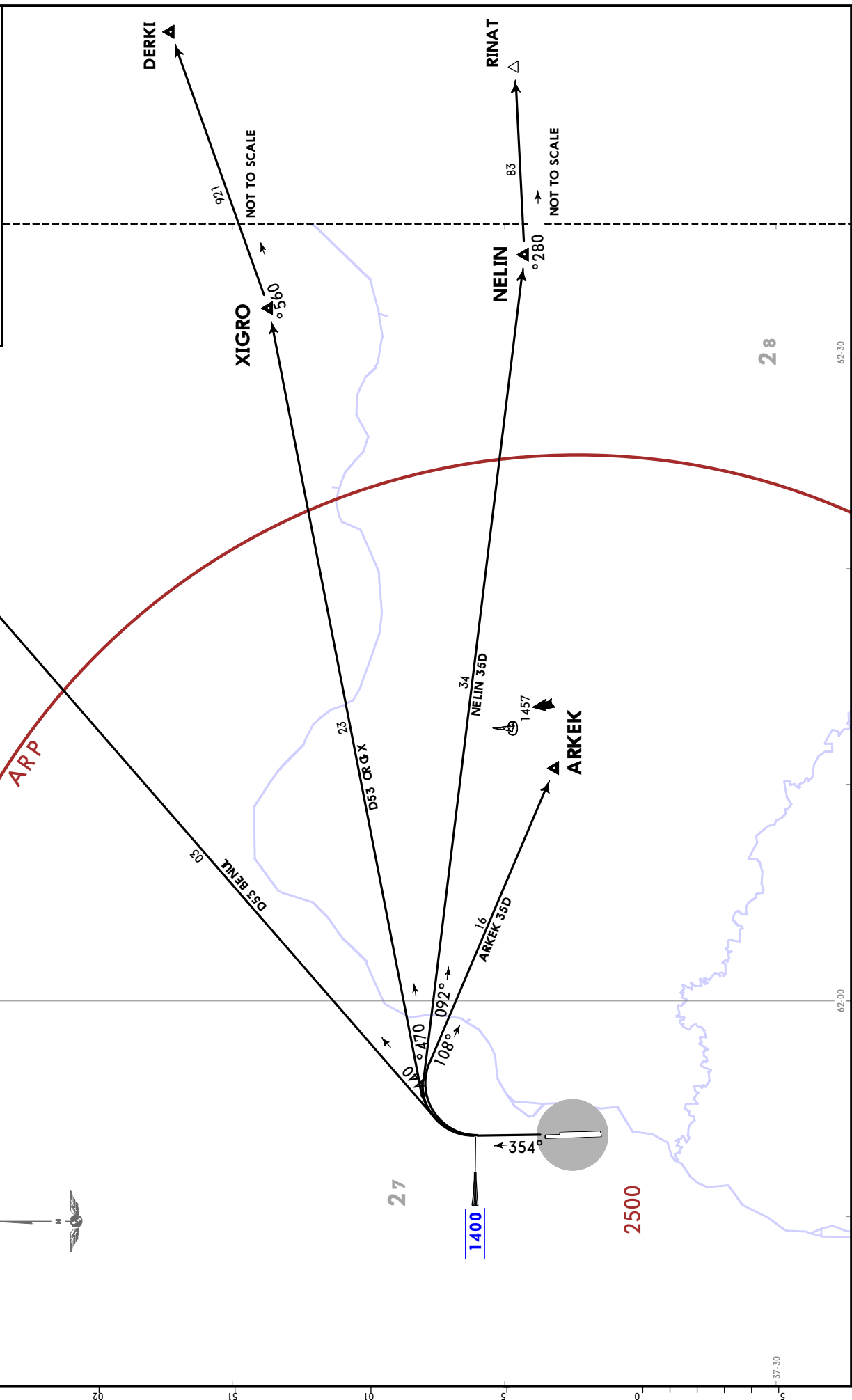
Apt Elev 728  
Trans alt: 4000  
**ARKEK 17D [ARK17D]**  
**LUNEB 17D [LUN17D]**  
**NELIN 17D [NEL17D]**  
**XIGRO 17D [XIG17D]**  
**RWYS 17L/R DEPARTURES**



**UTAM/MYP**  
MARY

**JEPPESEN MARY TURKMENISTAN**  
30 JUL 21 (10-3A) EFF 12 AUG

**UTAM/MYP MARY**  
Apt Elev 728  
Trans alt: 4000  
ARKEK 35D [ARK35D]  
LUNEB 35D [LUN35D]  
NELIN 35D [NEL35D]  
XIGRO 35D [XIG35D]  
RWYS 35L/R DEPARTURES

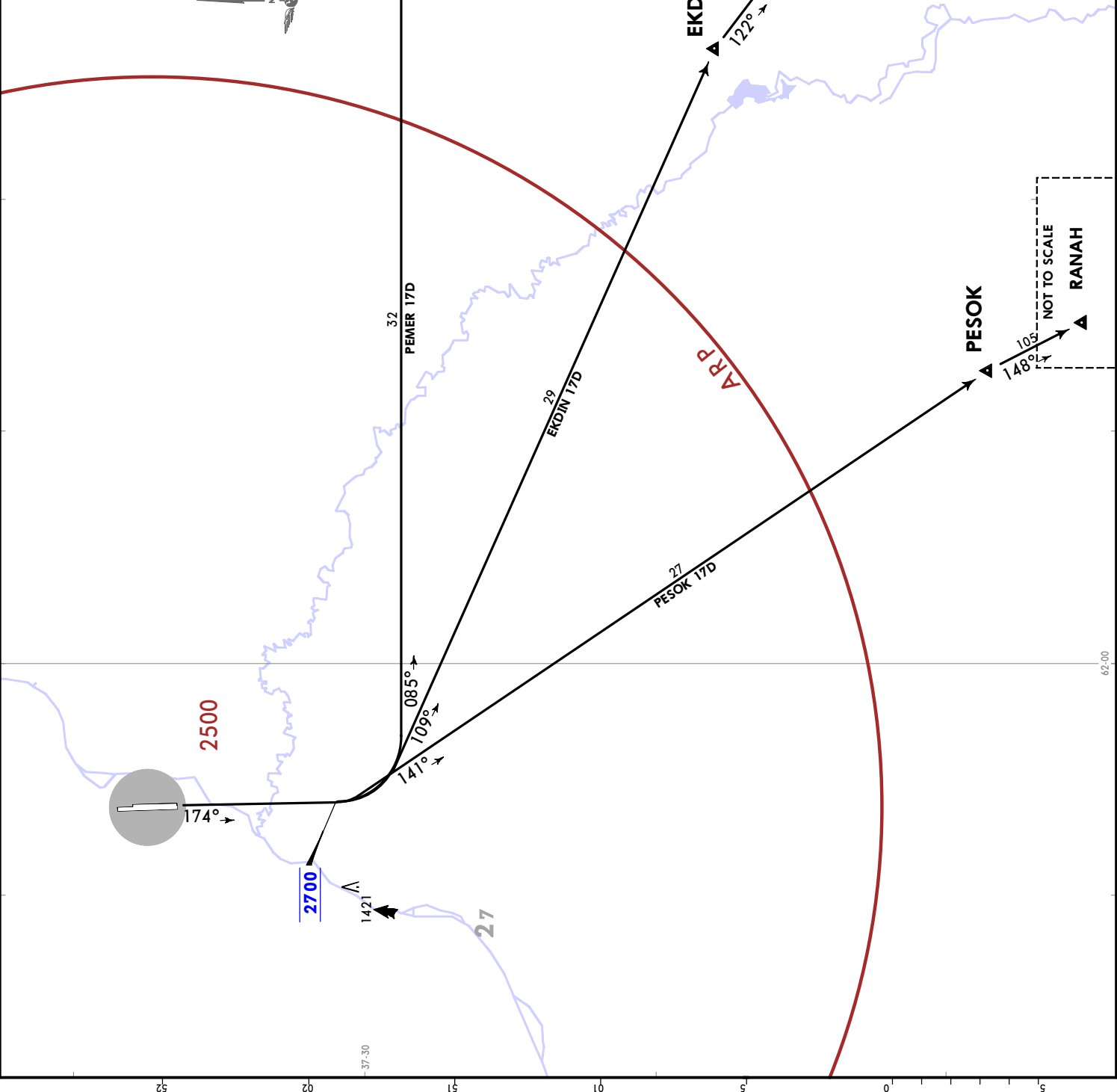


**UTAM/MYP MARY**

**JEPPESEN**  
30 JUL 21 (10-3B) EFF 12 AUG  
UTAM/MYP  
MARY

**TURKMENISTAN**  
SID

Apt Elev  
728  
Trans alt: 4000  
EKDIN 17D [EKD17D]  
PEMER 17D [PEM17D]  
PESOK 17D [PES17D]  
RWYS 17L/R DEPARTURES

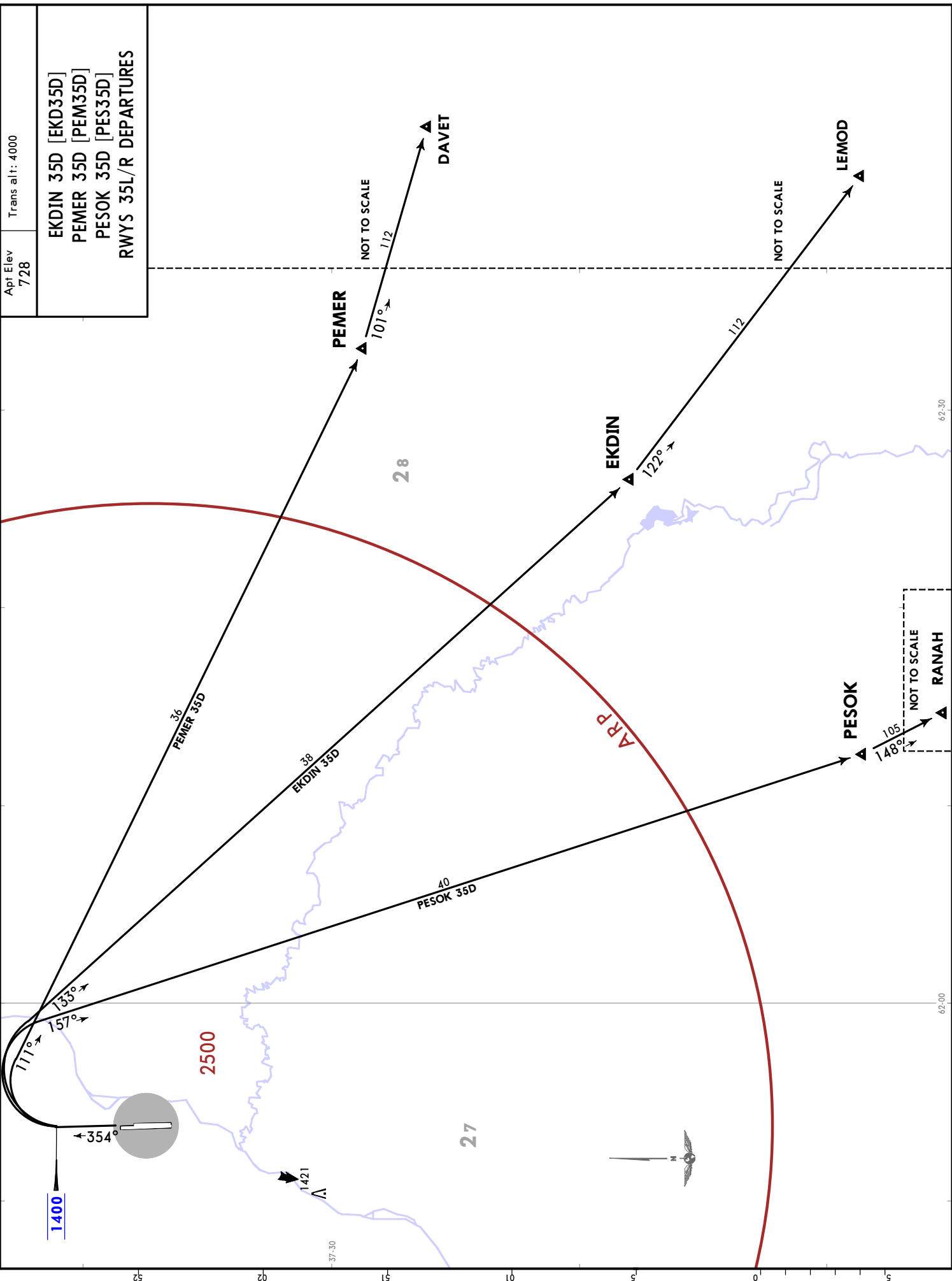


UTAM/MYP  
MARY

**JEPPESEN** MARY, TURKMENISTAN  
30 JUL 21 (10-3C) EFF 12 AUG

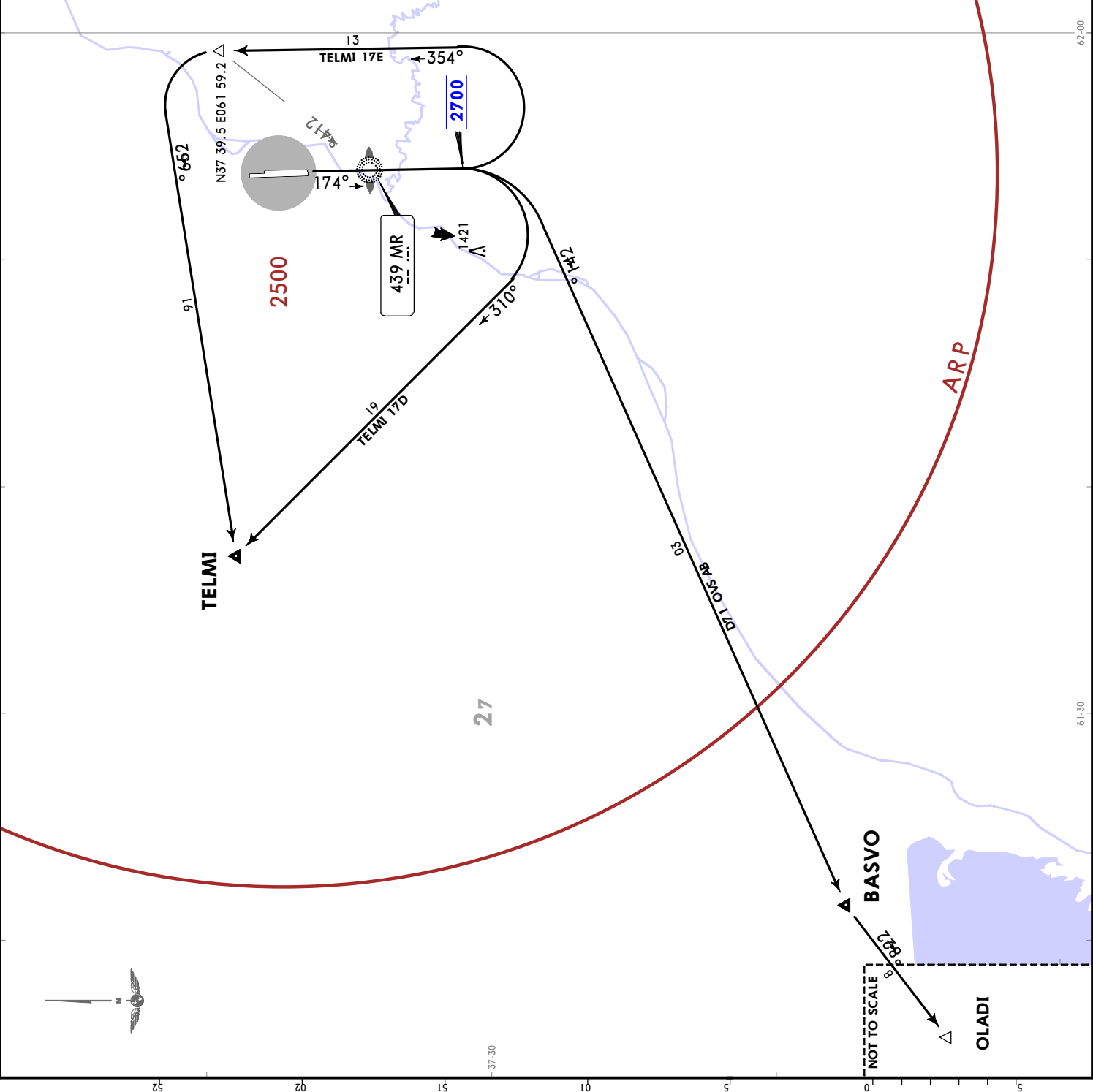
UTAM/MYP  
MARY

Apt Elev 728	Trans alt: 4000
EKDIN 35D [EKD35D] PEMER 35D [PEM35D] PESOK 35D [PES35D] RWYS 35L/R DEPARTURES	



**JEPPESEN MARY, TURKMENISTAN**  
30 JUL 21 (10-3D) Eff 12 Aug

**SID**  
Apt Elev 728  
Trans alt: 4000  
**BASVO 17D [BAS17D]**  
**TELM 17D [TEL17D]**  
**TELM 17E [TEL17E]**  
BY ATC  
**RWYS 17L/R DEPARTURES**



**UTAM/MYP**  
MARY

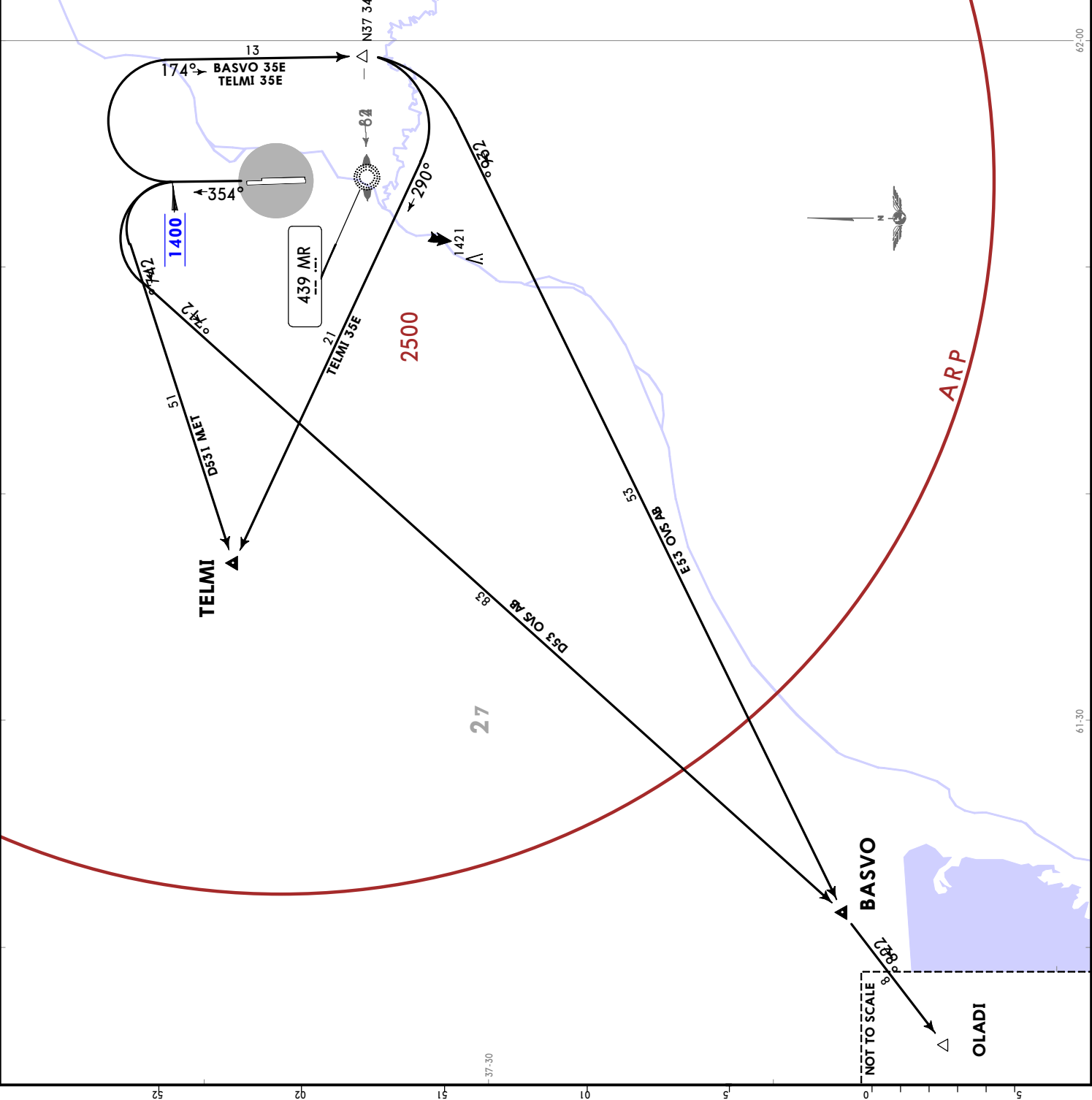


NOT TO SCALE

**JEPPESEN MARY, TURKMENISTAN**  
SID  
30 JUL 21 (10-3E) Eff 12 Aug

**UTAM/MYP**  
MARY

Apt Elev 728	Trans alt: 4000
<b>BASVO 35D [BAS35D]</b> <b>TELMI 35D [TEL35D]</b>	
<b>BASVO 35E [BAS35E]</b> <b>TELMI 35E [TEL35E]</b> BY ATC	
<b>RWYS 35L/R DEPARTURES</b>	





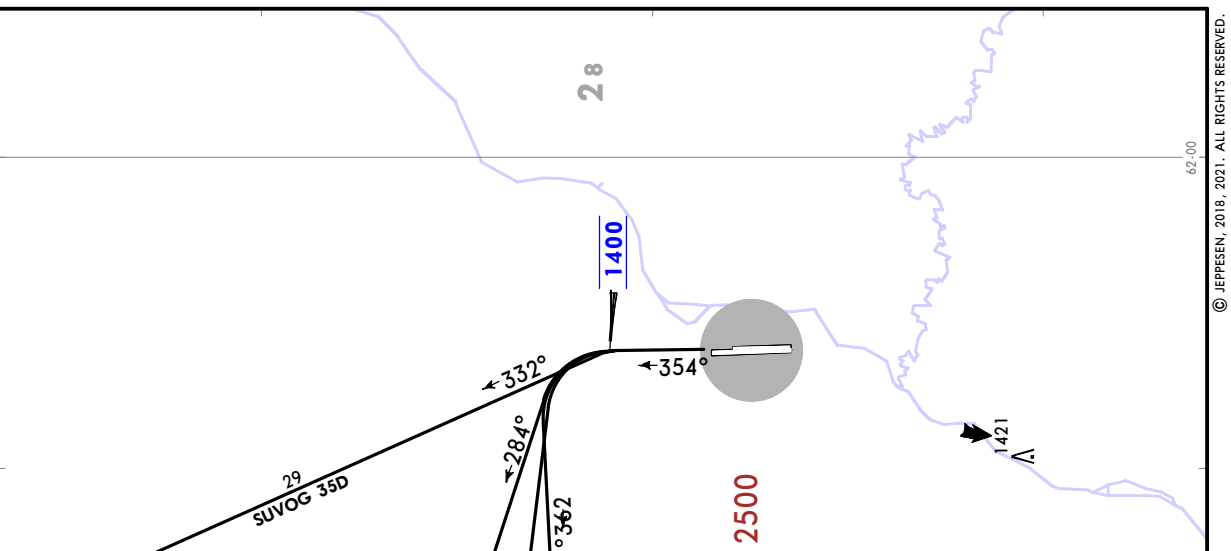
**JEPPESEN MARY TURKMENISTAN**  
30 JUL 21 (10-3G) Eff 12 Aug

**UTAM/MYP**  
MARY

Apt Elev  
728

Trans alt: 4000

**GINET 35D [GIN35D]**  
**MIVNA 35D [MIV35D]**  
**SADAP 35D [SAD35D]**  
**SUVOG 35D [SUV35D]**  
**RWYS 35L/R DEPARTURES**



**DUTAR** ▲

34 ← 334°

**SUVOG** ▲

NOT TO SCALE

**ABBDAN** ▲

NOT TO SCALE

101

**GINET** ▲

← 292°

**RUBAD** ▲

NOT TO SCALE

52

**MIVNA** ▲

← 281°

**BELUG** ▲

NOT TO SCALE

33

**SADAP** ▲

← 272°

32

**GINET 35D**

32

**MIVNA 35D**

33

**D5P AD AS**

332°

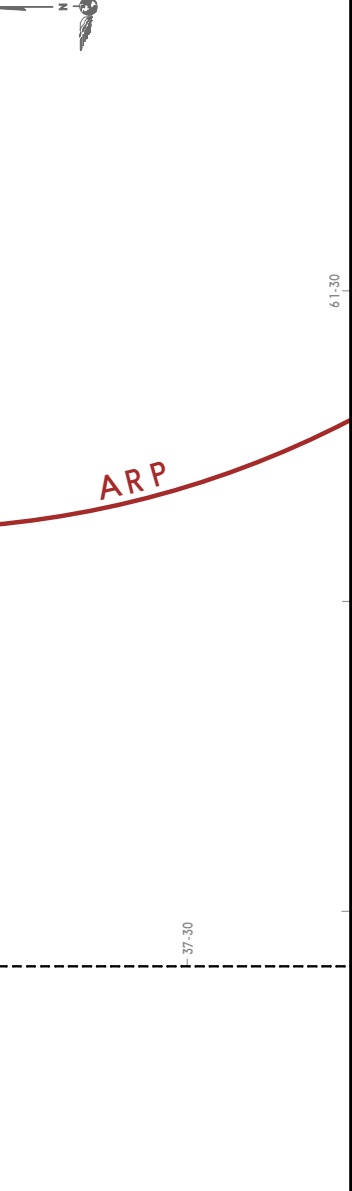
284°

273°

362°

354°

1400



22

27

28

ARP

38-00

37-30

61-30

62-00

# UTAM/MYP

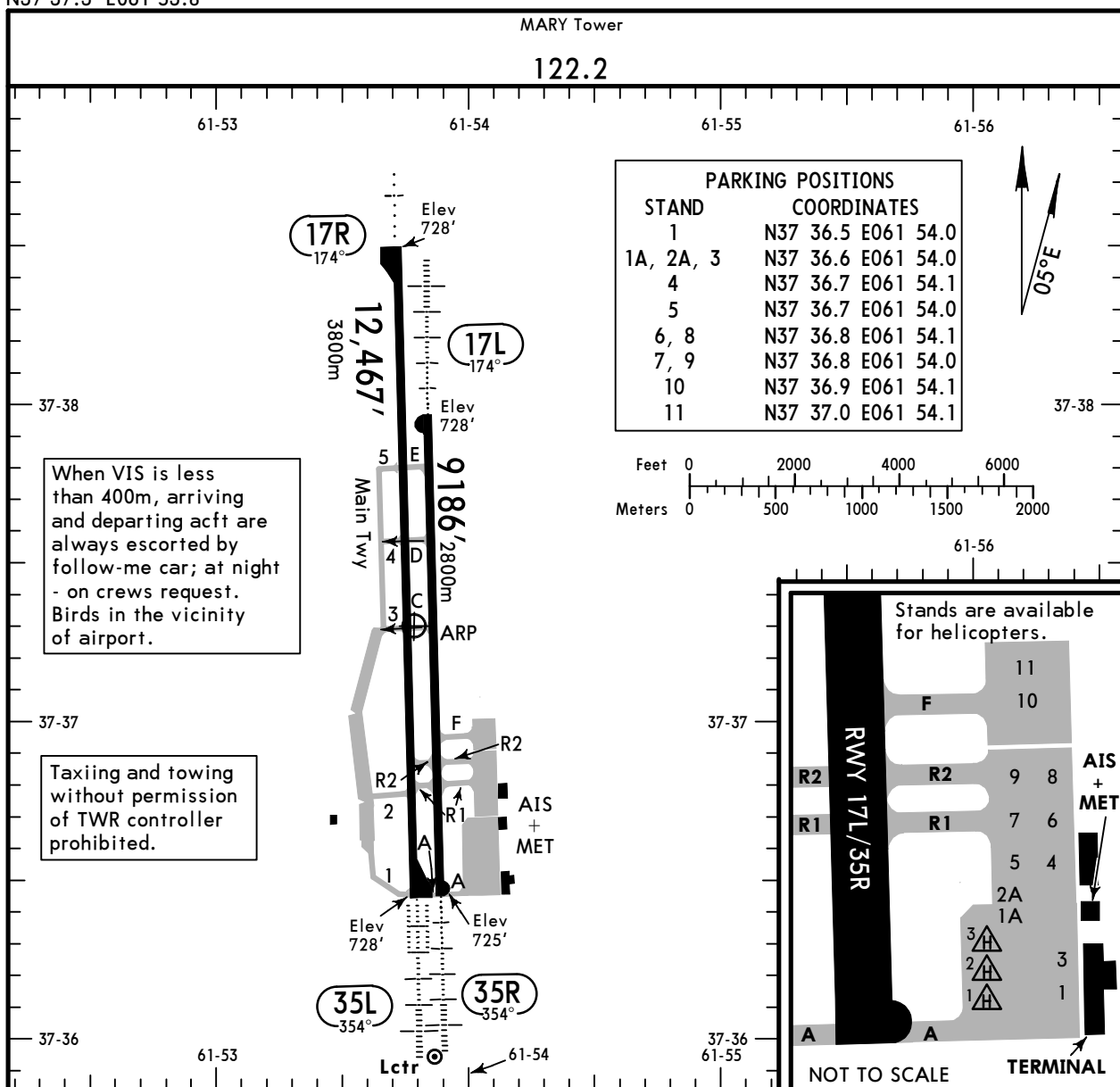
Apt Elev **728'**  
N37 37.3 E061 53.8



1 MAR 24 (10-9)

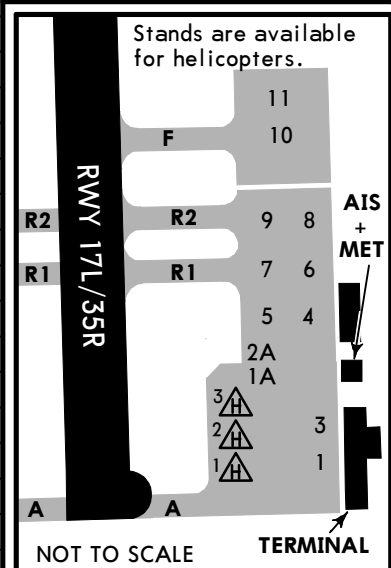
# MARY, TURKMENISTAN

MARY



When VIS is less than 400m, arriving and departing acft are always escorted by follow-me car; at night - on crews request. Birds in the vicinity of airport.

Taxiing and towing without permission of TWR controller prohibited.



ADDITIONAL RUNWAY INFORMATION

RWY	USABLE LENGTHS				TAKE-OFF	WIDTH
	LANDING BEYOND					
	Threshold	Glide Slope				
17L 35R	HIRL (60m)	HIALS	PAPI-L (angle 3.00°)	RVR	①	148' 45m

① TAKE-OFF RUN AVAILABLE  
 RWY 17L: From rwy head 9186' (2800m)  
 twy E int 8202' (2500m)

17R 35L	HIRL (60m)	CL (15m)	ALS	PAPI-L ②	RVR	11,373' 3466m	③	148' 45m
	HIRL (60m)	CL (15m)	HIALS	TDZ	PAPI-L ②			

② angle 3.00°  
 ③ TAKE-OFF RUN AVAILABLE  
 RWY 17R: From rwy head 12,467' (3800m)  
 twy E int 8202' (2500m)  
 RWY 35L: From rwy head 12,467' (3800m)  
 twy R1 int 10,400' (3170m)  
 twy R2 int 9974' (3040m)  
 twy C int 7316' (2230m)

State	TAKE-OFF	
	DAY	NIGHT
A	R300m	
B	R300m	
C	R300m	R400m
D	R300m	R400m

UTAM/MYP



EASA AIR OPS

MARY, TURKMENISTAN  
MARY

STRAIGHT-IN RWY		A	B	C	D
17L	① NDB	1450'(722') V2800m	1450'(722') V2800m	1450'(722') V3000m	1450'(722') V3000m
	ALS out	V3500m	V3500m	V3700m	V3700m
	NDB	1450'(722') R2900m	1450'(722') R2900m	1450'(722') R3100m	1450'(722') R3100m
	ALS out	R3600m	R3600m	R3800m	R3800m
17R	① NDB	1450'(722') V3100m	1450'(722') V3100m	1450'(722') V3300m	1450'(722') V3300m
	ALS out	V3500m	V3500m	V3700m	V3700m
	NDB	1450'(722') R3400m	1450'(722') R3400m	1450'(722') R3600m	1450'(722') R3600m
	ALS out	R3600m	R3600m	R3800m	R3800m
35L	ILS FULL	928'(200') V800m	928'(200') V800m	928'(200') V800m	928'(200') V800m
	ALS out	V1200m	V1200m	V1200m	V1200m
	① NDB	1130'(402') V1300m	1130'(402') V1300m	1130'(402') V1500m	1130'(402') V1500m
	ALS out	V2000m	V2000m	V2200m	V2200m
	NDB	1130'(402') R1400m	1130'(402') R1400m	1130'(402') R1600m	1130'(402') R1600m
	ALS out	R2100m	R2100m	R2300m	R2300m
35R	① NDB	1130'(405') V1300m	1130'(405') V1300m	1130'(405') V1500m	1130'(405') V1500m
	ALS out	V2000m	V2000m	V2200m	V2200m
	NDB	1130'(405') R1400m	1130'(405') R1400m	1130'(405') R1600m	1130'(405') R1600m
	ALS out	R2100m	R2100m	R2300m	R2300m

① Continuous Descent Final Approach.

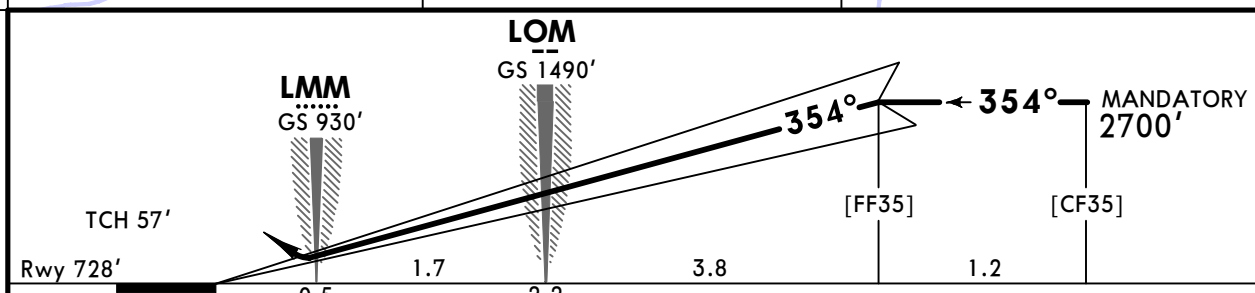
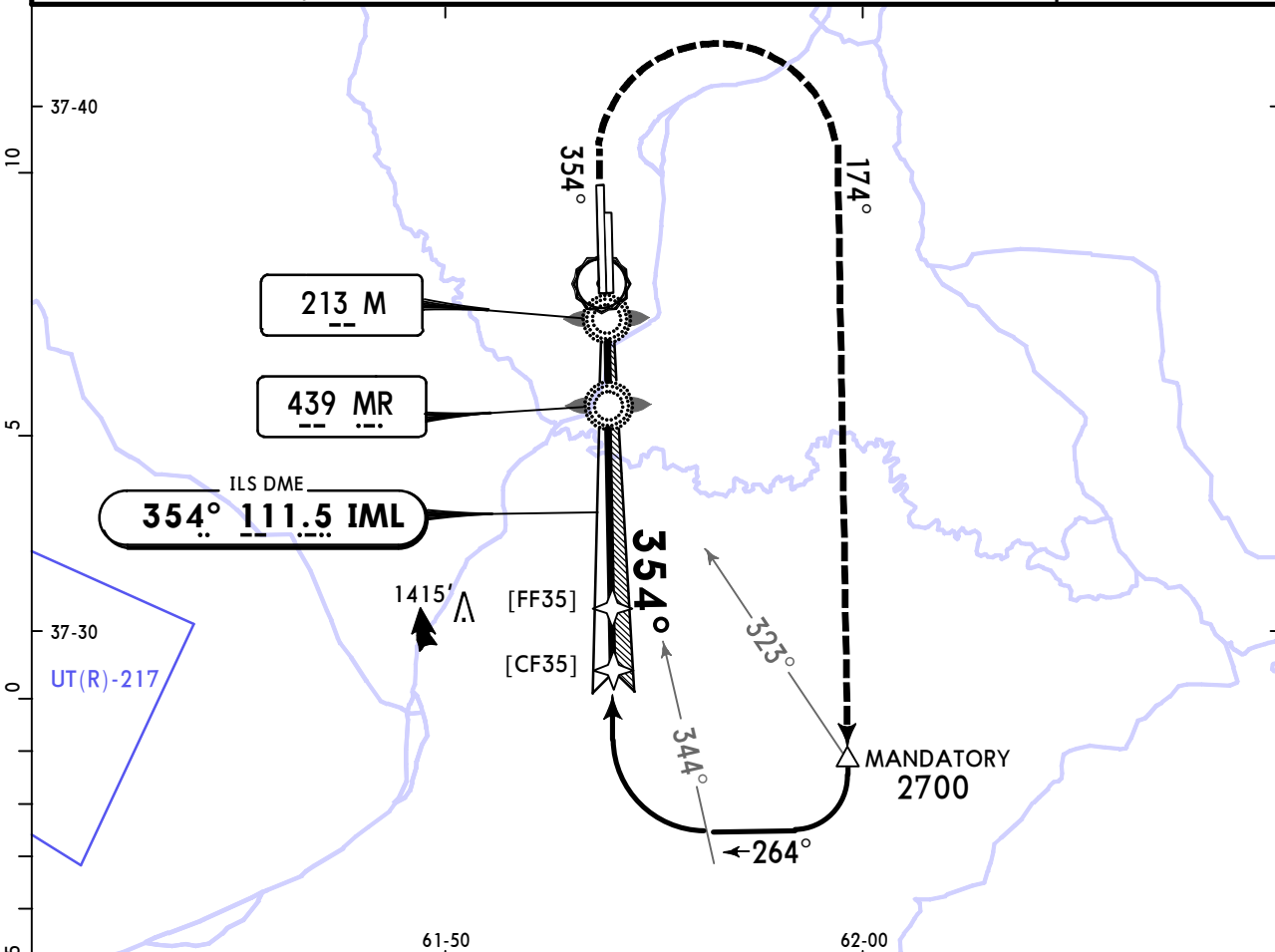
TAKE-OFF	
	DAY NIGHT
A	R300m
B	
C	R300m R400m
D	

# UTAM/MYP MARY

**JEPESEN**  
28 OCT 22 **11-1** Eff 3 Nov

# MARY, TURKMENISTAN ILS Rwy 35L

MARY Radar (TWR)				MARY Tower		
124.0				122.2		
LOC IML <b>111.5</b>	Final Apch Crs <b>354°</b>	[FF35] MANDATORY <b>2700'</b> (1972')	ILS DA(H) <b>928'</b> (200')	Apt Elev 728' Rwy 728'		2500
<b>MISSED APCH: Climb on 354° to 1400' or above, then turn RIGHT onto 174° climbing to 2700', then according to chart.</b>						
Alt Set: hPa		Rwy Elev: 26 hPa	Trans level: FL050		Trans alt: 4000'	
						MSA ARP



Gnd speed-Kts	70	90	100	120	140	160	HIALS PAPI	MIN 1400' on 354°
GS	3.00°	372	478	531	637	743		

<b>State</b>		STRAIGHT-IN LANDING	
		ILS	
		DA(H) <b>928'</b> (200')	
FULL		ALS out	
A			
B	V800m		V1200m
C			
D			

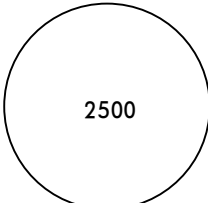
PANS OPS

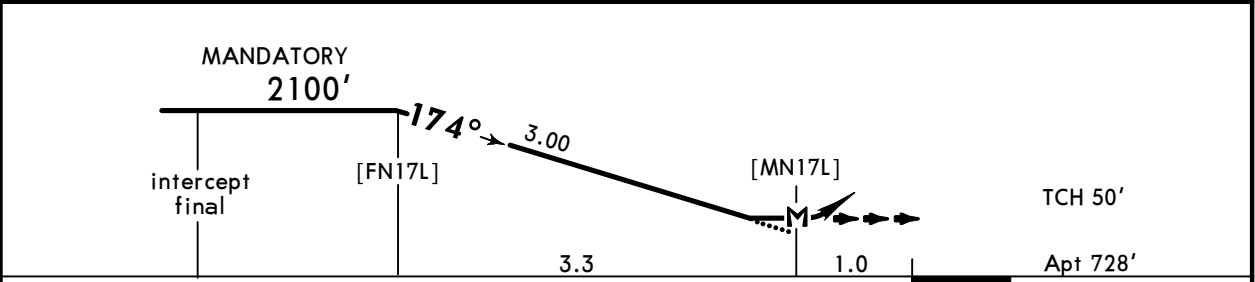
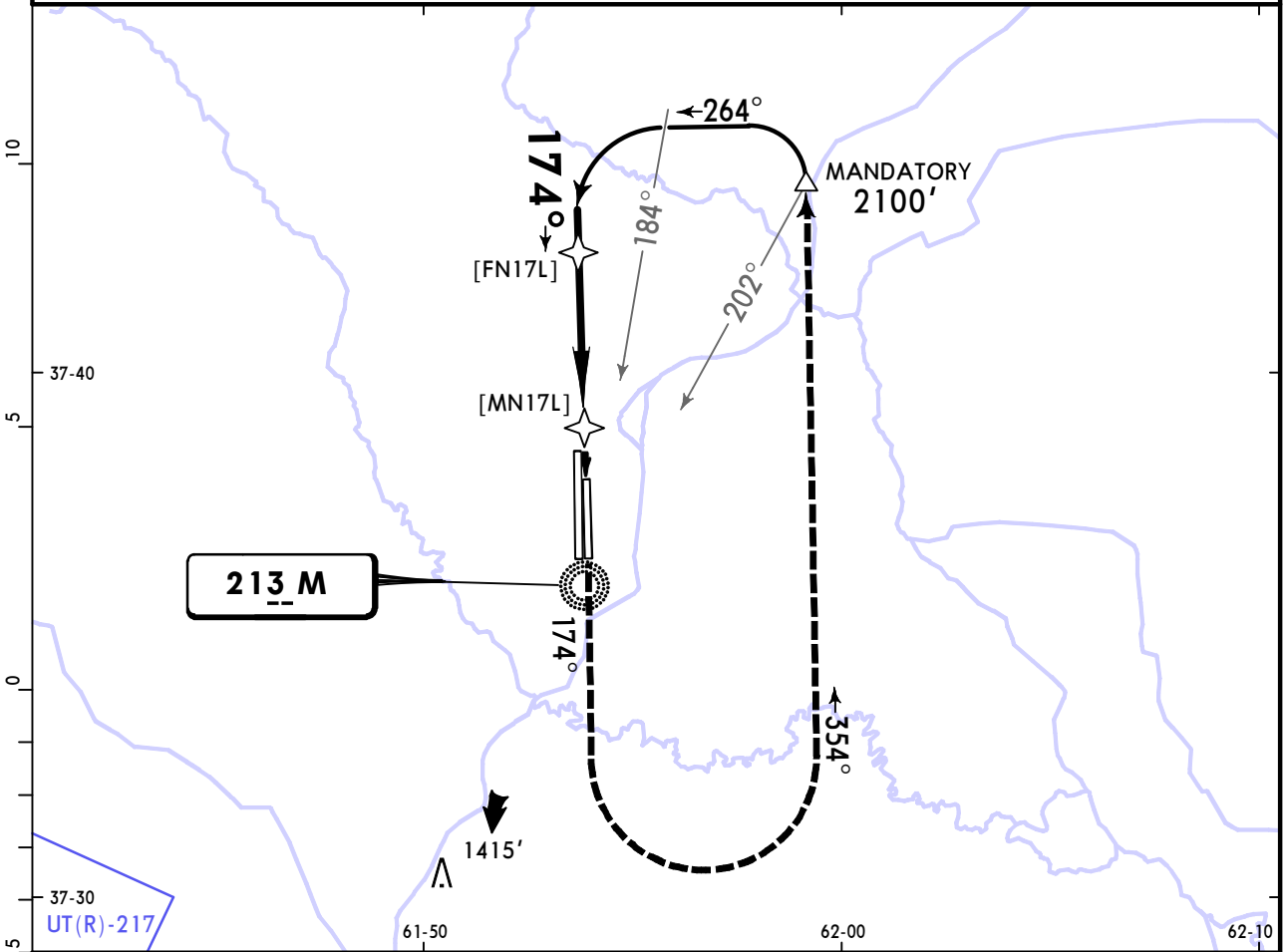
CHANGES: GS altitude at LMM.

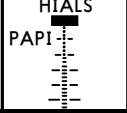
UTAM/MYP  
MARY

**JEPPESEN**  
17 NOV 23 (16-1) Eff 30 Nov

MARY, TURKMENISTAN  
NDB Rwy 17L

MARY Radar (TWR) <b>124.0</b>			MARY Tower <b>122.2</b>		 2500 MSA ARP		
Lctr M <b>213</b>	Final Apch Crs <b>174°</b>	[FN17L] MANDATORY <b>2100'</b> (1372')	MDA(H) <b>1450'</b> (722')	Apt Elev 728'			
<b>MISSED APCH: Climb on 174° to 2700', then turn LEFT onto 354° descending to 2100' to baseturn, then according to chart.</b>							
Alt Set: hPa		Apt Elev: 26 hPa		Trans level: FL050		Trans alt: 4000'	



Gnd speed-Kts	70	90	100	120	140	160		<b>2700'</b> ↑ on <b>174°</b>
Descent Angle 3.00°	372	478	531	637	743	849		
MAP at [MN17L]								

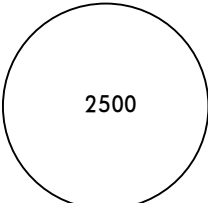
**State** STRAIGHT-IN LANDING  
MDA(H) **1450'** (722')

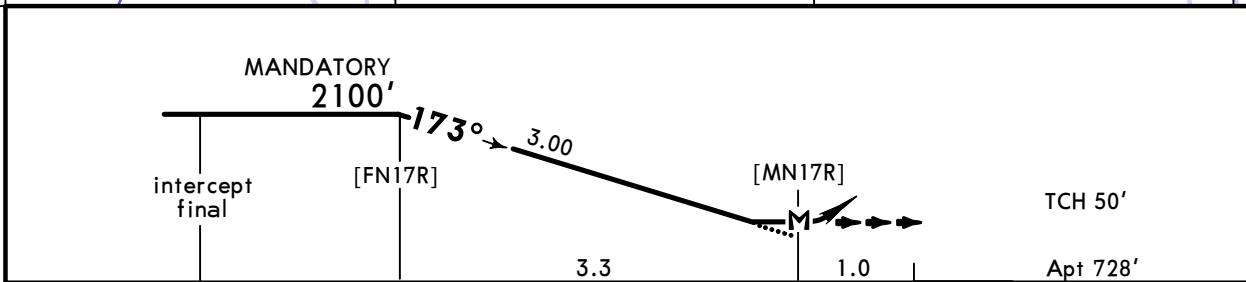
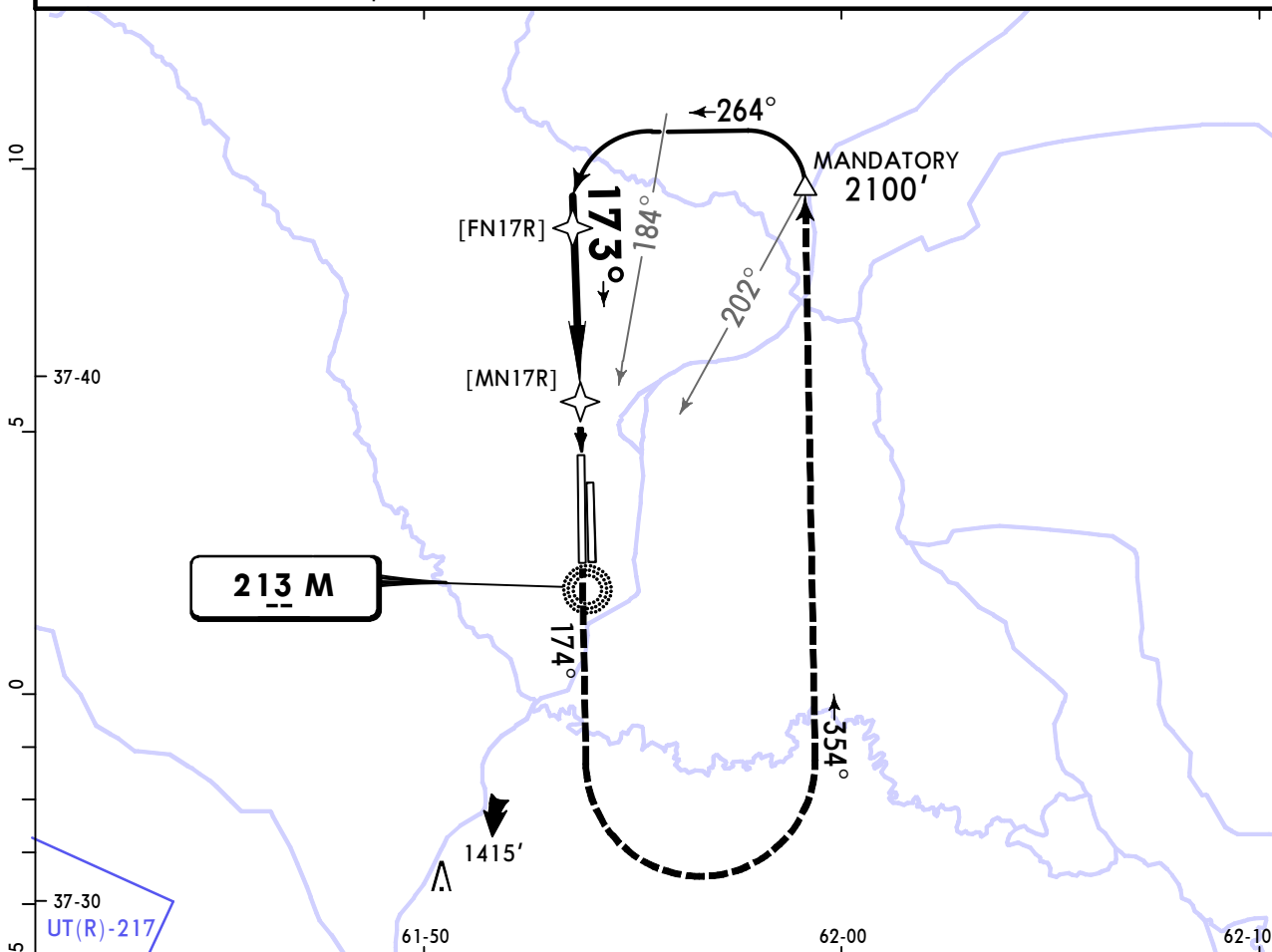
		ALS out
A	V2800m	V3500m
B		
C	V3000m	V3700m
D		


UTAM/MYP  
MARY

**JEPPESEN**  
17 NOV 23 (16-2) Eff 30 Nov

MARY, TURKMENISTAN  
NDB Rwy 17R

MARY Radar (TWR) <b>124.0</b>			MARY Tower <b>122.2</b>		 2500 MSA ARP	
Lctr M <b>213</b>	Final Apch Crs <b>173°</b>	[FN17R] MANDATORY <b>2100'</b> (1372')	MDA(H) <b>1450'</b> (722')	Apt Elev 728'		
<b>MISSED APCH: Climb on 174° to 2700', then turn LEFT onto 354° descending to 2100' to baseturn, then according to chart.</b>						
Alt Set: hPa		Apt Elev: 26 hPa		Trans level: FL050		Trans alt: 4000'



Gnd speed-Kts	70	90	100	120	140	160		<b>2700'</b> ↑ on <b>174°</b>
Descent Angle 3.00°	372	478	531	637	743	849		
MAP at [MN17R]								

**State** STRAIGHT-IN LANDING

MDA(H) **1450'** (722')

		ALS out
A	V3100m	V3500m
B	V3100m	V3500m
C	V3300m	V3700m
D	V3300m	V3700m

PANS OPS

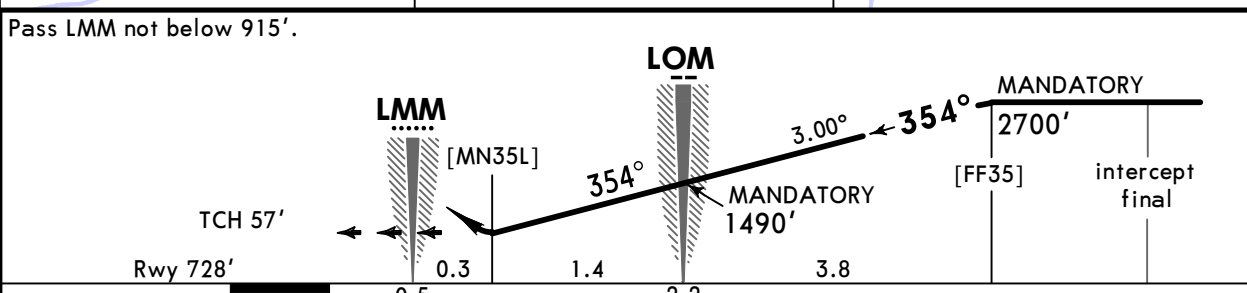
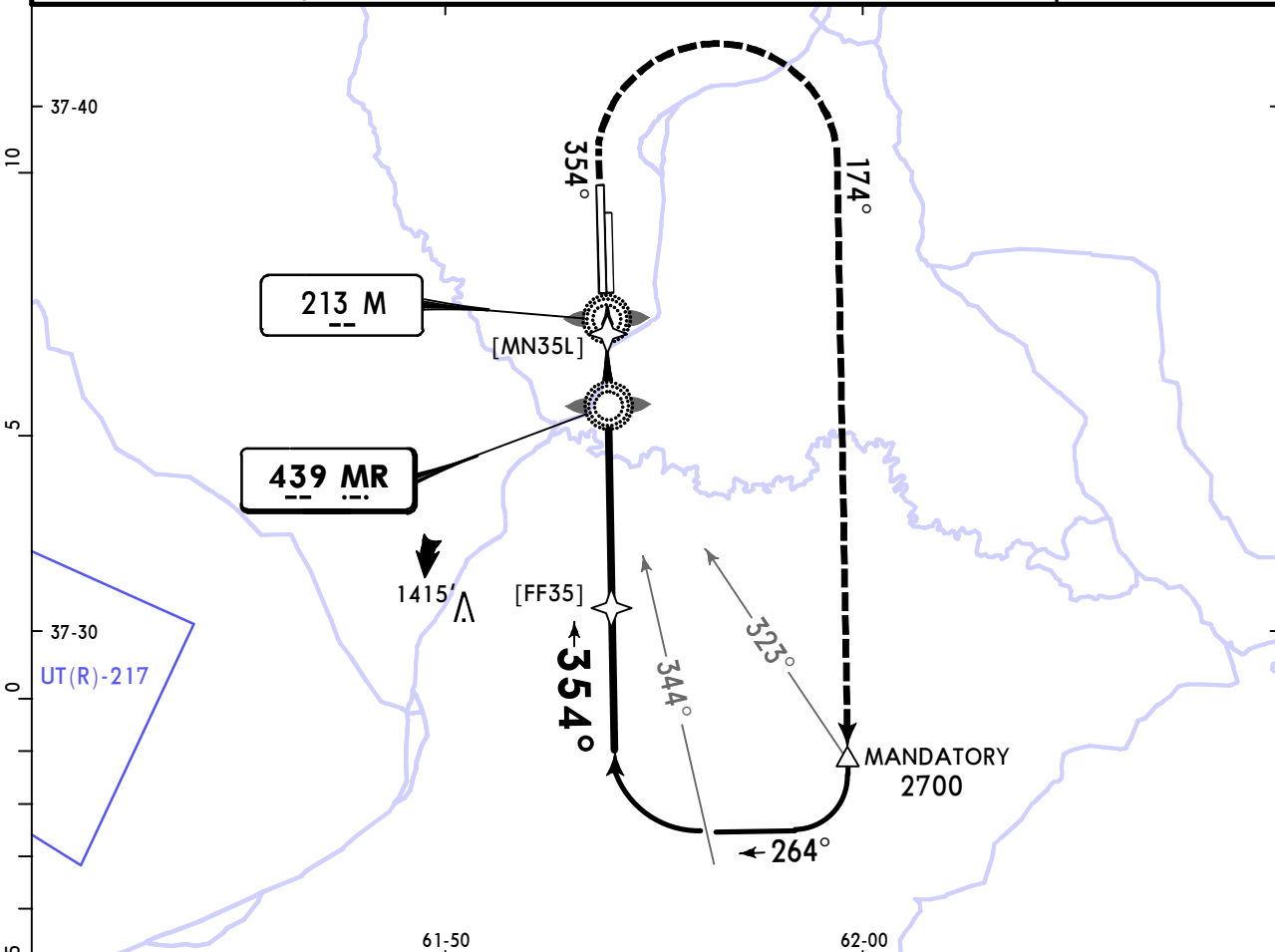
CHANGES: Missed approach.

**UTAM/MYP**  
MARY

**JEPPESSEN**  
28 OCT 22 (16-3) Eff 3 Nov

**MARY, TURKMENISTAN**  
2 NDB Rwy 35L

MARY Radar (TWR)				MARY Tower		
124.0				122.2		
NDB MR <b>439</b>	Final Apch Crs <b>354°</b>	No FAF	MDA(H) <b>1130' (402')</b>	Apt Elev 728' Rwy 728'		2500
<b>MISSED APCH: Climb on 354° to 1400' or above, then turn RIGHT onto 174° climbing to 2700', then according to chart.</b>						
Alt Set: hPa		Rwy Elev: 26 hPa	Trans level: FL050		Trans alt: 4000'	
						MSA ARP



Gnd speed-Kts	70	90	100	120	140	160	HIALS PAPI	MIN <b>1400'</b> on <b>354°</b>
Descent Angle 3.00°	372	478	531	637	743	849		

<b>State</b>		STRAIGHT-IN LANDING	
MDA(H) <b>1130' (402')</b>			
		ALS out	
A	V1300m		V2000m
B	V1500m		V2200m
C			
D			

PANS OPS

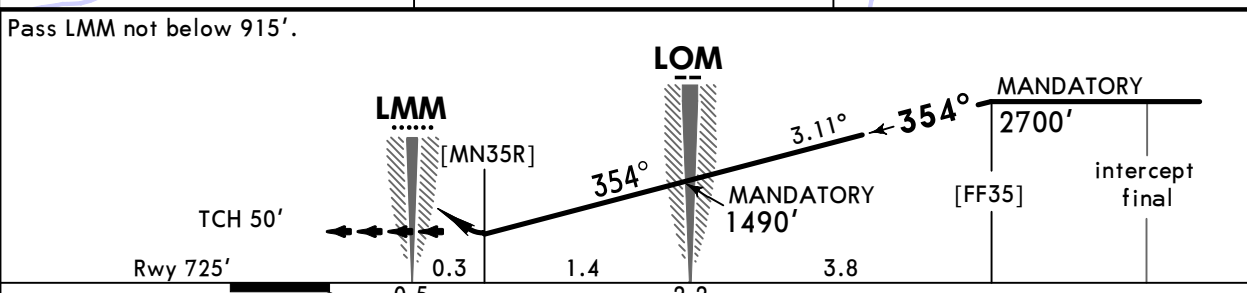
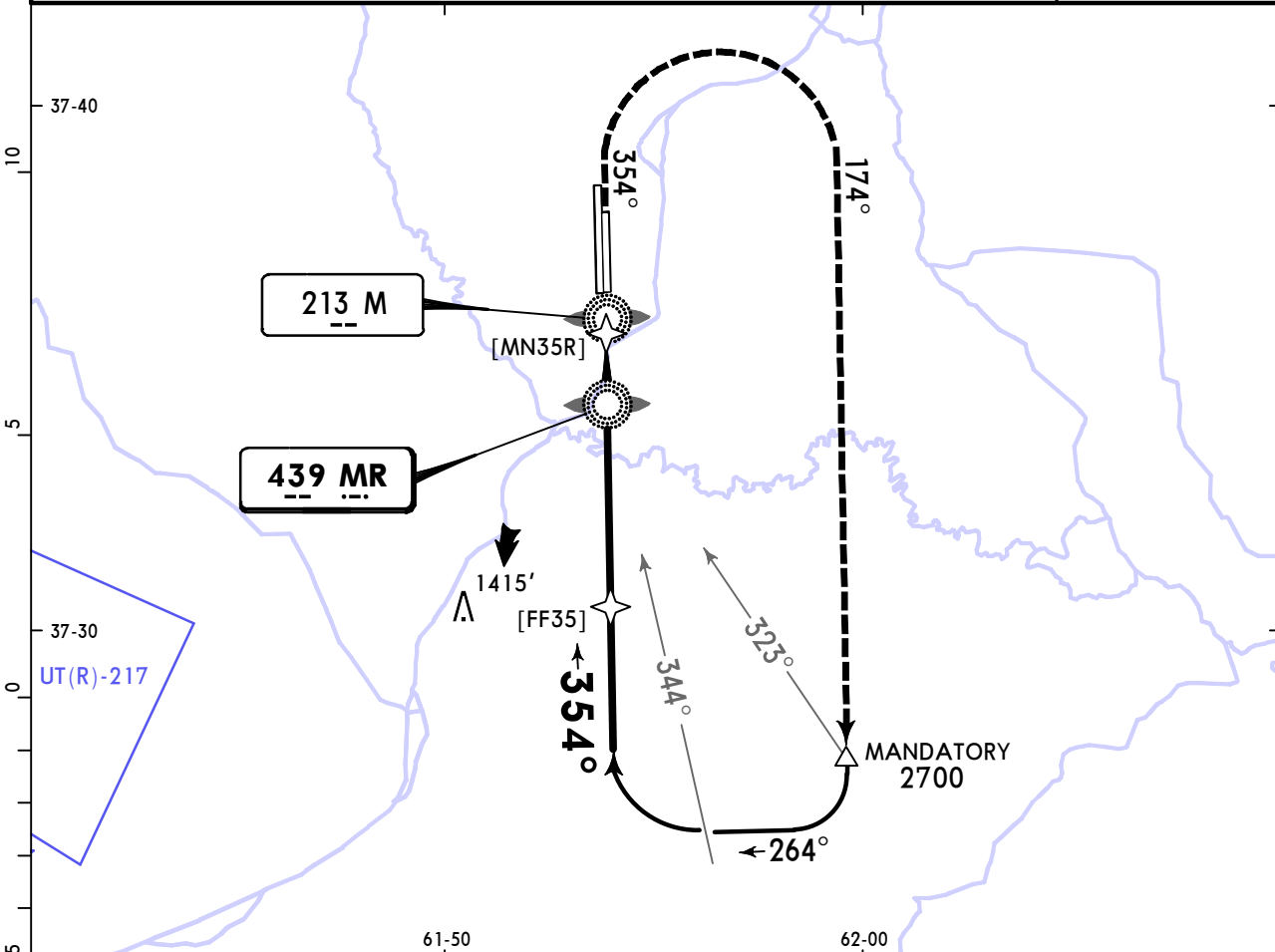
# UTAM/MYP MARY

**JEPPESEN**  
28 OCT 22 (16-4) Eff 3 Nov

# MARY, TURKMENISTAN

## 2 NDB Rwy 35R

MARY Radar (TWR)				MARY Tower		
124.0				122.2		
NDB MR <b>439</b>	Final Apch Crs <b>354°</b>	No FAF	MDA(H) <b>1130' (405')</b>	Apt Elev 728' Rwy 725'		2500
<b>MISSED APCH: Climb on 354° to 1400' or above, then turn RIGHT onto 174° climbing to 2700', then according to chart.</b>						
Alt Set: hPa		Rwy Elev: 26 hPa	Trans level: FL050		Trans alt: 4000'	
						MSA ARP



Gnd speed-Kts	70	90	100	120	140	160	HIALS PAPI	MIN <b>1400'</b> on <b>354°</b>
Descent Angle	3.11°	372	478	531	637	743		

**State** STRAIGHT-IN LANDING

MDA(H) **1130' (405')**

	ALS out	
A	V1300m	V2000m
B	V1500m	V2200m
C		
D		

PANS OPS

## Chart changes since cycle 04-2025

ADD = added chart, REV = revised chart, DEL = deleted chart.

ACT	PROCEDURE IDENT	INDEX	REV DATE	EFF DATE
-----	-----------------	-------	----------	----------

**MARY, (MARY - UTAM)**

## TERMINAL CHART CHANGE NOTICES

No Chart Change Notices for Airport UTAM