

List of pages in this Trip Kit

Trip Kit Index

Airport Information For UTAT

Terminal Charts For UTAT

Revision Letter For Cycle 05-2025

Change Notices

Notebook

General Information

Location: DASHOGUZ TKM
ICAO/IATA: UTAT / TAZ
Lat/Long: N41° 45.59', E059° 50.06'
Elevation: 282 ft

Airport Use: Public
Daylight Savings: Not Observed
UTC Conversion: -5:00 = UTC
Magnetic Variation: 7.0° E

Fuel Types: Jet A-1
Repair Types: Minor Airframe, Minor Engine
Customs: Yes
Airport Type: IFR
Landing Fee: Yes
Control Tower: Yes
Jet Start Unit: No
LLWS Alert: No
Beacon: No

Sunrise: 0030 Z
Sunset: 1526 Z

Runway Information

Runway: 08
Length x Width: 12467 ft x 197 ft
Surface Type: concrete
TDZ-Elev: 278 ft
Lighting: Edge, ALS, Centerline, TDZ

Runway: 26
Length x Width: 12467 ft x 197 ft
Surface Type: concrete
TDZ-Elev: 278 ft
Lighting: Edge, ALS, Centerline, TDZ

Communication Information

ATIS: 112.000
Dashoguz Tower: 122.700
Dashoguz Approach: 124.700
Dashoguz Approach: 129.000 Secondary
Dashoguz Transit Operations: 131.700 Non-English

UTAT/TAZ DASHOGUZ

JEPPESEN DASHOGUZ, TURKMENISTAN

22 MAY 20 10-2

STAR

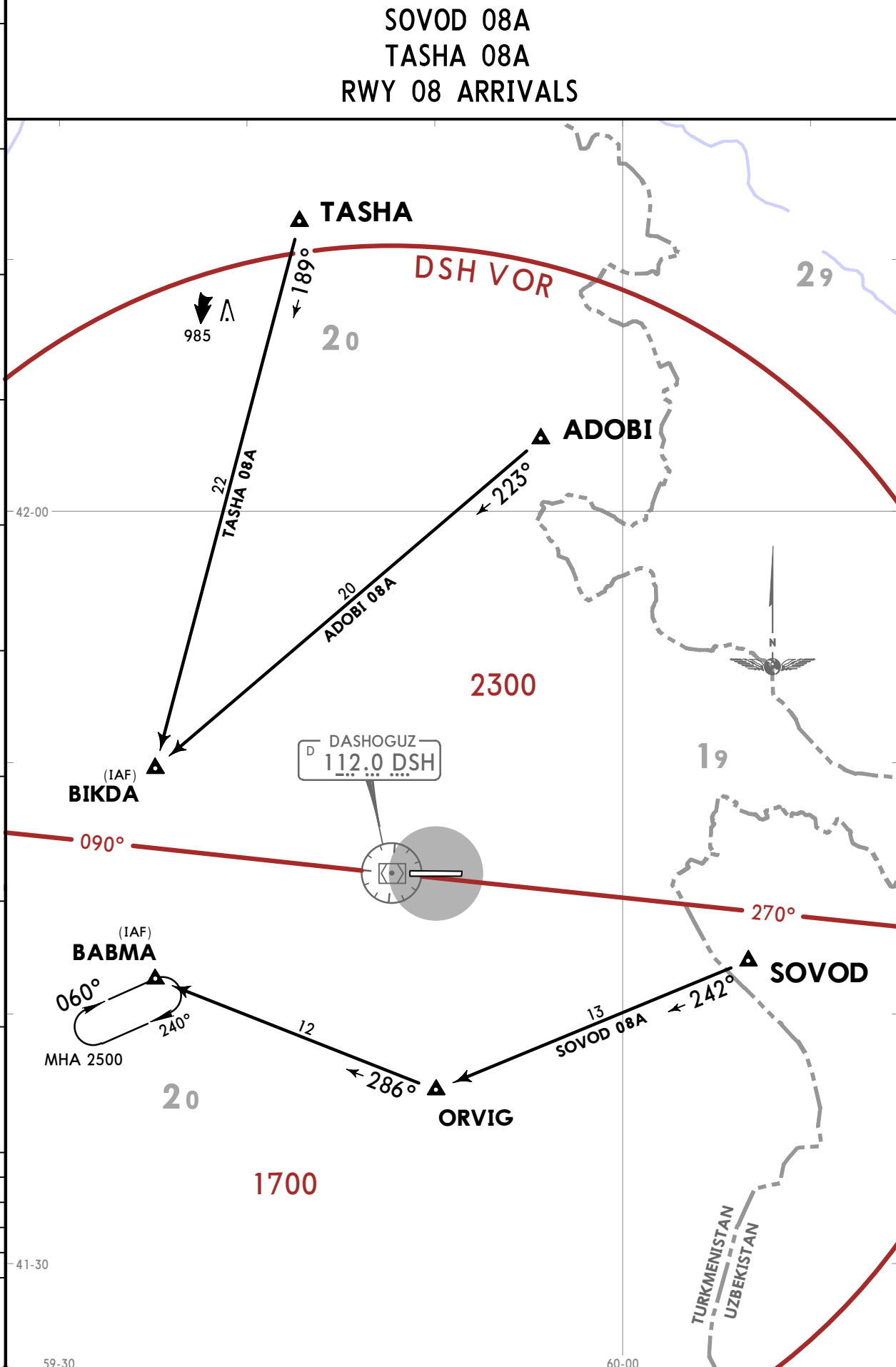
ATIS
112.0

Apt Elev
282

Alt Set: hPa Trans level: FL120

ADOBI 08A
SOVOD 08A
TASHA 08A
RWY 08 ARRIVALS

45
40
35
30
25
20
15
10
5
0
5



CHANGES: ATIS established.

© JEPPESEN, 2018, 2020. ALL RIGHTS RESERVED.

UTAT/TAZ DASHOGUZ

JEPPESEN DASHOGUZ, TURKMENISTAN

22 MAY 20 (10-2A)

STAR

ATIS
112.0

Apt Elev
282

Alt Set: hPa Trans level: FL120

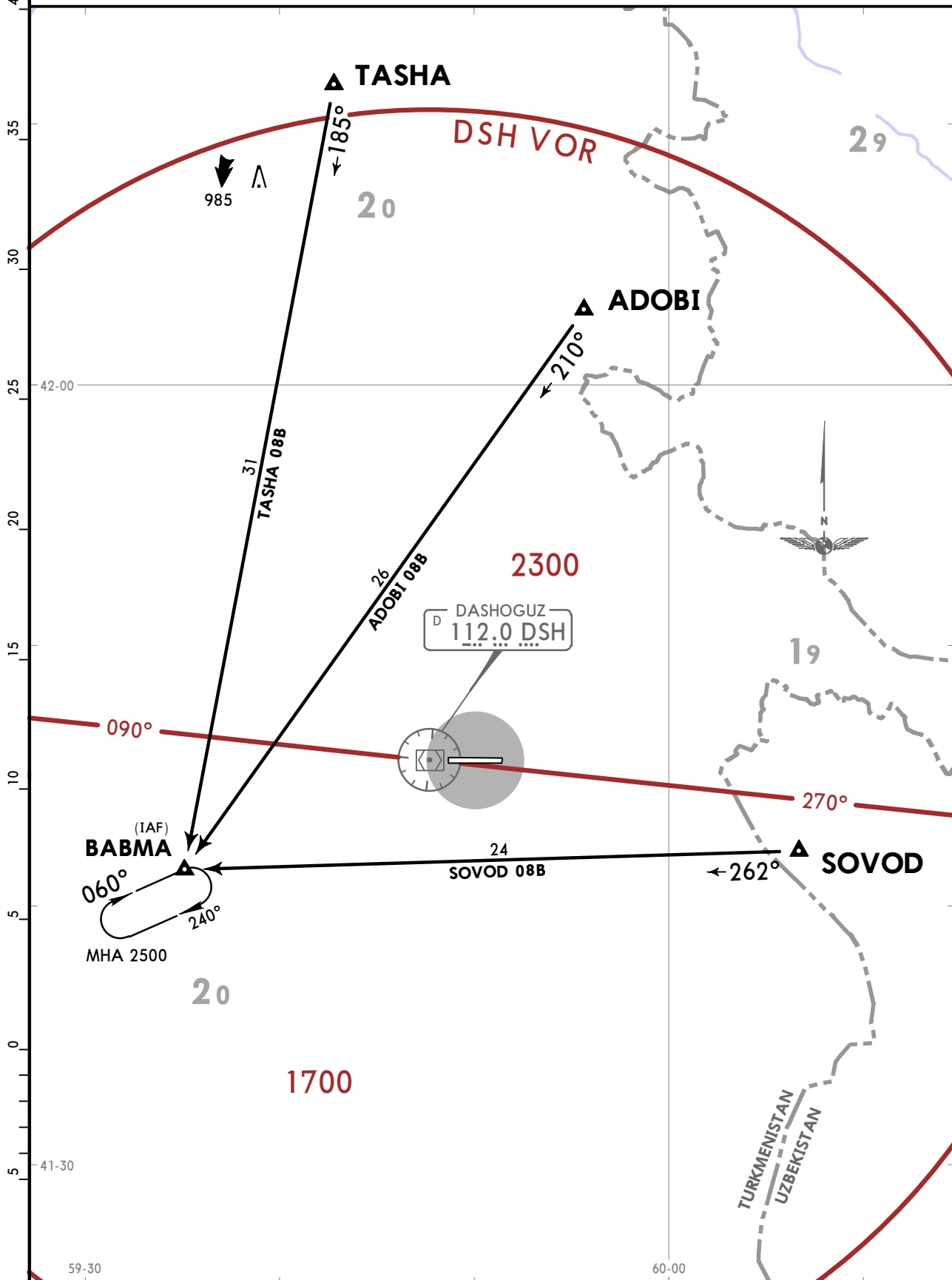
ADOBI 08B

SOVOD 08B

TASHA 08B

RWY 08 ARRIVALS

WITHOUT RADAR CONTROL AND RADIO COMMUNICATION FAILURE



CHANGES: ATIS established.

© JEPPESEN, 2018, 2020. ALL RIGHTS RESERVED.

UTAT/TAZ DASHOGUZ

JEPPESEN DASHOGUZ, TURKMENISTAN

22 MAY 20 (10-2B)

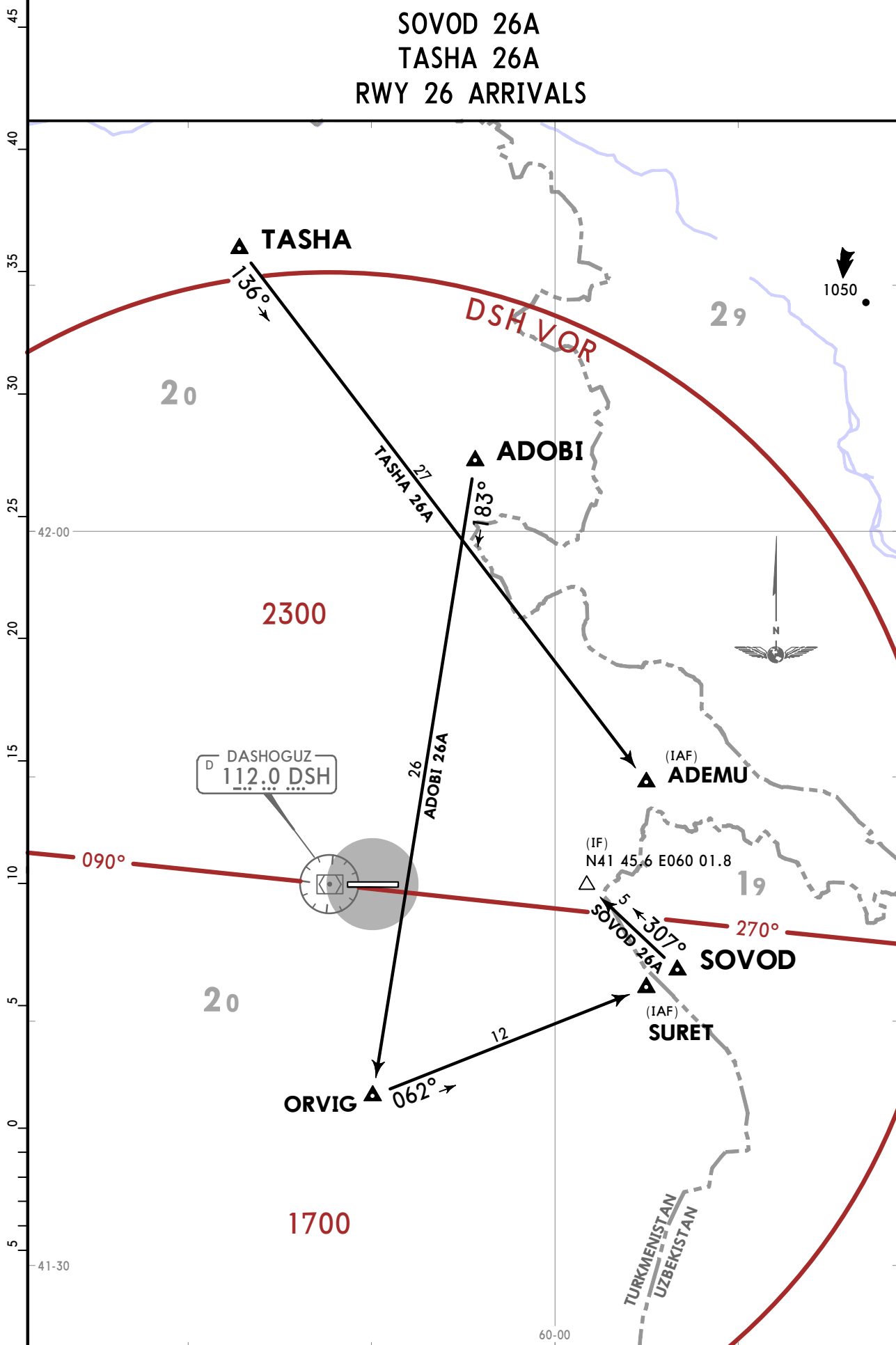
STAR

ATIS
112.0

Apt Elev
282

Alt Set: hPa Trans level: FL120

ADOBI 26A
SOVOD 26A
TASHA 26A
RWY 26 ARRIVALS



CHANGES: ATIS established.

© JEPPESEN, 2018, 2020. ALL RIGHTS RESERVED.

UTAT/TAZ DASHOGUZ

JEPPESEN DASHOGUZ, TURKMENISTAN

22 MAY 20 (10-2C)

STAR

ATIS
112.0

Apt Elev
282

Alt Set: hPa Trans level: FL120

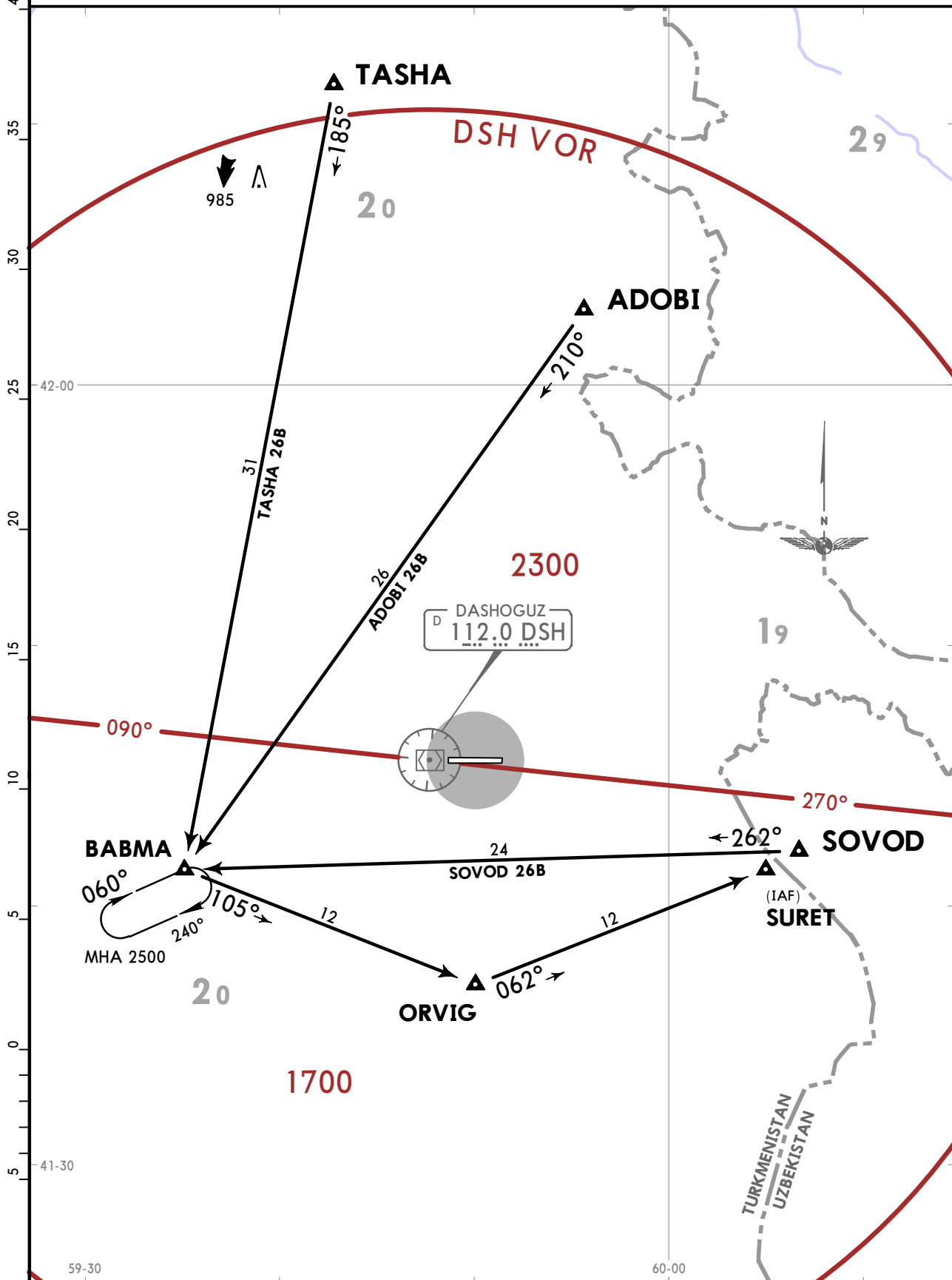
ADOBI 26B

SOVOD 26B

TASHA 26B

RWY 26 ARRIVALS

WITHOUT RADAR CONTROL AND RADIO COMMUNICATION FAILURE



CHANGES: ATIS established.

© JEPPESEN, 2018, 2020. ALL RIGHTS RESERVED.

UTAT/TAZ DASHOGUZ

JEPPESEN DASHOGUZ, TURKMENISTAN

22 MAY 20 (10-2D)

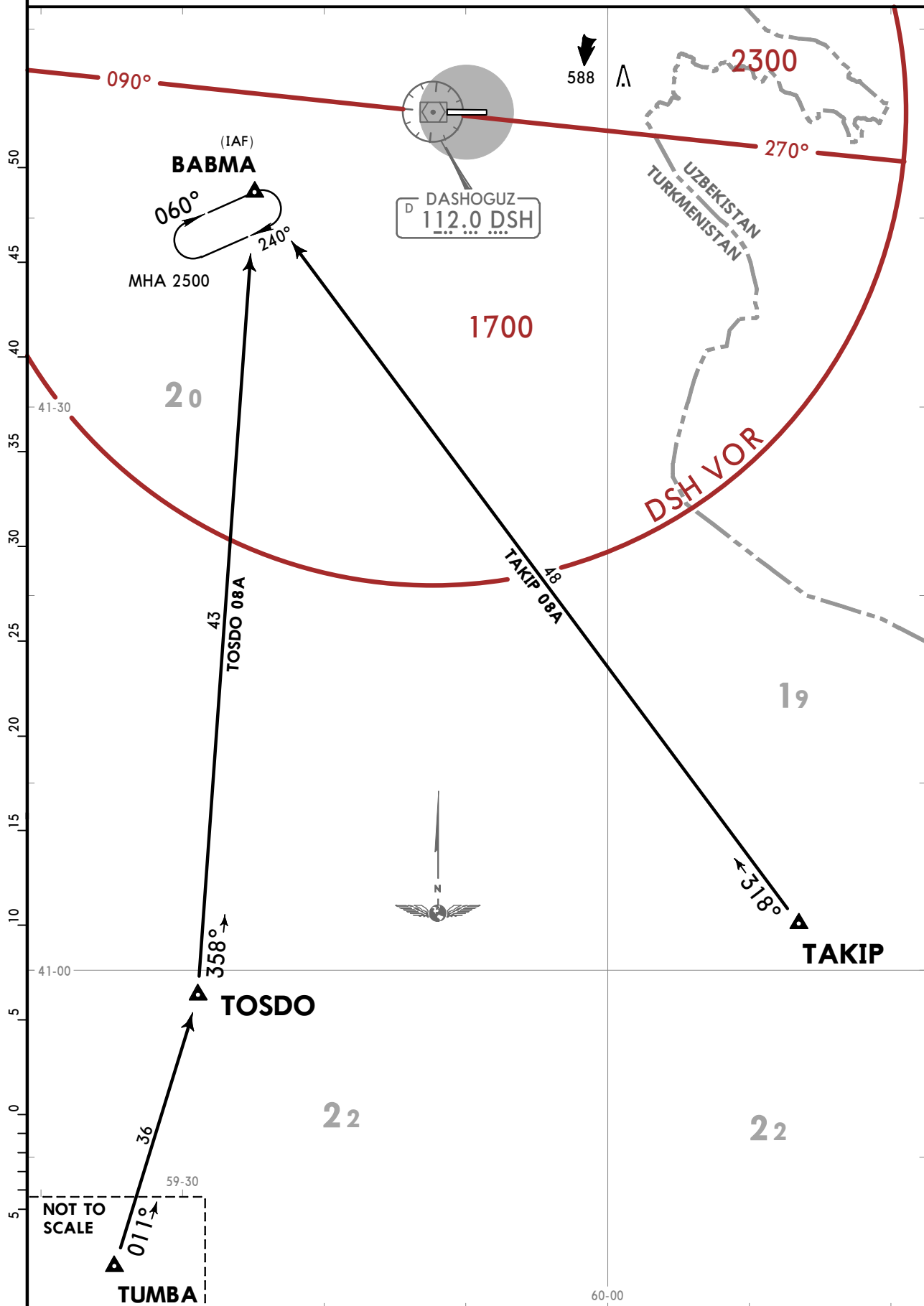
STAR

ATIS
112.0

Apt Elev
282

Alt Set: hPa Trans level: FL120

TAKIP 08A TOSDO 08A RWY 08 ARRIVALS



CHANGES: ATIS established.

UTAT/TAZ
DASHOGUZ

JEPPESEN DASHOGUZ, TURKMENISTAN

22 MAY 20 **10-2E**

STAR

ATIS
112.0

Apt Elev
282

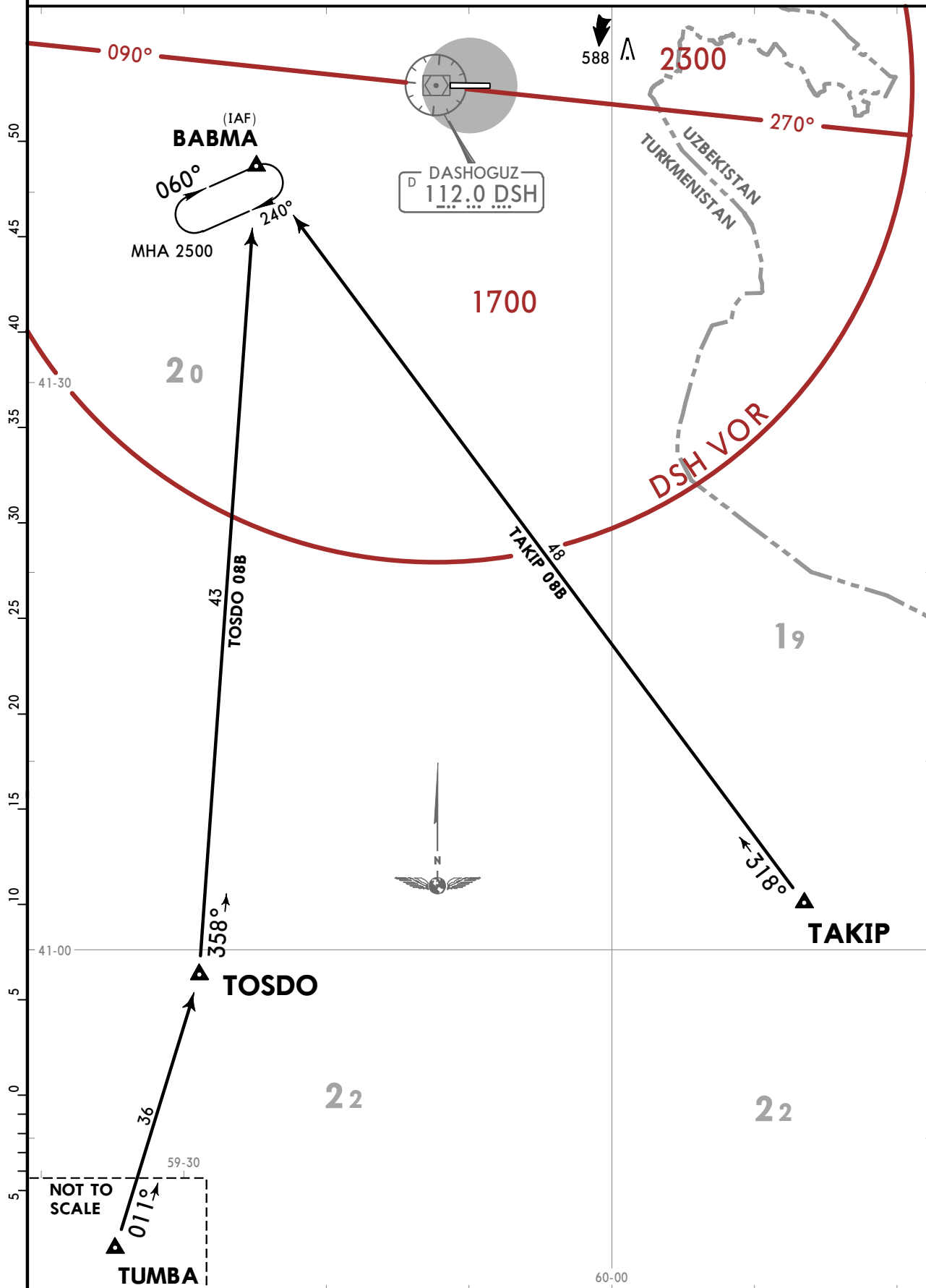
Alt Set: hPa Trans level: FL120

TAKIP 08B

TOSDO 08B

RWY 08 ARRIVALS

WITHOUT RADAR CONTROL AND RADIO COMMUNICATION FAILURE



CHANGES: ATIS established.

© JEPPESEN, 2018, 2020. ALL RIGHTS RESERVED.

UTAT/TAZ
DASHOGUZ

JEPPESSEN DASHOGUZ, TURKMENISTAN

22 MAY 20 10-2F

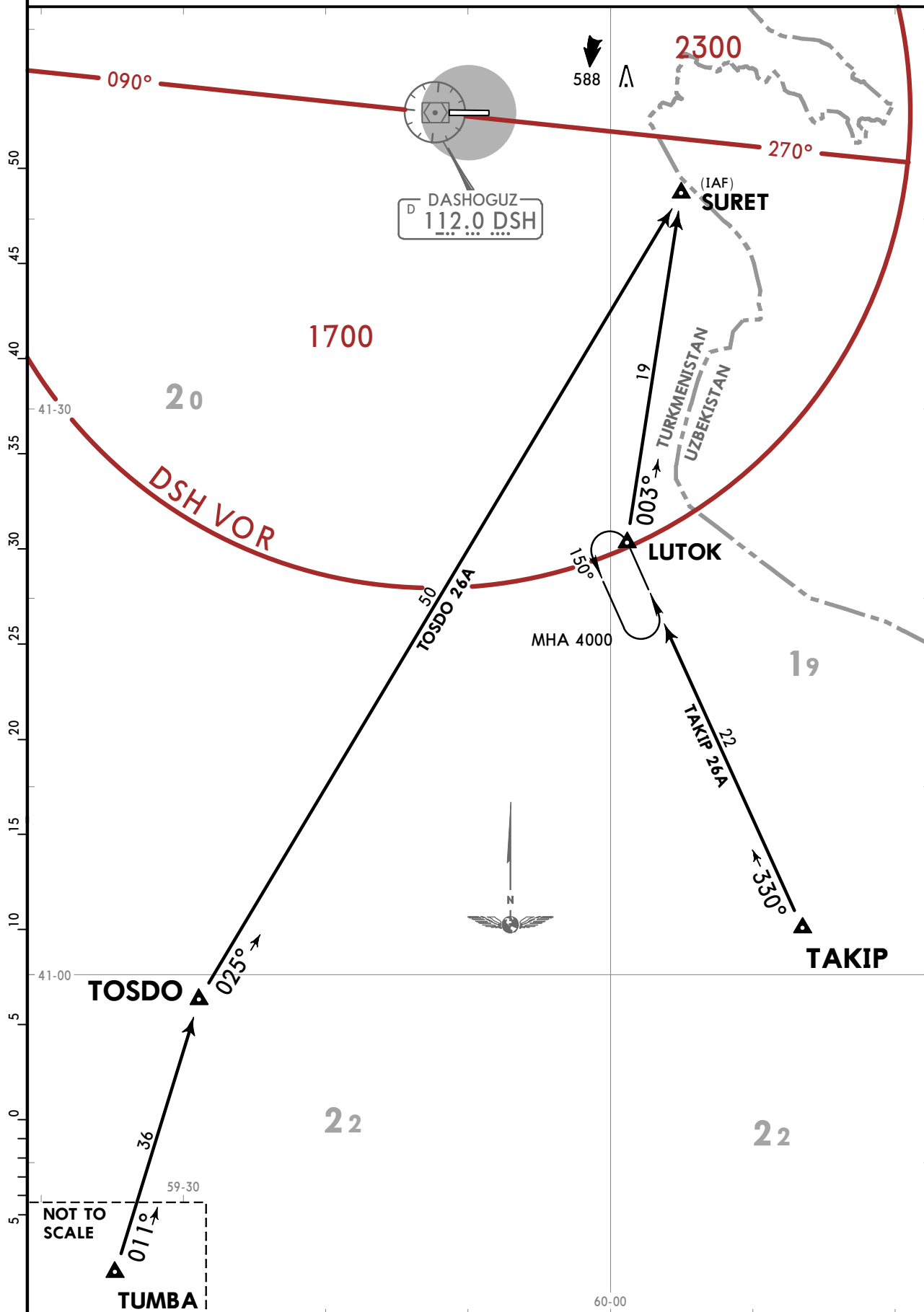
STAR

ATIS
112.0

Apt Elev
282

Alt Set: hPa Trans level: FL120

TAKIP 26A
TOSDO 26A
RWY 26 ARRIVALS



CHANGES: ATIS established.

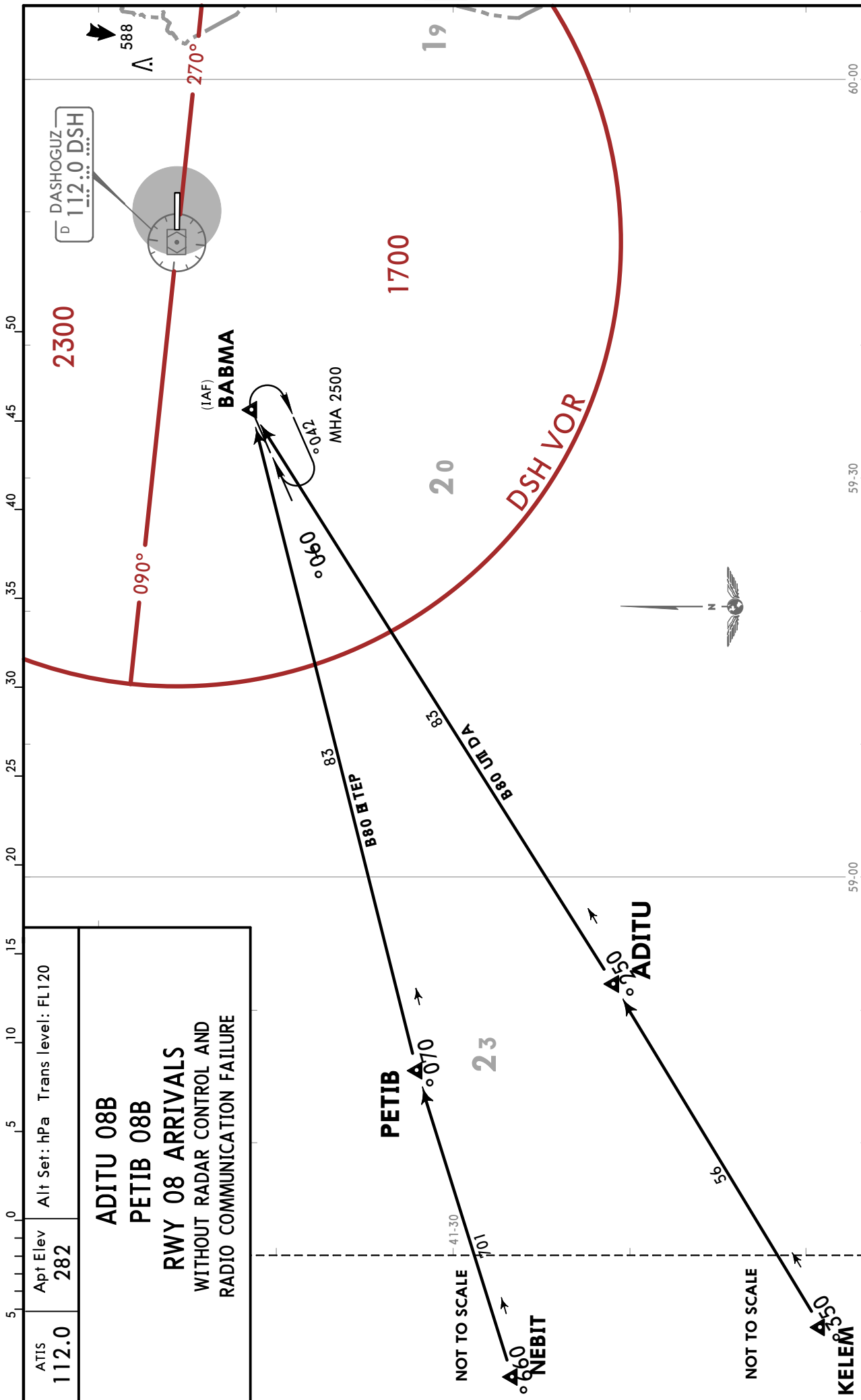
© JEPPESSEN, 2018, 2020. ALL RIGHTS RESERVED.

UTAT/TAZ DASHOGUZ

JEPPESSEN DASHOGUZ, TURKMENISTAN

22 MAY 20 (10-2J)

STAR



CHANGES: ATIS established.

© JEPPESEN, 2018, 2020. ALL RIGHTS RESERVED.

UTAT/TAZ DASHOGUZ

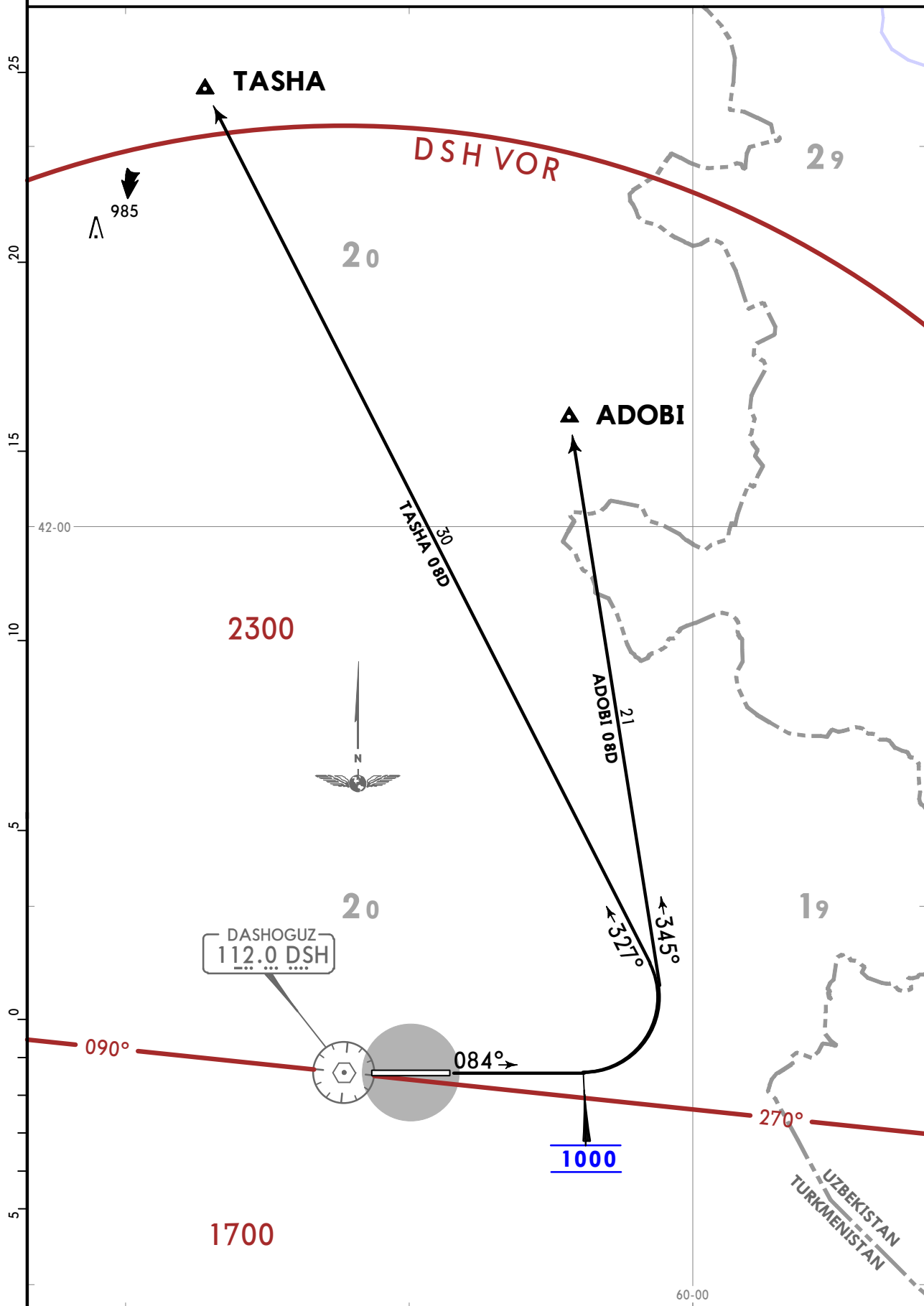
JEPPESEN DASHOGUZ, TURKMENISTAN

5 OCT 18 10-3 Eff 11 Oct

SID

Apt Elev 282
Trans alt: 12000

ADOBI 08D
TASHA 08D
RWY 08 DEPARTURES



UTAT/TAZ DASHOGUZ

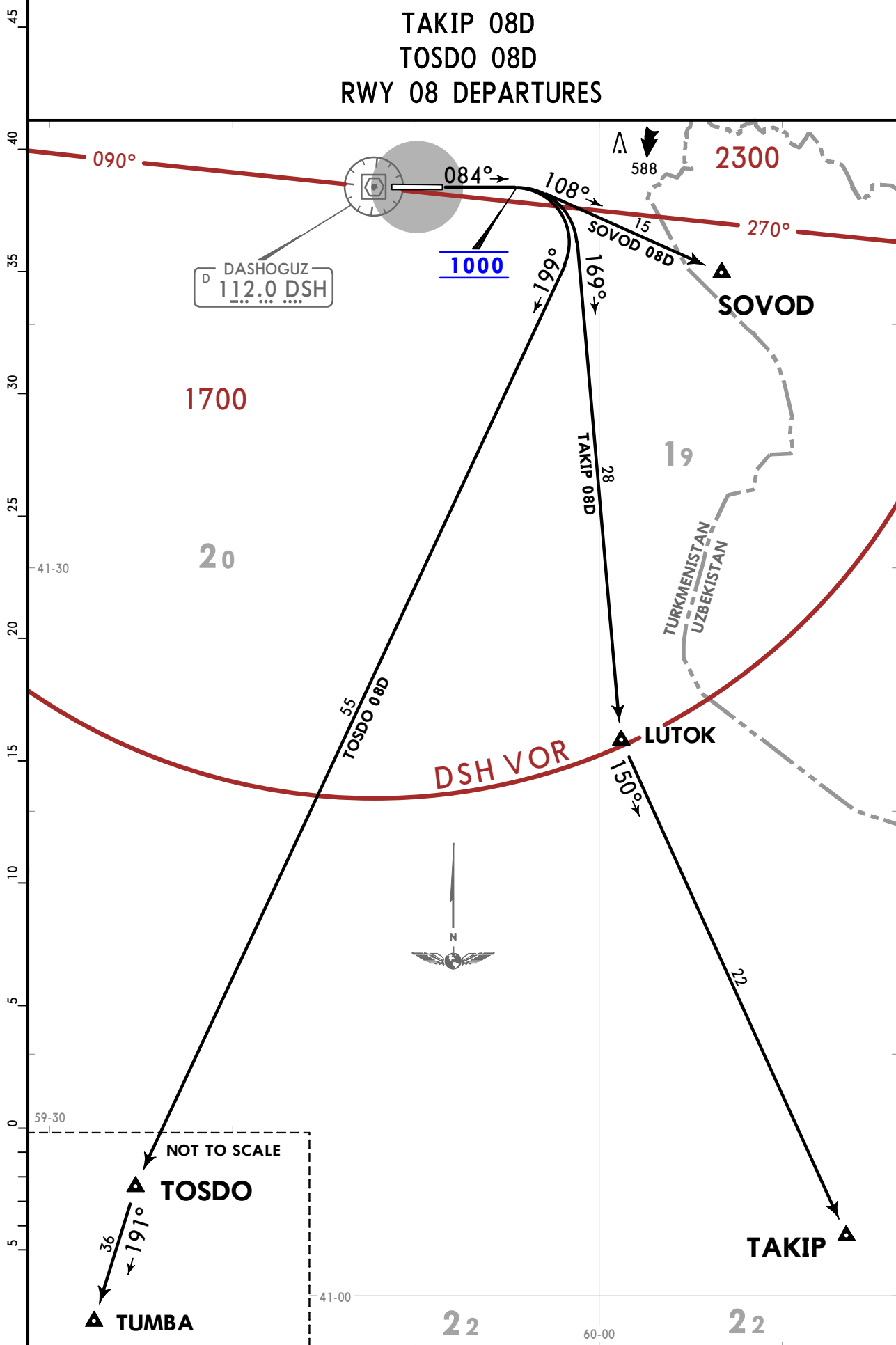
JEPPESEN DASHOGUZ, TURKMENISTAN

5 OCT 18 (10-3B) Eff 11 Oct

SID

Apt Elev 282
Trans alt: 12000

SOVOD 08D
TAKIP 08D
TOSDO 08D
RWY 08 DEPARTURES



UTAT/TAZ DASHOGUZ

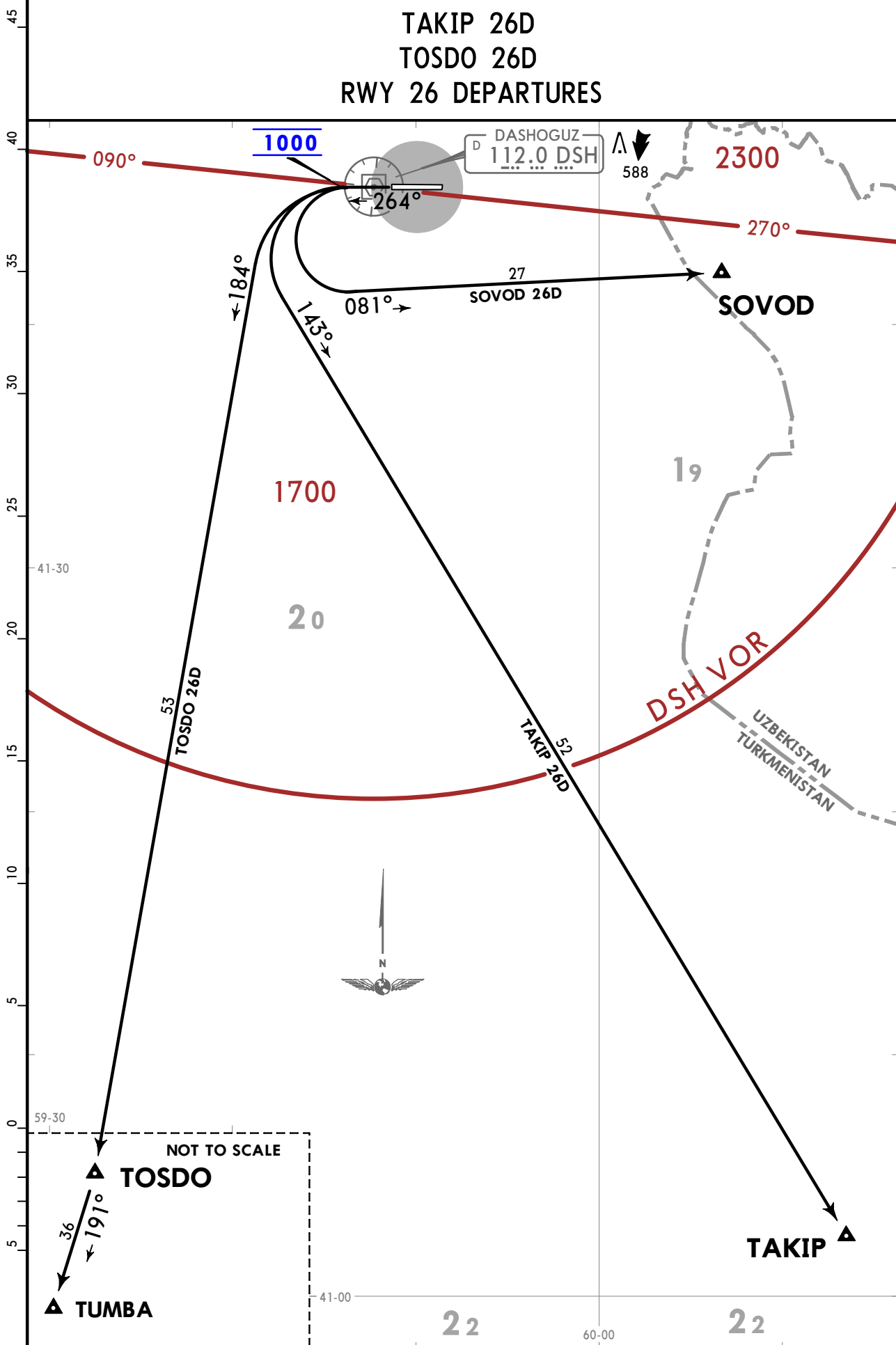
JEPPESEN DASHOGUZ, TURKMENISTAN

5 OCT 18 (10-3C) Eff 11 Oct

SID

Apt Elev 282
Trans alt: 12000

SOVOD 26D TAKIP 26D TOSDO 26D RWY 26 DEPARTURES

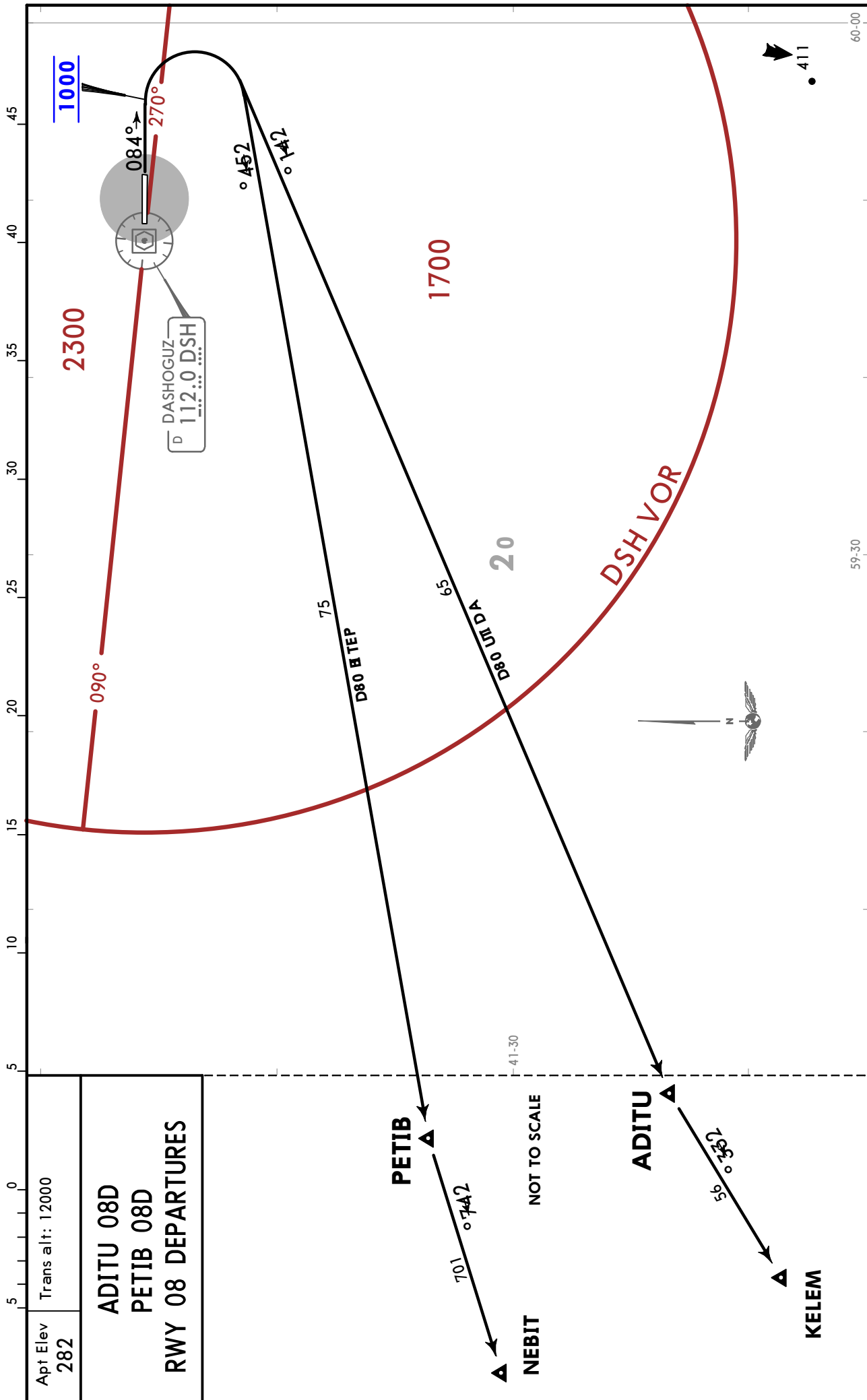


UTAT/TAZ DASHOGUZ

JEPPESSEN DASHOGUZ, TURKMENISTAN

5 OCT 18 10-3D Eff 11 Oct

SID



Apt Elev 282	Trans alt: 12000
ADITU 08D PETIB 08D RWY 08 DEPARTURES	

CHANGES: New chart.

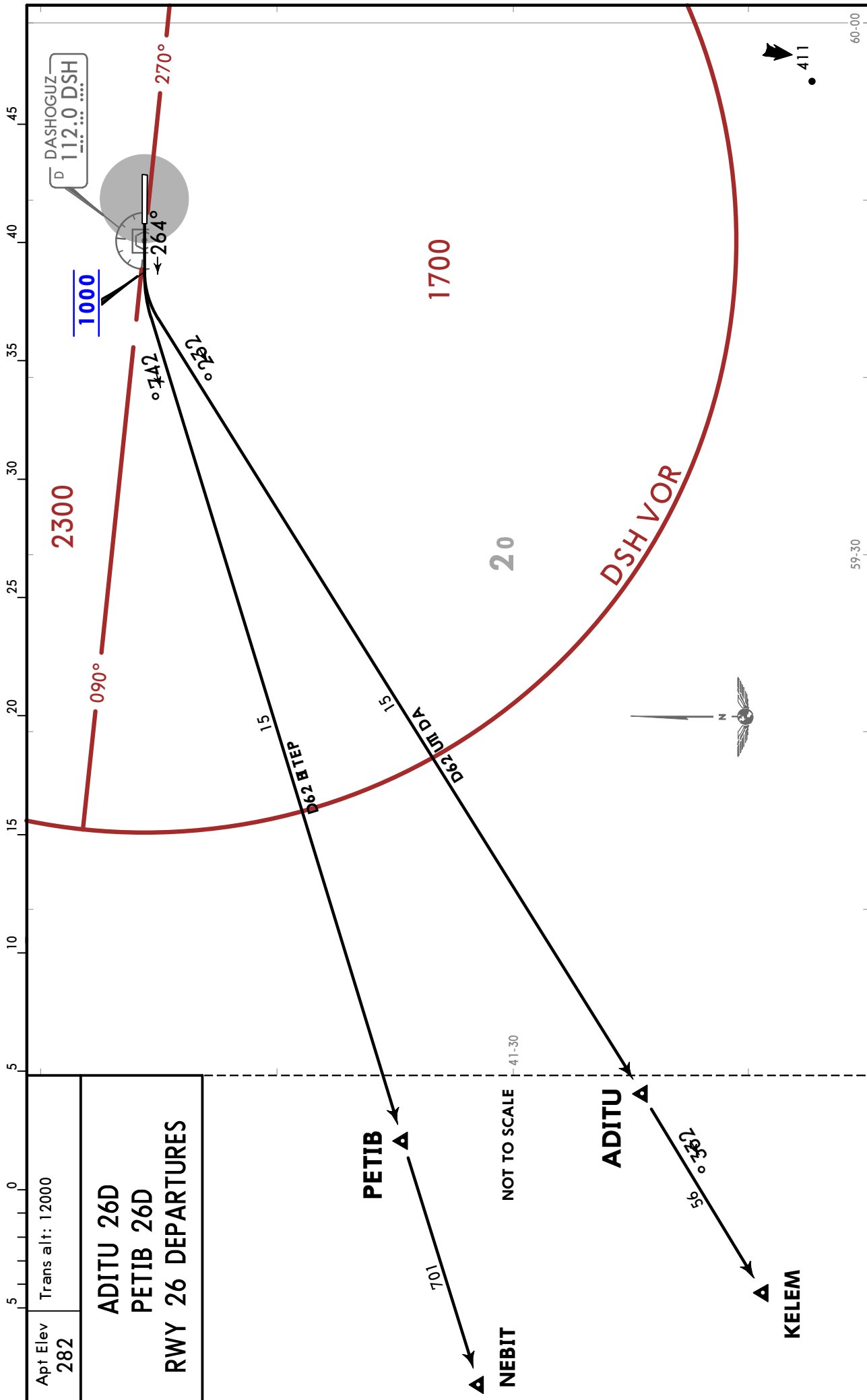
© JEPPESSEN, 2018. ALL RIGHTS RESERVED.

UTAT/TAZ DASHOGUZ

JEPPESSEN DASHOGUZ, TURKMENISTAN

5 OCT 18 (10-3E) Eff 11 Oct

SID



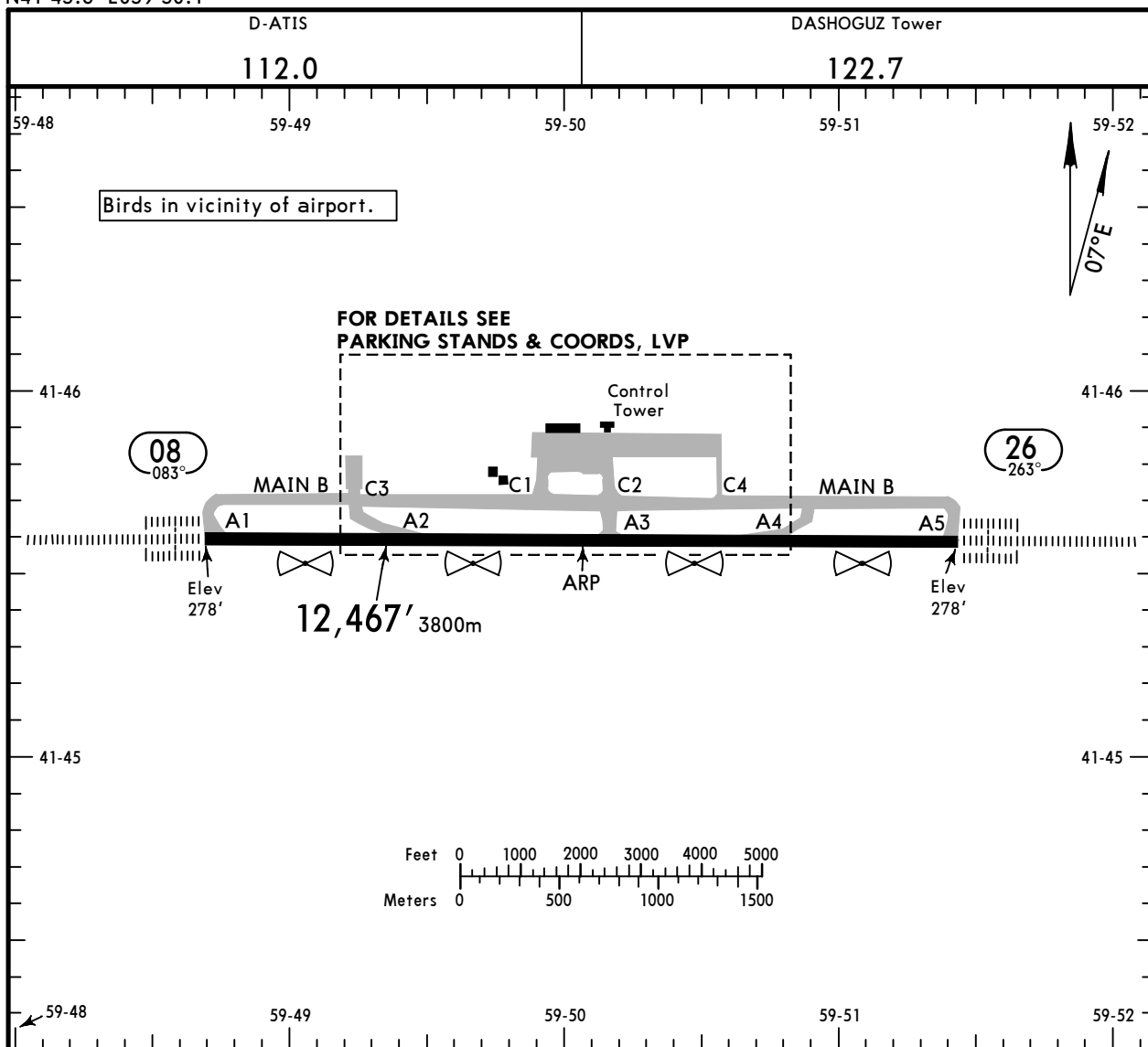
UTAT/TAZ

Apt Elev **282'**
N41 45.6 E059 50.1

JEPPESEN DASHOGUZ, TURKMENISTAN

20 OCT 23 (10-9) Eff 2 Nov

DASHOGUZ



ADDITIONAL RUNWAY INFORMATION

RWY		USABLE LENGTHS			WIDTH
		Threshold	Glide Slope	TAKE-OFF	
08 26	HIRL (60m) CL (15m) HIALS-II TDZ PAPI-L (3.0°) RVR		11,434' 3485m	①	197' 60m

① TAKE-OFF RUN AVAILABLE

<u>RWY 08:</u>	From rwy head	12,467' (3800m)
	twy A2 int	8678' (2645m)
	twy A3 int	5774' (1760m)
<u>RWY 26:</u>	From rwy head	12,467' (3800m)
	twy A4 int	8678' (2645m)
	twy A3 int	6693' (2040m)

State	TAKE-OFF					
	CL		RCLM			
	DAY	NIGHT	DAY	NIGHT		
A	① R200m		R300m			
B			R300m			
C					R400m	
D						

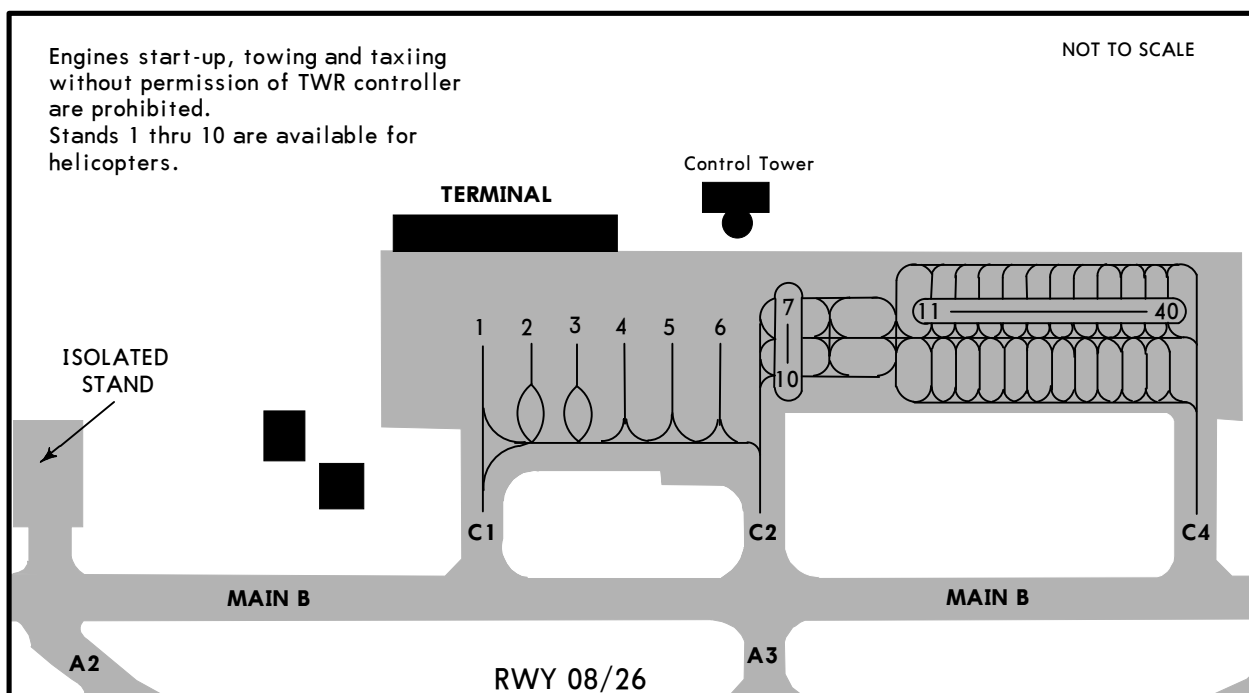
① Available when friction coefficient is not less than 0.5 and crosswind component does not exceed half of maximum allowed value for take-off for this ACFT type.

UTAT/TAZ

JEPPESEN DASHOGUZ, TURKMENISTAN

20 OCT 23 10-9A Eff 2 Nov

DASHOGUZ



INS COORDINATES	
STAND No.	COORDINATES
1, 2	N41 45.1 E059 49.2
3 thru 6	N41 45.1 E059 50.0
ISOLATED STAND	N41 45.1 E059 49.0

LOW VISIBILITY PROCEDURES (LVP)

LVP are initiated by the phrase: "Low visibility procedures in progress." LVP are applied when RVR is 900m or less, and/or ceiling is 230'/70m or less.
After landing on RWY 08/26 in low visibility condition the flight crew must report the execution of landing and RWY vacated to TWR controller.

UTAT/TAZ



EASA AIR OPS

DASHOGUZ, TURKMENISTAN
DASHOGUZ

STRAIGHT-IN RWY		A	B	C	D
08	CAT 2 ILS	378' (100') RA 106' R300m	378' (100') RA 106' R300m	378' (100') RA 106' R300m	378' (100') RA 106' ① R300m
	ILS	478' (200') R550m V800m	478' (200') R550m V800m	478' (200') R550m V800m	478' (200') R550m V800m
	TDZ or CL out	② R550m V800m	② R550m V800m	② R550m V800m	② R550m V800m
	ALS out	R1200m	R1200m	R1200m	R1200m
	LOC	NOT AUTH	NOT AUTH	NOT AUTH	NOT AUTH
	③ VOR	610' (332') R/V1000m R/V1700m	610' (332') R/V1000m R/V1700m	610' (332') R/V1200m R/V1900m	610' (332') R/V1200m R/V1900m
	③ 2 NDB	630' (352') R/V1000m R/V1700m	630' (352') R/V1000m R/V1700m	630' (352') R/V1200m R/V1900m	630' (352') R/V1200m R/V1900m
	ALS out	R1200m	R1200m	R1200m	R1200m
26	CAT 2 ILS	378' (100') RA 106' R300m	378' (100') RA 106' R300m	378' (100') RA 106' R300m	378' (100') RA 106' ① R300m
	ILS	478' (200') R550m V800m	478' (200') R550m V800m	478' (200') R550m V800m	478' (200') R550m V800m
	TDZ or CL out	② R550m V800m	② R550m V800m	② R550m V800m	② R550m V800m
	ALS out	R1200m	R1200m	R1200m	R1200m
	LOC	NOT AUTH	NOT AUTH	NOT AUTH	NOT AUTH
	③ VOR	610' (332') R/V1000m R/V1700m	610' (332') R/V1000m R/V1700m	610' (332') R/V1200m R/V1900m	610' (332') R/V1200m R/V1900m
	③ NDB	940' (662') R/V2500m R/V3300m	940' (662') R/V2500m R/V3300m	940' (662') R/V2700m R/V3500m	940' (662') R/V2700m R/V3500m
	ALS out	R1200m	R1200m	R1200m	R1200m

① R350m without autoland.

② R750m when a Flight Director or Autopilot or HUDLS to DA is not used.

③ Continuous Descent Final Approach.

TAKE-OFF

	CL		RCLM	
	DAY	NIGHT	DAY	NIGHT
A	④ R200m		R300m	
B			R300m	
C			R300m	R400m
D			R300m	R400m

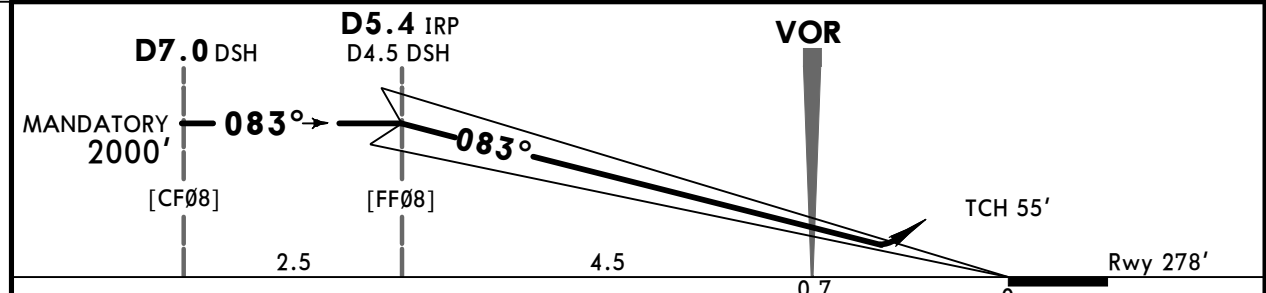
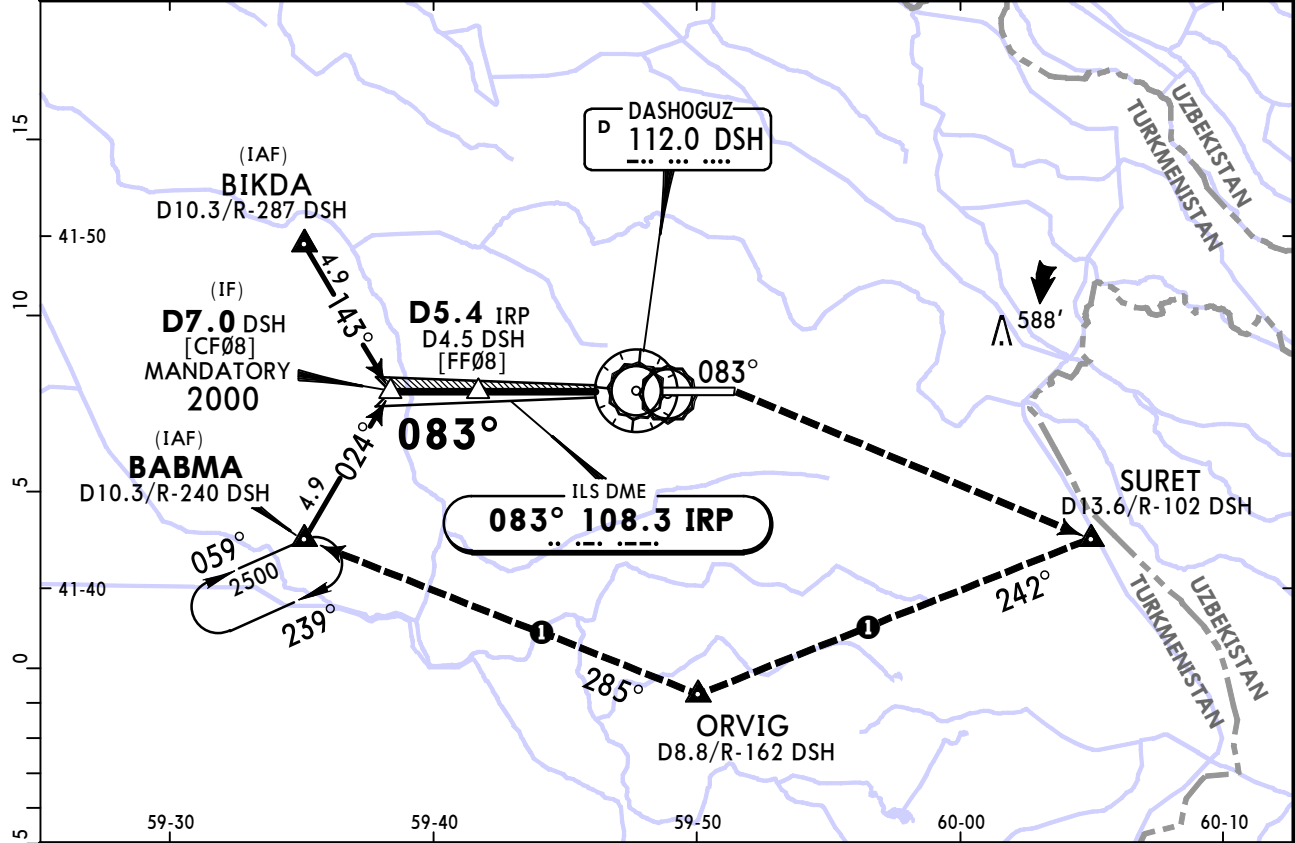
④ Available when friction coefficient is not less than 0.5 and crosswind component does not exceed half of maximum allowed value for take-off for this ACFT type.

UTAT/TAZ DASHOGUZ

JEPESEN DASHOGUZ, TURKMENISTAN
20 OCT 23 **(11-1) Eff 2 Nov** ILS Rwy 08

D-ATIS 112.0		DASHOGUZ Approach 124.7		DASHOGUZ Tower 122.7	
LOC IRP 108.3	Final Apch Crs 083°	D5.4 IRP MANDATORY 2000' (1722')	ILS DA(H) 478' (200')	Apt Elev 282' Rwy 278'	
MISSED APCH: Climb on 083° to 1000', then turn RIGHT to SURET climbing to 2500', then according to chart, or as directed. MISSED APCH WITH COMM FAILURE: ① Set SSR transponder to code 7600. Climb to SURET to 2500', then proceed to ORVIG, then to holding area over BABMA and hold for 3 min, then proceed according to chart.					

Alt Set: hPa Rwy Elev: 10 hPa Trans level: FL120 Trans alt: 12000'



Gnd speed-Kts	70	90	100	120	140	160	HIALS-II PAPT	Refer to Missed Apch above
Gs	3.00°	372	478	531	637	743		

State STRAIGHT-IN LANDING ILS DA(H) **478'** (200')

ALS out	
A	R550m V800m
B	
C	
D	

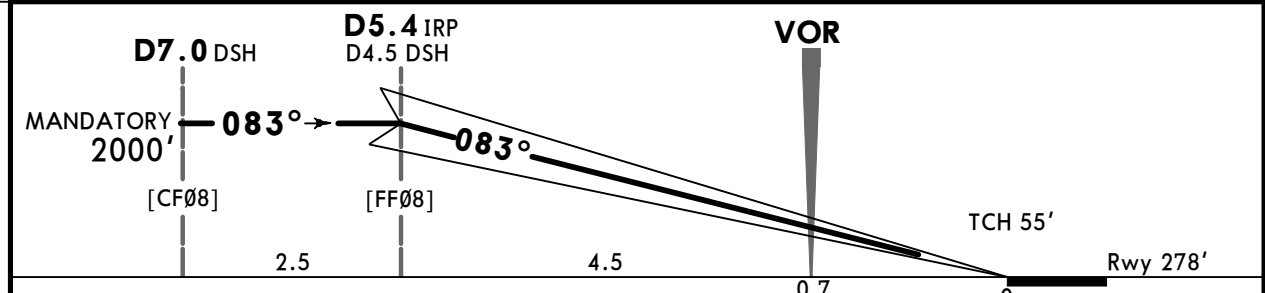
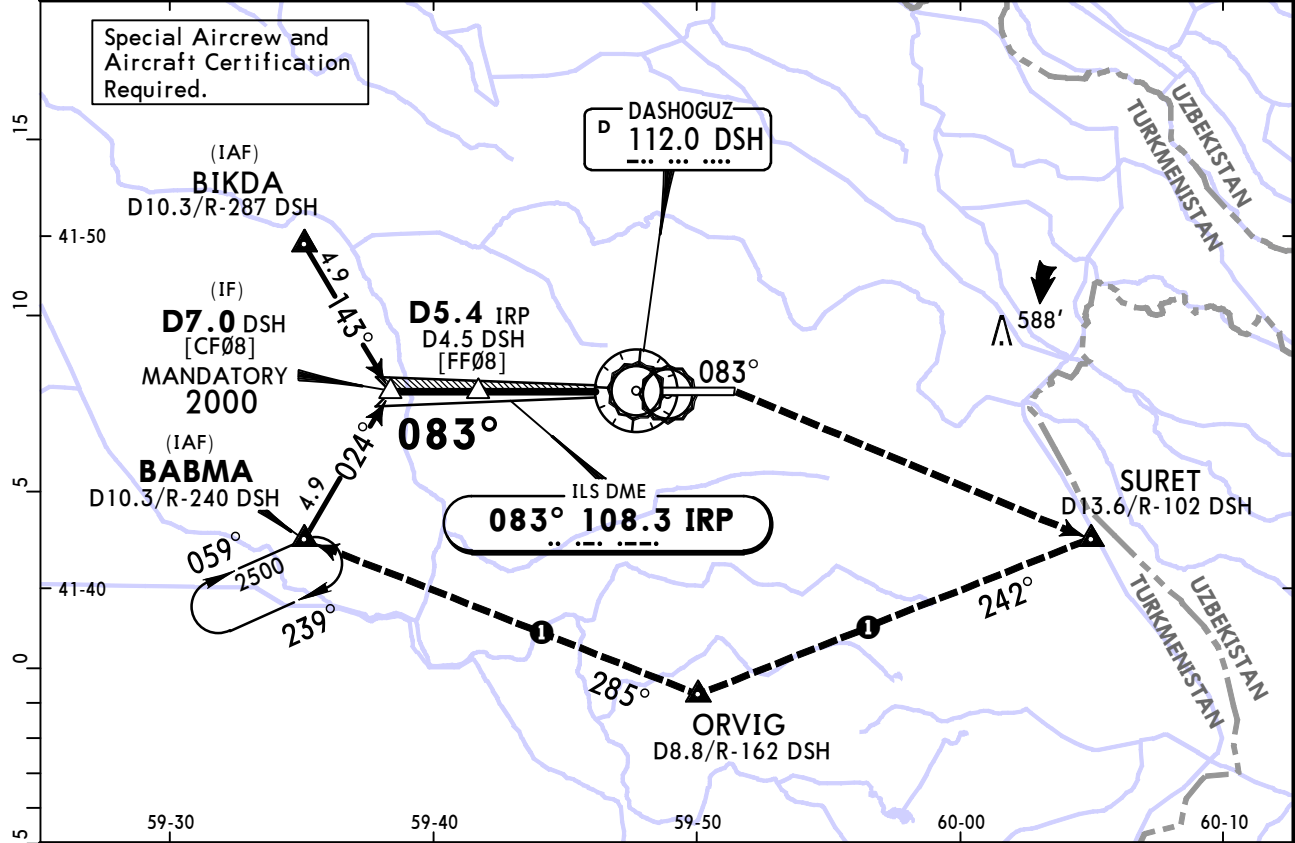
PANS OPS

UTAT/TAZ DASHOGUZ

JEPPESEN DASHOGUZ, TURKMENISTAN 20 OCT 23 (11-1A) Eff 2 Nov CAT II ILS Rwy 08

D-ATIS 112.0		DASHOGUZ Approach 124.7		DASHOGUZ Tower 122.7	
LOC IRP 108.3	Final Apch Crs 083°	D5.4 IRP MANDATORY 2000' (1722')	CAT II ILS RA 106' DA(H) 378' (100')	Apt Elev 282'	Rwy 278'
<p>MISSED APCH: Climb on 083° to 1000', then turn RIGHT to SURET climbing to 2500', then according to chart, or as directed.</p> <p>MISSED APCH WITH COMM FAILURE: ① Set SSR transponder to code 7600. Climb to SURET to 2500', then proceed to ORVIG, then to holding area over BABMA and hold for 3 min, then proceed according to chart.</p>					

Alt Set: hPa Rwy Elev: 10 hPa Trans level: FL120 Trans alt: 12000'



Gnd speed-Kts	70	90	100	120	140	160	HIALS-II 	Refer to Missed Apch above
GS	3.00°	372	478	531	637	743		

State STRAIGHT-IN LANDING CAT II ILS

RA 106'
DA(H) **378'** (100')

R300m

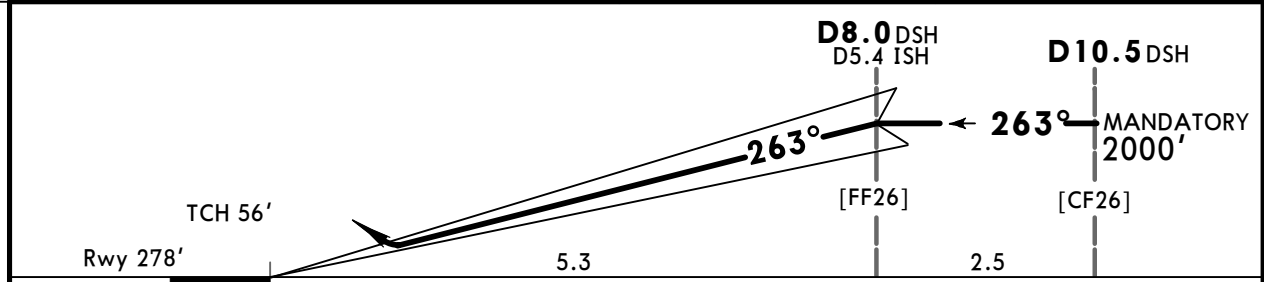
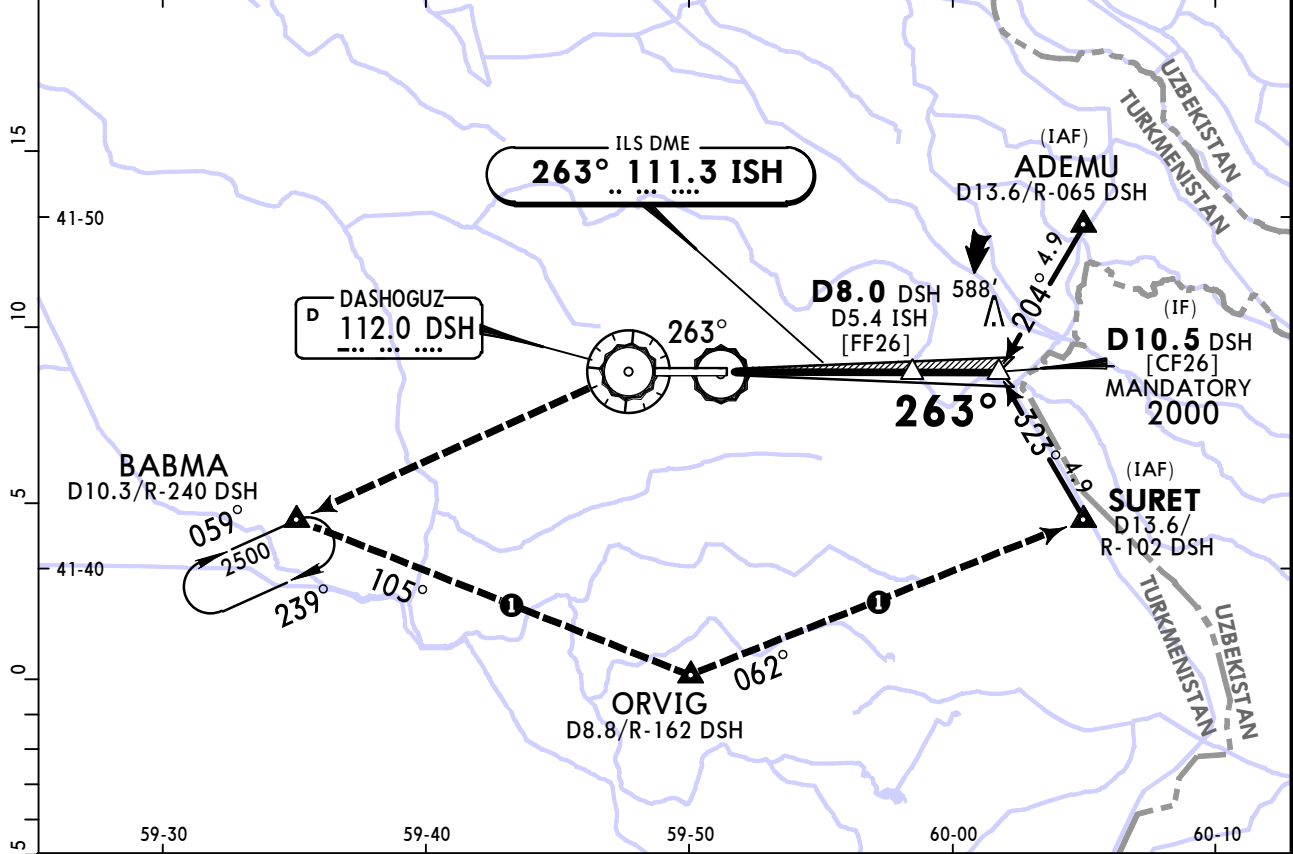
CAT D without autoland: R350m.

UTAT/TAZ DASHOGUZ

JEPPESSEN DASHOGUZ, TURKMENISTAN 20 OCT 23 (11-2) Eff 2 Nov ILS Rwy 26

D-ATIS 112.0		DASHOGUZ Approach 124.7		DASHOGUZ Tower 122.7	
LOC ISH 111.3	Final Apch Crs 263°	D8.0 DSH MANDATORY 2000' (1722')	ILS DA(H) 478' (200')	Apt Elev 282' Rwy 278'	
MISSED APCH: Climb on 263° to VOR at 1000' or above, then turn LEFT to BABMA climbing to 2500', then according to chart, or as directed. MAX 200 KT. MISSED APCH WITH COMM FAILURE: ① Set SSR transponder to code 7600. Climb to holding area over BABMA to 2500' and hold for 3 min, then proceed according to chart.					

Alt Set: hPa Rwy Elev: 10 hPa Trans level: FL120 Trans alt: 12000'



Gnd speed-Kts	70	90	100	120	140	160	HIALS-II PAPI	Refer to Missed Apch above
GS	3.00°	372	478	531	637	743		

State STRAIGHT-IN LANDING
ILS
DA(H) **478'** (200')

ALS out	
A	R550m V800m
B	
C	
D	

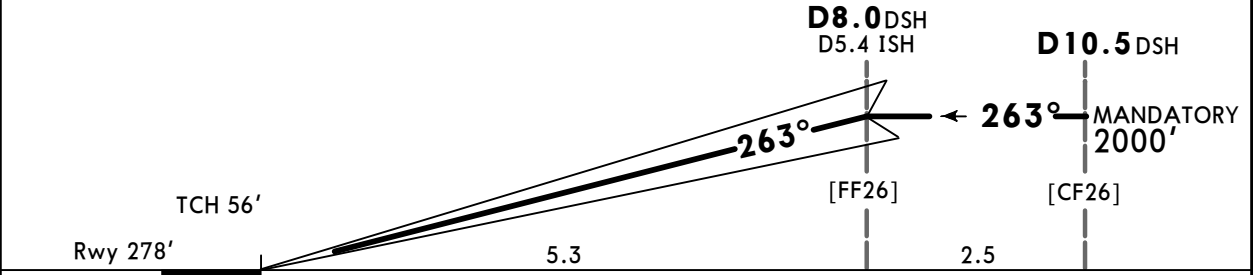
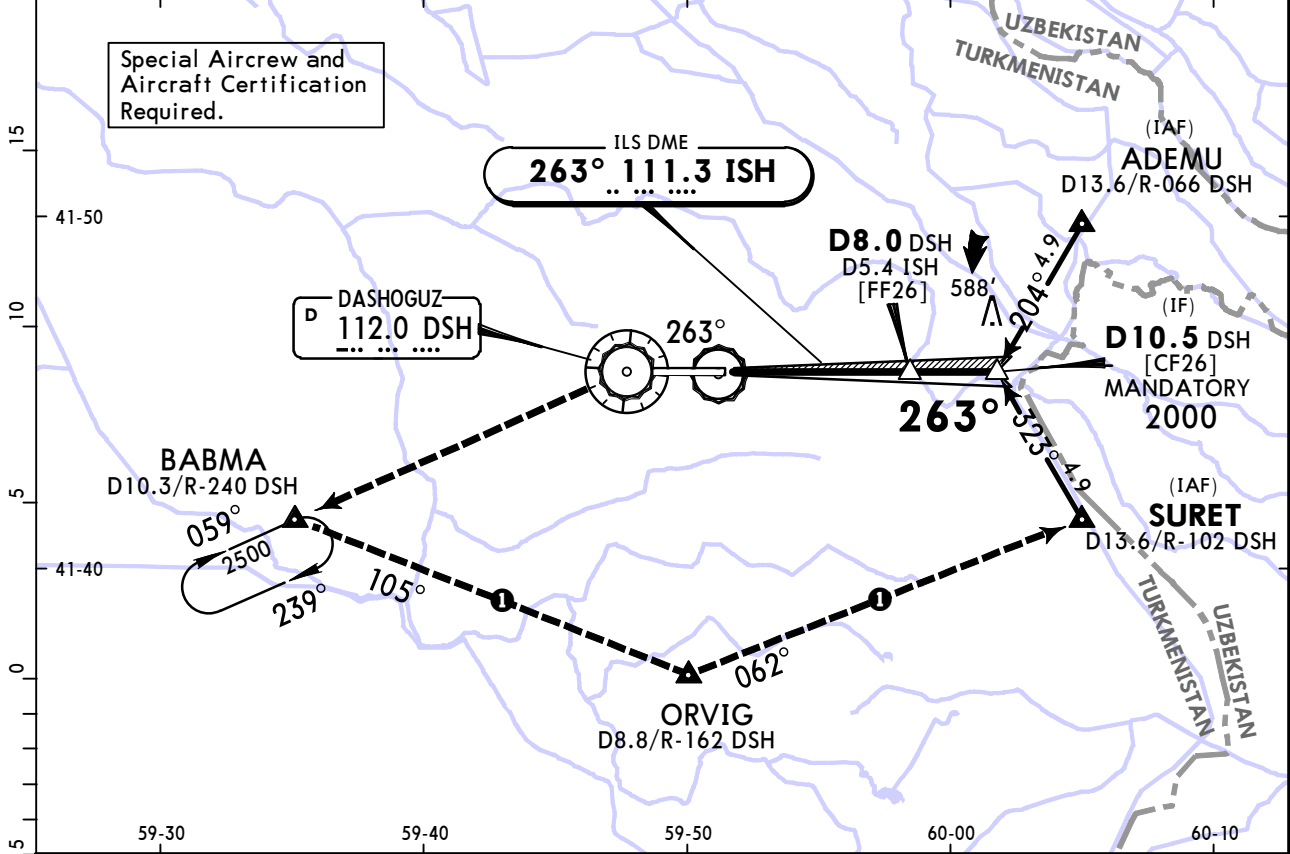
UTAT/TAZ DASHOGUZ

20 OCT 23 **11-2A** Eff 2 Nov

JEPPESEN DASHOGUZ, TURKMENISTAN CAT II ILS Rwy 26

D-ATIS 112.0		DASHOGUZ Approach 124.7		DASHOGUZ Tower 122.7	
LOC ISH 111.3	Final Apch Crs 263°	D8.0 DSH MANDATORY 2000' (1722')	CAT II ILS RA 106' DA(H) 378' (100')	Apt Elev 282'	Rwy 278'
MISSED APCH: Climb on 263° to VOR at 1000' or above, then turn LEFT to BABMA climbing to 2500', then according to chart, or as directed. MAX 200 KT. MISSED APCH WITH COMM FAILURE: ① Set SSR transponder to code 7600. Climb to holding area over BABMA to 2500' and hold for 3 min, then proceed according to chart.					

Alt Set: hPa Rwy Elev: 10 hPa Trans level: FL120 Trans alt: 12000'



Gnd speed-Kts	70	90	100	120	140	160	HIALS-II PAPI	Refer to Missed Apch above
GS	3.00°	372	478	531	637	743		

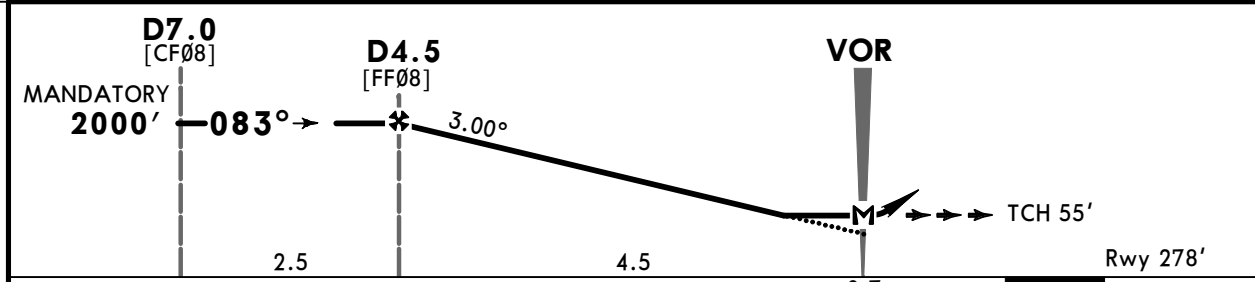
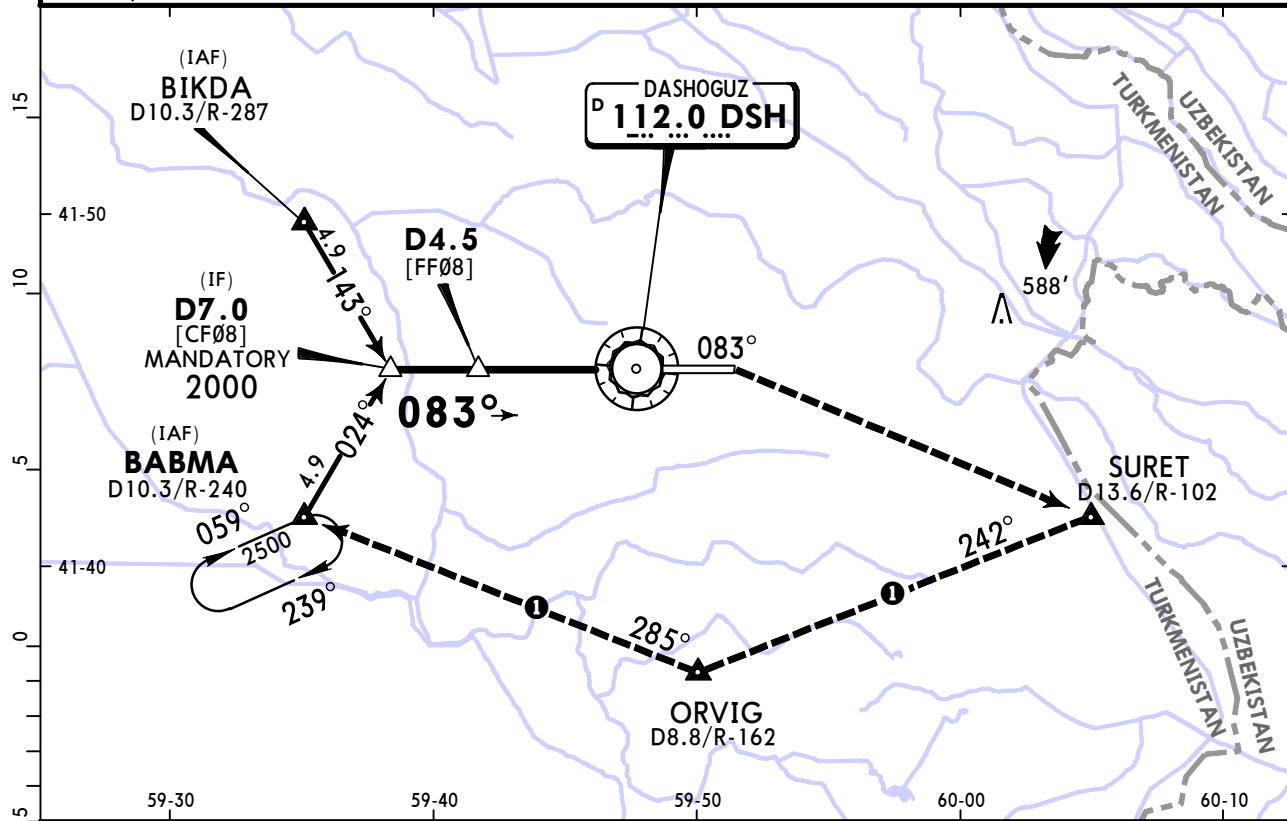
State STRAIGHT-IN LANDING CAT II ILS
RA 106'
 DA(H) **378'** (100')

R300m
 CAT D without autoland: R350m.

UTAT/TAZ DASHOGUZ

JEPPESSEN DASHOGUZ, TURKMENISTAN
10 FEB 23 **13-1** **Eff 23 Feb** **VOR Rwy 08**

D-ATIS 112.0		DASHOGUZ Approach 124.7		DASHOGUZ Tower 122.7	
VOR DSH 112.0	Final Apch Crs 083°	D4.5 MANDATORY 2000' (1722')	MDA(H) 610' (332')	Apt Elev 282' Rwy 278'	
MISSED APCH: Climb on 083° to 1000', then turn RIGHT to SURET climbing to 2500', then according to chart or as directed. MAX 200 KT. MISSED APCH WITH COMM FAILURE: ① Set SSR transponder to code 7600. Climb to SURET to 2500', then proceed to ORVIG, then to holding area over BABMA and hold for 3 min, then proceed according to chart.					
Alt Set: hPa		Rwy Elev: 10 hPa		Trans level: FL120	
DME required.					



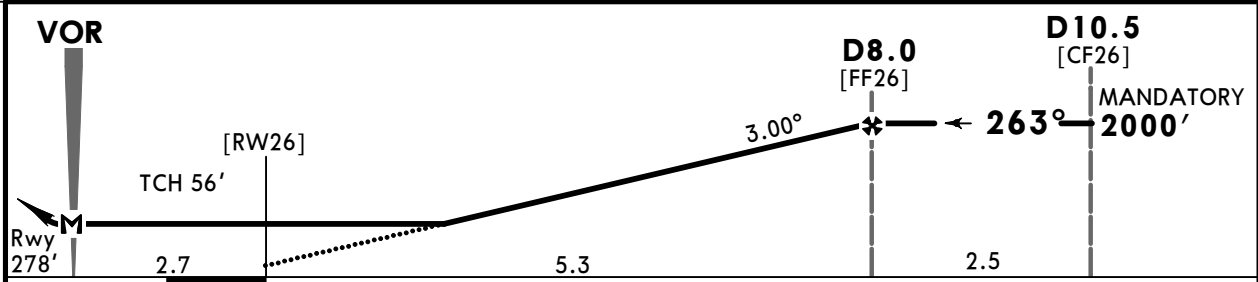
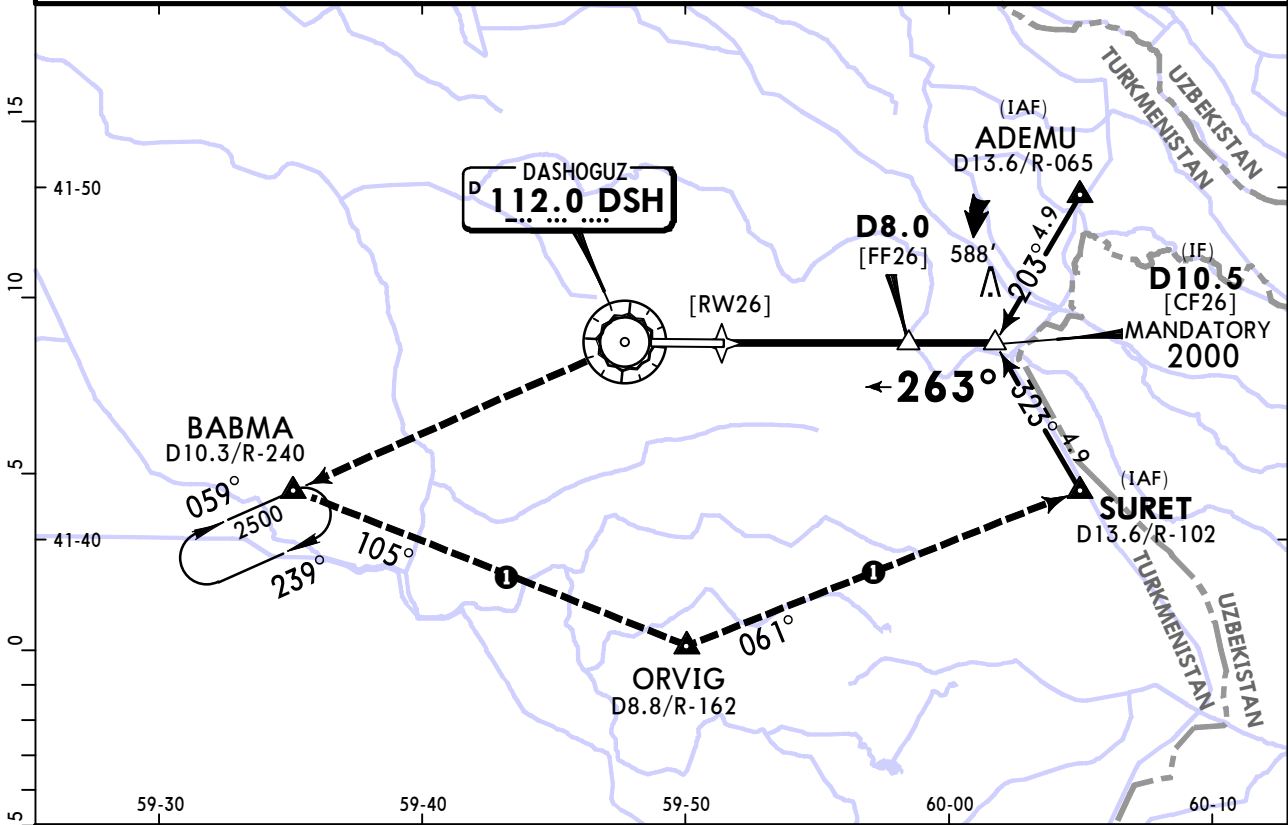
Gnd speed-Kts	70	90	100	120	140	160	HIALS-II PAPI	Refer to Missed Apch above
Descent Angle 3.00°	372	478	531	637	743	849		
MAP at VOR								

State		STRAIGHT-IN LANDING	
		MDA(H) 610' (332')	
		ALS out	
A	V1000m	V1700m	
B	V1200m	V1900m	
C			
D			

UTAT/TAZ DASHOGUZ

JEPPESSEN DASHOGUZ, TURKMENISTAN
10 FEB 23 **(13-2)** Eff 23 Feb **VOR Rwy 26**

D-ATIS 112.0		DASHOGUZ Approach 124.7		DASHOGUZ Tower 122.7	
VOR DSH 112.0	Final Apch Crs 263°	D8.0 MANDATORY 2000' (1722')	MDA(H) 610' (332')	Apt Elev 282' Rwy 278'	<p>2300 090° ← → 270° 1700 MSA DSH VOR</p>
<p>MISSED APCH: Climb on 263° to VOR at 1000' or above, then turn LEFT to BABMA climbing to 2500', then according to chart, or as directed. MAX 200 KT. MISSED APCH WITH COMM FAILURE: ① Set SSR transponder to code 7600. Climb to holding area over BABMA to 2500' and hold for 3 min, then proceed according to chart.</p>					
Alt Set: hPa		Rwy Elev: 10 hPa		Trans level: FL120	
DME required.					



Gnd speed-Kts	70	90	100	120	140	160	HIALS-II PAPI	Refer to Missed Apch above
Descent Angle 3.00°	372	478	531	637	743	849		
MAP at VOR								

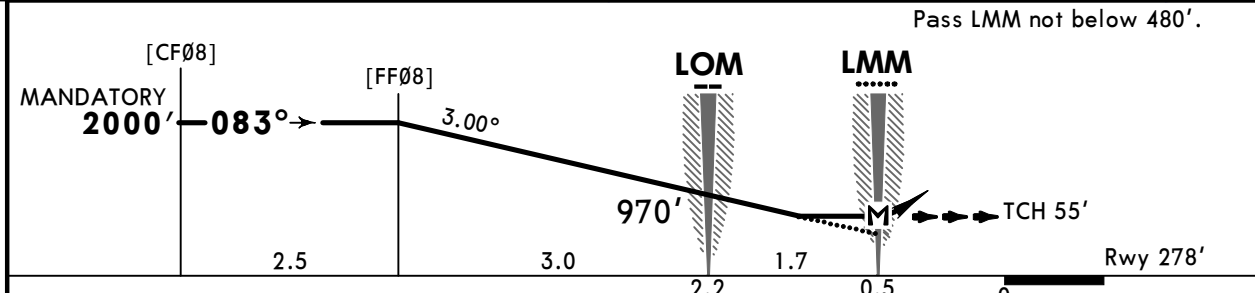
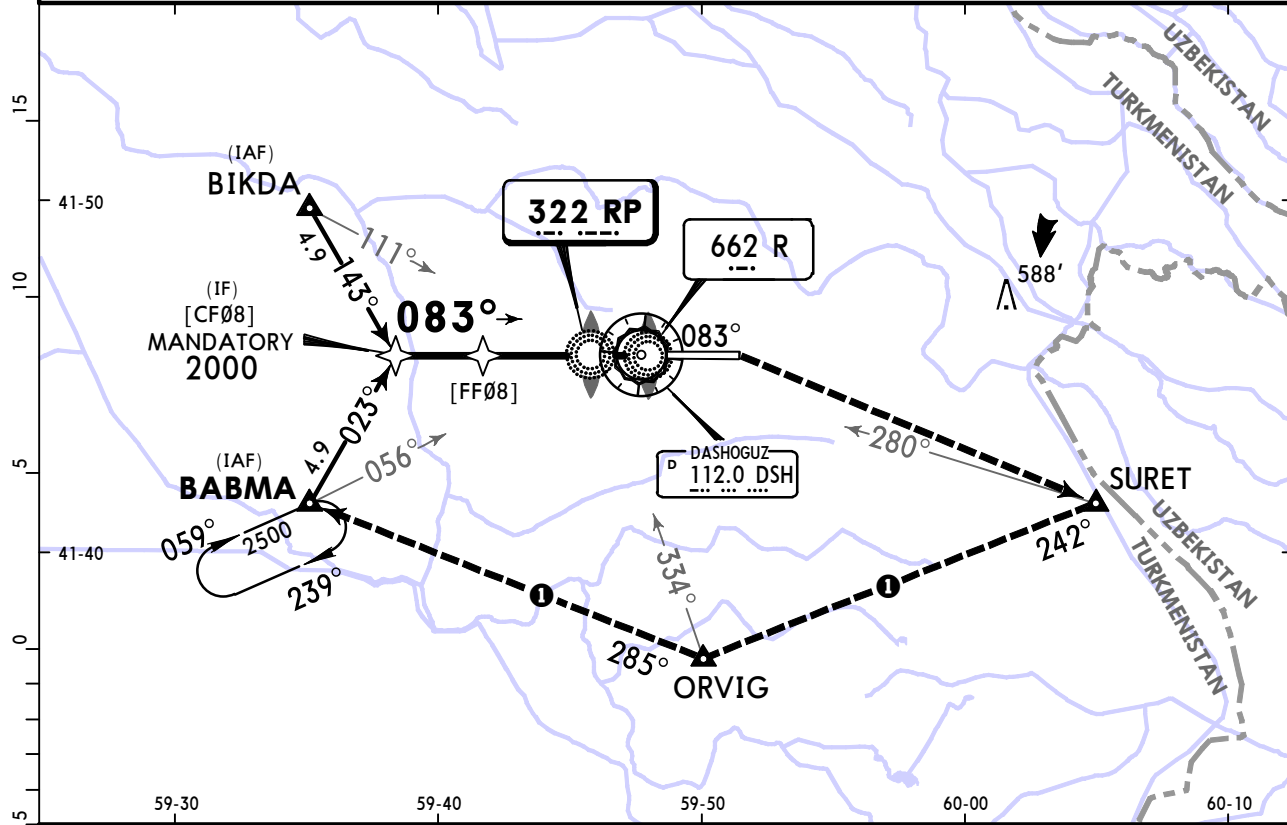
State		STRAIGHT-IN LANDING	
		MDA(H) 610' (332')	
		ALS out	
A	V1000m	V1700m	
B	V1000m	V1700m	
C	V1200m	V1900m	
D	V1200m	V1900m	

UTAT/TAZ DASHOGUZ

JEPESEN DASHOGUZ, TURKMENISTAN
16 DEC 22 (16-1) Eff 29 Dec 2 NDB Rwy 08

D-ATIS 112.0		DASHOGUZ Approach 124.7		DASHOGUZ Tower 122.7	
NDB RP 322	Final Apch Crs 083°	No FAF	MDA(H) 630' (352')	Apt Elev 282' Rwy 278'	
MISSED APCH: Climb on 083° to 1000', then turn RIGHT to SURET climbing to 2500', then according to chart, or as directed. MAX 200 KT. MISSED APCH WITH COMM FAILURE: ①Set SSR transponder to code 7600. Climb to SURET to 2500', then to ORVIG then to holding area over BABMA and hold for 3 min, then proceed according to chart.					

Alt Set: hPa Rwy Elev: 10 hPa Trans level: FL120 Trans alt: 12000'



Gnd speed-Kts	70	90	100	120	140	160	HTALS-II PAPI 	Refer to Missed Apch above
Descent Angle 3.00°	372	478	531	637	743	849		
MAP at LMM								

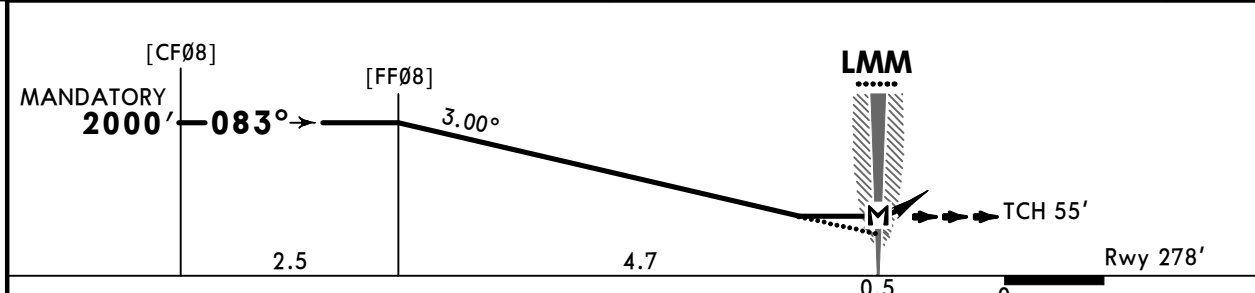
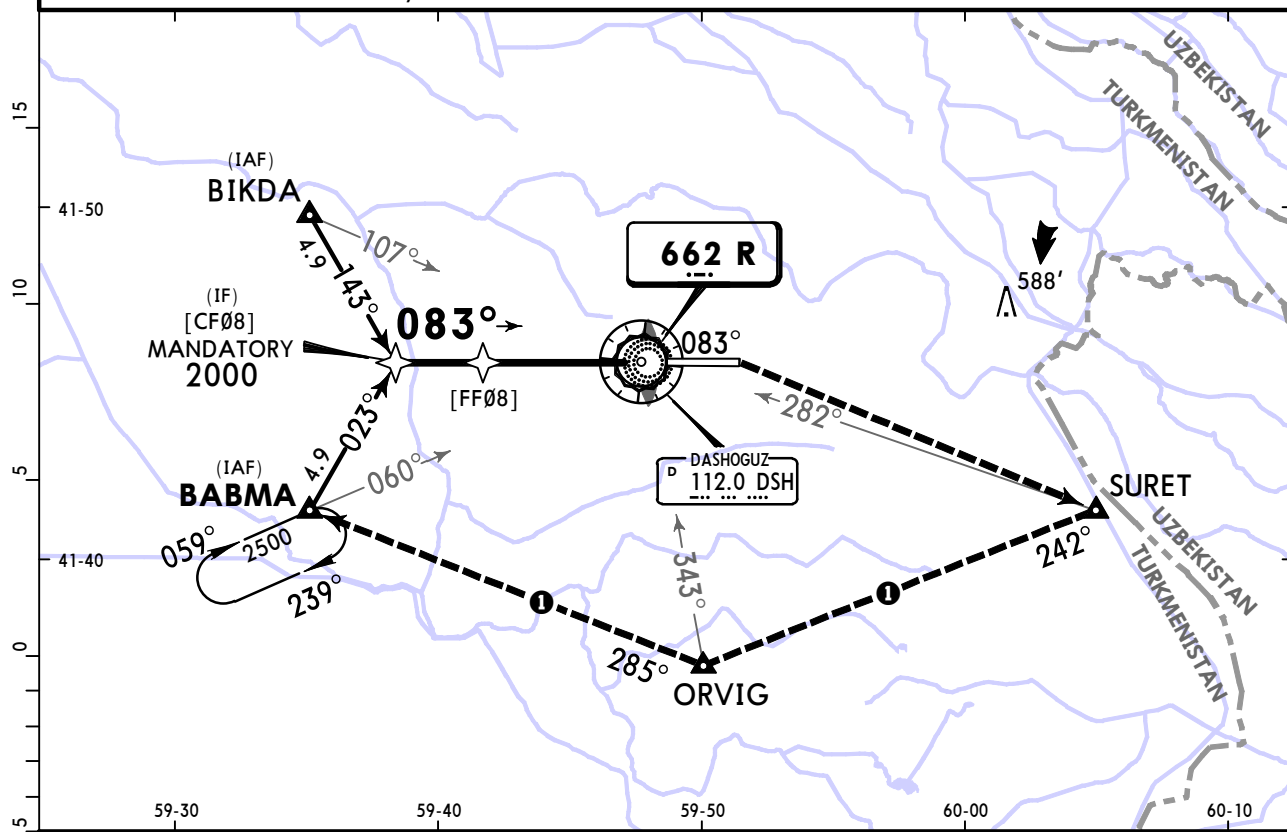
State		STRAIGHT-IN LANDING	
		MDA(H) 630' (352')	
		ALS out	
A	V1000m	V1700m	
B			
C	V1200m	V1900m	
D			

PANS OPS

UTAT/TAZ DASHOGUZ

JEPPESSEN DASHOGUZ, TURKMENISTAN
16 DEC 22 (16-2) Eff 29 Dec
NDB Rwy 08

BRIEFING STRIP™	D-ATIS 112.0		DASHOGUZ Approach 124.7		DASHOGUZ Tower 122.7	
	Lctr R 662	Final Apch Crs 083°	No FAF	MDA(H) 940' (662')	Apt Elev 282' Rwy 278'	
	<p>MISSED APCH: Climb on 083° to 1000', then turn RIGHT to SURET climbing to 2500', then according to chart, or as directed. MAX 200 KT.</p> <p>MISSED APCH WITH COMM FAILURE: ① Set SSR transponder to code 7600. Climb to SURET to 2500', then to ORVIG then to holding area over BABMA and hold for 3 min, then proceed according to chart.</p>					
Alt Set: hPa		Rwy Elev: 10 hPa		Trans level: FL120		Trans alt: 12000'



Gnd speed-Kts	70	90	100	120	140	160		Refer to Missed Apch above
Descent Angle 3.00°	372	478	531	637	743	849		
MAP at LMM								

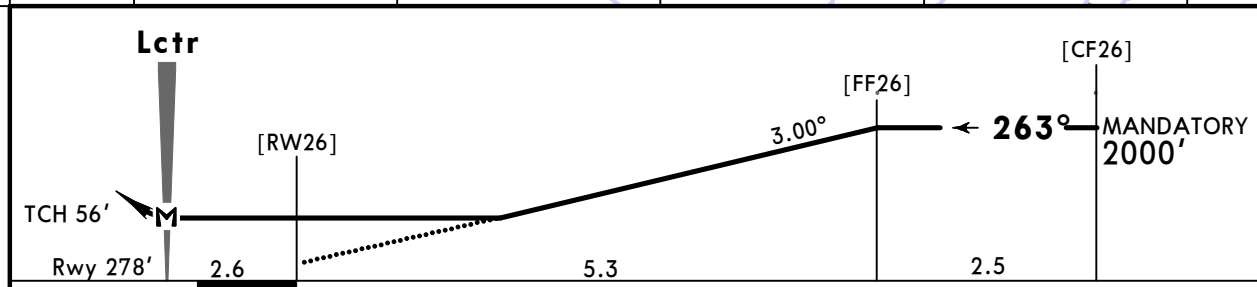
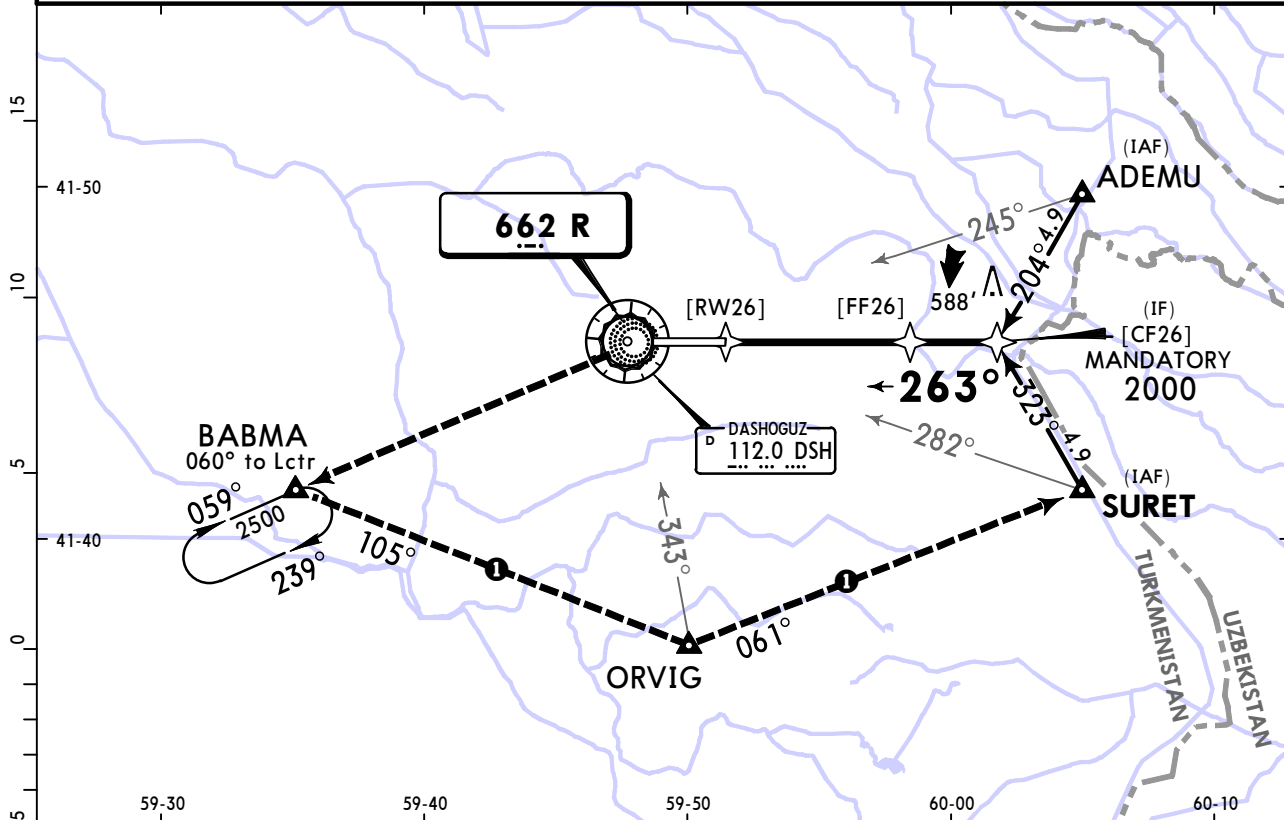
State		STRAIGHT-IN LANDING	
		MDA(H) 940' (662')	
		ALS out	
A	V2500m	V3300m	
B			
C	V2700m	V3500m	
D			

UTAT/TAZ DASHOGUZ

JEPPESSEN DASHOGUZ, TURKMENISTAN
16 DEC 22 **16-3** Eff 29 Dec **NDB Rwy 26**

D-ATIS 112.0		DASHOGUZ Approach 124.7		DASHOGUZ Tower 122.7	
Lctr R 662	Final Apch Crs 263°	No FAF	MDA(H) 940' (662')	Apt Elev 282'	Rwy 278'
MISSED APCH: Climb on 263° to Lctr at 1000' or above, then turn LEFT to BABMA climbing to 2500', then according to chart, or as directed. MAX 200 KT. MISSED APCH WITH COMM FAILURE: ① Set SSR transponder to code 7600. Climb to holding area over BABMA to 2500' and hold for 3 min, then proceed according to chart.					2300 090° ← → 270° 1700 MSA ARP

Alt Set: hPa Rwy Elev: 10 hPa Trans level: FL120 Trans alt: 12000'



Gnd speed-Kts	70	90	100	120	140	160	HIALS-II PAPI	Refer to Missed Apch above
Descent Angle	3.00°	372	478	531	637	743		
MAP at Lctr								

State		STRAIGHT-IN LANDING	
		MDA(H) 940' (662')	
		ALS out	
A	V2500m	V3300m	
C	V2700m	V3500m	
D			



Chart changes since cycle 04-2025

ADD = added chart, REV = revised chart, DEL = deleted chart.

ACT	PROCEDURE IDENT	INDEX	REV DATE	EFF DATE
-----	-----------------	-------	----------	----------

DASHOGUZ, (DASHOGUZ - UTAT)

TERMINAL CHART CHANGE NOTICES

No Chart Change Notices for Airport UTAT