

## List of pages in this Trip Kit

Trip Kit Index  
Airport Information For UKBE  
Terminal Charts For UKBE  
Revision Letter For Cycle 09-2019  
Change Notices  
Notebook

## General Information

Location: Kaniv Ukr  
Latitude: N49° 41.8'  
Longitude: E031° 33.8'  
Elevation: 282 ft  
Magnetic Variation: 7.8°E

Customs: No  
Airport Type: IFR  
Landing Fee: No  
Control Tower: No  
Jet Start Unit: No  
LLWS Alert: No  
Beacon: Yes

Sunrise: 0217 Z  
Sunset: 1723 Z



**UKBE**  
HELIPAD KANIV/PEKARI

**JEPPESEN**  
3 MAY 19 **10-3**

**KANIV, UKRAINE**  
**RNAV COPTER SID**

Apt Elev  
**282**

Trans alt: 10010  
 1. RNAV-1 (GNSS).  
 2. RNAV-1 (P-RNAV) approval required, otherwise advise ATC.  
 3. EXPECT close in obstacles.  
 4. Contact KYIV RADAR when passing 2960.  
 5. Surface - level Heliport.

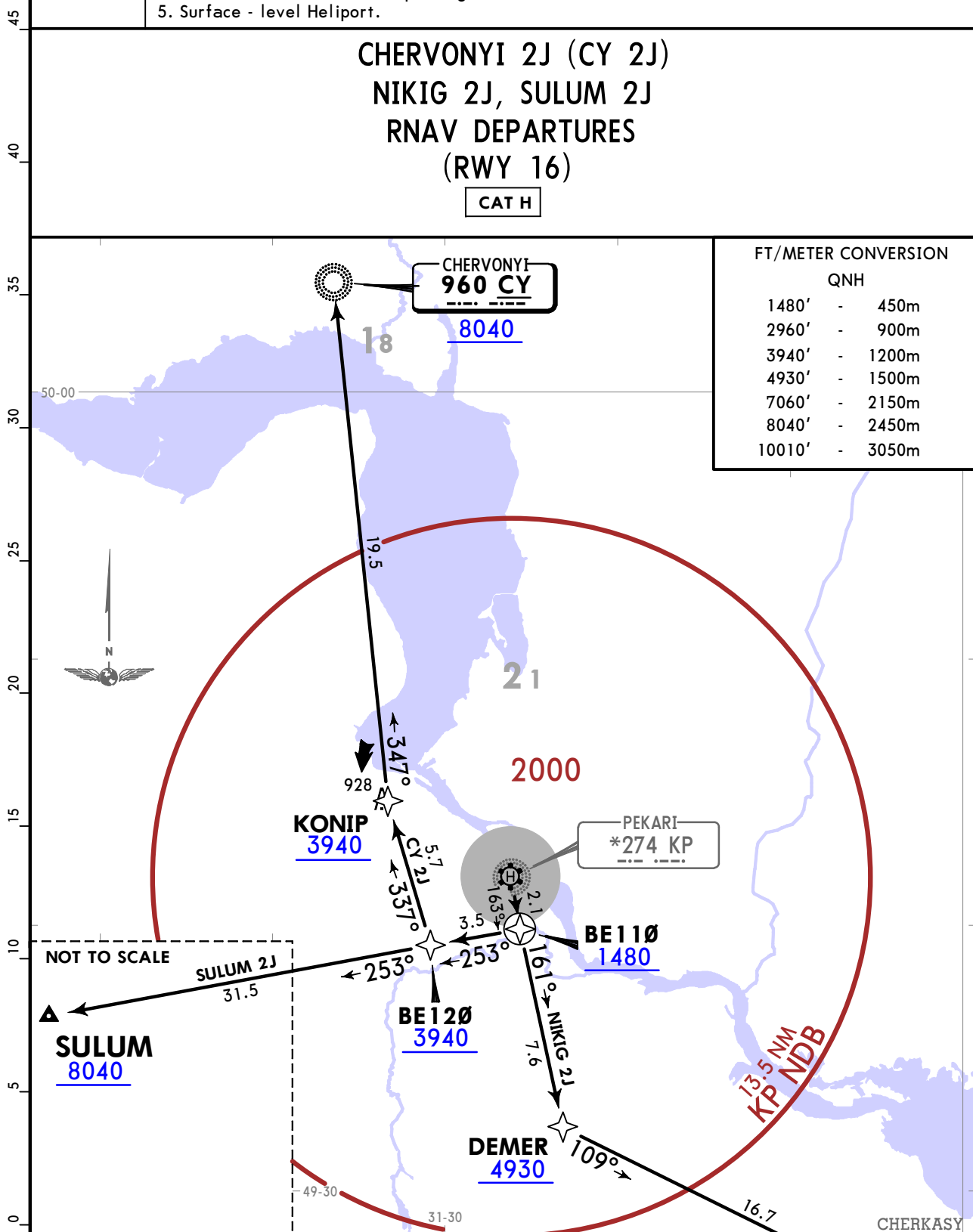
**CHERVONYI 2J (CY 2J)**  
**NIKIG 2J, SULUM 2J**  
**RNAV DEPARTURES**  
**(RWY 16)**

**CAT H**

**FT/METER CONVERSION**

QNH

1480'	-	450m
2960'	-	900m
3940'	-	1200m
4930'	-	1500m
7060'	-	2150m
8040'	-	2450m
10010'	-	3050m



These SIDs require a minimum climb gradient of 10% up to 3940.

Gnd speed-KT	75	100	150	200	250	300
10% V/V (fpm)	760	1013	1519	2025	2532	3038

SID	ROUTING
<b>CY 2J</b>	BE110 (1480+) - BE120 (3940+) - KONIP (3940+) - CY NDB (8040+).
<b>NIKIG 2J</b>	BE110 (1480+) - DEMER (4930+) - NIKIG (7060+).
<b>SULUM 2J</b>	BE110 (1480+) - BE120 (3940+) - SULUM (8040+).

**UKBE**  
HELIPAD KANIV/PEKARI

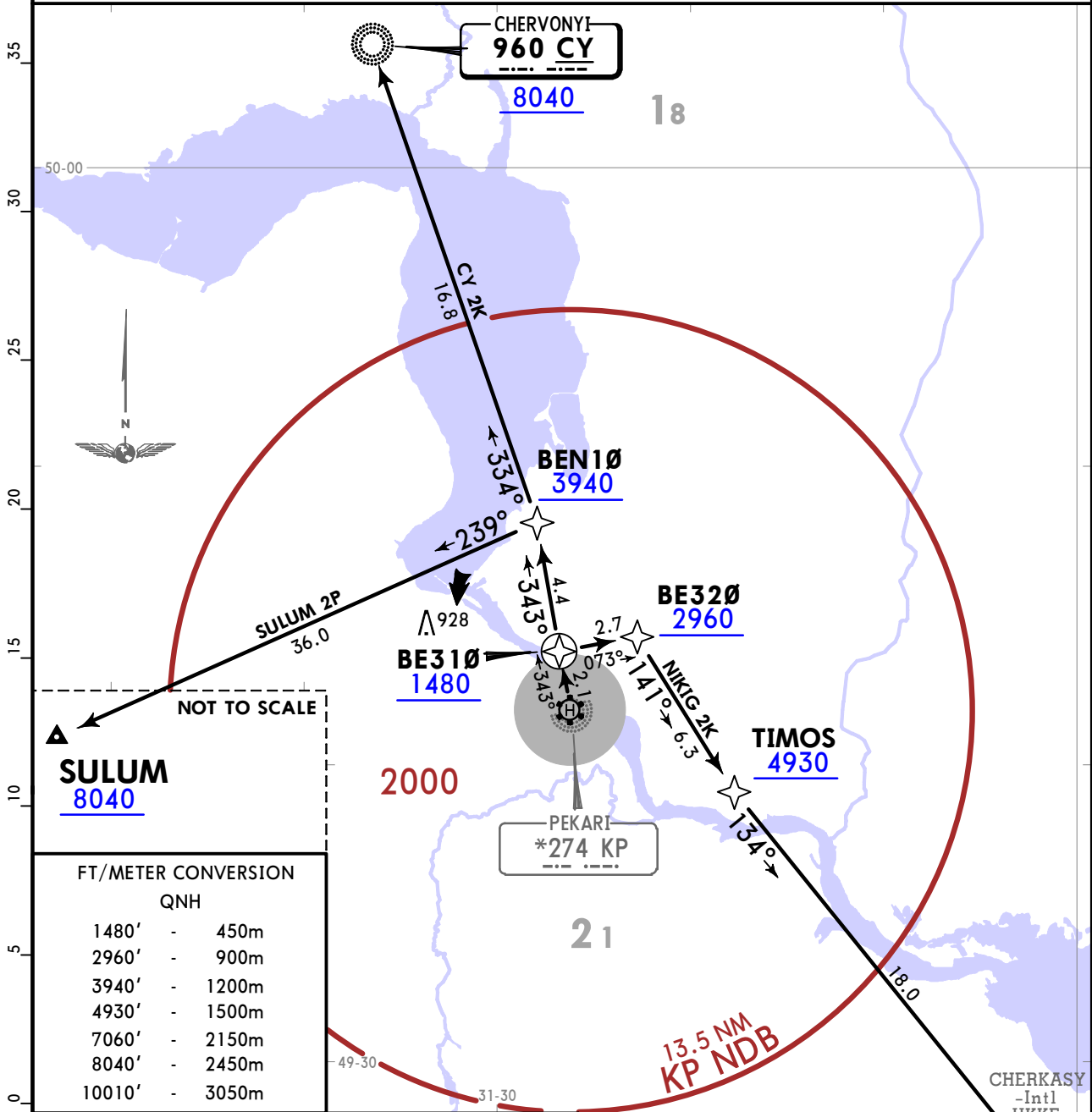
**JEPPESEN**  
3 MAY 19 **(10-3A)**

**KANIV, UKRAINE**  
**RNAV COPTER SID**

- Apt Elev **282**
- Trans alt: 10010
1. RNAV-1 (GNSS).
  2. RNAV-1 (P-RNAV) approval required, otherwise advise ATC.
  3. EXPECT close in obstacles.
  4. Contact KYIV RADAR when passing 2960.
  5. Surface - level Heliport.

**CHERVONYI 2K (CY 2K)**  
**NIKIG 2K, SULUM 2P**  
**RNAV DEPARTURES**  
**(RWY 34)**

**CAT H**



**FT/METER CONVERSION**

QNH	
1480'	450m
2960'	900m
3940'	1200m
4930'	1500m
7060'	2150m
8040'	2450m
10010'	3050m

These SID's require a minimum climb gradient of 10% up to 3940.

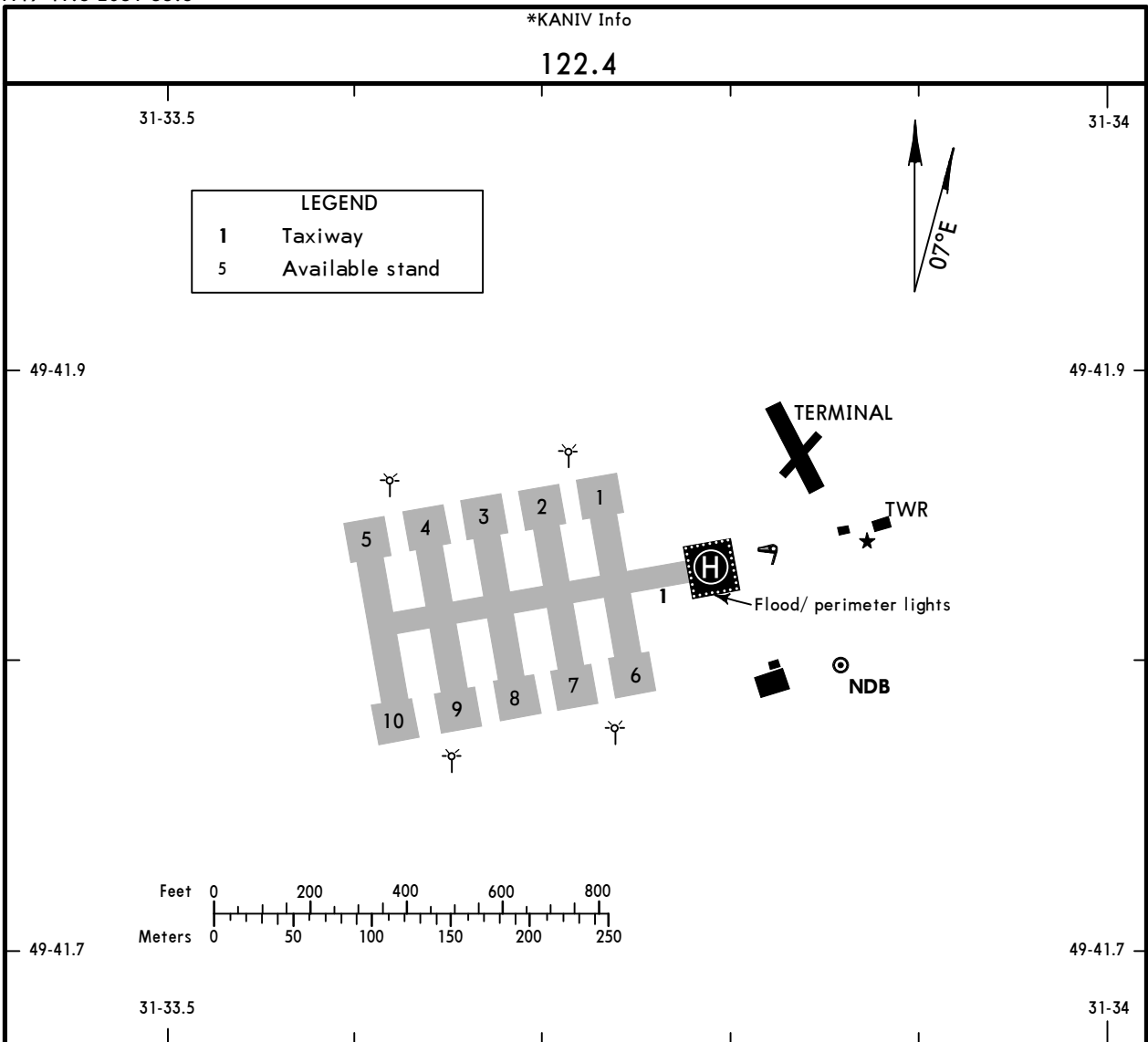
Gnd speed-KT	75	100	150	200	250	300
10% V/V (fpm)	760	1013	1519	2025	2532	3038

SID	ROUTING
<b>CY 2K</b>	BE310 (1480+) - BEN10 (3940+) - CY NDB (8040+).
<b>NIKIG 2K</b>	BE310 (1480+) - BE320 (2960+) - TIMOS (4930+) - NIKIG (7060+).
<b>SULUM 2P</b>	BE310 (1480+) - BEN10 (3940+) - SULUM (8040+).

**UKBE**  
 Apt Elev **282'**  
 N49 41.8 E031 33.8

**JEPPesen**  
 3 MAY 19 **(10-9)**

**KANIV, UKRAINE**  
**HELIPAD KANIV/PEKARI**



	<b>PAD DIMENSIONS</b>
FATO and TLOF lights	98'(30m) x 98'(30m)

--	--	--	--

<b>STD COPTER</b>		<b>TAKE-OFF</b>		
<b>Low Visibility Take-off <b>1</b></b>				
FATO LTS, RCLM & RVR info	FATO LTS & RCLM	Unlit/unmarked, defined FATO	Nil Facilities DAY	Nil Facilities NIGHT
150m	200m	200m	250m <b>2</b>	800m

**1** Without Low Visibility Take-off approval 400m are stipulated.  
**2** Or rejected take-off distance whichever is the greater.

## Chart changes since cycle 08-2019

ADD = added chart, REV = revised chart, DEL = deleted chart.

ACT	PROCEDURE IDENT	INDEX	REV DATE	EFF DATE
<b>KANIV, (HELIPAD KANIV/PEKARI - UKBE)</b>				
ADD	NIKIG & TEPLO 2H, PII 1E ...	10-2	03 May 2019	
ADD	CHERVONYI, NIKIG & SULUM ...	10-3	03 May 2019	
ADD	CHERVONYI & NIKIG 2K, SUL...	10-3A	03 May 2019	
ADD	HELIPORT, HELIPORT INFO, ...	10-9	03 May 2019	

## TERMINAL CHART CHANGE NOTICES

No Chart Change Notices for Airport UKBE