

List of pages in this Trip Kit

Trip Kit Index

Airport Information For UKDE

Terminal Charts For UKDE

Revision Letter For Cycle 05-2025

Change Notices

Notebook

General Information

Location: ZAPORIZHZHIA UKR
ICAO/IATA: UKDE / OZH
Lat/Long: N47° 52.03', E035° 18.90'
Elevation: 374 ft

Airport Use: Public
Daylight Savings: Observed
UTC Conversion: -2:00 = UTC
Magnetic Variation: 7.0° E

Fuel Types: Jet A-1
Repair Types: Minor Airframe, Minor Engine
Customs: Yes
Airport Type: IFR
Landing Fee: Yes
Control Tower: Yes
Jet Start Unit: No
LLWS Alert: No
Beacon: No

Sunrise: 0152 Z
Sunset: 1719 Z

Runway Information

Runway: 02
Length x Width: 8209 ft x 138 ft
Surface Type: concrete
TDZ-Elev: 339 ft
Lighting: Edge, ALS

Runway: 20
Length x Width: 8209 ft x 138 ft
Surface Type: concrete
TDZ-Elev: 373 ft
Lighting: Edge, ALS

Communication Information

Zaporizhzhia Tower: 120.050
Zaporizhzhia Tower: 126.050 Secondary
Zaporizhzhia Radar: 119.200

UKDE/OZH ZAPORIZHZHIA INTL



JEPPESEN

ZAPORIZHZHIA, UKRAINE

11 FEB 22

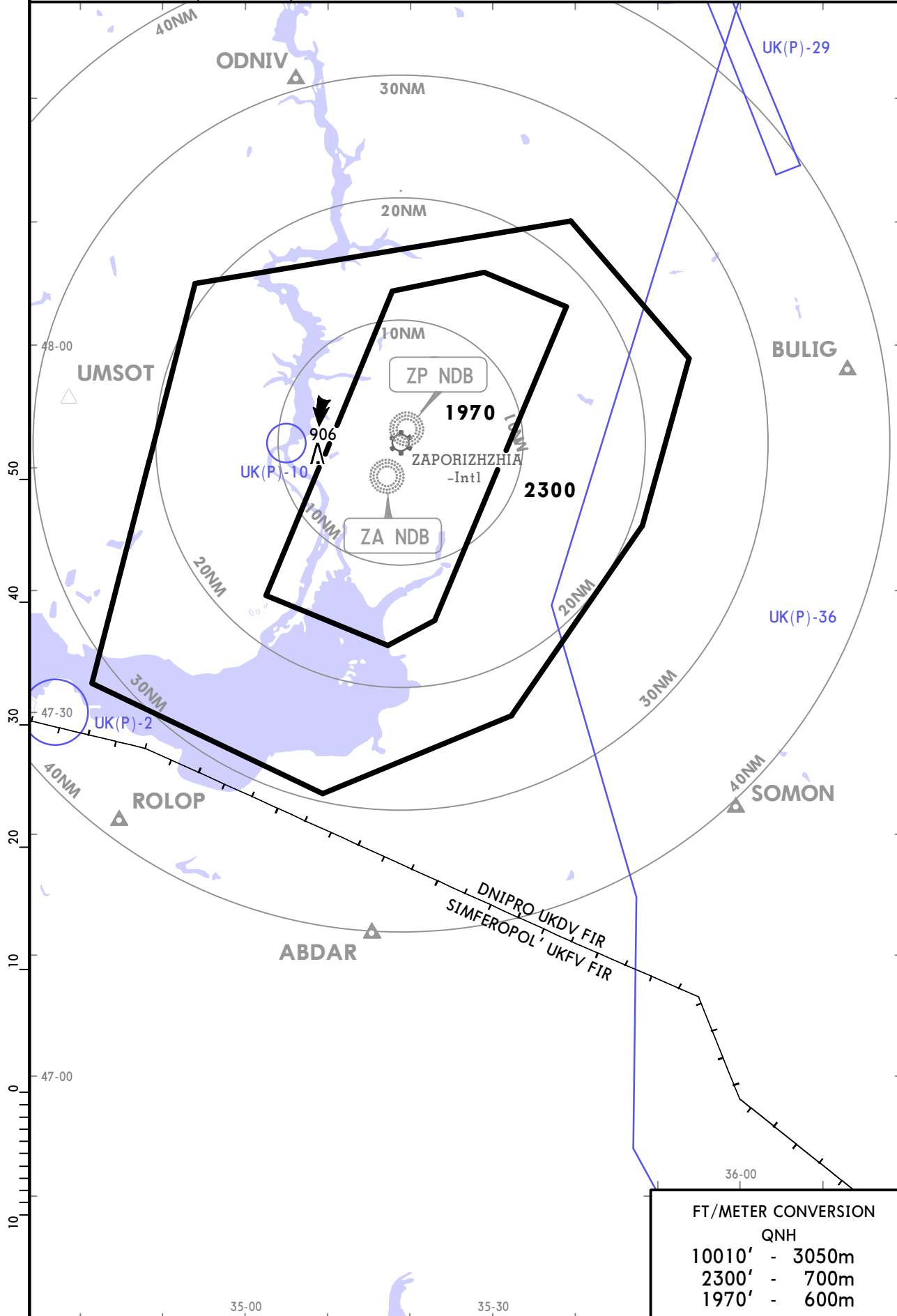
10-1R

Eff 24 Feb RADAR MINIMUM ALTITUDES

ZAPORIZHZHIA
Radar (APP)
119.2

Apt Elev
374

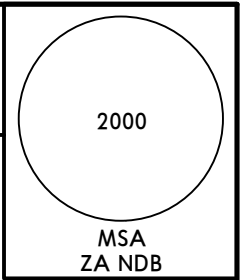
Alt Set: hPa
Trans level: By ATC Trans alt: 10010
1. This chart may only be used for cross-checking of altitudes assigned while under vectoring control.
2. MRVA are safe if the temperature at the surface is 4°C or above. For lower temperatures, corrected minimum levels will be provided by ATC.



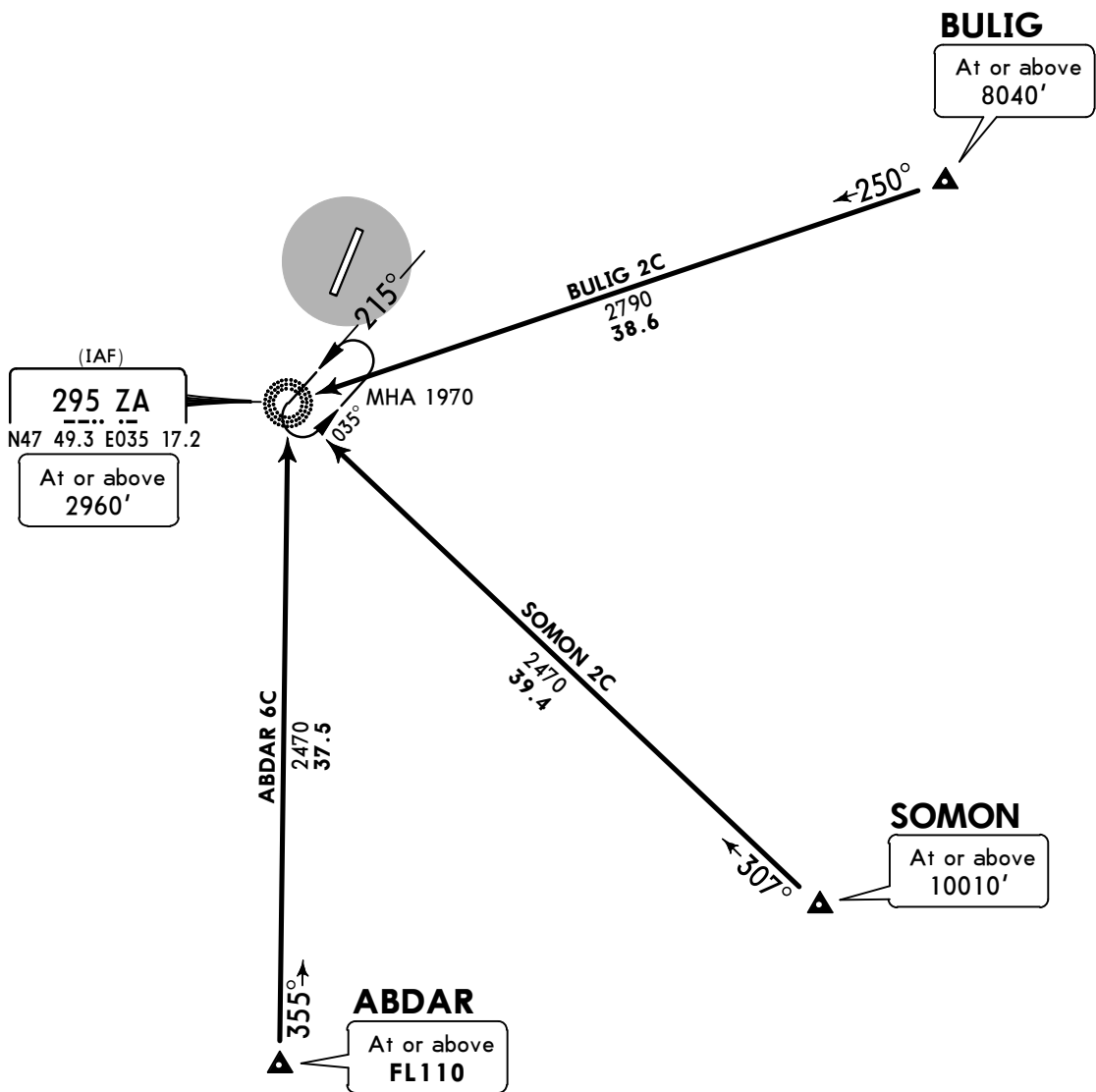
FT/METER CONVERSION	
QNH	
10010'	- 3050m
2300'	- 700m
1970'	- 600m

UKDE/OZH
ZAPORIZHZHIA INTL

Apt Elev **374'**
 Alt Set: hPa
 Trans level: By ATC Trans alt: 10010'
 Due to noise abatement strict adherence to exit patterns by crews is required.



ABDAR 6C [ABDA6C]
BULIG 2C [BULI2C]
SOMON 2C [SOMO2C]
ARRIVALS
(RWY 02)



FT/METER CONVERSION	
QNH	
10010'	- 3050m
8040'	- 2450m
2960'	- 900m
2790'	- 850m
2470'	- 750m
1970'	- 600m

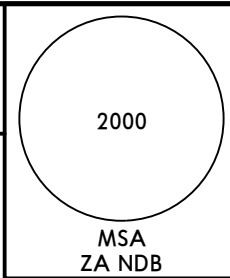
STAR	ROUTING
ABDAR 6C	On 355° bearing to ZA NDB.
BULIG 2C	On 250° bearing to ZA NDB.
SOMON 2C	On 307° bearing to ZA NDB.

UKDE/OZH
ZAPORIZHZHIA INTL

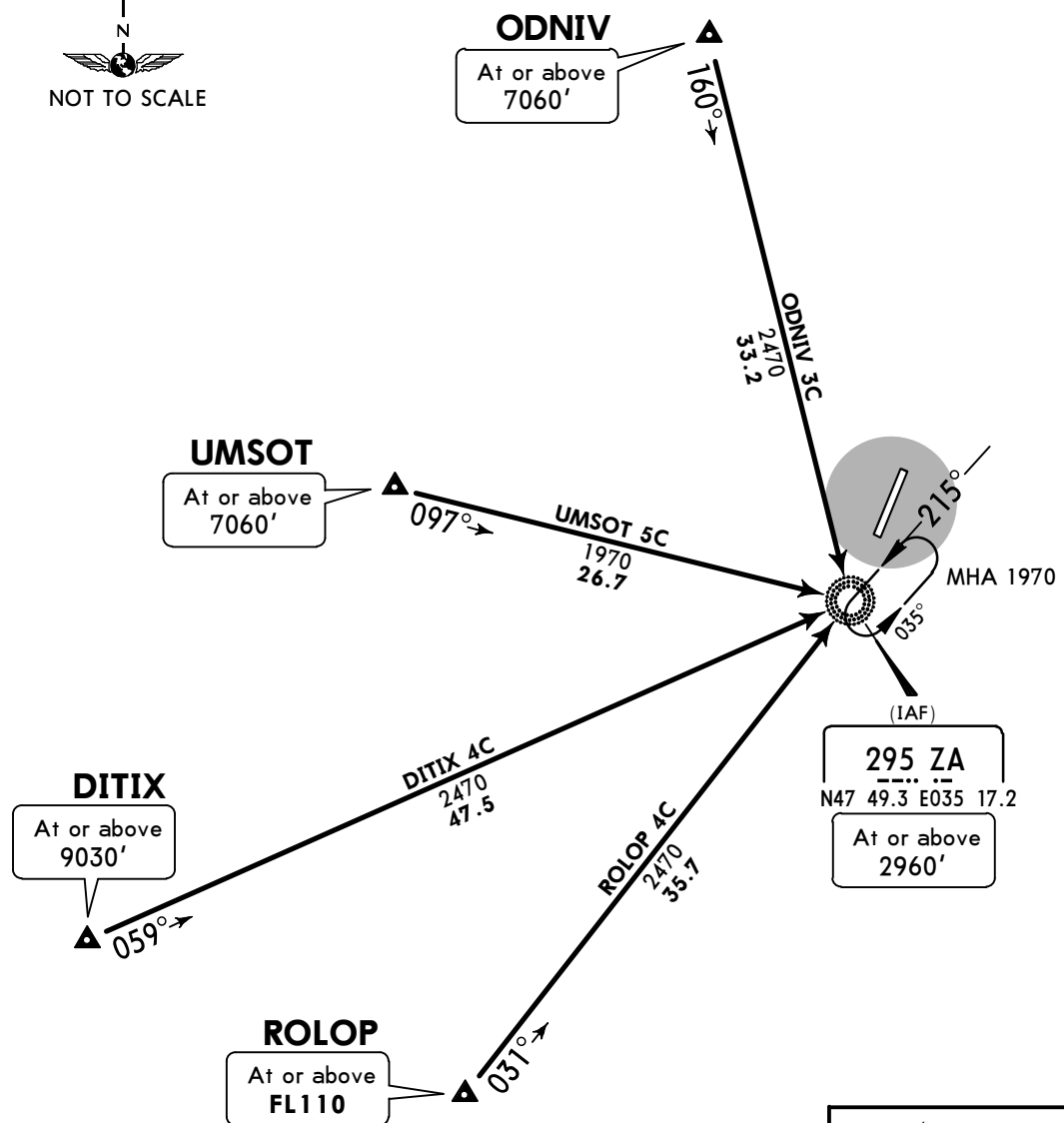
JEPPESEN ZAPORIZHZHIA, UKRAINE
 26 NOV 21 (10-2A) Eff 2 Dec

STAR

Apt Elev **374'**
 Alt Set: hPa
 Trans level: By ATC Trans alt: 10010'
 Due to noise abatement strict adherence to exit patterns by crews is required.



DITIX 4C [DITI4C]
ODNIV 3C [ODNI3C]
ROLOP 4C [ROLO4C]
UMSOT 5C [UMS05C]
ARRIVALS
(RWY 02)



FT/METER CONVERSION	
QNH	
10010'	- 3050m
9030'	- 2750m
7060'	- 2150m
2960'	- 900m
2470'	- 750m
1970'	- 600m

STAR	ROUTING
DITIX 4C	On 059° bearing to ZA NDB.
ODNIV 3C	On 160° bearing to ZA NDB.
ROLOP 4C	On 031° bearing to ZA NDB.
UMSOT 5C	On 097° bearing to ZA NDB.

UKDE/OZH
ZAPORIZHZHIA INTL

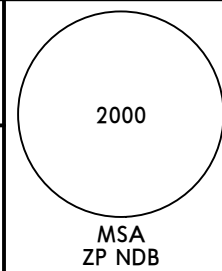
26 NOV 21 **10-2B** **Eff 2 Dec**

JEPPESEN ZAPORIZHZHIA, UKRAINE

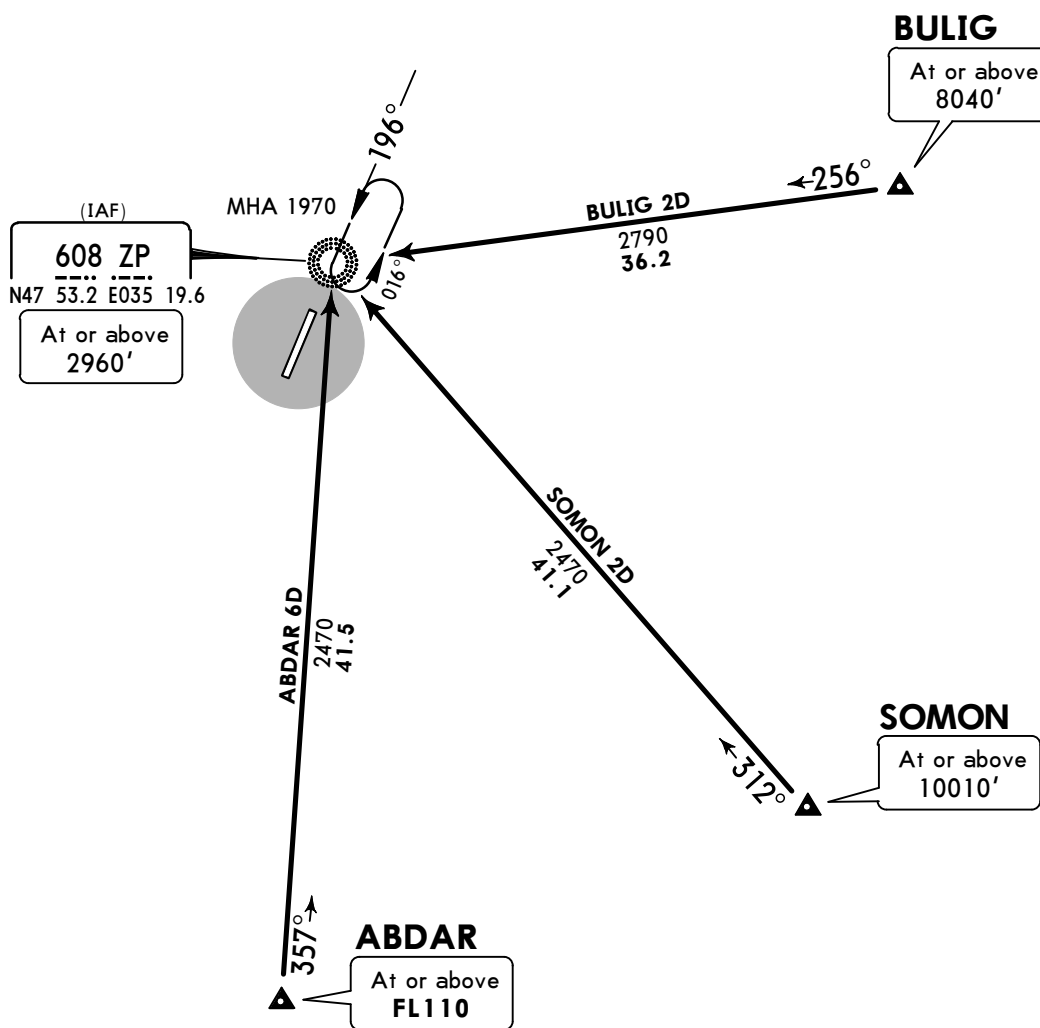
STAR

Apt Elev
374'

Alt Set: hPa
 Trans level: By ATC Trans alt: 10010'
 Due to noise abatement strict adherence to exit patterns by crews
 is required.



ABDAR 6D [ABDA6D]
BULIG 2D [BULI2D]
SOMON 2D [SOMO2D]
ARRIVALS
(RWY 20)



FT/METER CONVERSION	
QNH	
10010'	- 3050m
8040'	- 2450m
2960'	- 900m
2790'	- 850m
2470'	- 750m
1970'	- 600m

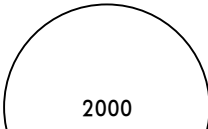
STAR	ROUTING
ABDAR 6D	On 357° bearing to ZP NDB.
BULIG 2D	On 256° bearing to ZP NDB.
SOMON 2D	On 312° bearing to ZP NDB.

UKDE/OZH
ZAPORIZHZHIA INTL

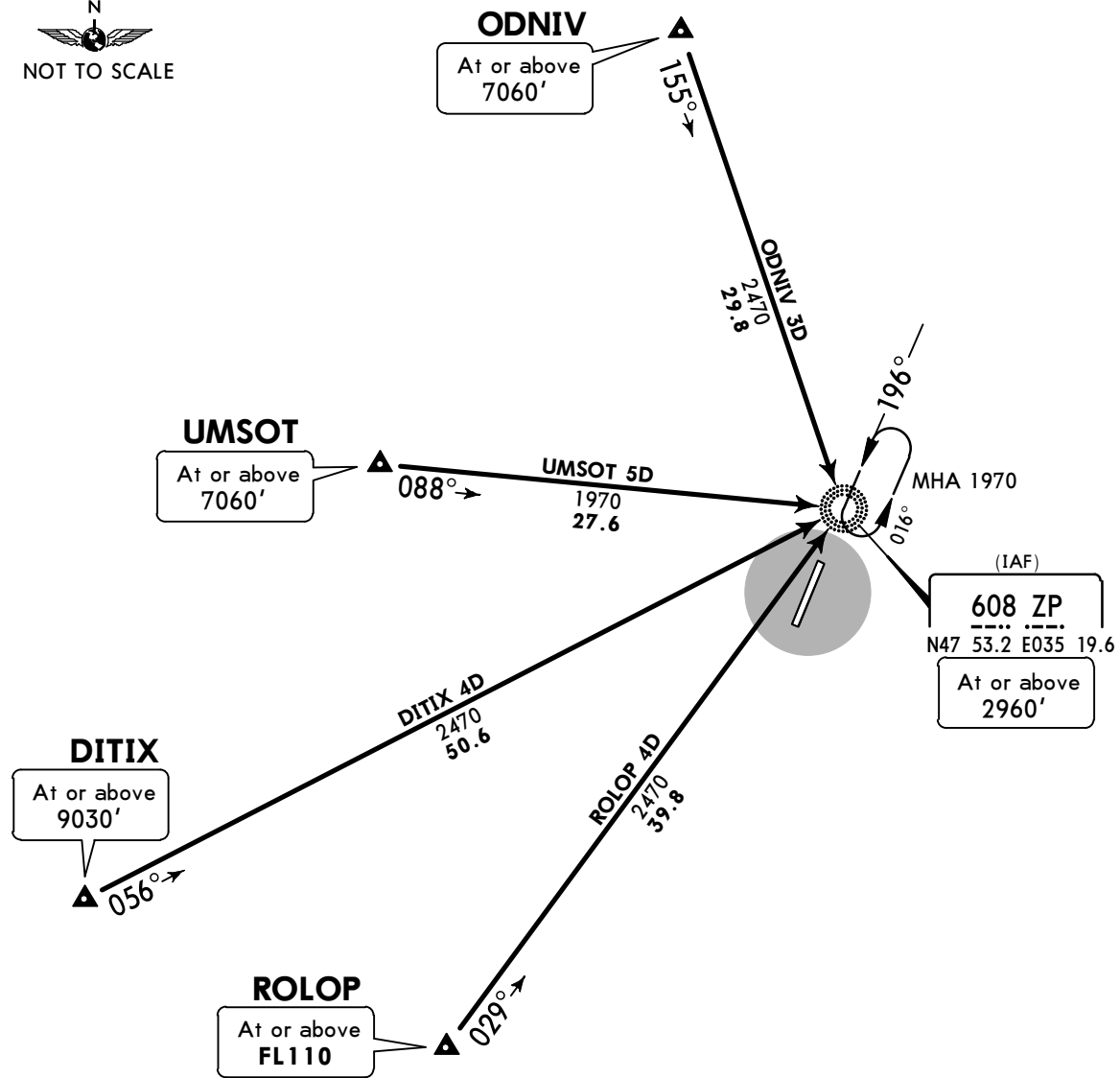
26 NOV 21 **10-2C** Eff 2 Dec

JEPPESEN ZAPORIZHZHIA, UKRAINE

STAR

Apt Elev 374'	Alt Set: hPa Trans level: By ATC Trans alt: 10010' Due to noise abatement strict adherence to exit patterns by crews is required.	 2000 MSA ZP NDB
-------------------------	---	--

DITIX 4D [DITI4D]
ODNIV 3D [ODNI3D]
ROLOP 4D [ROLO4D]
UMSOT 5D [UMSO5D]
ARRIVALS
(RWY 20)



FT/METER CONVERSION	
QNH	
10010'	- 3050m
9030'	- 2750m
7060'	- 2150m
2960'	- 900m
2470'	- 750m
1970'	- 600m

STAR	ROUTING
DITIX 4D	On 056° bearing to ZP NDB.
ODNIV 3D	On 155° bearing to ZP NDB.
ROLOP 4D	On 029° bearing to ZP NDB.
UMSOT 5D	On 088° bearing to ZP NDB.

CHANGES: STAR DNP 2D replaced by ODNIV 3D.

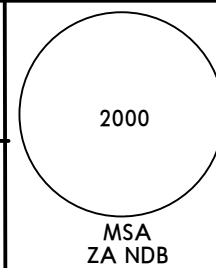
UKDE/OZH
ZAPORIZHZHIA INTL

JEPPESEN ZAPORIZHZHIA, UKRAINE
 26 NOV 21 **10-3** **Eff 2 Dec**

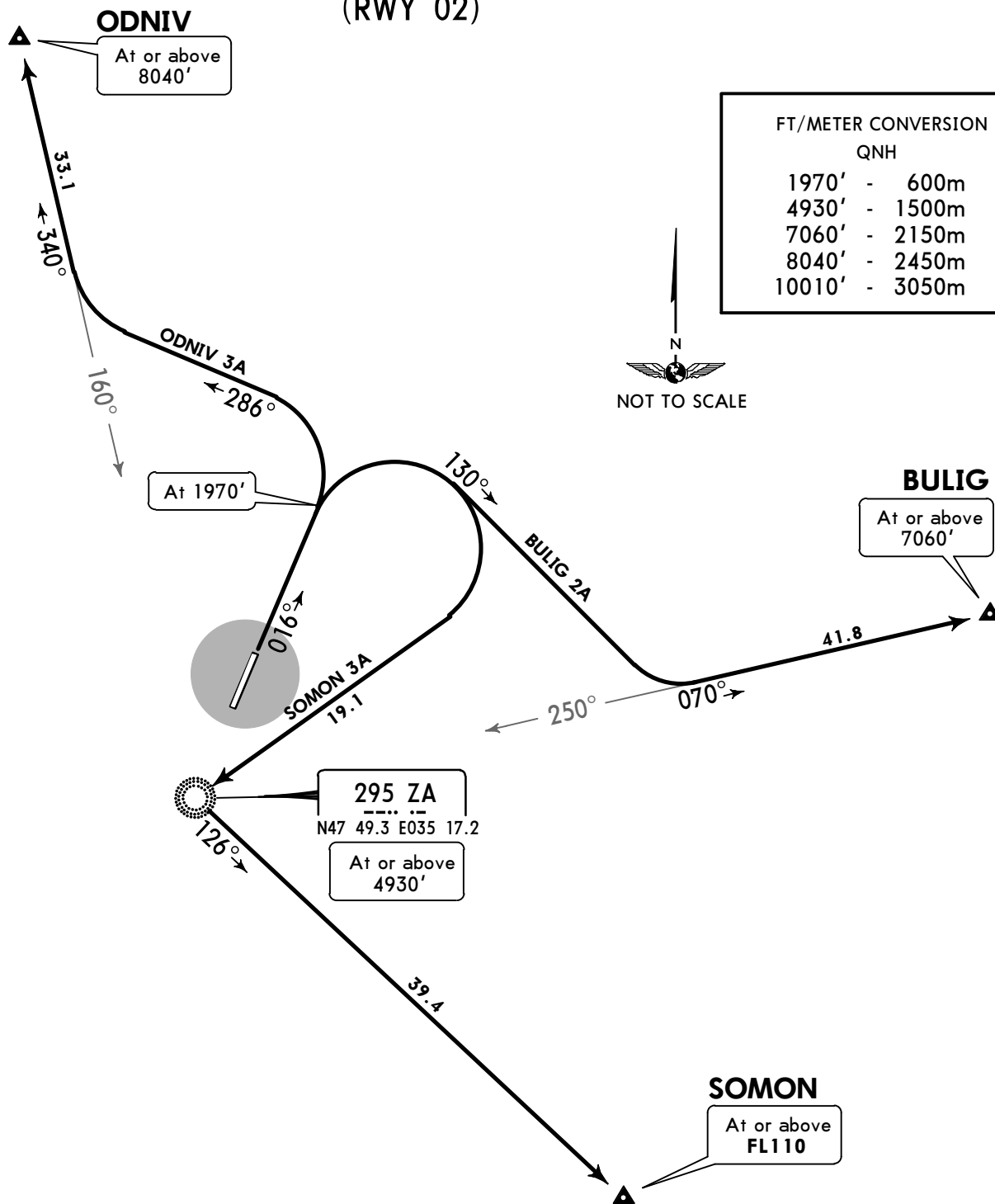
SID

Apt Elev
374'

Trans level: By ATC Trans alt: 10010'
 1. EXPECT close-in obstacles.
 2. Due to noise abatement strict adherence to exit patterns by crews is required.



BULIG 2A [BULI2A]
ODNIV 3A [ODNI3A]
SOMON 3A [SOMO3A]
DEPARTURES
(RWY 02)



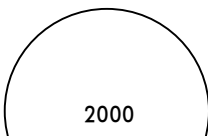
SID	ROUTING
BULIG 2A	Climb on 016° track to 1970', turn RIGHT, 130° track, turn LEFT to intercept 070° bearing from ZA NDB to BULIG.
ODNIV 3A	Climb on 016° track to 1970', turn LEFT, 286° track, turn RIGHT to intercept 340° bearing from ZA NDB to ODNIV.
SOMON 3A	Climb on 016° track to 1970', turn RIGHT to ZA NDB, turn LEFT, 126° bearing from ZA NDB to SOMON.

UKDE/OZH
ZAPORIZHZHIA INTL

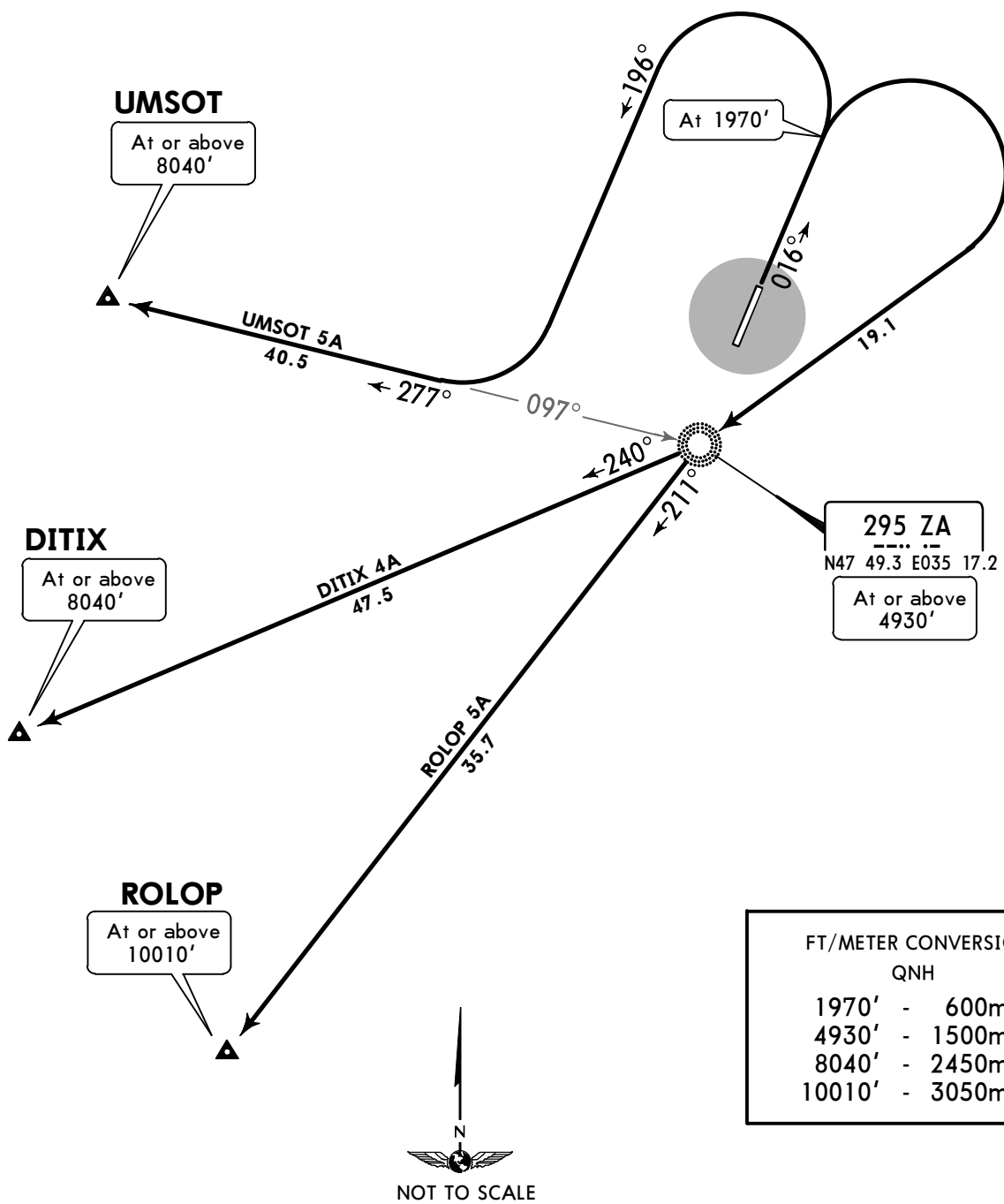
JEPPESEN 26 NOV 21 **(10-3A)** **Eff 2 Dec**

ZAPORIZHZHIA, UKRAINE

SID

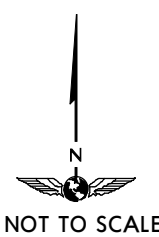
Apt Elev 374'	Trans level: By ATC Trans alt: 10010' 1. EXPECT close-in obstacles. 2. Due to noise abatement strict adherence to exit patterns by crews is required.	 2000 MSA ZA NDB
-------------------------	---	--

DITIX 4A [DITI4A]
ROLOP 5A [ROLO5A]
UMSOT 5A [UMS05A]
DEPARTURES
(RWY 02)



295 ZA
 N47 49.3 E035 17.2
 At or above 4930'

FT/METER CONVERSION	
QNH	
1970'	- 600m
4930'	- 1500m
8040'	- 2450m
10010'	- 3050m



SID	ROUTING
DITIX 4A	Climb on 016° track to 1970', turn RIGHT to ZA NDB, turn RIGHT, 240° bearing from ZA NDB to DITIX.
ROLOP 5A	Climb on 016° track to 1970', turn RIGHT to ZA NDB, turn LEFT, 211° bearing from ZA NDB to ROLOP.
UMSOT 5A	Climb on 016° track to 1970', turn LEFT, track 196°, turn RIGHT to intercept 277° bearing from ZA NDB to UMSOT.

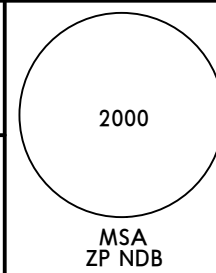
UKDE/OZH
ZAPORIZHZHIA INTL

JEPPESEN ZAPORIZHZHIA, UKRAINE
 26 NOV 21 (10-3B) Eff 2 Dec

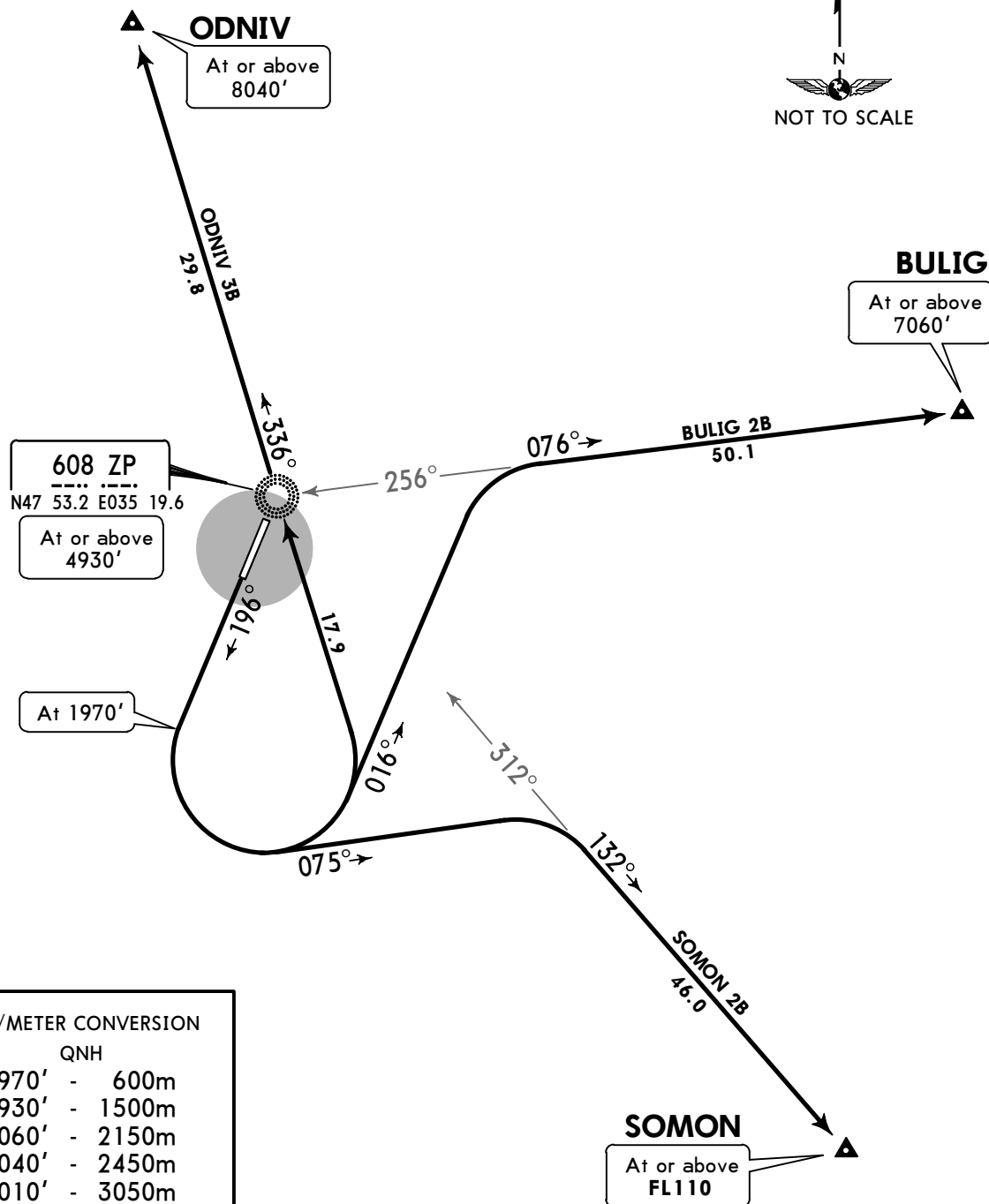
SID

Apt Elev
374'

Trans level: By ATC Trans alt: 10010'
 1. EXPECT close-in obstacles.
 2. Due to noise abatement strict adherence to exit patterns by crews is required.



BULIG 2B [BULI2B]
ODNIV 3B [ODNI3B]
SOMON 2B [SOMO2B]
DEPARTURES
(RWY 20)



FT/METER CONVERSION	
QNH	
1970'	- 600m
4930'	- 1500m
7060'	- 2150m
8040'	- 2450m
10010'	- 3050m

SID	ROUTING
BULIG 2B	Climb on 196° track to 1970', turn LEFT, 016° track, turn RIGHT to intercept 076° bearing from ZP NDB to BULIG.
ODNIV 3B	Climb on 196° track to 1970', turn LEFT to ZP NDB, 336° bearing from ZN NDB to ODNIV.
SOMON 2B	Climb on 196° track to 1970', turn LEFT, 075° track, turn RIGHT to intercept 132° bearing from ZP NDB to SOMON.

UKDE/OZH
ZAPORIZHZHIA INTL

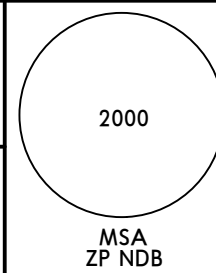
JEPPESEN 26 NOV 21 **10-3C** **Eff 2 Dec**

ZAPORIZHZHIA, UKRAINE

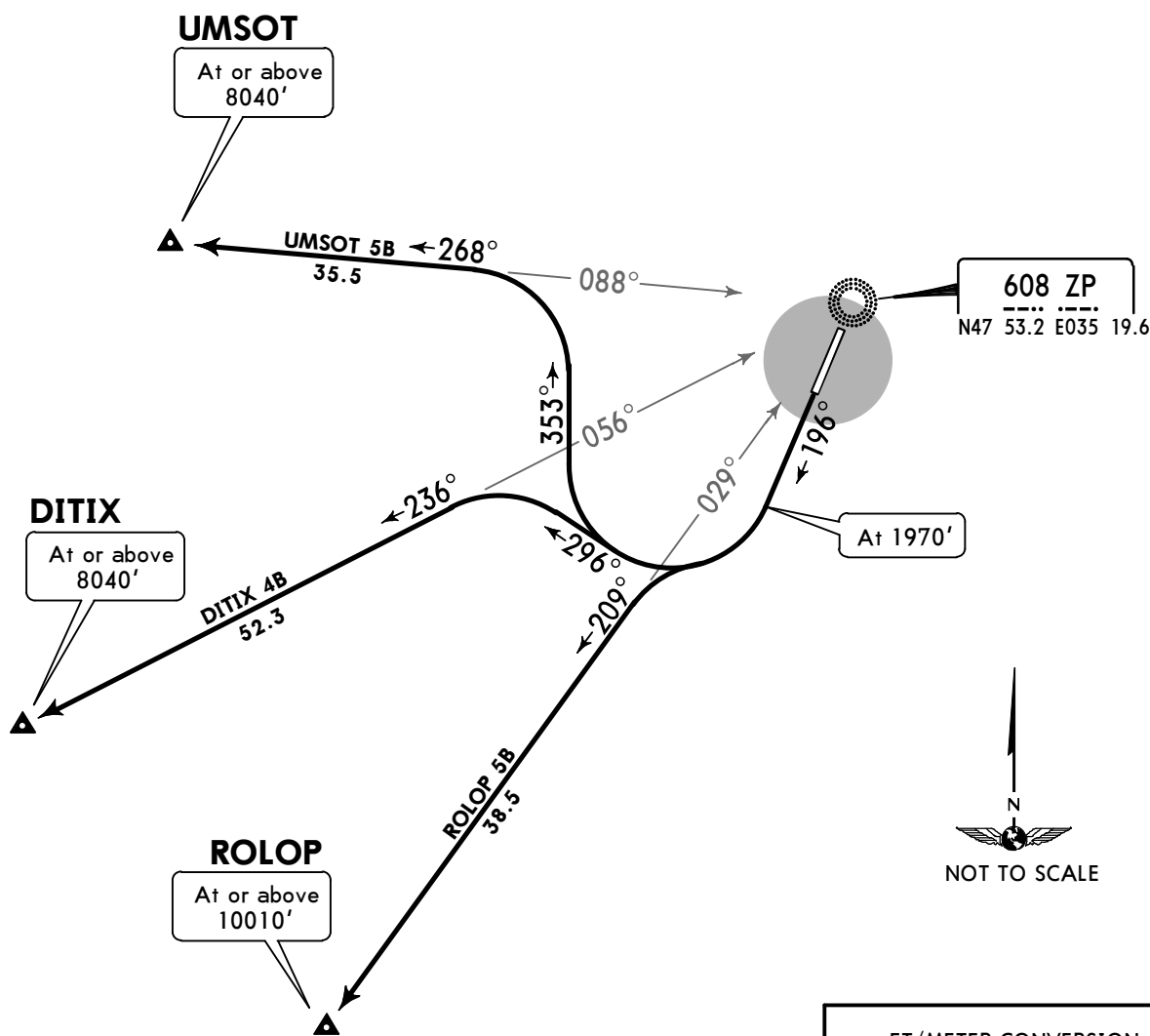
SID

Apt Elev
374'

Trans level: By ATC Trans alt: 10010'
 1. EXPECT close-in obstacles.
 2. Due to noise abatement strict adherence to exit patterns by crews is required.



DITIX 4B [DITI4B]
ROLOP 5B [ROLO5B]
UMSOT 5B [UMSO5B]
DEPARTURES
(RWY 20)



608 ZP
 N47 53.2 E035 19.6



FT/METER CONVERSION	
QNH	
1970'	- 600m
4930'	- 1500m
8040'	- 2450m
10010'	- 3050m

DITIX 4B, UMSOT 5B
 These SIDs require a minimum climb gradient of 7.0% up to 4930'.

Gnd speed-KT	75	100	150	200	250	300
7.0% V/V (fpm)	532	709	1063	1418	1772	2127

SID	ROUTING
DITIX 4B	Climb on 196° track to 1970', turn RIGHT, 296° track, turn LEFT to intercept 236° bearing from ZP NDB to DITIX.
ROLOP 5B	Climb on 196° track to 1970', turn RIGHT to intercept 209° bearing from ZP NDB to ROLOP.
UMSOT 5B	Climb on 196° track to 1970', turn RIGHT, 353° track, turn LEFT to intercept 268° bearing from ZP NDB to UMSOT.

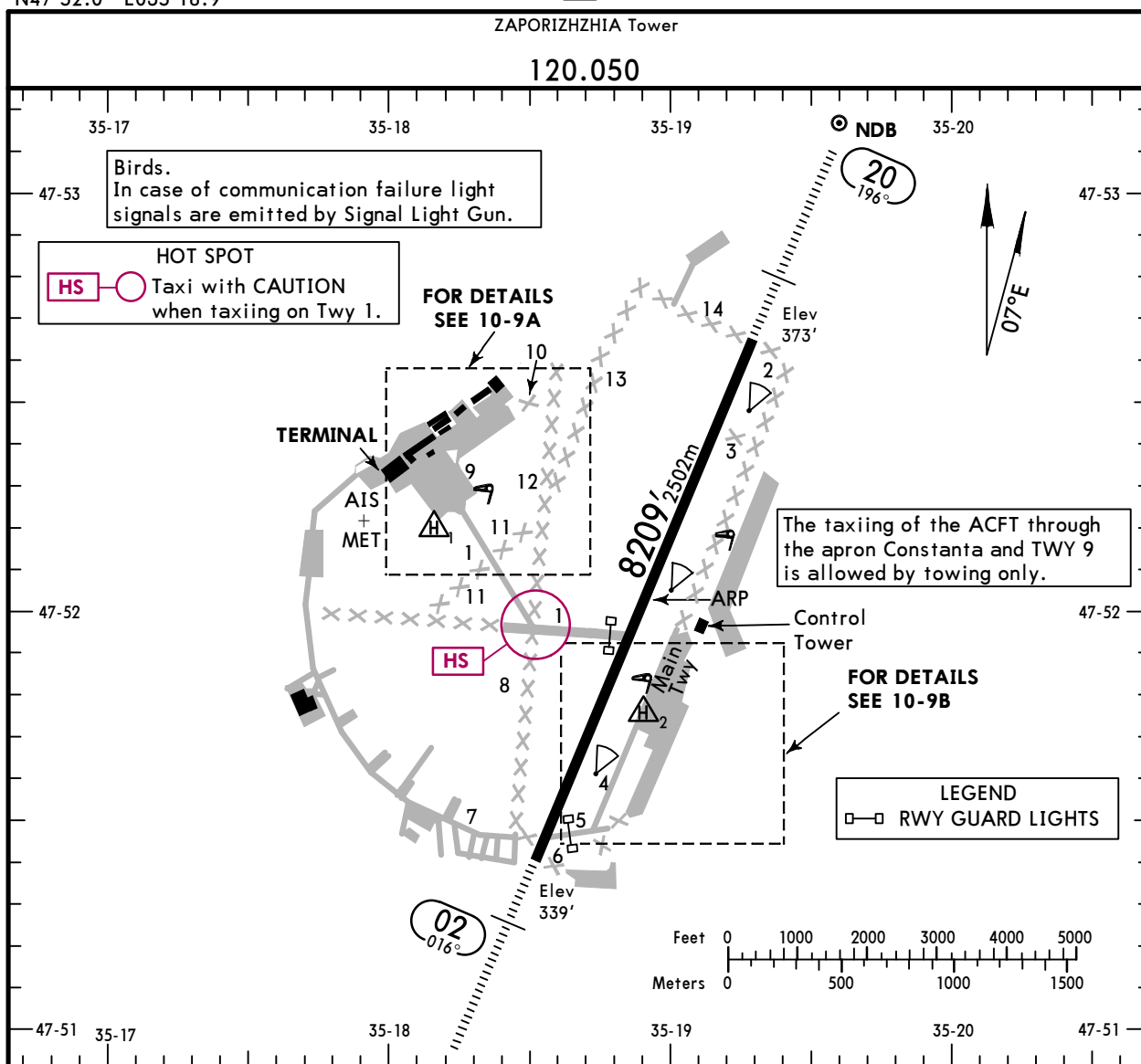
UKDE/OZH

Apt Elev **374'**
N47 52.0 E035 18.9

JEPPESSEN ZAPORIZHZHIA, UKRAINE

1 OCT 21 (10-9) Eff 7 Oct

ZAPORIZHZHIA INTL



ADDITIONAL RUNWAY INFORMATION						
RWY					USABLE LENGTHS	
					Threshold	Glide Slope
02 20	HIRL (60m)	HIALS	PAPI-R (angle 3.0°)	RVR		
	HIRL (60m)	HIALS	PAPI-L (angle 3.0°)	RVR	7108'	2167m
						TAKE-OFF
						WIDTH
						138' 42m

1 TAKE-OFF RUN AVAILABLE

RWY 02:		RWY 20:	
From rwy head	8209' (2502m)	From rwy head	8209' (2502m)
twy 1 int	4724' (1440m)	twy 1 int	3478' (1060m)

For ACFT code C and D 180° turn is allowed for RWY vacation only at the end of RWY at abeam TWY 2, 14 and TWY 5, 6, 7.
Taxiing ACFT via TWY 1 and Large Apron only under Follow-me car instructions.
Taxiing via RWY for line-up is performed via centreline with further Right (Left) turn.
Taxiing via RWY and TWY 1 are performed under the inner engine power and should taxi to/from stands of Large Apron strictly marking.
TWY 2, 3, 6, 7, 8, 10, 11, 12, 13, 14 - for taxiing of the ACFT are inapplicable.

Std TAKE-OFF			
RL & RCLM	RL	RL or RCLM	Adequate Vis Ref
DAY	NIGHT	DAY	DAY NIGHT
R300m		R400m	R/V500m NA

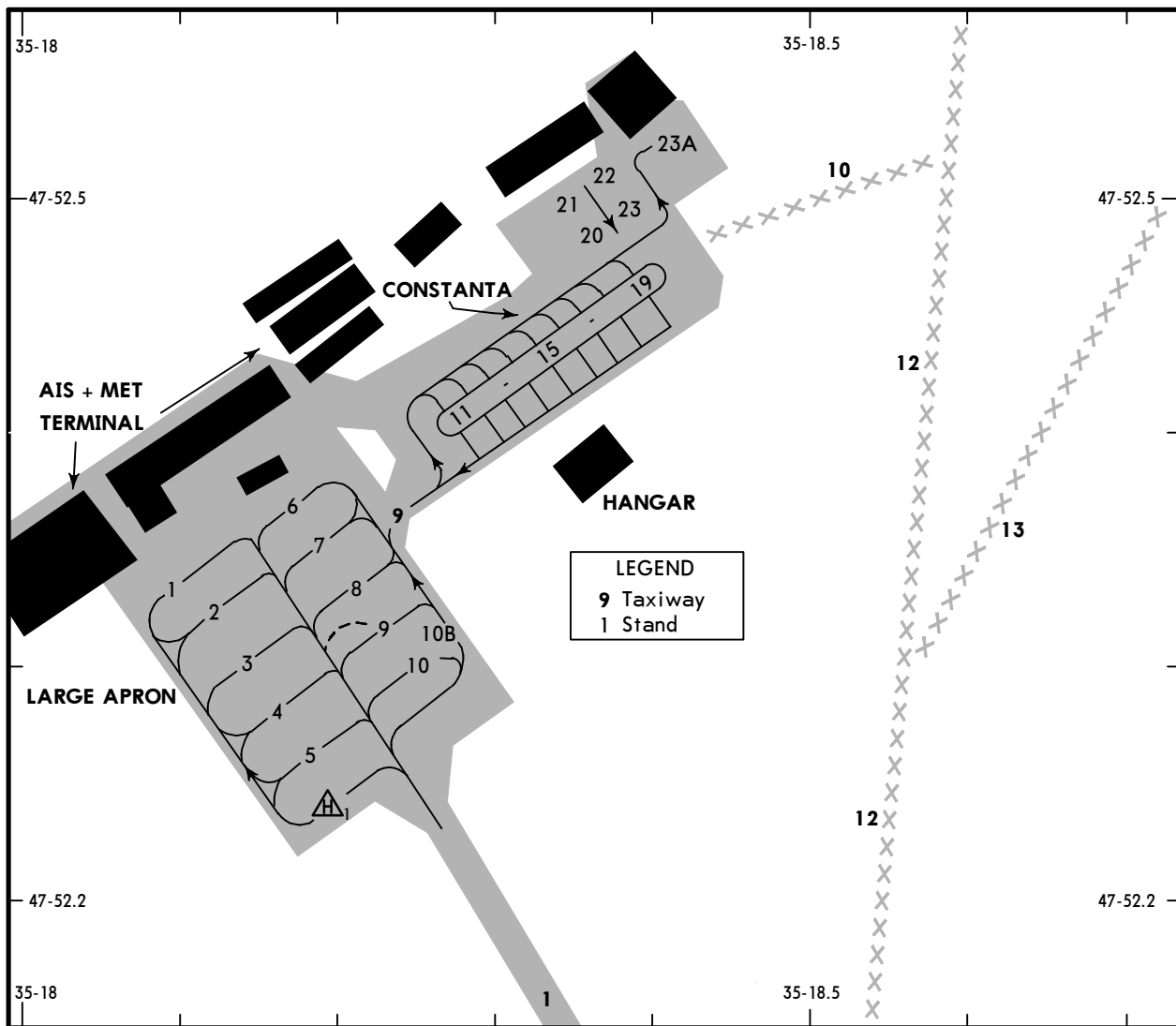
UKDE/OZH



JEPPESEN ZAPORIZHZHIA, UKRAINE

1 OCT 21
Eff 7 Oct (10-9A)

ZAPORIZHZHIA INTL



INS COORDINATES

STAND	COORDINATES	ELEV	STAND	COORDINATES	ELEV
1	N47 52.3 E035 18.1	343'	11	N47 52.4 E035 18.3	355'
2	N47 52.3 E035 18.1	342'	12	N47 52.4 E035 18.3	354'
3	N47 52.3 E035 18.2	342'	13 thru 15	N47 52.4 E035 18.3	352'
4	N47 52.3 E035 18.2	341'	16	N47 52.4 E035 18.4	353'
5	N47 52.3 E035 18.2	343'	17	N47 52.4 E035 18.4	354'
6, 7	N47 52.4 E035 18.2	345'	18	N47 52.5 E035 18.4	354'
8	N47 52.3 E035 18.2	343'	19	N47 52.5 E035 18.4	355'
9	N47 52.3 E035 18.3	345'	20	N47 52.5 E035 18.3	352'
10, 10B	N47 52.3 E035 18.2	344'	21	N47 52.5 E035 18.3	351'
H1	N47 52.2 E035 18.2	342'	22, 23	N47 52.5 E035 18.4	351'
			23A	N47 52.5 E035 18.4	355'

UKDE/OZH

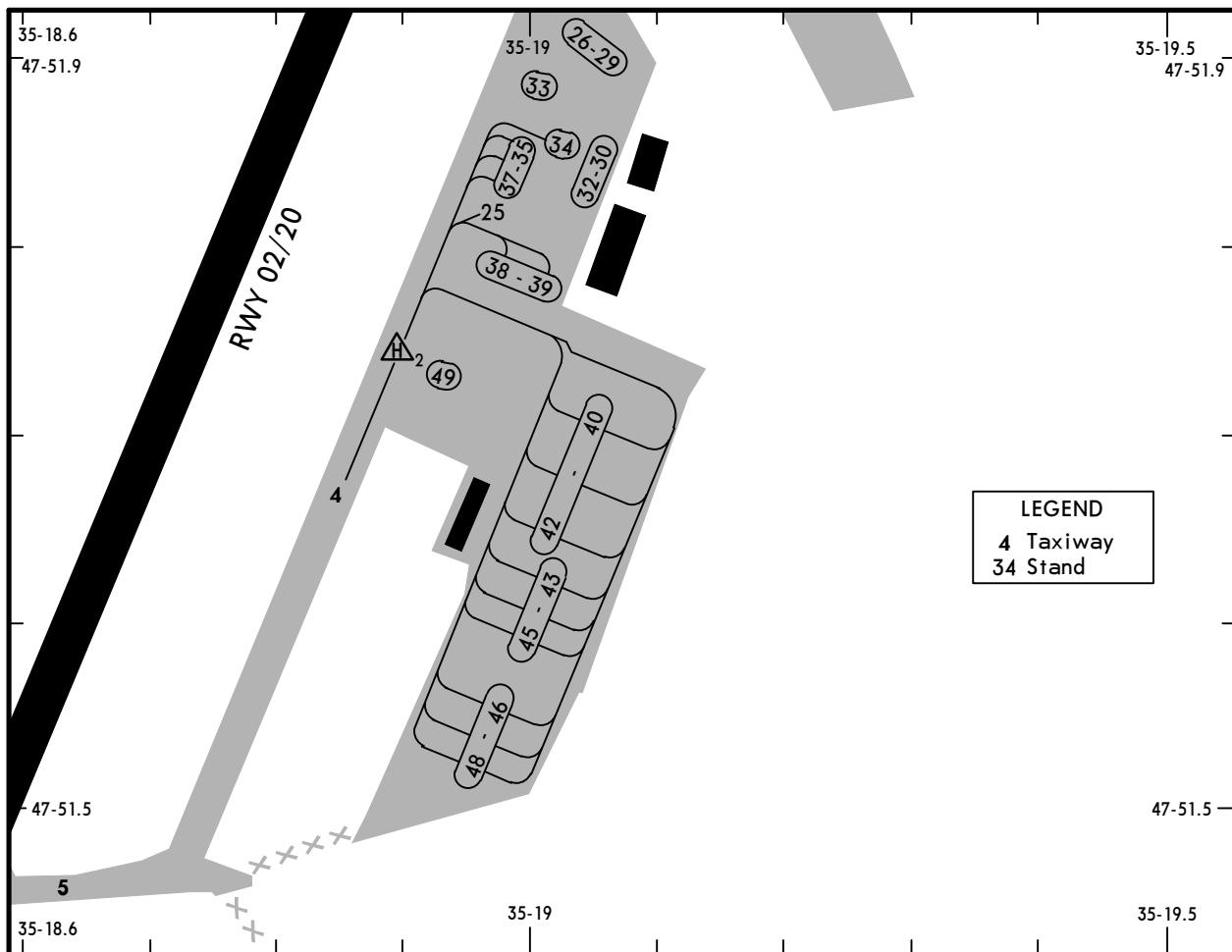


JEPPESEN ZAPORIZHZHIA, UKRAINE

1 OCT 21
Eff 7 Oct

(10-9B)

ZAPORIZHZHIA INTL



INS COORDINATES

STAND	COORDINATES	ELEV
H2	N47 51.8 E035 18.9	355
38	N47 51.8 E035 19.0	357
39	N47 51.8 E035 19.0	356
40	N47 51.8 E035 19.0	354
41	N47 51.7 E035 19.0	352
42	N47 51.7 E035 19.0	350
43	N47 51.7 E035 19.0	347
44	N47 51.7 E035 19.0	344
45	N47 51.6 E035 19.0	342
46	N47 51.6 E035 18.9	339
47	N47 51.6 E035 18.9	337
48	N47 51.6 E035 18.9	338
49	N47 51.7 E035 18.9	355

UKDE/OZH



EASA AIR OPS

3 DEC 21

10-9S

ZAPORIZHZHIA, UKRAINE
ZAPORIZHZHIA INTL

STRAIGHT-IN RWY		A	B	C	D
02	① NDB	730'(391')	730'(391')	730'(391')	730'(391')
	with ZA NDB	R1100m	R1100m	R1100m	R1100m
	ALS out	R1500m	R1500m	R1800m	R1800m
	NDB	730'(391')	730'(391')	730'(391')	730'(391')
	with ZA NDB	R1300m	R1300m	R1500m	R1500m
	ALS out	R2000m	R2000m	R2200m	R2200m
	① NDB	790'(451')	790'(451')	790'(451')	790'(451')
	w/o ZA NDB	R1400m	R1400m	R1400m	R1400m
ALS out	R1500m	R1500m	R2100m	R2100m	
NDB	790'(451')	790'(451')	790'(451')	790'(451')	
w/o ZA NDB	R1600m	R1600m	R1800m	R1800m	
ALS out	R2300m	R2300m	R2500m	R2500m	
20	ILS	573'(200')	573'(200')	573'(200')	583'(210')
	FULL	② R550m	② R550m	② R550m	② R550m
	ALS out	R1200m	R1200m	R1200m	R1200m
	① NDB	890'(517')	890'(517')	890'(517')	890'(517')
		R1500m	R1500m	R1600m	R1600m
	ALS out	R1500m	R1500m	R2400m	R2400m
	NDB	890'(517')	890'(517')	890'(517')	890'(517')
		R1800m	R1800m	R2000m	R2000m
ALS out	R2600m	R2600m	R2800m	R2800m	

① Continuous Descent Final Approach.

② R750m when a Flight Director or Autopilot or HUD to DA is not used.

CIRCLE-TO-LAND	100 KT	135 KT	180 KT	205 KT
After NDB 02	840'(466')	880'(506')	1130'(756')	1150'(776')
After ILS 20	780'(406')	880'(506')	1120'(746')	1150'(776')
After NDB 20	890'(516')	890'(516')	1130'(756')	1140'(766')
	③ V1500m	③ V1600m	③ V2400m	V3600m

③ or higher straight-in minimums.

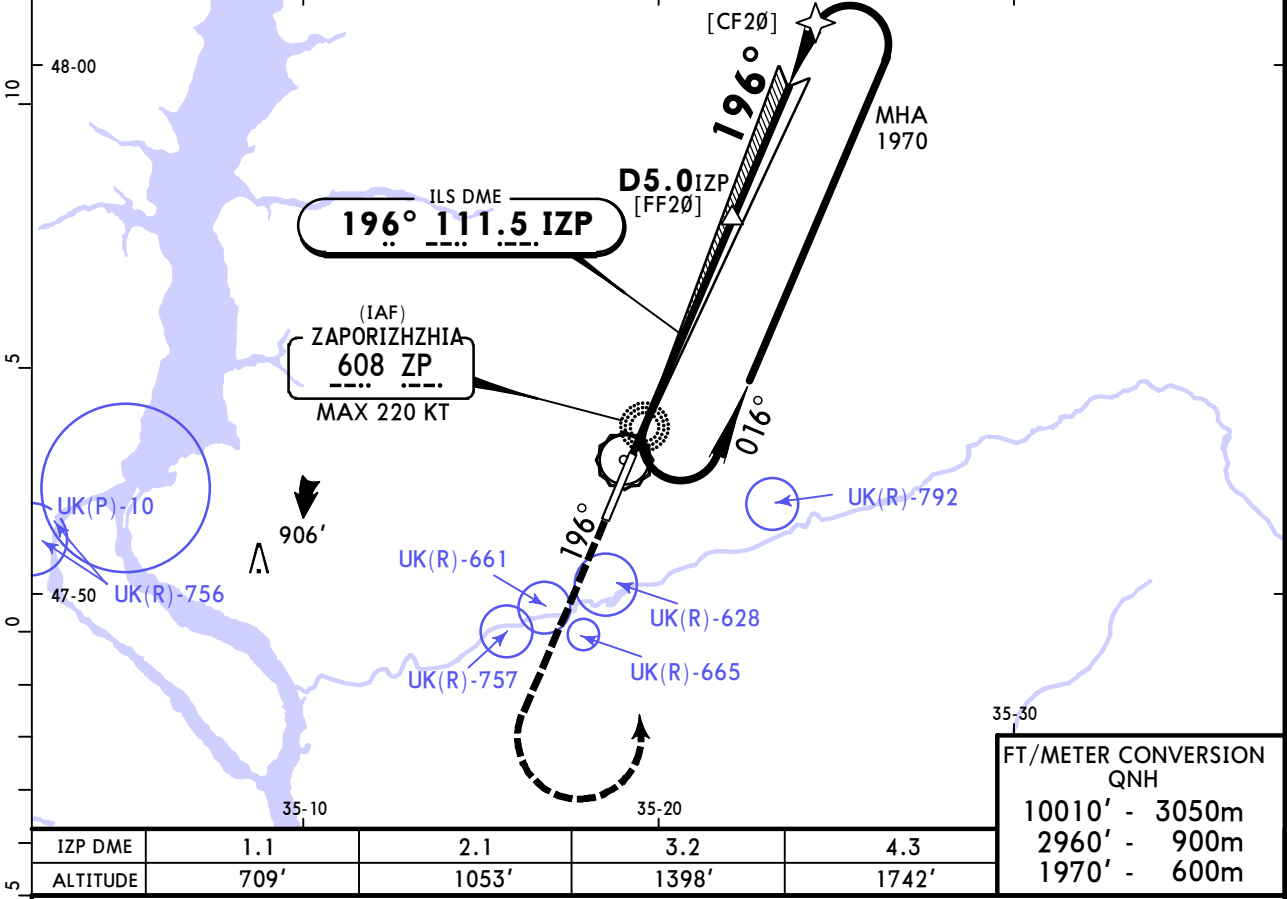
TAKE-OFF

Low Visibility Take-off		RL or RCLM	RL	Adequate Vis Ref	
RL & RCLM	RL			DAY	NIGHT
DAY	NIGHT	DAY	NIGHT	DAY	NIGHT
R300m		R/V400m		R/V500m	NA

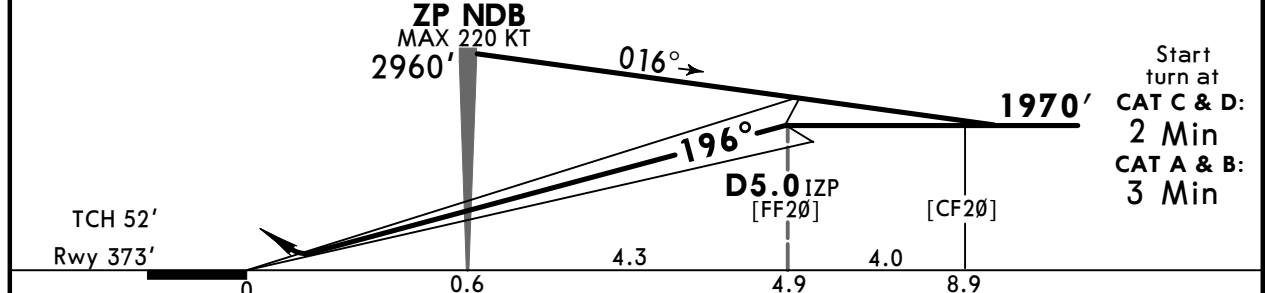
UKDE/OZH ZAPORIZHZHIA INTL

JEPPESEN ZAPORIZHZHIA, UKRAINE 1 OCT 21 (11-1) Eff 7 Oct ILS Rwy 20

ZAPORIZHZHIA Radar (APP) 119.2			ZAPORIZHZHIA Tower 120.050		
LOC IZP 111.5	Final Apch Crs 196°	D5.0 IZP 1970' (1597')	ILS DA(H) Refer to Minimums	Apt Elev 374' Rwy 373'	2000 MSA ZP NDB
MISSED APCH: Climb on 196° to 1970', then turn LEFT climbing to 2960' to ZP NDB, then according to chart.					
Alt Set: hPa (MM on req)		Rwy Elev: 14 hPa	Trans level: By ATC		Trans alt: 10010'
DME required.					



FT/METER CONVERSION QNH	
10010'	3050m
2960'	900m
1970'	600m



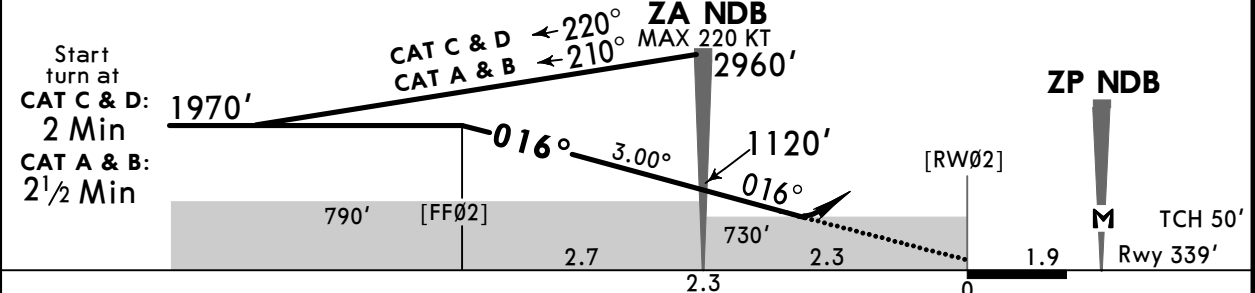
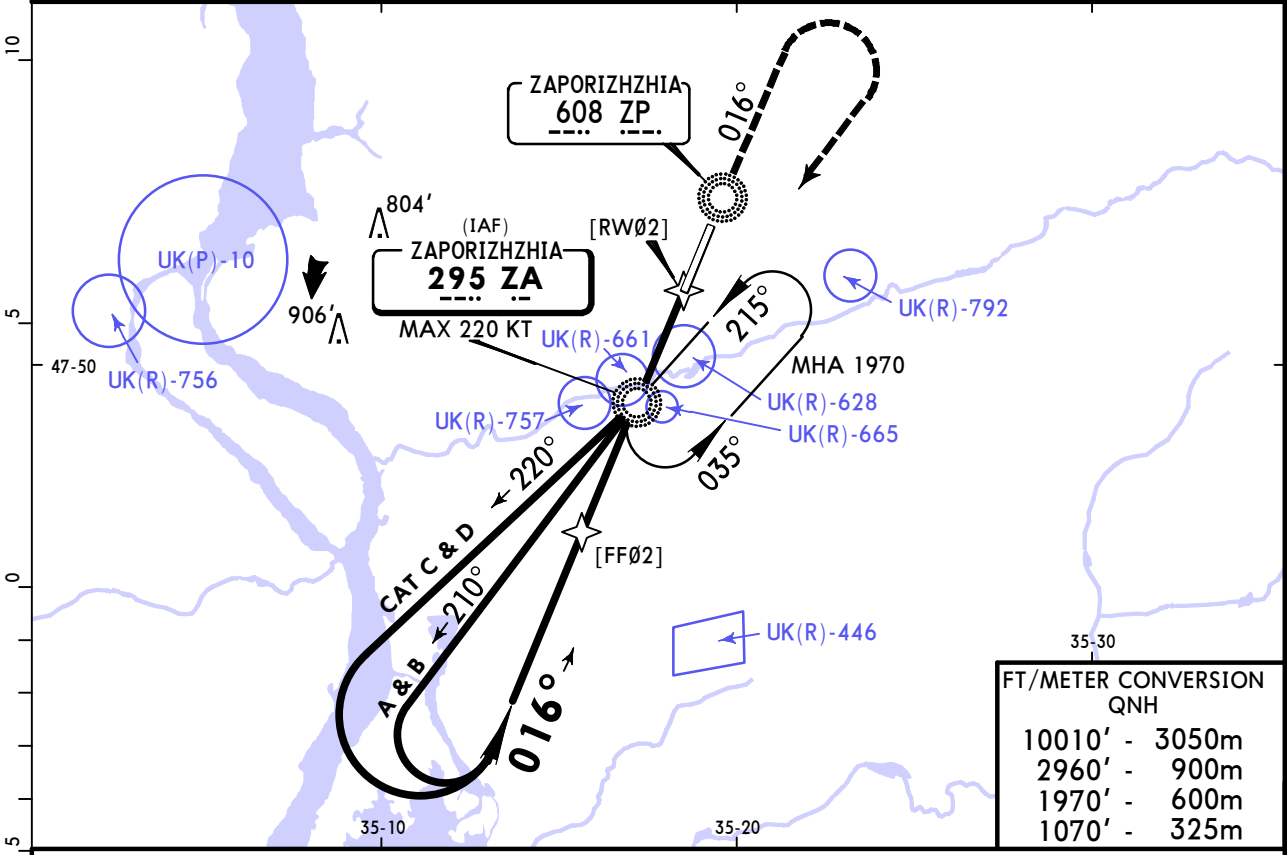
HIALS		1970'	on	196°
PAPI				

Std		STRAIGHT-IN LANDING ILS		CIRCLE-TO-LAND		
		DA(H) ABC: 573' (200') D: 583' (210')				
		FULL		ALS out		
A		R550m	R1200m	Max Kts	MDA(H)	
B				100	780'(406')	V1500m
C				135	880'(506')	V1600m
D				180	1120'(746')	V2400m
				205	1150'(776')	V3600m
R750m when a Flight Director or Autopilot or HUD to DA is not used.						

UKDE/OZH ZAPORIZHZHIA INTL

JEPPESEN ZAPORIZHZHIA, UKRAINE 1 OCT 21 (16-1) Eff 7 Oct NDB Rwy 02

ZAPORIZHZHIA Radar (APP) 119.2			ZAPORIZHZHIA Tower 120.050		
NDB ZA 295	Final Apch Crs 016°	ZA NDB 1120' (781')	DA/MDA(H) (CONDITIONAL) 730' (391')	Apt Elev 374'	2000 MSA ZA NDB
MISSED APCH: Climb on 016° to 1970', then turn RIGHT climbing to 2960' to ZA NDB, then according to chart.					
Alt Set: hPa (MM on req)		Rwy Elev: 12 hPa	Trans level: By ATC		Trans alt: 10010'



Gnd speed-Kts	70	90	100	120	140	160	HIALS PAPI 1970' ↑ on 016°
Descent Angle 3.00°	372	478	531	637	743	849	
MAP at ZP NDB							

Timing not authorized for defining the MAP.

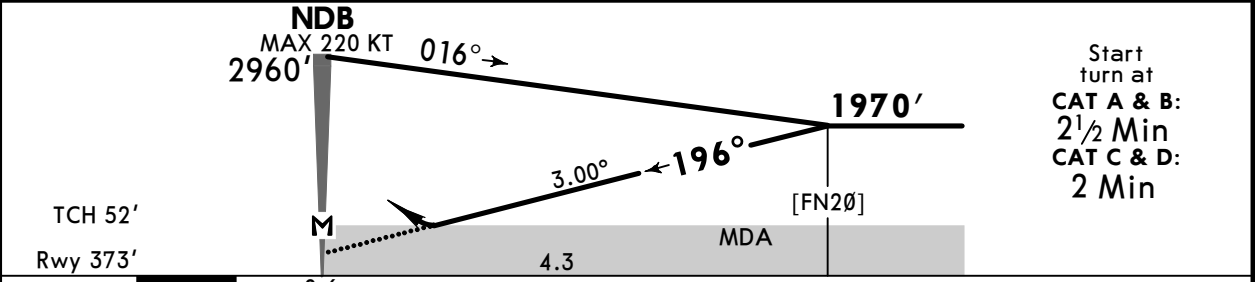
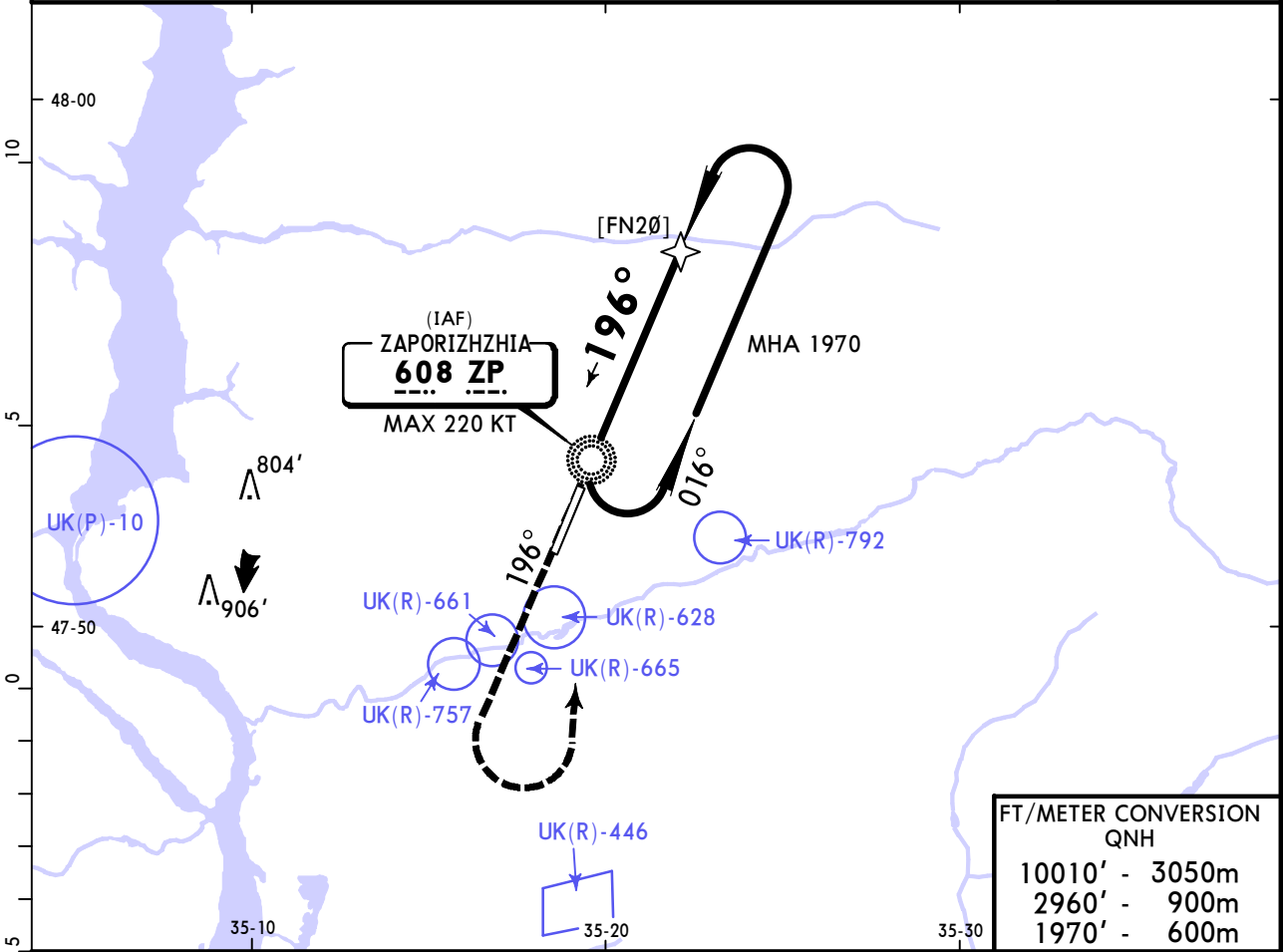
PANS OPS	STRAIGHT-IN LANDING		CIRCLE-TO-LAND	
	CDFA with ZA NDB DA/MDA(H) 730' (391')	CDFA w/o ZA NDB DA/MDA(H) 790' (451')	CDFA with ZA NDB DA/MDA(H) 730' (391')	CDFA w/o ZA NDB DA/MDA(H) 790' (451')
A	ALS out	ALS out	ALS out	ALS out
B	R1500m	R1500m	R1500m	R1500m
C	R1100m	R1400m	R1100m	R2100m
D	R1800m	R1400m	R1100m	R2100m
			Max Kts	MDA(H)
			100	840' (466') V1500m
			135	880' (506') V1600m
			180	1130' (756') V2400m
			205	1150' (776') V3600m

DA VNAV DA(H) in lieu of MDA(H) depends on operator policy.

UKDE/OZH ZAPORIZHZHIA INTL

JEPPESEN ZAPORIZHZHIA, UKRAINE
1 OCT 21 (16-2) **Eff 7 Oct** **NDB Rwy 20**

ZAPORIZHZHIA Radar (APP)			ZAPORIZHZHIA Tower		
119.2			120.050		
NDB ZP 608	Final Apch Crs 196°	No FAF	DA/MDA(H) 890' (517')	Apt Elev 374'	2000
MISSED APCH: Climb on 196° to 1970', then turn LEFT climbing 2960' to NDB, then according to chart.				Rwy 373'	
Alt Set: hPa (MM on req)		Rwy Elev: 14 hPa	Trans level: By ATC	Trans alt: 10010'	MSA ZP NDB



Gnd speed-Kts	70	90	100	120	140	160	HIALS PAPI 1970' on 196°
Descent Angle 3.00°	372	478	531	637	743	849	
MAP at NDB							

Timing not authorized for defining the MAP.

PAINS OPS	Std STRAIGHT-IN LANDING		CIRCLE-TO-LAND		
	CDFA				
	DA/MDA(H) 890' (517')		ALS out		
	A	R1500m		Max Kts 100	MDA(H) 890' (516') 2 V1500m
	B	R1500m		135	890' (516') 2 V1600m
C	R1600m	R2400m	180	1130' (756') V2400m	
D	R1600m	R2400m	205	1140' (766') V3600m	

1 VNAV DA(H) in lieu of MDA(H) depends on operator policy. **2** or higher straight-in minimums.
CHANGES: Restricted areas. © JEPPESEN, 2017, 2021. ALL RIGHTS RESERVED.

Chart changes since cycle 04-2025

ADD = added chart, REV = revised chart, DEL = deleted chart.

ACT	PROCEDURE IDENT	INDEX	REV DATE	EFF DATE
ZAPORIZHZHIA, (ZAPORIZHZHIA INTL - UKDE)				

TERMINAL CHART CHANGE NOTICES

No Chart Change Notices for Airport UKDE