

List of pages in this Trip Kit

Trip Kit Index

Airport Information For UKHP

Terminal Charts For UKHP

Revision Letter For Cycle 05-2025

Change Notices

Notebook

General Information

Location: POLTAVA UKR
ICAO/IATA: UKHP / PLV
Lat/Long: N49° 34.17', E034° 23.65'
Elevation: 505 ft

Airport Use: Public
Daylight Savings: Observed
UTC Conversion: -2:00 = UTC
Magnetic Variation: 7.0° E

Fuel Types: Jet A-1
Customs: Yes
Airport Type: IFR
Landing Fee: Yes
Control Tower: No
Jet Start Unit: No
LLWS Alert: No
Beacon: No

Sunrise: 0149 Z
Sunset: 1729 Z

Runway Information

Runway: 09
Length x Width: 8366 ft x 138 ft
Surface Type: concrete
TDZ-Elev: 501 ft
Lighting: Edge

Runway: 27
Length x Width: 8366 ft x 138 ft
Surface Type: concrete
TDZ-Elev: 505 ft
Lighting: Edge

Communication Information

Poltava Information: 120.600 AFIS

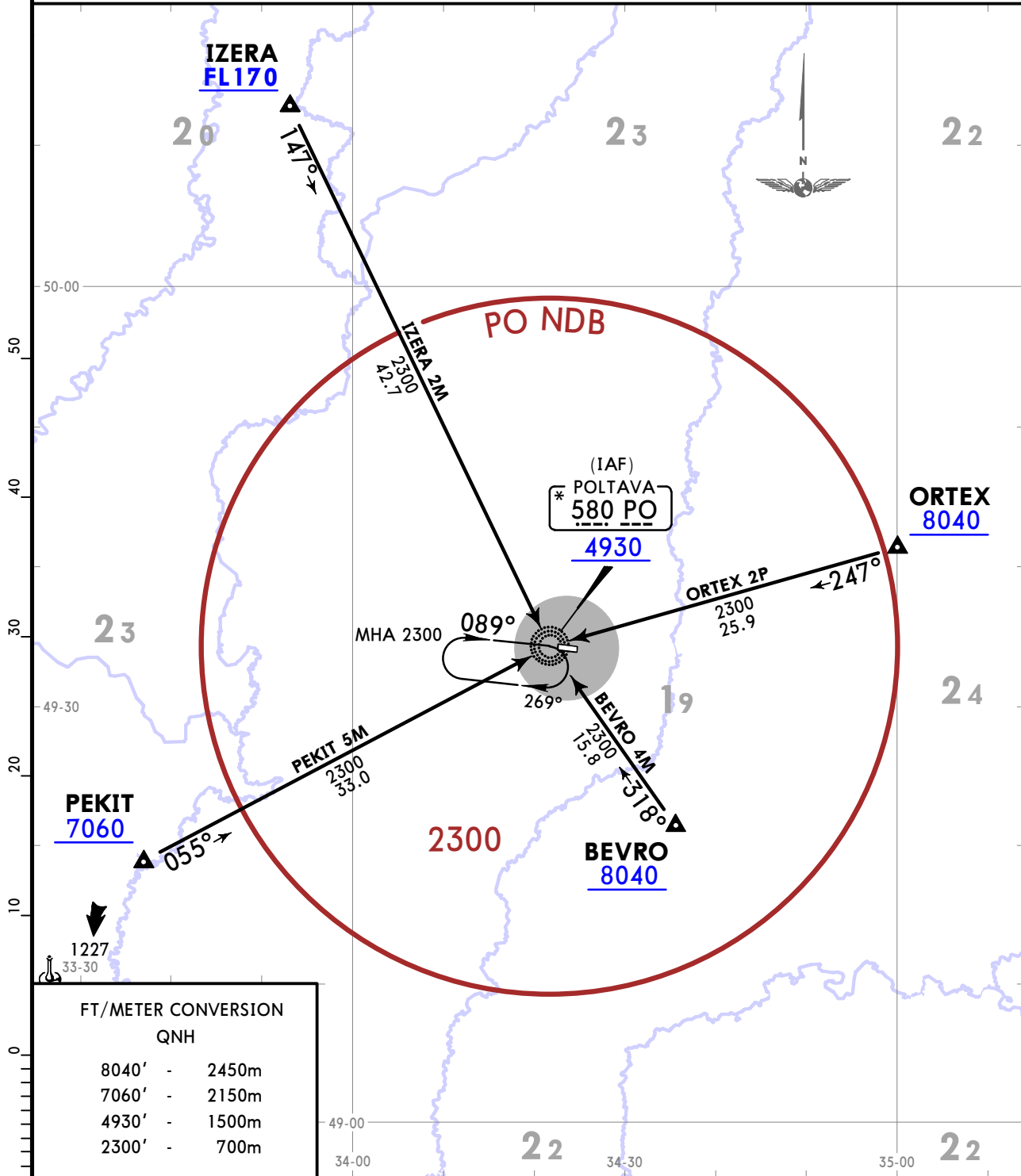
UKHP/PLV
SUPRUNIVKA INTL

JEPPESEN
 16 APR 21 **10-2** **Eff 22 Apr**

POLTAVA, UKRAINE
STAR

Apt Elev 505	Alt Set: hPa (MM on request) Trans level: By ATC
------------------------	---

BEVRO 4M [BEVR4M]
IZERA 2M [IZER2M]
ORTEX 2P [ORTE2P]
PEKIT 5M [PEKI5M]
ARRIVALS
(RWY 09)



STAR	ROUTING
BEVRO 4M	On 318° bearing to PO NDB.
IZERA 2M	On 147° bearing to PO NDB.
ORTEX 2P	On 247° bearing to PO NDB.
PEKIT 5M	On 055° bearing to PO NDB.

CHANGES: STARS renumbered, crossing over PO NDB revised.

UKHP/PLV
SUPRUNIVKA INTL



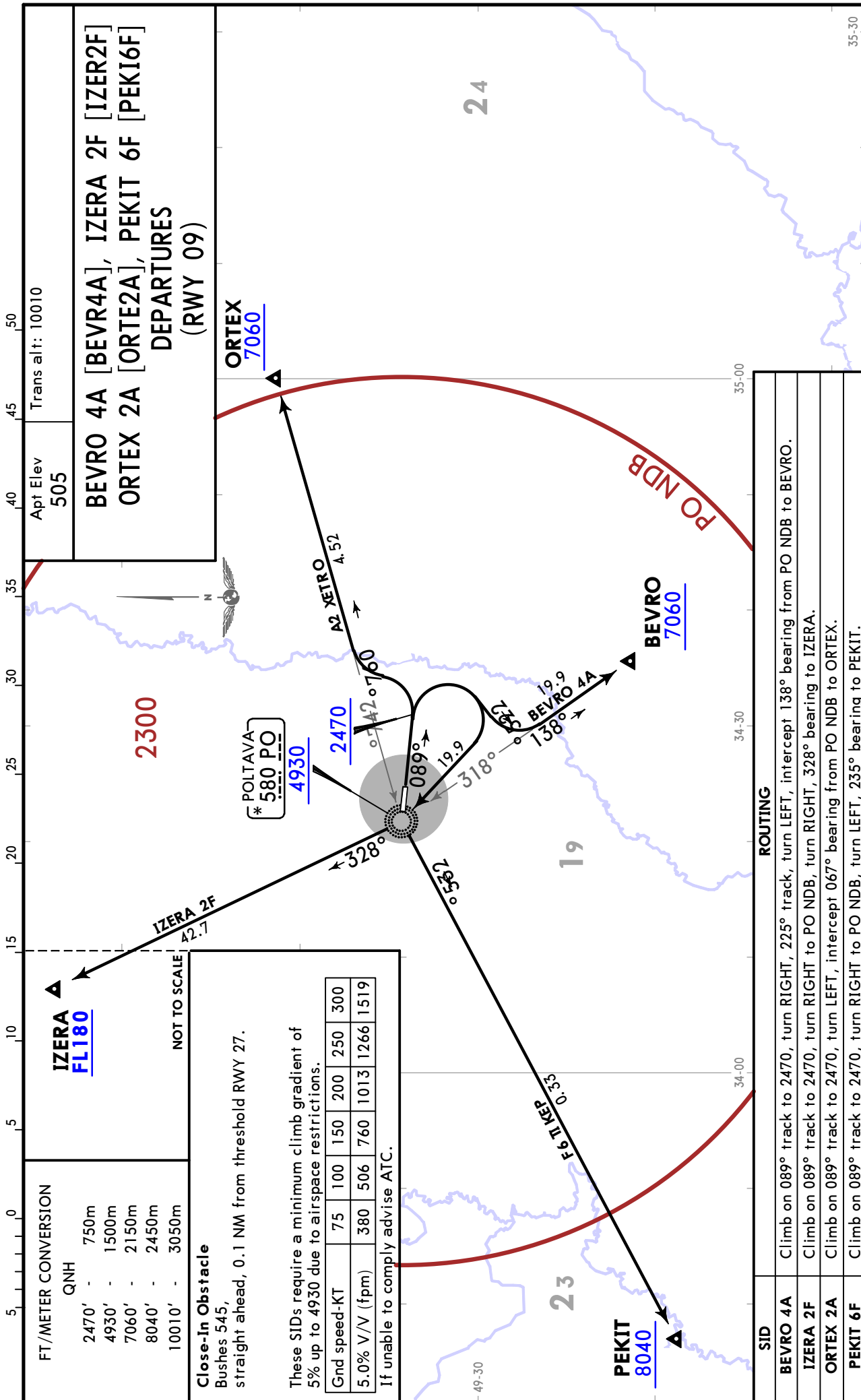
POLTAVA, UKRAINE

16 APR 21

10-3

Eff 22 Apr

SID



UKHP/PLV
SUPRUNIVKA INTL



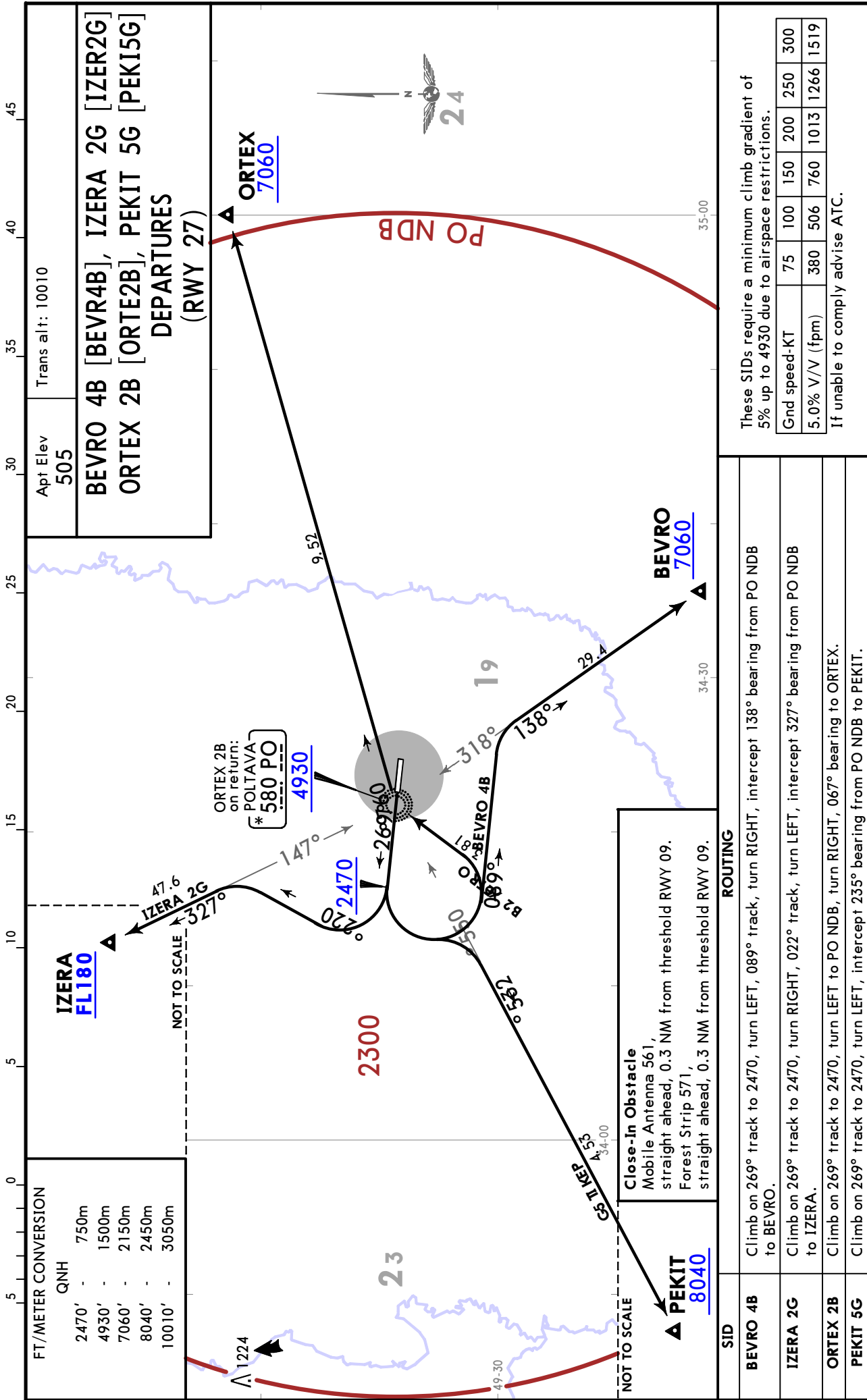
POLTAVA, UKRAINE

16 APR 21

10-3A

Eff 22 Apr

SID



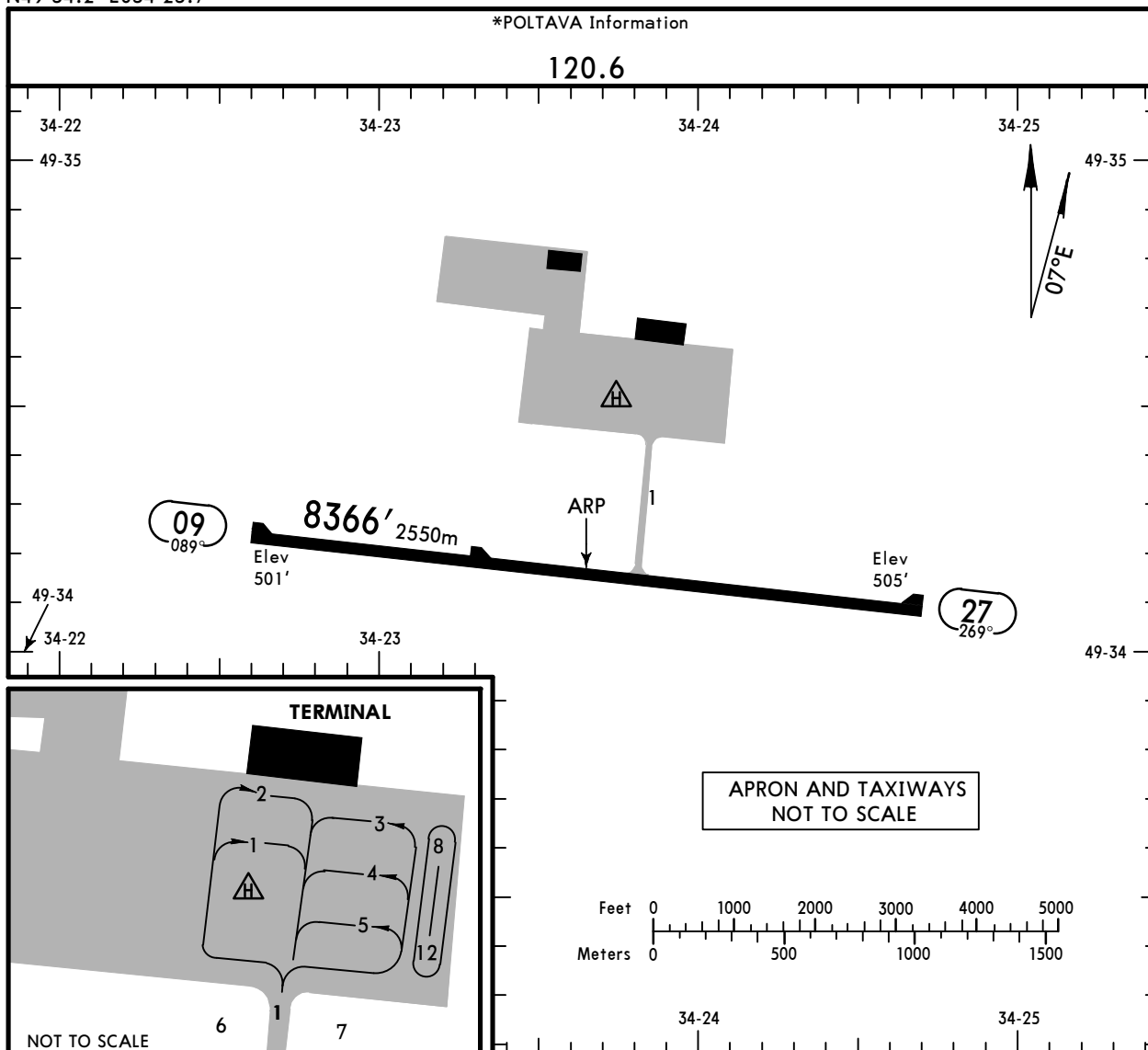
CHANGES: SIDs renumbered, climb gradient established.

© JEPPesen, 2021. ALL RIGHTS RESERVED.

UKHP
 Apt Elev **505'**
 N49 34.2 E034 23.7

JEPPESEN
 9 APR 21 **(10-9)** Eff 22 Apr

POLTAVA, UKRAINE
SUPRUNIVKA INTL



ADDITIONAL RUNWAY INFORMATION

RWY	USABLE LENGTHS	LANDING BEYOND		TAKE-OFF	WIDTH
		Threshold	Glide Slope		
09 27	RL (60m)			1	138' 42m

1 TAKE-OFF RUN AVAILABLE

RWY 09:

From rwy head 8366' (2550m)
 twy 1 int 3451' (1052m)

RWY 27:

From rwy head 8366' (2550m)
 twy 1 int 4915' (1498m)

JAR-OPS

TAKE-OFF 1

	All Rwys		
	LVP must be in force	RCLM (DAY only) or RL	NIL (DAY only)
A	250m	400m	500m
B	250m	400m	500m
C	250m	400m	500m
D	300m	400m	500m

1 Operators applying U.S. Ops Specs: CL required below 300m.

UKHP



Standard

9 APR 21

10-9S

Eff 22 Apr

**POLTAVA, UKRAINE
SUPRŪNIVKA INTL**

STRAIGHT-IN RWY		A	B	C	D
09	NDB ①	940'(435') R1500m	940'(435') R1500m	940'(435') R2000m	940'(435') R2000m
	NDB	940'(435') R2200m	940'(435') R2200m	940'(435') R2400m	940'(435') R2400m
27	NDB ①	1170'(665') R1500m	1170'(665') R1500m	1170'(665') R2400m	1170'(665') R2400m
	NDB	1170'(665') R3300m	1170'(665') R3300m	1170'(665') R3500m	1170'(665') R3500m

① Continuous Descent Final Approach.

CIRCLE-TO-LAND ②	100 KT	135 KT	180 KT	205 KT
After apch to rwy 09	970'(465')	1010'(505')	1170'(665')	1210'(705')
After apch to rwy 27	1170'(665') V1500m ③	1170'(665') V1600m ③	1170'(665') V2400m ③	1210'(705') V3600m

② Not authorized North of airport.

③ or higher minimums of preceding straight-in approach.

TAKE-OFF

	Low Visibility Take-off		
	Day: RL & RCLM Night: RL	Day: RL or RCLM Night: RL	Adequate vis ref (Day only)
A	R300m	400m	500m
B			
C			
D			

UKHP/PLV
SUPRUNIVKA INTL

JEPPESEN
9 APR 21 **16-1** Eff 22 Apr

POLTAVA, UKRAINE
NDB Rwy 09

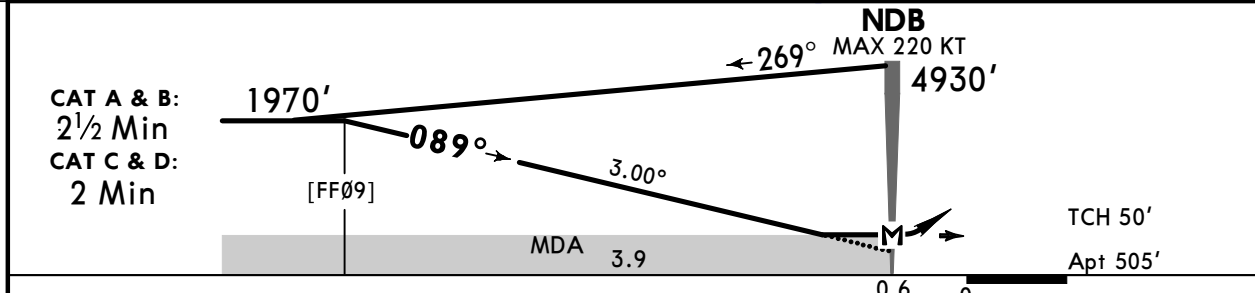
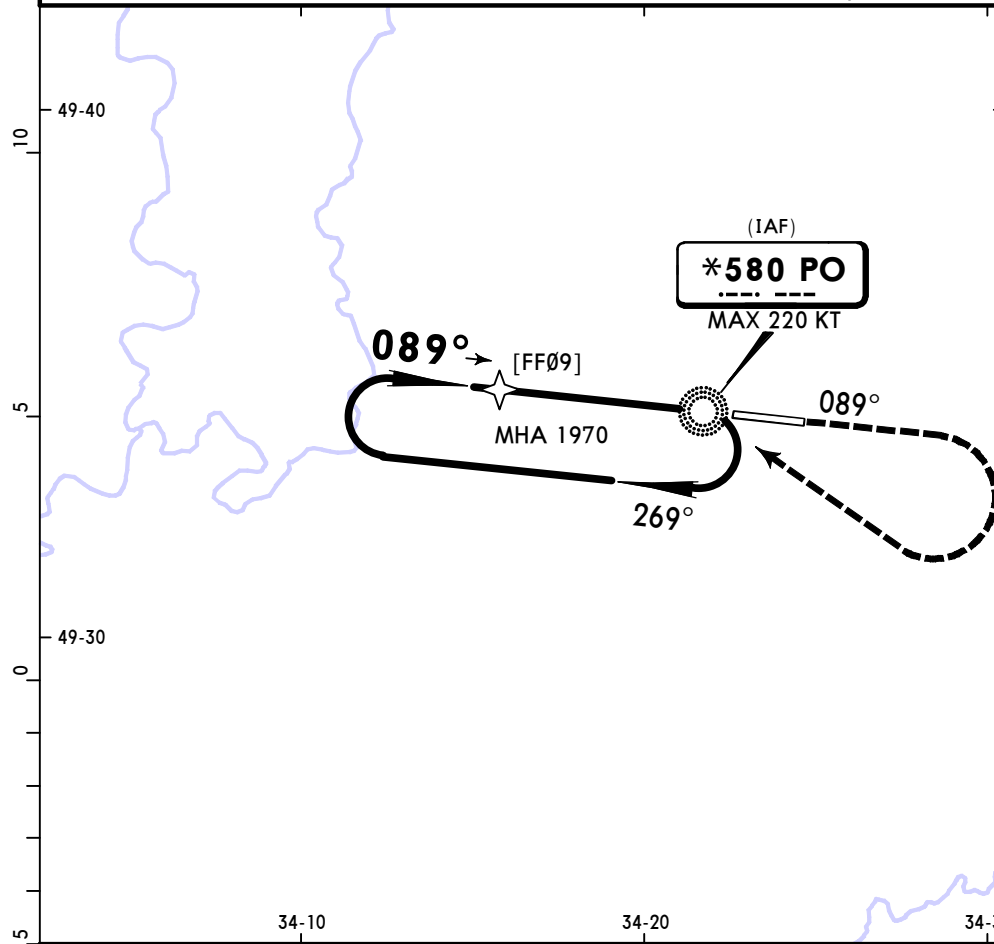
*POLTAVA Information

BRIEFING STRIP™

120.6					<div style="border: 1px solid black; border-radius: 50%; width: 100px; height: 100px; margin: 0 auto;"></div> 2300 MSA PO NDB
NDB PO *580	Final Apch Crs 089°	No FAF	MDA(H) 940' (435')	Apt Elev 505'	
MISSED APCH: Climb on 089° to 1970', then turn RIGHT climbing to 2960' to NDB, then according to chart.					
Alt Set: hPa		Rwy Elev: 18 hPa	Trans level: By ATC		Trans alt: 10010'

FT/METER CONVERSION
QNH

10010'	3050m
4930'	1500m
2960'	900m
2300'	700m
1970'	600m



Gnd speed-Kts	70	90	100	120	140	160	1970' ↑ on 089°
Descent Angle 3.00°	372	478	531	637	743	849	
MAP at NDB							

Timing not authorized for defining the MAP.

	JAR-OPS STRAIGHT-IN LANDING RWY 09		CIRCLE-TO-LAND	
	MDA(H) 940' (435')		Not authorized North of airport	
	RVR	Max Kts	MDA(H)	VIS
A		100	970' (465')	1500m
B	1500m	135	1010' (505')	1600m
C	1800m	180	1170' (665')	2400m
D	2000m	205	1210' (705')	3600m

PANS OPS

UKHP/PLV
SUPRUNIVKA INTL



9 APR 21 **16-2** Eff 22 Apr

POLTAVA, UKRAINE
NDB Rwy 27

*POLTAVA Information

120.6

BRIEFING STRIP™

NDB PO *580	Final Apch Crs 269°	No FAF	MDA(H) 1170' (665')	Apt Elev 505'
-----------------------	-------------------------------	--------	-------------------------------	---------------

2300

MSA
PO NDB

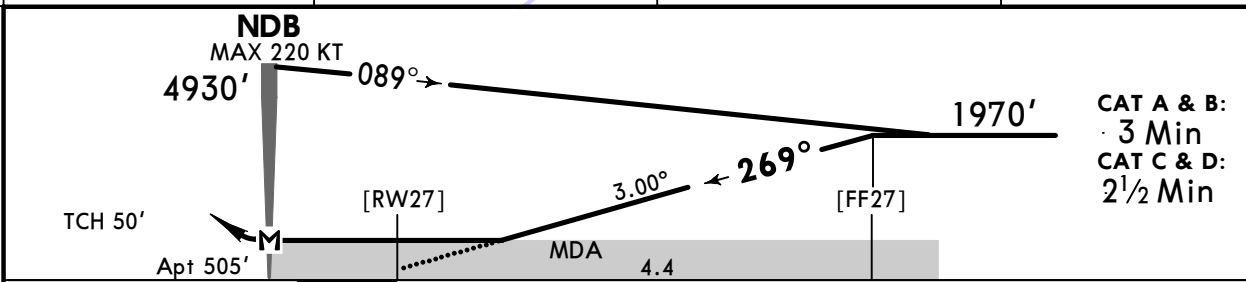
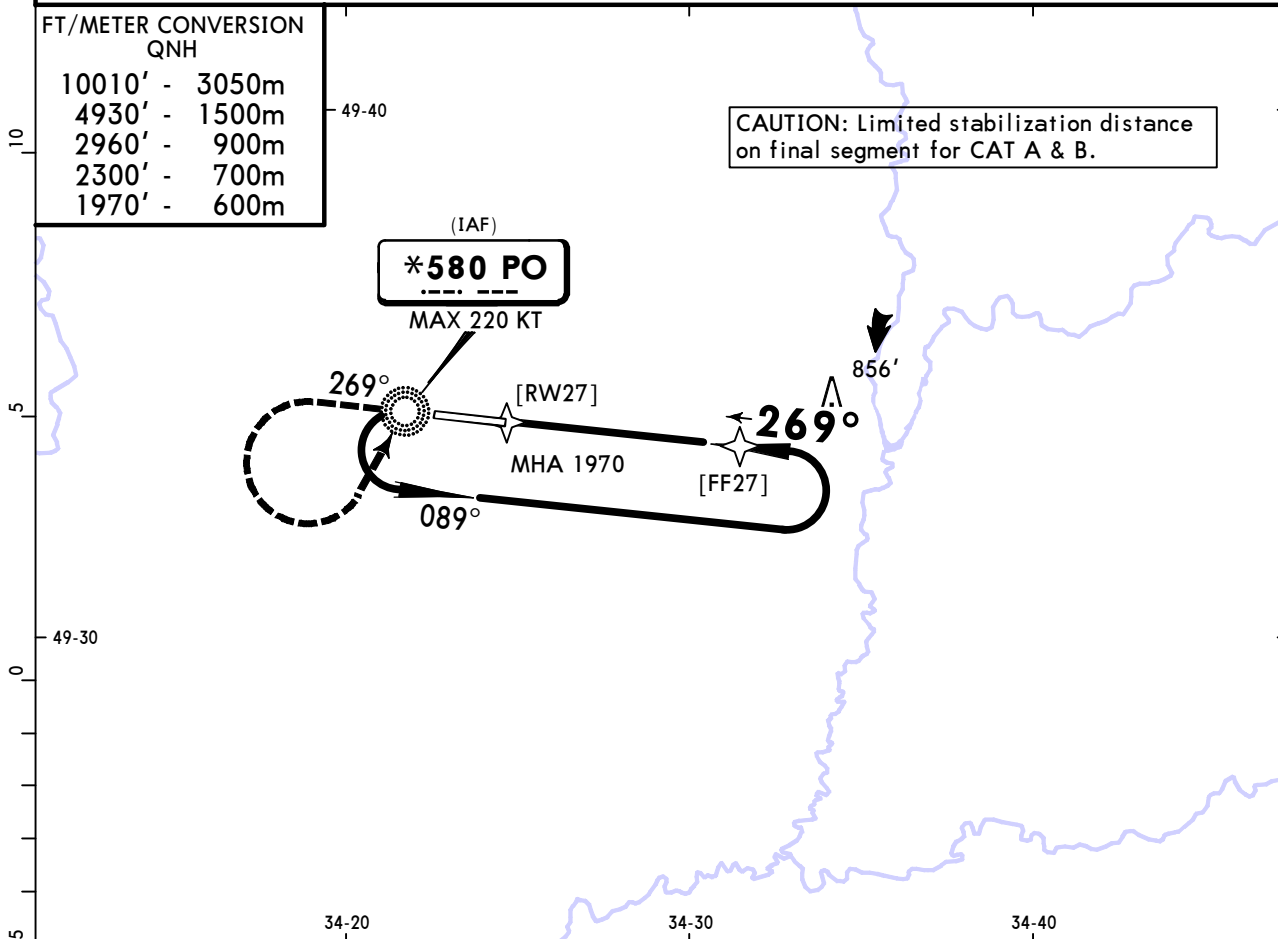
MISSED APCH: Climb on 269° to 1970', then turn LEFT climbing to 2960' to NDB, then according to chart.

Alt Set: hPa Rwy Elev: 18 hPa Trans level: By ATC Trans alt: 10010'

FT/METER CONVERSION
QNH

10010'	3050m
4930'	1500m
2960'	900m
2300'	700m
1970'	600m

CAUTION: Limited stabilization distance on final segment for CAT A & B.



Gnd speed-Kts	70	90	100	120	140	160
Descent angle 3.00°	372	478	531	637	743	849
MAP at NDB						

Timing not authorized for defining the MAP.

1970'
↑
on **269°**

JAR-OPS **STRAIGHT-IN LANDING RWY 27**

MDA(H) **1170'** (665')

CIRCLE-TO-LAND
Not authorized North of airport

Max Kts	MDA(H)	VIS
---------	--------	-----

PANS OPS	A	RVR 1500m	100	1170' (665')	1500m
	B	RVR 1500m	135	1170' (665')	1600m
	C	RVR 2000m	180	1170' (665')	2400m
	D	RVR 2000m	205	1210' (705')	3600m

Chart changes since cycle 04-2025

ADD = added chart, REV = revised chart, DEL = deleted chart.

ACT	PROCEDURE IDENT	INDEX	REV DATE	EFF DATE
POLTAVA, (SUPRUNIVKA INTL - UKHP)				

TERMINAL CHART CHANGE NOTICES

No Chart Change Notices for Airport UKHP