

## List of pages in this Trip Kit

Trip Kit Index

Airport Information For UKHS

Terminal Charts For UKHS

Revision Letter For Cycle 05-2025

Change Notices

Notebook

## General Information

Location: SUMY UKR  
ICAO/IATA: UKHS / UMY  
Lat/Long: N50° 51.50', E034° 45.77'  
Elevation: 594 ft

Airport Use: Public  
Daylight Savings: Observed  
UTC Conversion: -2:00 = UTC  
Magnetic Variation: 8.0° E

Customs: Yes  
Airport Type: IFR  
Landing Fee: Yes  
Control Tower: No  
Jet Start Unit: No  
LLWS Alert: No  
Beacon: No

Sunrise: 0142 Z  
Sunset: 1733 Z

## Runway Information

Runway: 08  
Length x Width: 8202 ft x 138 ft  
Surface Type: asphalt  
TDZ-Elev: 594 ft  
Lighting: Edge, ALS

Runway: 26  
Length x Width: 8202 ft x 138 ft  
Surface Type: asphalt  
TDZ-Elev: 571 ft  
Lighting: Edge, ALS

## Communication Information

Sumy Information: 124.700 AFIS

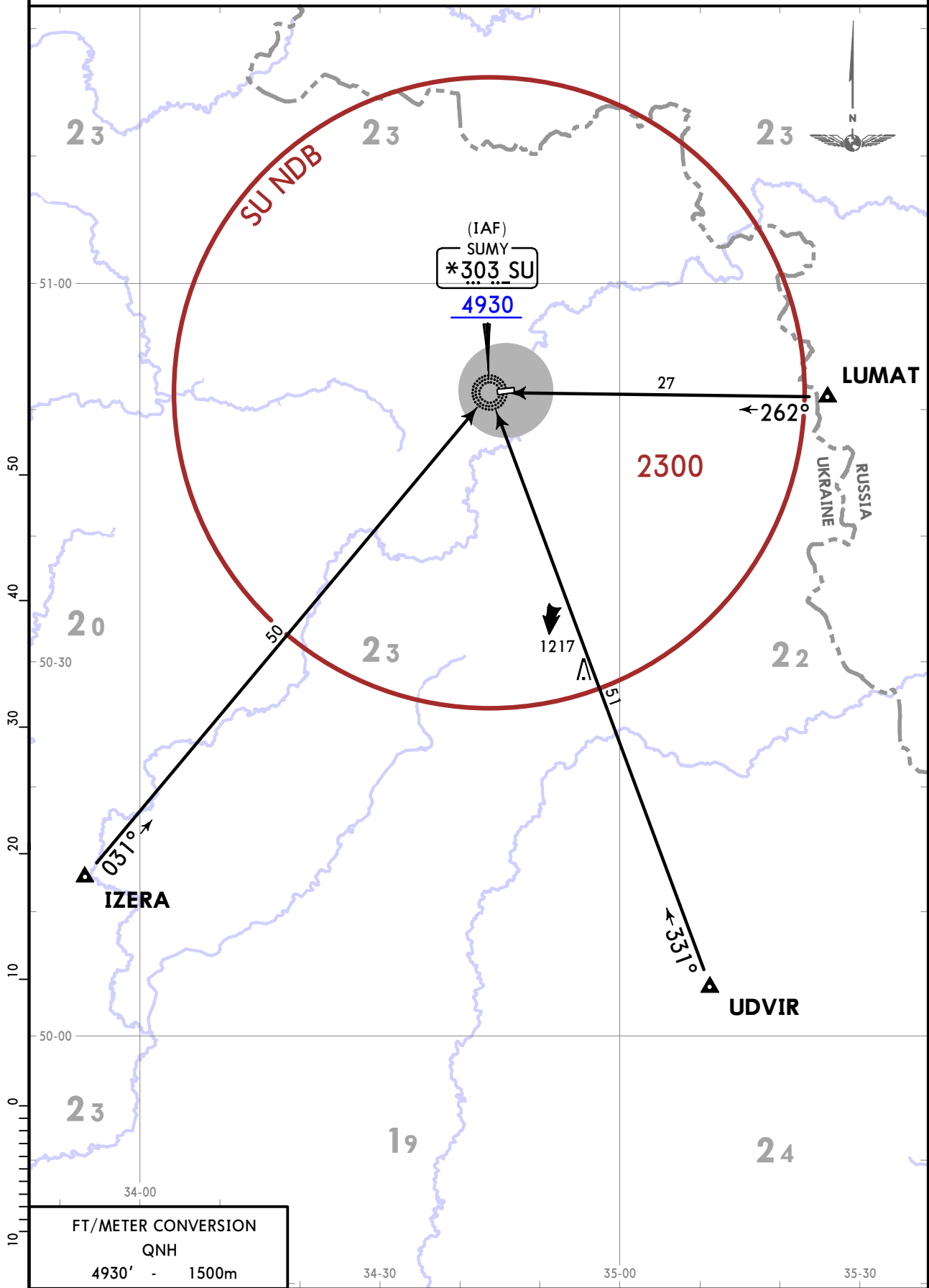
UKHS/UMY  
SUMY

JEPPESEN  
14 JAN 22 10-2 Eff 27 Jan

SUMY, UKRAINE  
ARRIVALS

Apt Elev <b>594</b>	Alt Set: hPa Trans level: By ATC
------------------------	-------------------------------------

### ARRIVALS (ALL RWYS)



FT/METER CONVERSION	
QNH	
4930'	1500m

#### ROUTING

To SU NDB, then according to approach chart.

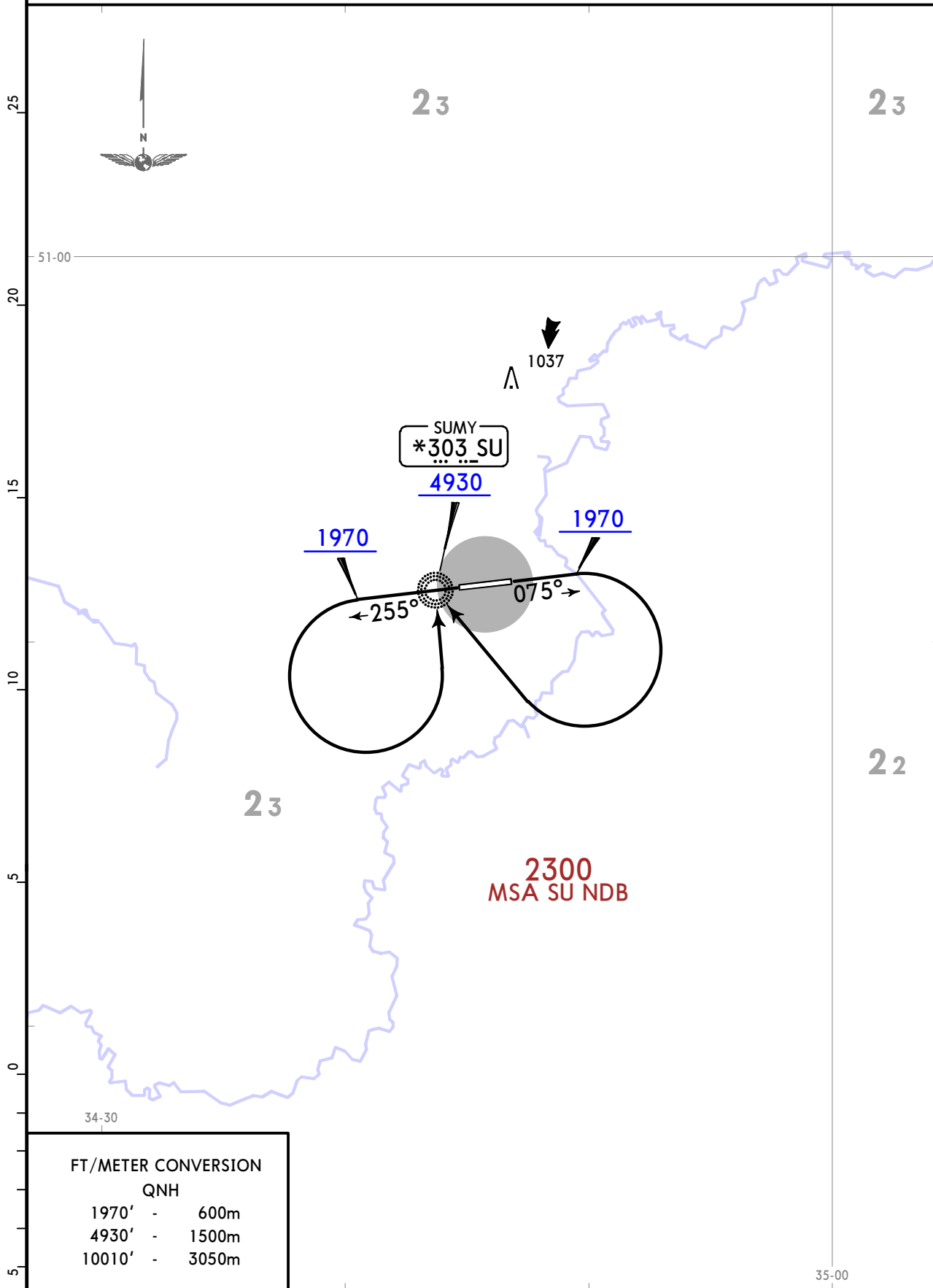
UKHS/UMY  
SUMY

JEPPESEN  
14 JAN 22 10-3 Eff 27 Jan

SUMY, UKRAINE  
DEPARTURES

Apt Elev <b>594</b>	Trans alt: 10010
------------------------	------------------

DEPARTURES  
(ALL RWYS)



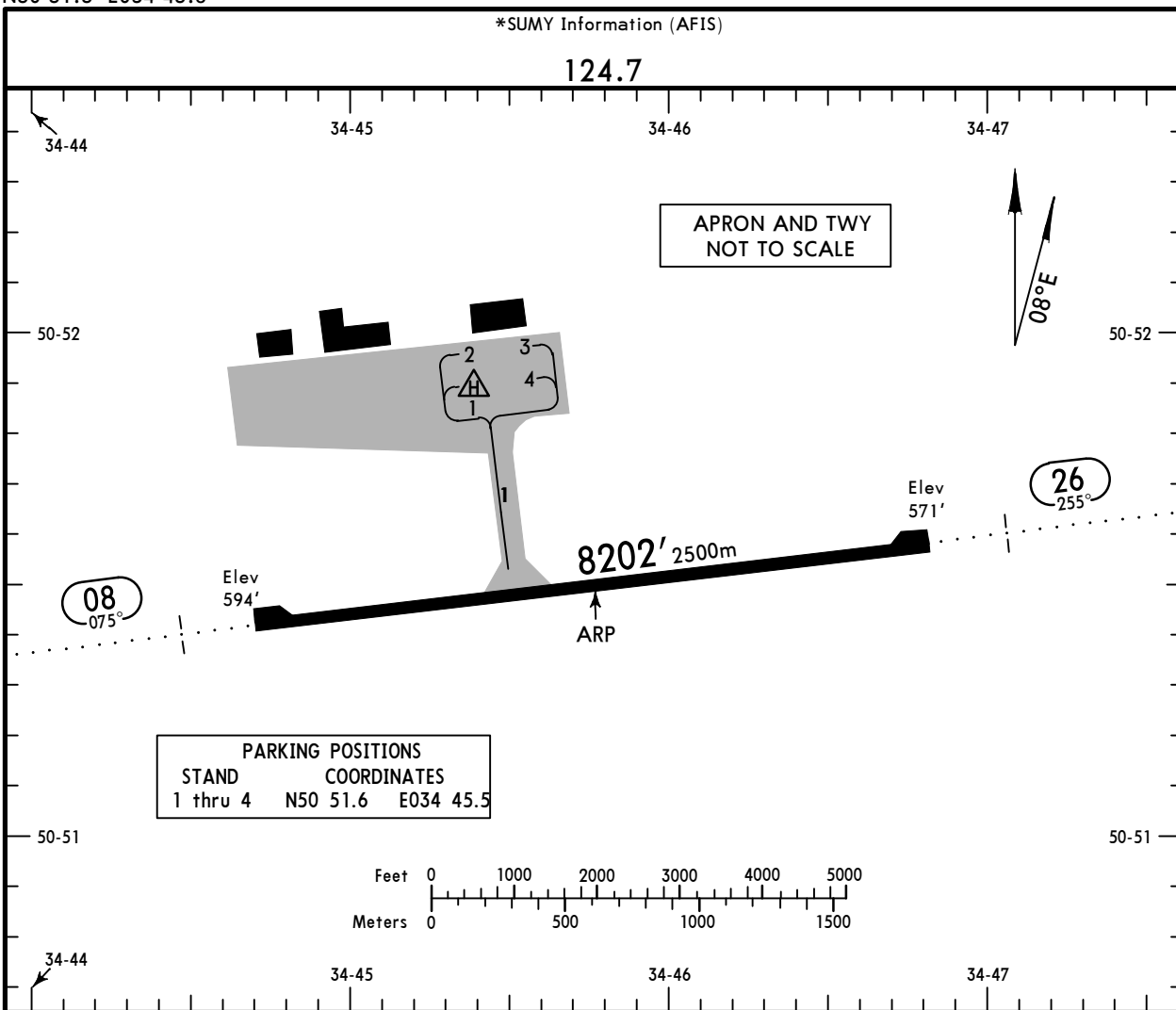
FT/METER CONVERSION	
QNH	
1970'	- 600m
4930'	- 1500m
10010'	- 3050m

RWY	ROUTING
<b>08</b>	Climb on 075° track to 1970, turn RIGHT to SU NDB, then as directed by ATS.
<b>26</b>	Climb on 255° track to 1970, turn LEFT to SU NDB, then as directed by ATS.

**UKHS/UMY**  
 Apt Elev **594'**  
 N50 51.5 E034 45.8

**JEPPESEN**  
 14 JAN 22 **(10-9)** Eff 27 Jan

**SUMY, UKRAINE**  
 SUMY



ADDITIONAL RUNWAY INFORMATION

RWY	USABLE LENGTHS	LANDING BEYOND		TAKE-OFF	WIDTH
		Threshold	Glide Slope		
08 26	RL (60m) ALS			<b>1</b>	138' 42m

**1 TAKE-OFF RUN AVAILABLE**

<p><u>RWY 08:</u></p> <p>From rwy head 8202' (2500m)</p> <p>twy 1 int 5085' (1550m)</p>	<p><u>RWY 26:</u></p> <p>From rwy head 8202' (2500m)</p> <p>twy 1 int 3117' (950m)</p>
---	--

DEPARTURE PROCEDURES

RWY 08: Climb on track 075° to 1970', turn RIGHT climbing to 4930' or above to SU NDB, then as directed by ATC.

RWY 26: Climb on track 255° to 1970', turn LEFT climbing to 4930' or above to SU NDB, then as directed by ATC.

ARRIVAL PROCEDURES

RWY 08 & 26: From waypoint (LUMAT, SUTOR, RS NDB) proceed to IAF SU NDB, then according to approach chart. Cross IAF SU NDB at 4930' or above.

**JAR-OPS** **TAKE-OFF 1**

All Rwys		
LVP must be in force		
RCLM (DAY only) or RL	RCLM (DAY only) or RL	NIL (DAY only)
A		
B	250m	500m
C	400m	
D	300m	

**1** Operators applying U.S. Ops Specs: CL required below 300m.

UKHS/UMY

**JEPPESEN**  
14 JAN 22 **10-9S** Eff 27 Jan

**Standard**  
**SUMY, UKRAINE**  
SUMY

STRAIGHT-IN RWY		A	B	C	D
<b>08</b>	NDB ①	<b>1070'</b> (476')	<b>1070'</b> (476')	<b>1070'</b> (476')	<b>1070'</b> (476')
		<b>R1500m</b>	<b>R1500m</b>	<b>R2000m</b>	<b>R2000m</b>
	ALS out	R1500m	R1500m	R2200m	R2200m
	NDB	<b>1070'</b> (476')	<b>1070'</b> (476')	<b>1070'</b> (476')	<b>1070'</b> (476')
		<b>R2200m</b>	<b>R2200m</b>	<b>R2400m</b>	<b>R2400m</b>
ALS out	R2400m	R2400m	R2600m	R2600m	
<b>26</b>	NDB ①	<b>1190'</b> (619')	<b>1190'</b> (619')	<b>1190'</b> (619')	<b>1190'</b> (619')
		<b>R1500m</b>	<b>R1500m</b>	<b>R2400m</b>	<b>R2400m</b>
	NDB	<b>1190'</b> (619')	<b>1190'</b> (619')	<b>1190'</b> (619')	<b>1190'</b> (619')
		<b>R2800m</b>	<b>R2800m</b>	<b>R3000m</b>	<b>R3000m</b>
ALS out	R3000m	R3000m	R3200m	R3200m	

① Continuous Descent Final Approach.

CIRCLE-TO-LAND	100 KT	135 KT	180 KT	205 KT
After apch to rwy 08	<b>1120'</b> (526')	<b>1120'</b> (526')	<b>1270'</b> (676')	<b>1450'</b> (856')
After apch to rwy 26 ②	<b>1190'</b> (619')	<b>1190'</b> (619')	<b>1270'</b> (699')	<b>1450'</b> (879')
	③ V1500m	③ V1600m	③ V2400m	V3600m

② Circling height based on rwy thresh elev of 571'.

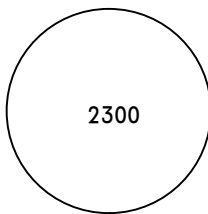
③ or higher minimums of preceding straight-in approach.

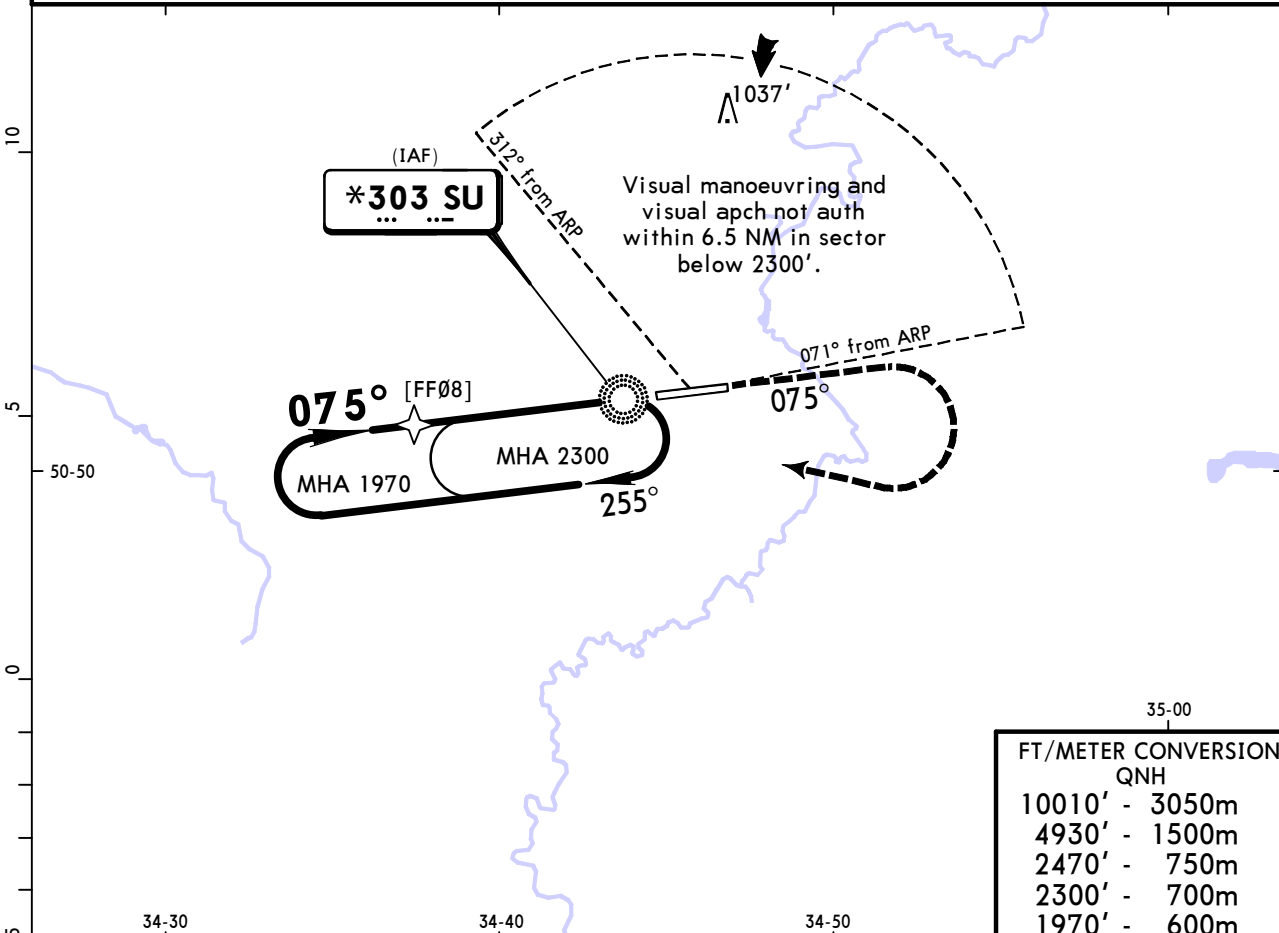
TAKE-OFF			
Low Visibility Take-off			
	Day: RL & RCLM Night: RL	Day: RL or RCLM Night: RL	Adequate vis ref (Day only)
A	R300m	400m	500m
B			
C			
D			

UKHS/UMY  
SUMY

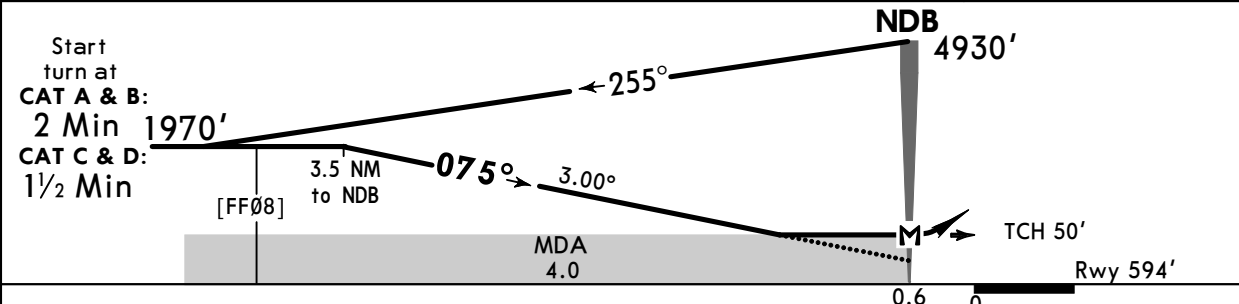
JEPPESEN  
14 JAN 22 (16-1) Eff 27 Jan

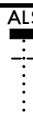
SUMY, UKRAINE  
NDB Rwy 08

*SUMY Information (AFIS) <b>124.7</b>					 2300 MSA SU NDB
NDB SU <b>*303</b>	Final Apch Crs <b>075°</b>	No FAF	MDA(H) <b>1070'</b> (476')	Apt Elev 594' Rwy 594'	
<b>MISSED APCH: Climb on track 075° to 1970', turn RIGHT to NDB climbing to 2470', then according to chart.</b>					
Alt Set: hPa(MM on req)		Rwy Elev: 22 hPa	Trans level: By ATC		Trans alt: 10010'
Racetrack restricted to MAX 225 KT.					



FT/METER CONVERSION	
QNH	
10010'	3050m
4930'	1500m
2470'	750m
2300'	700m
1970'	600m



Gnd speed-Kts	70	90	100	120	140	160	ALS  1970' on 075°
Descent Angle	3.00°	372	478	531	637	849	
MAP at NDB							

Timing not authorized for defining the MAP.

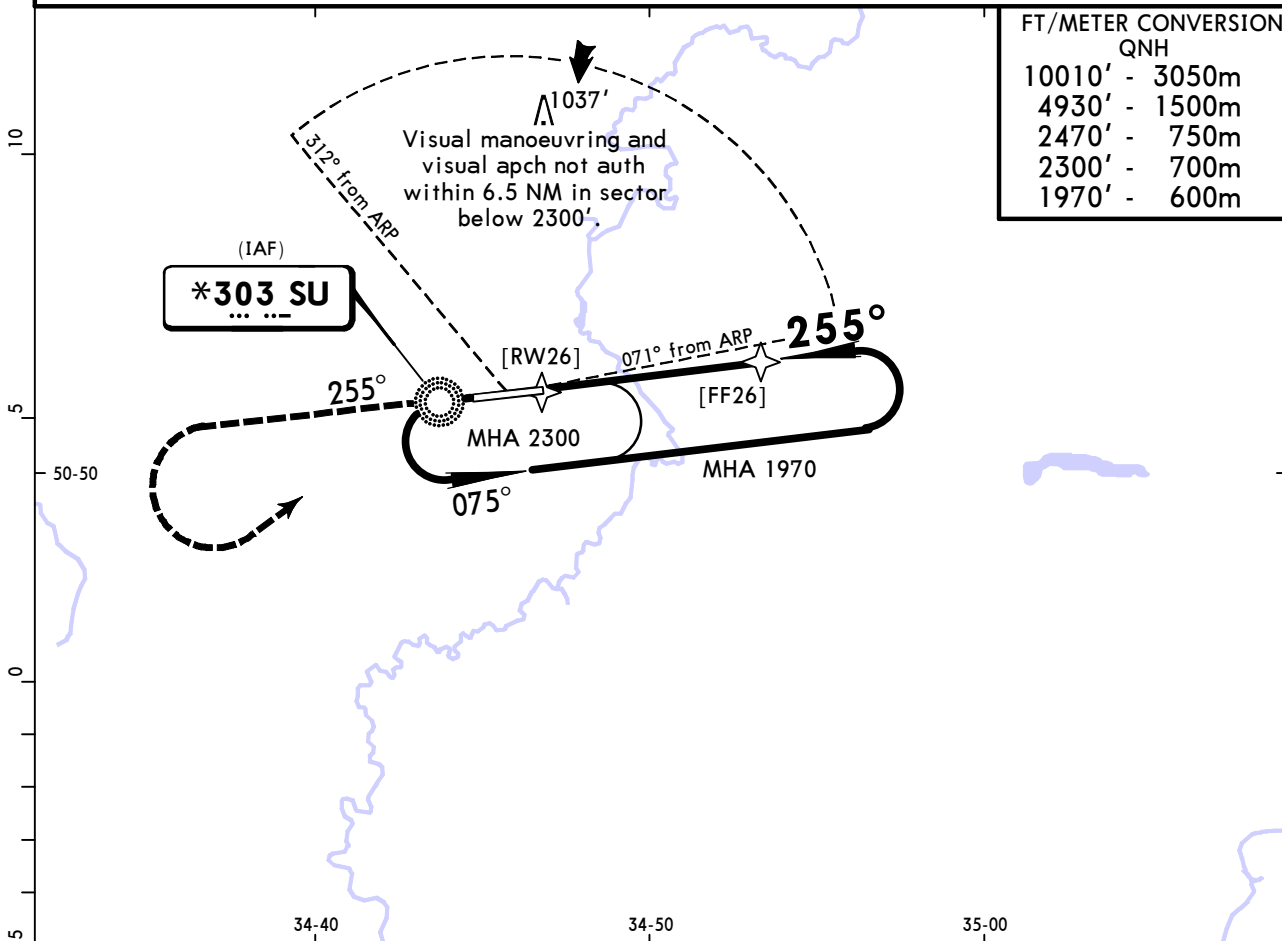
JAR-OPS		STRAIGHT-IN LANDING RWY 08		CIRCLE-TO-LAND	
		MDA(H) <b>1070'</b> (476')			
		ALS out		Max Kts	
A	RVR 1500m			100	1120' (526') 1500m
B	RVR 1500m			135	1120' (526') 1600m
C	RVR 1800m	RVR 2000m		180	1270' (676') 2400m
D	RVR 2000m			205	1450' (856') 3600m

UKHS/UMY  
SUMY

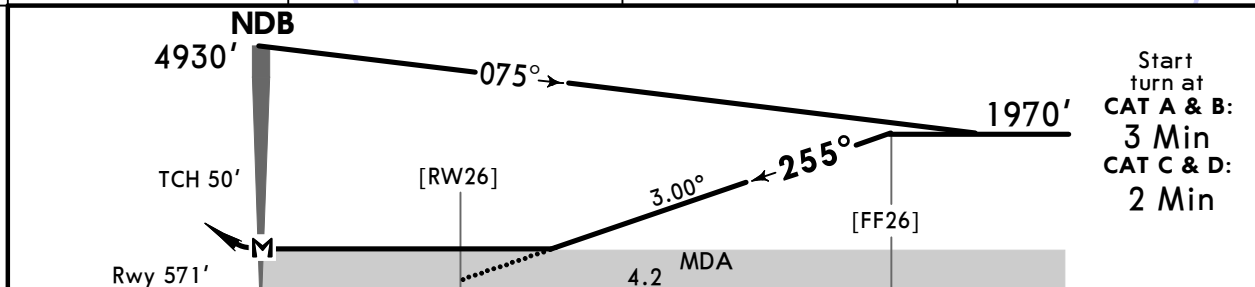
**JEPPESEN**  
14 JAN 22 **(16-2)** Eff 27 Jan

**SUMY, UKRAINE**  
**NDB Rwy 26**

*SUMY Information (AFIS) <b>124.7</b>					<div style="border: 1px solid black; border-radius: 50%; width: 100px; height: 100px; margin: 0 auto; display: flex; align-items: center; justify-content: center;">2300</div>
NDB SU <b>*303</b>	Final Apch Crs <b>255°</b>	No FAF	MDA(H) <b>1190'</b> (619')	Apt Elev 594' Rwy 571'	
<b>MISSED APCH: Climb on track 255° to 1970', then turn LEFT to NDB climbing to 2470', then according to chart.</b>					
Alt Set: hPa(MM on req)		Rwy Elev: 21 hPa	Trans level: By ATC		Trans alt: 10010'
Racetrack restricted to MAX 225 KT.					



FT/METER CONVERSION	
QNH	
10010'	3050m
4930'	1500m
2470'	750m
2300'	700m
1970'	600m



Gnd speed-Kts	70	90	100	120	140	160	ALS 1970' on 255°
Descent Angle	3.00°	372	478	531	637	743	
MAP at NDB							

Timing not authorized for defining the MAP.

JAR-OPS STRAIGHT-IN LANDING RWY 26			CIRCLE-TO-LAND <b>I</b>	
MDA(H) <b>1190'</b> (619')				
ALS out			Max Kts	
A	RVR 1500m		100	MDA(H) <b>1190'</b> (619') VIS 1500m
B	RVR 1500m		135	MDA(H) <b>1190'</b> (619') VIS 1600m
C	RVR 1800m	RVR 2000m	180	MDA(H) <b>1270'</b> (699') VIS 2400m
D	RVR 2000m		205	MDA(H) <b>1450'</b> (879') VIS 3600m

**I** Circling height based on rwy thresh elev of 571'.  
 CHANGES: Airport name. © JEPPESEN, 2020, 2022. ALL RIGHTS RESERVED.

## Chart changes since cycle 04-2025

ADD = added chart, REV = revised chart, DEL = deleted chart.

ACT	PROCEDURE IDENT	INDEX	REV DATE	EFF DATE
-----	-----------------	-------	----------	----------

**SUMY, (SUMY - UKHS)**

## TERMINAL CHART CHANGE NOTICES

No Chart Change Notices for Airport UKHS