

List of pages in this Trip Kit

Trip Kit Index
Airport Information For UKKE
Terminal Charts For UKKE
Revision Letter For Cycle 09-2019
Change Notices
Notebook

General Information

Location: CHERKASY UKR
ICAO/IATA: UKKE / CKC
Lat/Long: N49° 24.9', E031° 59.7'
Elevation: 374 ft

Airport Use: Public
Daylight Savings: Observed
UTC Conversion: -2:00 = UTC
Magnetic Variation: 7.0° E

Fuel Types: Jet A-1
Customs: Yes
Airport Type: IFR
Landing Fee: Yes
Control Tower: No
Jet Start Unit: No
LLWS Alert: No
Beacon: No

Sunrise: 0216 Z
Sunset: 1721 Z

Runway Information

Runway: 32
Length x Width: 8202 ft x 138 ft
Surface Type: asphalt
TDZ-Elev: 354 ft

Runway: 14
Length x Width: 8202 ft x 138 ft
Surface Type: asphalt
TDZ-Elev: 374 ft

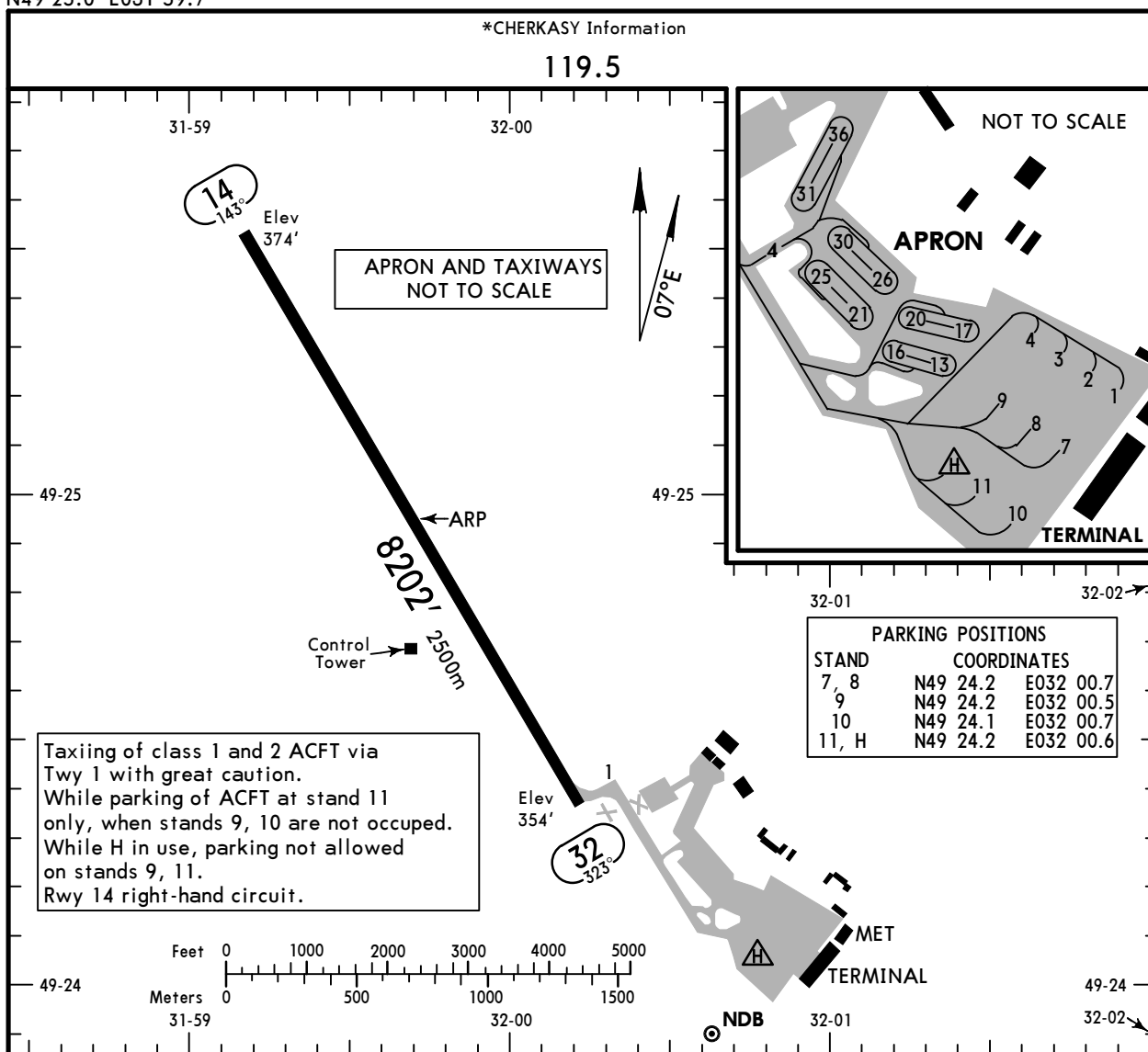
Communication Information

Kyiv Radar ACC: 135.150 RCO
Cherkasy Information: 119.500 AFIS

UKKE/CKC
 Apt Elev **374'**
 N49 25.0 E031 59.7

JEPPesen
 20 JUL 18 **(10-9)**

CHERKASY, UKRAINE
CHERKASY INTL



Taxiing of class 1 and 2 ACFT via Twy 1 with great caution. While parking of ACFT at stand 11 only, when stands 9, 10 are not occupied. While H in use, parking not allowed on stands 9, 11. Rwy 14 right-hand circuit.

ADDITIONAL RUNWAY INFORMATION

RWY	USABLE LENGTHS	LANDING BEYOND	TAKE-OFF	WIDTH
14 32				138' 42m

DEPARTURE PROCEDURES

RWY 14: Climb on track 143° to 2470', turn RIGHT climbing to 4930' or above to CK NDB, then according to ATC instruction. Minimum climb gradient 5%. If unable to comply, advice ATC.

RWY 32: Climb on track 323° to 2470', turn LEFT climbing to 4930' or above to CK NDB, then according to ATC instruction. Minimum climb gradient 5%. If unable to comply, advice ATC.

ARRIVAL PROCEDURES

RWY 14/32: From waypoints DEMER, PEKIT proceed to IAF CK NDB, then according to apch chart. Cross IAF CK NDB at 4930' or above. MSA is 2200' withing 25NM from CK NDB.

JAR-OPS

TAKE-OFF

All Rwys

NIL
(DAY only)

500m

A
B
C
D

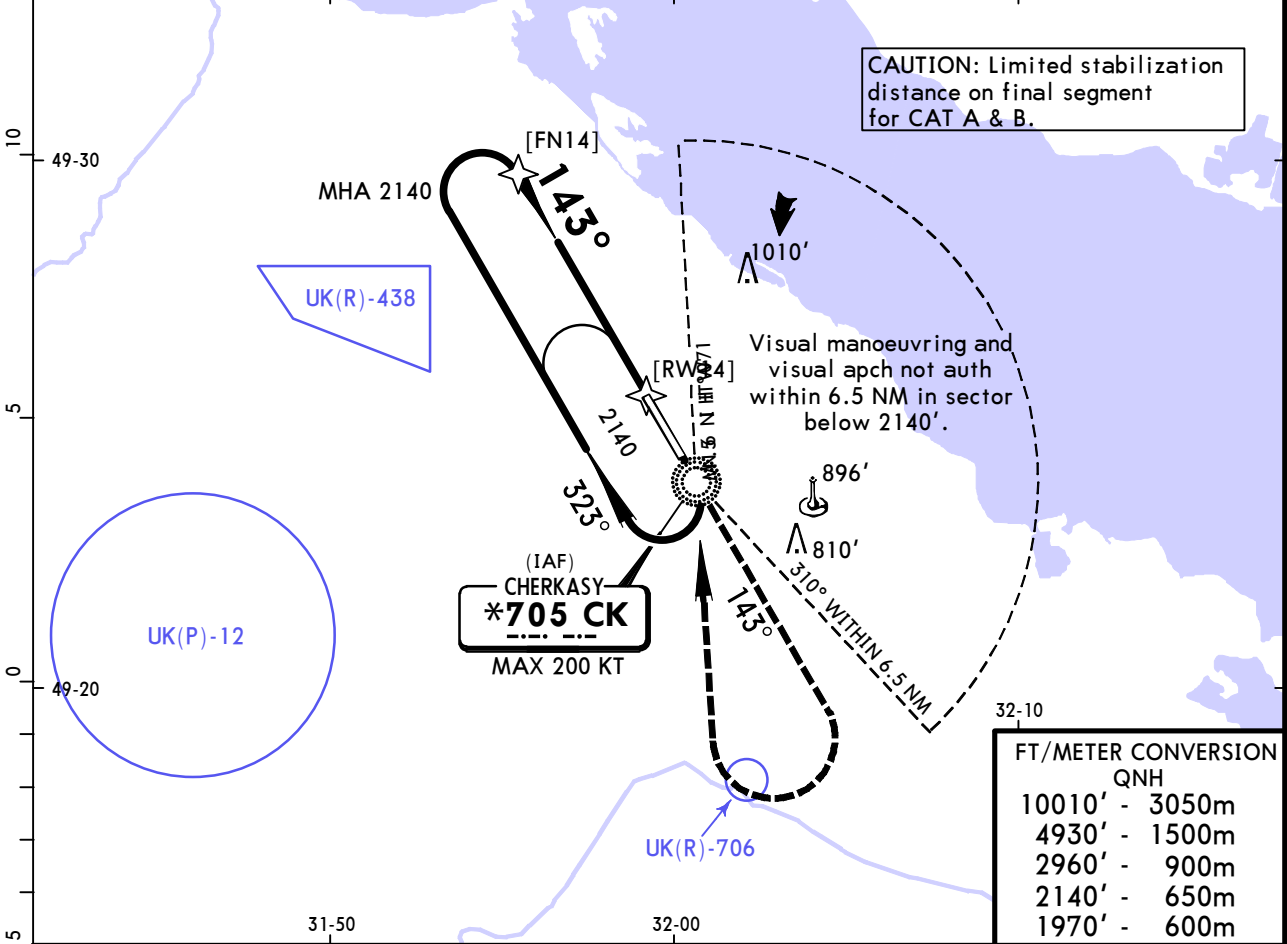
(CIO) Close-in obstacle: 421' tree 0.2NM (365m) in front of THR 14.
 (CIO) Close-in obstacle: 448' tree 0.3NM (644m) in front of THR 14.

UKKE/CKC
CHERKASY INTL

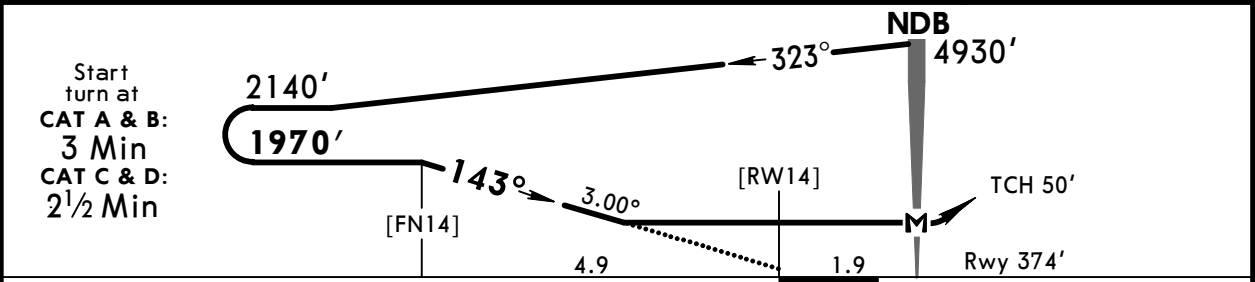
JEPPESSEN
20 JUL 18 **(16-1)**

CHERKASY, UKRAINE
NDB Rwy 14

*CHERKASY Information				KYIV Radar		
119.5				135.150		
NDB CK *705	Final Apch Crs 143°	No FAF	MDA(H) 870' (496')	Apt Elev 374'	2200	
				Rwy 374'		
MISSED APCH: Climb on track 143° to 1970', then turn RIGHT climbing to 2960' to NDB, then according to chart.						
Alt Set: hPa	Rwy Elev: 14 hPa	Trans level: By ATC	Trans alt: 10010'		MSA CK NDB	



FT/METER CONVERSION	
QNH	
10010'	3050m
4930'	1500m
2960'	900m
2140'	650m
1970'	600m



Gnd speed-Kts	70	90	100	120	140	160		1970'	on 143°	2960'	CK *705
Descent Angle	3.00°	372	478	531	637	743	849				
MAP at NDB											

JAR-OPS		STRAIGHT-IN LANDING RWY 14		CIRCLE-TO-LAND	
		MDA(H) 870' (496')		Max Kts	
A		RVR 1500m		100	1000' (626') 1500m
B				135	1050' (676') 1600m
C		RVR 2000m		180	1410' (1036') 2400m
D				205	1410' (1036') 3600m

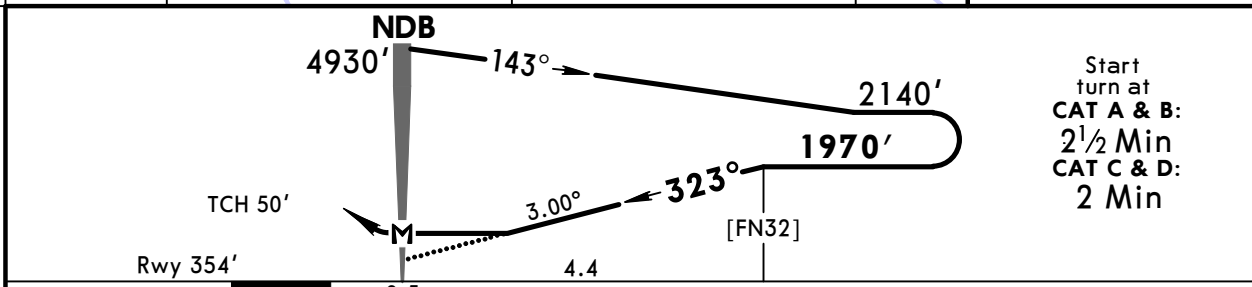
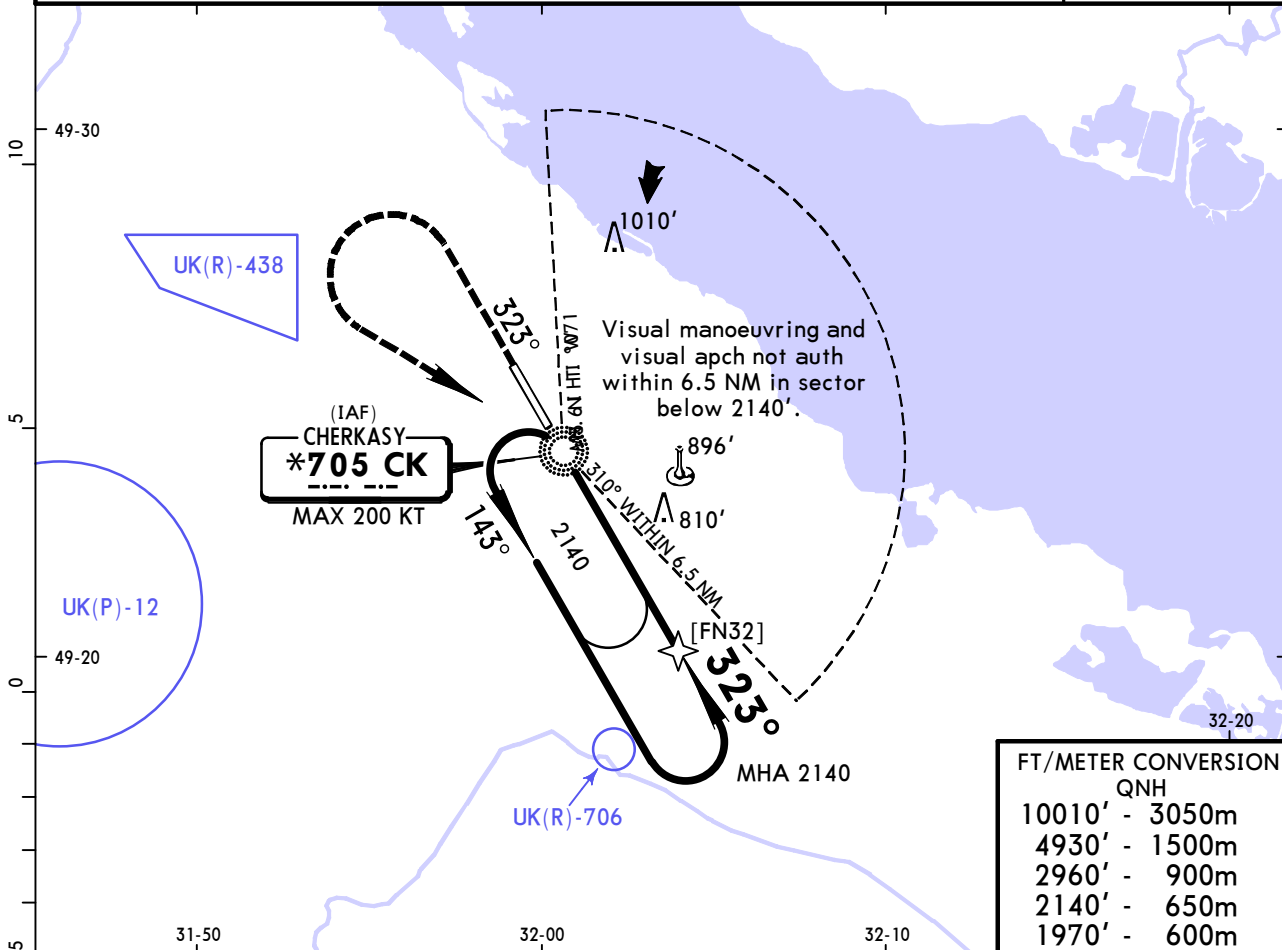
PANS OPS

UKKE/CKC
CHERKASY INTL

JEPPESSEN
20 JUL 18 **(16-2)**

CHERKASY, UKRAINE
NDB Rwy 32

*CHERKASY Information				KYIV Radar	
119.5				135.150	
NDB CK *705	Final Apch Crs 323°	No FAF	MDA(H) 1050' (696')	Apt Elev 374'	2200
				Rwy 354'	
MISSED APCH: Climb on track 323° to 1970', then turn LEFT climbing to 2960' to NDB, then according to chart.					MSA CK NDB
Alt Set: hPa	Rwy Elev: 13 hPa	Trans level: By ATC	Trans alt: 10010'		



Gnd speed-Kts	70	90	100	120	140	160	1970'	on 323°	2960'	CK *705
Descent Angle 3.00°	372	478	531	637	743	849				

PANS OPS	JAR-OPS STRAIGHT-IN LANDING RWY 32		CIRCLE-TO-LAND		
	MDA(H) 1050' (696')		Max Kts	MDA(H)	VIS
	A	RVR 1500m	100	1070' (696')	1500m
	B	RVR 1500m	135	1070' (696')	1600m
	C	RVR 2000m	180	1410' (1036')	2400m
D	RVR 2000m	205	1410' (1036')	3600m	

Chart changes since cycle 08-2019

ADD = added chart, REV = revised chart, DEL = deleted chart.

ACT	PROCEDURE IDENT	INDEX	REV DATE	EFF DATE
-----	-----------------	-------	----------	----------

CHERKASY, (CHERKASY INTL - UKKE)

TERMINAL CHART CHANGE NOTICES

Chart Change Notices for Airport UKKE

Type: Terminal

Effectivity: Temporary

Begin Date: Immediately

End Date: Until Further Notice

Based on SUP 020/18 aerodrome closed.