

List of pages in this Trip Kit

Trip Kit Index

Airport Information For UKKG

Terminal Charts For UKKG

Revision Letter For Cycle 05-2025

Change Notices

Notebook

General Information

Location: KIROVOHRAD UKR
ICAO/IATA: UKKG / KGO
Lat/Long: N48° 32.48', E032° 16.97'
Elevation: 571 ft

Airport Use: Public
Daylight Savings: Observed
UTC Conversion: -2:00 = UTC
Magnetic Variation: 7.0° E

Customs: No
Airport Type: IFR
Landing Fee: Yes
Control Tower: No
Jet Start Unit: No
LLWS Alert: No
Beacon: No

Sunrise: 0201 Z
Sunset: 1734 Z

Runway Information

Runway: 15
Length x Width: 4268 ft x 148 ft
Surface Type: asphalt
TDZ-Elev: 551 ft

Runway: 33
Length x Width: 4268 ft x 148 ft
Surface Type: asphalt
TDZ-Elev: 558 ft

Communication Information

Kyiv Information: 130.500 Flight Info Service RCO
Kirovohrad Information: 120.800 AFIS Non-English

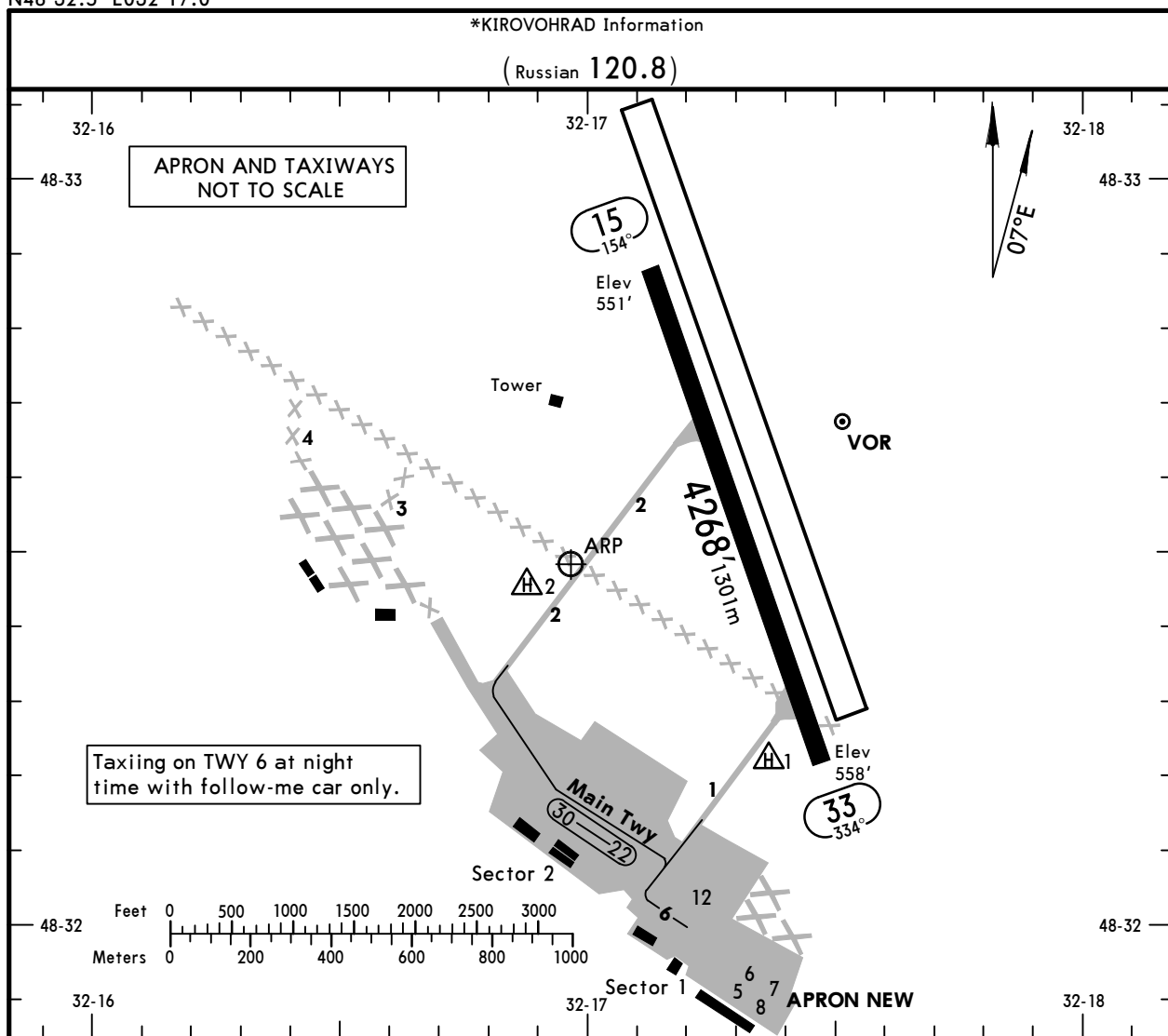
UKKG/KGO

Apt Elev **571'**
N48 32.5 E032 17.0

JEPPESSEN
14 MAY 21 **(10-9)** Eff 20 May

KIROVOHRAD, UKRAINE

KIROVOHRAD



ADDITIONAL RUNWAY INFORMATION

RWY	USABLE LENGTHS		TAKE-OFF	WIDTH
	Threshold	GLIDE SLOPE		
15 33	①	②		148' 45m

- ① LDA 4252' (1296m)
 - ② First 16'/5m artificial RWY for take-off are not used.
- TAKE-OFF RUN AVAILABLE**
- | | |
|----------------------------------|----------------------------------|
| <u>RWY 15:</u> | <u>RWY 33:</u> |
| From rwy head 4252' (1296m) | From rwy head 4252' (1296m) |
| ③ twy 2 int 2772' (845m) | |
- ③ Only for ACFT Code 1

DEPARTURE PROCEDURES

- RWY 15: Climb on track 154° to 2470', turn LEFT climbing 4930' or above to KVH VOR/DME, then as directed by ATC. Minimum climb gradient 5% up to 4930'. Bank angle 20°. If unable, advise ATC.
- RWY 33: Climb on track 334° to 2470', turn LEFT climbing 4930' or above to KVH VOR/DME, then as directed by ATC. Minimum climb gradient 5% up to 4930'. Bank angle 20°. If unable, advise ATC.

ARRIVAL PROCEDURES

- RWY 15/33: From waypoints GODOD, KOSNA, MIMKO proceed to IAF KVH VOR/DME, then according to apch chart. Cross IAF KVH VOR/DME at 4930' or above.

Std			TAKE-OFF
RCLM	Adequate Vis Ref		
DAY	DAY	NIGHT	
R400m	R/V500m	NA	

UKKG/KGO
KIROVOHRAD

JEPPESSEN
14 MAY 21 (13-1) Eff 20 May

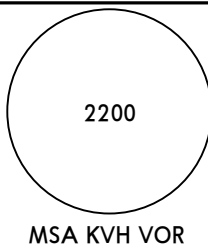
KIROVOHRAD, UKRAINE
VOR Rwy 15

*KIROVOHRAD Information

(Russian 120.8)

BRIEFING STRIP™

VOR KVH 114.9	Final Apch Crs 145°	D5.1 MANDATORY 2140' (1589')	DA/MDA(H) 970' (419')	Apt Elev 571' Rwy 551'
-------------------------	-------------------------------	--	---------------------------------	---------------------------------



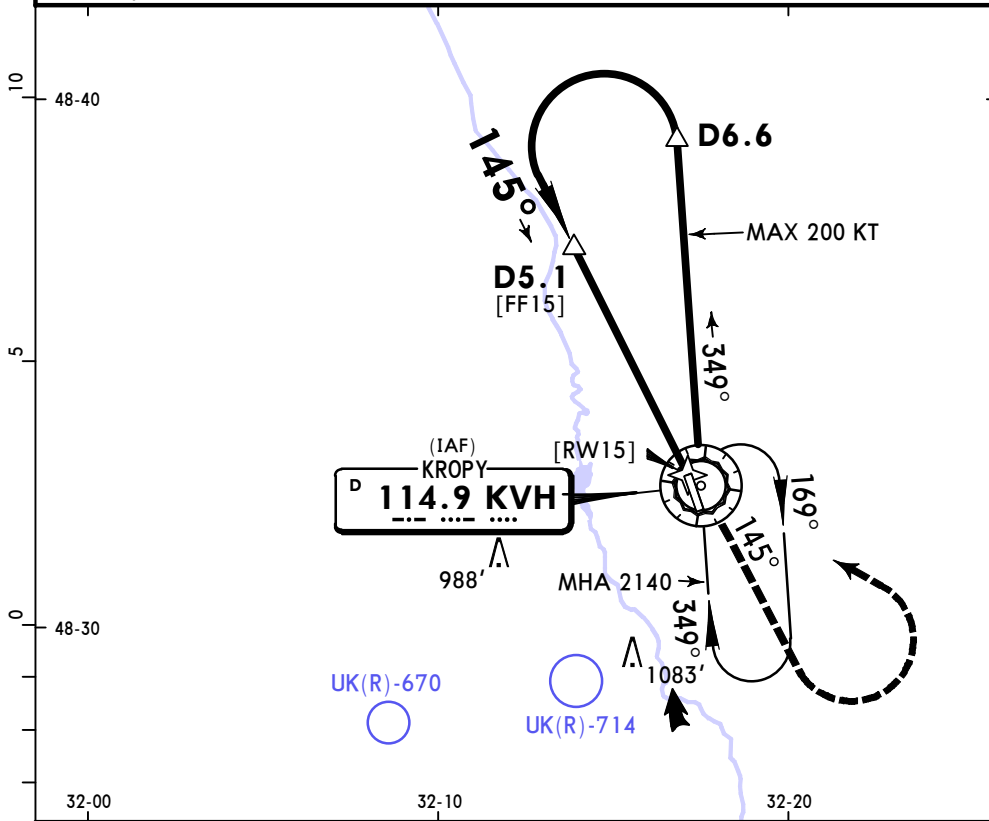
MISSED APCH: Climb on 145° to 1810', then turn LEFT to VOR climbing 2140', then according to chart. MAX 240 KT

Alt Set: hPa (MM on req) Rwy Elev: 20 hPa Trans level: By ATC Trans alt: 10010'

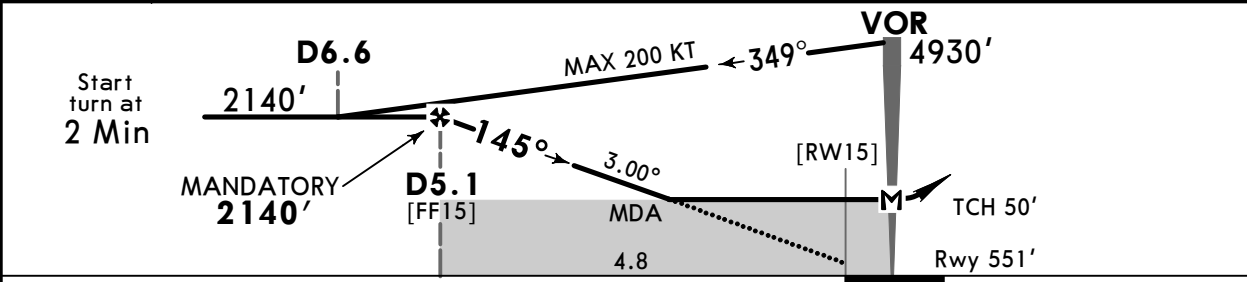
DME required.

FT/METER CONVERSION QNH

10010'	3050m
4930'	1500m
2140'	650m
1810'	550m



KVH DME	4.9	3.8	2.7	1.6
ALTITUDE	2060'	1710'	1380'	1040'



Gnd speed-Kts	70	90	100	120	140	160	240 KT MAX	1810' on 145°
Descent Angle 3.00°	372	478	531	637	743	849		
MAP at VOR								
D5.1 to MAP	5.1	4:22	3:24	3:04	2:33	2:11	1:55	

Std STRAIGHT-IN LANDING		CIRCLE-TO-LAND	
CDFA			
1 DA/MDA(H) 970' (419')			
A	R1500m	Max Kts 100	1040'(469') V1500m
B	R1500m	135	1120'(549') V1600m
C	R1900m	180	1480'(909') V2400m
D	R1900m	205	1480'(909') V3600m

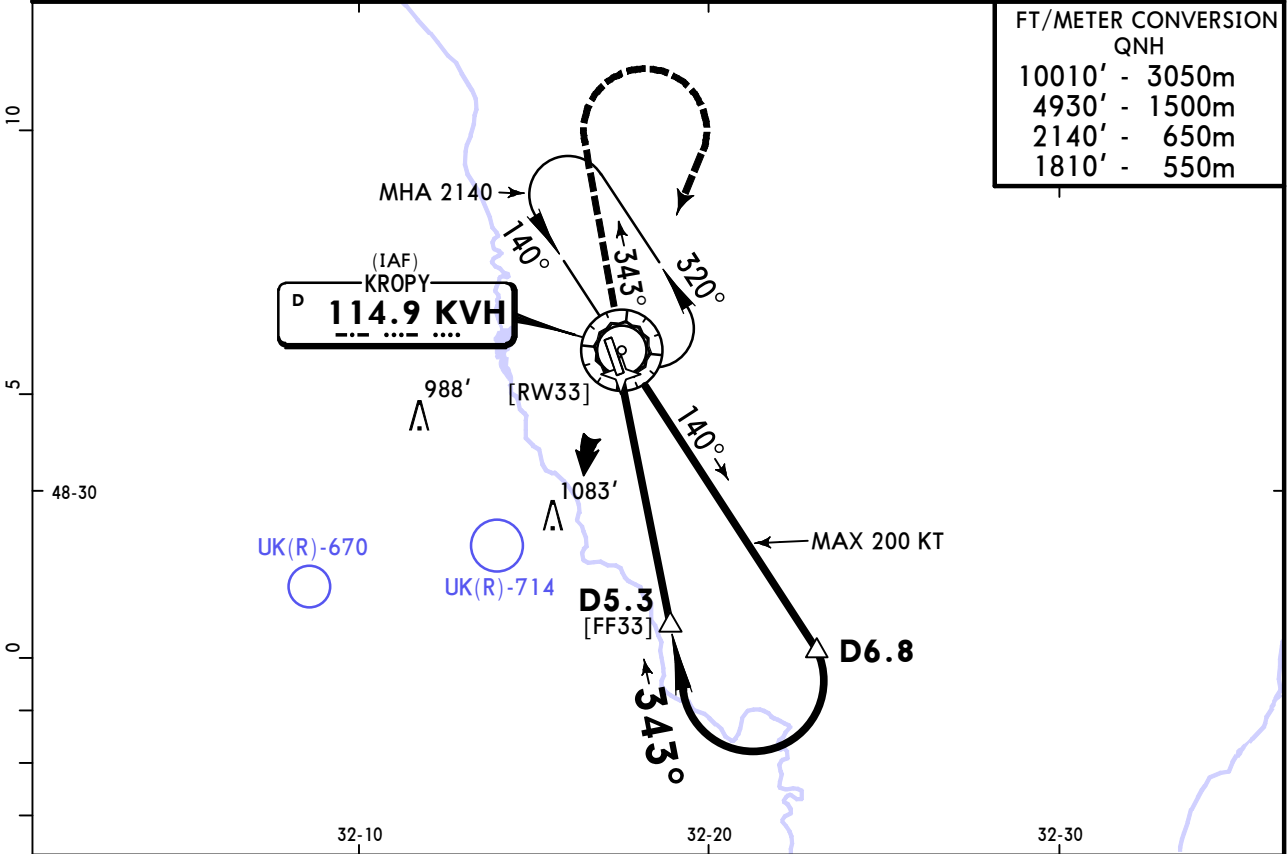
1 VNAV DA(H) in lieu of MDA(H) depends on operator policy.

UKKG/KGO KIROVOHRAD

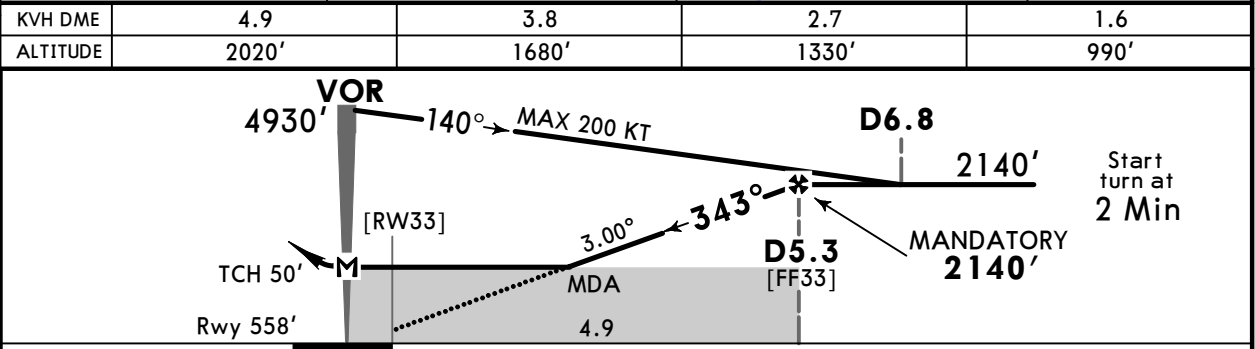
JEPPESEN
14 MAY 21 (13-2) Eff 20 May

KIROVOHRAD, UKRAINE VOR Rwy 33

*KIROVOHRAD Information (Russian 120.8)					<div style="border: 1px solid black; border-radius: 50%; width: 100px; height: 100px; margin: 0 auto; display: flex; align-items: center; justify-content: center;">2200</div> <p>MSA KVH VOR</p>
VOR KVH 114.9	Final Apch Crs 343°	D5.3 MANDATORY 2140' (1582')	DA/MDA(H) Refer to Minimums	Apt Elev 571' Rwy 558'	
MISSED APCH: Climb on 343° to 1810', then turn RIGHT to VOR climbing 2140', then according to chart. MAX 240 KT					
Alt Set: hPa (MM on req)		Rwy Elev: 20 hPa	Trans level: By ATC		Trans alt: 10010'
DME required.					



FT/METER CONVERSION QNH	
10010'	3050m
4930'	1500m
2140'	650m
1810'	550m



Gnd speed-Kts	70	90	100	120	140	160	240 KT MAX	1810' ↑ on 145°
Descent Angle 3.00°	372	478	531	637	743	849		
MAP at VOR								
D5.3 to MAP	5.3	4:33	3:32	3:11	2:39	2:16	1:59	

Std STRAIGHT-IN LANDING				CIRCLE-TO-LAND	
CDFA					
1 DA/MDA(H) AB: 940' (382') C: 970' (412') D: 990' (432')					
A	R1500m			Max Kts	MDA(H)
B	R1500m			100	1040' (469') V1500m
C	R1900m			135	1120' (549') V1600m
D	R2000m			180	1480' (909') V2400m
				205	1480' (909') V3600m

1 VNAV DA(H) in lieu of MDA(H) depends on operator policy.
 CHANGES: Rwy designator. New AOM concept. © JEPPESEN, 2018, 2021. ALL RIGHTS RESERVED.

Chart changes since cycle 04-2025

ADD = added chart, REV = revised chart, DEL = deleted chart.

ACT	PROCEDURE IDENT	INDEX	REV DATE	EFF DATE
-----	-----------------	-------	----------	----------

KIROVOHRAD, (KIROVOHRAD - UKKG)

TERMINAL CHART CHANGE NOTICES

No Chart Change Notices for Airport UKKG