

List of pages in this Trip Kit

Trip Kit Index

Airport Information For UKKM

Terminal Charts For UKKM

Revision Letter For Cycle 05-2025

Change Notices

Notebook

General Information

Location: KYIV UKR
ICAO/IATA: UKKM / GML
Lat/Long: N50° 36.22', E030° 11.47'
Elevation: 518 ft

Airport Use: Public
Daylight Savings: Observed
UTC Conversion: -2:00 = UTC
Magnetic Variation: 7.0° E

Fuel Types: Jet A-1
Repair Types: Minor Airframe, Minor Engine, Major Airframe, Major Engine
Customs: Yes
Airport Type: IFR
Landing Fee: Yes
Control Tower: Yes
Jet Start Unit: No
LLWS Alert: No
Beacon: No

Sunrise: 0201 Z
Sunset: 1751 Z

Runway Information

Runway: 15
Length x Width: 11490 ft x 184 ft
Surface Type: concrete
TDZ-Elev: 516 ft
Lighting: Edge, ALS, Centerline, TDZ

Runway: 33
Length x Width: 11490 ft x 184 ft
Surface Type: concrete
TDZ-Elev: 511 ft
Lighting: Edge, ALS, Centerline

Communication Information

Antonov Tower: 120.550
Antonov Radar: 129.550
Antonov Radar: 118.150
Kyiv Radar ACC: 127.725 RCO
Kyiv Radar ACC: 124.675 RCO
Kyiv Radar ACC: 125.300 RCO

UKKM/GML ANTONOV-2 INTL

JEPPESEN
11 FEB 22
Eff 24 Feb **(30-1R)**

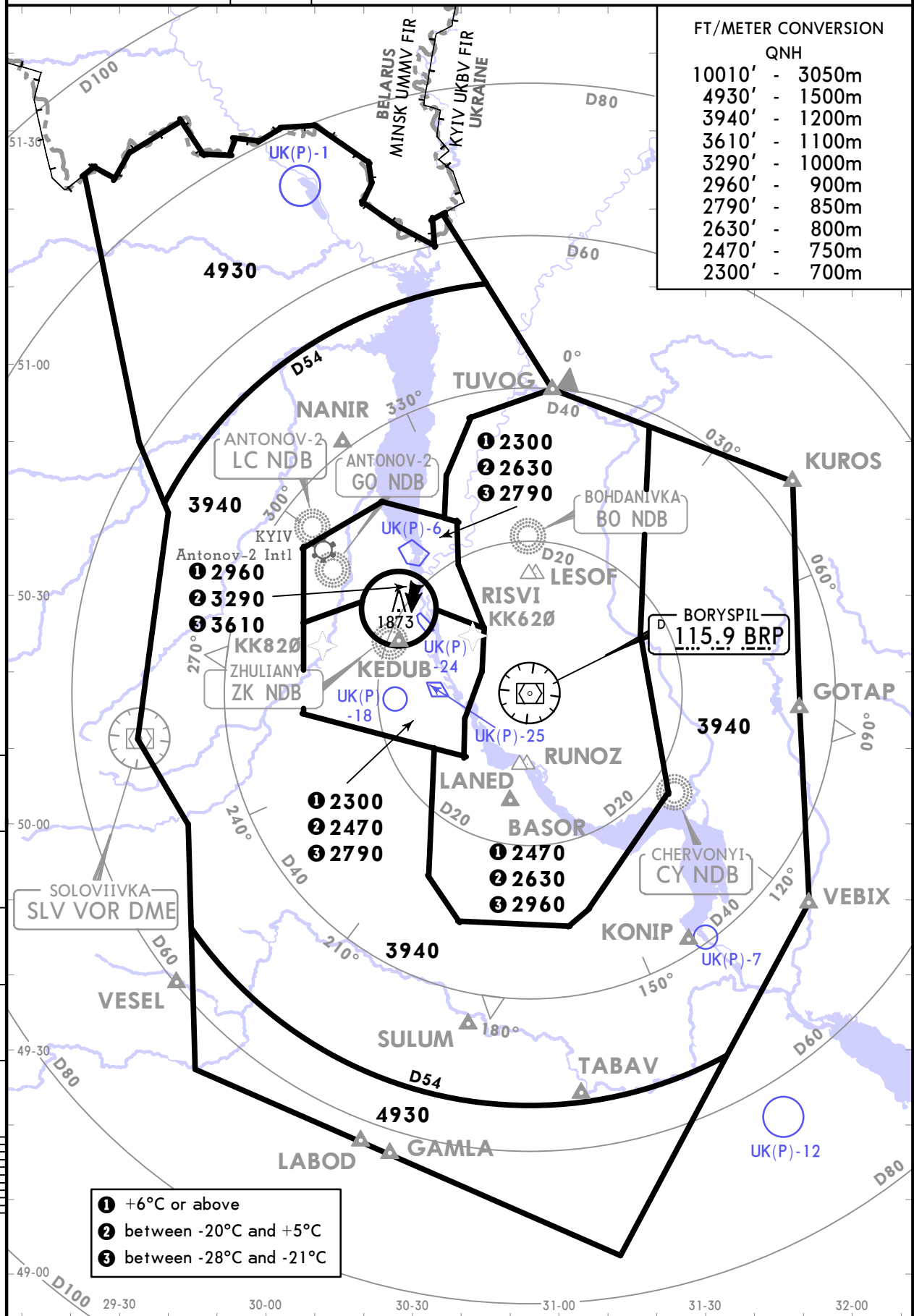
KYIV, UKRAINE RADAR MINIMUM ALTITUDES

KYIV Radar
FOR SECTORS REFER TO 10-1
122.775 124.675
125.3
127.725 128.175

Apt Elev
518

Alt Set: hPa (MM on request)
Trans level: By ATC Trans alt: 10010
1. This chart may only be used for cross-checking of altitudes assigned while under vectoring control.
2. Visual manoeuvring (circling) and visual approach in the sector from BRP R004 to BRP R054, from D2.7 to D6.5 BRP below 2470, not authorized.

FT/METER CONVERSION	
QNH	
10010'	- 3050m
4930'	- 1500m
3940'	- 1200m
3610'	- 1100m
3290'	- 1000m
2960'	- 900m
2790'	- 850m
2630'	- 800m
2470'	- 750m
2300'	- 700m



- ① +6°C or above
- ② between -20°C and +5°C
- ③ between -28°C and -21°C

UKKM/GML
ANTONOV-2 INTL

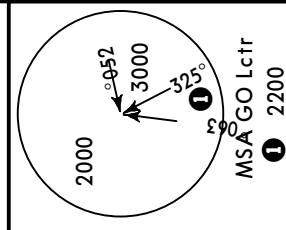
JEPPESEN
21 JAN 22 (30-2A) Eff 27 Jan

KYIV, UKRAINE
STAR

Apt Elev 518'
Alt Set: hPa
Trans level: By ATC Trans alt: 10010'
EXPECT descent clearance by ATC.

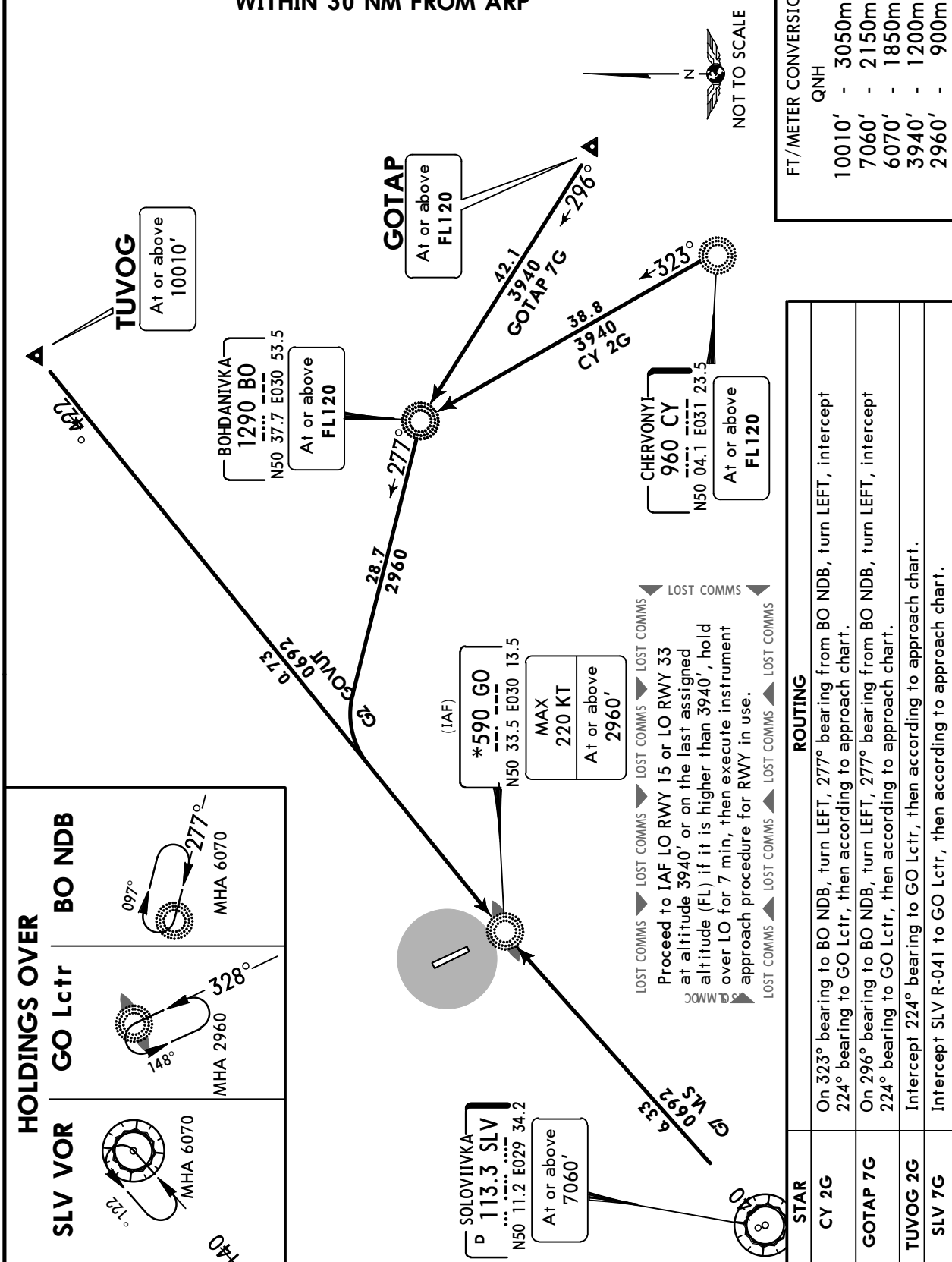
CHERVONYI 2G (CY 2G) [CY2G]
GOTAP 7G [GOTA7G], TUVOG 2G [TUV02G]
SOLOVIIVKA 7G (SLV 7G) [SLV7G]
ARRIVALS
(RWY 33)

**SPEED: MAX 250 KT AT OR BELOW 10010'
WITHIN 30 NM FROM ARP**



FT./METER CONVERSION
QNH

10010'	-	3050m
7060'	-	2150m
6070'	-	1850m
3940'	-	1200m
2960'	-	900m



CHANGES: General note revised.

UKKM/GML
ANTONOV-2 INTL

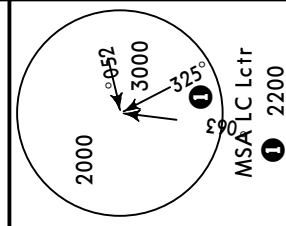
JEPPESEN
17 MAY 19 30-3 Eff 23 May

KYIV, UKRAINE
SID

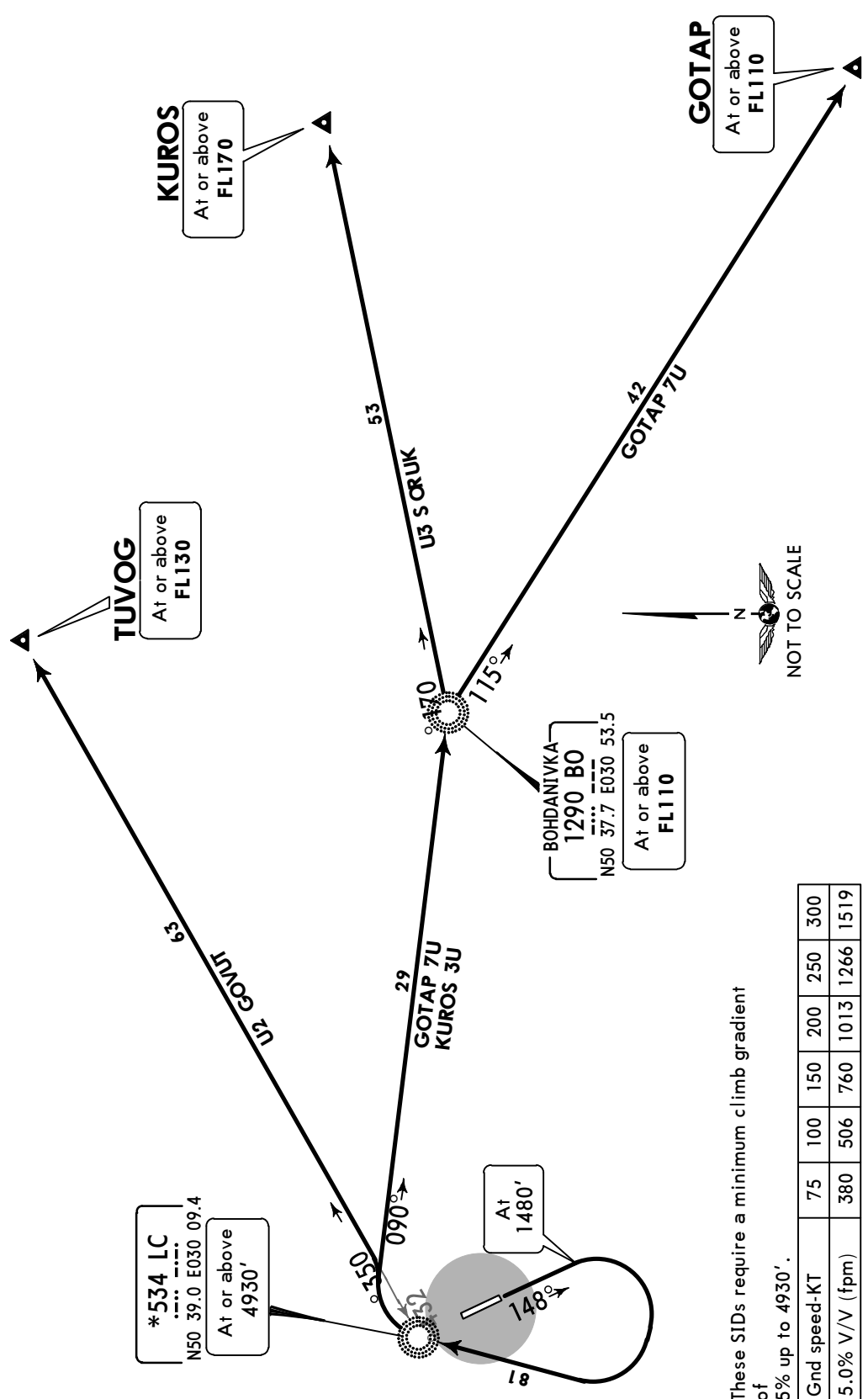
Apt Elev
518'

Trans level: By ATC Trans alt: 10010'
If unable to comply SIDs advise ATC.

GOTAP 7U (GOTAP 7U) [GOTA7U]
KUROS 3U (KUROS 3U) [KURO3U]
TUVOG 2U (TUVOG 2U) [TUV02U]
DEPARTURES
(RWY 15)



FT/METER CONVERSION
QNH
1480' - 450m
4930' - 1500m
10010' - 3050m



BOHDANIVKA
1290 BO
N50 37.7 E030 53.5
At or above
FL110

*534 LC
N50 39.0 E030 09.4
At or above
4930'

These SIDs require a minimum climb gradient of 5% up to 4930'.

Gnd speed-KT	75	100	150	200	250	300
5.0% V/V (fpm)	380	506	760	1013	1266	1519

ROUTING	
SID	
GOTAP 7U	Climb on 148° track to 1480', turn RIGHT to LC Lctr, turn RIGHT, intercept 090° bearing to BO NDB, turn RIGHT, 115° bearing to GOTAP.
KUROS 3U	Climb on 148° track to 1480', turn RIGHT to LC Lctr, turn RIGHT, intercept 090° bearing to BO NDB, turn LEFT, 071° bearing to KURO3U.
TUVOG 2U	Climb on 148° track to 1480', turn RIGHT to LC Lctr, turn RIGHT, 053° bearing from LC Lctr to TUVOG.

UKKM/GML
ANTONOV-2 INTL

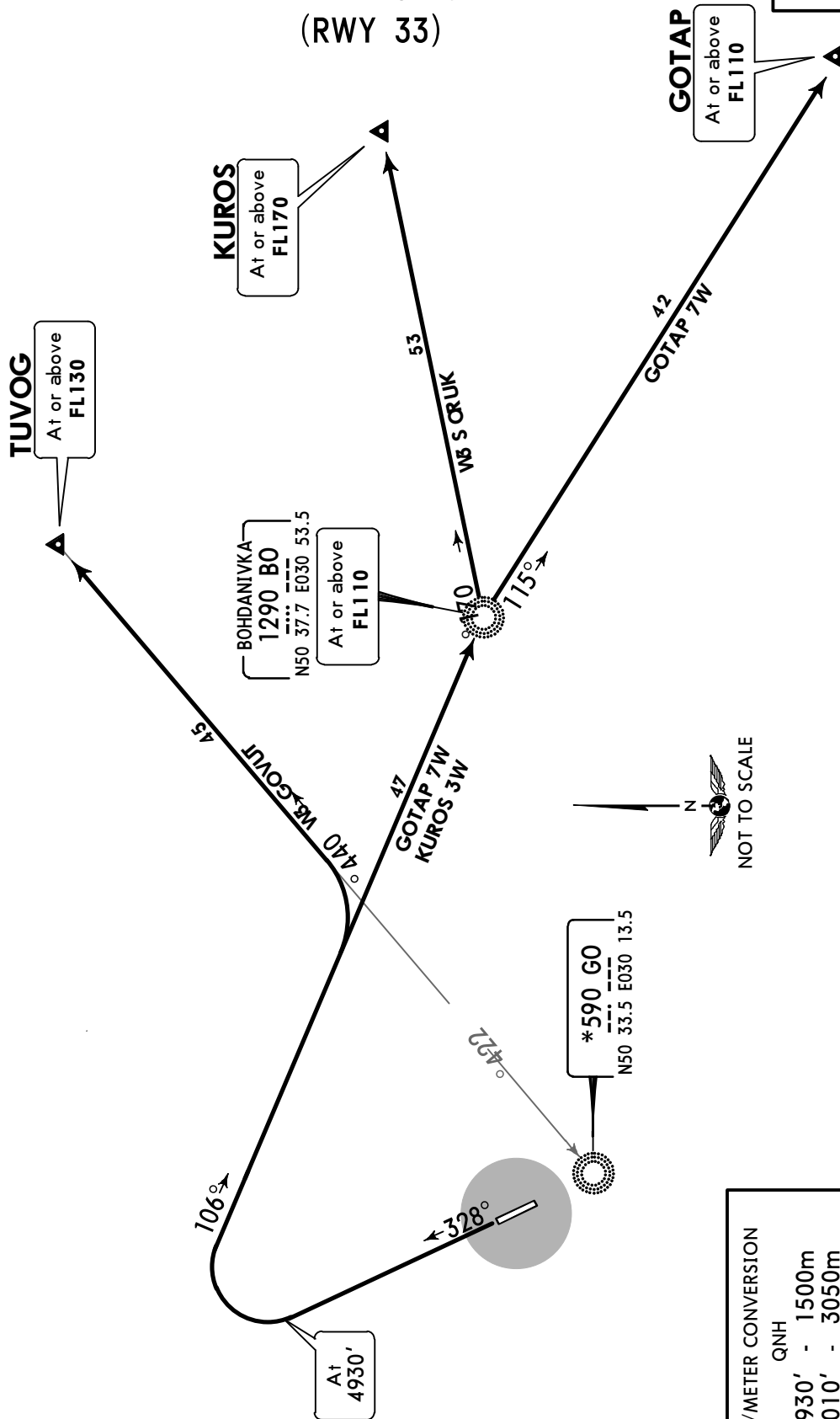
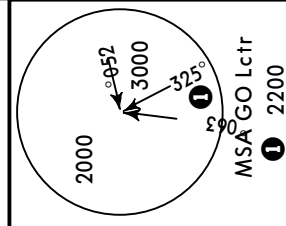
JEPPESEN
17 MAY 19 (30-3A) Eff 23 May

KYIV, UKRAINE
SID

Apt Elev
518'

Trans level: By ATC Trans alt: 10010'

GOTAP 7W (GOTAP 7W) [GOTA7W]
KUROS 3W (KUROS 3W) [KURO3W]
TUVOG 3W (TUVOG 3W) [TUV03W]
DEPARTURES
(RWY 33)

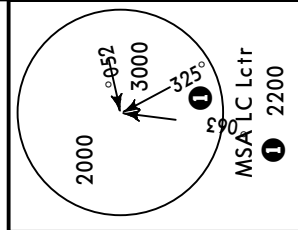


FT/METER CONVERSION	
QNH	
4930'	- 1500m
10010'	- 3050m

SID	ROUTING
GOTAP 7W	Climb on 328° track to 4930', turn RIGHT, intercept 106° bearing to BO NDB, turn RIGHT, 115° bearing to GOTAP.
KUROS 3W	Climb on 328° track to 4930', turn RIGHT, intercept 106° bearing to BO NDB, turn LEFT, 071° bearing to KUROS.
TUVOG 3W	Climb on 328° track to 4930', turn RIGHT, intercept 106° bearing to BO NDB, turn LEFT, intercept 044° bearing from GO Lctr to TUVOG.

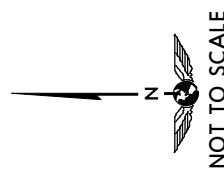
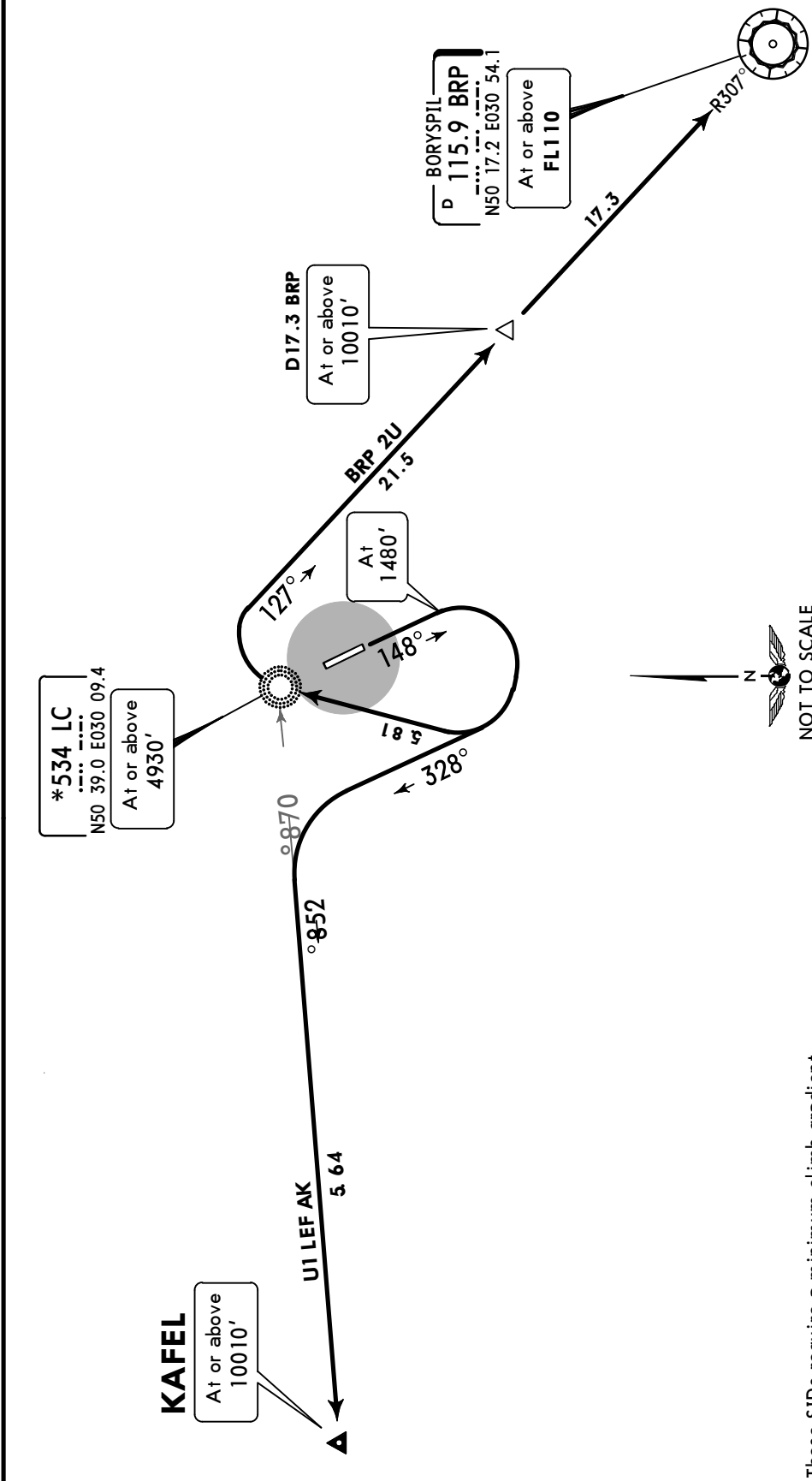
Apt Elev 518' Trans level: By ATC Trans alt: 10010'
If unable to comply SIDs advise ATC.

**BORYSPIL 2U (BRP 2U) [BRP2U]
KAFEL 1U [KAFE1U]
DEPARTURES
(RWY 15)**



FT/METER CONVERSION
QNH

1480'	-	450m
4930'	-	1500m
10010'	-	3050m



These SIDs require a minimum climb gradient of 5% up to 4930'.

Gnd speed-KT	75	100	150	200	250	300
5.0% V/V (fpm)	380	506	760	1013	1266	1519

SID	ROUTING
BRP 2U	Climb on 148° track to 1480', turn RIGHT to LC Lctr, turn RIGHT, intercept BRP R-307 inbound to BRP VOR.
KAFEL 1U	Climb on 148° track to 1480', turn RIGHT, on 328° track, turn LEFT, intercept 258° bearing from LC Lctr to KAFEL.

UKKM/GML
ANTONOV-2 INTL

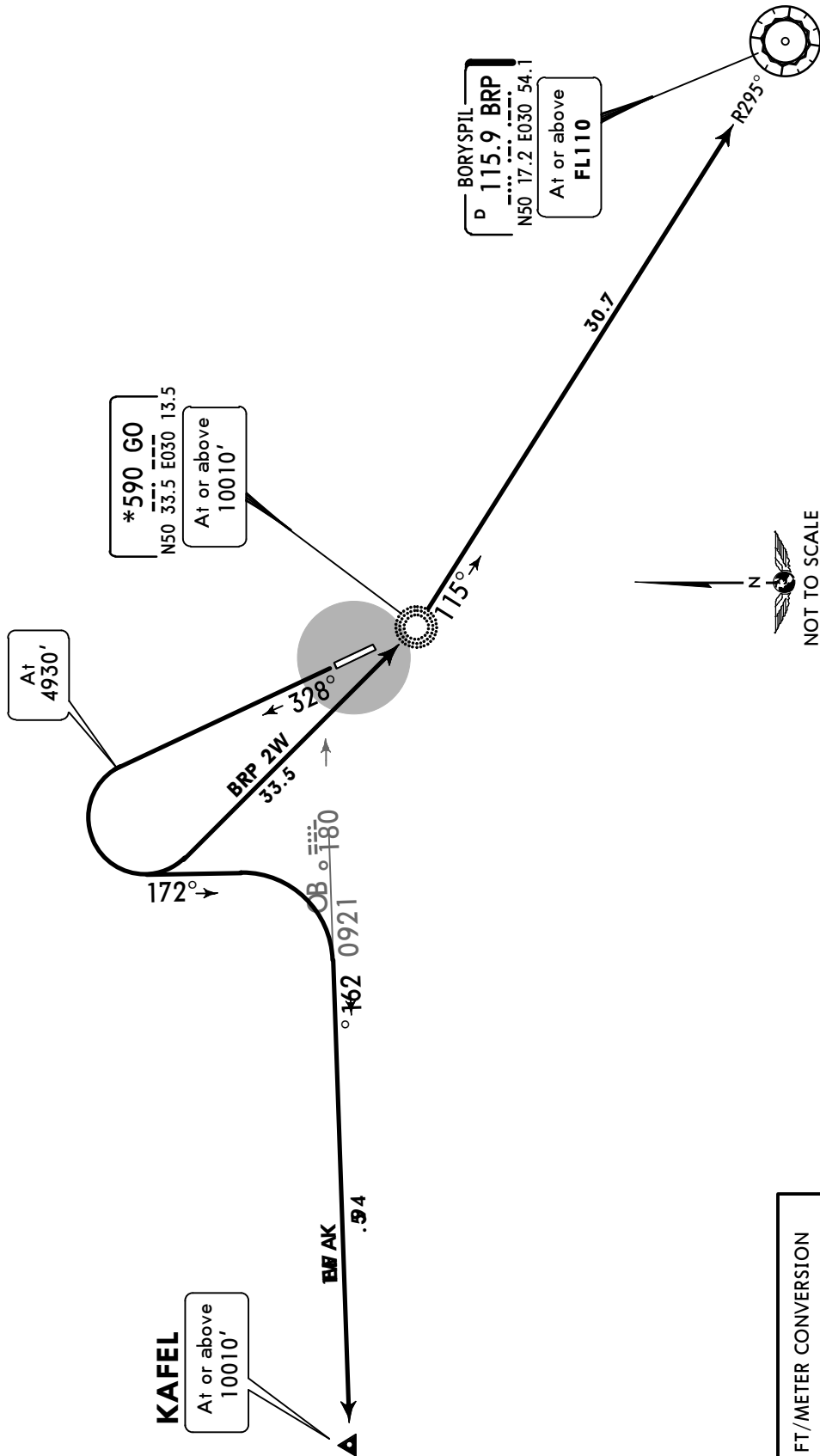
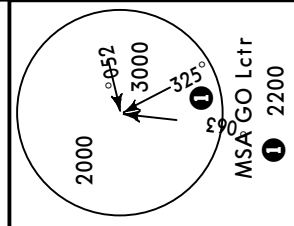
JEPPESEN
1 NOV 19 (30-3C) Eff 7 Nov

KYIV, UKRAINE
SID

Apt Elev
518'

Trans level: By ATC Trans alt: 10010'

**BORYSPIL 2W (BRP 2W) [BPR2W]
KAFEL 1W [KAFE1W]
DEPARTURES
(RWY 33)**



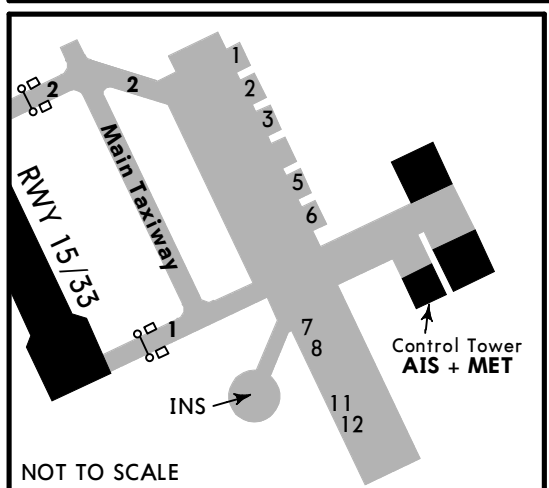
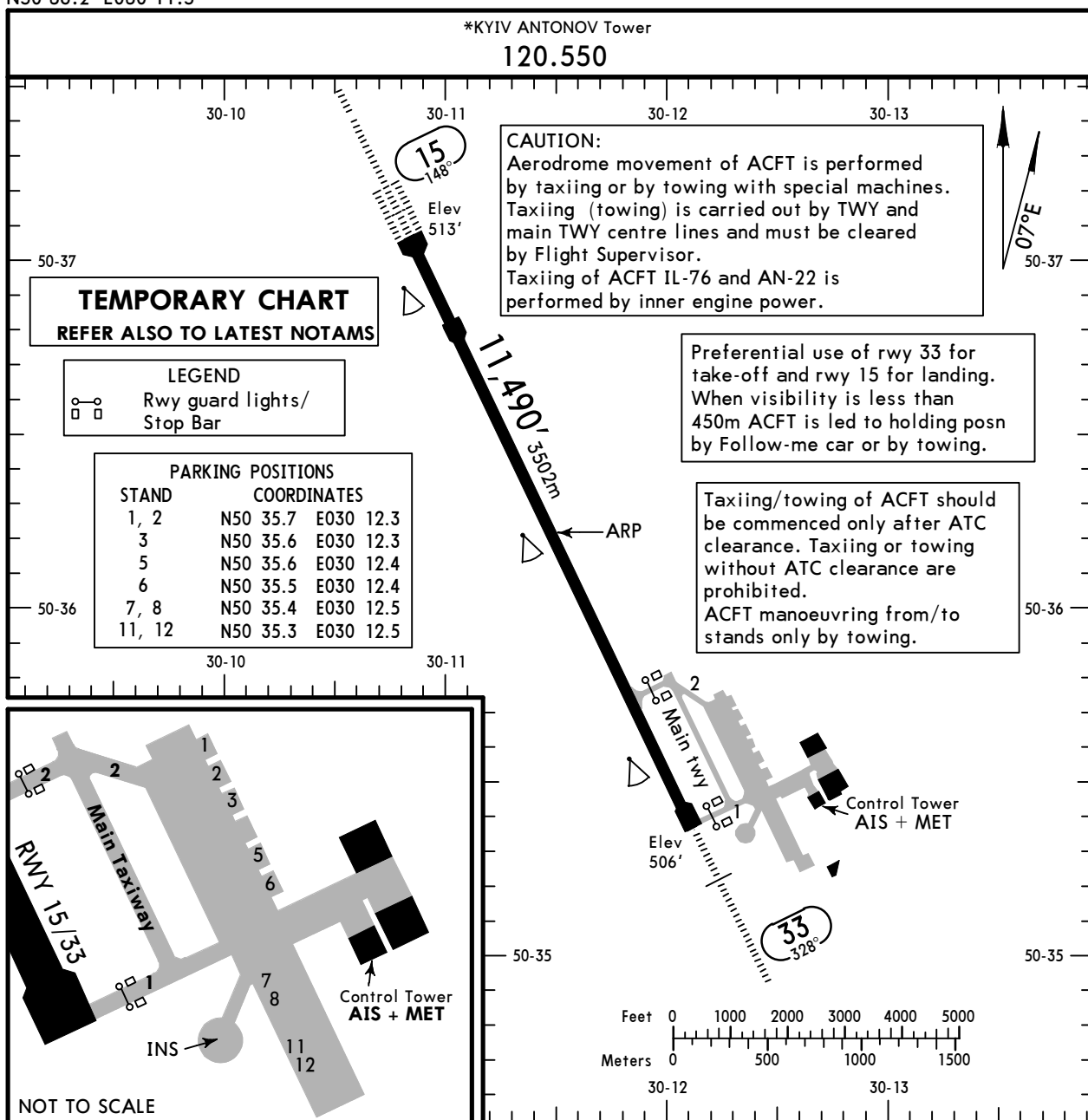
FT/METER CONVERSION
QNH
4930' - 1500m
10010' - 3050m

SID	ROUTING
BRP 2W	Climb on 328° track to 4930', turn LEFT to GO Lctr, turn LEFT, intercept BRP R-295 inbound to BRP VOR.
KAFEL 1W	Climb on 328° track to 4930', turn LEFT, on 172° track, turn RIGHT, intercept 261° bearing from BO NDB to KAFEL.

UKKM/GML
 Apt Elev **518'**
 N50 36.2 E030 11.5

JEPPesen
 24 DEC 21 **(30-8)** Eff 30 Dec

KYIV, UKRAINE
ANTONOV-2 INTL



ADDITIONAL RUNWAY INFORMATION

RWY	USABLE LENGTHS				WIDTH
	LANDING BEYOND		TAKE-OFF		
	Threshold	Glide Slope			
15	HIRL (60m) CL (30m) HIALS-II TDZ ①	RVR	10,457' 3187m		184'
33	HIRL (60m) CL (30m) HIALS ①	RVR	10,579' 3224m	②	56m

① PAPI-L (angle 3.0°)

② TAKE-OFF RUN AVAILABLE

RWY 33:

From rwy head 11,490' (3502m)
 twy 2 int 9521' (2902m)

JAR-OPS

TAKE-OFF ①

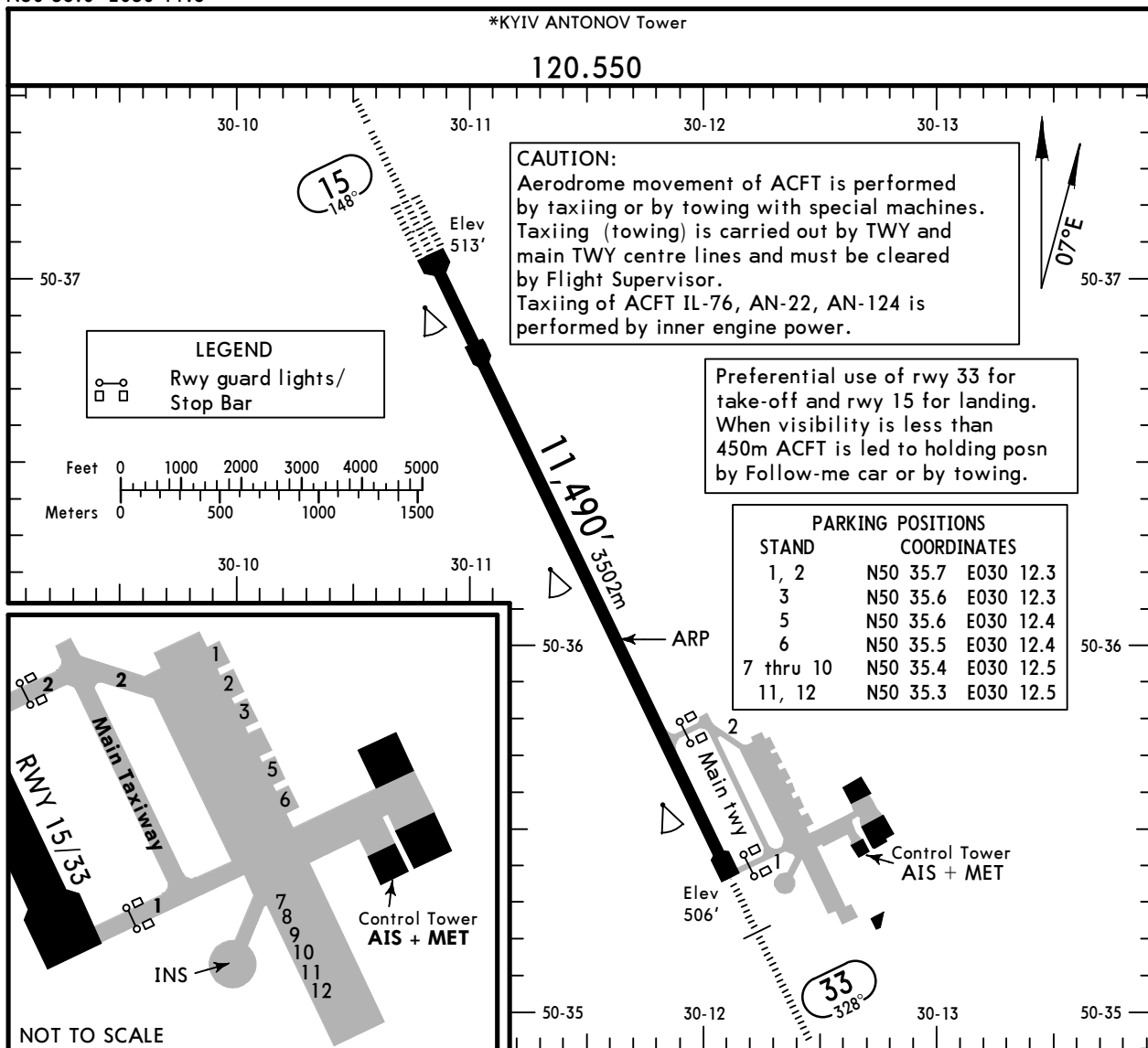
	All Rwys				
	LVP must be in force				
	RL, CL & mult. RVR req	RL & CL	RCLM (DAY only) or RL	RCLM (DAY only) or RL	NIL (DAY only)
A					
B	150m	200m	250m	400m	500m
C					
D	200m	250m	300m		

① Operators applying U.S. Ops Specs: CL required below 300m.

UKKM/GML
 Apt Elev **518'**
 N50 36.0 E030 11.6

JEPPESSEN
 10 APR 20 **(30-9)** Eff 23 Apr

KYIV, UKRAINE
ANTONOV-2 INTL



ADDITIONAL RUNWAY INFORMATION

RWY					USABLE LENGTHS		TAKE-OFF	WIDTH
	HIRL (60m)	CL (30m)	HIALS-II	PAPI-L (3.0°)	RVR	Threshold		
15	HIRL (60m)	CL (30m)	HIALS-II	PAPI-L (3.0°)	RVR		10,457' 3187m	184'
33	HIRL (60m)	CL (30m)	HIALS	PAPI-L (3.0°)	RVR		10,579' 3224m	56m

JAR-OPS

TAKE-OFF 1

All Rwys					
LVP must be in force					
	RL, CL & mult. RVR req	RL & CL	RCLM (DAY only) or RL	RCLM (DAY only) or RL	NIL (DAY only)
A					
B	150m	200m	250m	400m	500m
C					
D	200m	250m	300m		

1 Operators applying U.S. Ops Specs: CL required below 300m.

UKKM/GML



10 MAY 19

30-9S

Eff 23 May

Standard

KYIV, UKRAINE
ANTONOV-2 INTL

STRAIGHT-IN RWY		A	B	C	D
15	ILS FULL ALS out	713' (200') R550m ① R1200m	713' (200') R550m ① R1200m	713' (200') R550m ① R1200m	713' (200') R550m ① R1200m
	LOC	NOT AUTH	NOT AUTH	NOT AUTH	NOT AUTH
	NDB ②③	920' (407') R1200m R1500m	920' (407') R1200m R1500m	920' (407') R1200m R1900m	920' (407') R1200m R1900m
	NDB ②④	920' (407') R1200m R1900m	920' (407') R1200m R1900m	920' (407') R1200m R1900m	920' (407') R1200m R1900m
	NDB ④	920' (407') R1400m R2100m	920' (407') R1400m R2100m	920' (407') R1600m R2300m	920' (407') R1600m R2300m
	ALS out				
33	ILS FULL ALS out	706' (200') R550m ① R1200m	706' (200') R550m ① R1200m	706' (200') R550m ① R1200m	706' (200') R550m ① R1200m
	LOC	NOT AUTH	NOT AUTH	NOT AUTH	NOT AUTH
	NDB ②③ with SDF at GO NDB ALS out	940' (434') R1300m R1500m	940' (434') R1300m R1500m	940' (434') R1300m R2000m	940' (434') R1300m R2000m
	NDB ②⑥ with SDF at GO NDB ALS out	940' (434') R1300m R2000m	940' (434') R1300m R2000m	940' (434') R1300m R2000m	940' (434') R1300m R2000m
	NDB ⑥ with SDF at GO NDB ALS out	940' (434') R1500m R2200m	940' (434') R1500m R2200m	940' (434') R1700m R2400m	940' (434') R1700m R2400m
	NDB ②③ w/o SDF	1220' (714') R1500m	1220' (714') R1500m	1220' (714') R2400m	1220' (714') R2400m
	NDB ⑥ w/o SDF ALS out	1220' (714') R2800m R3500m	1220' (714') R2800m R3500m	1220' (714') R3000m R3700m	1220' (714') R3000m R3700m
	ALS out				

① W/o HUD/AP/FD: R750m

③ with FF15

⑤ with FF33

② Continuous Descent Final Approach

④ w/o FF15

⑥ w/o FF33

CIRCLE-TO-LAND	100 KT	135 KT	180 KT	205 KT
After apch to rwy 15	990' (472')	1050' (532')	1150' (632')	1220' (702')
After apch to rwy 33	990' (472') ⑦ V1500m ⑧	1050' (532') ⑦ V1600m ⑧	1150' (632') ⑦ V2400m ⑧	1220' (702') ⑦ V3600m ⑧

⑦ After NDB circling height based on rwy 33 thresh elev of 506': MDA(H) 1220' (714').

⑧ or higher minimums of preceding straight-in approach.

TAKE-OFF

Low Visibility Take-off					
A	RL, CL & relevant RVR	RL & CL	Day: RL & RCLM Night: RL or CL	Day: RL or RCLM Night: RL or CL	Adequate vis ref (Day only)
B	TDZ, MID, RO				
C	R150m	R200m	R300m	400m	500m
D					

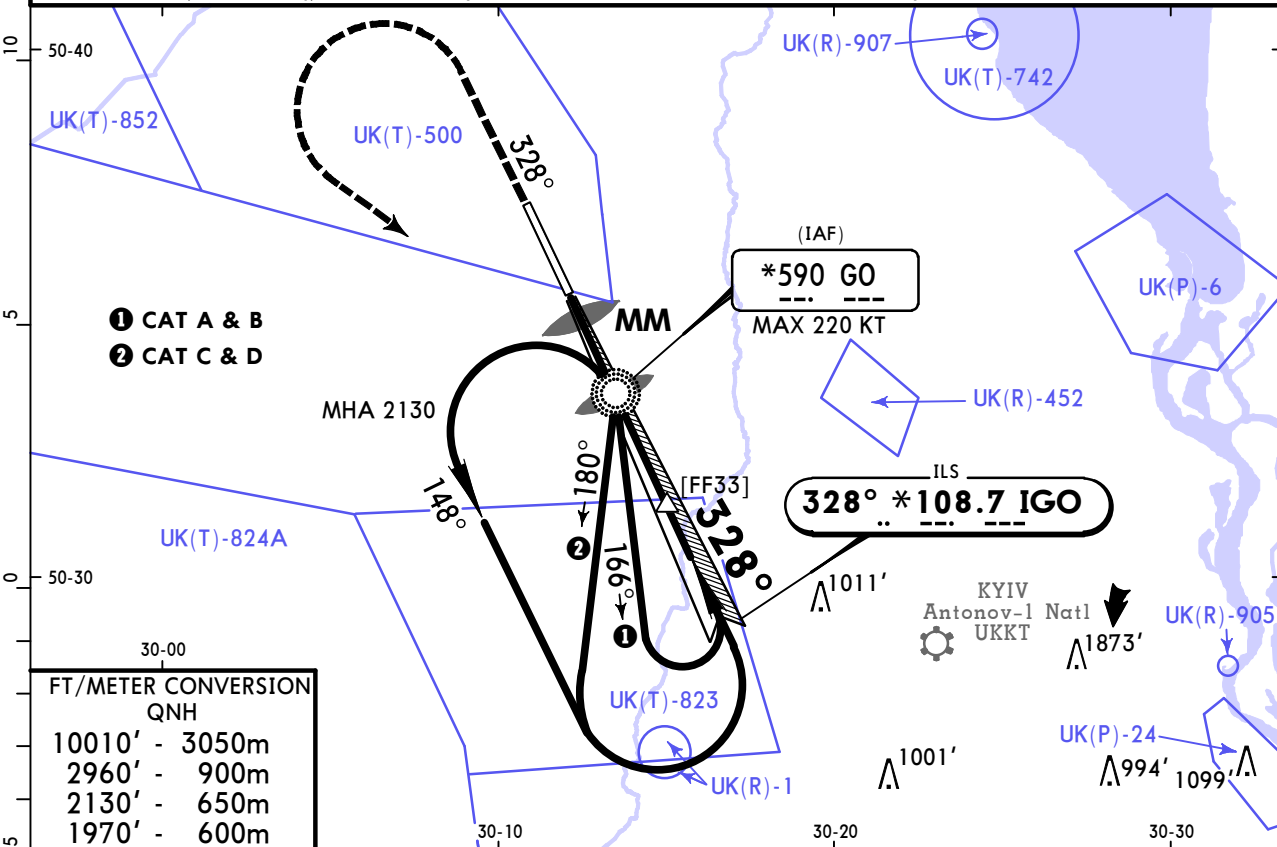
UKKM/GML
ANTONOV-2 INTL

JEPPESEN
25 DEC 20 **(31-2)** Eff 31 Dec

KYIV, UKRAINE
ILS Rwy 33

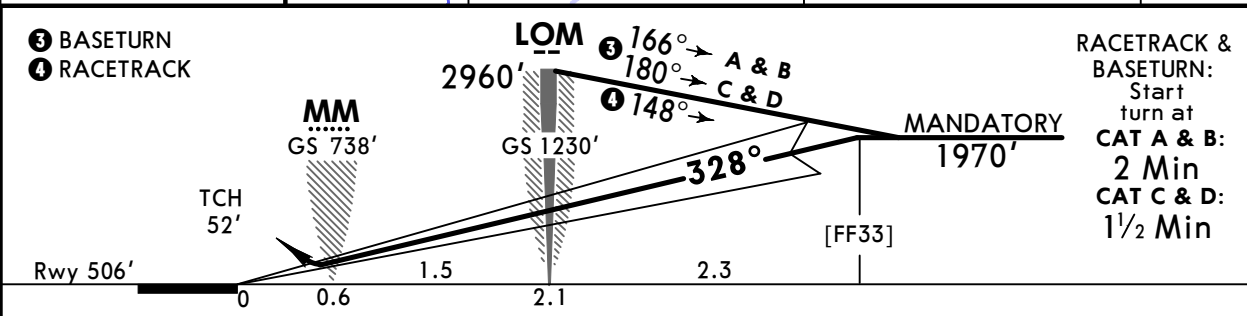
*KYIV Radar			*KYIV ANTONOV Tower		
125.3		127.725		120.550	
LOC IGO *108.7	Final Apch Crs 328°	No FAF	ILS DA(H) 706' (200')	Apt Elev 518' Rwy 506'	<p>MSA GO NDB</p>
<p>MISSED APCH: Climb on 328° to 1970', then turn LEFT climbing to 2960' to GO NDB, then according to chart.</p>					

Alt Set: hPa (MM on req) Rwy Elev: 18 hPa Trans level: By ATC Trans alt: 10010'



FT/METER CONVERSION
QNH

10010'	-	3050m
2960'	-	900m
2130'	-	650m
1970'	-	600m



Gnd speed-Kts	70	90	100	120	140	160	
GS	3.00°	372	478	531	637	743	

JAR-OPS		STRAIGHT-IN LANDING RWY 33		CIRCLE-TO-LAND	
ILS		LOC (GS out)			
DA(H) 706' (200')					
FULL		ALS out			
A				Max Kts	MDA(H) VIS
B				100	990' (472') 1500m
C	RVR 550m	RVR 1000m	NOT AUTHORIZED	135	1050' (532') 1600m
D				180	1150' (632') 2400m
				205	1220' (702') 3600m

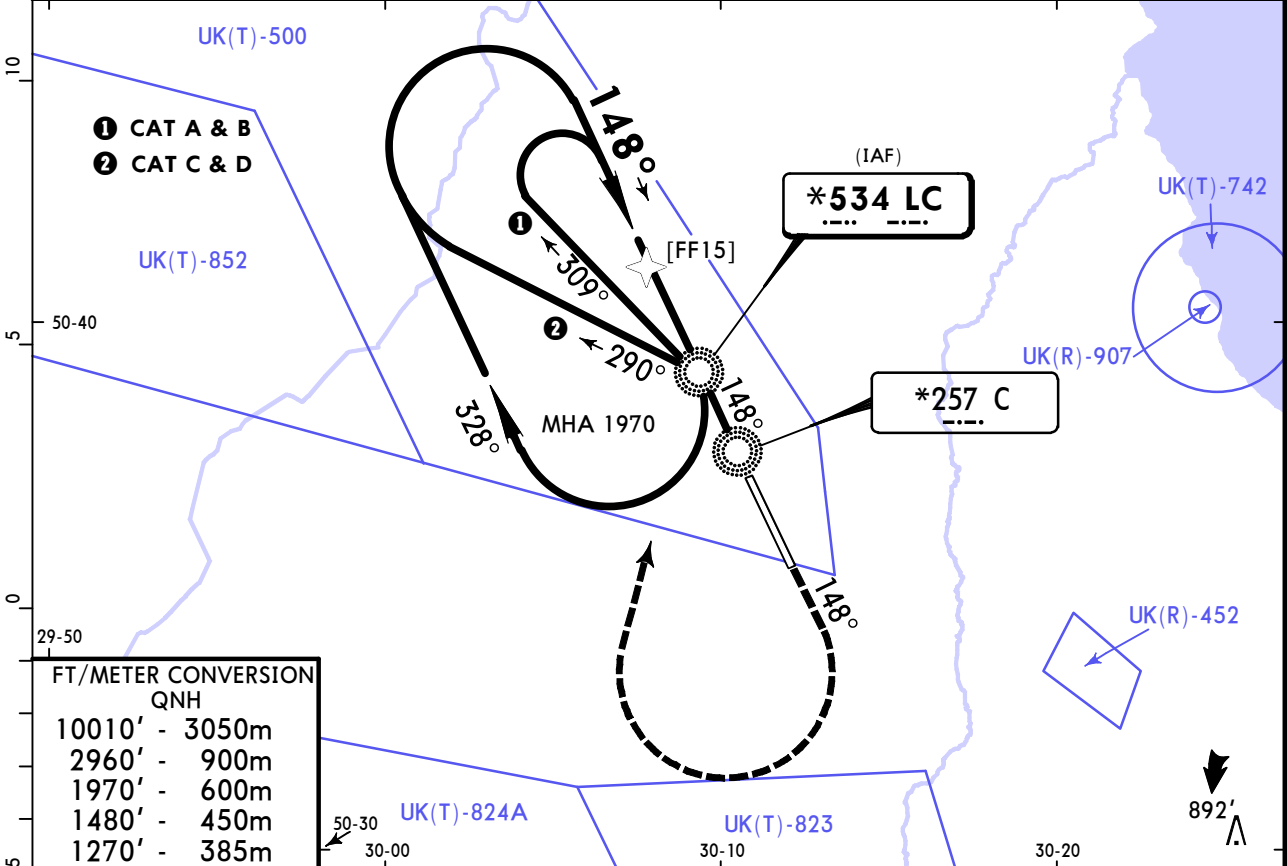
UKKM/GML
ANTONOV-2 INTL

JEPPESSEN
25 DEC 20 **(36-1)** Eff 31 Dec

KYIV, UKRAINE
NDB Rwy 15

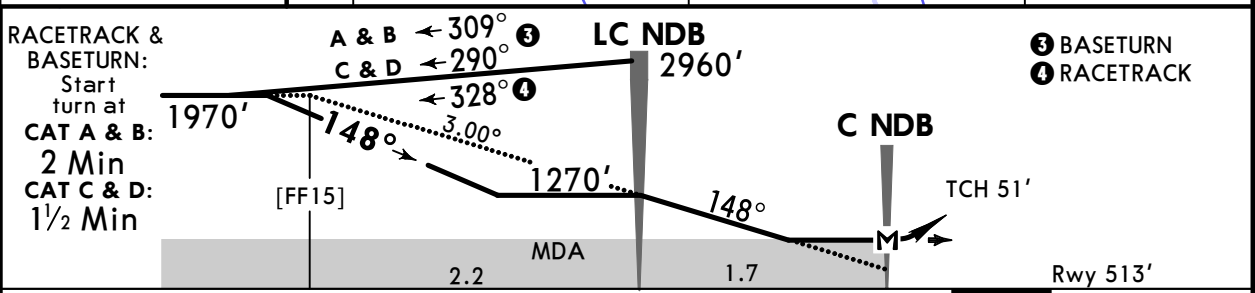
*KYIV Radar	*KYIV ANTONOV Tower				
125.3	127.725				
120.550					
NDB LC *534	Final Apch Crs 148°	No FAF	MDA(H) 920' (407')	Apt Elev 518' Rwy 513'	<p>MSA LC NDB</p>
<p>MISSED APCH: Climb on 148° to 1480', then turn RIGHT climbing to 2960' to LC NDB, then as directed.</p>					

Alt Set: hPa (MM on req) Rwy Elev: 19 hPa Trans level: By ATC Trans alt: 10010'



FT/METER CONVERSION

QNH	
10010'	3050m
2960'	900m
1970'	600m
1480'	450m
1270'	385m



Gnd speed-Kts	70	90	100	120	140	160	HIALS-II PAPI
Descent Angle	3.00°	372	478	531	637	743	

JAR-OPS				STRAIGHT-IN LANDING RWY 15				CIRCLE-TO-LAND			
MDA(H) 920' (407')											
				ALS out				Max Kts			
A	RVR 900m			RVR 1500m			100	MDA(H) 990' (472')	VIS 1500m		
B			RVR 1000m			RVR 1800m	135	1050' (532')	1600m		
C			RVR 1400m			RVR 2000m	180	1150' (632')	2400m		
D							205	1220' (702')	3600m		

PANS OPS

Chart changes since cycle 04-2025

ADD = added chart, REV = revised chart, DEL = deleted chart.

ACT	PROCEDURE IDENT	INDEX	REV DATE	EFF DATE
	KYIV, (ANTONOV-2 INTL - UKKM)			

TERMINAL CHART CHANGE NOTICES

Chart Change Notices for Airport UKKM

Type: Terminal

Effectivity: Temporary

Begin Date: 20211230

End Date: Until Further Notice

Based on AIRAC SUP 014/21 chart 30-9 suspended. Refer to temp chart 30-8 and latest NOTAMs.